



**COMPLETION
& PRODUCTION
SERVICES CO.**

**MICRO
LOG**

Company LOTUS OPERATING COMPANY, LLC.
Well #1 ACHENBACH "B"
Field STRANATHAN / HARDTNER
County BARBER
State KANSAS

Company LOTUS OPERATING COMPANY, LLC.
Well #1 ACHENBACH "B"
Field STRANATHAN / HARDTNER
County BARBER State KANSAS

Location: API # : 15-007-24230-0000
NE - NE - NW
Permanent Datum GROUND LEVEL Elevation 1477
Log Measured From KELLY BUSHING 13' A.G.L.
Drilling Measured From KELLY BUSHING
Other Services
CDL/CNL/PE
DIL/SON/FF
Elevation
K.B. 1490
D.F. 1488
G.L. 1477

Date	9/30/14
Run Number	TWO
Depth Driller	5547
Depth Logger	5547
Bottom Logged Interval	5531
Top Log Interval	3800
Casing Driller	10 3/4" @ 300'
Casing Logger	300
Bit Size	7 7/8"
Type Fluid in Hole	CHEMICAL MUD
Density / Viscosity	9.4/42
pH / Fluid Loss	11.0/9.0
Source of Sample	FLOWLINE
Rim @ Meas. Temp	.650 @ 80F
Rmf @ Meas. Temp	.488 @ 80F
Rmc @ Meas. Temp	.780 @ 80F
Source of Rmf / Rmc	MEASUREMENT
Rim @ BHT	.400 @ 130F
Time Circulation Stopped	8.5 HOURS
Time Logger on Bottom	11:00 P.M.
Maximum Recorded Temperature	130F
Equipment Number	4854
Location	HAYS, KANSAS
Recorded By	JEFF LUEBBERS
Witnessed By	TIM HELLMAN

<<< Fold Here >>>

All interpretations are opinions based on inferences from electrical or other measurements and we cannot and do not guarantee the accuracy or correctness of any interpretation, and we shall not, except in the case of gross or willful negligence on our part, be liable or responsible for any loss, costs, damages, or expenses incurred or sustained by anyone resulting from any interpretation made by any of our officers, agents or employees. These interpretations are also subject to our general terms and conditions set out in our current Price Schedule.

Comments

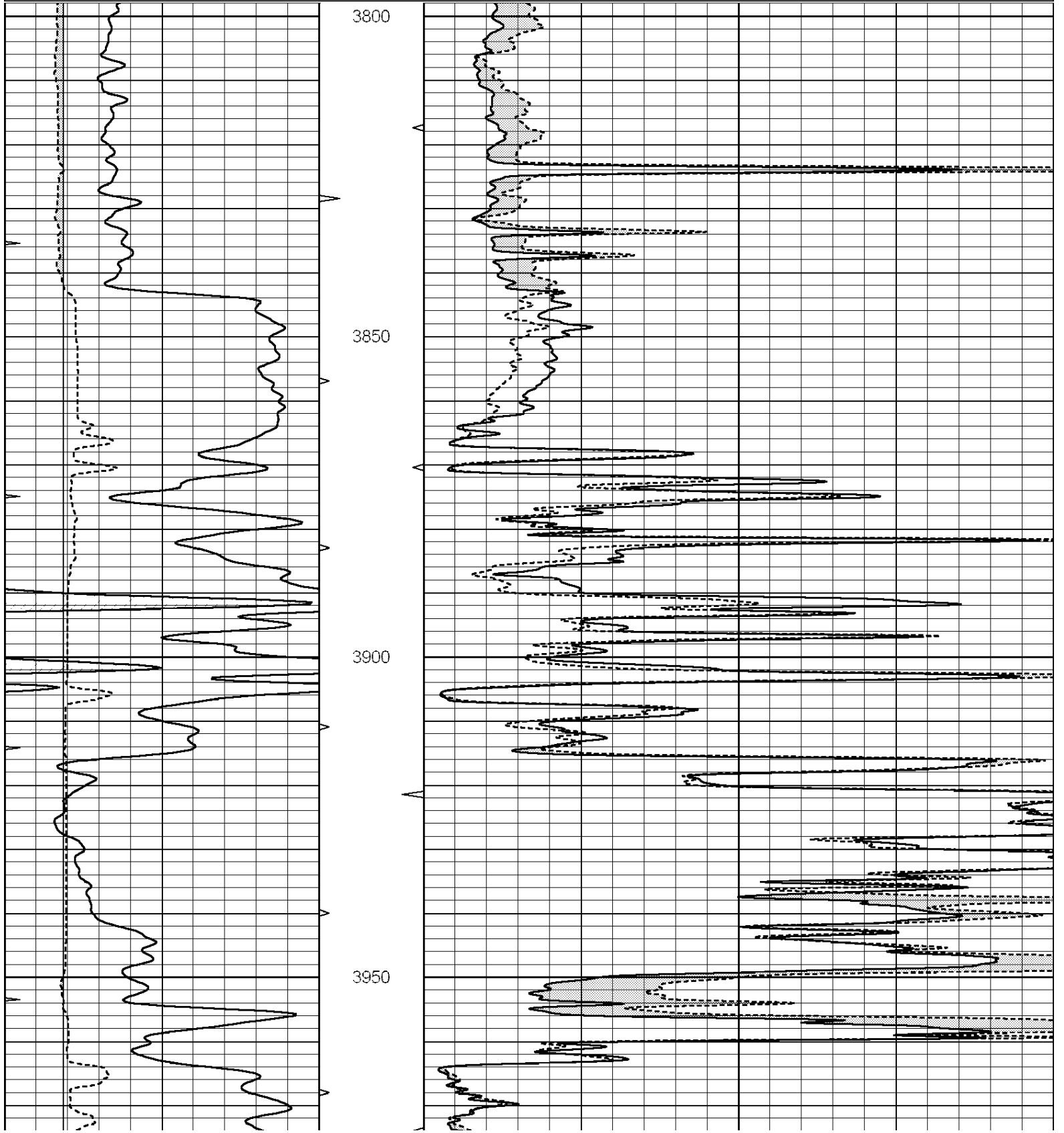
THANK YOU FOR USING "NABORS" HAYS, KANSAS (785) 628-6395
DIRECTIONS
HARDTNER, KS., 3W. ON BLKTOP JUST PAST "GYP HILL RD.", N. INTO PAST FARM HOUSE, FOLLOW
TRAIL 1/2 MILE, W. & N.

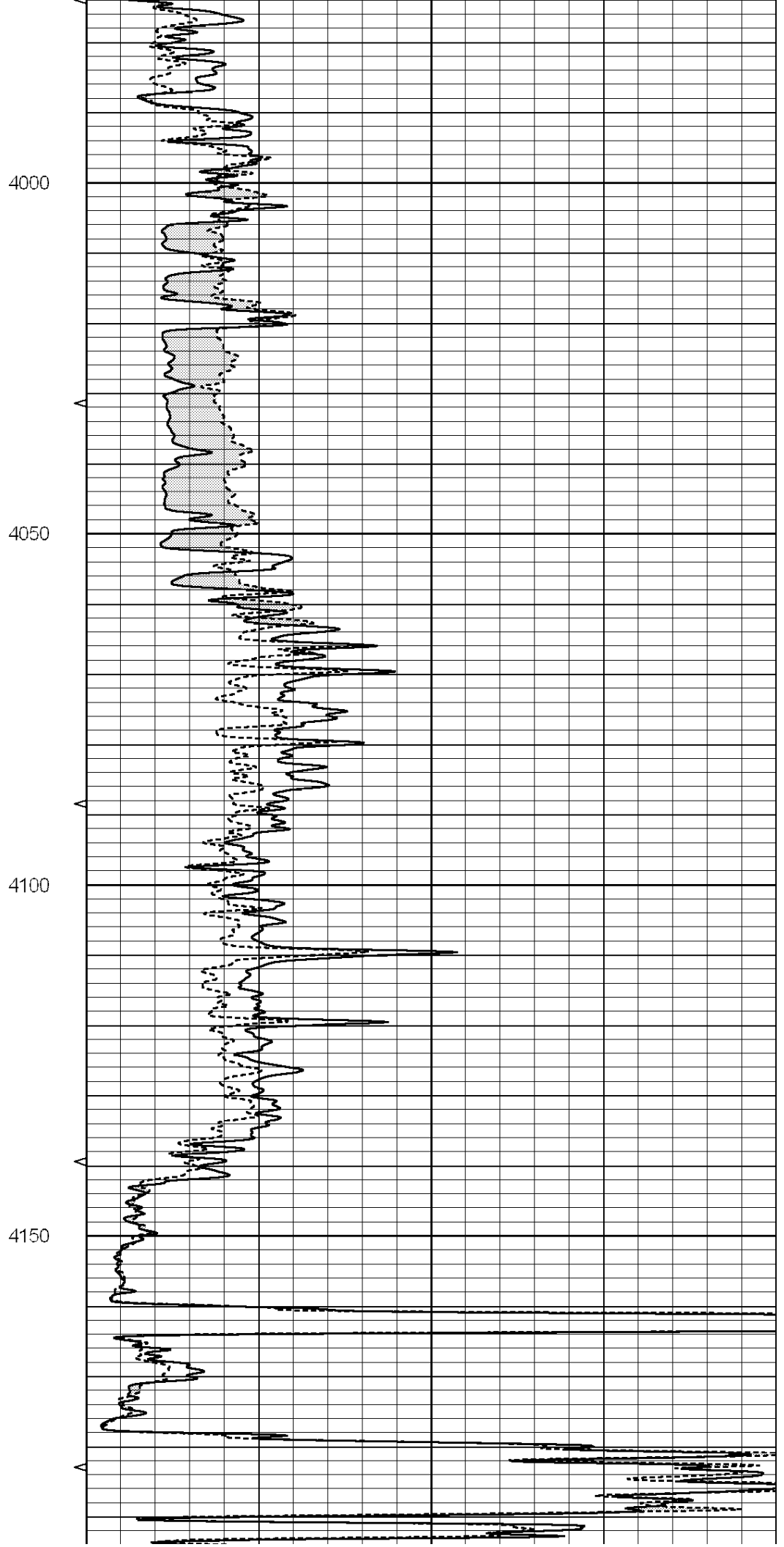
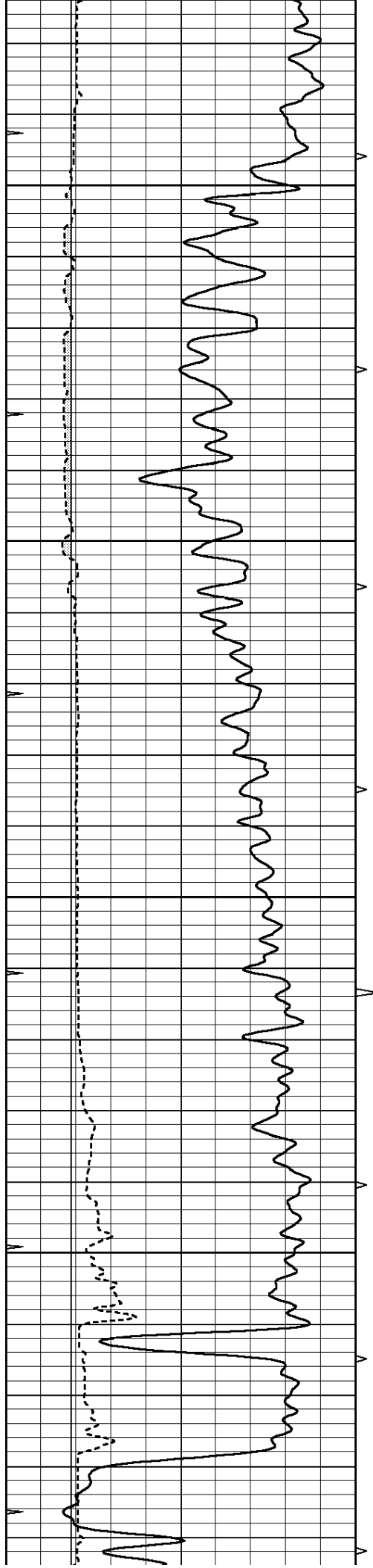


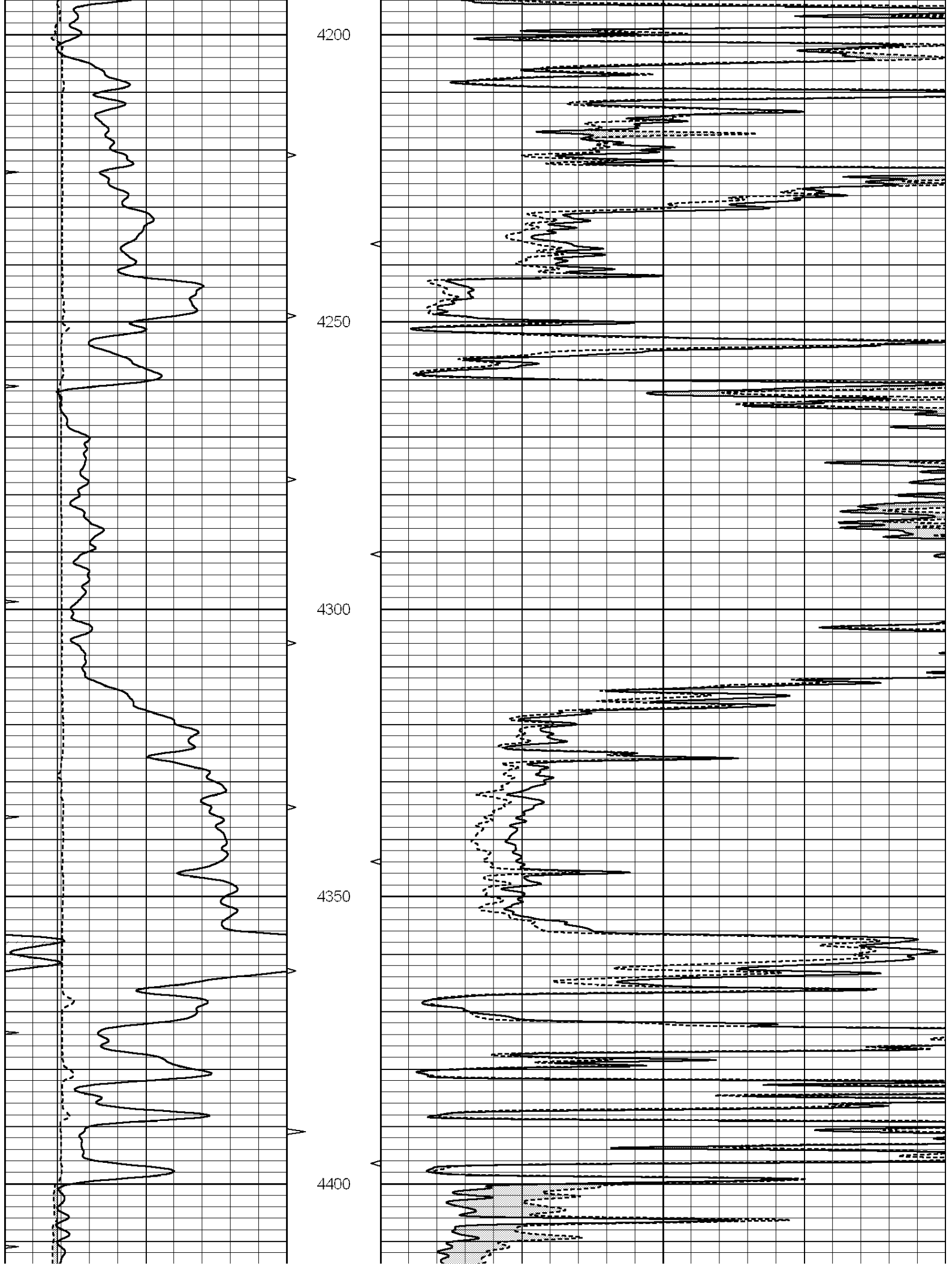
MAIN SECTION

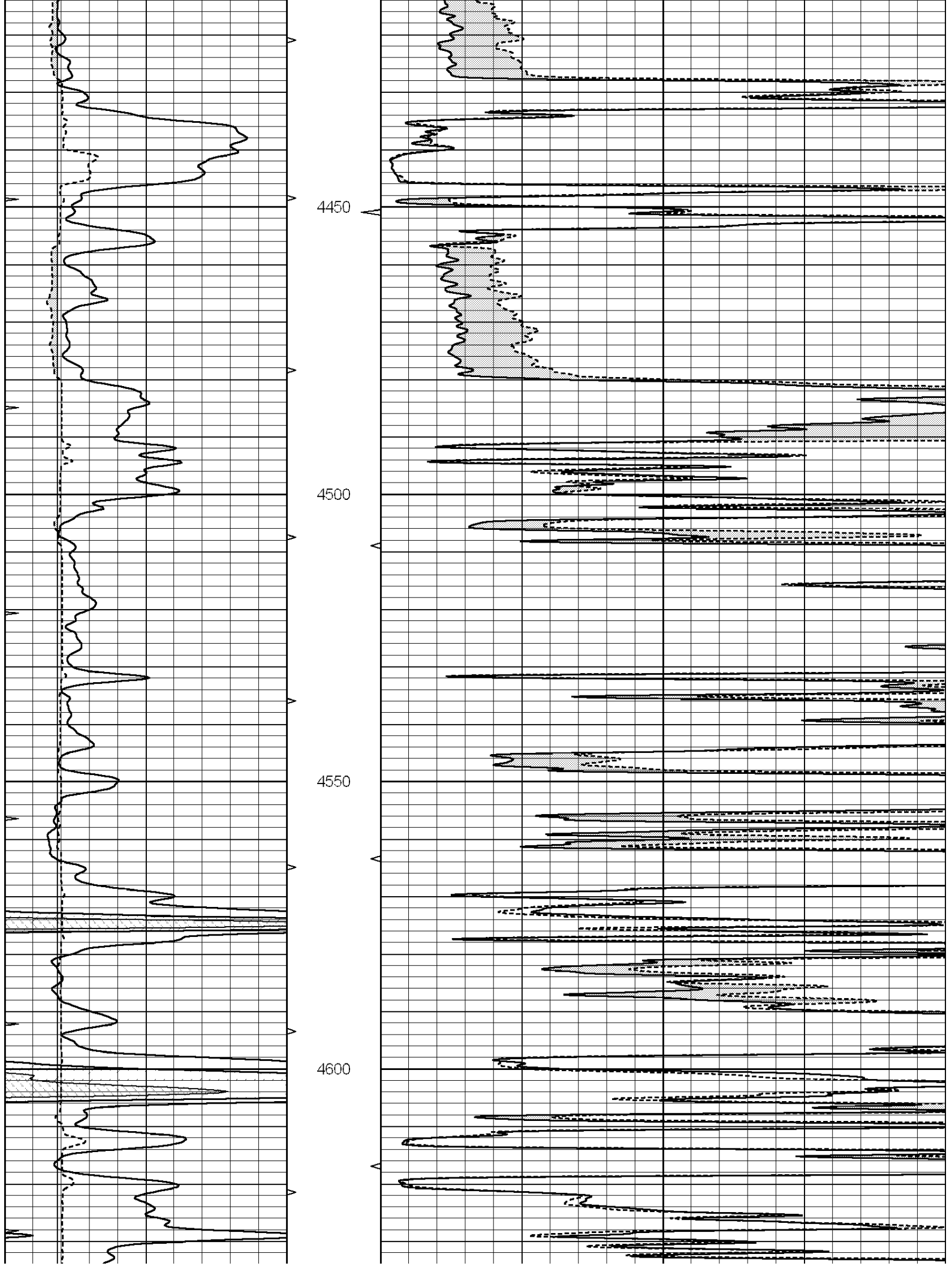
Database File: 25888pe.db
 Dataset Pathname: pass7.3
 Presentation Format: micro
 Dataset Creation: Wed Oct 01 03:26:04 2014 by Calc SOC 120430
 Charted by: Depth in Feet scaled 1:240

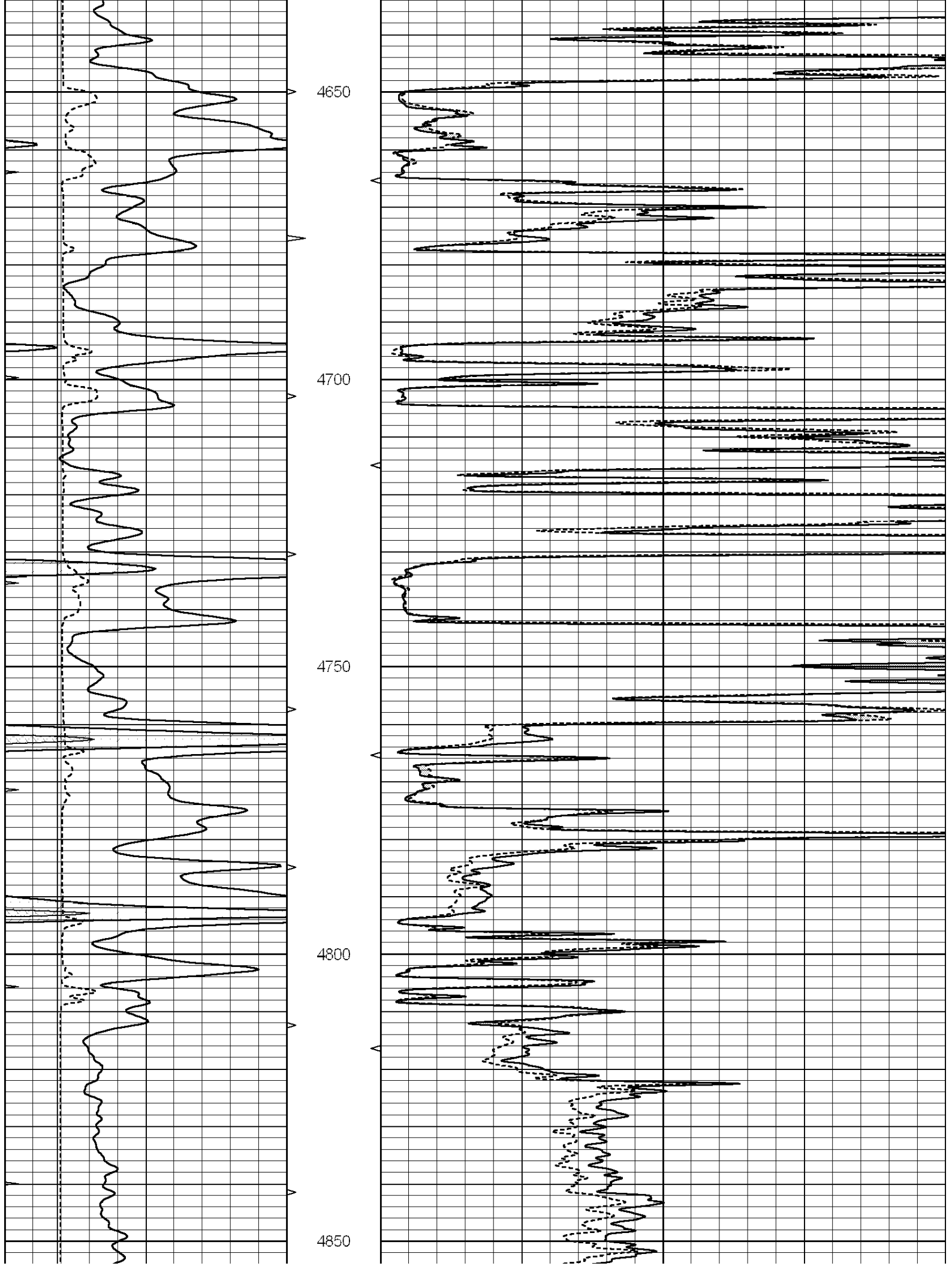
0	GAMMA RAY (GAPI)	150	ABHV	0	MEL1.5 (Ohm-m)	40
6	CALIPER (in)	16	10 (ft3)	0	MEL 20 (Ohm-m)	40
0	MINMK	20	TBHV			
			0 (ft3)	10		

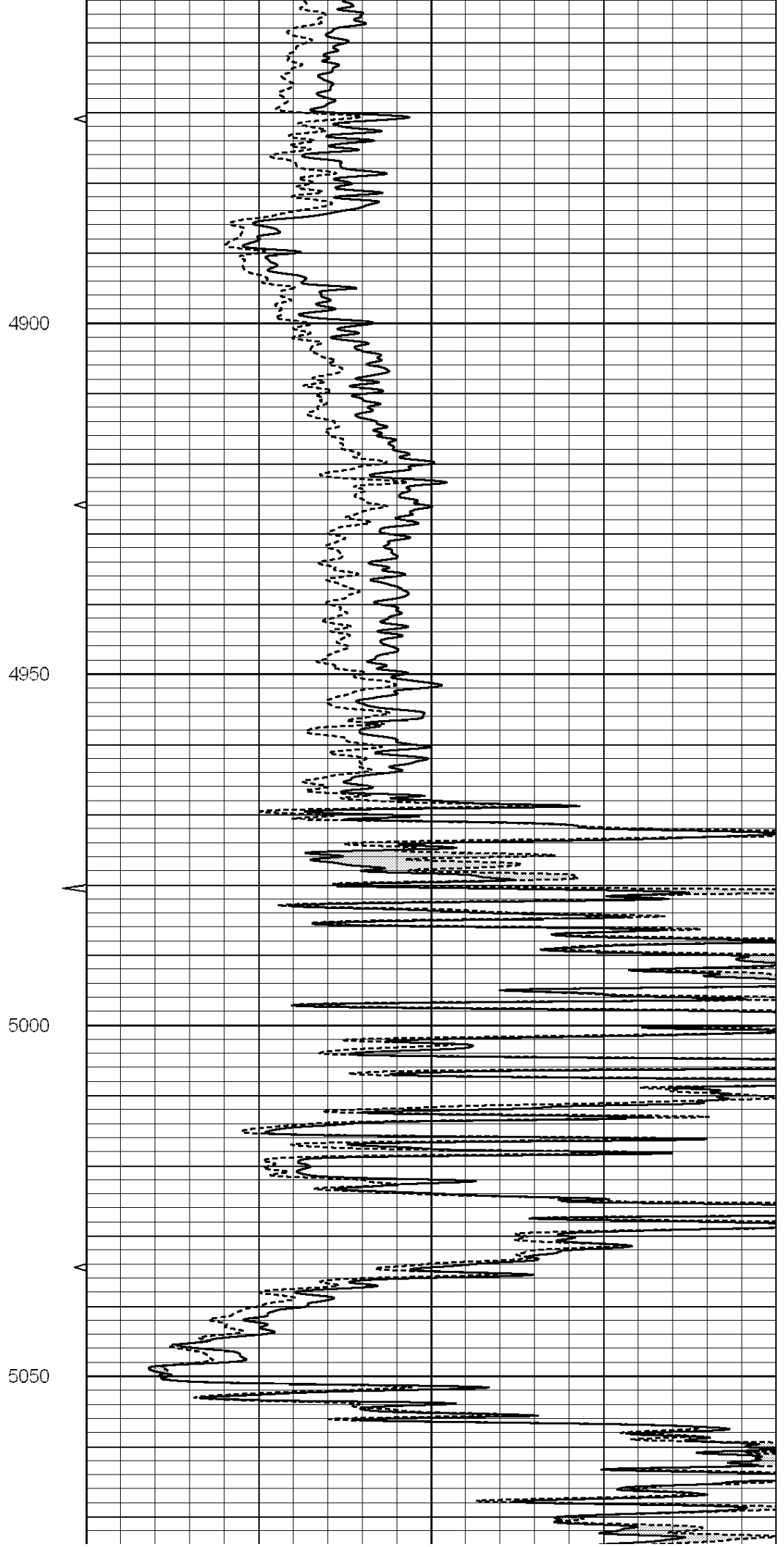
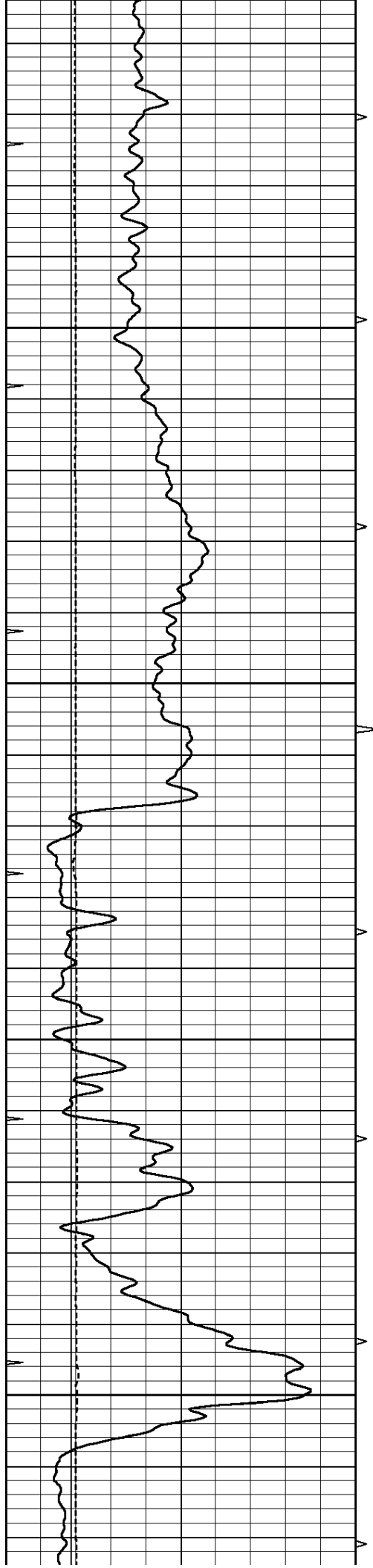


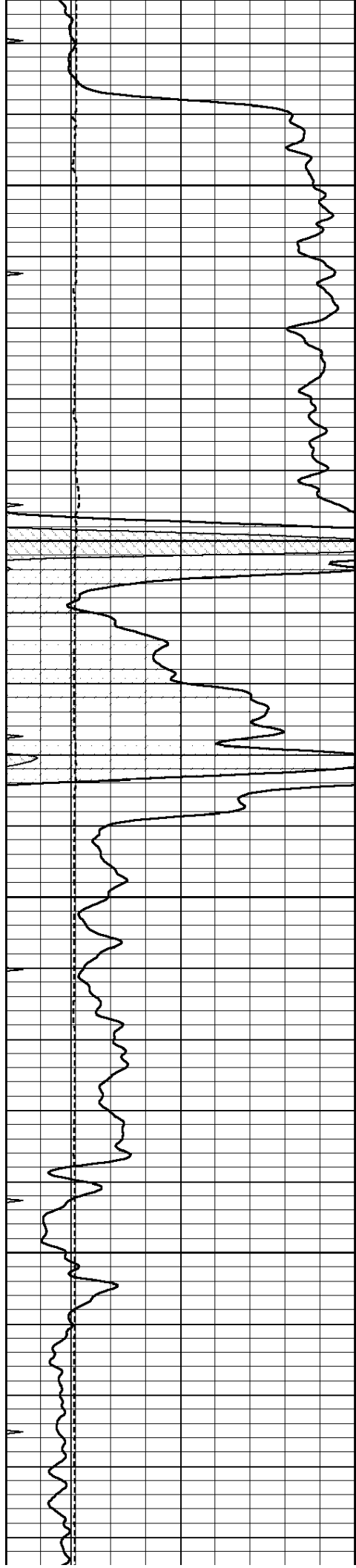










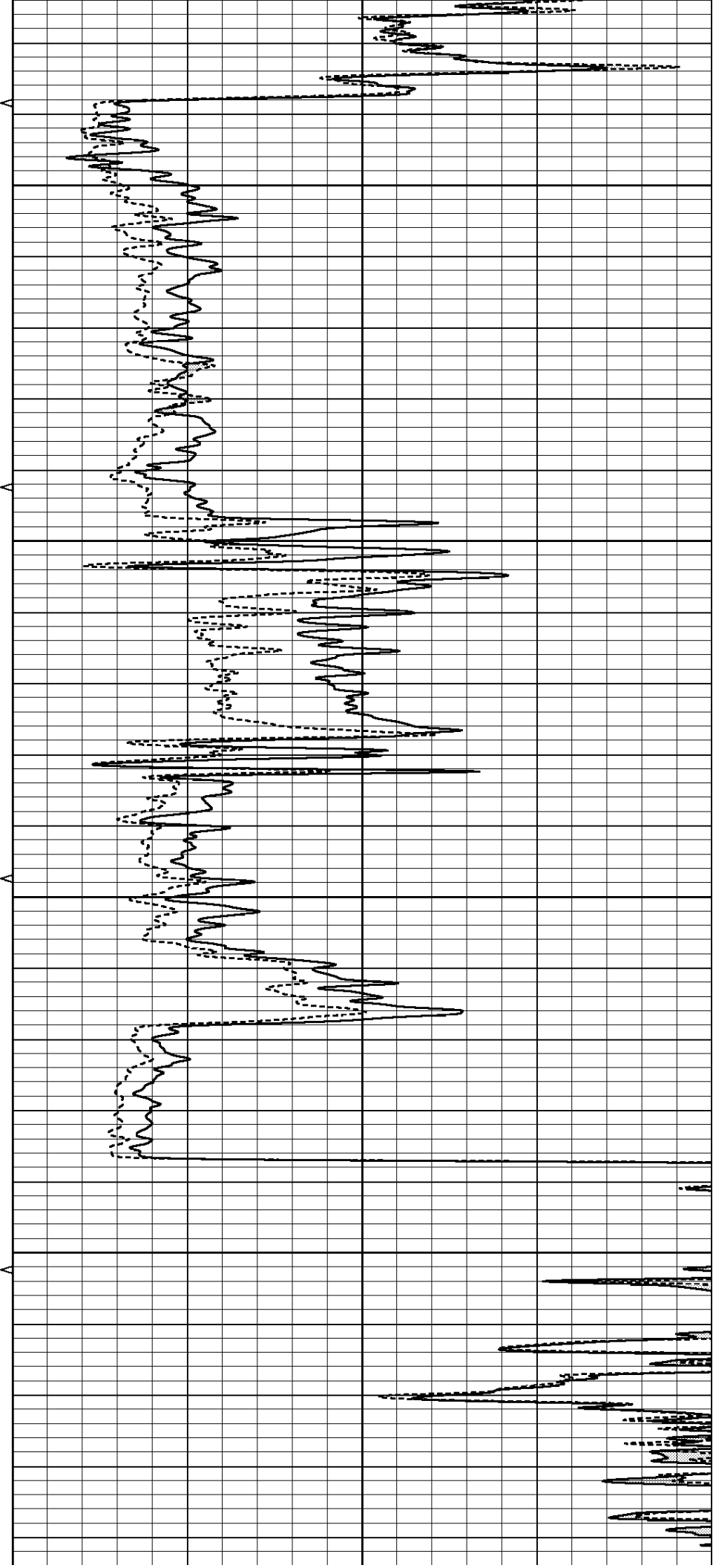


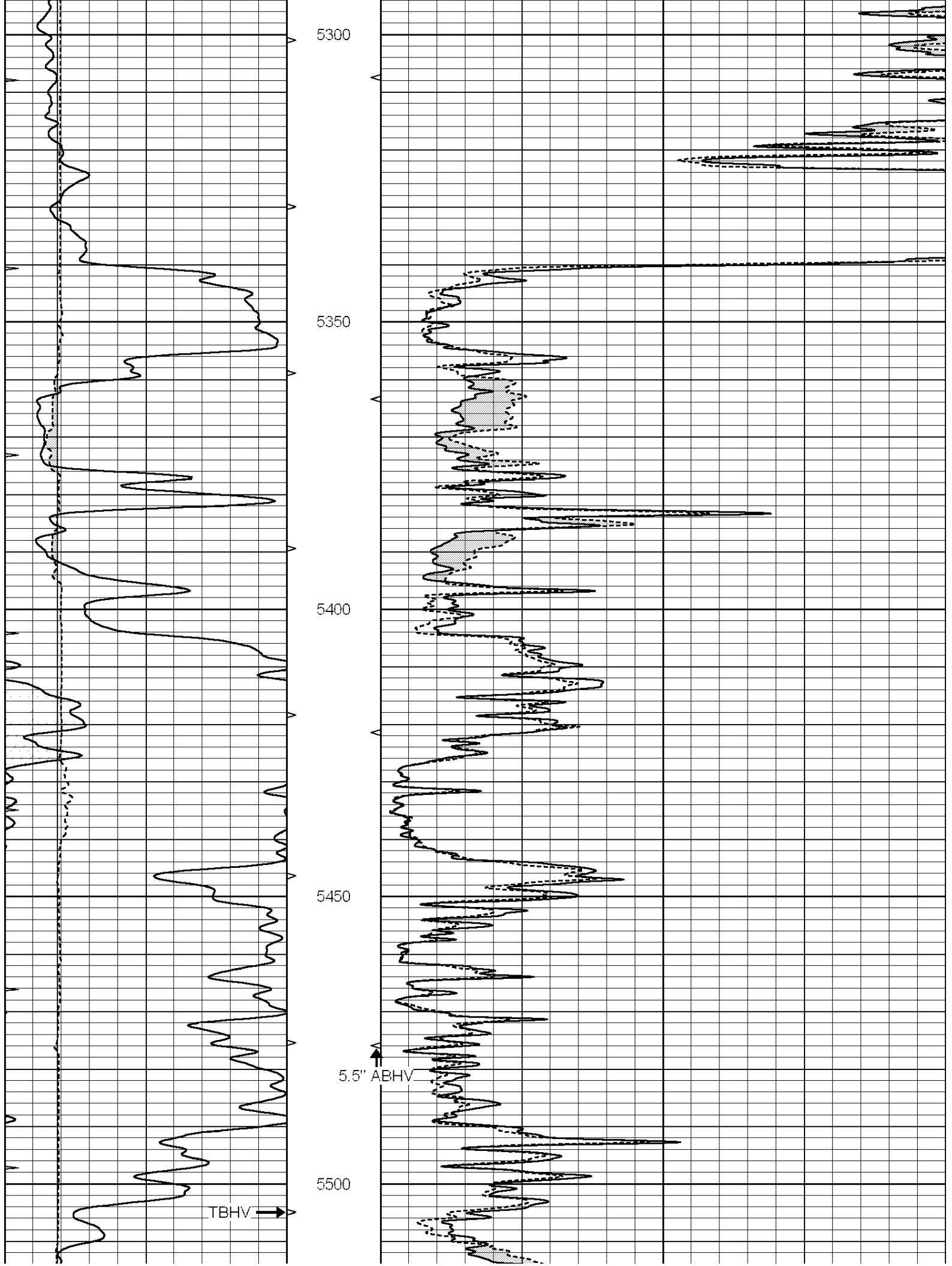
5100

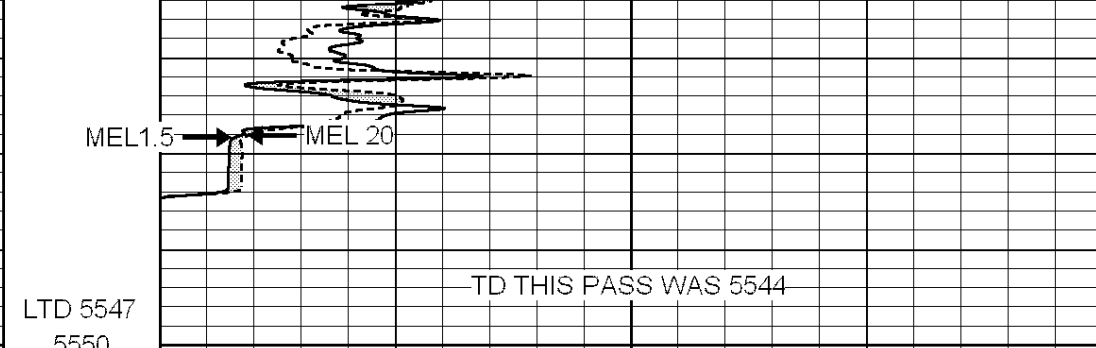
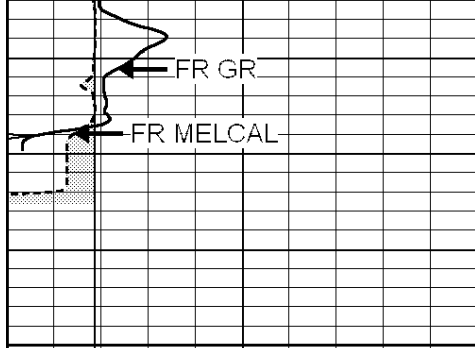
5150

5200

5250







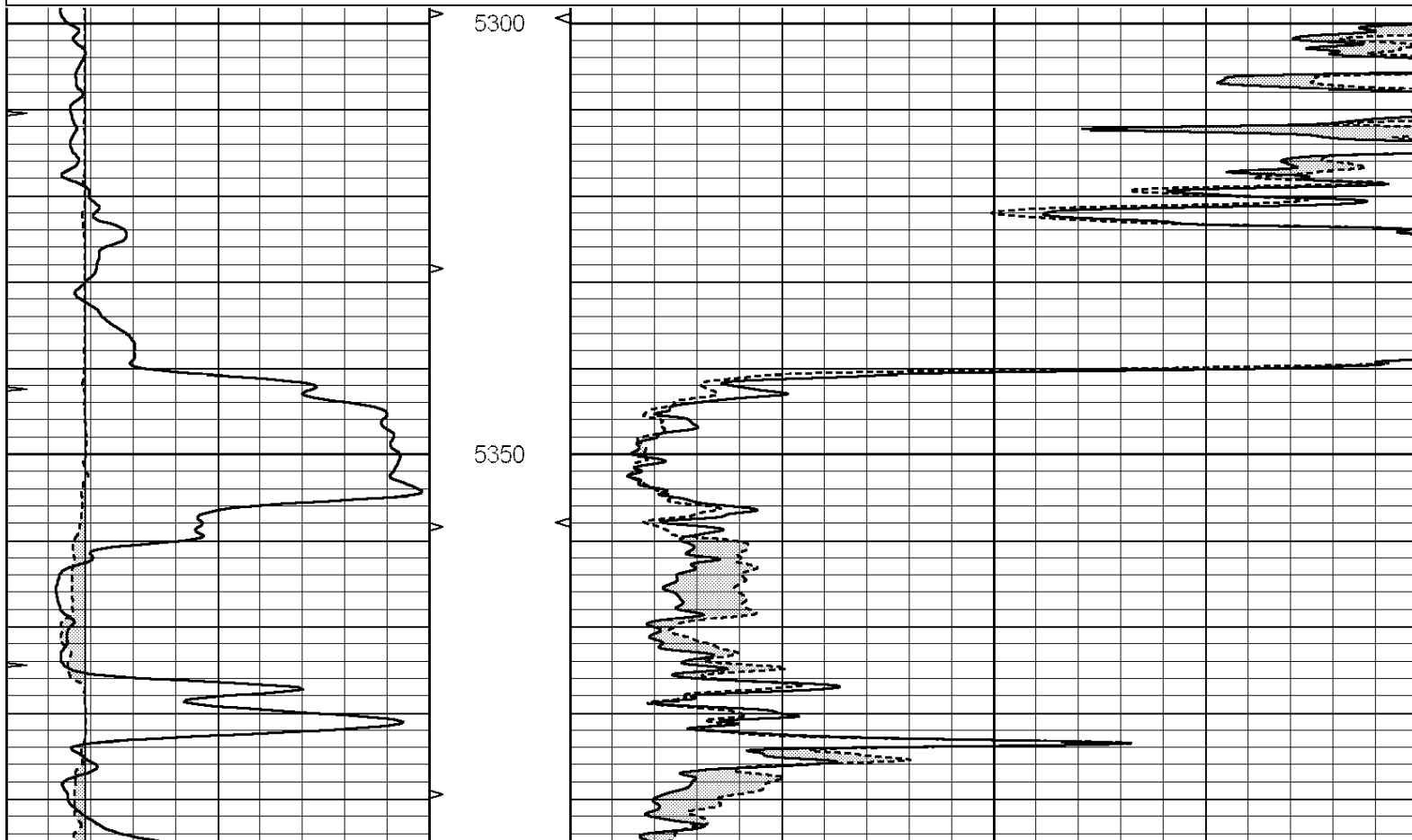
		LTD 5547				
		5550				
0	GAMMA RAY (GAPI)	150	ABHV	0	MEL1.5 (Ohm-m)	40
6	CALIPER (in)	16	10 (ft3)	0 0	MEL 20 (Ohm-m)	40
0	MINMK	20	TBHV			
			0 (ft3)	10		

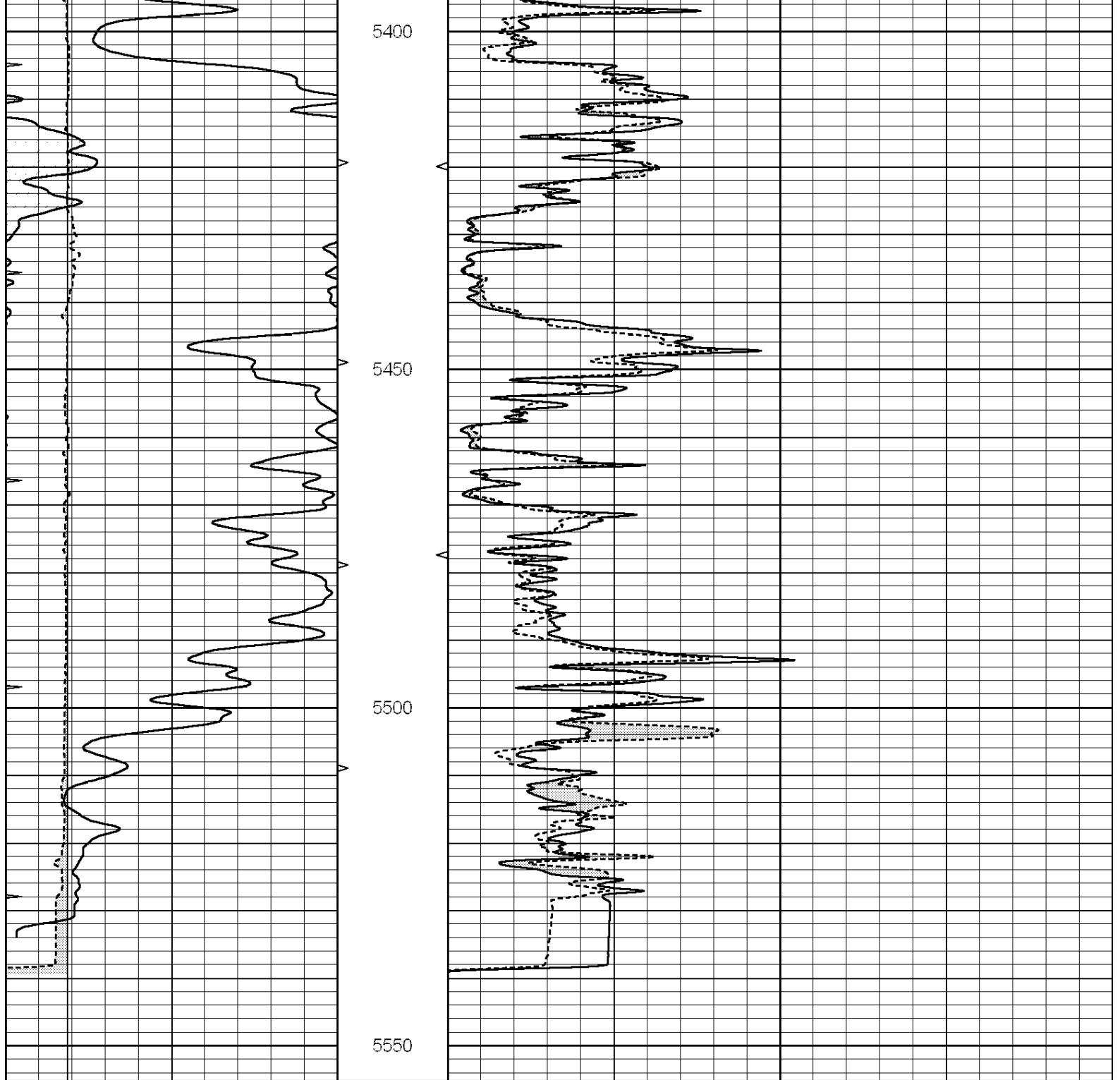


REPEAT SECTION

Database File: 25888pe.db
 Dataset Pathname: pass6.1
 Presentation Format: micro
 Dataset Creation: Wed Oct 01 02:27:09 2014 by Calc SOC 120430
 Charted by: Depth in Feet scaled 1:240

0	GAMMA RAY (GAPI)	150	ABHV	0	MEL1.5 (Ohm-m)	40
6	CALIPER (in)	16	10 (ft3)	0 0	MEL 20 (Ohm-m)	40
0	MINMK	20	TBHV			
			0 (ft3)	10		





0	GAMMA RAY (GAPI)	150	ABHV	0	MEL1.5 (Ohm-m)	40
6	CALIPER (in)	16	10 (ft3)	0	MEL 20 (Ohm-m)	40
0	MINMK	20	TBHV			
			0 (ft3)	10		

Calibration Report

Database File: 25888pe.db
 Dataset Pathname: pass7.3
 Dataset Creation: Wed Oct 01 03:26:04 2014 by Calc SOC 120430

MICRO Calibration Report

Serial Number: 070911
 Tool Model: ProbeN
 Performed: Wed Sep 03 16:51:01 2014

Caliper Calibration:	Gain=3.517	Offset=3.213
References	Low Cal 8.000	High Cal 15.000
Readings	1.361	3.352
1.5" Calibration:	Gain=30.000	Offset=-0.500
References	Low Cal 0.000	High Cal 20.000
Readings	0.001	1.269
2" Calibration:	Gain=58.000	Offset=-1.300
References	Low Cal 0.000	High Cal 20.000
Readings	0.002	1.101
Gamma Ray Calibration Report		
Serial Number:	070559	
Tool Model:	OPEN_GR	
Performed:	Tue Sep 16 23:07:37 2014	
Calibrator Value:	1.0	GAPI
Background Reading:	0.0	cps
Calibrator Reading:	1.0	cps
Sensitivity:	0.2000	GAPI/cps