



**GAMMA RAY NEUTRON
CEMENT BOND LOG**

Company SM OIL & GAS INC.
Well FULSOM B 14-2
Field LENITON
County CHAUTAUQUA
State KANSAS

Company SM OIL & GAS INC.
Well FULSOM B 14-2
Field LENITON
County CHAUTAUQUA State KANSAS

Location: API #: NE/4
SEC 17 TWP 33S RGE 19E
Permanent Datum G.L. Elevation ----
Log Measured From G.L.
Drilling Measured From G.L.

Other Services
PERF

Date	11/21/2016						
Run Number	ONE						
Depth Driller	----						
Depth Logger	1576'						
Bottom Logged Interval	1574'						
Top Log Interval	0'						
Open Hole Size	----						
Type Fluid	WATER						
Density / Viscosity	----						
Max. Recorded Temp.	----						
Estimated Cement Top	200'						
Time Well Ready	----						
Time Logger on Bottom	----						
Equipment Number	112						
Location	SKIATOOK						
Recorded By	E. PURYEAR						
Witnessed By	MR. J POTTS						
Borehole Record		Tubing Record					
Run Number	Bit	From	To	Size	Weight	From	To
Casing Record	Surface String	Size	Wgt/Ft	Top	Bottom		
Prot. String	Production String	4.5"		SURFACE	T.D.		
Liner							

<<< Fold Here >>>

All interpretations are opinions based on inferences from electrical or other measurements and we cannot and do not guarantee the accuracy or correctness of any interpretation, and we shall not, except in the case of gross or willful negligence on our part, be liable or responsible for any loss, costs, damages, or expenses incurred or sustained by anyone resulting from any interpretation made by any of our officers, agents or employees. These interpretations are also subject to our general terms and conditions set out in our current Price Schedule.

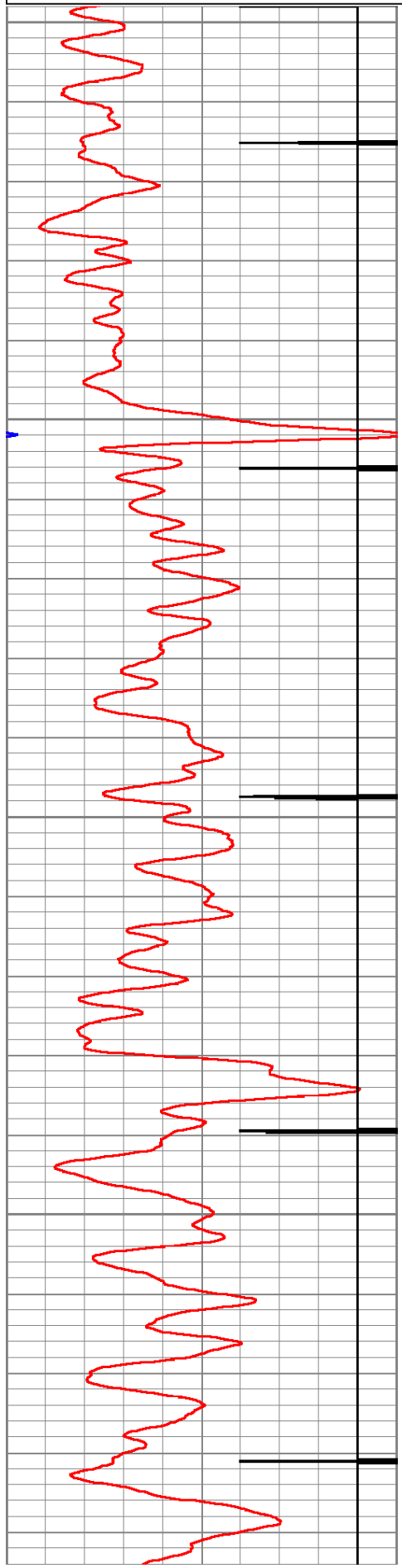
Comments

****LOG SHIFTED UP 3.3' FROM G.L. TO
CORRELATE W/ 14-1'S OPEN HOLE LOG****

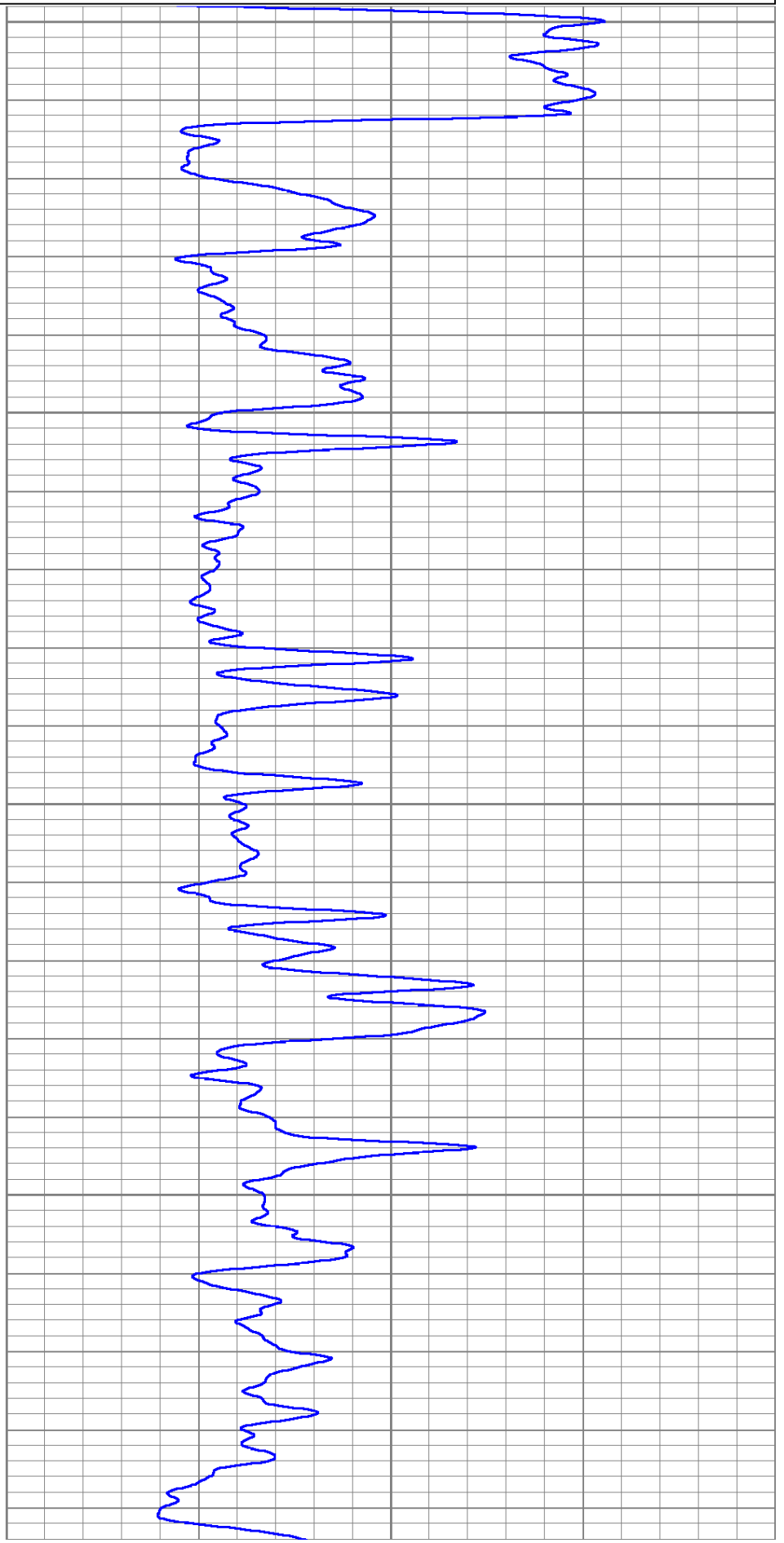
Database File: 112-1754.db
Dataset Pathname: pass.2.02
Presentation Format: gr-n-ccl
Dataset Creation: Mon Nov 21 15:49:24 2016
Charted by: Depth in Feet scaled 1:240

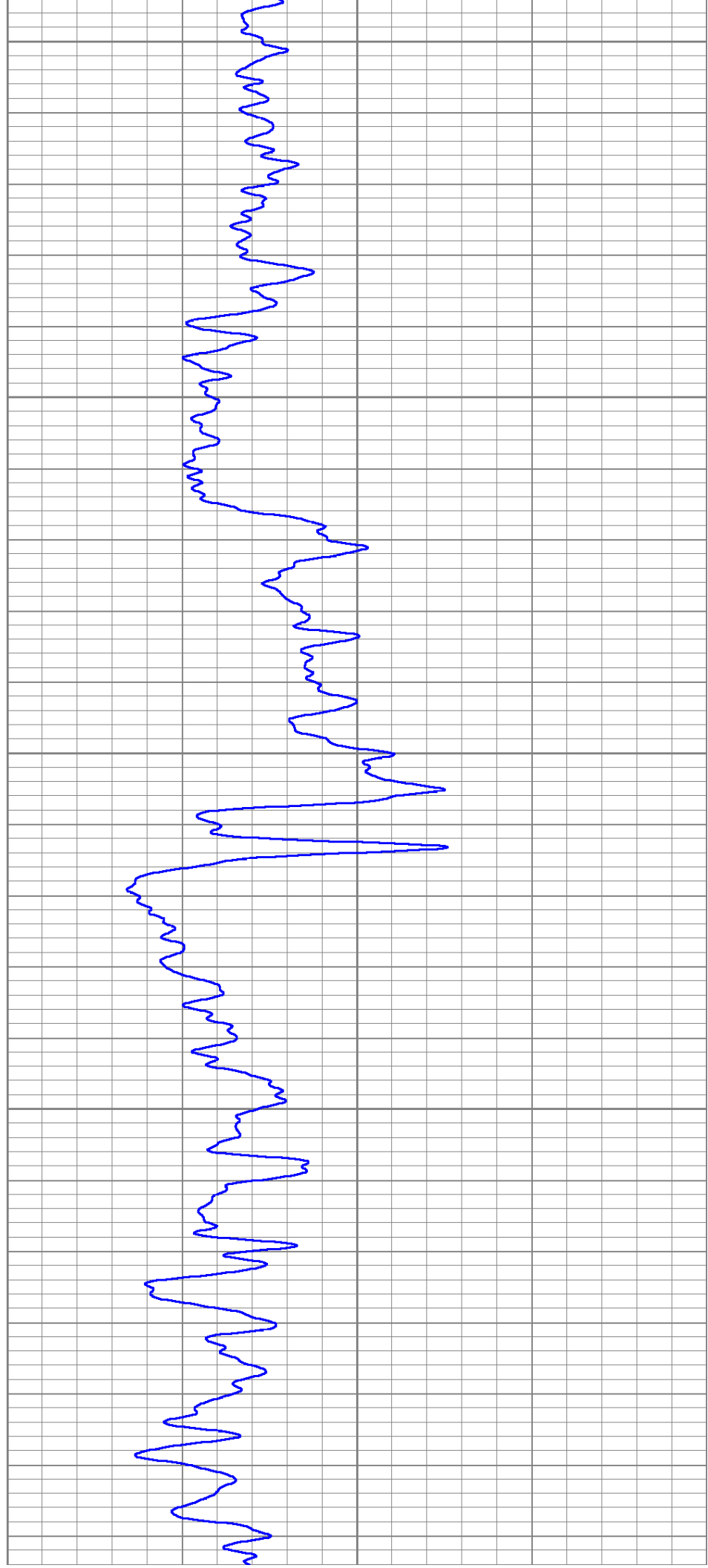
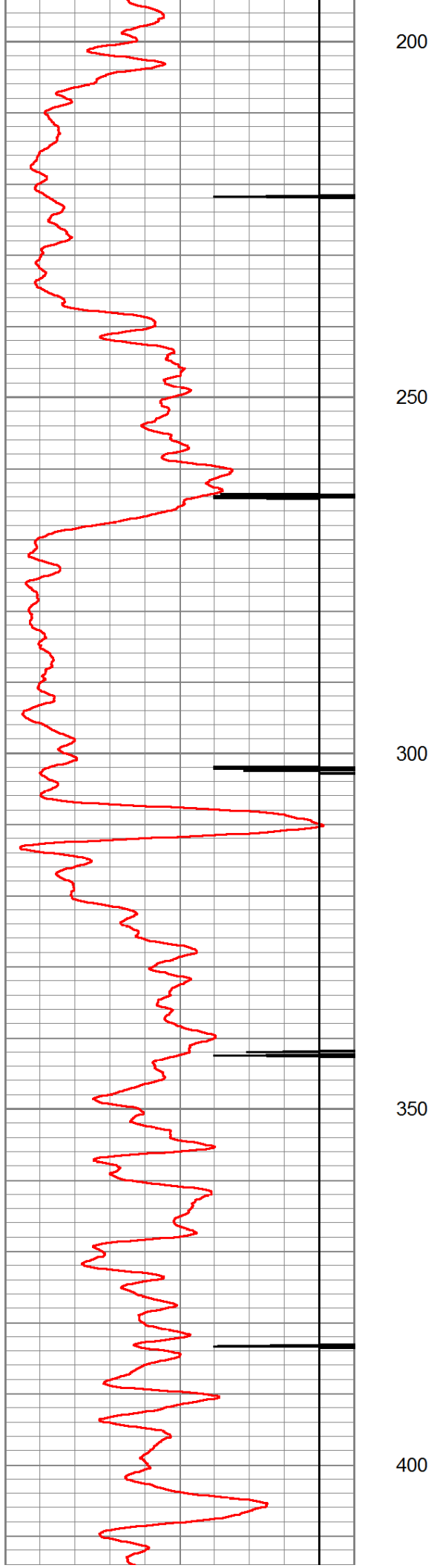
0	GR (GAPI)	150
150	GR (GAPI)	300
-9	CCL	1

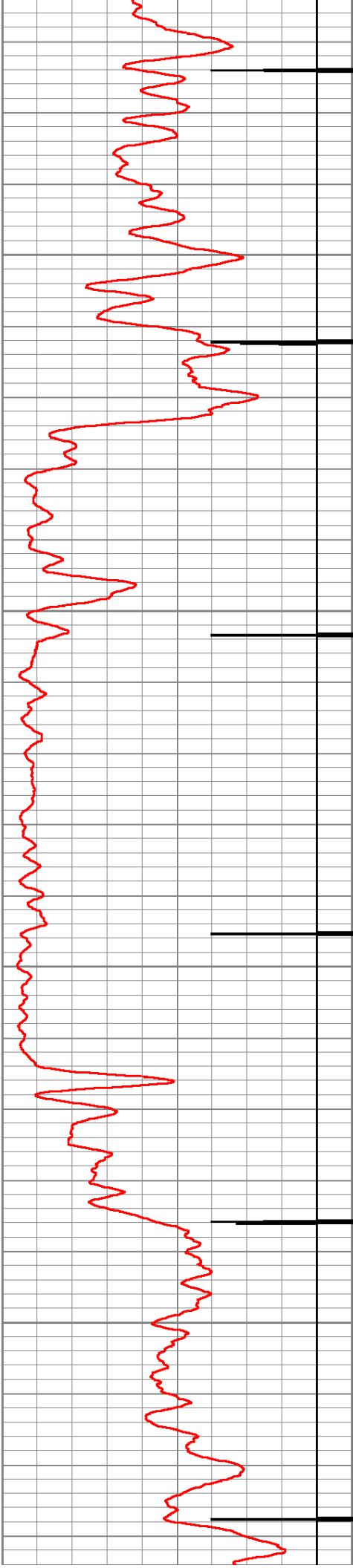
0	NEU (NAPI)	1500
---	------------	------



0
Fluid Level
50
100
150





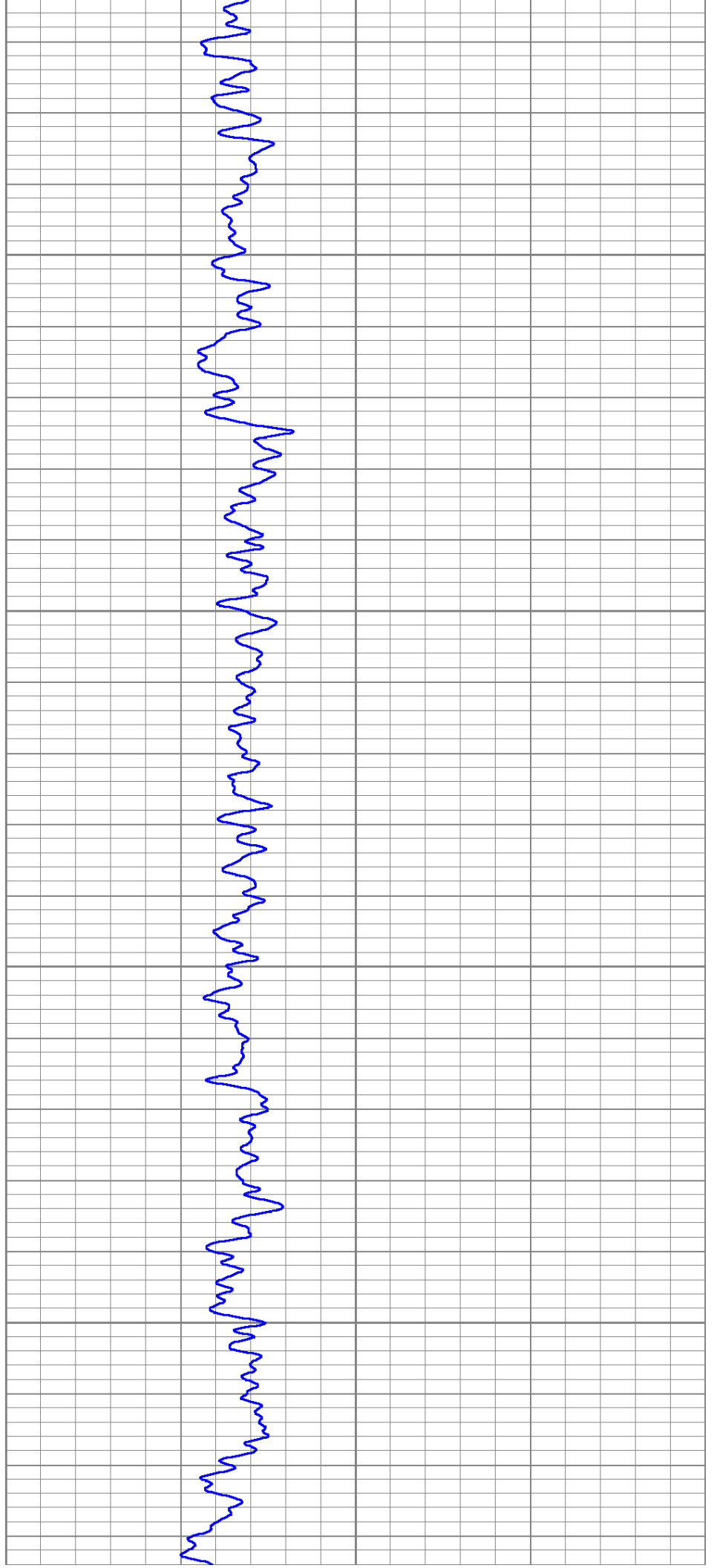


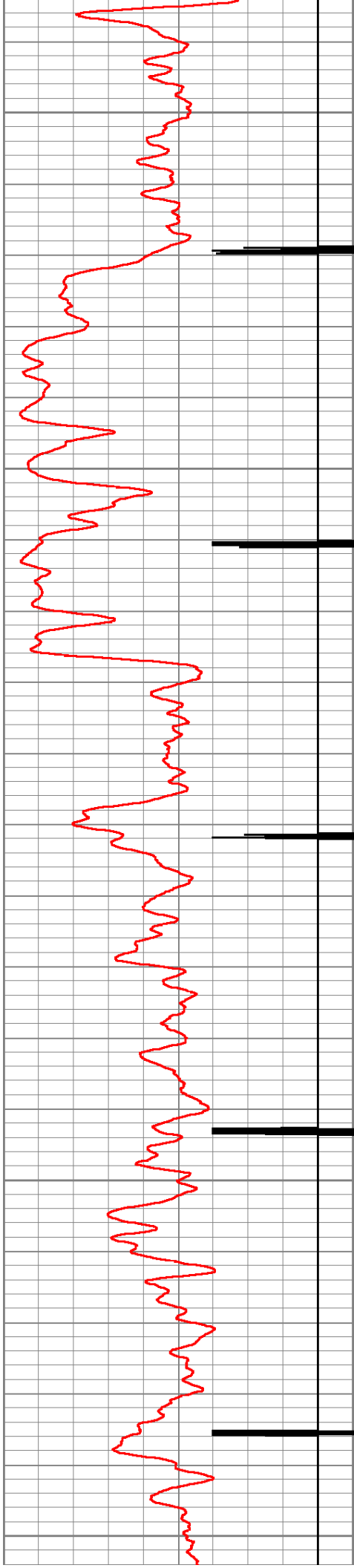
450

500

550

600





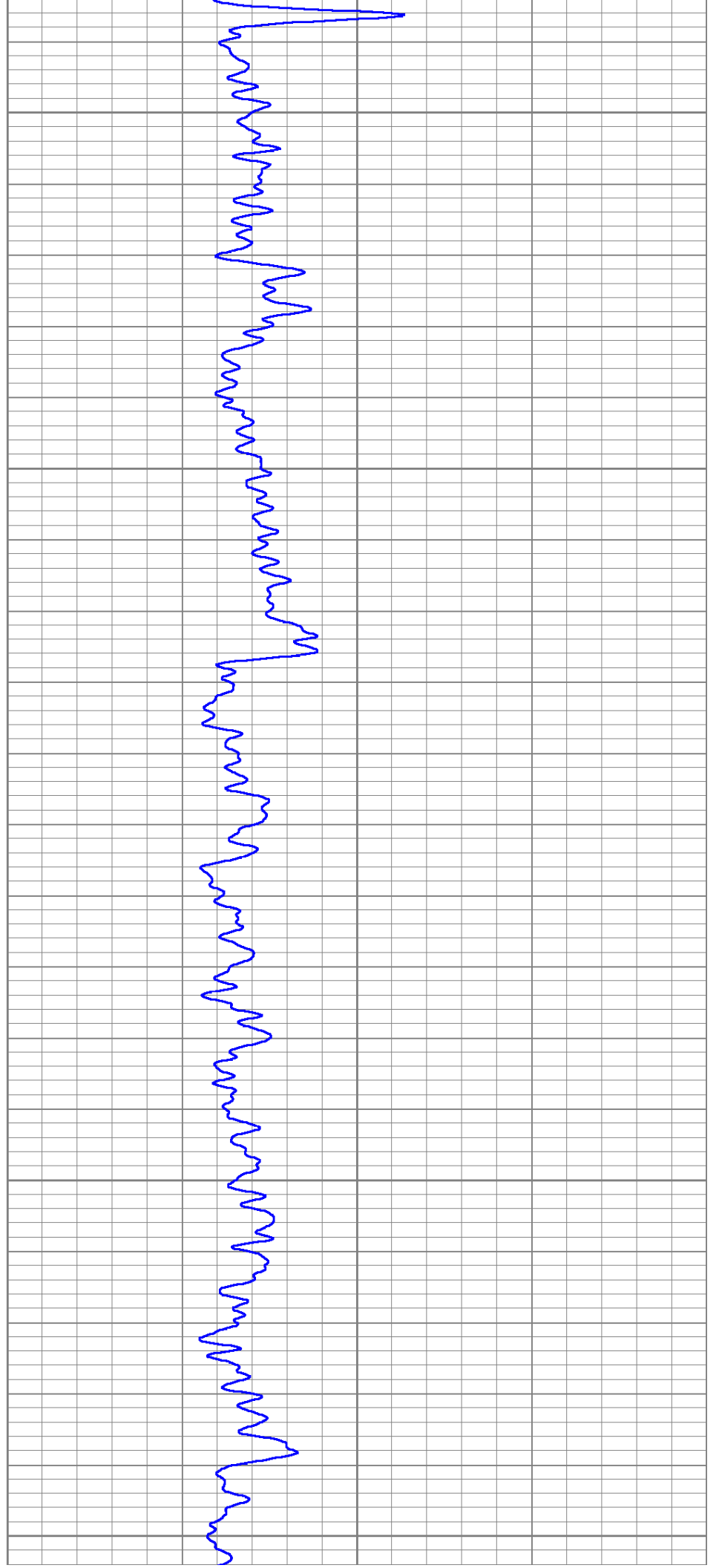
650

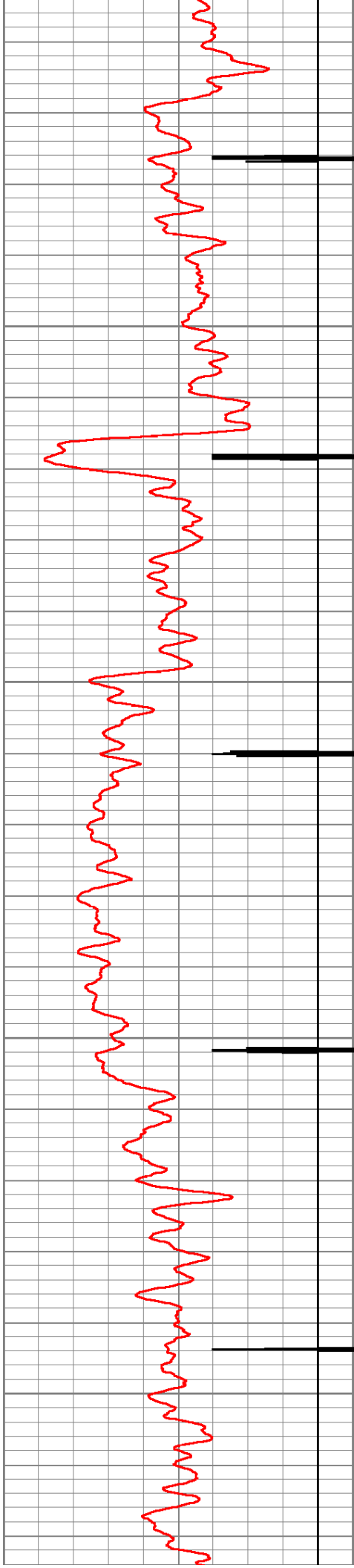
700

750

800

850



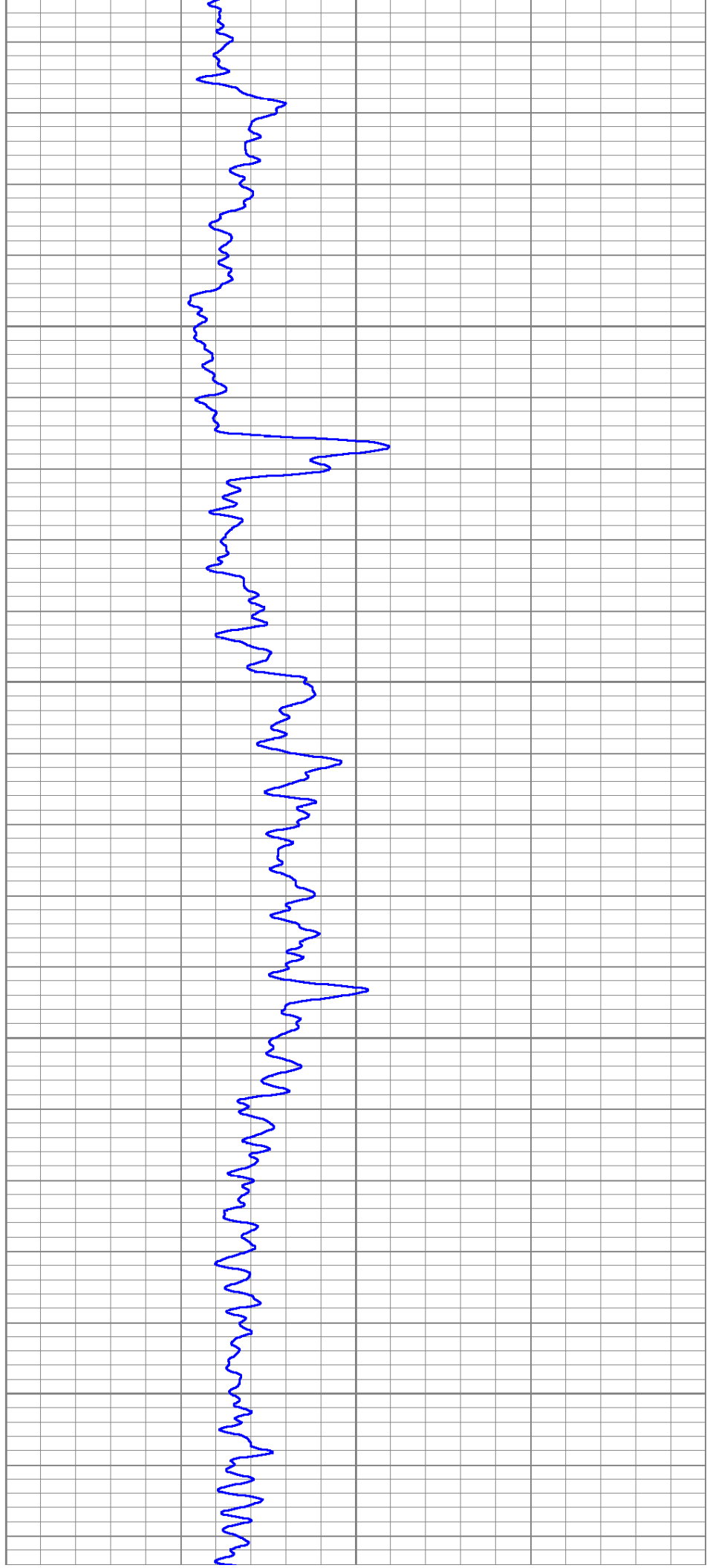


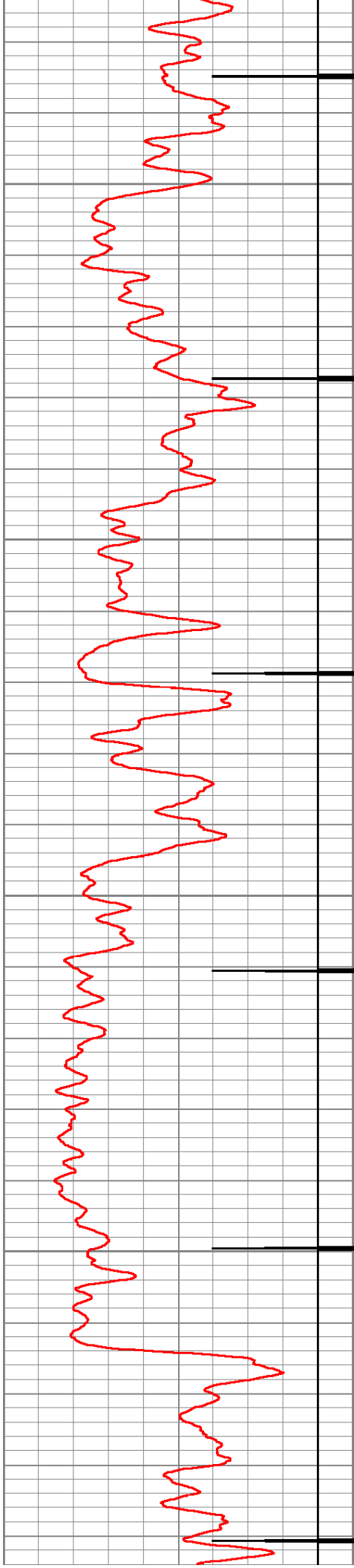
900

950

1000

1050



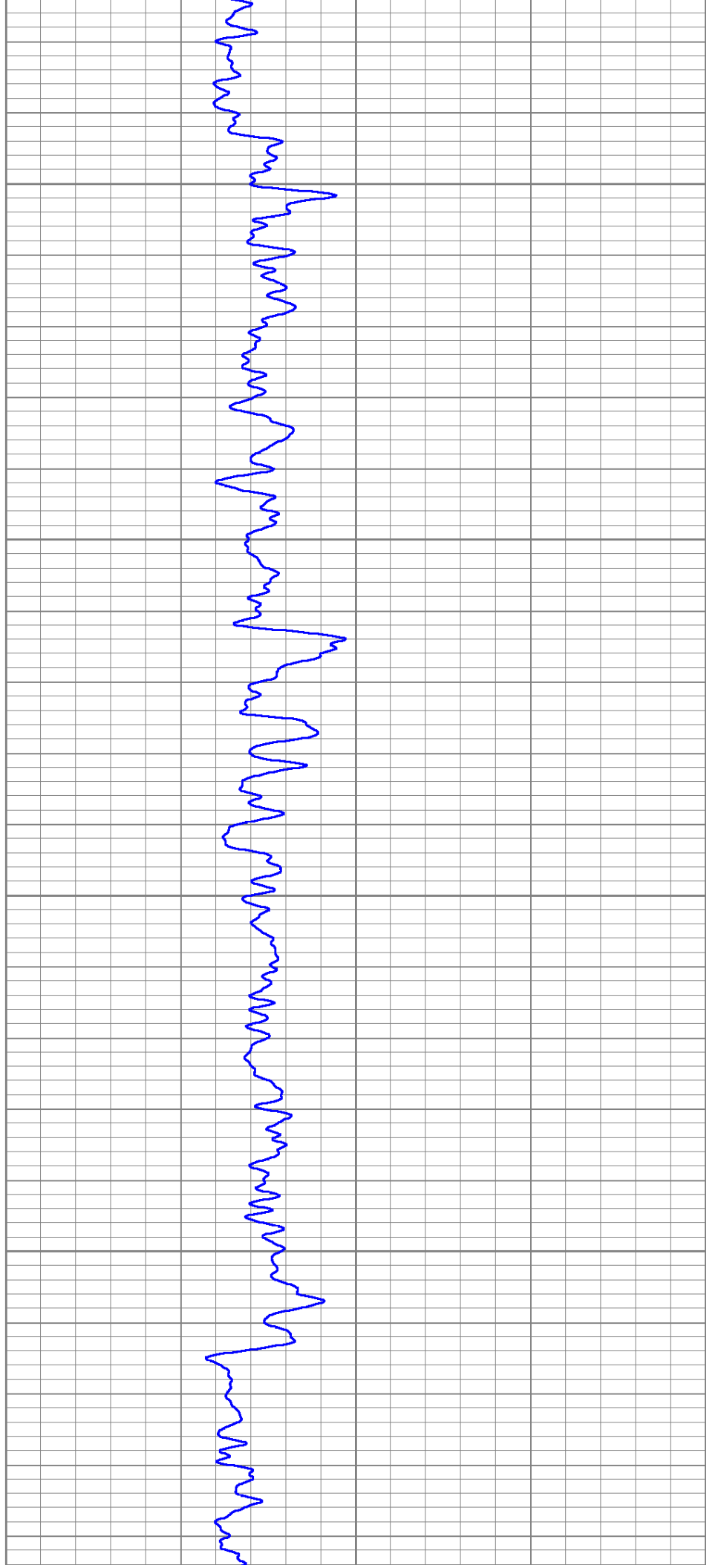


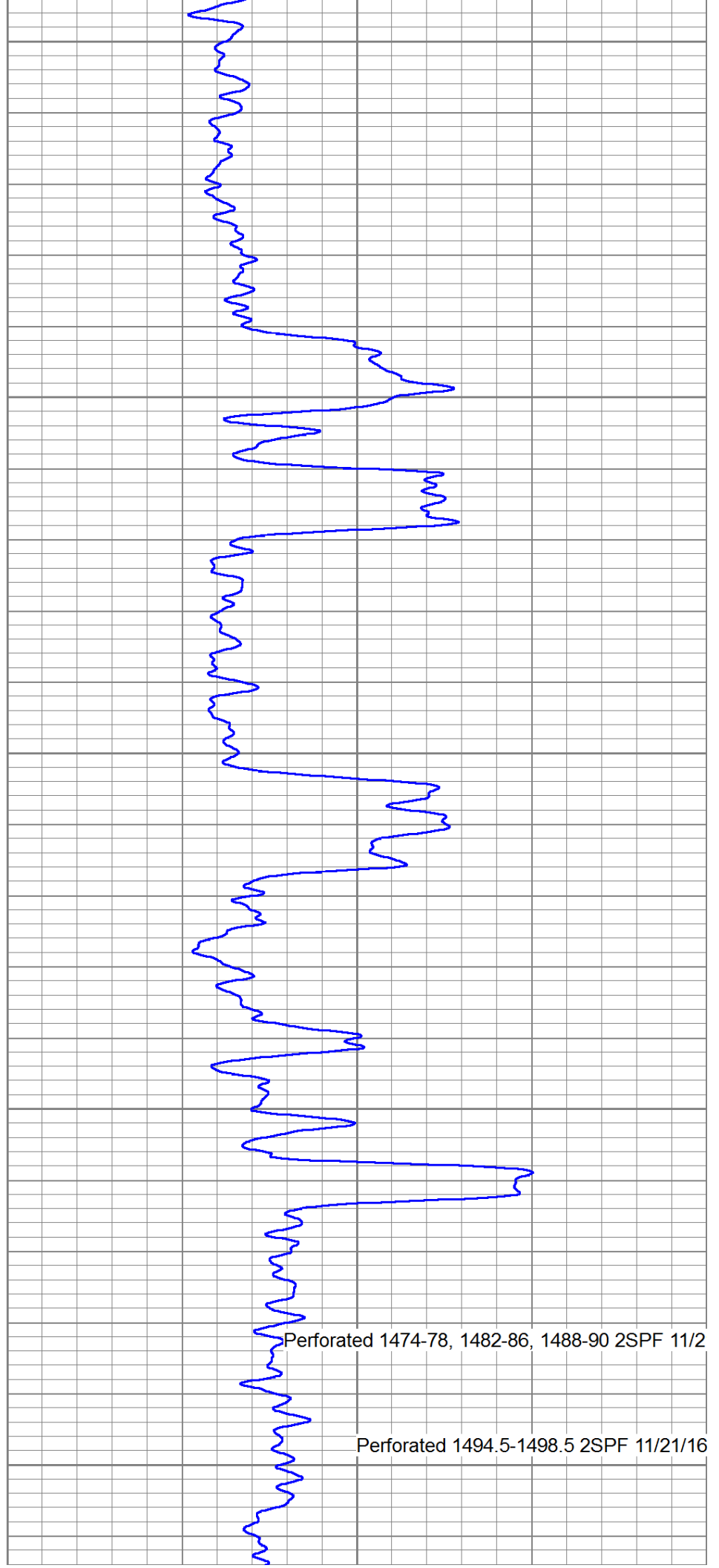
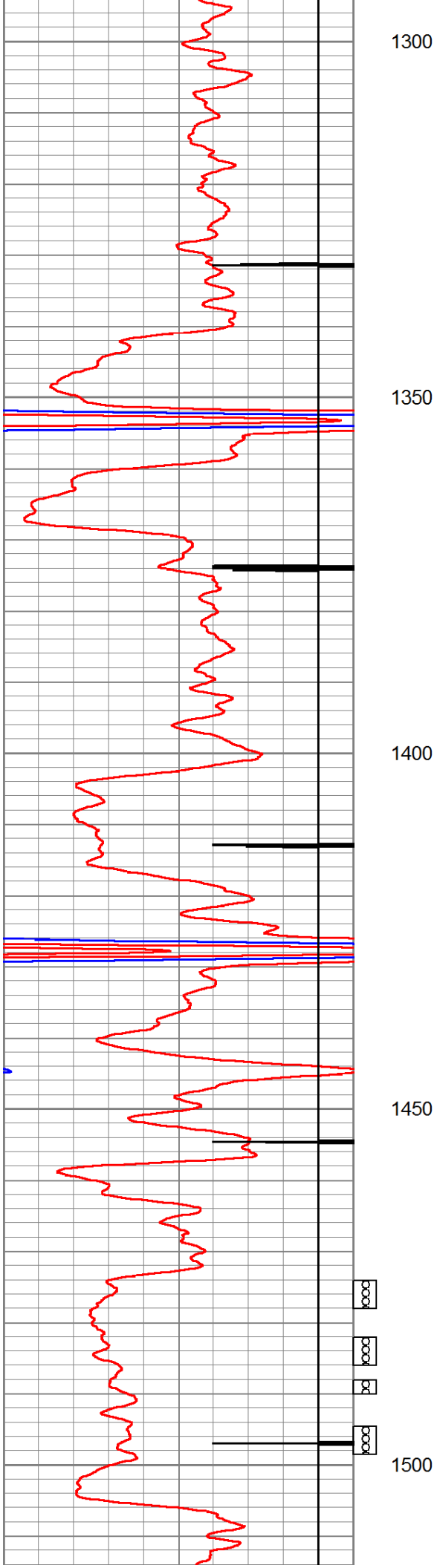
1100

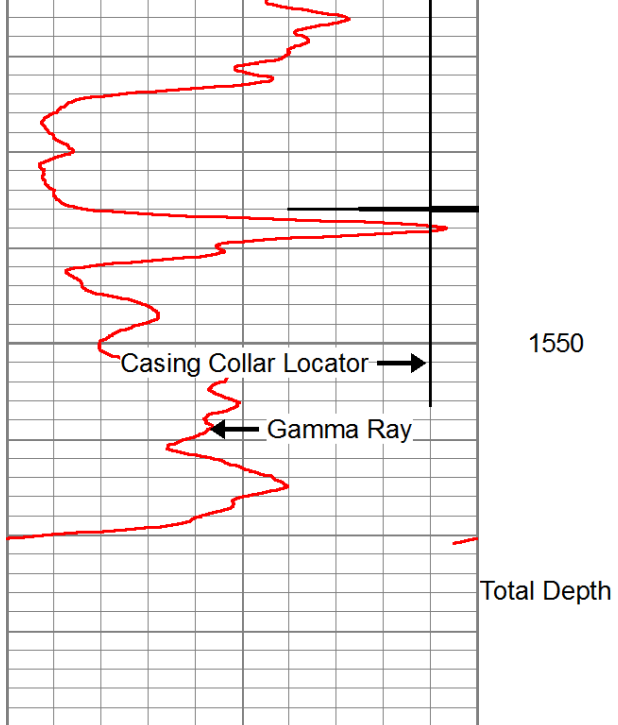
1150

1200

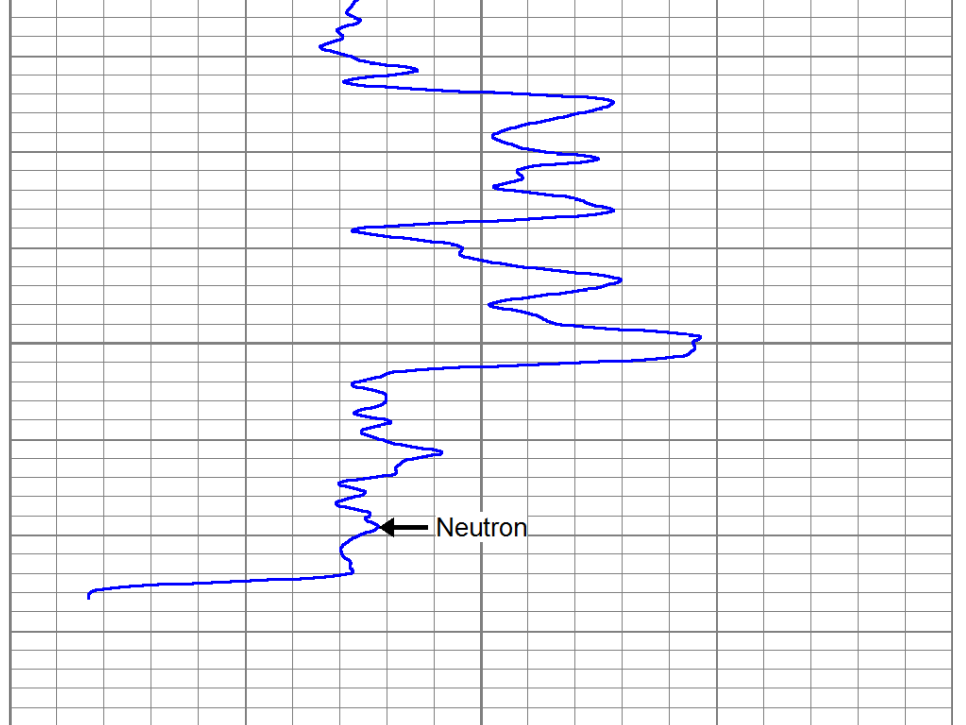
1250







0	GR (GAPI)	150
150	GR (GAPI)	300
-9	CCL	1

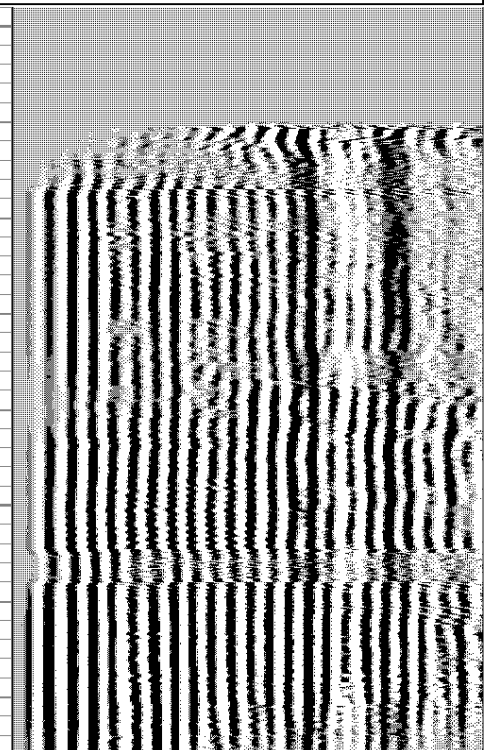
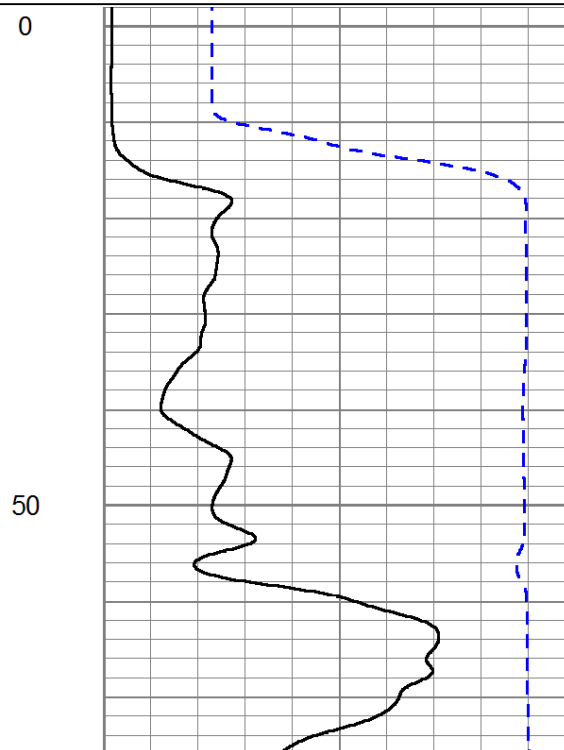
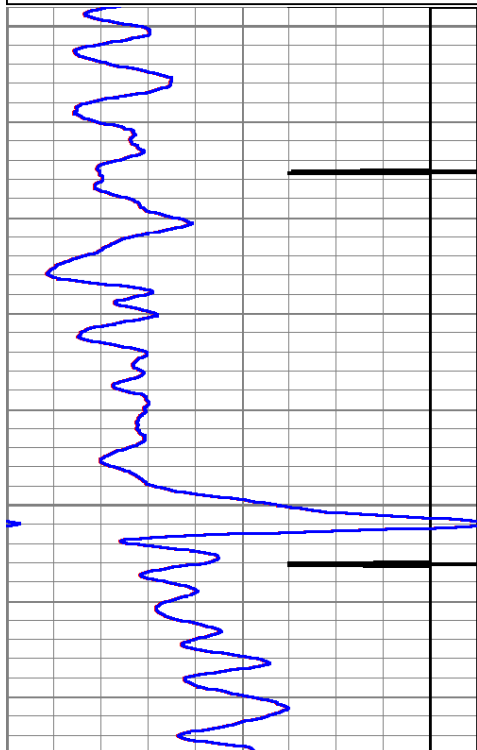


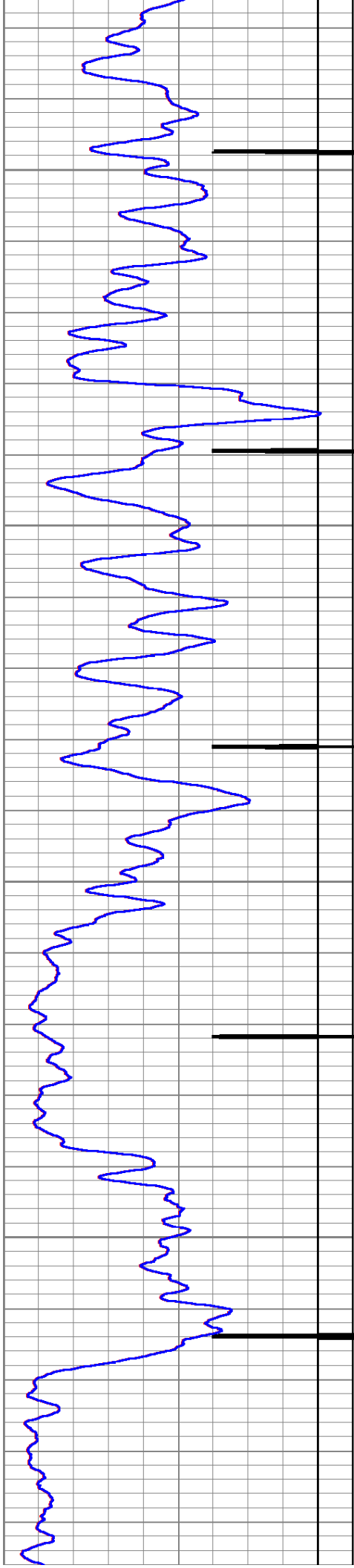
0	NEU (NAPI)	1500
---	------------	------

Database File: 112-1754.db
 Dataset Pathname: pass2.02
 Presentation Format: cb101
 Dataset Creation: Mon Nov 21 15:49:24 2016
 Charted by: Depth in Feet scaled 1:240

9	Collar Locator	-1
0	Gamma Ray (GAPI)	150
150	GR (GAPI)	300

0	Amplitude (mV)	100	200	CBL3	1200
600	Travel Time (usec)	200			



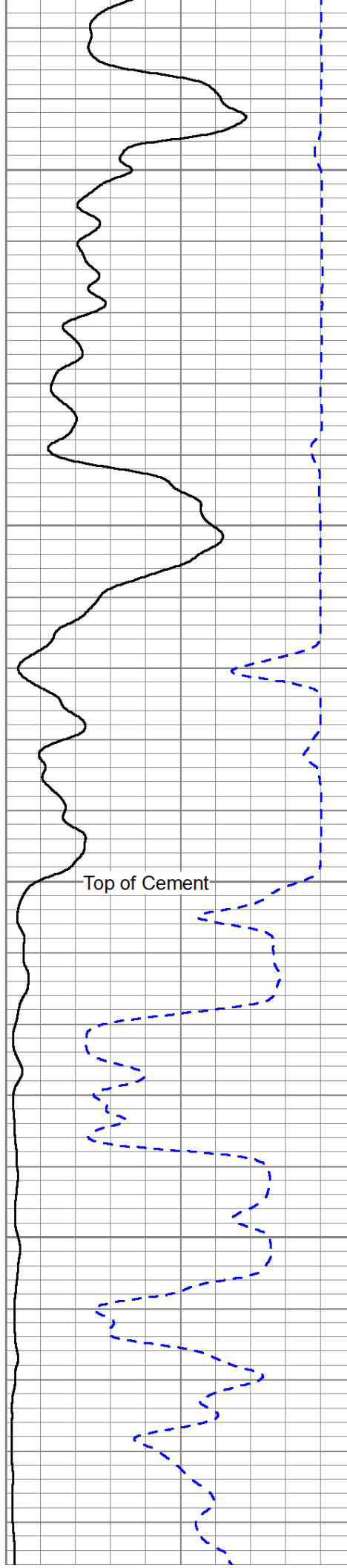


100

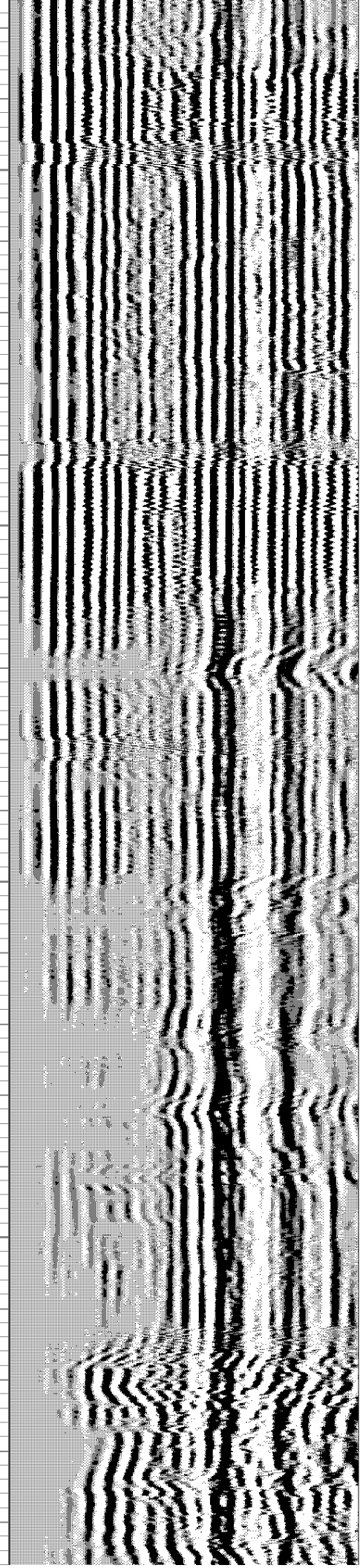
150

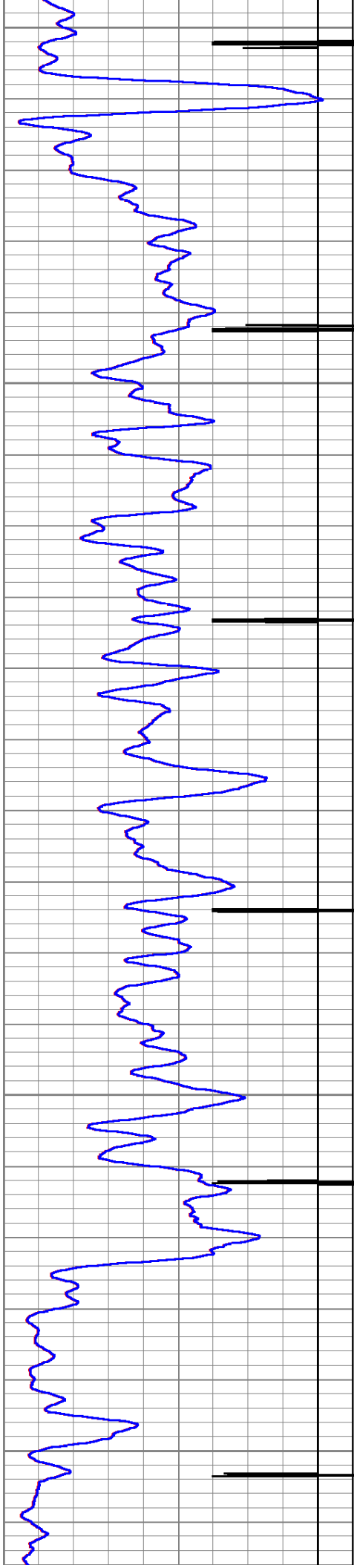
200

250



Top of Cement





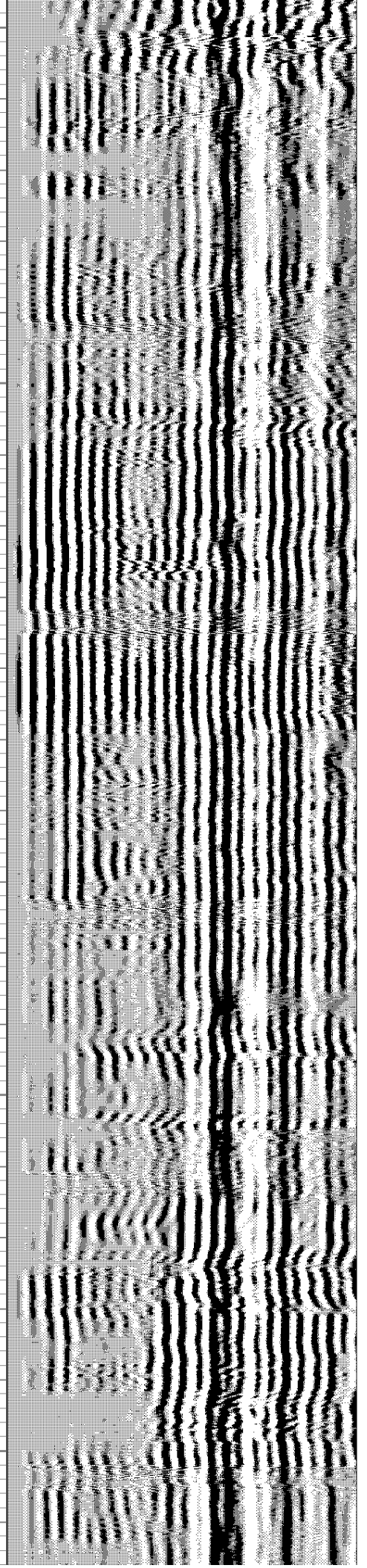
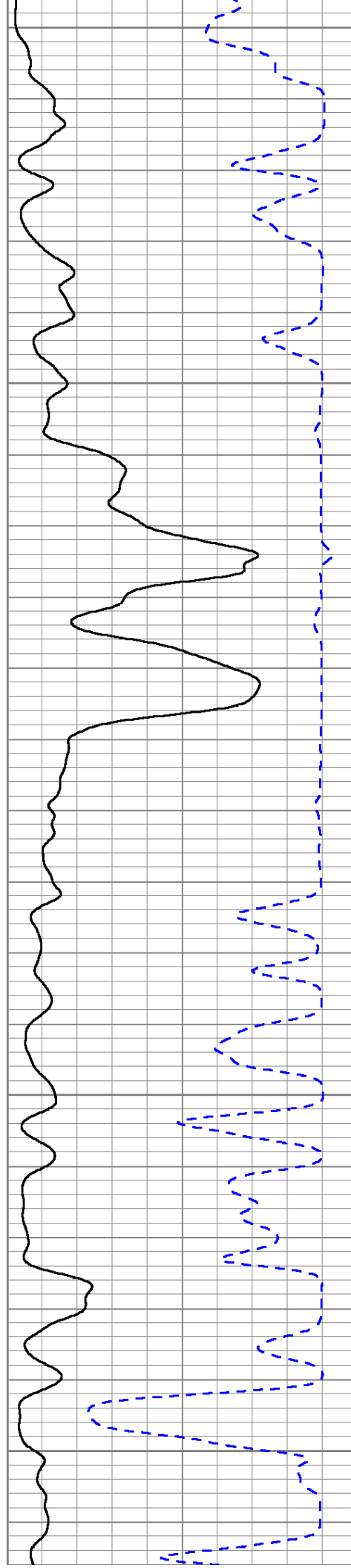
300

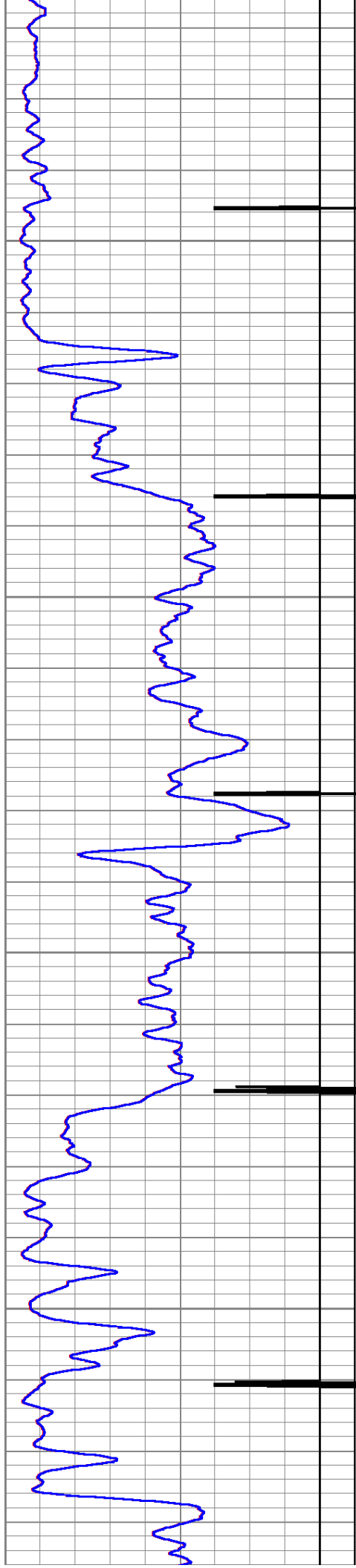
350

400

450

500



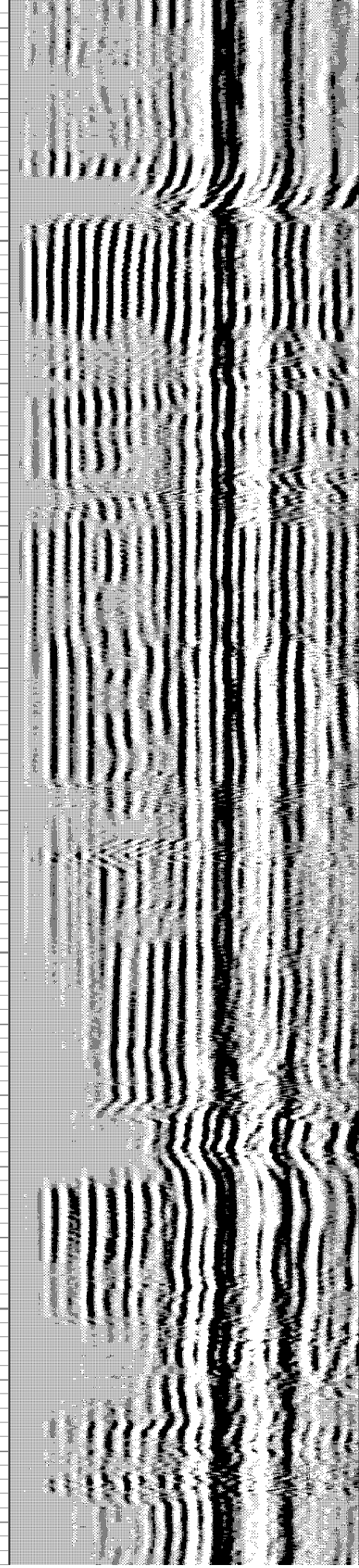
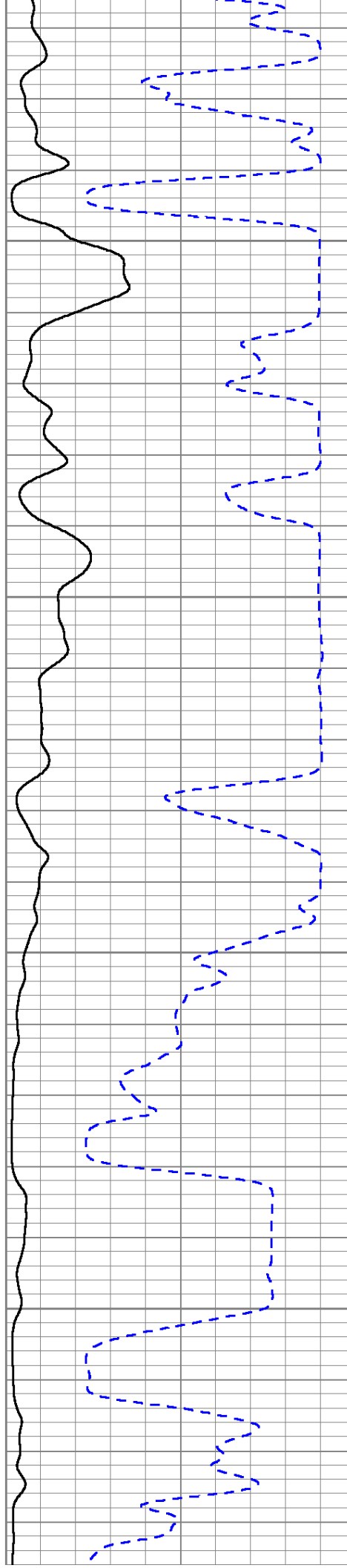


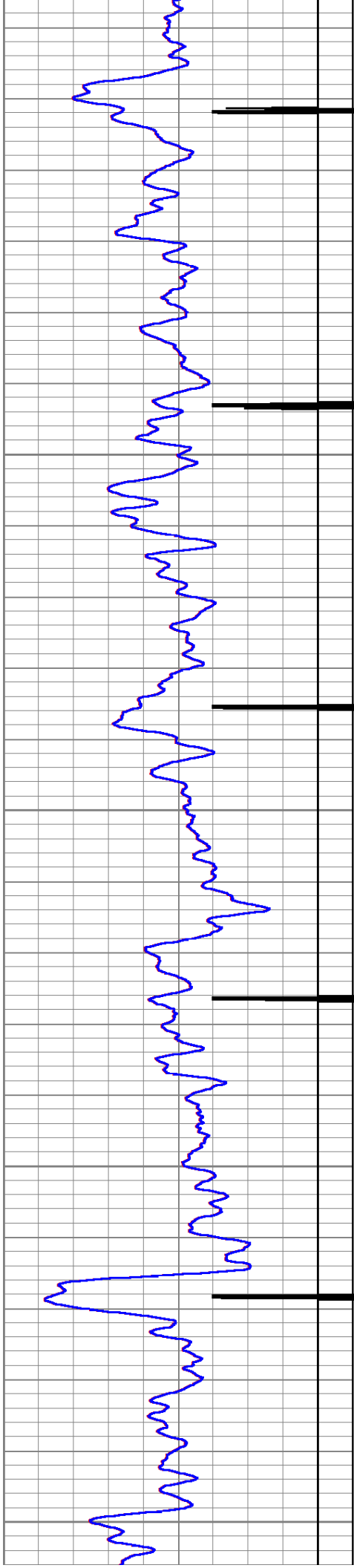
550

600

650

700





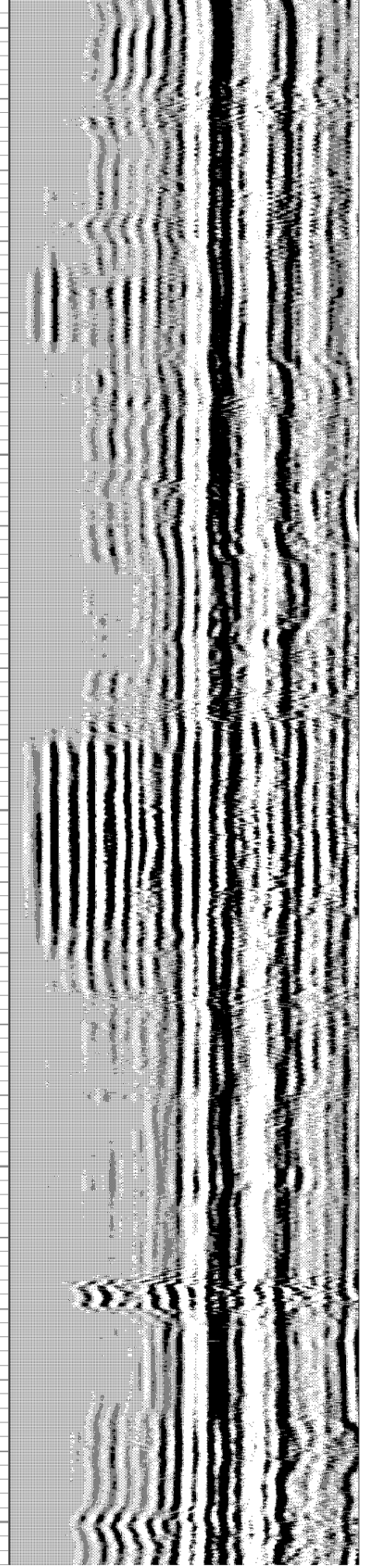
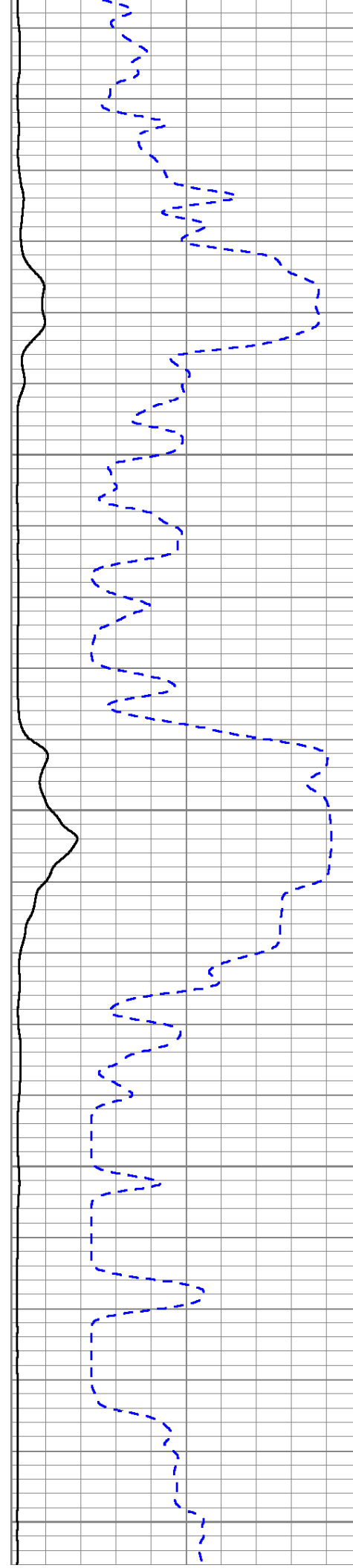
750

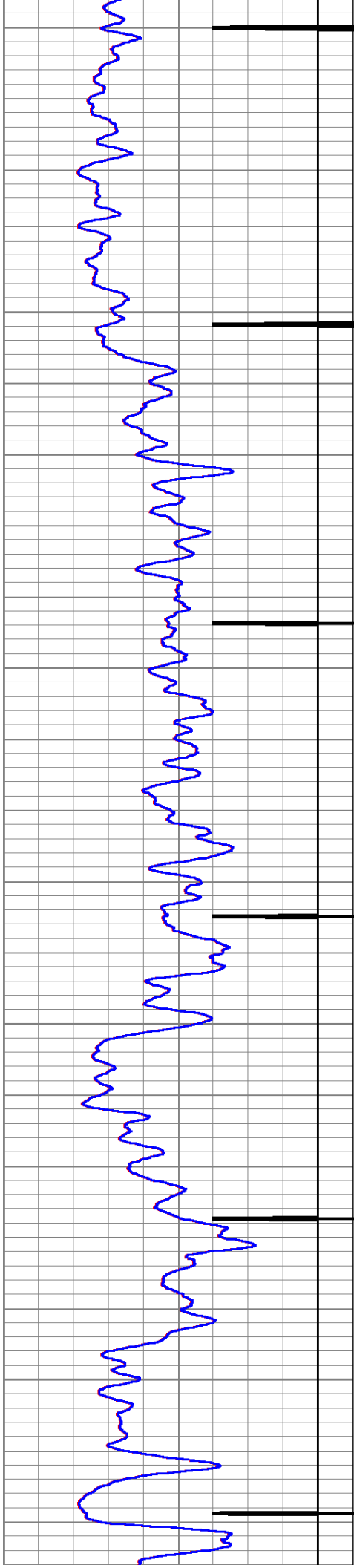
800

850

900

950



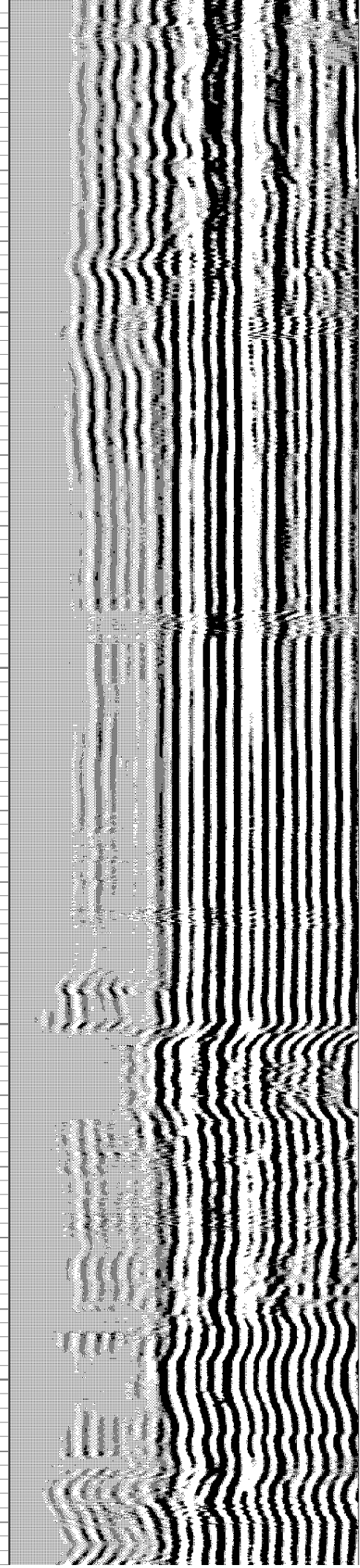
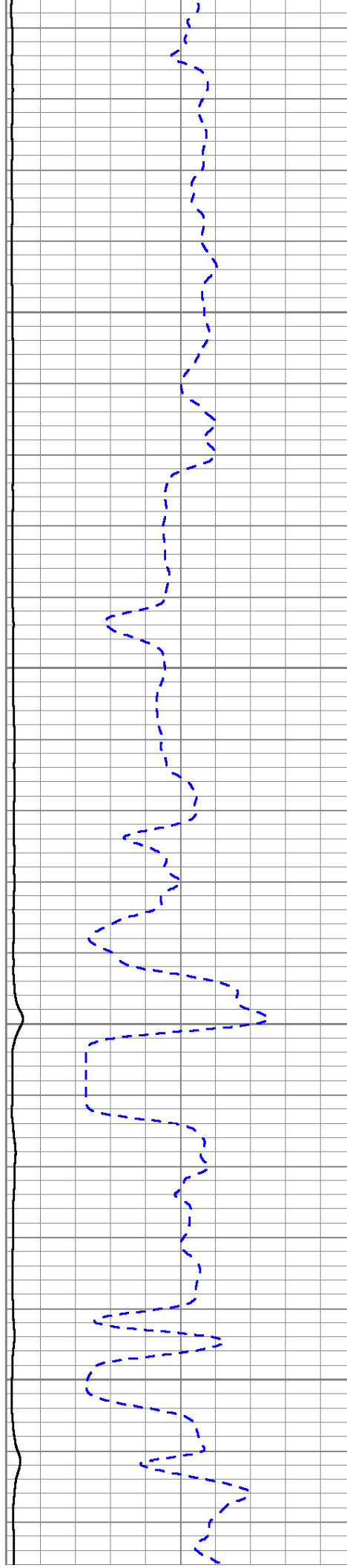


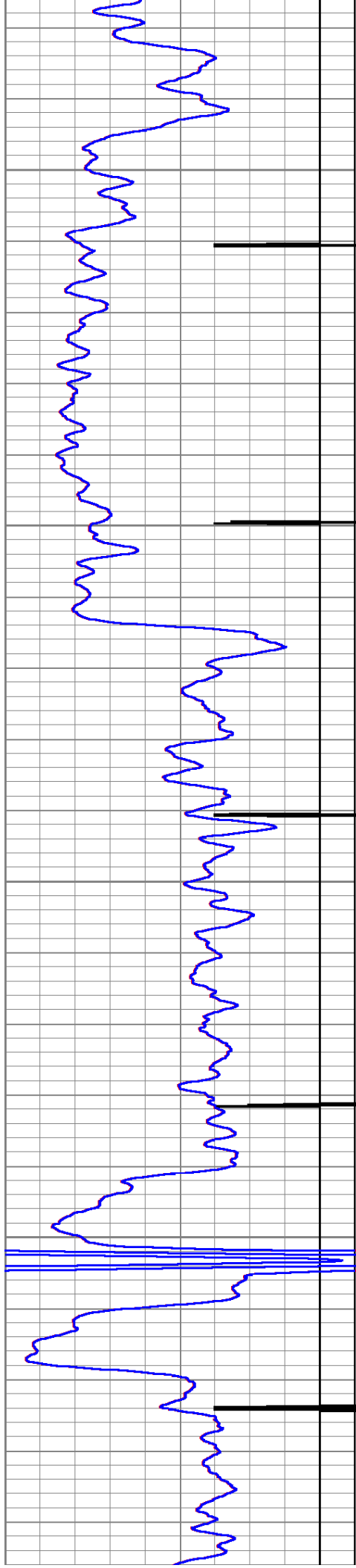
1000

1050

1100

1150





1200

1250

1300

1350

