



# MIDWEST SURVEYS

LOGGING - PERFORATING - CONSULTING SERVICES

P.O. Box 68, Osawatimie, KS 66064

913 / 755 - 2128

## GAMMA RAY / NEUTRON / CCL

File No.

Company Haas Petroleum, LLC.

Well East Lidikay No. 7i-HP

Field Paola / Rantoul

County Franklin State Kansas

Location

2320' FSL & 470' FEL

NW-NE-NE-SE

API# 15-059-26,896

Sec. 4

Twp. 16S

Rge. 21E

Elevation 990'

Elevation

KB, NA

DF, NA

GL, 990'

Other Services  
Perforate

Date 02-26-2015

Run Number

One

Depth Driller

800.0

Depth Logger

782.0

Bottom Logged Interval

781.0

Top Log Interval

20.0

Fluid Level

Full

Type Fluid

Water

Density / Viscosity

NA

Salinity - PPM Cl

NA

Max Recorded Temp

NA

Estimated Cement Top

0.0

Equipment No.

102

Location

Osawatimie

Recorded By

Gary Windisch

Witnessed By

John Haas

RUN

BORE-HOLE RECORD

CASING RECORD

TO

No.

BIT

FROM

TO

SIZE

WGT.

FROM

TO

One

9.875"

0.0

20.0

7.00"

17.0 #

0.0

20.0

Two

5.625"

20.0

800.0

2.875"

6.5 #

0.0

785.0

<<< Form Here >>>

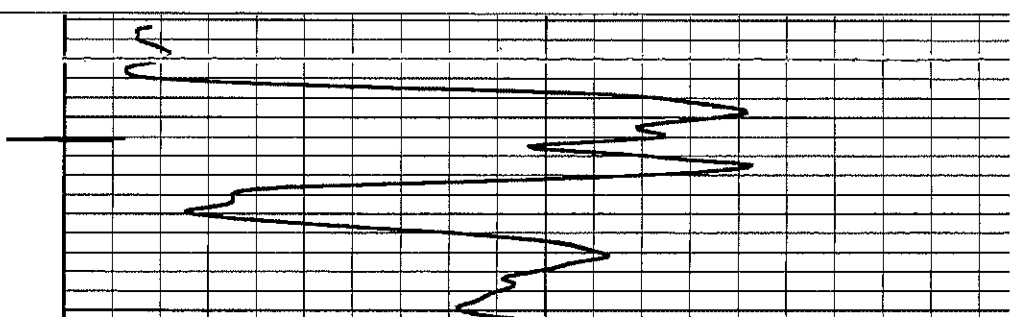
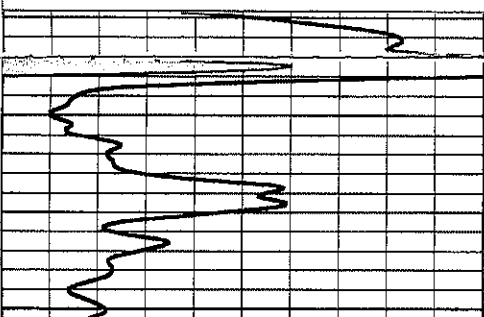
All interpretations are opinions based on inferences from electrical or other measurements and we cannot and do not guarantee the accuracy or correctness of any interpretation, and we shall not, except in the case of gross or willful negligence on our part, be liable or responsible for any loss, costs, damages, or expenses incurred or sustained by anyone resulting from any interpretation made by any of our officers, agents or employees. These interpretations are also subject to our general terms and conditions set out in our current Price Schedule.

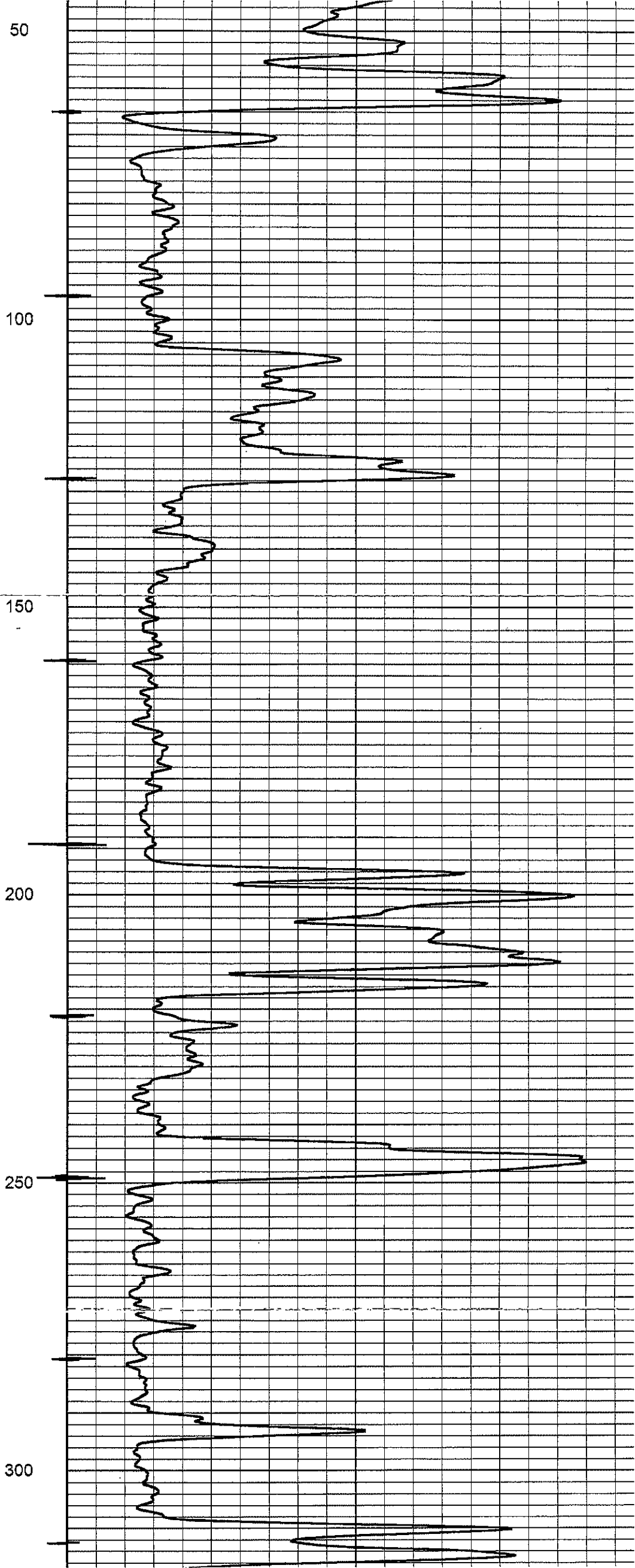
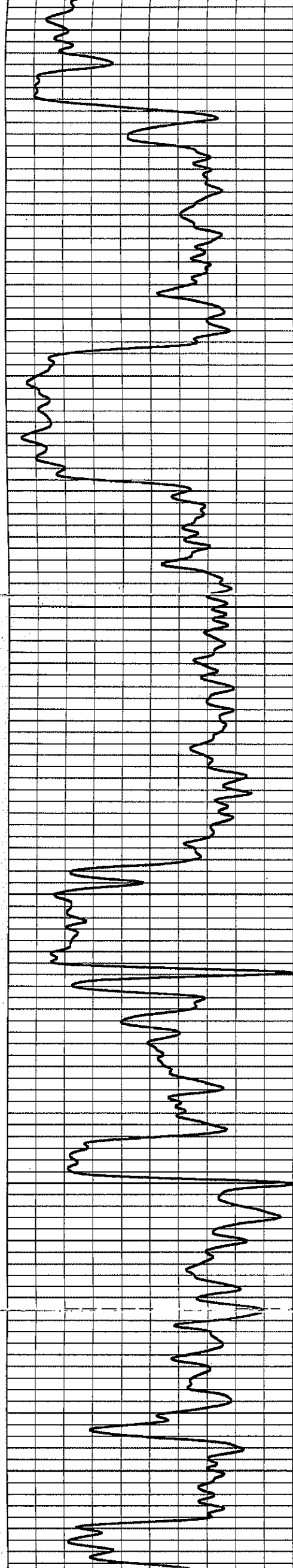
### Comments

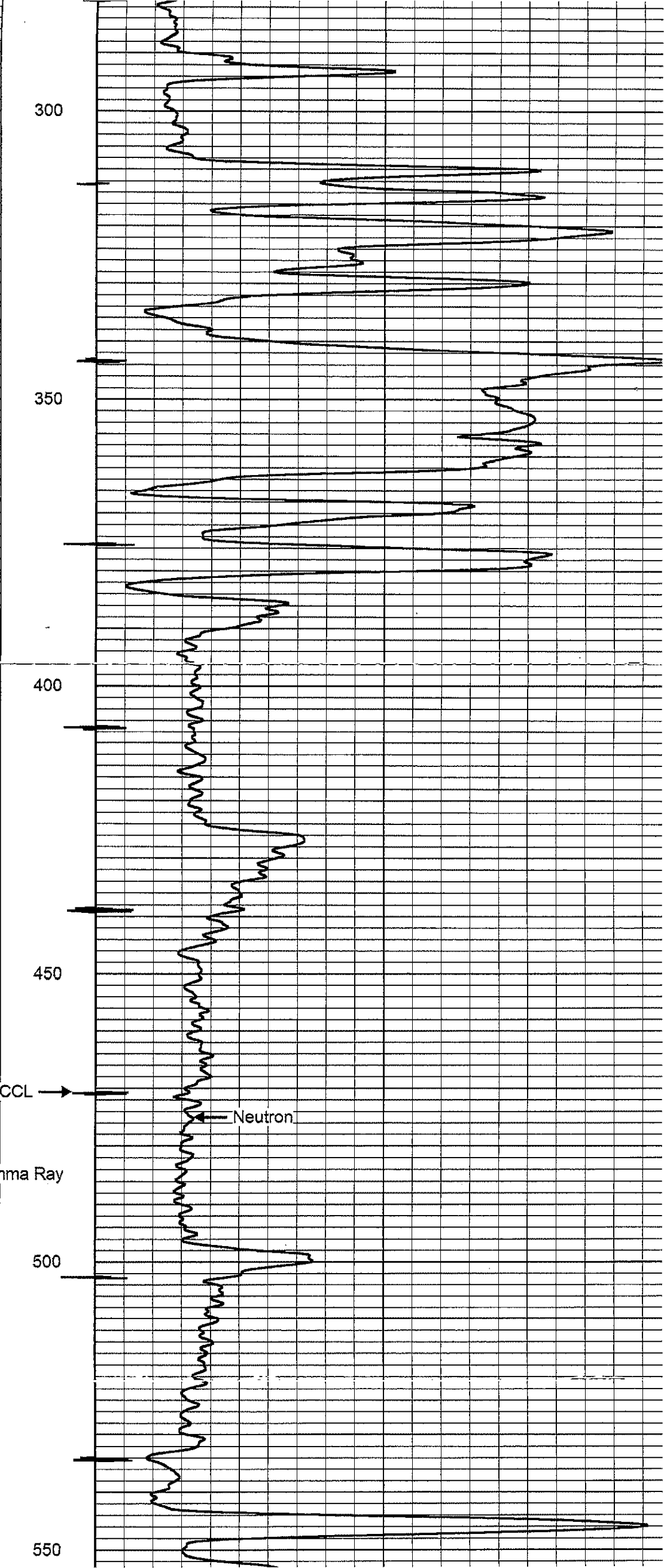
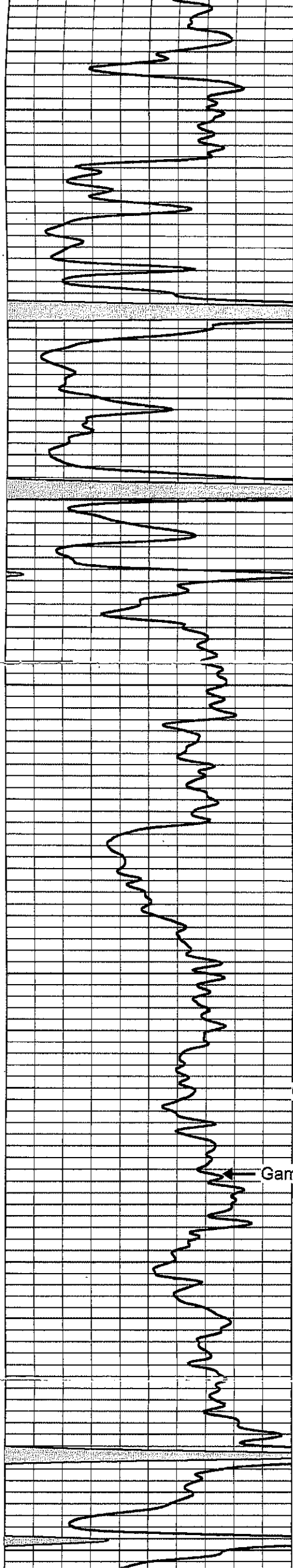
Drilling Contractor :  
Skyy Drilling, LLC.  
Rig #5

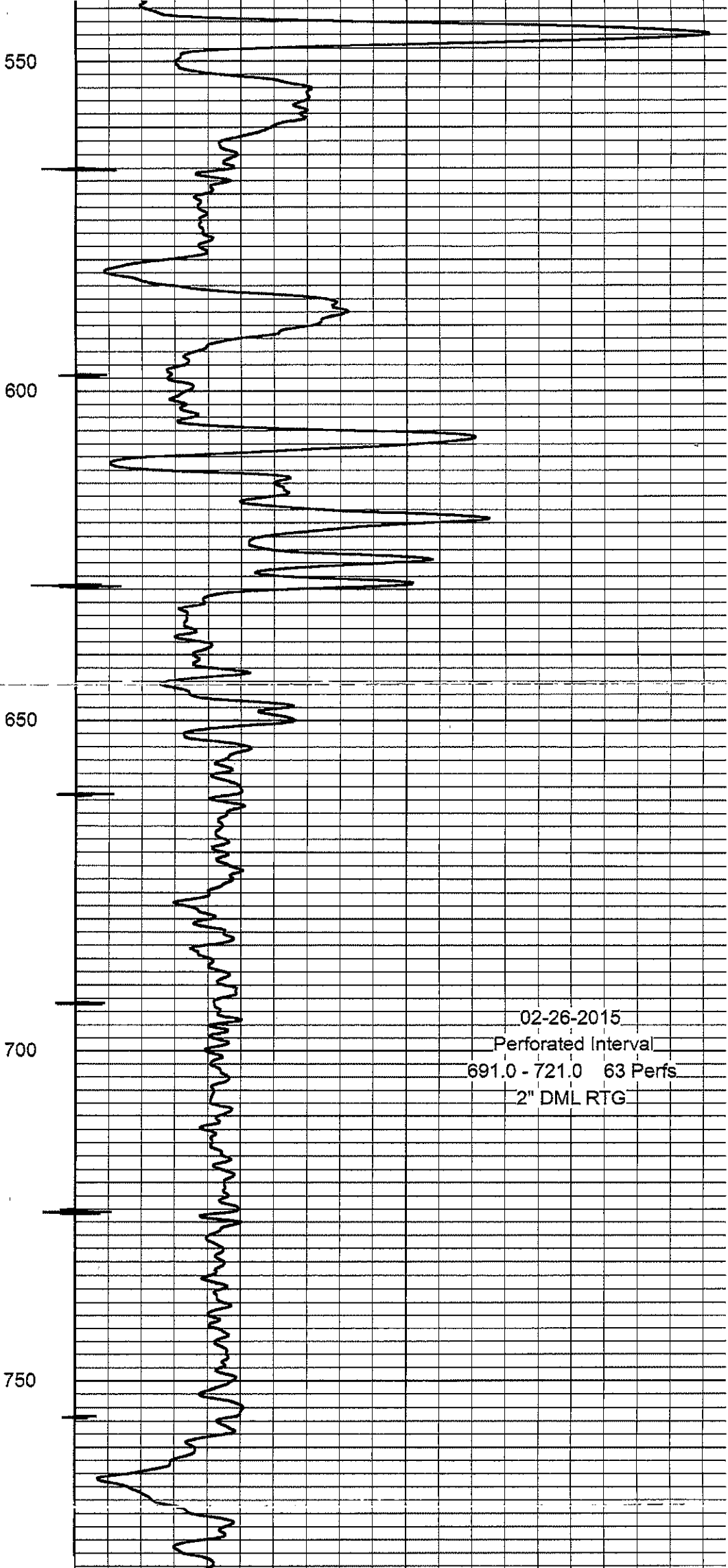
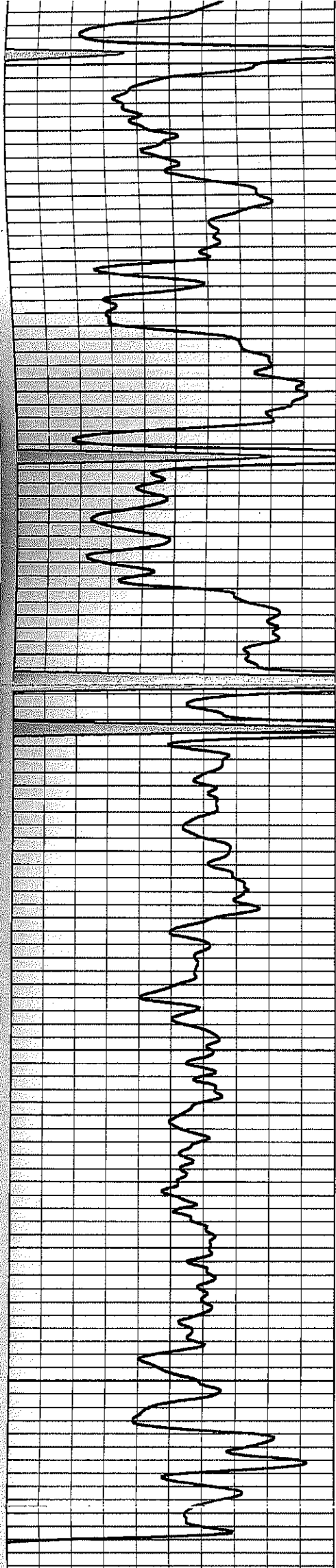
Database File: lidikay 7ihpe.db  
Dataset Pathname: pass1  
Presentation Format: gr-n-ccl  
Dataset Creation: Thu Feb 26 10:16:48 2015 by Log SCH 111116  
Charted by: Depth in Feet scaled 1:240

0	Gamma Ray (cps)	150	-1 CCL 1	100	Neutron (cps)	190
150	Gamma Ray (cps)	300				









02-26-2015  
 Perforated Interval  
 691.0 - 721.0 63 Perfs  
 2" DML RTG

0	Gamma Ray (cps)	150
150	Gamma Ray (cps)	300

-1 CCL 1
100

Neutron (cps)	1900
---------------	------