



Pioneer Energy Services

Microresistivity Log

15-101-22542-00-00

API No.

Company Larson Engineering, Inc.

Well Ehmke-Fisher # 1-19

Field North Fork

County Lane State Kansas

Location 2572' FNL & 2017' FWL

Sec: 19 Twp: 17S Rge: 29W

Other Services
CNL/CDL
DIL

Elevation
K.B. 2838
D.F. G.I.L. 2829

Permanent Datum Ground Level Elevation 2829
Log Measured From Kelly Bushing 9 Ft. Above Perm. Datum
Drilling Measured From Kelly Bushing

Date	12/2/2014
Run Number	One
Depth Driller	4620
Depth Logger	4620
Bottom Logged Interval	4619
Top Log Interval	3600
Casing Driller	8.625 @ 253
Casing Logger	255
Bit Size	7.875
Type Fluid in Hole	Chemical
Salinity, ppm CL	1500
Density / Viscosity	9.1 52
pH / Fluid Loss	10.5 6.8
Source of Sample	Flowline
Rm @ Meas. Temp	0.70 @ 52
Rmf @ Meas. Temp	0.52 @ 52
Rmc @ Meas. Temp	0.94 @ 52
Source of Rmf / Rmc	Charts
Rm @ BHT	0.29 @ 124
Operating Rig Time	3 Hours
Max Rec. Temp. F	124
Equipment Number	91
Location	Hays
Recorded By	M. Beougher
Witnessed By	Vern Schrag
	D. Schmidt

<<< Fold Here >>>

All interpretations are opinions based on inferences from electrical or other measurements and we cannot and do not guarantee the accuracy or correctness of any interpretation, and we shall not, except in the case of gross or willful negligence on our part, be liable or responsible for any loss, costs, damages, or expenses incurred or sustained by anyone resulting from any interpretation made by any of our officers, agents or employees. These interpretations are also subject to our general terms and conditions set out in our current Price Schedule.

Comments

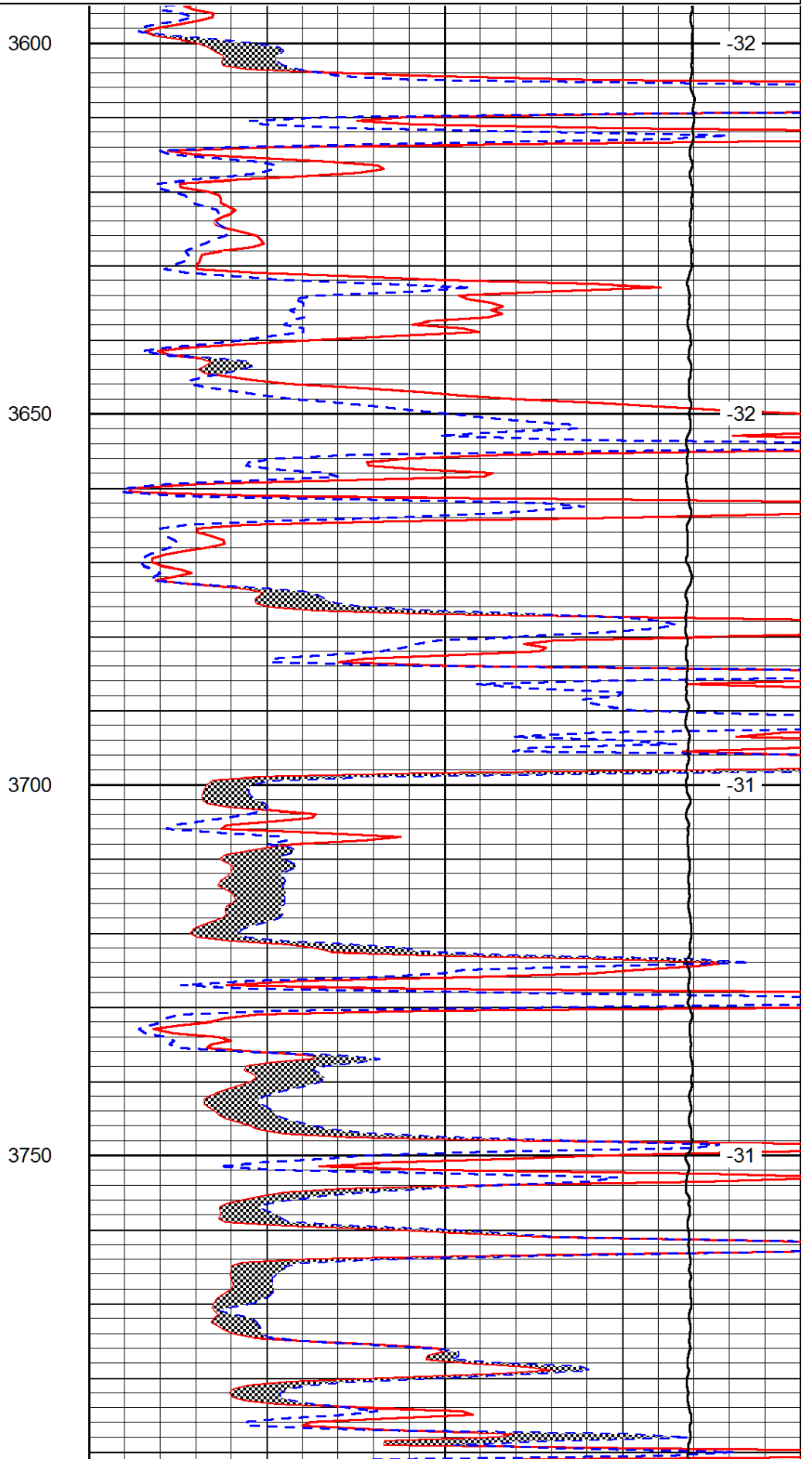
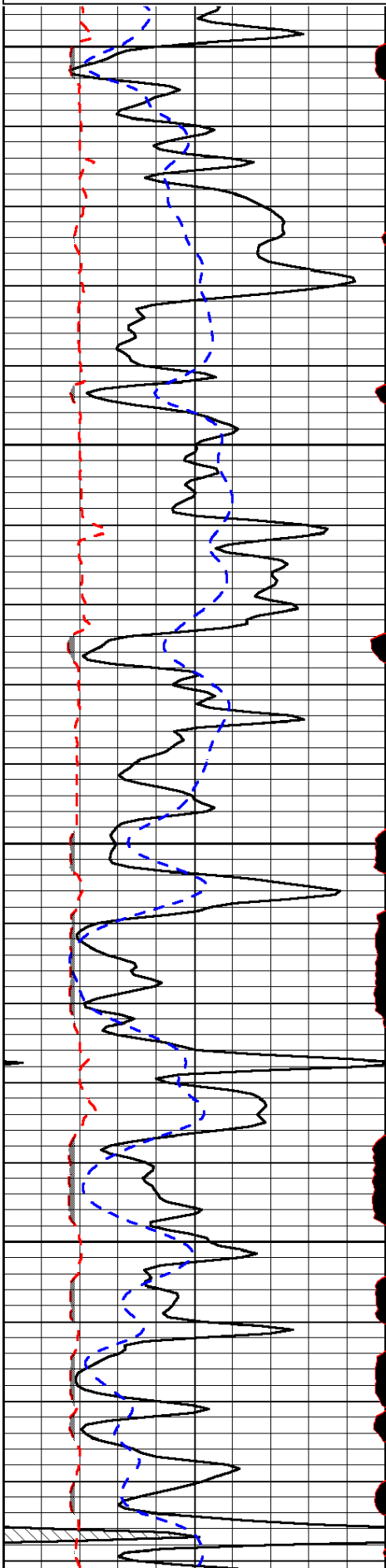
Thank you for using Log-Tech, Inc.
 (785) 625-3858
 Dighton,
 7 West to Eagle RD,
 5 North to 200 RD,
 1 East to Frontier RD,
 1/2 North,
 East Into

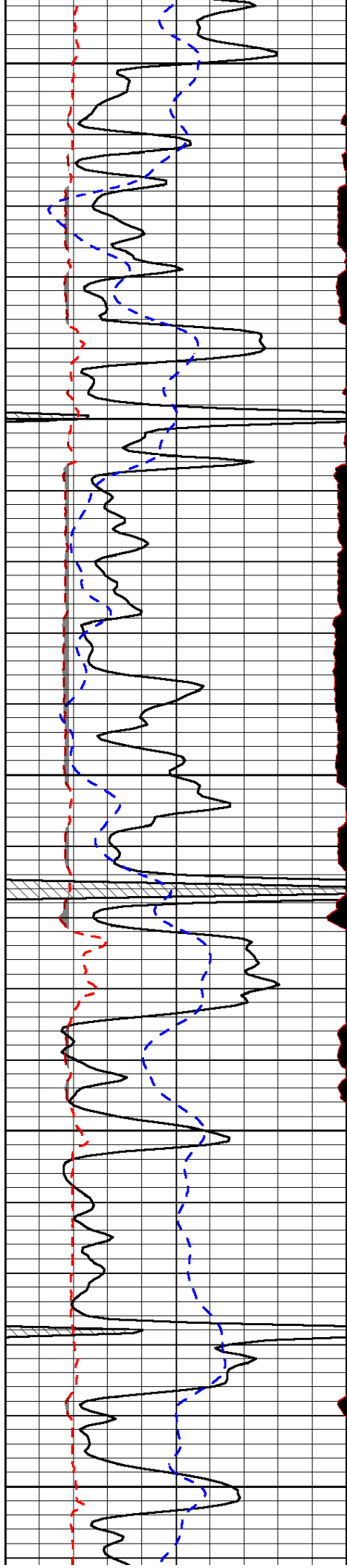
Database File: larsen_ehmke_fisher_1_19hd.db
 Dataset Pathname: dil/lastkml
 Presentation Format: micro
 Dataset Creation: Tue Dec 02 21:09:55 2014
 Charted by: Depth in Feet scaled 1:240

0	Gamma Ray	150
6	MCAL (GAPI)	16
2.875	Mud Cake (GAPI)	7.875
-200	SP (mV)	0

0	Micro Inverse 1 X 1	40
0	Micro Normal 2"	40
10000	Line Weight	0

LSPD





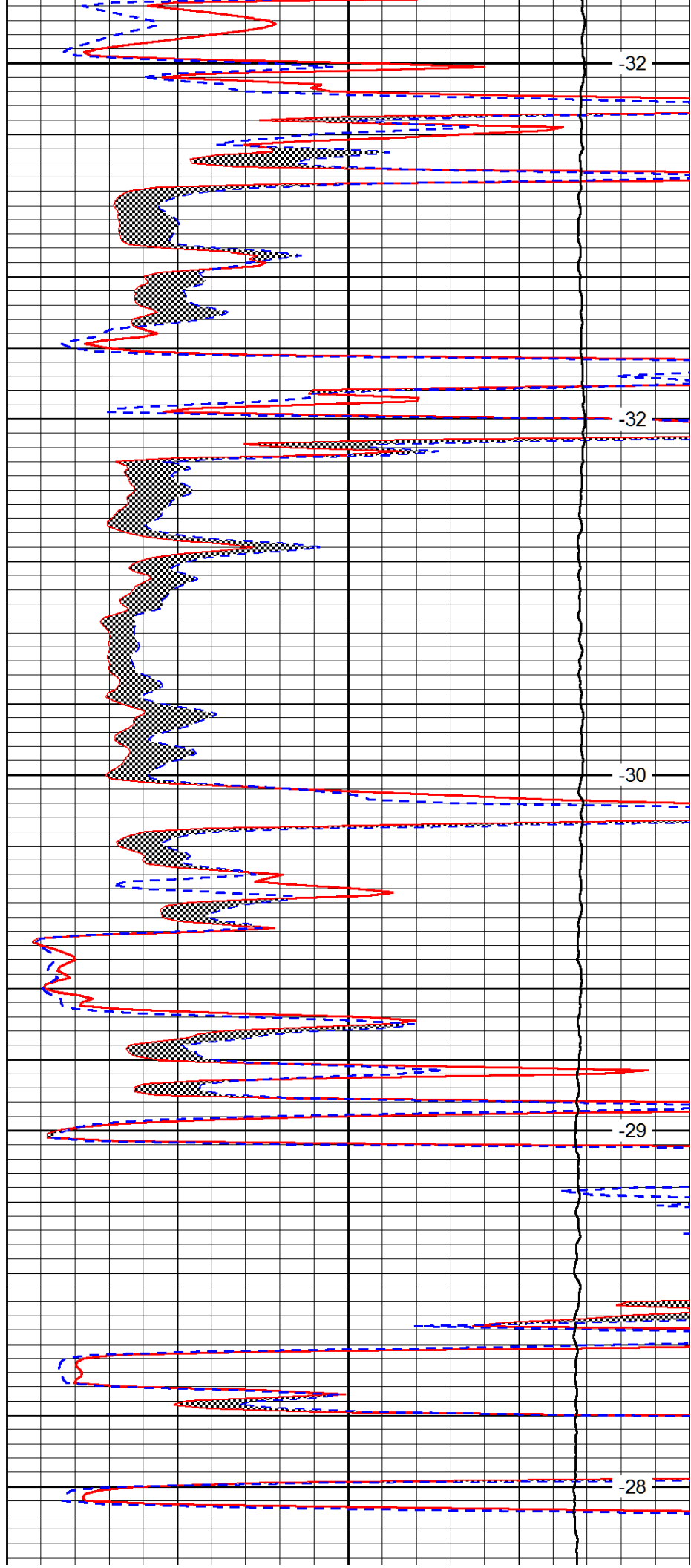
3800

3850

3900

3950

4000



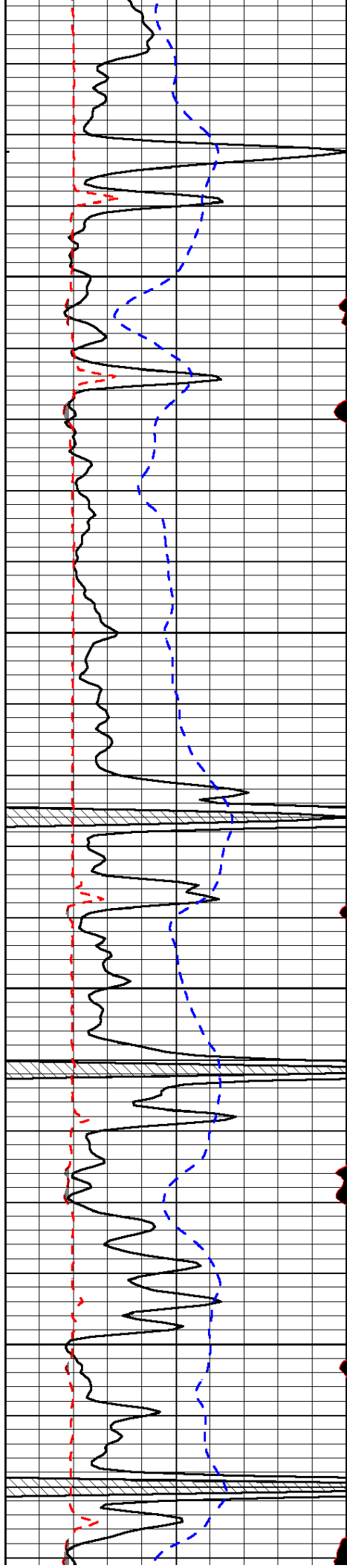
-32

-32

-30

-29

-28

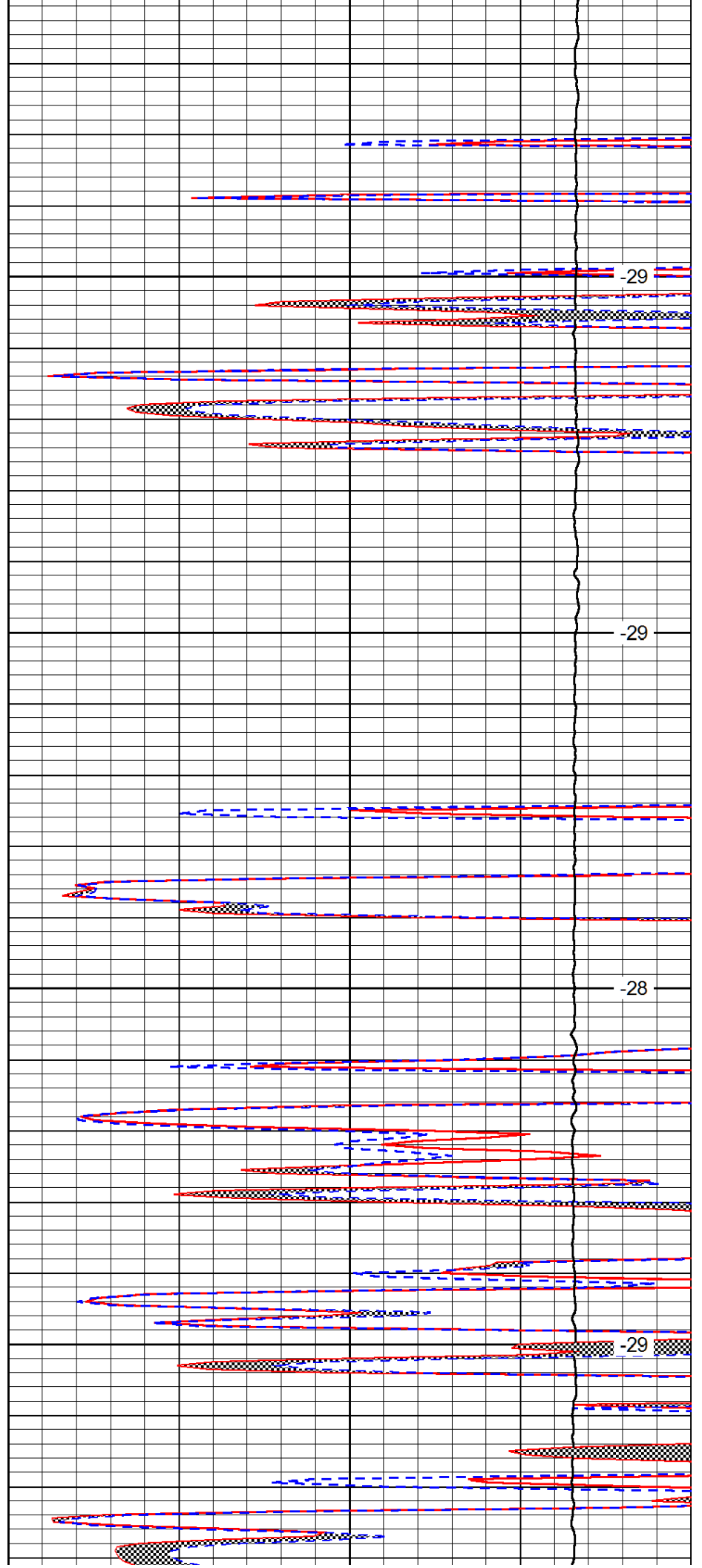


4050

4100

4150

4200

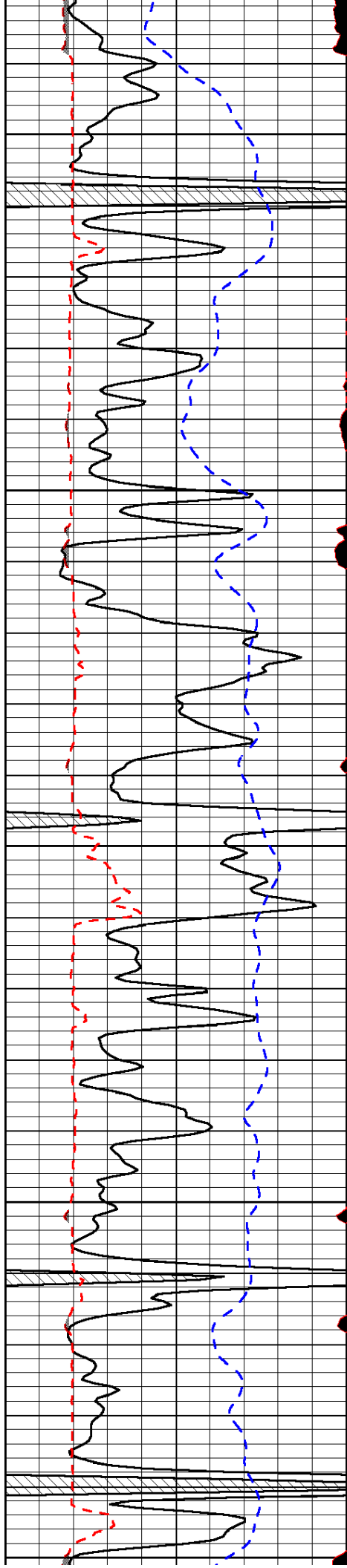


-29

-29

-28

-29



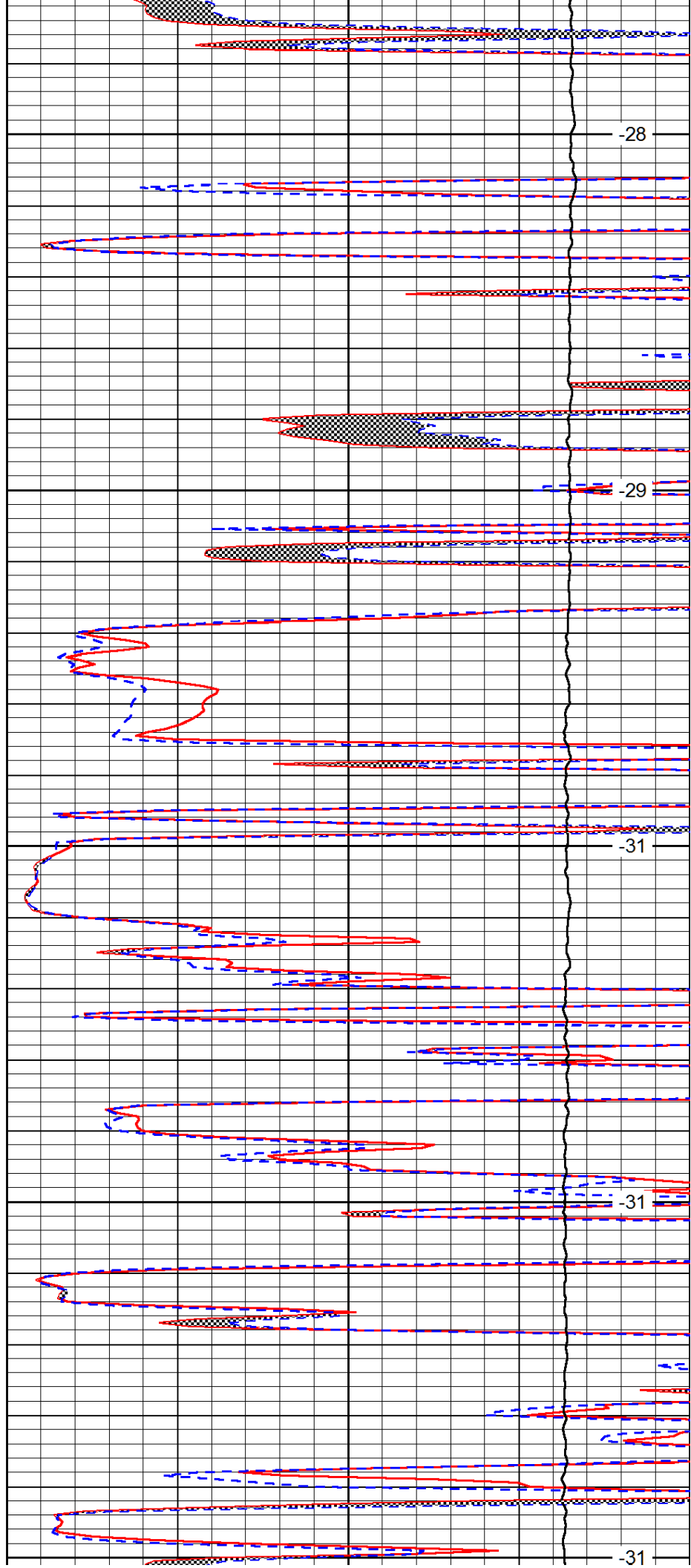
4250

4300

4350

4400

4450



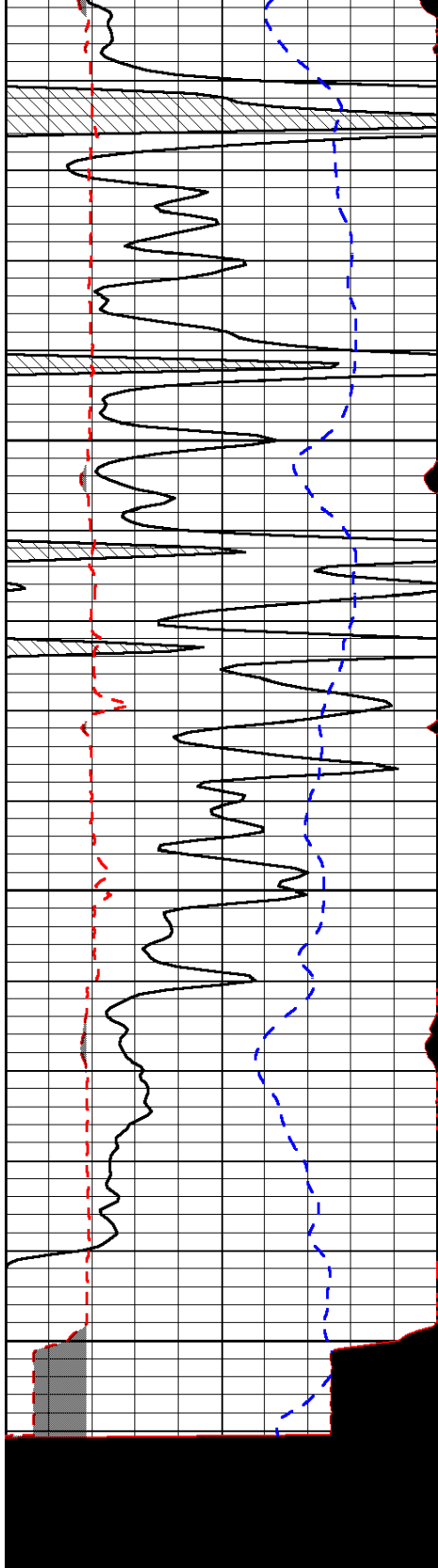
-28

-29

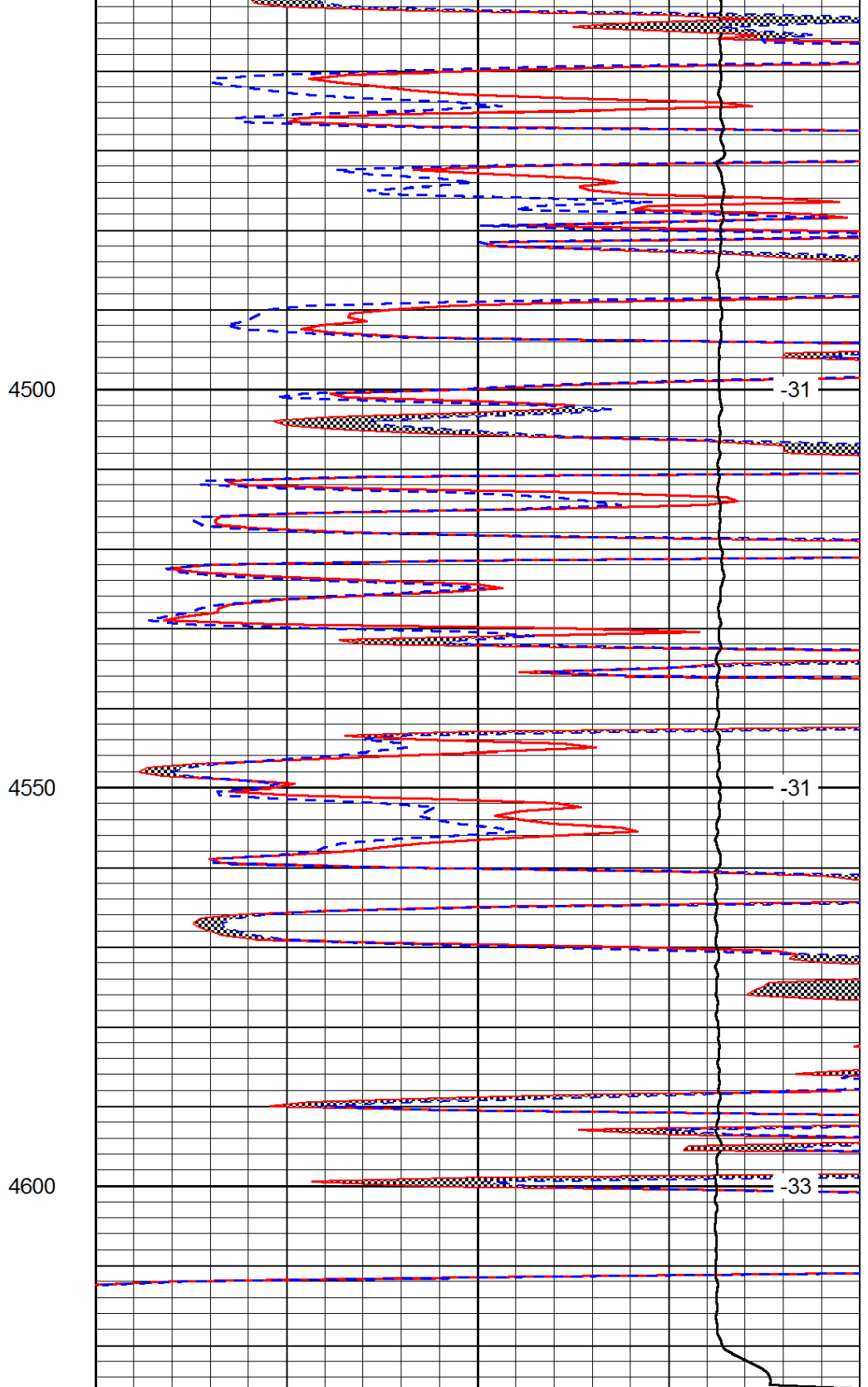
-31

-31

-31



0	Gamma Ray	150
6	MCAL (GAPI)	16
2.875	Mud Cake (GAPI)	7.875
-200	SP (mV)	0



0	Micro Inverse 1 X 1	40
0	Micro Normal 2''	40
10000	Line Weight	0
		LSPD