



Pioneer Energy Services

Microresistivity Log

API No.	15-023-21,416-00-00	
Company	Berexco, LLC.	
Well	Owens Trust #1-19	
Field	Wildcat	
County	Cheyenne	State
		Kansas
Location	660' FNL & 1830' FWL	
Sec: 19	Twp: 1S	Rge: 37W
Permanent Datum	Ground Level	Elevation 3170
Log Measured From	Kelly Bushing	13 Ft. Above Perm. Datum
Drilling Measured From	Kelly Bushing	K.B. 3183 D.F. 3170 G.L. 3170
Other Services	RAG	

Date	12/5/2014
Run Number	Two
Depth Driller	4750
Depth Logger	4746
Bottom Logged Interval	4745
Top Log Interval	3500
Casing Driller	8.625 @ 310
Casing Logger	309
Bit Size	7.875
Type Fluid in Hole	Chemical
Salinity, ppm CL	600
Density / Viscosity	9.4 52
pH / Fluid Loss	10.0 6.8
Source of Sample	Flowline
Rm @ Meas. Temp	0.90 @ 64
Rmf @ Meas. Temp	0.68 @ 64
Rmc @ Meas. Temp	1.22 @ 64
Source of Rmf / Rmc	Charts
Rm @ BHT	0.47 @ 124
Operating Rig Time	4 Hours
Max Rec. Temp. F	124
Equipment Number	15
Location	Hays
Recorded By	D.Kerr
Witnessed By	Pete Vollmer

<<< Fold Here >>>

All interpretations are opinions based on inferences from electrical or other measurements and we cannot and do not guarantee the accuracy or correctness of any interpretation, and we shall not, except in the case of gross or willful negligence on our part, be liable or responsible for any loss, costs, damages, or expenses incurred or sustained by anyone resulting from any interpretation made by any of our officers, agents or employees. These interpretations are also subject to our general terms and conditions set out in our current Price Schedule.

Comments

Thank you for using Log-Tech, Inc.
 (785) 625-3858

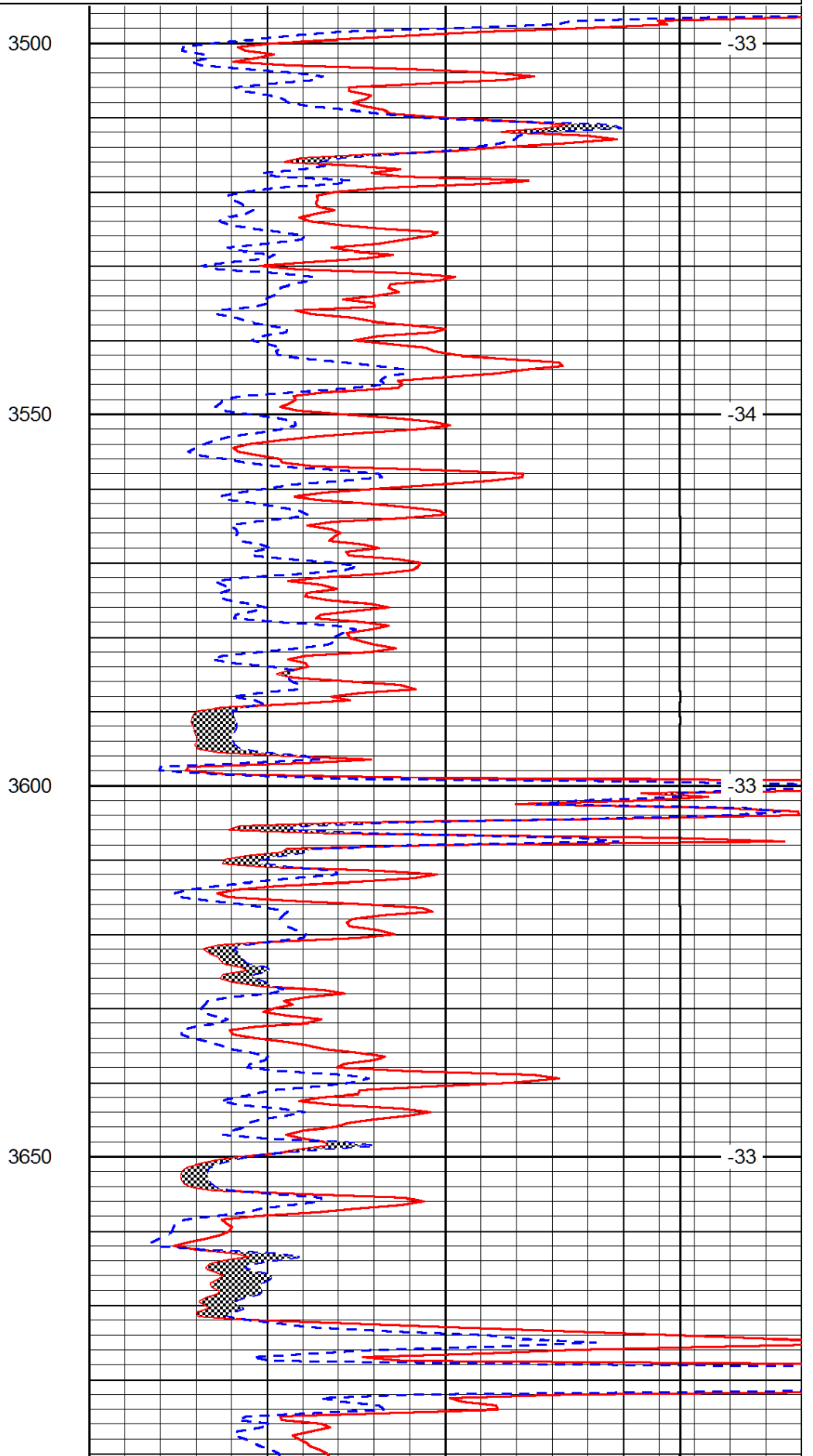
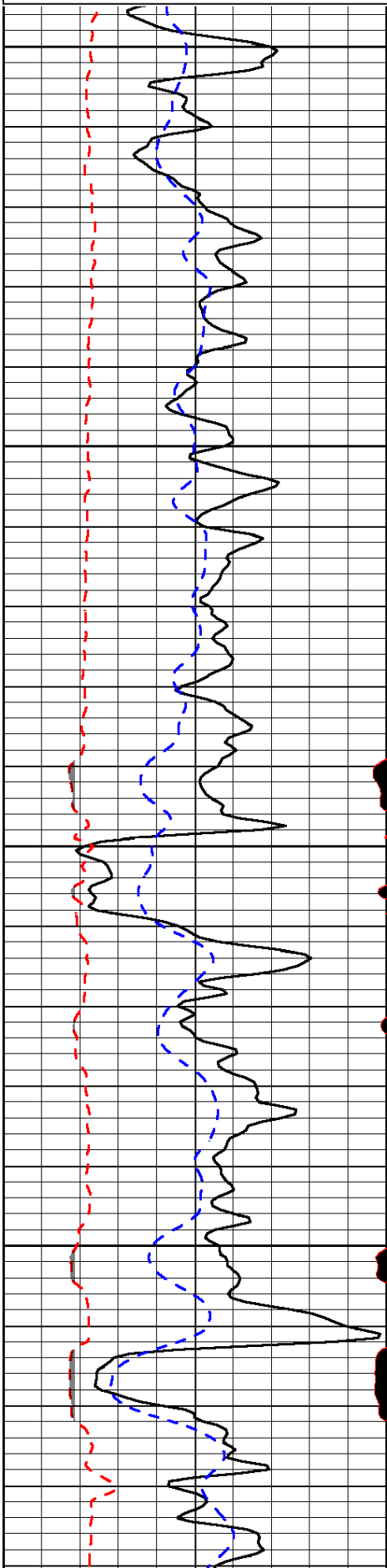
Bird City KS, North to AA RD,
 1 1/2 East to 30 RD, 1 1/2 North, West Into

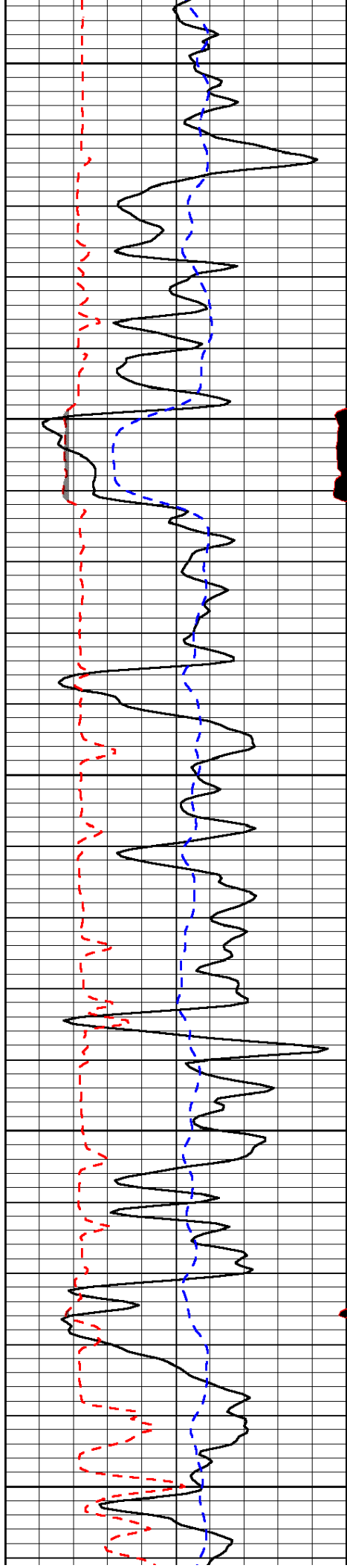
Database File: berexco_owens_1_19hd.db
 Dataset Pathname: rag/berxrag
 Presentation Format: micro
 Dataset Creation: Fri Dec 05 15:00:18 2014
 Charted by: Depth in Feet scaled 1:240

0	Gamma Ray	150
6	MCAL (GAPI)	16
2.875	Mud Cake (GAPI)	7.875
-200	SP (mV)	0

0	Micro Inverse 1 X 1	40
0	Micro Normal 2"	40
10000	Line Weight	0

LSPD





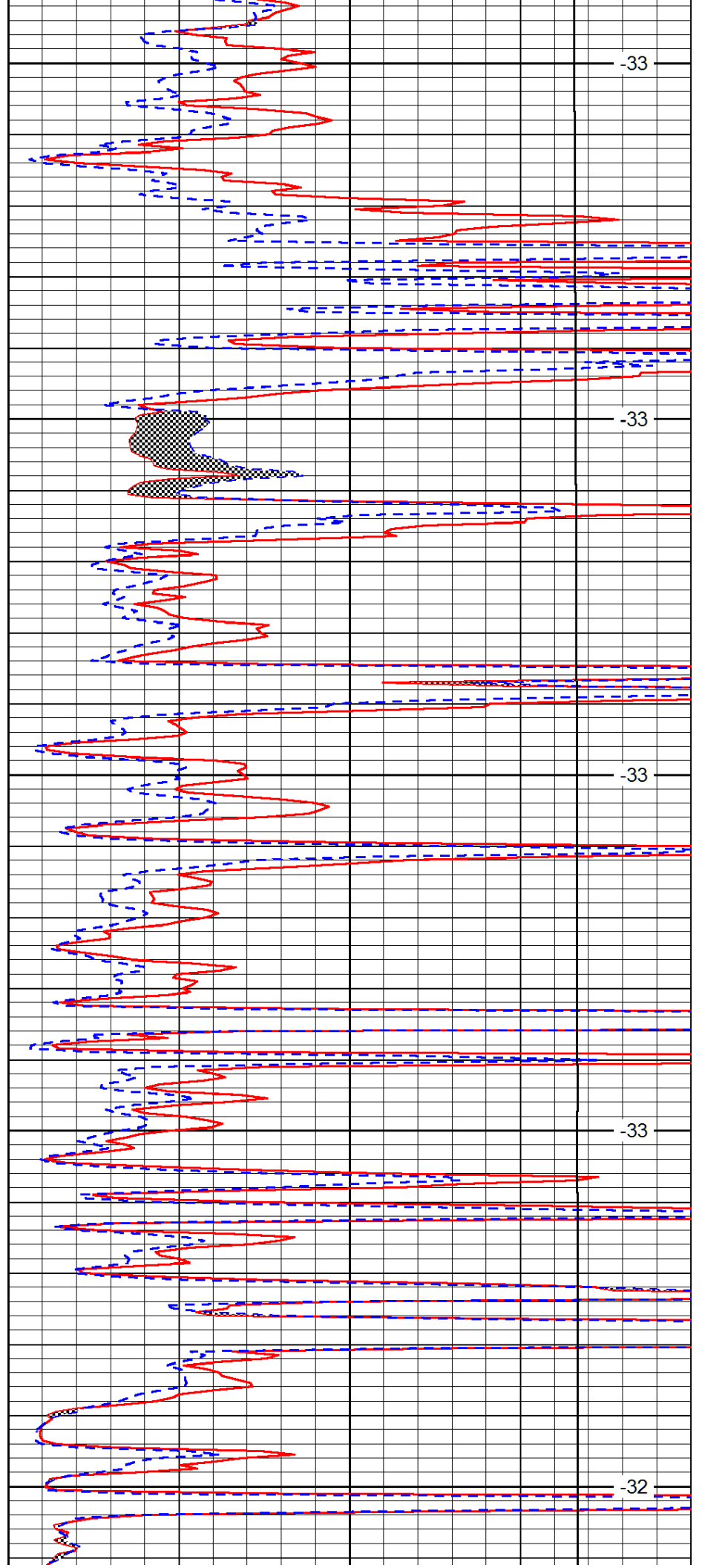
3700

3750

3800

3850

3900



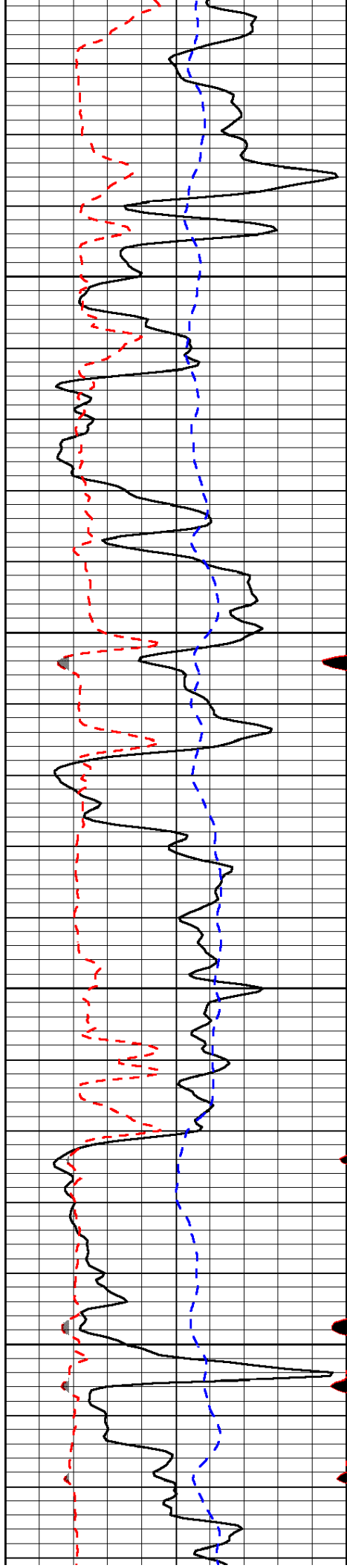
-33

-33

-33

-33

-32

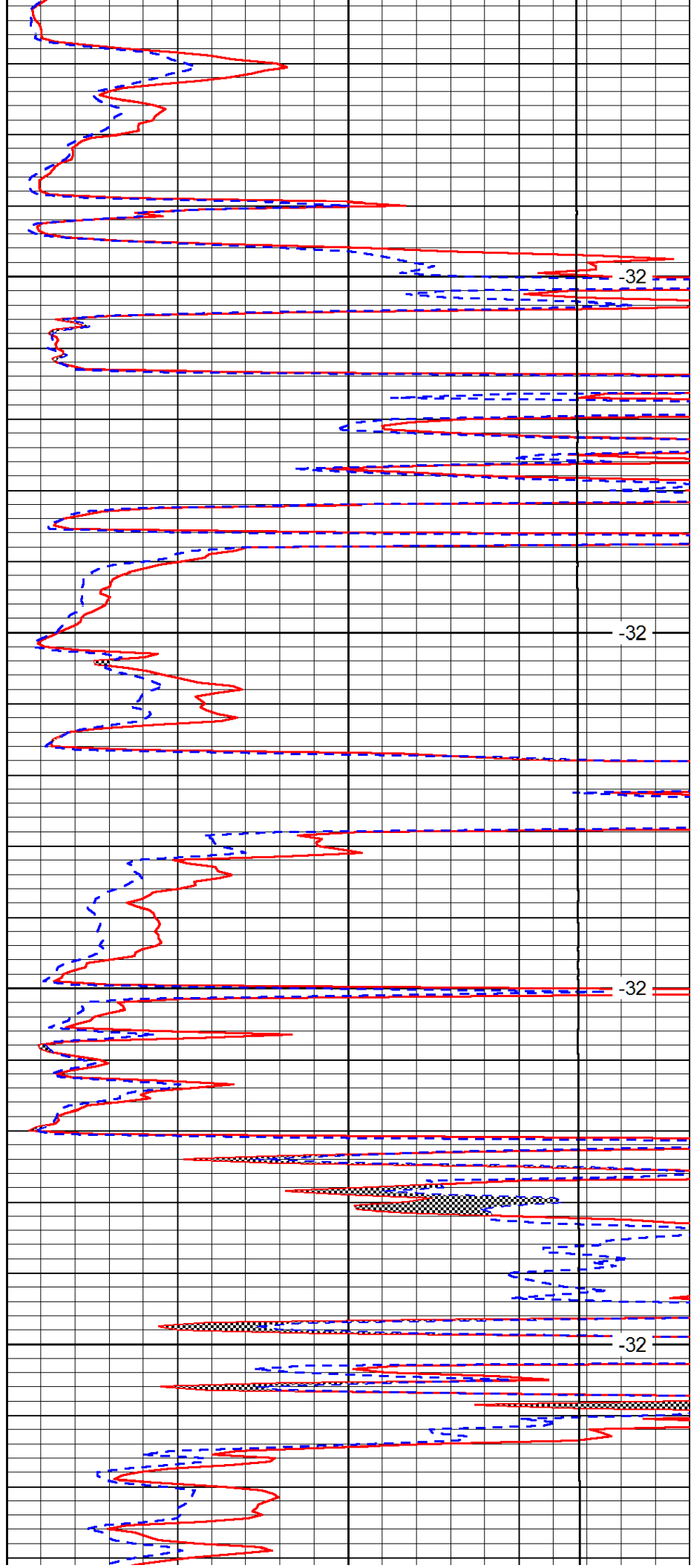


3950

4000

4050

4100

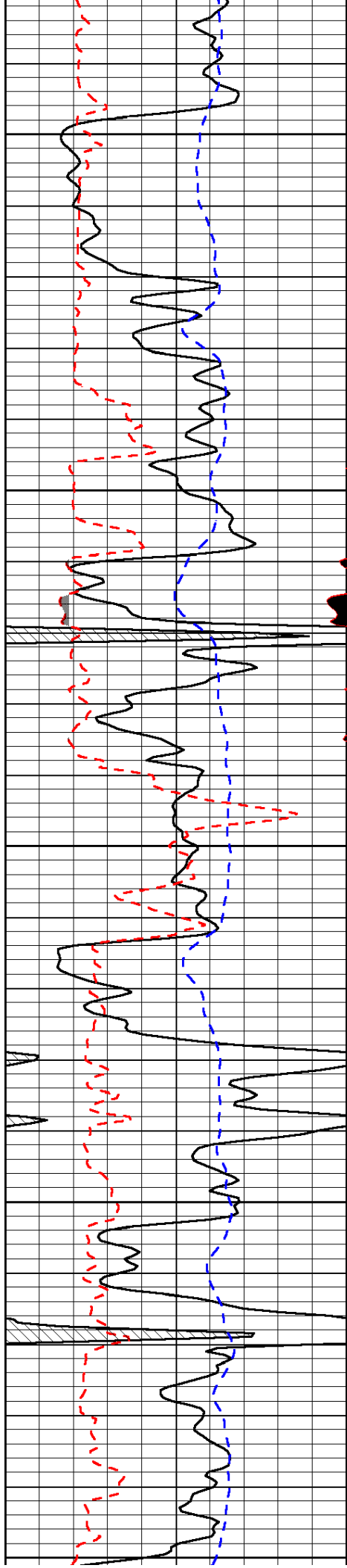


-32

-32

-32

-32



4150

-32

4200

-32

4250

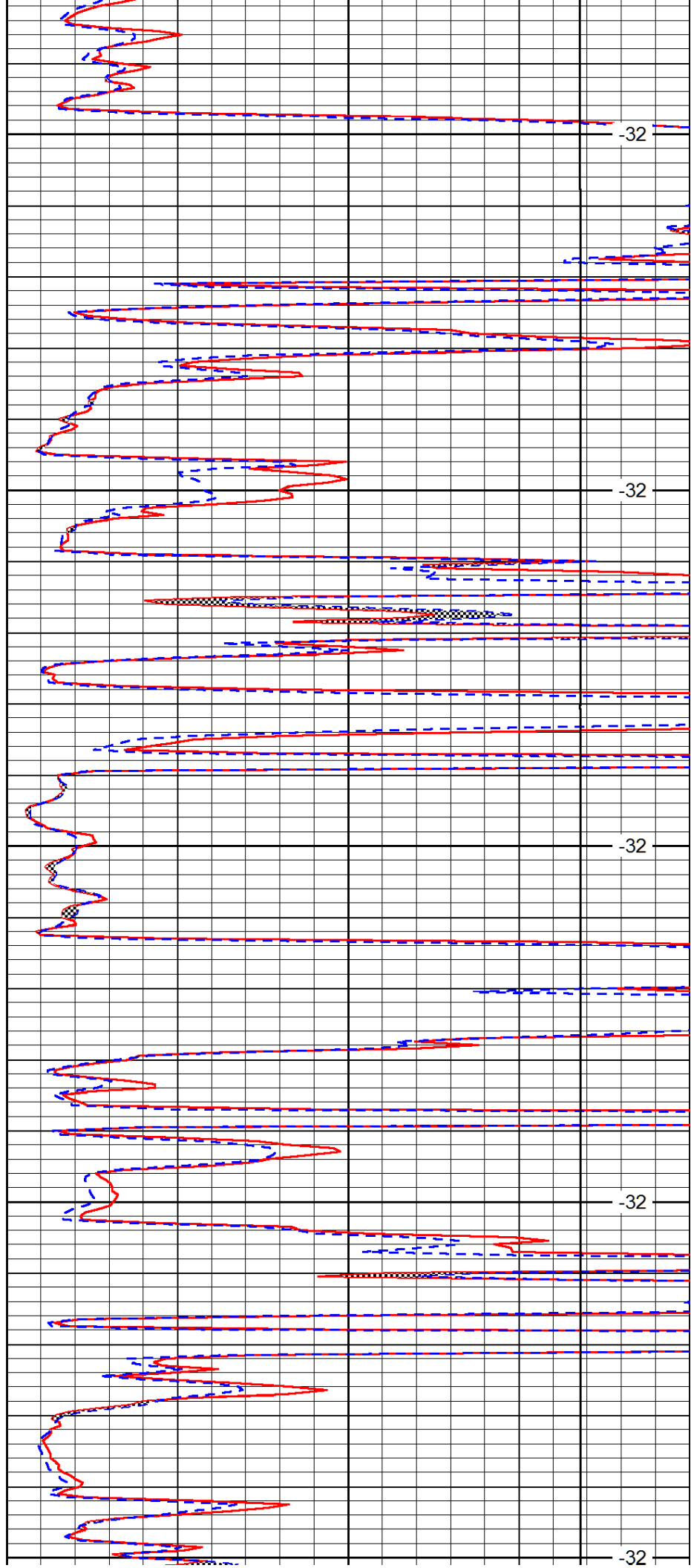
-32

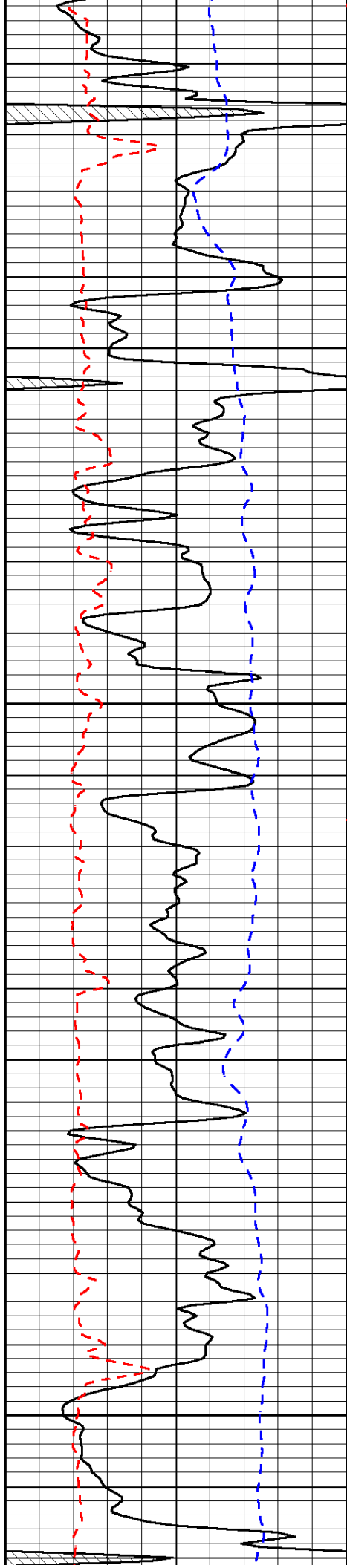
4300

-32

4350

-32



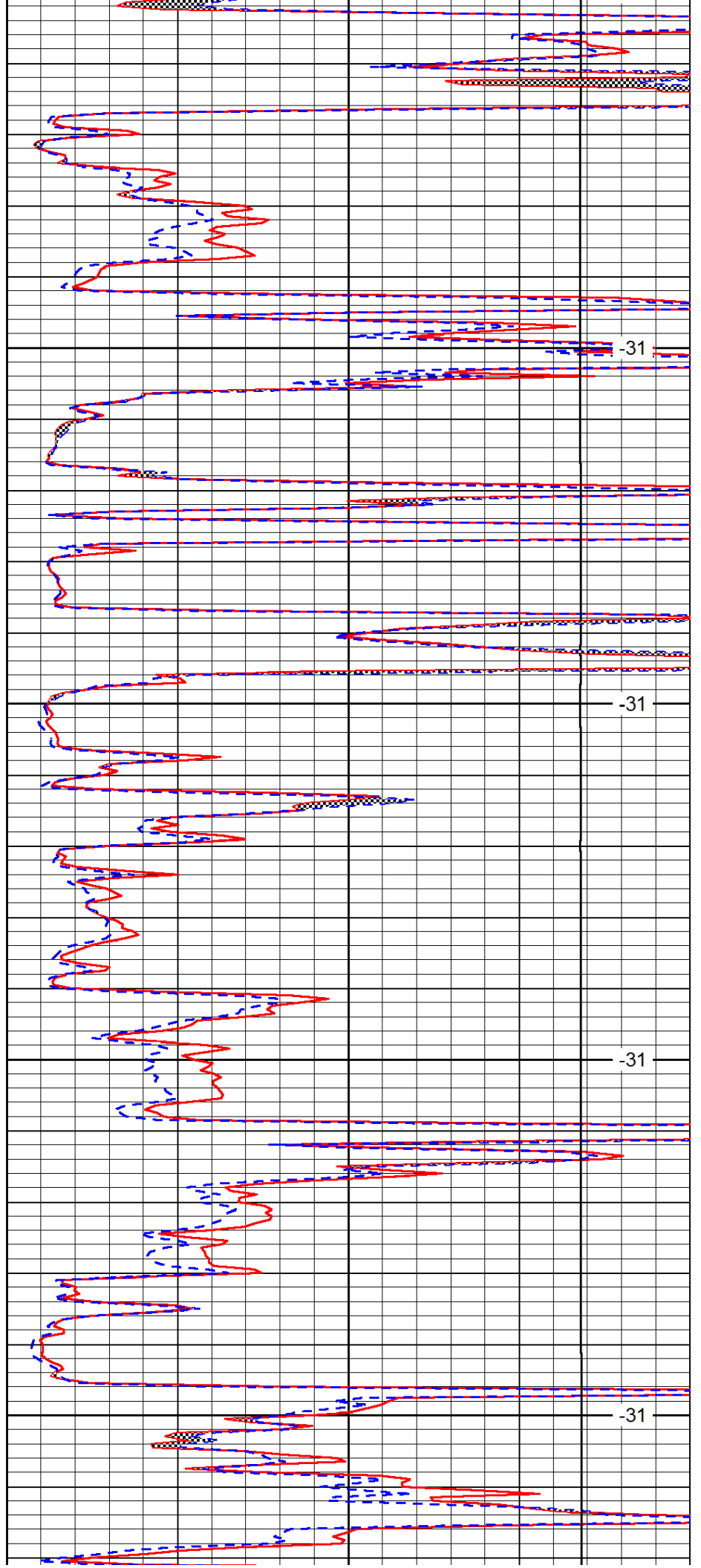


4400

4450

4500

4550

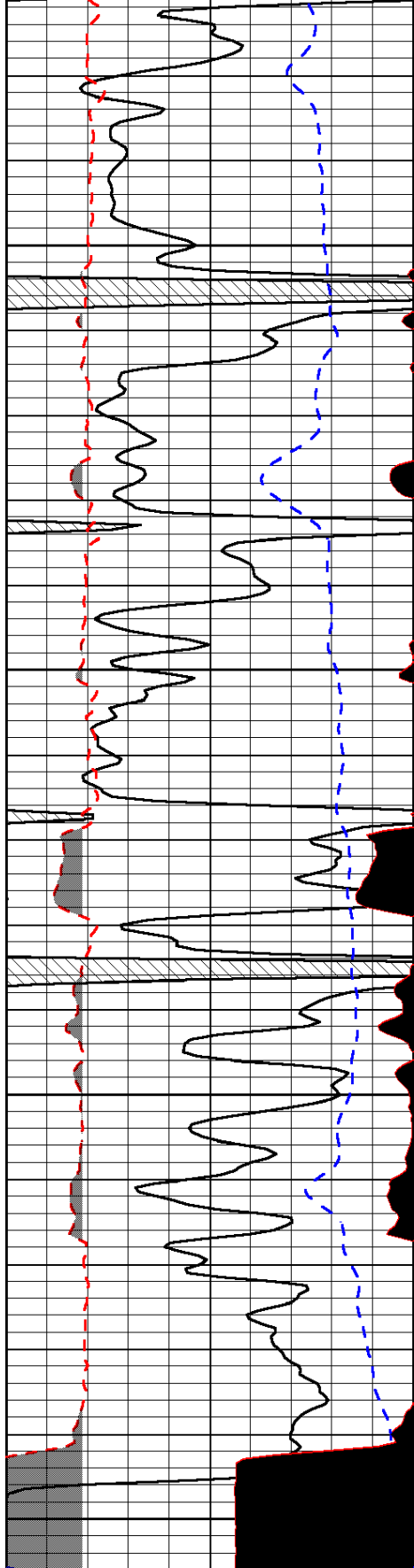


-31

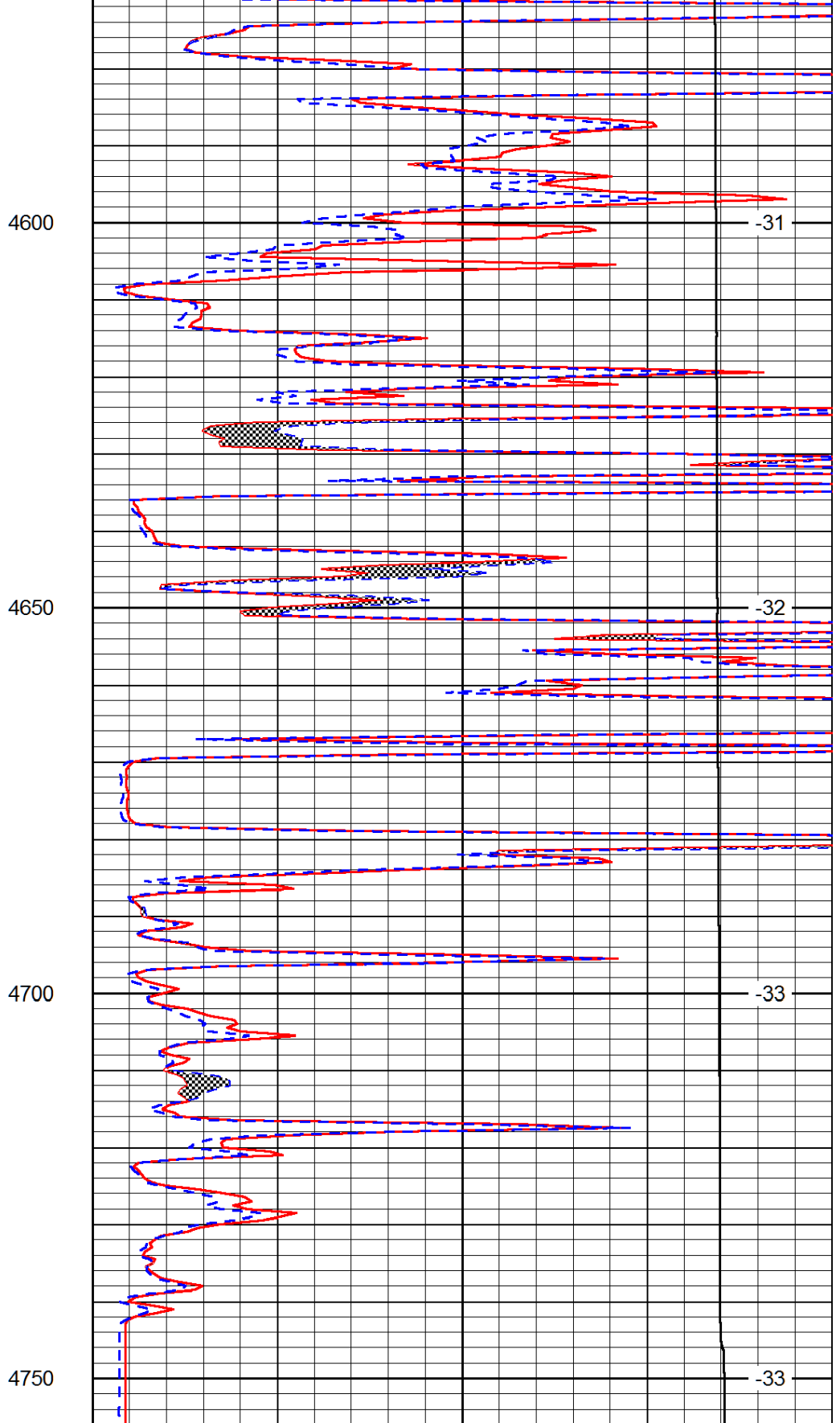
-31

-31

-31



0	Gamma Ray	150
6	MCAL (GAPI)	16
2.875	Mud Cake (GAPI)	7.875
-200	SP (mV)	0



0	Micro Inverse 1 X 1	40
0	Micro Normal 2"	40
10000	Line Weight	0

LSPD