

MICRO LOG

Company: DOWNING NELSON OIL CO. INC.
 Well: FABRIZIUS #2-2
 Field: CEDAR VIEW
 County: TREGO
 State: KANSAS
 Location: 1149 FILL & 1744 FEL
 AP# : 15-195-2301-0000
 Other Services: CD/CIL, DL/SON

Company: DOWNING NELSON OIL CO. INC.
 Well: FABRIZIUS #2-2
 Field: CEDAR VIEW
 County: TREGO
 State: KANSAS
 Location: 1149 FILL & 1744 FEL
 AP# : 15-195-2301-0000
 Other Services: CD/CIL, DL/SON

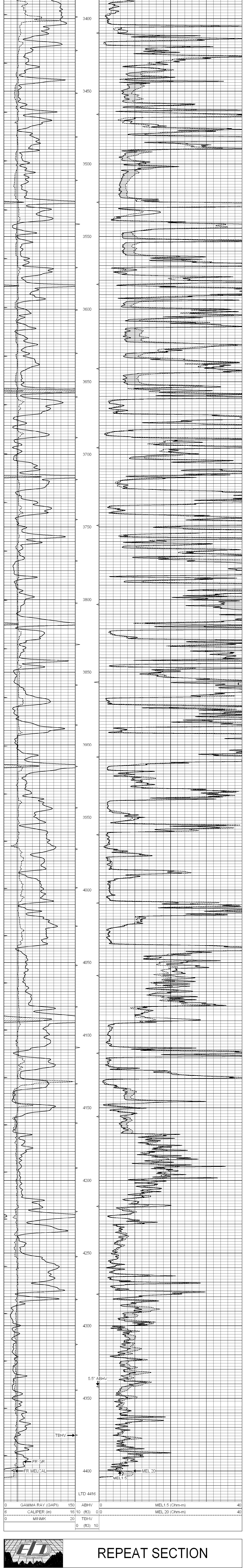
Date: 2/21/17
 Run Number: 4114
 Depth Logger: 4416
 Bottom Logged Interval: 4400
 Density / Viscosity: CHEMICAL MUD
 Type Fluid in Hole: CHLORIDES 12,000 PPM
 Bit Size: 7.75"
 Casing Logger: 4400
 Casing Depth: 222'
 Cement Logger: 222'
 Cement Depth: 222'
 Maximum Recorded Temperature: 120F
 Equipment Number: 9222399
 HWS: KANSAS
 JEFF LIEBBERG
 HNS: KANSAS
 JEFF LIEBBERG
 Location: HNS: KANSAS
 JEFF LIEBBERG
 Recorded By: MARC DOWNING

All interpretations are opinions based on inferences from electrical or other measurements and we cannot and do not guarantee the accuracy or correctness of any interpretation, and we shall not, except in the case of gross or willful negligence on our part, be liable or responsible for any loss, costs, damages, or expenses incurred or sustained by anyone resulting from any interpretation made by any of our officers, agents or employees. These interpretations are also subject to our general terms and conditions set out in our current Price Schedule.

THANK YOU FOR USING ELI WIRELINE HAYS, KANSAS (785) 628-6395
 DIRECTIONS
 SOUTH OF OGALLA TO CURVE 1/2 MILE EAST
 SOUTH INTO

MAIN SECTION

Database File: 1401ddn.db
 Dataset Pathname: pass6.2
 Presentation Format: micro
 Dataset Creation: Tue Feb 21 04:17:56 2017 by Calc SOC 120430
 Charted by: Depth in Feet scaled 1:240

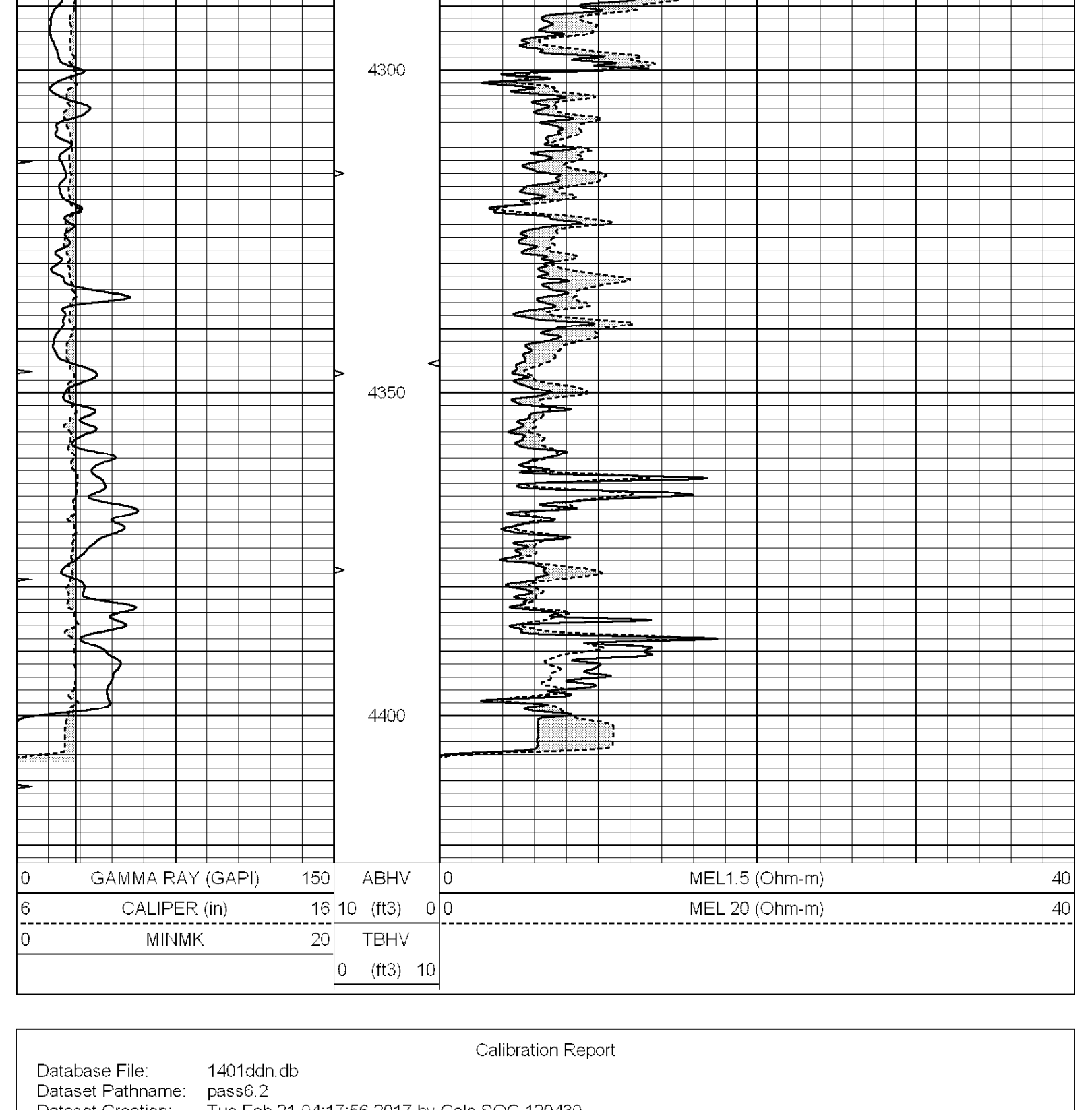


5.5" ABHV
 TBHV
 FR GR
 FR MELCAL
 MEL 20
 MEL 1.5
 LTD 4416

0 GAMMA RAY (GAPI) 150 ABHV 0 MEL 1.5 (Ohm-m) 40
 6 CALIPER (in) 16 (FR) 0 MEL 20 (Ohm-m) 40
 0 MINMK 20 TBHV 0 (FR) 10

REPEAT SECTION

Database File: 1401ddn.db
 Dataset Pathname: pass6.2
 Dataset Creation: Tue Feb 21 03:35:09 2017 by Calc SOC 120430
 Charted by: Depth in Feet scaled 1:240



0 GAMMA RAY (GAPI) 150 ABHV 0 MEL 1.5 (Ohm-m) 40
 6 CALIPER (in) 16 (FR) 0 MEL 20 (Ohm-m) 40
 0 MINMK 20 TBHV 0 (FR) 10

Calibration Report
 Database File: 1401ddn.db
 Dataset Pathname: pass6.2
 Dataset Creation: Tue Feb 21 04:17:56 2017 by Calc SOC 120430

MICRO Calibration Report
 Serial Number: 070912
 Tool Model: ProbeN
 Performed: Tue Dec 20 01:06:35 2016

Caliper Calibration: Gain=2.754 Offset=5.953
 References Readings: Low Cal 7.300 High Cal 15.000
 0.489 3.285

1.5" Calibration: Gain=42.000 Offset=0.000
 References Readings: Low Cal 0.000 High Cal 20.000
 0.002 1.239

2" Calibration: Gain=52.000 Offset=-0.200
 References Readings: Low Cal 0.000 High Cal 20.000
 0.003 1.075

Gamma Ray Calibration Report
 Serial Number: 110959
 Tool Model: OPEN_GR
 Performed: Tue Jan 17 01:44:11 2017

Calibrator Value: 1.0 GAPI
 Background Reading: 0.0 cps
 Calibrator Reading: 1.0 cps

Sensitivity: 0.2100 GAPI/cps