



SONIC LOG

Company I. A. OPERATING, INC.
Well TEEL #7-1
Field WILDCAT
County GRAHAM
State KANSAS

Company I. A. OPERATING, INC.
Well TEEL #7-1
Field WILDCAT
County GRAHAM State KANSAS

Location: API # : 15-065-24124-0000
1978' FNL & 2310' FEL
S/2 - NW - SW - NE
SEC 7 TWP 6S RGE 25W
Permanent Datum GROUND LEVEL Elevation 2518
Log Measured From KELLY BUSHING 8' A.G.L.
Drilling Measured From KELLY BUSHING
Other Services
CDL/CNL
DIL/MEL
Elevation
K.B. 2526
D.F. 2524
G.L. 2518

Date	12/6/16		
Run Number	TWO		
Depth Driller	3849		
Depth Logger	3852		
Bottom Logged Interval	3844		
Top Log Interval	300		
Casing Driller	8 5/8"@306'		
Casing Logger	306		
Bit Size	7 7/8"		
Type Fluid in Hole	CHEMICAL MUD	CHLORIDES 1,200 PPM	
Density / Viscosity	9.25/1		
pH / Fluid Loss	11.0/6.8		
Source of Sample	FLOWLINE		
Rin @ Meas. Temp	1.10@70F		
Rmf @ Meas. Temp	.825@70F		
Rmc @ Meas. Temp	1.32@70F		
Source of Rmf / Rmc	MEASUREMENT		
Rin @ BHT	.670@115F		
Time Circulation Stopped	3.5 HOURS		
Time Logger on Bottom	1:30 A.M.		
Maximum Recorded Temperature	115F		
Equipment Number	922339		
Location	HAYS, KANSAS		
Recorded By	JEFF LUEBBERS		
Witnessed By	JEFF LAWLER		

<<< Fold Here >>>

All interpretations are opinions based on inferences from electrical or other measurements and we cannot and do not guarantee the accuracy or correctness of any interpretation, and we shall not, except in the case of gross or willful negligence on our part, be liable or responsible for any loss, costs, damages, or expenses incurred or sustained by anyone resulting from any interpretation made by any of our officers, agents or employees. These interpretations are also subject to our general terms and conditions set out in our current Price Schedule.

Comments

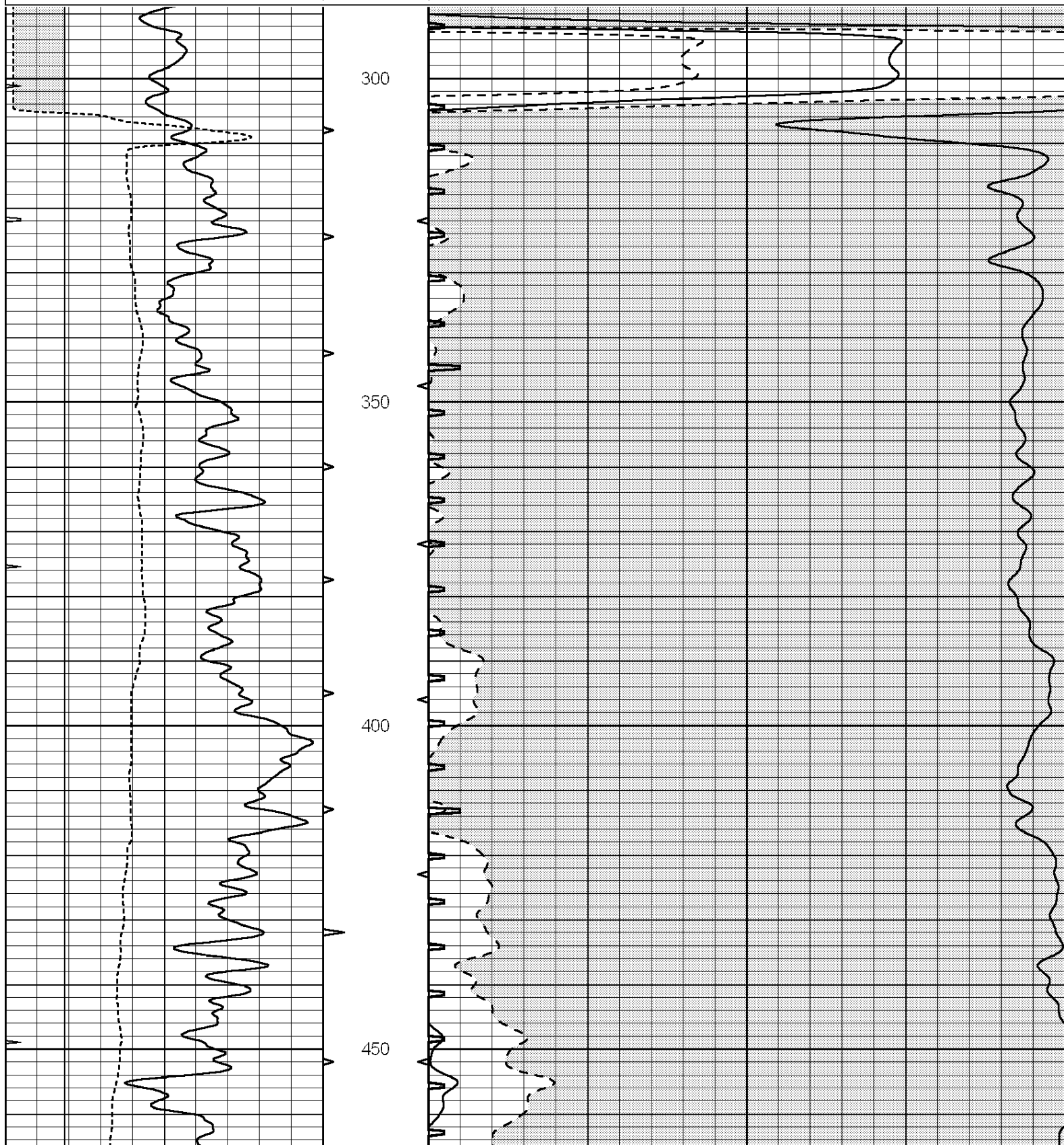
THANK YOU FOR USING ELI WIRELINE HAYS, KANSAS (785) 628-6395
DIRECTIONS
STUDLEY, KS., E. SIDE (HWY 24 & RD. 100), 13 1/2N., E. INTO ACROSS FROM FARM

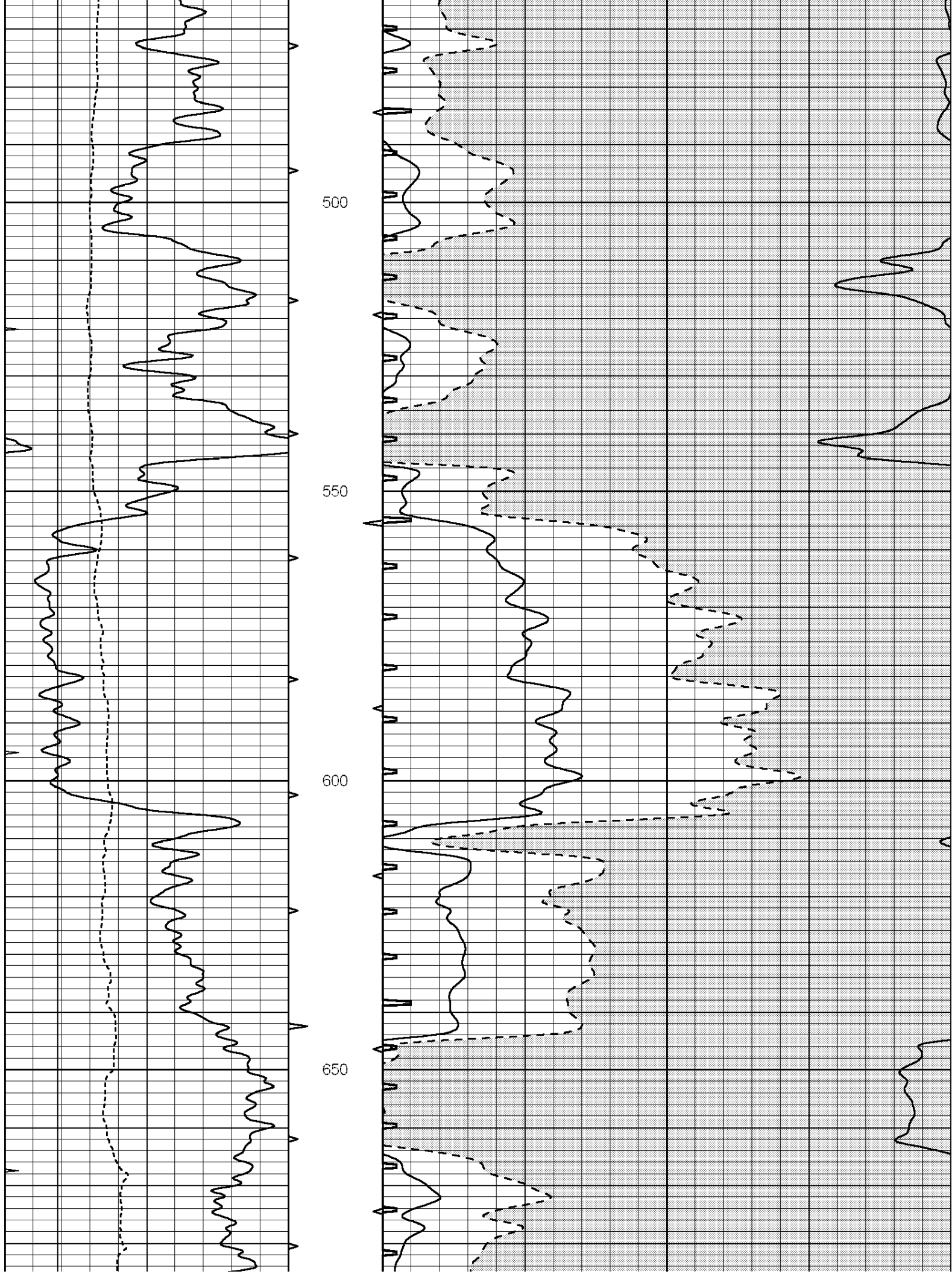


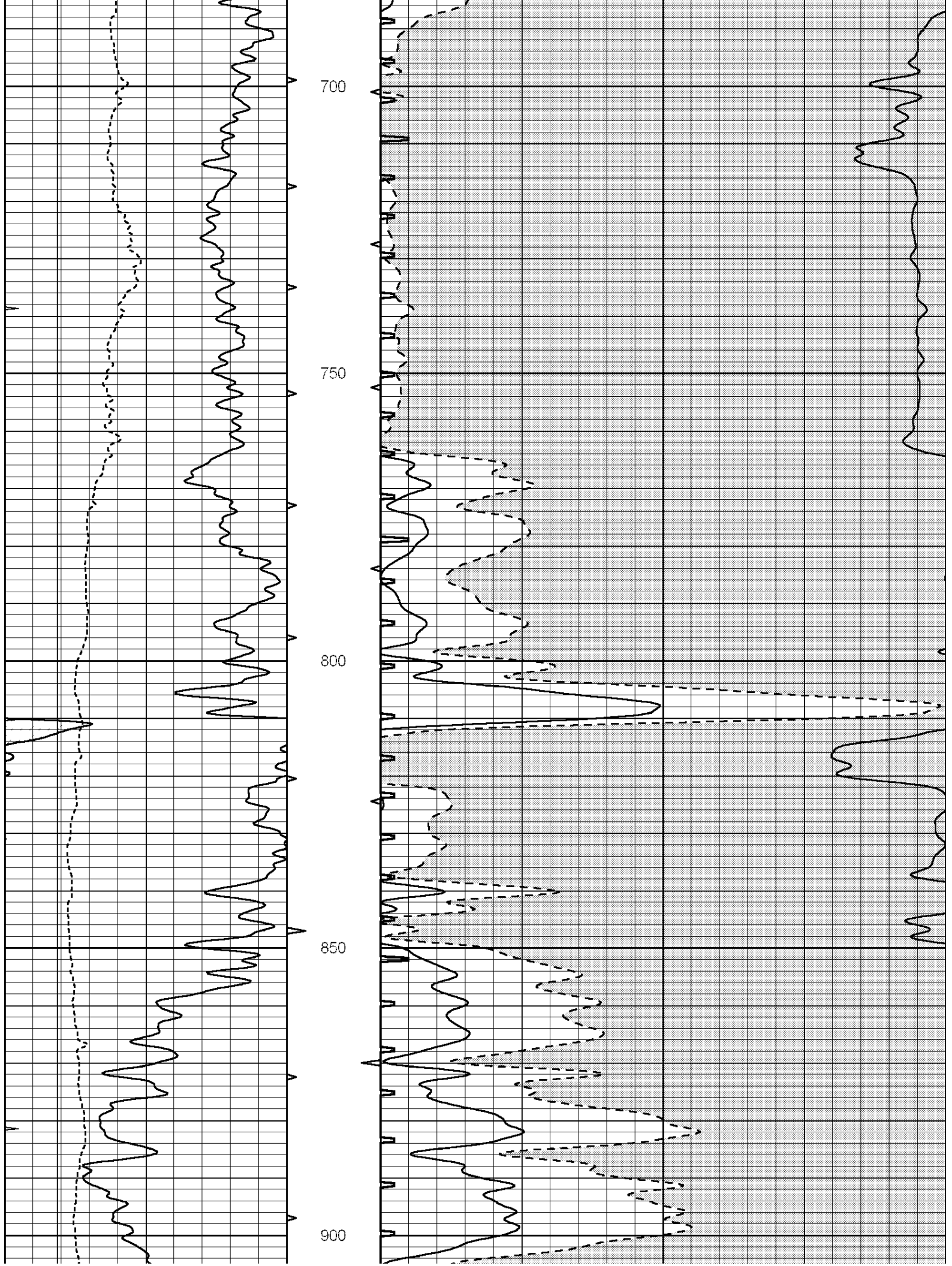
MAIN SECTION

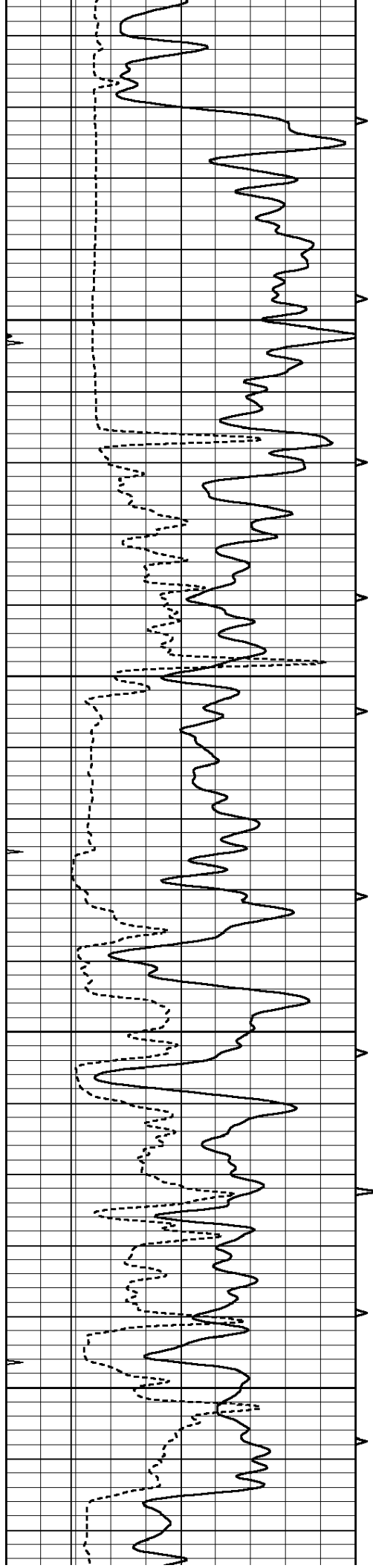
Database File: 1332ddn.db
 Dataset Pathname: pass6.3
 Presentation Format: slt
 Dataset Creation: Tue Dec 06 05:12:08 2016 by Calc SOC 120430
 Charted by: Depth in Feet scaled 1:240

0	GAMMA RAY (GAPI)	150	ABHV	140	DELTA TIME (usec/ft)	40
6	CALIPER (in)	16	10 (ft3)	0	30	SONIC POROSITY (pu)
0	MINMK	20	TBHV	0	ITT (msec)	20
			0 (ft3)	10		







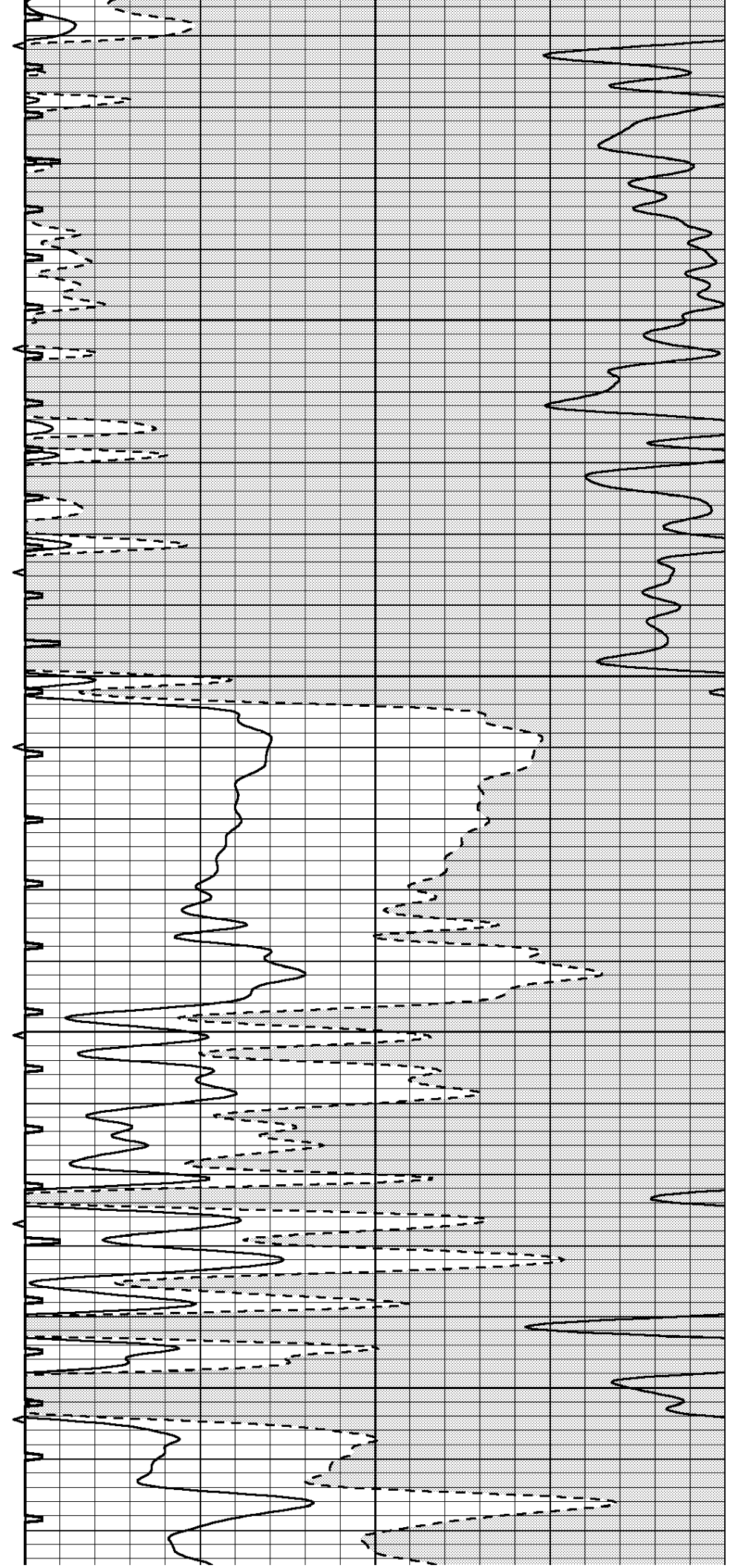


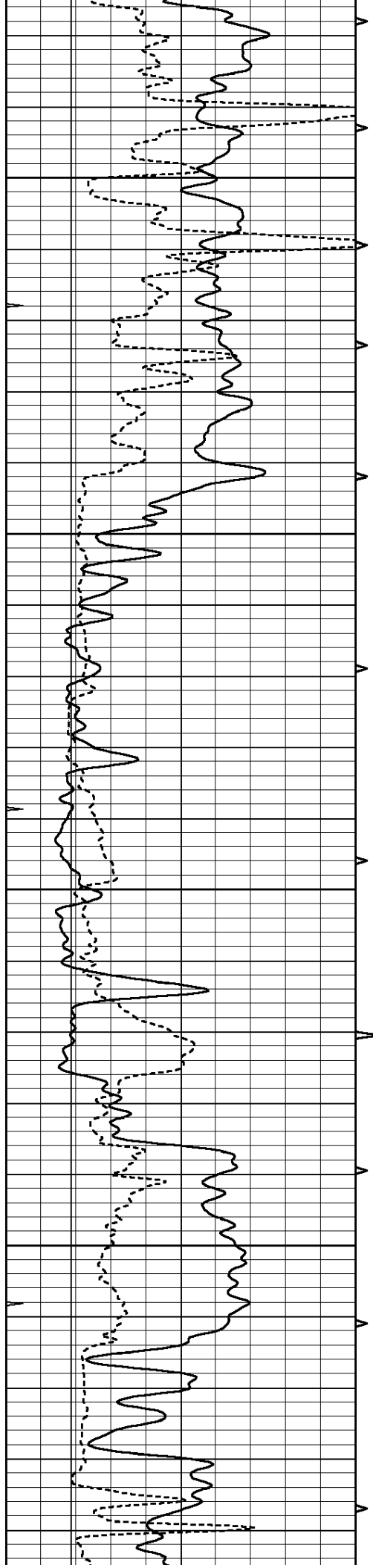
950

1000

1050

1100



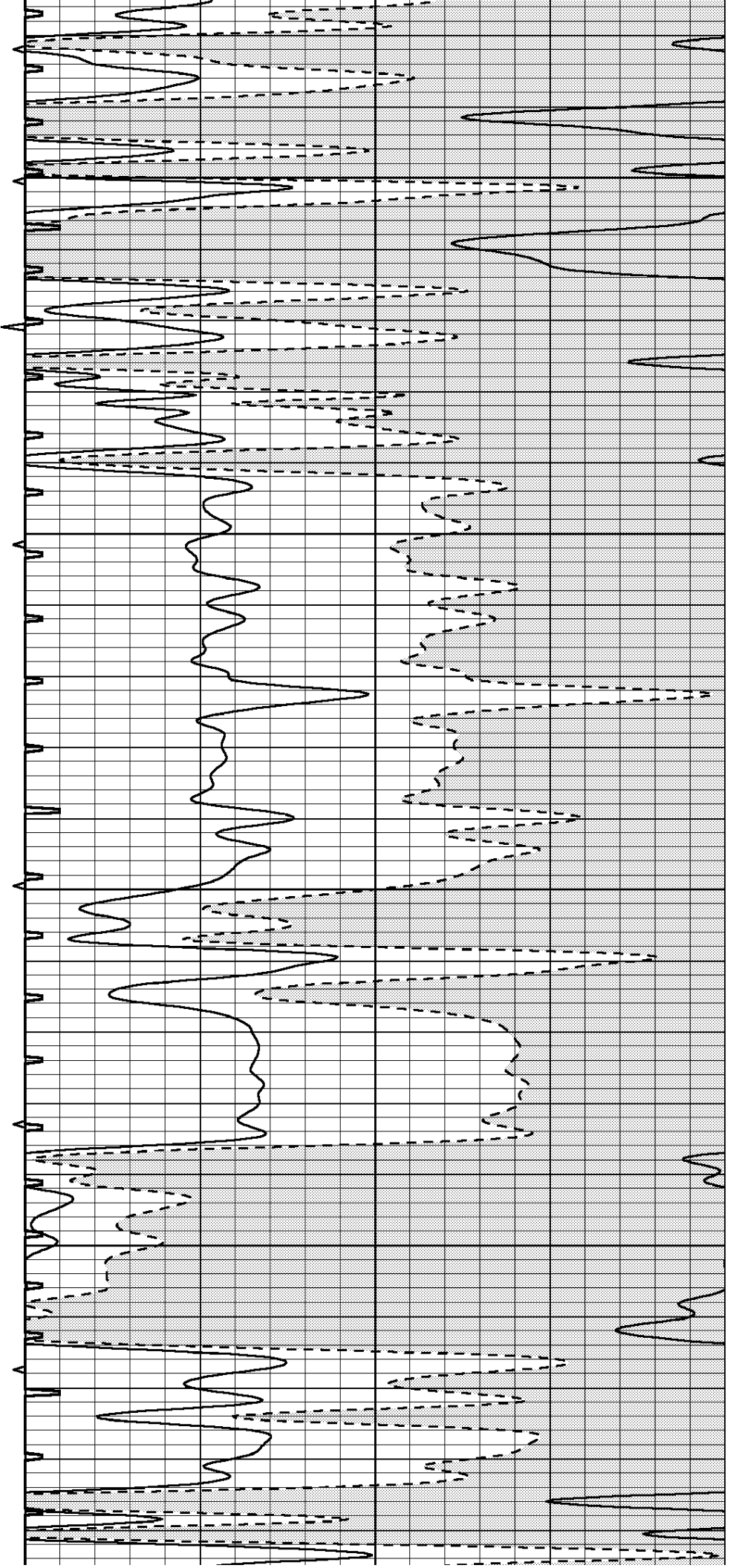


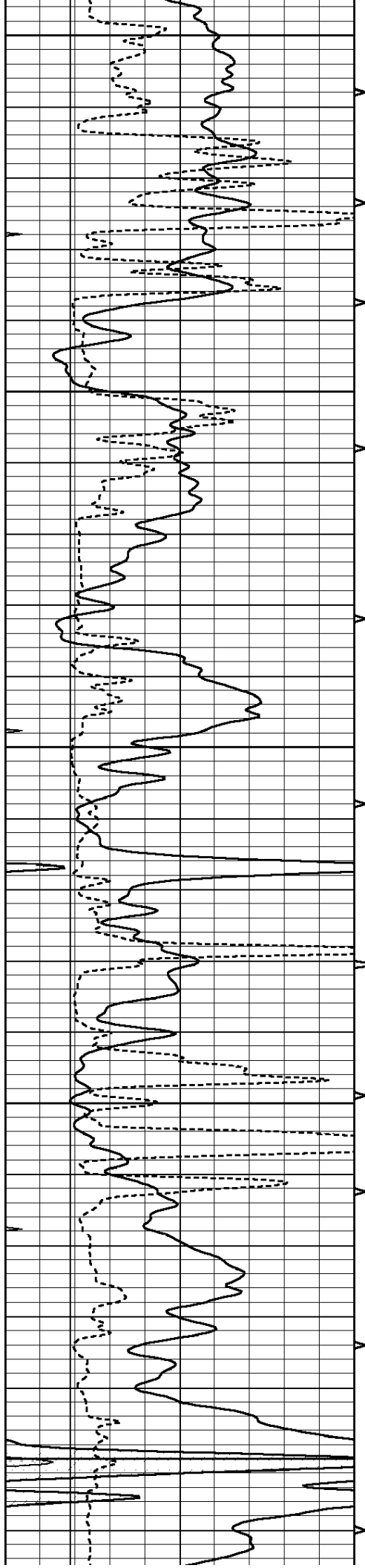
1150

1200

1250

1300





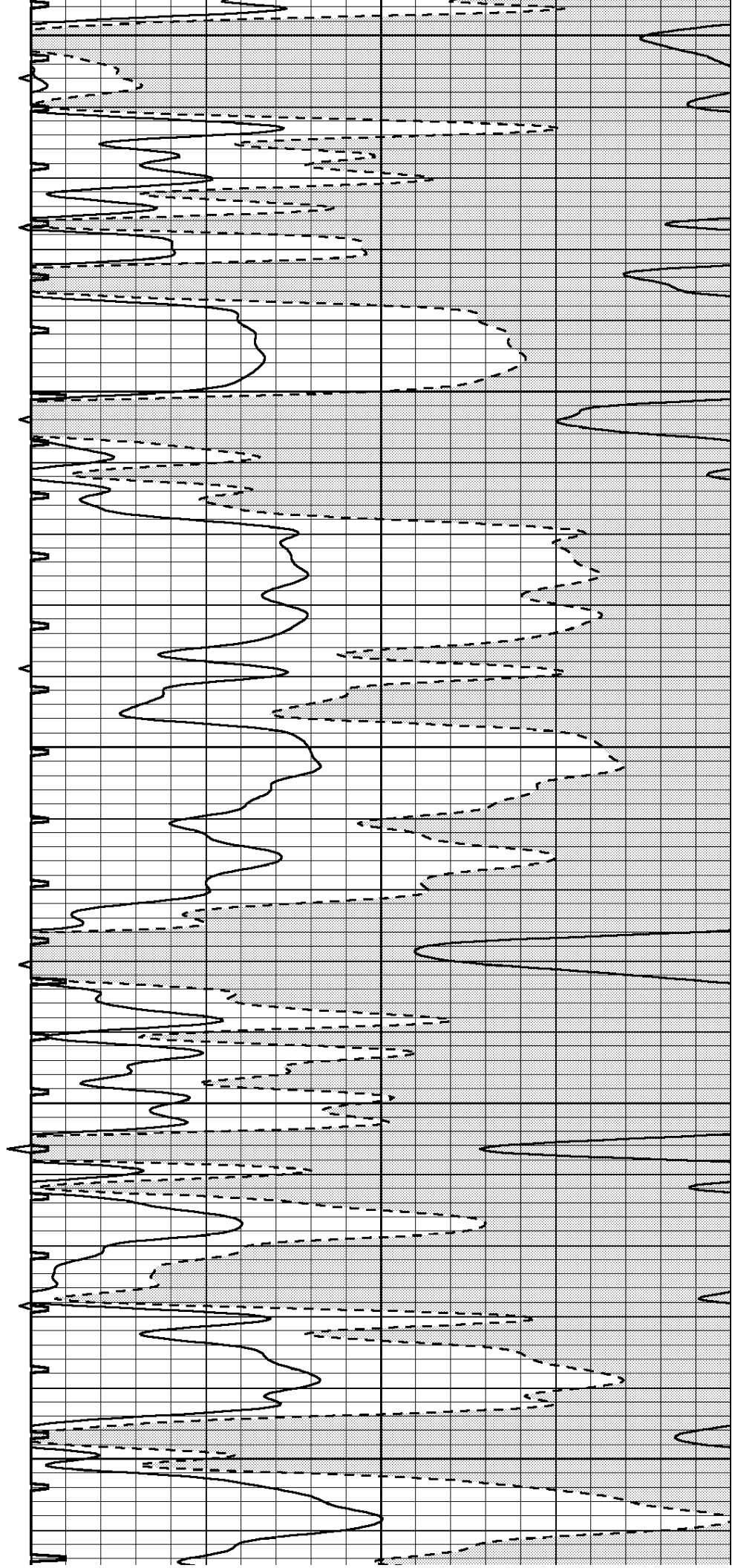
1350

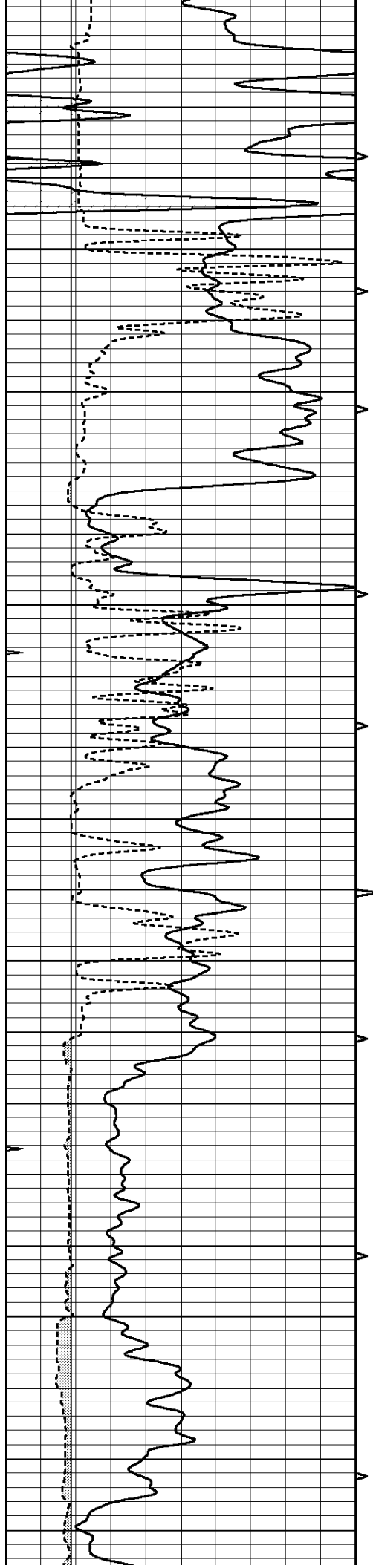
1400

1450

1500

1550



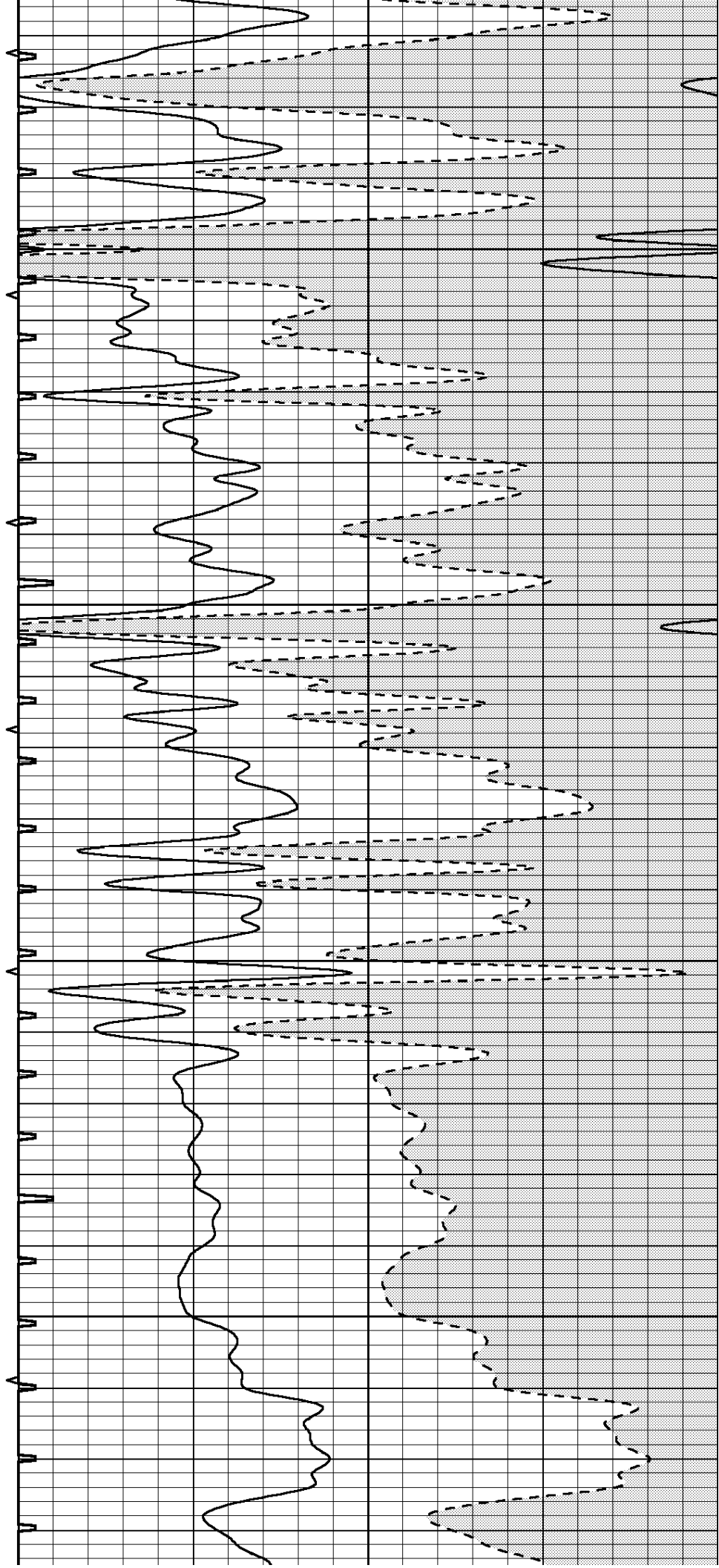


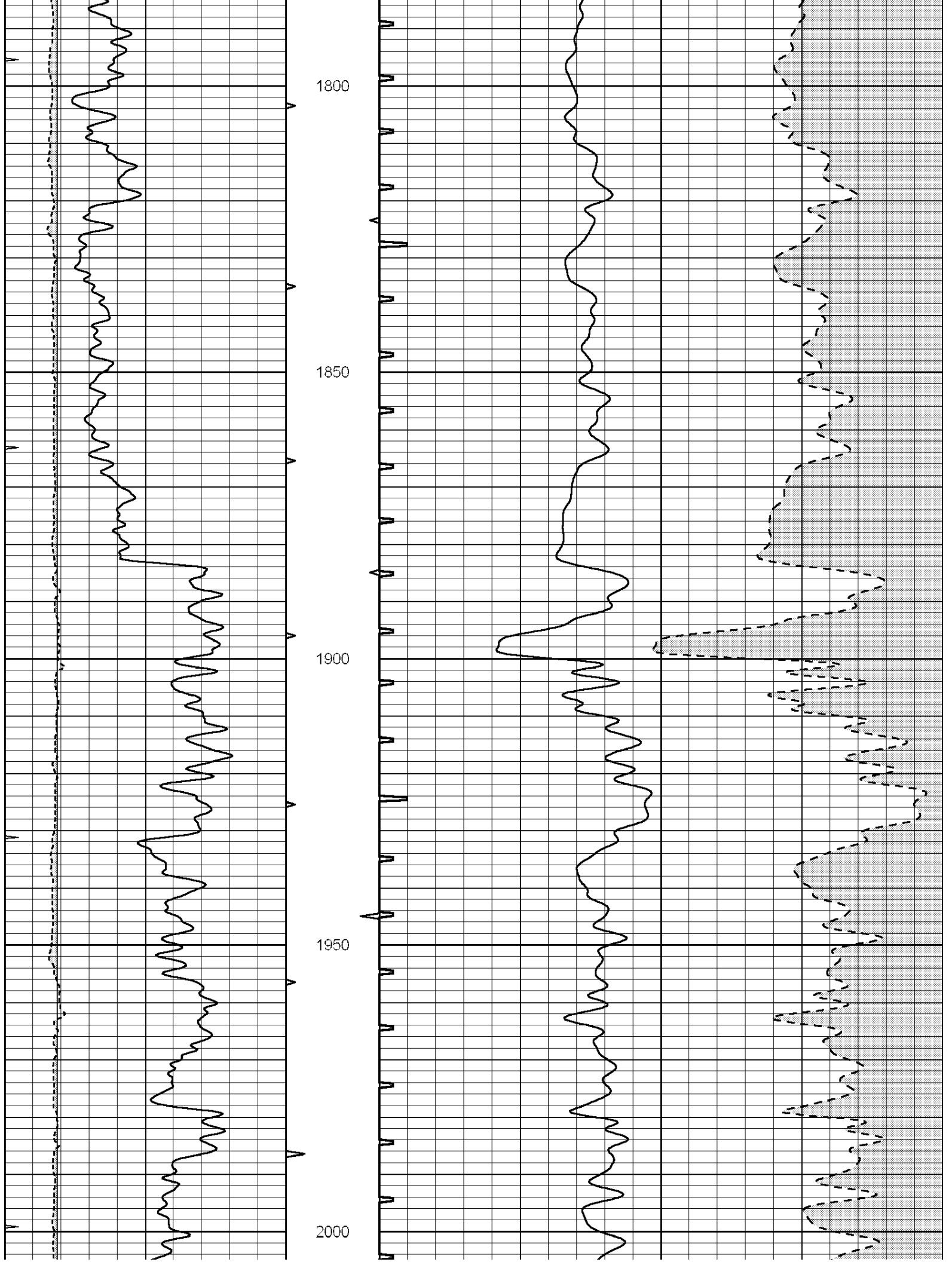
1600

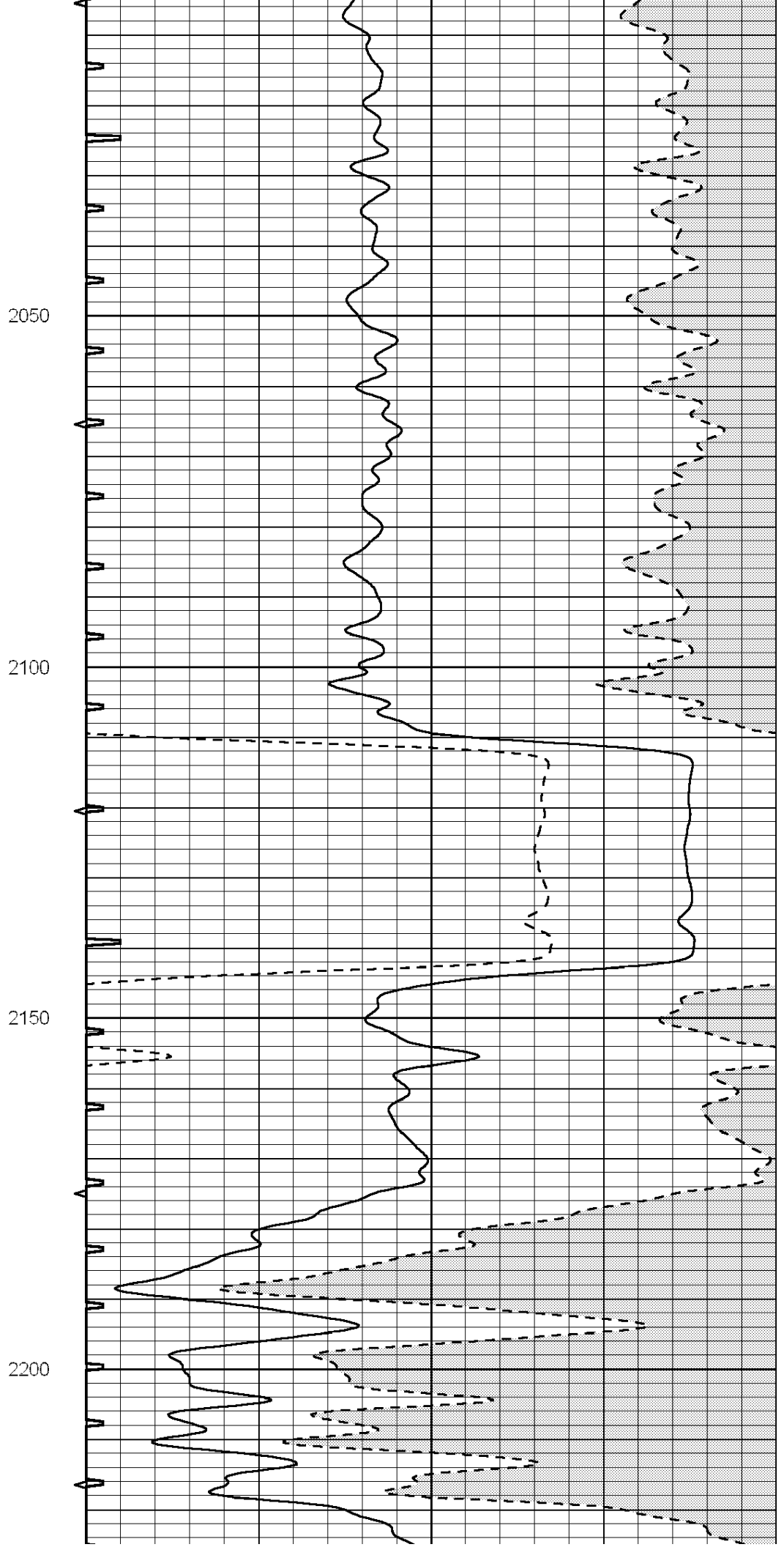
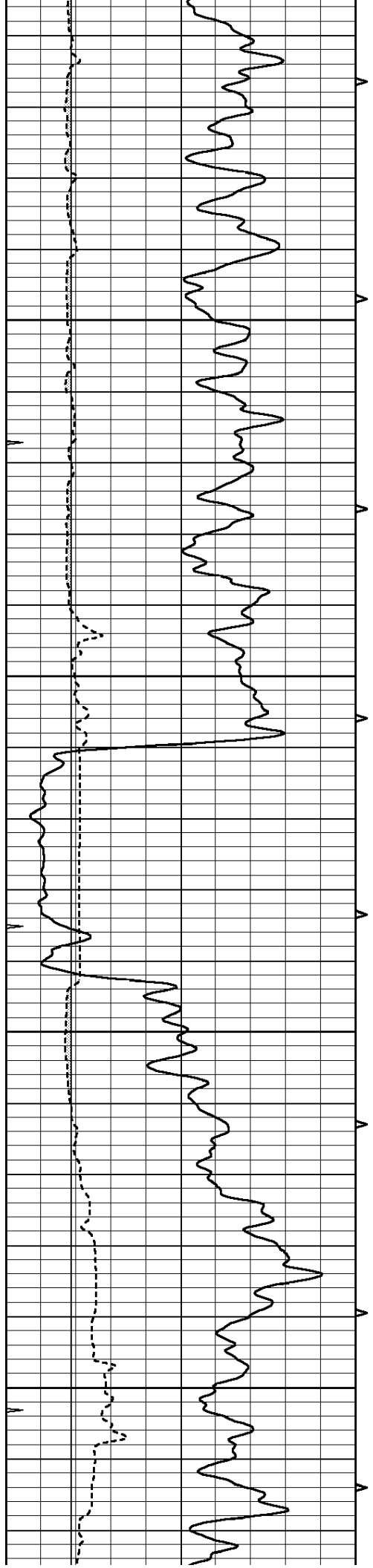
1650

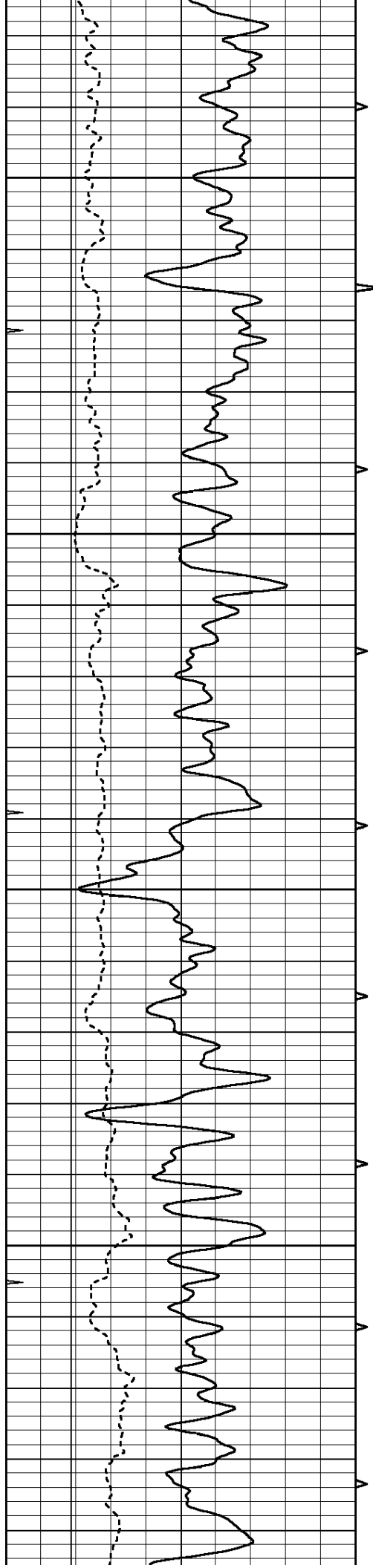
1700

1750







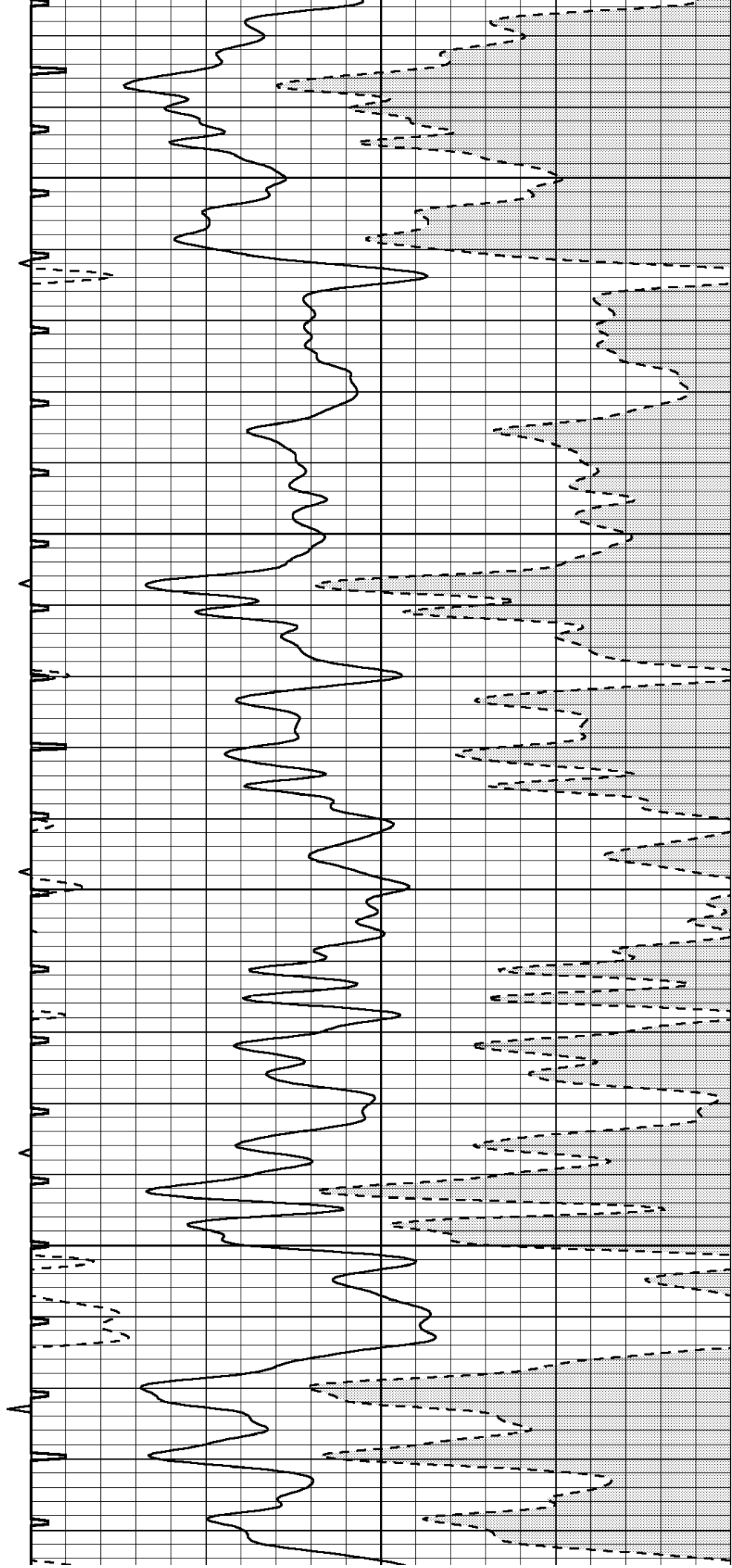


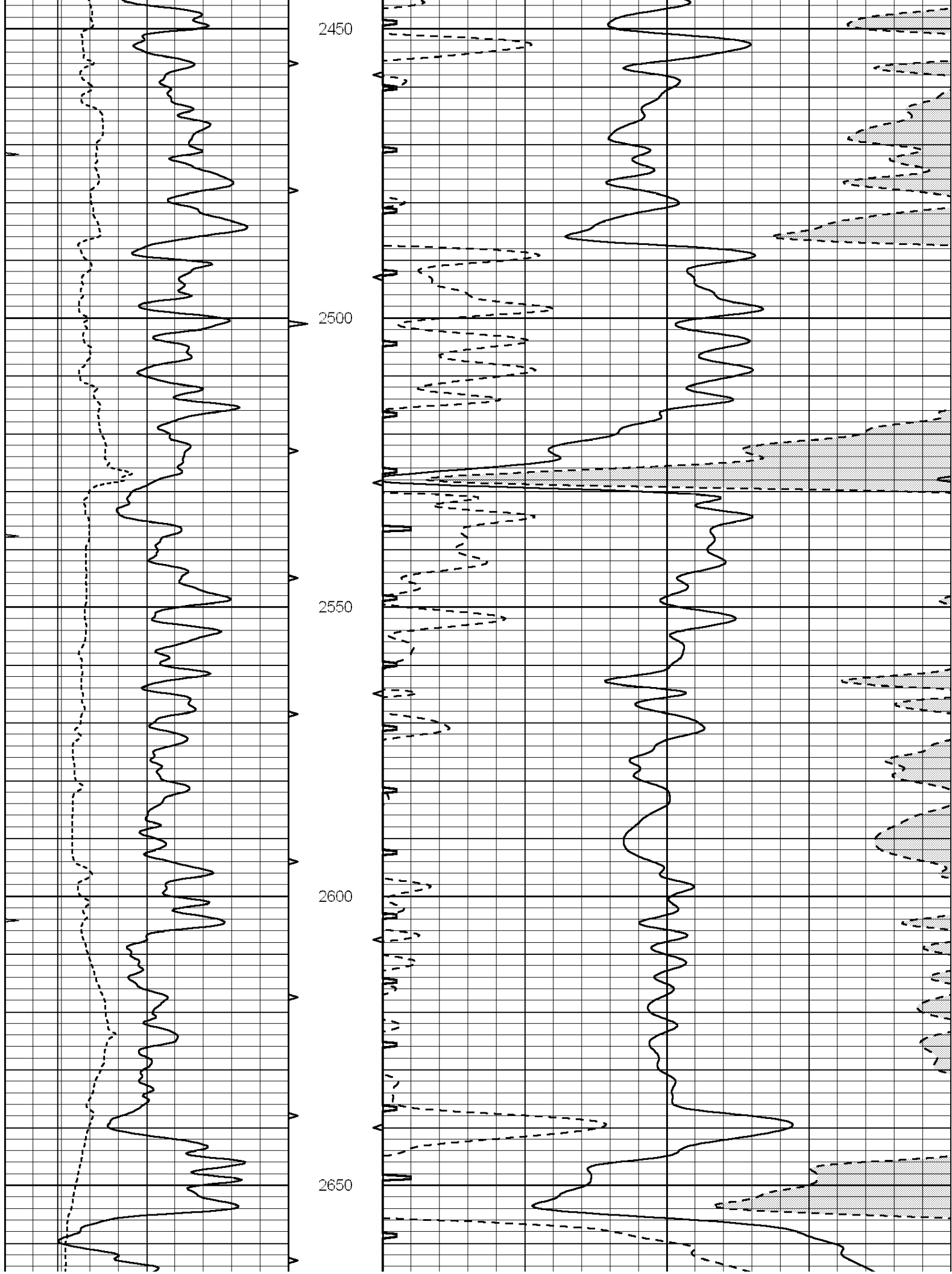
2250

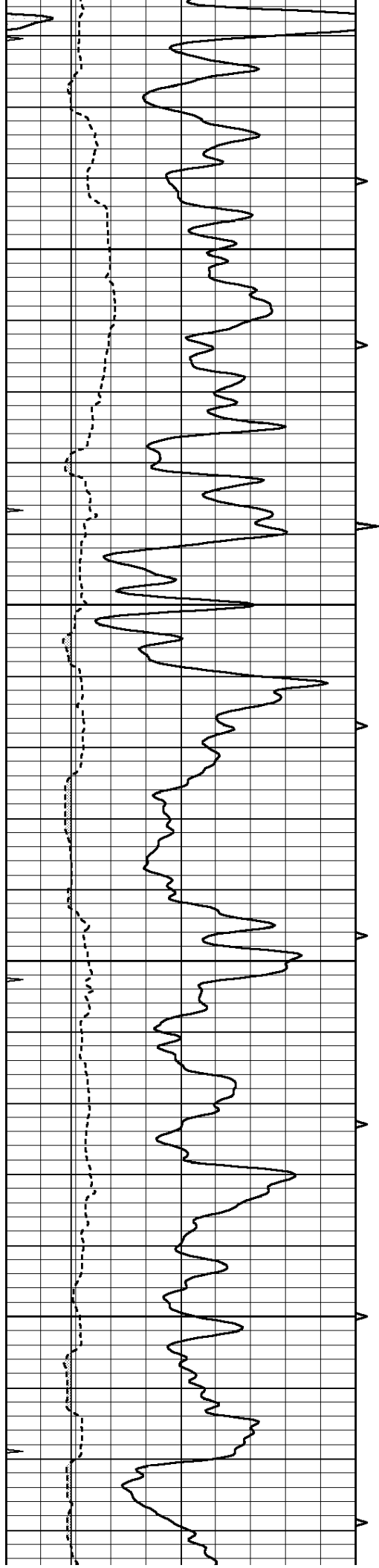
2300

2350

2400





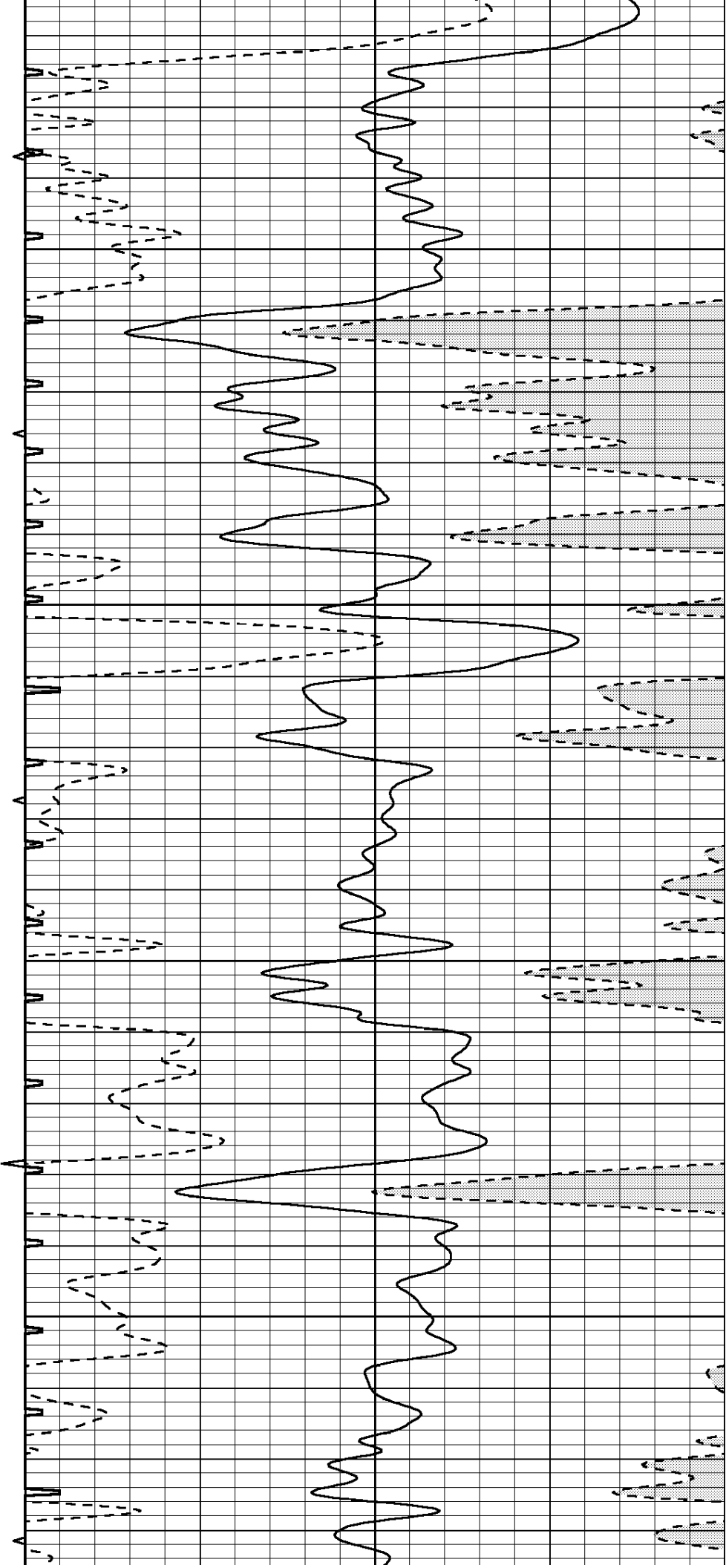


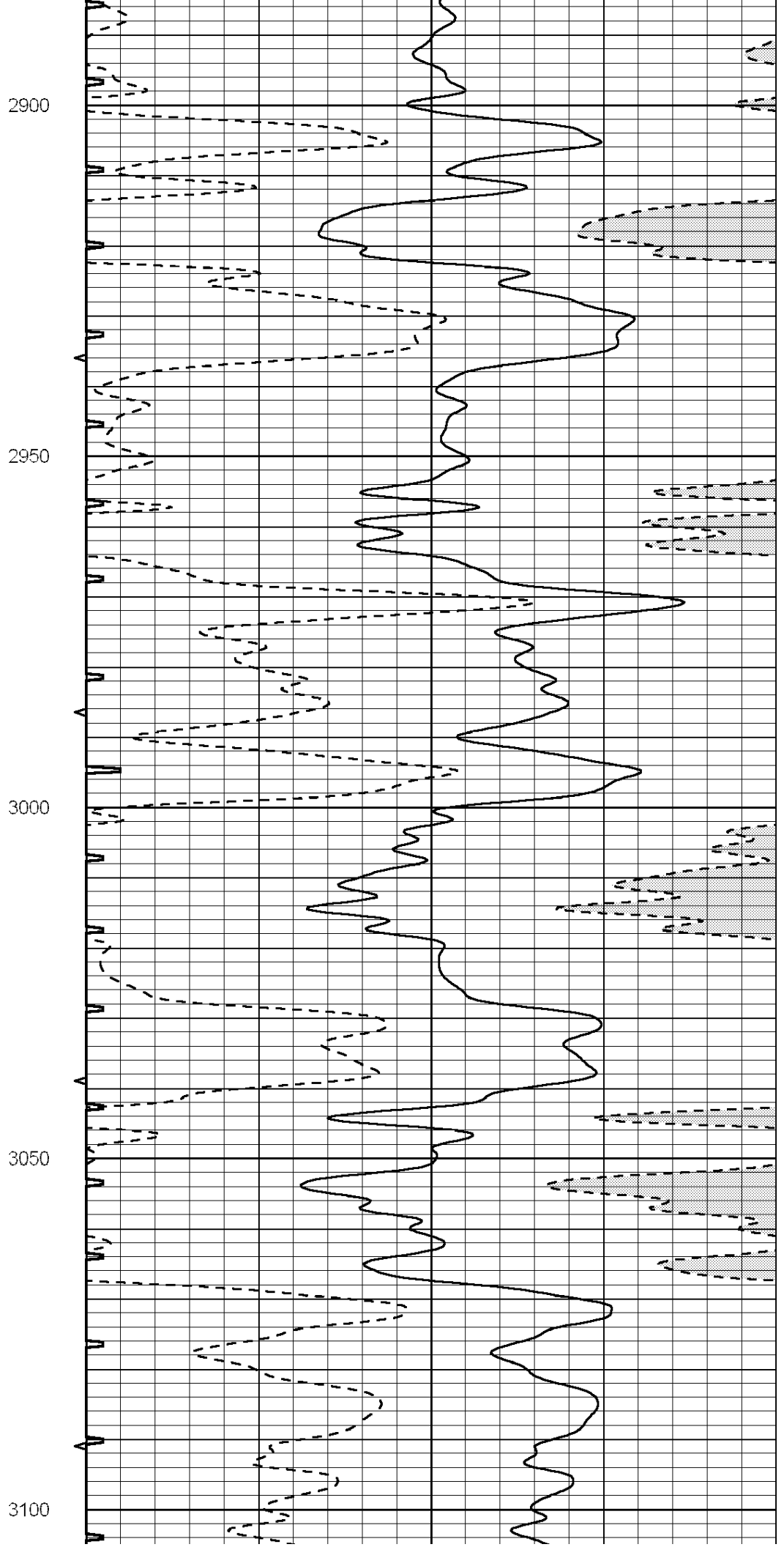
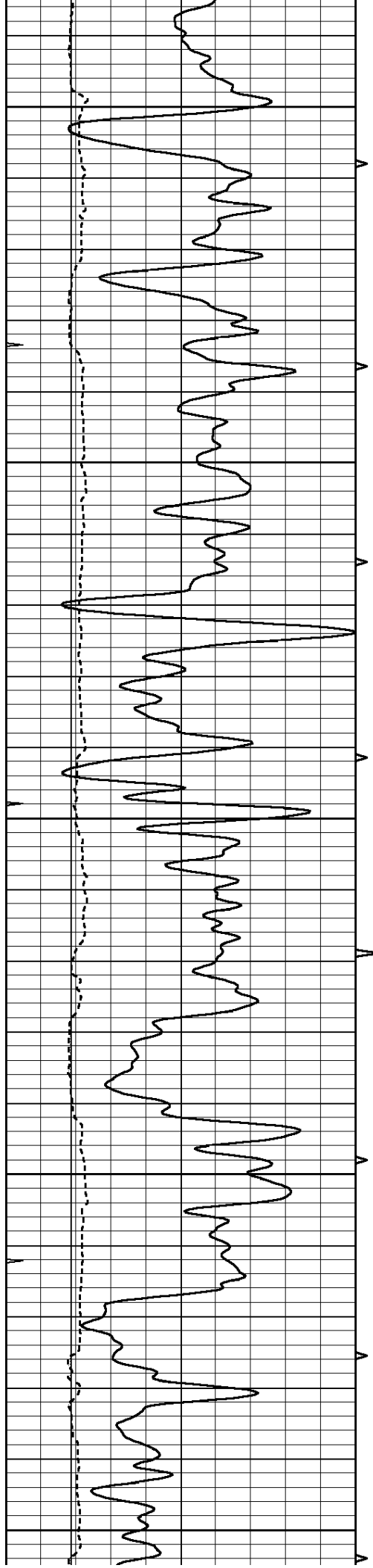
2700

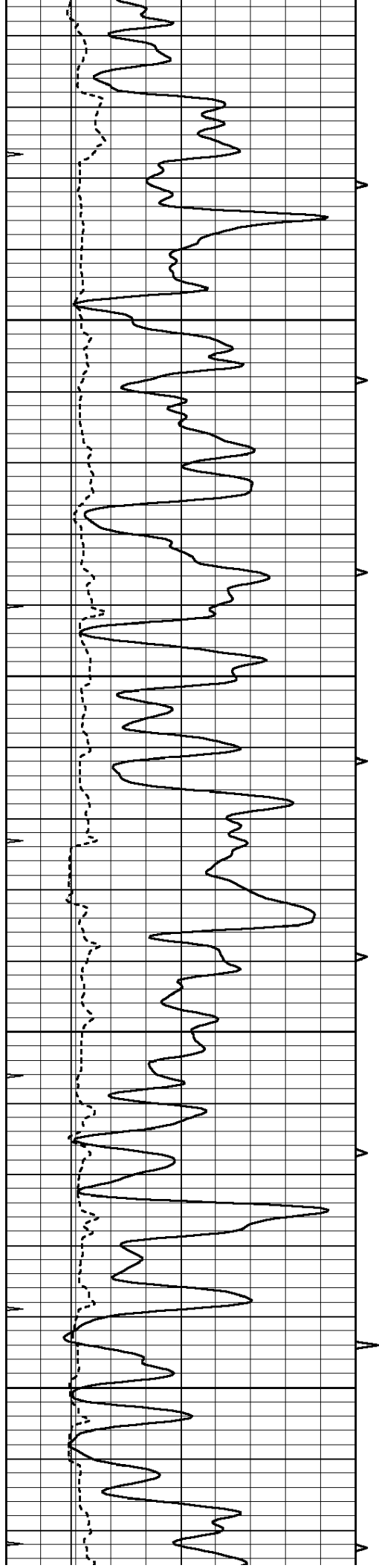
2750

2800

2850





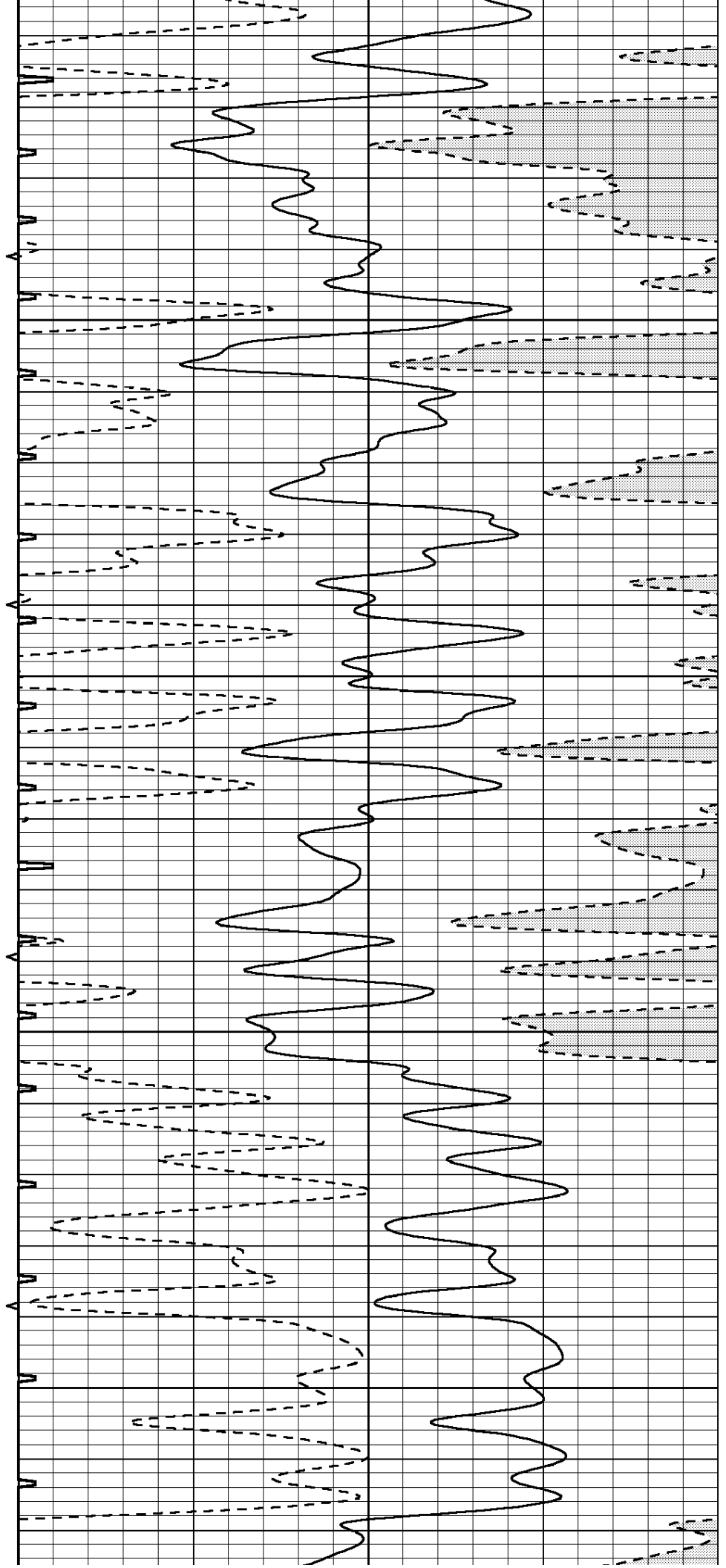


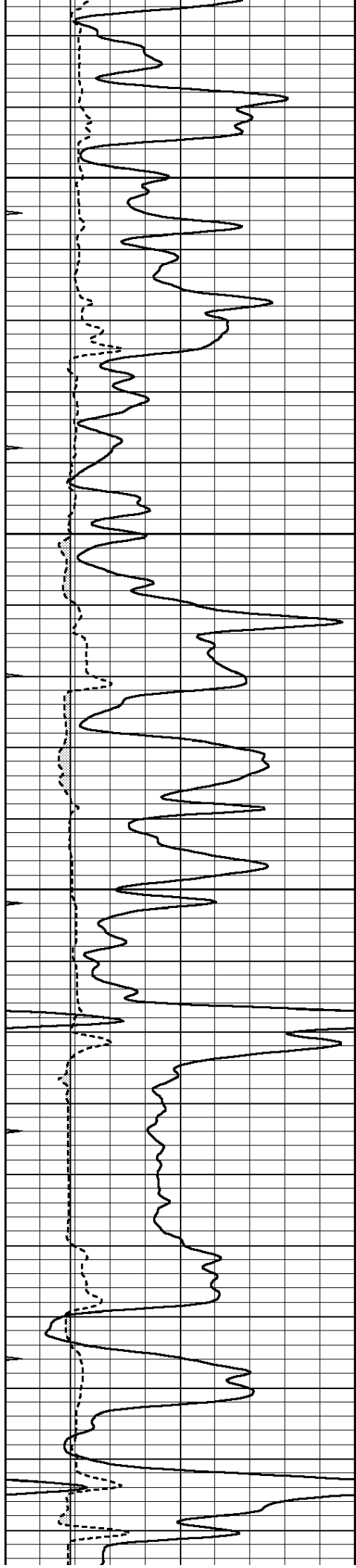
3150

3200

3250

3300



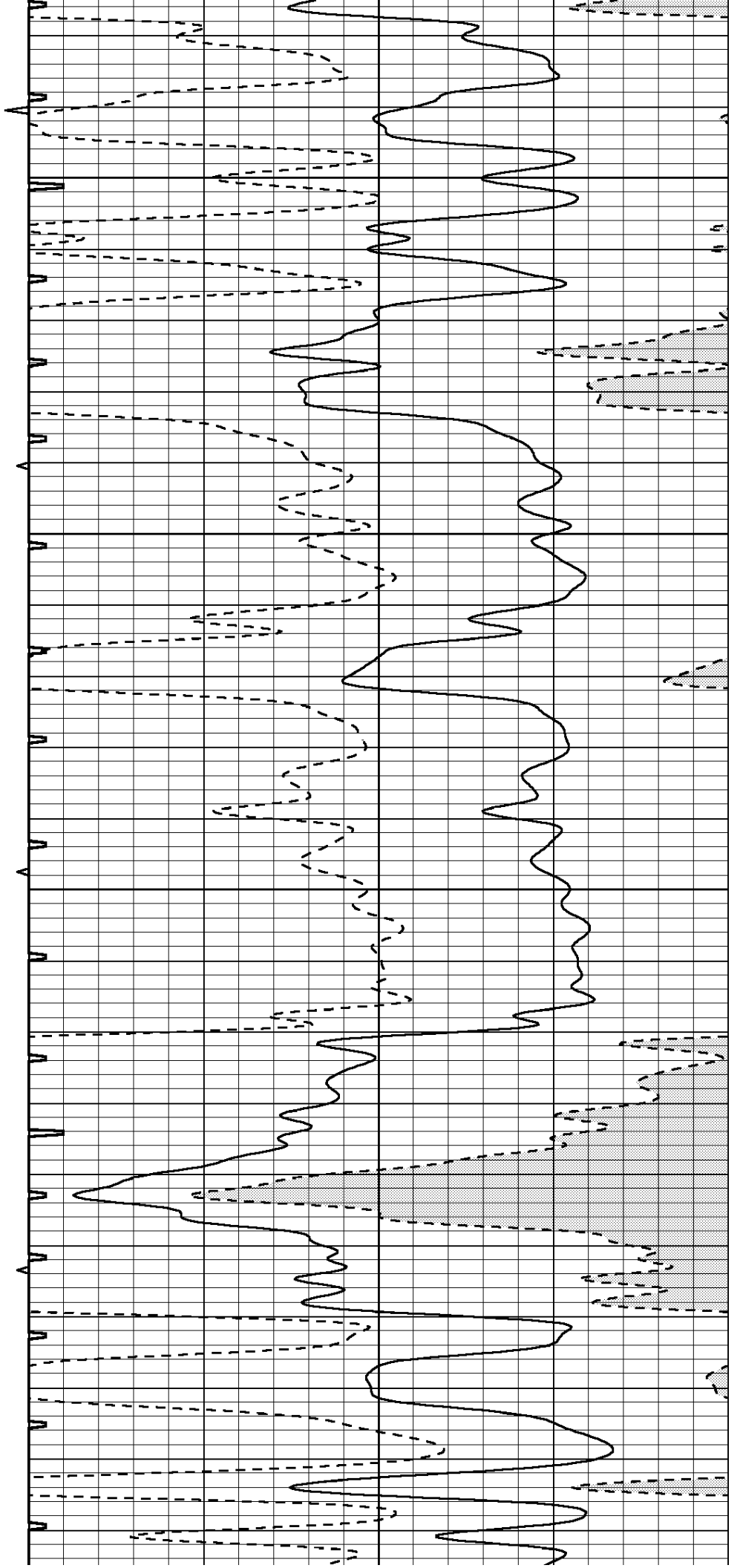


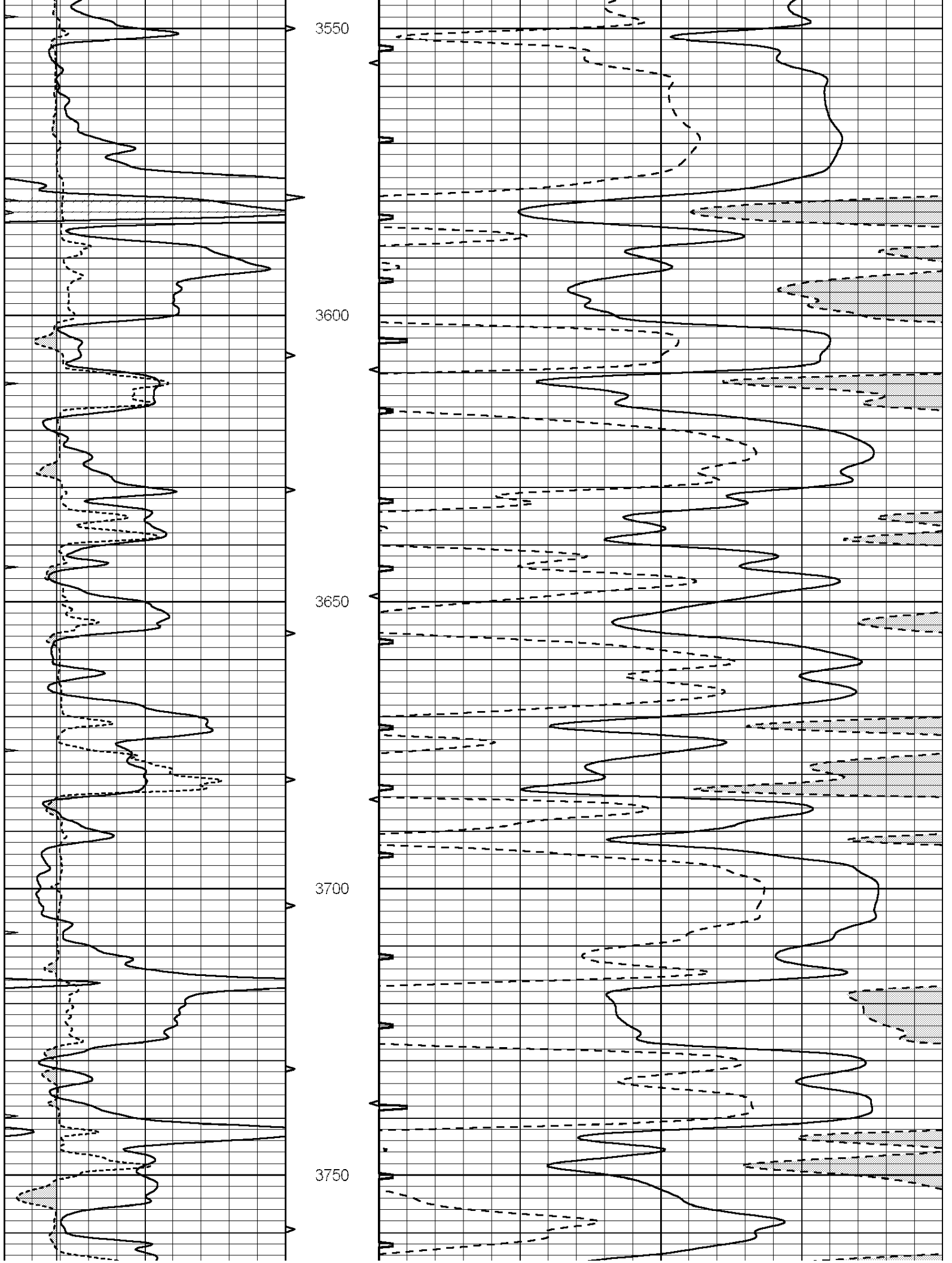
3350

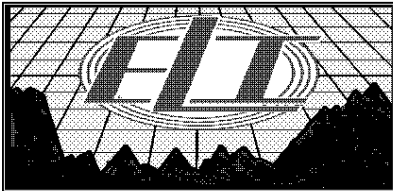
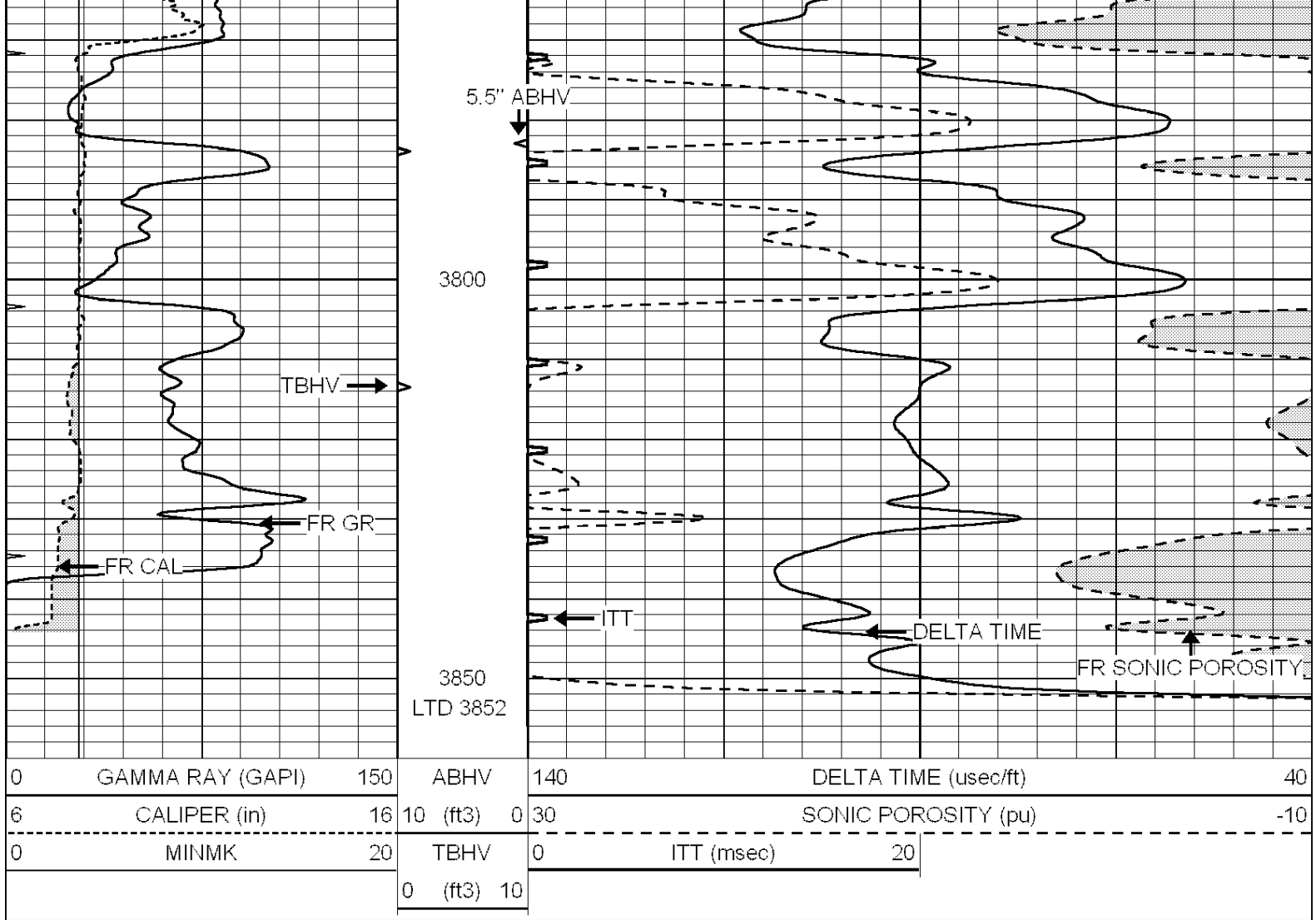
3400

3450

3500



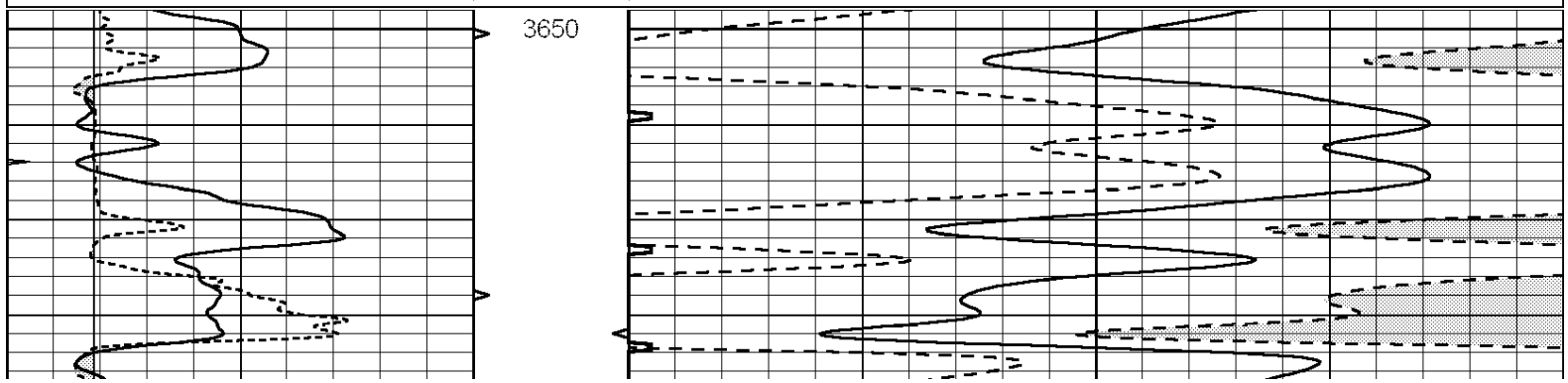


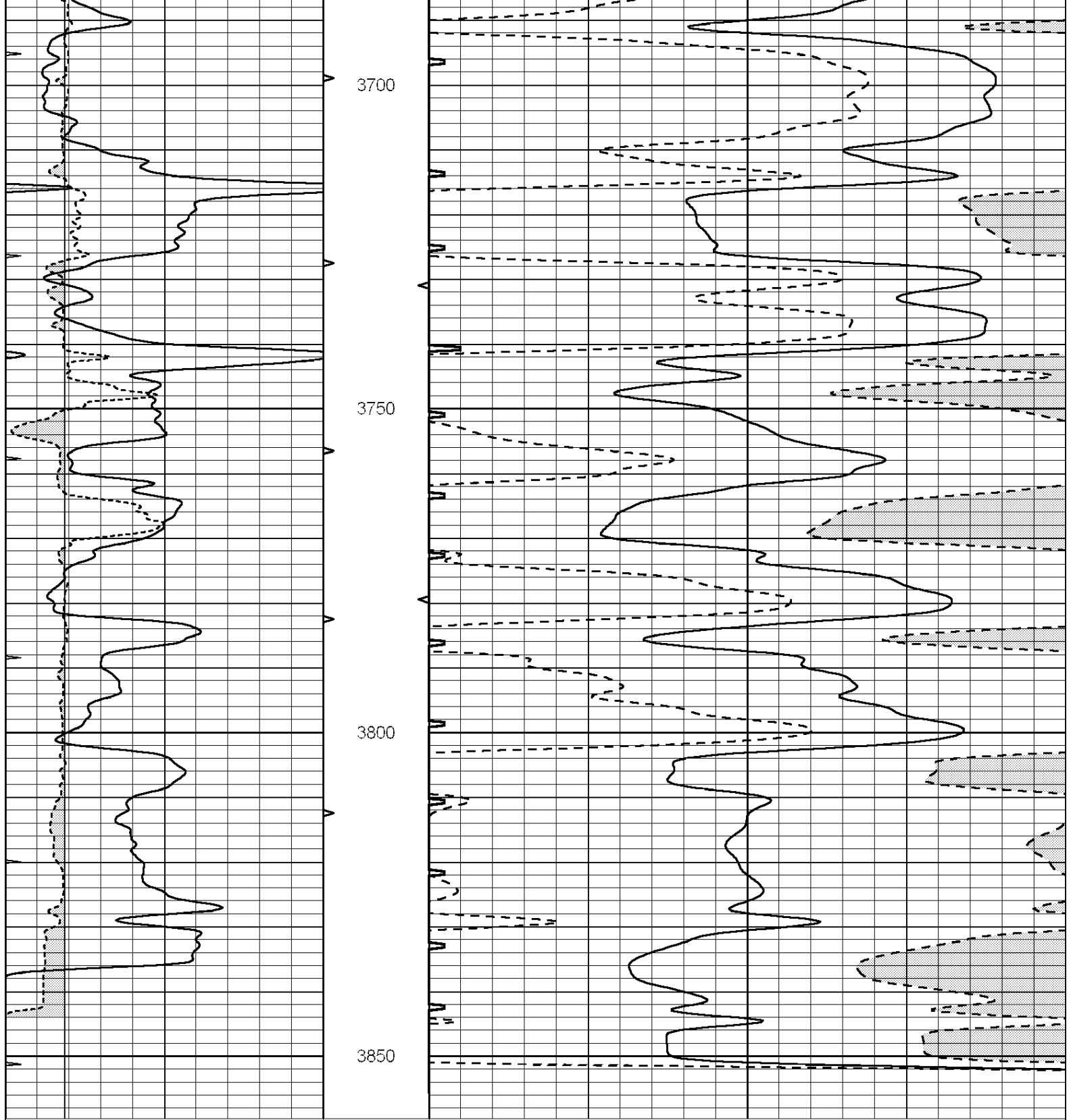


REPEAT SECTION

Database File: 1332ddn.db
 Dataset Pathname: pass5.3
 Presentation Format: slt
 Dataset Creation: Tue Dec 06 04:14:57 2016 by Calc SOC 120430
 Charted by: Depth in Feet scaled 1:240

0	GAMMA RAY (GAPI)	150	ABHV	140	DELTA TIME (usec/ft)	40
6	CALIPER (in)	16	10 (ft3) 0	30	SONIC POROSITY (pu)	-10
0	MINMK	20	TBHV	0	ITT (msec)	20
			0 (ft3) 10			





0	GAMMA RAY (GAPI)	150	ABHV	140	DELTA TIME (usec/ft)	40	
6	CALIPER (in)	16	10 (ft3)	0	30	SONIC POROSITY (pu)	-10
0	MINMK	20	TBHV	0	ITT (msec)	20	
			0 (ft3)	10			