



MICRO LOG

Company I. A. OPERATING, INC.
Well TEEL #7-1
Field WILDCAT
County GRAHAM
State KANSAS

Company I. A. OPERATING, INC.
Well TEEL #7-1
Field WILDCAT
County GRAHAM State KANSAS

Location: API # : 15-065-24124-0000
1978' FNL & 2310' FEL
S/2 - NW - SW - NE
SEC 7 TWP 6S RGE 25W
Permanent Datum GROUND LEVEL Elevation 2518
Log Measured From KELLY BUSHING 8' A.G.L.
Drilling Measured From KELLY BUSHING
Other Services
CDL/CNL
DIL/SON
Elevation
K.B. 2526
D.F. 2524
G.L. 2518

Date	12/6/16		
Run Number	TWO		
Depth Driller	3849		
Depth Logger	3852		
Bottom Logged Interval	3836		
Top Log Interval	3200		
Casing Driller	8 5/8"@306'		
Casing Logger	306		
Bit Size	7 7/8"		
Type Fluid in Hole	CHEMICAL MUD	CHLORIDES 1,200 PPM	
Density / Viscosity	9.2/5.1		
pH / Fluid Loss	11.0/6.8		
Source of Sample	FLOWLINE		
Rim @ Meas. Temp	1.10@70F		
Rmf @ Meas. Temp	.825@70F		
Rmc @ Meas. Temp	1.32@70F		
Source of Rmf / Rmc	MEASUREMENT		
Rim @ BHT	.670@115F		
Time Circulation Stopped	3.5 HOURS		
Time Logger on Bottom	1:30 A.M.		
Maximum Recorded Temperature	115F		
Equipment Number	922339		
Location	HAYS, KANSAS		
Recorded By	JEFF LUEBBERS		
Witnessed By	JEFF LAWLER		

<<< Fold Here >>>

All interpretations are opinions based on inferences from electrical or other measurements and we cannot and do not guarantee the accuracy or correctness of any interpretation, and we shall not, except in the case of gross or willful negligence on our part, be liable or responsible for any loss, costs, damages, or expenses incurred or sustained by anyone resulting from any interpretation made by any of our officers, agents or employees. These interpretations are also subject to our general terms and conditions set out in our current Price Schedule.

Comments

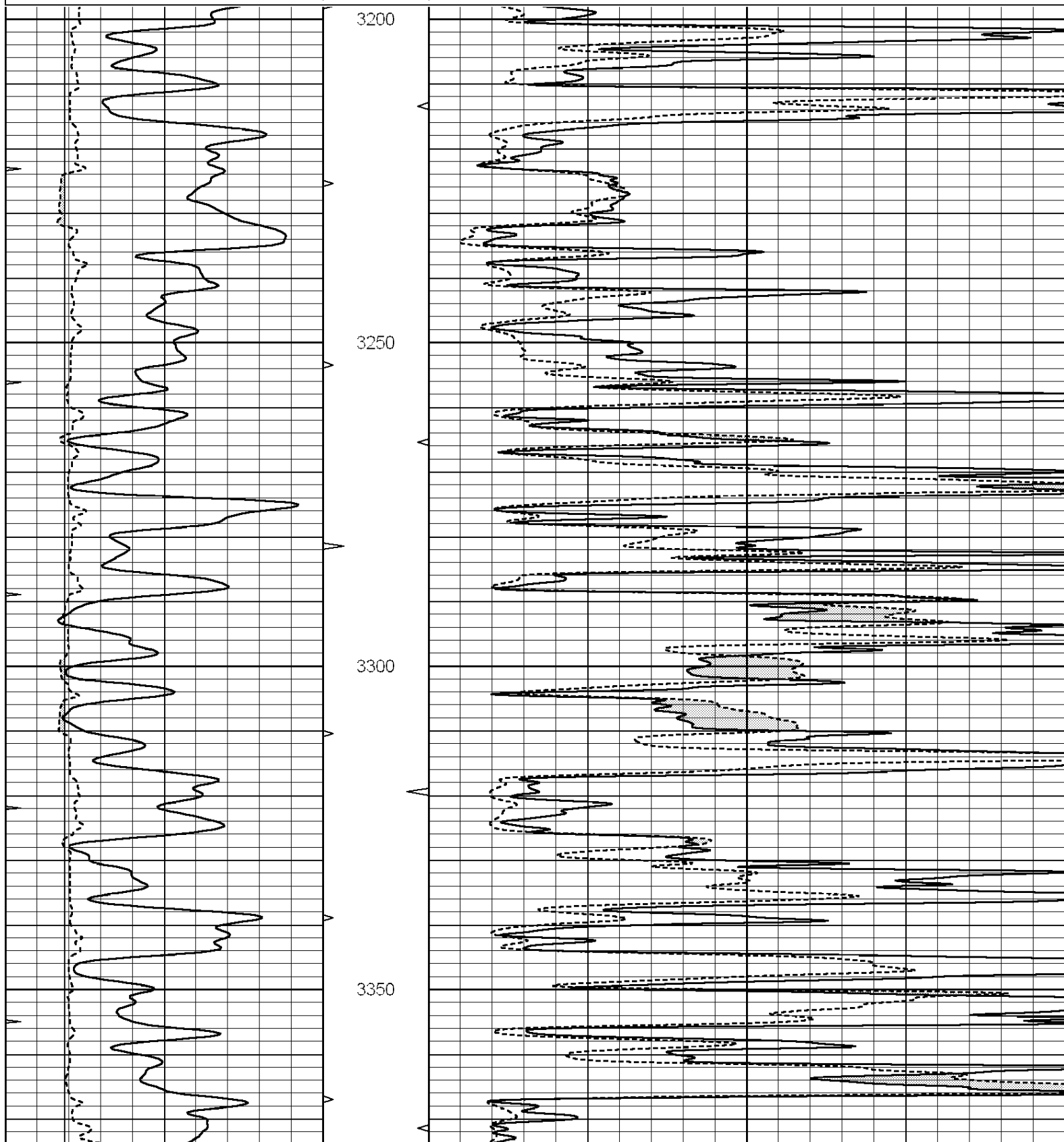
THANK YOU FOR USING ELI WIRELINE HAYS, KANSAS (785) 628-6395
DIRECTIONS
STUDLEY, KS., E. SIDE (HWY 24 & RD. 100), 13 1/2N., E. INTO ACROSS FROM FARM

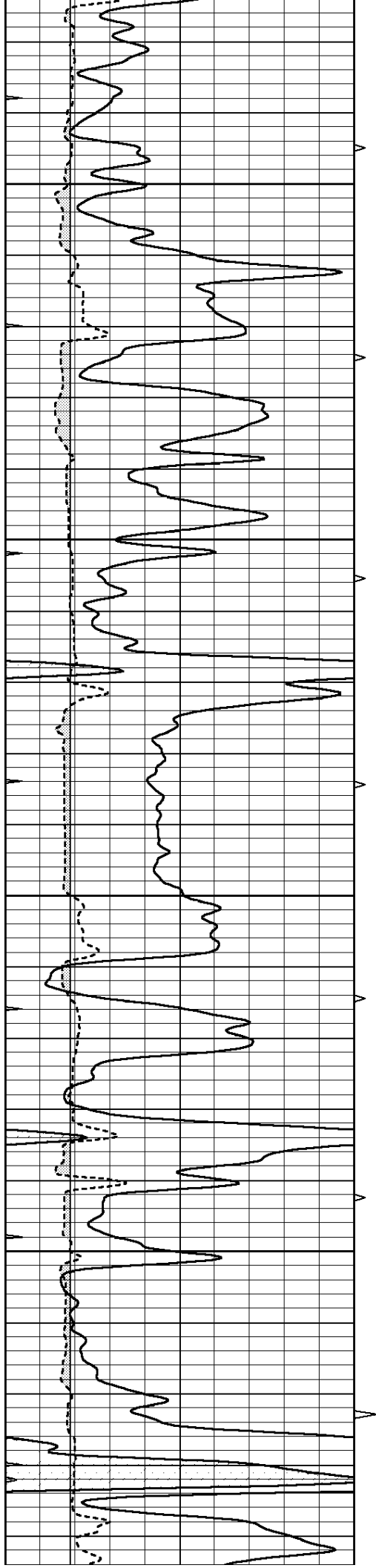


MAIN SECTION

Database File: 1332ddn.db
 Dataset Pathname: pass6.1
 Presentation Format: micro
 Dataset Creation: Tue Dec 06 04:32:54 2016 by Calc SOC 120430
 Charted by: Depth in Feet scaled 1:240

0	GAMMA RAY (GAPI)	150	ABHV	0	MEL1.5 (Ohm-m)	40
6	CALIPER (in)	16	10 (ft3)	0	MEL 20 (Ohm-m)	40
0	MINMK	20	TBHV			
			0 (ft3)	10		



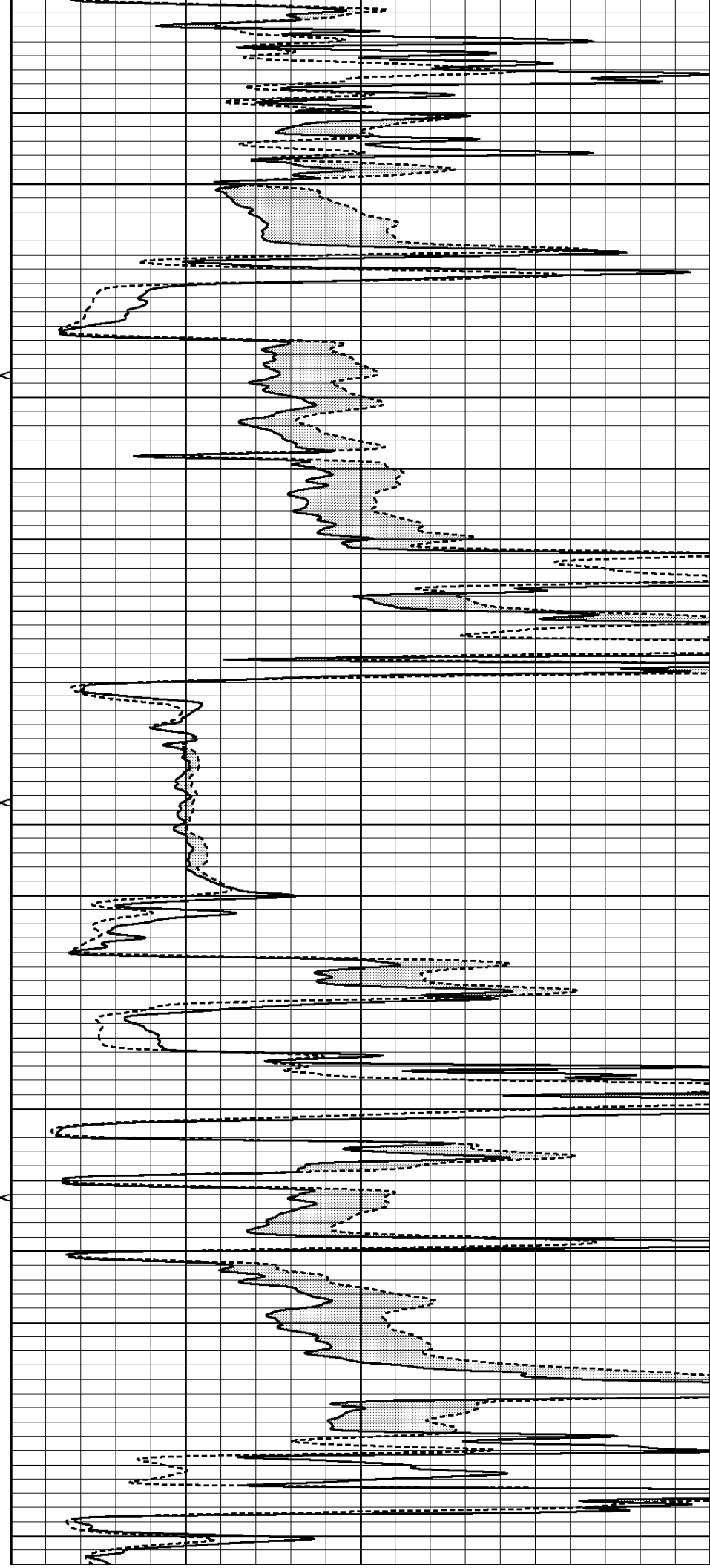


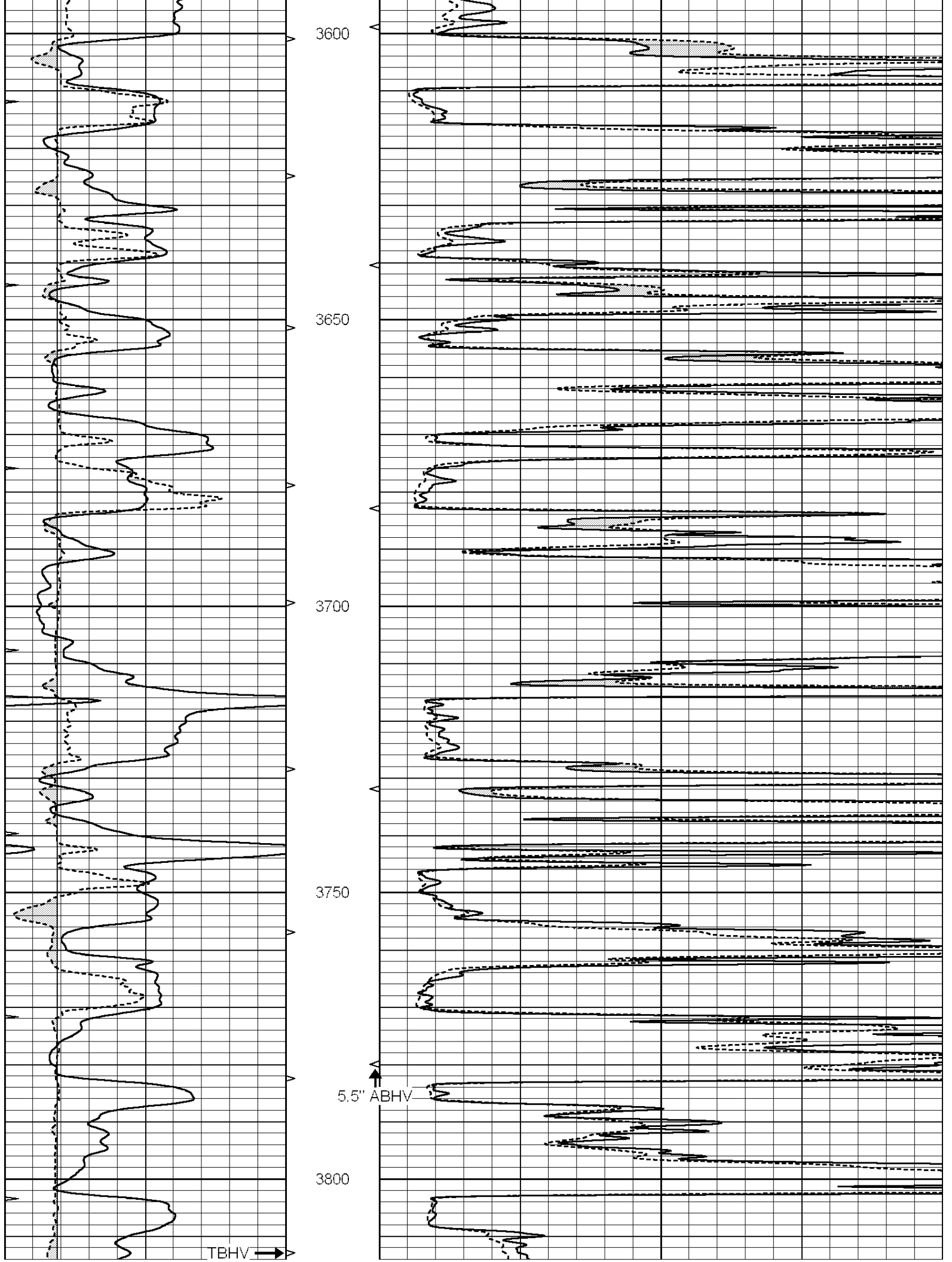
3400

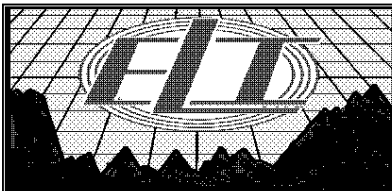
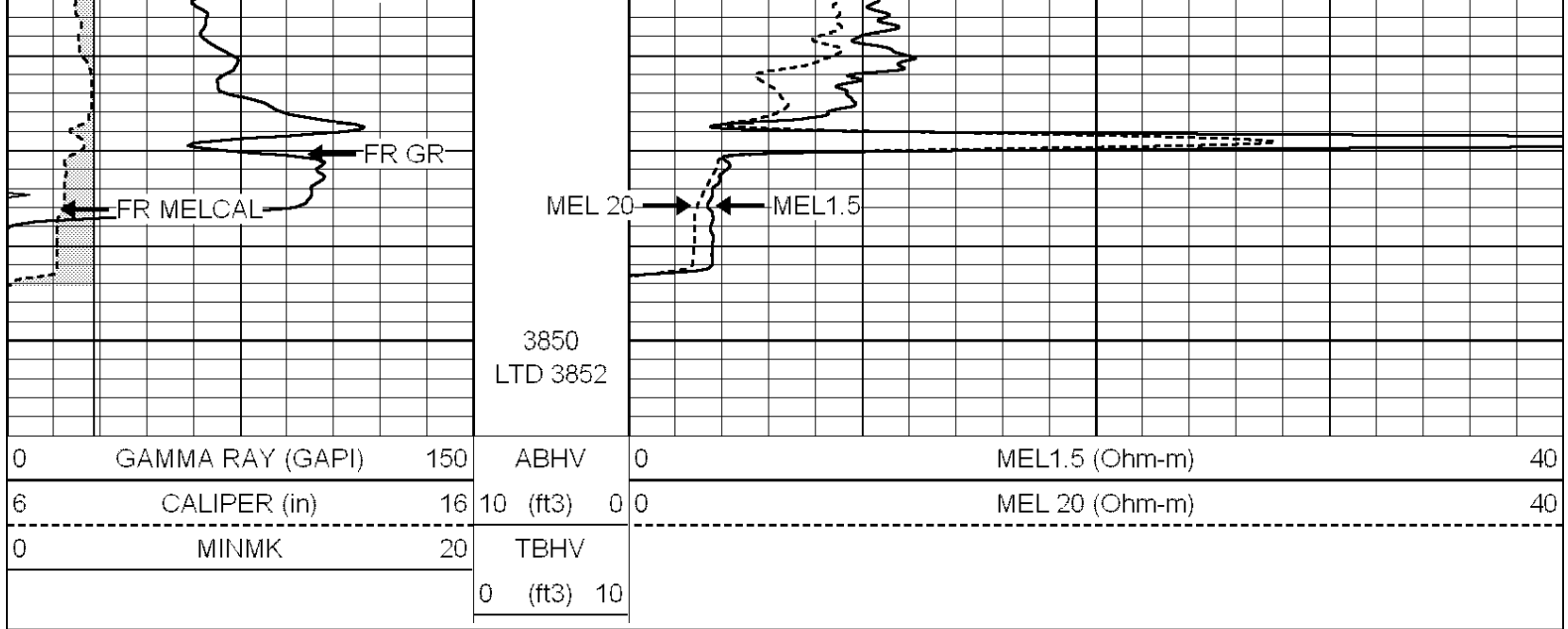
3450

3500

3550



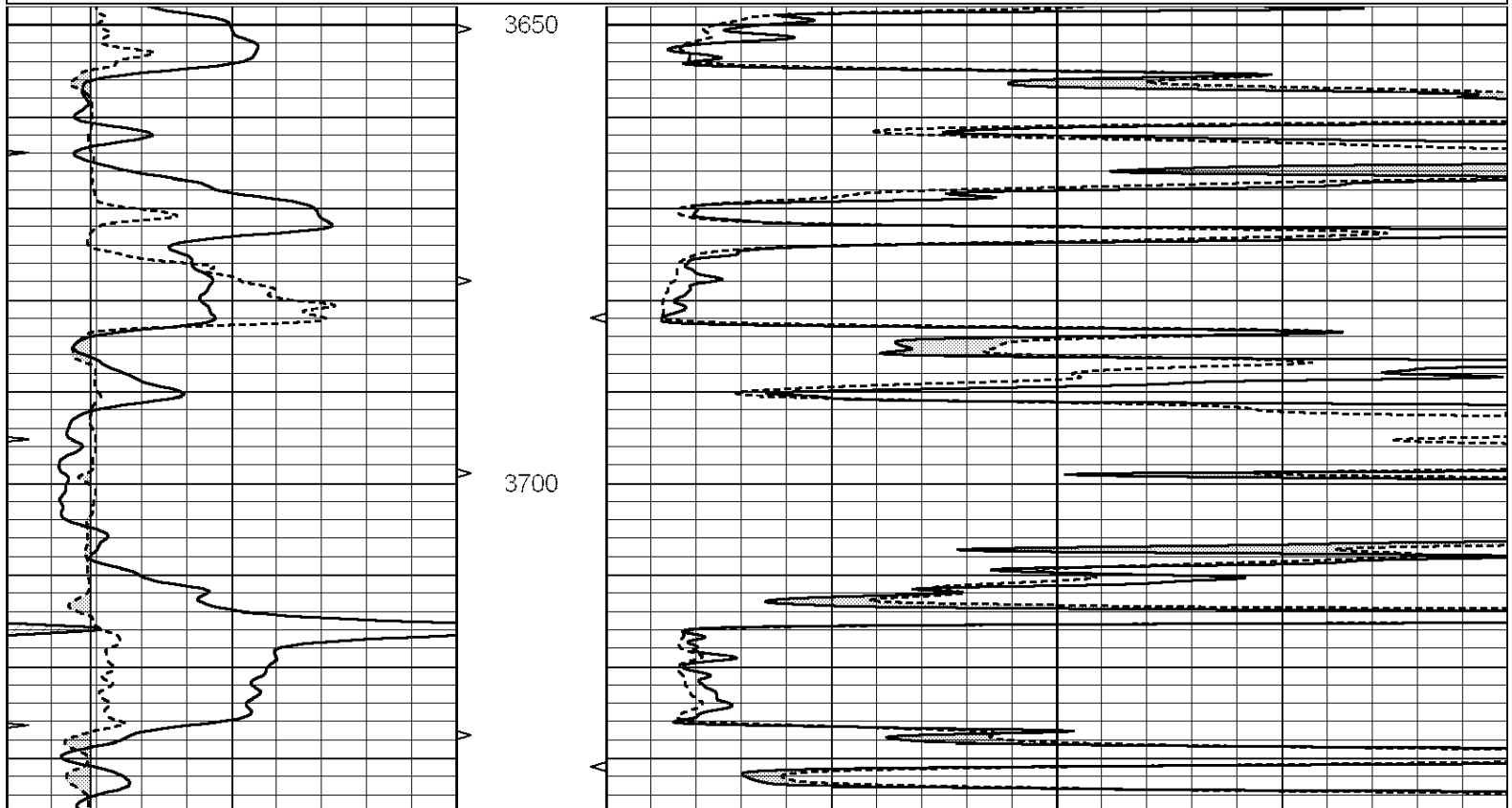


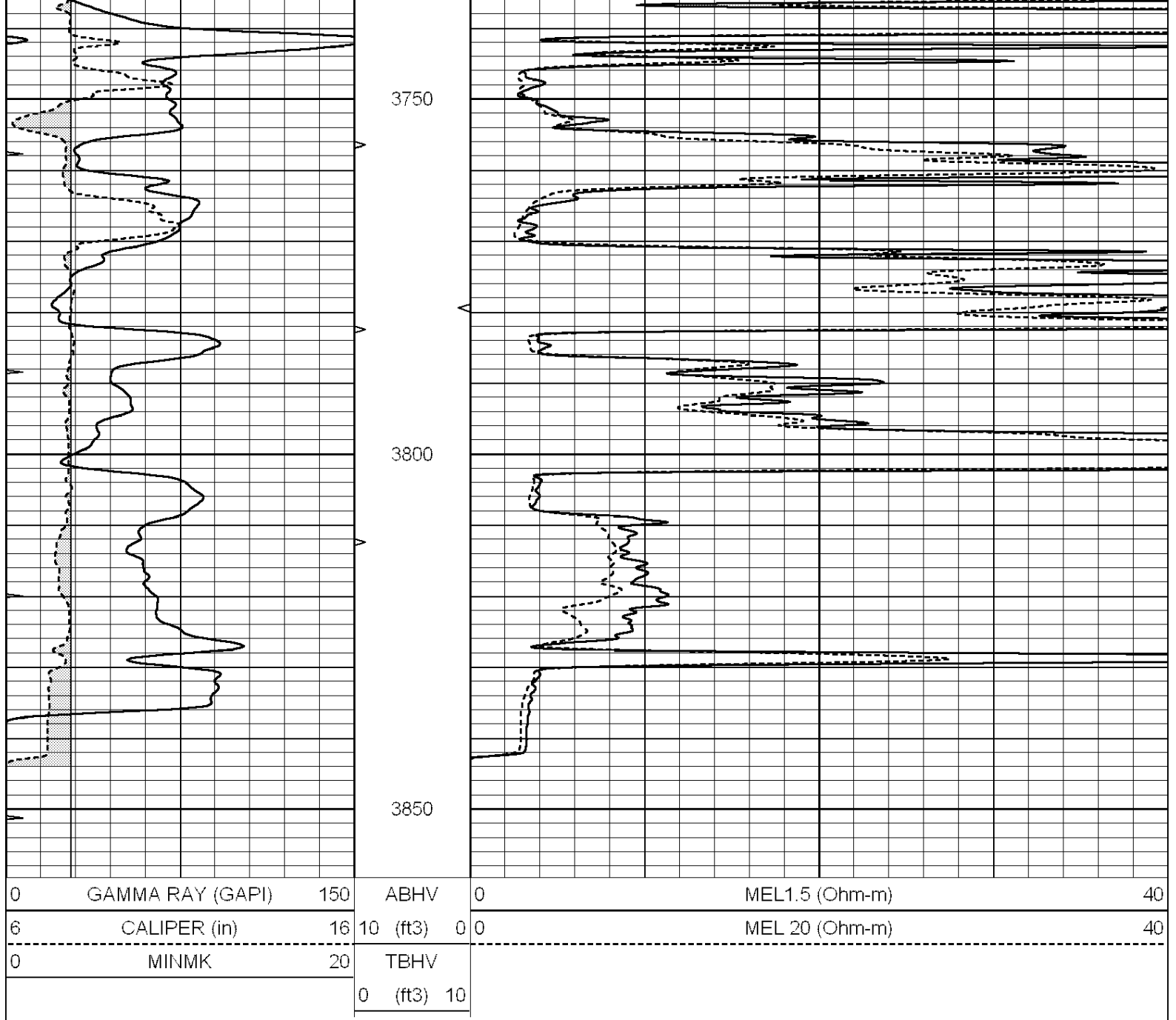


REPEAT SECTION

Database File: 1332ddn.db
 Dataset Pathname: pass5.3
 Presentation Format: micro
 Dataset Creation: Tue Dec 06 04:14:57 2016 by Calc SOC 120430
 Charted by: Depth in Feet scaled 1:240

0	GAMMA RAY (GAPI)	150	ABHV	0	MEL1.5 (Ohm-m)	40
6	CALIPER (in)	16	10 (ft3)	0	MEL 20 (Ohm-m)	40
0	MINMK	20	TBHV			
			0 (ft3)	10		





Calibration Report

Database File: 1332ddn.db
 Dataset Pathname: pass6.1
 Dataset Creation: Tue Dec 06 04:32:54 2016 by Calc SOC 120430

MICRO Calibration Report

Serial Number: 070912
 Tool Model: ProbeN
 Performed: Wed Nov 23 08:42:36 2016

Caliper Calibration: Gain=2.718 Offset=6.071

References	Low Cal	High Cal
Readings	7.400	15.000
	0.489	3.285

1.5" Calibration: Gain=42.000 Offset=-0.800

References	Low Cal	High Cal
Readings	0.000	20.000
	0.002	1.239

2" Calibration:

Gain=46.000

Offset=-0.600

References

Low Cal

High Cal

Readings

0.000

20.000

0.003

1.075

Gamma Ray Calibration Report

Serial Number:

110959

Tool Model:

OPEN_GR

Performed:

Tue Dec 06 03:03:33 2016

Calibrator Value:

1.0

GAPI

Background Reading:

0.0

cps

Calibrator Reading:

1.0

cps

Sensitivity:

0.2400

GAPI/cps