



DUAL INDUCTION LOG

Company I. A. OPERATING, INC.
 Well TEEL #7-1
 Field WILDCAT
 County GRAHAM
 State KANSAS

Company I. A. OPERATING, INC.
 Well TEEL #7-1
 Field WILDCAT
 County GRAHAM State KANSAS

Location: API # : 15-065-24124-0000
 1978' FNL & 2310' FEL
 S/2 - NW - SW - NE
 SEC 7 TWP 6S RGE 25W
 Permanent Datum GROUND LEVEL Elevation 2518
 Log Measured From KELLY BUSHING 8' A.G.L.
 Drilling Measured From KELLY BUSHING
 Other Services
 CDL/CNL
 MEL/SON
 Elevation
 K.B. 2526
 D.F. 2524
 G.L. 2518

Date	12/6/16		
Run Number	ONE		
Depth Driller	3849		
Depth Logger	3852		
Bottom Logged Interval	3850		
Top Log Interval	00		
Casing Driller	8 5/8"@306'		
Casing Logger	306		
Bit Size	7 7/8"		
Type Fluid in Hole	CHEMICAL MUD	CHLORIDES 1,200 PPM	
Density / Viscosity	9.2/5.1		
pH / Fluid Loss	11.0/6.8		
Source of Sample	FLOWLINE		
Rim @ Meas. Temp	1.10@70F		
Rmf @ Meas. Temp	.825@70F		
Rmc @ Meas. Temp	1.32@70F		
Source of Rmf / Rmc	MEASUREMENT		
Rim @ BHT	.670@115F		
Time Circulation Stopped	2 HOURS		
Time Logger on Bottom	1:30 A.M.		
Maximum Recorded Temperature	115F		
Equipment Number	922339		
Location	HAYS, KANSAS		
Recorded By	JEFF LUEBBERS		
Witnessed By	JEFF LAWLER		

<<< Fold Here >>>

All interpretations are opinions based on inferences from electrical or other measurements and we cannot and do not guarantee the accuracy or correctness of any interpretation, and we shall not, except in the case of gross or willful negligence on our part, be liable or responsible for any loss, costs, damages, or expenses incurred or sustained by anyone resulting from any interpretation made by any of our officers, agents or employees. These interpretations are also subject to our general terms and conditions set out in our current Price Schedule.

Comments

THANK YOU FOR USING ELI WIRELINE HAYS, KANSAS (785) 628-6395
 DIRECTIONS
 STUDLEY, KS., E. SIDE (HWY 24 & RD. 100), 13 1/2N., E. INTO ACROSS FROM FARM



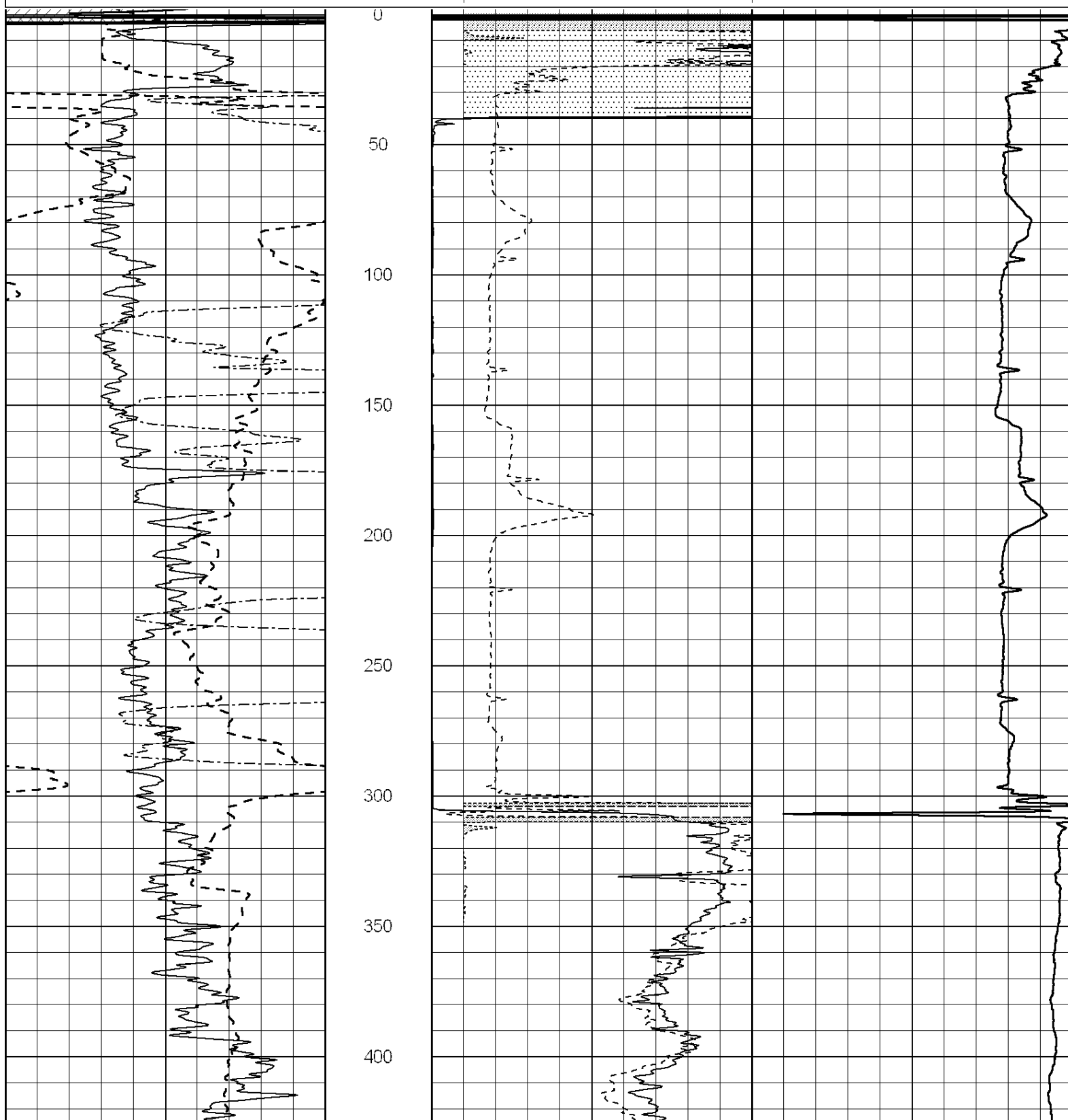
MAIN SECTION

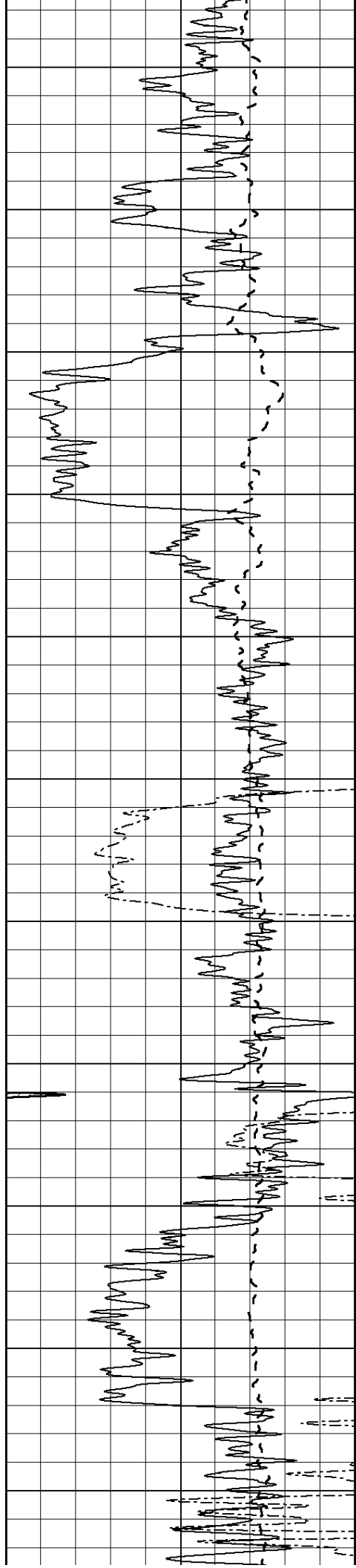
Database File: 1332ddn.db
 Dataset Pathname: pass3.2
 Presentation Format: dil2
 Dataset Creation: Tue Dec 06 02:48:56 2016 by Calc SOC 120430
 Charted by: Depth in Feet scaled 1:600

0	Gamma Ray (GAPI)	150
-100	SP (mV)	100
0	RWA (Ohm-m)	1

0	RLL3 (Ohm-m)	50
0	RILD (Ohm-m)	50
1000	CILD (mmho/m)	0

50	RILD X10 (Ohm-m)	500
50	RLL3 X10 (Ohm-m)	500





450

500

550

600

650

700

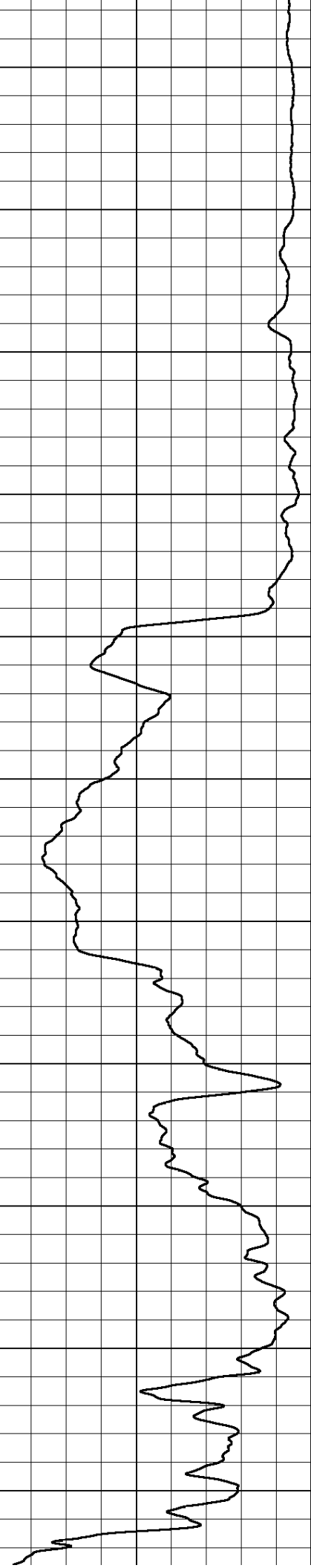
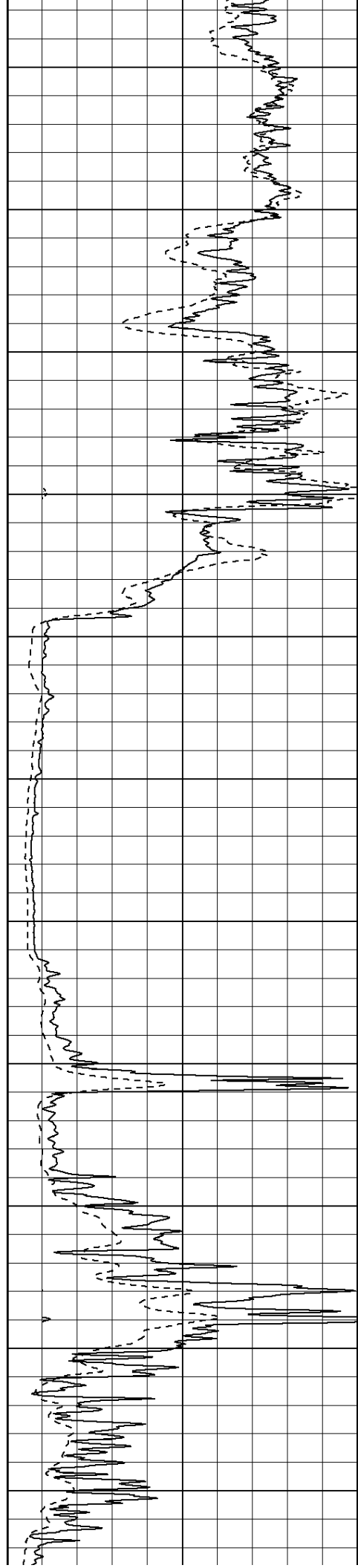
750

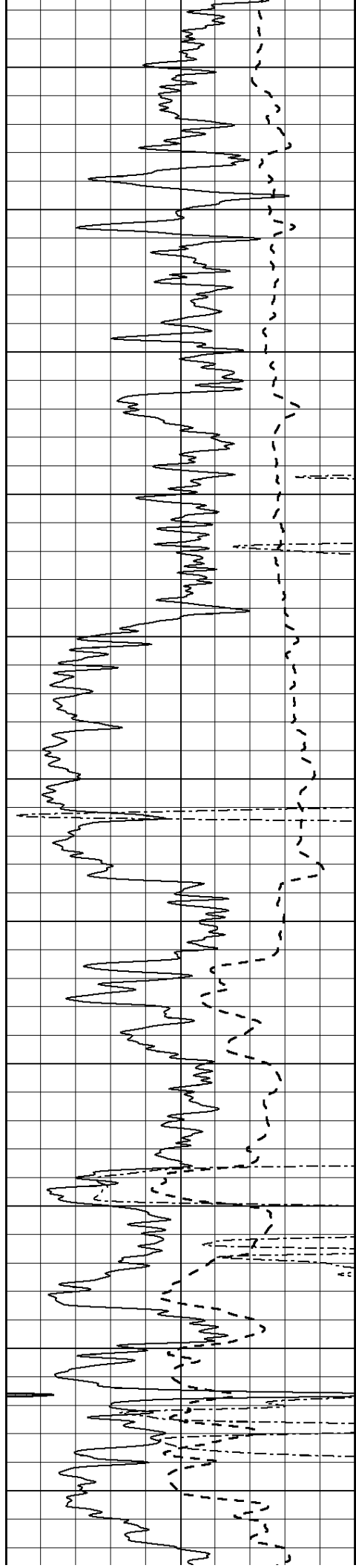
800

850

900

950





1000

1050

1100

1150

1200

1250

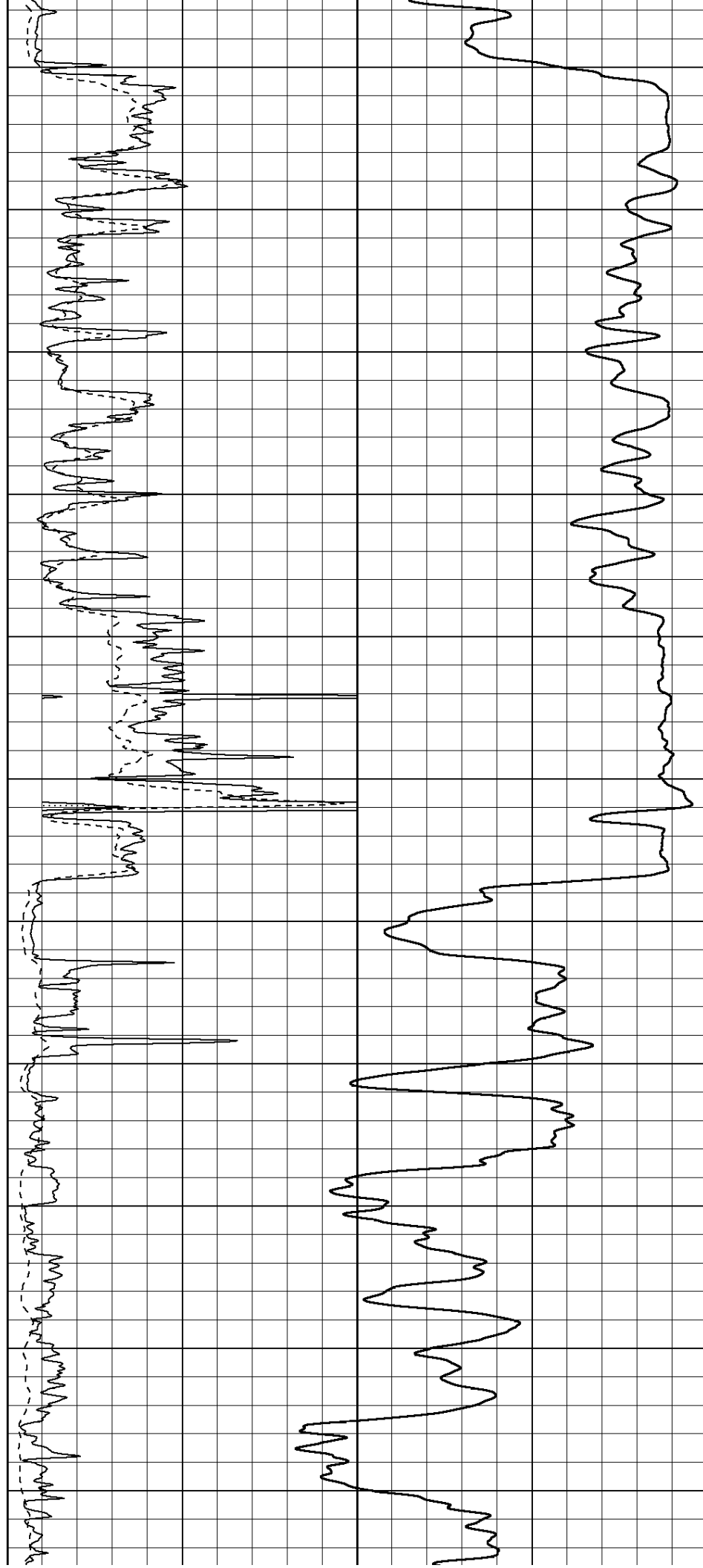
1300

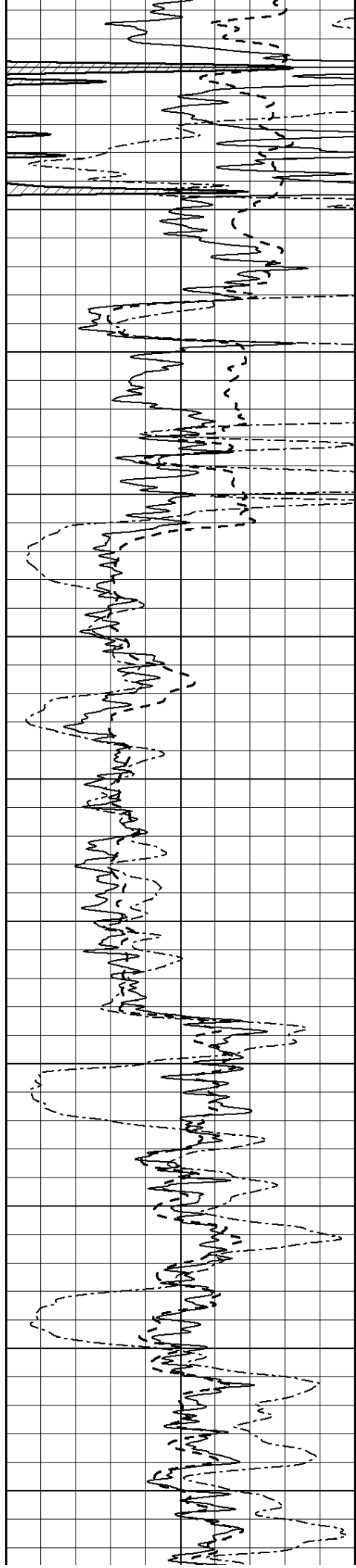
1350

1400

1450

1500





1550

1600

1650

1700

1750

1800

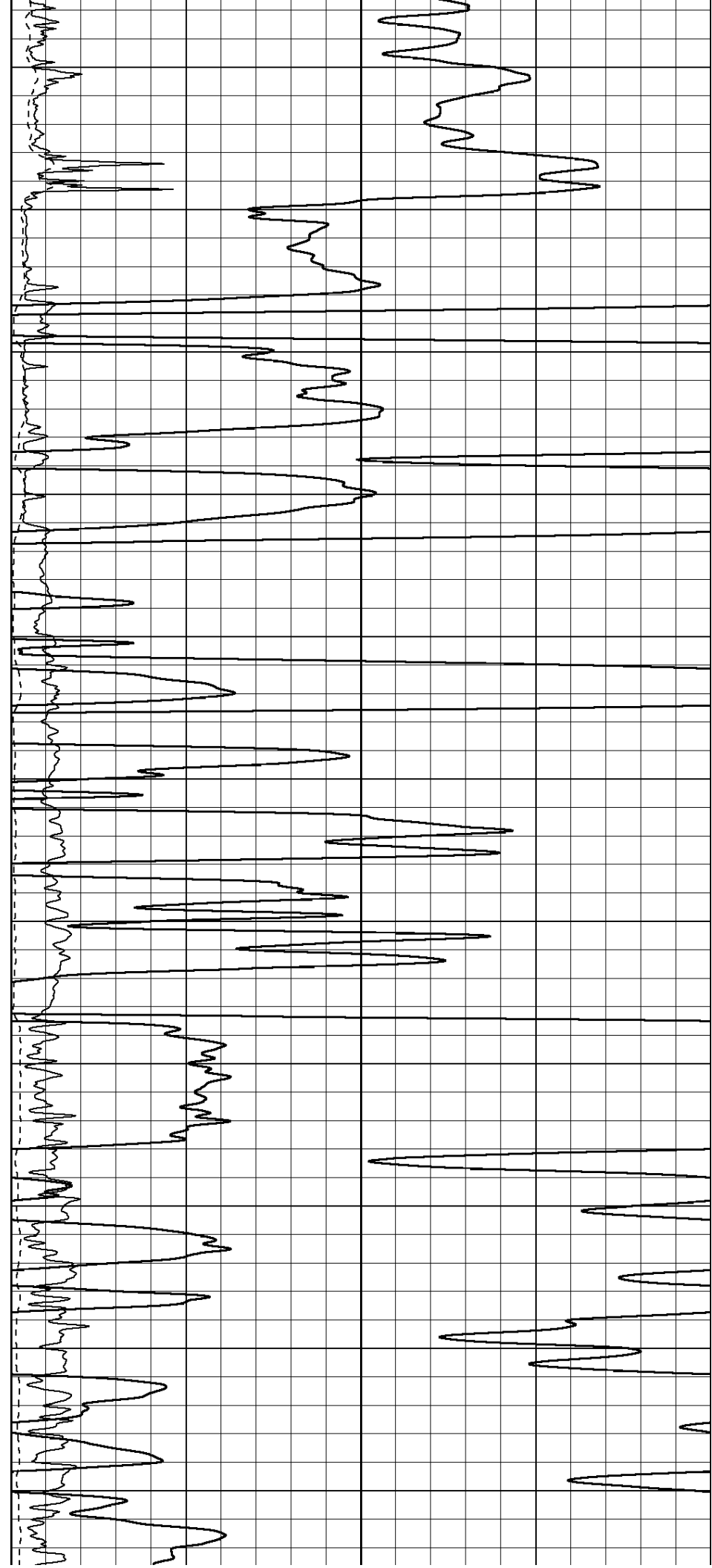
1850

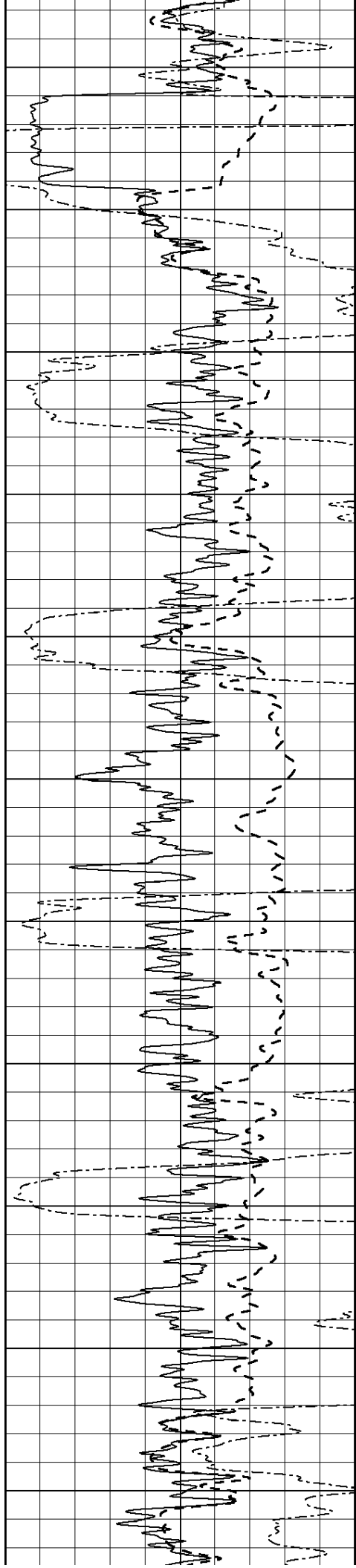
1900

1950

2000

2050





2100

2150

2200

2250

2300

2350

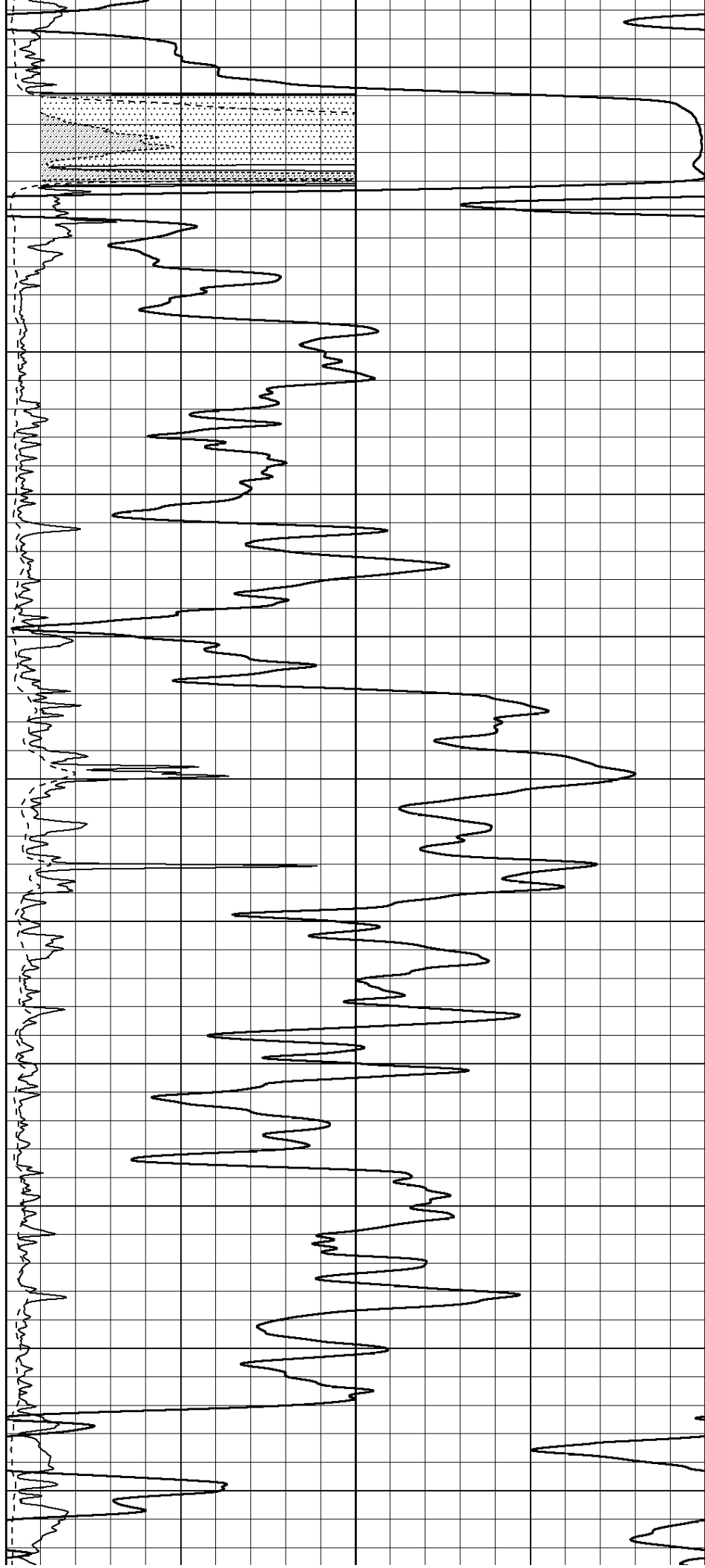
2400

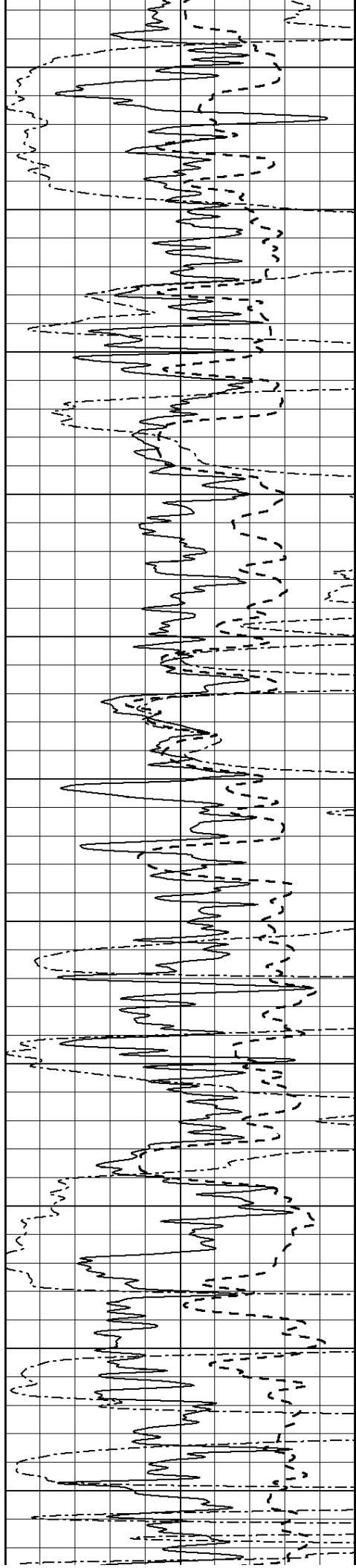
2450

2500

2550

2600





2650

2700

2750

2800

2850

2900

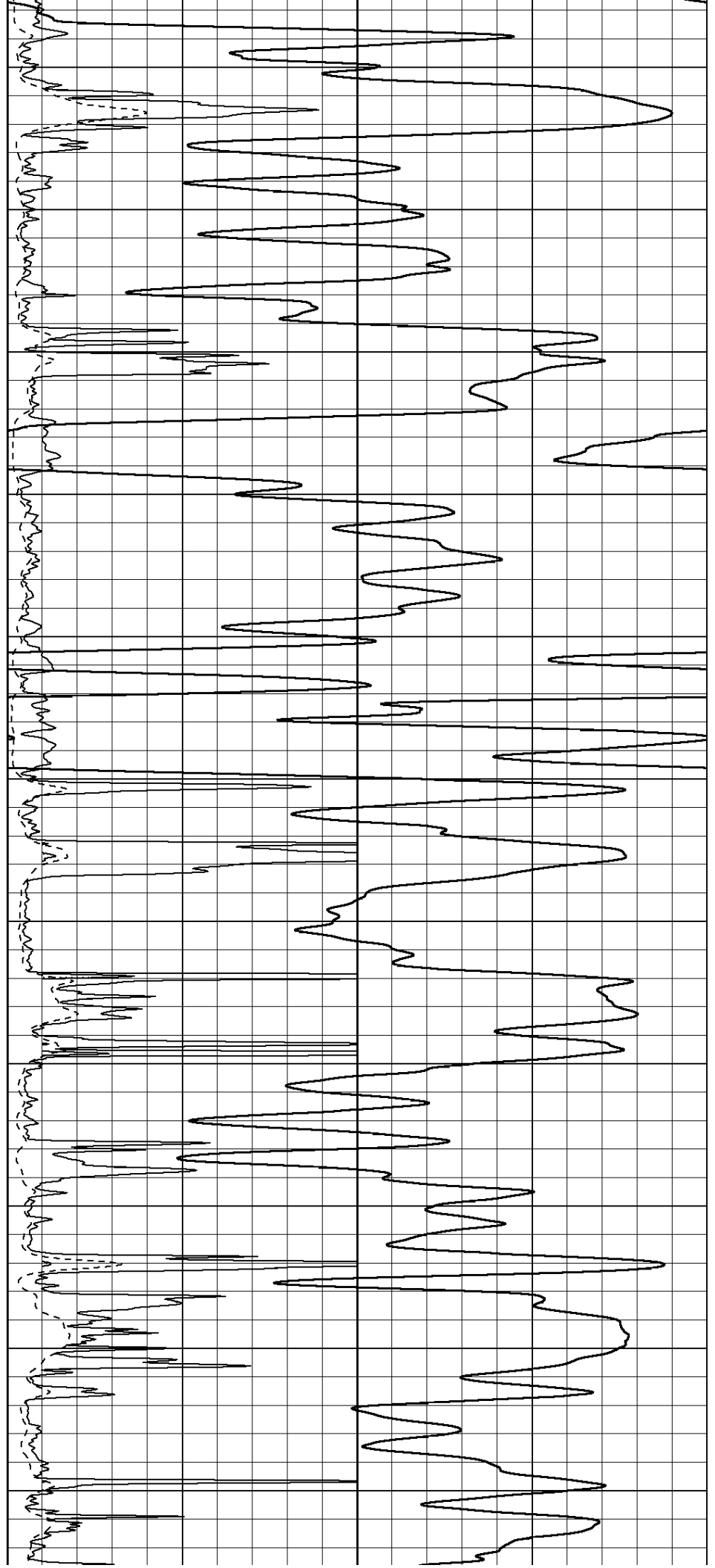
2950

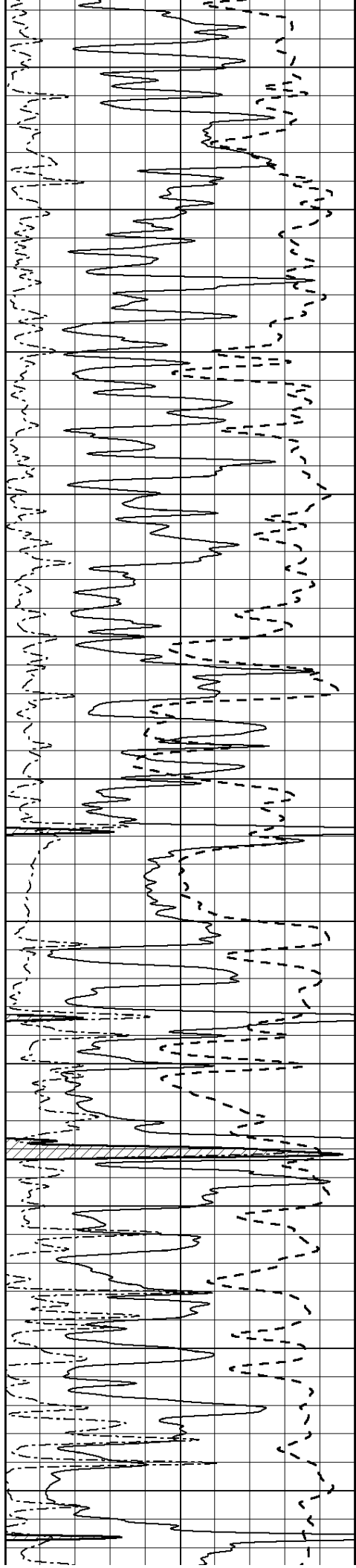
3000

3050

3100

3150





3200

3250

3300

3350

3400

3450

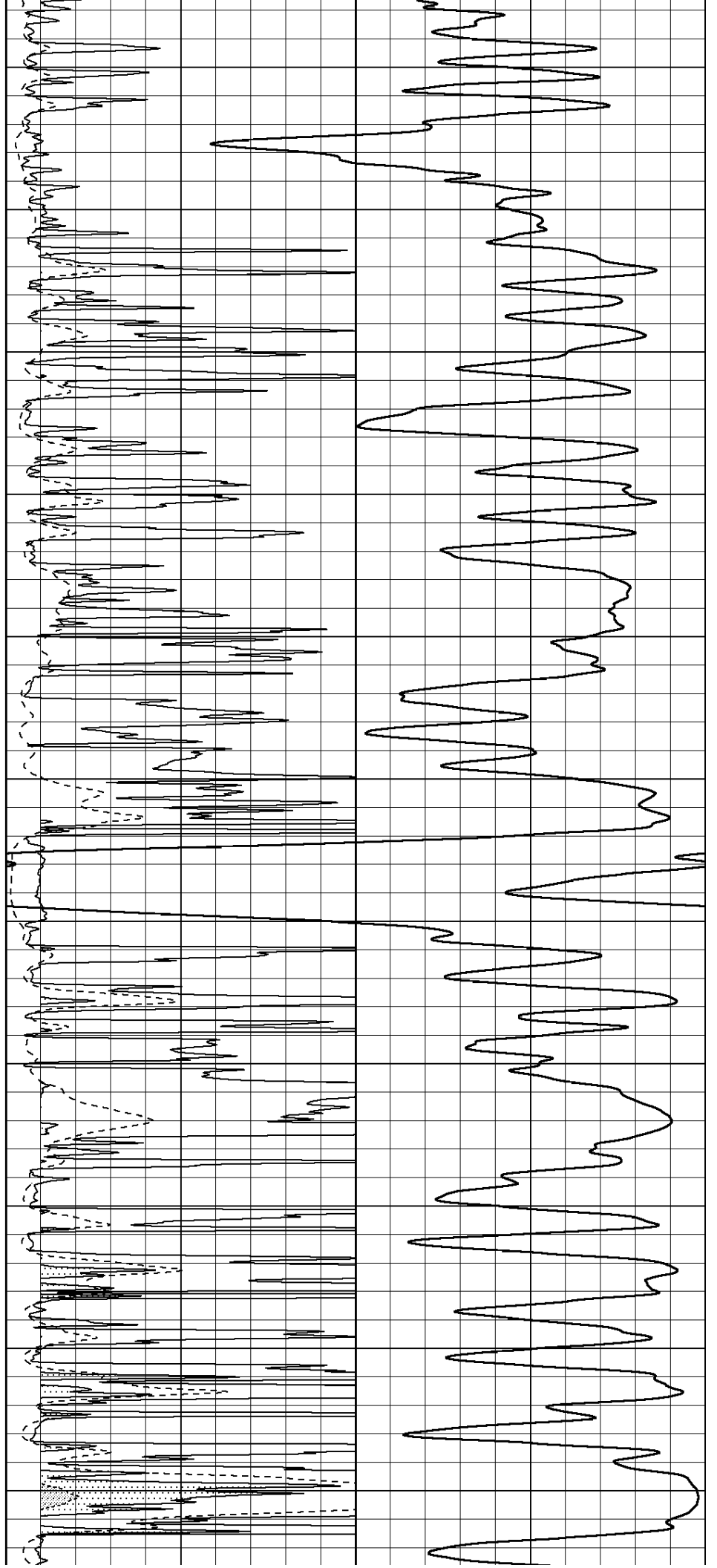
3500

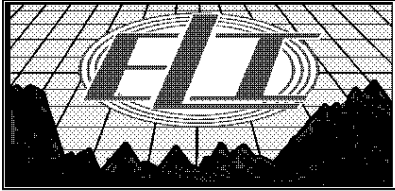
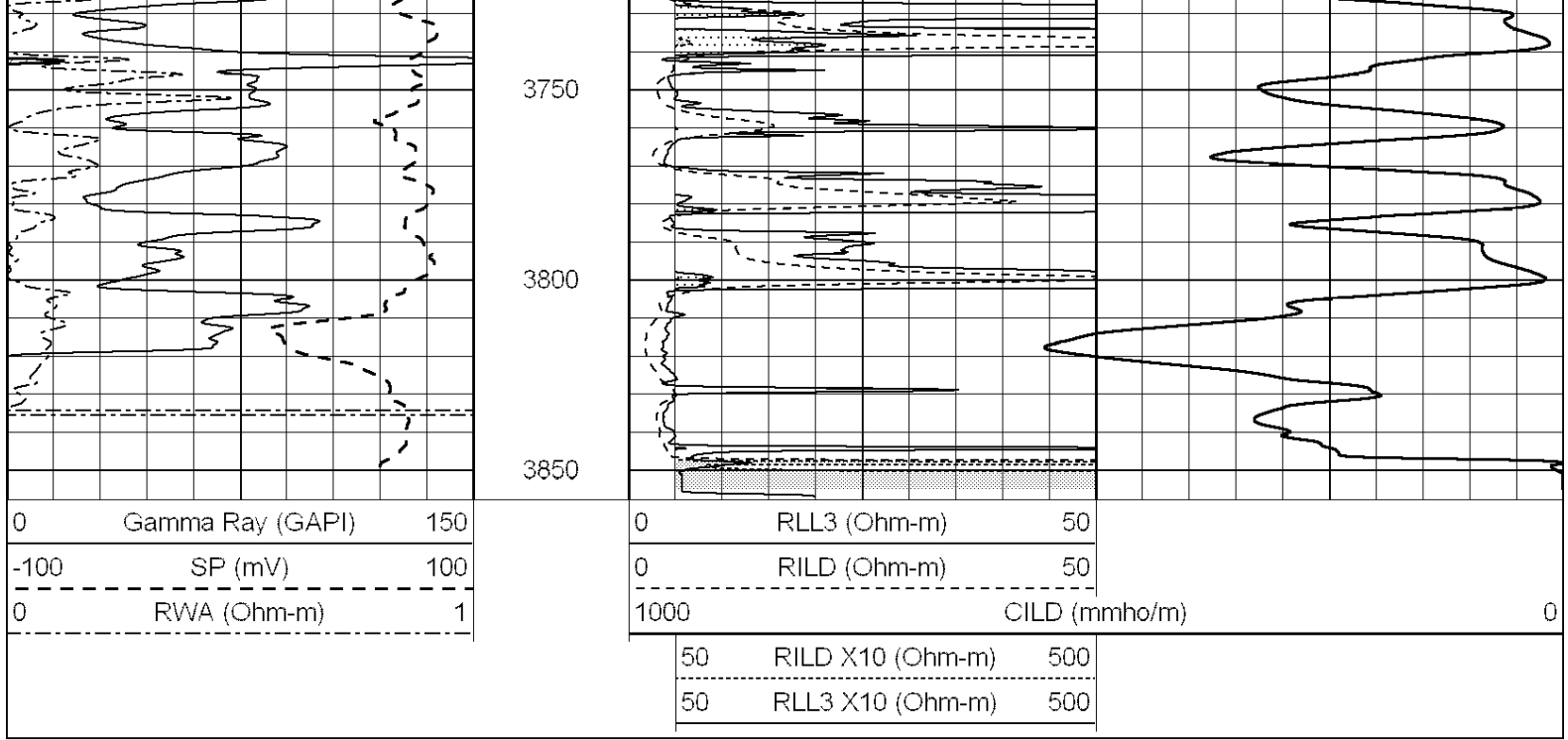
3550

3600

3650

3700

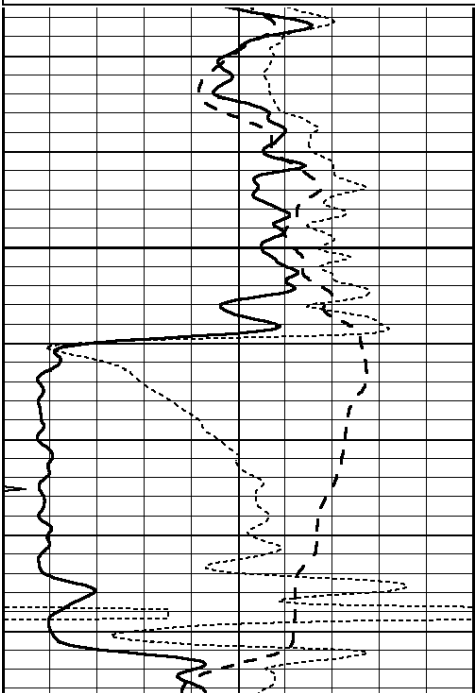




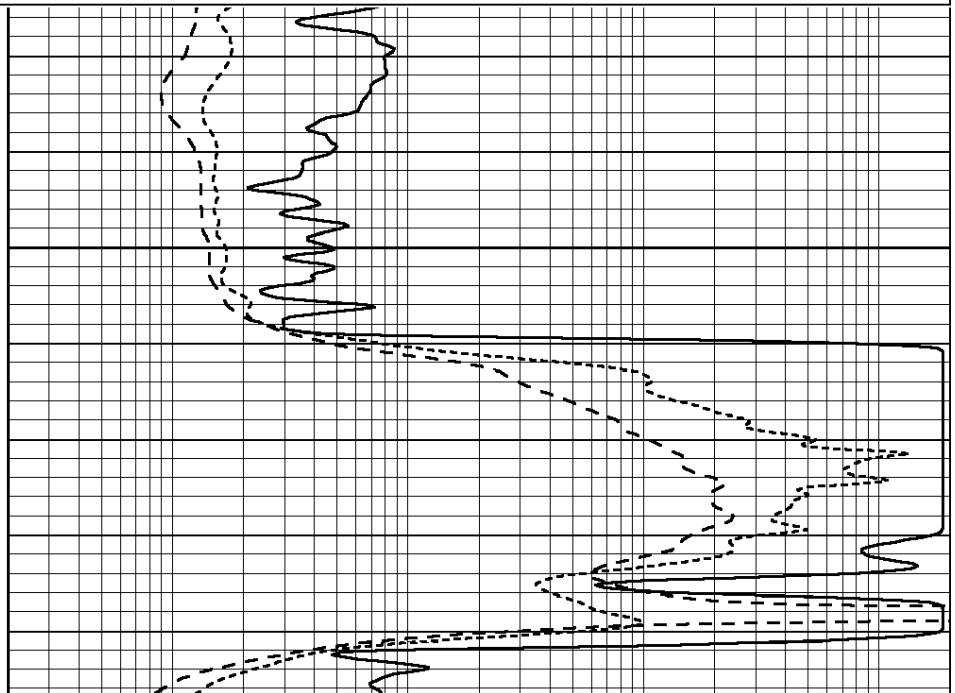
ANHYDRITE

Database File: 1332ddn.db
 Dataset Pathname: pass3.3
 Presentation Format: _dil
 Dataset Creation: Tue Dec 06 02:50:24 2016 by Calc SOC 120430
 Charted by: Depth in Feet scaled 1:240

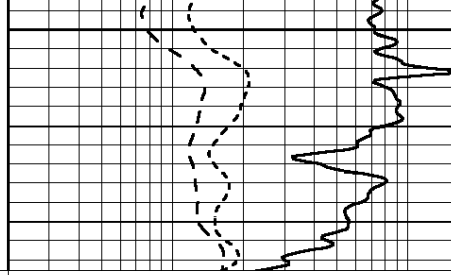
0	GAMMA RAY (GAPI)	150	0.2	SHALLOW GUARD (Ohm-m)	2000
-100	SP (mV)	100	0.2	DEEP INDUCTION (Ohm-m)	2000
-250	Rxo/Rt	50	0.2	MEDIUM INDUCTION (Ohm-m)	2000
0	MINMK	20			



2100

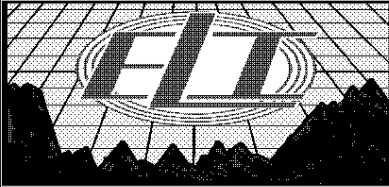


2150



0	GAMMA RAY (GAPI)	150
-100	SP (mV)	100
-250	Rxo/Rt	50
0	MINMK	20

0.2	SHALLOW GUARD (Ohm-m)	2000
0.2	DEEP INDUCTION (Ohm-m)	2000
0.2	MEDIUM INDUCTION (Ohm-m)	2000



MAIN SECTION

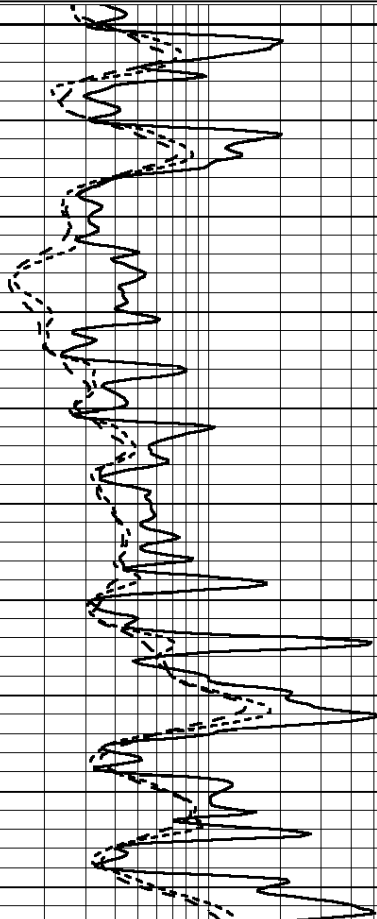
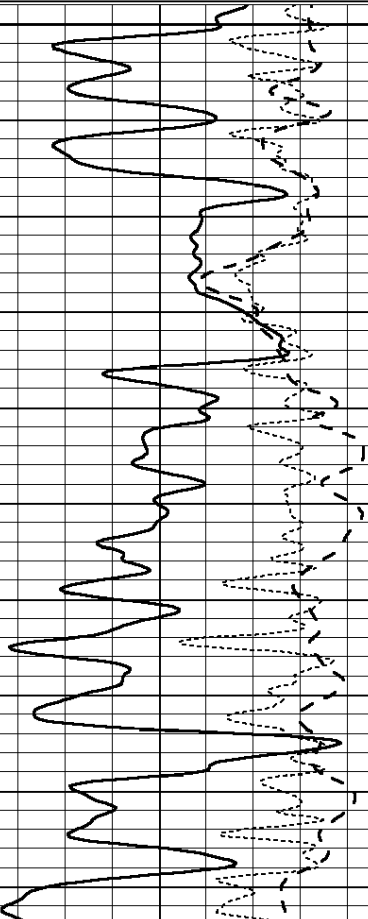
Database File: 1332ddn.db
 Dataset Pathname: pass3.2
 Presentation Format: _dil
 Dataset Creation: Tue Dec 06 02:48:56 2016 by Calc SOC 120430
 Charted by: Depth in Feet scaled 1:240

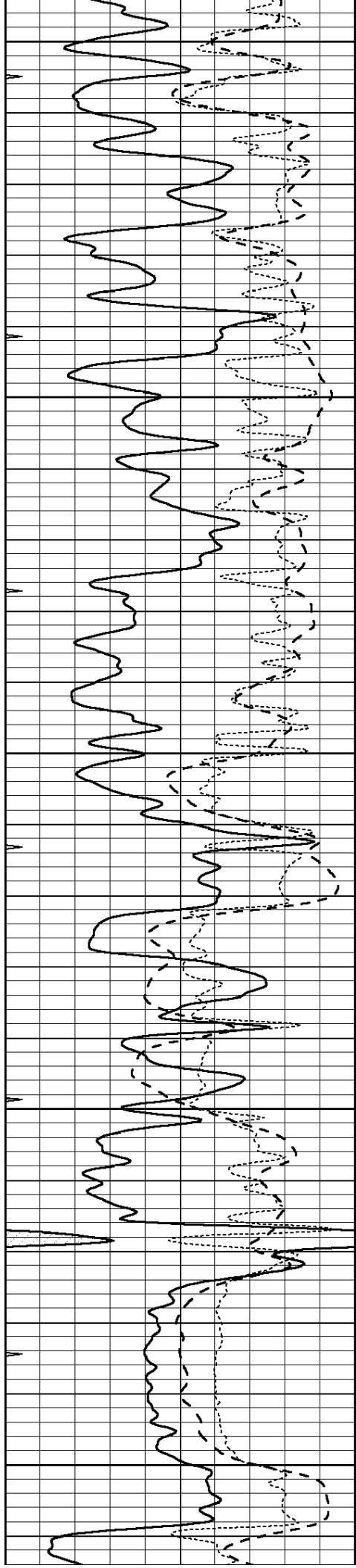
0	GAMMA RAY (GAPI)	150
-100	SP (mV)	100
-250	Rxo/Rt	50
0	MINMK	20

0.2	SHALLOW GUARD (Ohm-m)	2000
0.2	DEEP INDUCTION (Ohm-m)	2000
0.2	MEDIUM INDUCTION (Ohm-m)	2000

3200

3250





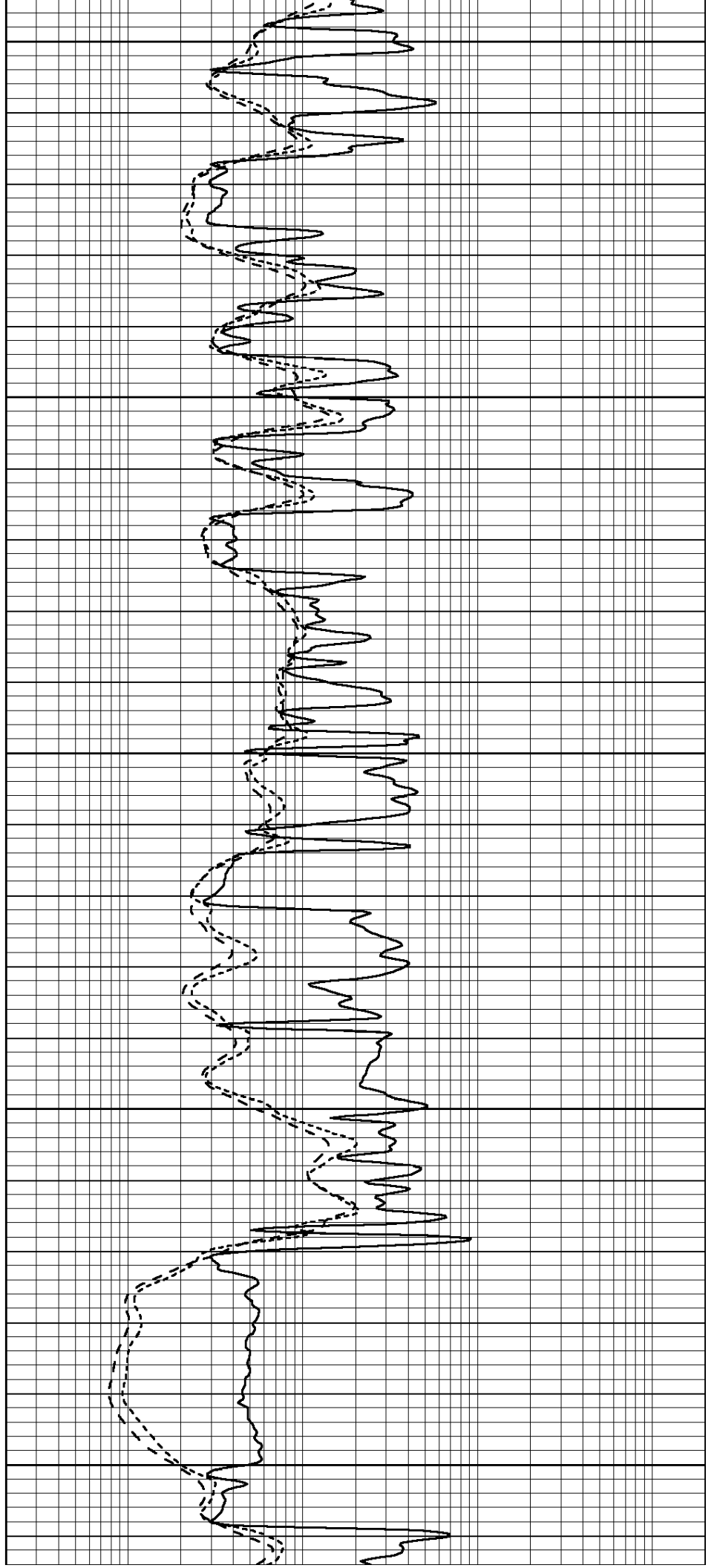
3300

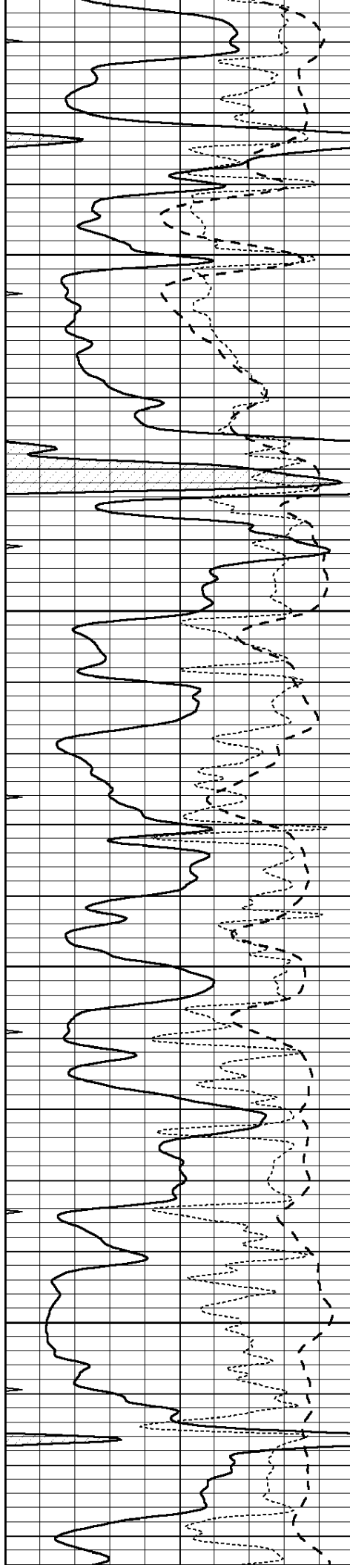
3350

3400

3450

3500



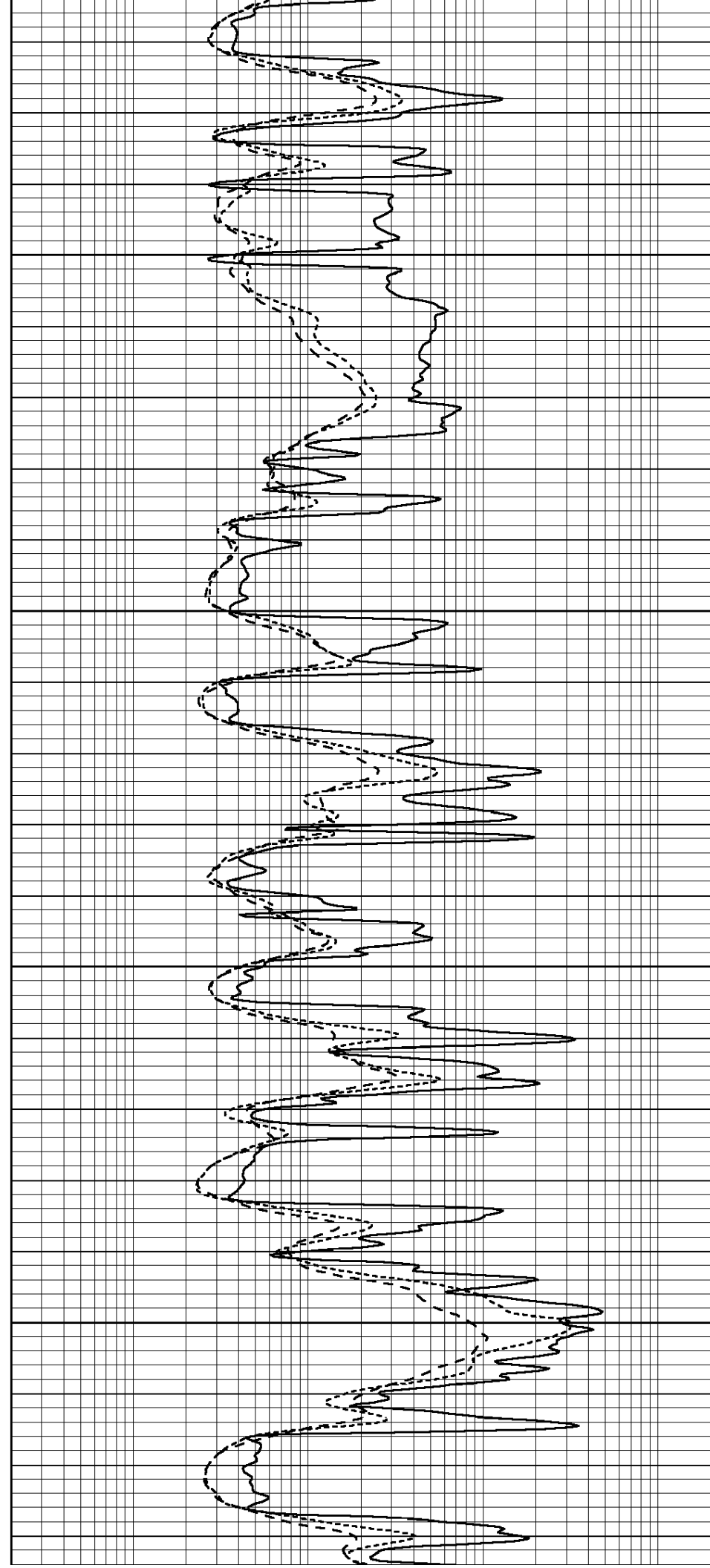


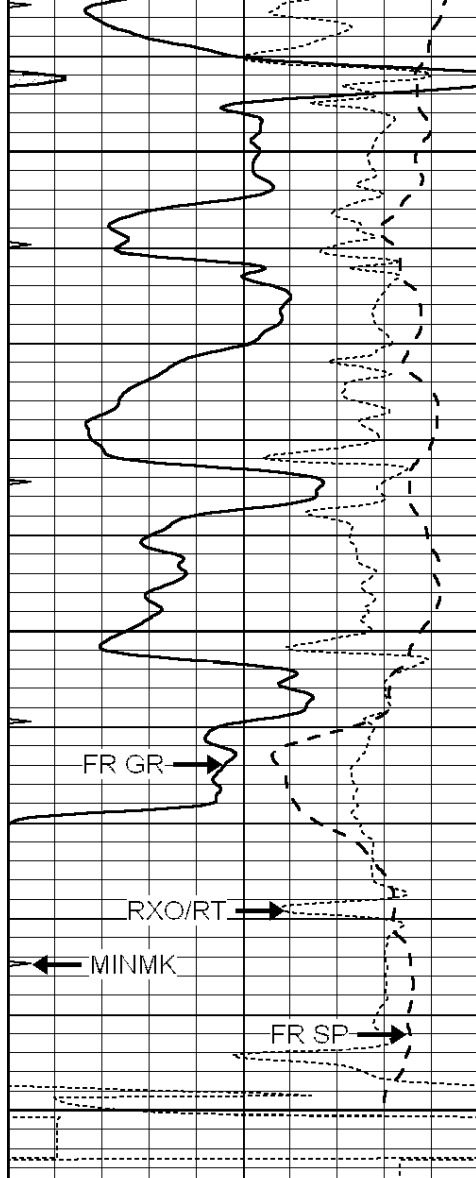
3550

3600

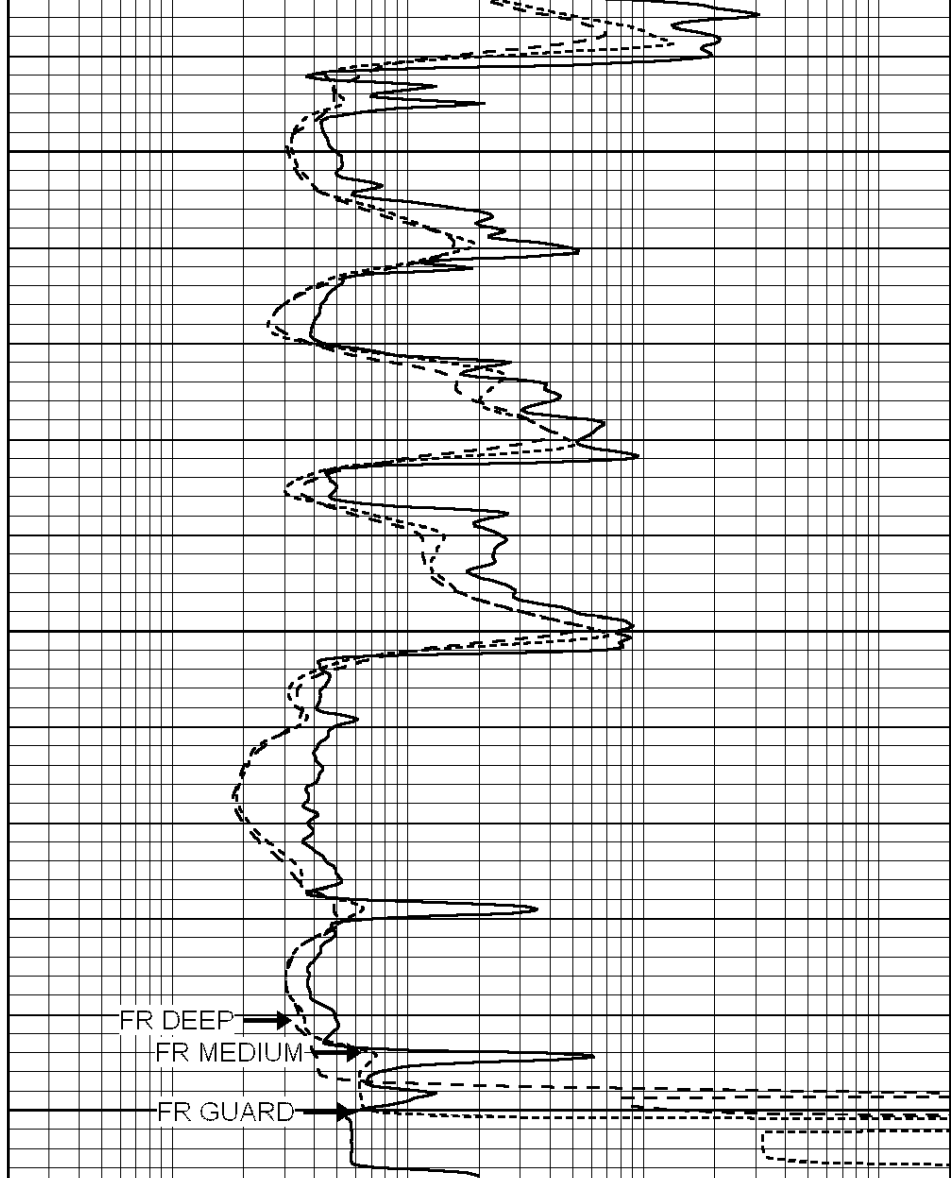
3650

3700



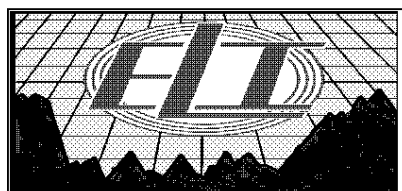


3750
3800
3850
LTD 3852



0	GAMMA RAY (GAPI)	150
-100	SP (mV)	100
-250	Rxo/Rt	50
0	MINMK	20

0.2	SHALLOW GUARD (Ohm-m)	2000
0.2	DEEP INDUCTION (Ohm-m)	2000
0.2	MEDIUM INDUCTION (Ohm-m)	2000

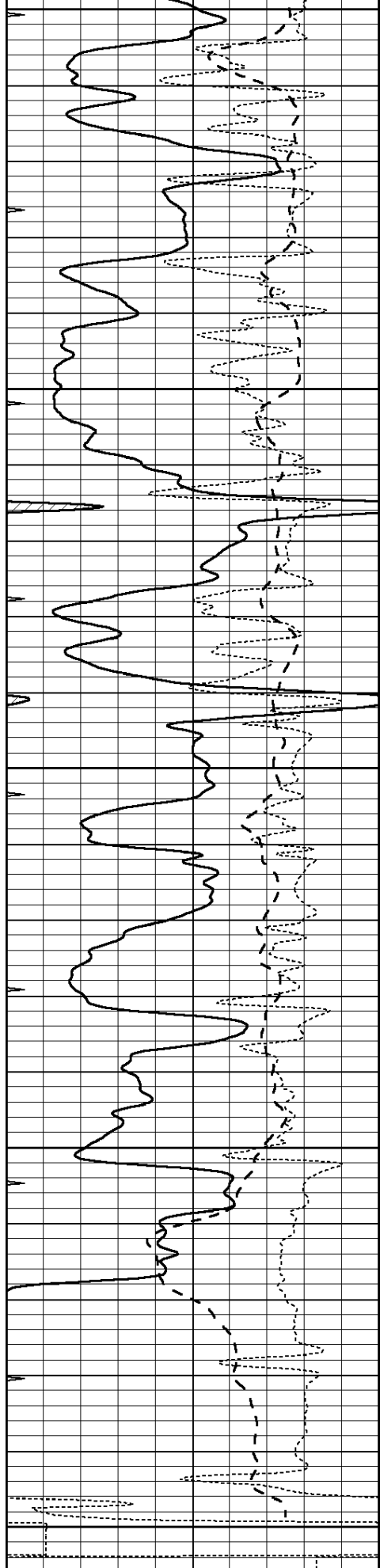


REPEAT SECTION

Database File: 1332ddn.db
 Dataset Pathname: pass2.3
 Presentation Format: _dil
 Dataset Creation: Tue Dec 06 01:43:12 2016 by Calc SOC 120430
 Charted by: Depth in Feet scaled 1:240

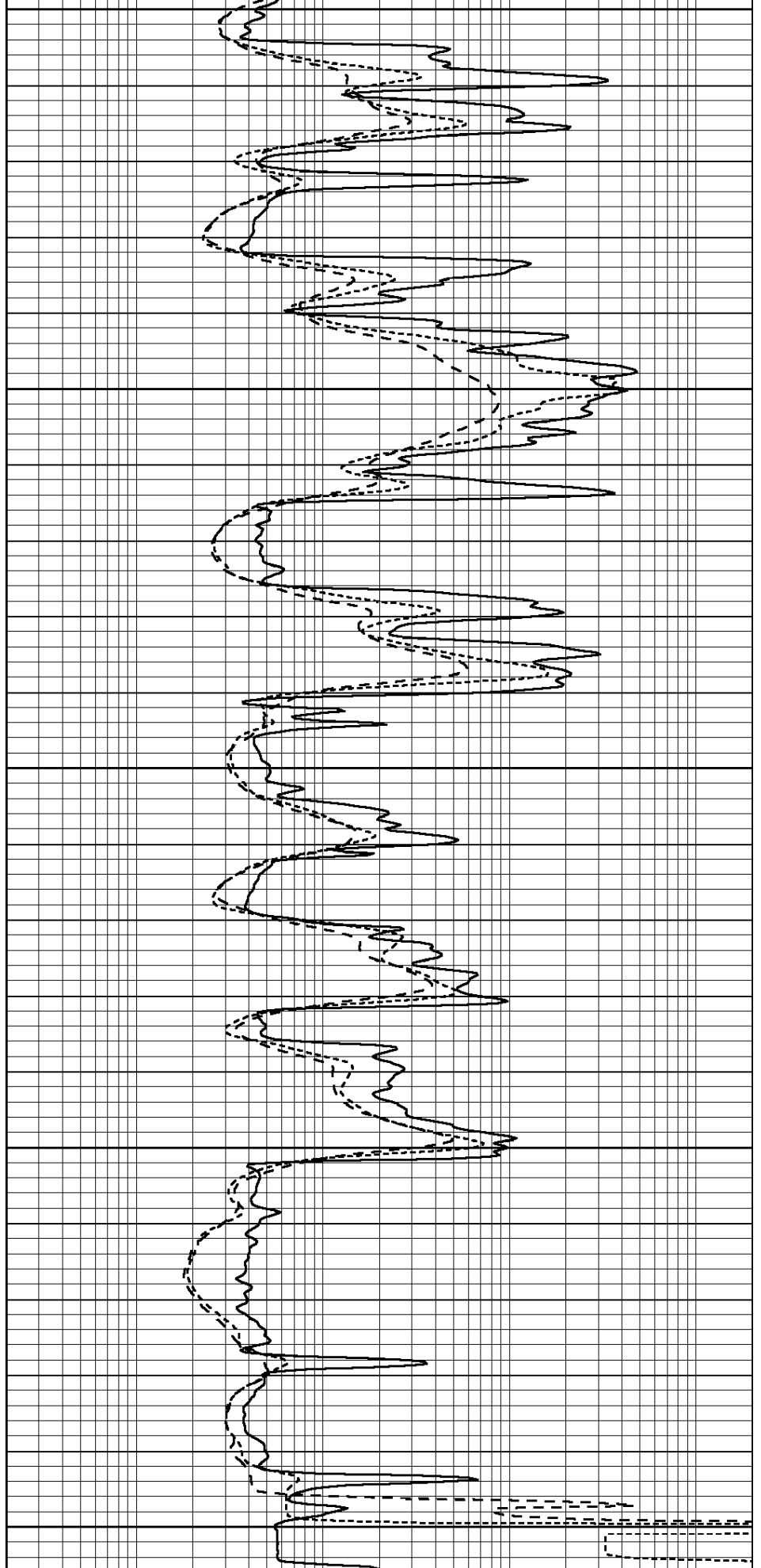
0	GAMMA RAY (GAPI)	150
-100	SP (mV)	100
-250	Rxo/Rt	50
0	MINMK	20

0.2	SHALLOW GUARD (Ohm-m)	2000
0.2	DEEP INDUCTION (Ohm-m)	2000
0.2	MEDIUM INDUCTION (Ohm-m)	2000



3650
3700
3750
3800
3850

0	GAMMA RAY (GAPI)	150
-100	SP (mV)	100
-250	Rxo/Rt	50



0.2	SHALLOW GUARD (Ohm-m)	2000
0.2	DEEP INDUCTION (Ohm-m)	2000
0.2	MEDIUM INDUCTION (Ohm-m)	2000

0	MINMK	20
---	-------	----

Calibration Report

Database File: 1332ddn.db
 Dataset Pathname: pass3.2
 Dataset Creation: Tue Dec 06 02:48:56 2016 by Calc SOC 120430

Dual Induction Calibration Report

Serial-Model: PROBE7-DILG
 Surface Cal Performed: Thu Nov 03 11:12:55 2016
 Downhole Cal Performed: Mon Jul 28 12:02:56 2008
 After Survey Verification Performed: Mon Jul 28 12:02:56 2008

Surface Calibration

Loop:	Readings			References			Results	
	Air	Loop		Air	Loop		m	b
Deep	-0.014	0.629	V	0.000	400.000	mmho/m	625.000	-12.000
Medium	0.039	0.728	V	0.000	464.000	mmho/m	675.000	-53.000
Internal:	Zero	Cal		Zero	Cal		m	b
Deep	0.011	0.610	V	0.000	400.000	mmho/m	667.135	-7.256
Medium	0.005	0.712	V	0.000	464.000	mmho/m	655.677	-3.102

Downhole Calibration

	Readings			References			Results	
	Zero	Cal		Zero	Cal		m'	b'
Deep	0.000	0.000	mmho/m	14.508	388.384	mmho/m	1.000	0.000
Medium	0.000	0.000	mmho/m	166.367	504.400	mmho/m	1.000	0.000
LL3		7.500	V		1400.000	Ohm-m		
		0.000	V		20.000	Ohm-m		
		-7.200	V		4000.000	mmho-m		

After Survey Verification

	Readings			Targets			Results	
	Zero	Cal		Zero	Cal		m'	b'
Deep	0.000	0.000	mmho/m	0.000	0.000	mmho/m	0.000	0.000
Medium	0.000	0.000	mmho/m	0.000	0.000	mmho/m	0.000	0.000
LL3		1.000	Ohm-m		1.000	Ohm-m		
		0.000	Ohm-m		0.000	Ohm-m		
		1.000	mmho-m		1.000	mmho-m		

Litho Density Calibration Report

Serial: 004N Model: PRB

Master Calibration

Performed Fri May 30 11:01:00 2014

	Background	Magnesium	Aluminum	Sandstone	
Window 1	1378.8	10804.6	3492.0	12453.4	cps
Window 2	1262.4	9313.5	3076.7	10594.7	cps
Window 3	1077.6	5668.7	2076.0	6314.8	cps
Window 4	306.4	313.0	306.4	315.6	cps
Long Space	0.0	8051.0	1814.3	9332.3	cps
Short Space	1.9	1706.1	1146.0	1707.6	cps
Rho		1.7100	2.5900	1.3800	g/cc
Pe		0.0000	2.5700	1.5500	

Rib Angle : 45.0 Rib Slope : 1.002 Density/Spine Ratio : 0.571
 Spine Angle : 75.0 Spine Slope : 3.745 Spine Intercept : -18.9

Before Survey Verification

Performed Wed Dec 31 18:00:00 1969

Window 1	0.0	0.0	0.0	0.0	cps
Window 2	0.0	0.0	0.0	0.0	cps
Window 3	0.0	0.0	0.0	0.0	cps
Window 4	0.0	0.0	0.0	0.0	cps
Long Space	0.0	0.0	0.0	0.0	cps
Short Space	0.0	0.0	0.0	0.0	cps
Measured Rho		0.0000	0.0000	0.0000	g/cc
Measured Correction		0.0000	0.0000	0.0000	g/cc
Measured Pe			0.0000	0.0000	

After Survey Verification

Performed Wed Dec 31 18:00:00 1969

Window 1	0.0	0.0	0.0	0.0	cps
Window 2	0.0	0.0	0.0	0.0	cps
Window 3	0.0	0.0	0.0	0.0	cps
Window 4	0.0	0.0	0.0	0.0	cps
Long Space	0.0	0.0	0.0	0.0	cps
Short Space	0.0	0.0	0.0	0.0	cps
Measured Rho		0.0000	0.0000	0.0000	g/cc
Measured Correction		0.0000	0.0000	0.0000	g/cc
Measured Pe			0.0000	0.0000	

Compensated Neutron Calibration Report

Serial Number: 070808
 Tool Model: Probe

PRE-SURVEY VERIFICATION

Detector	Readings	Measured	Target
Short Space	cps		
Long Space	cps	pu	pu

POST-SURVEY VERIFICATION

Detector	Readings	Measured	Target
Short Space	cps		
Long Space	cps	pu	pu

Gamma Ray Calibration Report

Serial Number: 070558
 Tool Model: OPEN_GR
 Performed: Mon Aug 22 01:00:15 2016

Calibrator Value: 1.0 GAPI

Background Reading: 0.0 cps
 Calibrator Reading: 1.0 cps

Sensitivity: 0.2800 GAPI/cps