



**COMPLETION
& PRODUCTION
SERVICES CO.**

**MICRO
LOG**

Company TRANS PACIFIC OIL CORPORATION
Well ZILLINGER "A" UNIT #1-19
Field WILDCAT
County ROOKS
State KANSAS

Company TRANS PACIFIC OIL CORPORATION
Well ZILLINGER "A" UNIT #1-19
Field WILDCAT
County ROOKS State KANSAS

Location: API # : 15-163-24275-0000
2272' FNL & 1268' FEL
SEC 19 TWP 6S RGE 18W
Permanent Datum GROUND LEVEL Elevation 2136
Log Measured From KELLY BUSHING 5' A.G.L.
Drilling Measured From KELLY BUSHING
Elevation
K.B. 2141
D.F. 2139
G.L. 2136

Date	3/15/15		
Run Number	TWO		
Depth Driller	3922		
Depth Logger	3924		
Bottom Logged Interval	3902		
Top Log Interval	3100		
Casing Driller	8 5/8" @ 218		
Casing Logger	218		
Bit Size	7 7/8"		
Type Fluid in Hole	CHEMICAL MUD	CHLORIDES 2000 PPM	
Density / Viscosity	9.5/57		
pH / Fluid Loss	10.5/6.8		
Source of Sample	FLOWLINE		
Rm @ Meas. Temp	1.4 @ 67F		
Rmt @ Meas. Temp	1.05 @ 67F		
Rmc @ Meas. Temp	1.68 @ 67F		
Source of Rmf / Rmc	MEASUREMENT		
Rm @ BHT	.81 @ 115F		
Time Circulation Stopped	2 HOURS		
Time Logger on Bottom			
Maximum Recorded Temperature	115F		
Equipment Number	4010		
Location	HAYS, KANSAS		
Recorded By	JASON CAPPELLUCCI		
Witnessed By	ALEX CHAPIN		

<<< Fold Here >>>

All interpretations are opinions based on inferences from electrical or other measurements and we cannot and do not guarantee the accuracy or correctness of any interpretation, and we shall not, except in the case of gross or willful negligence on our part, be liable or responsible for any loss, costs, damages, or expenses incurred or sustained by anyone resulting from any interpretation made by any of our officers, agents or employees. These interpretations are also subject to our general terms and conditions set out in our current Price Schedule.

Comments

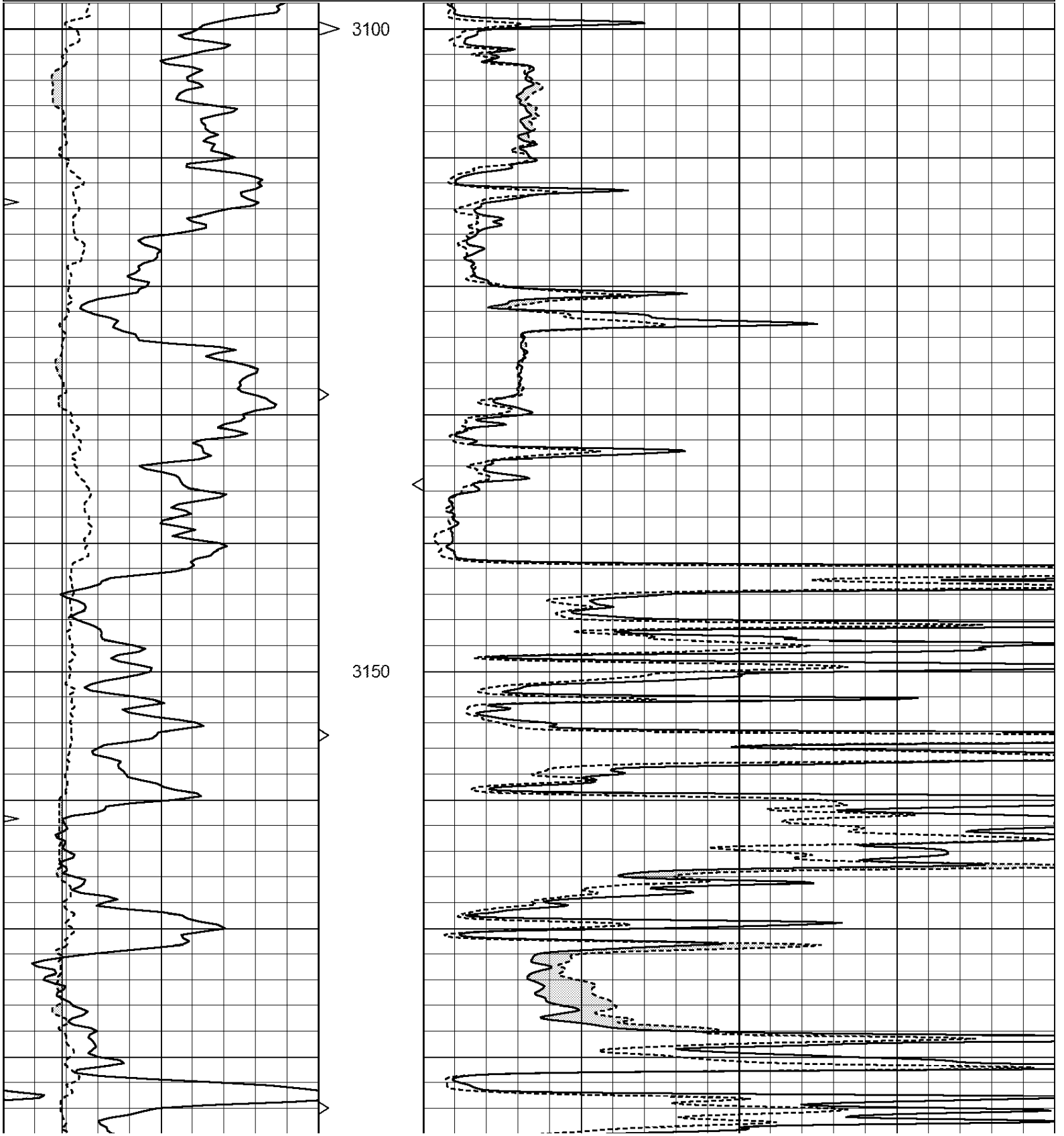
THANK YOU FOR USING NABORS, HAYS, KS. (785) 628-6395
DIRECTIONS:
STOCKTON, KS. - 6 NORTH TO E. RD. - 4 3/4 WEST - NORTH INTO

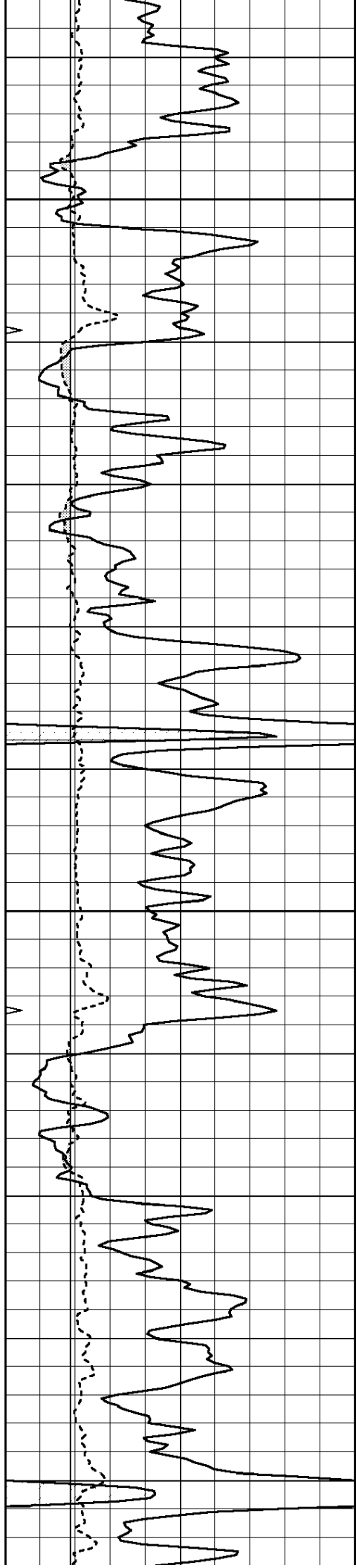


HIGH RESOLUTION

Database File: 26545pe.db
 Dataset Pathname: pass6.2
 Presentation Format: _micro
 Dataset Creation: Mon Mar 16 00:58:32 2015 by Calc Open-Cased 090629
 Charted by: Depth in Feet scaled 1:120

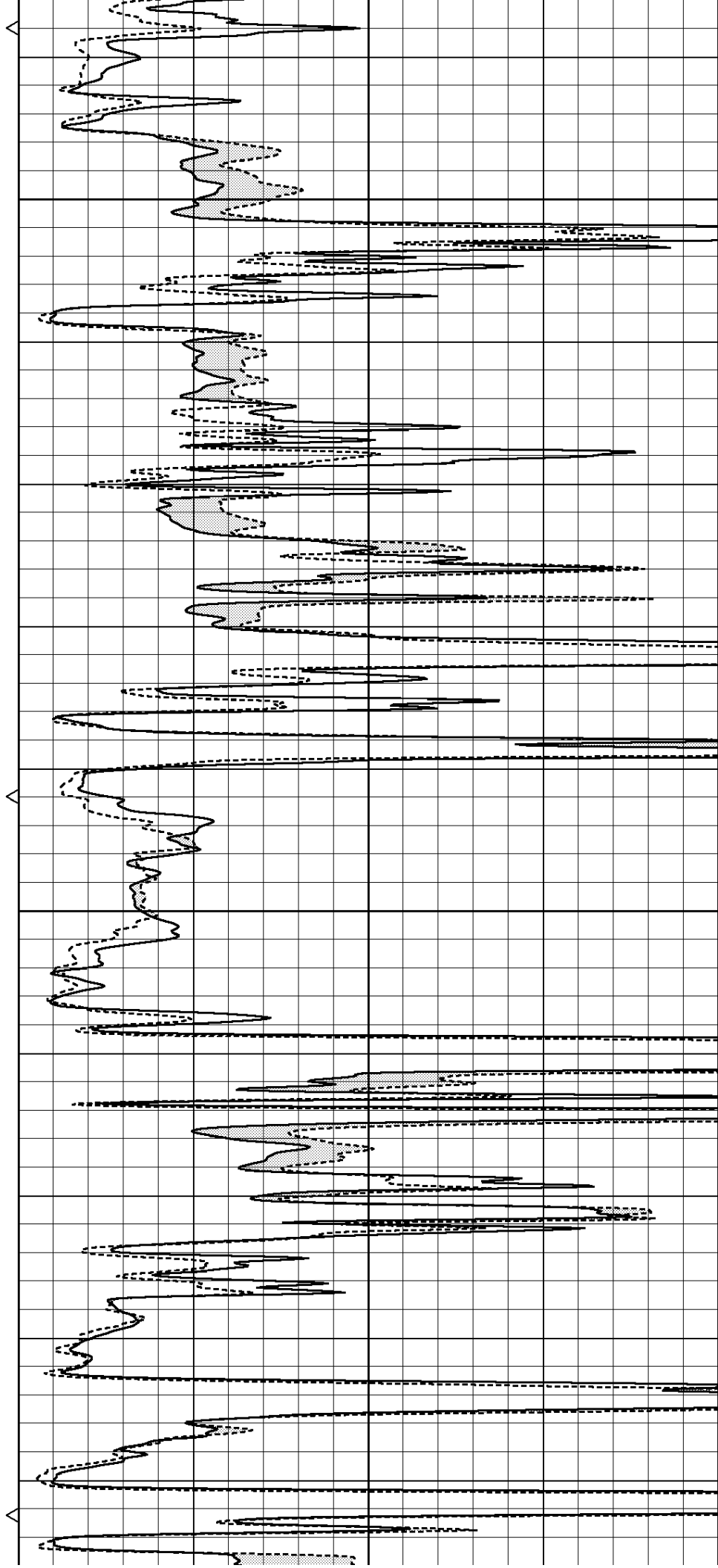
0	GAMMA RAY (GAPI)	150	ABHV	0	MEL1.5 (Ohm-m)	40
6	CALIPER (in)	16	10 (ft3)	0	MEL2.0 (Ohm-m)	40
0	MINMK	20	TBHV			
			0 (ft3)	10		

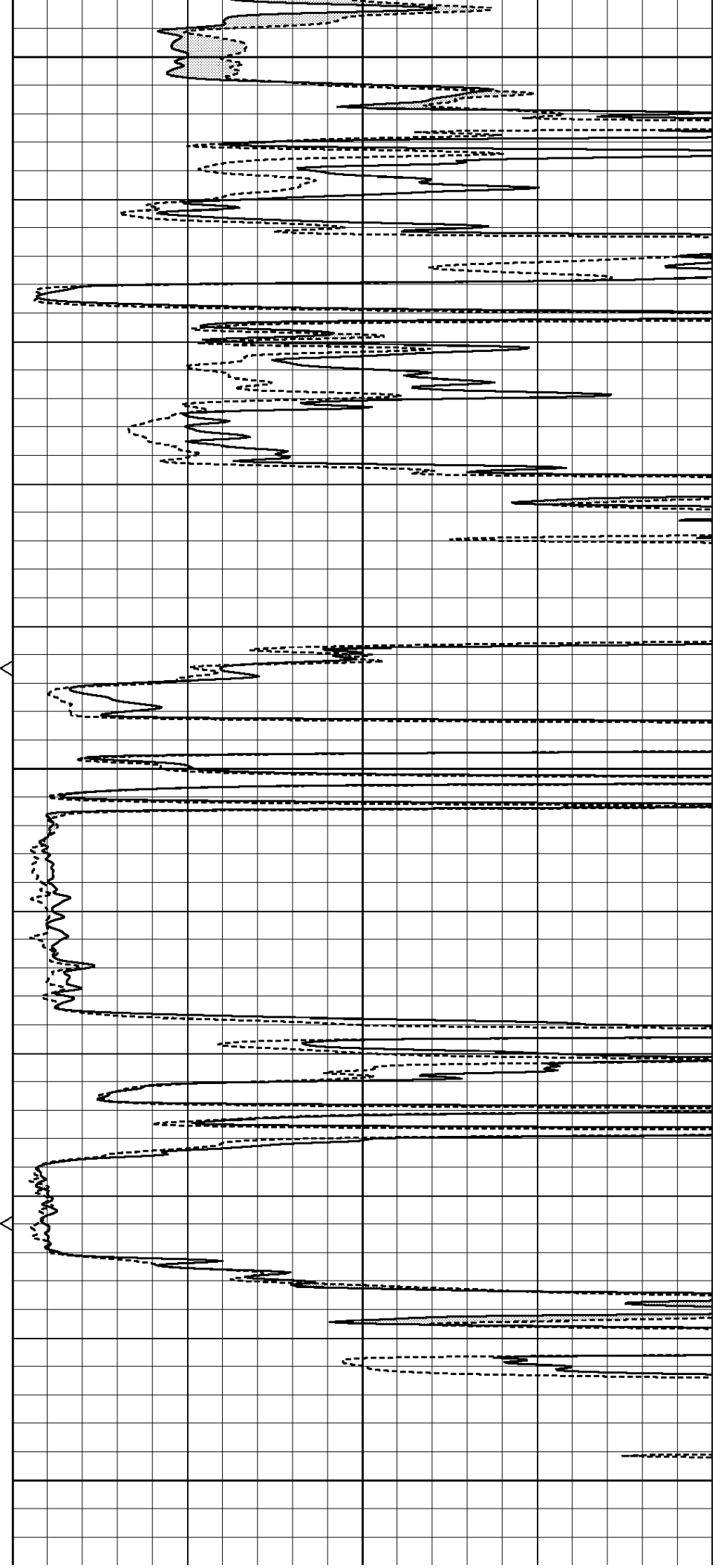
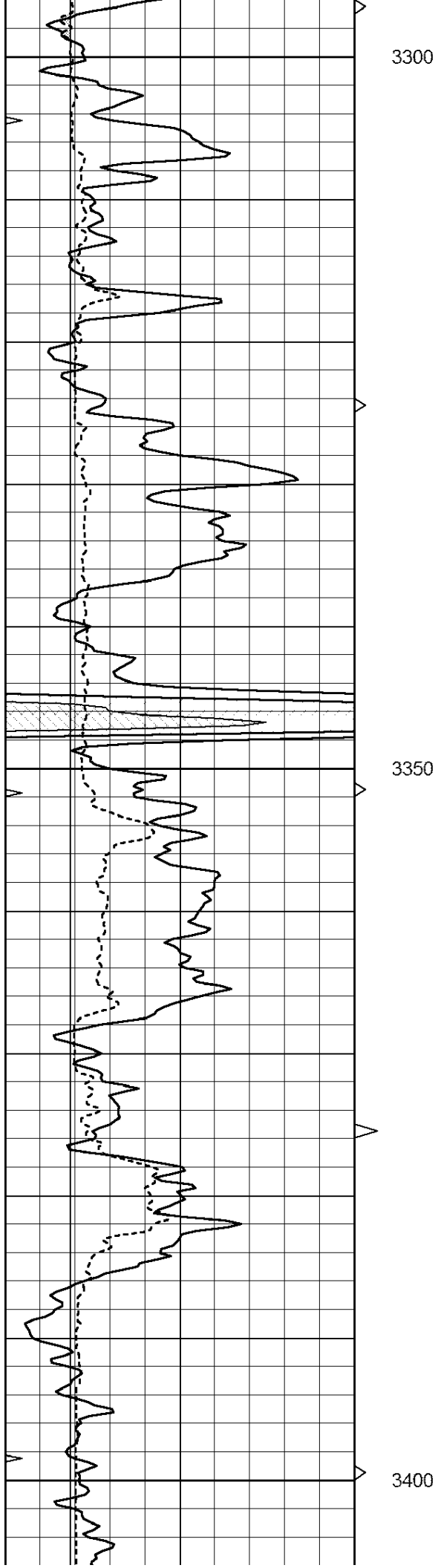


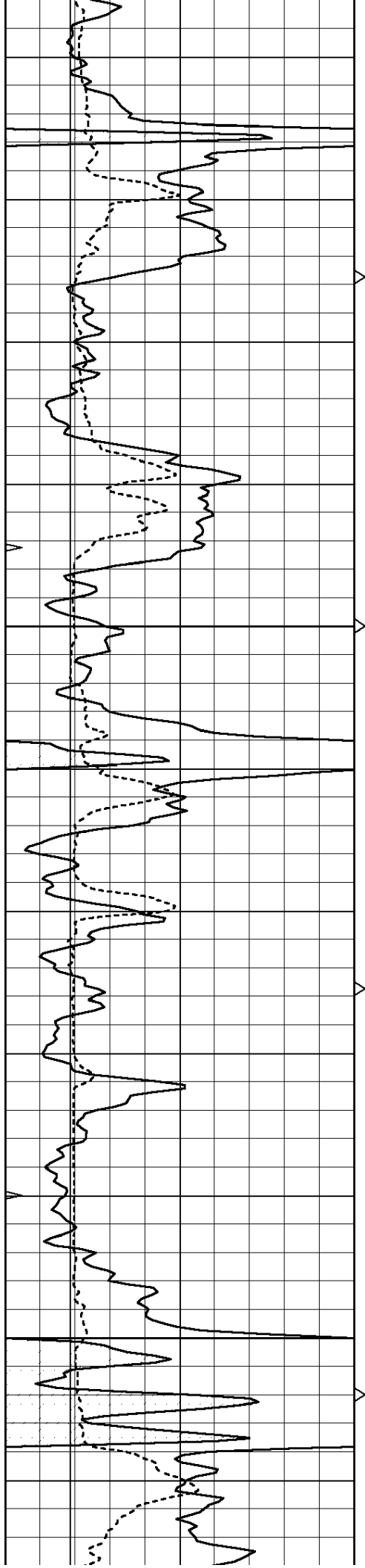


3200

3250

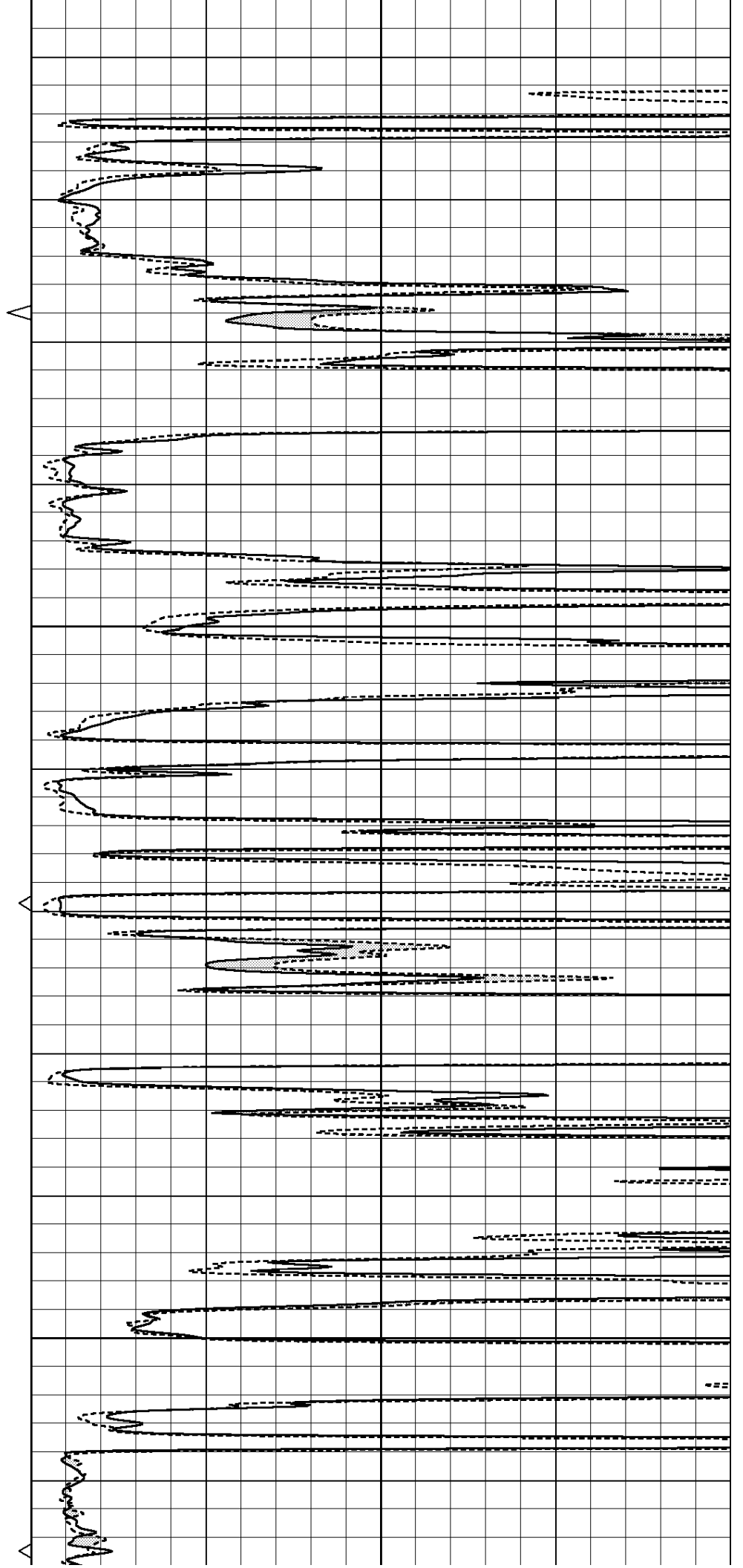


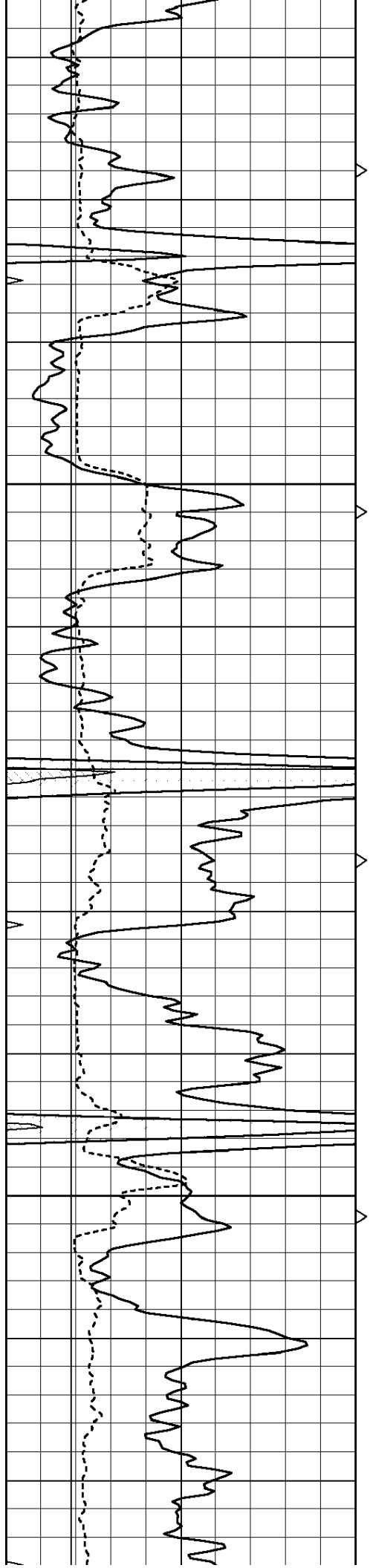




3450

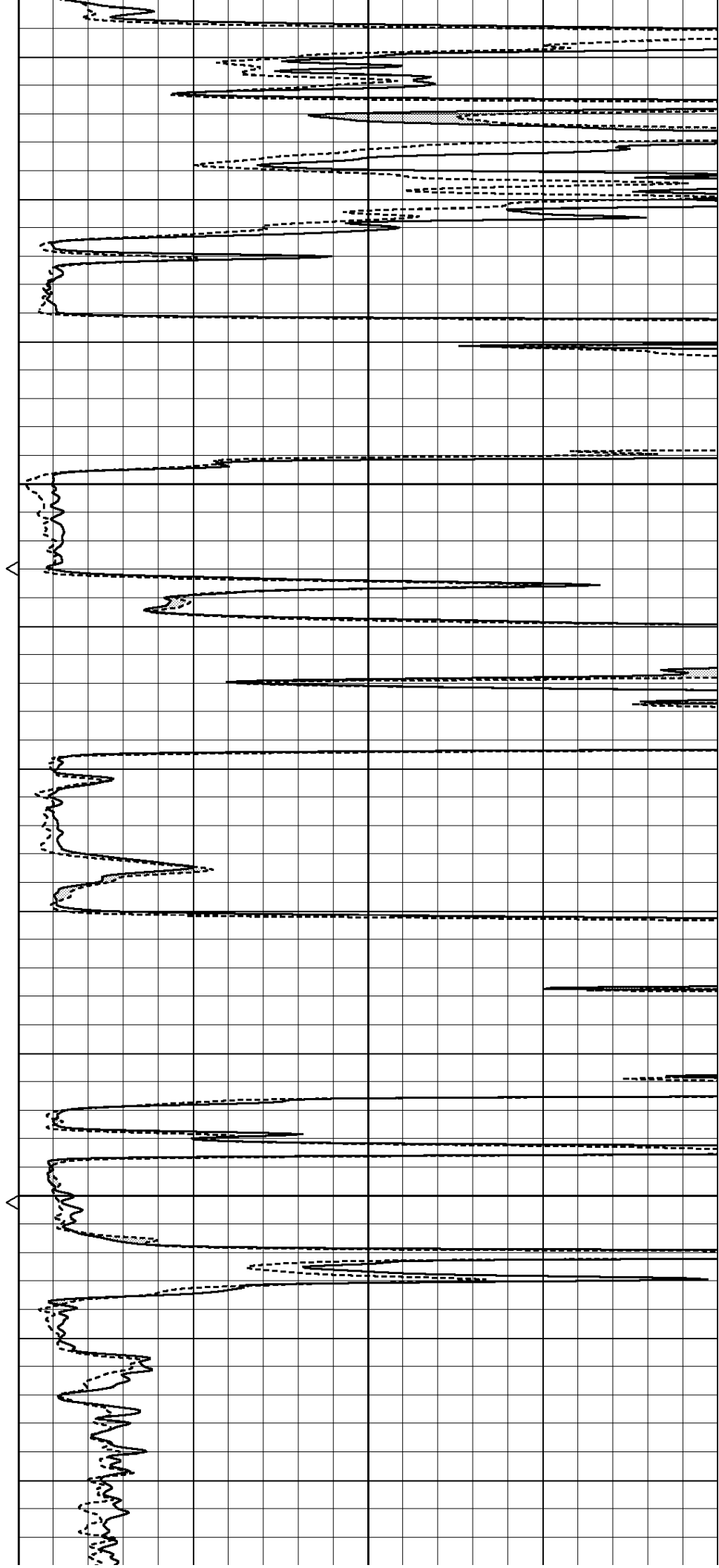
3500

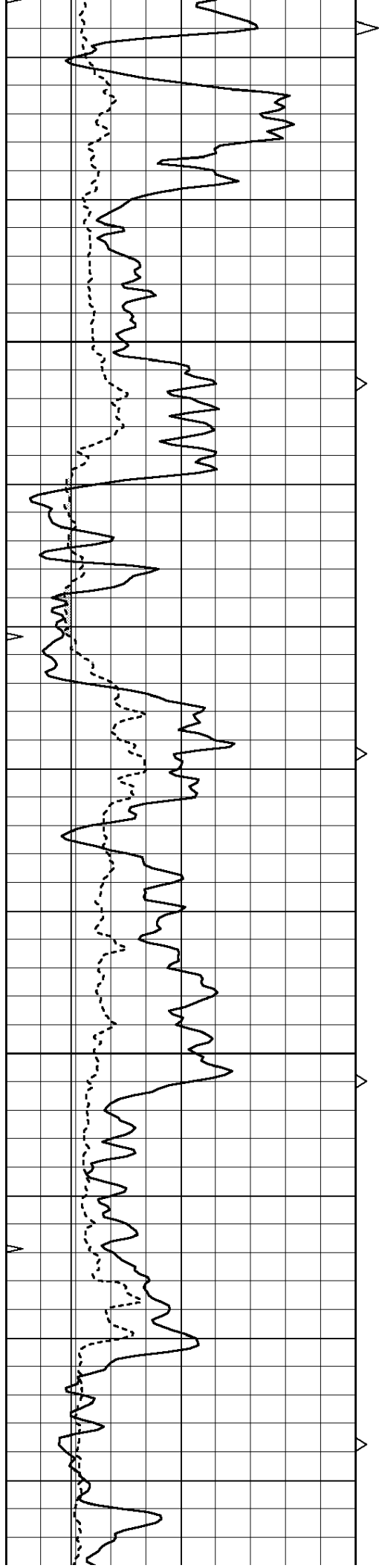




3550

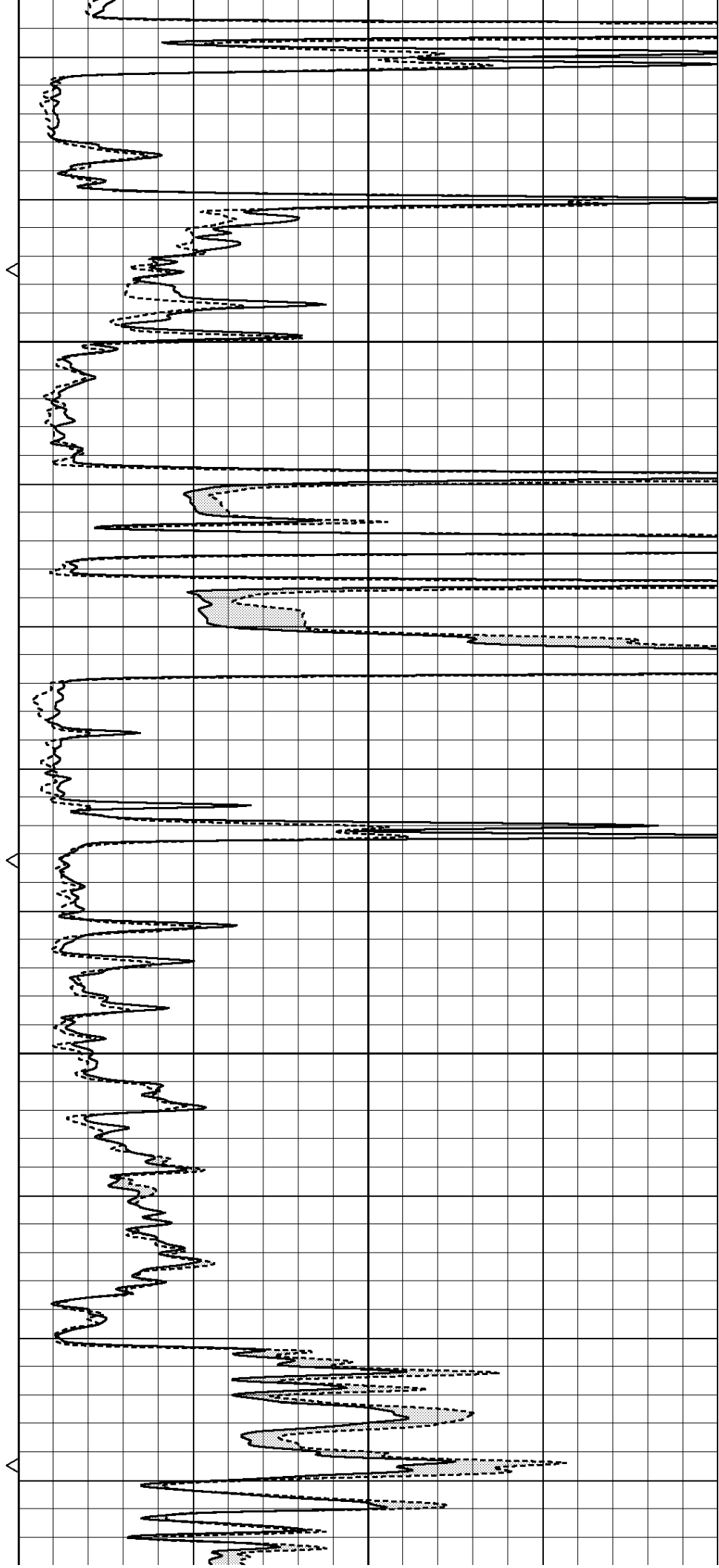
3600

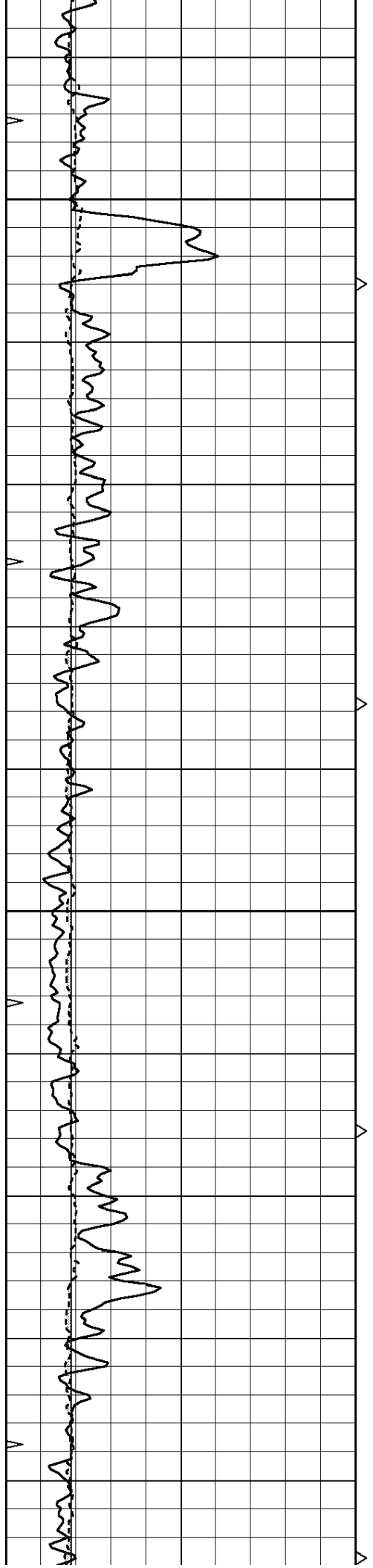




3650

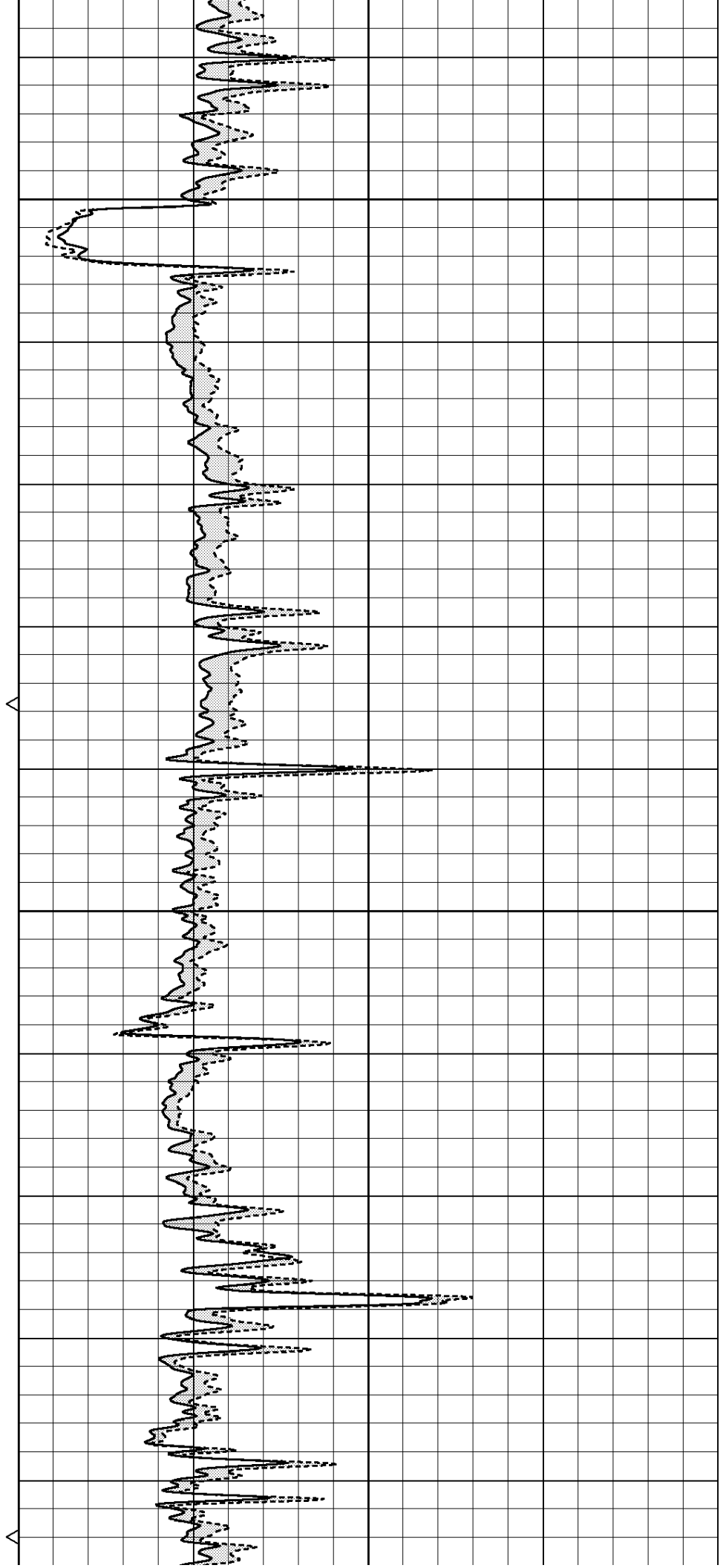
3700

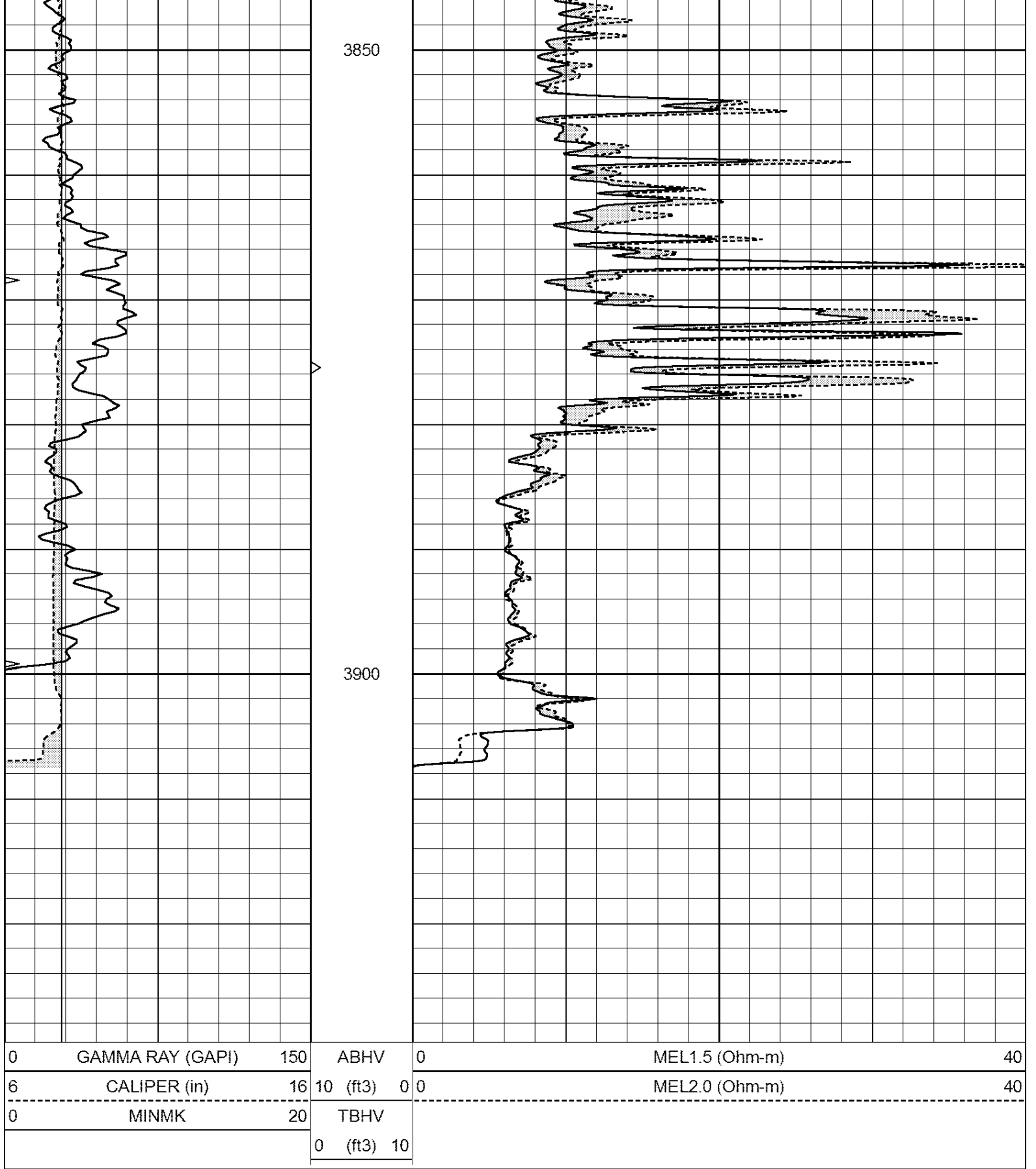




3750

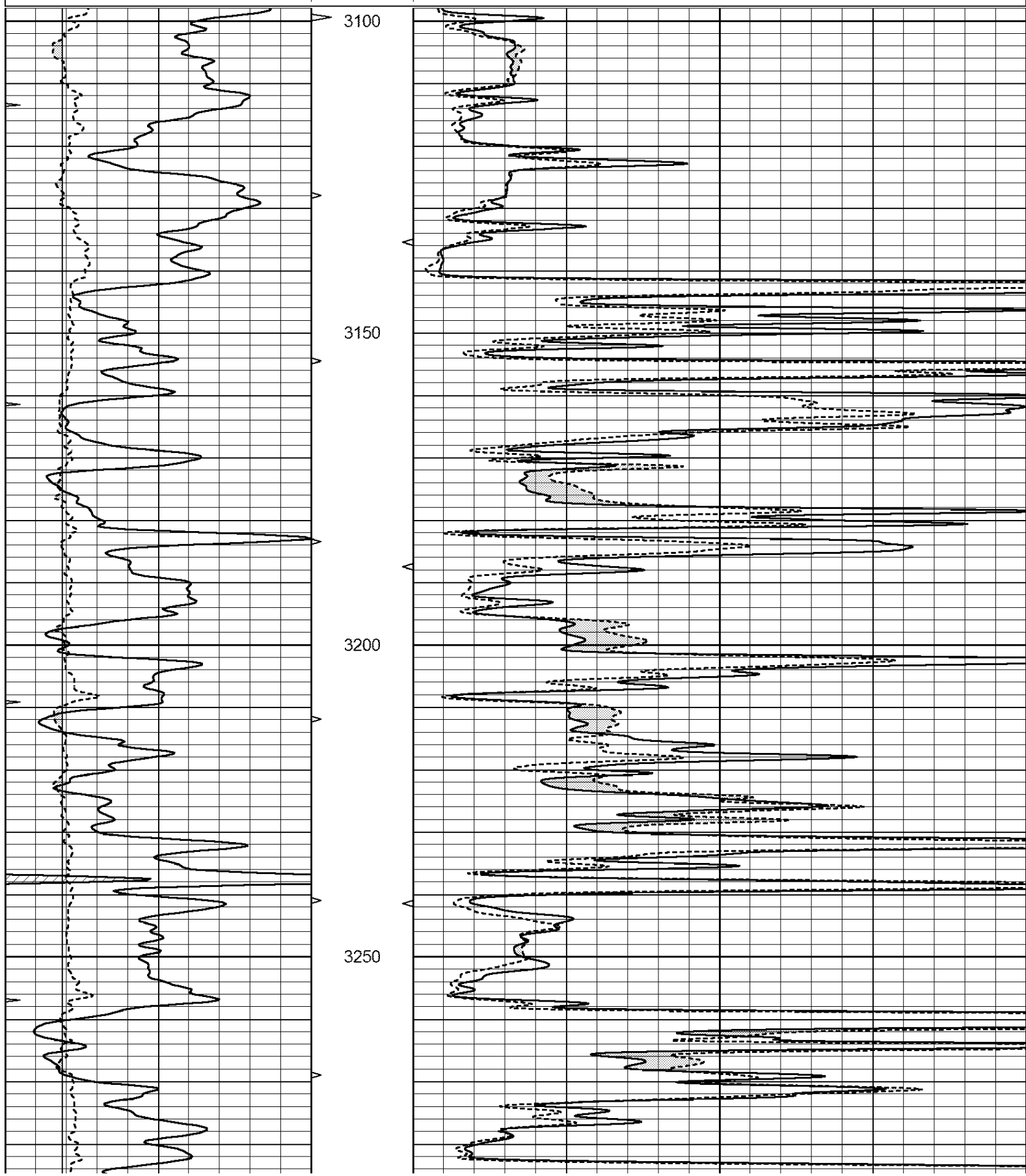
3800

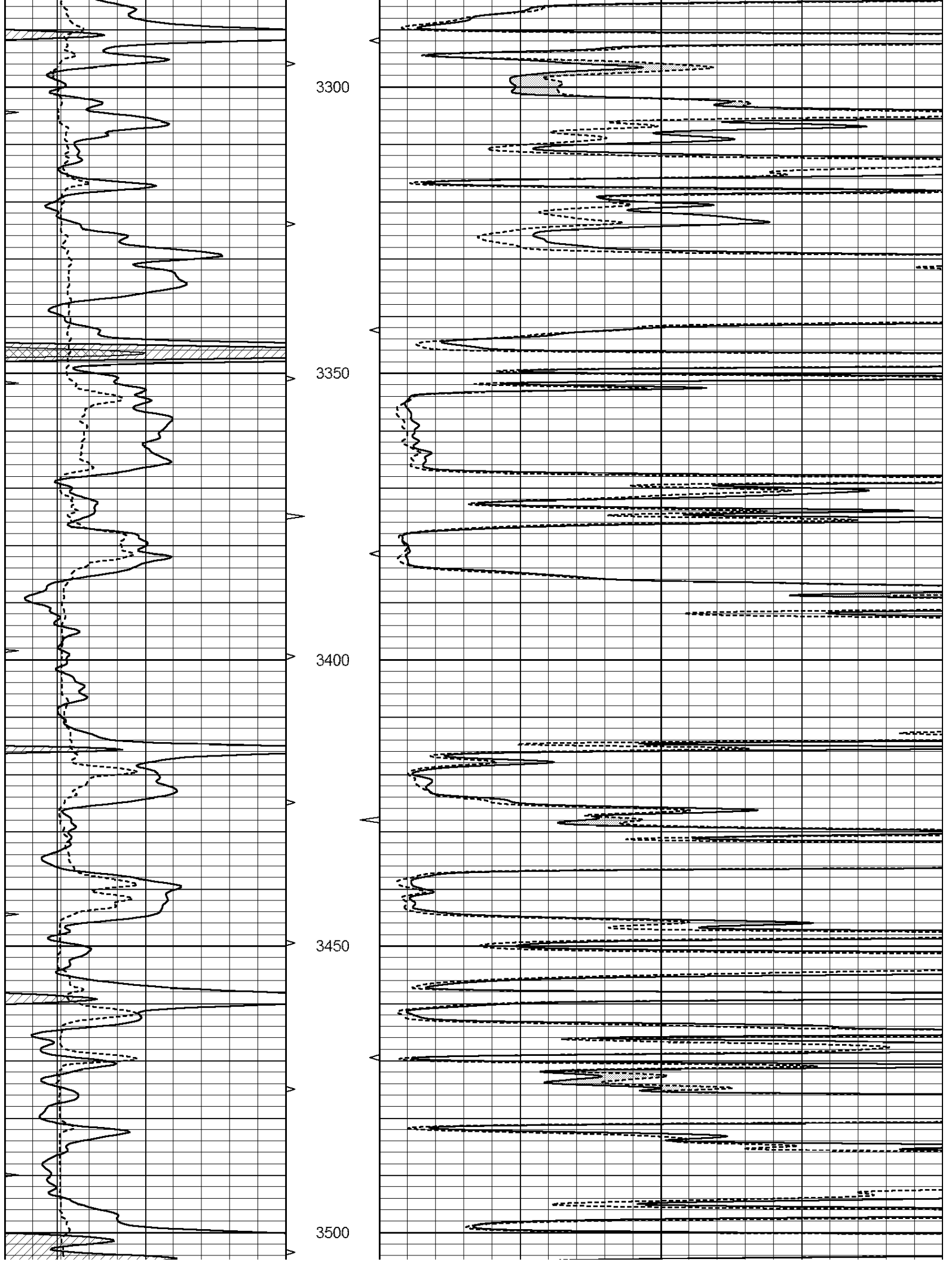


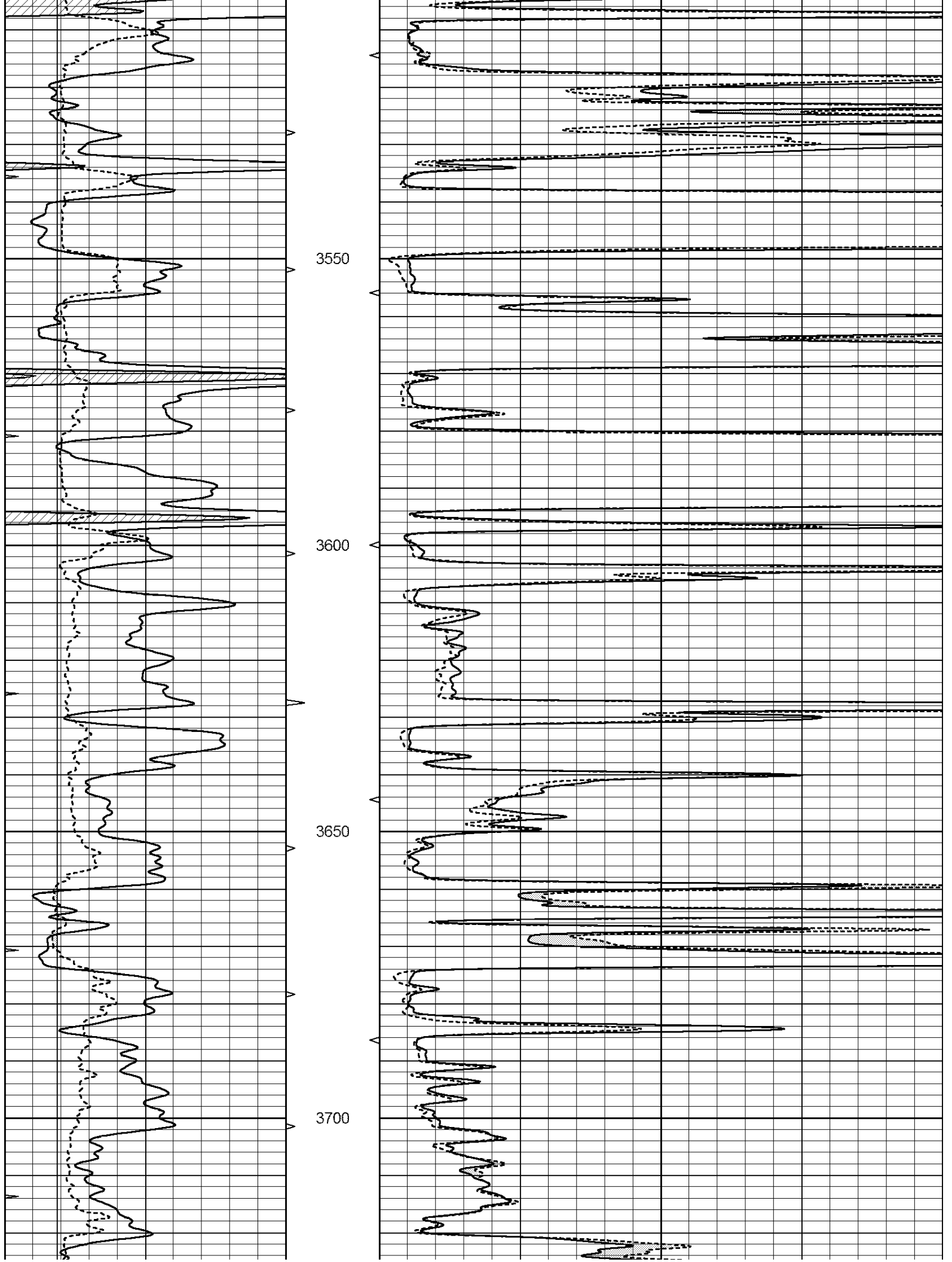


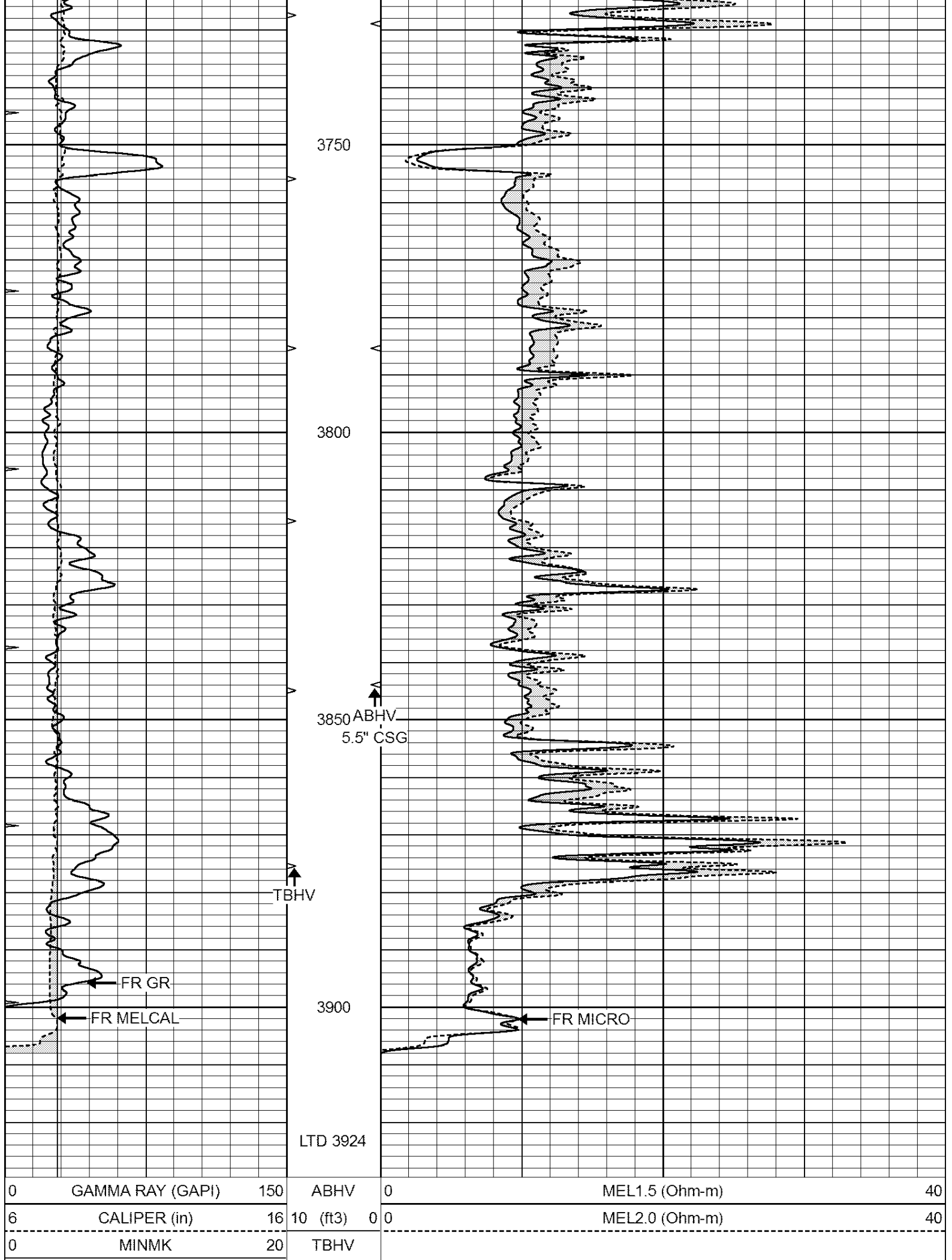
MAIN SECTION

0	GAMMA RAY (GAPI)	150	ABHV	0	MEL1.5 (Ohm-m)	40
6	CALIPER (in)	16	10 (ft3)	0 0	MEL2.0 (Ohm-m)	40
0	MINMK	20	TBHV			
			0 (ft3)	10		









3750

3800

3850 ABHV
5.5" CSG

TBHV

3900

FR MICRO

LTD 3924

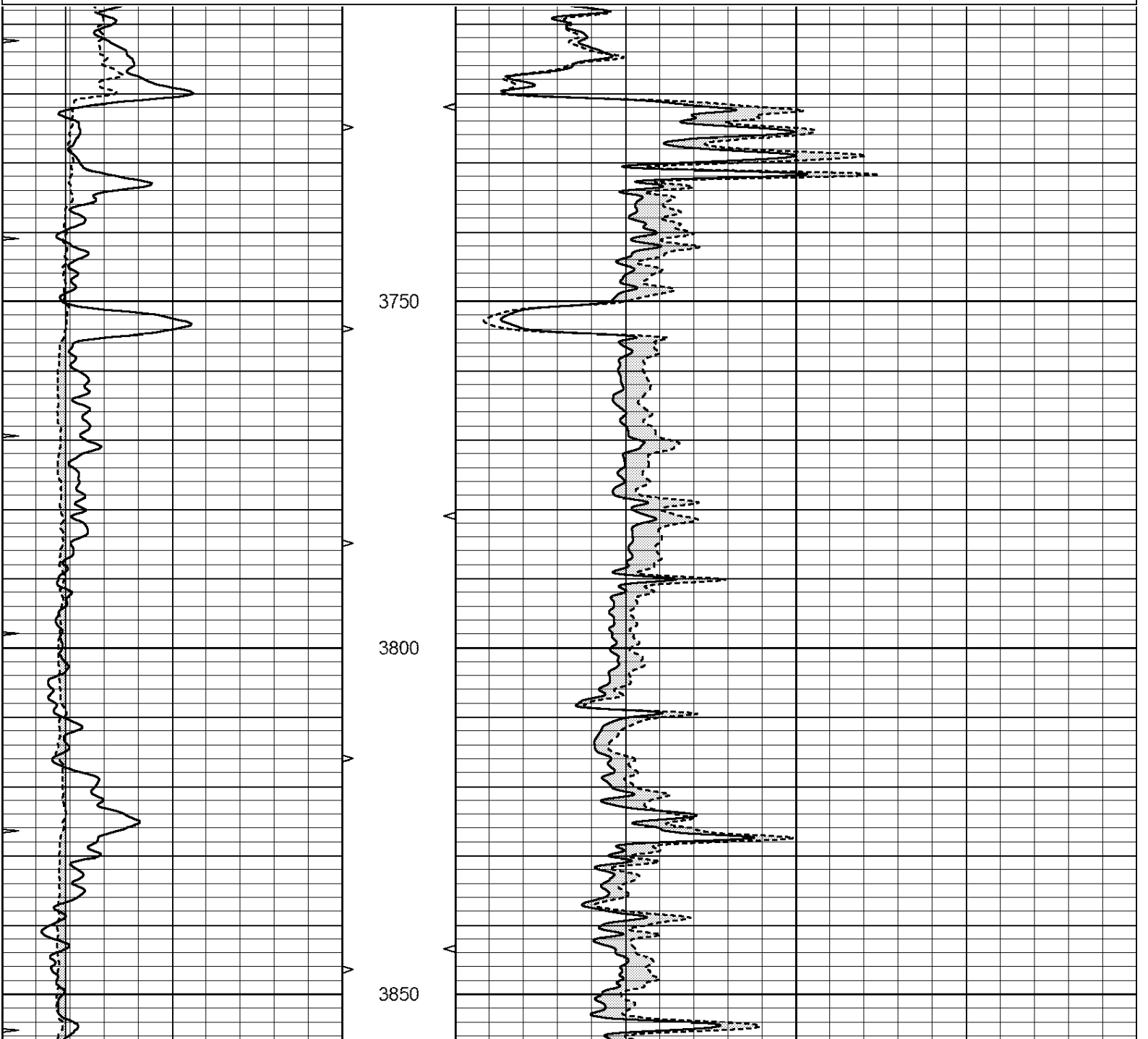
0	GAMMA RAY (GAPI)	150	ABHV	0	MEL1.5 (Ohm-m)	40
6	CALIPER (in)	16	10 (ft3)	0 0	MEL2.0 (Ohm-m)	40
0	MINMK	20	TBHV			

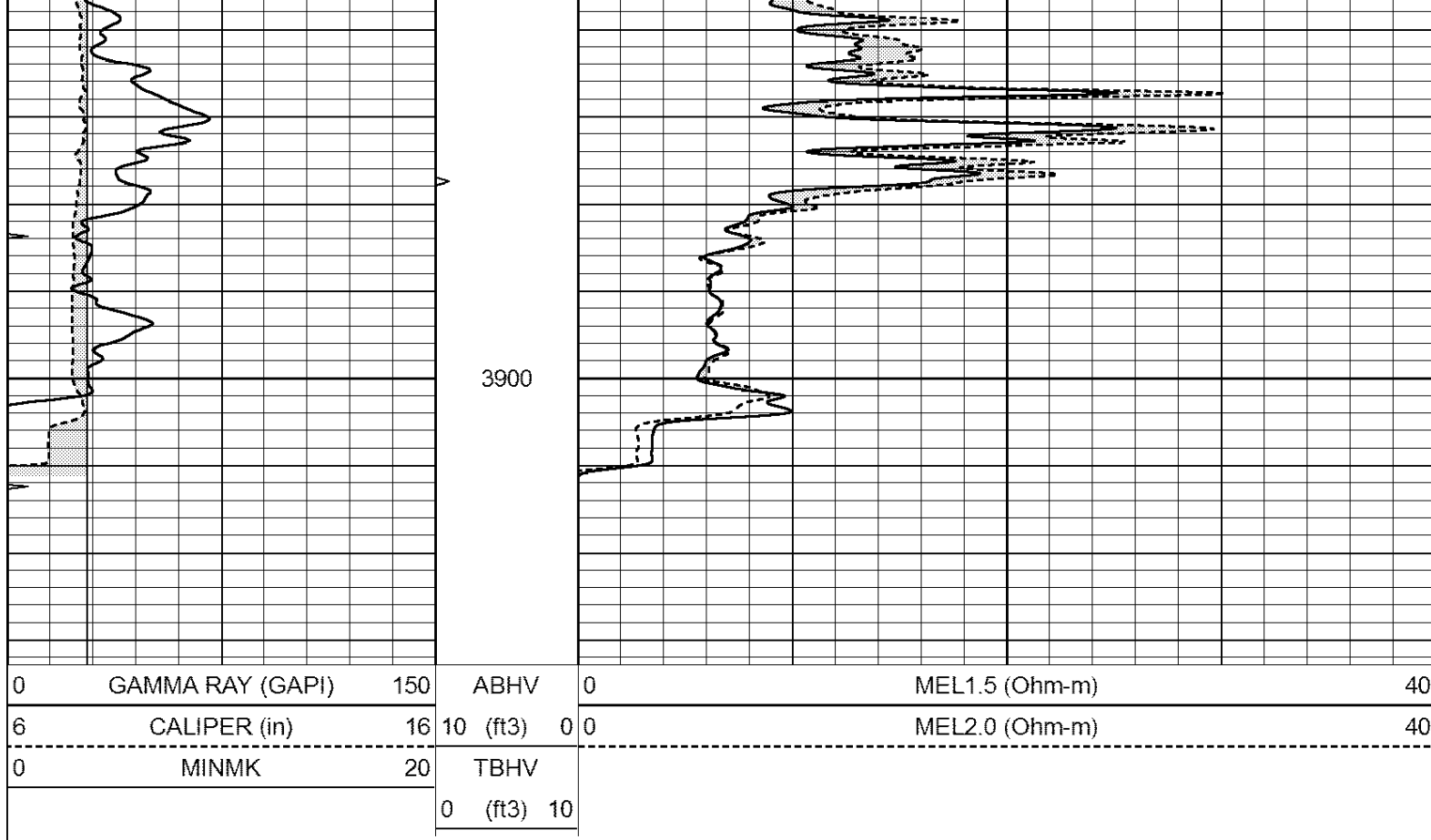


REPEAT SECTION

Database File: 26545pe.db
 Dataset Pathname: pass5.1
 Presentation Format: _micro
 Dataset Creation: Mon Mar 16 00:53:22 2015 by Calc Open-Cased 090629
 Charted by: Depth in Feet scaled 1:240

0	GAMMA RAY (GAPI)	150	ABHV	0	MEL1.5 (Ohm-m)	40
6	CALIPER (in)	16	10 (ft3)	0	MEL2.0 (Ohm-m)	40
0	MINMK	20	TBHV			
			0 (ft3)	10		





Calibration Report

Database File: 26545pe.db
 Dataset Pathname: pass5.1
 Dataset Creation: Mon Mar 16 00:53:22 2015 by Calc Open-Cased 090629

MICRO Calibration Report

Serial Number:	MICRO3	
Tool Model:	PROBE	
Performed:	Thu Nov 17 03:06:31 2011	
Caliper Calibration:	Gain=3.916	Offset=-9.571
References	Low Cal	High Cal
Readings	8.000	14.000
	4.257	5.789
1.5" Calibration:	Gain=100.000	Offset=0.000
References	Low Cal	High Cal
Readings	0.000	20.000
	0.004	0.228
2" Calibration:	Gain=150.553	Offset=-1.220
References	Low Cal	High Cal
Readings	0.000	20.000
	0.005	0.175

Gamma Ray Calibration Report

Serial Number:	GR6	
Tool Model:	OPEN	
Performed:	Sun Mar 08 22:55:40 2015	
Calibrator Value:	150.0	GAPI

Background Reading:	0.0	cps
Calibrator Reading:	276.0	cps
Sensitivity:	0.8000	GAPI/cps