



Pioneer Energy Services

Dual Induction Log

API No. 15-055-22393-00-00

Company **American Warrior, Inc.**
 Well **O'Brate-Finney #7-5**
 Field **Seven Mile**
 County **Finney** State **Kansas**

Location **952' FSL & 744' FWL**

Sec: **5** Twp: **23S** Rge: **32W**

Permanent Datum **Ground Level** Elevation **2853**
 Log Measured From **Kelly Bushing** 11 Ft. Above Perm. Datum
 Drilling Measured From **Kelly Bushing**

Other Services
 CNL/CDL
 MEL
 Elevation
 K.B. 2864
 D.F. G.L. 2853

Date	3/12/2015
Run Number	One
Depth Driller	4900
Depth Logger	4898
Bottom Logged Interval	4897
Top Log Interval	1750
Casing Driller	8.625 @ 1766
Casing Logger	1770
Bit Size	7.875
Type Fluid in Hole	Chemical
Salinity, ppm CL	2600
Density / Viscosity	9.4 47
pH / Fluid Loss	9.5 7.2
Source of Sample	Flowline
Rm @ Meas. Temp	1.02 @ 60
Rmf @ Meas. Temp	0.77 @ 60
Rmc @ Meas. Temp	1.38 @ 60
Source of Rmf / Rmc	Charts
Rm @ BHT	0.49 @ 125
Operating Rig Time	4 1/2 Hours
Max Rec. Temp. F	125
Equipment Number	15
Location	Hays
Recorded By	D.Kerr
Witnessed By	Kevin Timson

<<< Fold Here >>>

All interpretations are opinions based on inferences from electrical or other measurements and we cannot and do not guarantee the accuracy or correctness of any interpretation, and we shall not, except in the case of gross or willful negligence on our part, be liable or responsible for any loss, costs, damages, or expenses incurred or sustained by anyone resulting from any interpretation made by any of our officers, agents or employees. These interpretations are also subject to our general terms and conditions set out in our current Price Schedule.

Comments

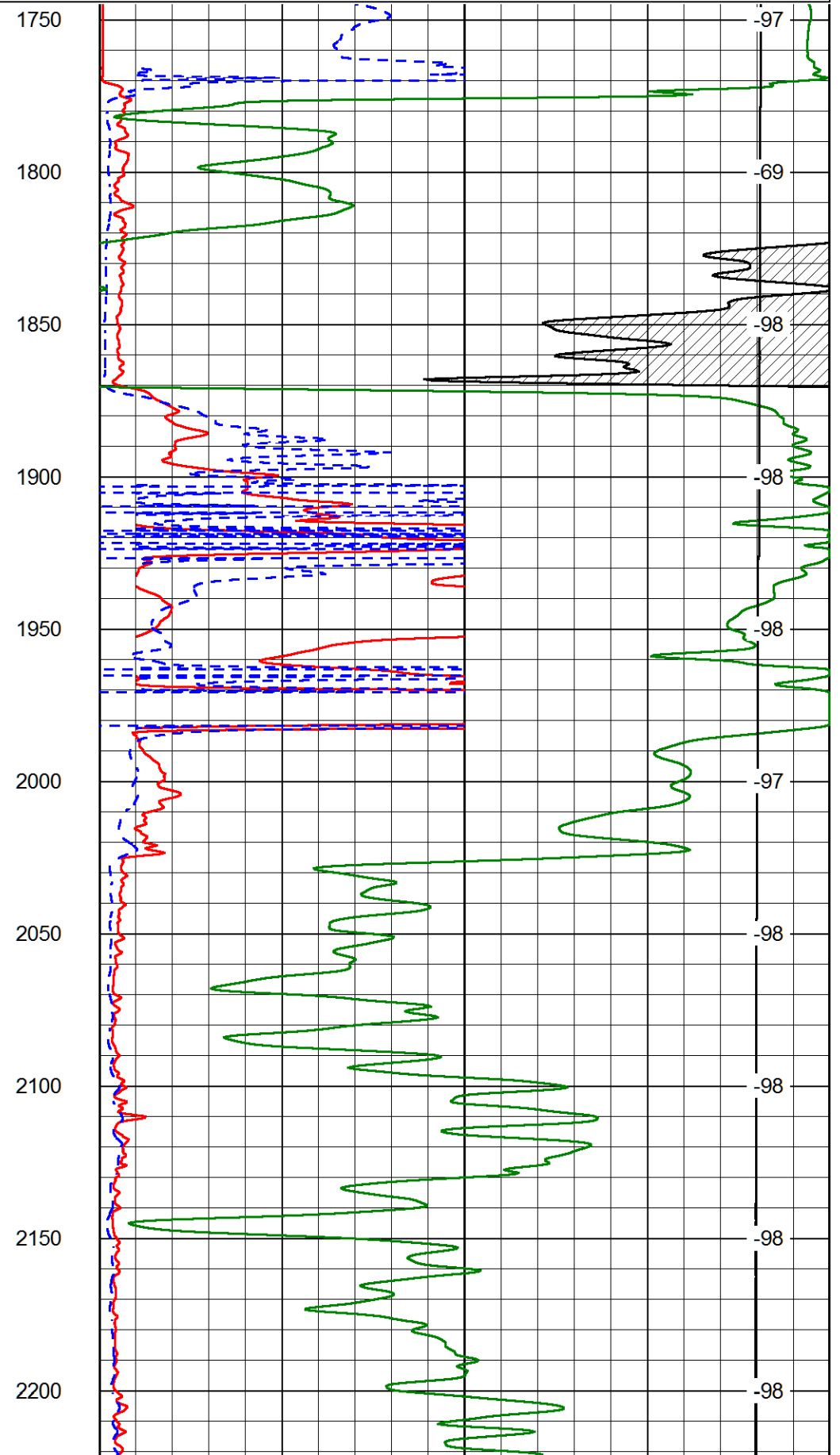
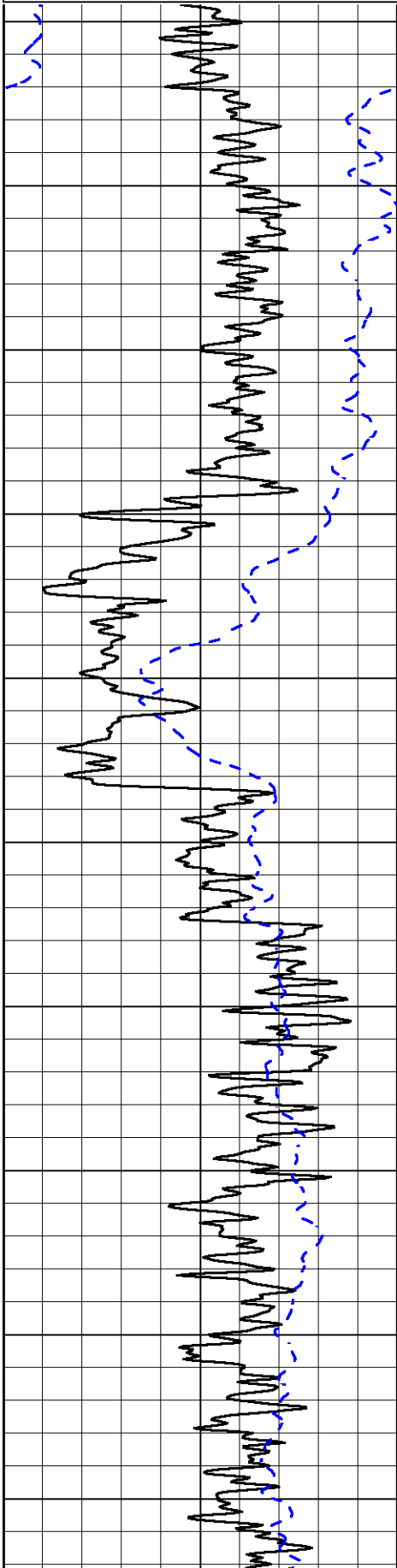
Thank you for using Pioneer Energy Services
 785.625.3858

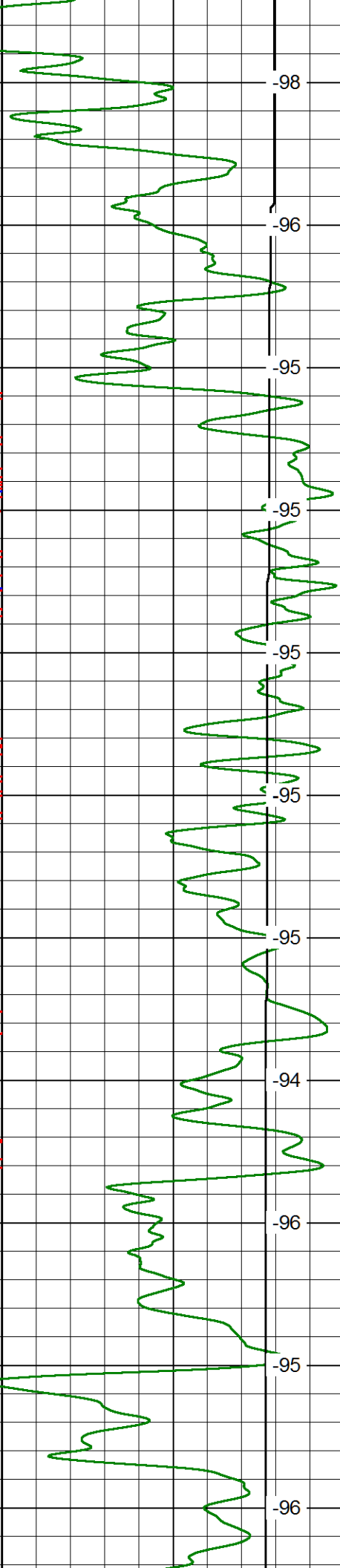
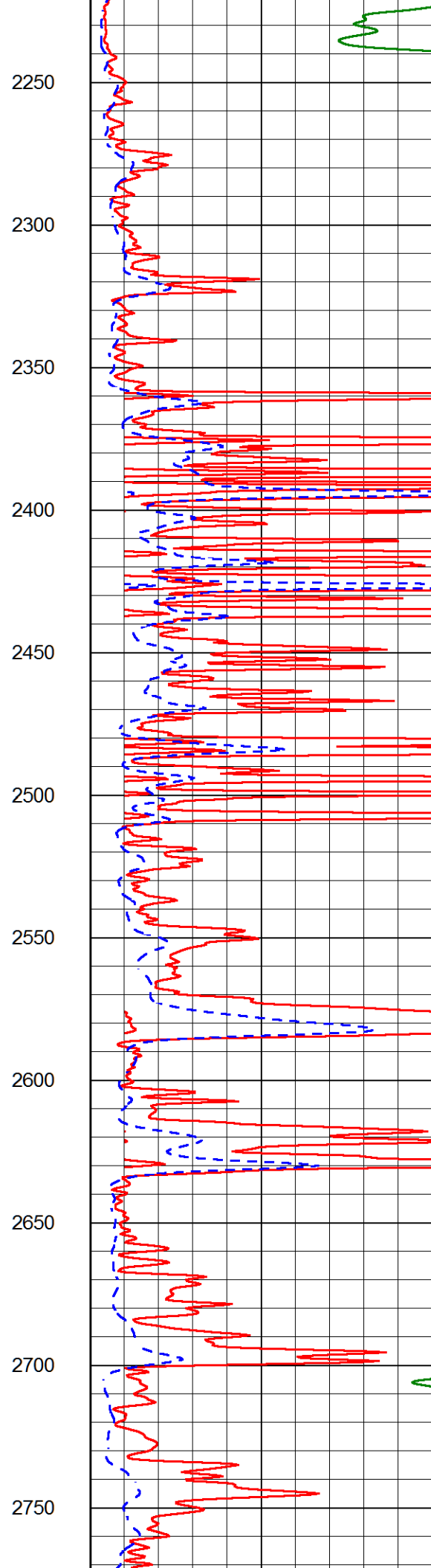
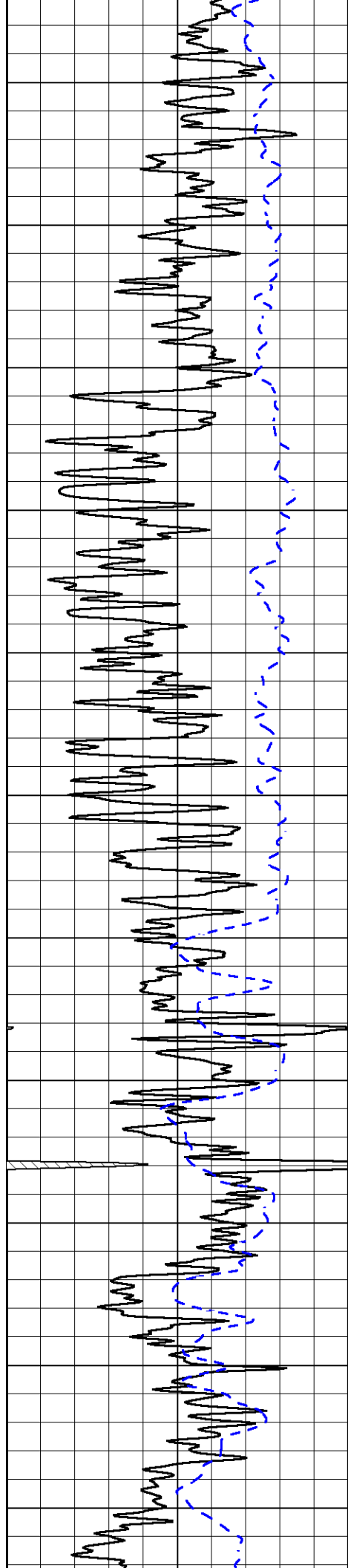
 Garden City KS, 5 North to Six Mile RD,
 1 East, 1/2 North, East and North Into

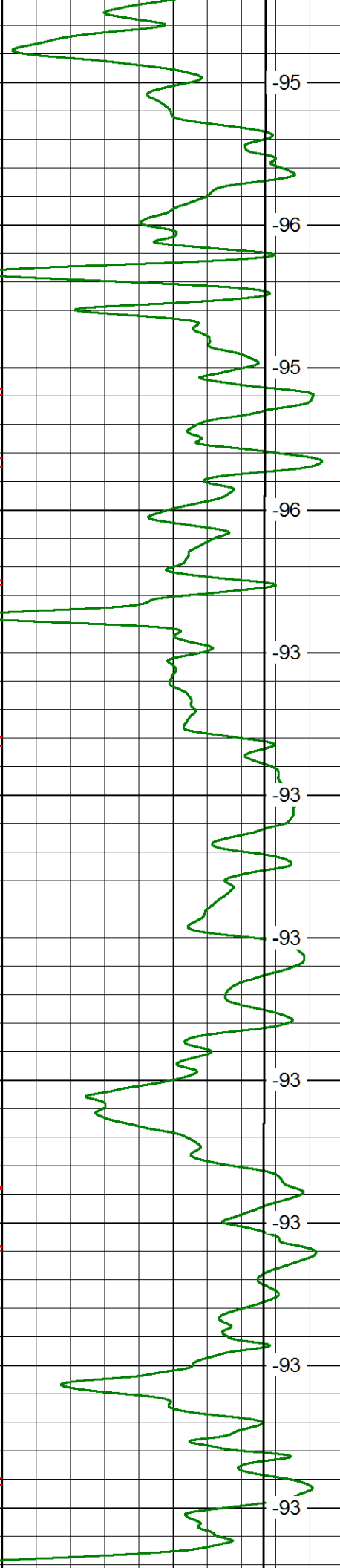
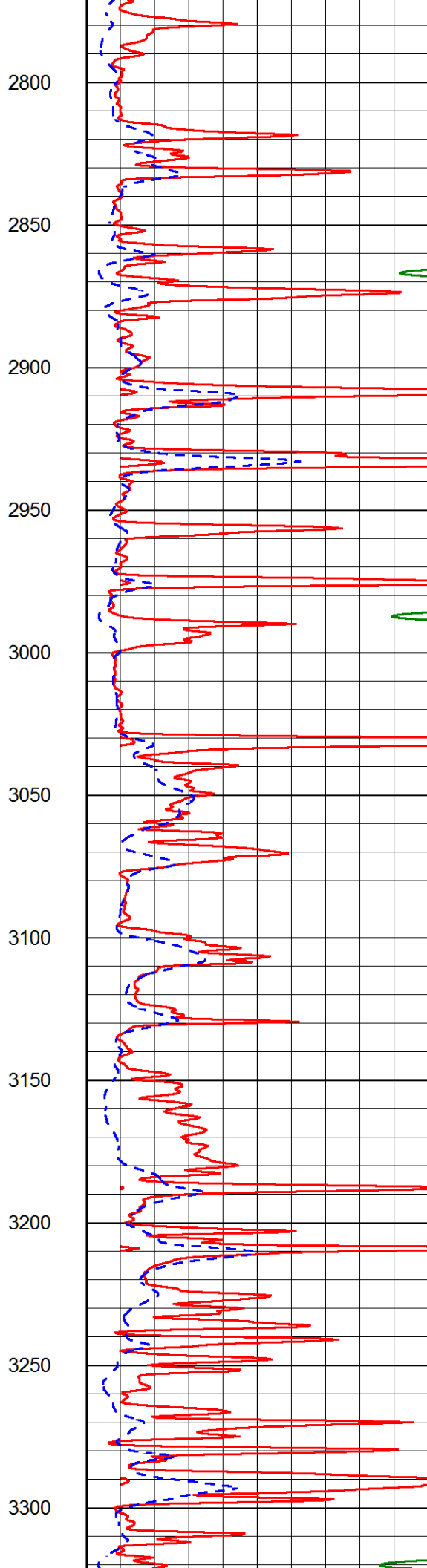
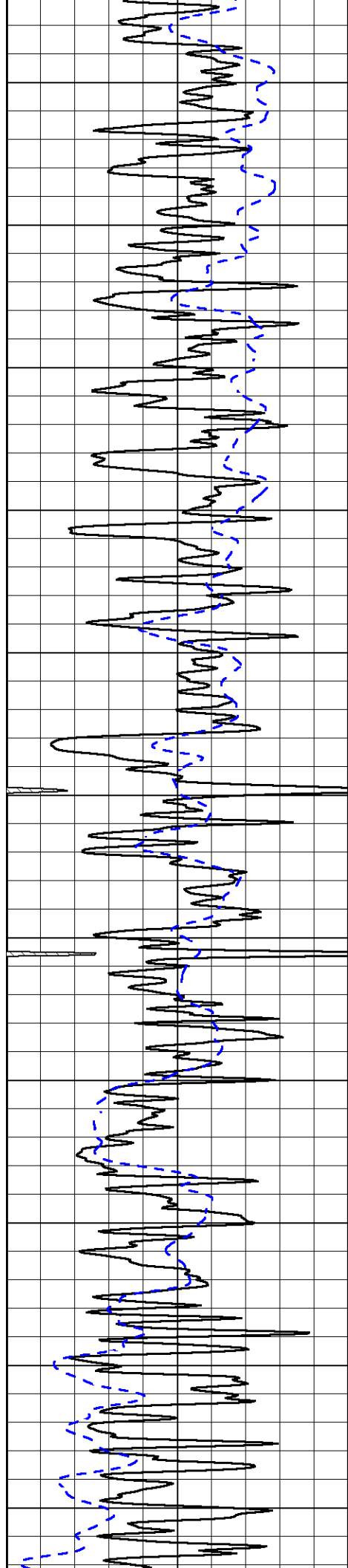
Database File	amwarrior_obratefinney_7_5hd.db
Dataset Pathname	DIL/aw
Presentation Format	dil2in
Dataset Creation	Thu Mar 12 04:00:59 2015
Charted by	Depth in Feet scaled 1:600

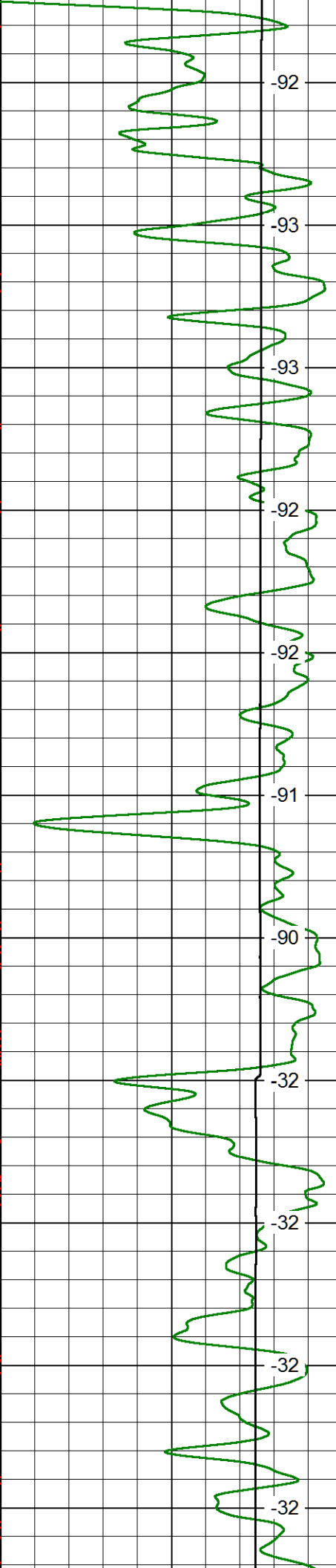
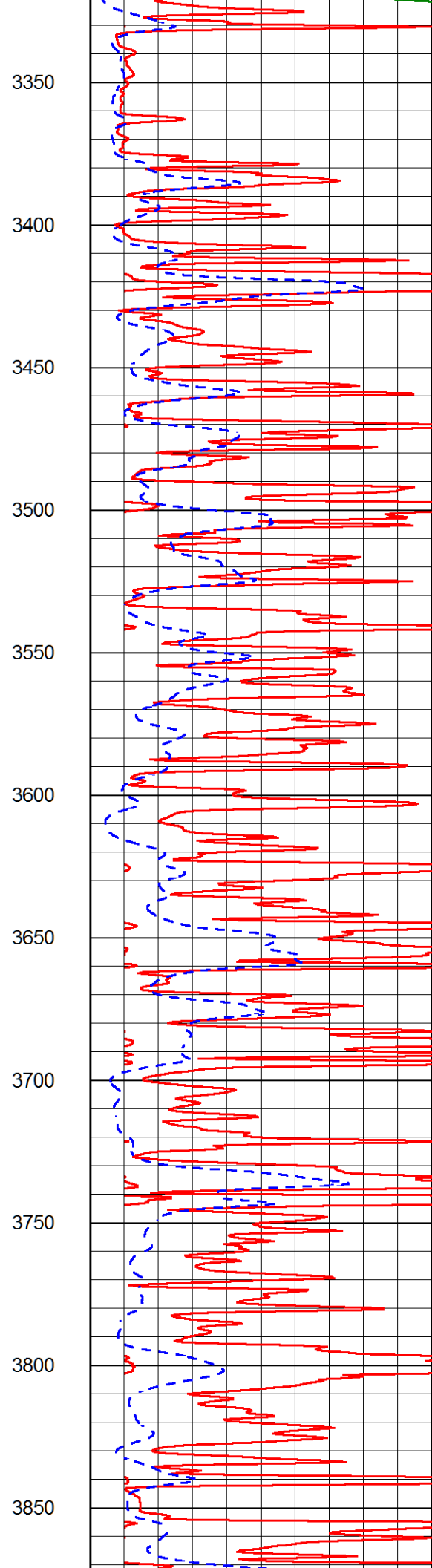
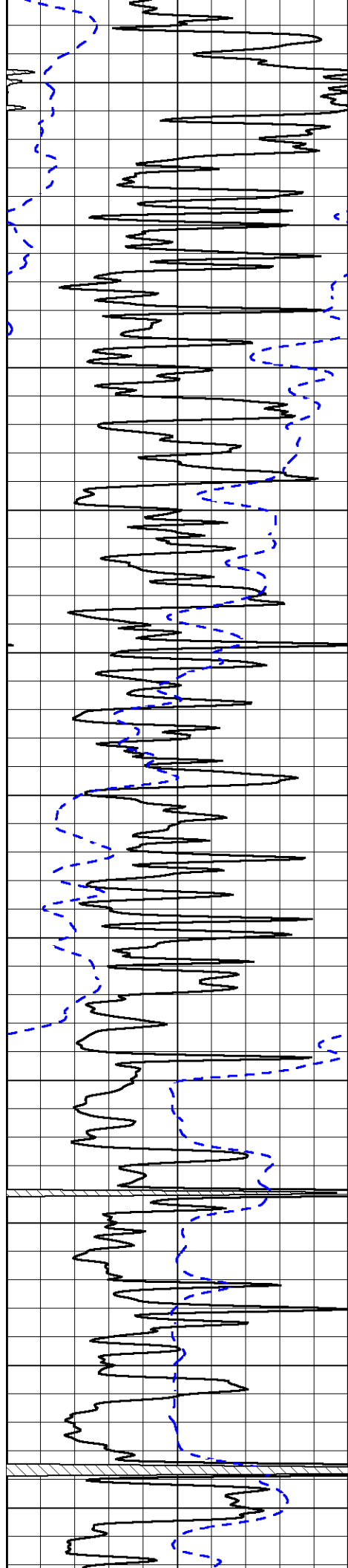
0	Gamma Ray	150
-200	SP (mV)	0

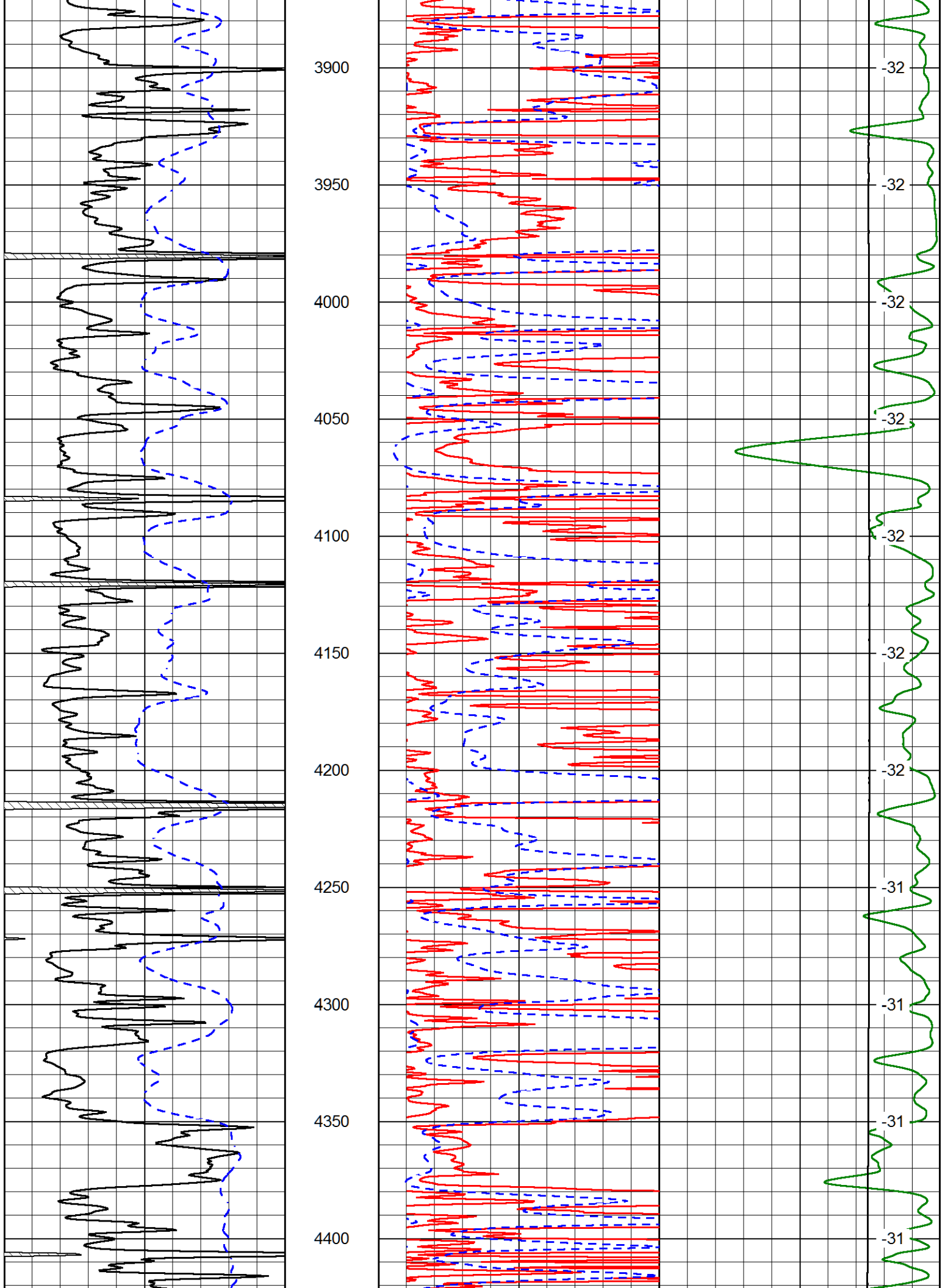
1000	Conductivity	0	
15000	Line Tension	0	
0	Shallow Resistivity	50	LSPD
0	Deep Resistivity	50	
50	Shallow Resistivity	500	
50	Deep Resistivity	500	

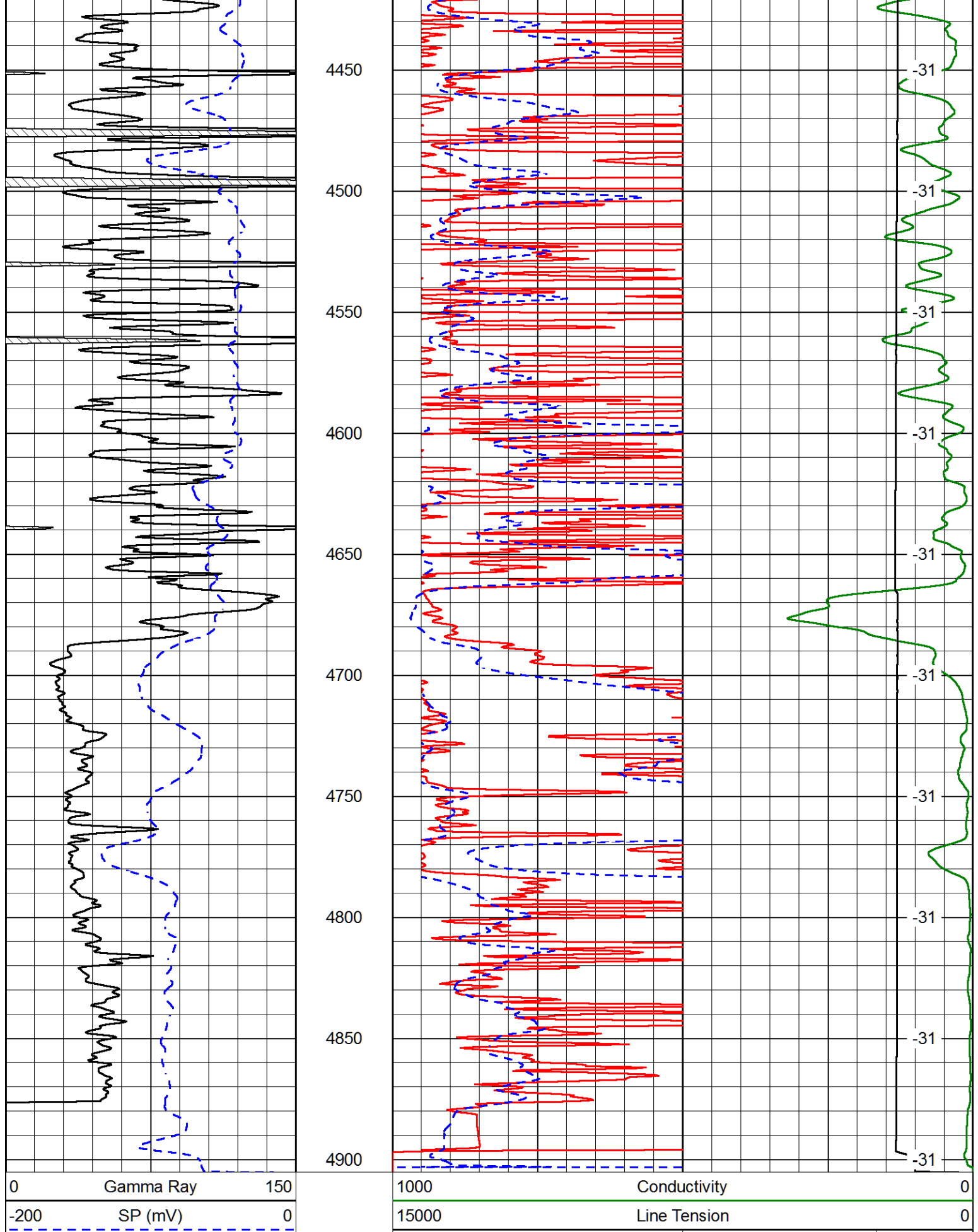












0 Gamma Ray 150
 -200 SP (mV) 0

1000 Conductivity 0
 15000 Line Tension 0

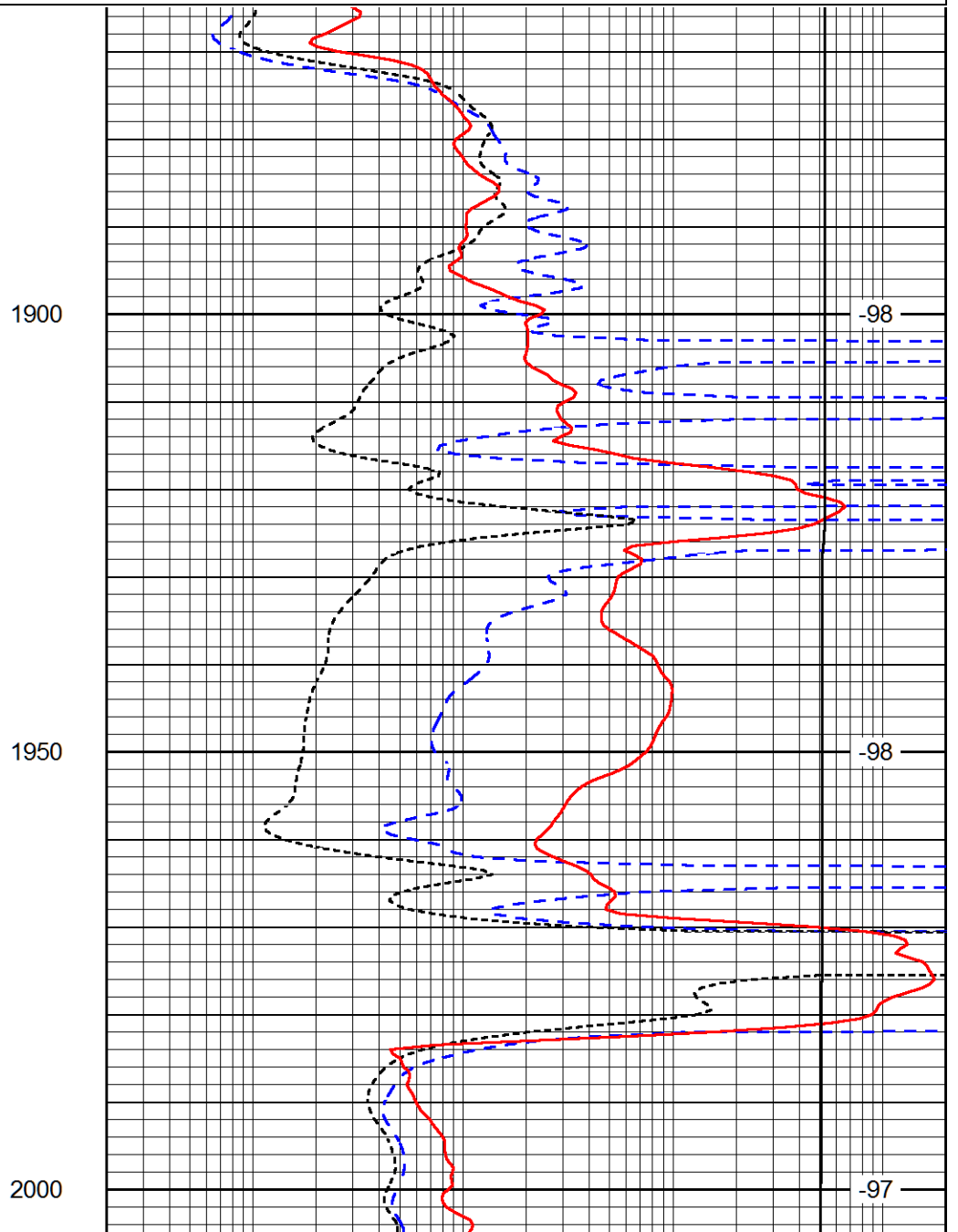
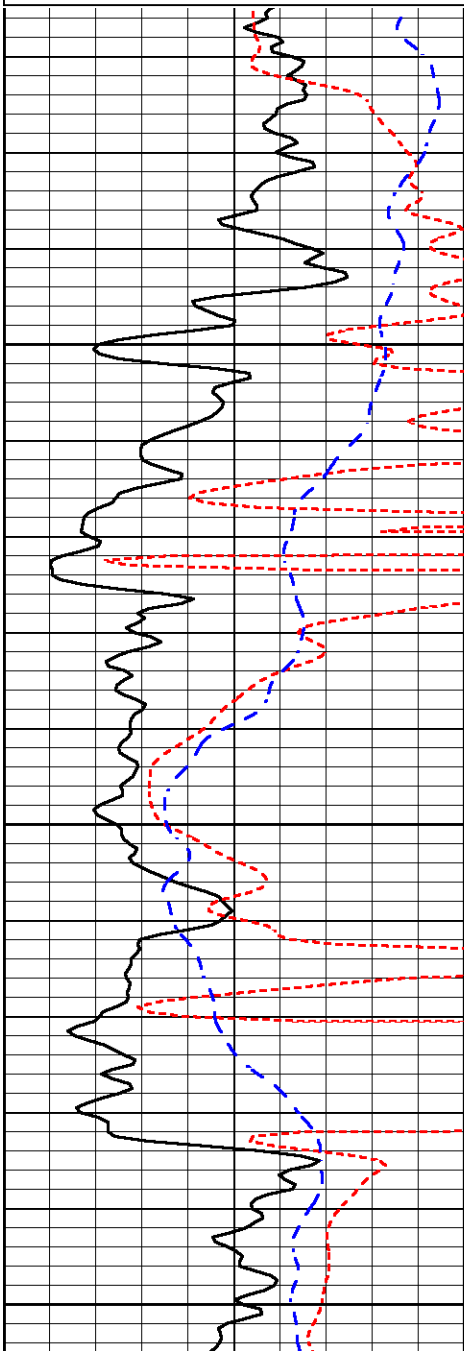
0	Shallow Resistivity	50	LSPD
0	Deep Resistivity	50	
50	Shallow Resistivity	500	
50	Deep Resistivity	500	

Database File amwarrior_obratefinney_7_5hd.db
 Dataset Pathname DIL/aw
 Presentation Format dil
 Dataset Creation Thu Mar 12 04:00:59 2015
 Charted by Depth in Feet scaled 1:240

0	Gamma Ray	150
-160	RxoRt	40
-200	SP (mV)	0

0.2	Deep Resistivity	2000
0.2	Medium Resistivity	2000
0.2	Shallow Resistivity	2000
10000	Line Tension	0

LSPD



0	Gamma Ray	150
-160	RxoRt	40
-200	SP (mV)	0

0.2	Deep Resistivity	2000
0.2	Medium Resistivity	2000
0.2	Shallow Resistivity	2000
10000	Line Tension	0

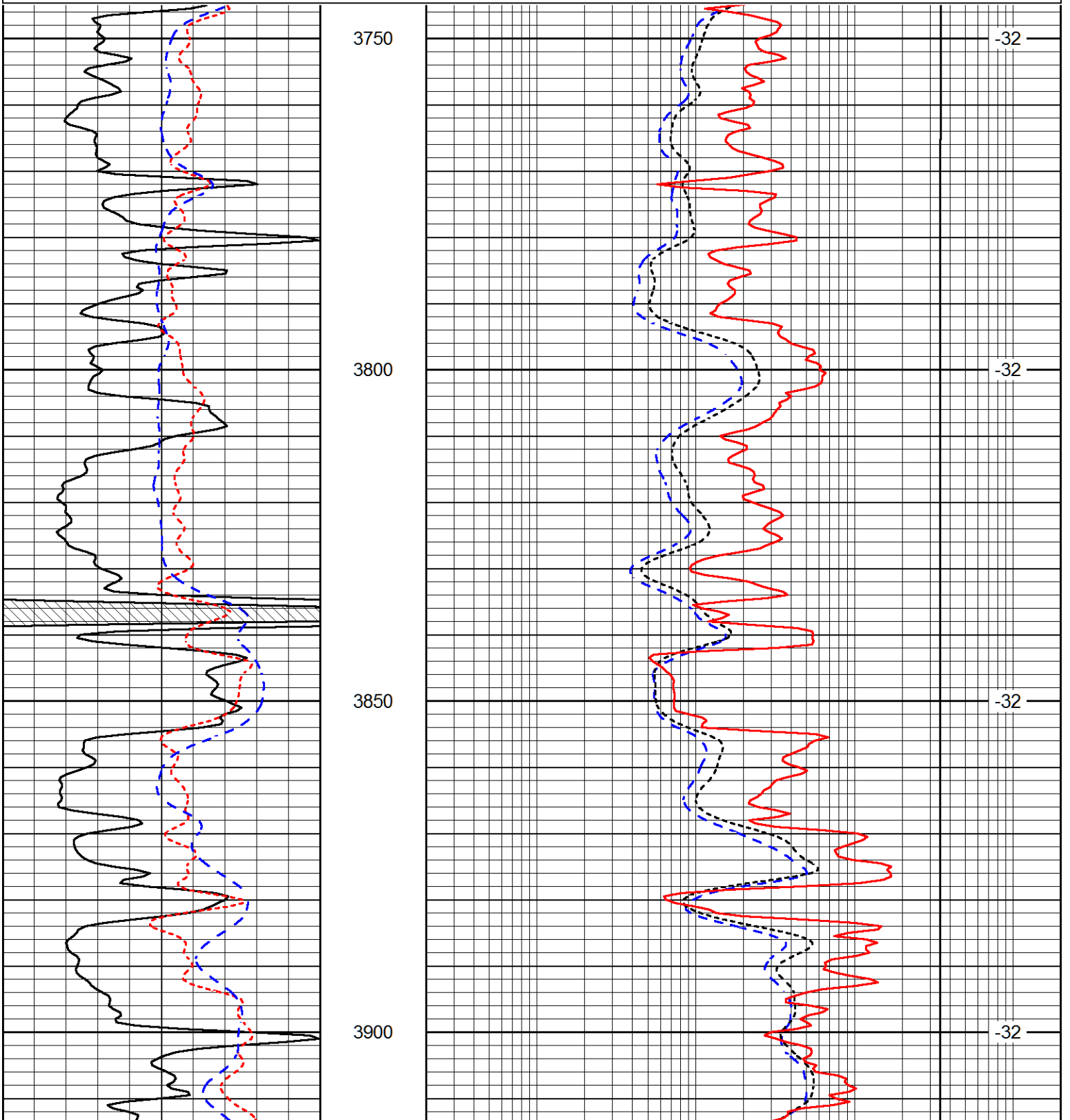
LSPD

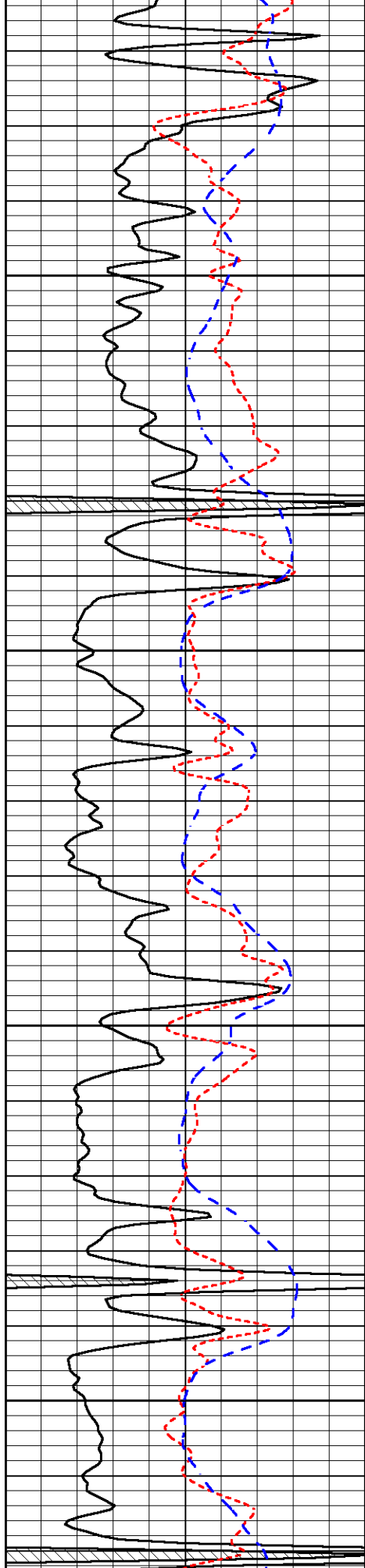
Database File amwarrior_obratefinney_7_5hd.db
 Dataset Pathname DIL/aw
 Presentation Format dil
 Dataset Creation Thu Mar 12 04:00:59 2015
 Charted by Depth in Feet scaled 1:240

0	Gamma Ray	150
-160	RxoRt	40
-200	SP (mV)	0

0.2	Deep Resistivity	2000
0.2	Medium Resistivity	2000
0.2	Shallow Resistivity	2000
10000	Line Tension	0

LSPD



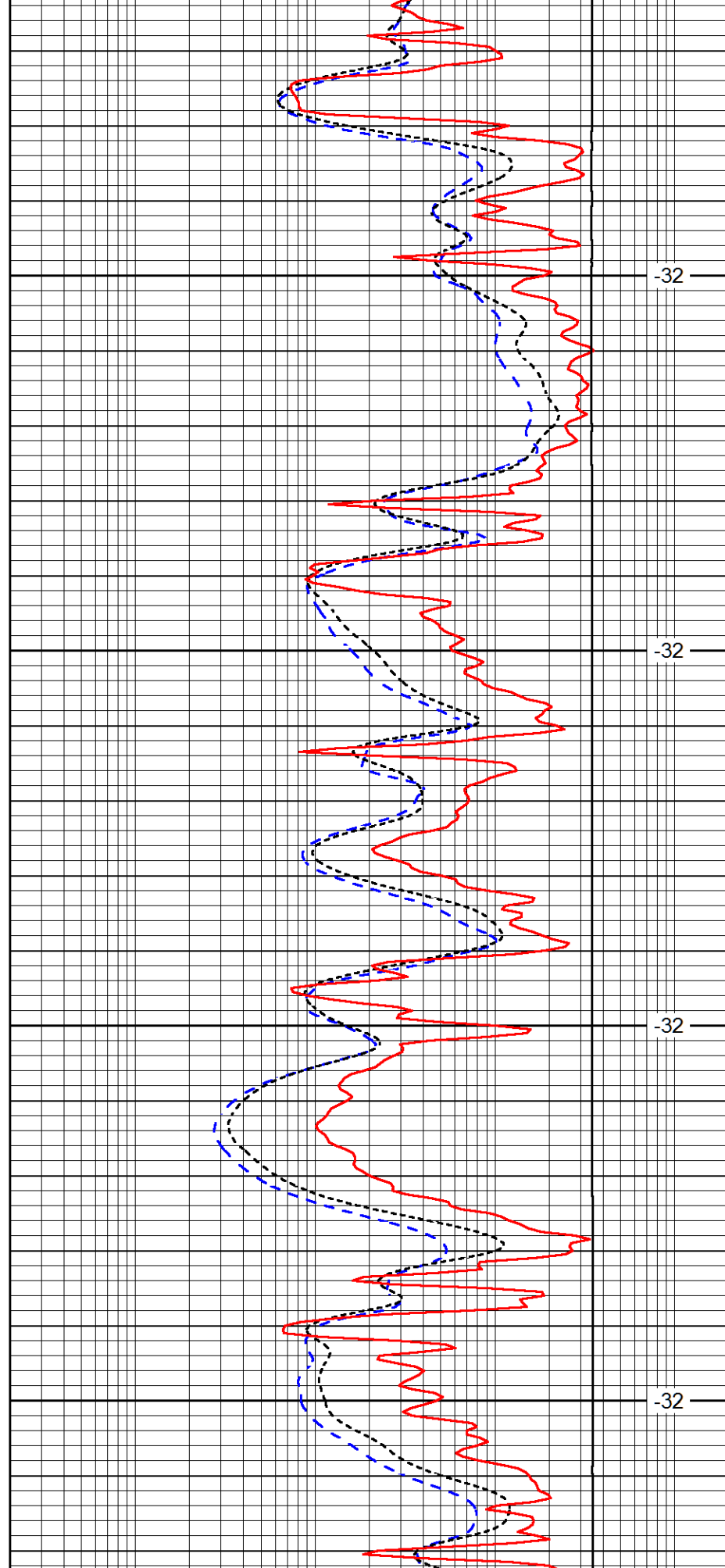


3950

4000

4050

4100

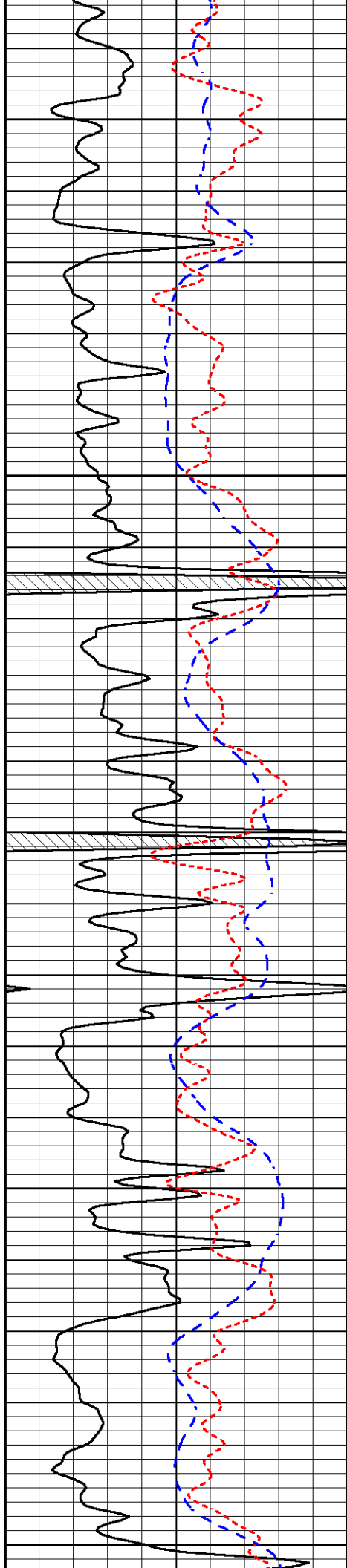


-32

-32

-32

-32



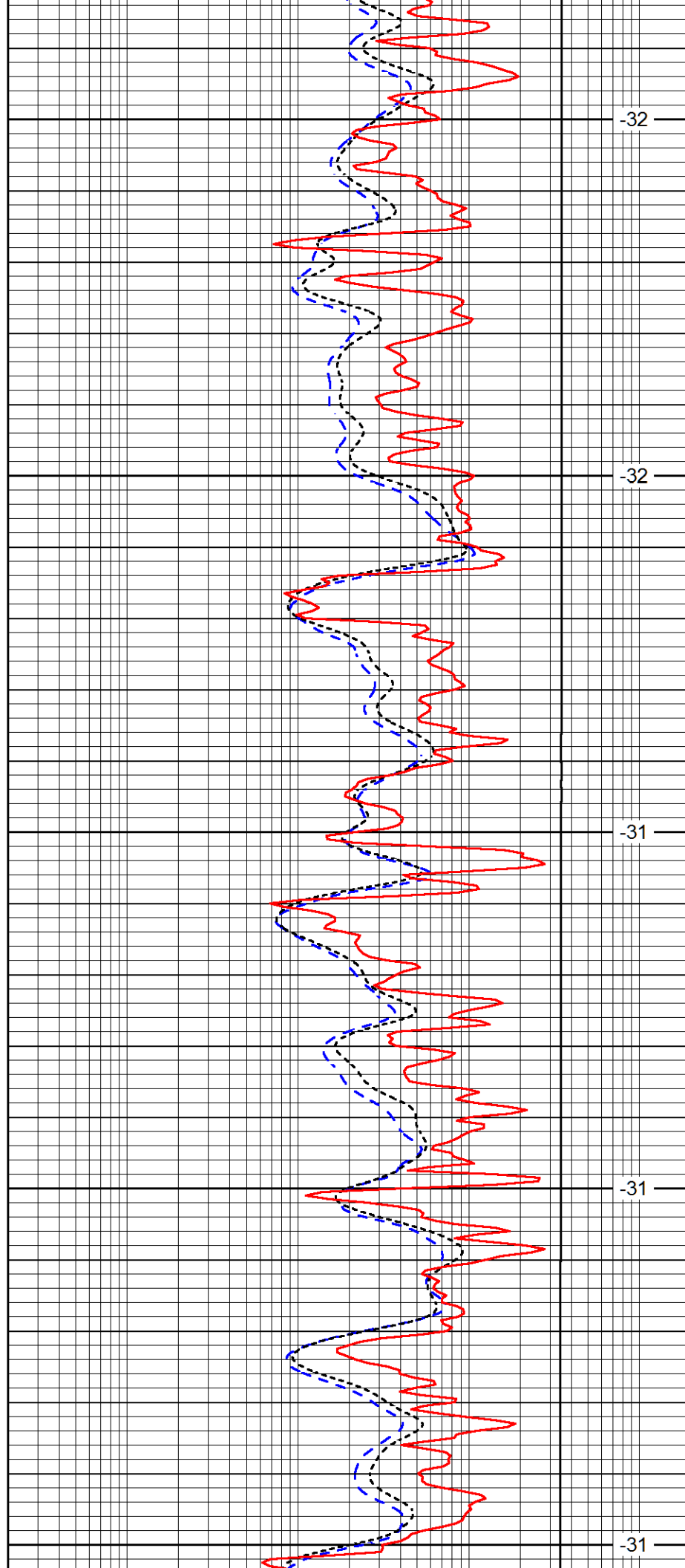
4150

4200

4250

4300

4350



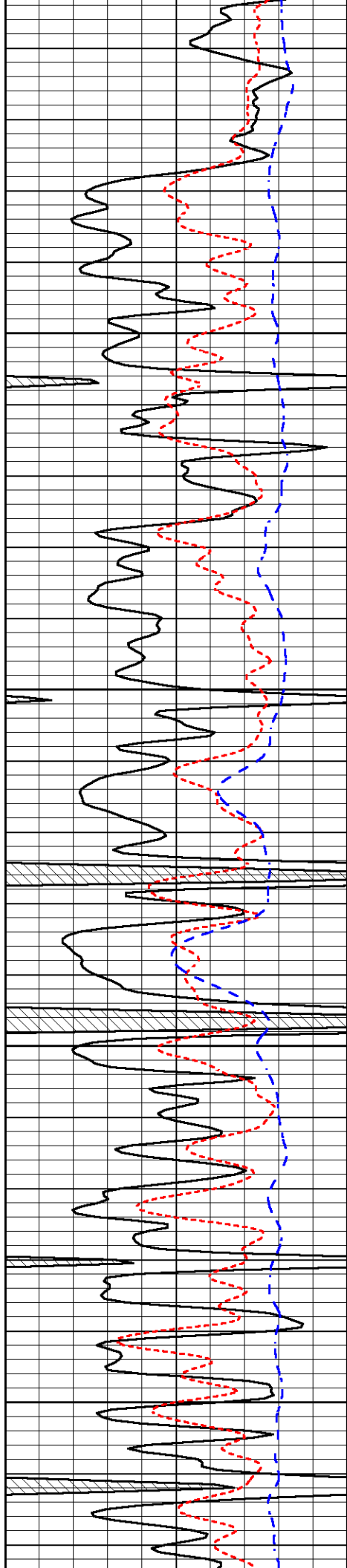
-32

-32

-31

-31

-31

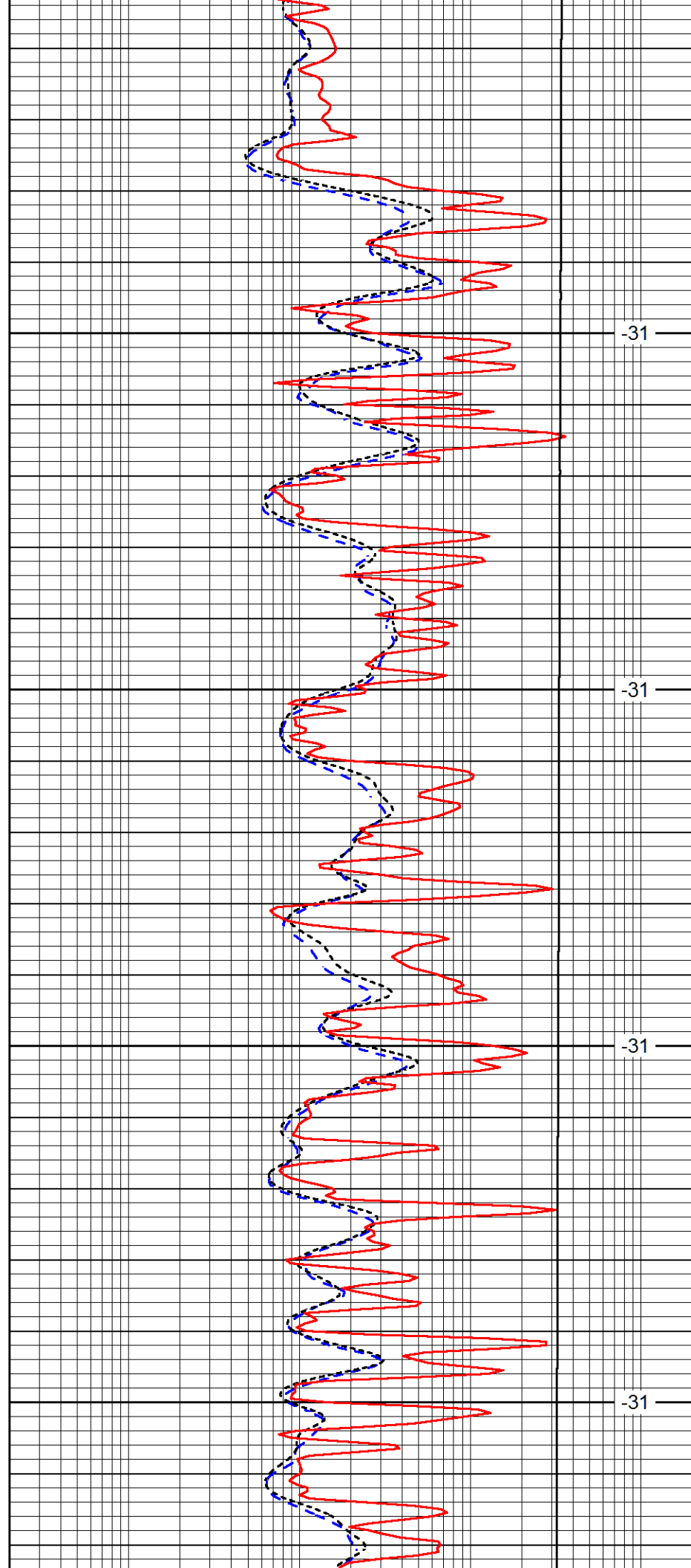


4400

4450

4500

4550

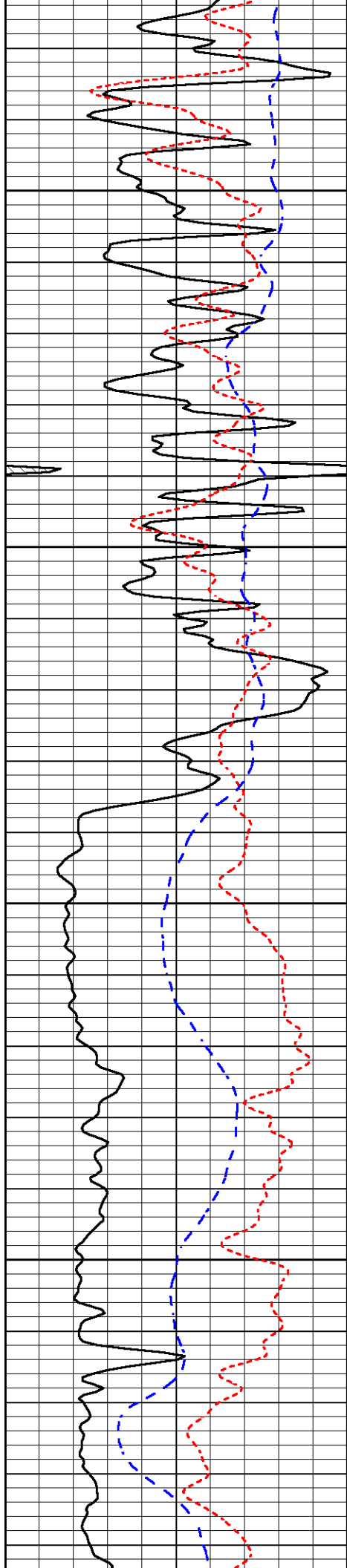


-31

-31

-31

-31

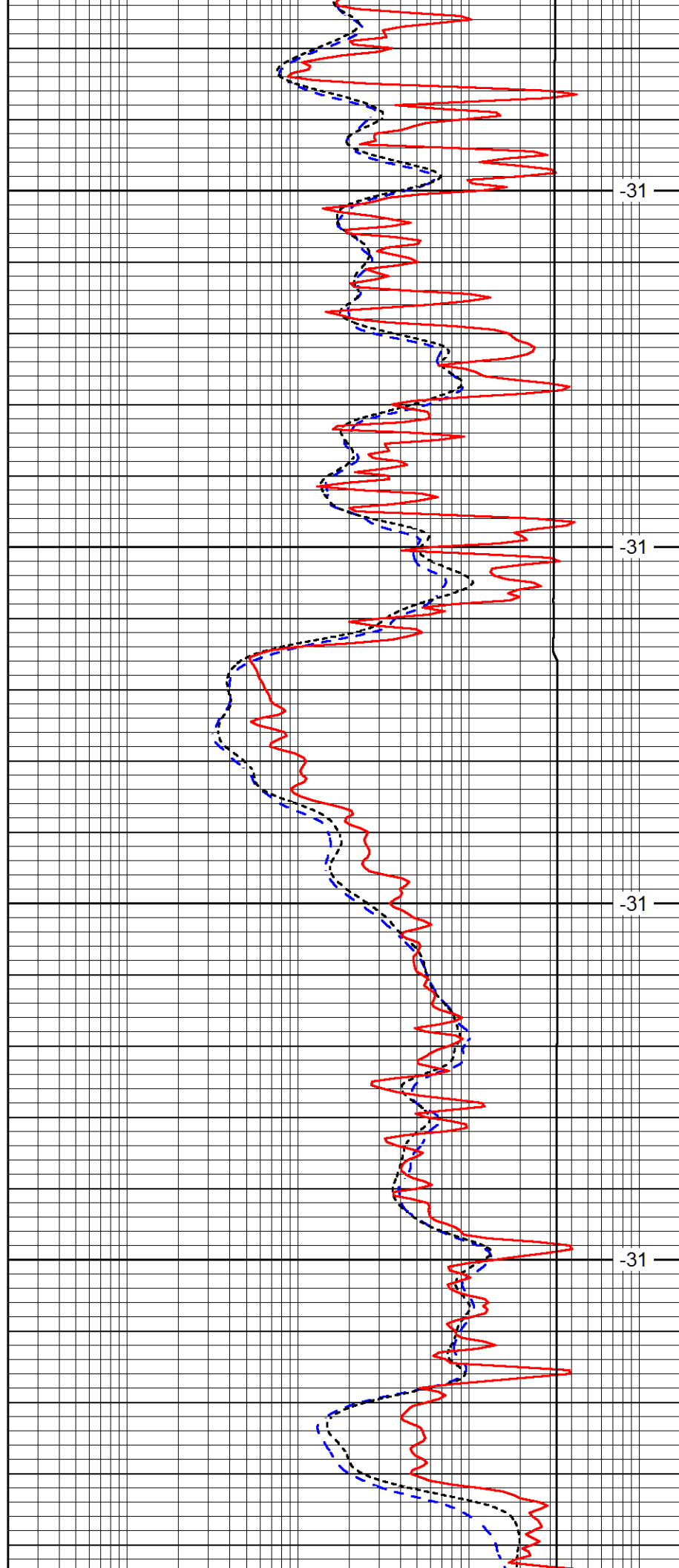


4600

4650

4700

4750

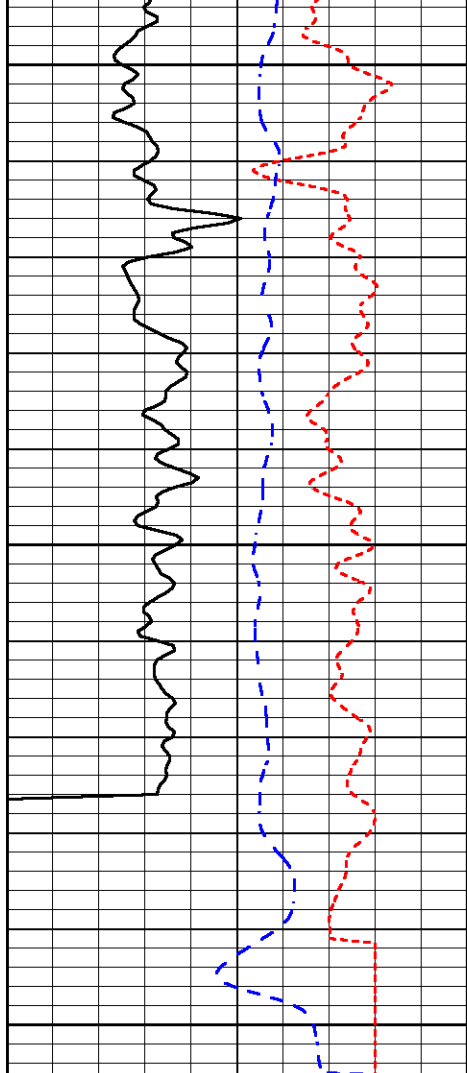


-31

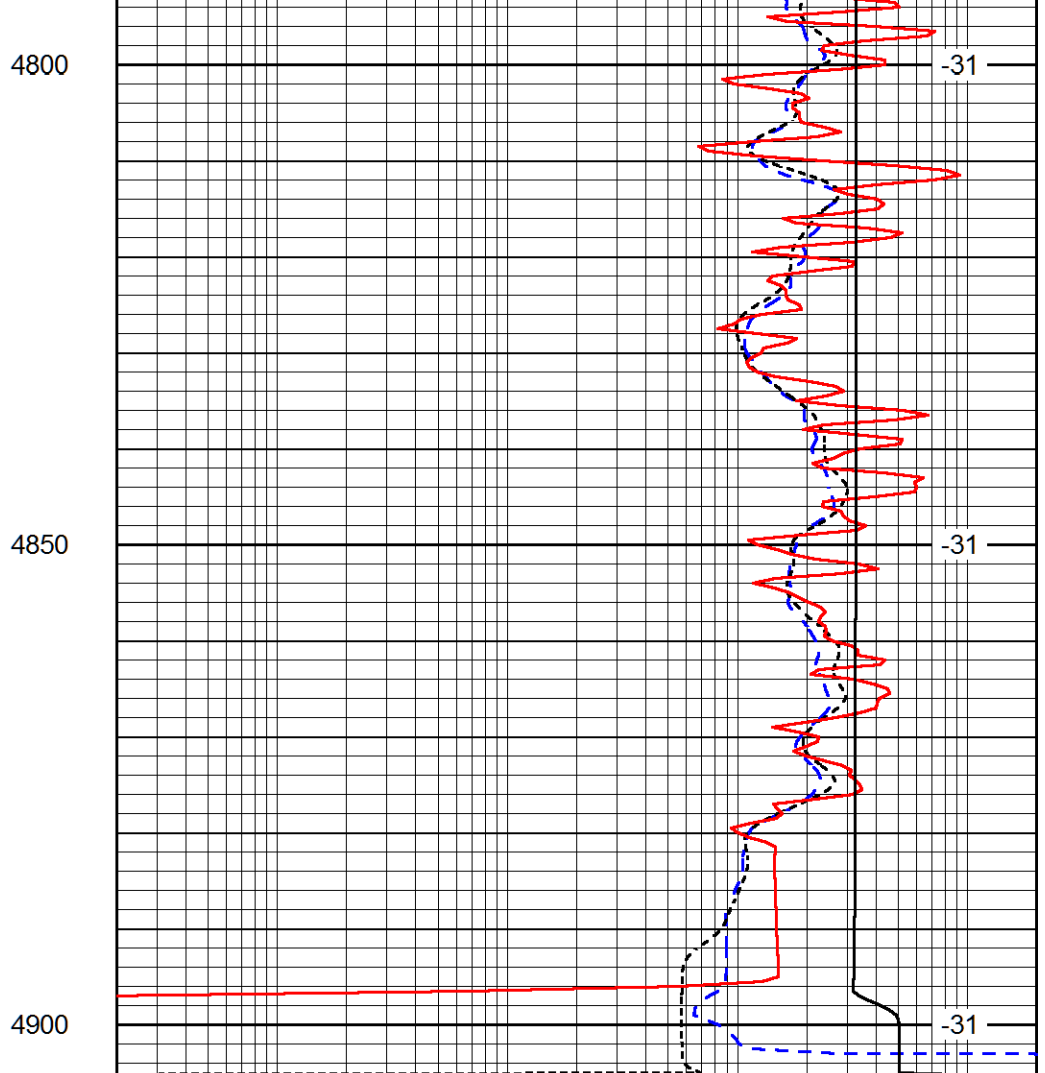
-31

-31

-31



0	Gamma Ray	150
-160	RxoRt	40
-200	SP (mV)	0



0.2	Deep Resistivity	2000
0.2	Medium Resistivity	2000
0.2	Shallow Resistivity	2000
10000	Line Tension	0

LSPD