



Pioneer Energy Services

Dual Compensated Porosity Log

API No.	15-147-20,752-00-00		
Company	Bach Oil Production		
Well	Knape No. 5		
Field	Huffstutter		
County	Phillips		
State	Kansas		
Location	2,152' FSL & 2,360' FEL		
Sec: 18	Twp: 1S	Rge: 18W	
Permanent Datum	Ground Level	Elevation 2060	
Log Measured From	Kelly Bushing	5	Ft. Above Perm. Datum
Drilling Measured From	Kelly Bushing		
Date	12/30/2014	Elevation K.B. 2065 D.F. 2060 G.L. 2060	
Run Number	One		
Type Log	CNL / CDL		
Depth Driller	3462		
Depth Logger	3461		
Bottom Logged Interval	3459		
Top Logged Interval	2900		
Type Fluid In Hole	Chemical		
Salinity, PPM CL	500		
Density	8.8		
Level	Full		
Max. Rec. Temp. F	111		
Operating Rig Time	3 Hours		
Equipment -- Location	108	Hays	
Recorded By	J. Long		
Witnessed By	Bob Peterson		

Borehole Record				Casing Record			
Run No	Bit	From	To	Size	Wgt.	From	To
One	12.25	00	221	8.625	23#	00	221
Two	7.875	221	TD				

<<< Fold Here >>>

All interpretations are opinions based on inferences from electrical or other measurements and we cannot and do not guarantee the accuracy or correctness of any interpretation, and we shall not, except in the case of gross or willful negligence on our part, be liable or responsible for any loss, costs, damages, or expenses incurred or sustained by anyone resulting from any interpretation made by any of our officers, agents or employees. These interpretations are also subject to our general terms and conditions set out in our current Price Schedule.

Comments

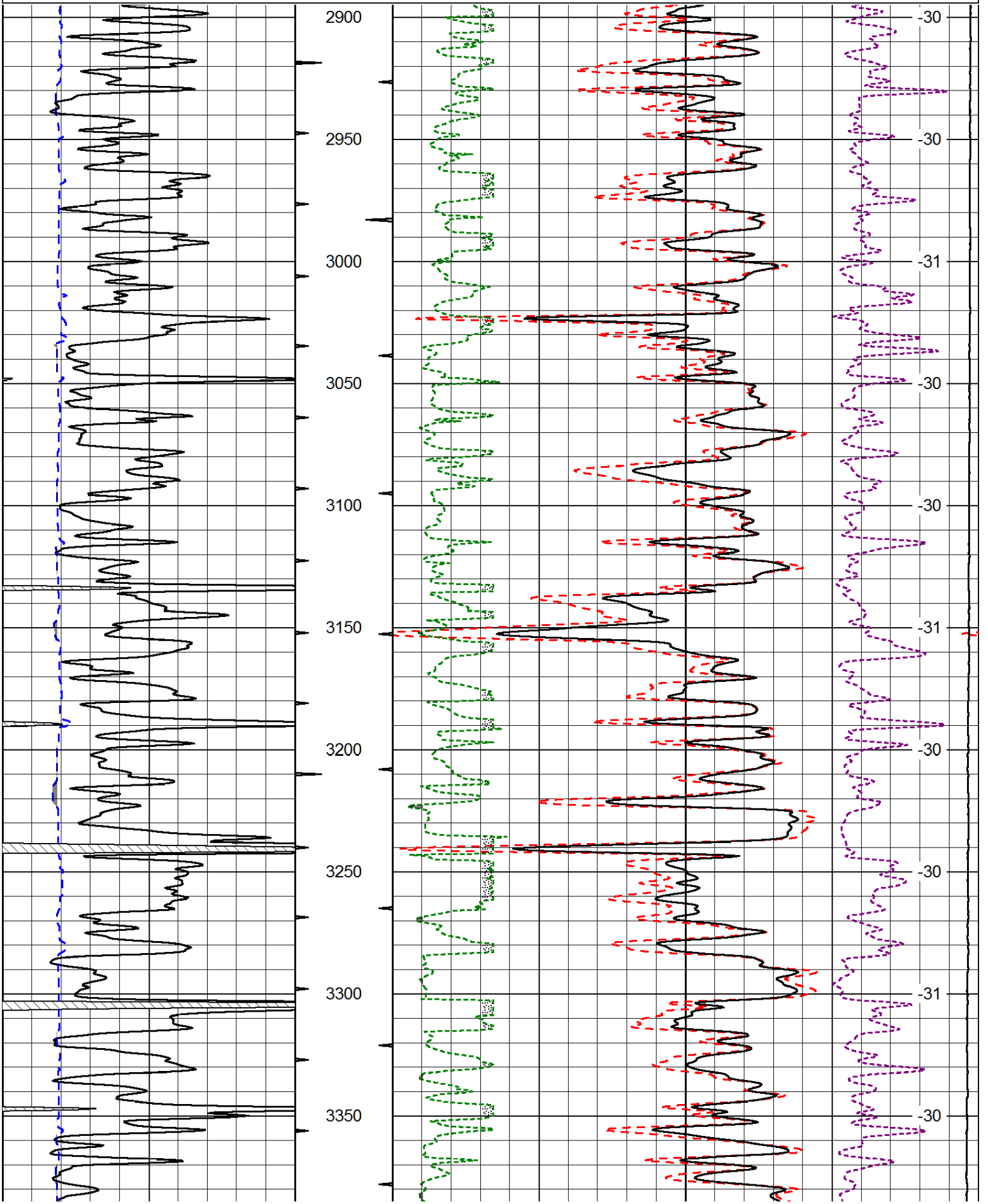
Thank you for using Log-Tech, Inc.
(785) 625-3858

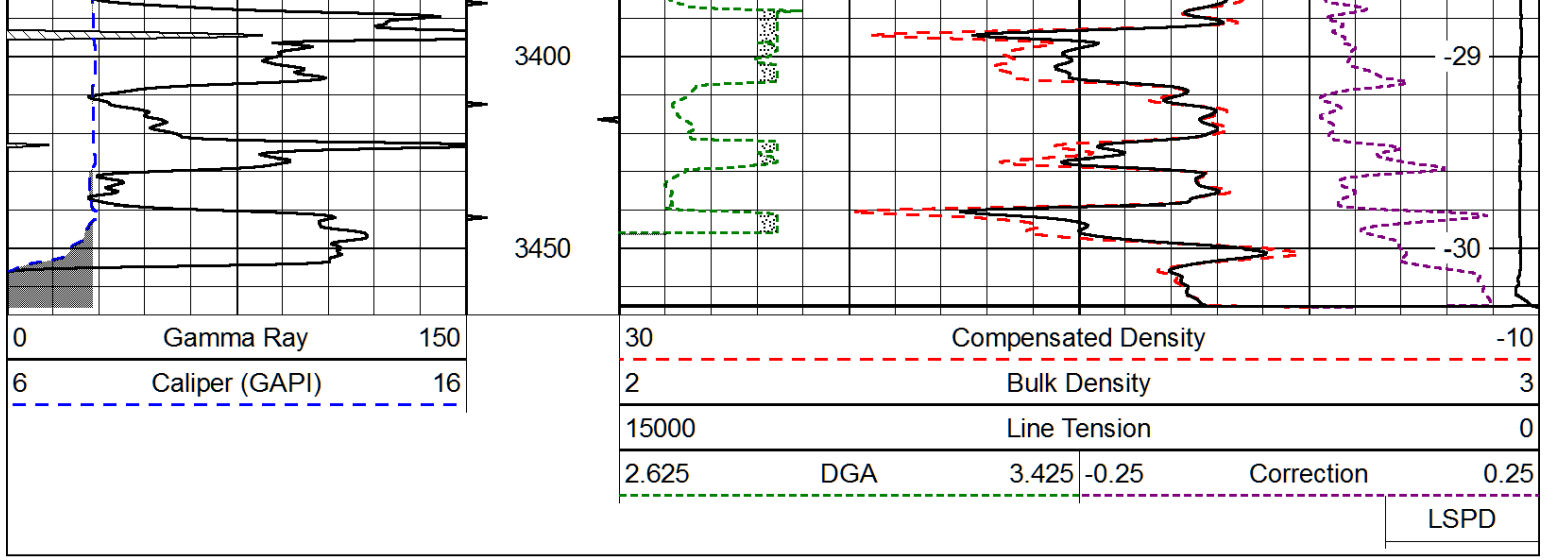
Phillipsburg, 10 North to Hunter Road, 3 West to 300 Road, 4 1/2 North, West Into

Database File: bach_knape_5hd.db
 Dataset Pathname: dil/bachstck
 Presentation Format: cdl
 Dataset Creation: Tue Dec 30 20:19:04 2014
 Charted by: Depth in Feet scaled 1:600

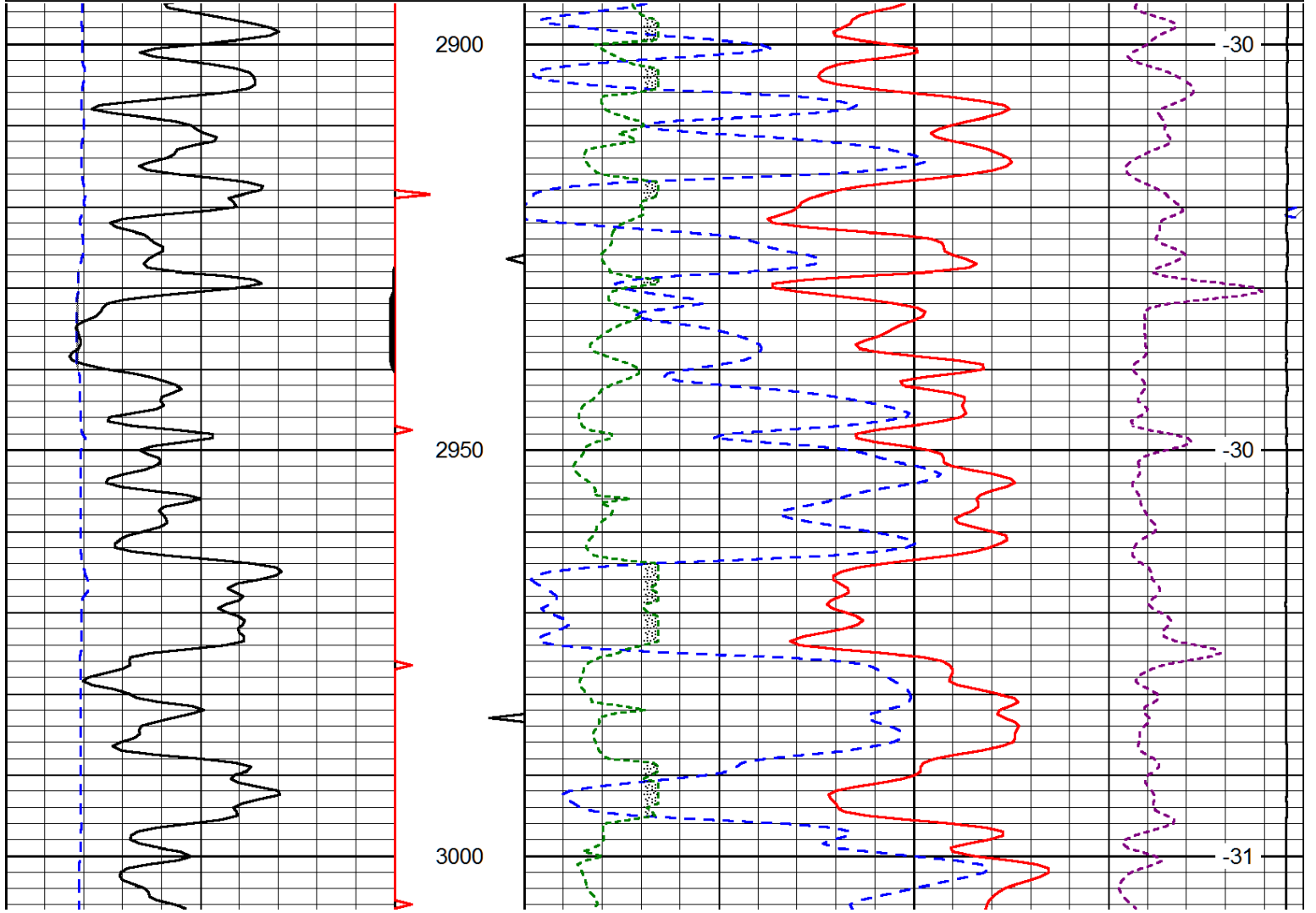
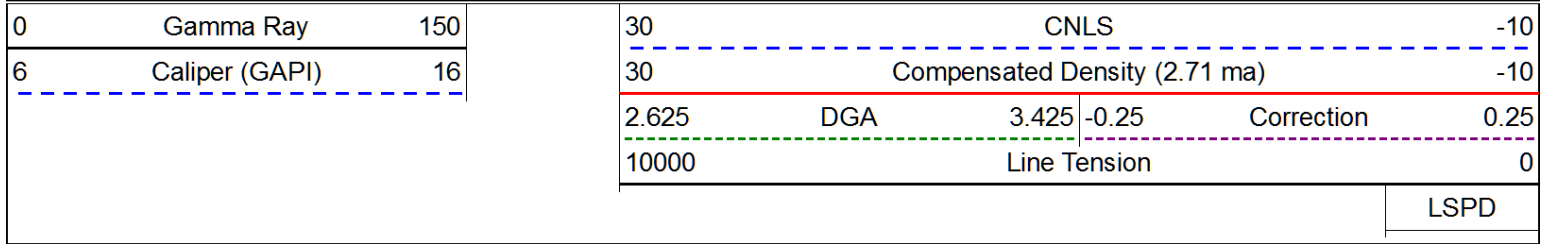
0	Gamma Ray	150
6	Caliper (GAPI)	16

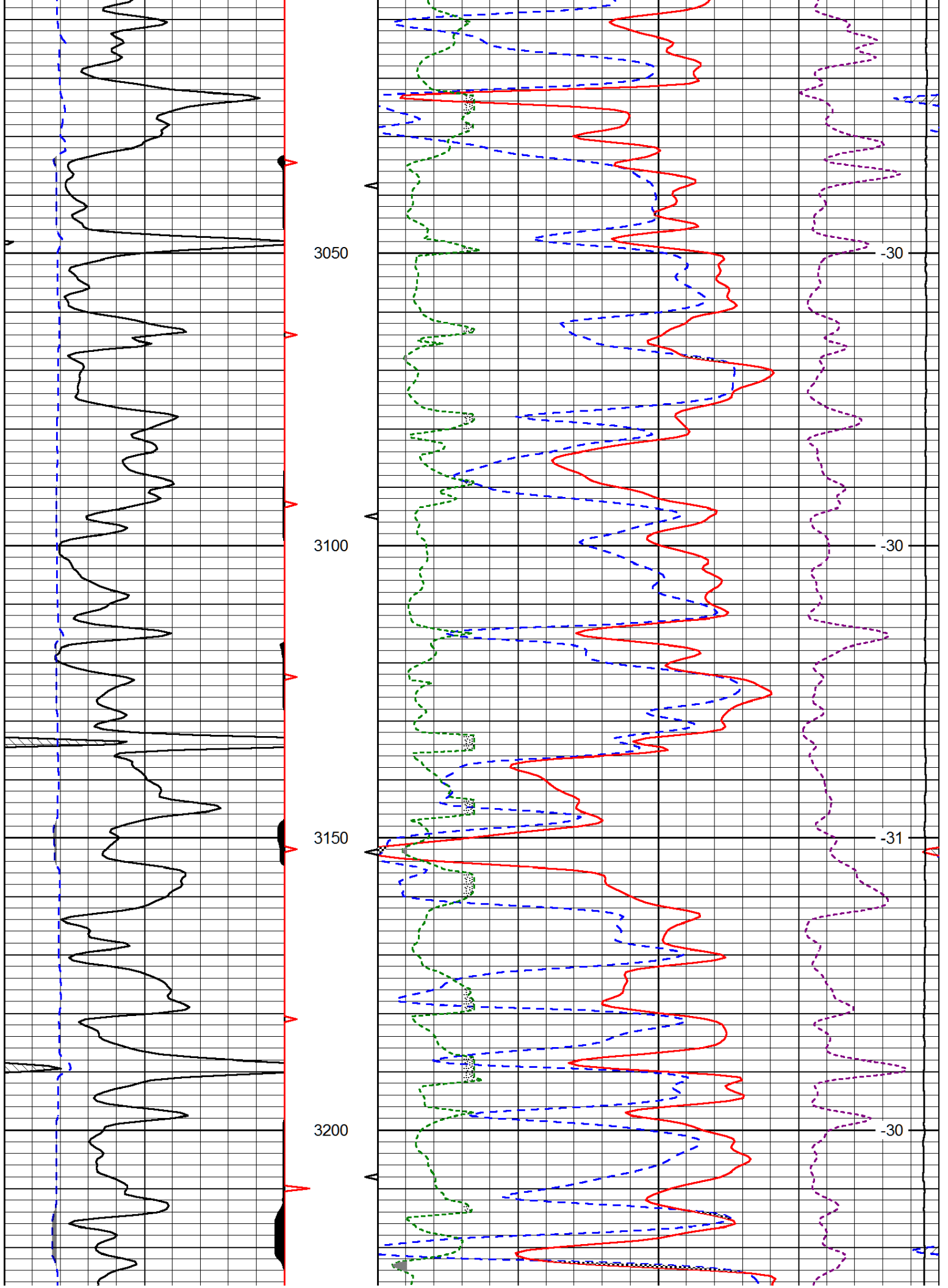
30	Compensated Density		-10
2	Bulk Density		3
15000	Line Tension		0
2.625	DGA	3.425	-0.25
			Correction
			0.25
LSPD			

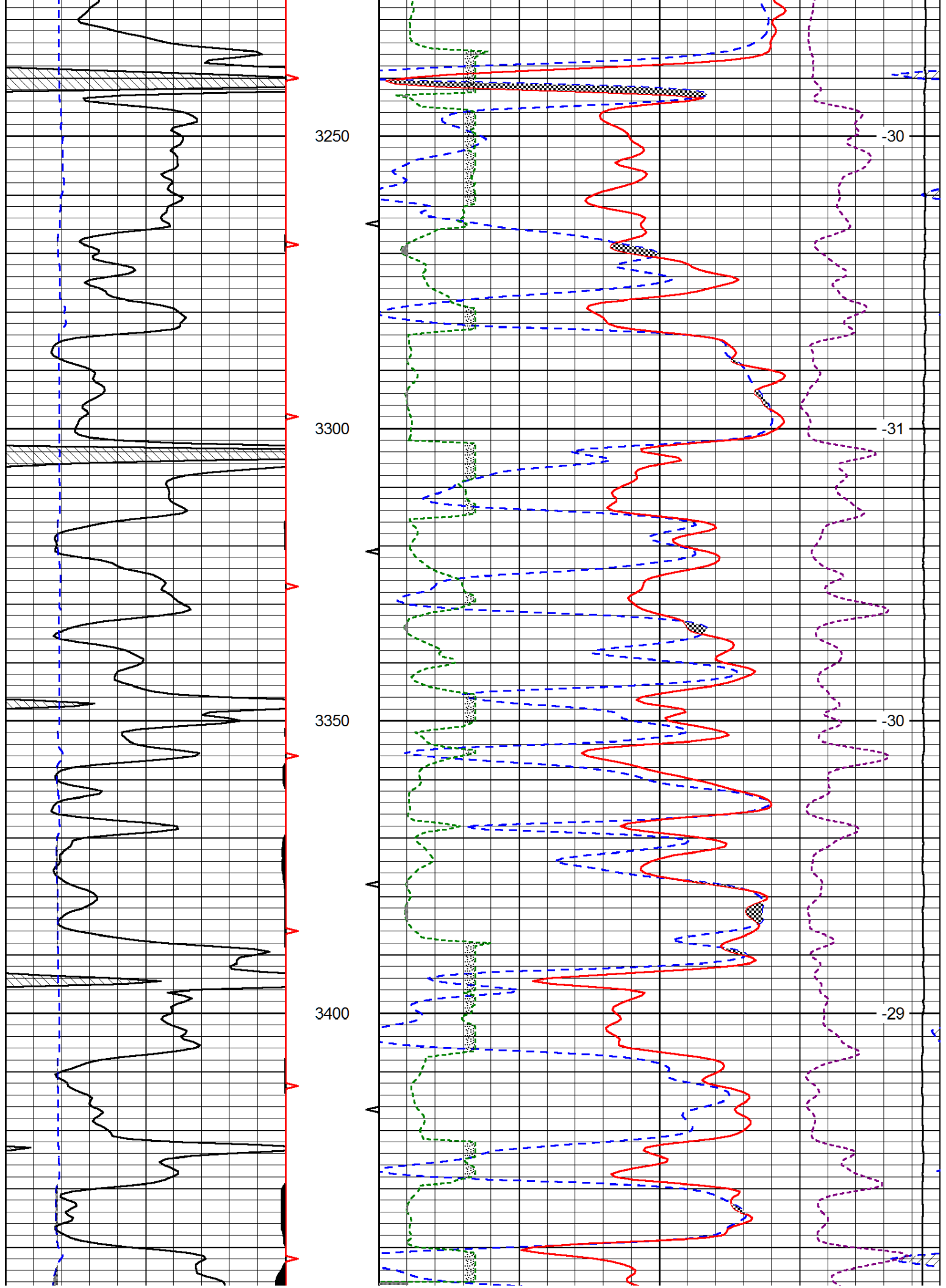


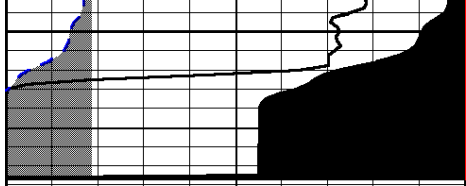


Database File: bach_knape_5hd.db
 Dataset Pathname: dil/bachstck
 Presentation Format: cndlspec
 Dataset Creation: Tue Dec 30 20:19:04 2014
 Charted by: Depth in Feet scaled 1:240

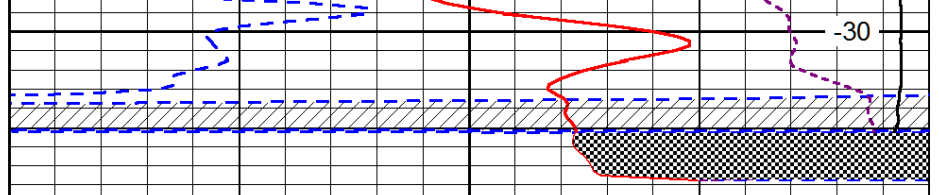








3450



0	Gamma Ray	150
---	-----------	-----

6	Caliper (GAPI)	16
---	----------------	----

30	CNLS	-10
----	------	-----

30	Compensated Density (2.71 ma)	-10
----	-------------------------------	-----

2.625	DGA	3.425	-0.25	Correction	0.25
-------	-----	-------	-------	------------	------

10000	Line Tension	0
-------	--------------	---

LSPD
