



**COMPENSATED
DENSITY/NEUTRON
PE LOG**

Company RED OAK ENERGY, INC.
Well RITA DOIDGE NO. 1-34
Field WC
County WALLACE State KANSAS

Location: 1124' FNL & 330' FWL
API #: 15-199-20437-00-00
Permanent Datum GROUND LEVEL Elevation 3793
Log Measured From KELLY BUSHING 11' A.G.L.
Drilling Measured From KELLY BUSHING
SEC 34 TWP 14S RGE 41W
Elevation
DIL 3804
MEL 3802
G.L. 3793

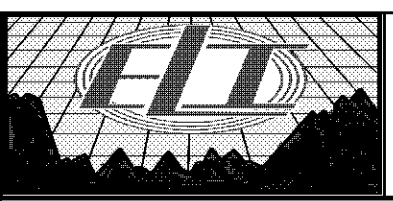
Date	12/2/16	Run Number	ONE
Depth Driller	5235'	Depth Logger	5239'
Bottom Logged Interval	5215'	Top Log Interval	3900'
Casing Driller	456'	Casing Logger	454'
Bit Size	7 7/8	Type Fluid in Hole	CHEMICAL MUD
Density / Viscosity	9.4/61	PH / Fluid Loss	9.5/8.8
Source of Sample	FLOWLINE	Rm @ Meas. Temp	.70@87
Rm @ Meas. Temp	.52@87	Rmc @ Meas. Temp	.84@87
Source of Rmf / Rmc	MEASUREMENT	Rm @ BHT	.48@127
Time Circulation Stopped	2 HOURS	Time Logger on Bottom	
Maximum Recorded Temperature	127 DEG/F	Equipment Number	3802
Location	HAYS, KANSAS	Recorded By	JUSTIN HENRICKSON
Witnessed By	SEAN DEENIHAN		JASON CAPPULLUCCI

<<< Fold Here >>>

All interpretations are opinions based on inferences from electrical or other measurements and we cannot and do not guarantee the accuracy or correctness of any interpretation, and we shall not, except in the case of gross or willful negligence on our part, be liable or responsible for any loss, costs, damages, or expenses incurred or sustained by anyone resulting from any interpretation made by any of our officers, agents or employees. These interpretations are also subject to our general terms and conditions set out in our current Price Schedule.

Comments

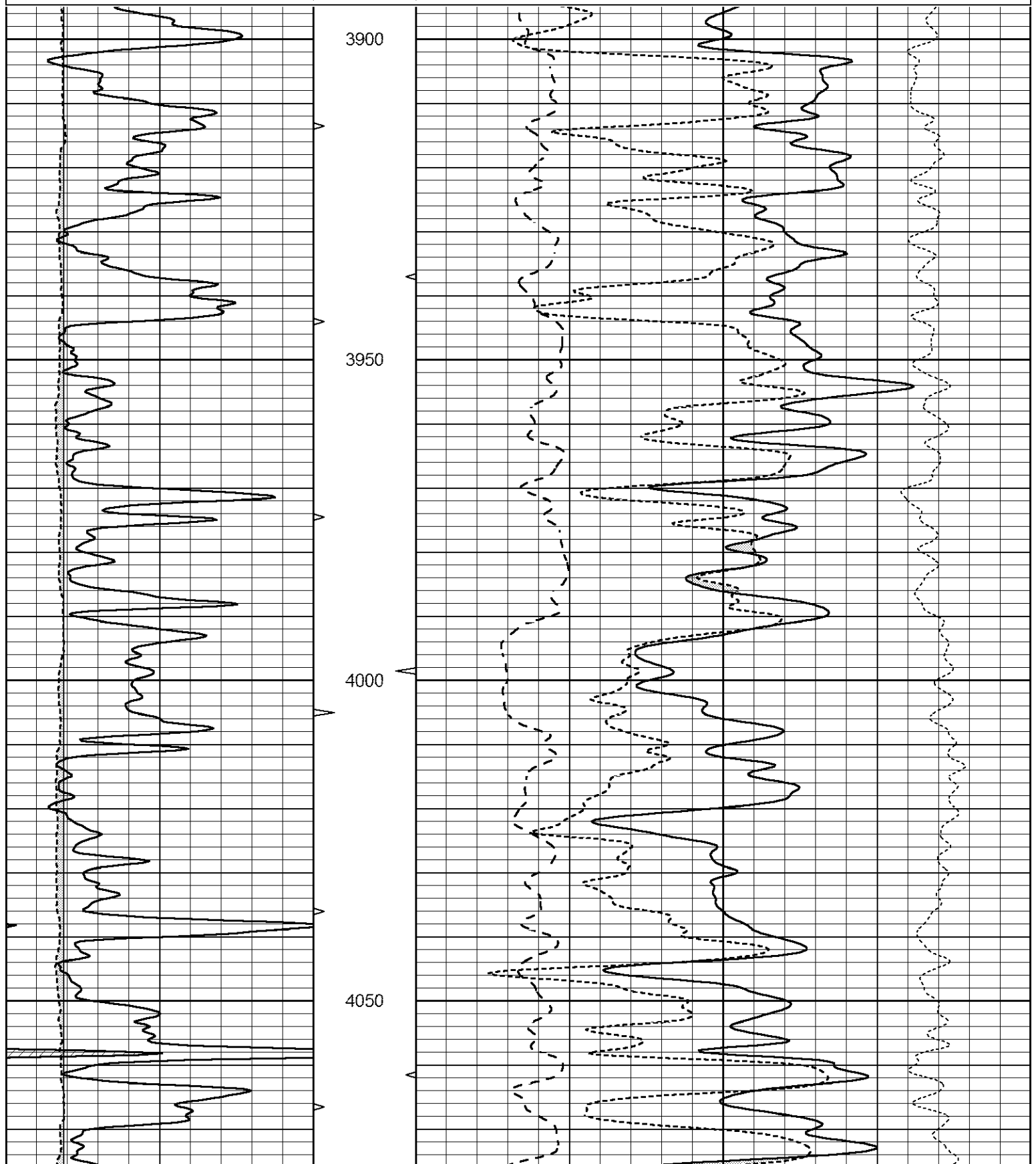
THANK YOU FOR USING ELI WIRELINE SERVICES, HAYS, KS. (785) 628-6395
DIRECTIONS
SHARON SPRINGS KANSAS
8 SOUTH, 7 WEST, NORTH INTO

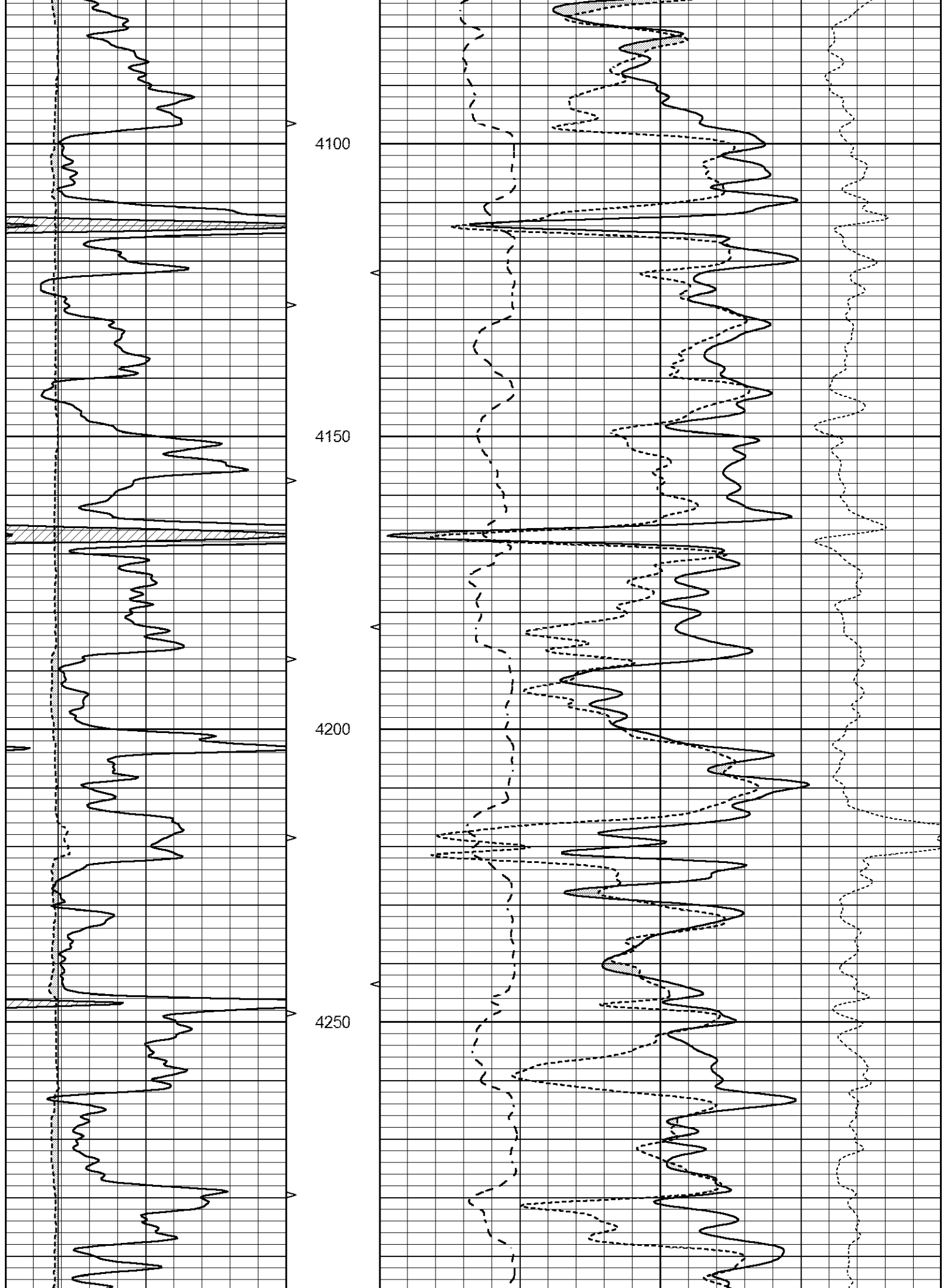


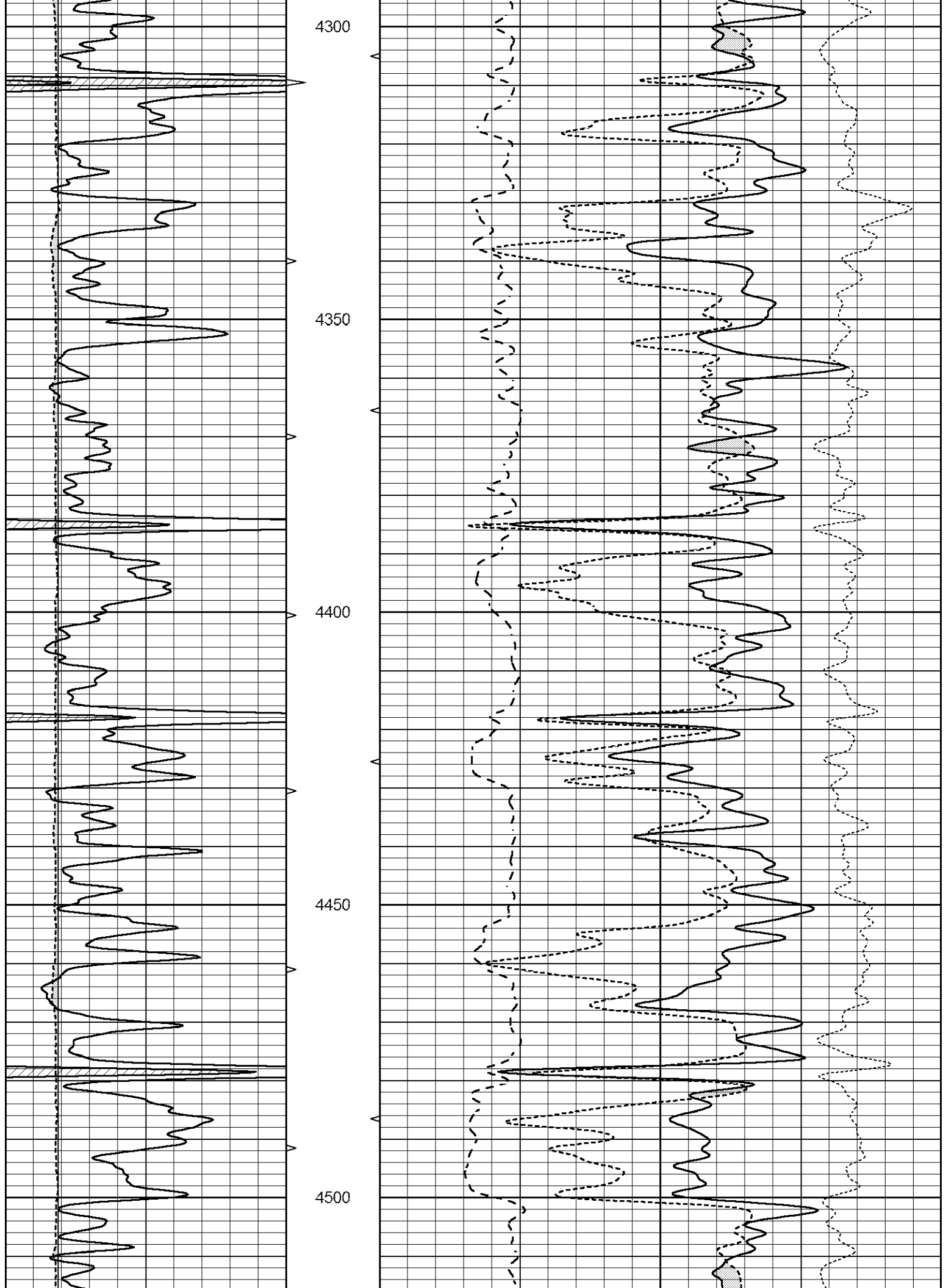
MAIN PASS

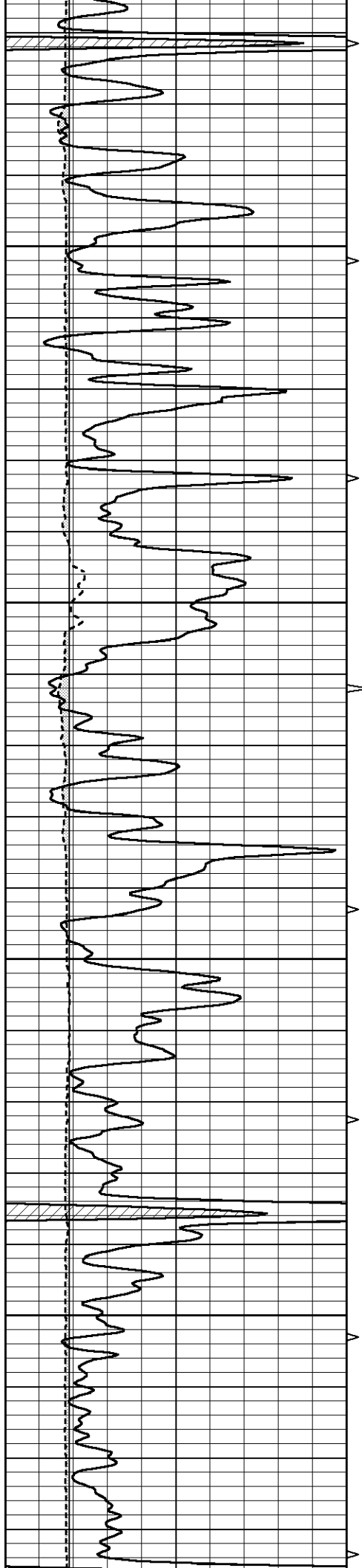
Database File 1106ddn8.db
 Dataset Pathname pass3.1
 Presentation Format _ldt_neu
 Dataset Creation Fri Dec 02 11:11:04 2016
 Charted by Depth in Feet scaled 1:240

0	GAMMA RAY (GAPI)	150	ABHV	30	COMPENSATED DENSITY (pu)		-10
6	CALIPER (in)	16	10 (ft3)	0	COMPENSATED NEUTRON (pu)		-10
			TBHV	0	PE	10	-0.25
			0 (ft3)	10	CORRECTION (g/cc)		0.25







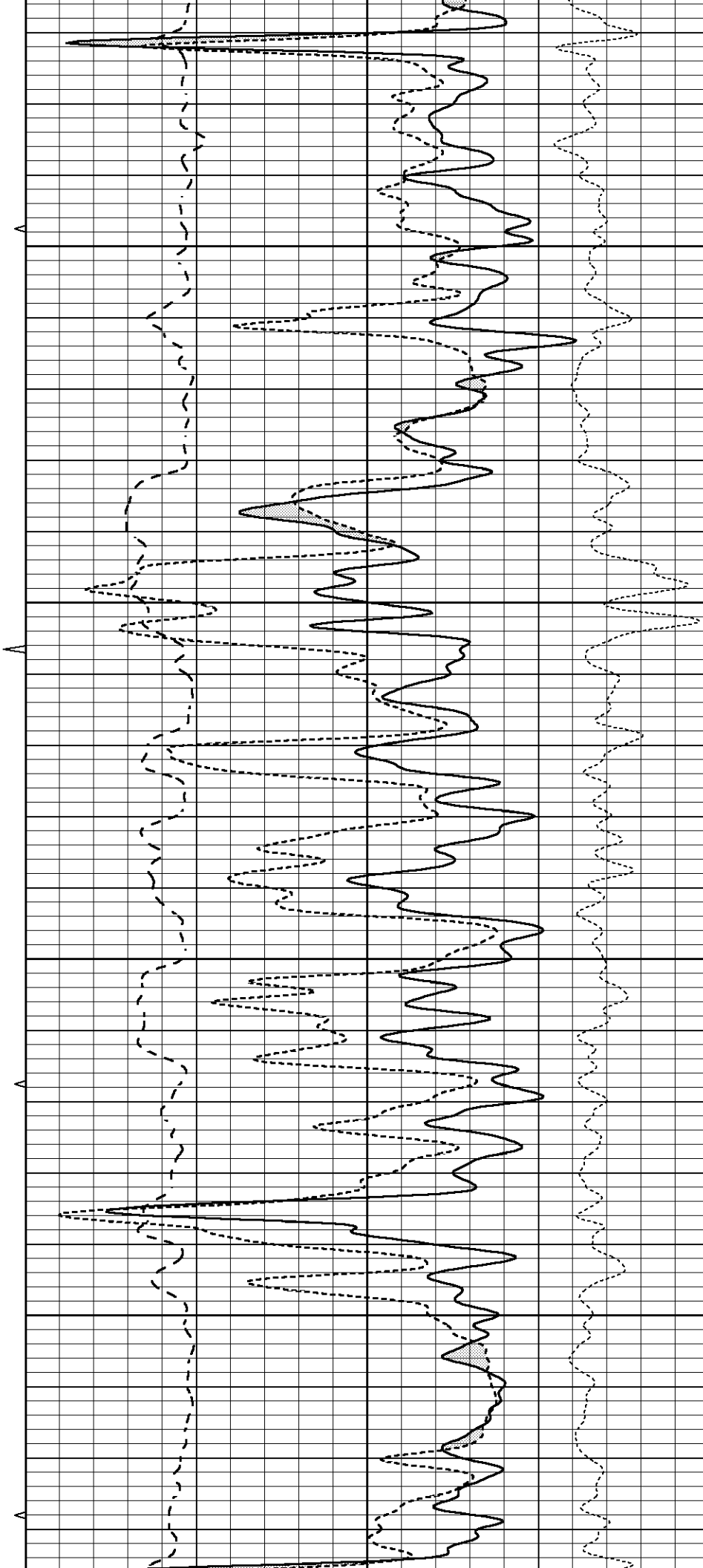


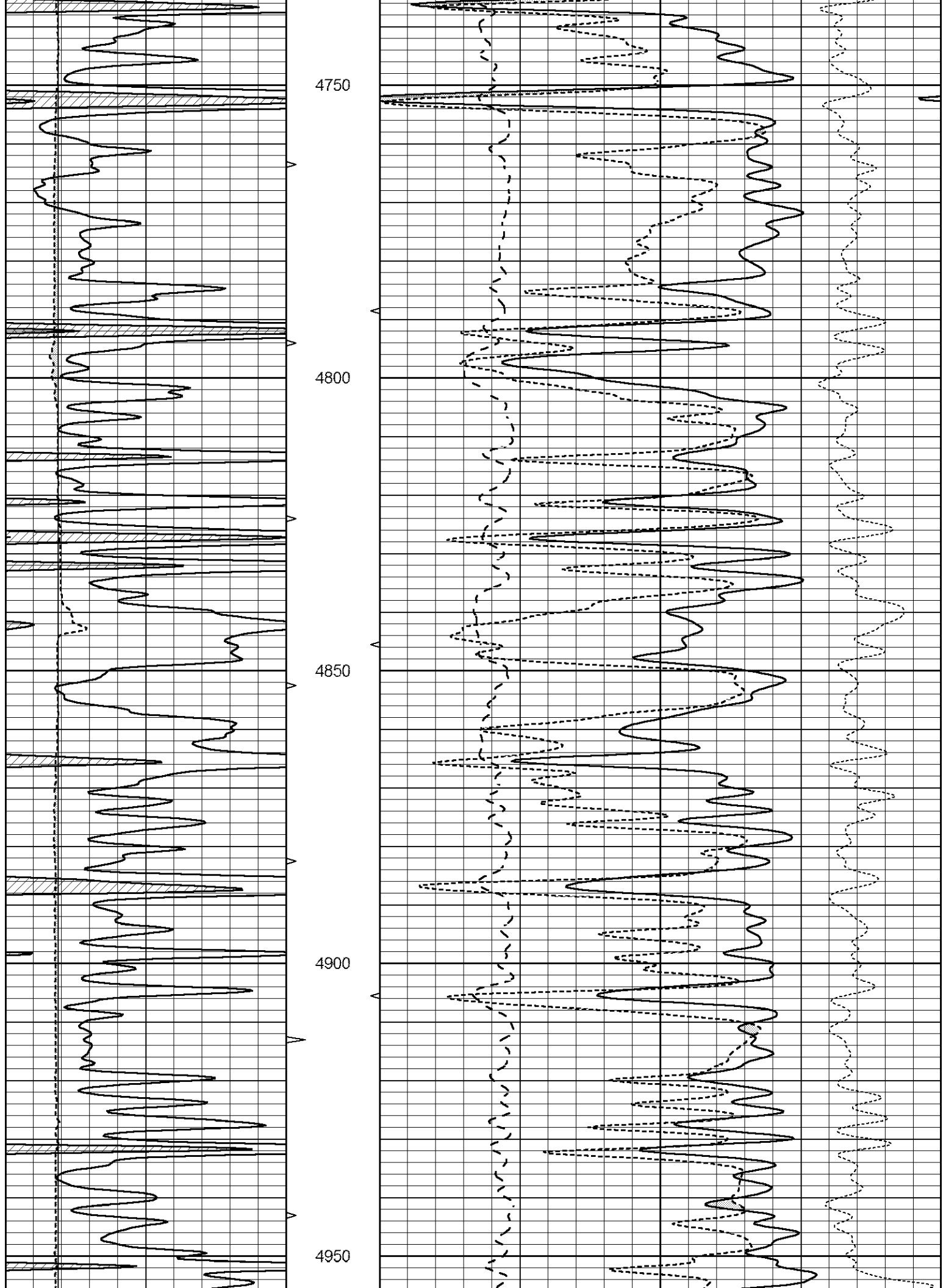
4550

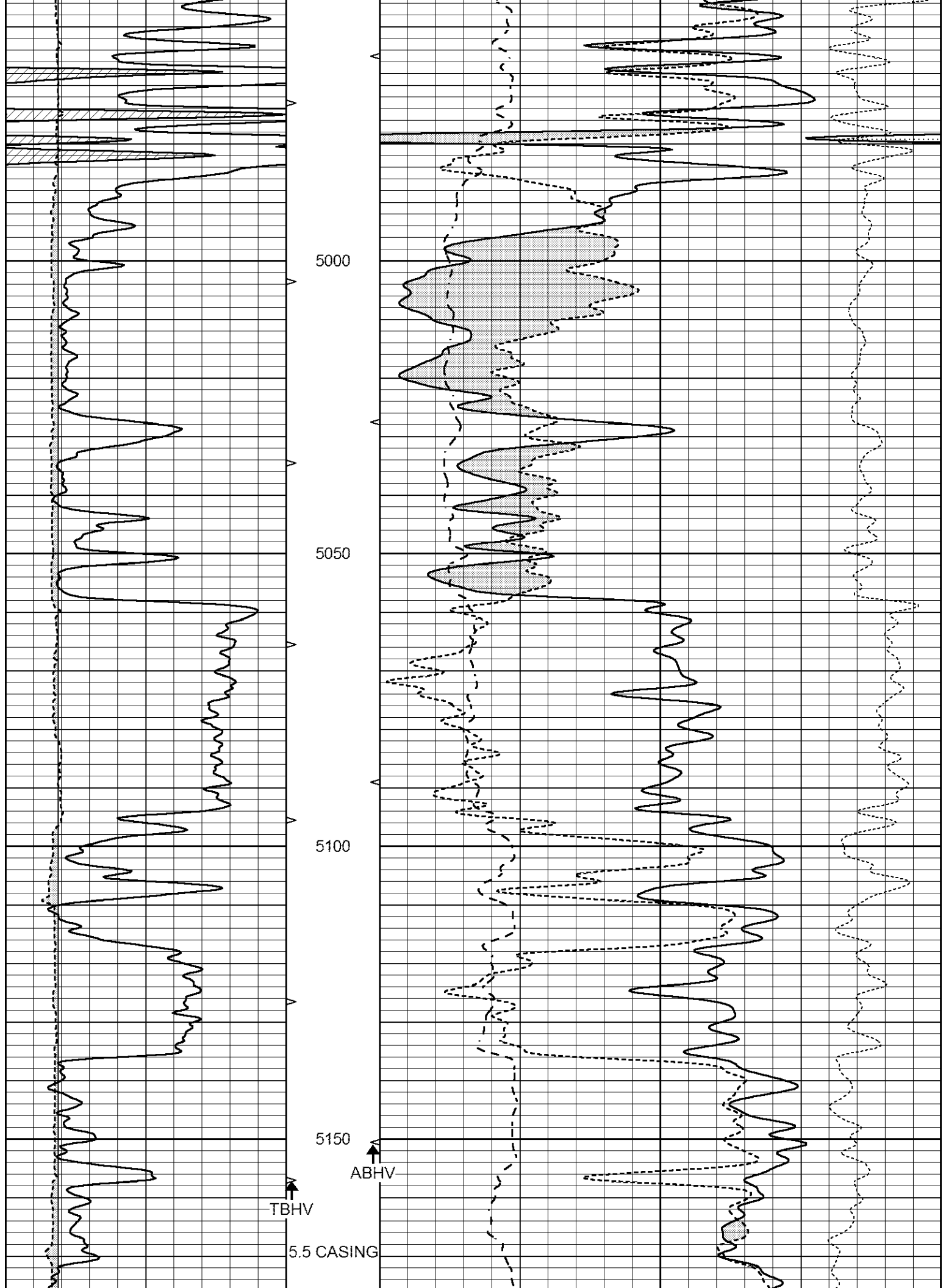
4600

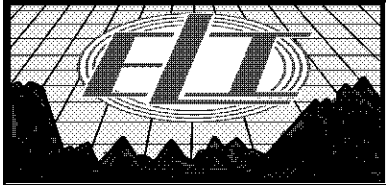
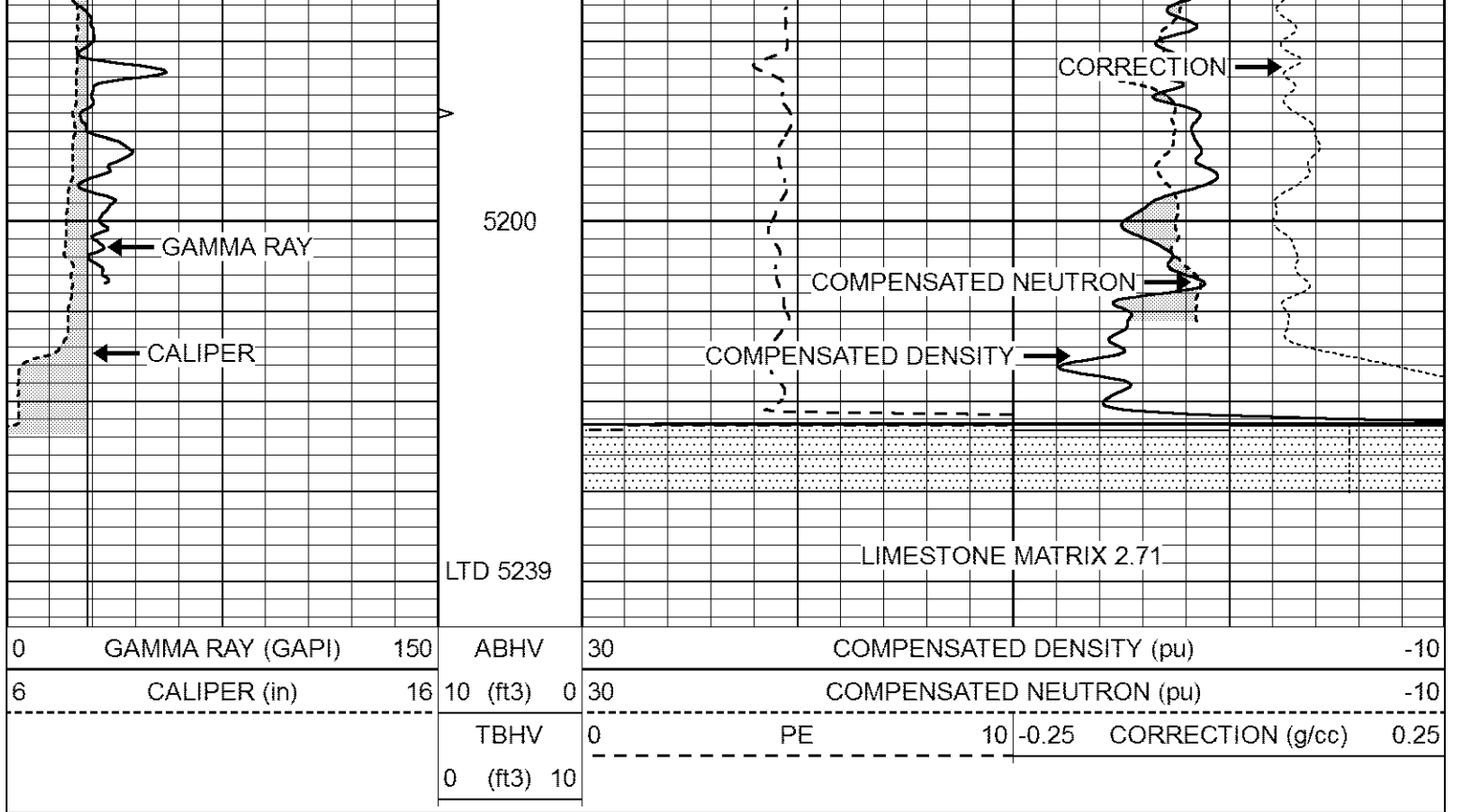
4650

4700





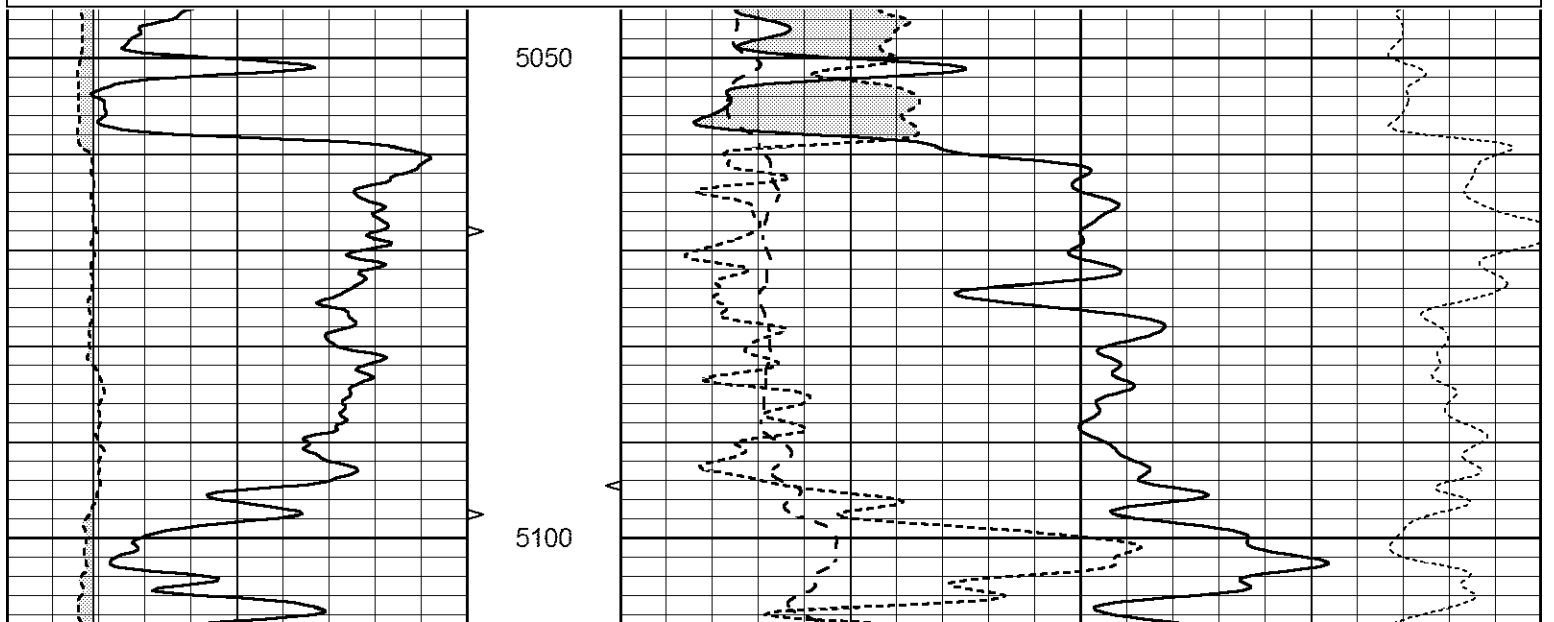


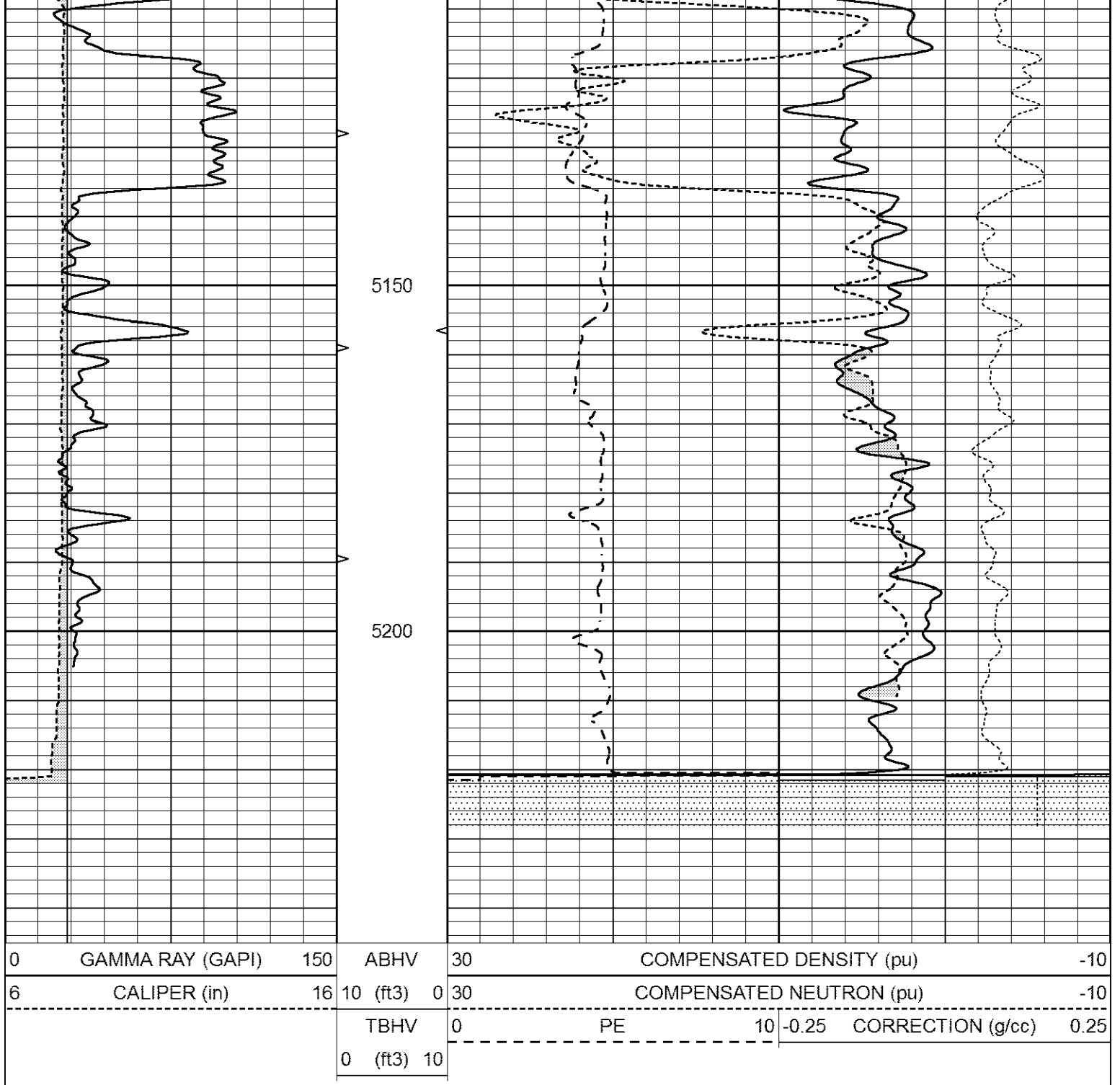


REPEAT SECTION

Database File 1106ddn8.db
 Dataset Pathname pass2.1
 Presentation Format _ldt_neu
 Dataset Creation Fri Dec 02 11:11:38 2016
 Charted by Depth in Feet scaled 1:240

0	GAMMA RAY (GAPI)	150	ABHV	30	COMPENSATED DENSITY (pu)	-10
6	CALIPER (in)	16	10 (ft3) 0	30	COMPENSATED NEUTRON (pu)	-10
			TBHV	0	PE	10 -0.25 CORRECTION (g/cc) 0.25
			0 (ft3) 10			





Calibration Report

Database File 1106ddn8.db
 Dataset Pathname pass2.10
 Dataset Creation Fri Dec 02 10:35:30 2016

Dual Induction Calibration Report

Serial-Model: FW1410-55-Probe
 Surface Cal Performed: Thu Mar 12 09:27:11 2015
 Downhole Cal Performed: Thu Mar 12 09:29:20 2015
 After Survey Verification Performed: Thu Mar 12 09:29:20 2015

Surface Calibration

Loop:	Readings		References		Results		
	Air	Loop	Air	Loop	m	b	
Deep	0.014	0.050	1.000	100.000	gamma/cm	010.505	5.524

Deep	0.011	0.656	V	1.000	400.000	mmho/m	618.595	-5.524
Medium	-0.000	0.731	V	1.000	464.000	mmho/m	632.856	1.197
Internal:	Zero	Cal		Zero	Cal		m	b
Deep	0.007	0.649	V	0.000	400.000	mmho/m	623.784	-4.595
Medium	0.004	0.743	V	0.000	464.000	mmho/m	627.284	-2.251

Downhole Calibration								
	Readings			References			Results	
	Zero	Cal		Zero	Cal		m'	b'
Deep	-0.824	395.917	mmho/m	-0.976	397.550	mmho/m	1.004	-0.149
Medium	3.565	471.327	mmho/m	3.468	471.590	mmho/m	1.001	-0.099
LL3		7.503	V		1500.000	Ohm-m		
		0.001	V		20.000	Ohm-m		
		-7.481	V		3745.000	mmho-m		

After Survey Verification								
	Readings			Targets			Results	
	Zero	Cal		Zero	Cal		m'	b'
Deep	0.000	0.000	mmho/m	-0.824	395.917	mmho/m	1.000	0.000
Medium	0.000	0.000	mmho/m	3.565	471.327	mmho/m	1.000	0.000
LL3		0.000	Ohm-m		1500.000	Ohm-m		
		0.000	Ohm-m		20.000	Ohm-m		
		0.000	mmho-m		3745.000	mmho-m		

Litho Density Calibration Report
Serial: 140703
Model: V4_10P
Source Number: 74GBq-19

Master Calibration				Performed: Wed Feb 11 16:57:09 2015				
	Background	Aluminum		Magnesium				
Window 1	594.39	6349.98		29204.00	cps			
Window 2	47.14	1460.46		7334.94	cps			
Window 4	261.52	1478.45		6338.23	cps			
Window 5	633.19	10381.10		19565.80	cps			
Window 6	49.78	1758.01		3436.39	cps			
Window 8	302.39	3297.16		6093.06	cps			
Bulk Density	-	2.6020		1.6830	g/cc			
Pe	-	3.0000		2.5070	b/e			
LS Alpha:	:-1.8570		SS Alpha:	:-0.7600		LS CPE:	: 1.1652	
LS Beta:	: 157430.0395		SS Beta:	: 22665.8398		SS CPE:	: 1.4739	

Before Survey Background Counts Verification				Performed: Wed Dec 31 18:00:00 1969			
Window 1	0.00		cps				
Window 2	0.00		cps				
Window 4	0.00		cps				
Window 5	0.00		cps				
Window 6	0.00		cps				
Window 8	0.00		cps				

After Survey Background Counts Verification				Performed: Wed Dec 31 18:00:00 1969			
Window 1	0.00		cps				
Window 2	0.00		cps				

Window 4	0.00	cps
Window 5	0.00	cps
Window 6	0.00	cps
Window 8	0.00	cps

Lithodensity Caliper Calibration

Performed: Wed Feb 11 16:57:09 2015

Results		Readings		References (in)		Gain	Offset
Low	High	Low	High				
5280.9	9455.1	8.6	14.0			0.0	1.2

Before Survey Caliper Verification

Performed:

	Reference	Reading
Caliper (in)	_____	_____

After Survey Caliper Verification

Performed:

	Reference	Reading
Caliper (in)	_____	_____

Compensated Neutron Calibration Report

Serial Number: 080621PMC
Tool Model: NABORS

PRE-SURVEY VERIFICATION

Detector	Readings	Measured	Target
Short Space	cps		
Long Space	cps	pu	pu

POST-SURVEY VERIFICATION

Detector	Readings	Measured	Target
Short Space	cps		
Long Space	cps	pu	pu

Gamma Ray Calibration Report

Serial Number: 070558
Tool Model: Probe1
Performed: Wed Jun 29 08:29:10 2016

Calibrator Value: 1.0 GAPI

Background Reading: 0.0 cps
Calibrator Reading: 1.0 cps

Sensitivity: 0.3000 GAPI/cps