



# MICRO LOG

Company RED OAK ENERGY, INC.  
 Well RITA DOIDGE NO. 1-34  
 Field WC  
 County WALLACE State KANSAS

Location: 1124' FNL & 330' FWL  
 API #: 15-199-20437-00-00  
 SEC 34 TWP 14S RGE 41W  
 Permanent Datum GROUND LEVEL Elevation 3793  
 Log Measured From KELLY BUSHING 11' A.G.L.  
 Drilling Measured From KELLY BUSHING

Company RED OAK ENERGY, INC.  
 Well RITA DOIDGE NO. 1-34  
 Field WC  
 County WALLACE  
 State KANSAS

Date	12/2/16		
Run Number	TWO		
Depth Driller	5235'		
Depth Logger	5239'		
Bottom Logged Interval	5237'		
Top Log Interval	3900'		
Casing Driller	456'		
Casing Logger	454'		
Bit Size	7 7/8		
Type Fluid in Hole	CHEMICAL MUD	CHLORIDES 6000 PPM	
Density / Viscosity	9.4/61		
PH / Fluid Loss	9.5/8.8		
Source of Sample	FLOWLINE		
Rm @ Meas. Temp	.70@87		
Rmt @ Meas. Temp	.52@87		
Rmc @ Meas. Temp	.84@87		
Source of Rmf / Rmc	MEASUREMENT		
Rm @ BHT	.48@127		
Time Circulation Stopped	2 HOURS		
Time Logger on Bottom			
Maximum Recorded Temperature	127 DEG/F		
Equipment Number	3802		
Location	HAYS, KANSAS		
Recorded By	JUSTIN HENRICKSON	JASON CAPPULLUCCI	
Witnessed By	SEAN DEENIHAN		

<<< Fold Here >>>

All interpretations are opinions based on inferences from electrical or other measurements and we cannot and do not guarantee the accuracy or correctness of any interpretation, and we shall not, except in the case of gross or willful negligence on our part, be liable or responsible for any loss, costs, damages, or expenses incurred or sustained by anyone resulting from any interpretation made by any of our officers, agents or employees. These interpretations are also subject to our general terms and conditions set out in our current Price Schedule.

### Comments

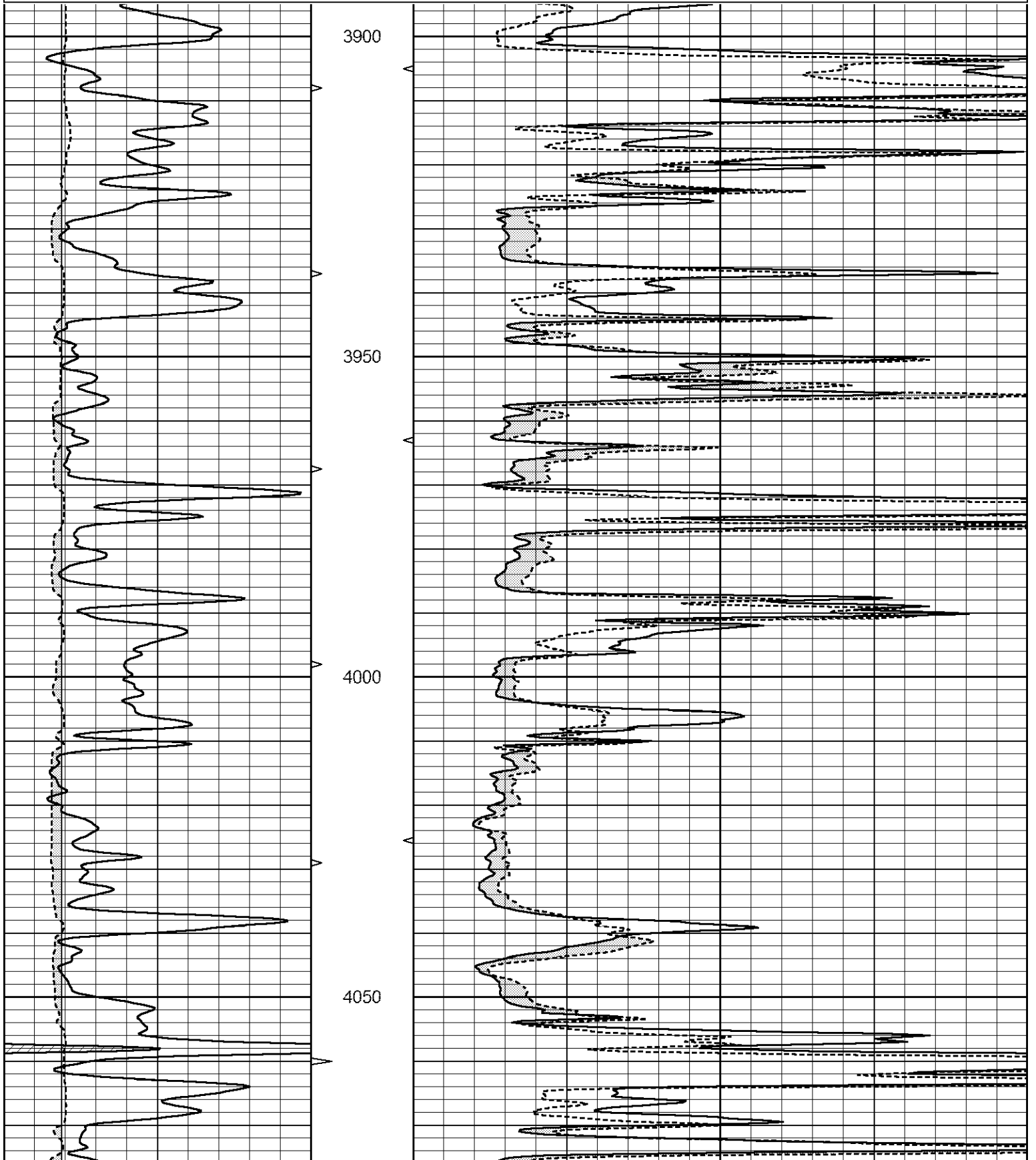
THANK YOU FOR USING ELI WIRELINE SERVICES, HAYS, KS. ( 785 ) 628-6395  
 DIRECTIONS  
 SHARON SPRINGS KANSAS  
 8 SOUTH, 7 WEST, NORTH INTO

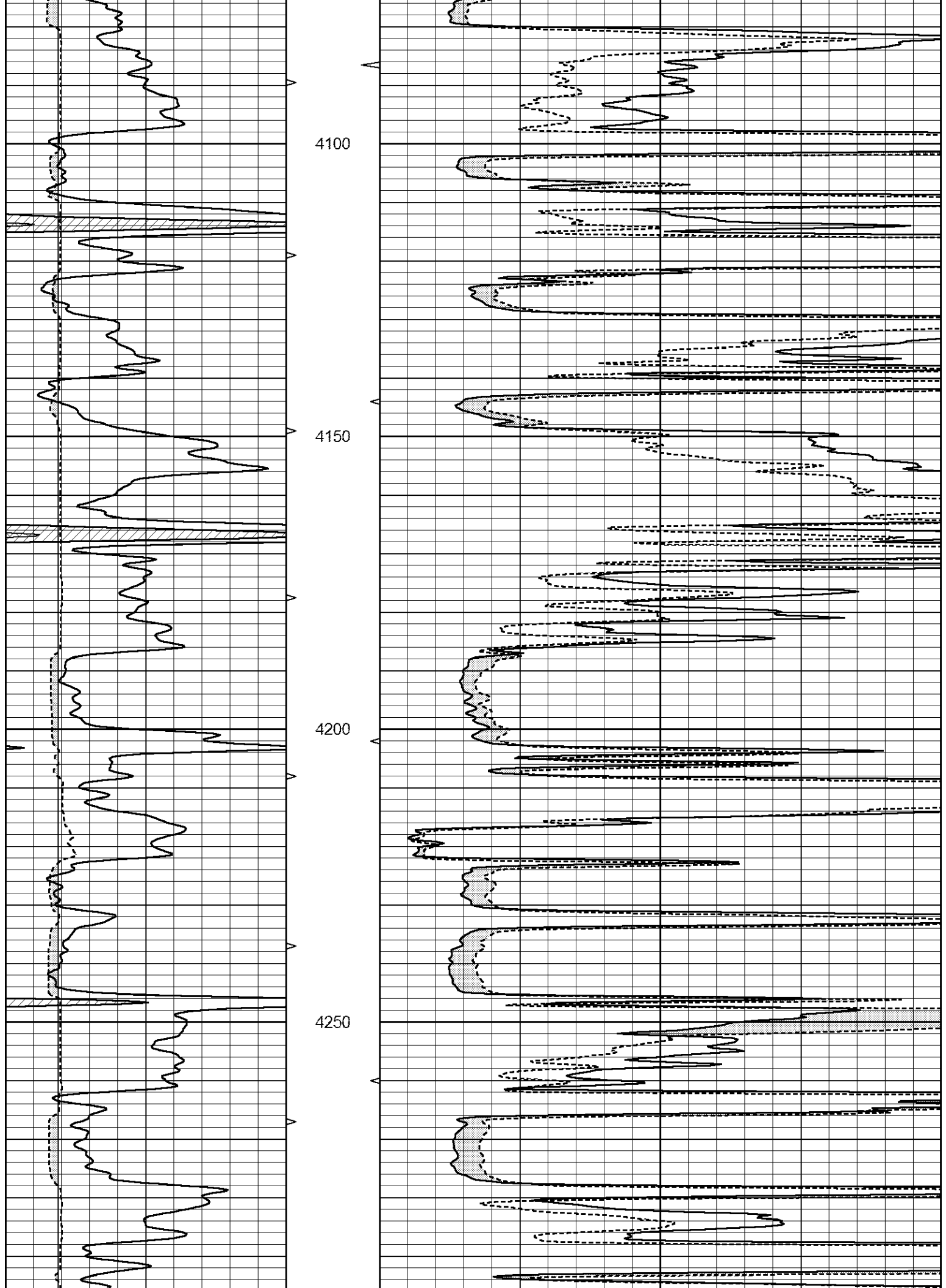


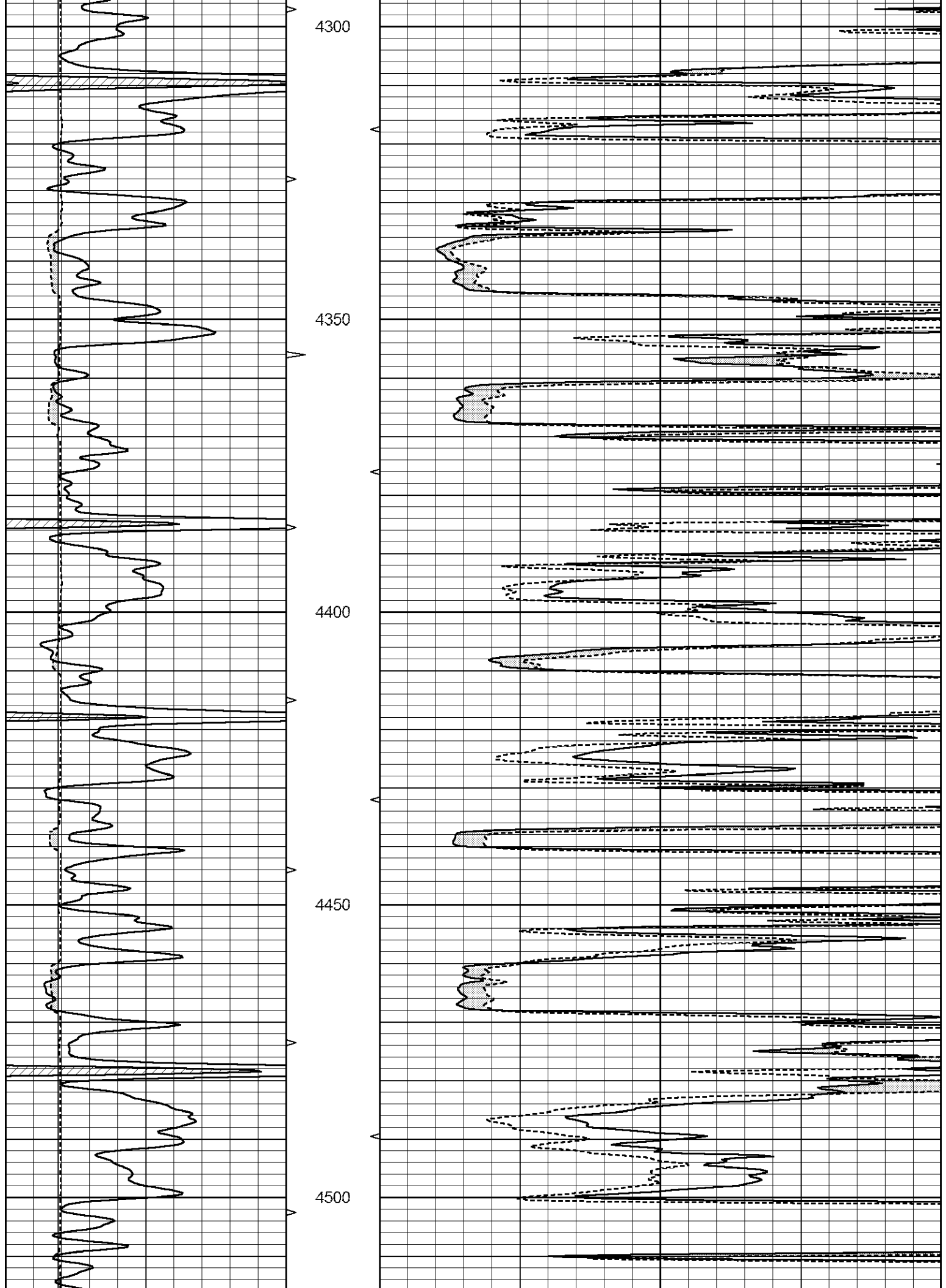
# MAIN PASS

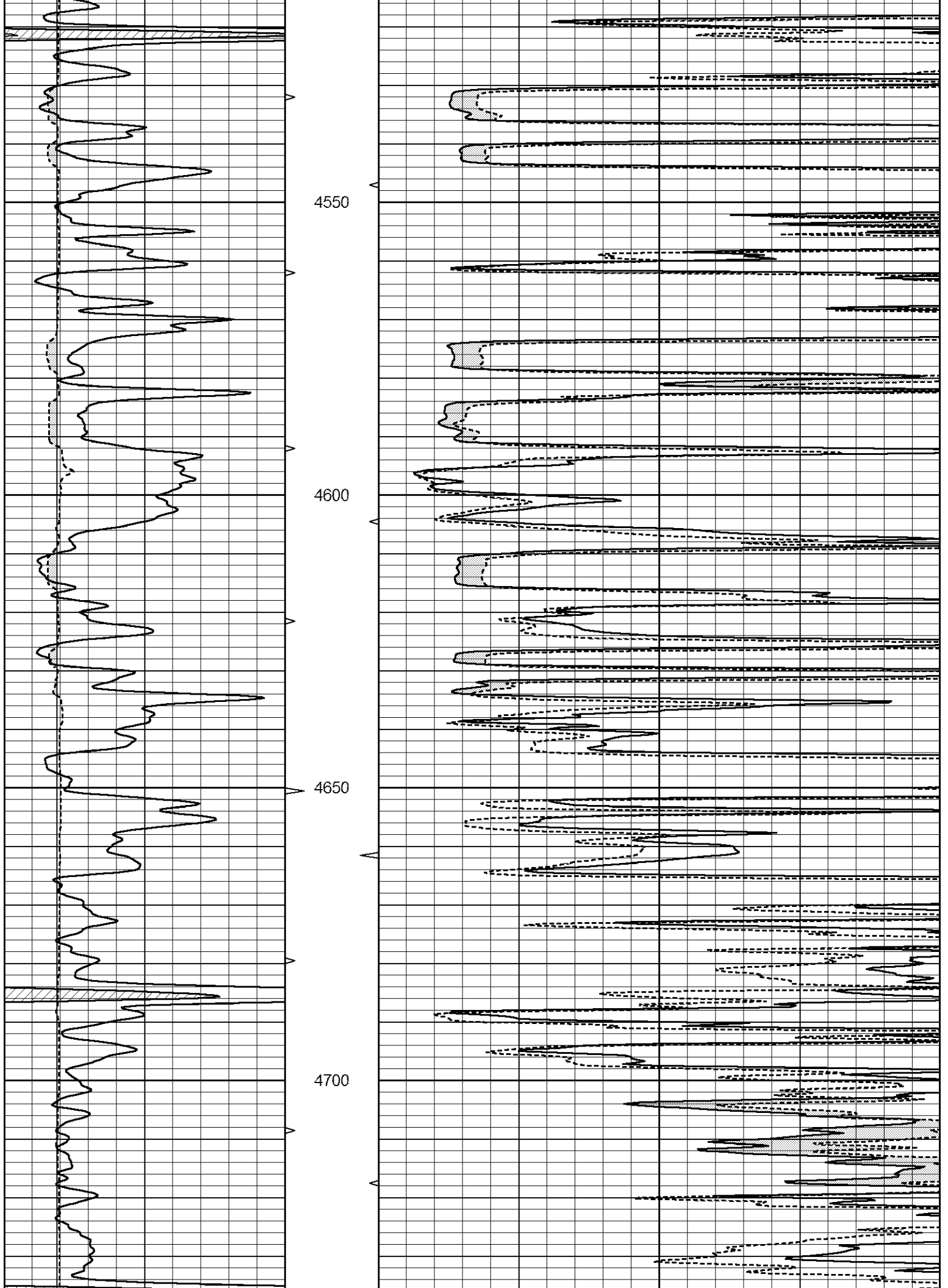
Database File 1106ddn8.db  
 Dataset Pathname pass7.1  
 Presentation Format \_micro  
 Dataset Creation Fri Dec 02 13:27:18 2016  
 Charted by Depth in Feet scaled 1:240

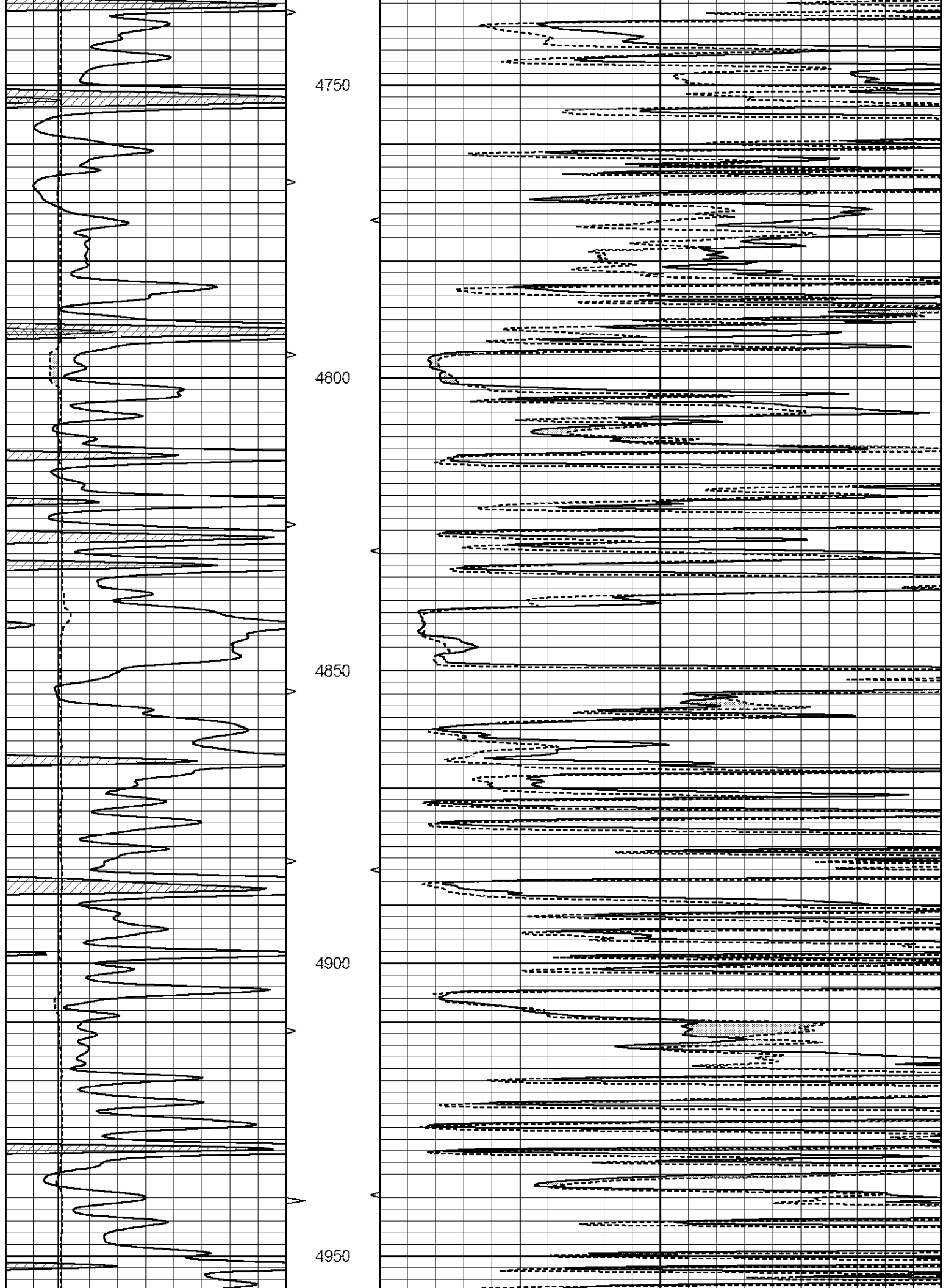
0	GAMMA RAY (GAPI)	150	ABHV	0	MEL1.5 (Ohm-m)	40
6	CALIPER (in)	16	10 (ft3)	0 0	MEL2.0 (Ohm-m)	40
			TBHV			
			0 (ft3)	10		

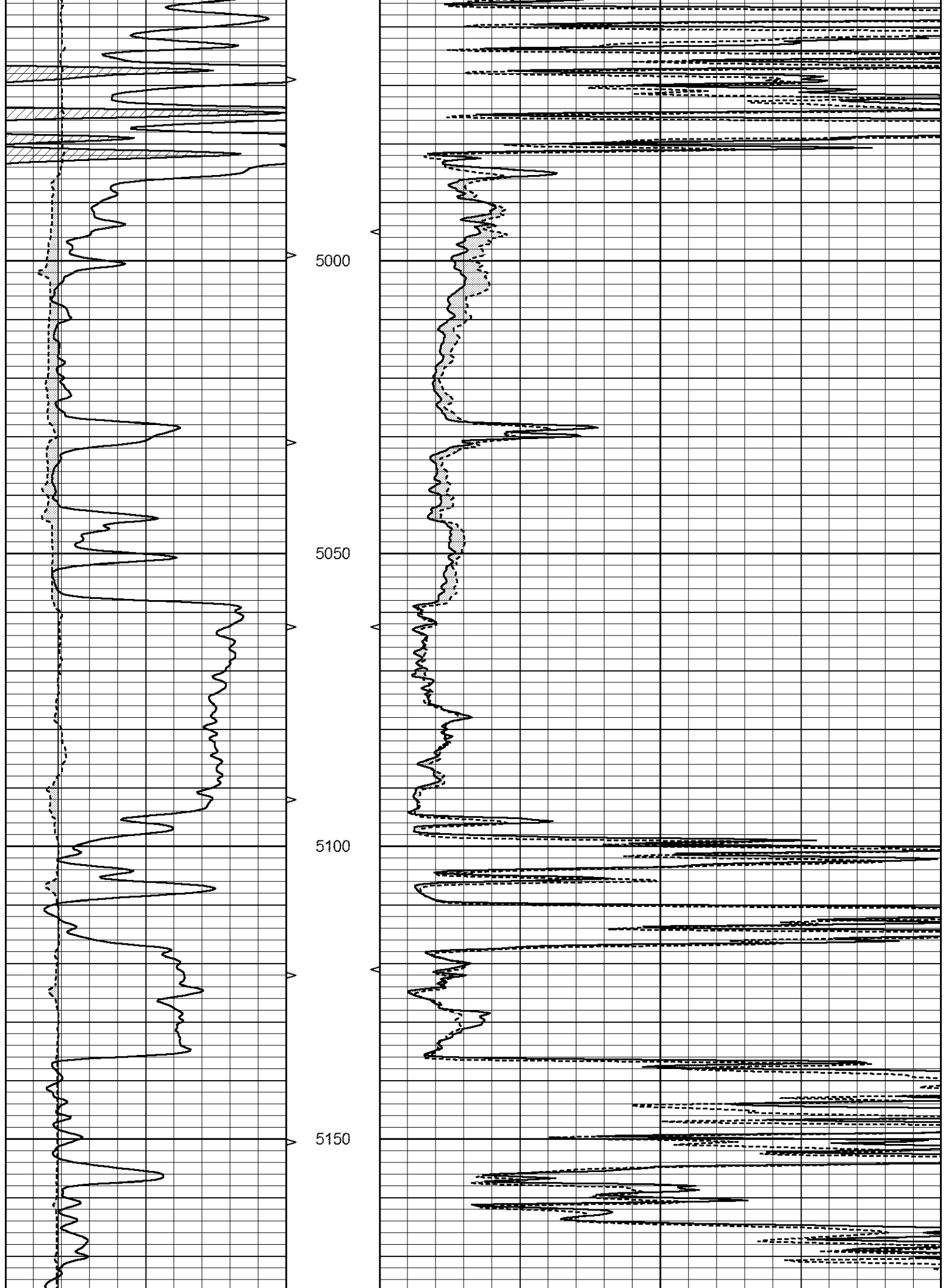


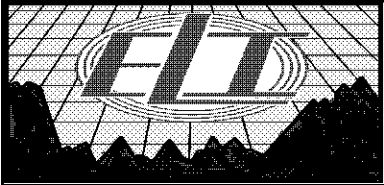
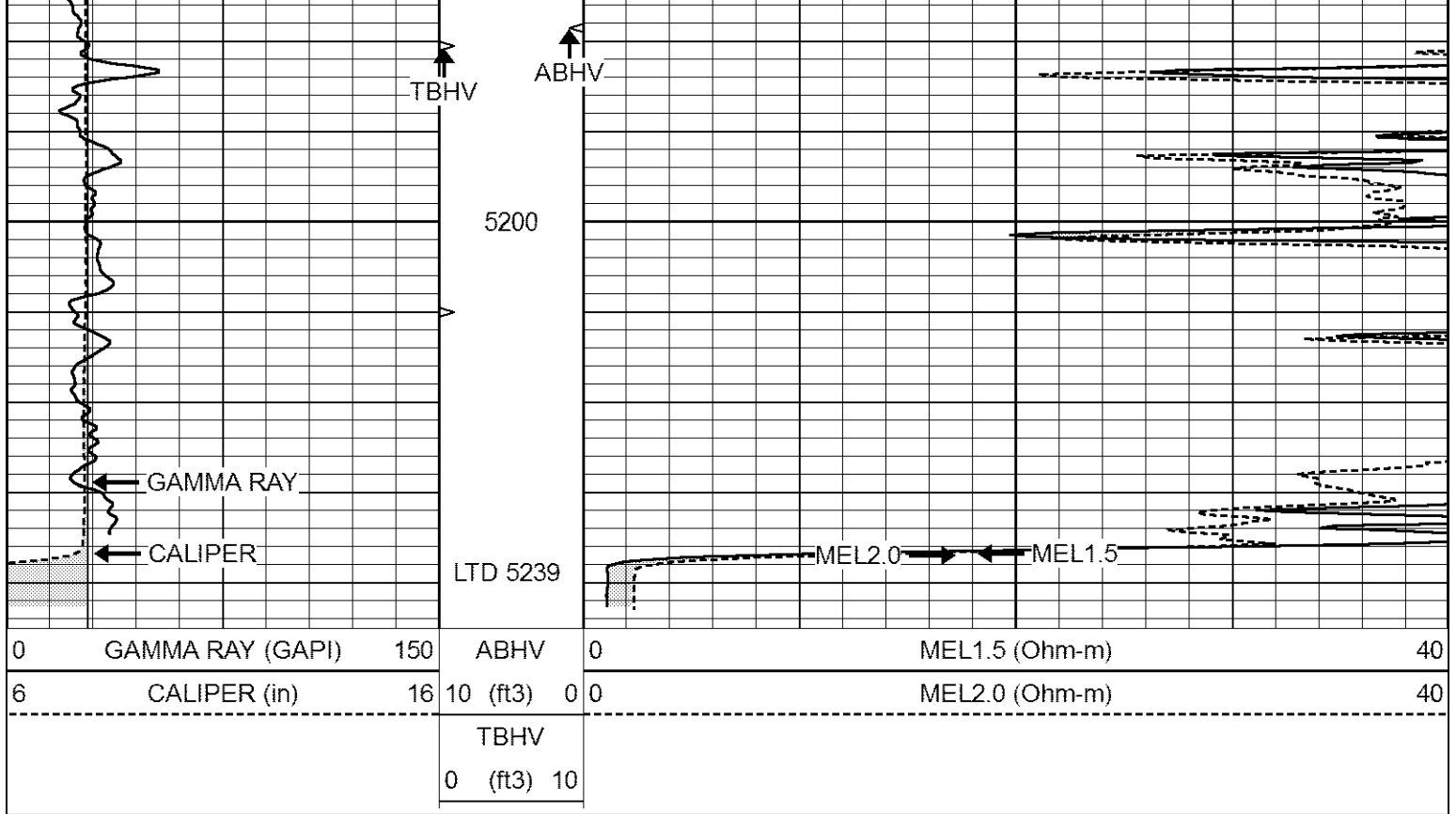








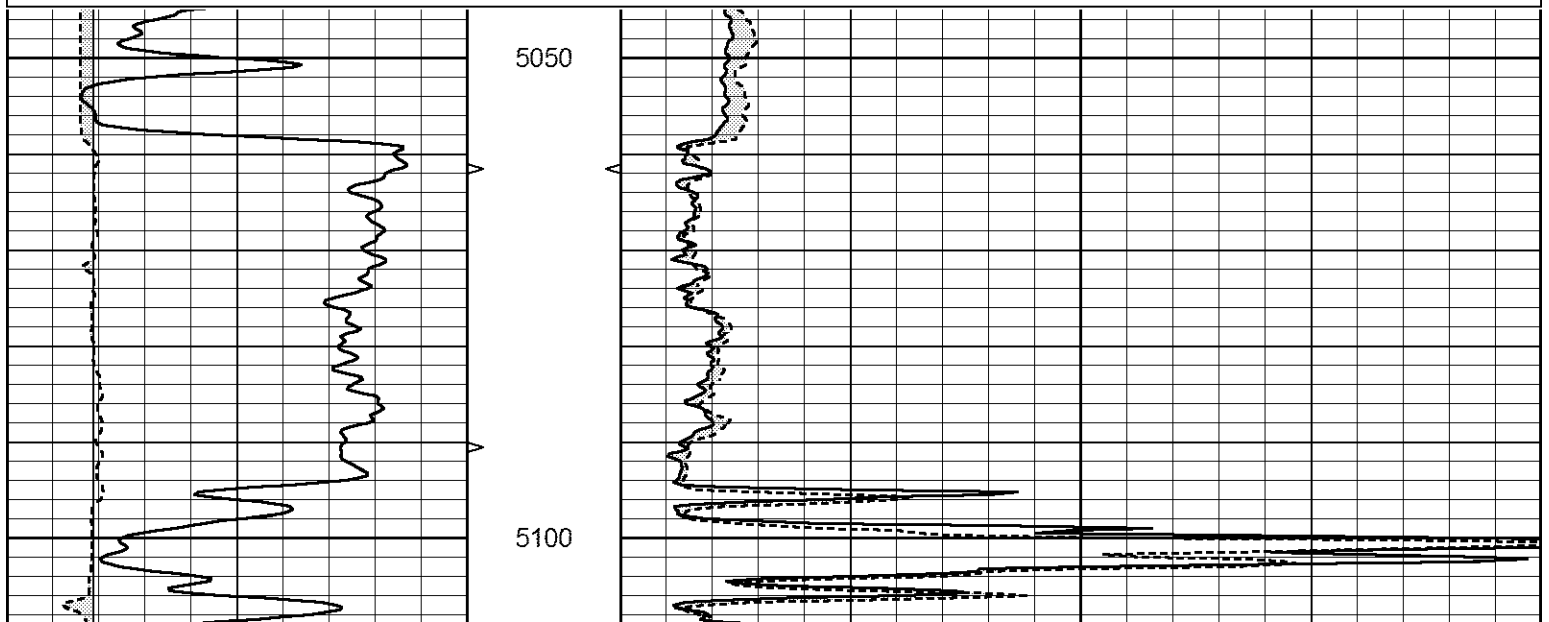


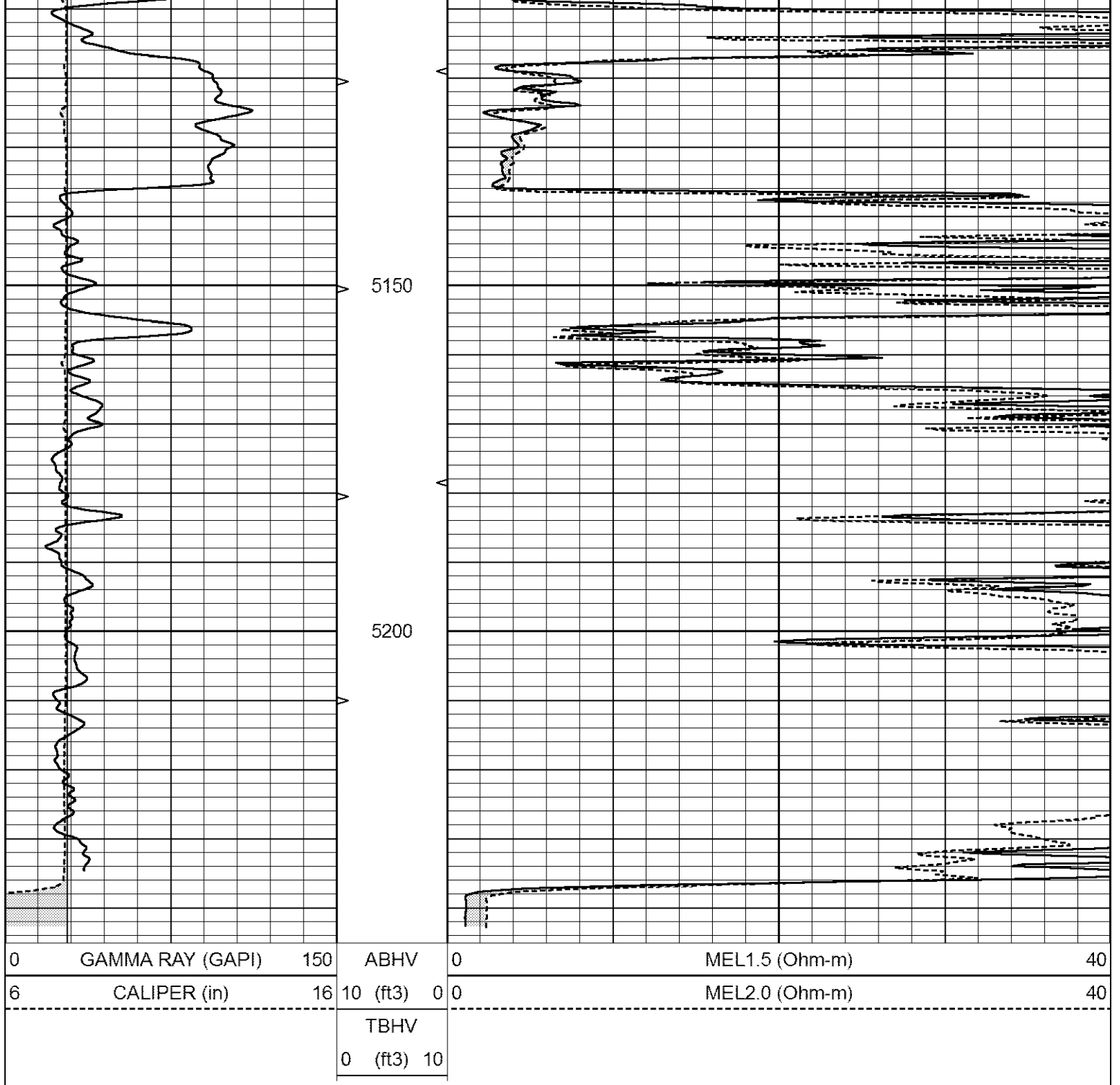


# REPEAT SECTION

Database File 1106ddn8.db  
 Dataset Pathname pass5.1  
 Presentation Format \_micro  
 Dataset Creation Fri Dec 02 13:28:07 2016  
 Charted by Depth in Feet scaled 1:240

0	GAMMA RAY (GAPI)	150	ABHV	0	MEL1.5 (Ohm-m)	40
6	CALIPER (in)	16	10 (ft3)	0 0	MEL2.0 (Ohm-m)	40
			TBHV			
			0 (ft3)	10		





### Calibration Report

Database File 1106ddn8.db  
 Dataset Pathname pass5.1  
 Dataset Creation Fri Dec 02 13:28:07 2016

### MICRO\_USR Calibration Report

Serial Number:	070911	
Tool Model:	ProbeL	
Performed:	Wed Nov 04 20:04:04 2015	
Caliper Calibration:	Gain=4.161	Offset=1.700
References	Low Cal	High Cal
Readings	8.000	14.000
	1.333	2.775

1.5" Calibration:	Gain=27.000	Offset=0.000
-------------------	-------------	--------------

1.5 Calibration:	Gain=37.000	Offset=0.000
References	Low Cal 0.000	High Cal 20.000
Readings	0.004	0.843

2" Calibration:	Gain=35.000	Offset=0.650
References	Low Cal 0.000	High Cal 20.000
Readings	0.021	0.810

Microlog Calibration Report

Serial-Model: Performed:	070911-ProbeL Sat Apr 11 01:13:01 2015
-----------------------------	---

	Readings			References			Results	
	Zero	Cal		Zero	Cal		m	b
Normal	0.0002	0.4836	V	0.0000	10.0000	Ohm-m	20.6908	-0.0051
Inverse	0.0018	0.6297	V	0.0000	10.0000	Ohm-m	15.9263	-0.0282
Caliper	0.0000	1.0000	V	0.0000	1.0000	in	1.0000	0.0000

Gamma Ray Calibration Report

Serial Number:	7
Tool Model:	Probe1
Performed:	Wed Jun 29 11:10:58 2016
Calibrator Value:	1.0                      GAPI
Background Reading:	0.0                      cps
Calibrator Reading:	1.0                      cps
Sensitivity:	0.4300                      GAPI/cps