



MICRO LOG

Company L.D. DRILLING, INC.  
Well DEEDS #1-15  
Field WILDCAT  
County CHEYENNE  
State KANSAS

Company L.D. DRILLING, INC.  
Well DEEDS #1-15  
Field WILDCAT  
County CHEYENNE State KANSAS

Location: API # : 15-023-21461-00-00  
2254' FSL & 1978' FEL  
SEC 15 TWP 5S RGE 37W  
Permanent Datum GROUND LEVEL Elevation 3395'  
Log Measured From KELLY BUSHING 5' A.G.L.  
Drilling Measured From KELLY BUSHING  
Other Services CDL/CNL DIL  
Elevation K.B. 3400  
D.F. 3398  
G.L. 3395

Date	03/16/17		
Run Number	TWO		
Depth Driller	5050		
Depth Logger	5048		
Bottom Logged Interval	5046		
Top Log Interval	3700		
Casing Driller	8 5/8" @ 348		
Casing Logger	348		
Bit Size	7 7/8"		
Type Fluid in Hole	CHEMICAL MUD	CHLORIDES 3400 PPM	
Density / Viscosity	9.360		
pH / Fluid Loss	10.5/7.2		
Source of Sample	FLOWLINE		
Rm @ Meas. Temp	1.0@74		
Rmt @ Meas. Temp	.75@74		
Rmc @ Meas. Temp	1.20@74		
Source of Rmf / Rmc	MEASURED		
Rm @ BHT	.59@125		
Time Circulation Stopped	2 HOURS		
Time Logger on Bottom			
Maximum Recorded Temperature	125F		
Equipment Number	4010		
Location	HAYS, KANSAS		
Recorded By	GUS PFANENSTIEL		
Witnessed By	KIM SHOEMAKER		

<<< Fold Here >>>

All interpretations are opinions based on inferences from electrical or other measurements and we cannot and do not guarantee the accuracy or correctness of any interpretation, and we shall not, except in the case of gross or willful negligence on our part, be liable or responsible for any loss, costs, damages, or expenses incurred or sustained by anyone resulting from any interpretation made by any of our officers, agents or employees. These interpretations are also subject to our general terms and conditions set out in our current Price Schedule.

Comments

THANK YOU FOR USING ELI WIRELINE, HAYS, KS. (785) 628-6395

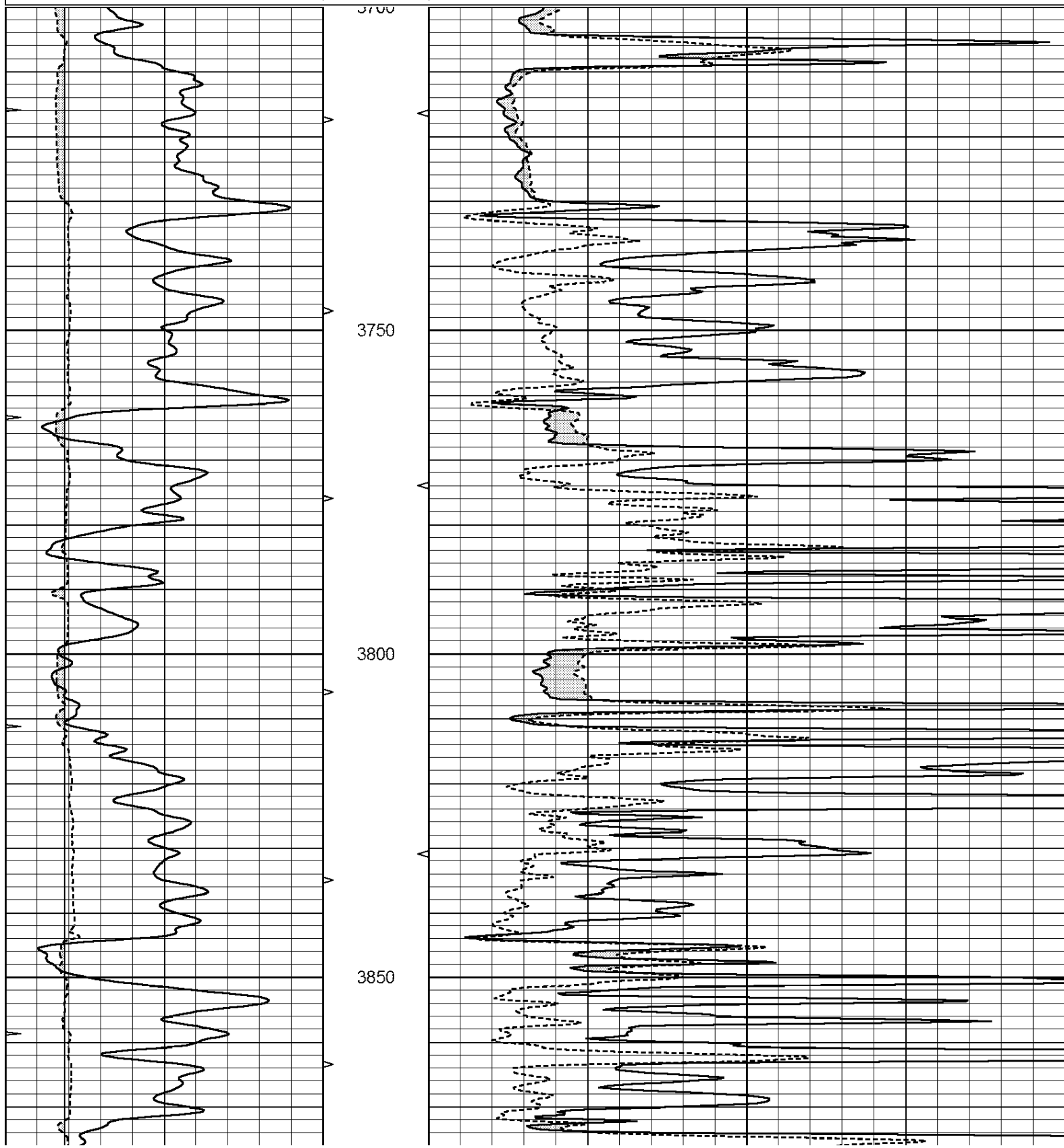
DIRECTIONS  
NORTH OF BREWSTER TO BB RD.  
WEST TO 32 RD, NORTH TO D RD.  
EAST 2 MILES, NORTH 1/2 MILE  
WEST INTO.

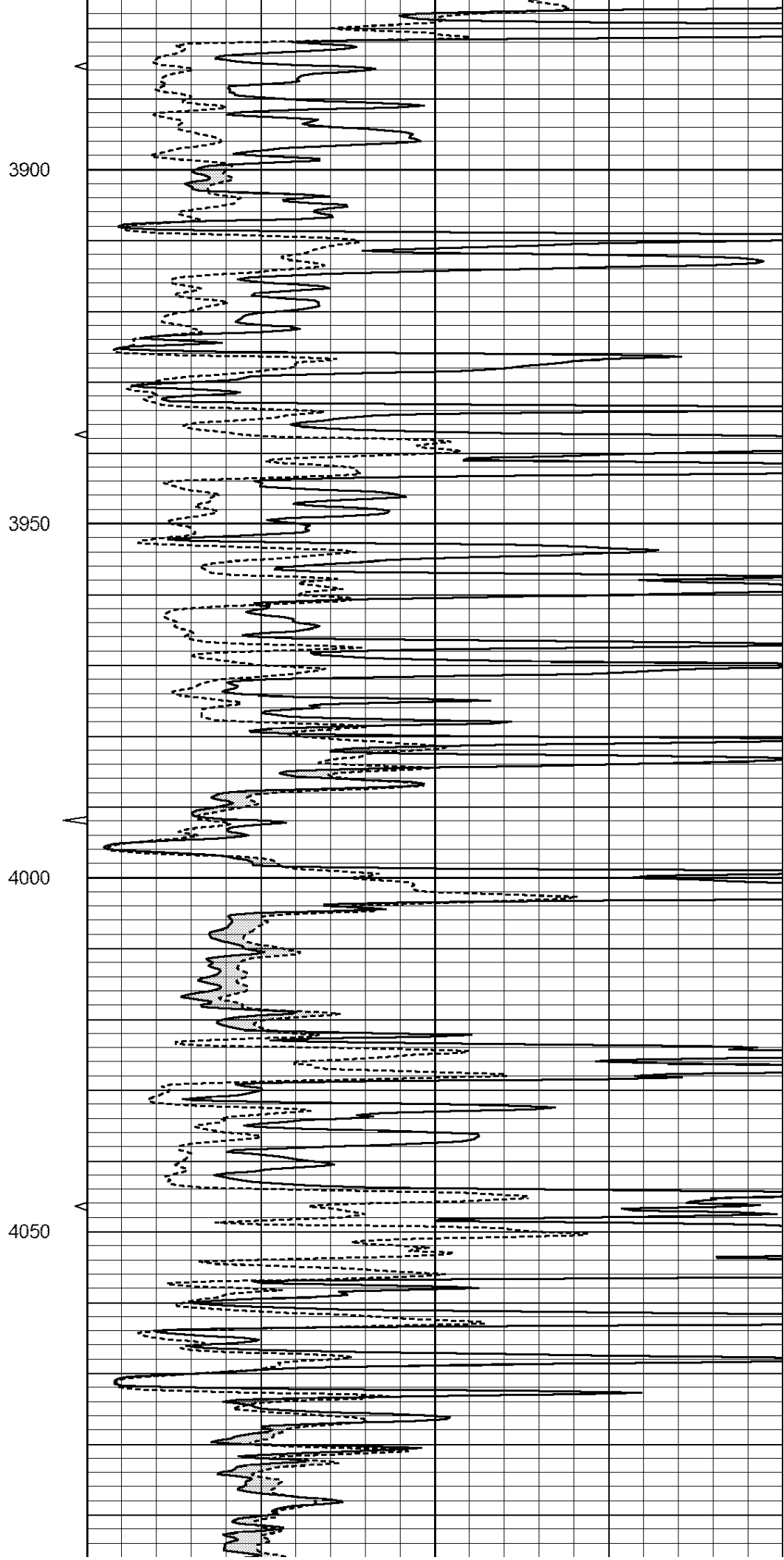
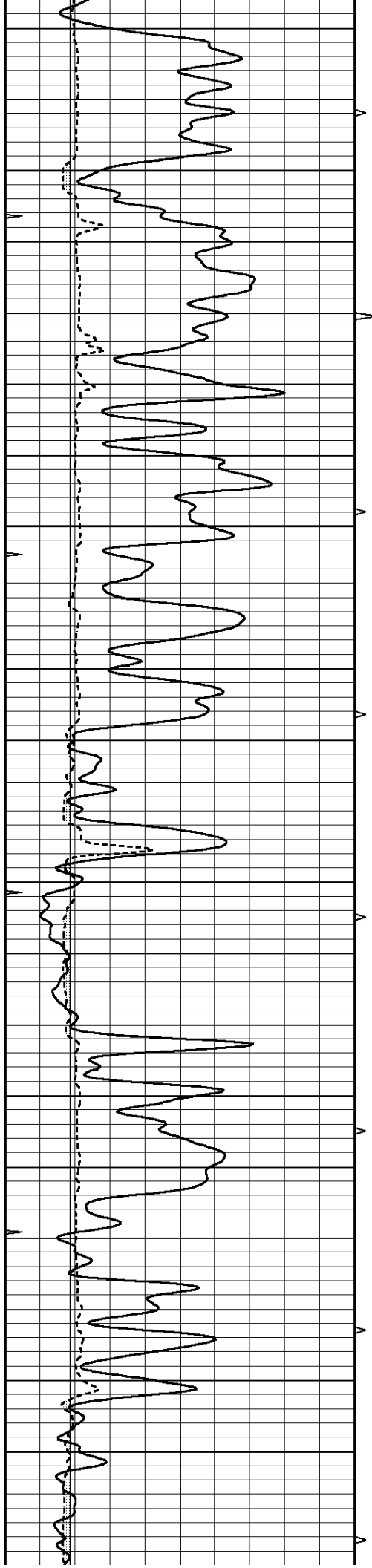


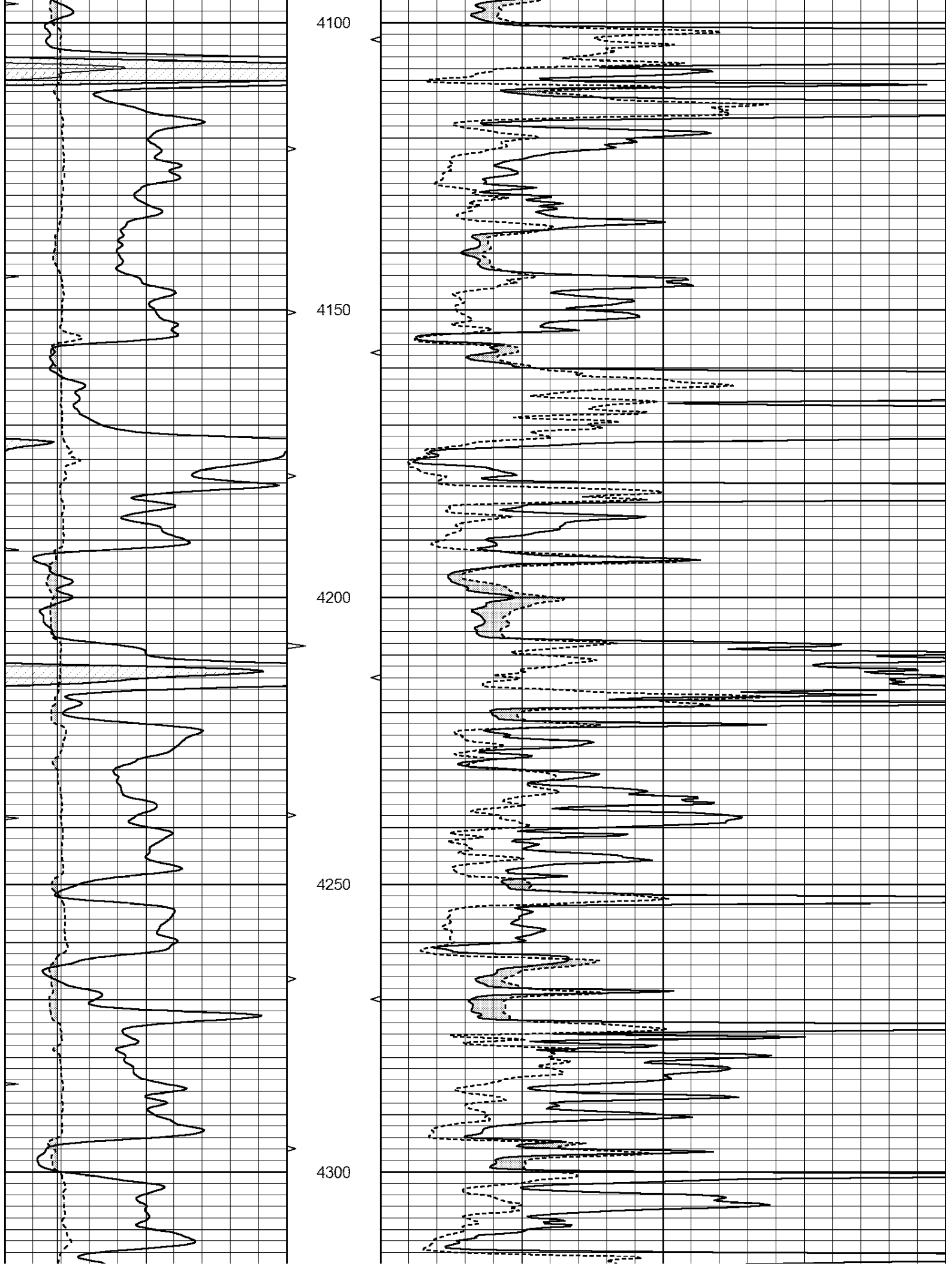
MAIN PASS

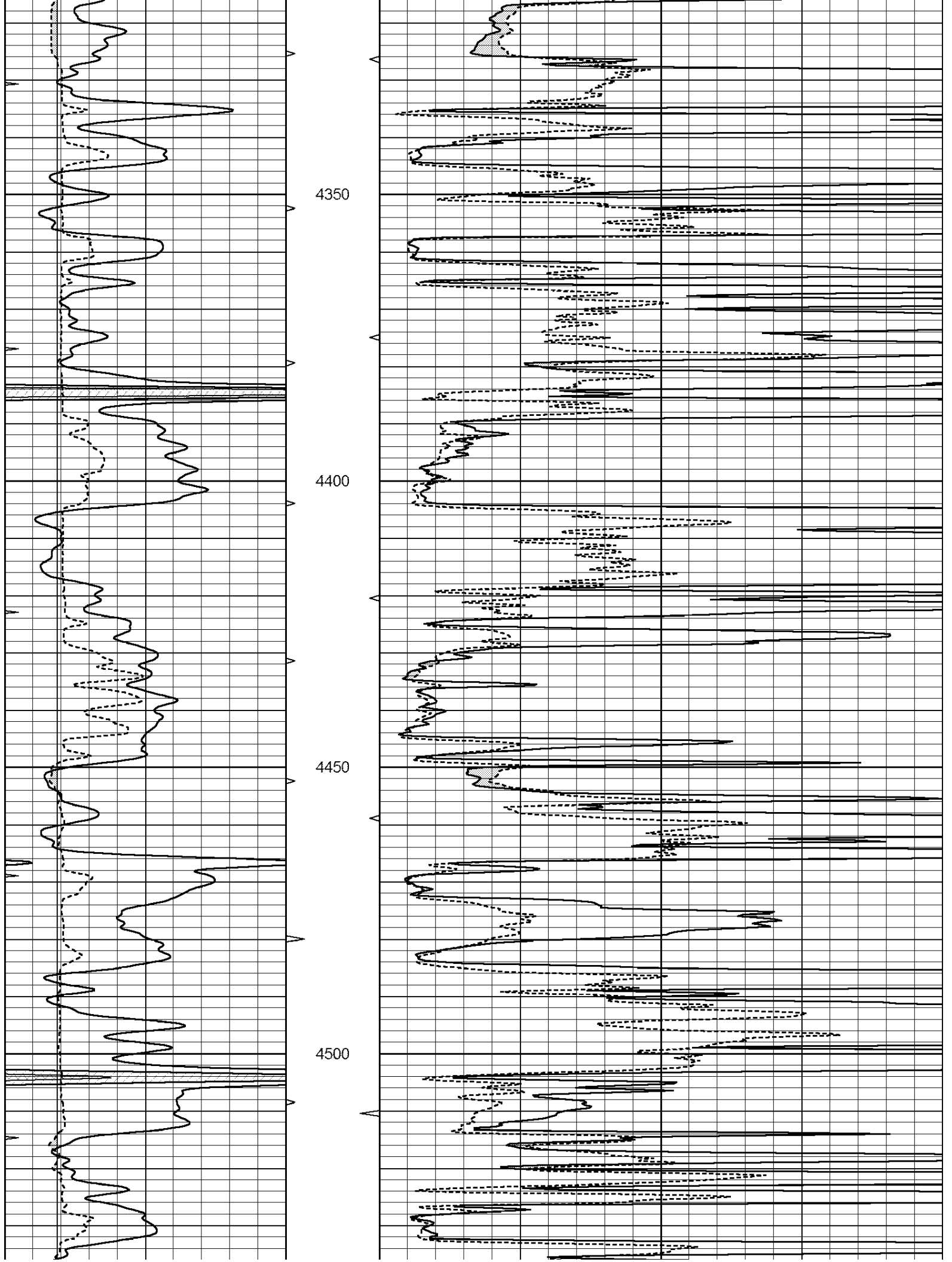
Database File: 1456ddn.db  
 Dataset Pathname: pass5MAIN  
 Presentation Format: \_micro  
 Dataset Creation: Thu Mar 16 19:22:49 2017  
 Charted by: Depth in Feet scaled 1:240

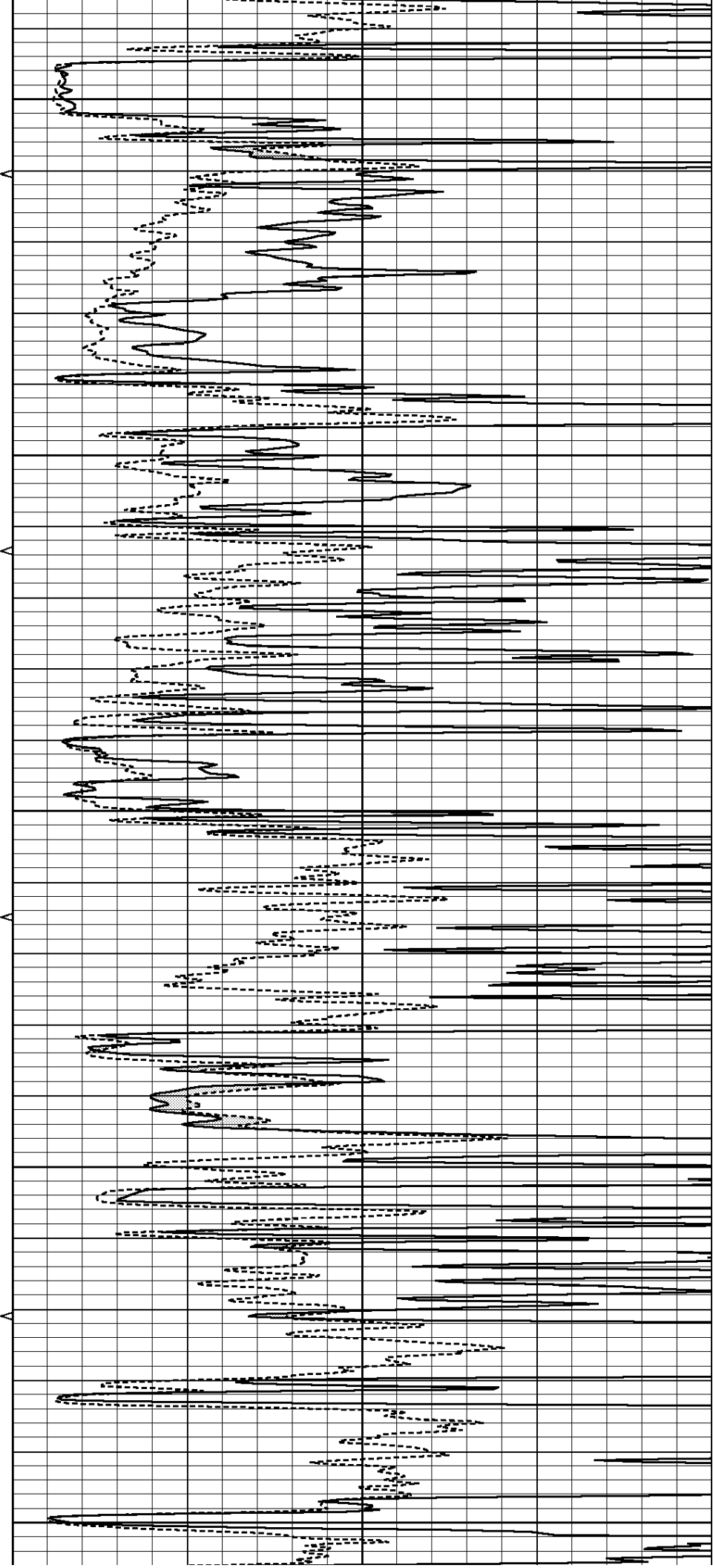
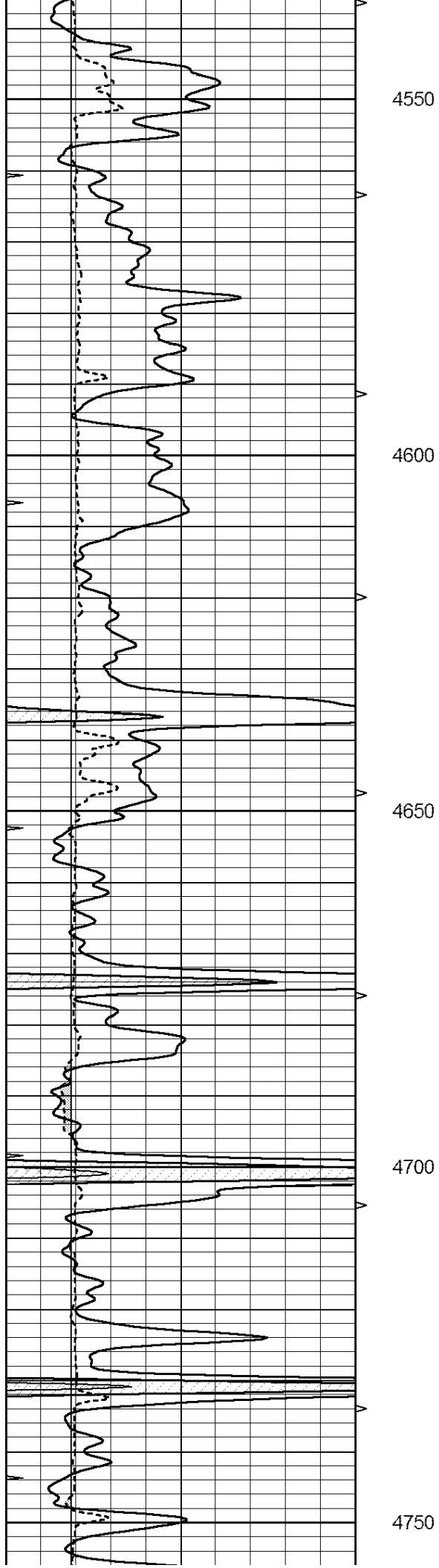
0	GAMMA RAY (GAPI)	150	ABHV	0	MEL1.5 (Ohm-m)	40
6	CALIPER (in)	16	10 (ft3)	0	MEL2.0 (Ohm-m)	40
0	MINMK	20	TBHV			
			0 (ft3)	10		

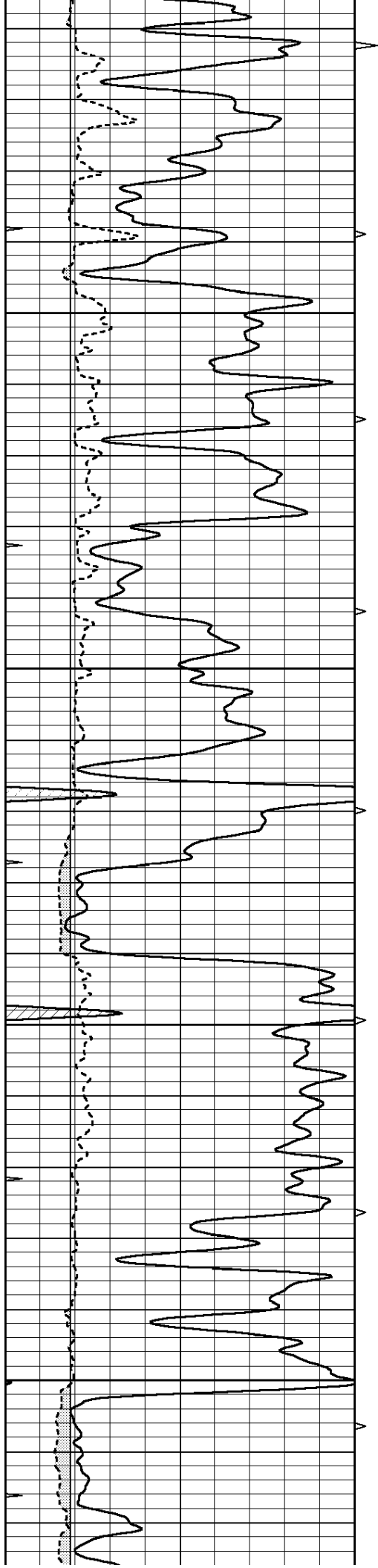










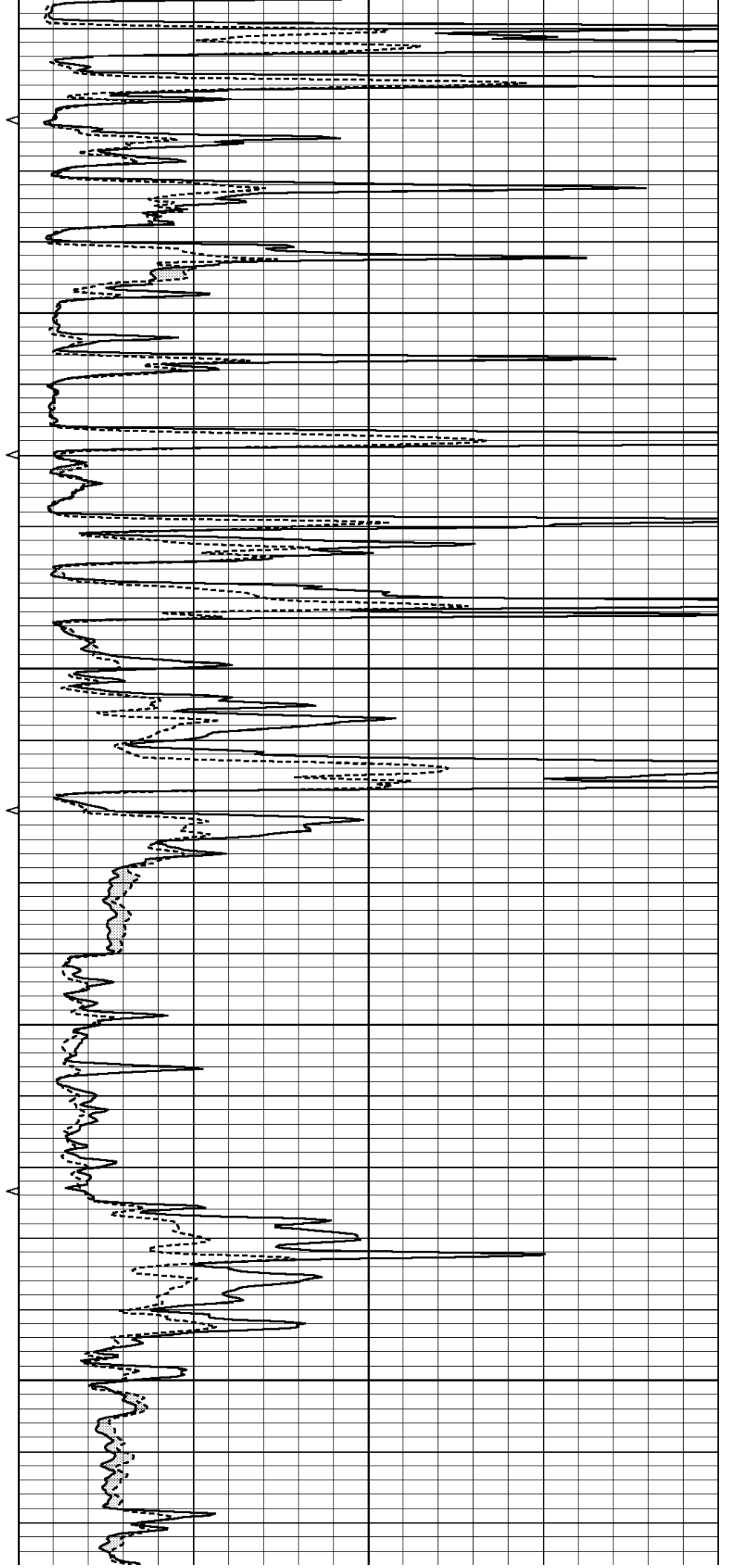


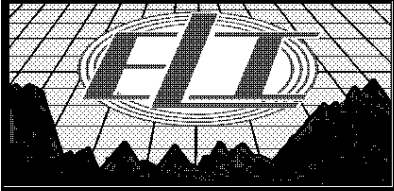
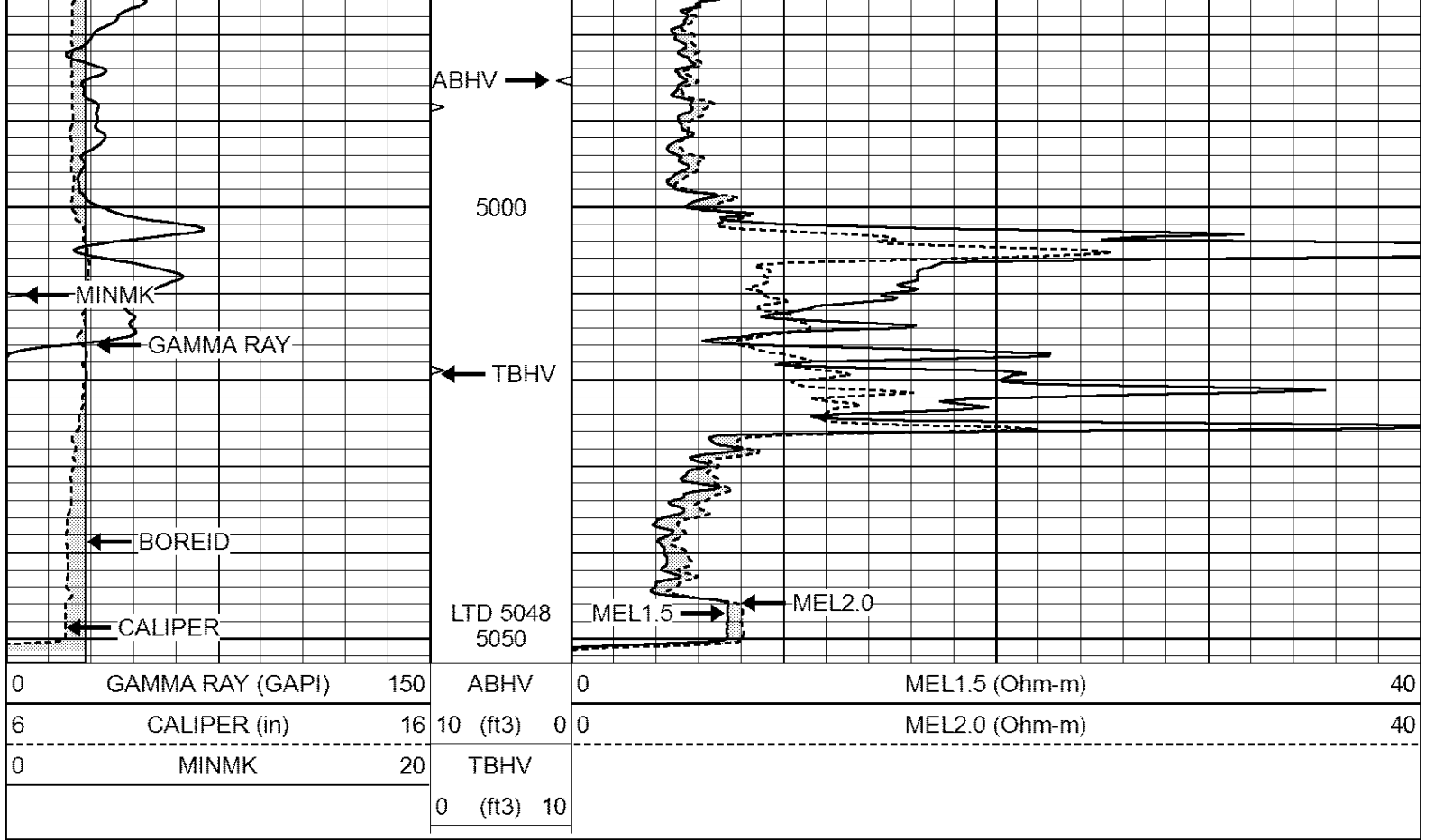
4800

4850

4900

4950

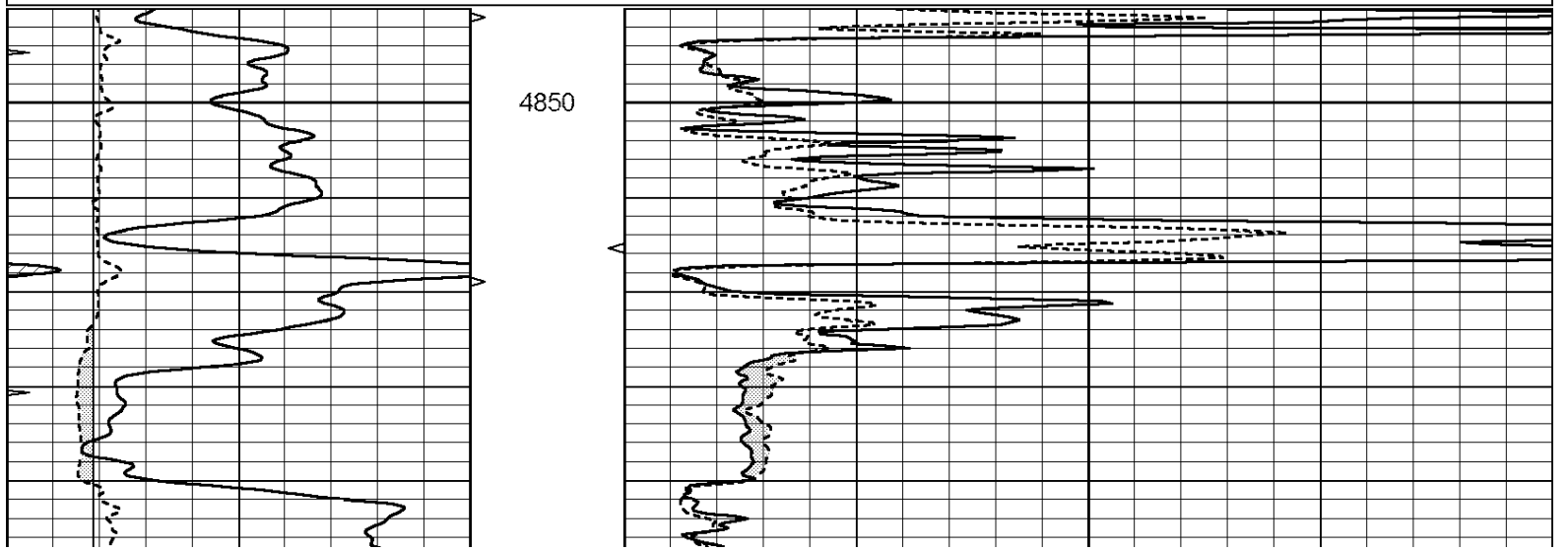


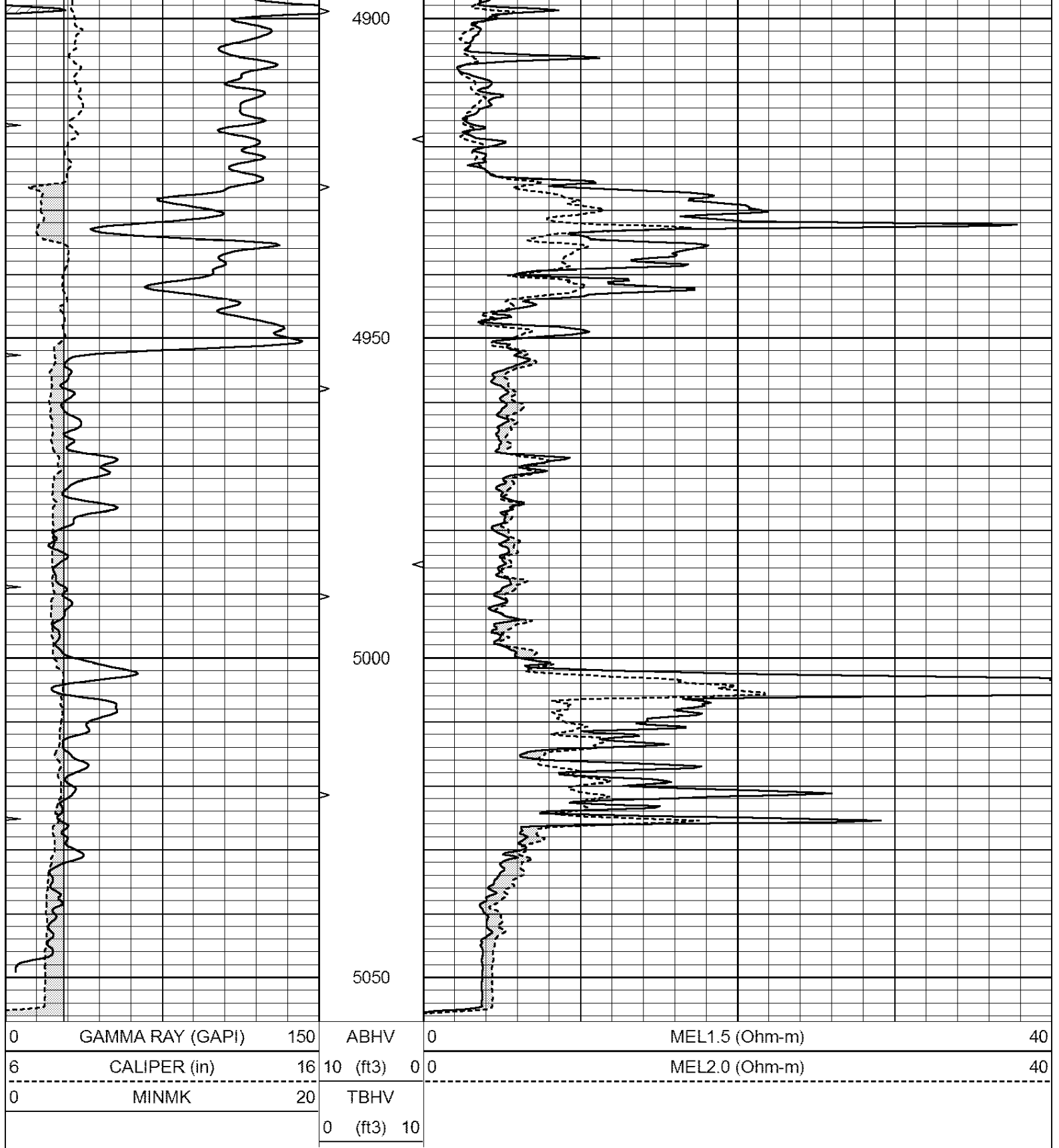


# REPEAT SECTION

Database File: 1456ddn.db  
 Dataset Pathname: pass4.3  
 Presentation Format: \_micro  
 Dataset Creation: Thu Mar 16 19:16:52 2017 by Calc Open-Cased 090629  
 Charted by: Depth in Feet scaled 1:240

0	GAMMA RAY (GAPI)	150	ABHV	0	MEL1.5 (Ohm-m)	40
6	CALIPER (in)	16	10 (ft3)	0	MEL2.0 (Ohm-m)	40
0	MINMK	20	TBHV			
			0 (ft3)	10		





Calibration Report

Database File: 1456ddn.db  
 Dataset Pathname: pass4.3  
 Dataset Creation: Thu Mar 16 19:16:52 2017 by Calc Open-Cased 090629

MICRO Calibration Report

Serial Number: MICRO6  
 Tool Model: PROBE  
 Performed: Wed Aug 26 00:34:46 2015

Caliper Calibration:	Gain=3.960	Offset=4.551
References	Low Cal 7.000	High Cal 14.000
Readings	0.555	2.323
1.5" Calibration:	Gain=38.075	Offset=-0.400
References	Low Cal 0.000	High Cal 20.000
Readings	0.004	1.196
2" Calibration:	Gain=48.000	Offset=-0.700
References	Low Cal 0.000	High Cal 20.000
Readings	0.006	0.913
Gamma Ray Calibration Report		
Serial Number:	#8	
Tool Model:	OPEN	
Performed:	Wed Mar 08 08:21:37 2017	
Calibrator Value:	150.0	GAPI
Background Reading:	0.0	cps
Calibrator Reading:	175.0	cps
Sensitivity:	0.8000	GAPI/cps