



**COMPENSATED
DENSITY/NEUTRON
LOG**

Company L.D. DRILLING, INC.
Well DEEDS #1-15
Field WILDCAT
County CHEYENNE
State KANSAS

Company L.D. DRILLING, INC.
Well DEEDS #1-15
Field WILDCAT
County CHEYENNE State KANSAS

Location: API # : 15-023-21461-00-00
2254' FSL & 1978' FEL
SEC 15 TWP 5S RGE 37W
Permanent Datum GROUND LEVEL Elevation 3395'
Log Measured From KELLY BUSHING 5' A.G.L.
Drilling Measured From KELLY BUSHING
Elevation
K.B. 3400
D.F. 3398
G.L. 3395

Date	03/16/17		
Run Number	ONE		
Depth Driller	5050		
Depth Logger	5048		
Bottom Logged Interval	5024		
Top Log Interval	3700		
Casing Driller	8 5/8" @ 348		
Casing Logger	348		
Bit Size	7 7/8"		
Type Fluid in Hole	CHEMICAL MUD	CHLORIDES 3400 PPM	
Density / Viscosity	9.360		
pH / Fluid Loss	10.5/7.2		
Source of Sample	FLOWLINE		
Rm @ Meas. Temp	1.0@74		
Rmt @ Meas. Temp	.75@74		
Rmc @ Meas. Temp	1.20@74		
Source of Rmf / Rmc	MEASURED		
Rm @ BHT	.59@125		
Time Circulation Stopped	2 HOURS		
Time Logger on Bottom			
Maximum Recorded Temperature	125F		
Equipment Number	4010		
Location	HAYS, KANSAS		
Recorded By	GUS PFANENSTIEL		
Witnessed By	KIM SHOEMAKER		

<<< Fold Here >>>

All interpretations are opinions based on inferences from electrical or other measurements and we cannot and do not guarantee the accuracy or correctness of any interpretation, and we shall not, except in the case of gross or willful negligence on our part, be liable or responsible for any loss, costs, damages, or expenses incurred or sustained by anyone resulting from any interpretation made by any of our officers, agents or employees. These interpretations are also subject to our general terms and conditions set out in our current Price Schedule.

Comments

THANK YOU FOR USING ELI WIRELINE, HAYS, KS. (785) 628-6395

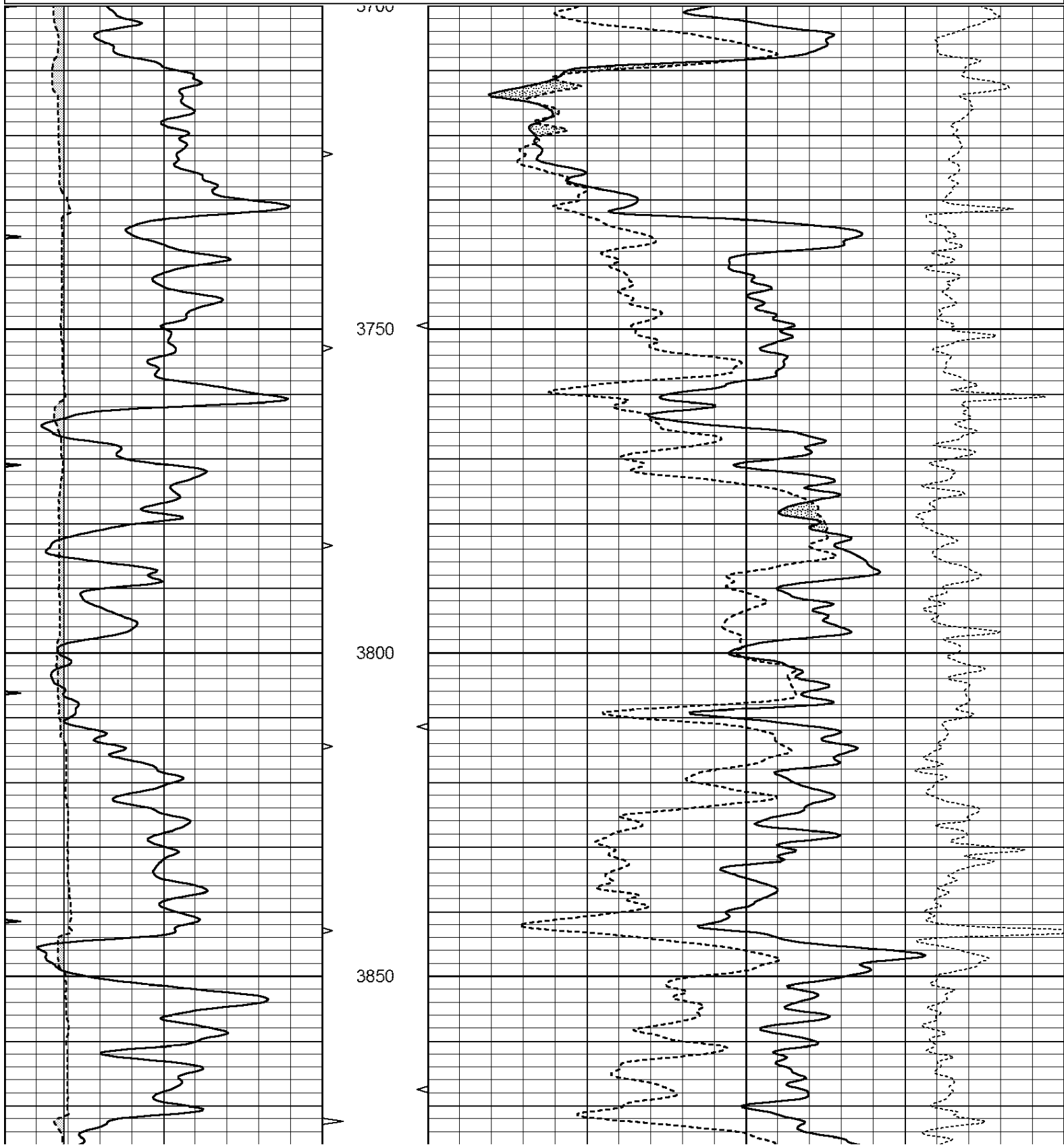
DIRECTIONS
NORTH OF BREWSTER TO BB RD.
WEST TO 32 RD, NORTH TO D RD.
EAST 2 MILES, NORTH 1/2 MILE
WEST INTO.

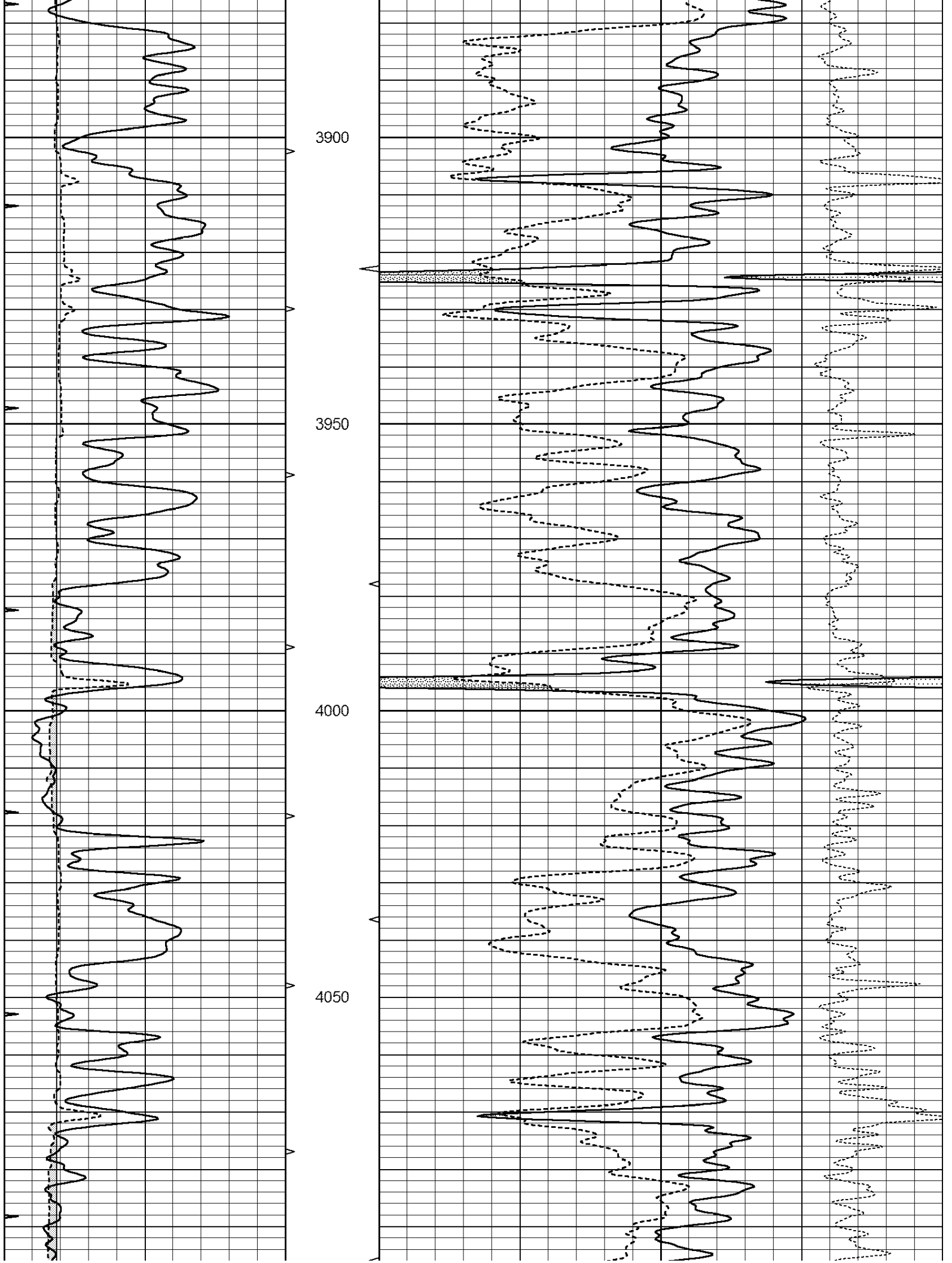


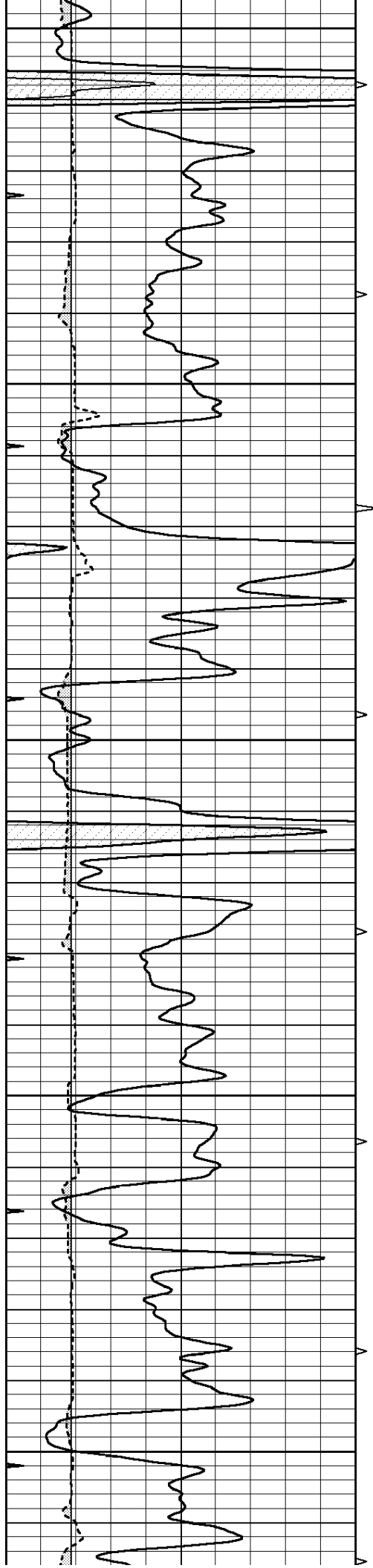
MAIN PASS

Database File: 1456ddn.db
 Dataset Pathname: pass3M.1
 Presentation Format: den_neu
 Dataset Creation: Thu Mar 16 17:29:19 2017 by Calc Open-Cased 090629
 Charted by: Depth in Feet scaled 1:240

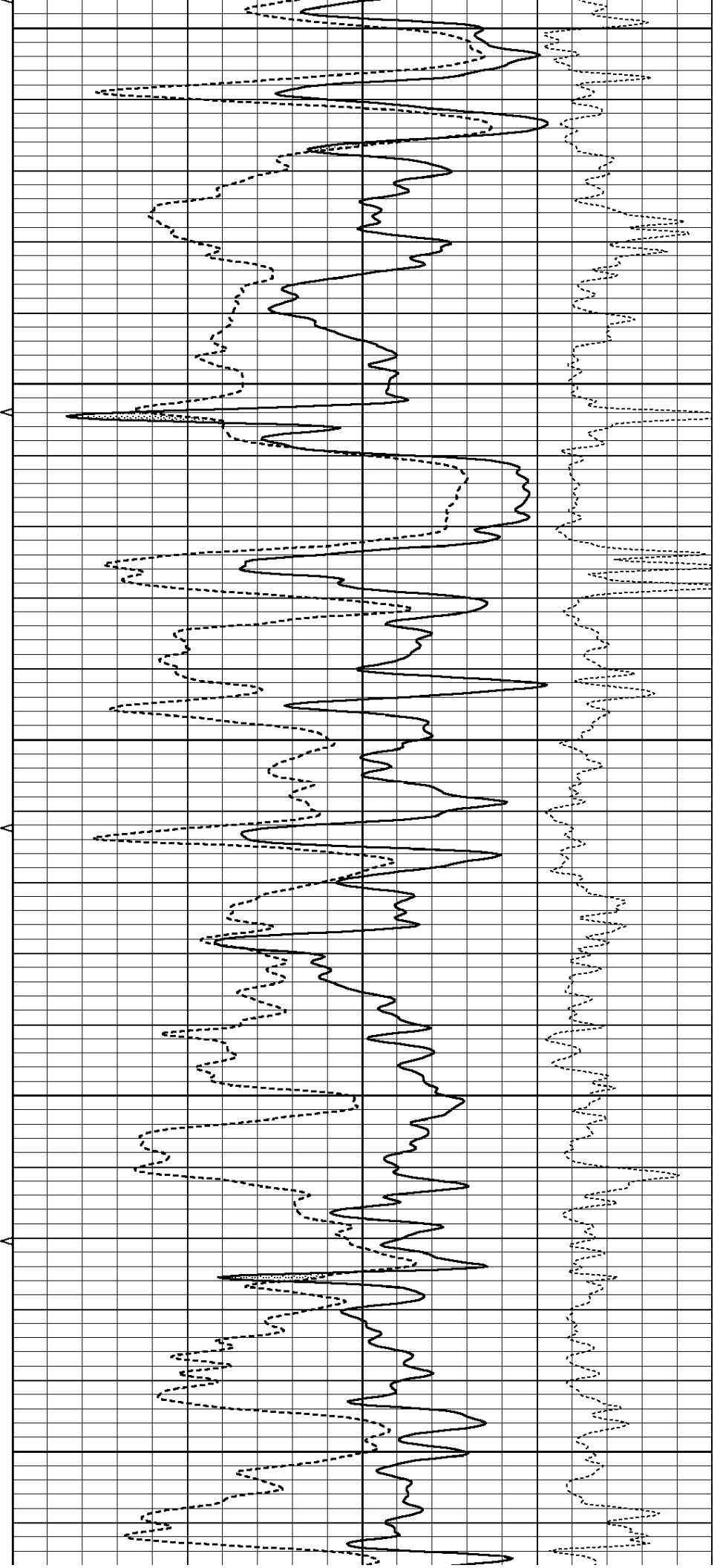
0	GAMMA RAY (GAPI)	150	ABHV	30	COMPENSATED DENSITY (pu)	-10
6	CALIPER (in)	16	10 (ft3)	0 30	COMPENSATED NEUTRON (pu)	-10
0	MINMK	20	TBHV		-0.25 CORRECTION (g/cc)	0.25
			0 (ft3)	10		

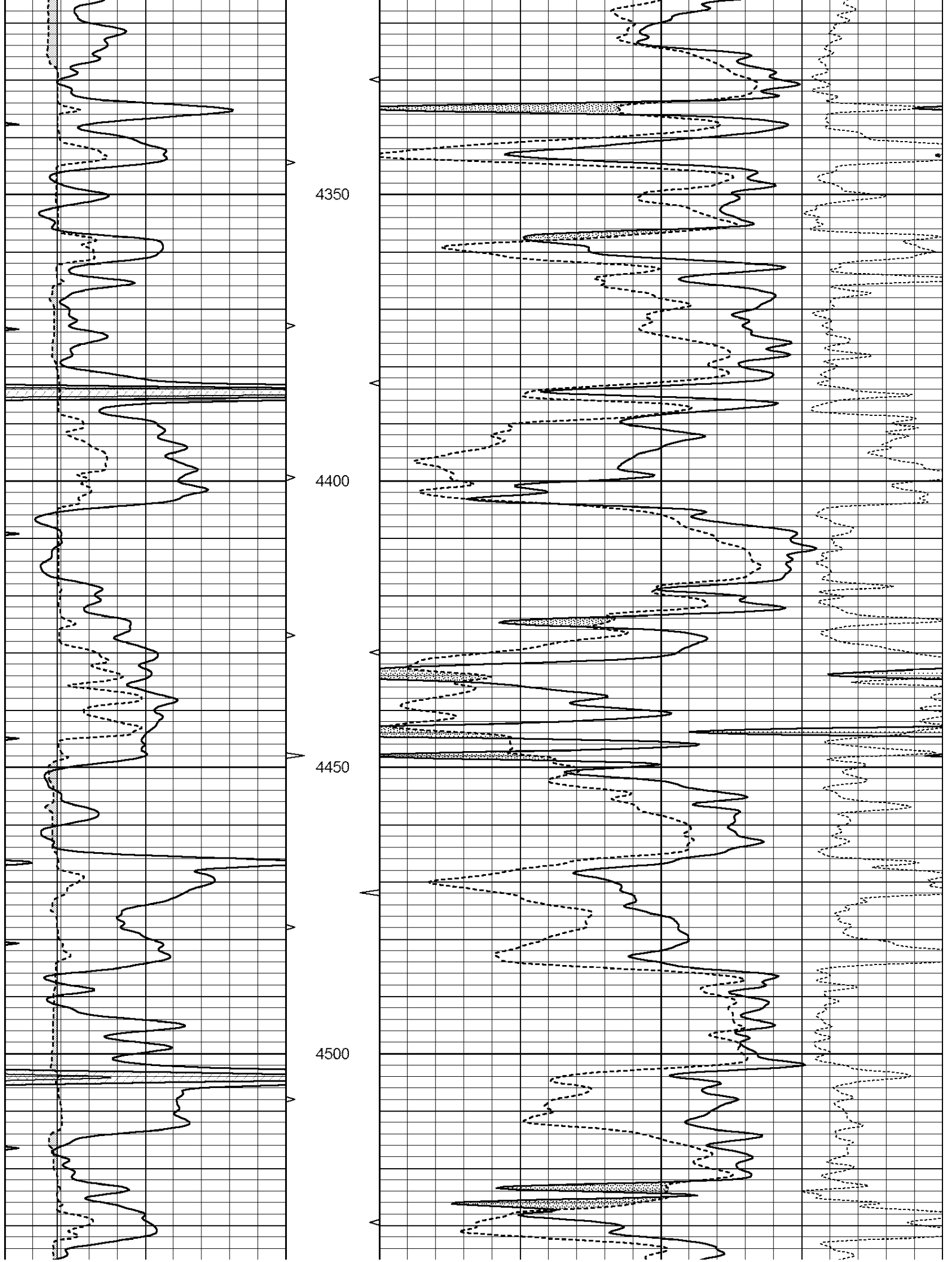


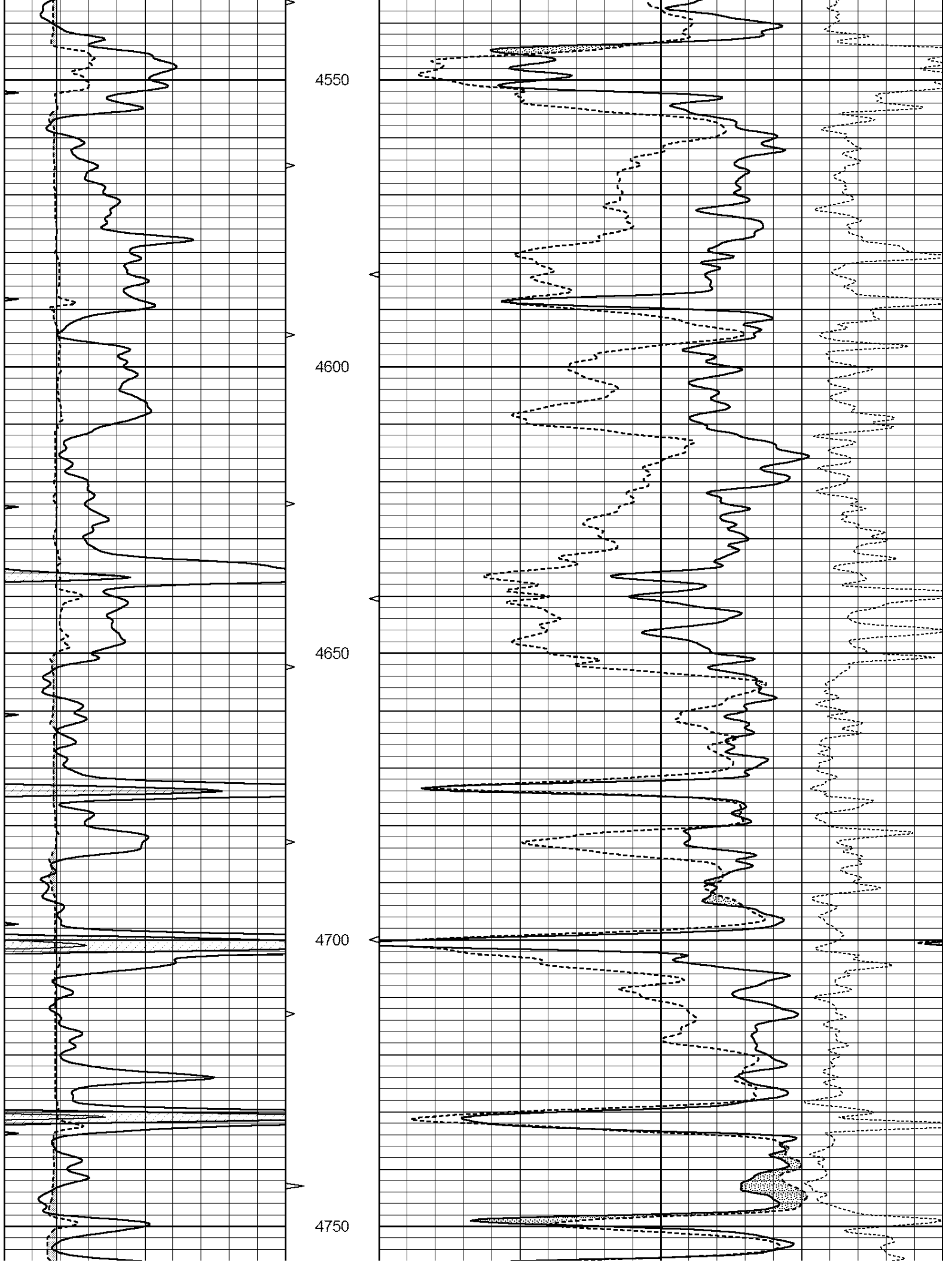


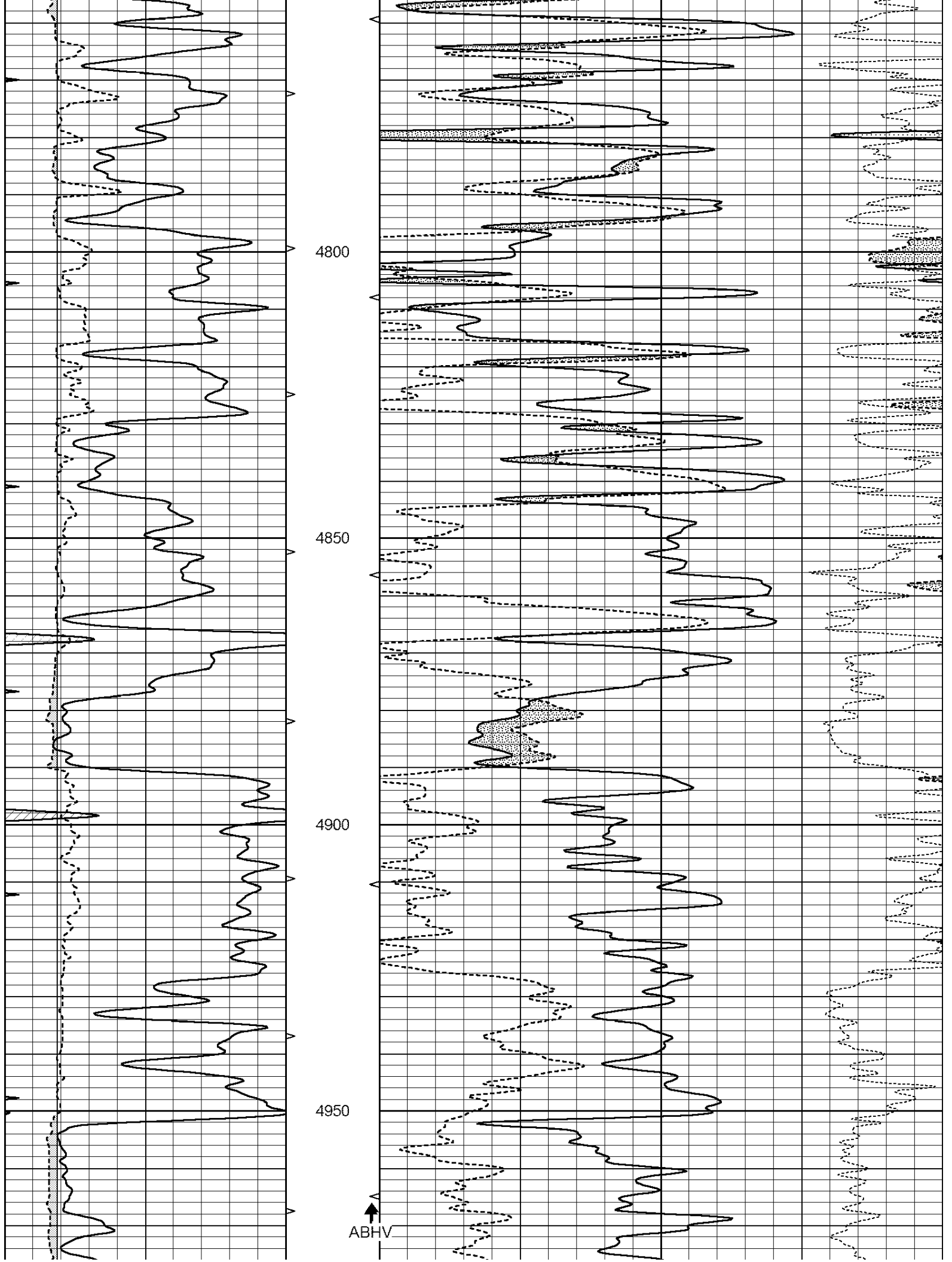


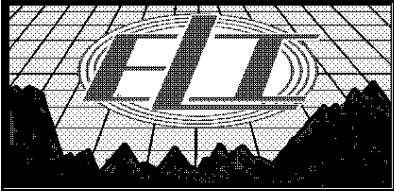
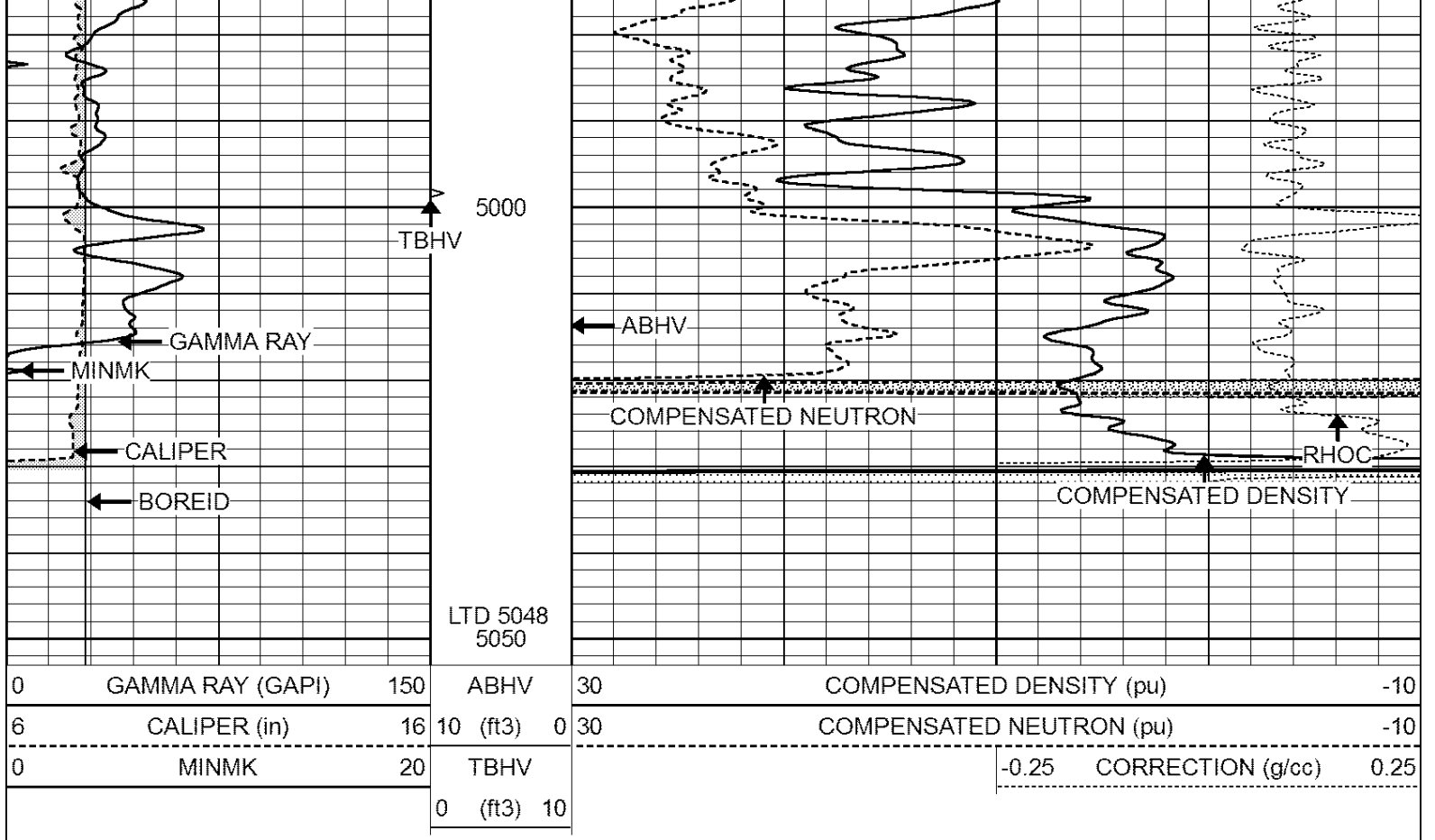
4100
4150
4200
4250
4300







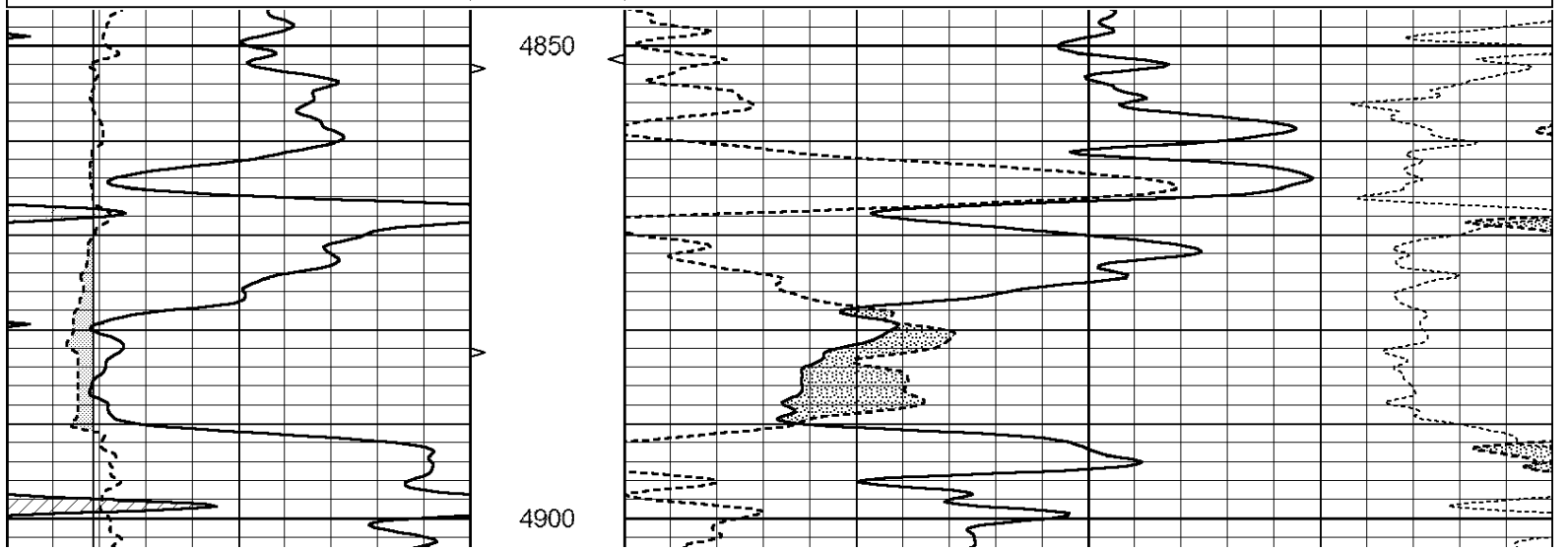


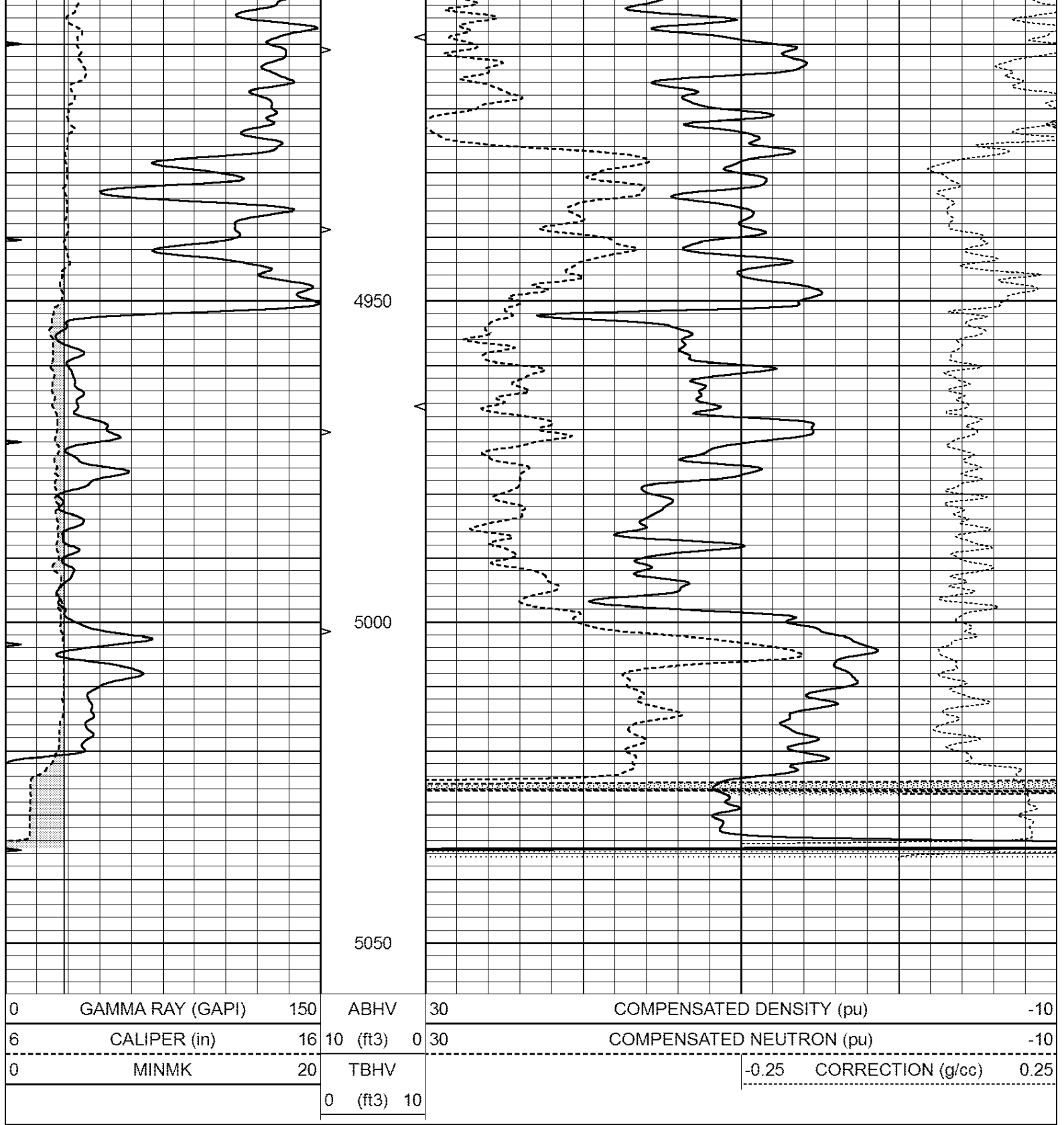


REPEAT SECTION

Database File: 1456ddn.db
 Dataset Pathname: pass2RP
 Presentation Format: den_neu
 Dataset Creation: Thu Mar 16 18:51:07 2017 by Calc Open-Cased 090629
 Charted by: Depth in Feet scaled 1:240

0	GAMMA RAY (GAPI)	150	ABHV	30	COMPENSATED DENSITY (pu)	-10
6	CALIPER (in)	16	10 (ft3)	0 30	COMPENSATED NEUTRON (pu)	-10
0	MINMK	20	TBHV		-0.25	CORRECTION (g/cc) 0.25
			0 (ft3) 10			





Calibration Report

Database File: 1456ddn.db
 Dataset Pathname: pass2RP
 Dataset Creation: Thu Mar 16 18:51:07 2017 by Calc Open-Cased 090629

Dual Induction Calibration Report

Serial-Model:	PROBE8-DILG
Surface Cal Performed:	Sun May 10 19:54:09 2015
Downhole Cal Performed:	Mon Jul 28 11:08:27 2008
After Survey Verification Performed:	Mon Jul 28 11:08:27 2008

Surface Calibration			Readings		References		Results	
Loop:	Air	Loop		Air	Loop		m	b
Deep	0.015	0.648	V	0.000	400.000	mmho/m	620.000	0.000
Medium	0.029	0.796	V	0.000	464.000	mmho/m	590.000	-12.000
Internal:	Zero	Cal		Zero	Cal		m	b
Deep	0.017	0.657	V	0.000	400.000	mmho/m	625.153	-10.619
Medium	0.016	0.757	V	0.000	464.000	mmho/m	625.992	-9.739

Downhole Calibration			Readings		References		Results	
	Zero	Cal		Zero	Cal		m'	b'
Deep	0.000	0.000	mmho/m	2.011	405.777	mmho/m	1.000	0.000
Medium	0.000	0.000	mmho/m	7.590	503.393	mmho/m	1.000	0.000
LL3		7.500	V		1500.000	Ohm-m		
		0.000	V		20.000	Ohm-m		
		-7.200	V		3800.000	mmho-m		

After Survey Verification			Readings		Targets		Results	
	Zero	Cal		Zero	Cal		m'	b'
Deep	0.000	0.000	mmho/m	0.000	0.000	mmho/m	0.000	0.000
Medium	0.000	0.000	mmho/m	0.000	0.000	mmho/m	0.000	0.000
LL3		1.000	Ohm-m		1.000	Ohm-m		
		0.000	Ohm-m		0.000	Ohm-m		
		1.000	mmho-m		1.000	mmho-m		

Compensated Density Calibration Report

Serial-Model:	GEAR5-GEARHART
Source / Verifier:	/
Master Calibration Performed:	Sun Dec 06 13:45:22 2015
Before Survey Verification Performed:	
After Survey Verification Performed:	

Master Calibration			Density		Far Detector	Near Detector
Magnesium	1.710	g/cc			798.83	465.02 cps
Aluminum	2.570	g/cc			178.16	318.19 cps
Spine Angle = 75.81			Density/Spine Ratio = 0.556			
	Size			Reading		
Small Ring	7.15	in		1.47	V	
Large Ring	14.00	in		3.01	V	

Before Survey Verification			Target	Measured
		g/cc		g/cc
		g/cc		g/cc
		g/cc		g/cc

After Survey Verification			Target	Measured
		g/cc		g/cc

Compensated Neutron Calibration Report

Serial Number: 61
 Tool Model: G

CALIBRATION

Detector	Readings	Target	Normalization
Short Space	1.00 cps	1.00 cps	1.0000
Long Space	1.00 cps	1.00 cps	1.0000

PRE-SURVEY VERIFICATION

	Detector	Readings	Measured	Target
1)	Short Space	cps		
	Long Space	cps	pu	pu
2)	Short Space	cps		
	Long Space	cps	pu	
3)	Short Space	cps		
	Long Space	cps	pu	

POST-SURVEY VERIFICATION

	Detector	Readings	Measured	Target
1)	Short Space	cps		
	Long Space	cps	pu	pu
2)	Short Space	cps		
	Long Space	cps	pu	pu
3)	Short Space	cps		
	Long Space	cps	pu	pu

Gamma Ray Calibration Report

Serial Number: GR6
 Tool Model: OPEN
 Performed: Thu Nov 12 05:47:01 2015

Calibrator Value: 150.0 GAPI
 Background Reading: 0.0 cps
 Calibrator Reading: 276.0 cps
 Sensitivity: 0.5000 GAPI/cps