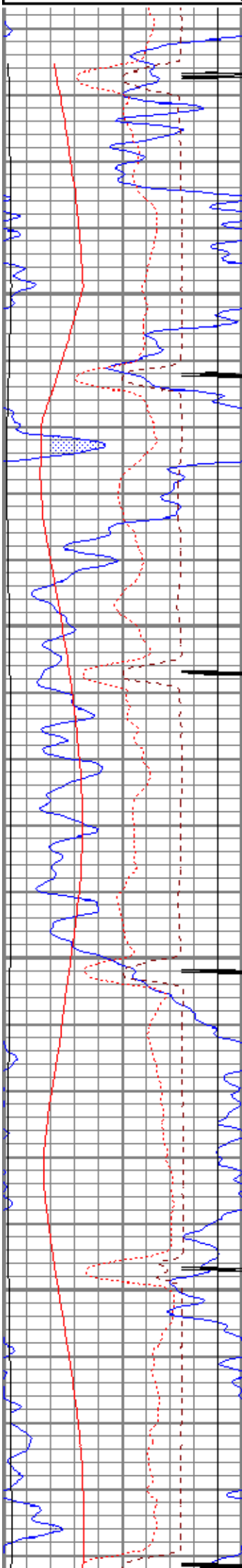




0	AMP3FT (mV)	100
0	DEVI (deg)	100
0	DEVI (deg)	10

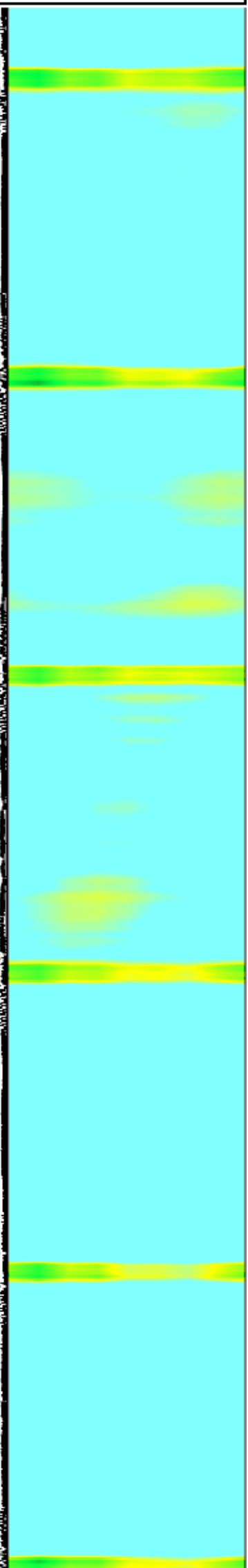
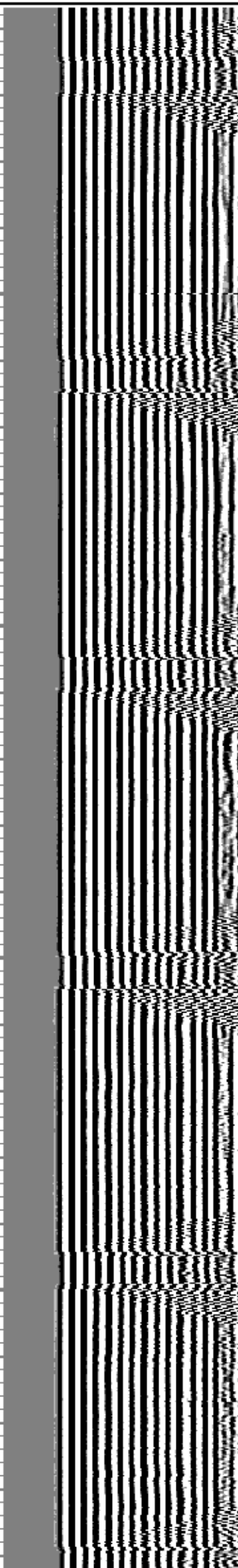
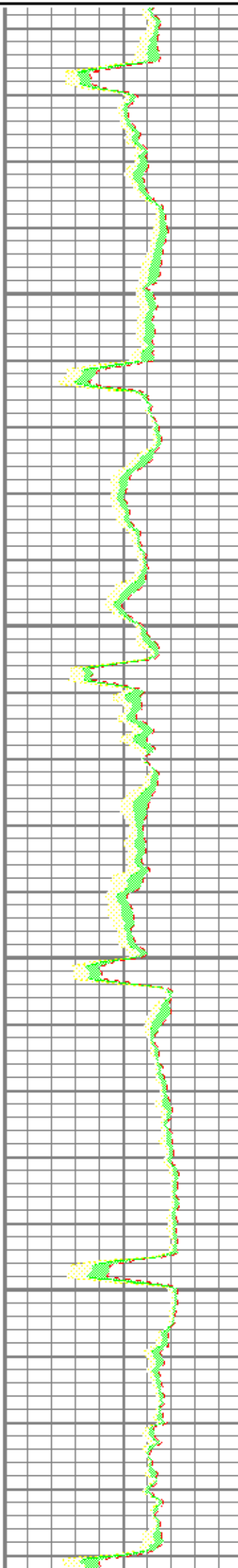


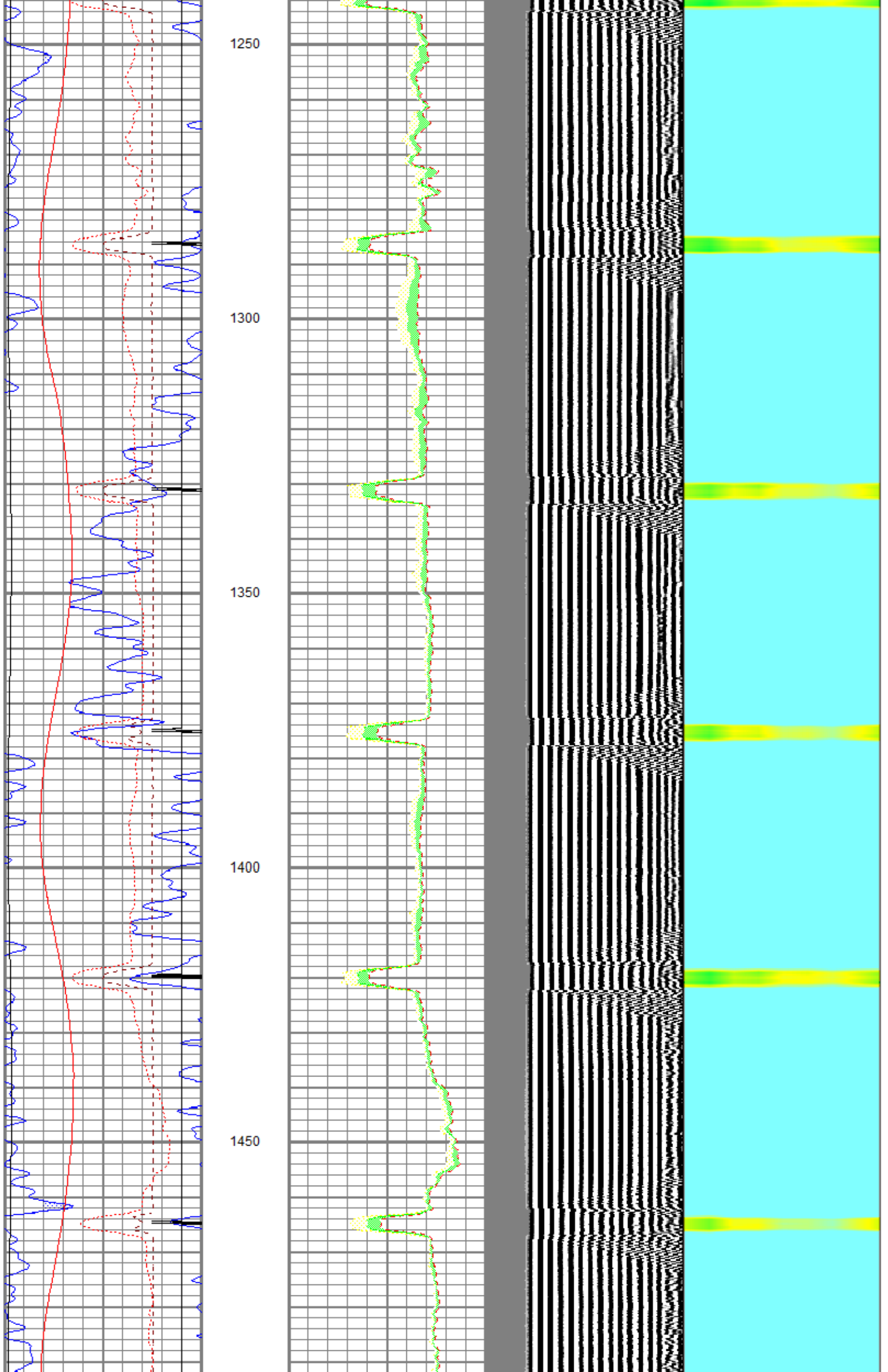
1050

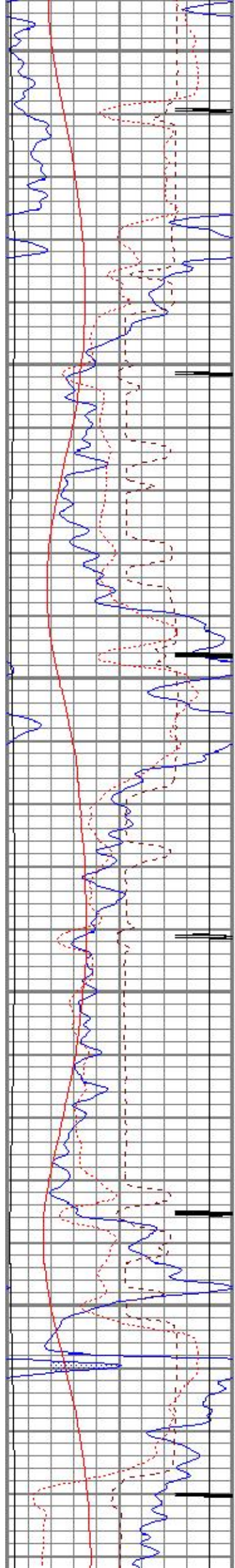
1100

1150

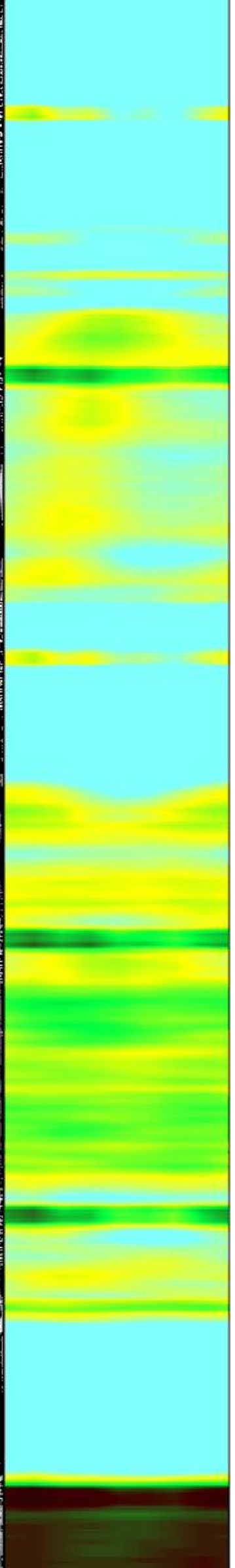
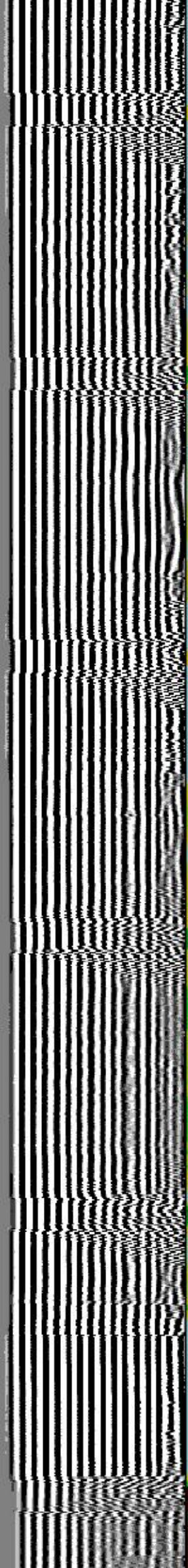
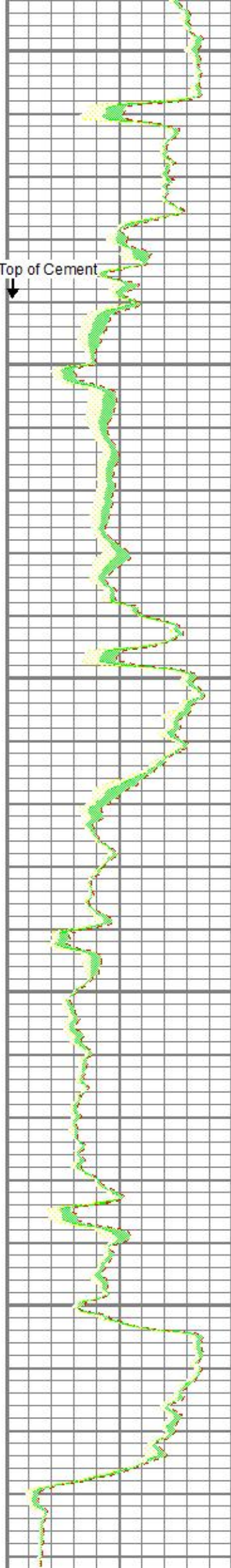
1200

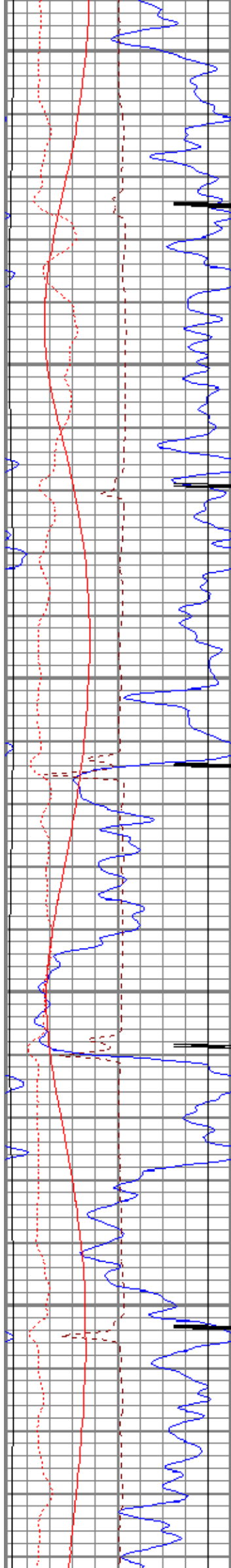






1500  
Estimated Top of Cement  
1550  
1600  
1650  
1700





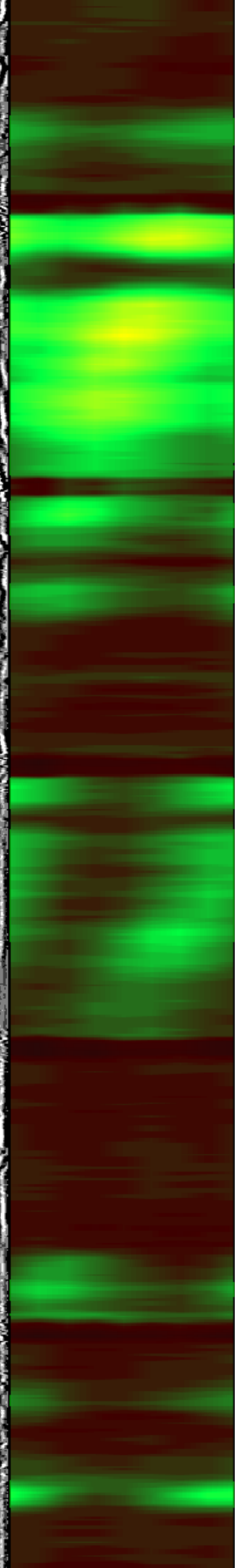
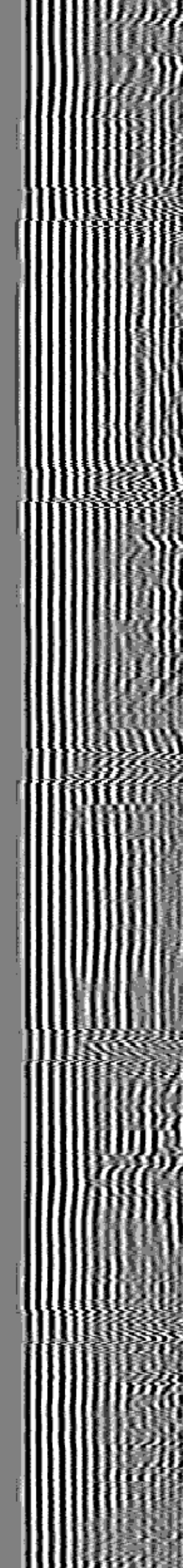
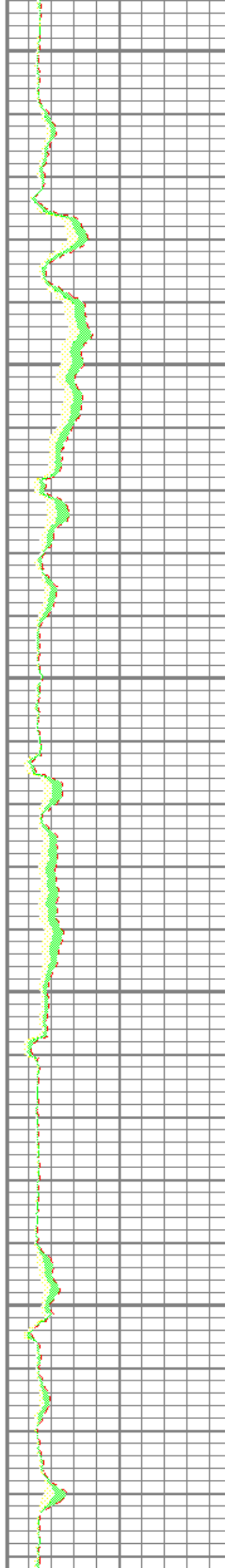
1750

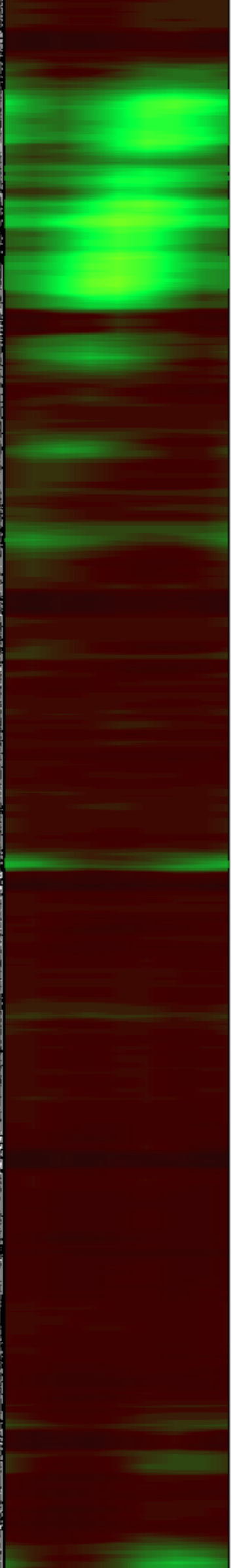
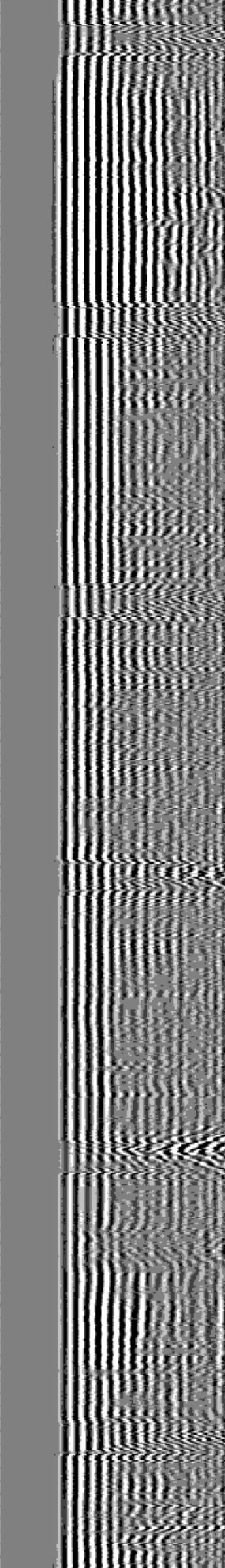
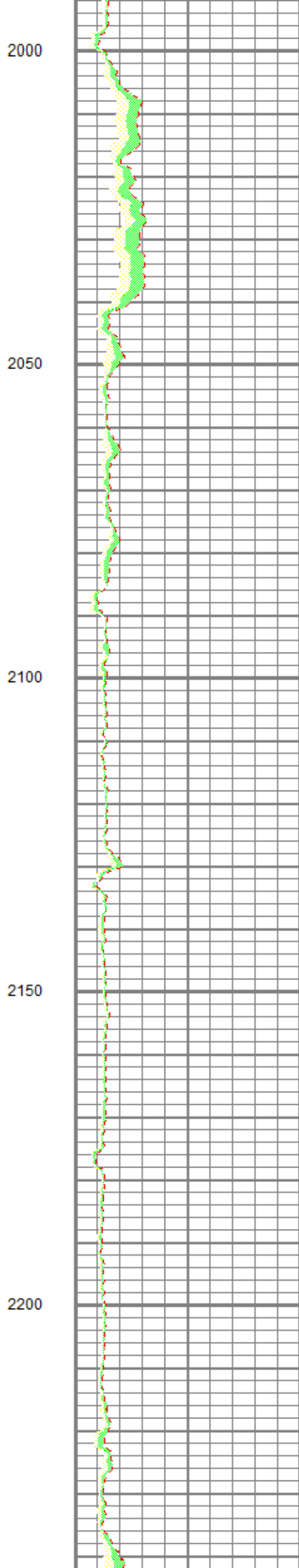
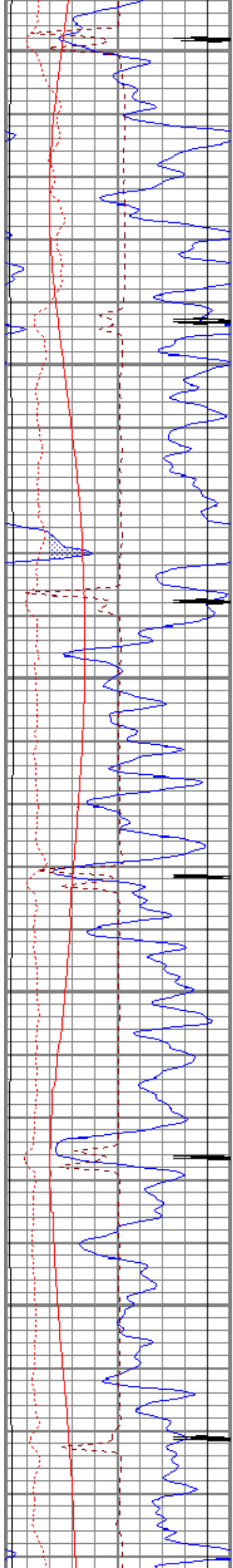
1800

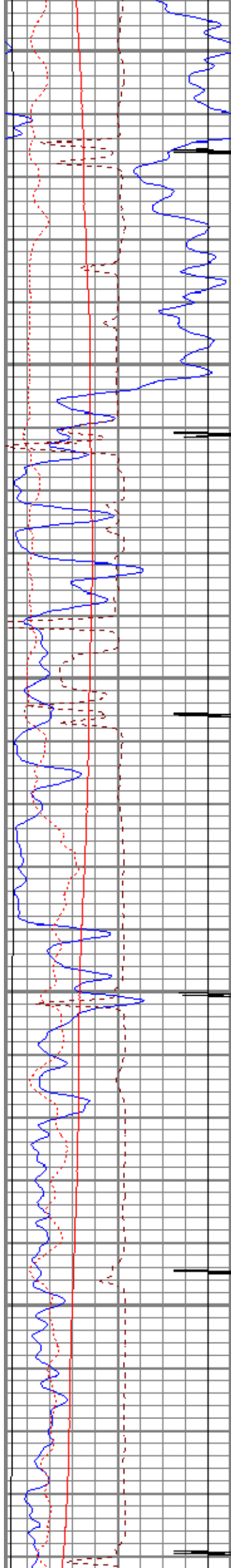
1850

1900

1950







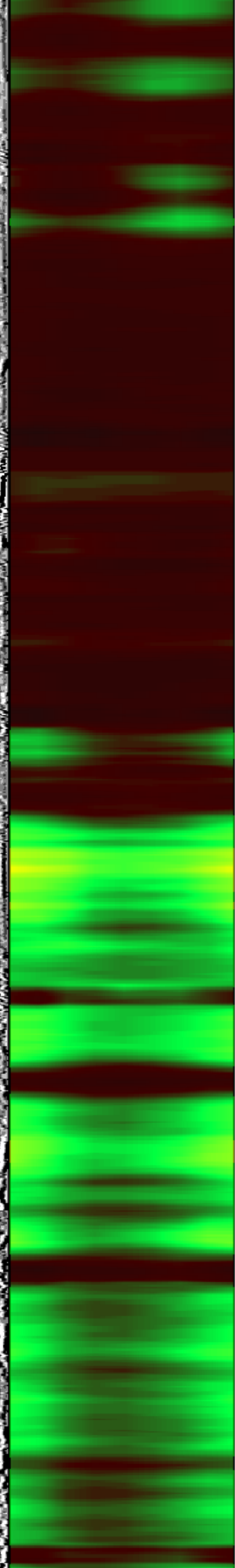
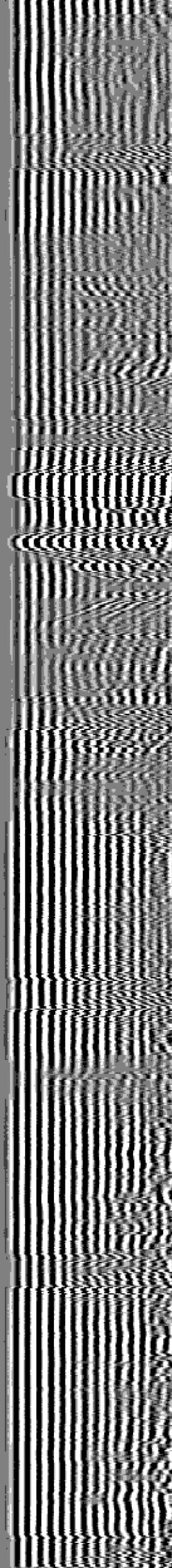
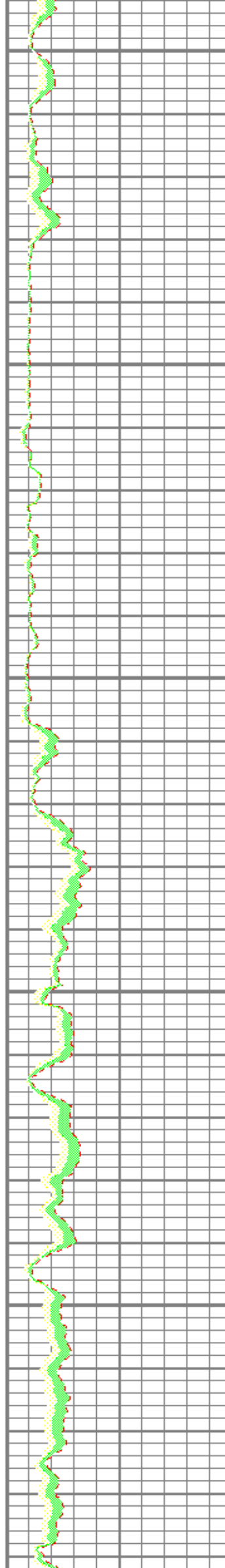
2250

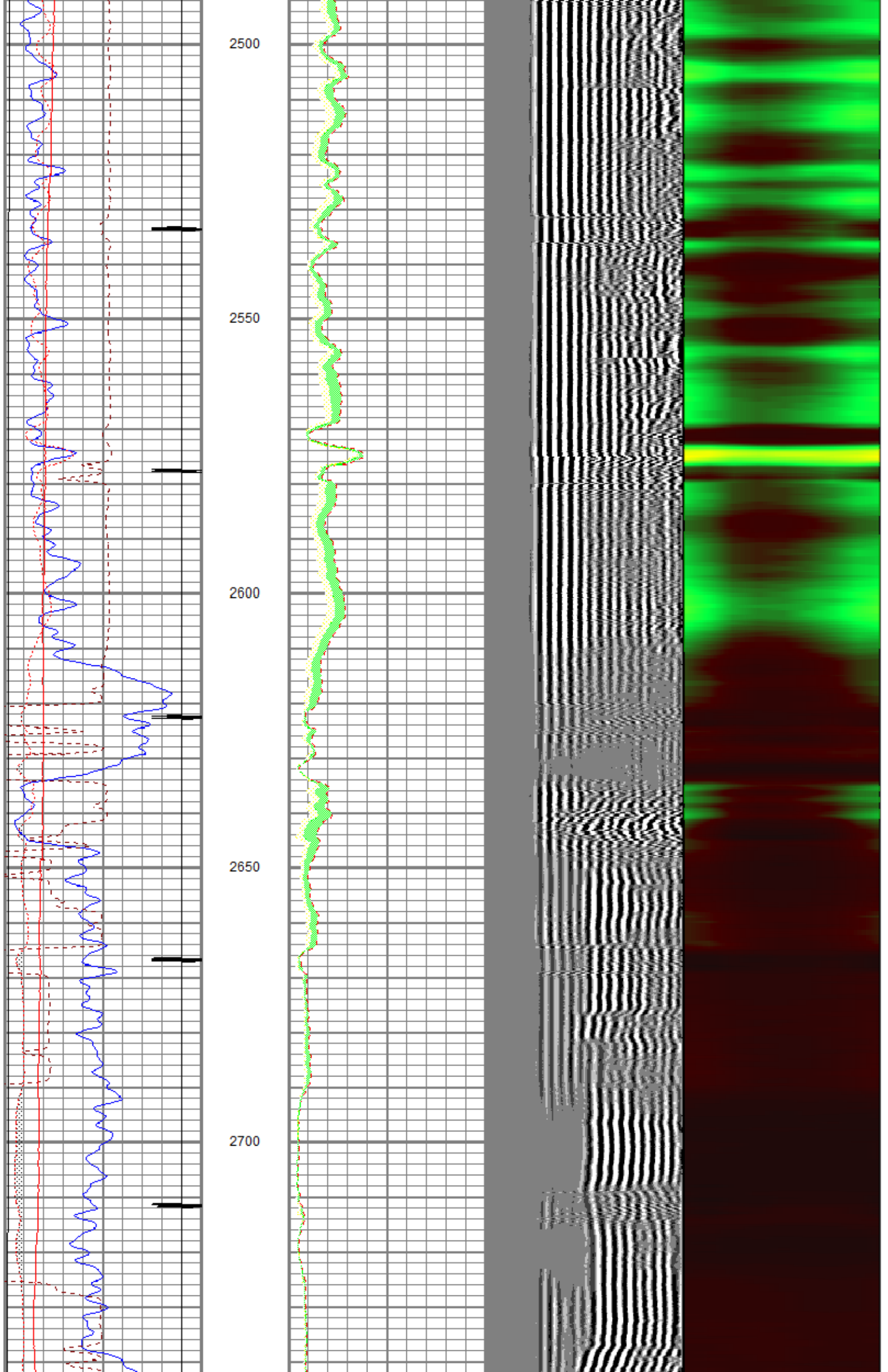
2300

2350

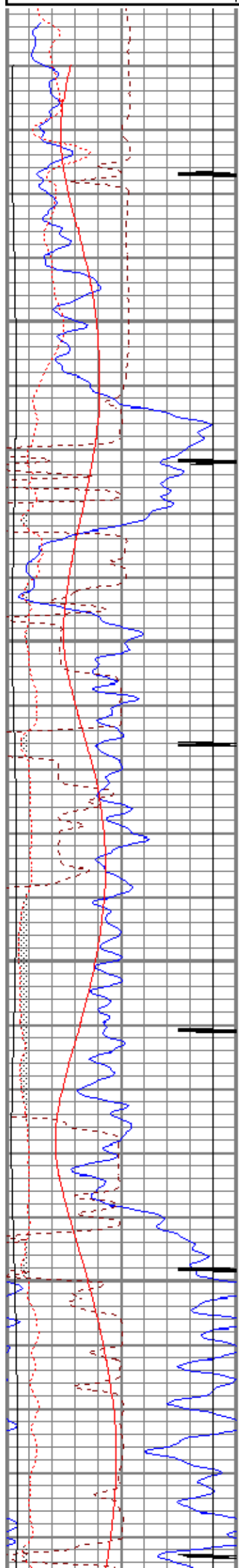
2400

2450

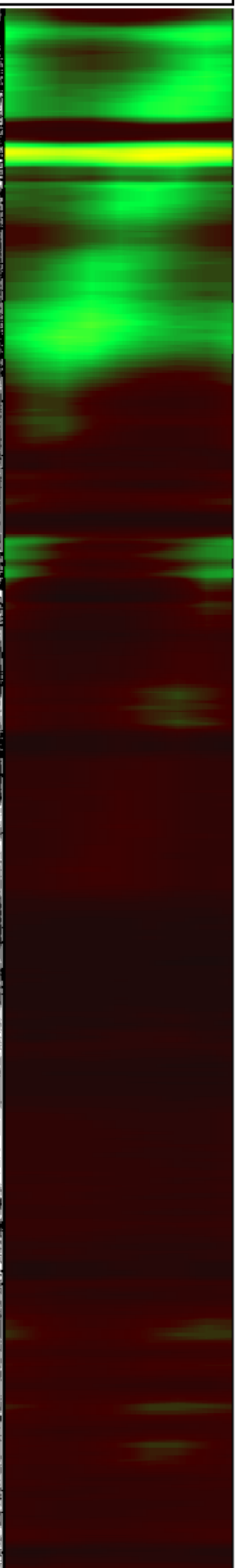
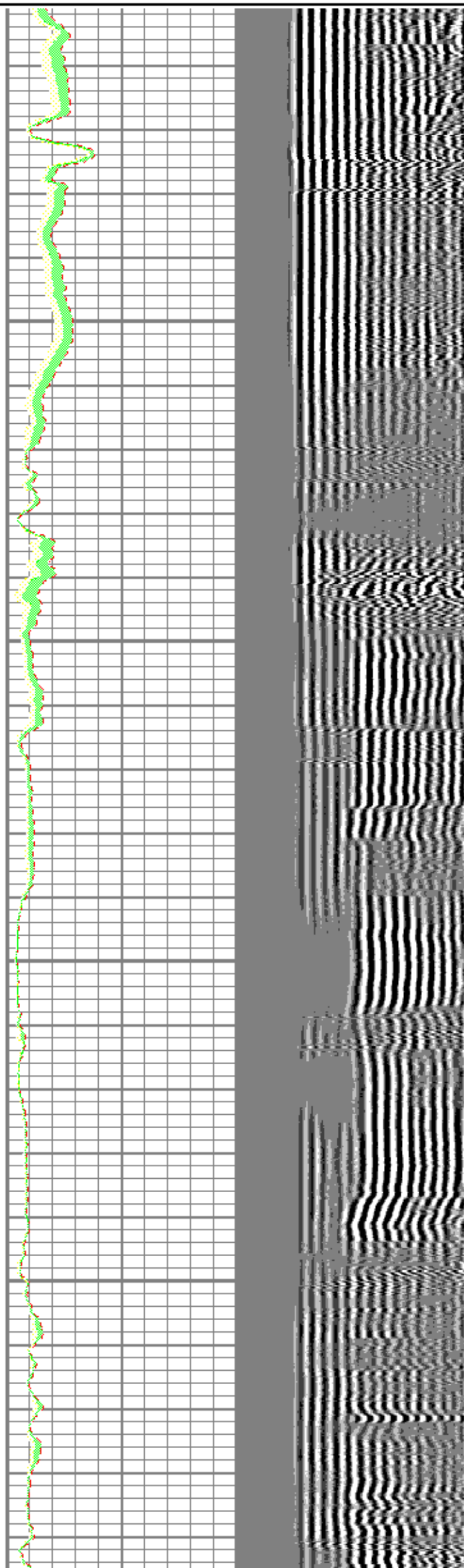


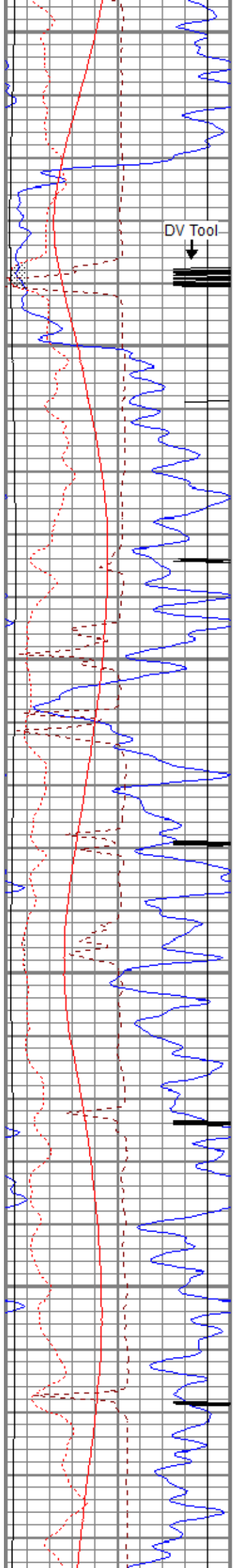




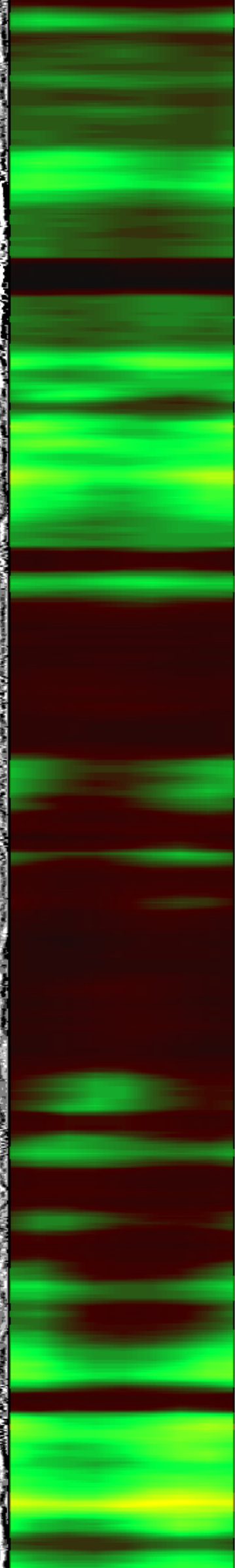
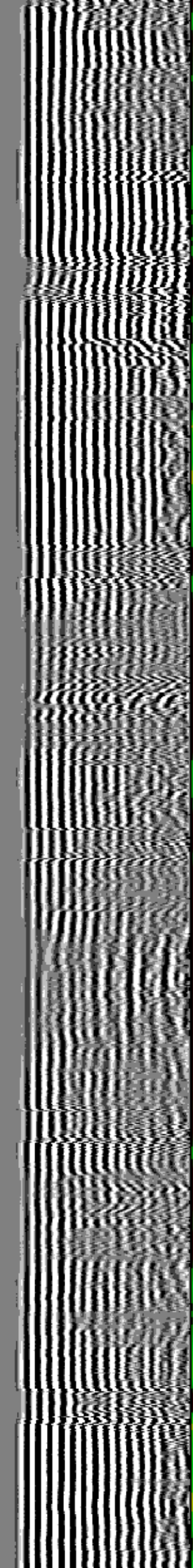
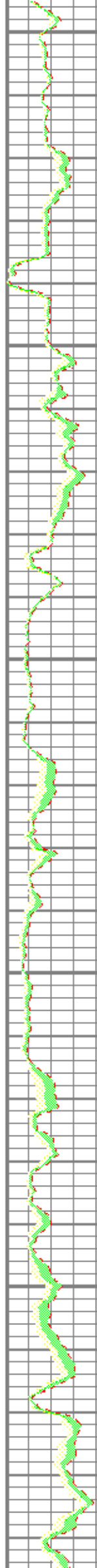


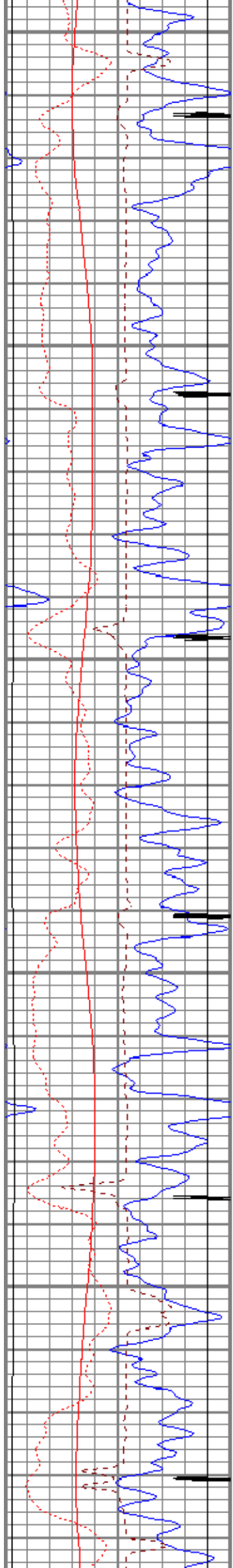
2600  
2650  
2700  
2750





2800  
2850  
2900  
2950  
3000





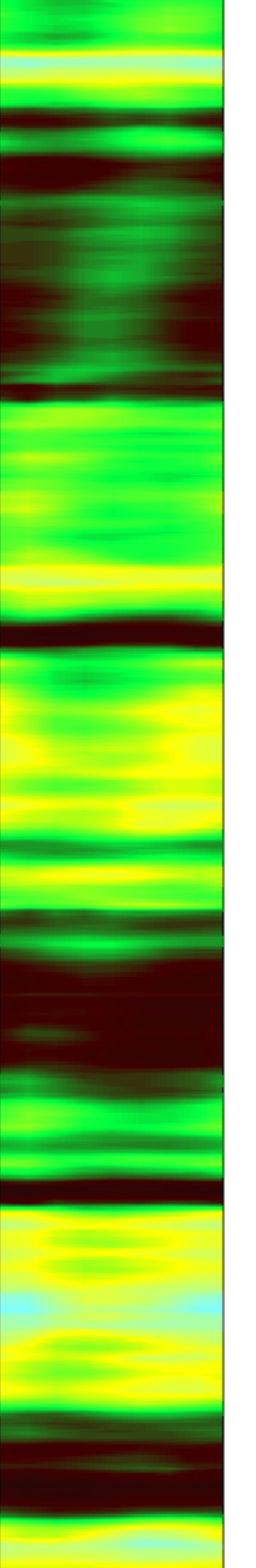
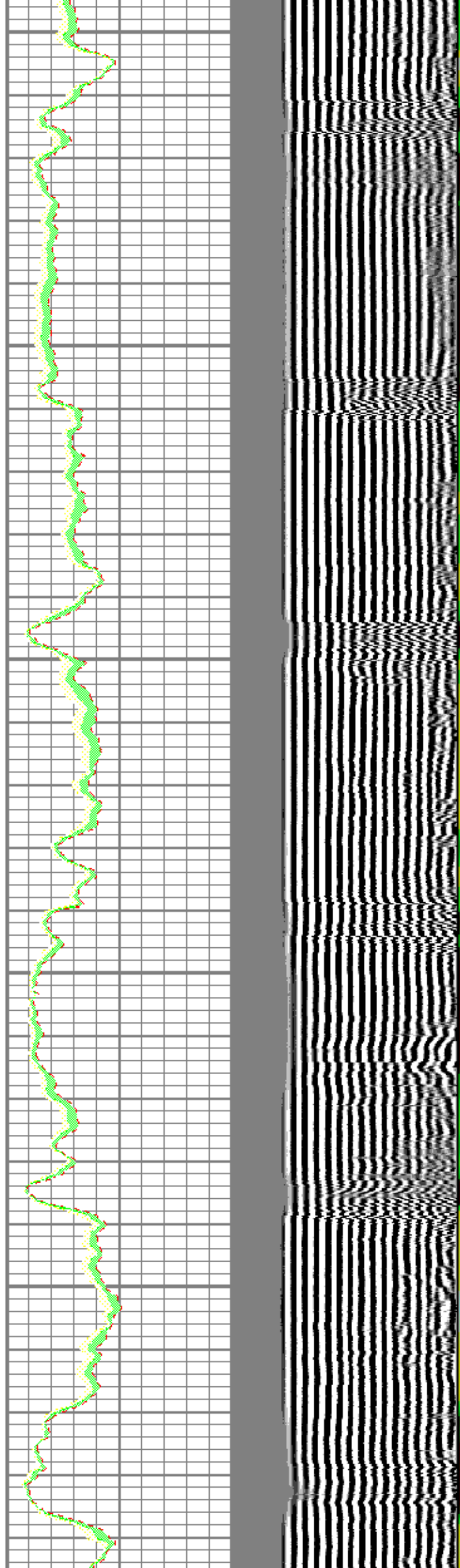
3050

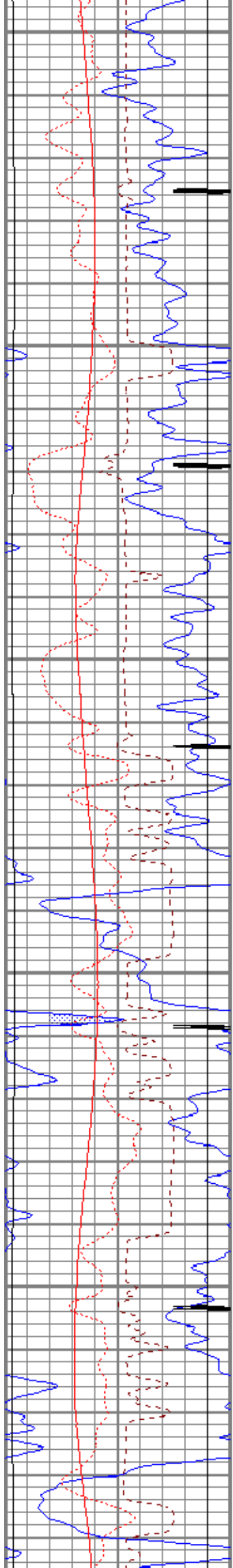
3100

3150

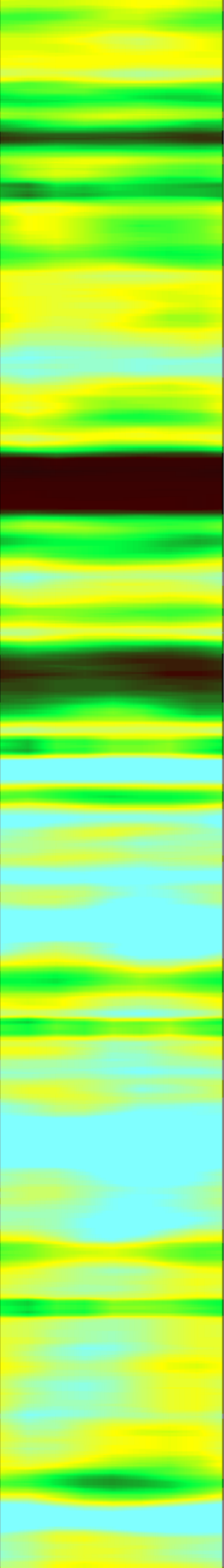
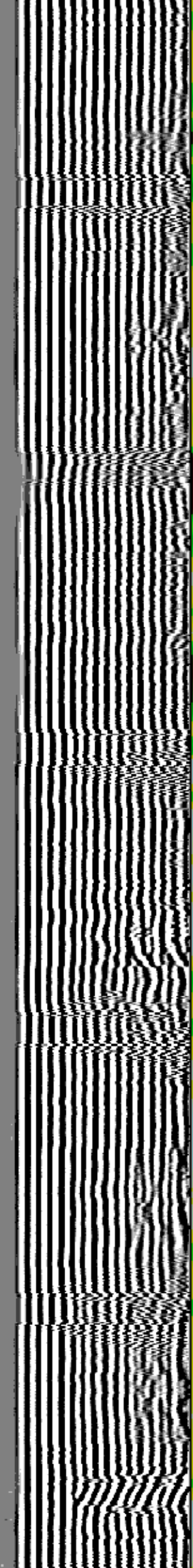
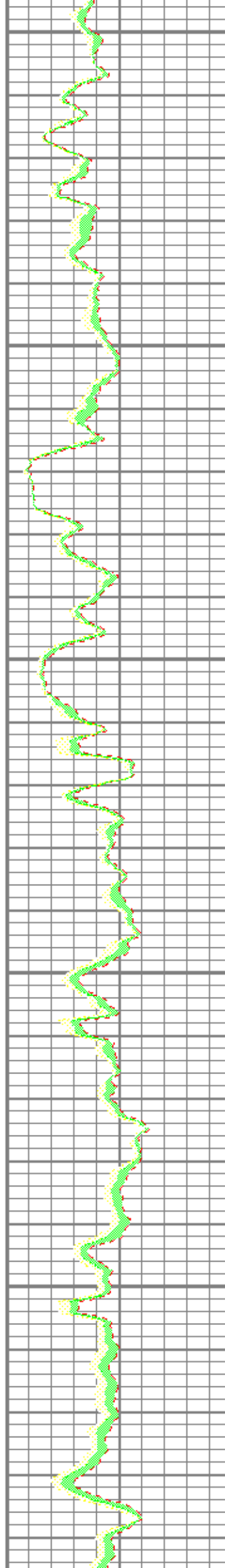
3200

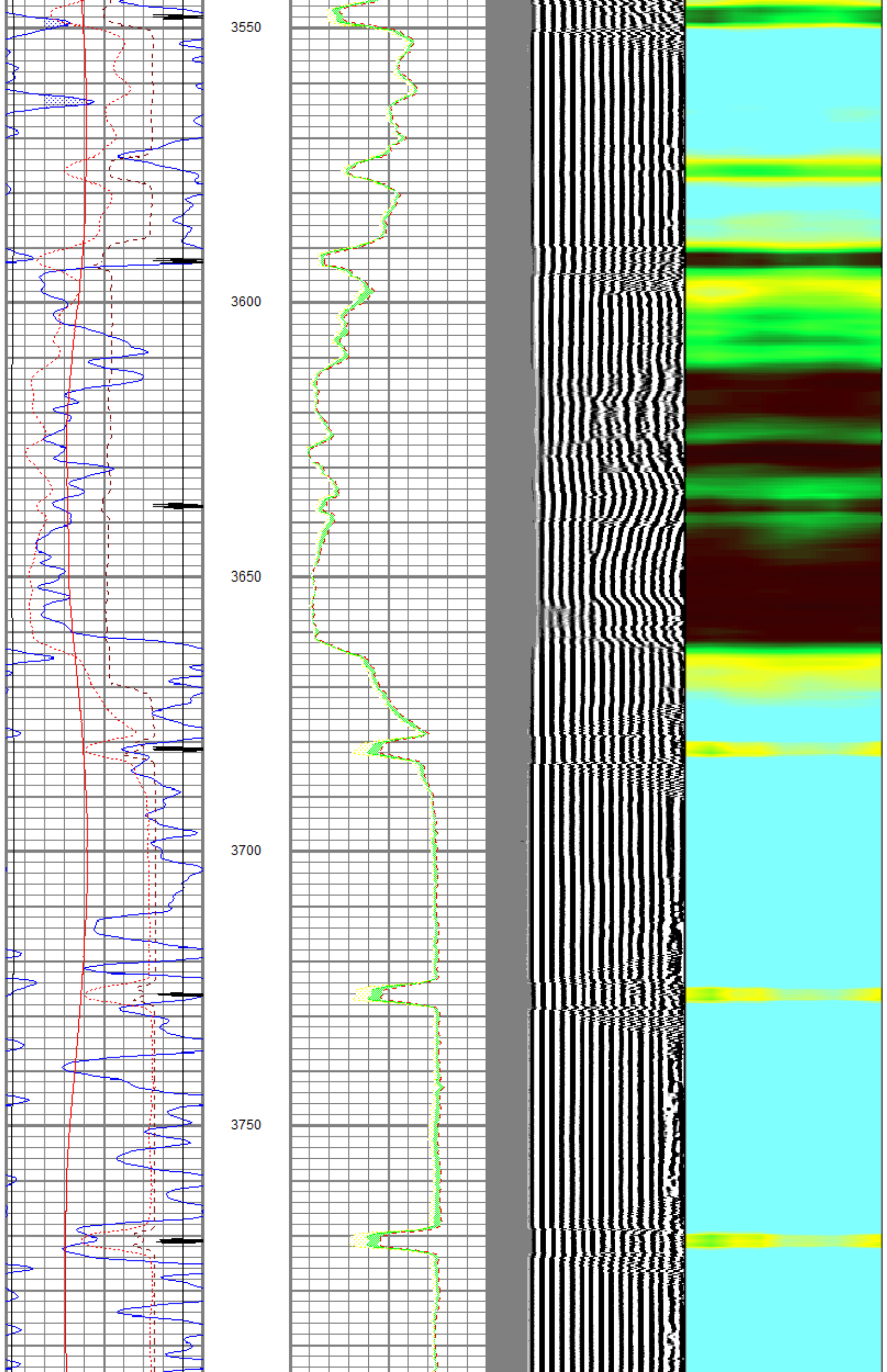
3250

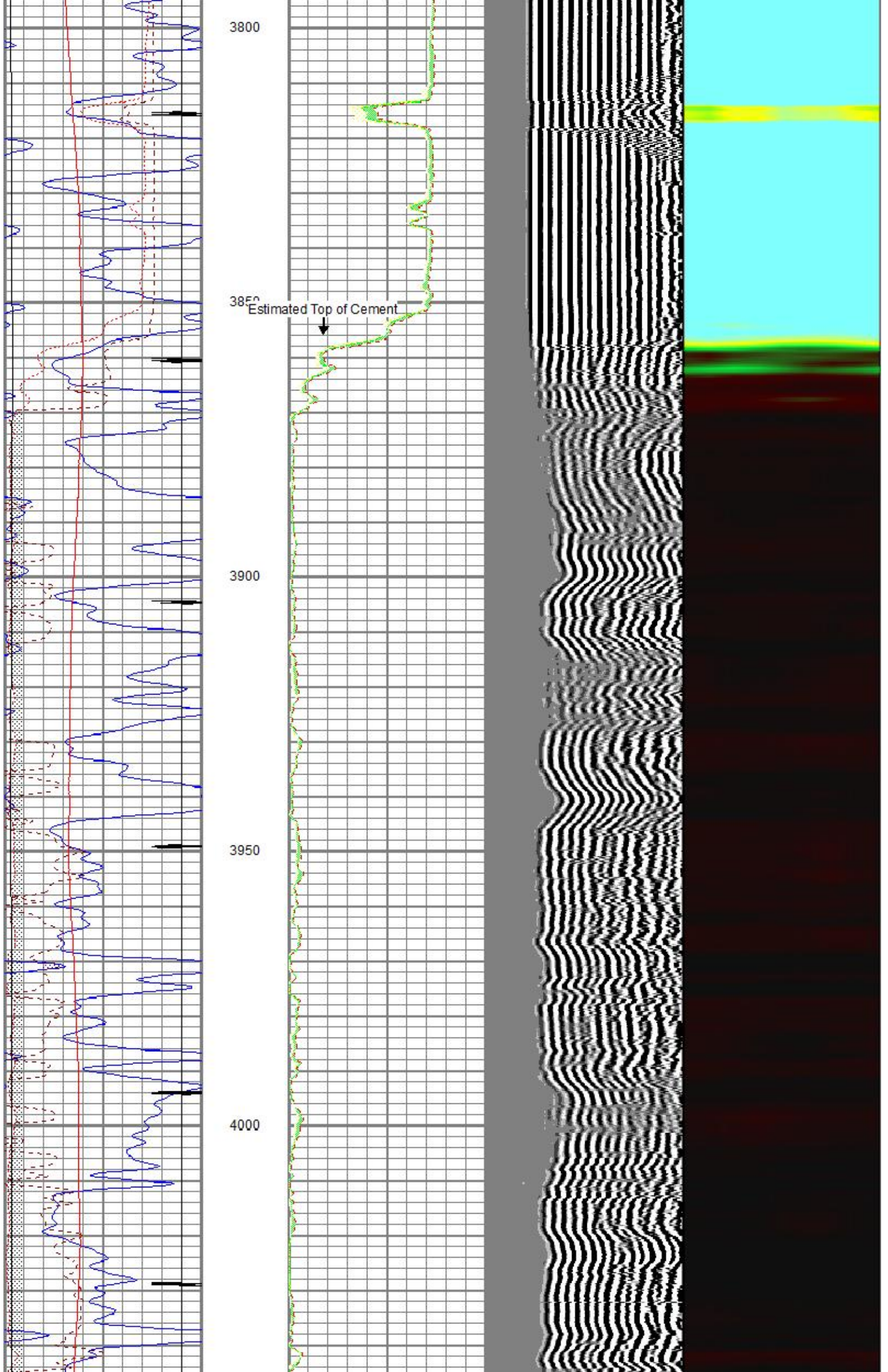


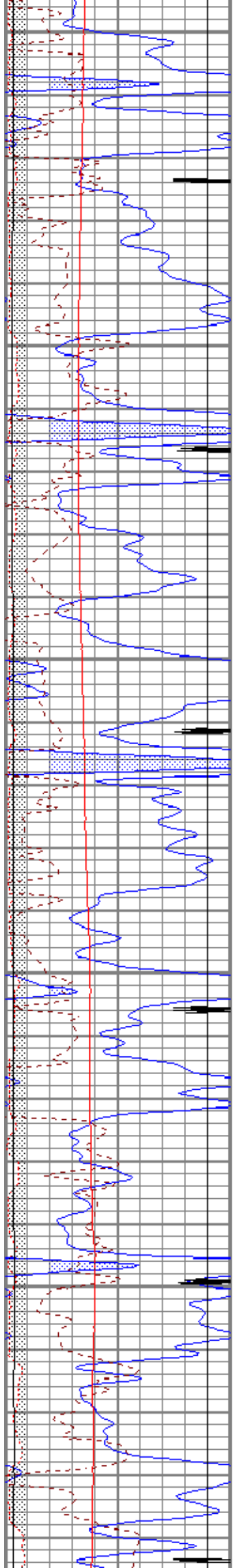


3300  
3350  
3400  
3450  
3500









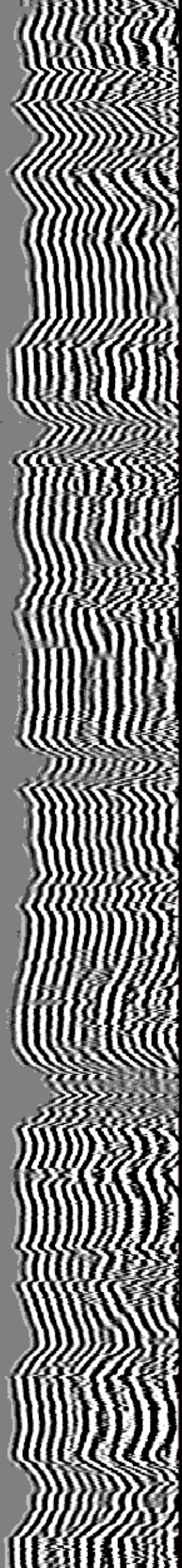
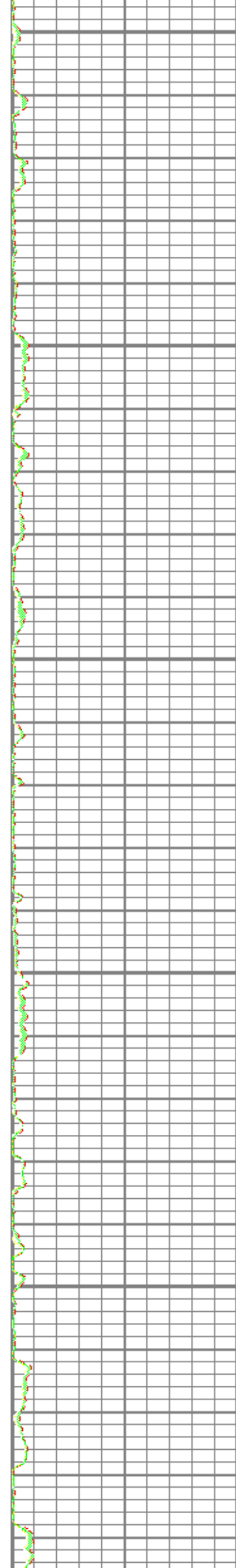
4050

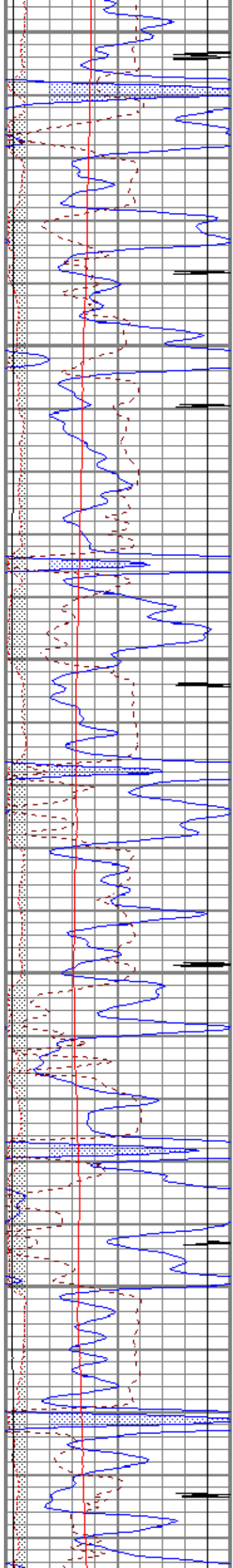
4100

4150

4200

4250





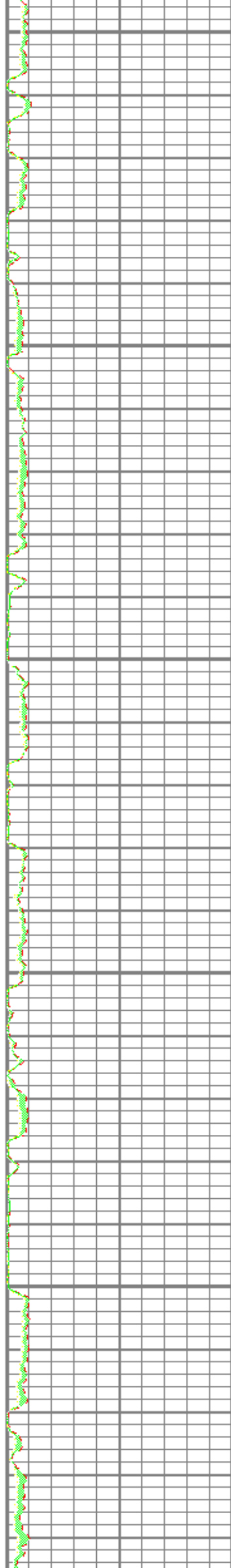
4300

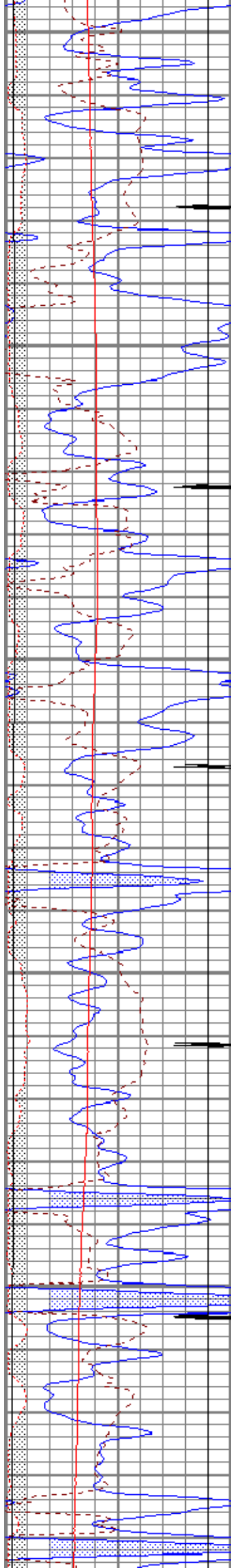
4350

4400

4450

4500





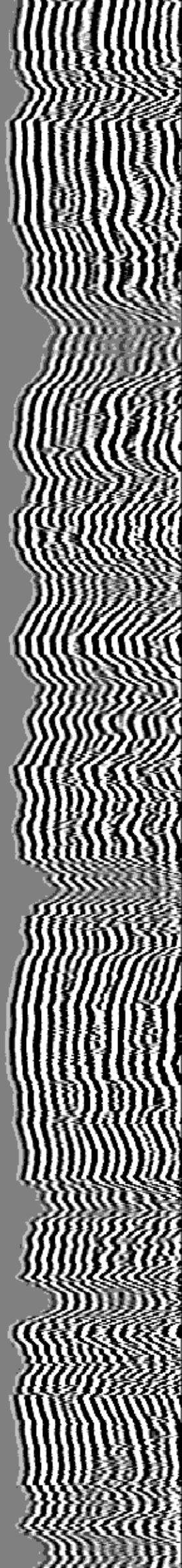
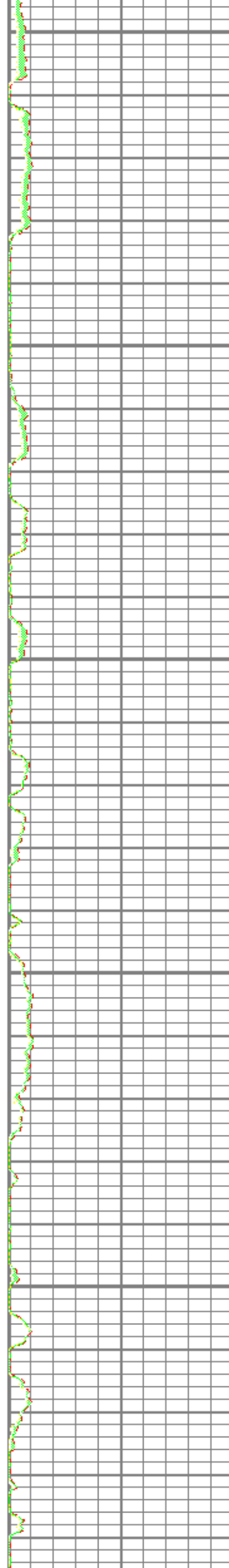
4550

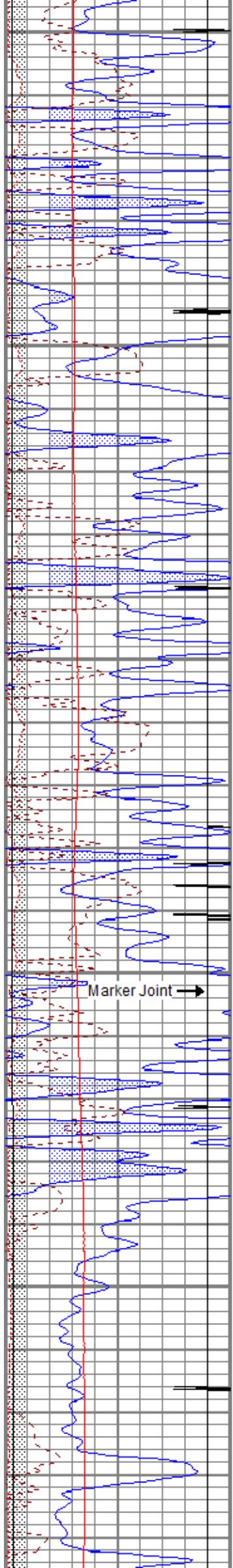
4600

4650

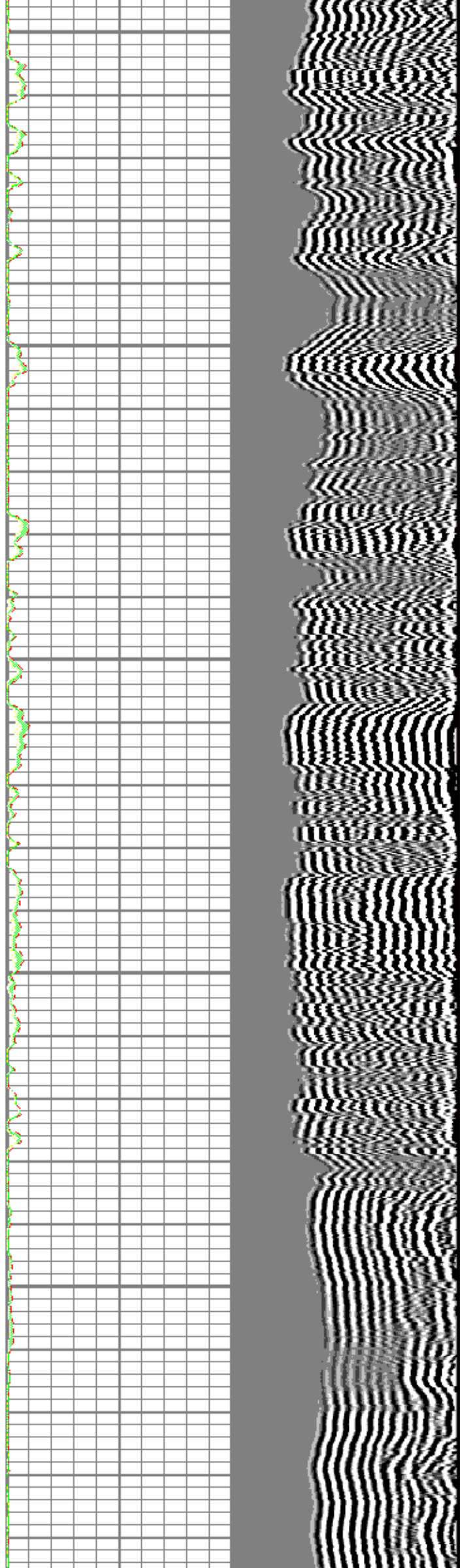
4700

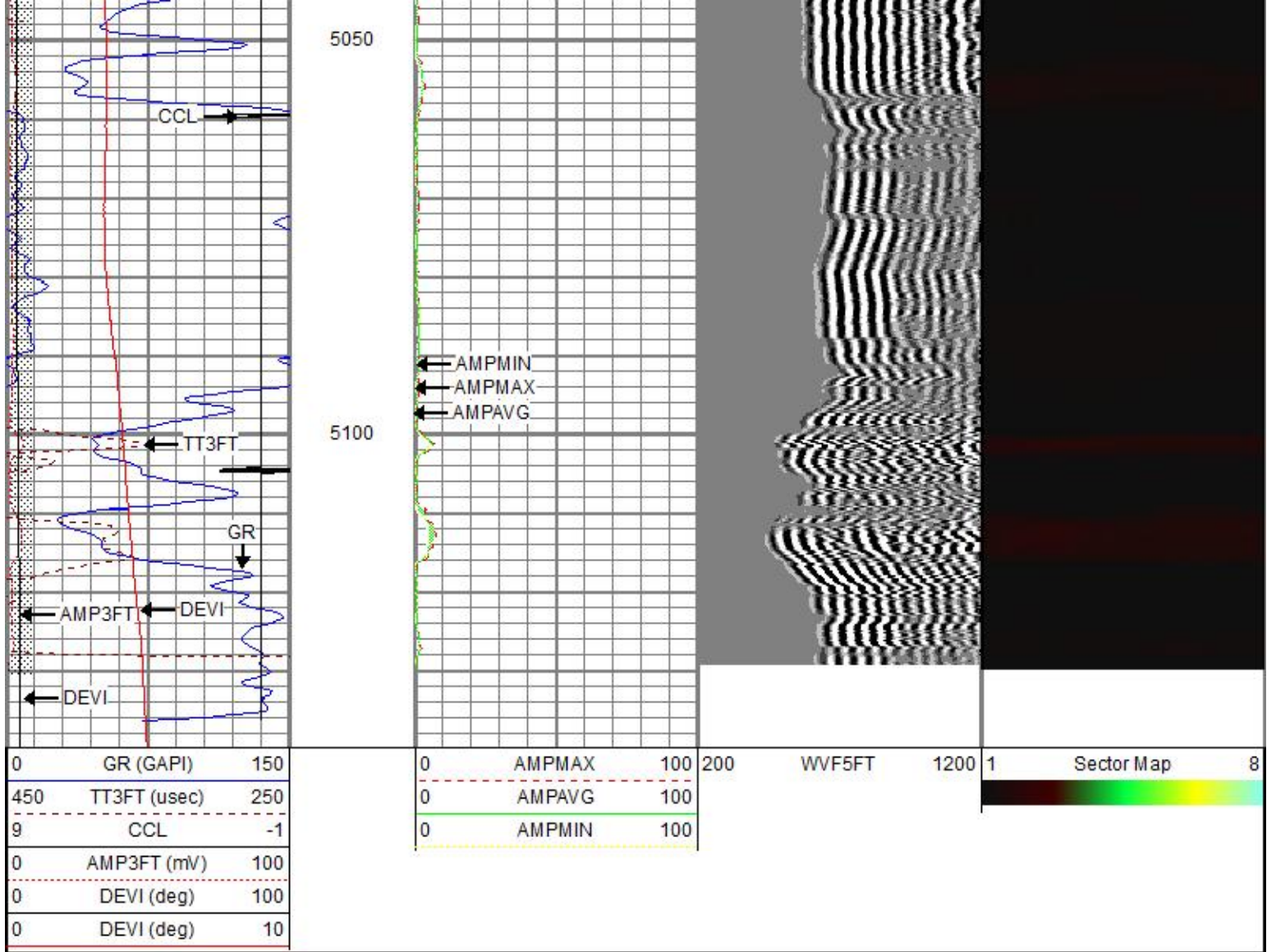
4750





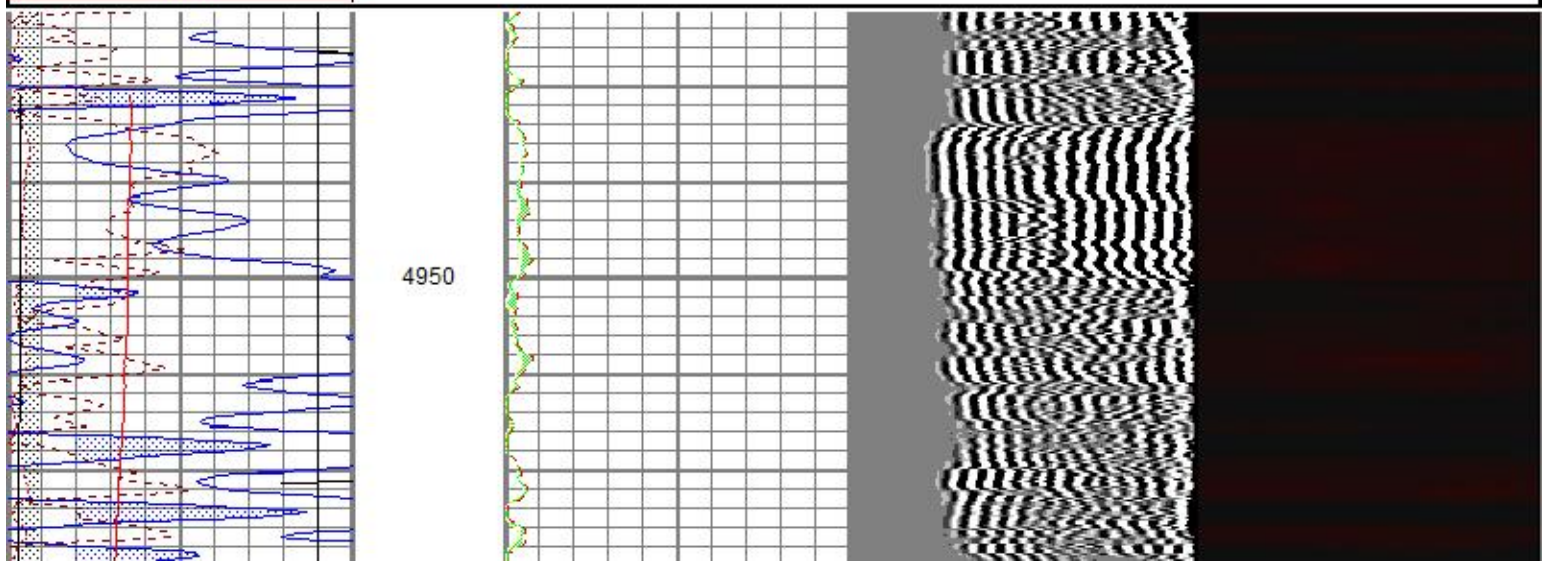
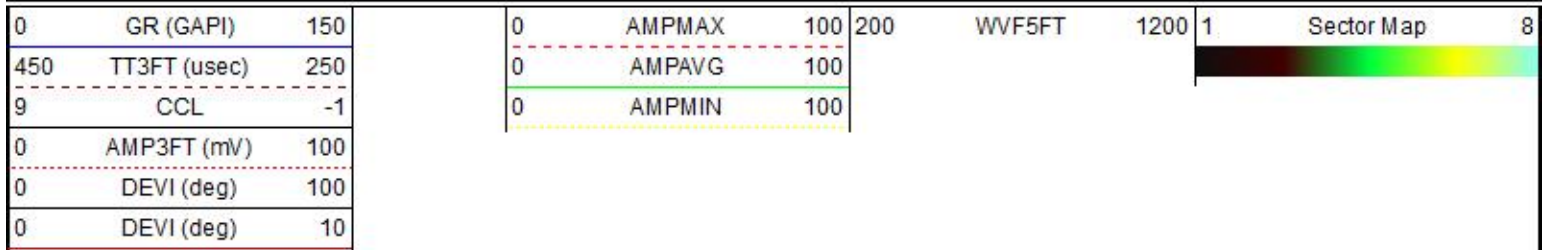
4800  
4850  
4900  
4950  
5000

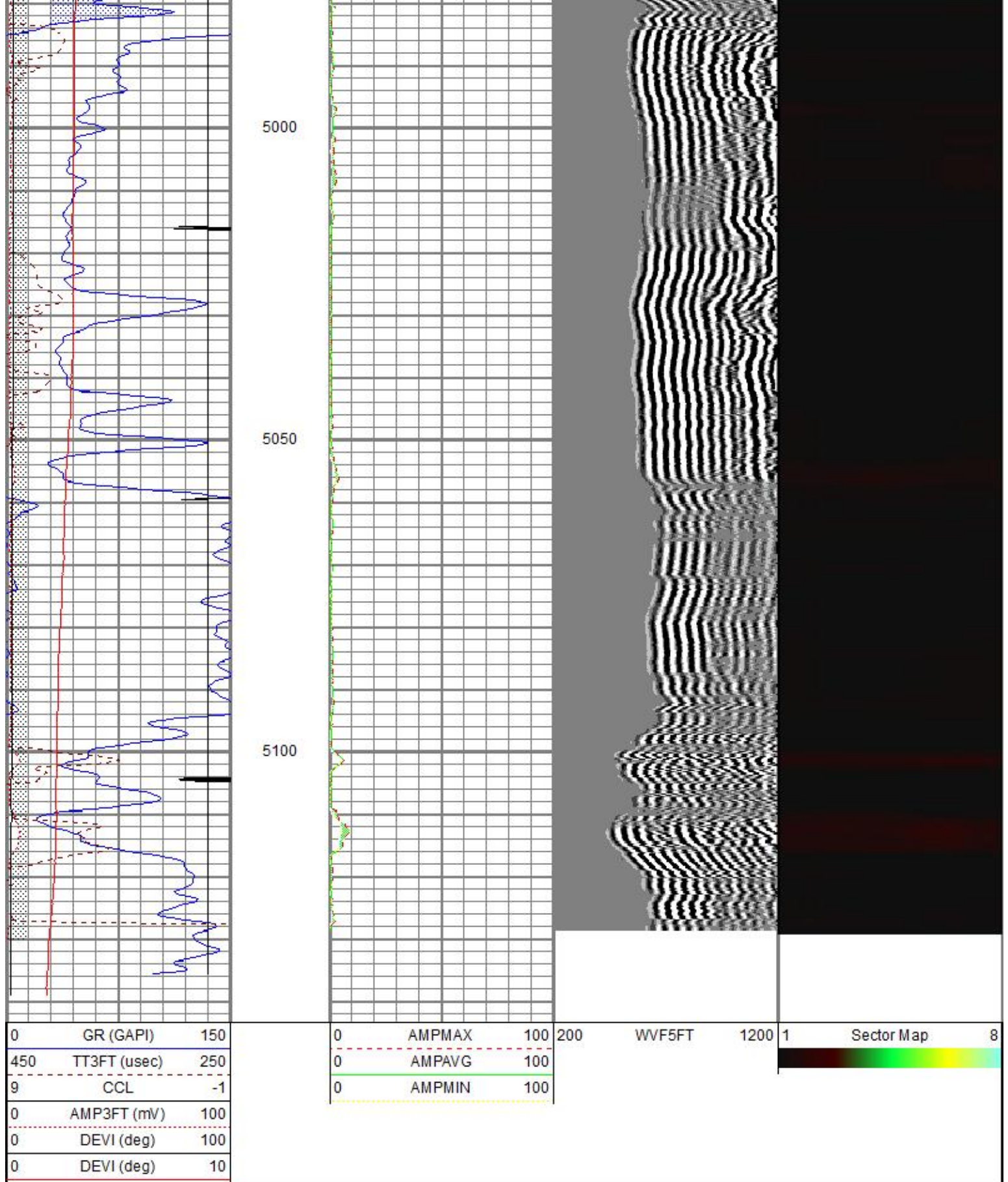




# Repeat Section

Database File roeritadoidgeno1-34cbl.db  
 Dataset Pathname pass1  
 Presentation Format sectorco  
 Dataset Creation Fri Jan 20 17:14:15 2017  
 Charted by Depth in Feet scaled 1:240





Sensor	Offset (ft)	Schematic	Description	Length (ft)	O.D. (in)	Weight (lb)	
			CENT-275 2 3/4" Centralizer	2.94	2.75	10.00	
WVFS8	11.63						
WVFS7	11.63						
WVFS6	11.63						
WVFS5	11.63						
WVFS4	11.63			RBT-Probe (080321) Prototype Probe Radii Bond Tool with Digital Telemetry	8.33	2.75	90.00
WVFS3	11.63						
WVFS2	11.63						
WVFS1	11.63						
WVFCAL	11.63						
WVFS5FT	11.63						

WVF5FT	11.63		CENT-275 2 3/4" Centralizer	2.94	2.75	10.00	
CCL	3.50						
ACCZ	1.83						
ACCY	1.83						
ACCX	1.83			GR-275D_INC (080616) 2-3/4" GR-CCL with Inclination	4.50	2.75	
GR	0.83						
Dataset: roeritadoidgeno1-34cbl.db: field/well/run1/pass5 Total length: 18.71 ft Total weight: 110.00 lb O.D.: 2.75 in							

Calibration Report	
Database File	roeritadoidgeno1-34cbl.db
Dataset Pathname	pass5
Dataset Creation	Fri Jan 20 18:28:30 2017

Gamma Ray Calibration Report	
Serial Number:	080616
Tool Model:	275D_INC
Performed:	Fri Dec 23 10:02:00 2016
Calibrator Value:	1.0 GAPI
Background Reading:	0.0 cps
Calibrator Reading:	1.0 cps
Sensitivity:	1.8000 GAPI/cps

Inclinometer Calibration Report					
Performed:	Mon Feb 22 09:45:37 2016				
	Low Read.	High Read.	Low Ref.	High Ref.	
X Accelerometer	-3560.40	3602.00	-1.00	1.00	gee
Y Accelerometer	-3645.40	3546.20	-1.00	1.00	gee
Z Accelerometer	6.60	3581.20	0.00	1.00	gee

Segmented Cement Bond Log Calibration Report			
Serial Number:	080321		
Tool Model:	Probe		
Calibration Casing Diameter:	5.500	in	
Calibration Depth:	3713.415	ft	

Master Calibration, performed Fri Jan 20 17:07:37 2017:						
	Raw (v)		Calibrated (mv)		Results	
	Zero	Cal	Zero	Cal	Gain	Offset
3'	0.007	1.084	1.000	71.921	65.844	0.556
CAL	0.007	1.396				
5'	0.007	0.969	1.000	71.921	73.711	0.490
SUM						
S1	0.007	1.125	0.000	72.000	64.414	-0.441
S2	0.007	1.121	0.000	72.000	64.595	-0.438
S3	0.007	1.104	0.000	72.000	65.605	-0.455
S4	0.007	1.073	0.000	72.000	67.543	-0.471
S5	0.007	1.034	0.000	72.000	70.056	-0.469
S6	0.007	1.014	0.000	72.000	71.467	-0.492
S7	0.007	1.041	0.000	72.000	69.657	-0.483
S8	0.007	1.076	0.000	72.000	67.315	-0.462

Internal Reference Calibration, performed Thu Dec 04 16:30:55 2008:						
---	--	--	--	--	--	--

	Raw (v)		Calibrated (v)		Results	
	<u>Zero</u>	<u>Cal</u>	<u>Zero</u>	<u>Cal</u>	<u>Gain</u>	<u>Offset</u>
CAL	0.000	0.000	0.007	1.396	1.000	0.000

Air Zero Calibration, performed Mon Jan 11 14:07:53 2016:

	Raw (v)	Calibrated (v)	Results
	<u>Zero</u>	<u>Zero</u>	<u>Offset</u>
3'	0.000	0.000	0.000
5'	0.000	0.000	0.000
SUM			
S1	0.000	0.000	0.000
S2	0.000	0.000	0.000
S3	0.000	0.000	0.000
S4	0.000	0.000	0.000
S5	0.000	0.000	0.000
S6	0.000	0.000	0.000
S7	0.000	0.000	0.000
S8	0.000	0.000	0.000