



**COMPLETION  
& PRODUCTION  
SERVICES CO.**

**MICRO  
LOG**

Company MAI OIL OPERATIONS, INC.  
Well HAMMEKE "B" #7  
Field SYMS SOUTHEAST  
County STAFFORD  
State KANSAS

Company MAI OIL OPERATIONS, INC.  
Well HAMMEKE "B" #7  
Field SYMS SOUTHEAST  
County STAFFORD State KANSAS

Location: API # : 15-185-23930-0000  
1230' FSL & 2310' FEL  
N/2 NW SW SE  
SEC 21 TWP 21S RGE 12W  
Permanent Datum GROUND LEVEL Elevation 1846  
Log Measured From KELLY BUSHING 8' A.G.L.  
Drilling Measured From KELLY BUSHING  
Other Services  
CDL/CNL  
DIL  
Elevation  
K.B. 1854  
D.F. 1852  
G.L. 1846

Date	3/22/15		
Run Number	TWO		
Depth Driller	3700		
Depth Logger	3704		
Bottom Logged Interval	3702		
Top Log Interval	2800		
Casing Driller	8 5/8" @ 645'		
Casing Logger	644		
Bit Size	7 7/8"		
Type Fluid in Hole	CHEMICAL MUD	CHLORIDES 5000 PPM	
Density / Viscosity	9.2/50		
pH / Fluid Loss	9.5/8.8		
Source of Sample	FLOWLINE		
Rm @ Meas. Temp	1.2 @ 56F		
Rmt @ Meas. Temp	.90 @ 56F		
Rmc @ Meas. Temp	1.44 @ 56F		
Source of Rmf / Rmc	MEASUREMENT		
Rm @ BHT	.59 @ 113F		
Time Circulation Stopped	2 HOURS		
Time Logger on Bottom			
Maximum Recorded Temperature	113F		
Equipment Number	4010		
Location	HAYS, KANSAS		
Recorded By	JASON CAPPELLUCCI		
Witnessed By	WYATT URBAN		

<<< Fold Here >>>

All interpretations are opinions based on inferences from electrical or other measurements and we cannot and do not guarantee the accuracy or correctness of any interpretation, and we shall not, except in the case of gross or willful negligence on our part, be liable or responsible for any loss, costs, damages, or expenses incurred or sustained by anyone resulting from any interpretation made by any of our officers, agents or employees. These interpretations are also subject to our general terms and conditions set out in our current Price Schedule.

**Comments**

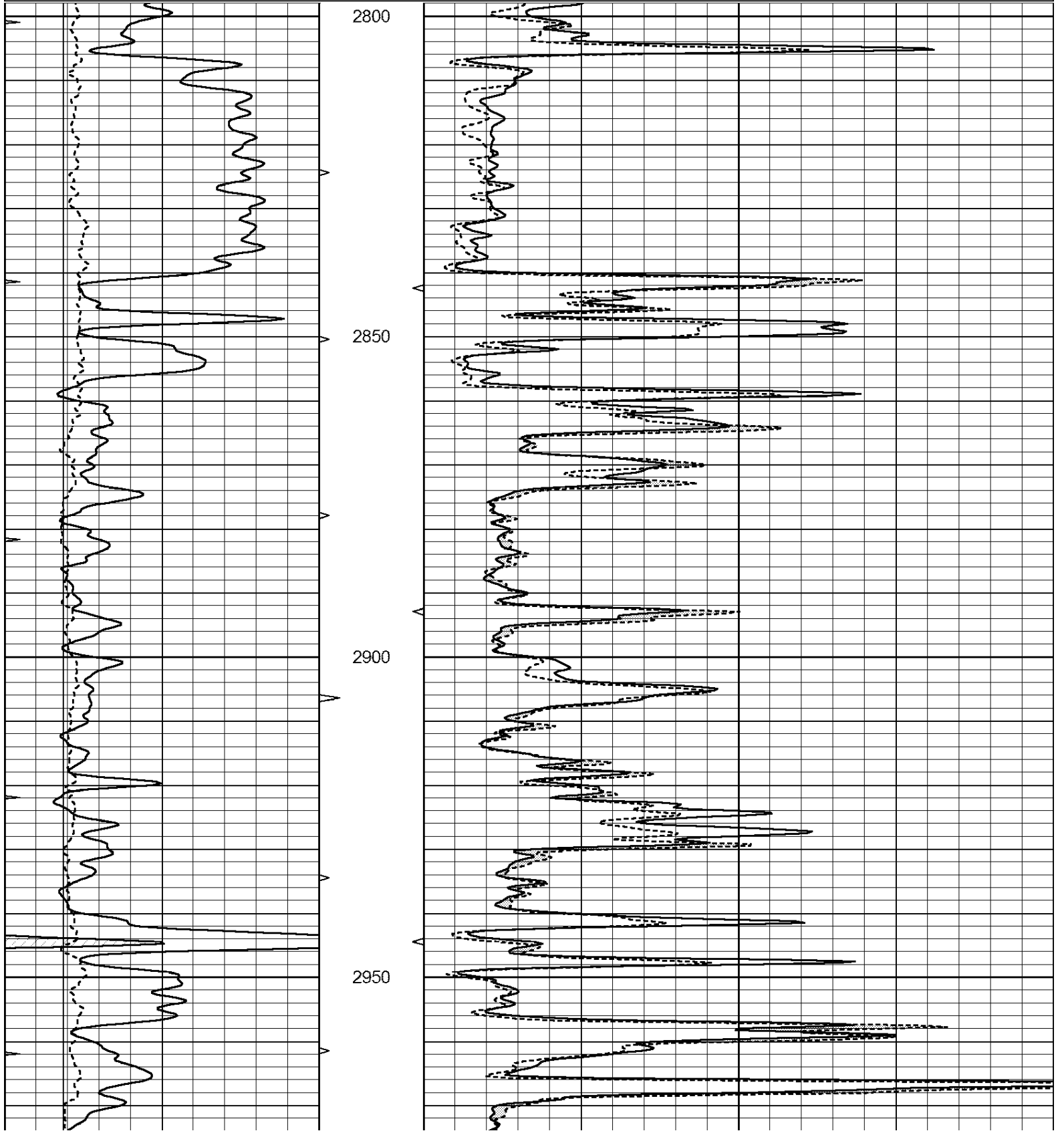
THANK YOU FOR USING NABORS, HAYS, KS. (785) 628-6395  
DIRECTIONS:  
GREAT BEND, KS. - SOUTH ACROSS COUNTY LINE TO 180TH RD.  
EAST TO 50TH RD. - 1/2 SOUTH - WEST INTO

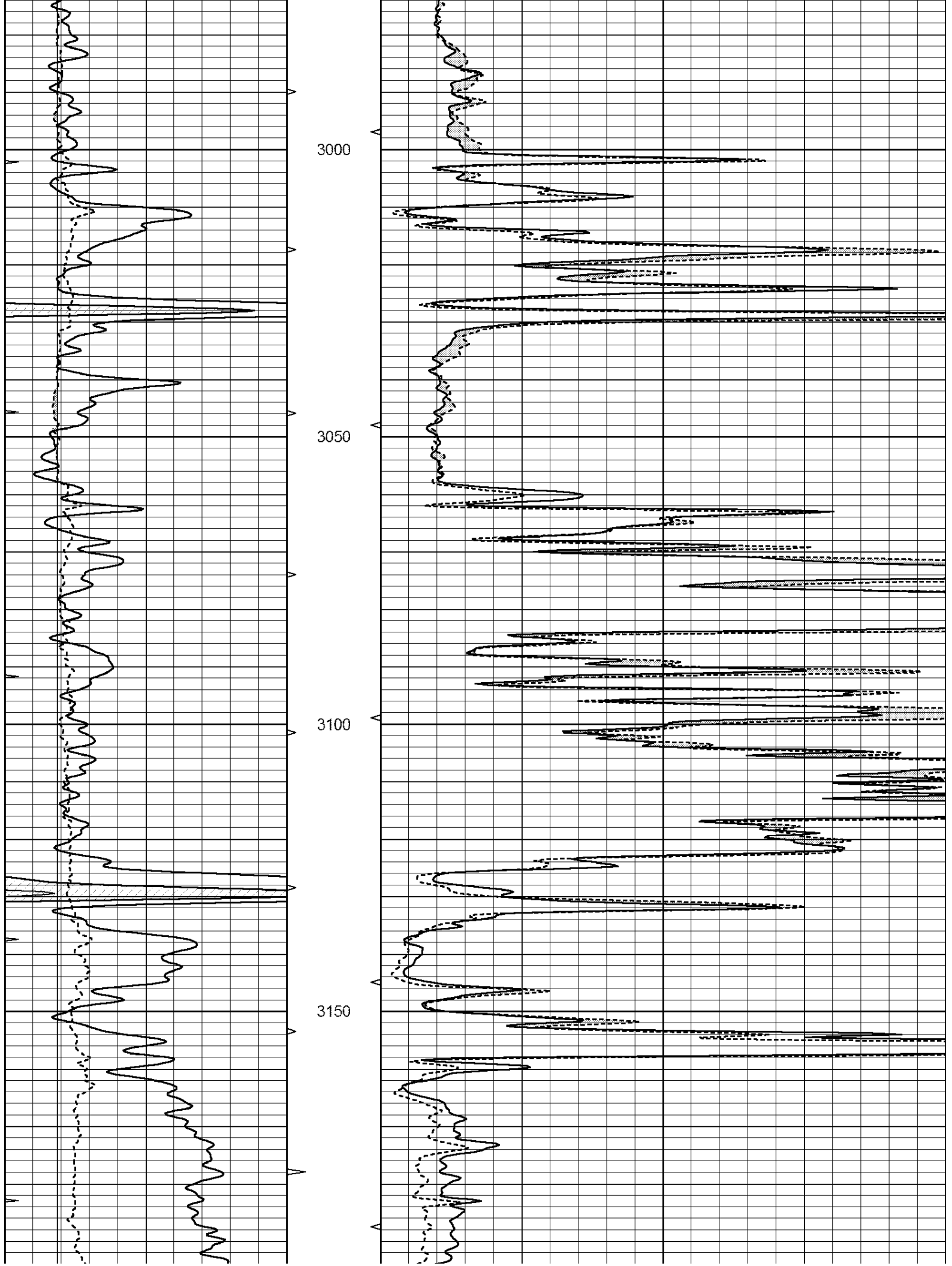


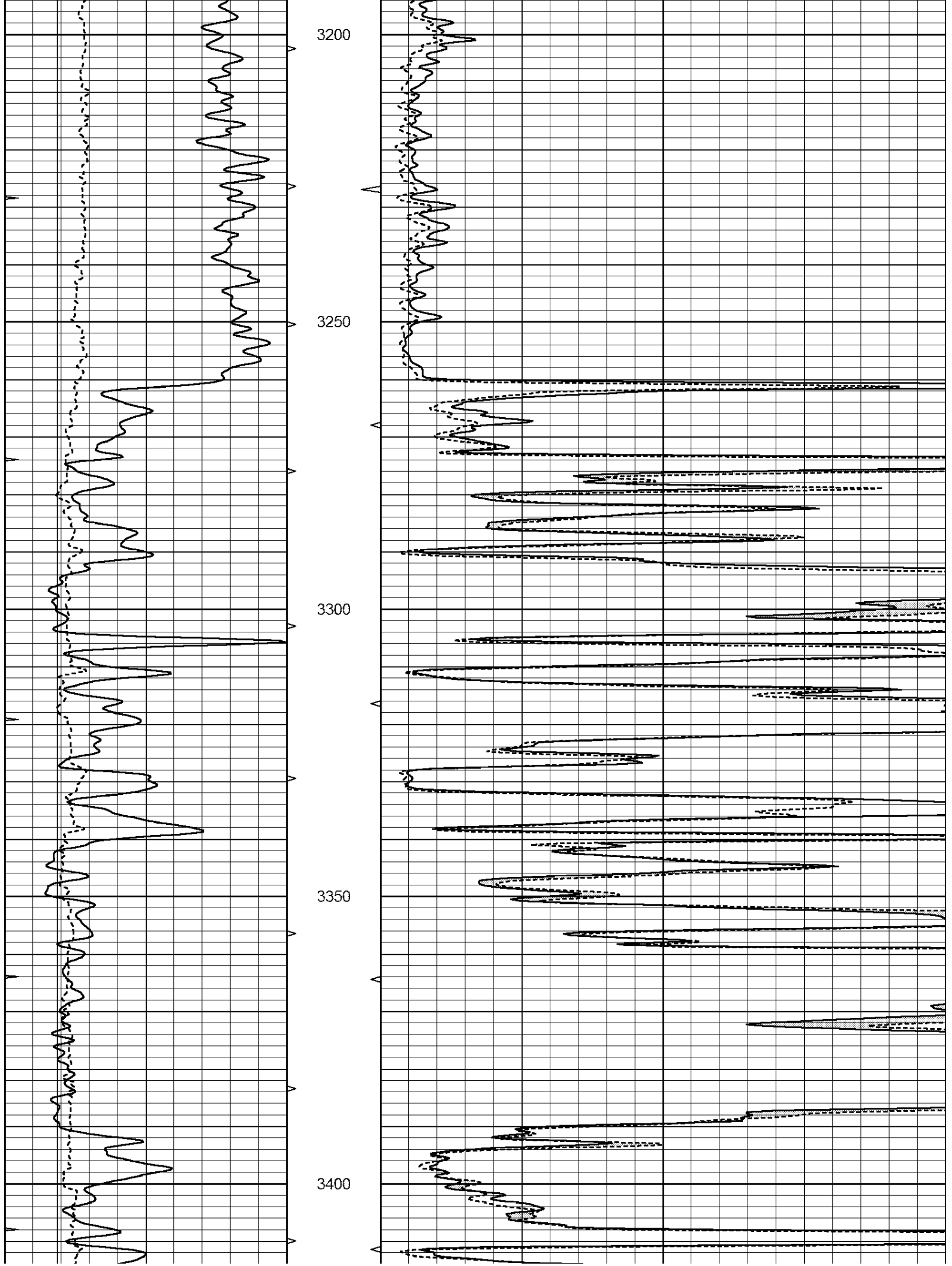
**MAIN SECTION**

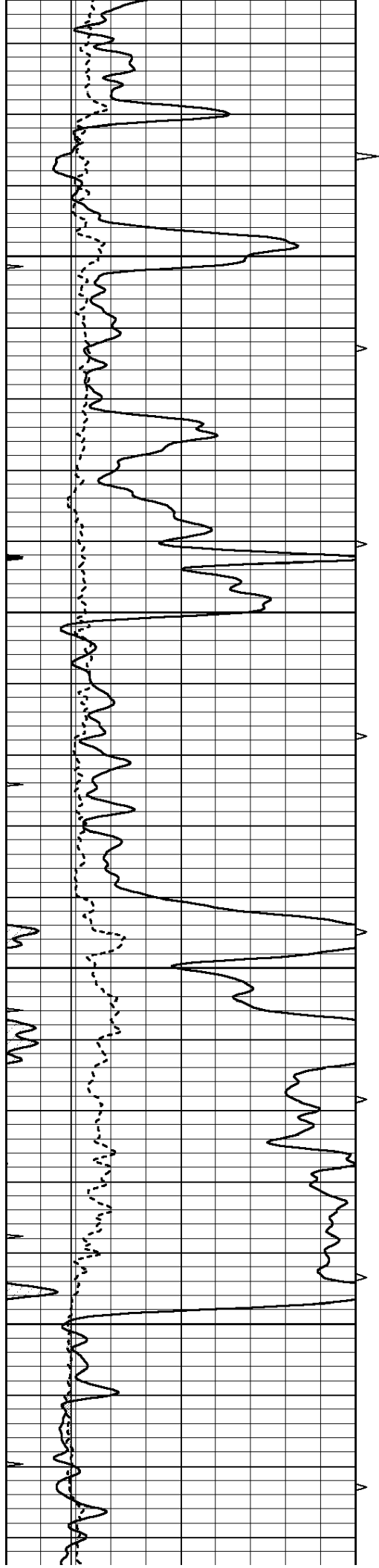
Database File: 26546ddn.db  
 Dataset Pathname: pass6.1  
 Presentation Format: \_micro  
 Dataset Creation: Sun Mar 22 06:44:52 2015 by Calc Open-Cased 090629  
 Charted by: Depth in Feet scaled 1:240

0	GAMMA RAY (GAPI)	150	ABHV	0	MEL1.5 (Ohm-m)	40
6	CALIPER (in)	16	10 (ft3)	0	MEL2.0 (Ohm-m)	40
0	MINMK	20	TBHV			
			0 (ft3)	10		







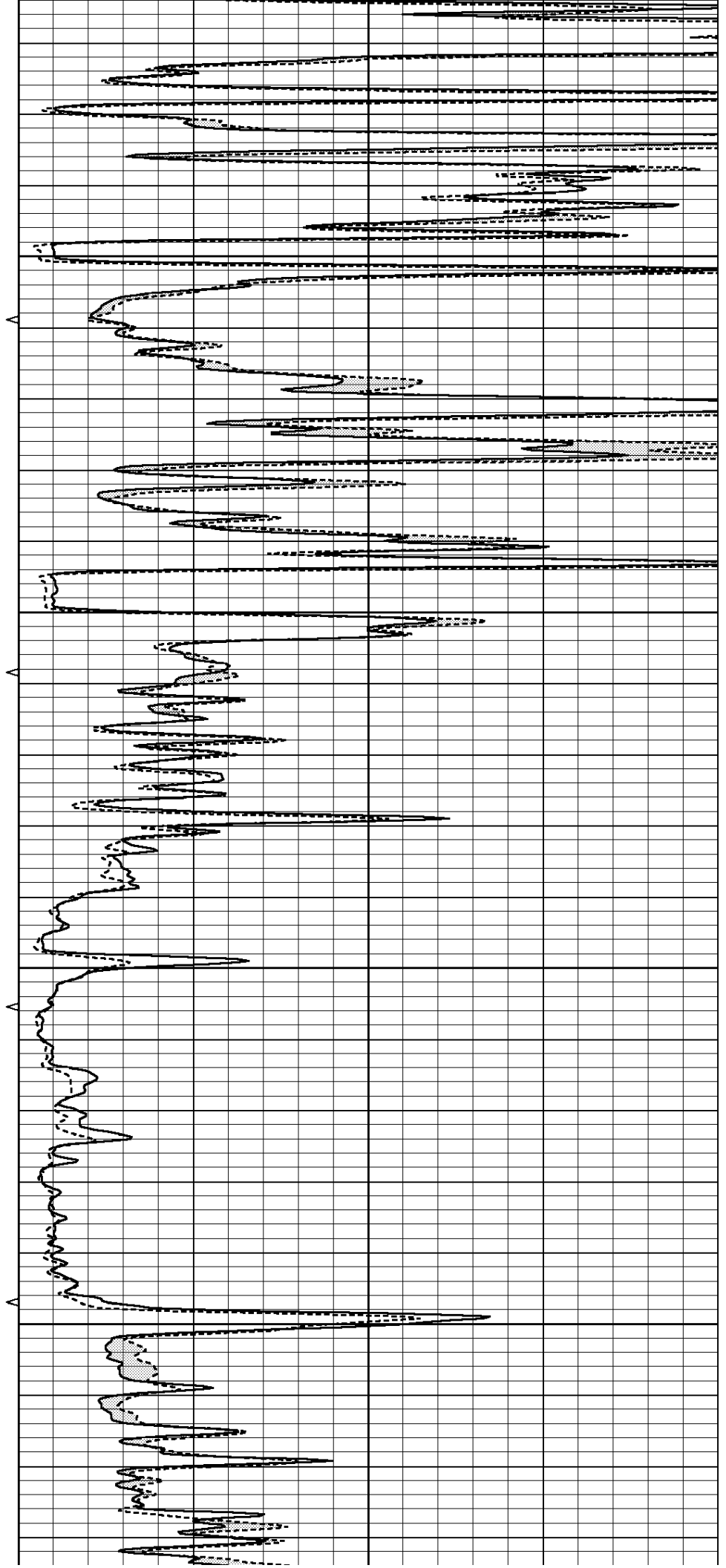


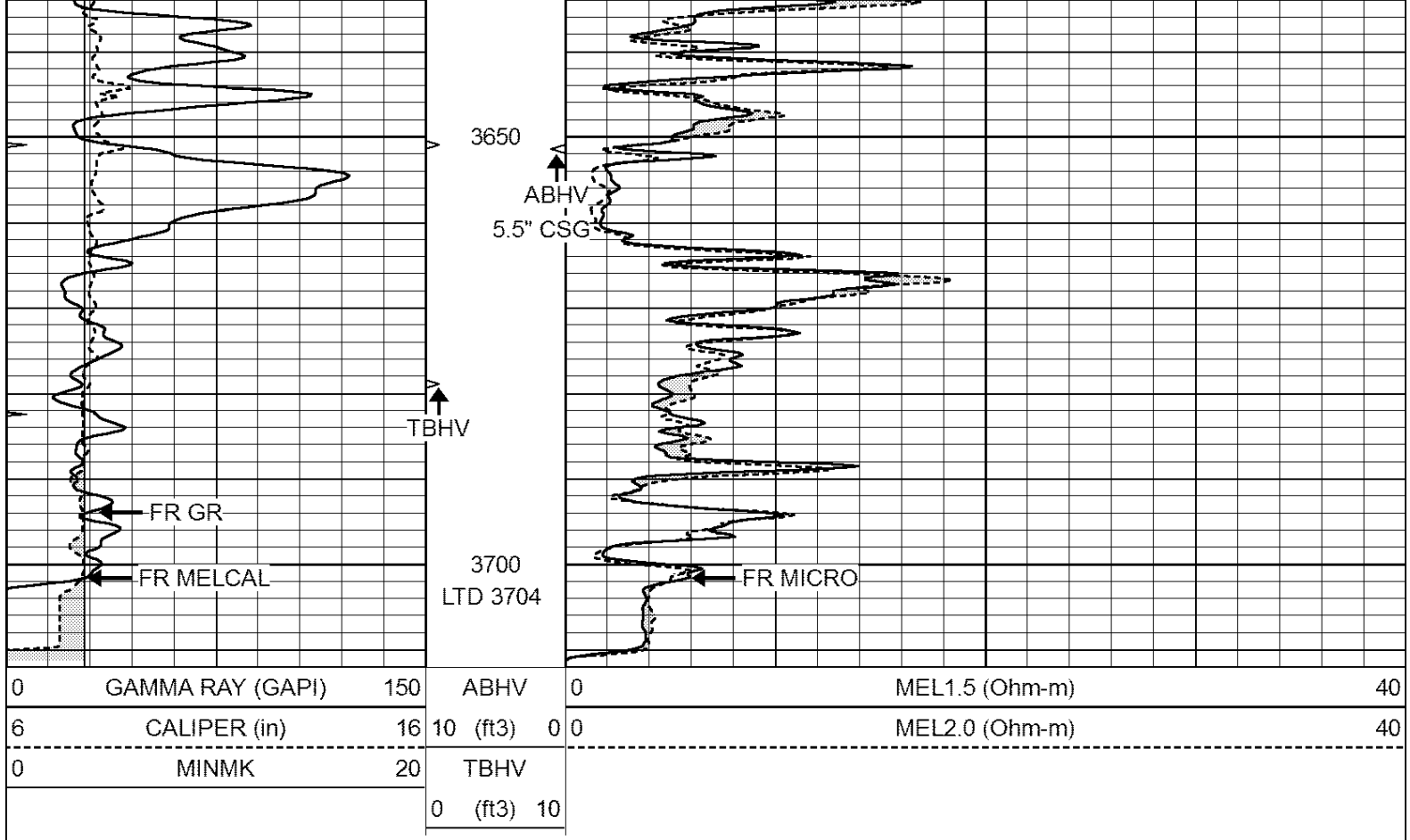
3450

3500

3550

3600

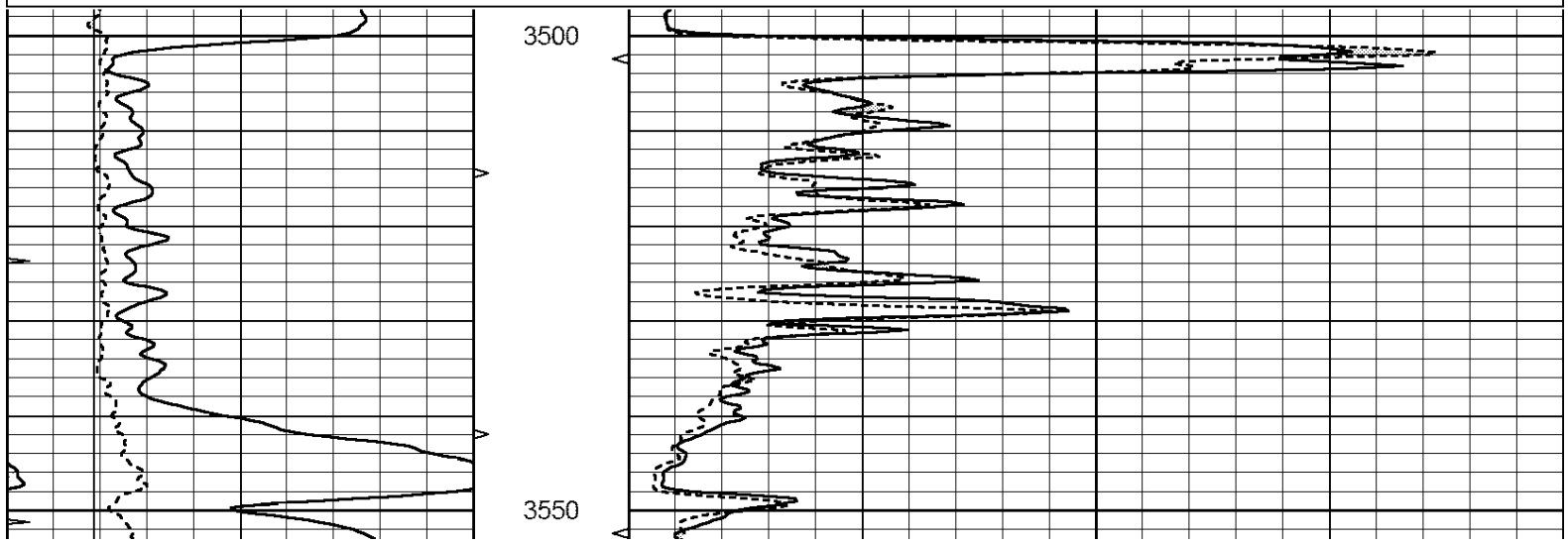


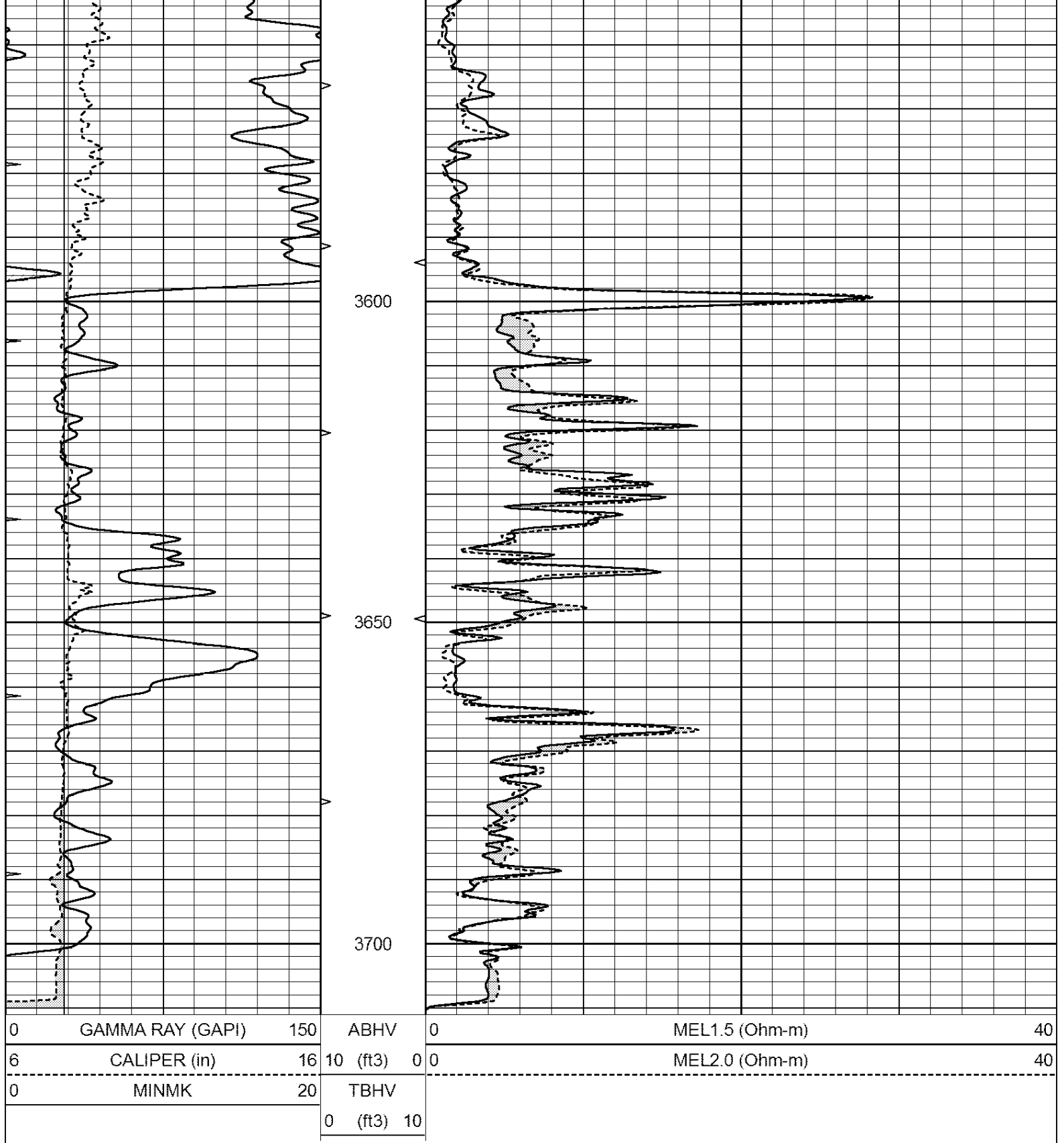


# REPEAT SECTION

Database File: 26546ddn.db  
 Dataset Pathname: pass5.1  
 Presentation Format: \_micro  
 Dataset Creation: Sun Mar 22 06:33:57 2015 by Calc Open-Cased 090629  
 Charted by: Depth in Feet scaled 1:240

0	GAMMA RAY (GAPI)	150	ABHV	0	MEL1.5 (Ohm-m)	40
6	CALIPER (in)	16	10 (ft3)	0 0	MEL2.0 (Ohm-m)	40
0	MINMK	20	TBHV			
			0 (ft3)	10		





Calibration Report

Database File: 26546ddn.db  
 Dataset Pathname: pass5.1  
 Dataset Creation: Sun Mar 22 06:33:57 2015 by Calc Open-Cased 090629

MICRO Calibration Report

Serial Number: MICRO3  
 Tool Model: PROBE  
 Performed: Thu Nov 17 03:06:31 2011

Caliper Calibration:	Gain=3.916	Offset=-9.871
References	Low Cal 8.000	High Cal 14.000
Readings	4.257	5.789
1.5" Calibration:	Gain=100.000	Offset=0.000
References	Low Cal 0.000	High Cal 20.000
Readings	0.004	0.228
2" Calibration:	Gain=150.553	Offset=-1.220
References	Low Cal 0.000	High Cal 20.000
Readings	0.005	0.175
Gamma Ray Calibration Report		
Serial Number:	GR6	
Tool Model:	OPEN	
Performed:	Sun Mar 08 22:55:40 2015	
Calibrator Value:	150.0	GAPI
Background Reading:	0.0	cps
Calibrator Reading:	276.0	cps
Sensitivity:	0.8000	GAPI/cps