



MIDWEST SURVEYS
 LOGGING - PERFORATING - CONSULTING SERVICES
 P.O. Box 88, Osawatomie, KS 66064
 913.755.2428

GAMMA RAY / NEUTRON / CCL

File No.

Company **JTC Oil, Inc.**

Well **Chase No. P-10**

Field **Paola / Rantoul**

County **Franklin** State **Kansas**

Location **165' FNL & 1485' FWL**

Other Services **Perforate**

Sec. **33** Twp. **17S** Rge. **21E**

Permanent Datum **GL** Elevation **927'**

Log Measured From **GL**

Drilling Measured From **GL**

Date **03-05-2015**

Run Number **One**

Depth Diller **720.0**

Depth Logger **681.2**

Bottom Logged Interval **680.2**

Top Log Interval **20.0**

Fluid Level **Full**

Type Fluid **Water**

Density / Viscosity **NA**

Salinity - PPM Cl **NA**

Max Recorded Temp **NA**

Estimated Cement Top **0.0**

Equipment No **102** Location **Osawatomie**

Recorded By **Gary Windisch**

Witnessed By **Tom Cain**

BORE-HOLE RECORD

RUN No. BIT FROM TO SIZE WGT. FROM TO

One 9.875" 0.0 20.0 7.00" 17.0# 0.0 20.0

Two 5.825" 20.0 720.0 2.875" 6.5# 0.0 693.0

CASING RECORD

RUN No. BIT FROM TO SIZE WGT. FROM TO

One 9.875" 0.0 20.0 7.00" 17.0# 0.0 20.0

Two 5.825" 20.0 720.0 2.875" 6.5# 0.0 693.0

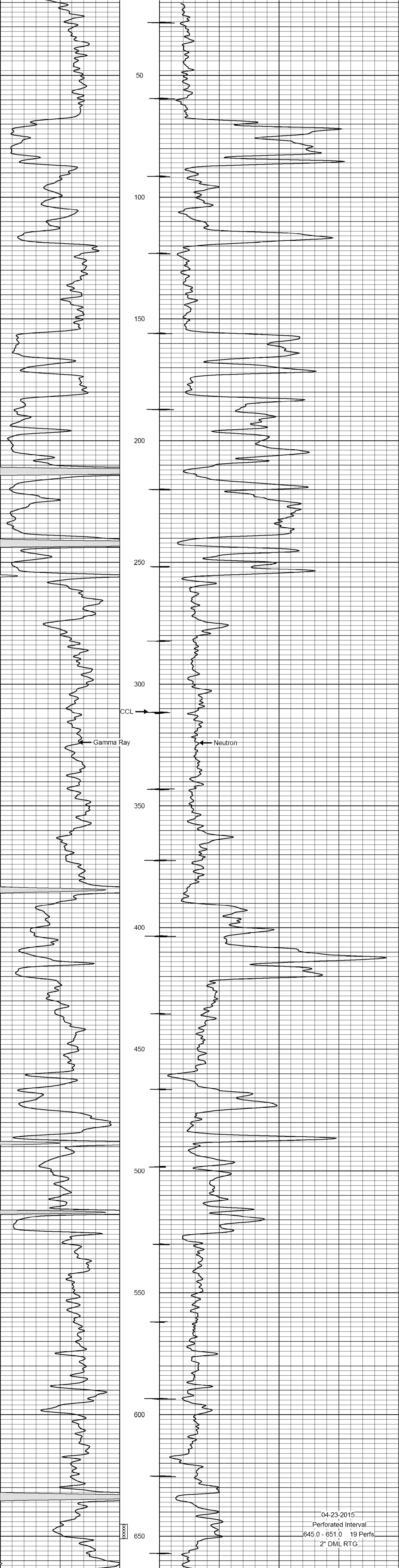
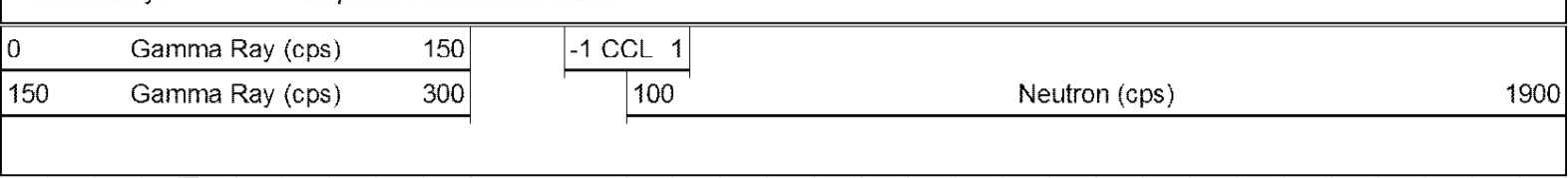
<<< Fold Here >>>

All interpretations are opinions based on inferences from electrical or other measurements and we cannot and do not guarantee the accuracy or correctness of any interpretation, and we shall not, except in the case of gross or willful negligence on our part, be liable or responsible for any loss, costs, damages, or expenses incurred or sustained by anyone resulting from any interpretation made by any of our officers, agents or employees. These interpretations are also subject to our general terms and conditions set out in our current Price Schedule.

Comments

Drilling Contractor :
 JTC Oil, Inc.

Database File: chase 10p.db
 Dataset Pathname: pass1
 Presentation Format: gr-n-ccl
 Dataset Creation: Thu Mar 05 12:39:44 2015 by Log SCH 111116
 Charted by: Depth in Feet scaled 1:240



04-23-2015
 Perforated Interval
 645.0 - 651.0 19 Perfs
 2" DML RTG

