



MIDWEST SURVEYS

LOGGING - PERFORATING - CONSULTING SERVICES
 P.O. Box 68, Osawatomie, KS 66064
 913.755-2128

GAMMA RAY / NEUTRON / CCL

File No.

API# 15-059-26,891

Company **Haas Petroleum, LLC.**
 Well **East Lidikay No. 3i-HP**
 Field **Paola / Rantoul**
 County **Franklin** State **Kansas**

Location **2320' FSL & 1700' FEL
 SW-SE-NW-SE**
 Sec. **4** Twp. **16S** Rge. **21E**
 Permanent Datum **GL** Elevation **1014'**
 Log Measured From **GL**
 Drilling Measured From **GL**
 Other Services **Perforate**
 Elevation **K.B. NA
 D.F. NA
 G.L. 1014'**

Date	04-07-2015		
Run Number	One		
Depth Driller	765.0		
Depth Logger	754.9		
Bottom Logged Interval	753.9		
Top Log Interval	20.0		
Fluid Level	Full		
Type Fluid	Water		
Density / Viscosity	NA		
Salinity - PPM Cl	NA		
Max Recorded Temp	NA		
Estimated Cement Top	0.0		
Equipment No.	Location	107 Osawatomie	
Recorded By	Steve Windisch		
Witnessed By	John Haas		
RUN	BORE-HOLE RECORD		CASING RECORD
	BIT	FROM	TO
	NO.	FROM	TO
One	9.875"	0.0	20.0
Two	5.625"	20.0	765.0
	SIZE	WGT.	FROM
			TO
	7.00"	17.0 #	0.0
	2.875"	6.5 #	0.0
			757.0

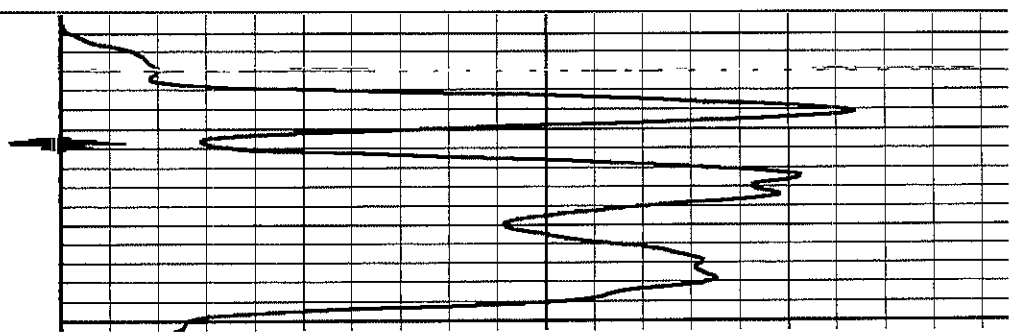
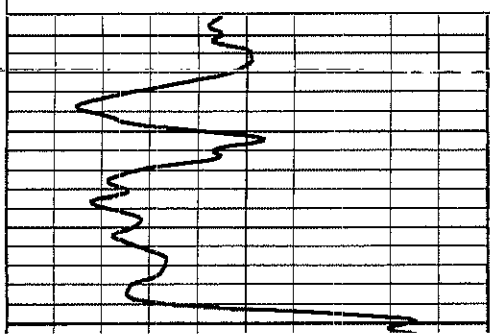
--- Fold Here ---

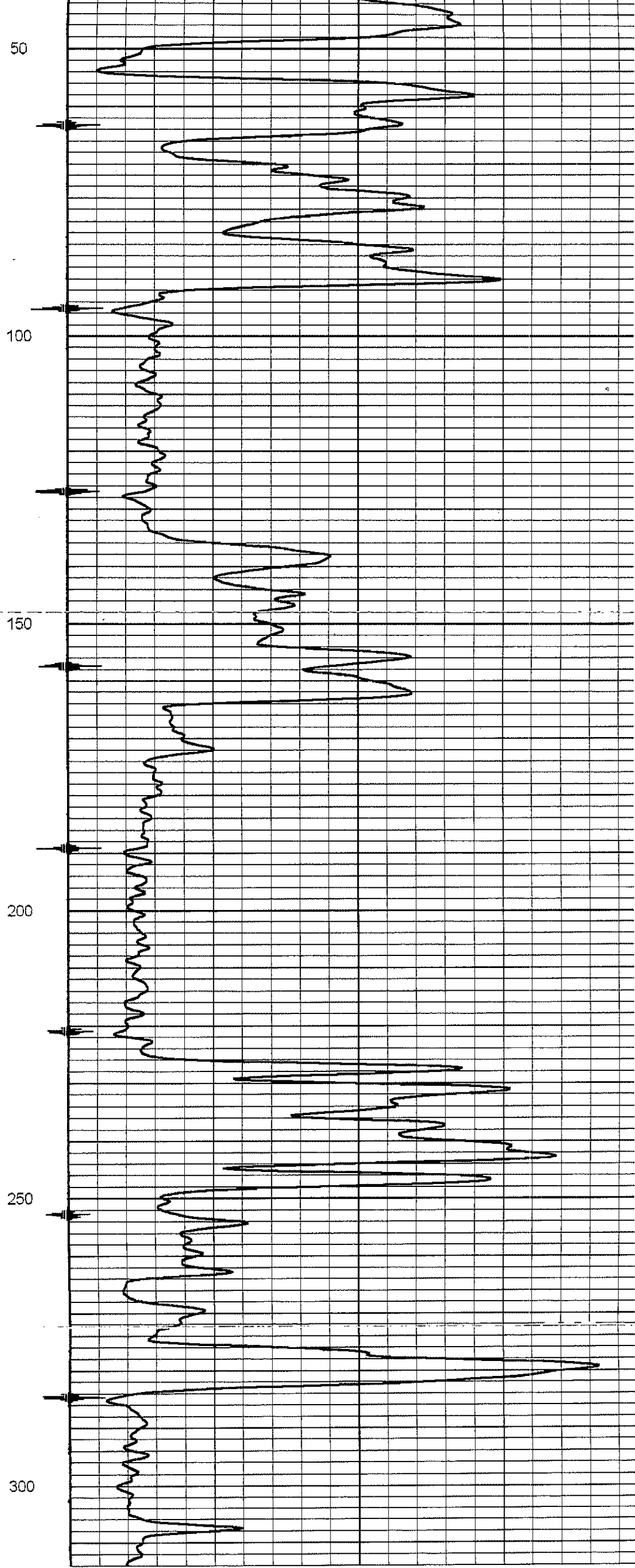
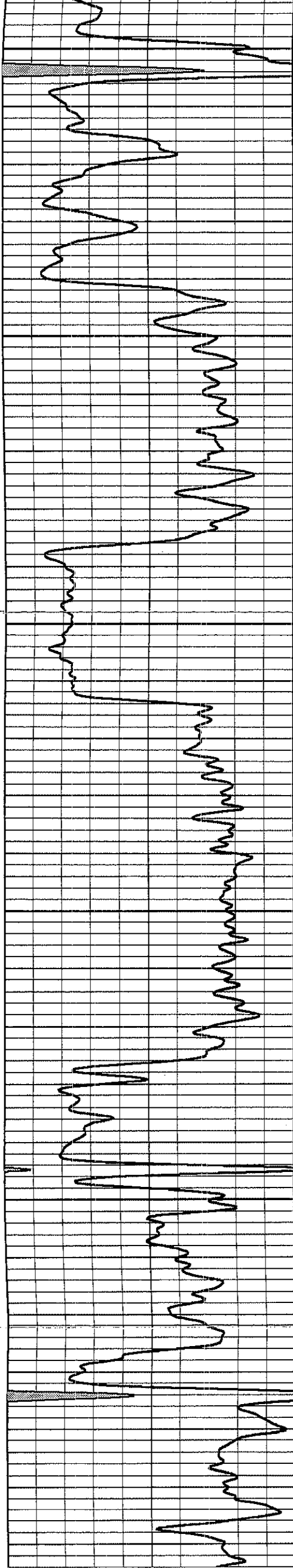
All interpretations are opinions based on inferences from electrical or other measurements and we cannot and do not guarantee the accuracy or correctness of any interpretation, and we shall not, except in the case of gross or willful negligence on our part, be liable or responsible for any loss, cost damages, or expenses incurred or sustained by anyone resulting from any interpretation made by any of our officers, agents or employees. These interpretations are also subject to our general terms and conditions set out in our current Price Schedule.

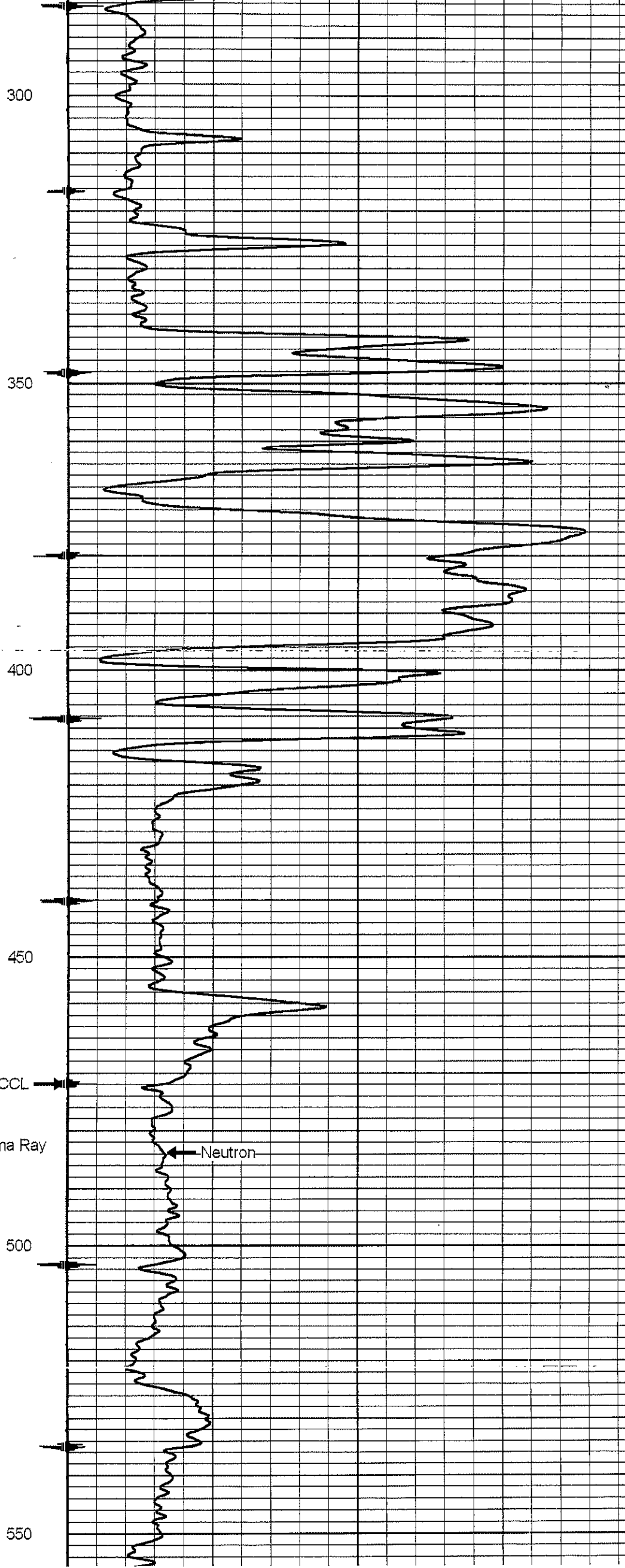
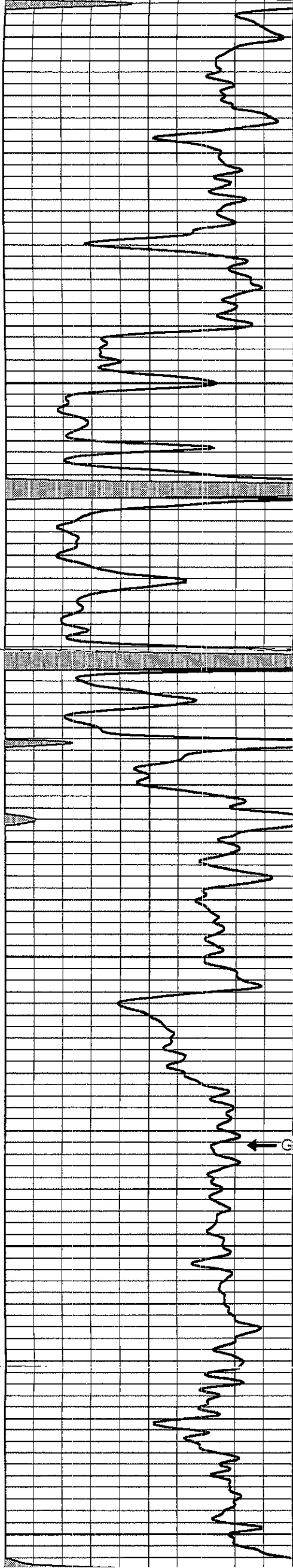
Comments

Drilling Contractor :
 Skyy Drilling, LLC.
 Rig #6

Database File: lidikay 3ihpe.db
 Dataset Pathname: pass1
 Presentation Format: gr-n-col
 Dataset Creation: Tue Apr 07 10:10:12 2015 by Log SCH 111116
 Charted by: Depth in Feet scaled 1:240



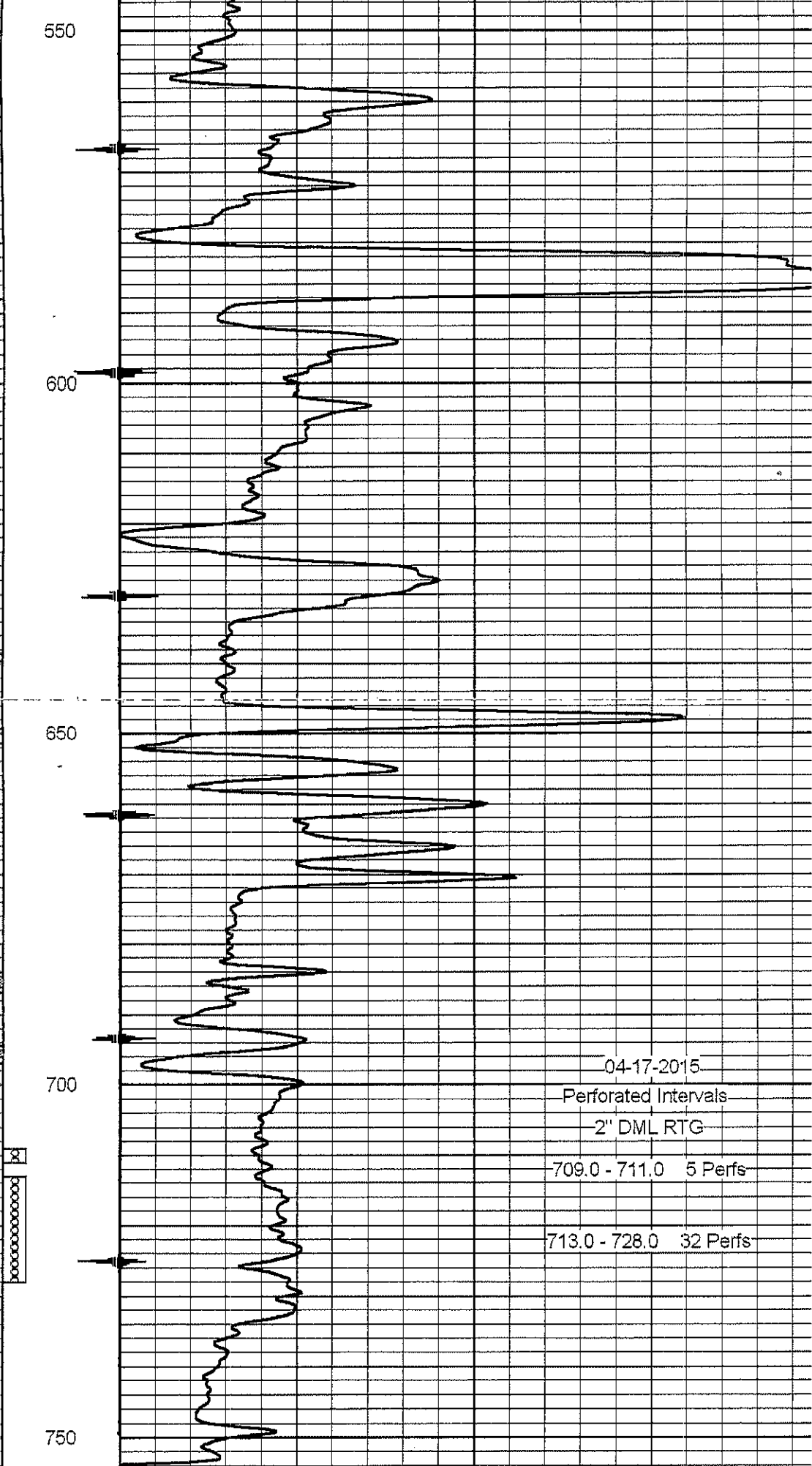
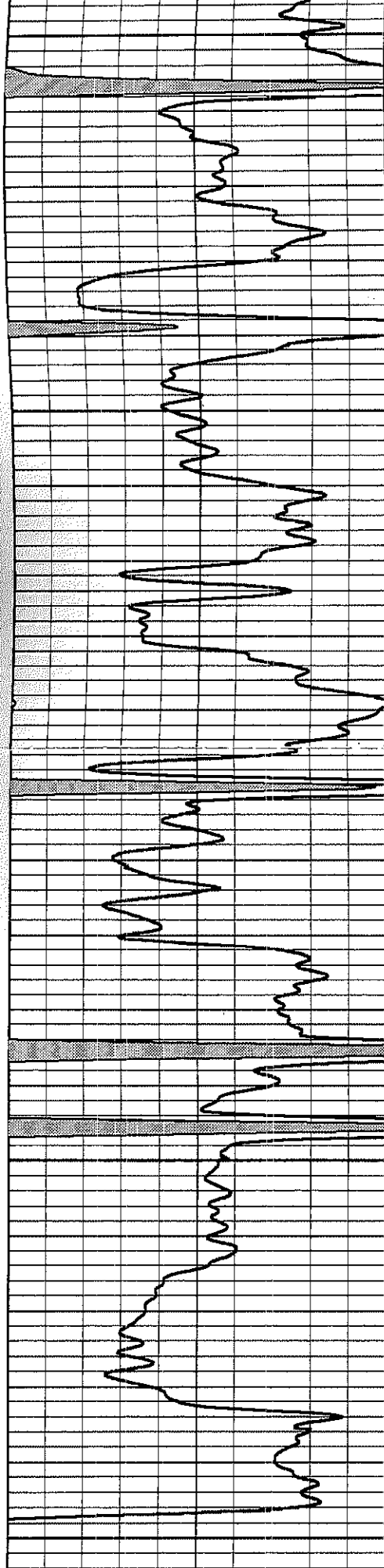




CCL

Gamma Ray

Neutron



04-17-2015
 Perforated Intervals
 2" DML RTG
 709.0 - 711.0 5 Perfs
 713.0 - 728.0 32 Perfs

0	Gamma Ray (cps)	150
150	Gamma Ray (cps)	300

-1 CCL 1
 10

Neutron (cps) 210