



**COMPLETION
& PRODUCTION
SERVICES CO.**

**COMPENSATED
DENSITY / NEUTRON
PE LOG**

Company RED OAK ENERGY, INC.
Well WALKER #1-25
Field WILDCAT
County WICHITA
State KANSAS

Company RED OAK ENERGY, INC.
Well WALKER #1-25
Field WILDCAT
County WICHITA State KANSAS

Location: API # : 15-203-20303-0000
415' FSL & 1720' FEL
NW - SE - SW - SE
SEC 25 TWP 16S RGE 35W
Permanent Datum GROUND LEVEL Elevation 3171
Log Measured From KELLY BUSHING 5' A.G.L.
Drilling Measured From KELLY BUSHING
Other Services
DIL/MEL
SONIC
Elevation
K.B. 3176
D.F. 3174
G.L. 3171

Date	4/3/15		
Run Number	ONE		
Depth Driller	4912		
Depth Logger	4912		
Bottom Logged Interval	4888		
Top Log Interval	3700		
Casing Driller	8 5/8" @ 265'		
Casing Logger	264		
Bit Size	7 7/8"		
Type Fluid in Hole	CHEMICAL MUD	CHLORIDES 7,000 PPM	
Density / Viscosity	9.3/55		
pH / Fluid Loss	10.0/9.6		
Source of Sample	FLOWLINE		
Rim @ Meas. Temp	.550 @ 72F		
Rmf @ Meas. Temp	.413 @ 72F		
Rmc @ Meas. Temp	.660 @ 72F		
Source of Rmf / Rmc	MEASUREMENT		
Rim @ BHT	.319 @ 124F		
Time Circulation Stopped	2.5 HOURS		
Time Logger on Bottom	12:45 P.M.		
Maximum Recorded Temperature	124F		
Equipment Number	4854		
Location	HAYS, KANSAS		
Recorded By	JEFF LUEBBERS		
Witnessed By	SEAN DEENIHAN		

<<< Fold Here >>>

All interpretations are opinions based on inferences from electrical or other measurements and we cannot and do not guarantee the accuracy or correctness of any interpretation, and we shall not, except in the case of gross or willful negligence on our part, be liable or responsible for any loss, costs, damages, or expenses incurred or sustained by anyone resulting from any interpretation made by any of our officers, agents or employees. These interpretations are also subject to our general terms and conditions set out in our current Price Schedule.

Comments

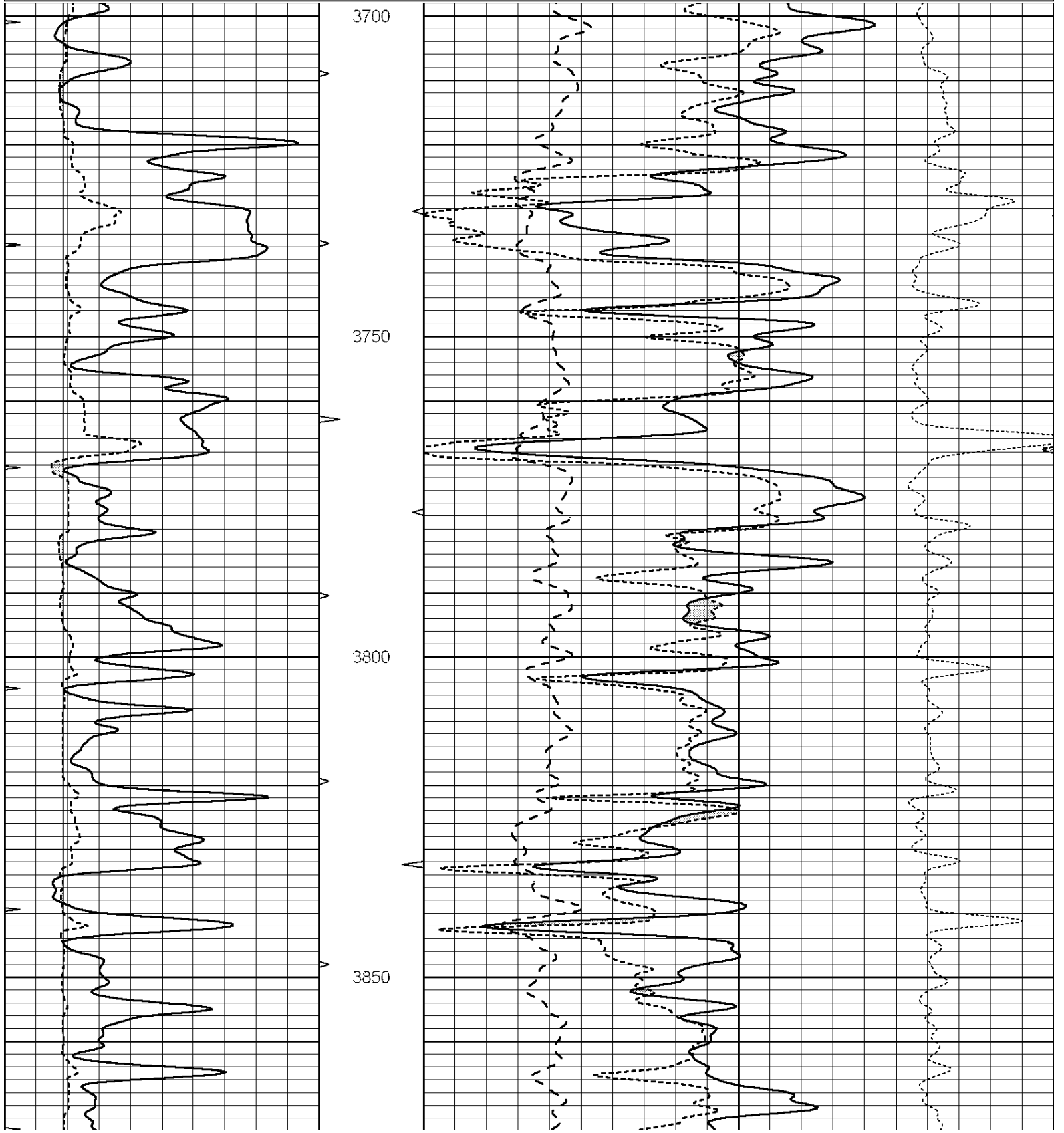
THANK YOU FOR USING "NABORS" HAYS, KANSAS (785) 628-6395
DIRECTIONS
PENCE, KS., W. TO (SCOTT / WICHITA COUNTY LINE), 1S., W. INTO

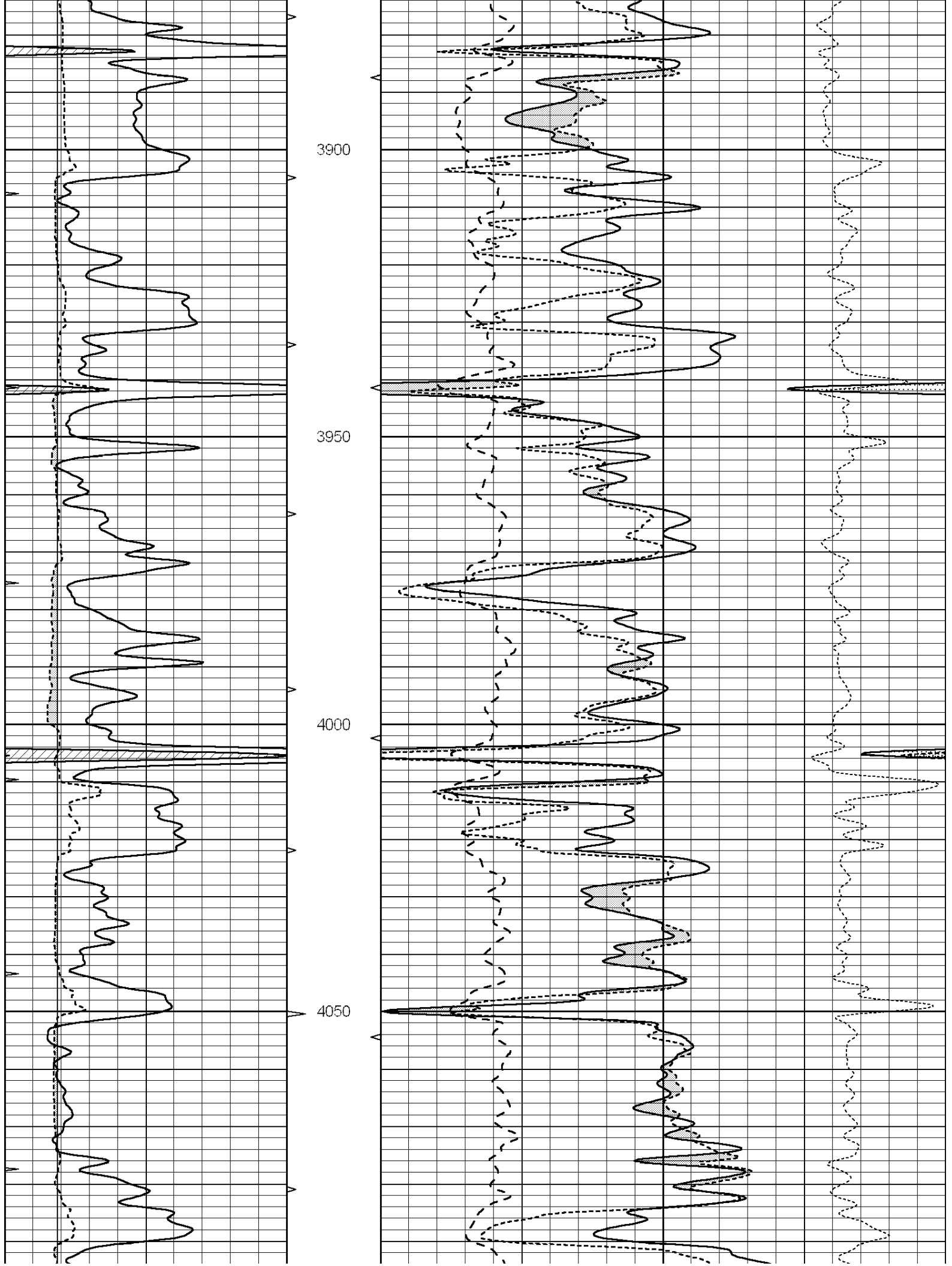


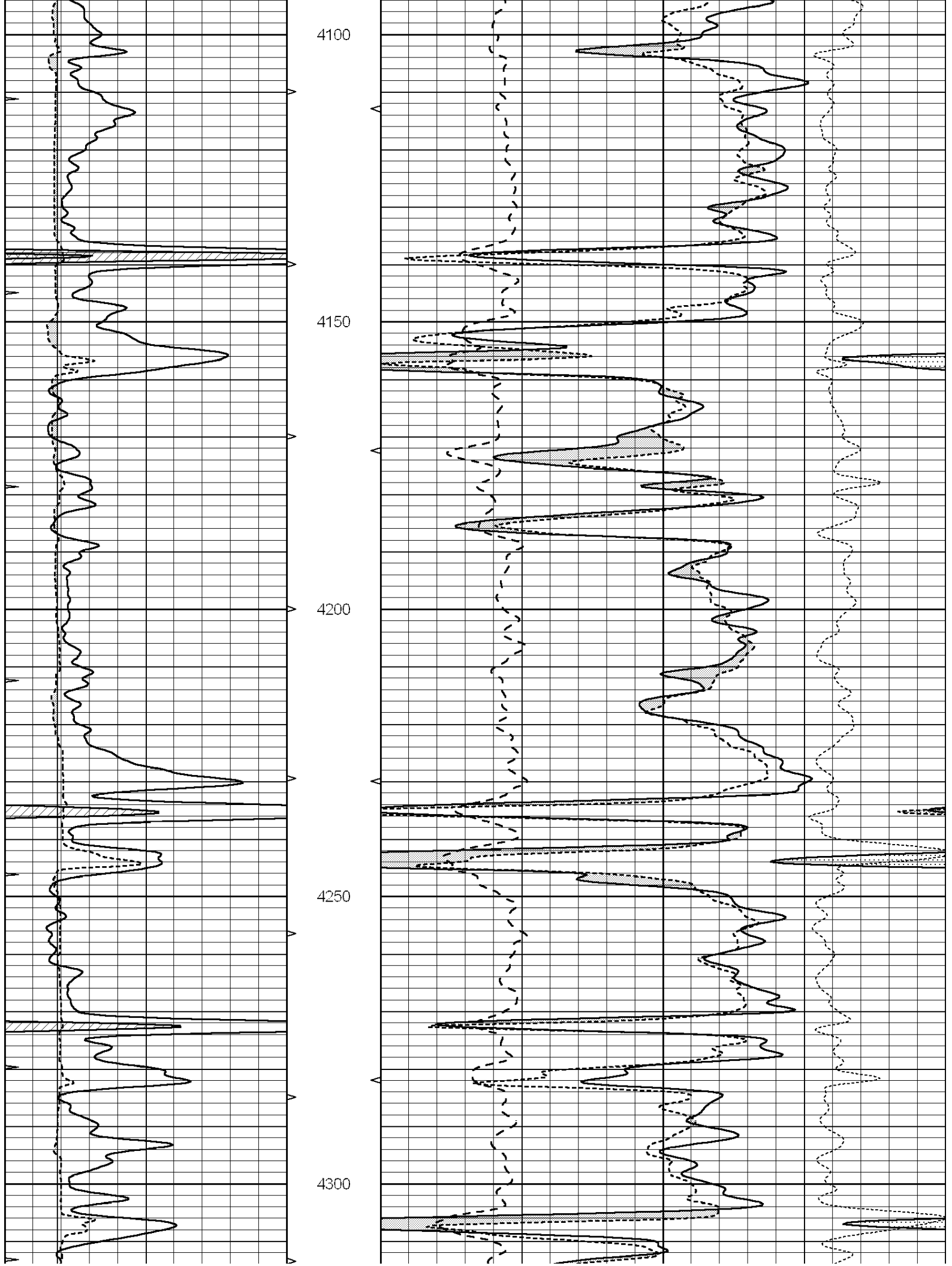
MAIN SECTION

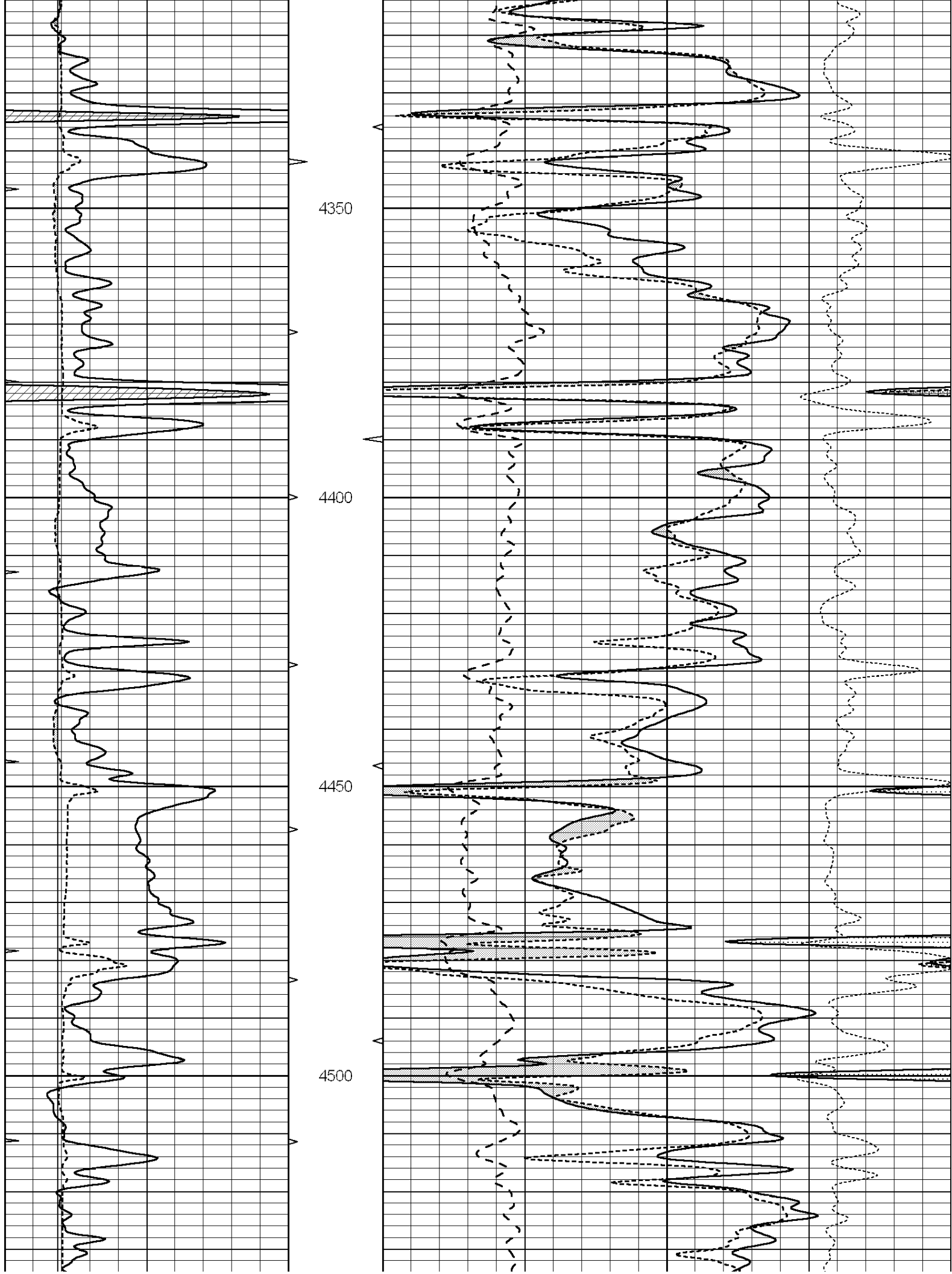
Database File: 26509pe.db
 Dataset Pathname: pass3.10
 Presentation Format: ldt_neu
 Dataset Creation: Fri Apr 03 14:27:21 2015
 Charted by: Depth in Feet scaled 1:240

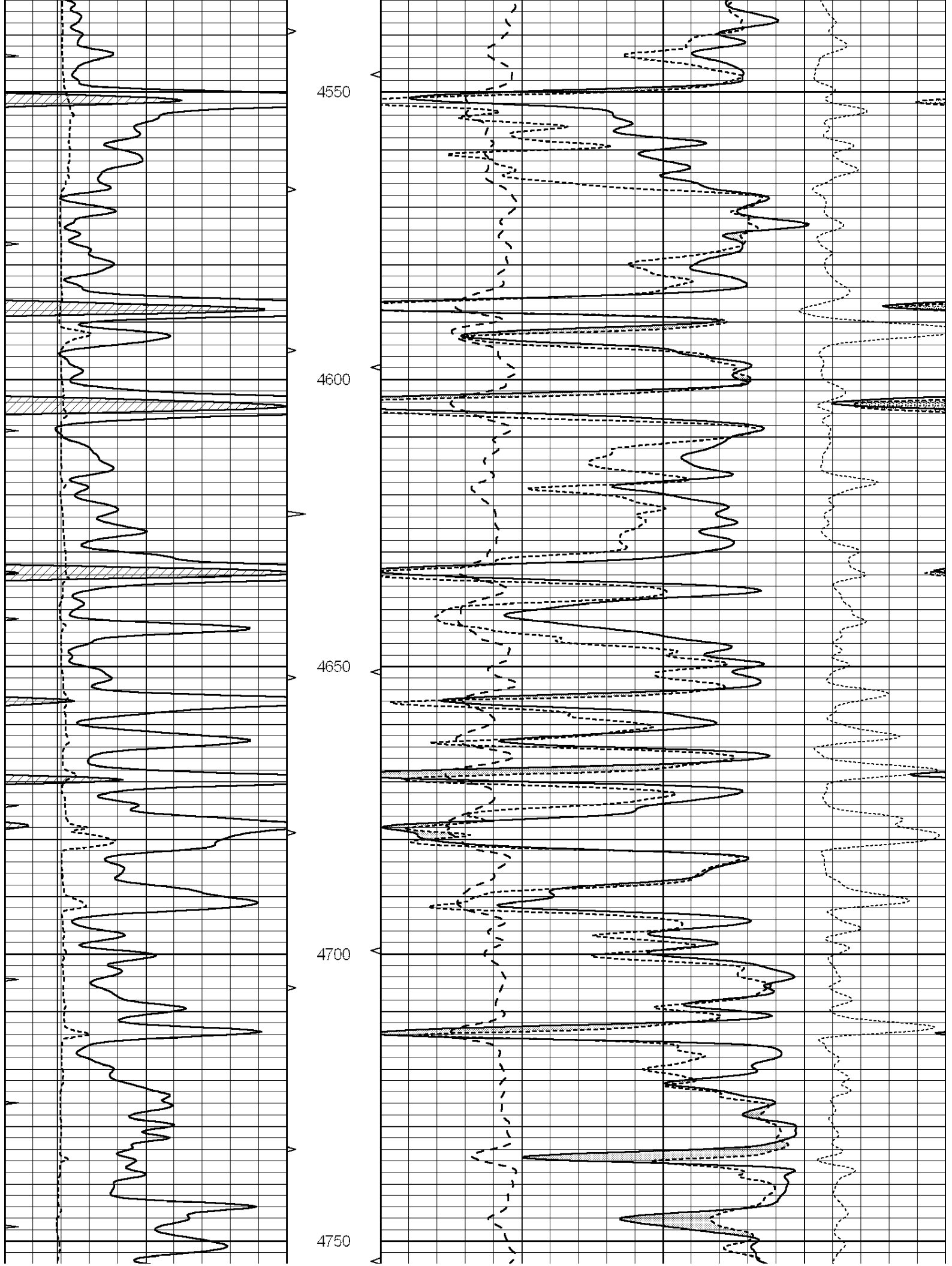
0	GAMMA RAY (GAPI)	150	ABHV	30	COMPENSATED DENSITY (pu)	-10
6	CALIPER (in)	16	10 (ft3)	0	COMPENSATED NEUTRON (pu)	-10
0	MINMK	20	TBHV	0	PE	10 -0.25 CORRECTION (g/cc) 0.25
			0 (ft3)	10		

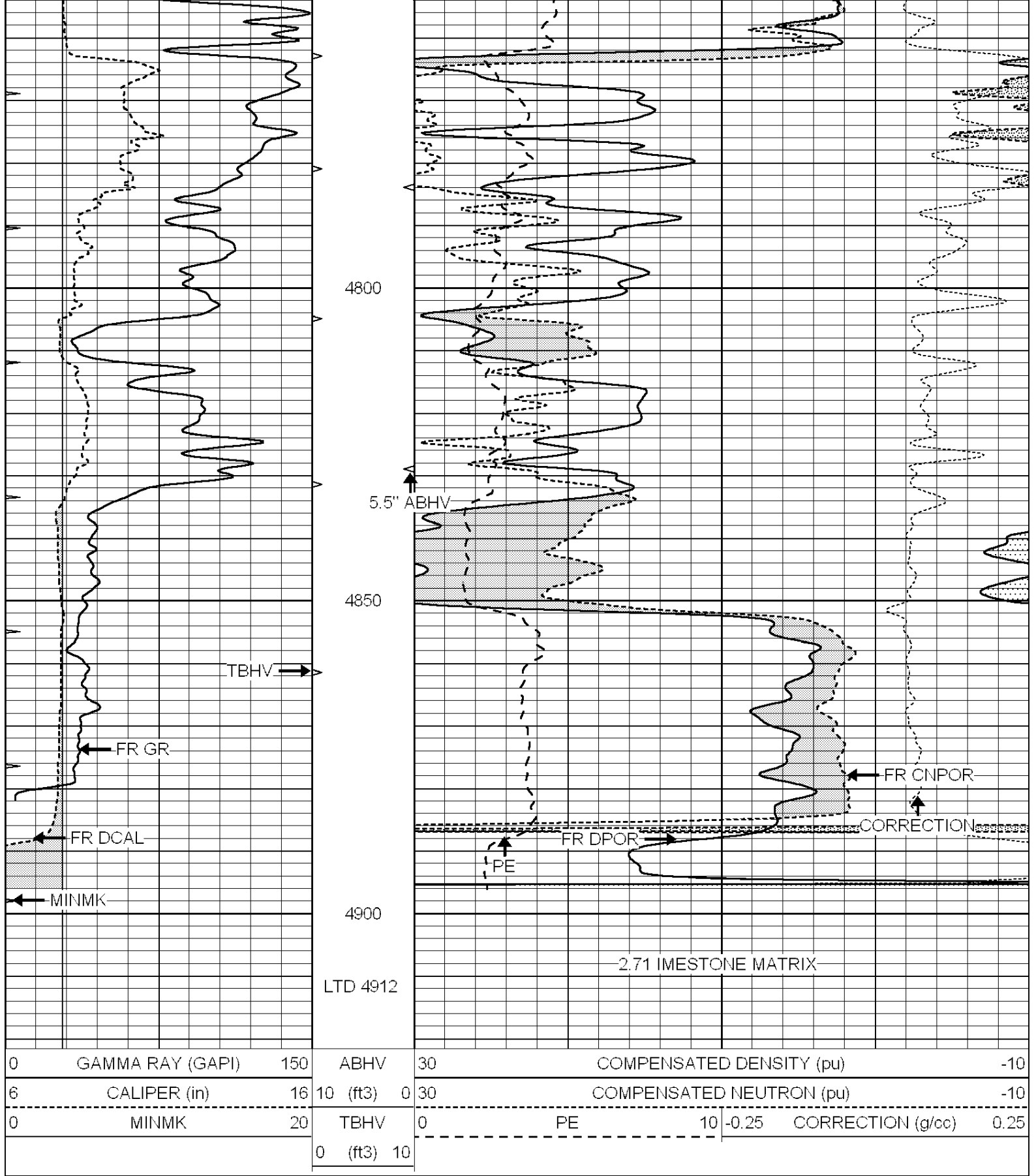






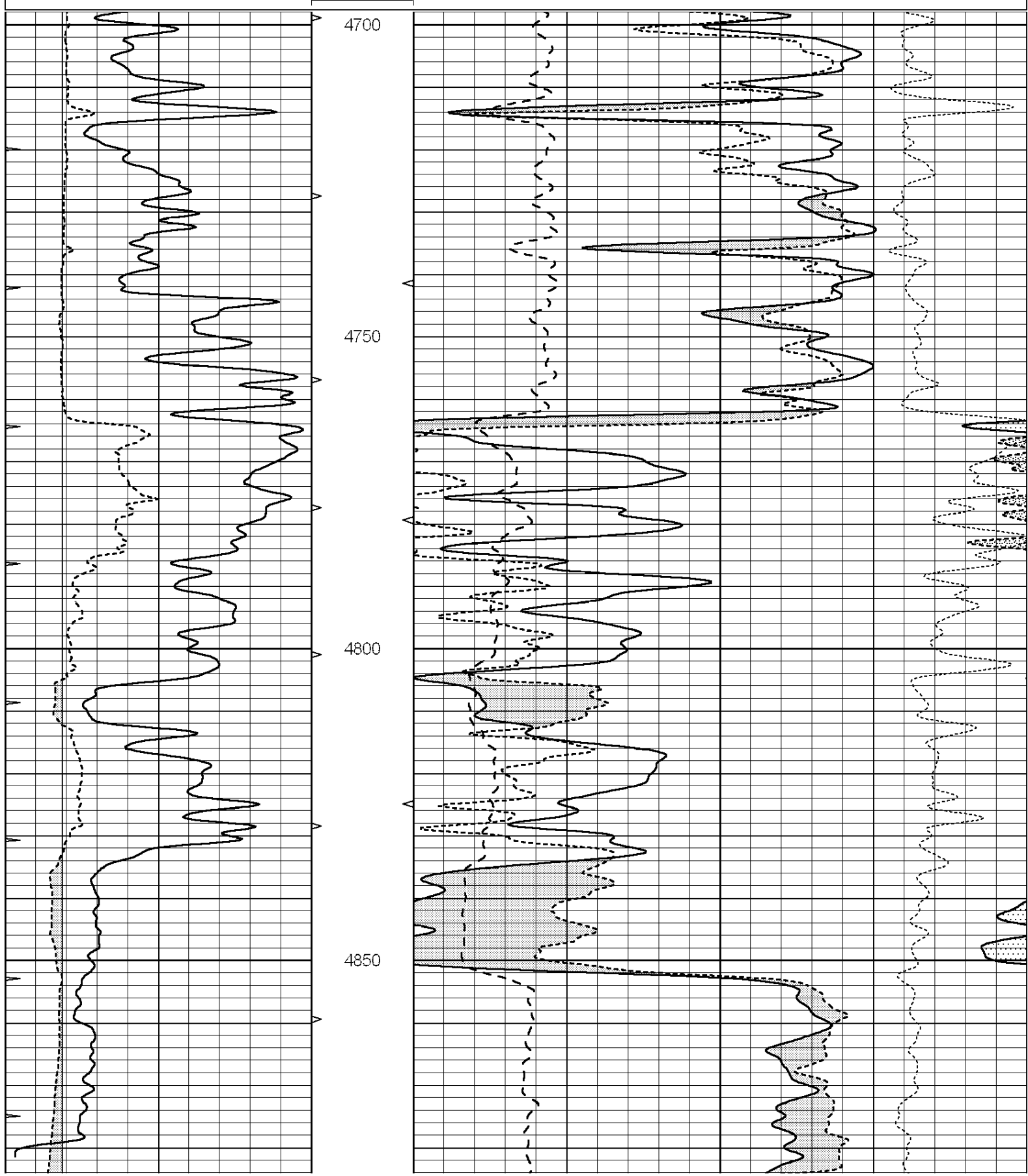


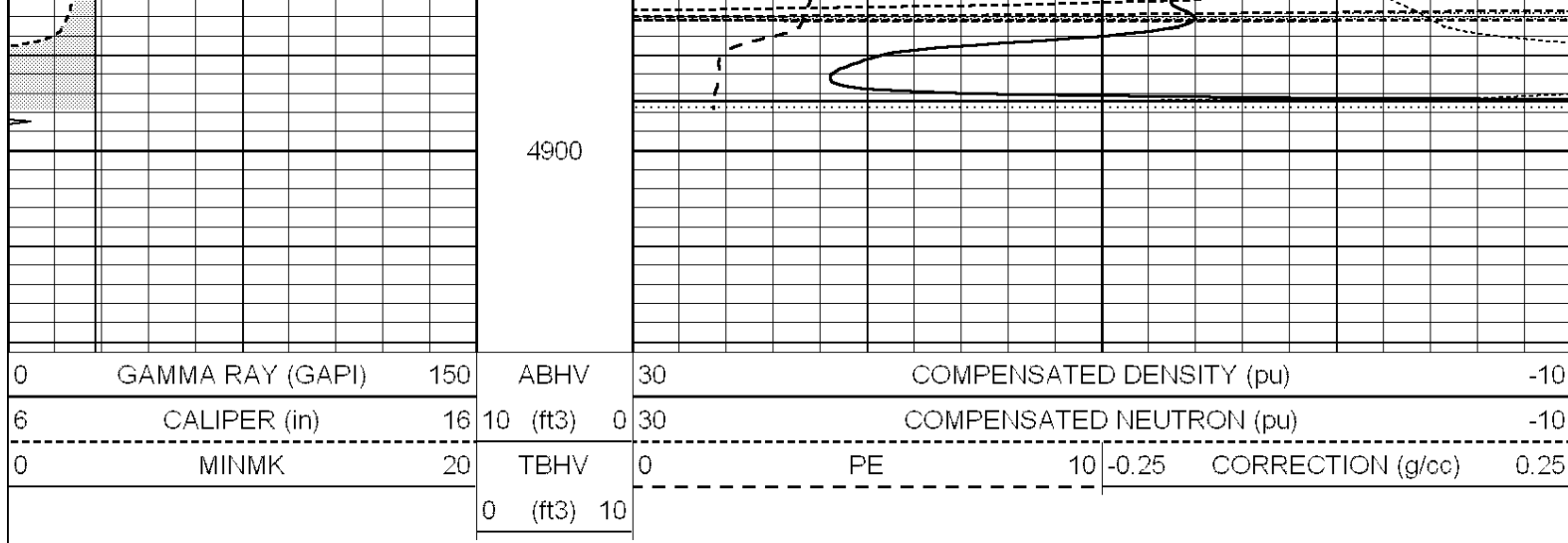




Dataset Pathname: pass2.v
 Presentation Format: ldt_neu
 Dataset Creation: Fri Apr 03 14:36:35 2015
 Charted by: Depth in Feet scaled 1:240

0	GAMMA RAY (GAPI)	150	ABHV	30	COMPENSATED DENSITY (pu)	-10
6	CALIPER (in)	16	10 (ft3)	0 30	COMPENSATED NEUTRON (pu)	-10
0	MINMK	20	TBHV	0	PE	10 -0.25
			0 (ft3)	10	CORRECTION (g/cc)	0.25





Calibration Report

Database File: 26509pe.db
 Dataset Pathname: pass3.10
 Dataset Creation: Fri Apr 03 14:27:21 2015

Dual Induction Calibration Report

Serial-Model: PROBE9-DILG
 Surface Cal Performed: Wed Apr 01 09:25:52 2015
 Downhole Cal Performed: Mon Jul 28 12:02:56 2008
 After Survey Verification Performed: Mon Jul 28 12:02:56 2008

Surface Calibration

Loop:	Readings			References			Results	
	Air	Loop		Air	Loop		m	b
Deep	-0.014	0.629	V	0.000	400.000	mmho/m	670.000	-14.000
Medium	0.039	0.728	V	0.000	464.000	mmho/m	670.000	-24.000
Internal:	Zero	Cal		Zero	Cal		m	b
Deep	0.011	0.610	V	0.000	400.000	mmho/m	667.135	-7.256
Medium	0.005	0.712	V	0.000	464.000	mmho/m	655.677	-3.102

Downhole Calibration

	Readings			References			Results	
	Zero	Cal		Zero	Cal		m'	b'
Deep	0.000	0.000	mmho/m	14.508	388.384	mmho/m	1.000	0.000
Medium	0.000	0.000	mmho/m	166.367	504.400	mmho/m	1.000	0.000
LL3		7.500	V		1400.000	Ohm-m		
		0.000	V		20.000	Ohm-m		
		-7.200	V		4000.000	mmho-m		

After Survey Verification

	Readings			Targets			Results	
	Zero	Cal		Zero	Cal		m'	b'
Deep	0.000	0.000	mmho/m	0.000	0.000	mmho/m	0.000	0.000
Medium	0.000	0.000	mmho/m	0.000	0.000	mmho/m	0.000	0.000
LL3		1.000	Ohm-m		1.000	Ohm-m		
		0.000	Ohm-m		0.000	Ohm-m		
		1.000	mmho-m		1.000	mmho-m		

Master Calibration

Performed Tue Sep 08 14:14:44 2009

	Background	Magnesium	Aluminum	Sandstone	
Window 1	2042.6	12312.8	4225.8	13758.4	cps
Window 2	1855.8	10134.7	3624.2	11113.1	cps
Window 3	1639.4	6760.2	2716.3	7260.3	cps
Window 4	466.4	469.2	466.1	476.5	cps
Long Space	0.0	8278.9	1768.4	9257.4	cps
Short Space	2.2	2377.3	1544.1	2574.2	cps
Rho		1.7100	2.5900	1.3800	g/cc
Pe		0.0000	2.5700	1.5500	
Rib Angle	: 44.4	Rib Slope	: 0.979	Density/Spine Ratio	: 0.549
Spine Angle	: 74.4	Spine Slope	: 3.577	Spine Intercept	: -18.8

Before Survey Verification

Performed Wed Dec 31 18:00:00 1969

Window 1	0.0	0.0	0.0	0.0	cps
Window 2	0.0	0.0	0.0	0.0	cps
Window 3	0.0	0.0	0.0	0.0	cps
Window 4	0.0	0.0	0.0	0.0	cps
Long Space	0.0	0.0	0.0	0.0	cps
Short Space	0.0	0.0	0.0	0.0	cps
Measured Rho		0.0000	0.0000	0.0000	g/cc
Measured Correction		0.0000	0.0000	0.0000	g/cc
Measured Pe			0.0000	0.0000	

After Survey Verification

Performed Wed Dec 31 18:00:00 1969

Window 1	0.0	0.0	0.0	0.0	cps
Window 2	0.0	0.0	0.0	0.0	cps
Window 3	0.0	0.0	0.0	0.0	cps
Window 4	0.0	0.0	0.0	0.0	cps
Long Space	0.0	0.0	0.0	0.0	cps
Short Space	0.0	0.0	0.0	0.0	cps
Measured Rho		0.0000	0.0000	0.0000	g/cc
Measured Correction		0.0000	0.0000	0.0000	g/cc
Measured Pe			0.0000	0.0000	

Compensated Neutron Calibration Report

Serial Number: 070808
Tool Model: Probe

PRE-SURVEY VERIFICATION

Detector	Readings	Measured	Target
Short Space	cps		
Long Space	cps	pu	pu

POST-SURVEY VERIFICATION

Detector	Readings	Measured	Target
Short Space	cps		
Long Space	cps	pu	pu

Gamma Ray Calibration Report

Serial Number: 070558
Tool Model: OPEN_GR
Performed: Sat Mar 21 17:40:37 2015

Calibrator Value:	1.0	GAPI
Background Reading:	0.0	cps
Calibrator Reading:	1.0	cps
Sensitivity:	0.2600	GAPI/cps