



**COMPLETION  
& PRODUCTION  
SERVICES CO.**

**DUAL INDUCTION  
LOG**

Company RED OAK ENERGY, INC.  
Well WALKER #1-25  
Field WILDCAT  
County WICHITA  
State KANSAS

Company RED OAK ENERGY, INC.  
Well WALKER #1-25  
Field WILDCAT  
County WICHITA State KANSAS

Location: API # : 15-203-20303-0000  
415' FSL & 1720' FEL  
NW - SE - SW - SE  
SEC 25 TWP 16S RGE 35W  
Permanent Datum GROUND LEVEL Elevation 3171  
Log Measured From KELLY BUSHING 5' A.G.L.  
Drilling Measured From KELLY BUSHING  
Other Services  
CDL/CNL/PE  
MEL/SONIC  
Elevation  
K.B. 3176  
D.F. 3174  
G.L. 3171

Date	4/3/15		
Run Number	ONE		
Depth Driller	4912		
Depth Logger	4912		
Bottom Logged Interval	4910		
Top Log Interval	00		
Casing Driller	8 5/8"@265'		
Casing Logger	264		
Bit Size	7 7/8"		
Type Fluid in Hole	CHEMICAL MUD	CHLORIDES 7,000 PPM	
Density / Viscosity	9.3/55		
pH / Fluid Loss	10.0/9.6		
Source of Sample	FLOWLINE		
Rim @ Meas. Temp	.550@72F		
Rmf @ Meas. Temp	.413@72F		
Rmc @ Meas. Temp	.660@72F		
Source of Rmf / Rmc	MEASUREMENT		
Rim @ BHT	.319@124F		
Time Circulation Stopped	2.5 HOURS		
Time Logger on Bottom	12:45 P.M.		
Maximum Recorded Temperature	124F		
Equipment Number	4854		
Location	HAYS, KANSAS		
Recorded By	JEFF LUEBBERS		
Witnessed By	SEAN DEENIHAN		

<<< Fold Here >>>

All interpretations are opinions based on inferences from electrical or other measurements and we cannot and do not guarantee the accuracy or correctness of any interpretation, and we shall not, except in the case of gross or willful negligence on our part, be liable or responsible for any loss, costs, damages, or expenses incurred or sustained by anyone resulting from any interpretation made by any of our officers, agents or employees. These interpretations are also subject to our general terms and conditions set out in our current Price Schedule.

**Comments**

THANK YOU FOR USING "NABORS" HAYS, KANSAS (785) 628-6395  
DIRECTIONS  
PENCE, KS., W. TO (SCOTT / WICHITA COUNTY LINE), 1S., W. INTO



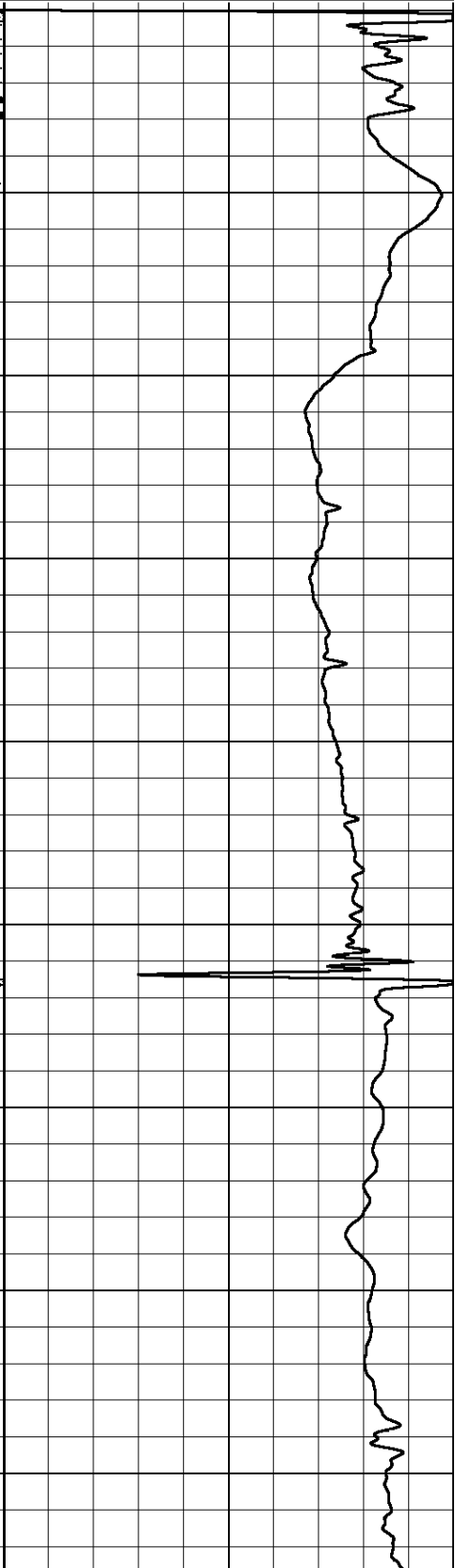
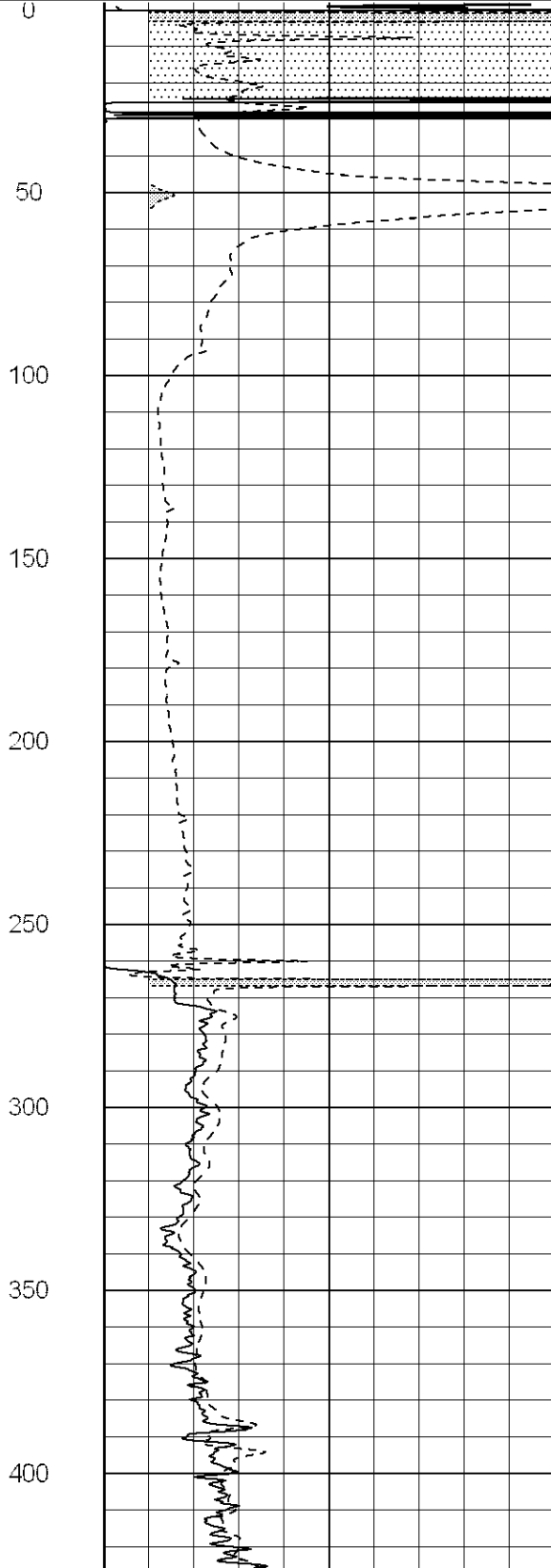
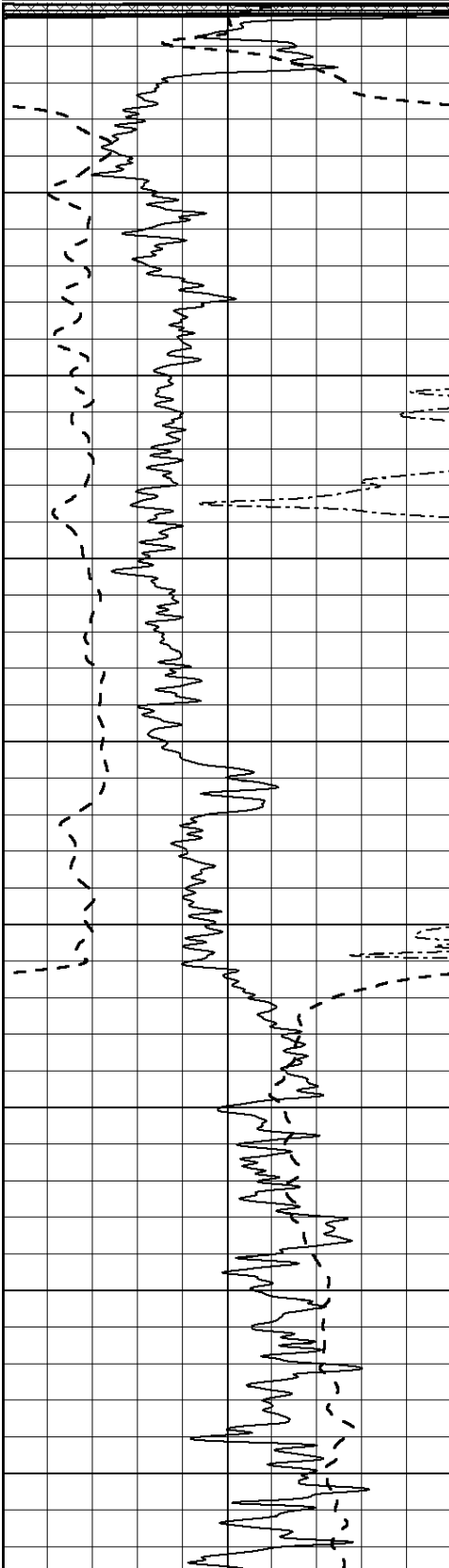
**MAIN SECTION**

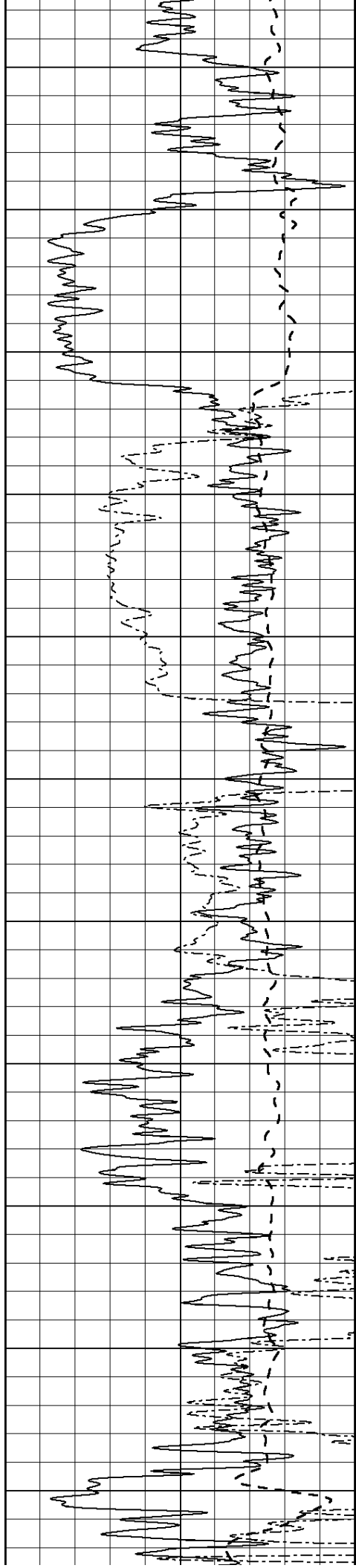
Database File: 26509pe.db  
 Dataset Pathname: pass3.10  
 Presentation Format: dil2  
 Dataset Creation: Fri Apr 03 14:27:21 2015  
 Charted by: Depth in Feet scaled 1:600

0	Gamma Ray (GAPI)	150
-100	SP (mV)	100
0	RWA (Ohm-m)	1

0	RLL3 (Ohm-m)	50
0	RILD (Ohm-m)	50
1000	CILD (mmho/m)	0

50	RILD X10 (Ohm-m)	500
50	RLL3 X10 (Ohm-m)	500





450

500

550

600

650

700

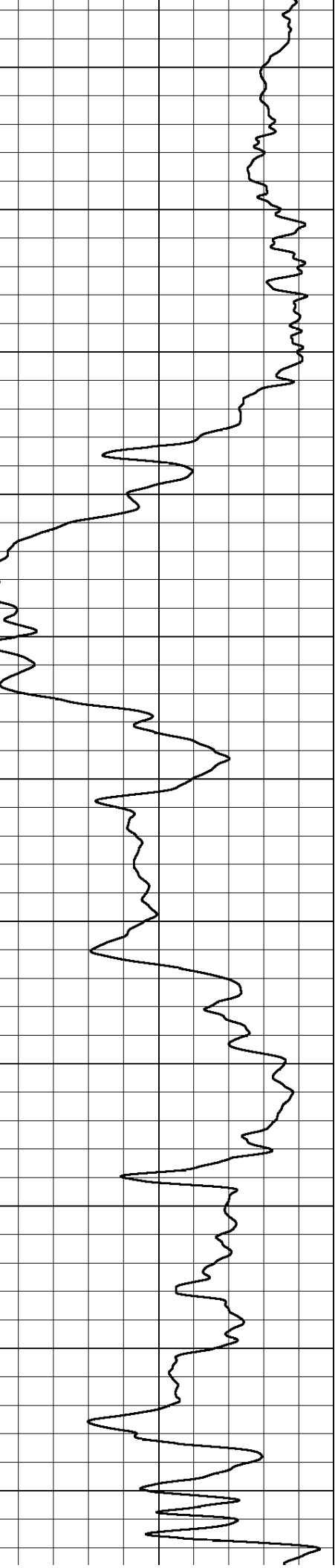
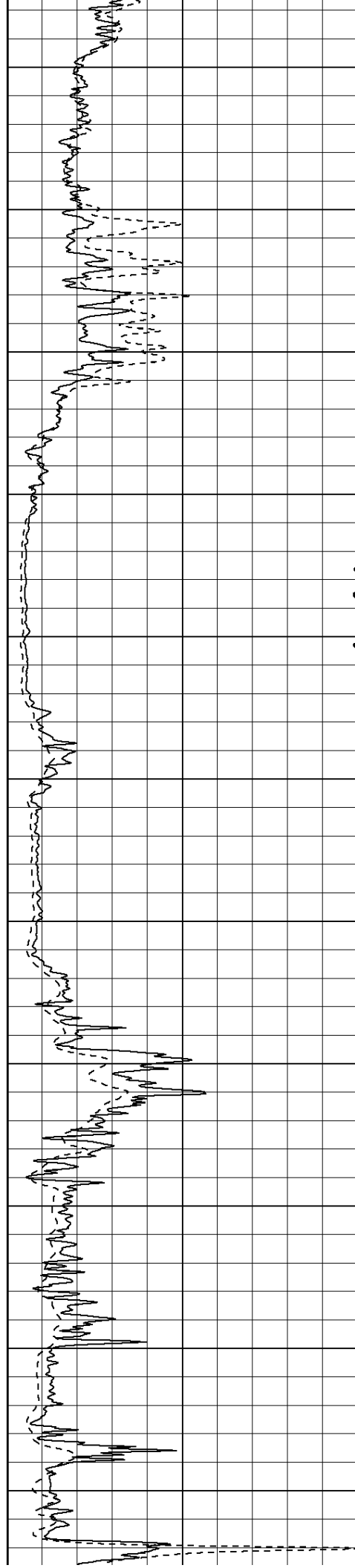
750

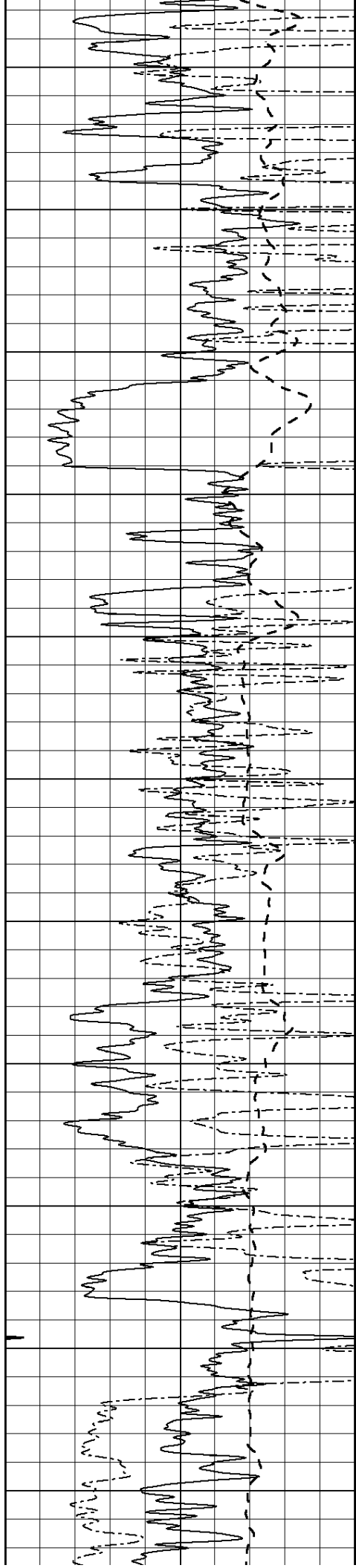
800

850

900

950





1000

1050

1100

1150

1200

1250

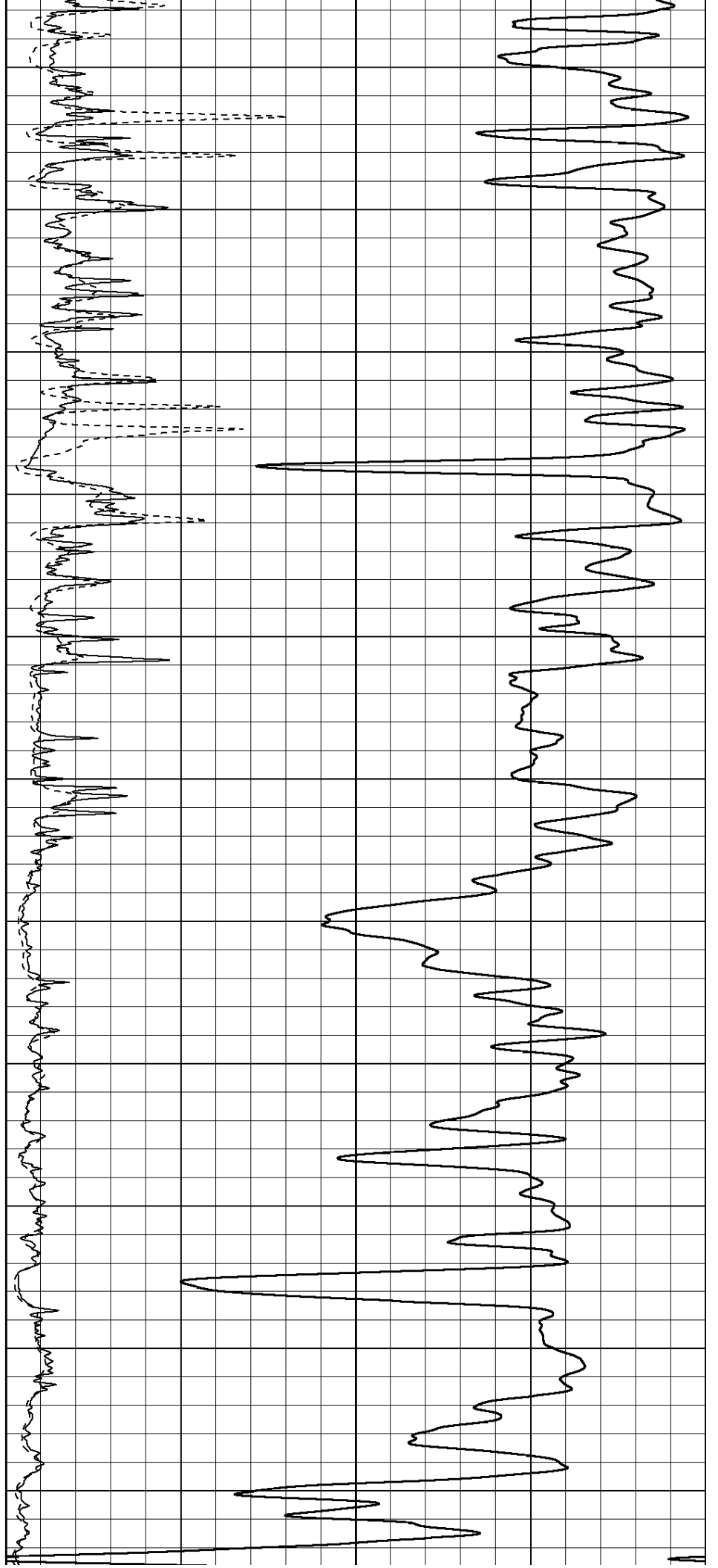
1300

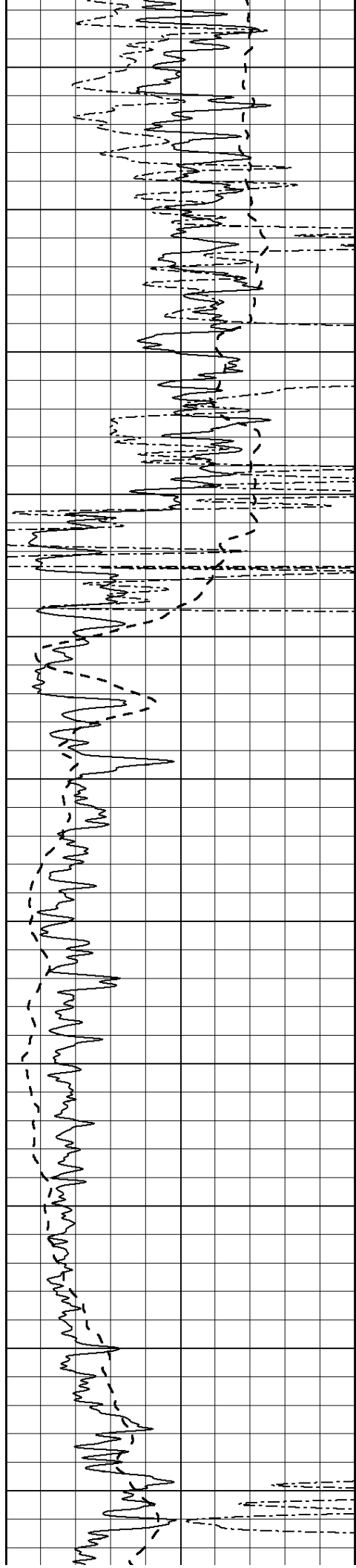
1350

1400

1450

1500





1550

1600

1650

1700

1750

1800

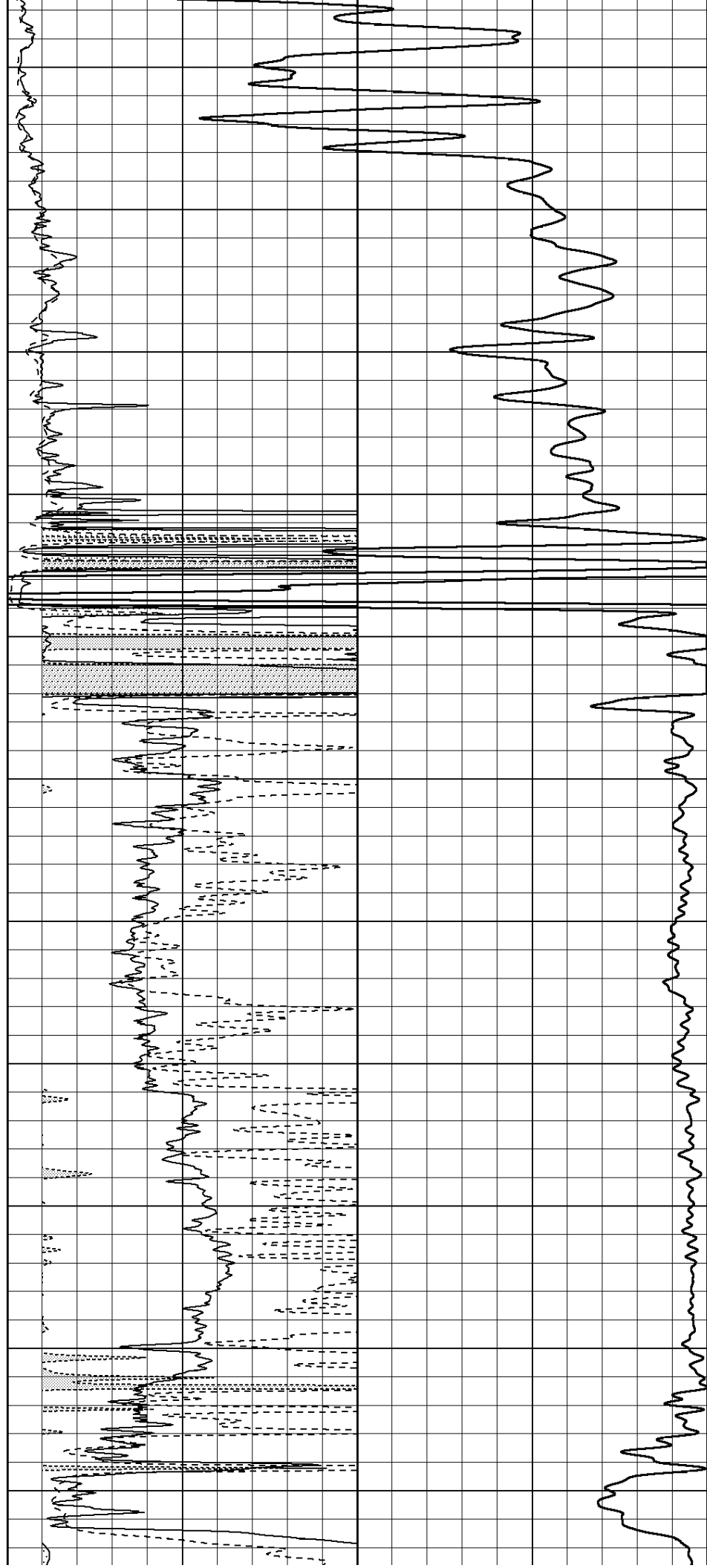
1850

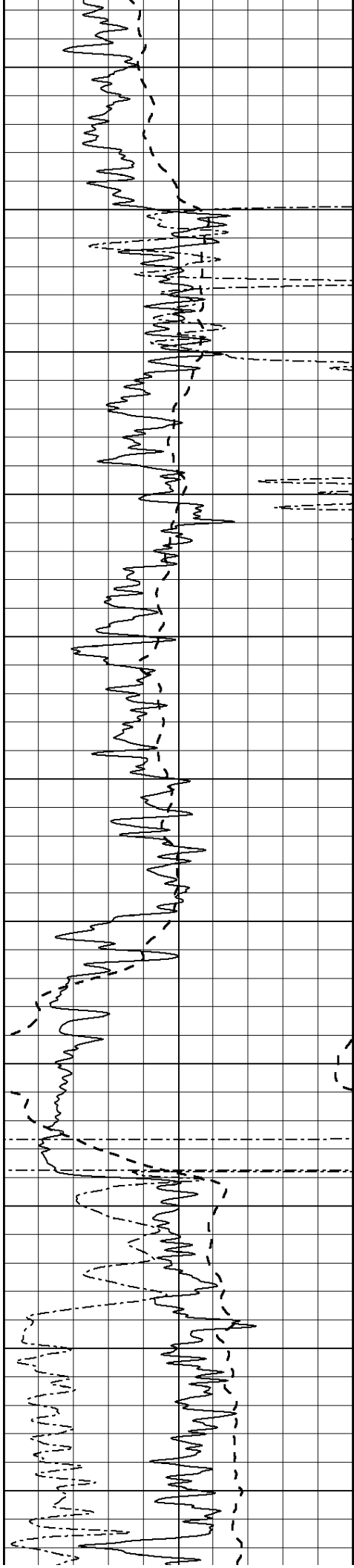
1900

1950

2000

2050





2100

2150

2200

2250

2300

2350

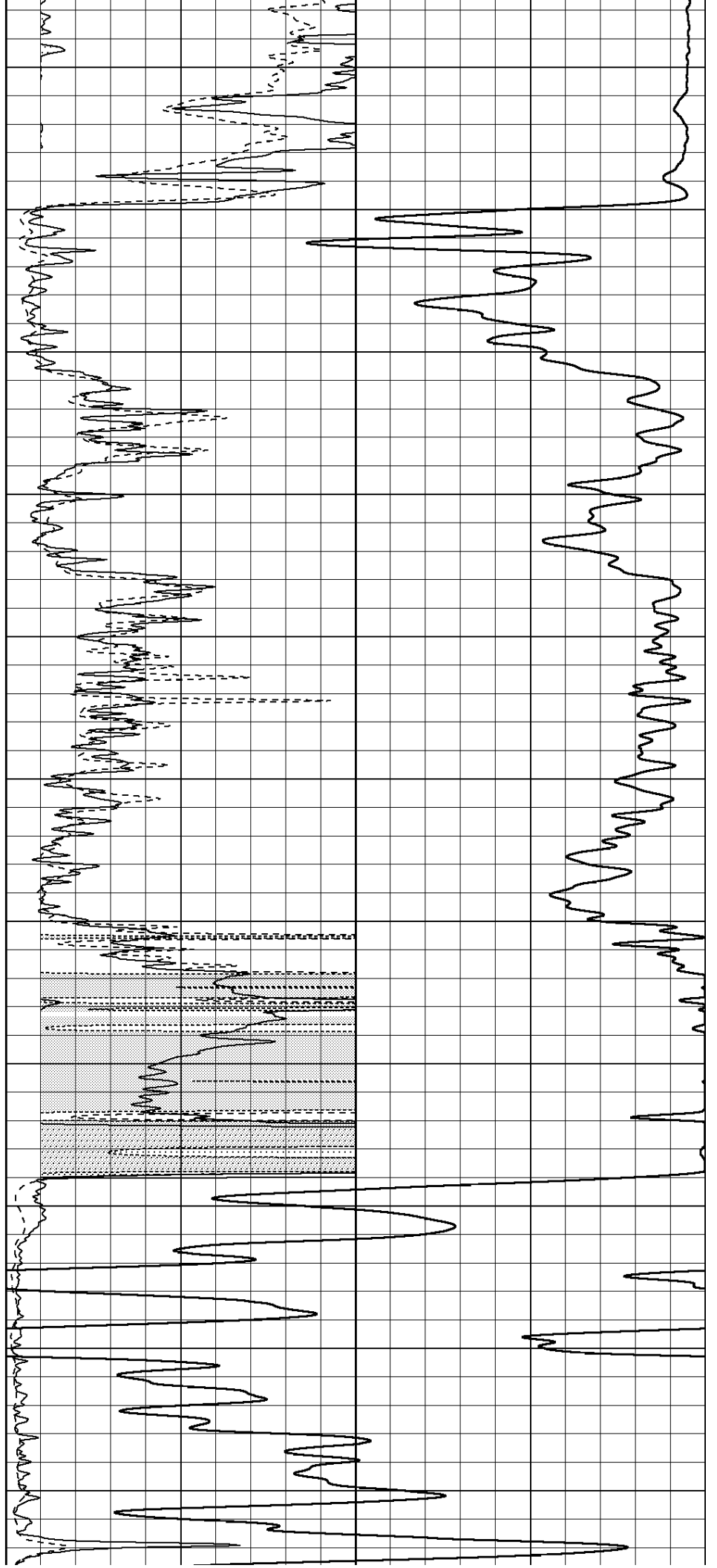
2400

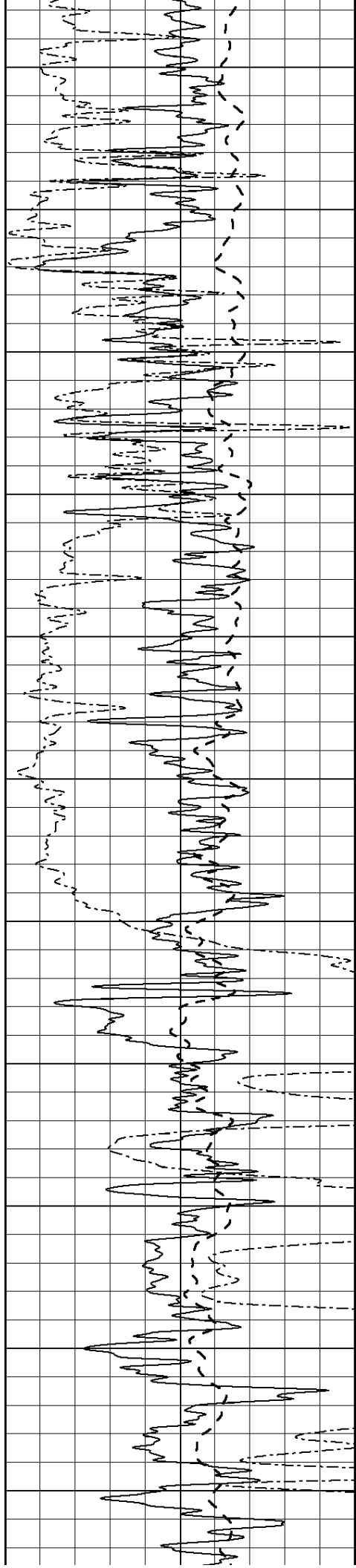
2450

2500

2550

2600





2650

2700

2750

2800

2850

2900

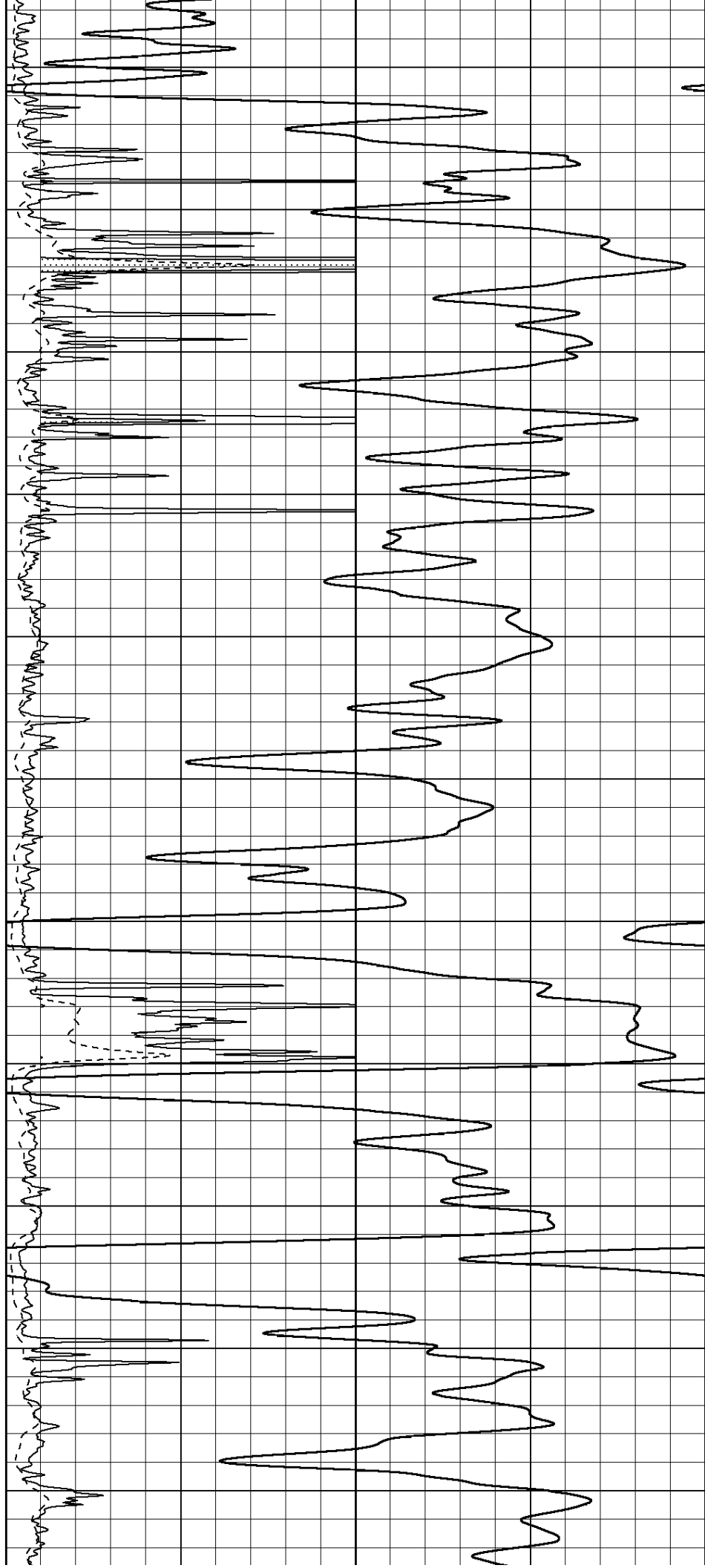
2950

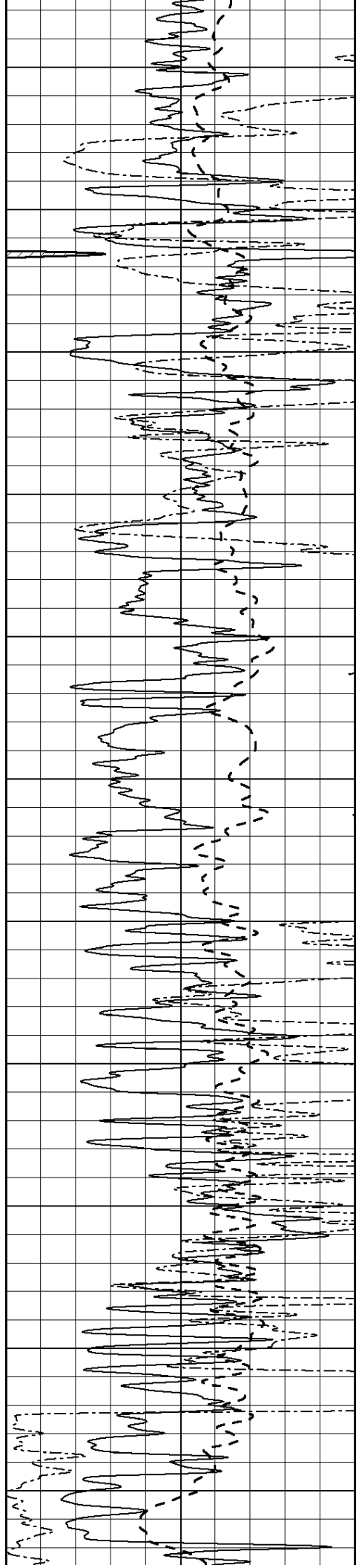
3000

3050

3100

3150





3200

3250

3300

3350

3400

3450

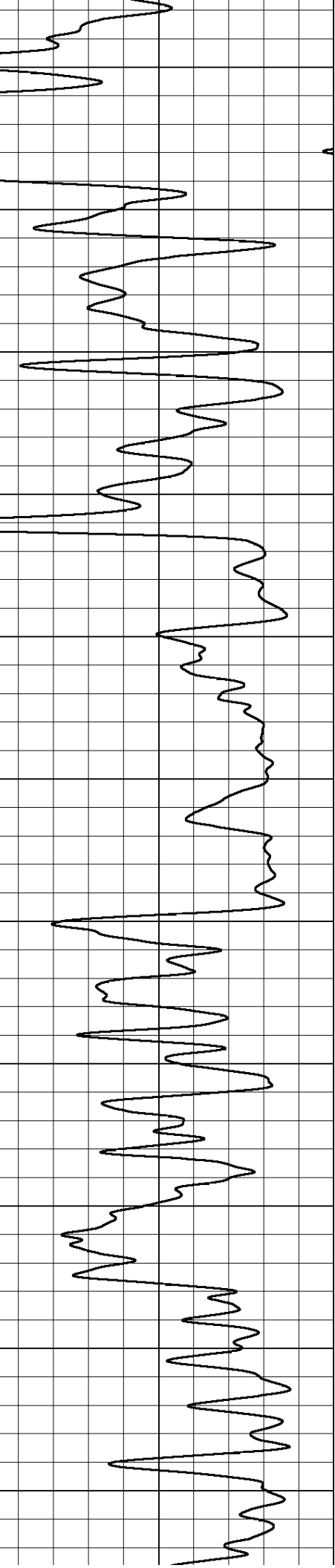
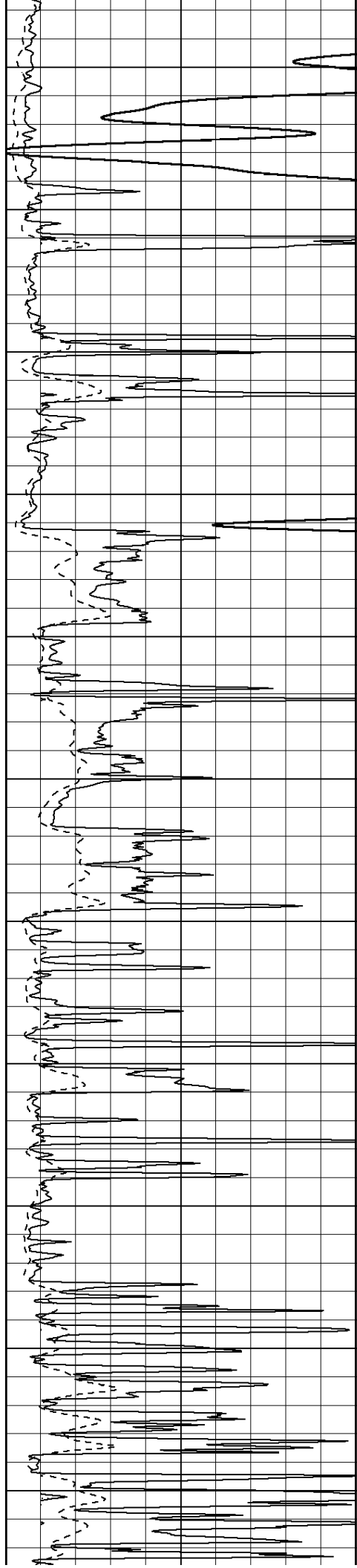
3500

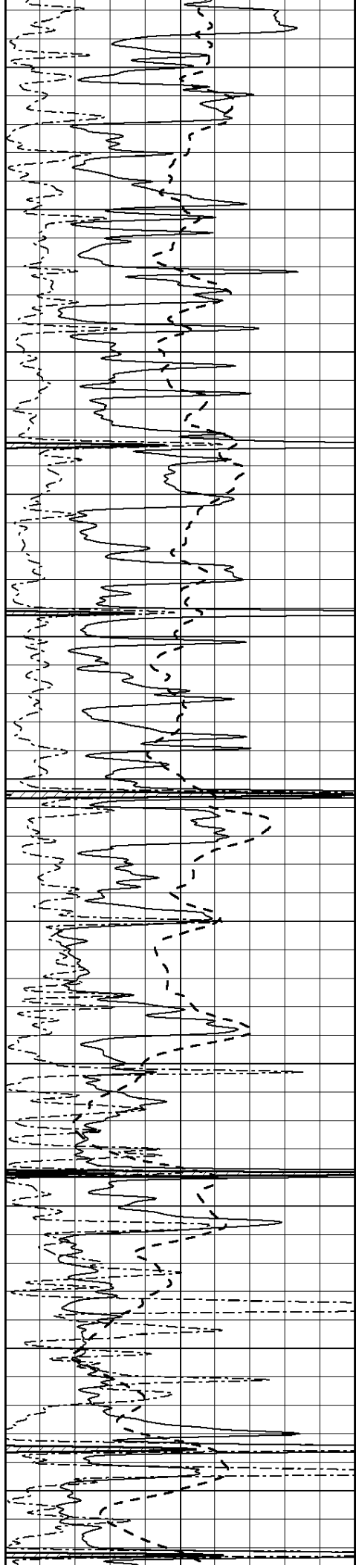
3550

3600

3650

3700





3750

3800

3850

3900

3950

4000

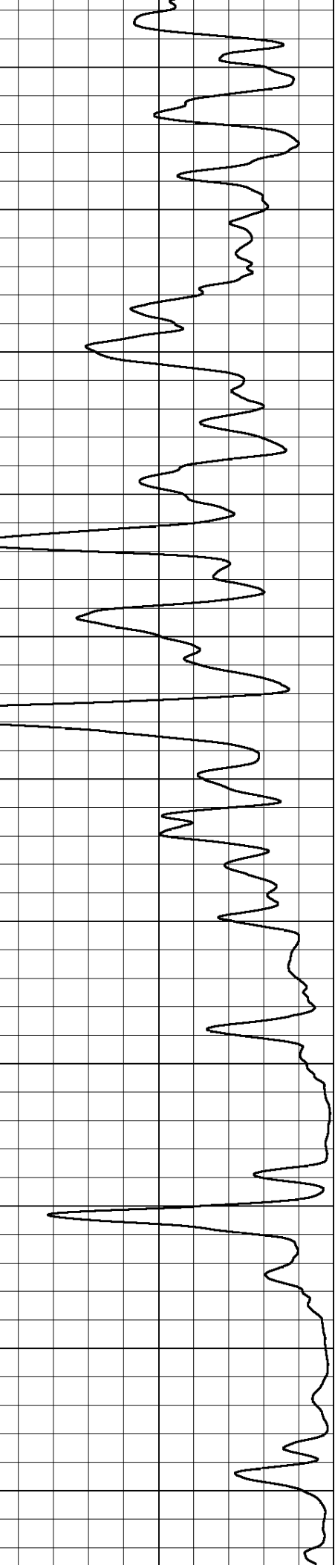
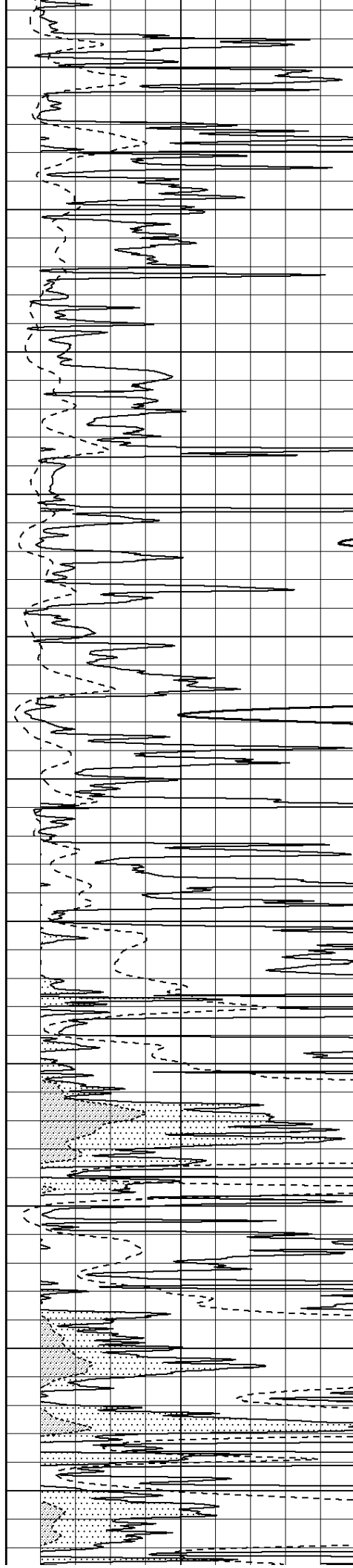
4050

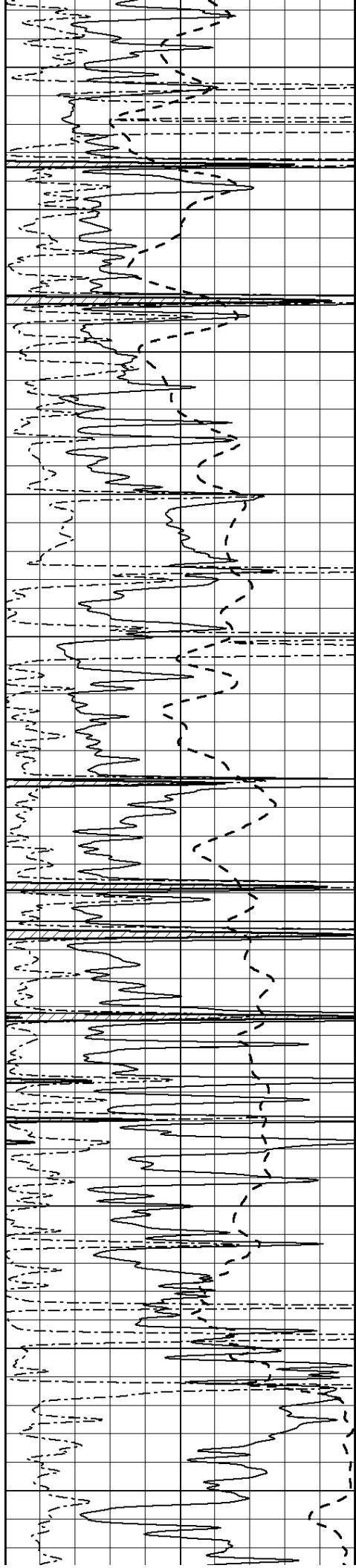
4100

4150

4200

4250





4300

4350

4400

4450

4500

4550

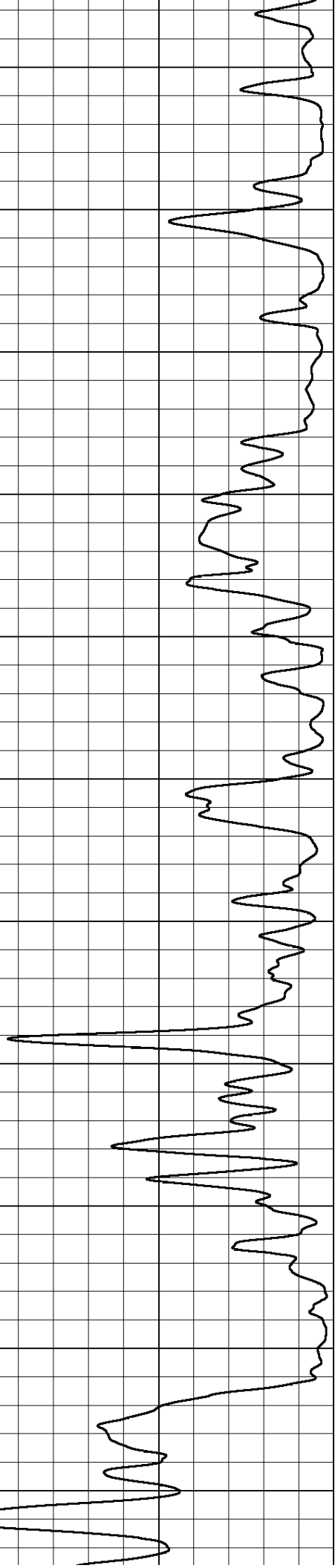
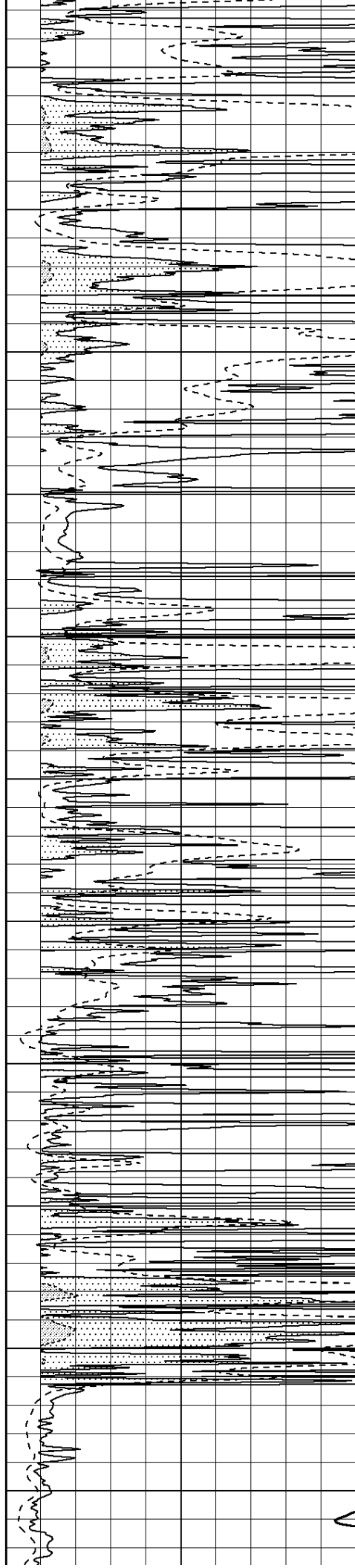
4600

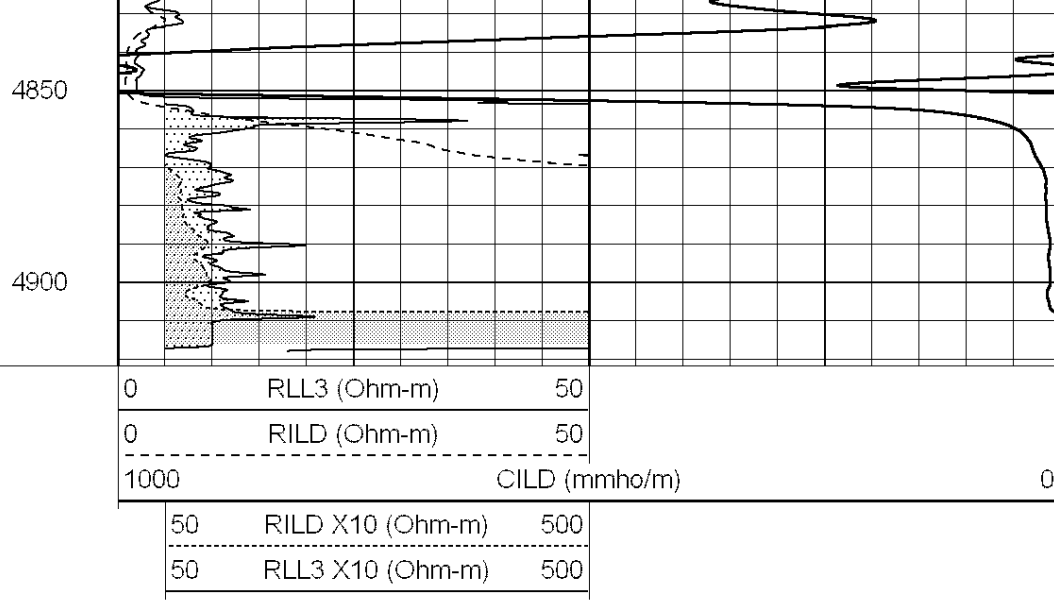
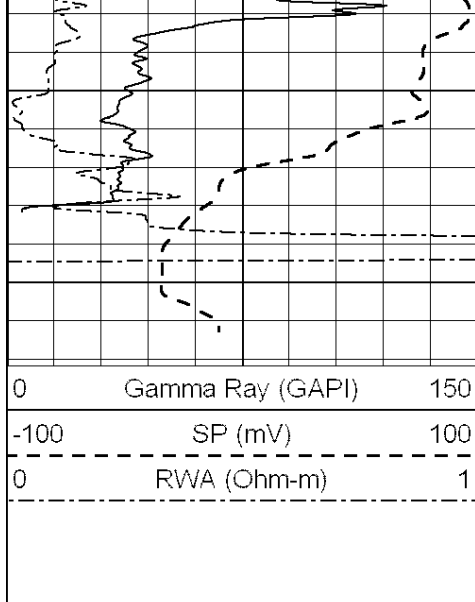
4650

4700

4750

4800

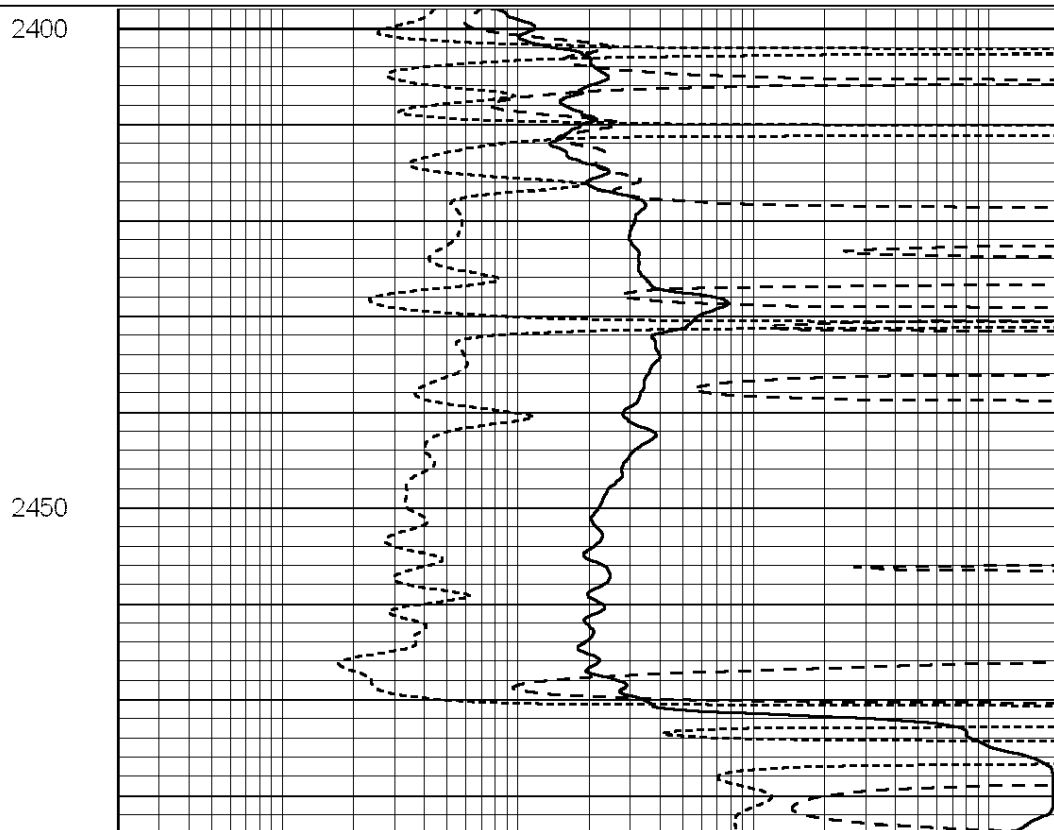
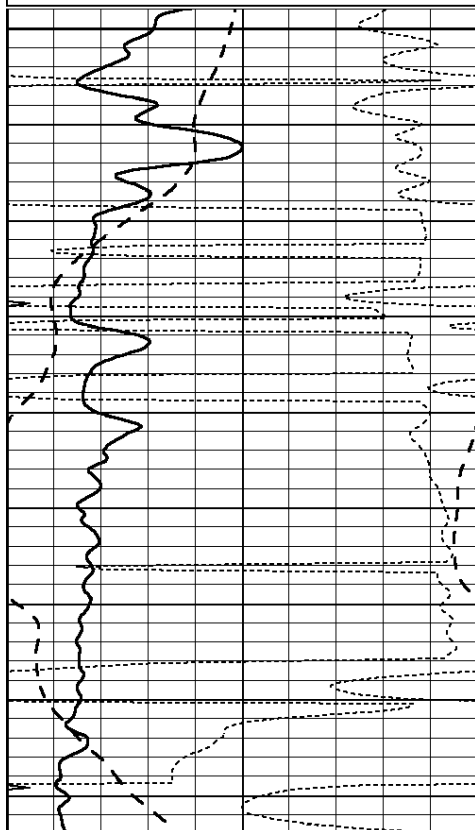
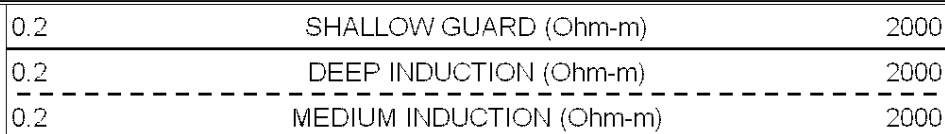
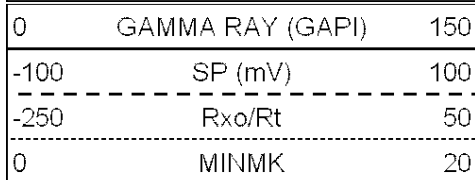


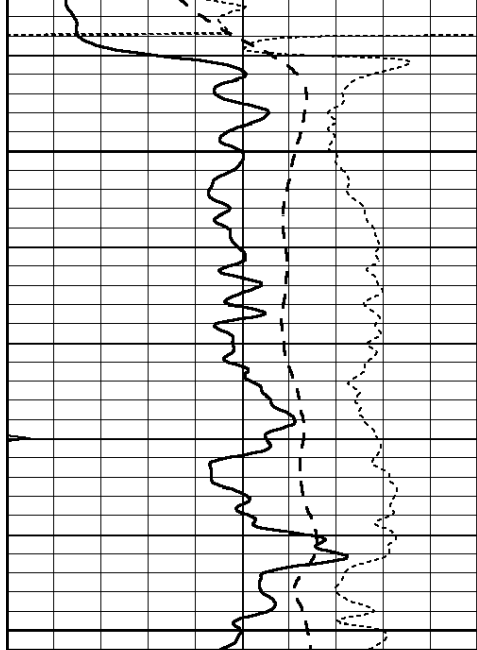


**NABORS**  
**COMPLETION**  
**& PRODUCTION**  
**SERVICES CO.**

# ANHYDRITE

Database File: 26509pe.db  
 Dataset Pathname: pass3.11  
 Presentation Format: \_dil  
 Dataset Creation: Fri Apr 03 14:27:35 2015  
 Charted by: Depth in Feet scaled 1:240

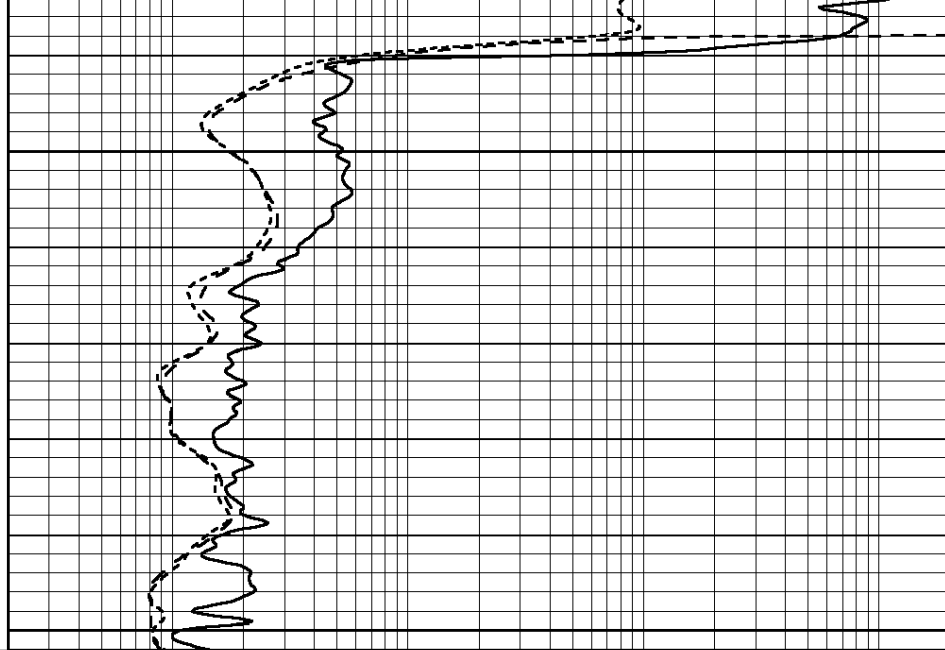




2500

2550

0	GAMMA RAY (GAPI)	150
-100	SP (mV)	100
-250	Rxo/Rt	50
0	MINMK	20



0.2	SHALLOW GUARD (Ohm-m)	2000
0.2	DEEP INDUCTION (Ohm-m)	2000
0.2	MEDIUM INDUCTION (Ohm-m)	2000

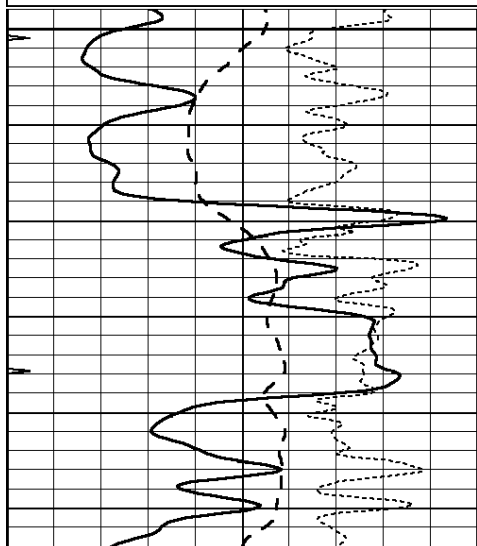


# MAIN SECTION

Database File: 26509pe.db  
 Dataset Pathname: pass3.10  
 Presentation Format: \_dil  
 Dataset Creation: Fri Apr 03 14:27:21 2015  
 Charted by: Depth in Feet scaled 1:240

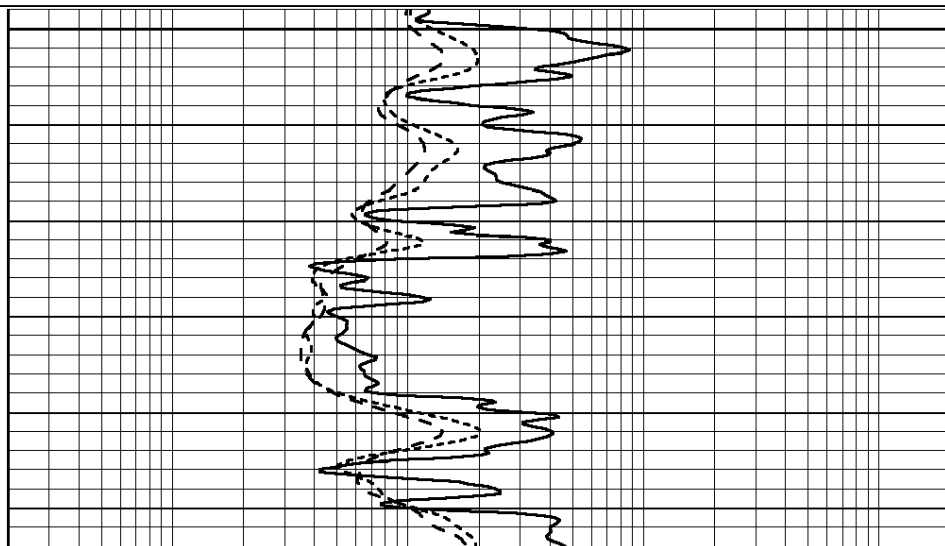
0	GAMMA RAY (GAPI)	150
-100	SP (mV)	100
-250	Rxo/Rt	50
0	MINMK	20

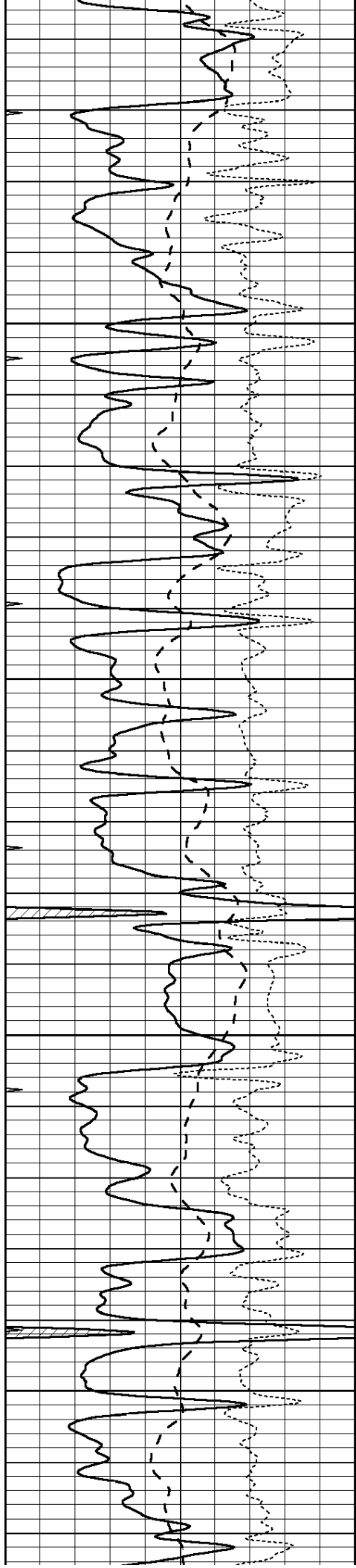
0.2	SHALLOW GUARD (Ohm-m)	2000
0.2	DEEP INDUCTION (Ohm-m)	2000
0.2	MEDIUM INDUCTION (Ohm-m)	2000



3700

3750



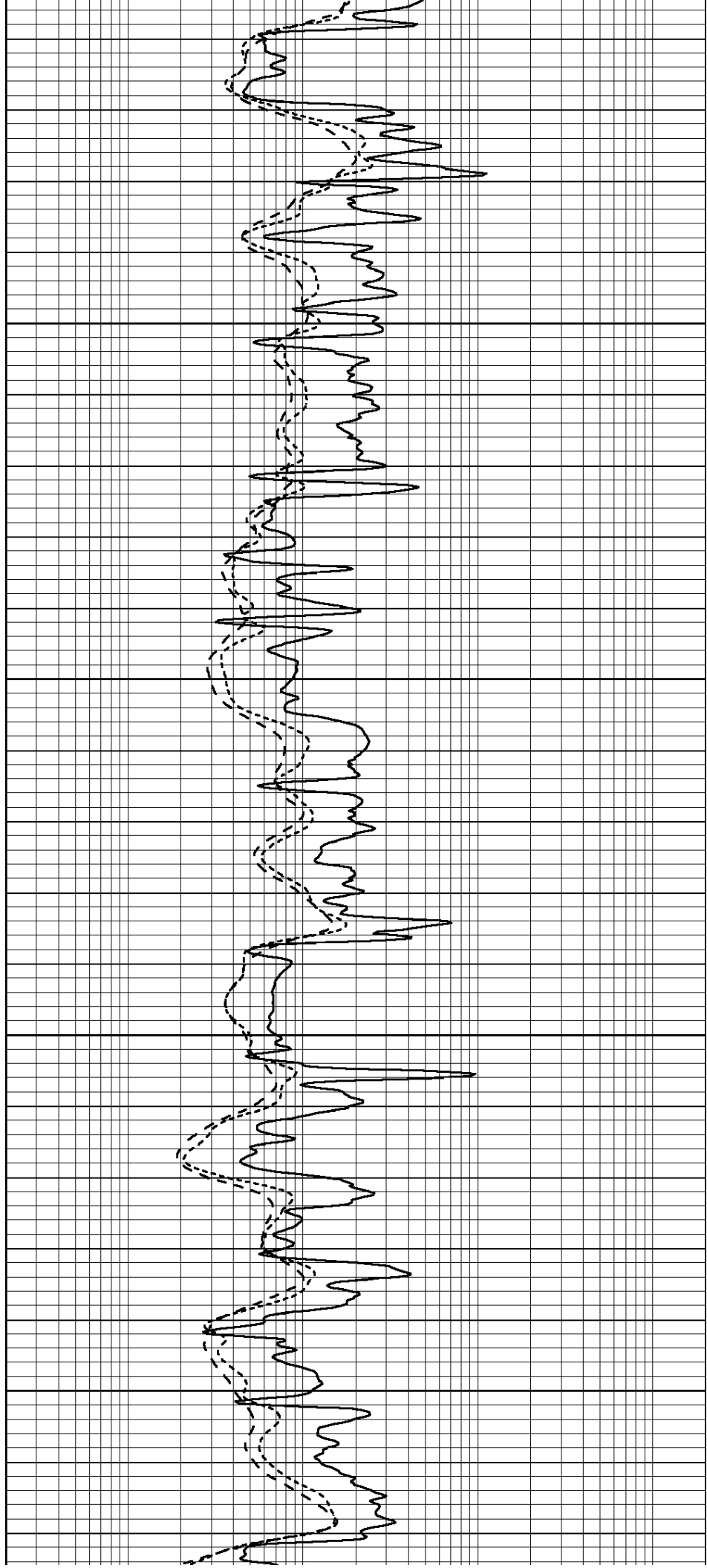


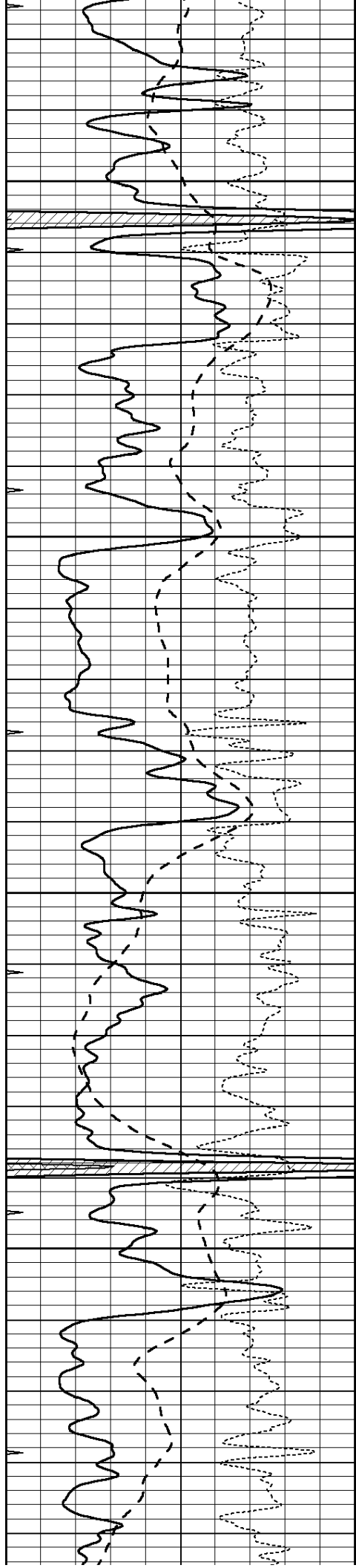
3800

3850

3900

3950



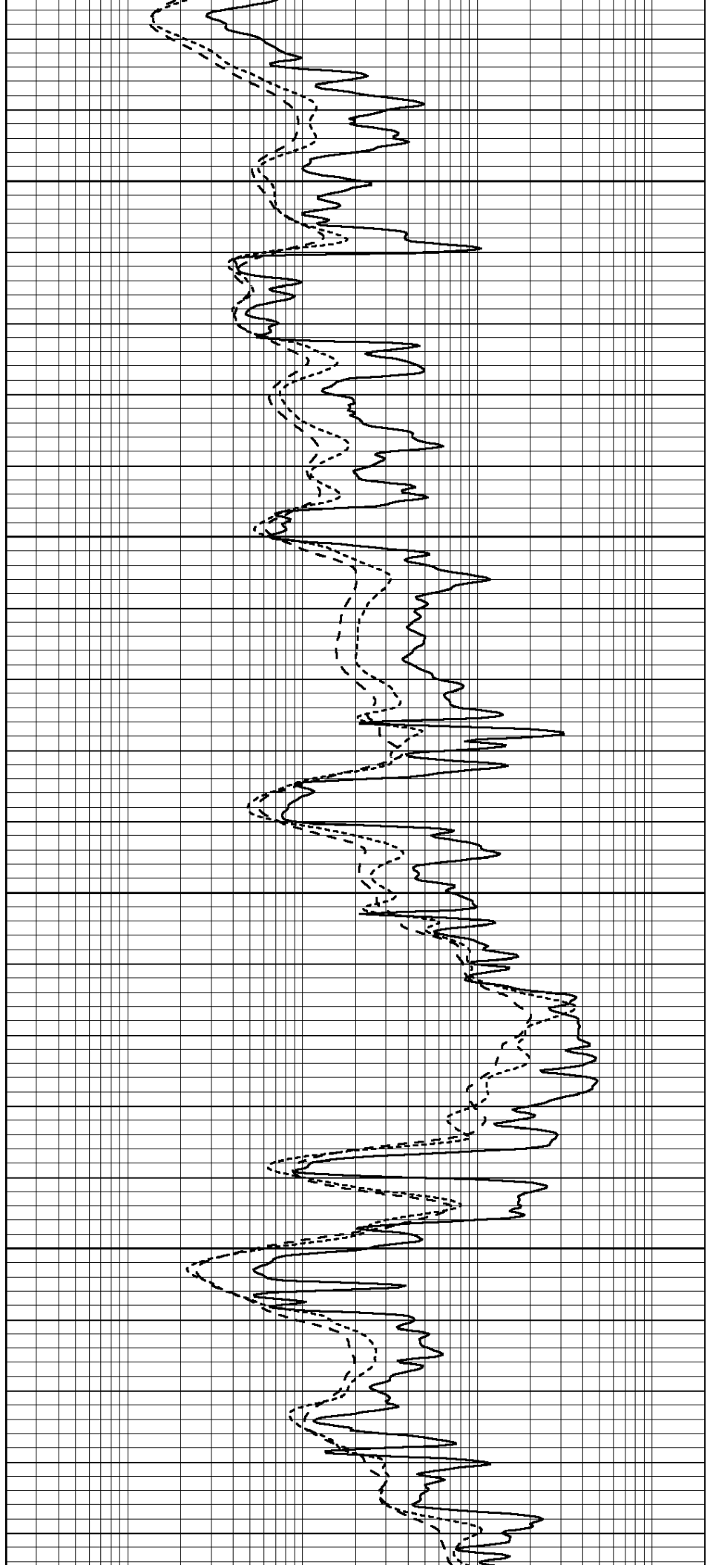


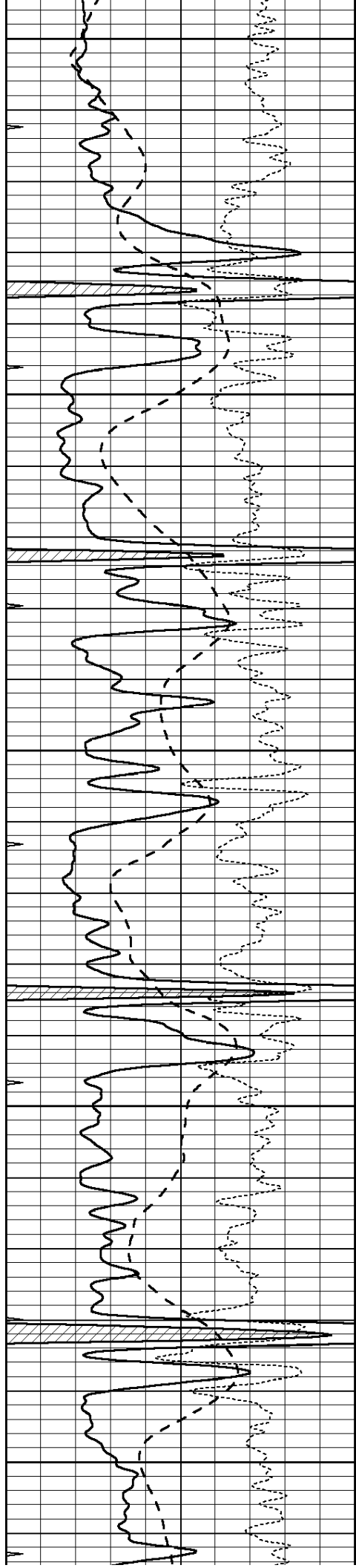
4000

4050

4100

4150





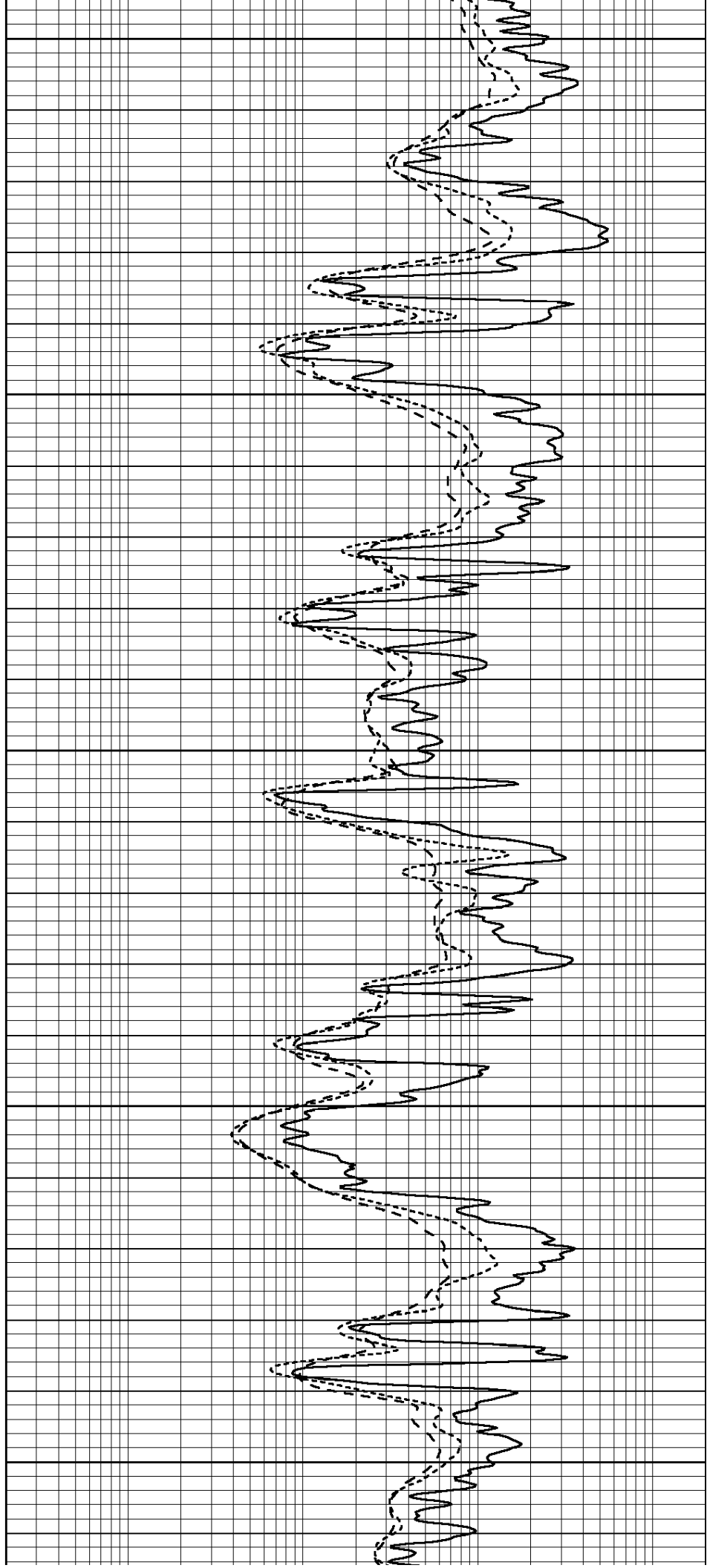
4200

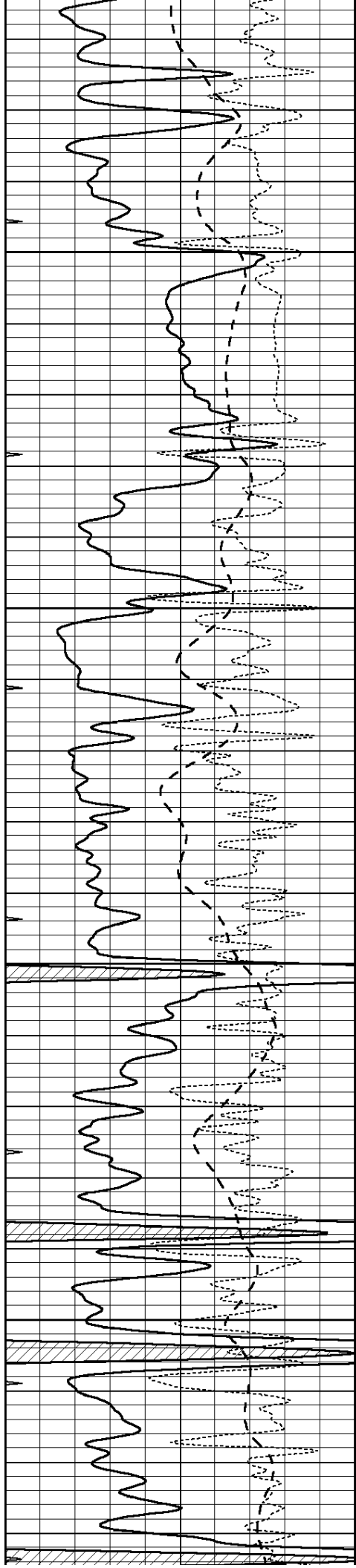
4250

4300

4350

4400



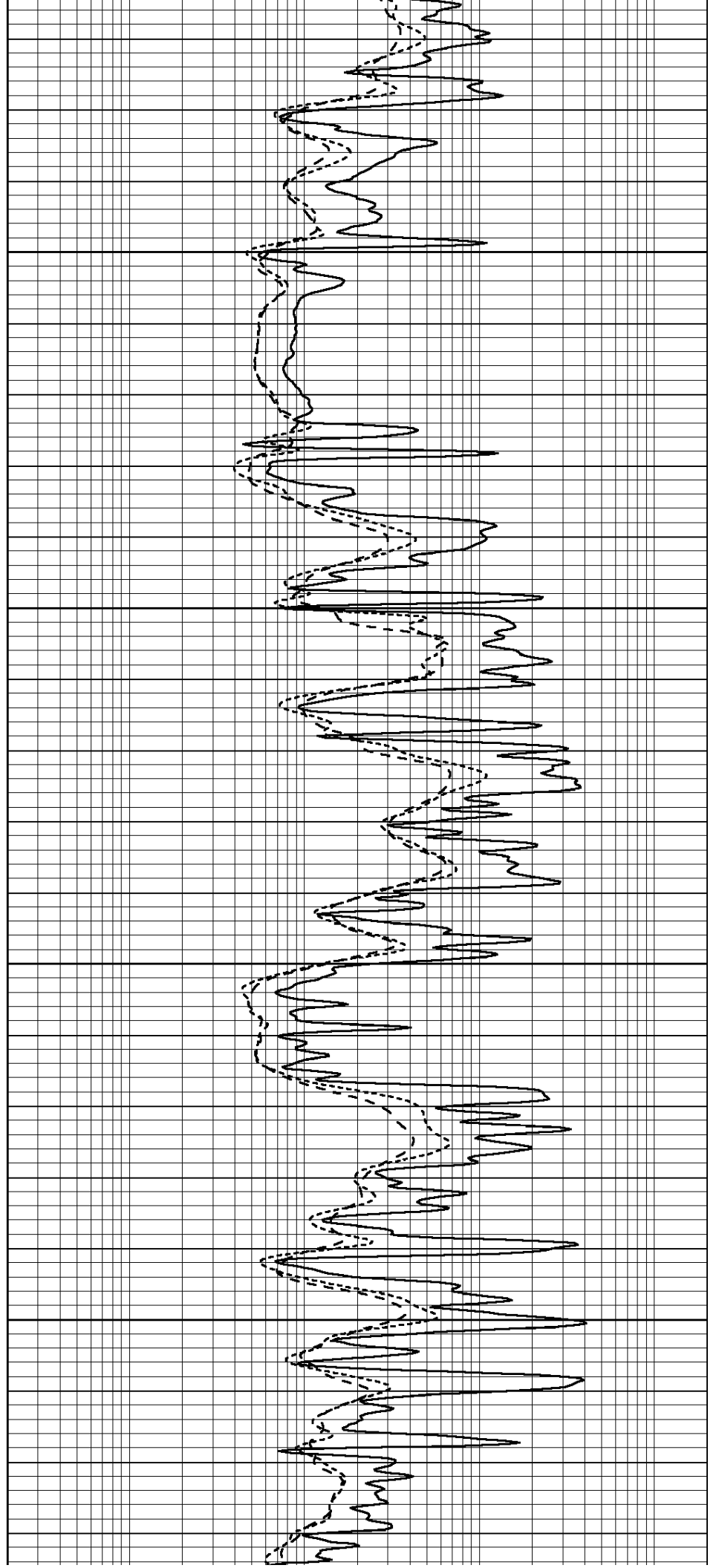


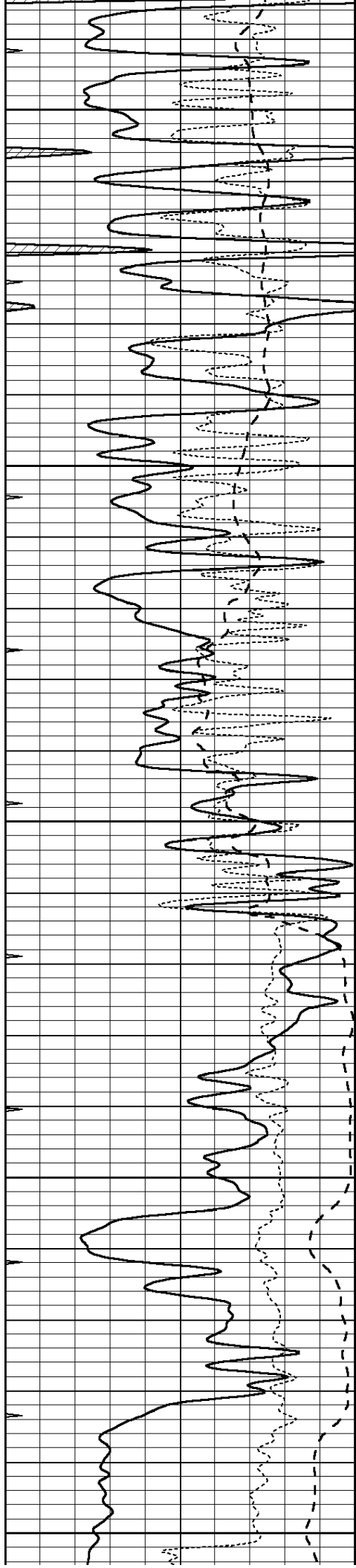
4450

4500

4550

4600





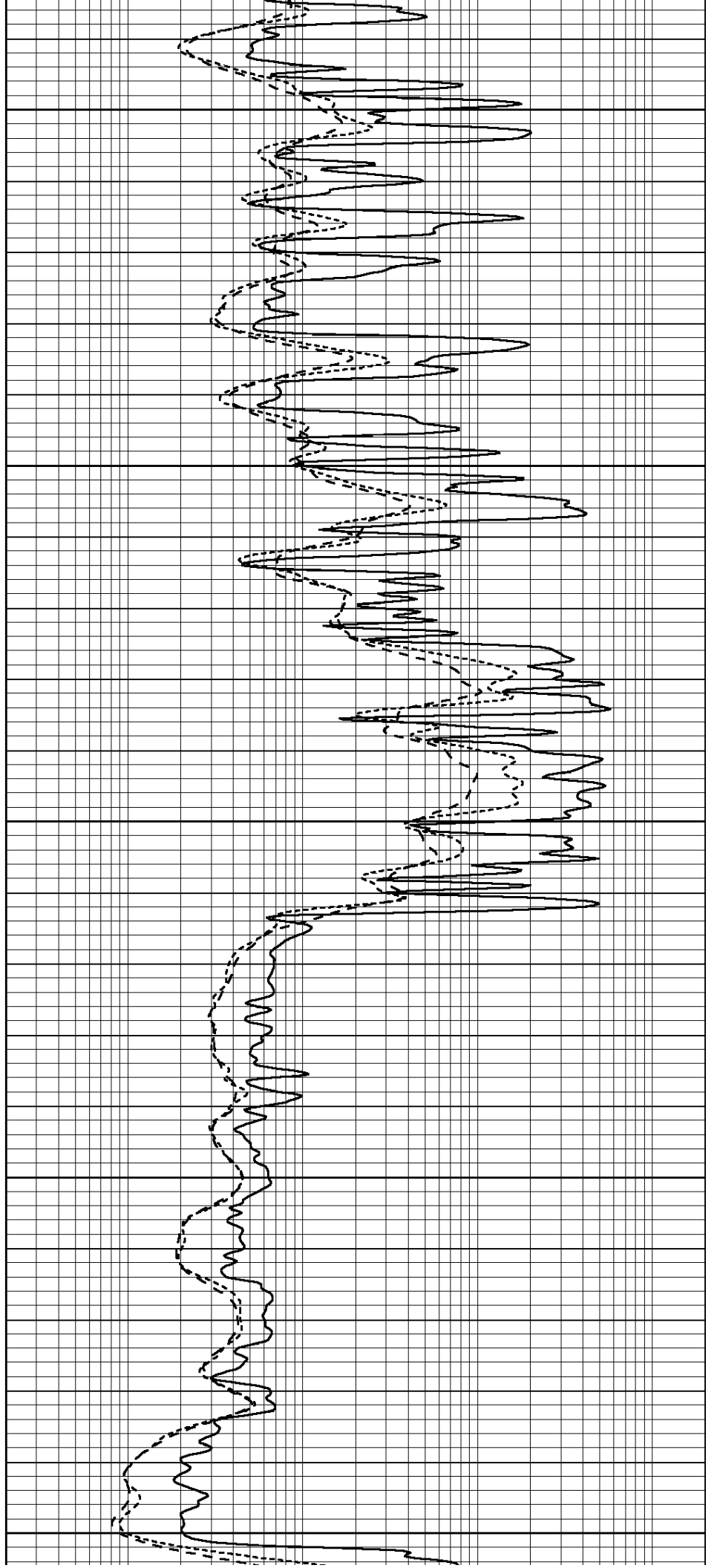
4650

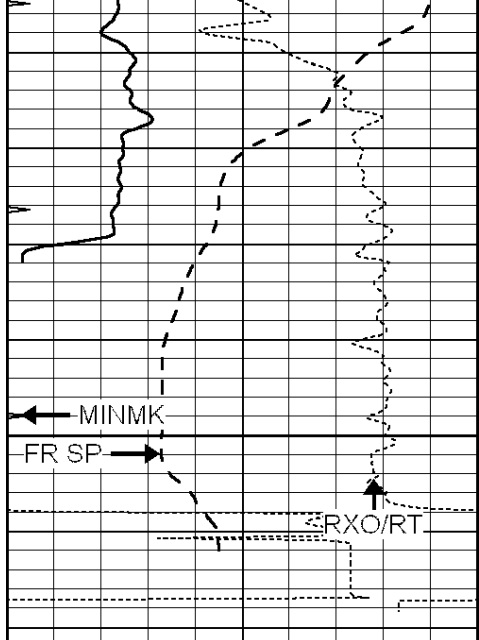
4700

4750

4800

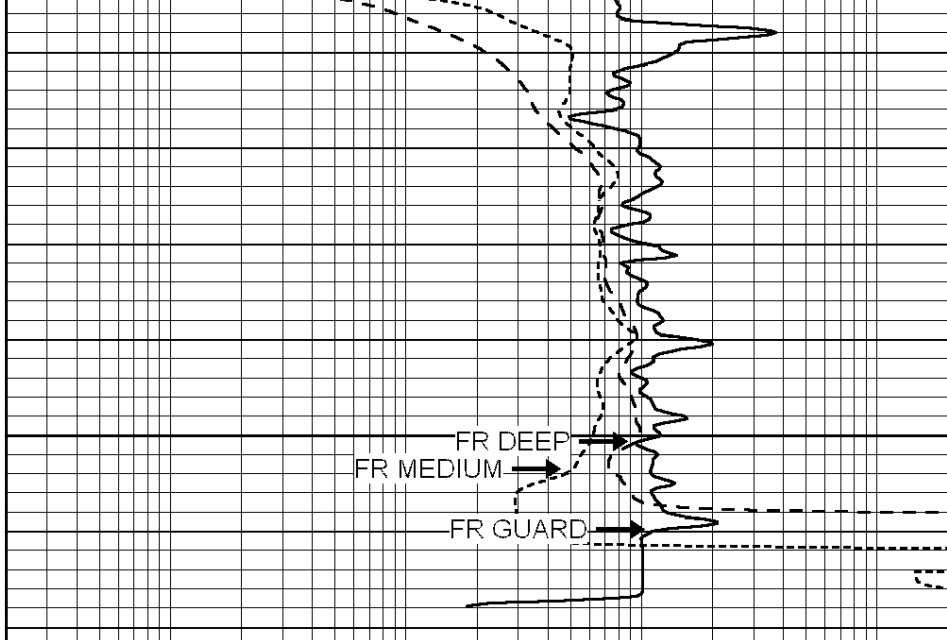
4850





4900  
LTD 4912

0	GAMMA RAY (GAPI)	150
-100	SP (mV)	100
-250	Rxo/Rt	50
0	MINMK	20



0.2	SHALLOW GUARD (Ohm-m)	2000
0.2	DEEP INDUCTION (Ohm-m)	2000
0.2	MEDIUM INDUCTION (Ohm-m)	2000

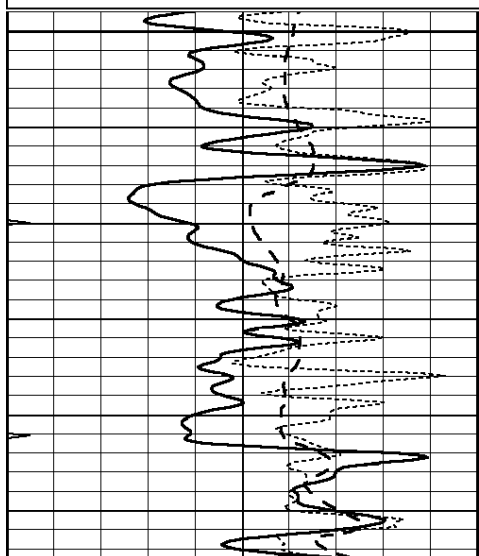


# REPEAT SECTION

Database File: 26509pe.db  
 Dataset Pathname: pass2.6  
 Presentation Format: \_dil  
 Dataset Creation: Fri Apr 03 14:36:35 2015  
 Charted by: Depth in Feet scaled 1:240

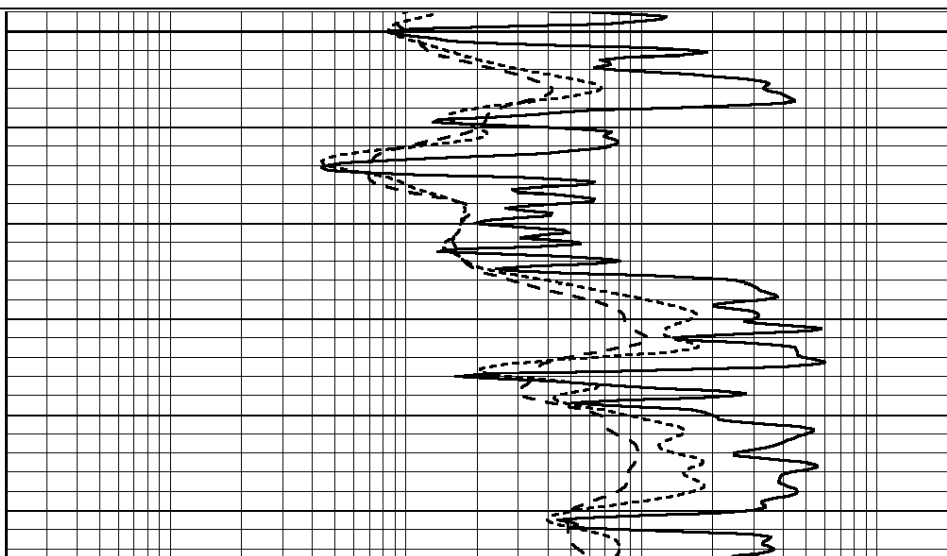
0	GAMMA RAY (GAPI)	150
-100	SP (mV)	100
-250	Rxo/Rt	50
0	MINMK	20

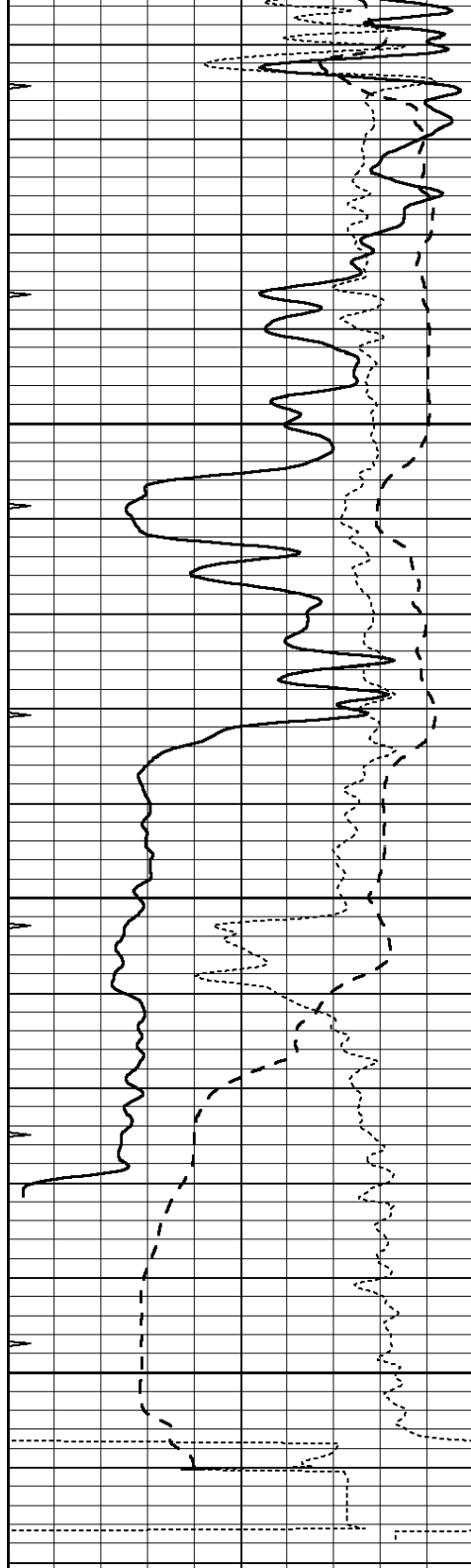
0.2	SHALLOW GUARD (Ohm-m)	2000
0.2	DEEP INDUCTION (Ohm-m)	2000
0.2	MEDIUM INDUCTION (Ohm-m)	2000



4700

4750



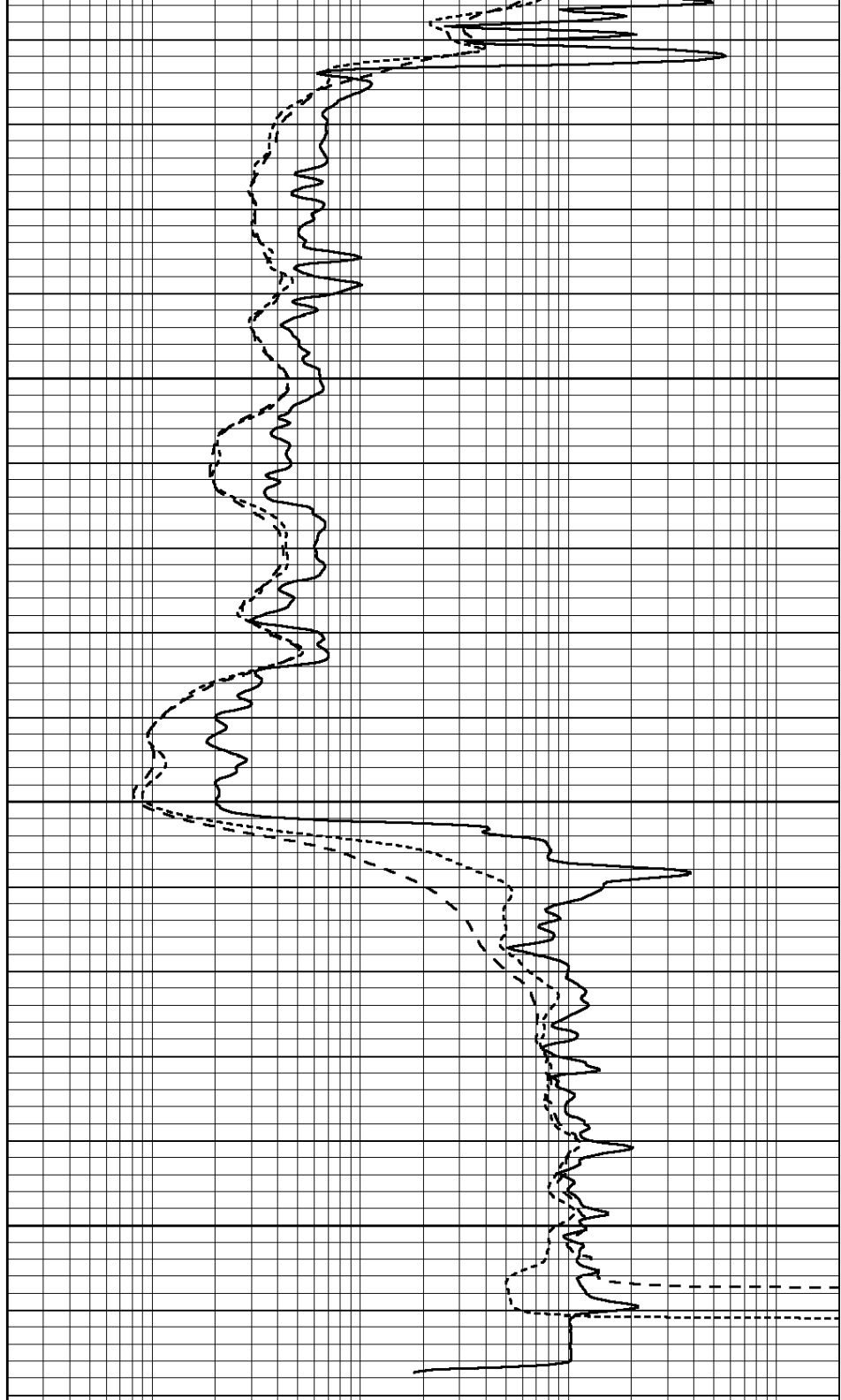


0	GAMMA RAY (GAPI)	150
-100	SP (mV)	100
-250	Rxo/Rt	50
0	MINMK	20

4800

4850

4900



0.2	SHALLOW GUARD (Ohm-m)	2000
0.2	DEEP INDUCTION (Ohm-m)	2000
0.2	MEDIUM INDUCTION (Ohm-m)	2000

Calibration Report

Database File: 26509pe.db  
 Dataset Pathname: pass3.10  
 Dataset Creation: Fri Apr 03 14:27:21 2015

Serial-Model:  
 Surface Cal Performed:  
 Downhole Cal Performed:  
 After Survey Verification Performed:

PROBE9-DILG  
 Wed Apr 01 09:25:52 2015  
 Mon Jul 28 12:02:56 2008  
 Mon Jul 28 12:02:56 2008

Surface Calibration								
Loop:	Readings			References			Results	
	Air	Loop		Air	Loop		m	b
Deep	-0.014	0.629	V	0.000	400.000	mmho/m	670.000	-14.000
Medium	0.039	0.728	V	0.000	464.000	mmho/m	670.000	-24.000
Internal:	Zero	Cal		Zero	Cal		m	b
Deep	0.011	0.610	V	0.000	400.000	mmho/m	667.135	-7.256
Medium	0.005	0.712	V	0.000	464.000	mmho/m	655.677	-3.102

Downhole Calibration								
	Readings			References			Results	
	Zero	Cal		Zero	Cal		m'	b'
Deep	0.000	0.000	mmho/m	14.508	388.384	mmho/m	1.000	0.000
Medium	0.000	0.000	mmho/m	166.367	504.400	mmho/m	1.000	0.000
LL3		7.500	V		1400.000	Ohm-m		
		0.000	V		20.000	Ohm-m		
		-7.200	V		4000.000	mmho-m		

After Survey Verification								
	Readings			Targets			Results	
	Zero	Cal		Zero	Cal		m'	b'
Deep	0.000	0.000	mmho/m	0.000	0.000	mmho/m	0.000	0.000
Medium	0.000	0.000	mmho/m	0.000	0.000	mmho/m	0.000	0.000
LL3		1.000	Ohm-m		1.000	Ohm-m		
		0.000	Ohm-m		0.000	Ohm-m		
		1.000	mmho-m		1.000	mmho-m		

Litho Density Calibration Report  
 Serial: 003N    Model: PRB

Master Calibration					Performed Tue Sep 08 14:14:44 2009			
	Background	Magnesium	Aluminum	Sandstone				
Window 1	2042.6	12312.8	4225.8	13758.4				cps
Window 2	1855.8	10134.7	3624.2	11113.1				cps
Window 3	1639.4	6760.2	2716.3	7260.3				cps
Window 4	466.4	469.2	466.1	476.5				cps
Long Space	0.0	8278.9	1768.4	9257.4				cps
Short Space	2.2	2377.3	1544.1	2574.2				cps
Rho		1.7100	2.5900	1.3800				g/cc
Pe		0.0000	2.5700	1.5500				
Rib Angle	: 44.4	Rib Slope	: 0.979	Density/Spine Ratio				: 0.549
Spine Angle	: 74.4	Spine Slope	: 3.577	Spine Intercept				: -18.8

Before Survey Verification					Performed Wed Dec 31 18:00:00 1969			
Window 1	0.0	0.0	0.0	0.0				cps
Window 2	0.0	0.0	0.0	0.0				cps
Window 3	0.0	0.0	0.0	0.0				cps
Window 4	0.0	0.0	0.0	0.0				cps
Long Space	0.0	0.0	0.0	0.0				cps
Short Space	0.0	0.0	0.0	0.0				cps

Short Space	0.0	0.0	0.0	0.0	cps
Measured Rho	0.0000	0.0000	0.0000	0.0000	g/cc
Measured Correction	0.0000	0.0000	0.0000	0.0000	g/cc
Measured Pe			0.0000	0.0000	

After Survey Verification		Performed Wed Dec 31 18:00:00 1969			
Window 1	0.0	0.0	0.0	0.0	cps
Window 2	0.0	0.0	0.0	0.0	cps
Window 3	0.0	0.0	0.0	0.0	cps
Window 4	0.0	0.0	0.0	0.0	cps
Long Space	0.0	0.0	0.0	0.0	cps
Short Space	0.0	0.0	0.0	0.0	cps
Measured Rho		0.0000	0.0000	0.0000	g/cc
Measured Correction		0.0000	0.0000	0.0000	g/cc
Measured Pe			0.0000	0.0000	

Compensated Neutron Calibration Report

Serial Number: 070808  
Tool Model: Probe

PRE-SURVEY VERIFICATION				
Detector	Readings	Measured	Target	
Short Space	cps			
Long Space	cps	pu	pu	

POST-SURVEY VERIFICATION				
Detector	Readings	Measured	Target	
Short Space	cps			
Long Space	cps	pu	pu	

Gamma Ray Calibration Report

Serial Number: 070558  
Tool Model: OPEN\_GR  
Performed: Sat Mar 21 17:40:37 2015

Calibrator Value: 1.0 GAPI

Background Reading: 0.0 cps  
Calibrator Reading: 1.0 cps

Sensitivity: 0.2600 GAPI/cps