



**COMPLETION
& PRODUCTION
SERVICES CO.**

**SONIC
LOG**

Company RED OAK ENERGY, INC.
Well WALKER #1-25
Field WILDCAT
County WICHITA
State KANSAS

Company RED OAK ENERGY, INC.
Well WALKER #1-25
Field WILDCAT
County WICHITA State KANSAS

Location: API # : 15-203-20303-0000
415' FSL & 1720' FEL
NW - SE - SW - SE
SEC 25 TWP 16S RGE 35W
Permanent Datum GROUND LEVEL Elevation 3171
Log Measured From KELLY BUSHING 5' A.G.L.
Drilling Measured From KELLY BUSHING
Other Services
CDL/CNL/PE
DIL/MEL
Elevation
K.B. 3176
D.F. 3174
G.L. 3171

Date	4/3/15		
Run Number	TWO		
Depth Driller	4912		
Depth Logger	4912		
Bottom Logged Interval	4904		
Top Log Interval	200		
Casing Driller	8 5/8"@265'		
Casing Logger	264		
Bit Size	7 7/8"		
Type Fluid in Hole	CHEMICAL MUD	CHLORIDES 7,000 PPM	
Density / Viscosity	9.3/55		
pH / Fluid Loss	10.0/9.6		
Source of Sample	FLOWLINE		
Rim @ Meas. Temp	.550@72F		
Rmf @ Meas. Temp	.413@72F		
Rmc @ Meas. Temp	.660@72F		
Source of Rmf / Rmc	MEASUREMENT		
Rim @ BHT	.319@124F		
Time Circulation Stopped	4.5 HOURS		
Time Logger on Bottom	12:45 P.M.		
Maximum Recorded Temperature	124F		
Equipment Number	4854		
Location	HAYS, KANSAS		
Recorded By	JEFF LUEBBERS		
Witnessed By	SEAN DEENIHAN		

<<< Fold Here >>>

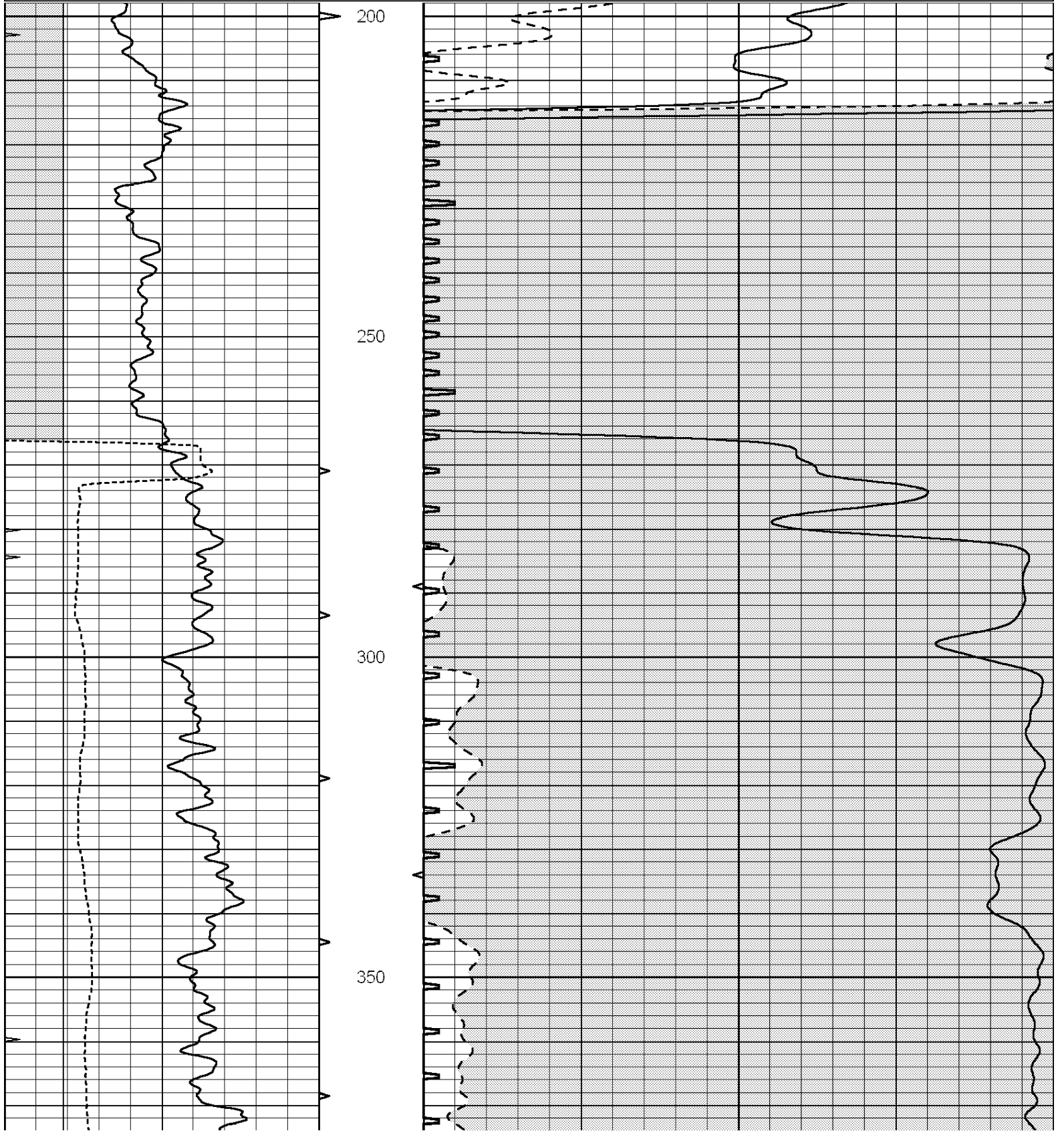
All interpretations are opinions based on inferences from electrical or other measurements and we cannot and do not guarantee the accuracy or correctness of any interpretation, and we shall not, except in the case of gross or willful negligence on our part, be liable or responsible for any loss, costs, damages, or expenses incurred or sustained by anyone resulting from any interpretation made by any of our officers, agents or employees. These interpretations are also subject to our general terms and conditions set out in our current Price Schedule.

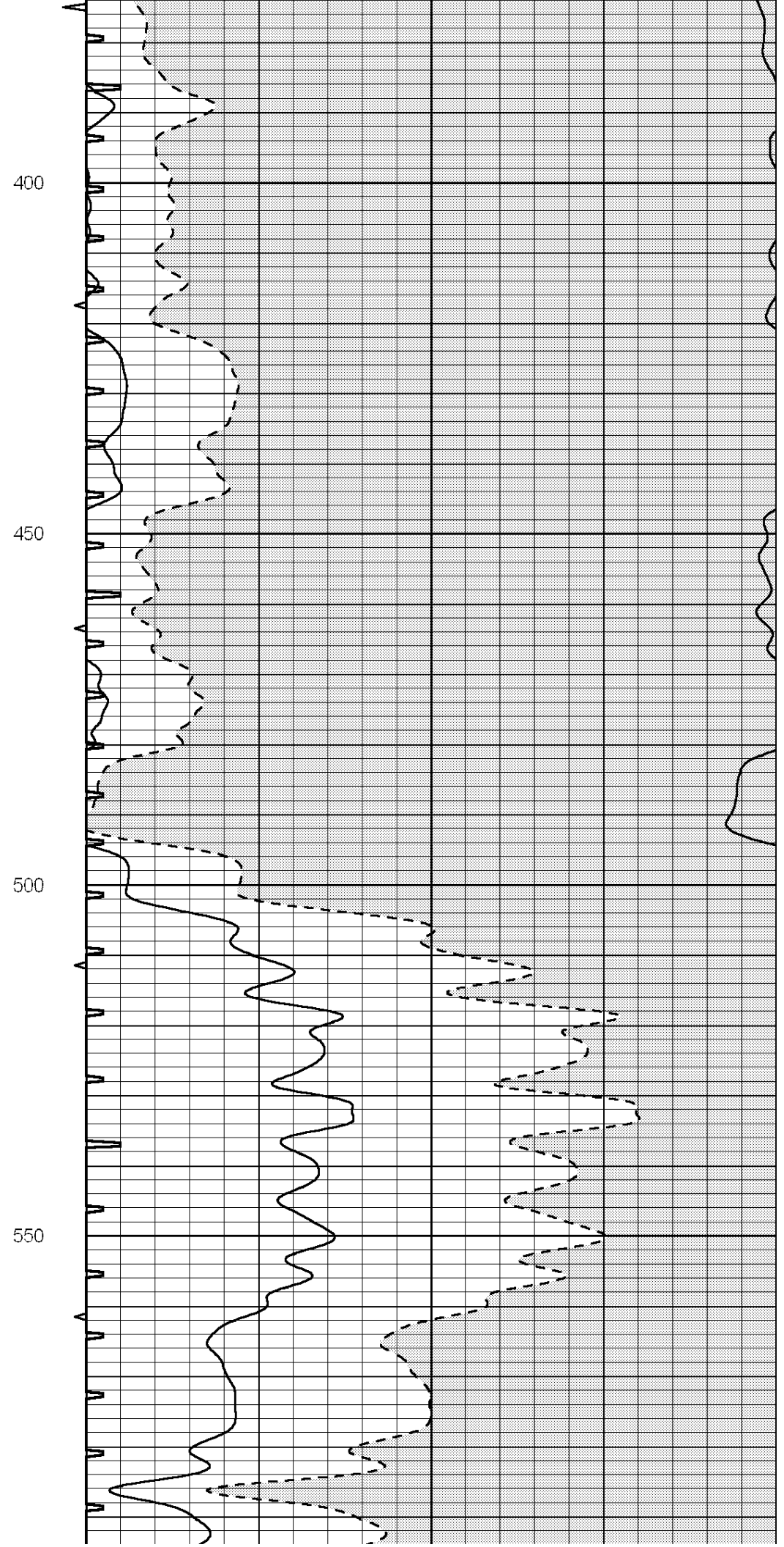
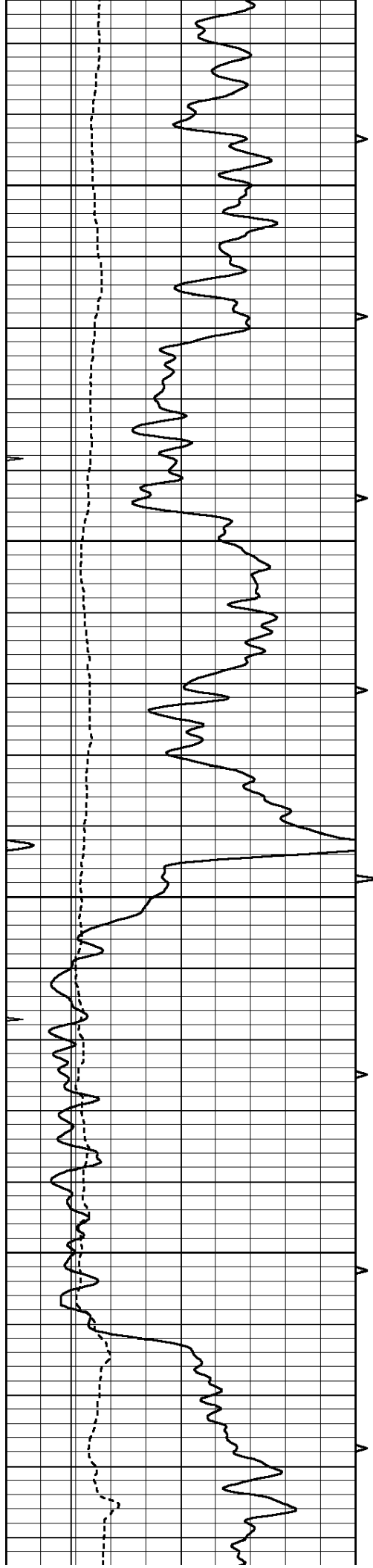
Comments

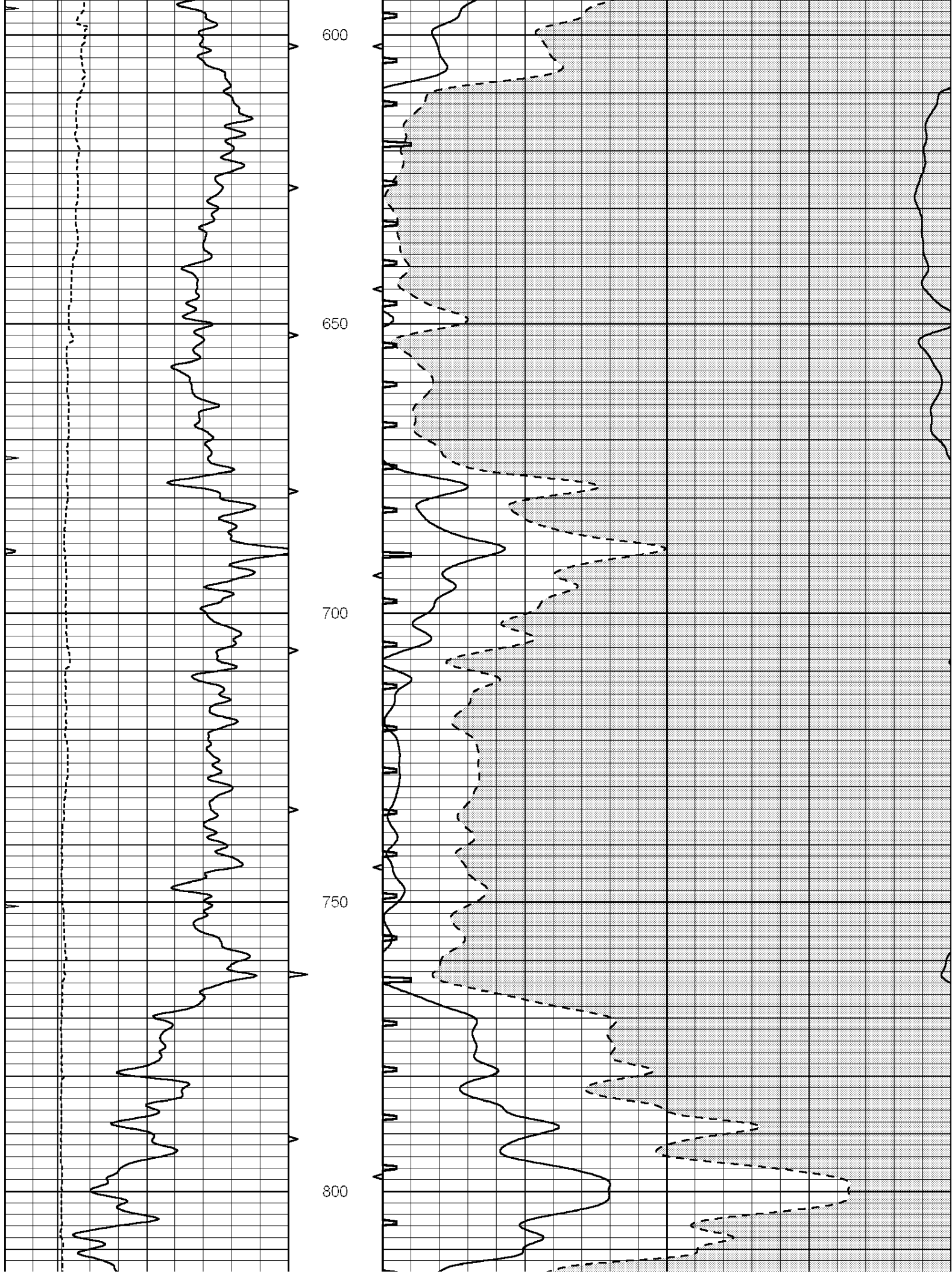
THANK YOU FOR USING "NABORS" HAYS, KANSAS (785) 628-6395
DIRECTIONS
PENCE, KS., W. TO (SCOTT / WICHITA COUNTY LINE), 1S., W. INTO

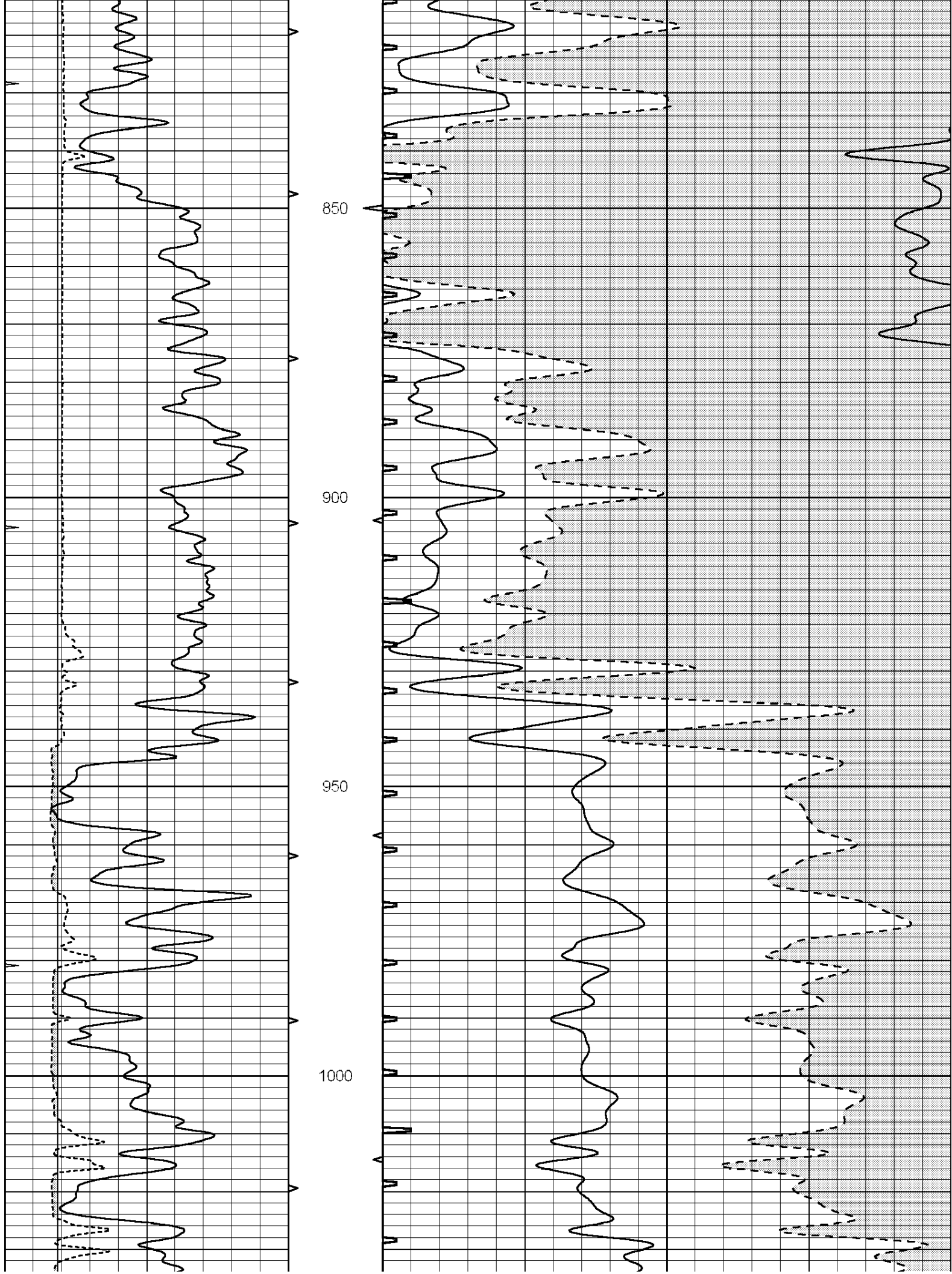
Database File: 26509pe.db
 Dataset Pathname: pass6.7
 Presentation Format: slt
 Dataset Creation: Fri Apr 03 16:51:11 2015 by Calc SOC 120430
 Charted by: Depth in Feet scaled 1:240

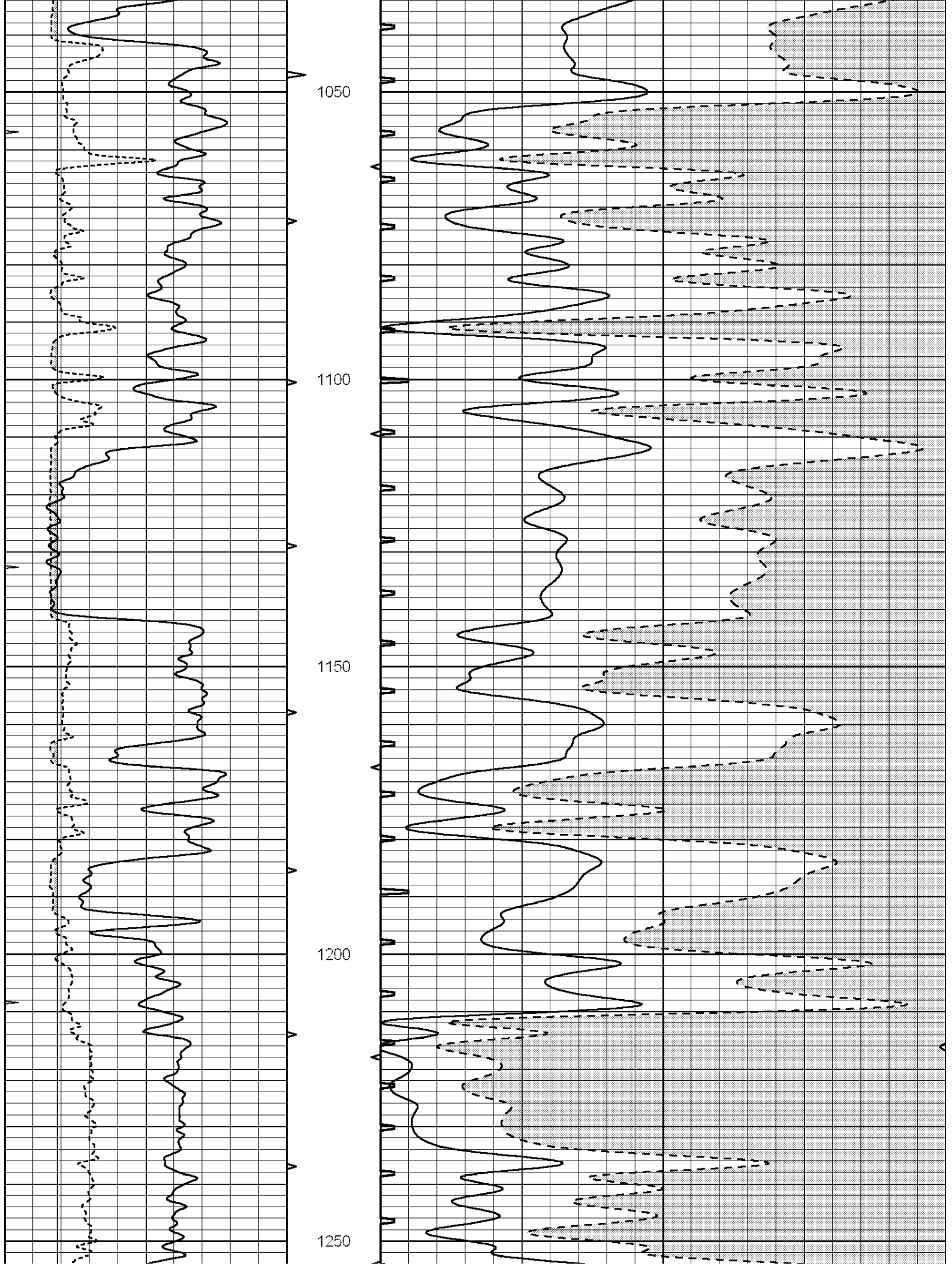
0	GAMMA RAY (GAPI)	150	ABHV	140	DELTA TIME (usec/ft)	40	
6	CALIPER (in)	16	10 (ft3)	0	30	SONIC POROSITY (pu)	-10
0	MINMK	20	TBHV	0	ITT (msec)	20	
			0 (ft3)	10			

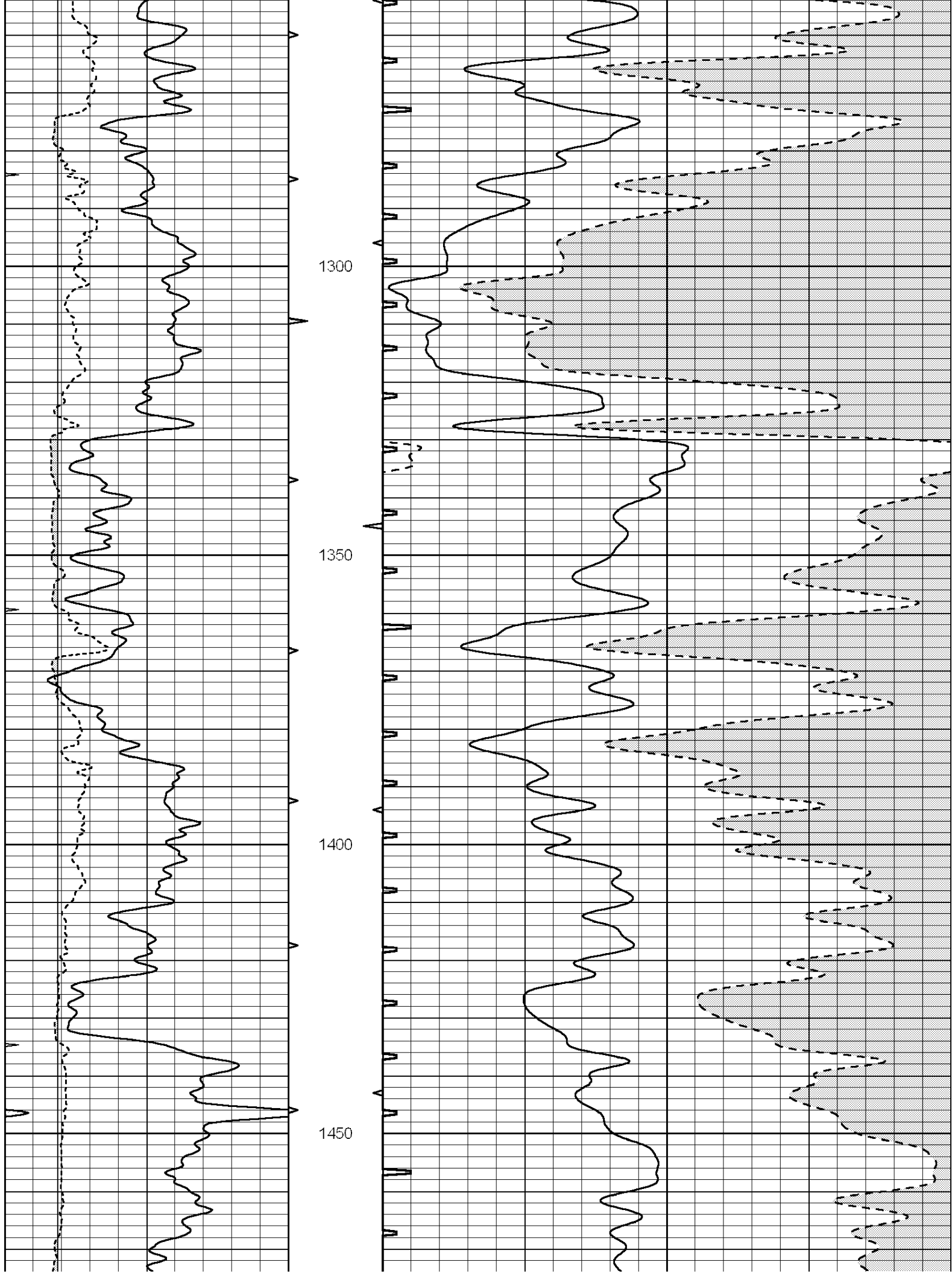


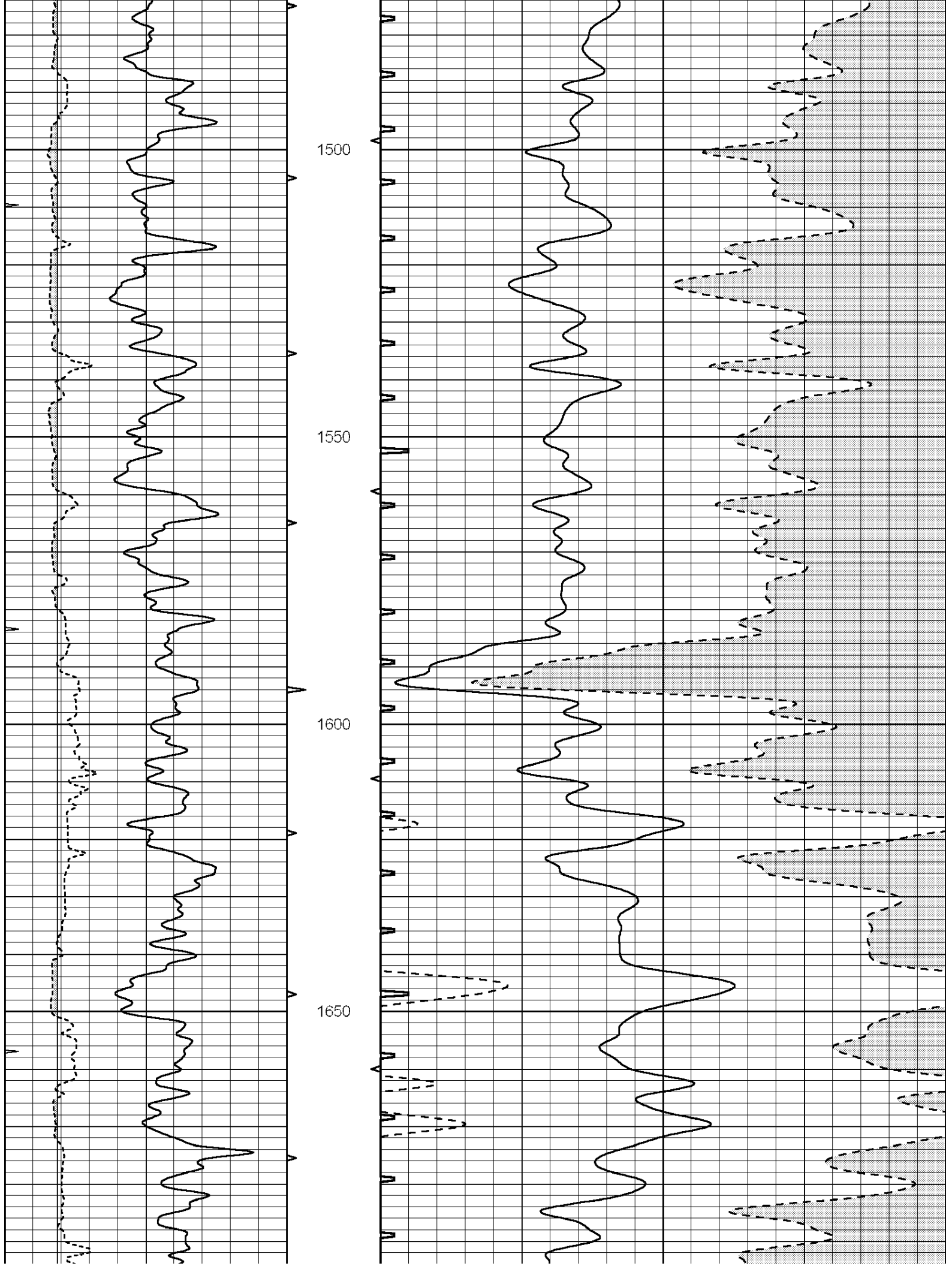


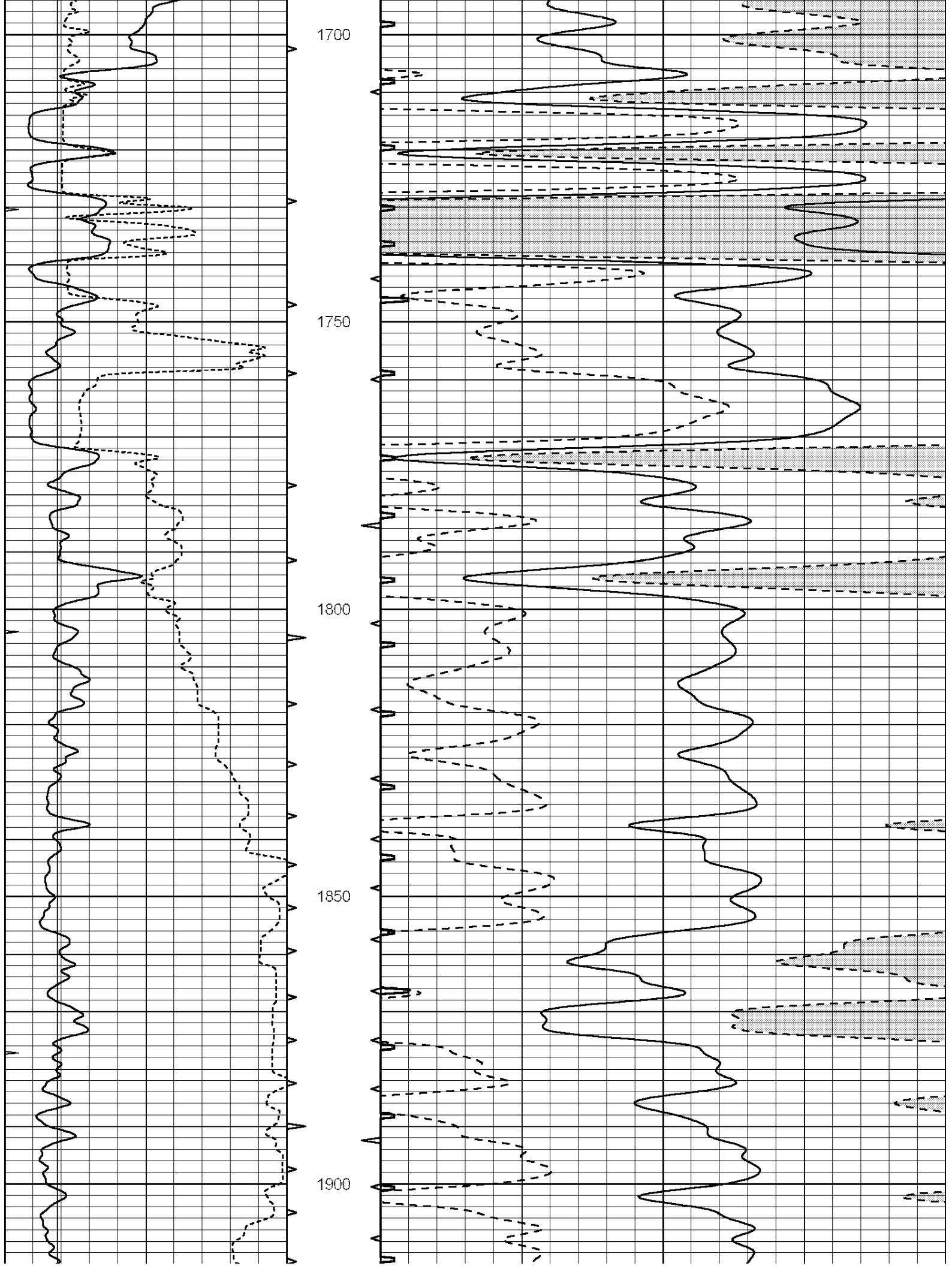


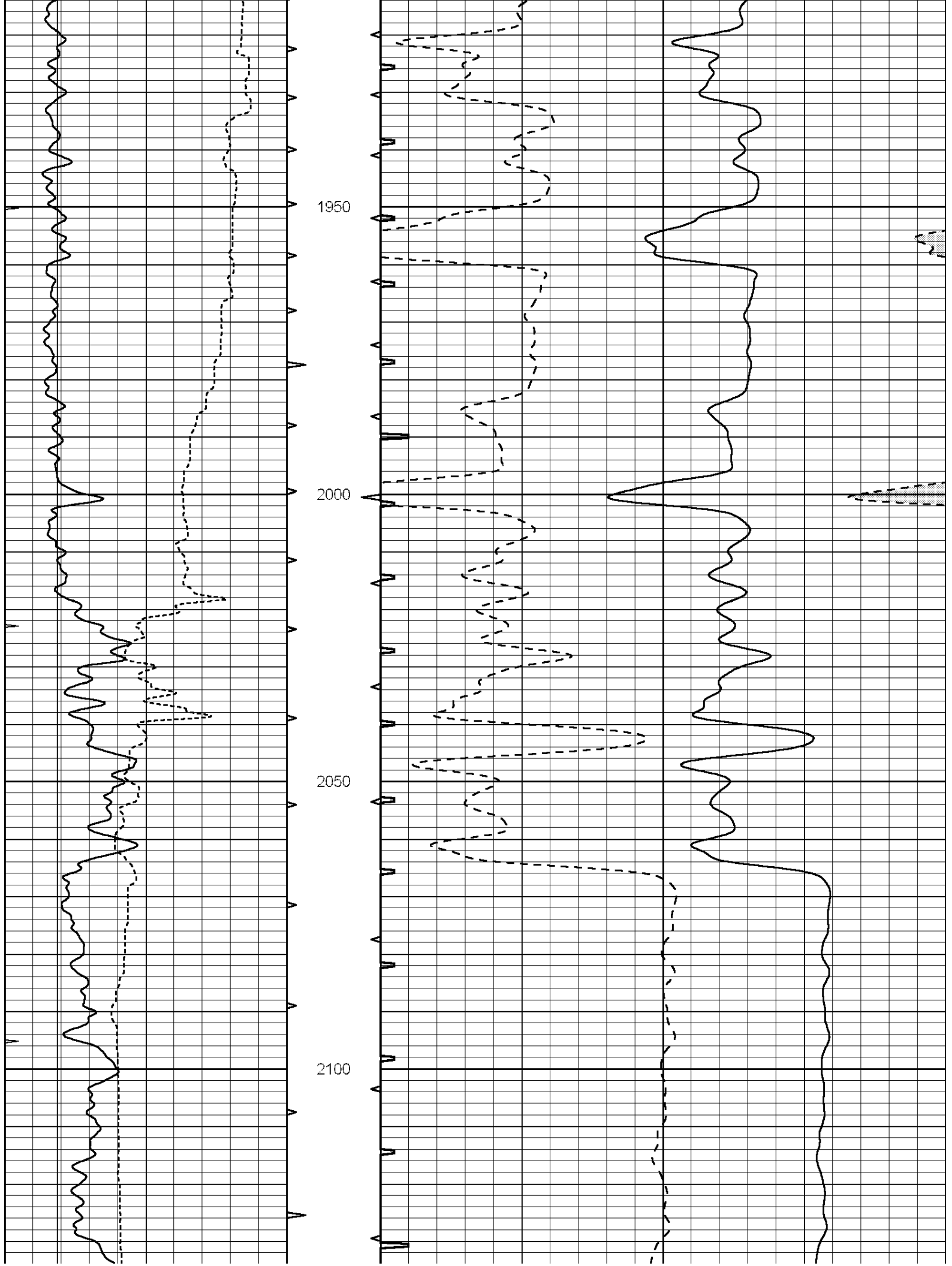


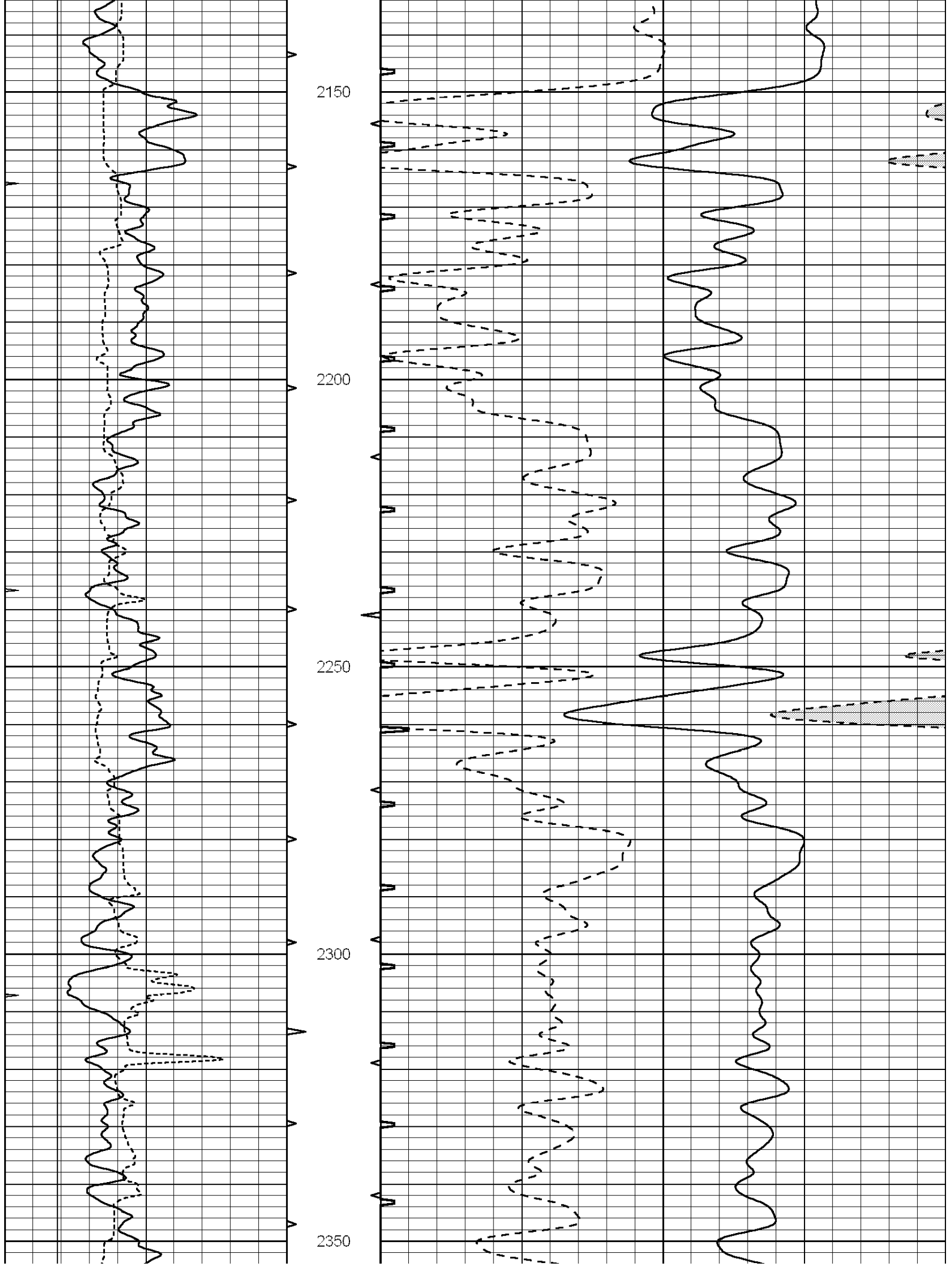


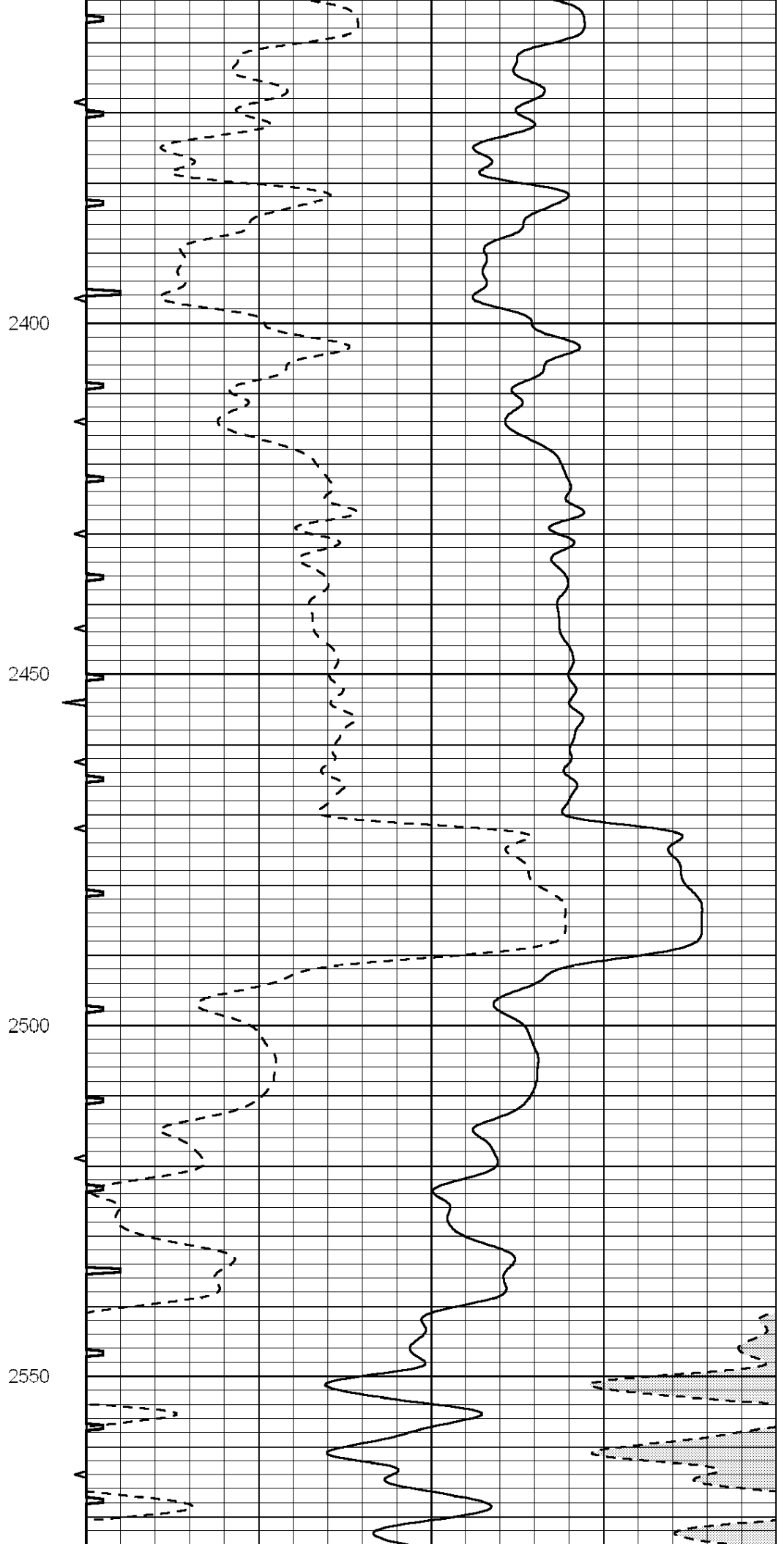
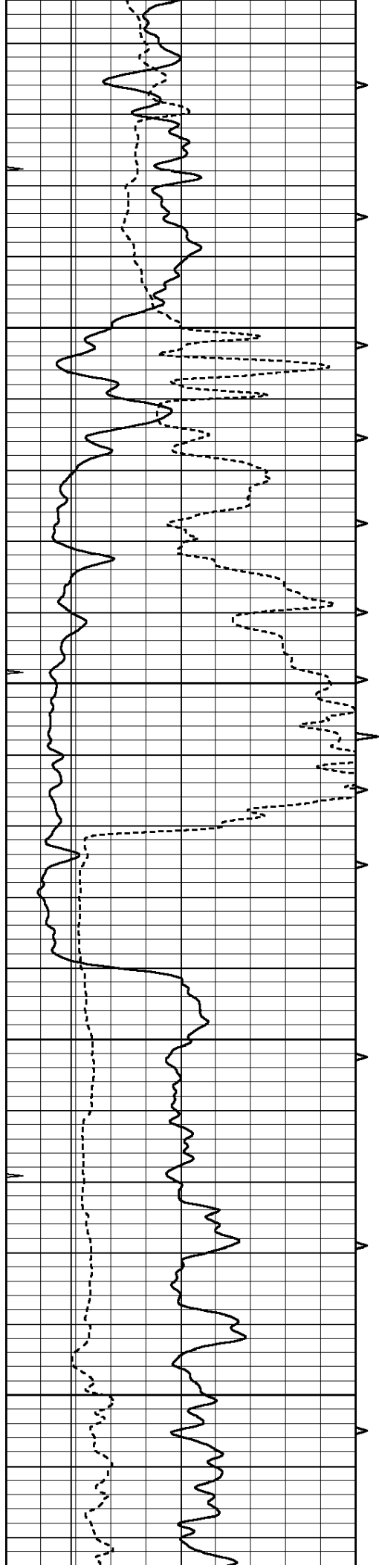


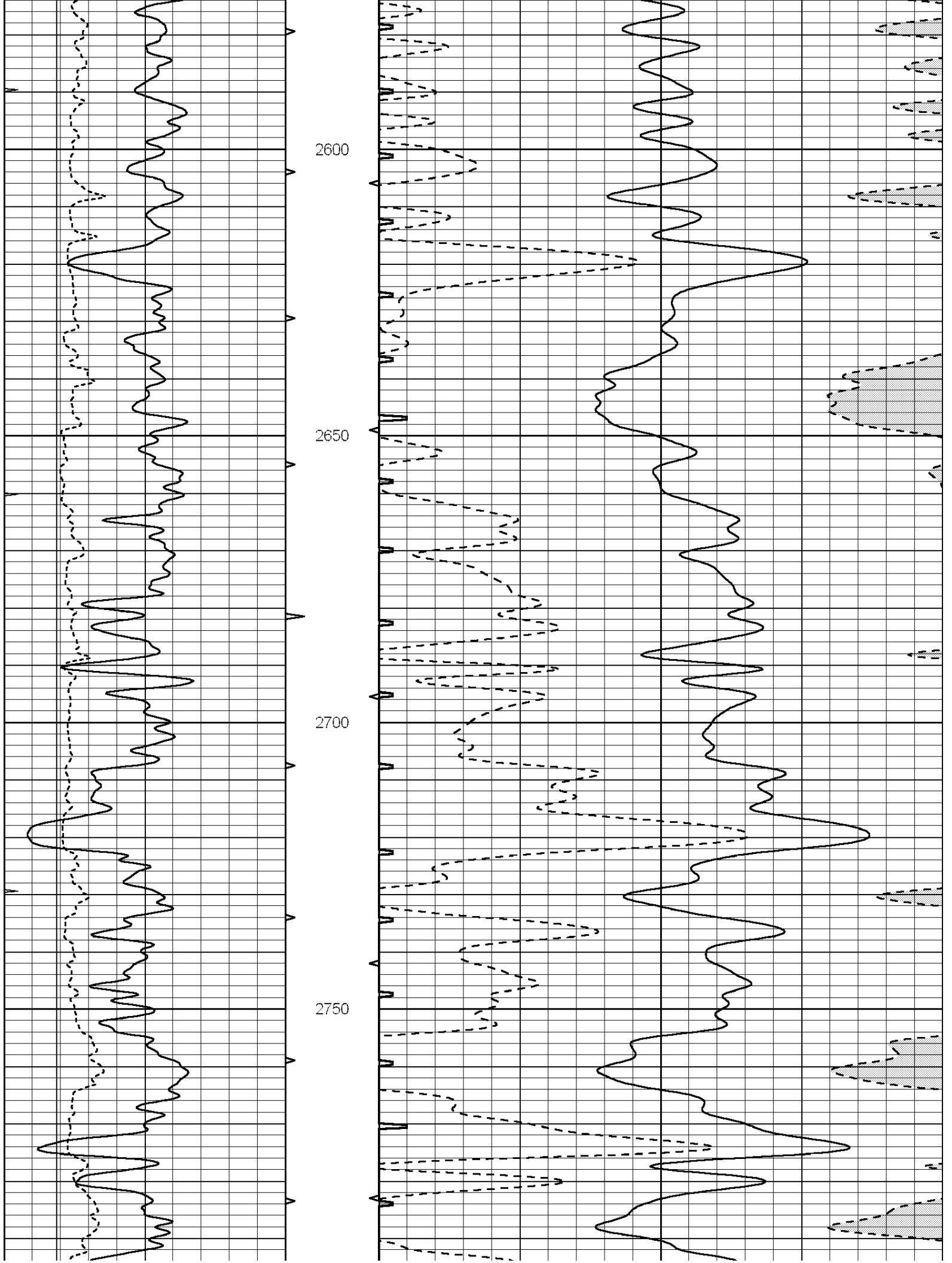


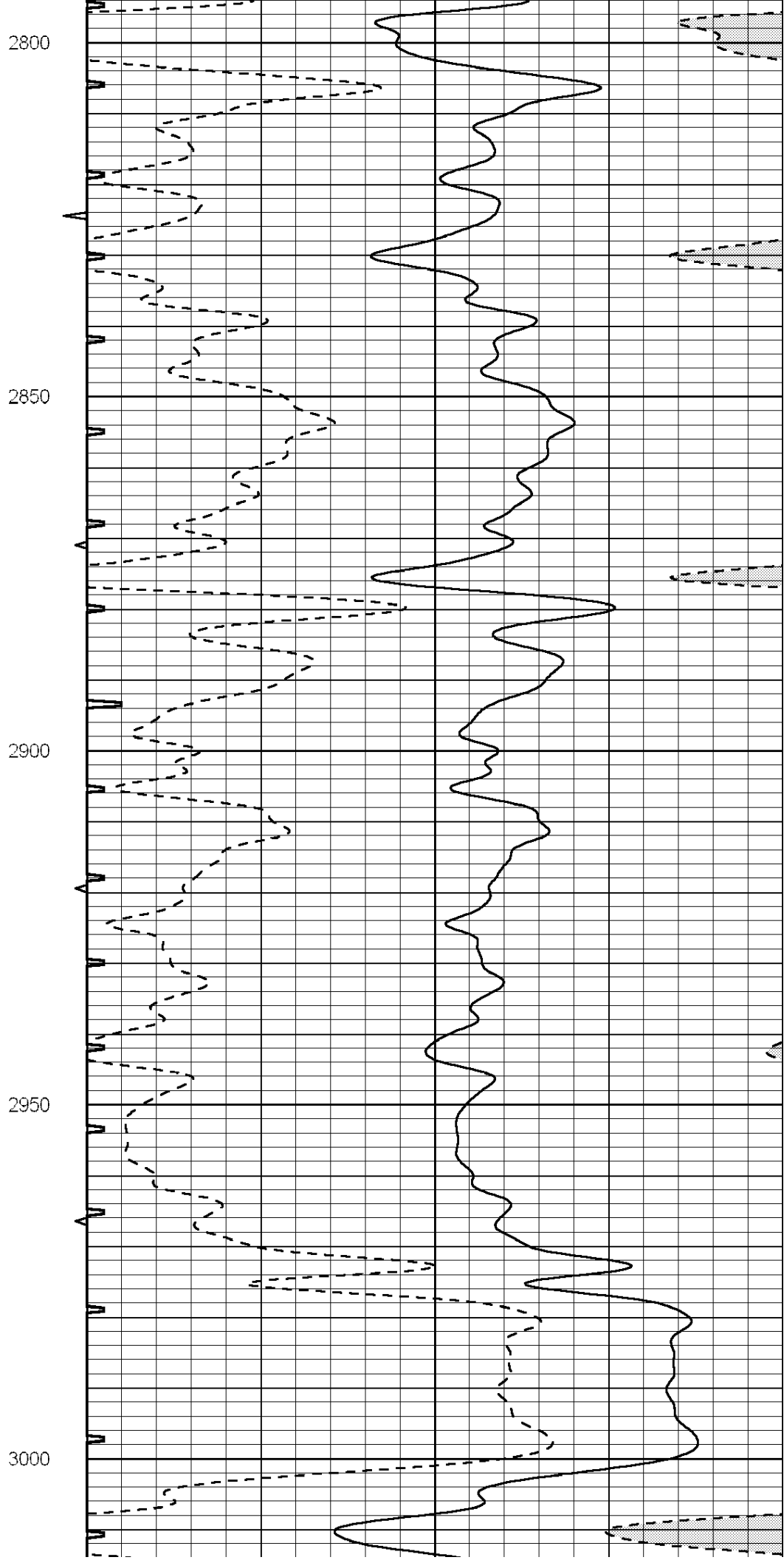
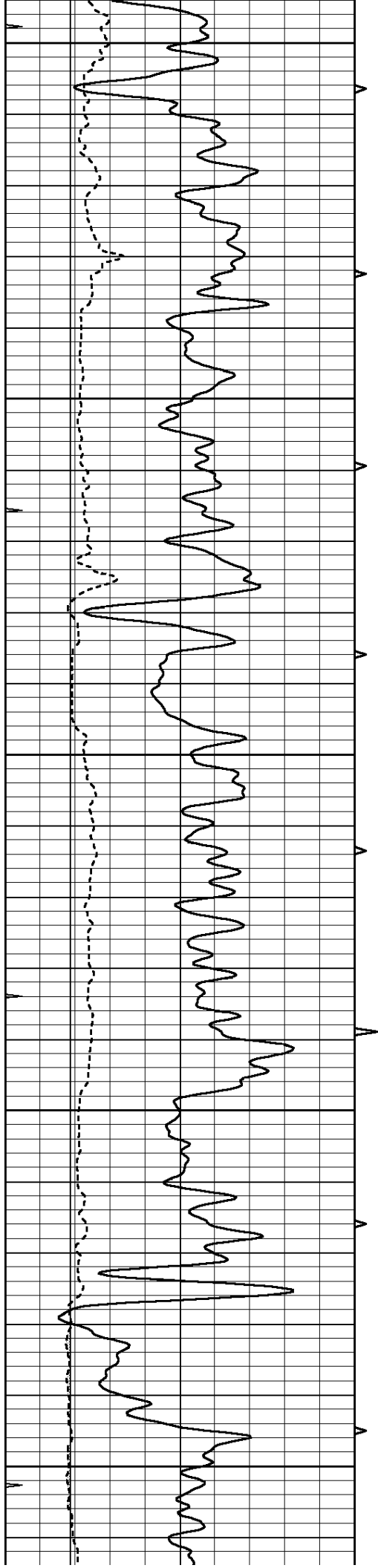


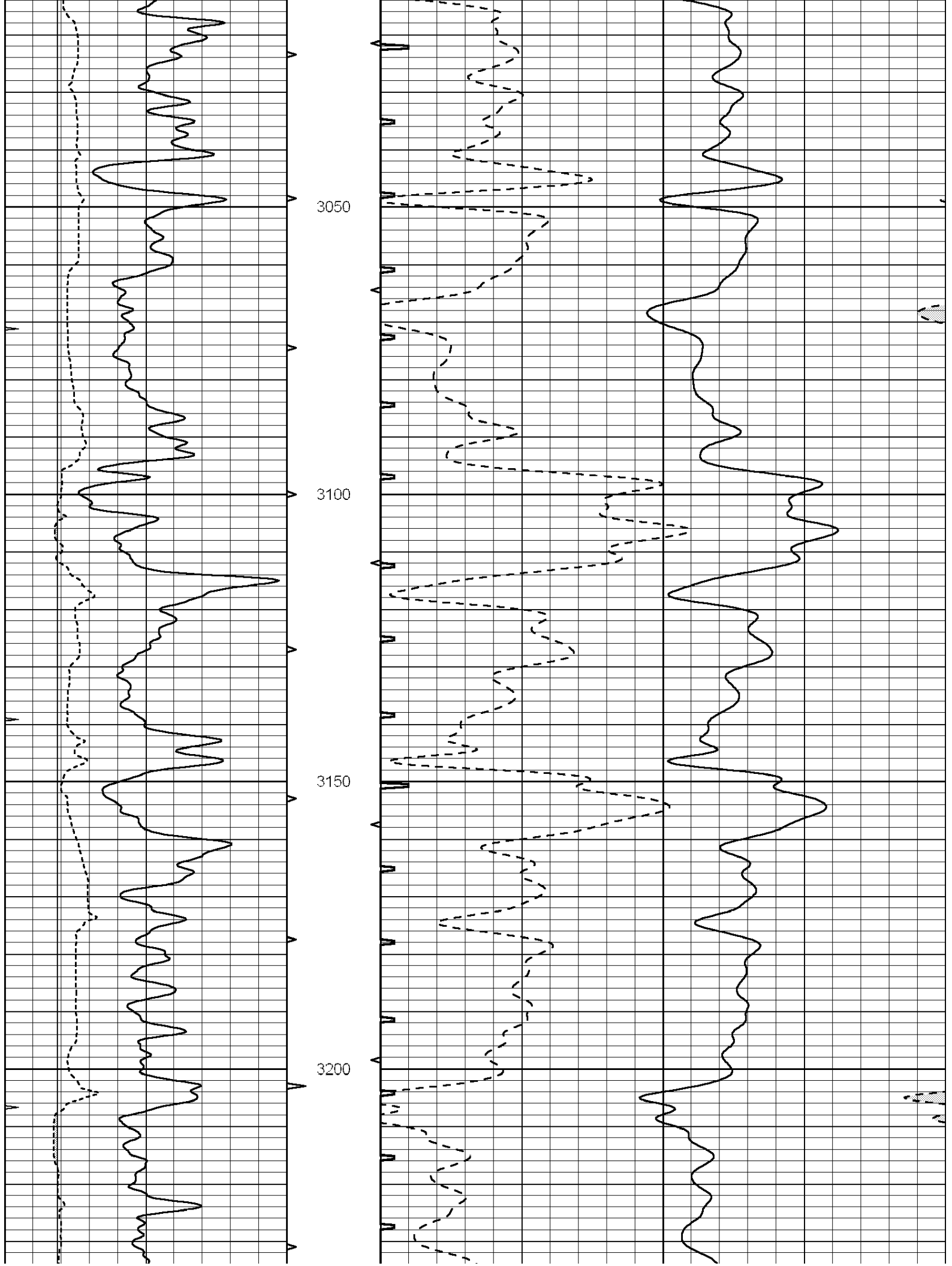


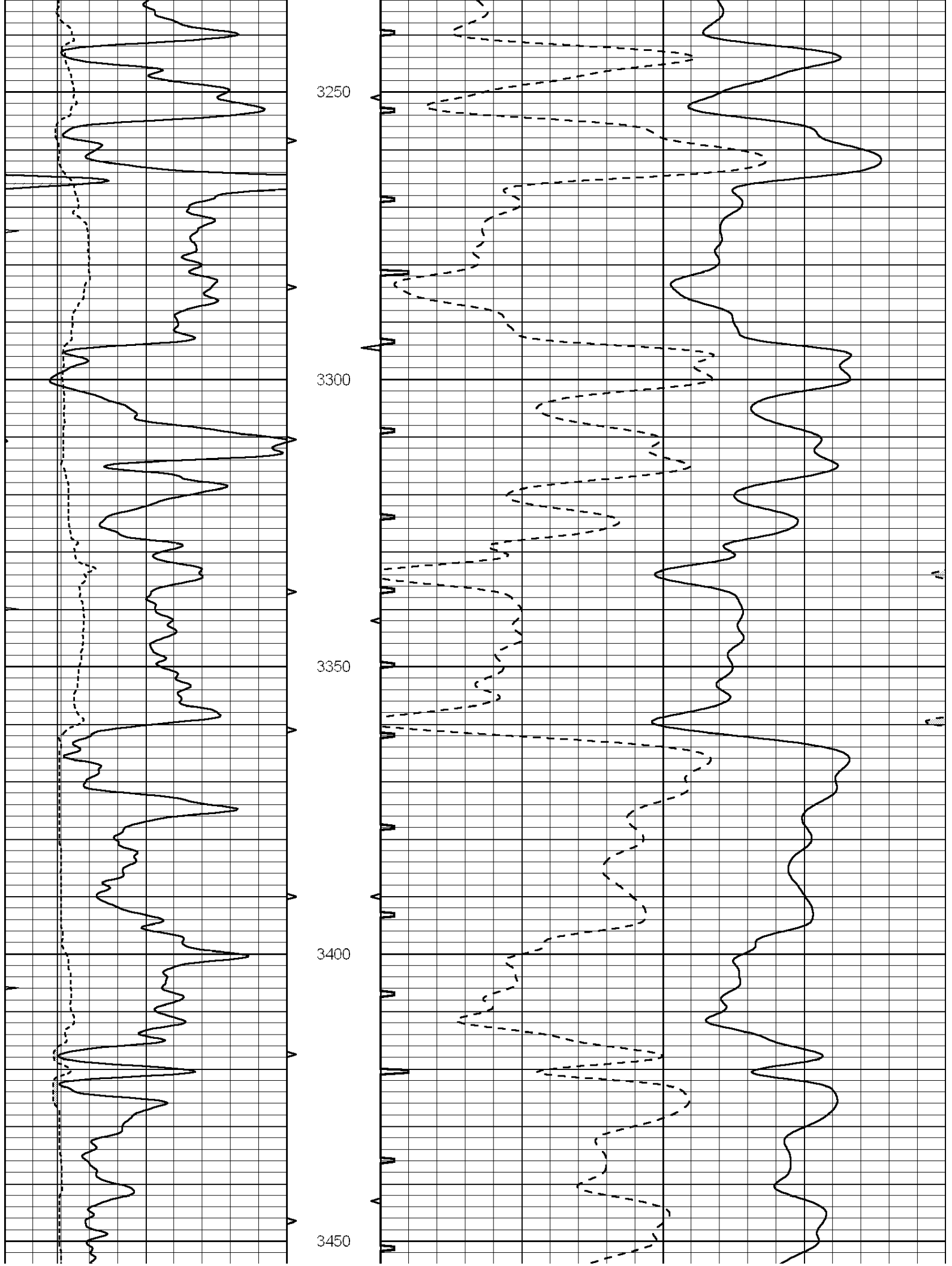


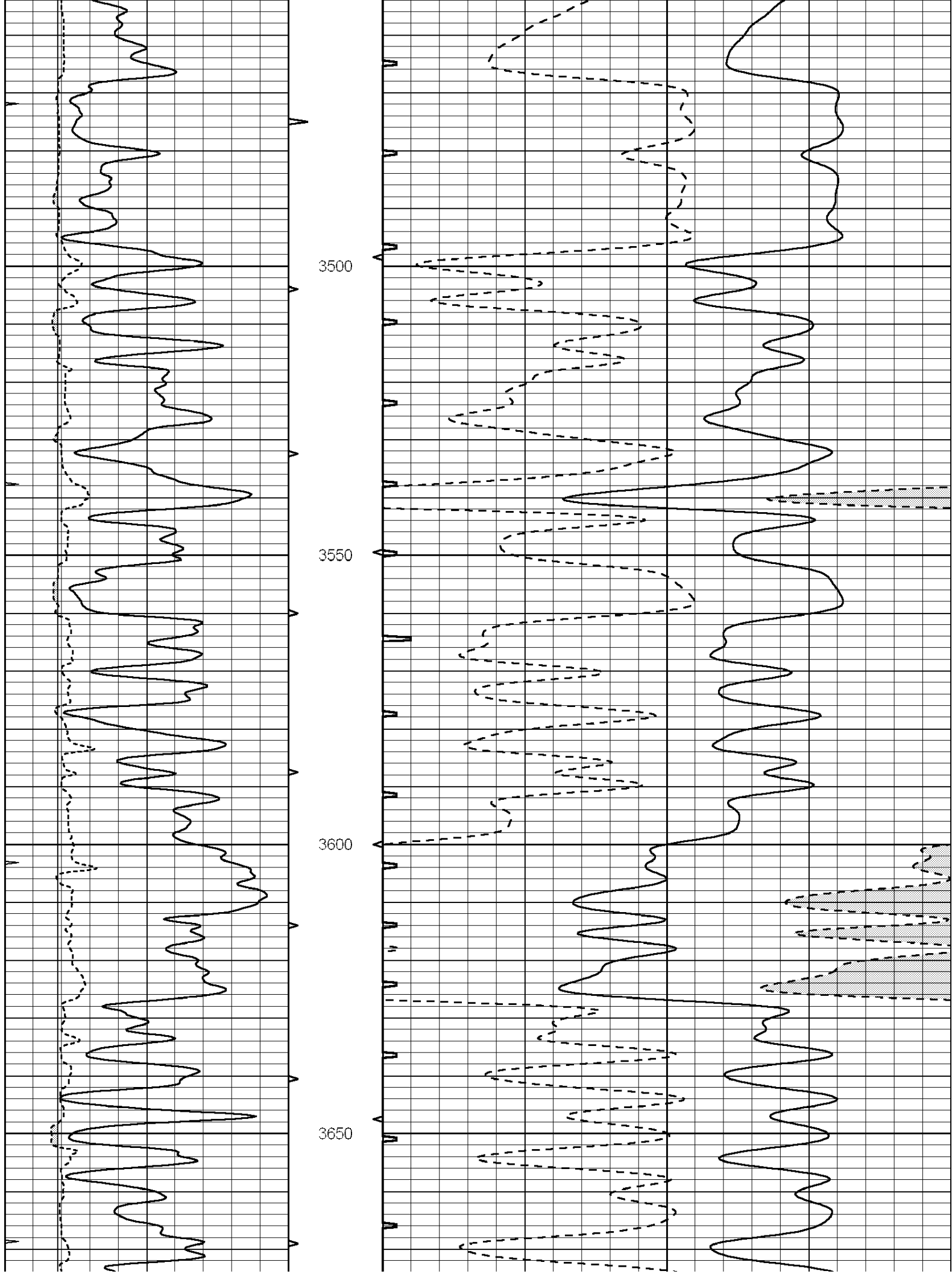


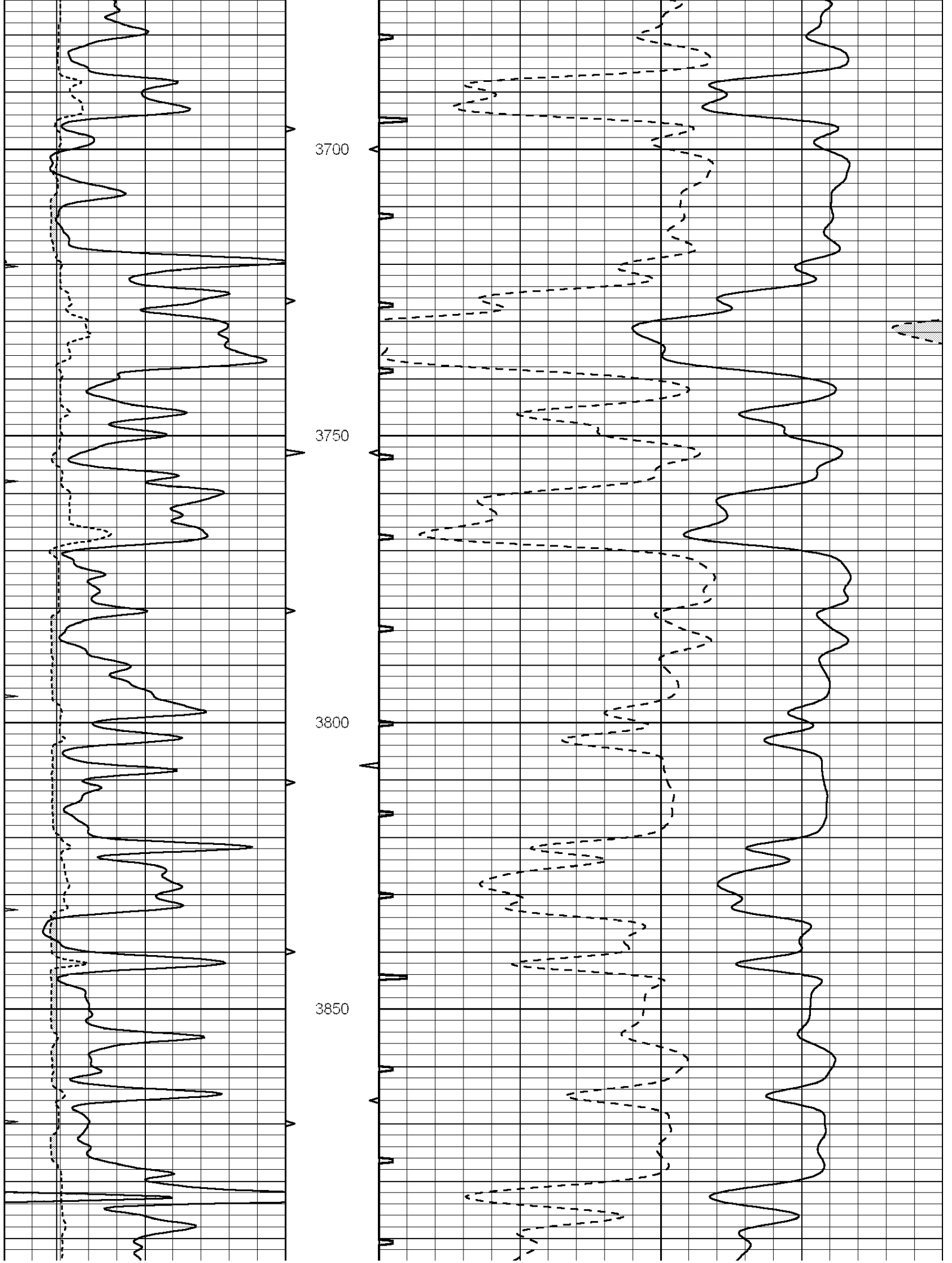


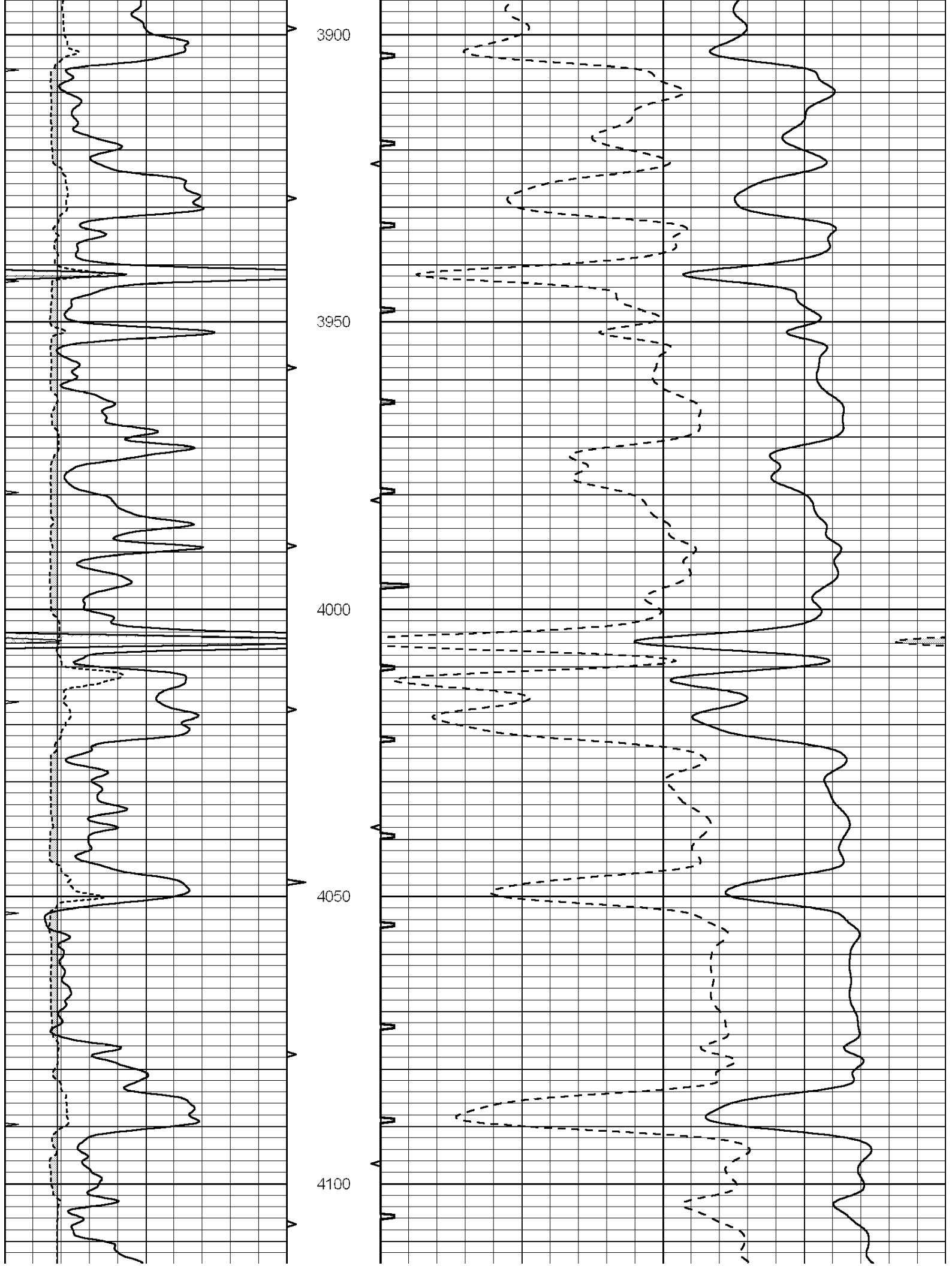


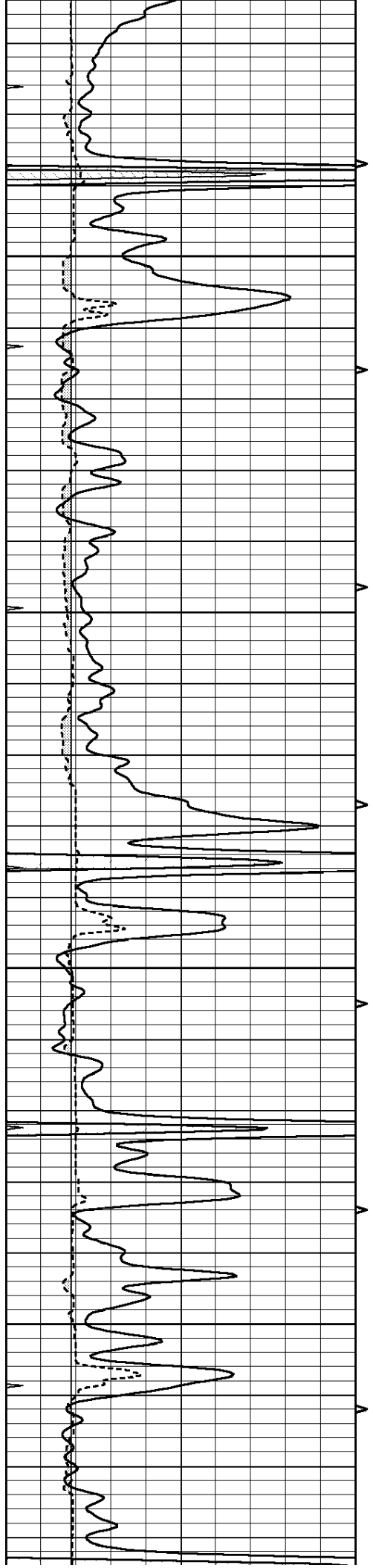










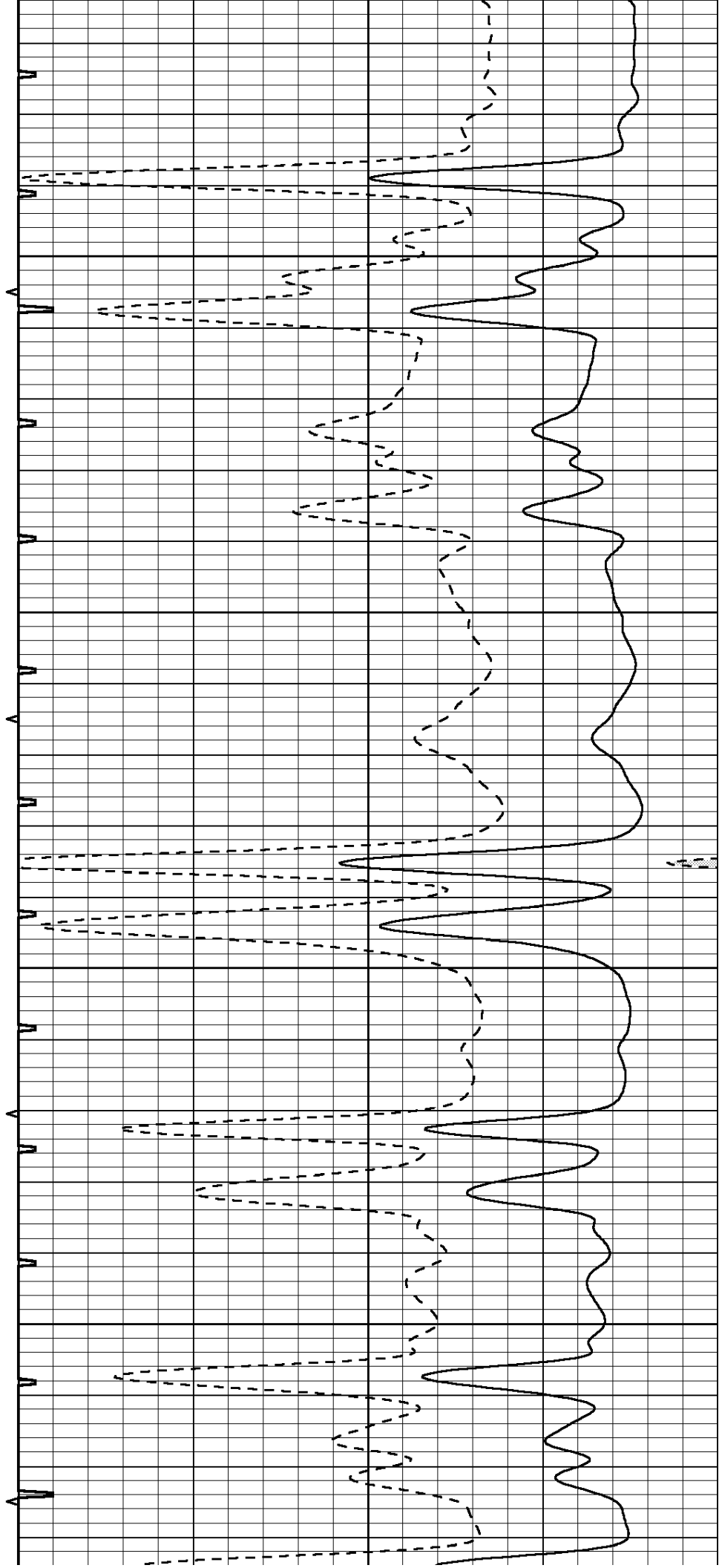


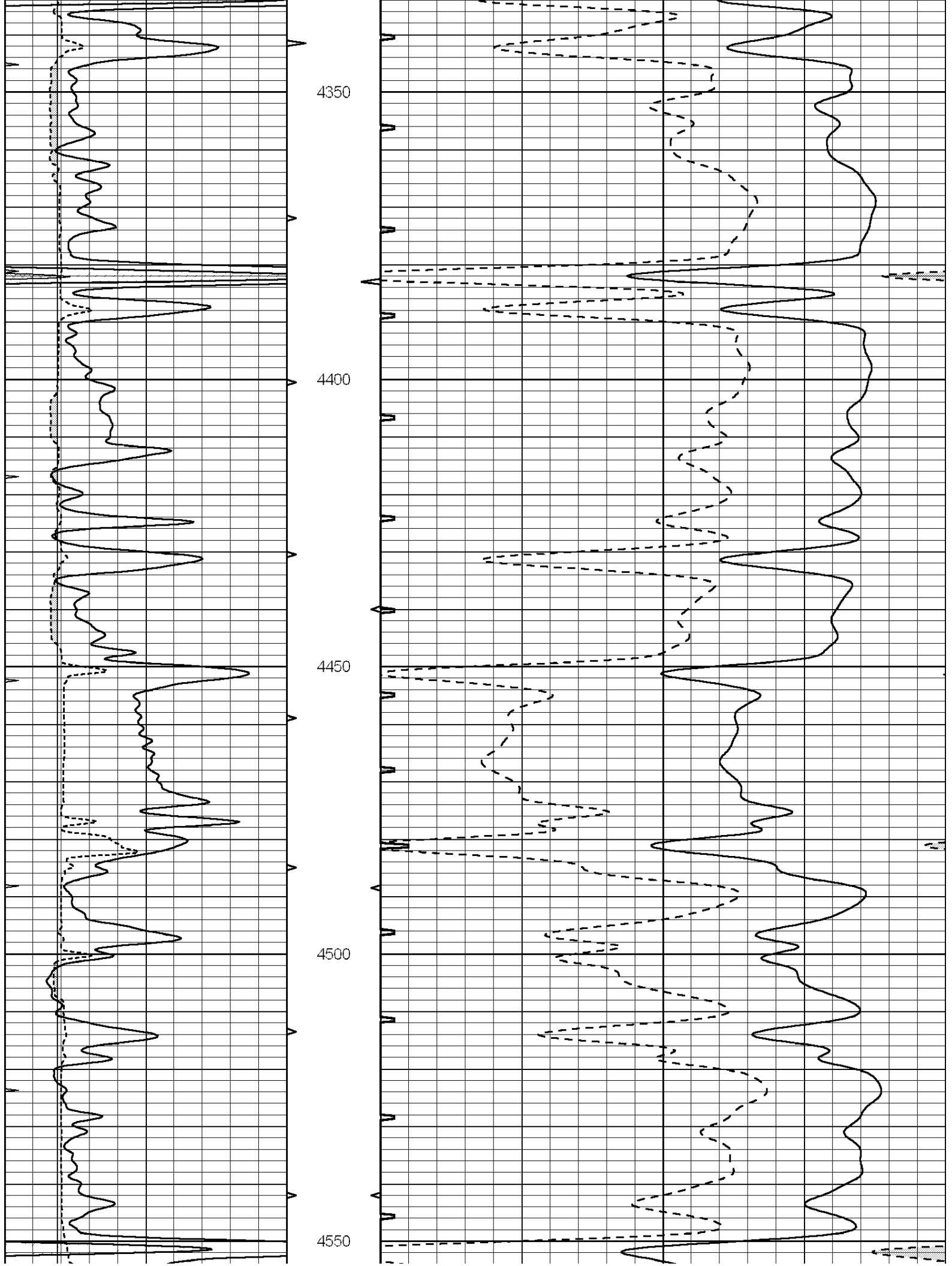
4150

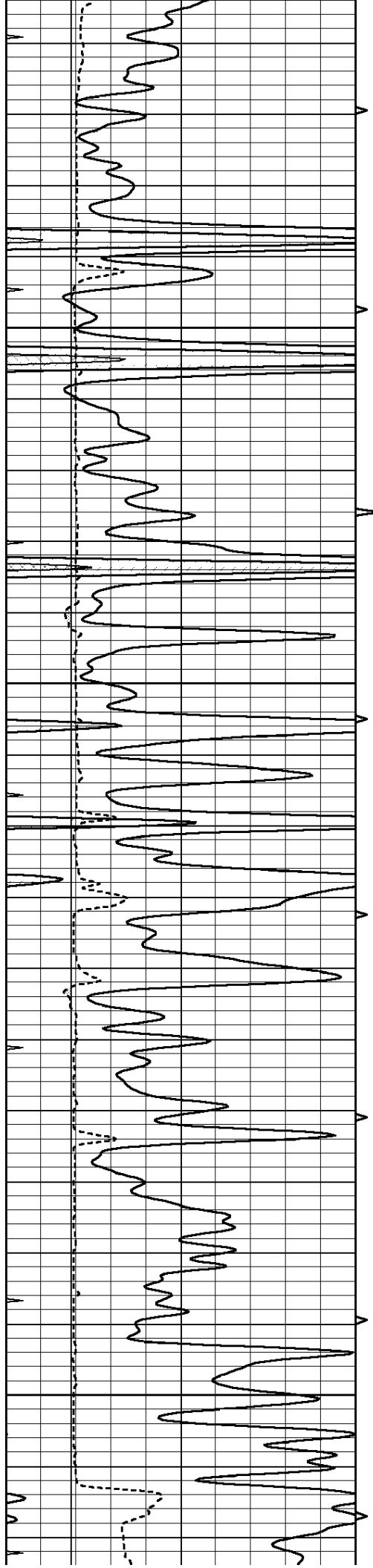
4200

4250

4300





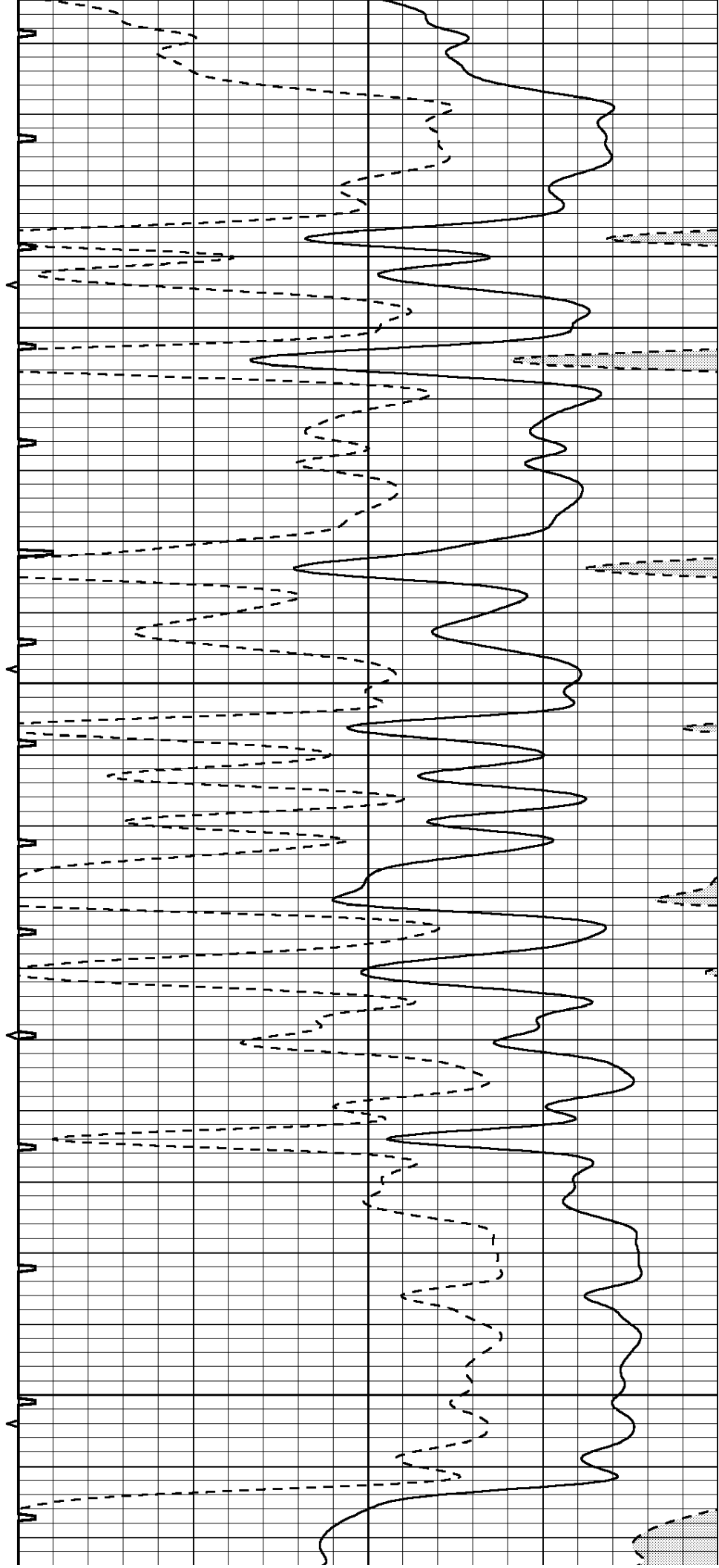


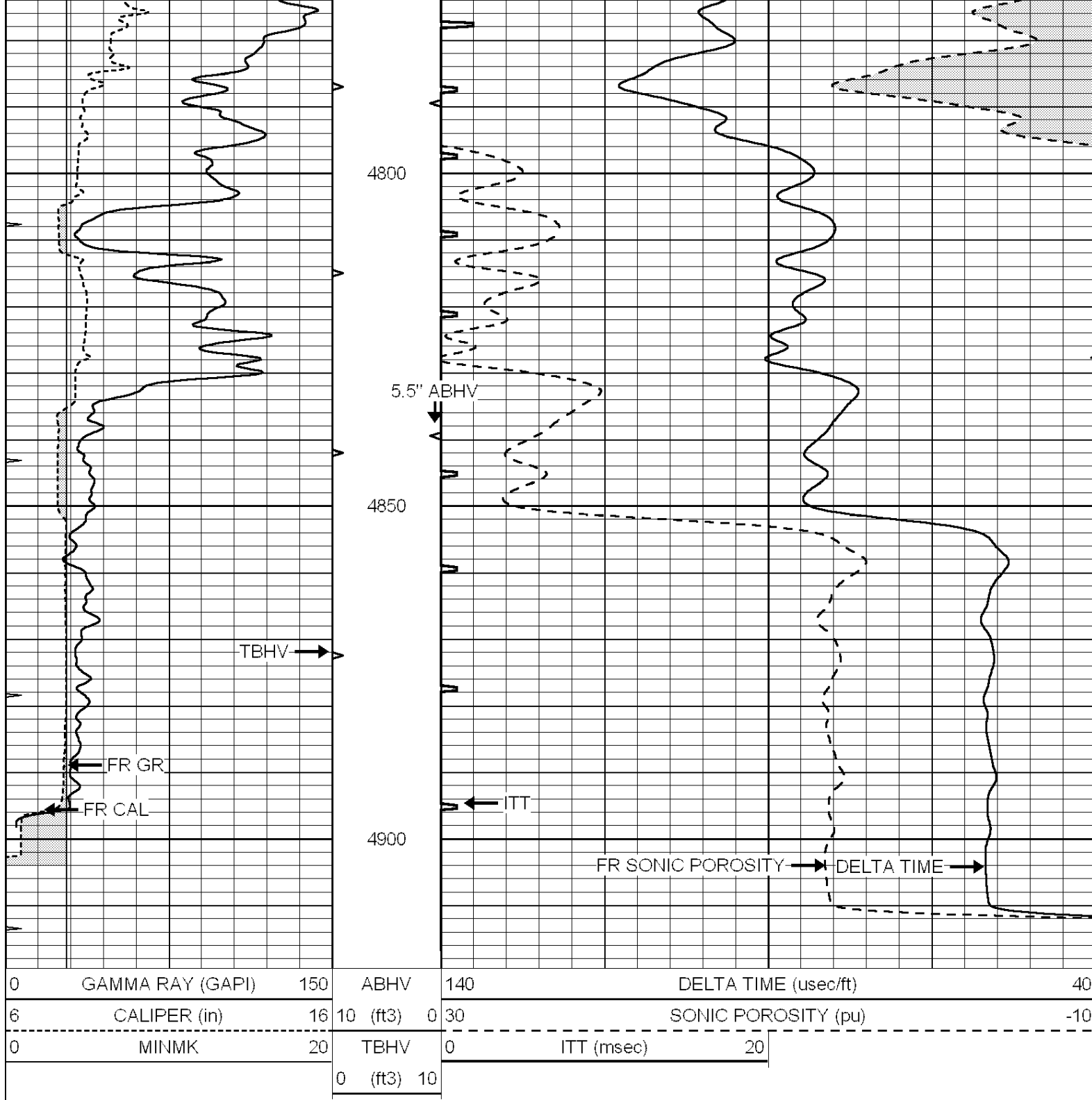
4600

4650

4700

4750





REPEAT SECTION

Database File: 26509pe.db
 Dataset Pathname: pass5.9
 Presentation Format: slt
 Dataset Creation: Fri Apr 03 16:16:57 2015 by Calc SOC 120430
 Charted by: Depth in Feet scaled 1:240

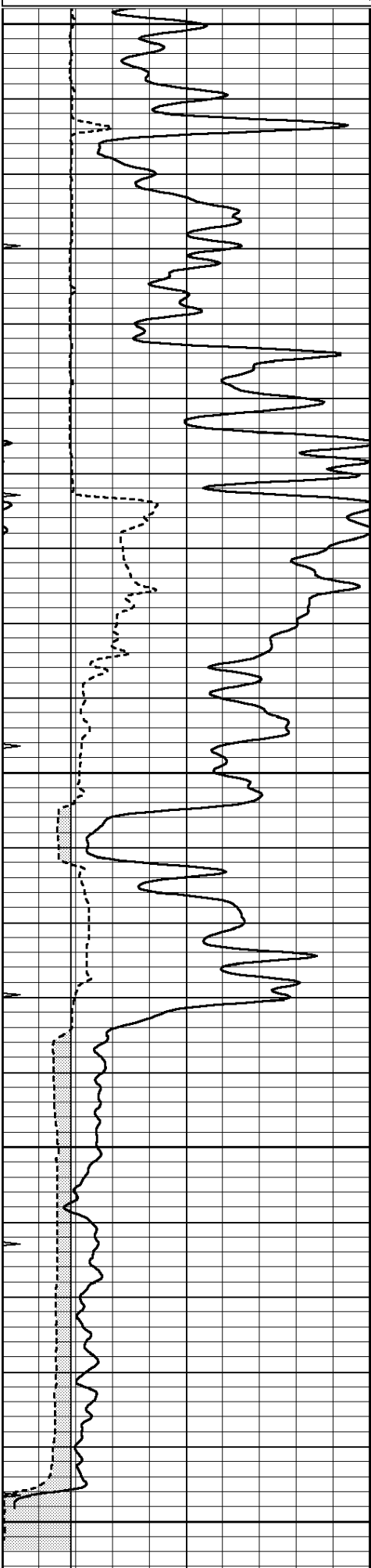
0	GAMMA RAY (GAPI)	150	ABHV	140	DELTA TIME (usec/ft)	40
6	CALIPER (in)	16	10 (ft3)	0 30	SONIC POROSITY (pu)	-10

0 MINMK 20

TBHV

0 ITT (msec) 20

0 (ft3) 10



4700

4750

4800

4850

4900

