



PIONEER

Pioneer Energy Services

**Dual Compensated
Porosity Log**

API No.	15-193-20,950-00-00	
Company	VAL ENERGY, INC.	
Well	BIGGS NO.1-2	
Field	WILDCAT	
County	THOMAS	
State	KANSAS	
Location	2294' FNL & 2272' FEL	
Sec: 2	Twp: 8S	Rge: 36W
Other Services	DIL/MEL	
Permanent Datum	GROUND LEVEL	Elevation 3286
Log Measured From	KELLY BUSHING	10 Ft. Above Perm. Datum
Drilling Measured From	KELLY BUSHING	
Elevation	K.B. 3296 D.F. 3286 G.L. 3286	

Date	4/26/2015	
Run Number	ONE	
Type Log	CNL / CDL	
Depth Driller	4860	
Depth Logger	4860	
Bottom Logged Interval	4831	
Top Logged Interval	3500	
Type Fluid In Hole	CHEMICAL	
Salinity, PPM CL	6,000	
Density	9.0	
Level	Full	
Max. Rec. Temp. F	125	
Operating Rig Time	3 HOURS	
Equipment -- Location	15 Hays	
Recorded By	C. DESAIRE	
Witnessed By	HARLEY SAYLES	

Borehole Record				Casing Record			
Run No	Bit	From	To	Size	Wgt.	From	To
One	12.25	00	222	8.625	23#	00	222
Two	7.875	222	TD				

<<< Fold Here >>>

All interpretations are opinions based on inferences from electrical or other measurements and we cannot and do not guarantee the accuracy or correctness of any interpretation, and we shall not, except in the case of gross or willful negligence on our part, be liable or responsible for any loss, costs, damages, or expenses incurred or sustained by anyone resulting from any interpretation made by any of our officers, agents or employees. These interpretations are also subject to our general terms and conditions set out in our current Price Schedule.

Comments

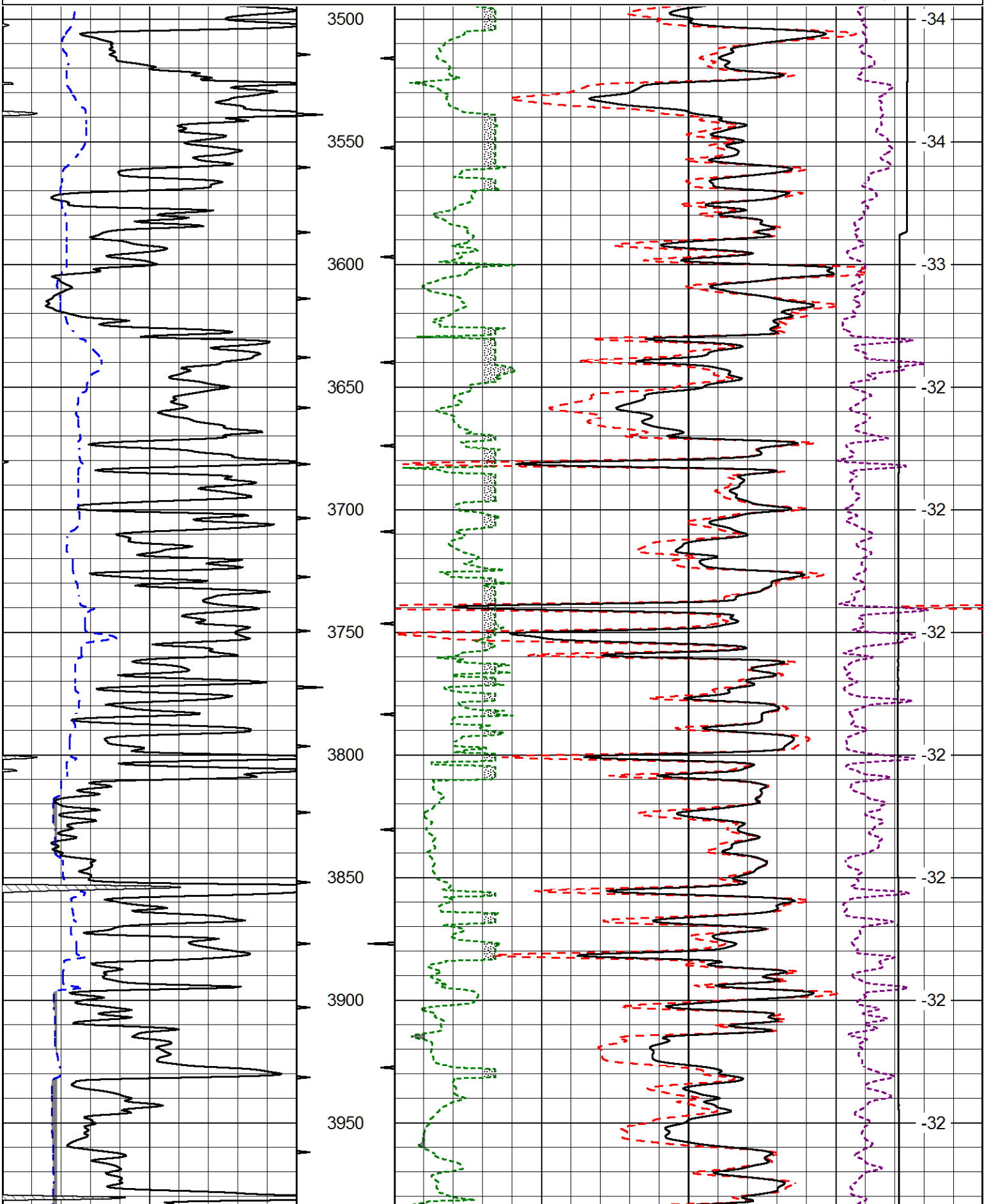
Thank you for using Pioneer Energy Services
 785.625.3858

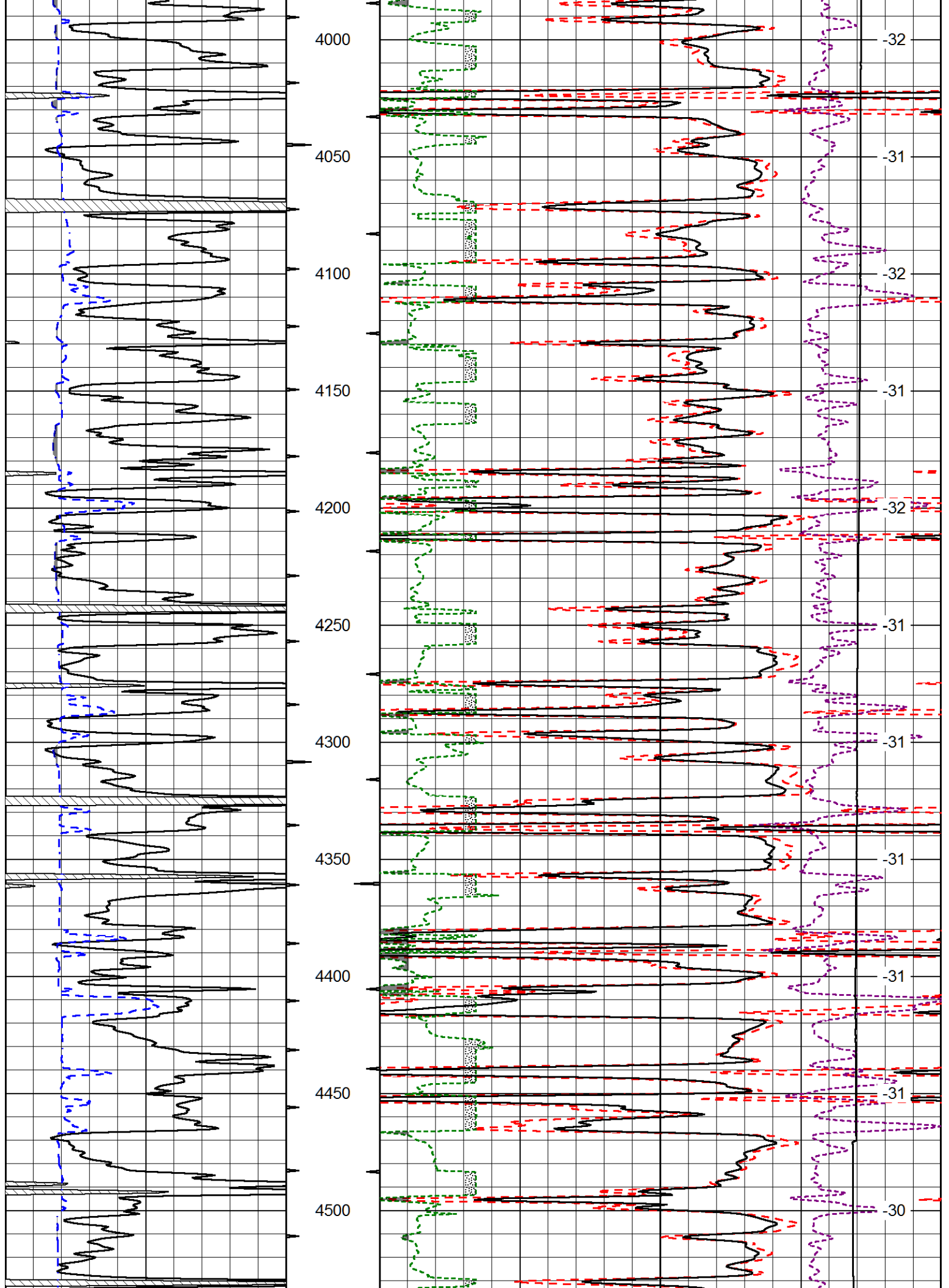
 LEVANT KS, 1/2 N FROM I-70 TO HWY 24,
 6 W TO 5 RD, 2 N TO S RD, S INTO

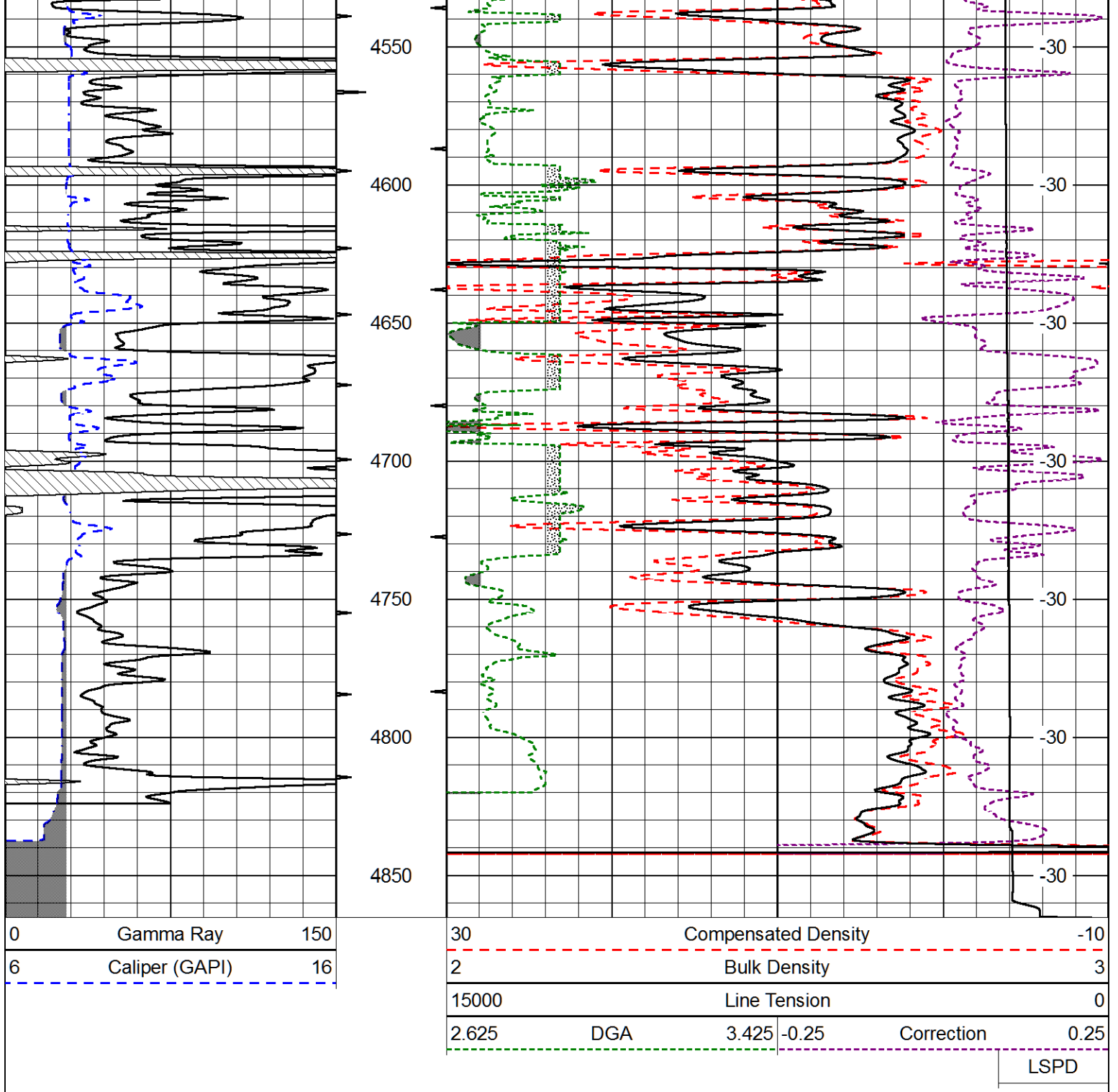
Database File	valhd.db
Dataset Pathname	DIL/valstk
Presentation Format	cdl
Dataset Creation	Sun Apr 26 19:08:40 2015
Charted by	Depth in Feet scaled 1:600

0	Gamma Ray	150
6	Caliper (GAPI)	16

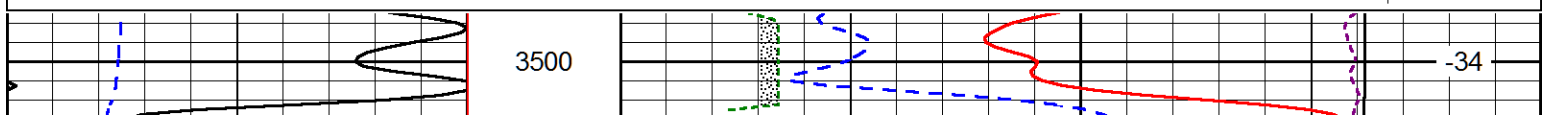
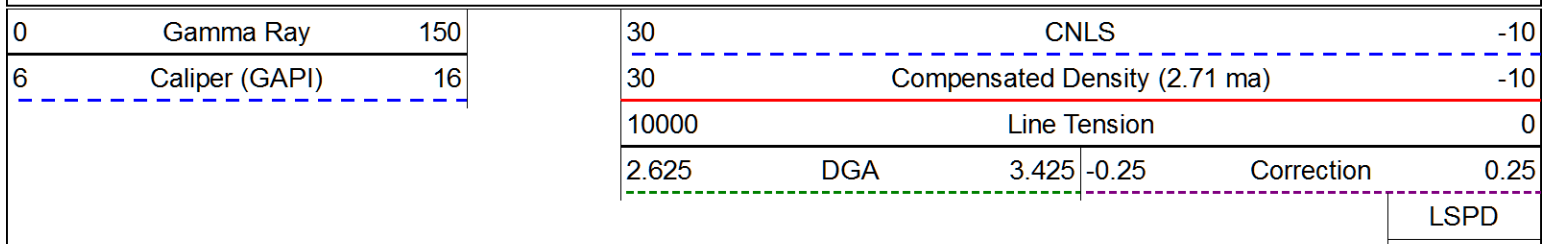
30	Compensated Density		-10
2	Bulk Density		3
15000	Line Tension		0
2.625	DGA	3.425	-0.25
Correction			0.25
LSPD			

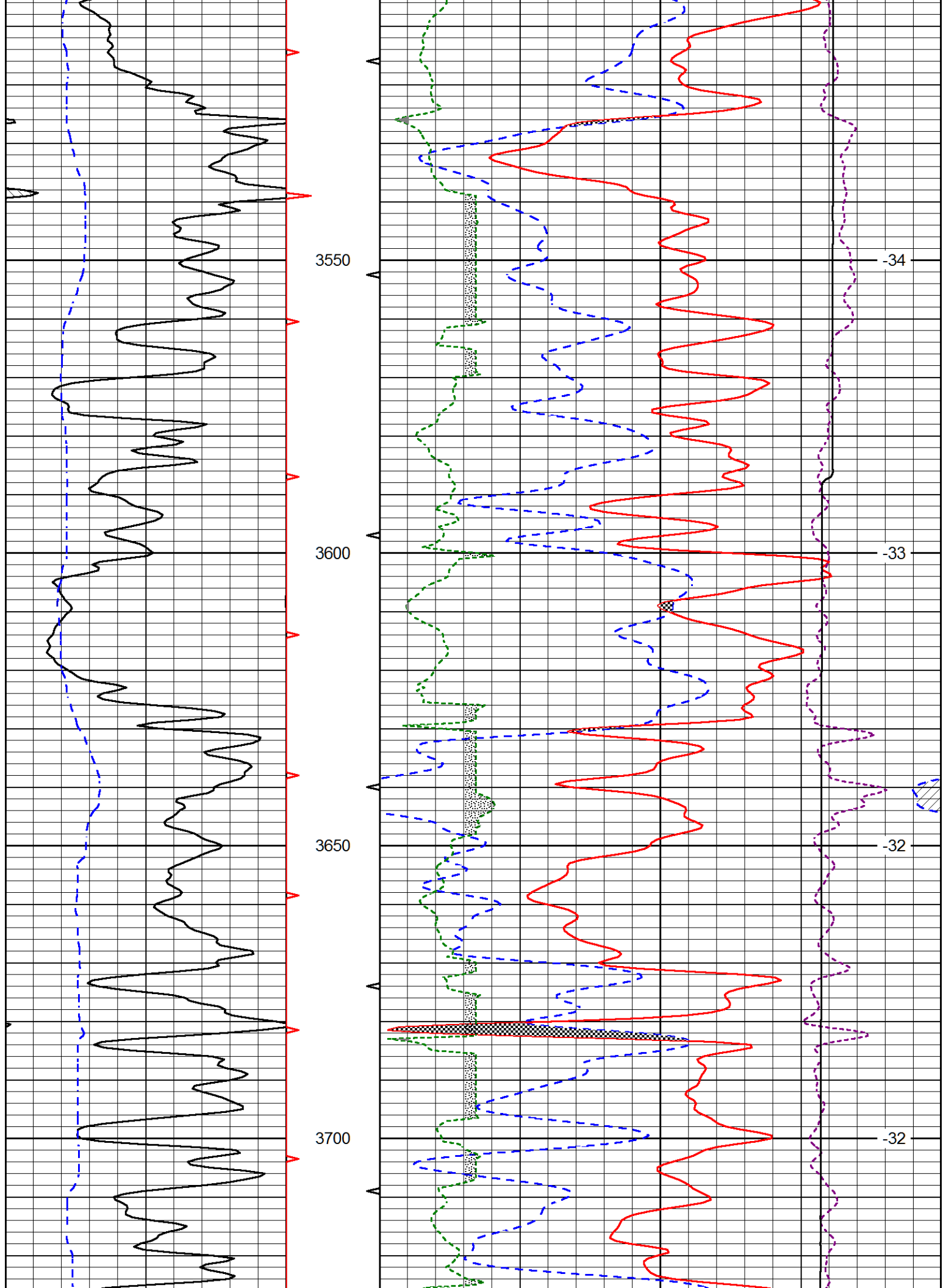


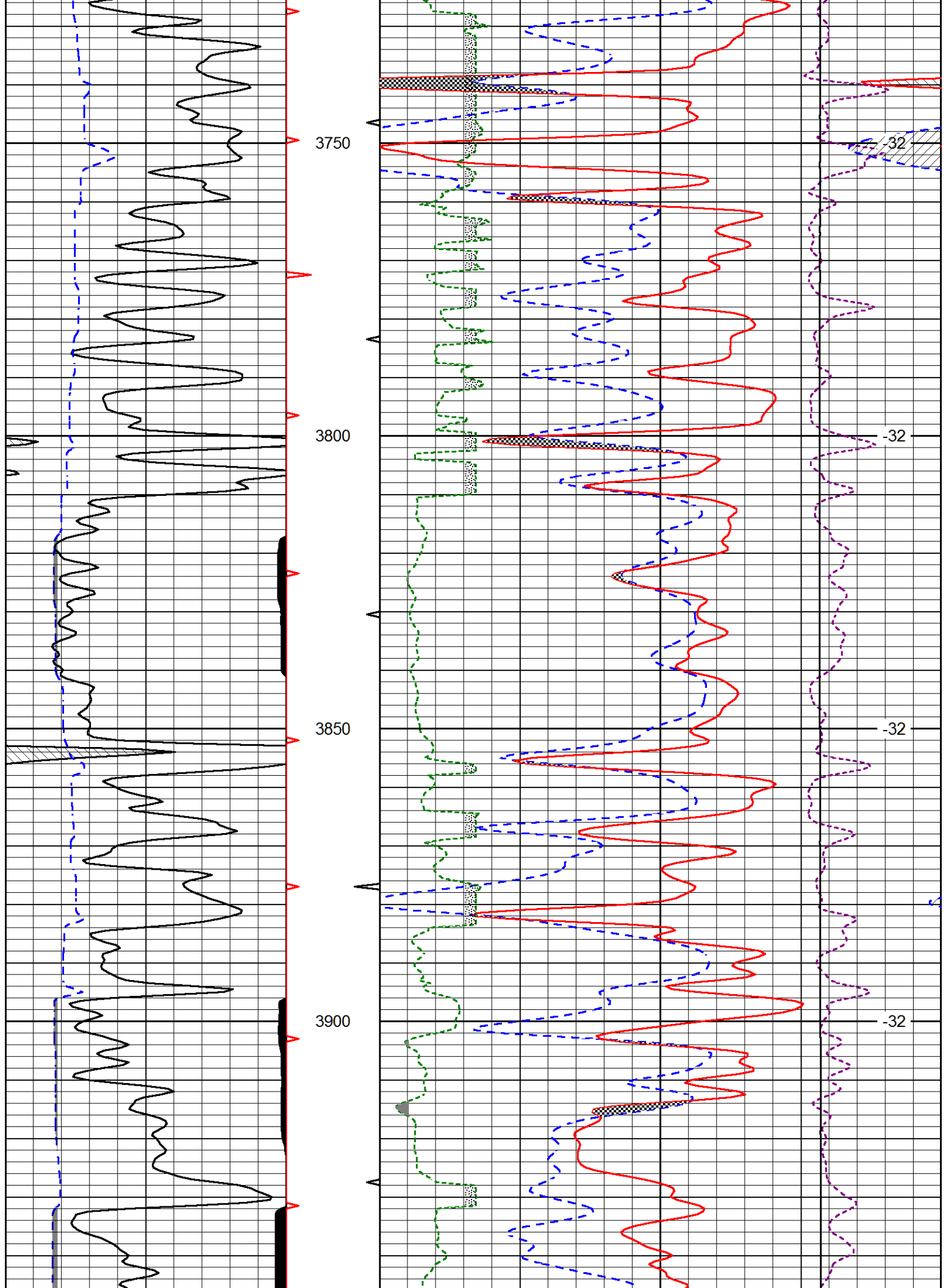


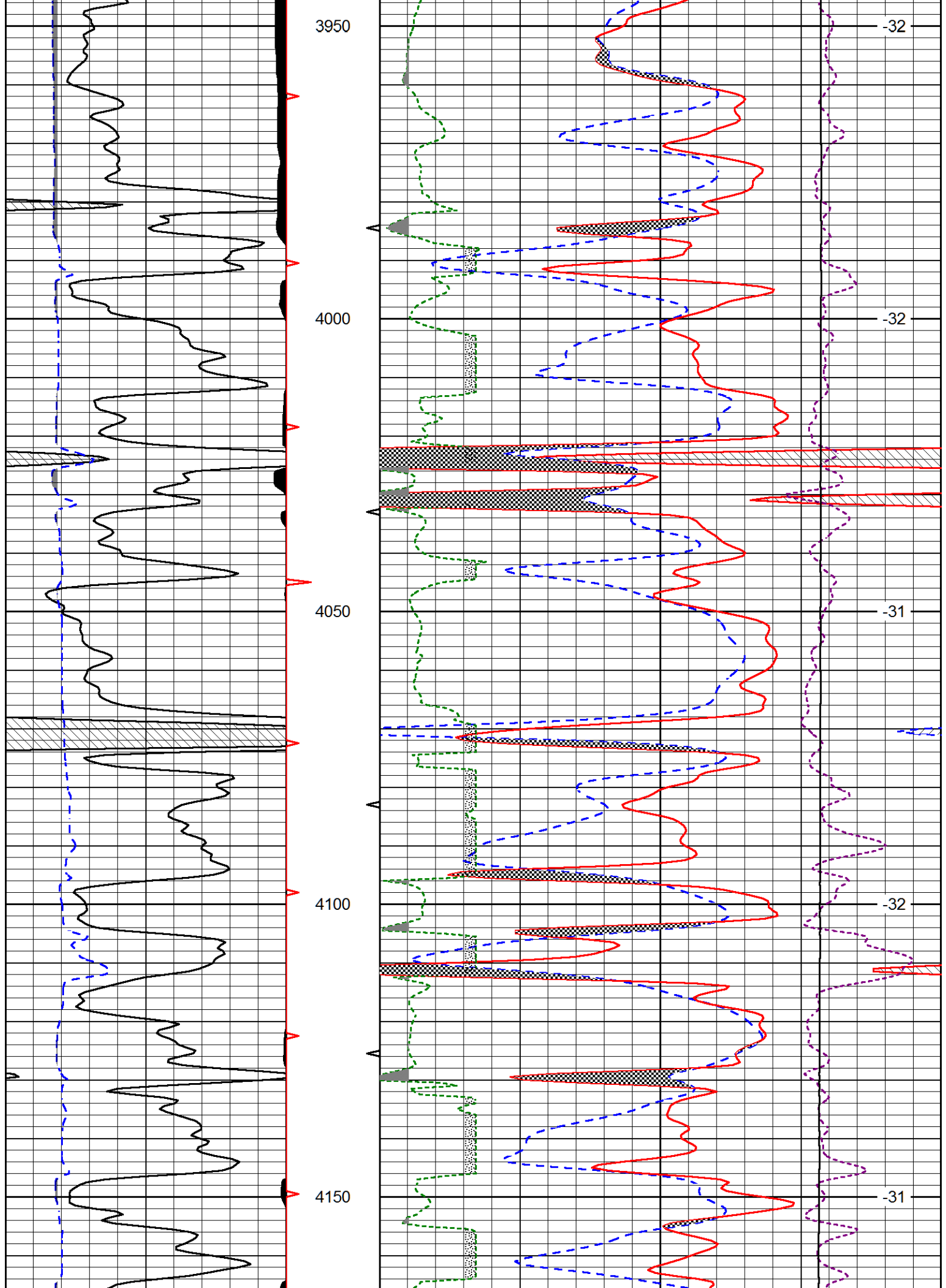


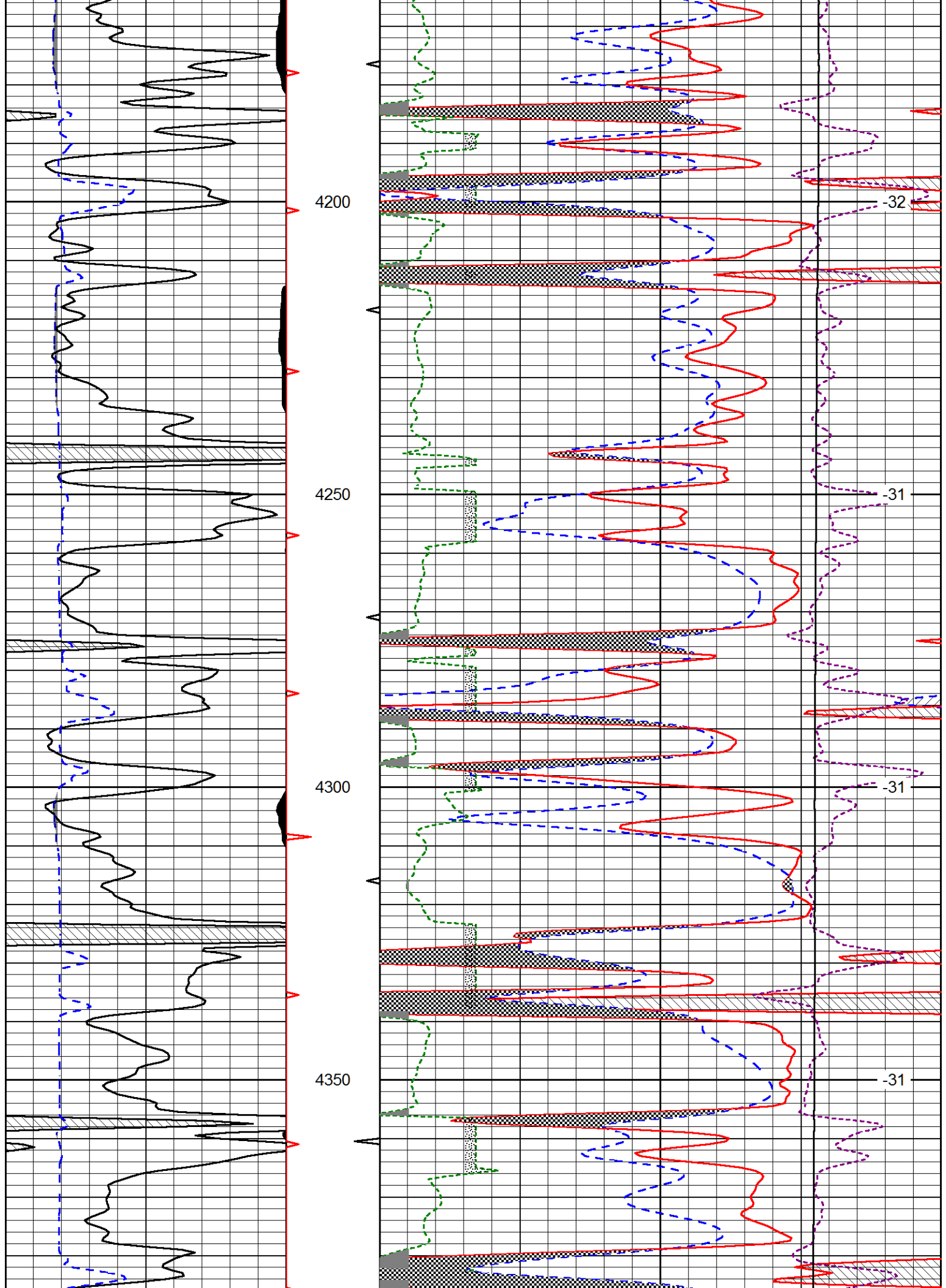
Database File valhd.db
 Dataset Pathname DIL/valstk
 Presentation Format cndlspec
 Dataset Creation Sun Apr 26 19:08:40 2015
 Charted by Depth in Feet scaled 1:240

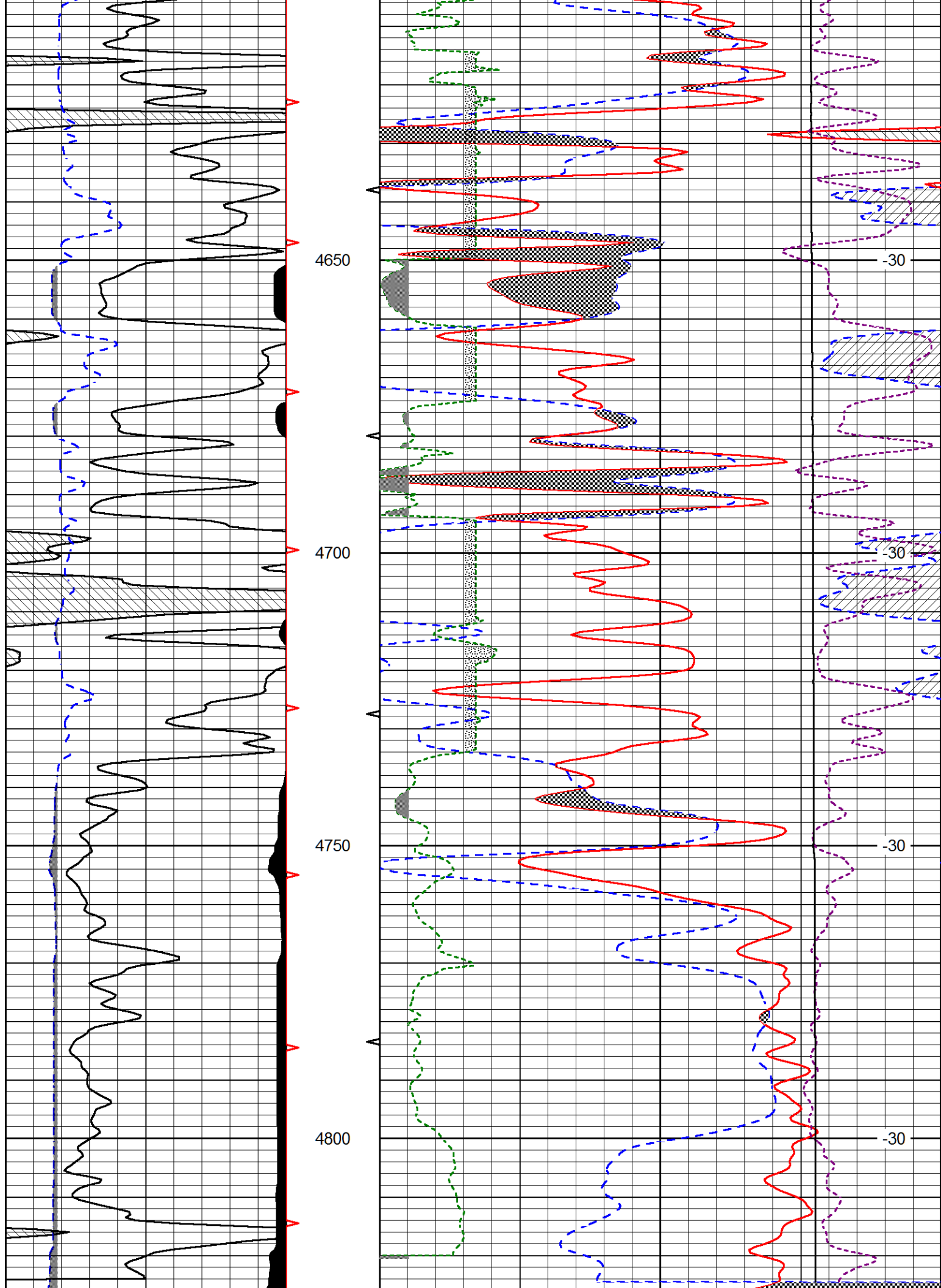


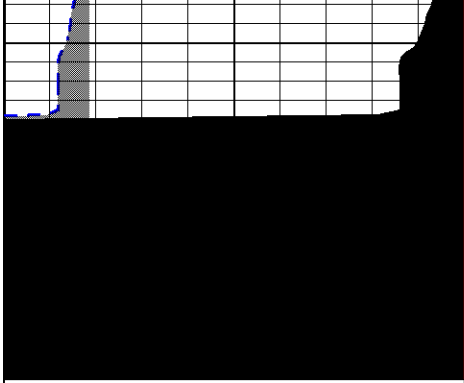




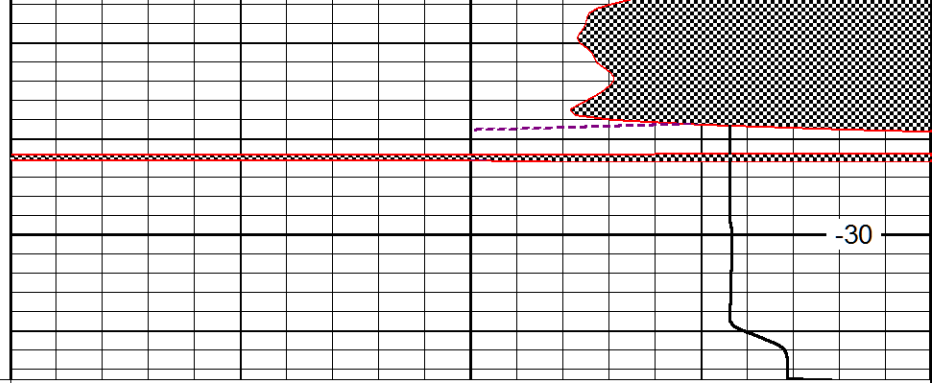








4850



0	Gamma Ray	150
6	Caliper (GAPI)	16

30	CNLS		-10
30	Compensated Density (2.71 ma)		-10
10000	Line Tension		0
2.625	DGA	3.425	-0.25
			Correction
			0.25
			LSPD