



Pioneer Energy Services

Microresistivity Log

API No.	15-193-20,950-00-00	
Company	VAL ENERGY, INC.	
Well	BIGGS NO.1-2	
Field	WILD CAT	
County	THOMAS	State
		KANSAS
Location	2294' FNL & 2272' FEL	
Sec: 2	Twp: 8S	Rge: 36W
Permanent Datum	GROUND LEVEL	Elevation 3286
Log Measured From	KELLY BUSHING	10 Ft. Above Perm. Datum
Drilling Measured From	KELLY BUSHING	
		Other Services CNL/CDL DIL
		Elevation K.B. 3296 D.F. G.L. 3286

Date	4/26/2015
Run Number	ONE
Depth Driller	4860
Depth Logger	4860
Bottom Logged Interval	4859
Top Log Interval	3500
Casing Driller	8.625 @ 222
Casing Logger	222
Bit Size	7.875
Type Fluid in Hole	CHEMICAL
Salinity, ppm CL	6,000
Density / Viscosity	9.0 57
pH / Fluid Loss	10.5 8.0
Source of Sample	Flowline
Rm @ Meas. Temp	.55 @ 62
Rmf @ Meas. Temp	.41 @ 62
Rmc @ Meas. Temp	.74 @ 62
Source of Rmf / Rmc	Charts
Rm @ BHT	.27 @ 125
Operating Rig Time	3 HOURS
Max Rec. Temp. F	125
Equipment Number	15
Location	HAYS
Recorded By	C. DESAIRE
Witnessed By	HARLEY SAYLES

<<< Fold Here >>>

All interpretations are opinions based on inferences from electrical or other measurements and we cannot and do not guarantee the accuracy or correctness of any interpretation, and we shall not, except in the case of gross or willful negligence on our part, be liable or responsible for any loss, costs, damages, or expenses incurred or sustained by anyone resulting from any interpretation made by any of our officers, agents or employees. These interpretations are also subject to our general terms and conditions set out in our current Price Schedule.

Comments

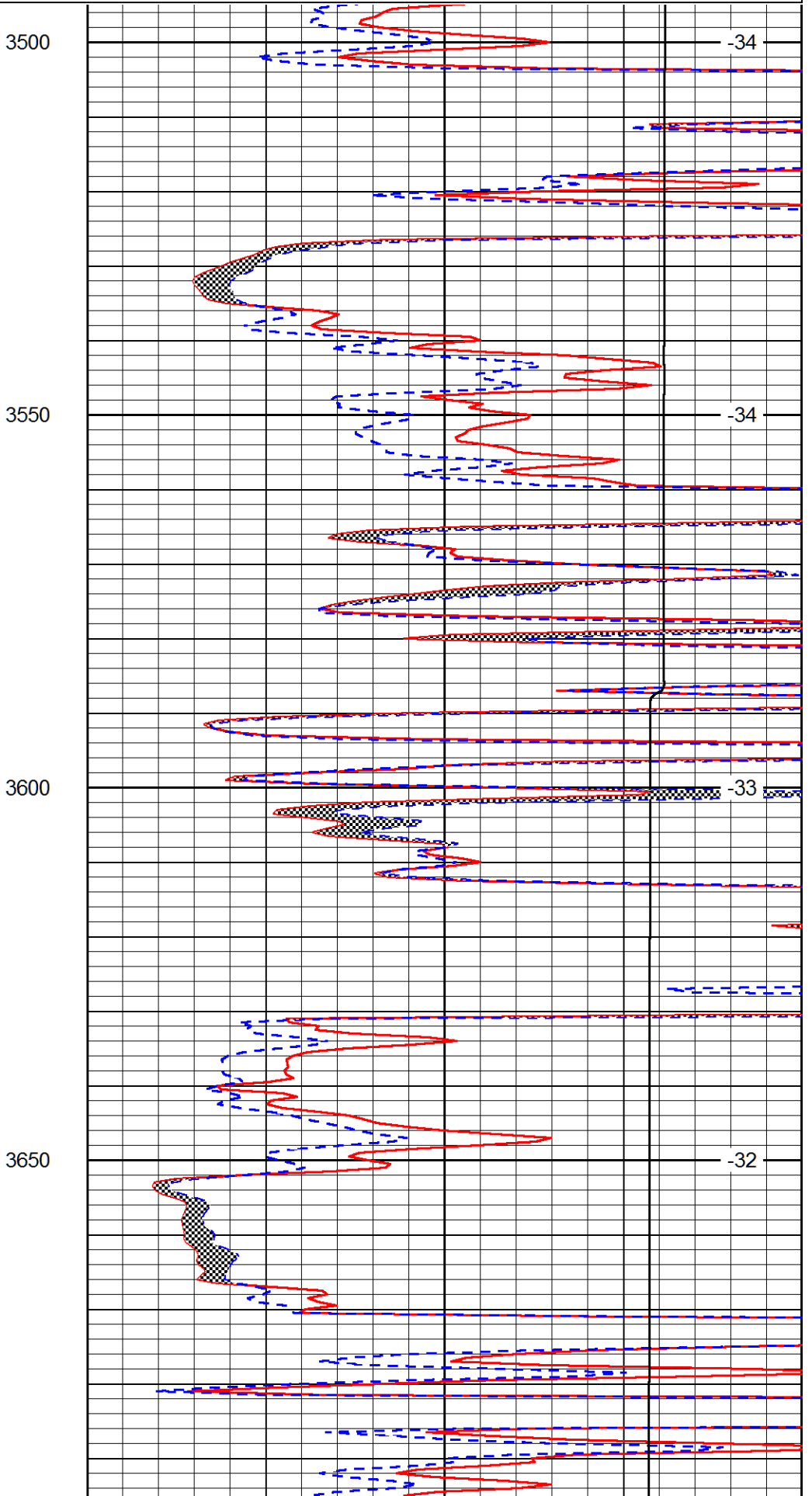
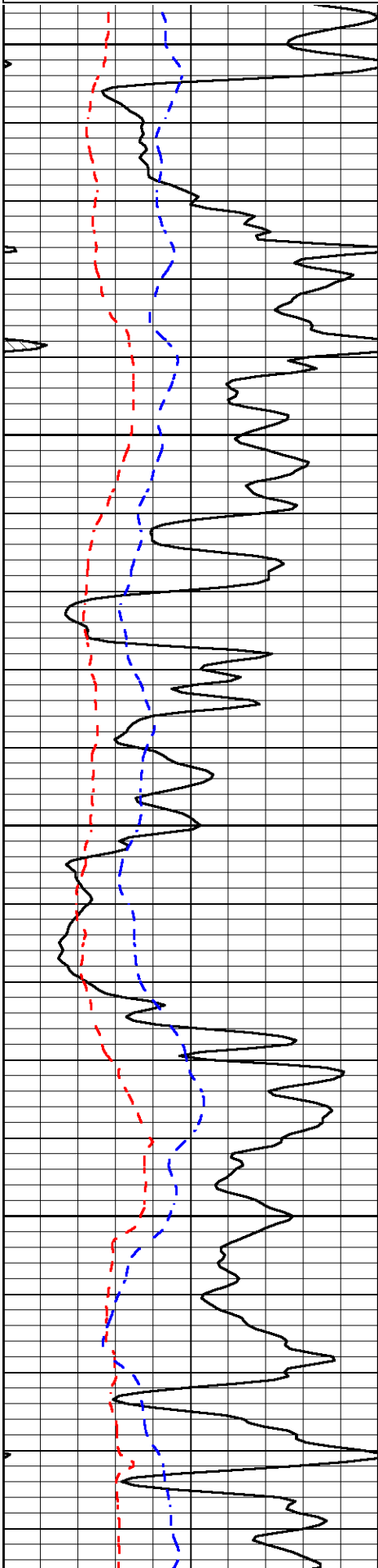
Thank you for using Pioneer Energy Services
785.625.3858

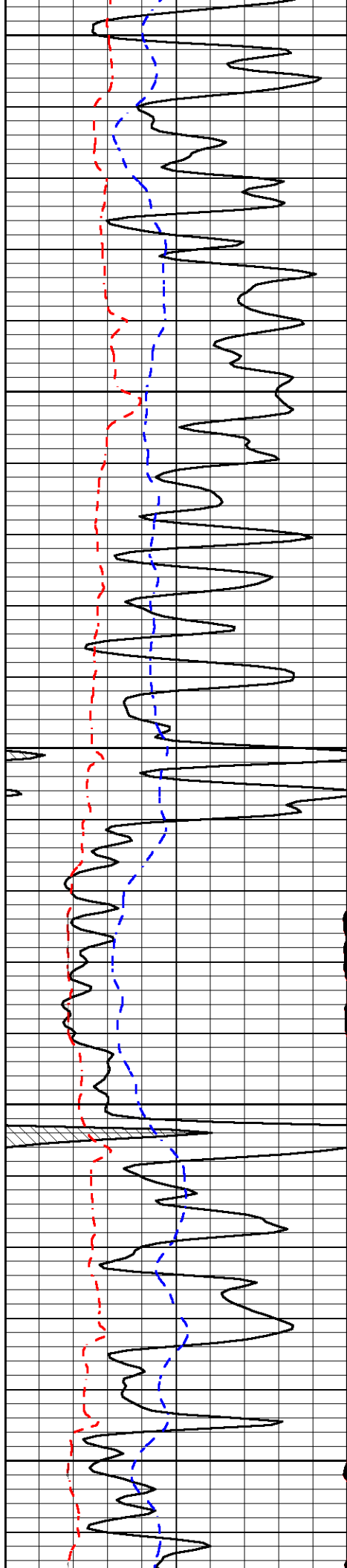
LEVANT KS, 1/2 N FROM I-70 TO HWY 24,
6 W TO 5 RD, 2 N TO S RD, S INTO

Database File valhd.db
 Dataset Pathname DIL/valstk
 Presentation Format micro
 Dataset Creation Sun Apr 26 19:08:40 2015
 Charted by Depth in Feet scaled 1:240

0	Gamma Ray	150
6	MCAL (GAPI)	16
2.875	Mud Cake (GAPI)	7.875
-200	SP (mV)	0

0	Micro Inverse 1 X 1	40
0	Micro Normal 2"	40
10000	Line Weight	0
		LSPD





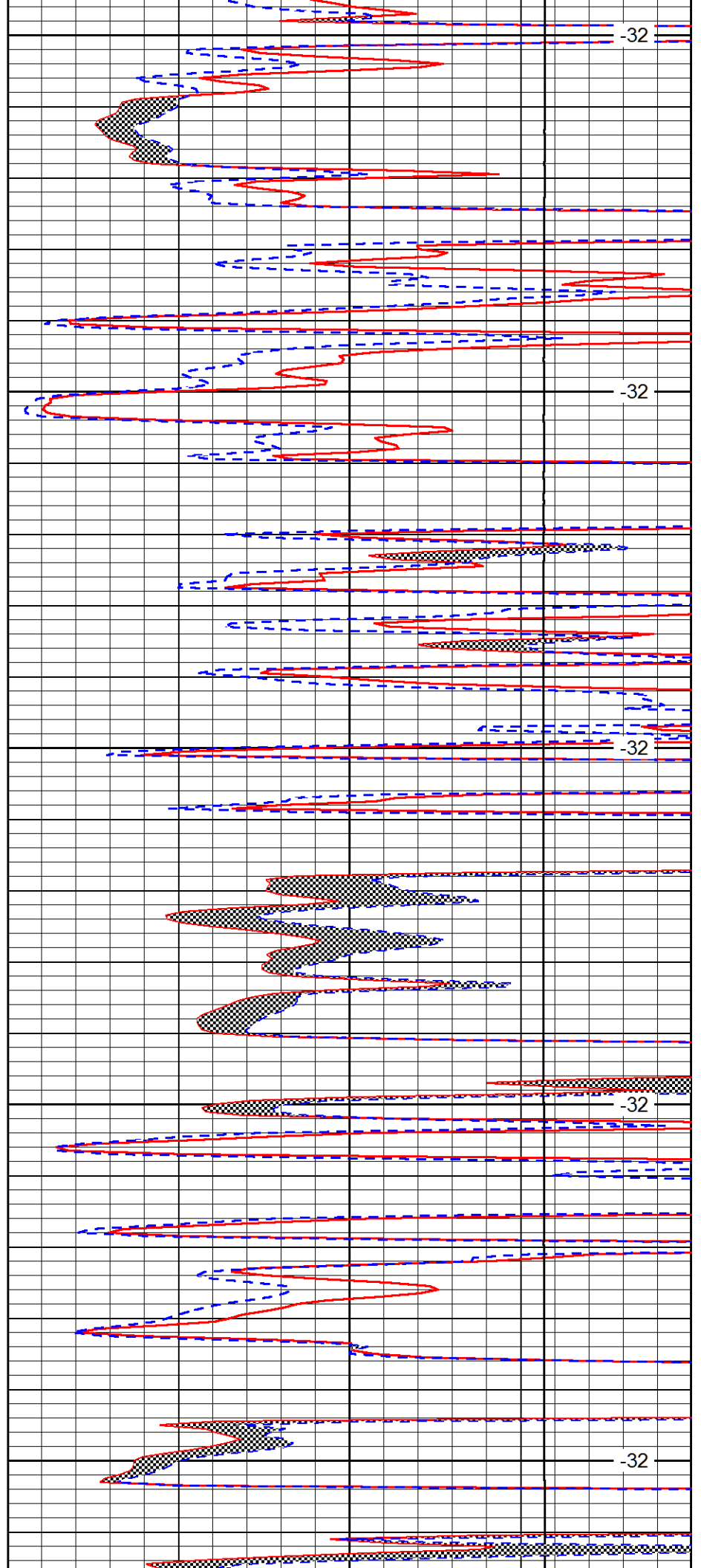
3700

3750

3800

3850

3900



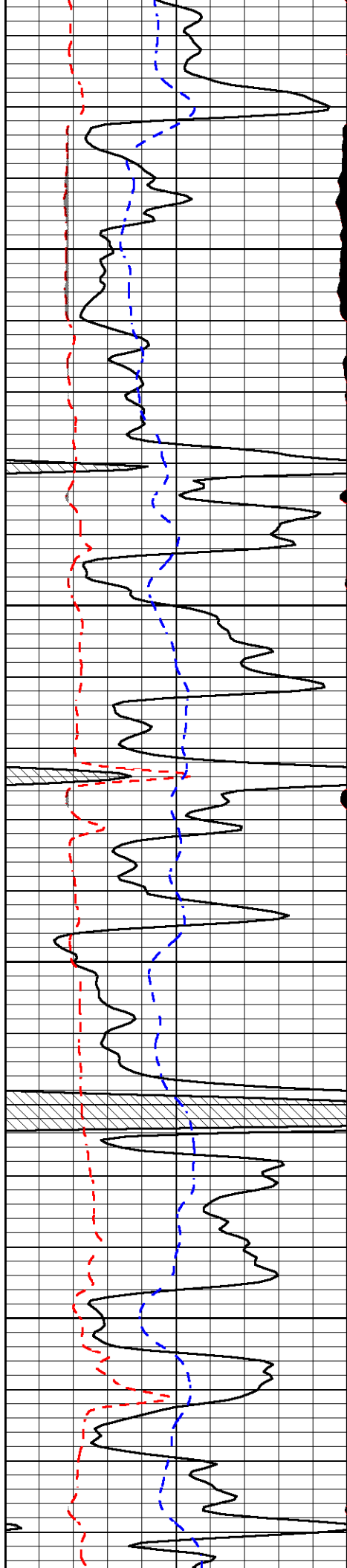
-32

-32

-32

-32

-32

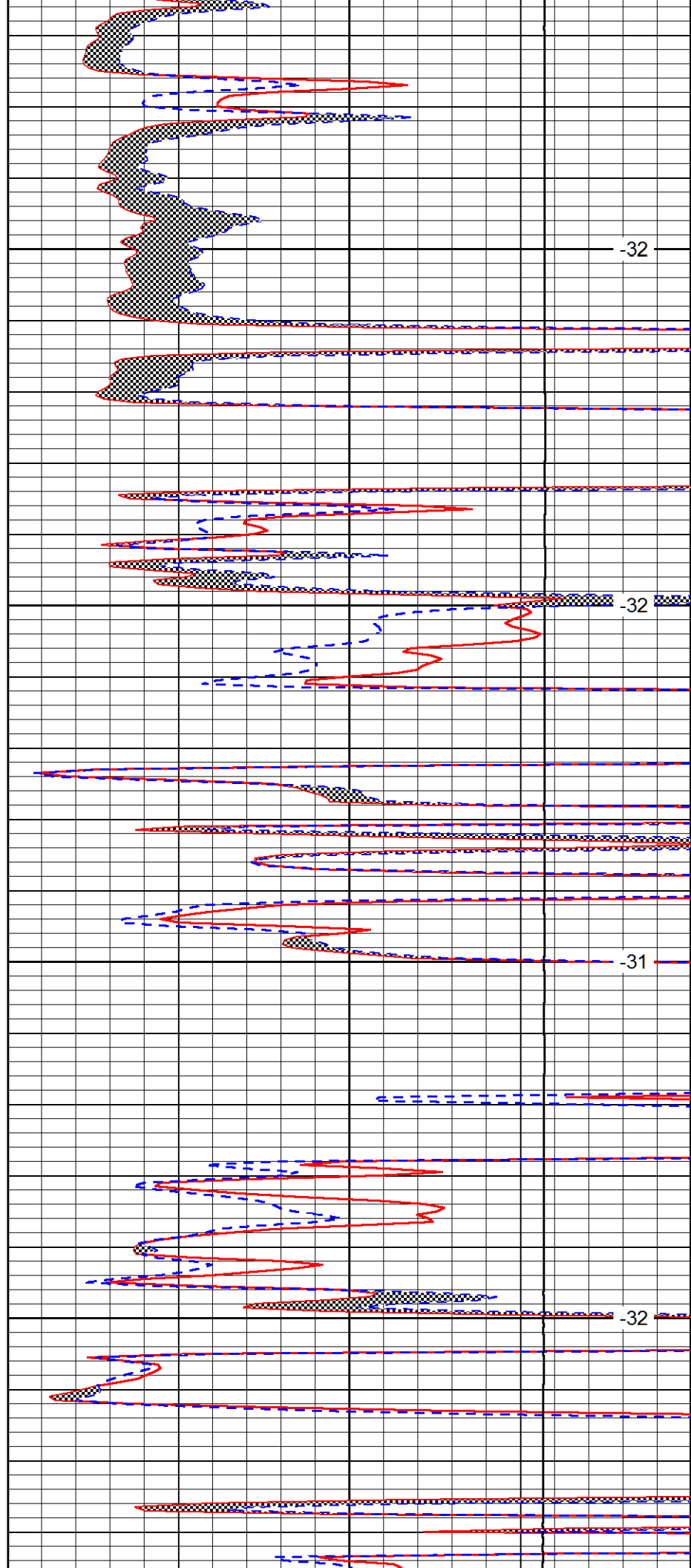


3950

4000

4050

4100

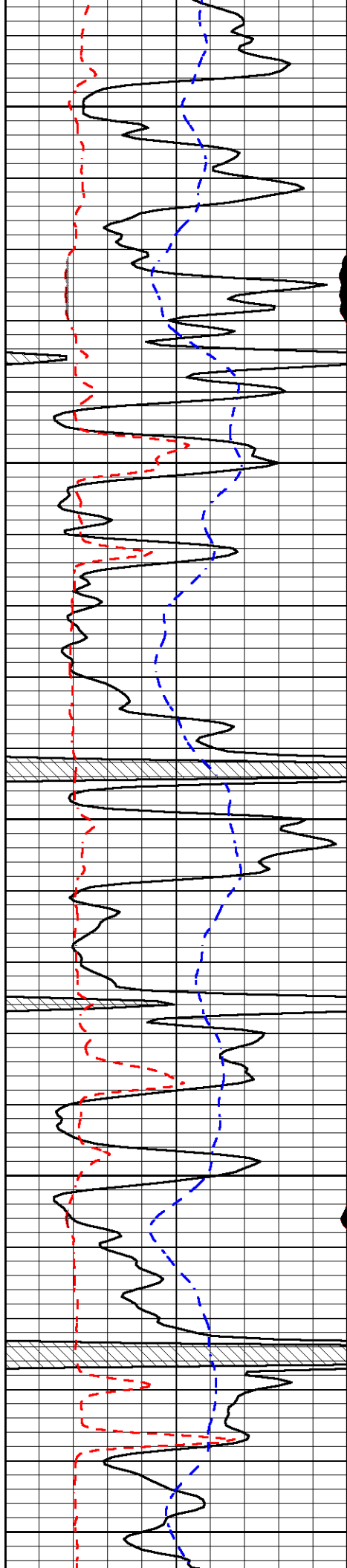


-32

-32

-31

-32



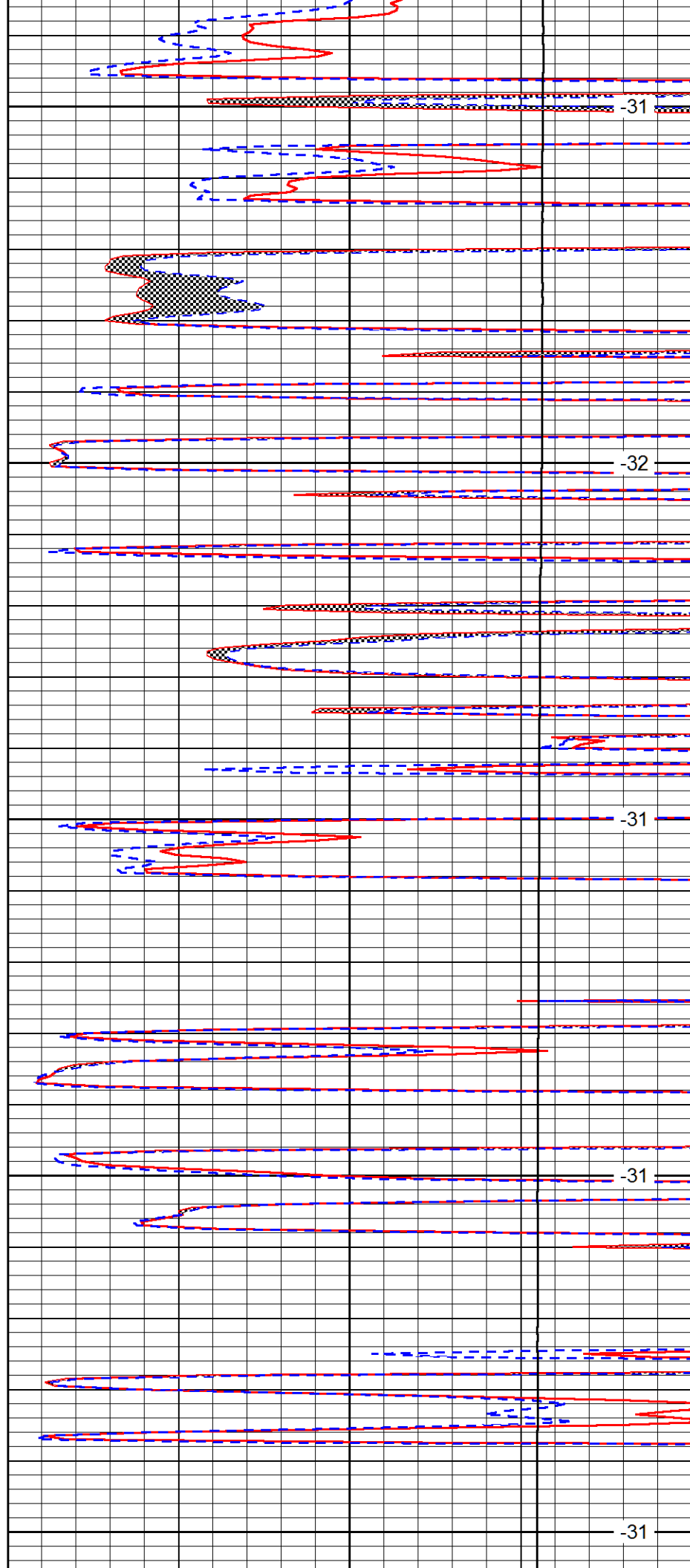
4150

4200

4250

4300

4350



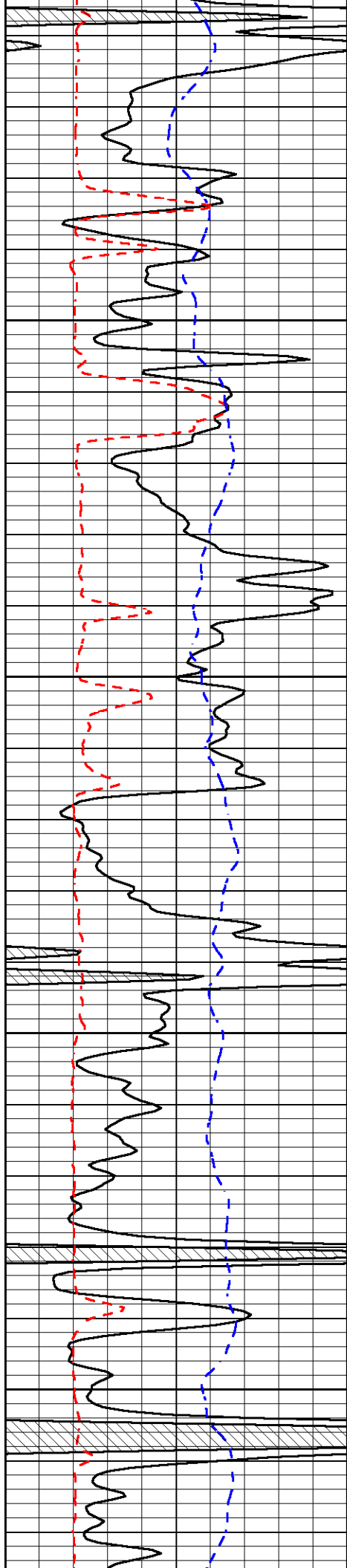
-31

-32

-31

-31

-31

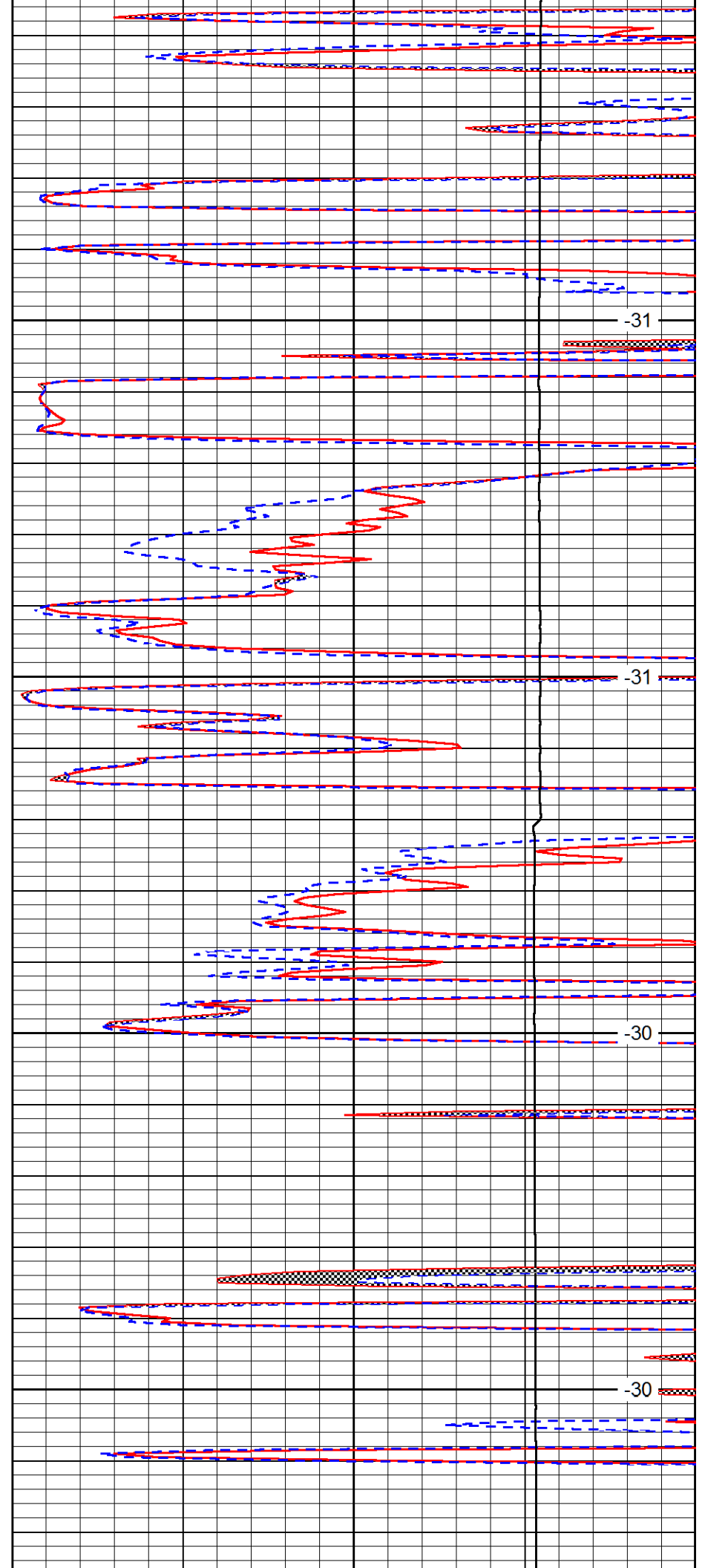


4400

4450

4500

4550

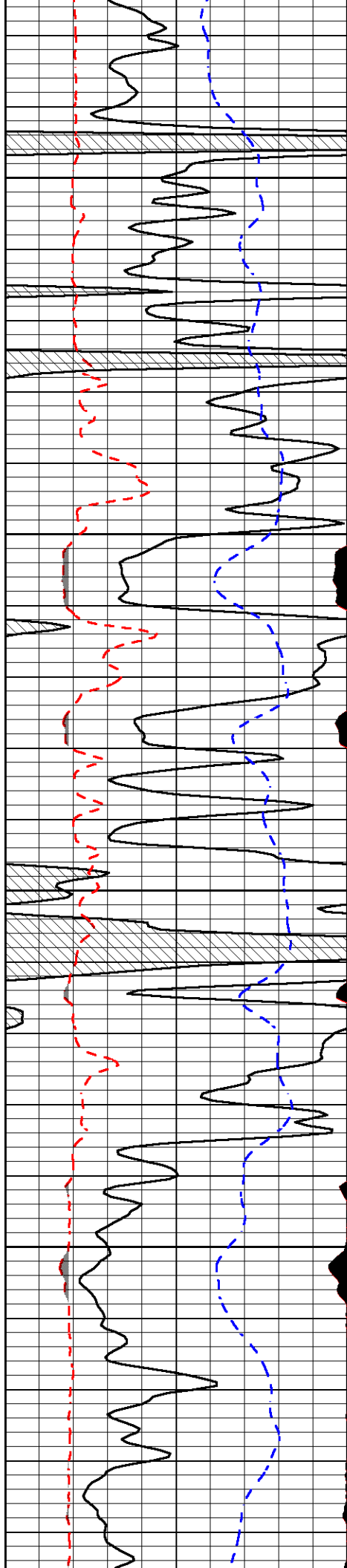


-31

31

-30

-30

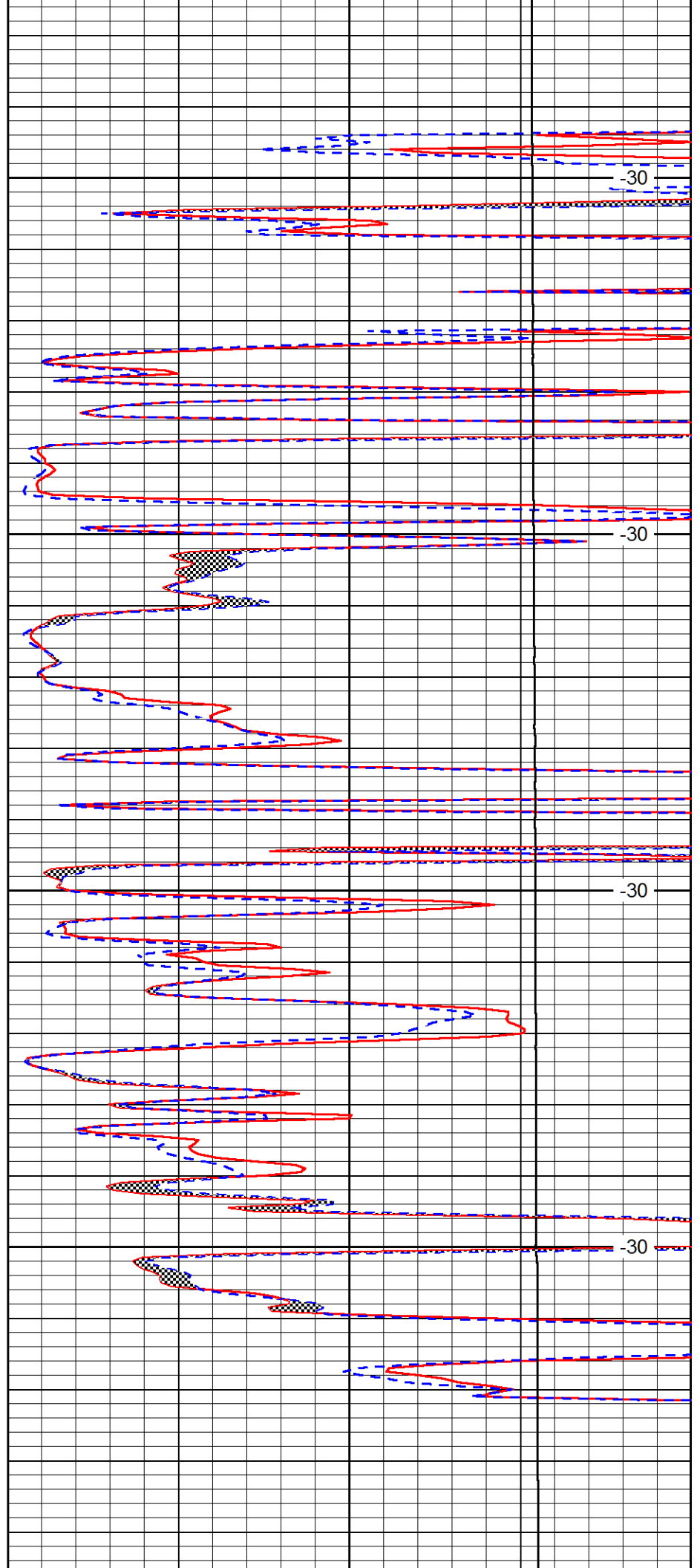


4600

4650

4700

4750

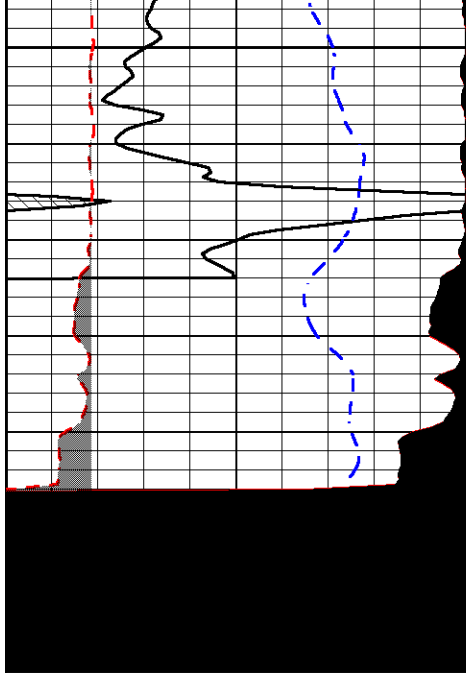


-30

-30

-30

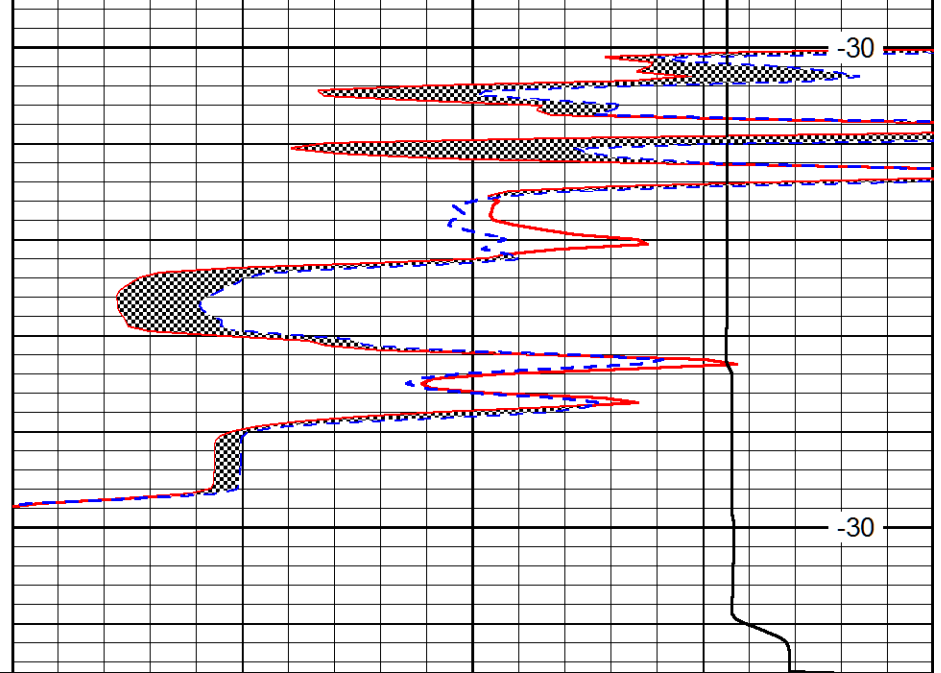
-30



0	Gamma Ray	150
6	MCAL (GAPI)	16
2.875	Mud Cake (GAPI)	7.875
-200	SP (mV)	0

4800

4850



0	Micro Inverse 1 X 1	40
0	Micro Normal 2"	40
10000	Line Weight	0

LSPD