



Pioneer Energy Services

Dual Induction Log

API No.	15-193-20,950-00-00	
Company	VAL ENERGY, INC.	
Well	BIGGS NO.1-2	
Field	WILD CAT	
County	THOMAS	State
		KANSAS
Location	2294' FNL & 2272' FEL	
Sec: 2	Twp: 8S	Rge: 36W
Permanent Datum	GROUND LEVEL	Elevation 3286
Log Measured From	KELLY BUSHING	10 Ft. Above Perm. Datum
Drilling Measured From	KELLY BUSHING	
		Other Services CNL/CDL MEL
		Elevation K.B. 3296 D.F. G.L. 3286

Date	4/26/2015
Run Number	ONE
Depth Driller	4860
Depth Logger	4860
Bottom Logged Interval	4859
Top Log Interval	200
Casing Driller	8.625 @ 222
Casing Logger	222
Bit Size	7.875
Type Fluid in Hole	CHEMICAL
Salinity, ppm CL	6,000
Density / Viscosity	9.0 57
pH / Fluid Loss	10.5 8.0
Source of Sample	Flowline
Rm @ Meas. Temp	.55 @ 62
Rmf @ Meas. Temp	.41 @ 62
Rmc @ Meas. Temp	.74 @ 62
Source of Rmf / Rmc	Charts
Rm @ BHT	.27 @ 125
Operating Rig Time	3 HOURS
Max Rec. Temp. F	125
Equipment Number	15
Location	HAYS
Recorded By	C. DESAIRE
Witnessed By	HARLEY SAYLES

<<< Fold Here >>>

All interpretations are opinions based on inferences from electrical or other measurements and we cannot and do not guarantee the accuracy or correctness of any interpretation, and we shall not, except in the case of gross or willful negligence on our part, be liable or responsible for any loss, costs, damages, or expenses incurred or sustained by anyone resulting from any interpretation made by any of our officers, agents or employees. These interpretations are also subject to our general terms and conditions set out in our current Price Schedule.

Comments

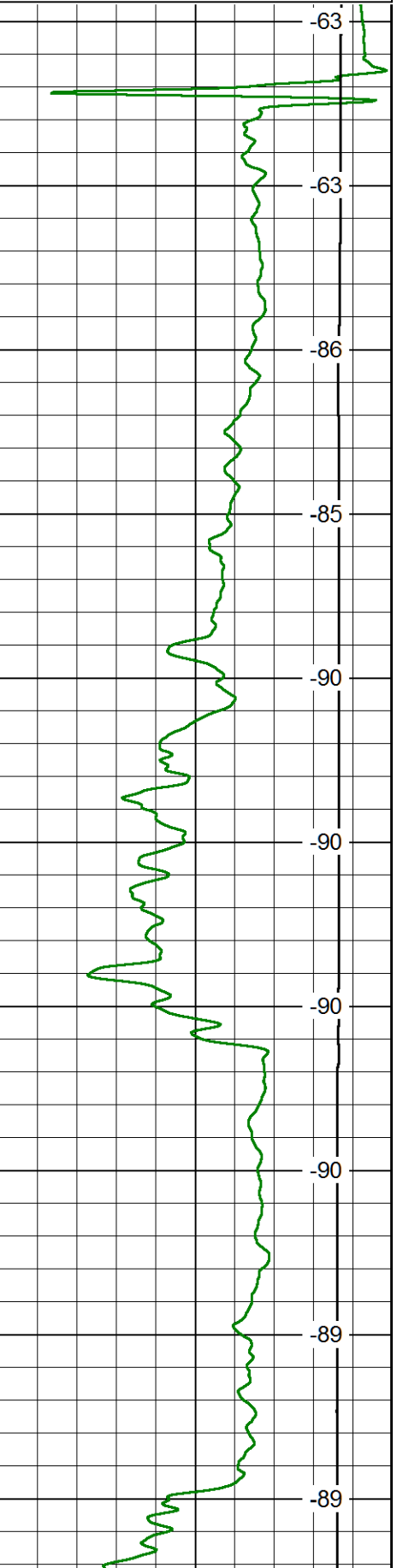
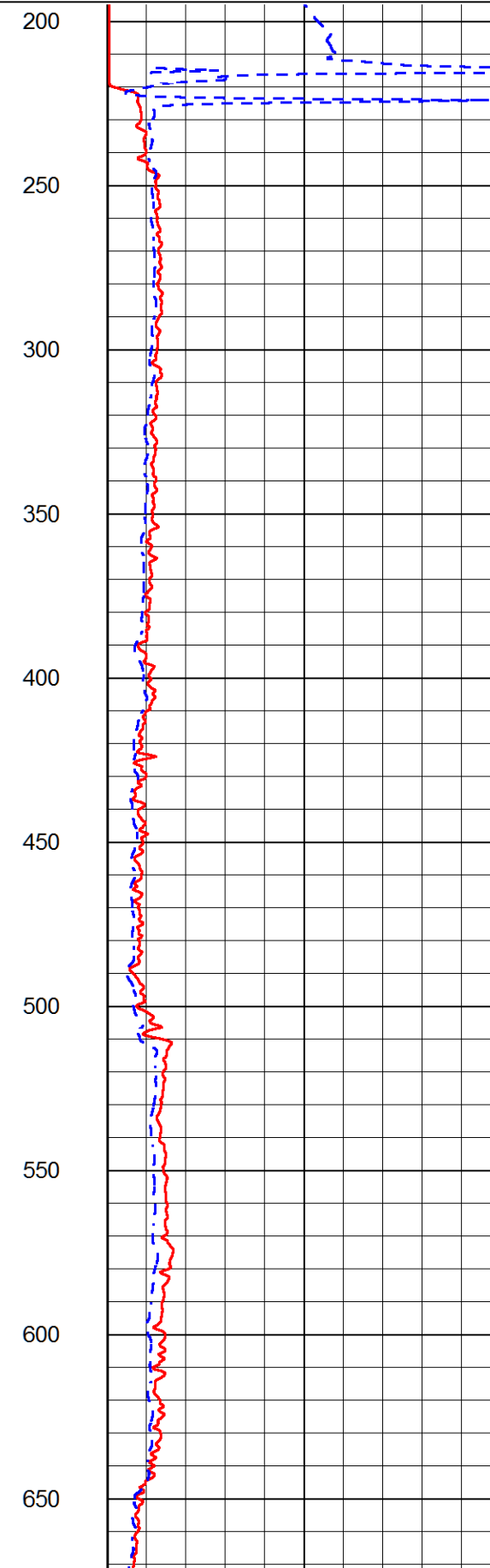
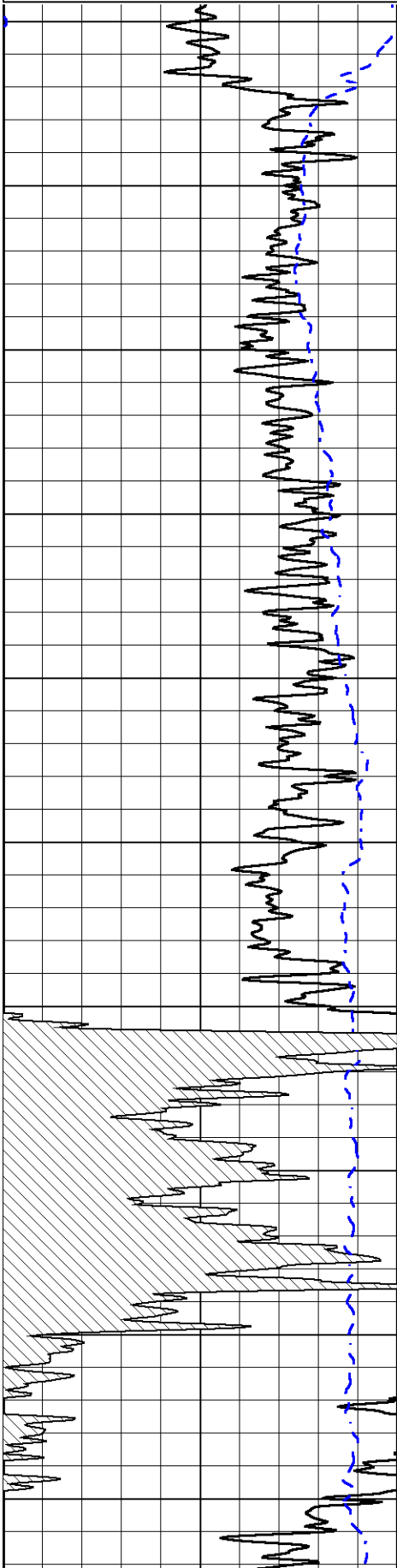
Thank you for using Pioneer Energy Services
785.625.3858

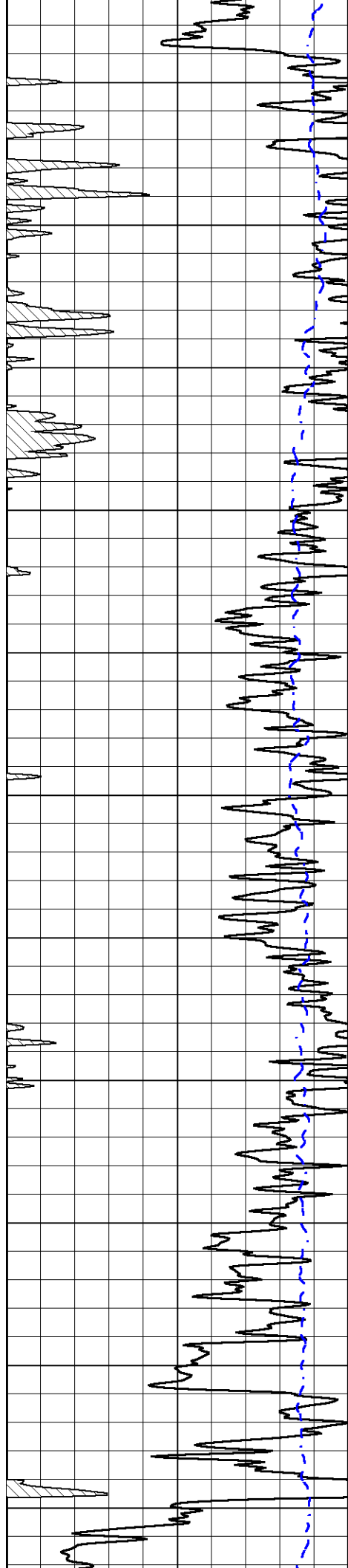
LEVANT KS, 1/2 N FROM I-70 TO HWY 24,
6 W TO 5 RD, 2 N TO S RD, S INTO

Database File valhd.db
 Dataset Pathname DIL/valstk
 Presentation Format dil2in
 Dataset Creation Sun Apr 26 19:08:40 2015
 Charted by Depth in Feet scaled 1:600

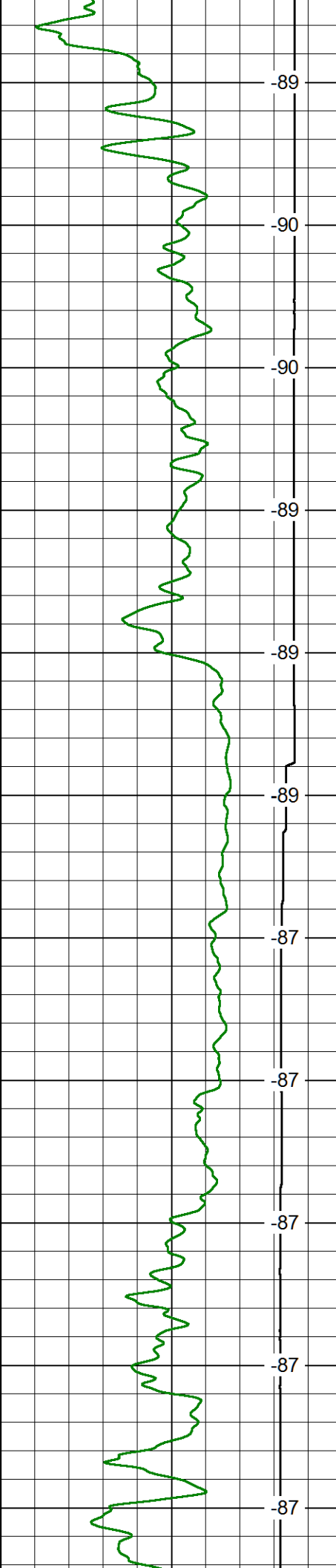
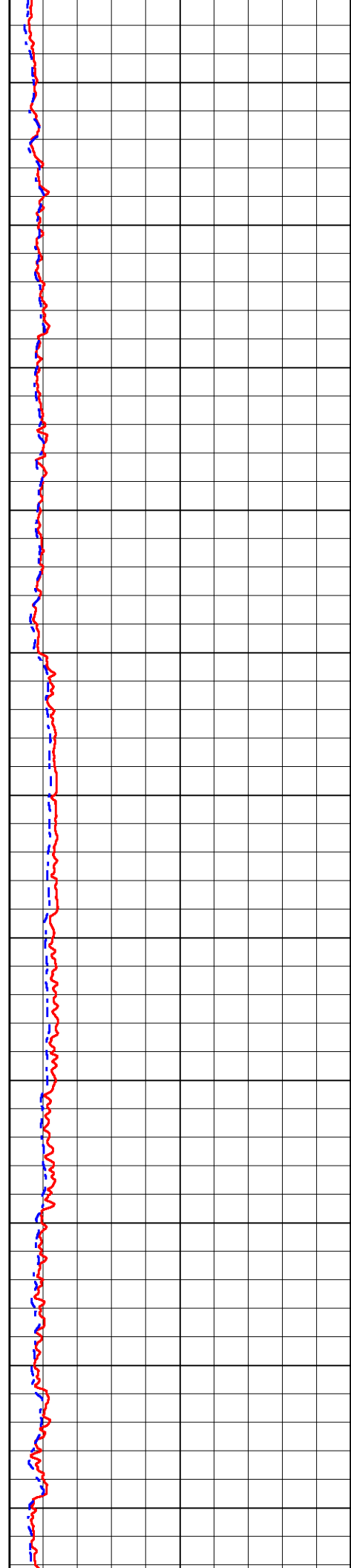
0	Gamma Ray	150
-200	SP (mV)	0

1000	Conductivity	0	
15000	Line Tension	0	
0	Shallow Resistivity	50	LSPD
0	Deep Resistivity	50	
50	Shallow Resistivity	500	
50	Deep Resistivity	500	

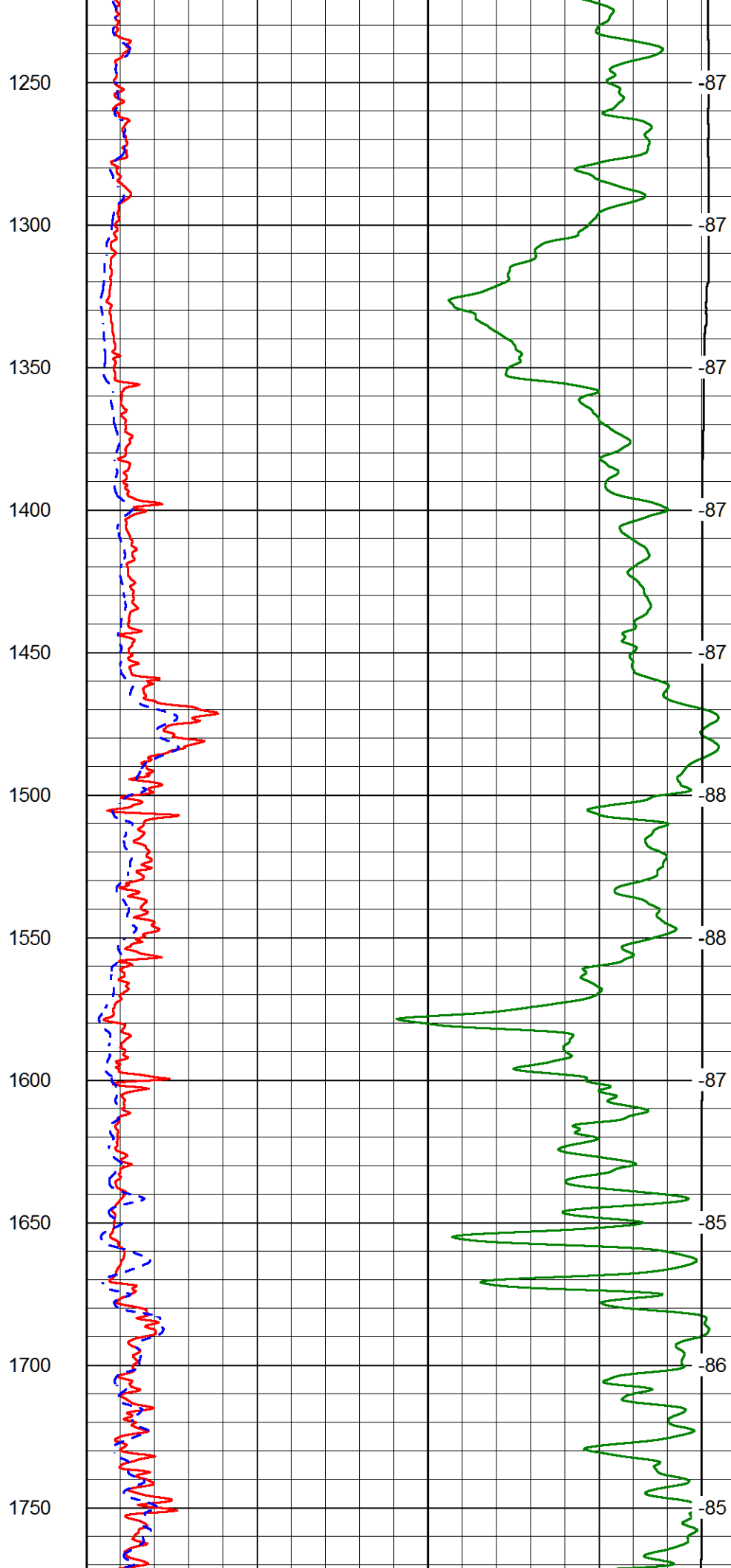
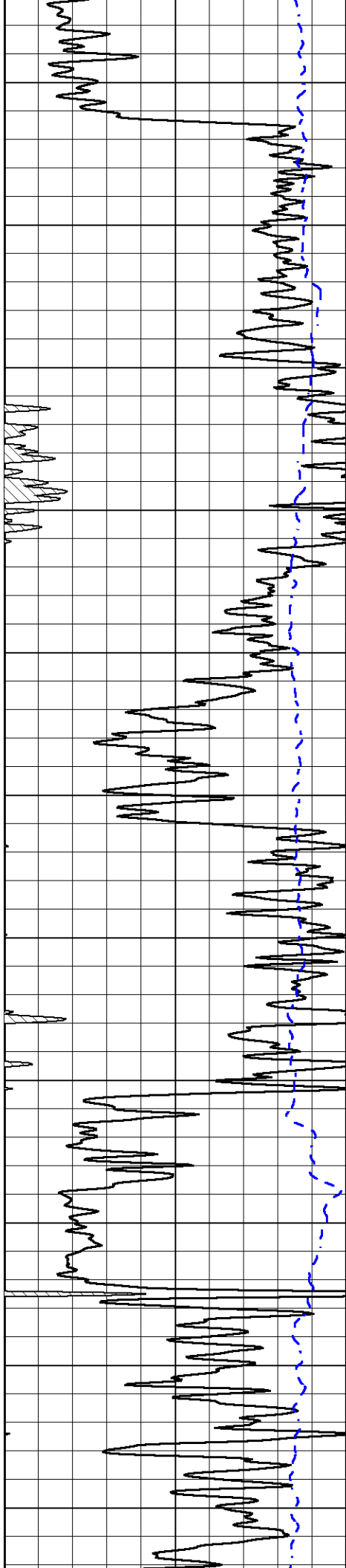


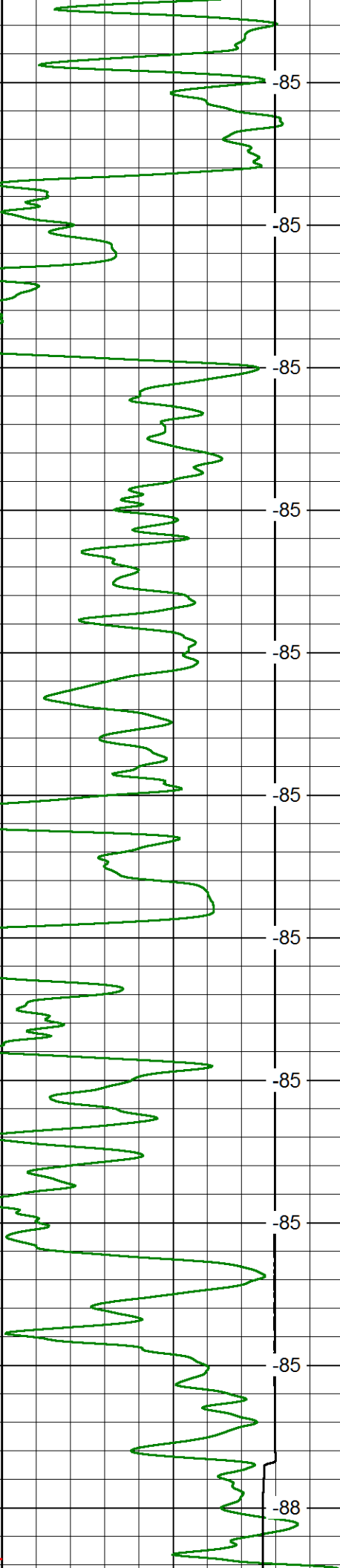
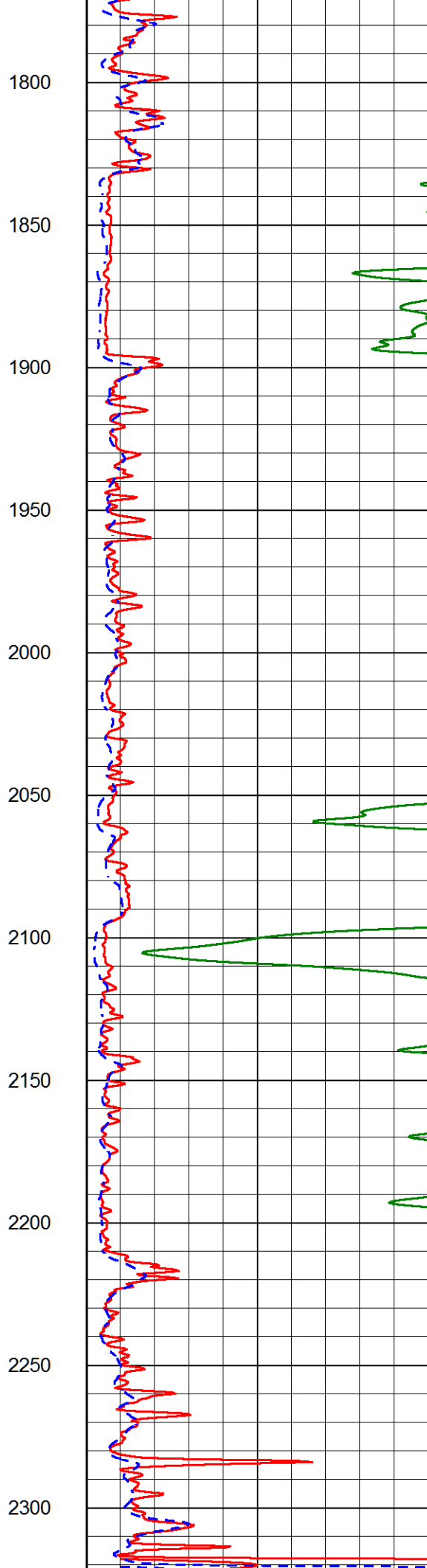
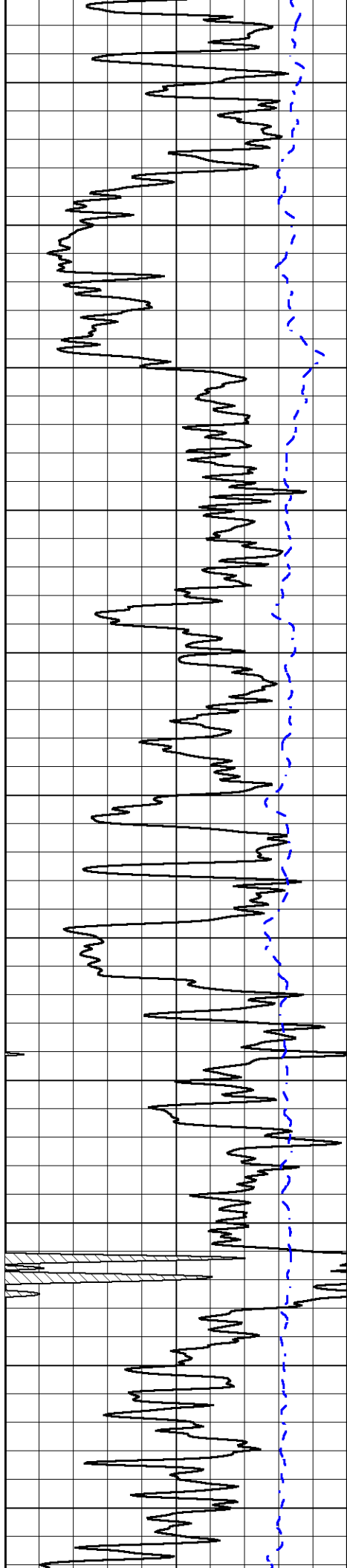


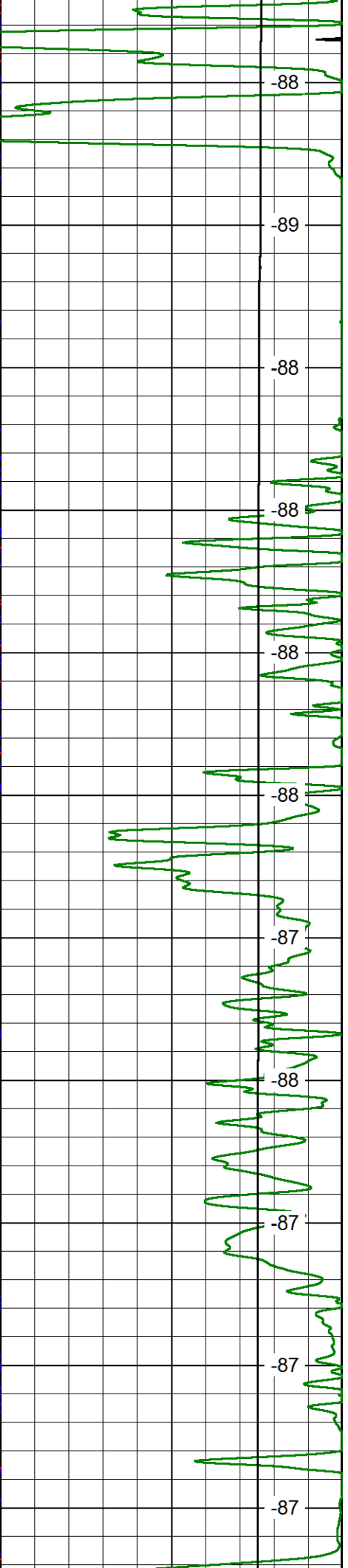
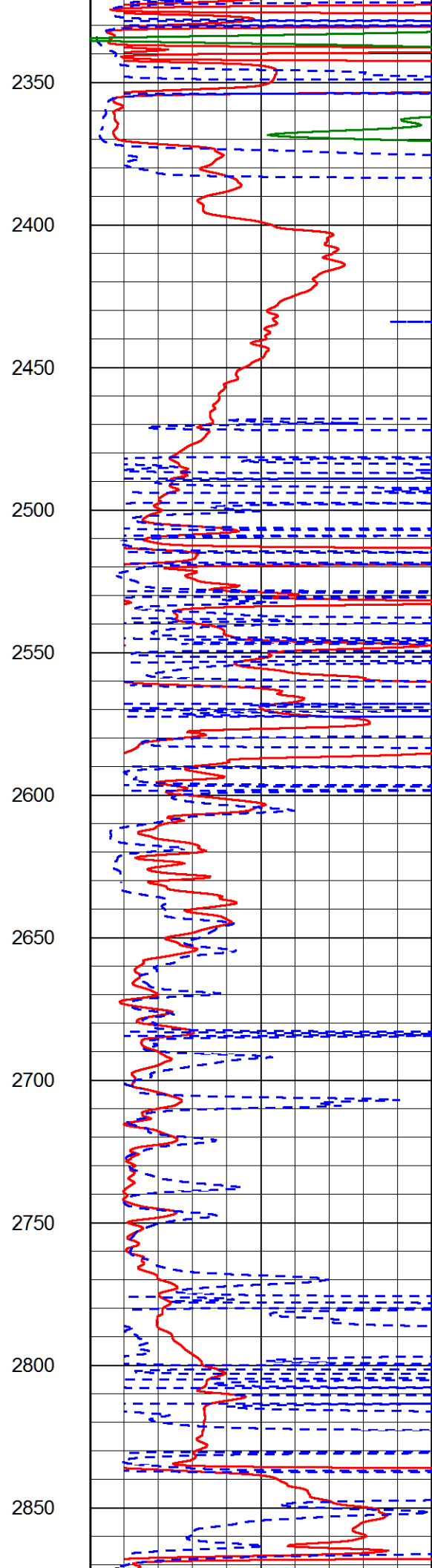
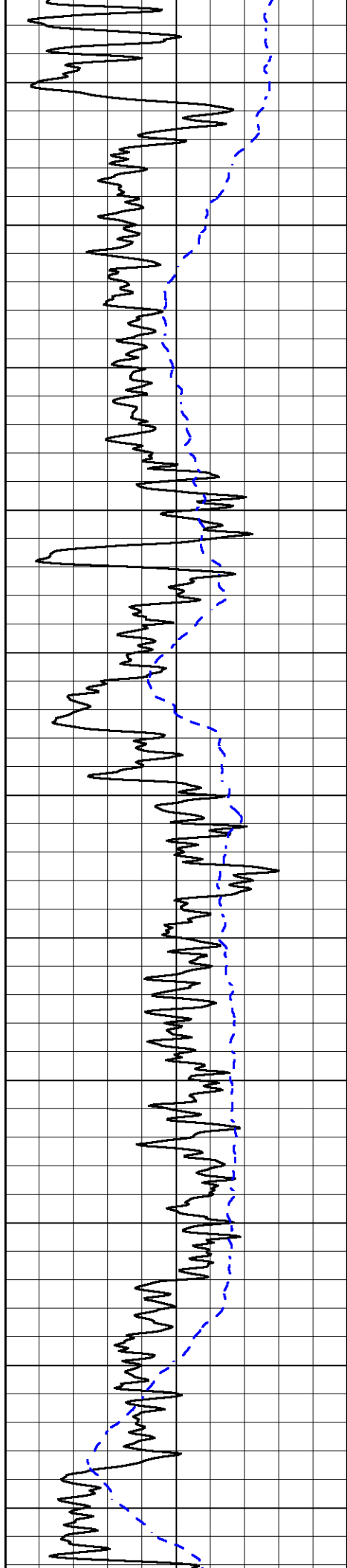
700
750
800
850
900
950
1000
1050
1100
1150
1200

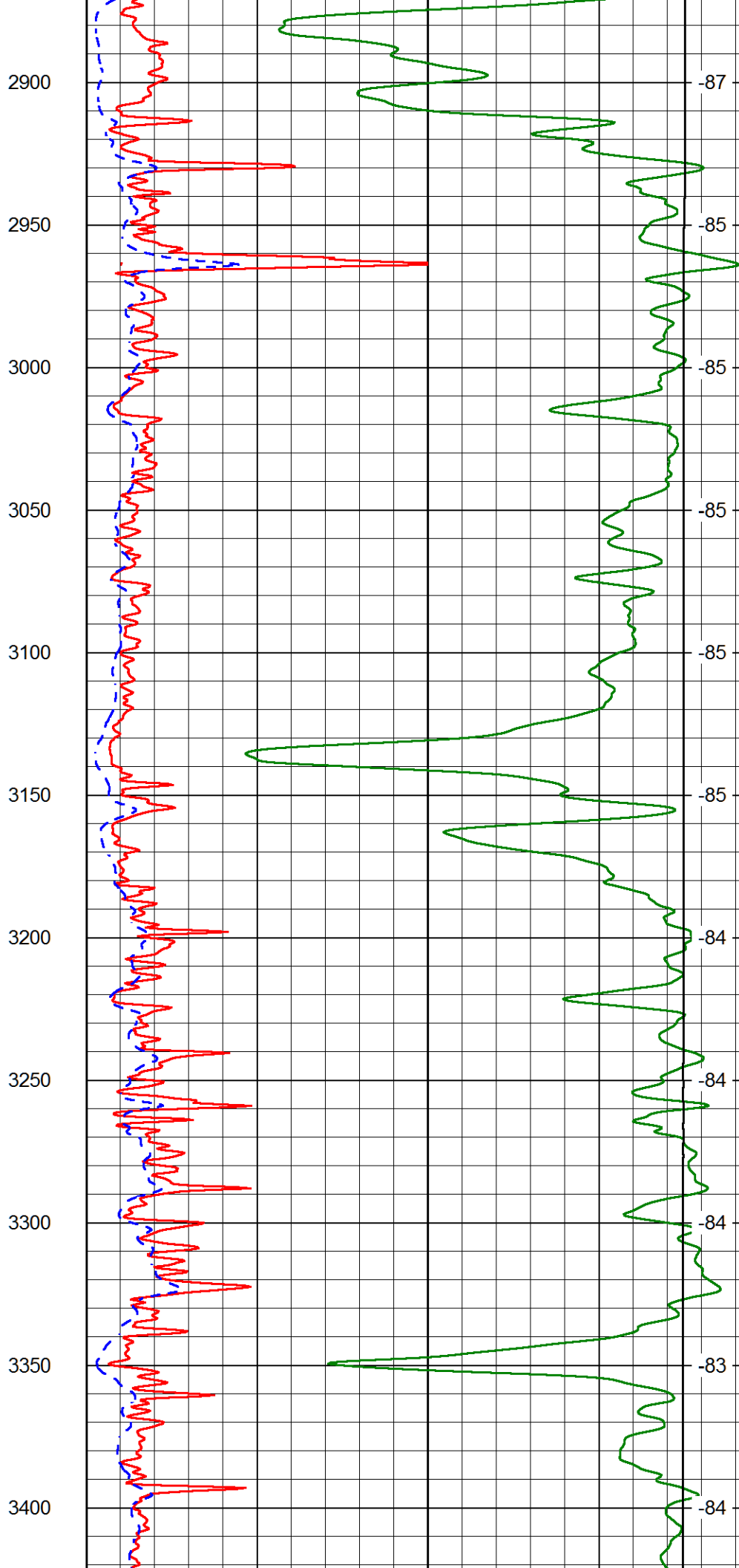
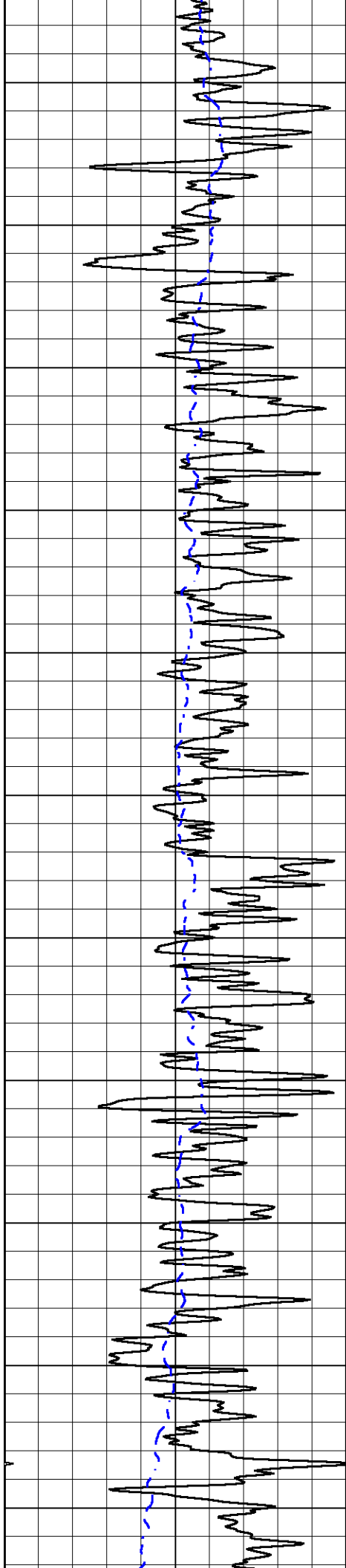


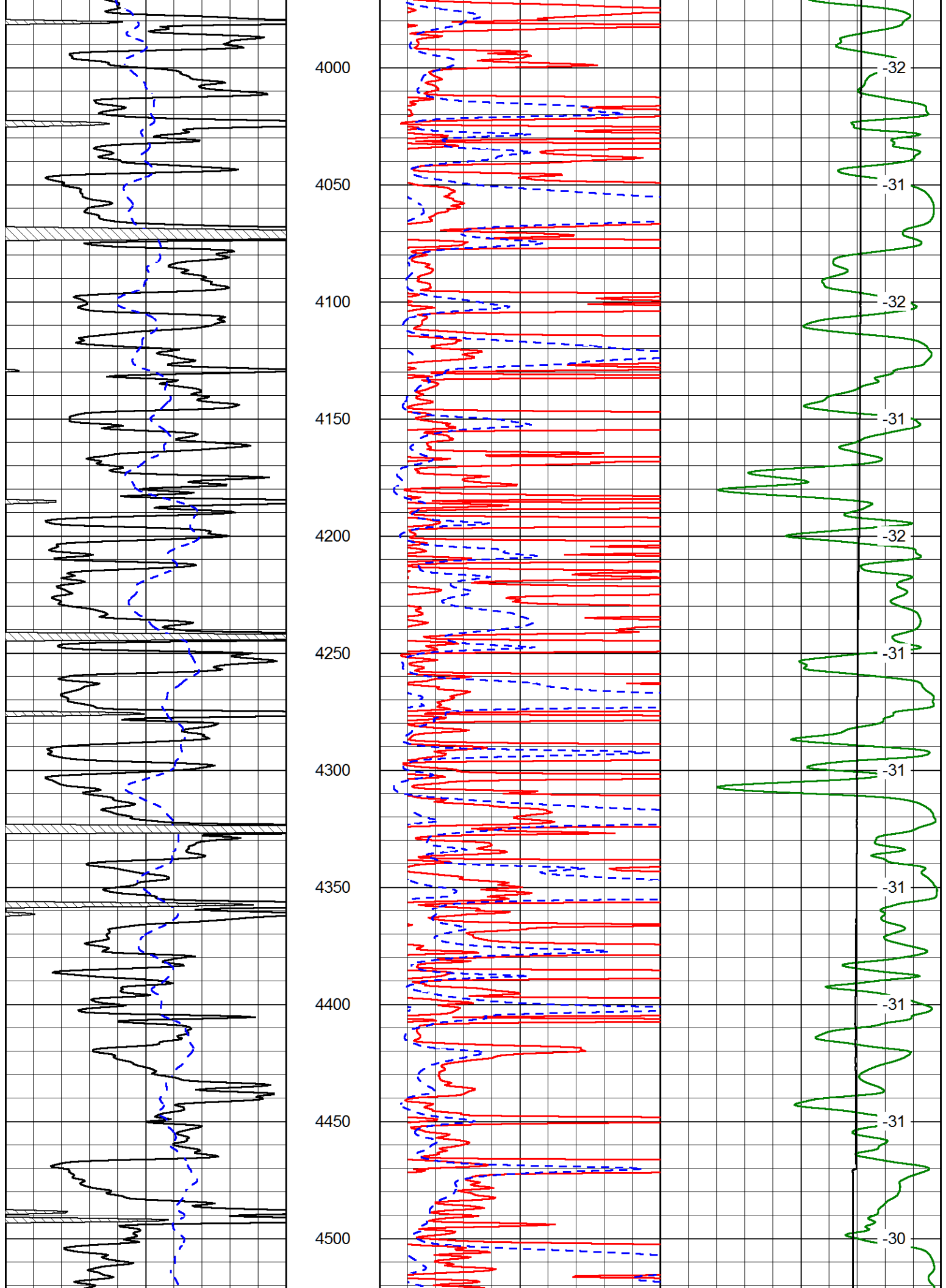
-89
-90
-90
-89
-89
-89
-87
-87
-87
-87
-87
-87

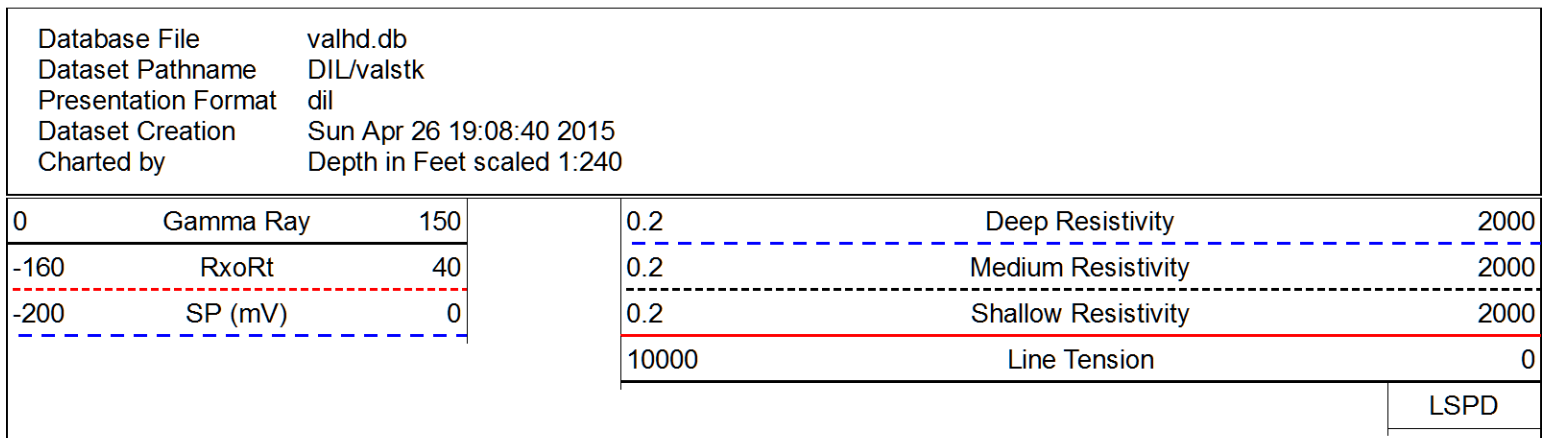
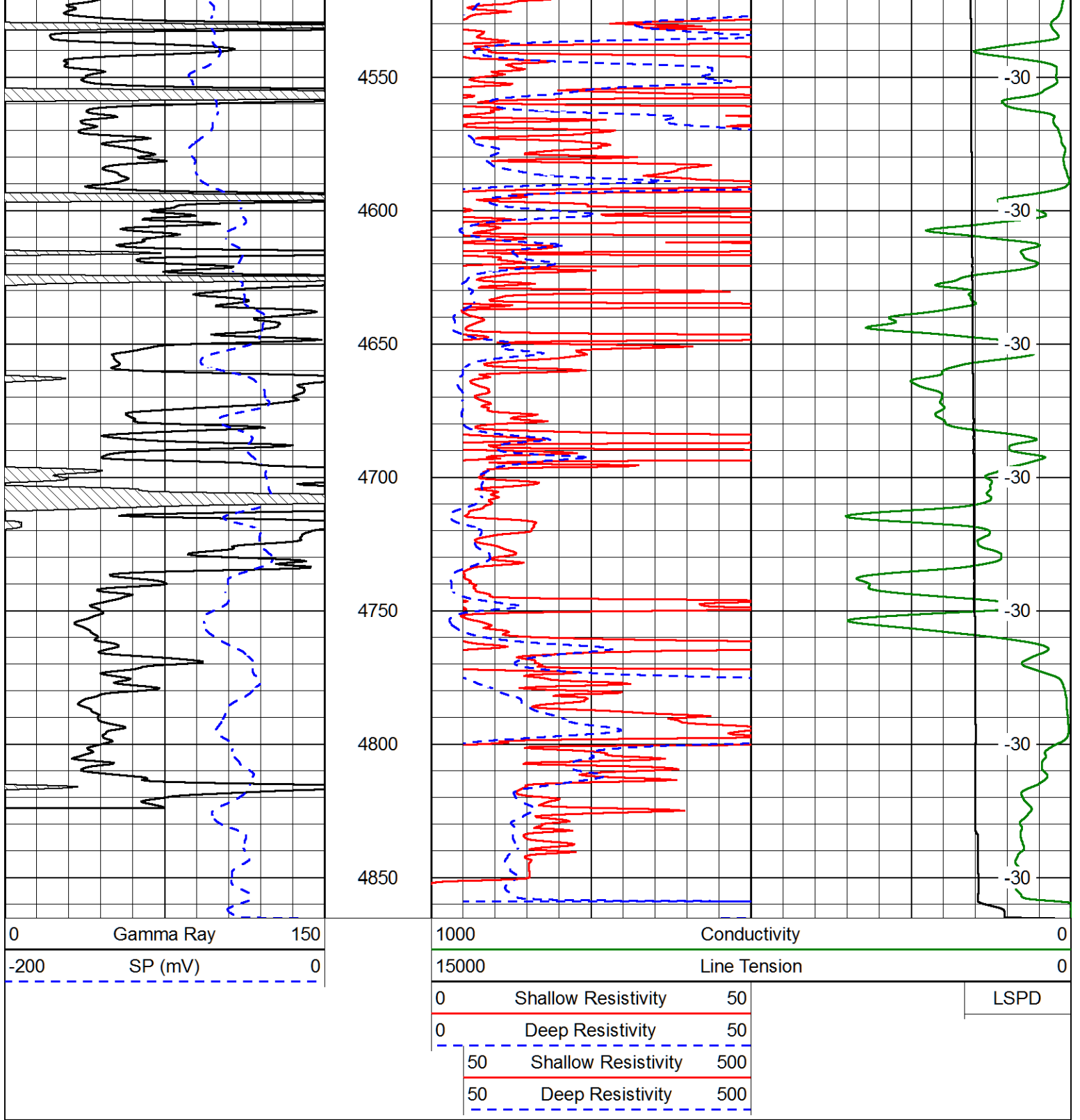


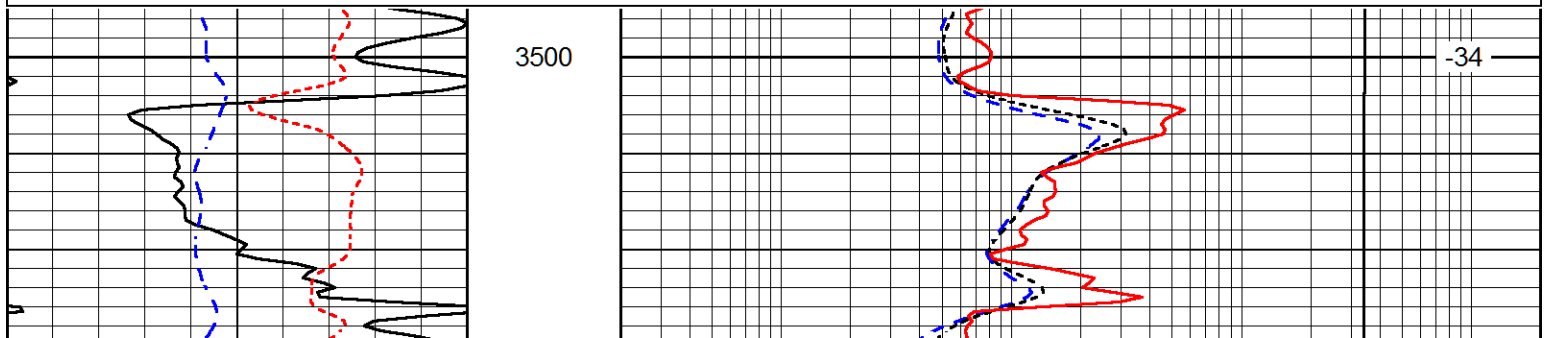
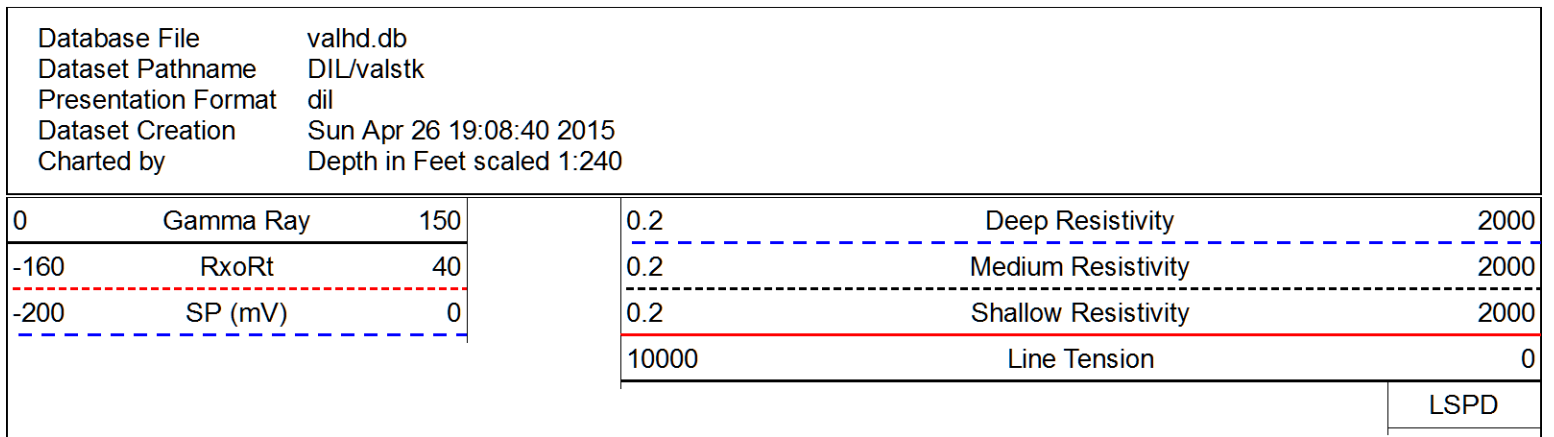
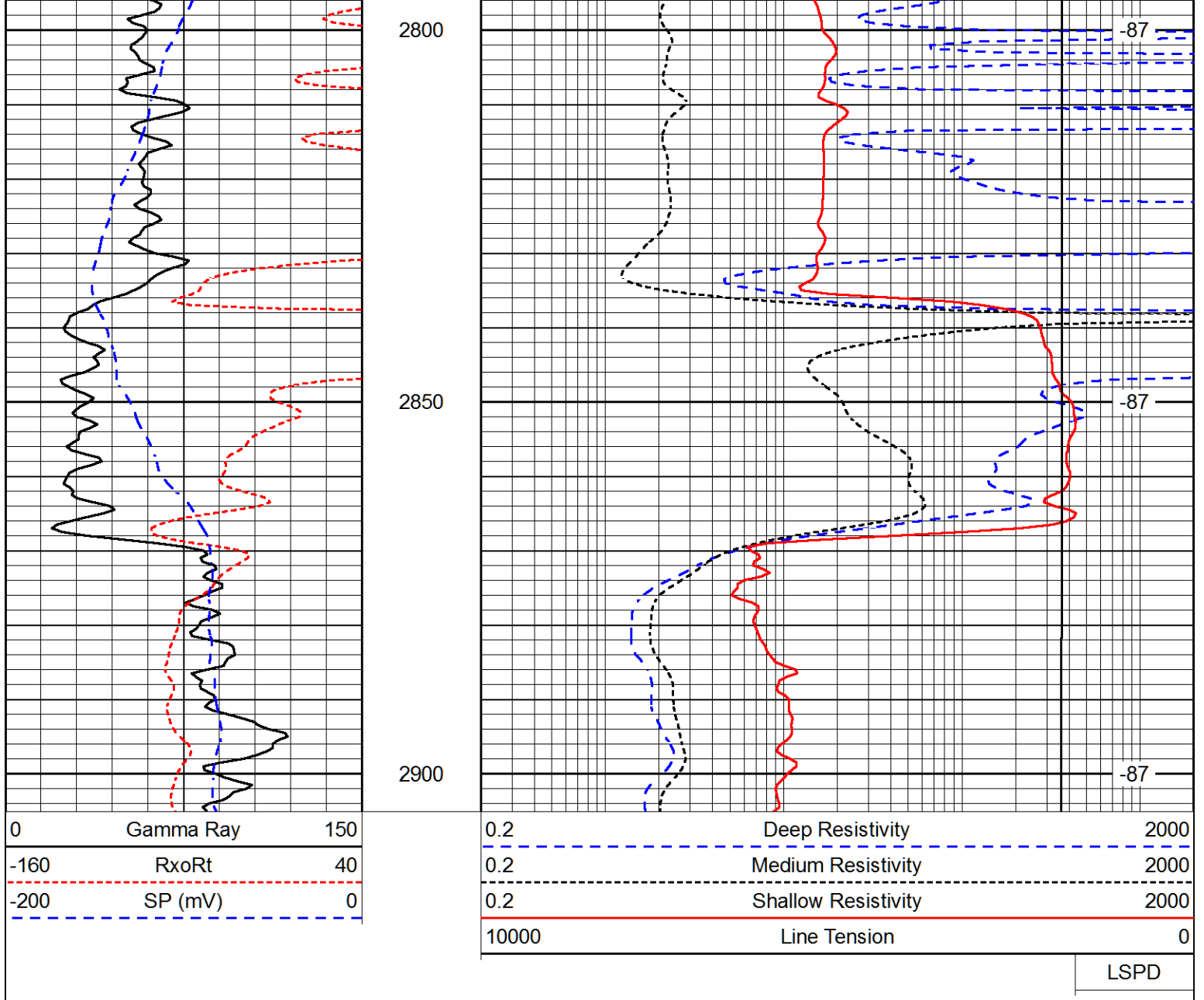


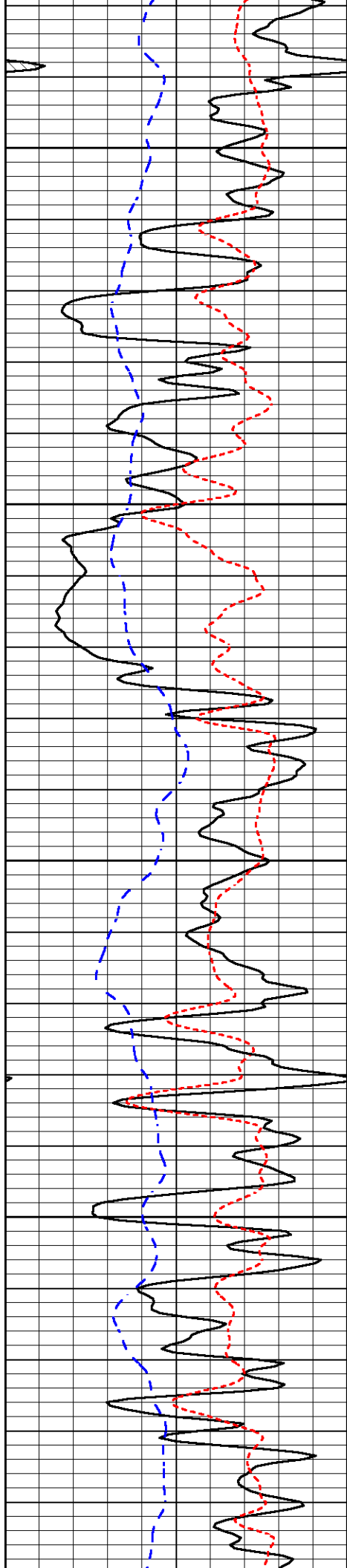












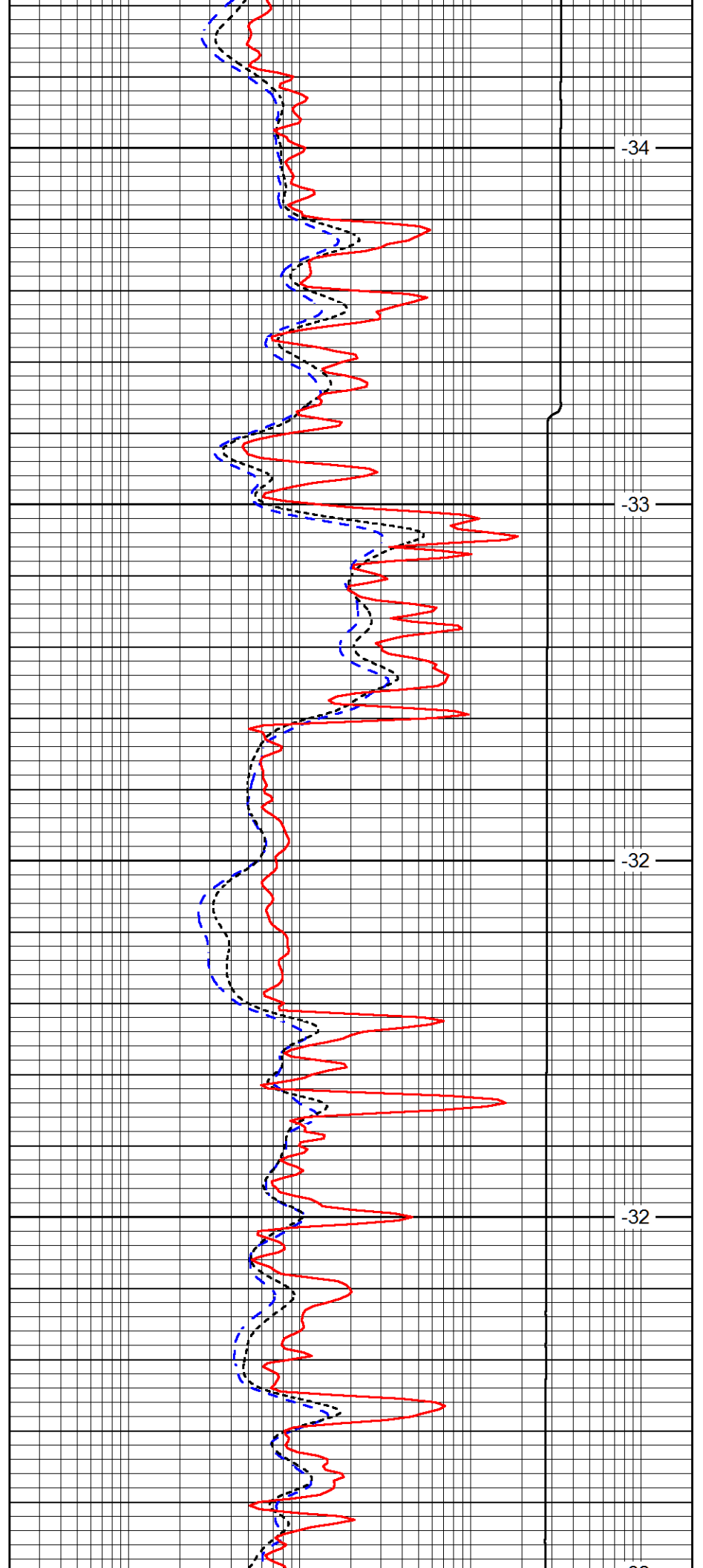
3550

3600

3650

3700

3750



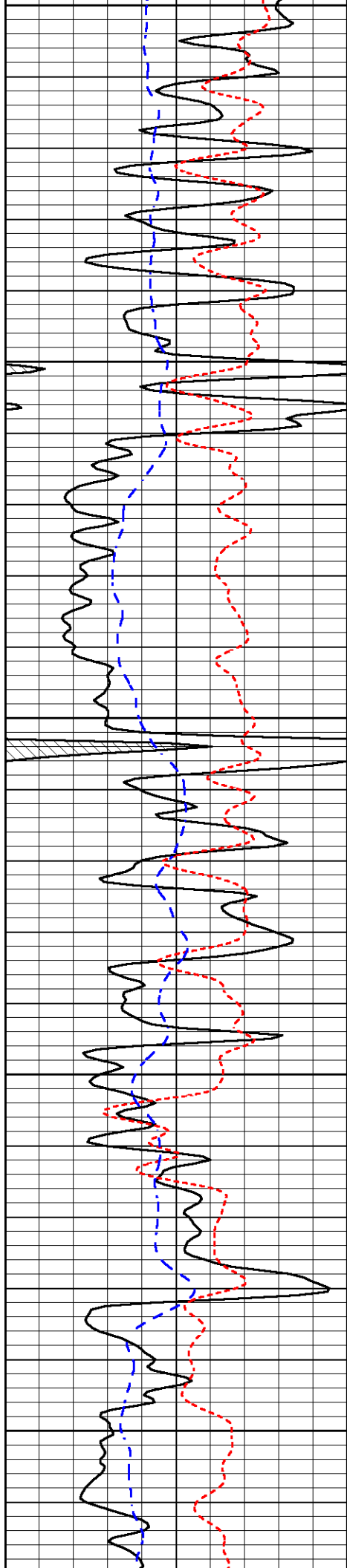
-34

-33

-32

-32

-31



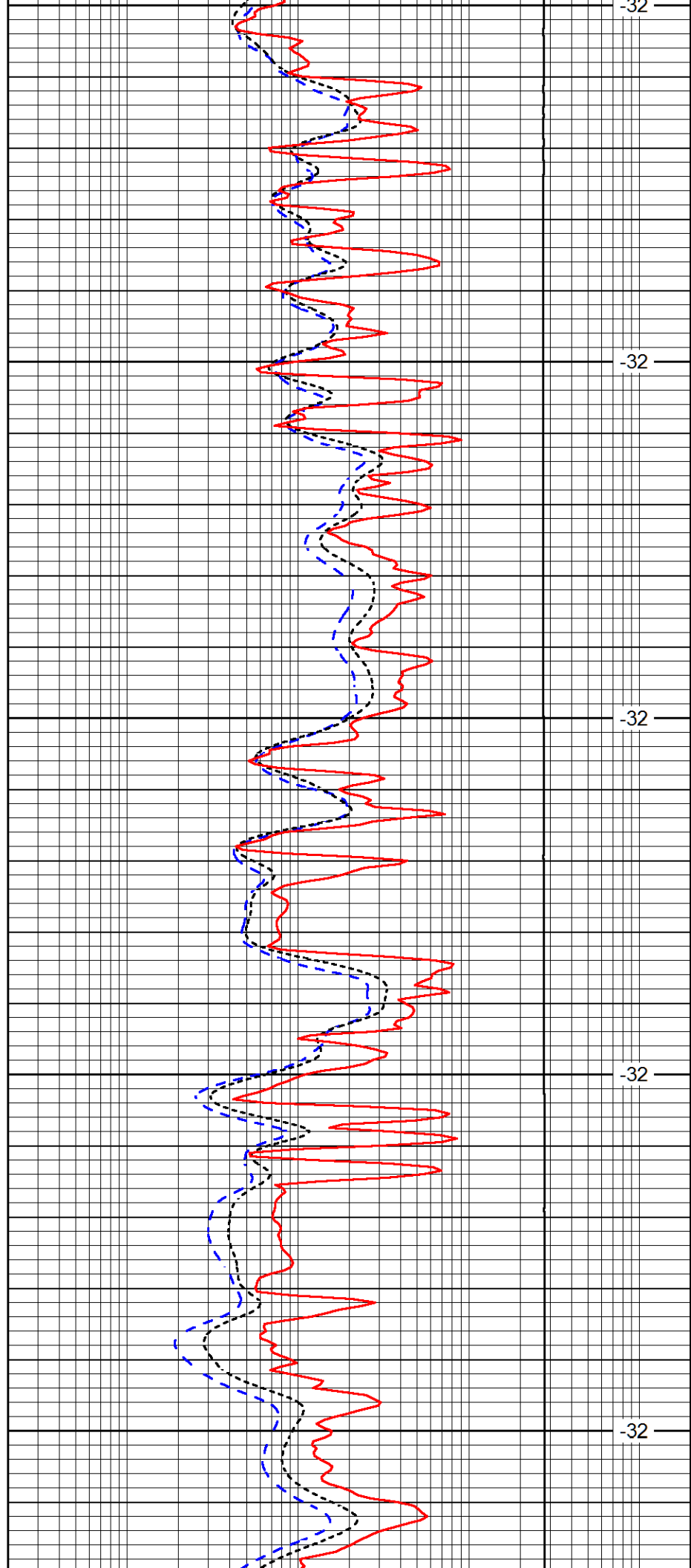
3750

3800

3850

3900

3950



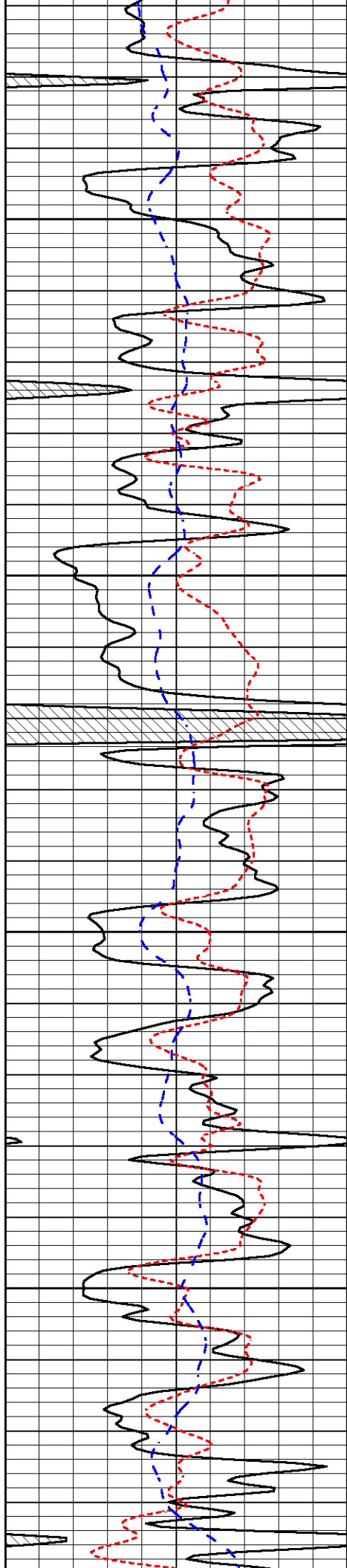
-32

-32

-32

-32

-32

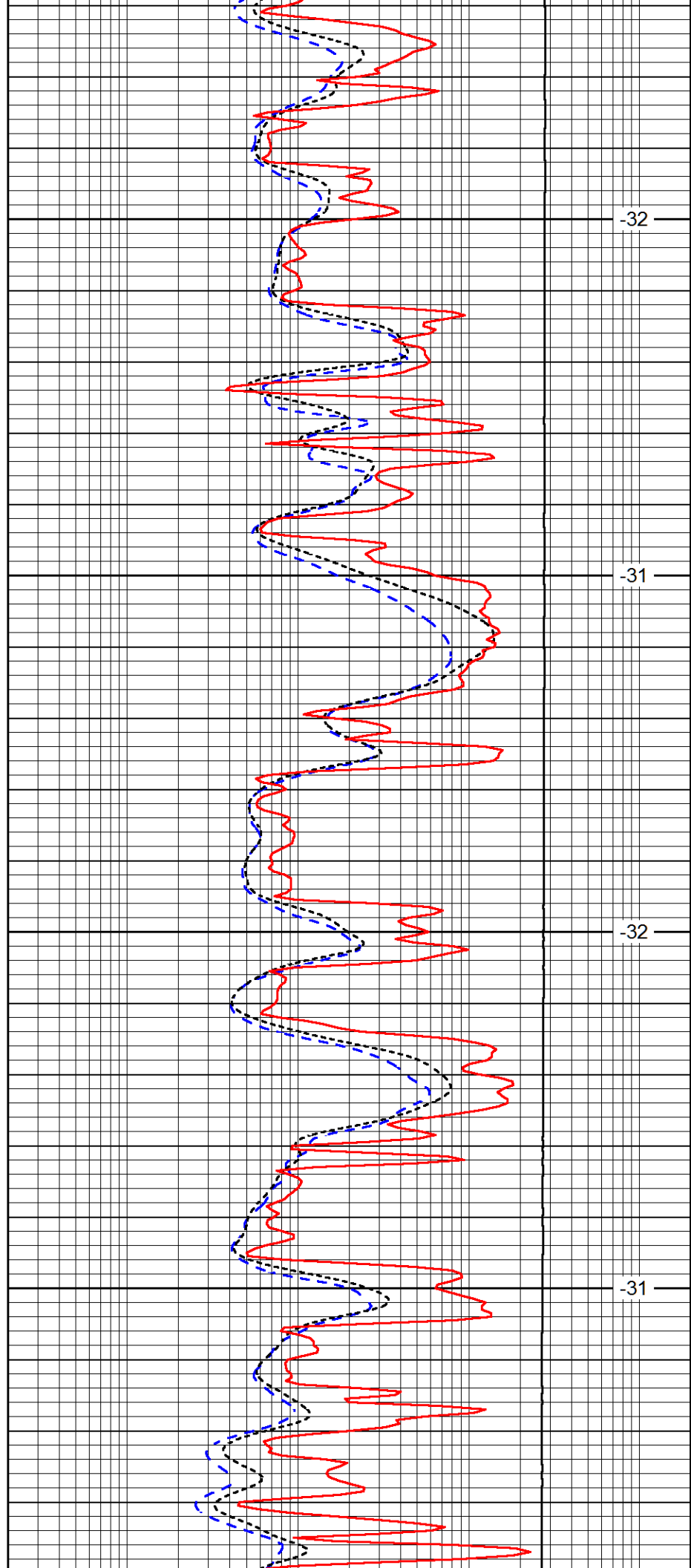


4000

4050

4100

4150

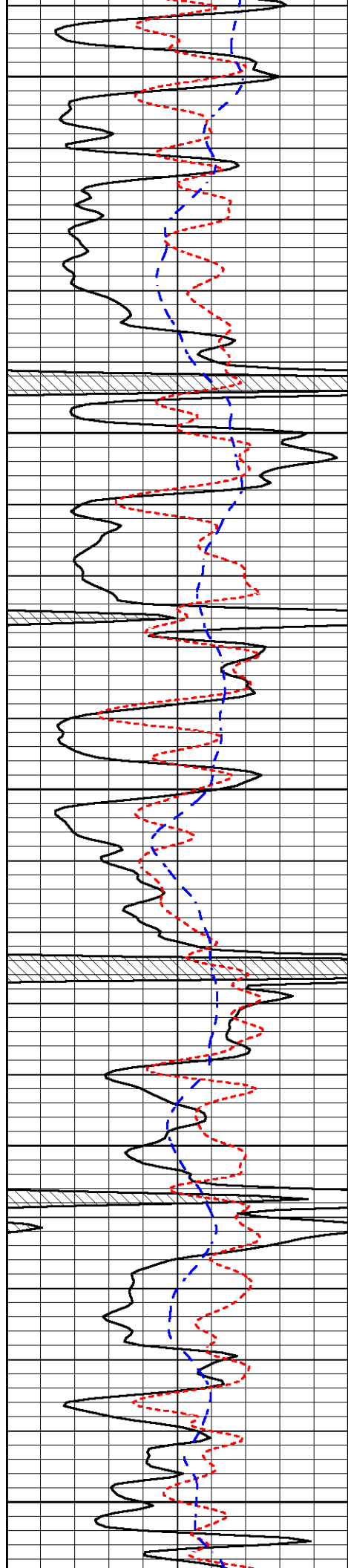


-32

-31

-32

-31



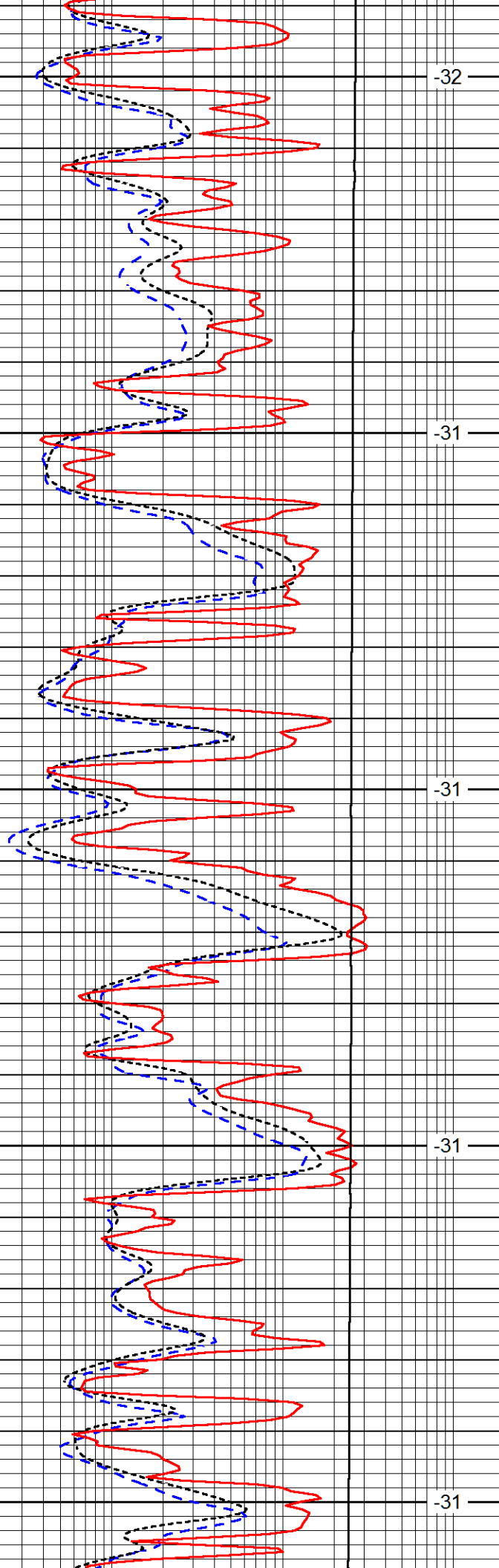
4200

4250

4300

4350

4400



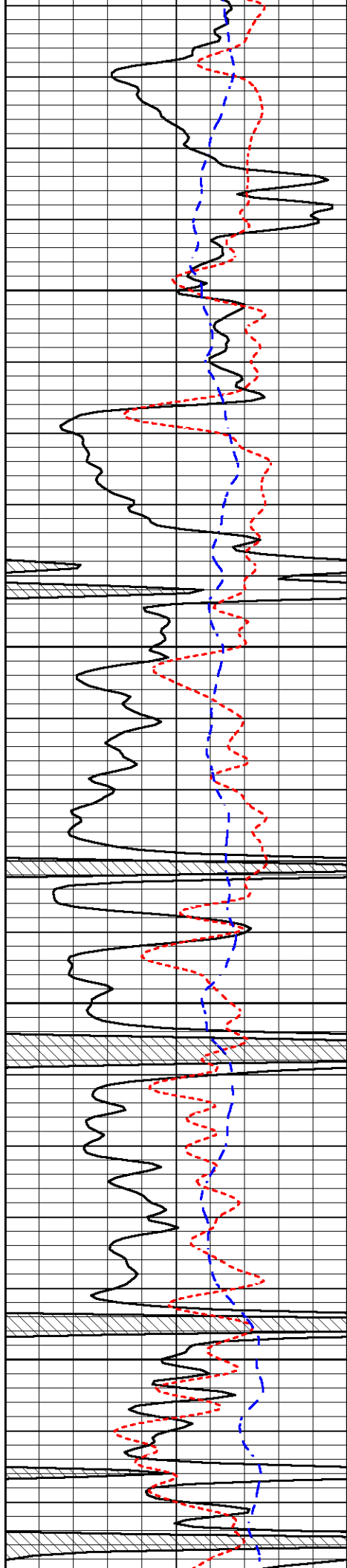
-32

-31

-31

-31

-31

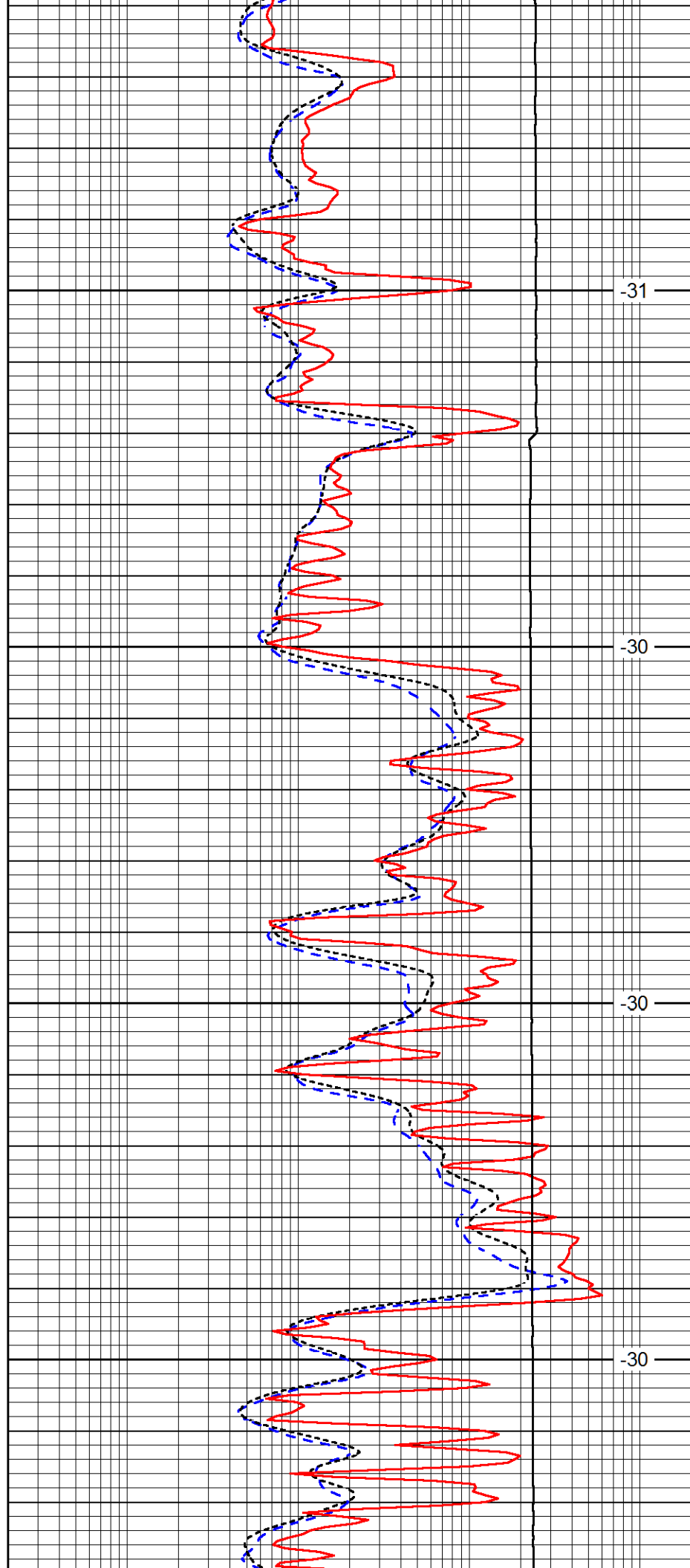


4450

4500

4550

4600

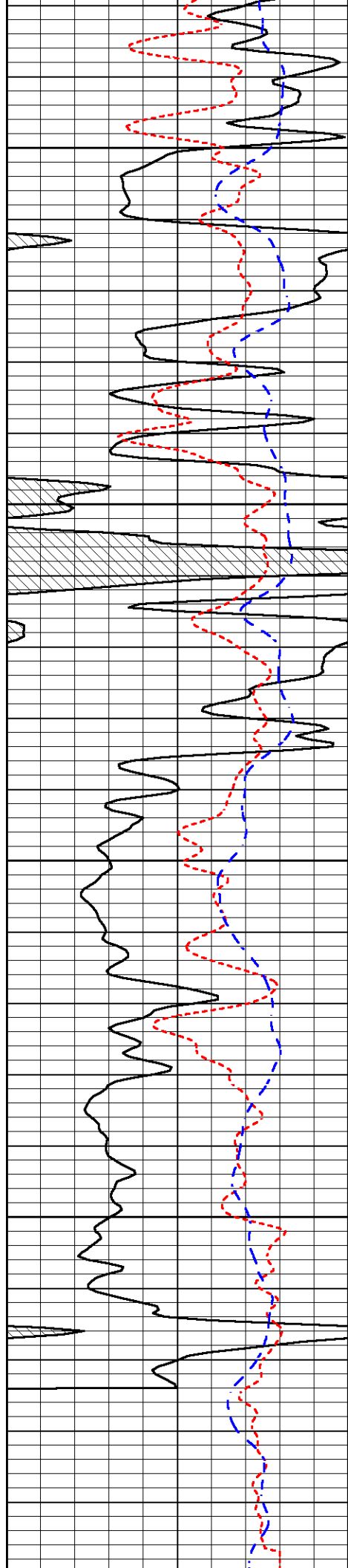


-31

-30

-30

-30



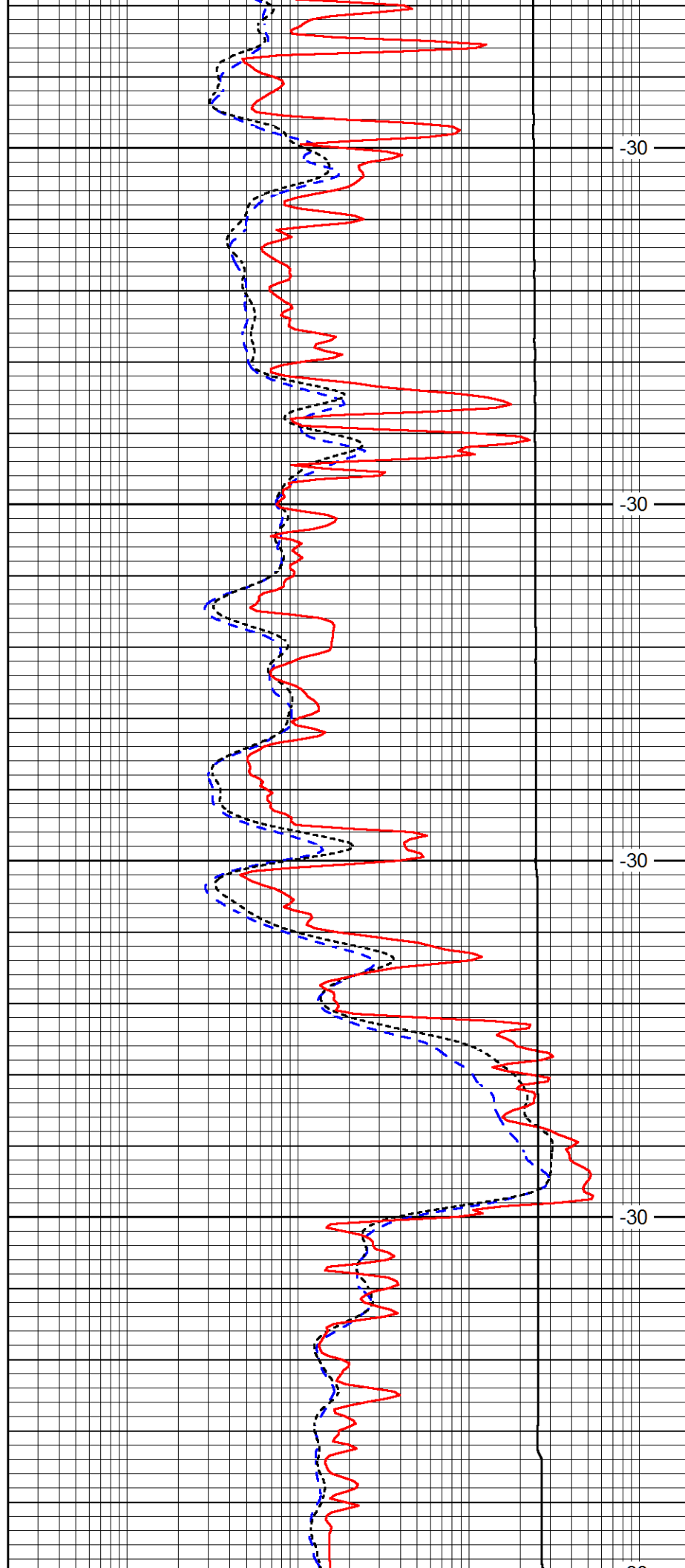
4650

4700

4750

4800

4850



-30

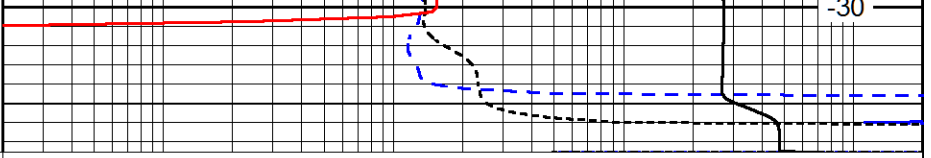
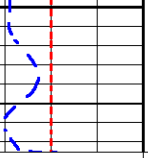
-30

-30

-30

-30

4850



0	Gamma Ray	150
-160	RxoRt	40
-200	SP (mV)	0

0.2	Deep Resistivity	2000
0.2	Medium Resistivity	2000
0.2	Shallow Resistivity	2000
10000	Line Tension	0

LSPD