



Pioneer Energy Services

Microresistivity Log

API No.	15-065-24,098-00-00		
Company	Ainsworth Operating Company		
Well	Davis No. 4		
Field	Red Sun		
County	Graham	State	Kansas
Location	2,160' FNL & 440' FEL		
Sec: 34	Twp: 6S	Rge: 22W	
Permanent Datum	Ground Level	Elevation 2245	Other Services CNL/CDL DIL/BHCS
Log Measured From	Kelly Bushing	10 Ft. Above Perm. Datum	
Drilling Measured From	Kelly Bushing		Elevation K.B. 2255 D.F. 2245 G.L. 2245

Date	3/2/2015
Run Number	Two
Depth Driller	3881
Depth Logger	3882
Bottom Logged Interval	3881
Top Log Interval	3200
Casing Driller	8.625 @ 268
Casing Logger	266
Bit Size	7.875
Type Fluid in Hole	Chemical
Salinity, ppm CL	500
Density / Viscosity	9.1 44
pH / Fluid Loss	10.0 8.4
Source of Sample	Flowline
Rm @ Meas. Temp	1.40 @ 66
Rmf @ Meas. Temp	1.05 @ 66
Rmc @ Meas. Temp	1.89 @ 66
Source of Rmf / Rmc	Charts
Rm @ BHT	.80 @ 115
Operating Rig Time	4 1/2 Hours
Max Rec. Temp. F	115
Equipment Number	108
Location	Hays
Recorded By	J. Long
Witnessed By	Randy Kilian

<<< Fold Here >>>

All interpretations are opinions based on inferences from electrical or other measurements and we cannot and do not guarantee the accuracy or correctness of any interpretation, and we shall not, except in the case of gross or willful negligence on our part, be liable or responsible for any loss, costs, damages, or expenses incurred or sustained by anyone resulting from any interpretation made by any of our officers, agents or employees. These interpretations are also subject to our general terms and conditions set out in our current Price Schedule.

Comments

Thank you for using Pioneer Energy Services
785.625.3858

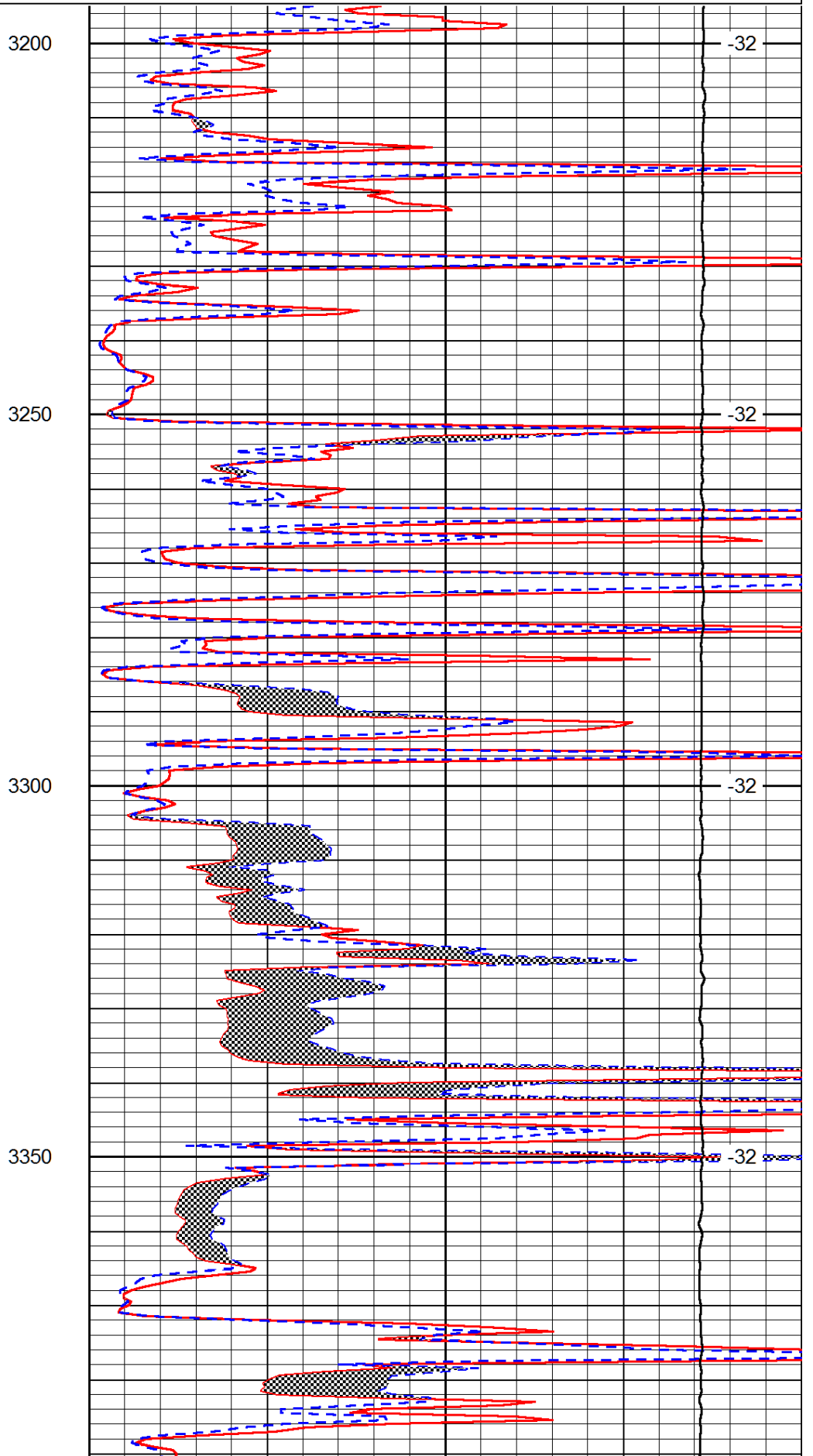
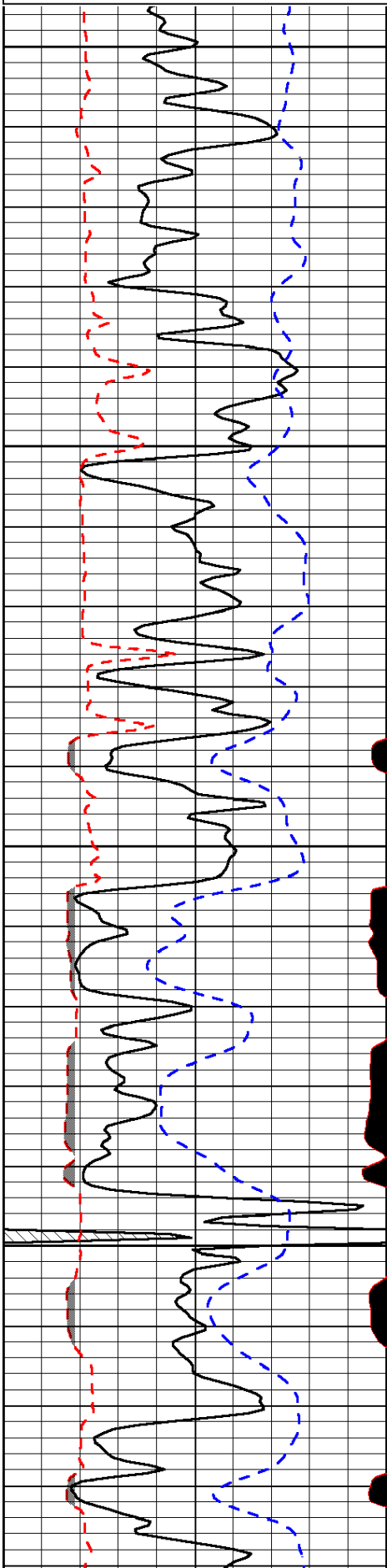
Hill City, 8 North to Y Road, 4 East to 310 Road, 1 North to Z Road, 1/2 East, South Into

Database File:	ainsworth_davis_4hd.db
Dataset Pathname:	dil/ainsstck
Presentation Format:	micro
Dataset Creation:	Sun Mar 01 23:04:51 2015
Charted by:	Depth in Feet scaled 1:240

0	Gamma Ray	150
6	MCAL (GAPI)	16
2.875	Mud Cake (GAPI)	7.875
-200	SP (mV)	0

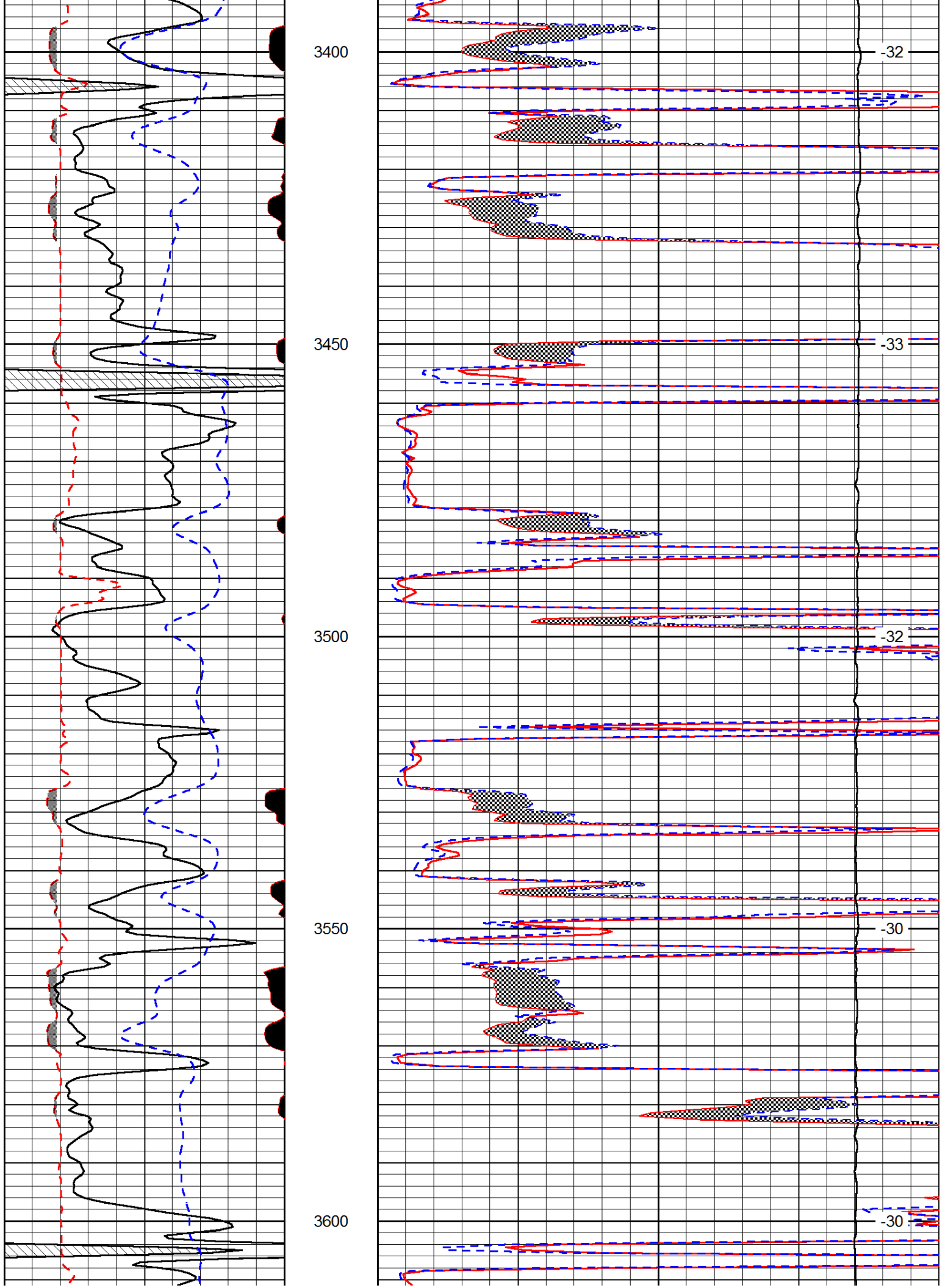
0	Micro Inverse 1 X 1	40
0	Micro Normal 2"	40
10000	Line Weight	0

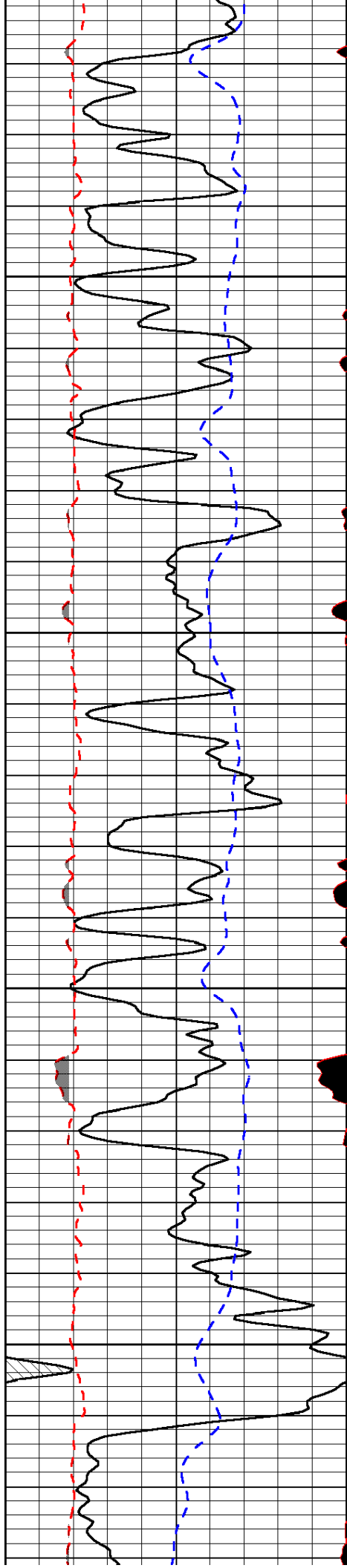
LSPD



3200
3250
3300
3350

-32
-32
-32
-32



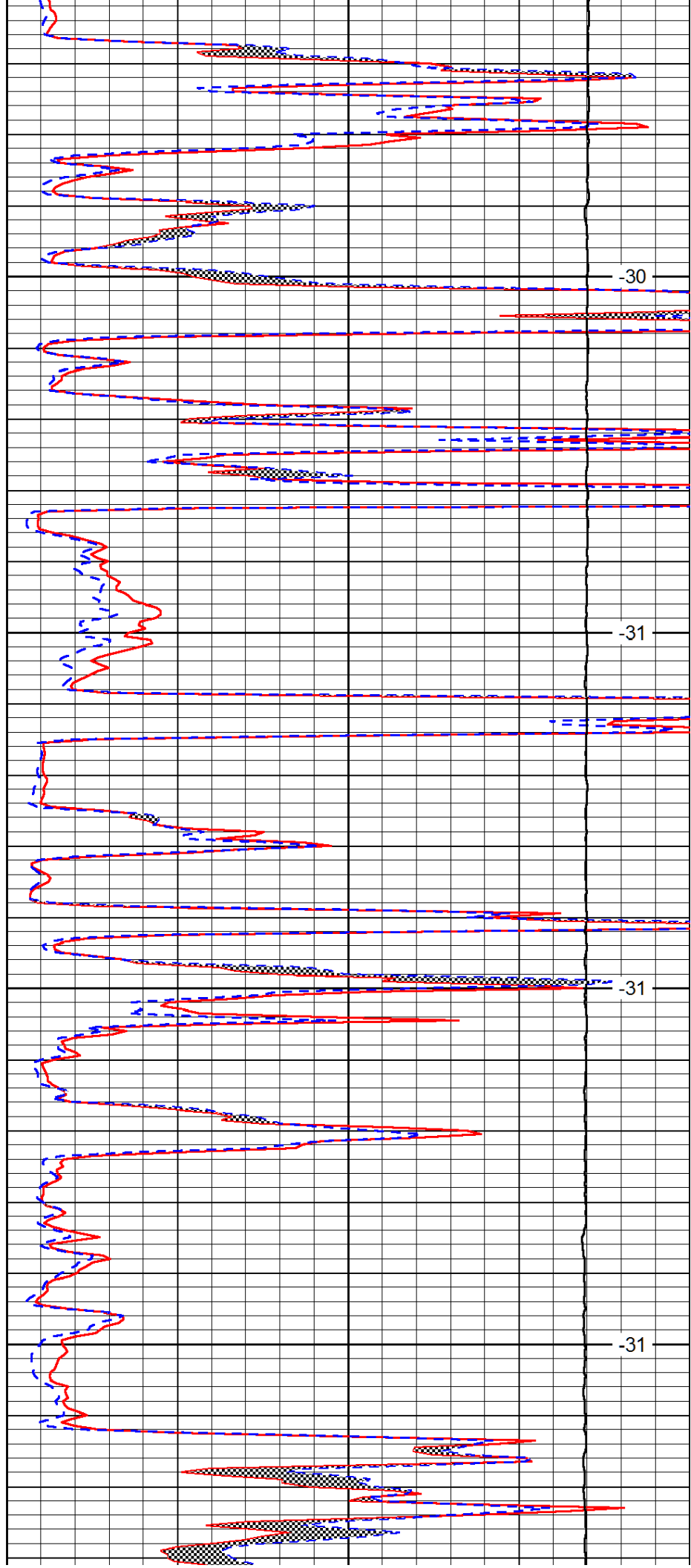


3650

3700

3750

3800

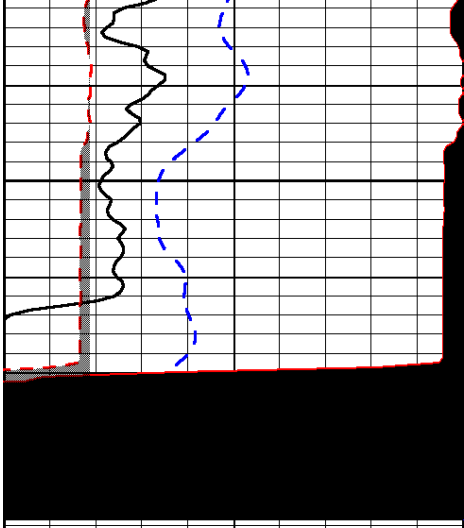


-30

-31

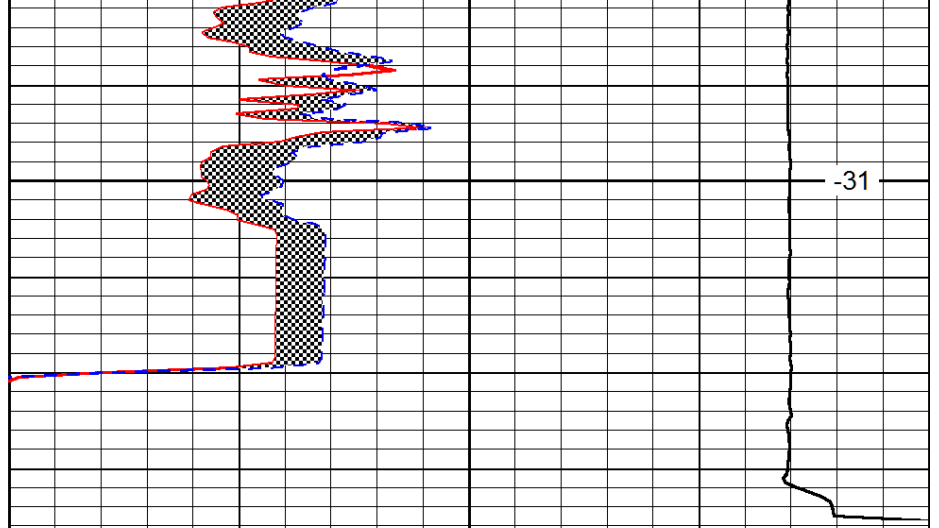
-31

-31



0	Gamma Ray	150
6	MCAL (GAPI)	16
2.875	Mud Cake (GAPI)	7.875
-200	SP (mV)	0

3850



0	Micro Inverse 1 X 1	40
0	Micro Normal 2"	40
10000	Line Weight	0

LSPD