



MICRO LOG

Company ELK ENERGY HOLDINGS, LLC.
 Well LEROY BRAUN #2
 Field HERZOG W
 County ELLIS
 State KANSAS

Company ELK ENERGY HOLDINGS, LLC.
 Well LEROY BRAUN #2
 Field HERZOG W
 County ELLIS
 State KANSAS

Location: API # : 15-051-26868-00-00
 1720' FSL & 160' FEL
 SEC 26 TWP 13S RGE 17W
 Permanent Datum GROUND LEVEL Elevation 1979'
 Log Measured From KELLY BUSHING 8' A.G.L.
 Drilling Measured From KELLY BUSHING
 Other Services CDL/CNL DIL
 Elevation K.B. 1987
 D.F. 1985
 G.L. 1979

Date	03/04/17
Run Number	TWO
Depth Driller	3660
Depth Logger	3661
Bottom Logged Interval	3655
Top Log Interval	2800
Casing Driller	8 5/8" @ 221
Casing Logger	221
Bit Size	7 7/8"
Type Fluid in Hole	CHEMICAL MUD
Density / Viscosity	9.2/53
pH / Fluid Loss	10.5/7.8
Source of Sample	FLOWLINE
Rm @ Meas. Temp	.70@62
Rmt @ Meas. Temp	.52@62
Rmc @ Meas. Temp	.84@62
Source of Rmf / Rmc	MEASURED
Rm @ BHT	20@113
Time Circulation Stopped	2 HOURS
Time Logger on Bottom	
Maximum Recorded Temperature	113F
Equipment Number	4010
Location	HAYS, KANSAS
Recorded By	GUS PFANENSTIEL
Witnessed By	SEAN DEENIHAN

<<< Fold Here >>>

All interpretations are opinions based on inferences from electrical or other measurements and we cannot and do not guarantee the accuracy or correctness of any interpretation, and we shall not, except in the case of gross or willful negligence on our part, be liable or responsible for any loss, costs, damages, or expenses incurred or sustained by anyone resulting from any interpretation made by any of our officers, agents or employees. These interpretations are also subject to our general terms and conditions set out in our current Price Schedule.

Comments

THANK YOU FOR USING ELI WIRELINE, HAYS, KS. (785) 628-6395

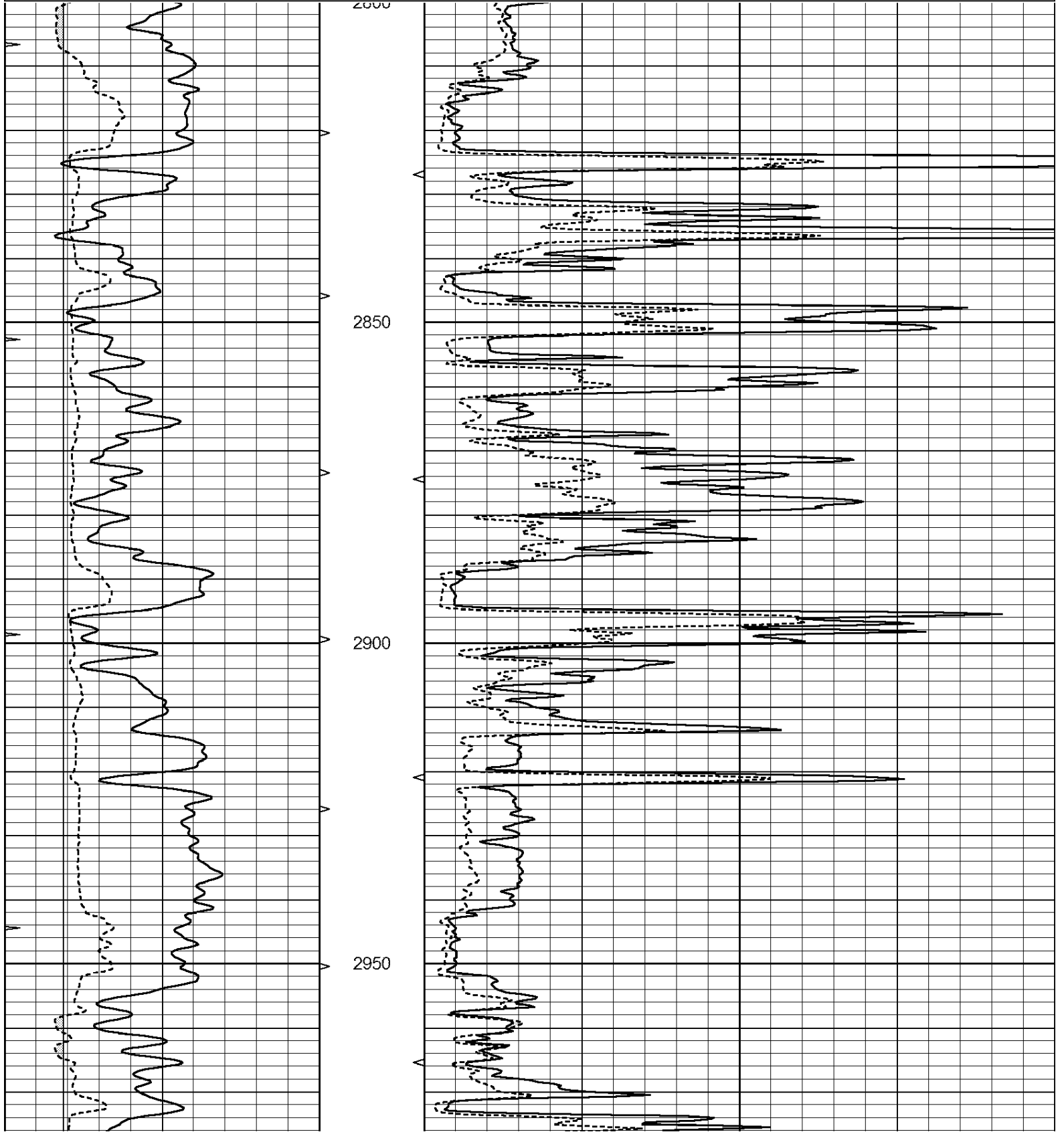
DIRECTIONS
 VICTORIA I70 EXIT 1/2 NORTH TO AIRBASE RD.
 1 WEST, NORTH 1/2
 WEST INTO

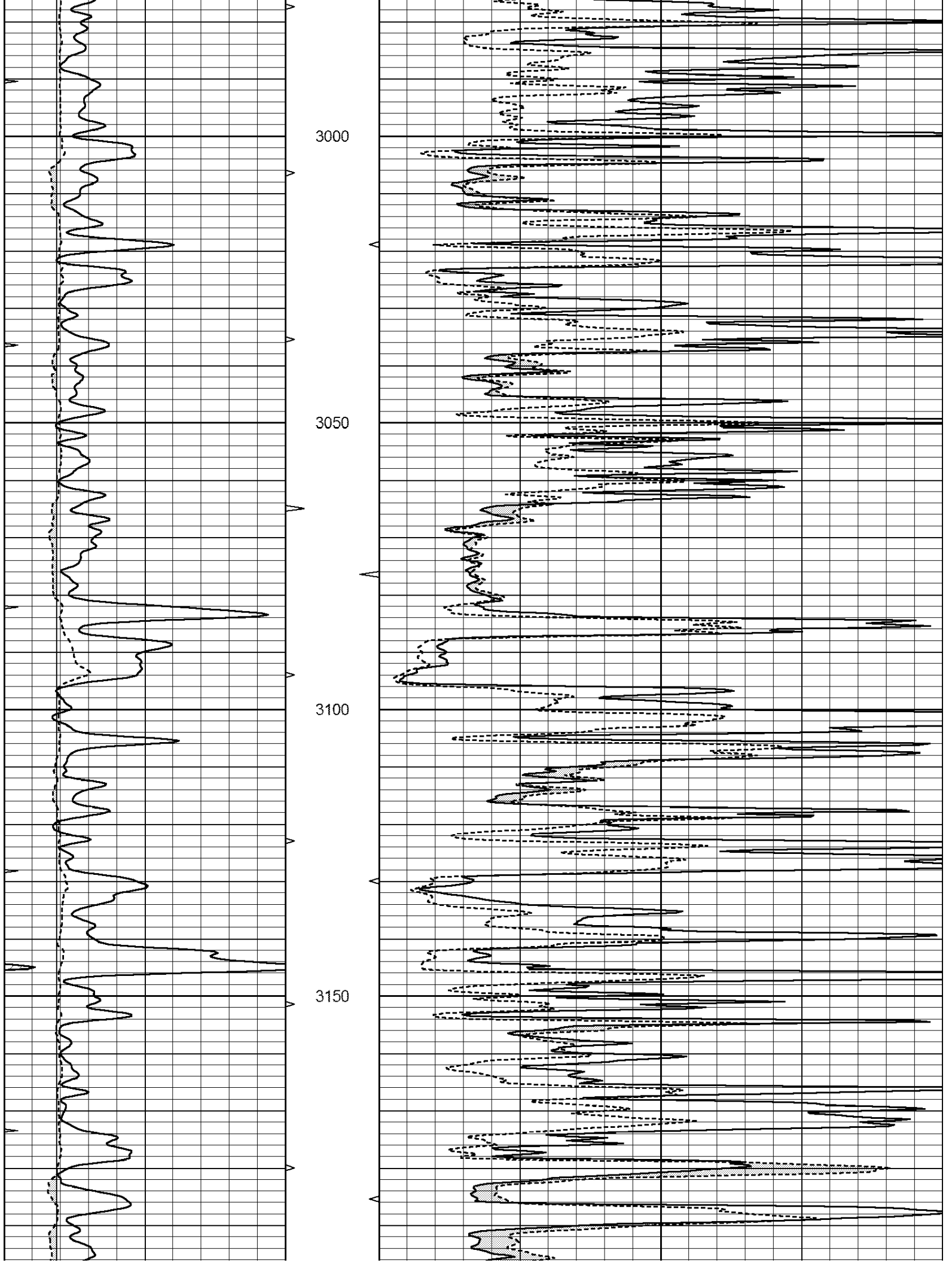


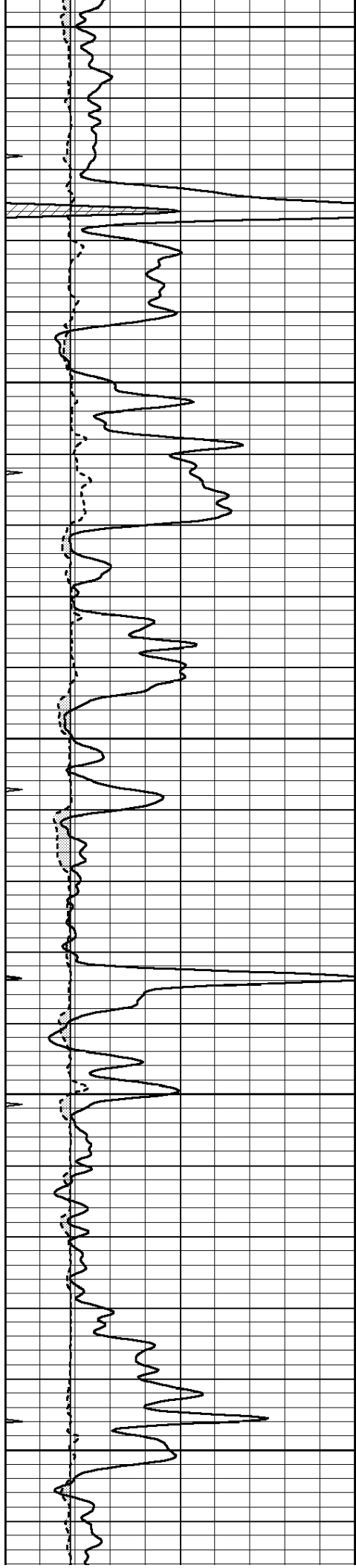
MAIN PASS

Database File: 1453ddn.db
 Dataset Pathname: pass5.1
 Presentation Format: _micro
 Dataset Creation: Sat Mar 04 20:04:57 2017 by Calc Open-Cased 090629
 Charted by: Depth in Feet scaled 1:240

0	GAMMA RAY (GAPI)	150	ABHV	0	MEL1.5 (Ohm-m)	40
6	CALIPER (in)	16	10 (ft3)	0	MEL2.0 (Ohm-m)	40
0	MINMK	20	TBHV			
			0 (ft3)	10		







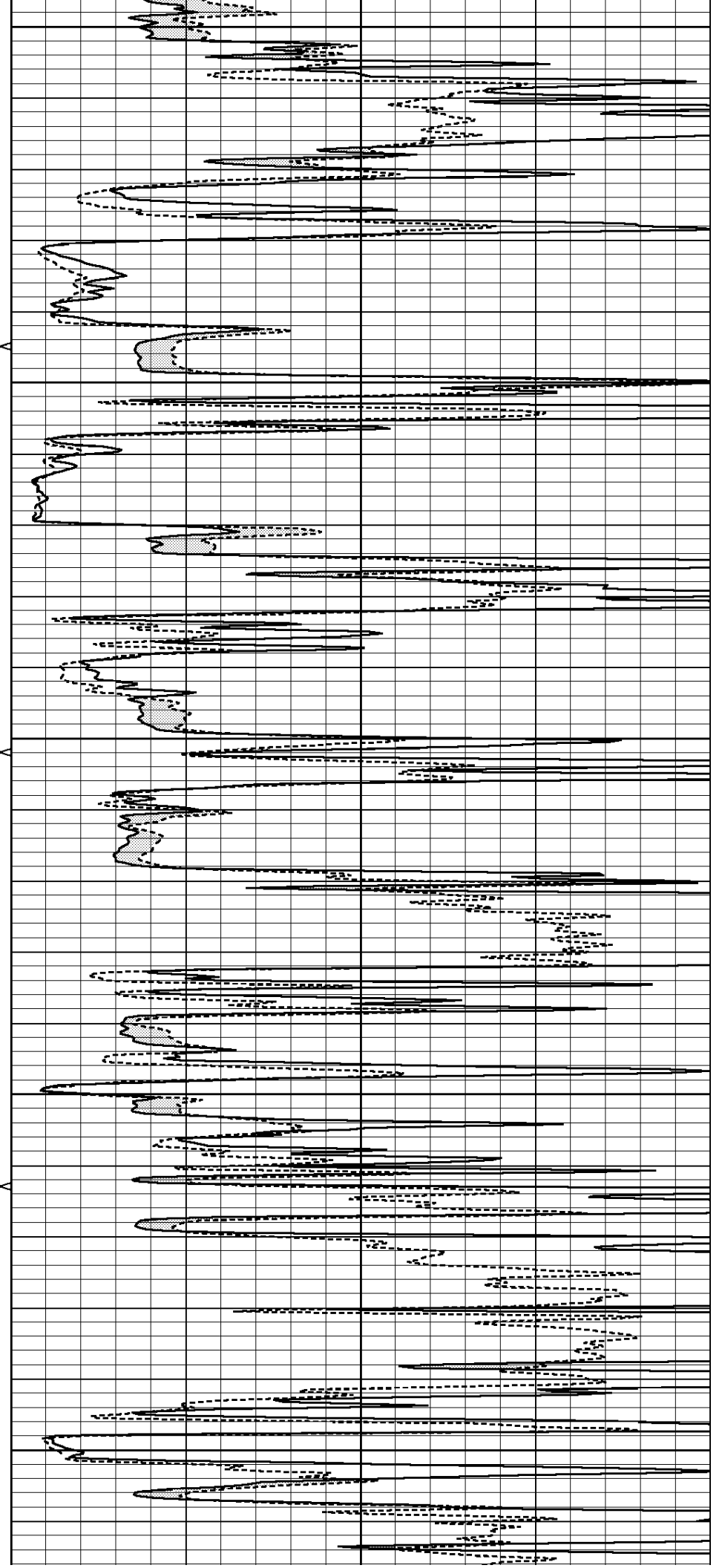
3200

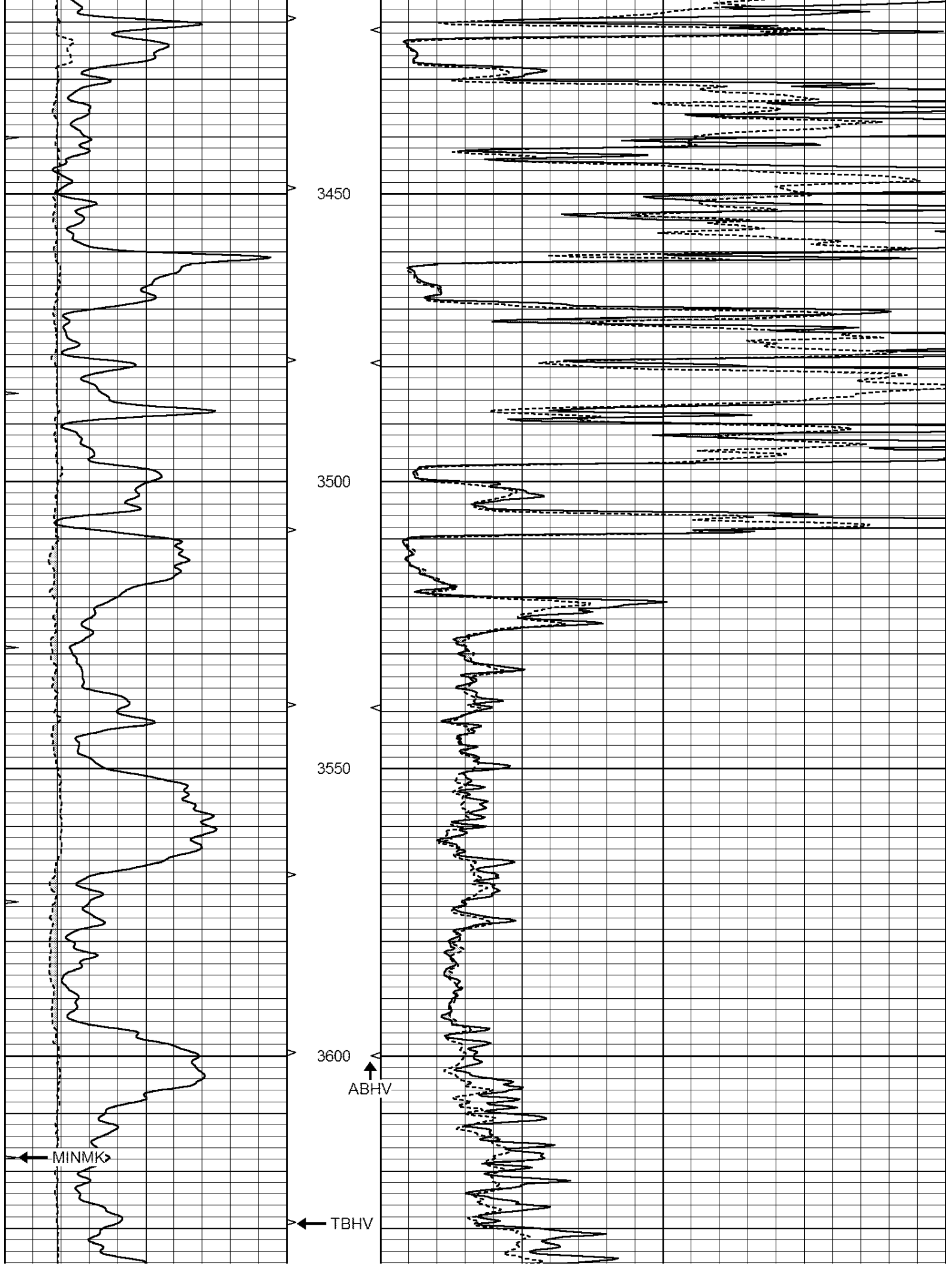
3250

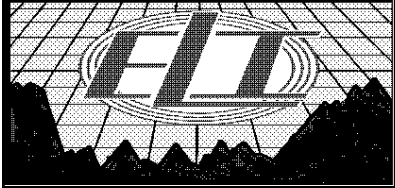
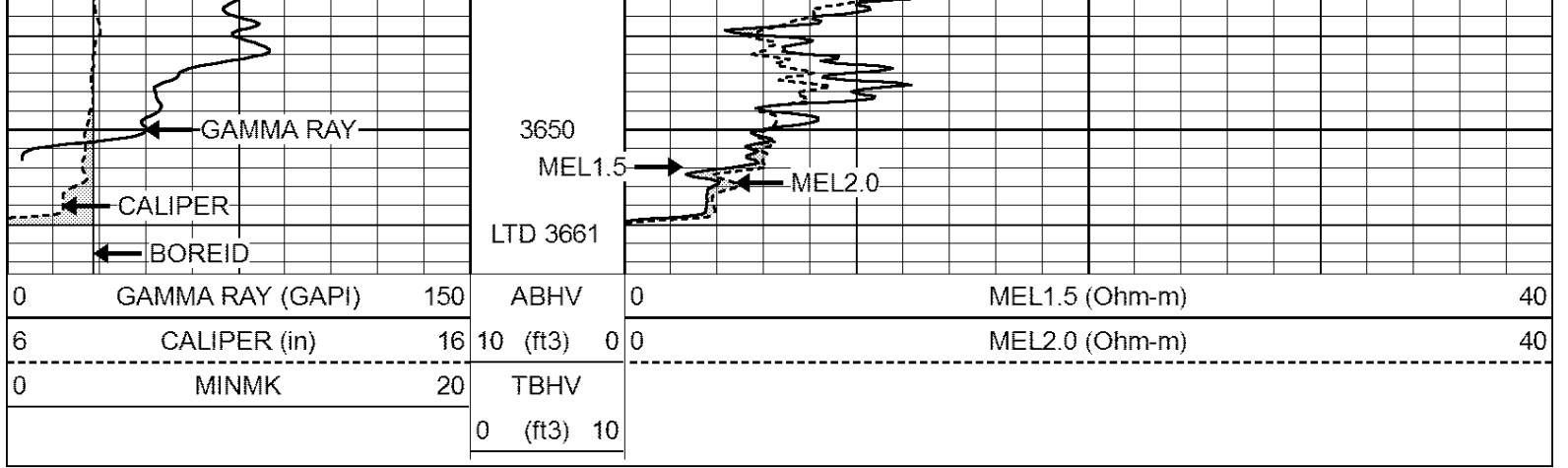
3300

3350

3400



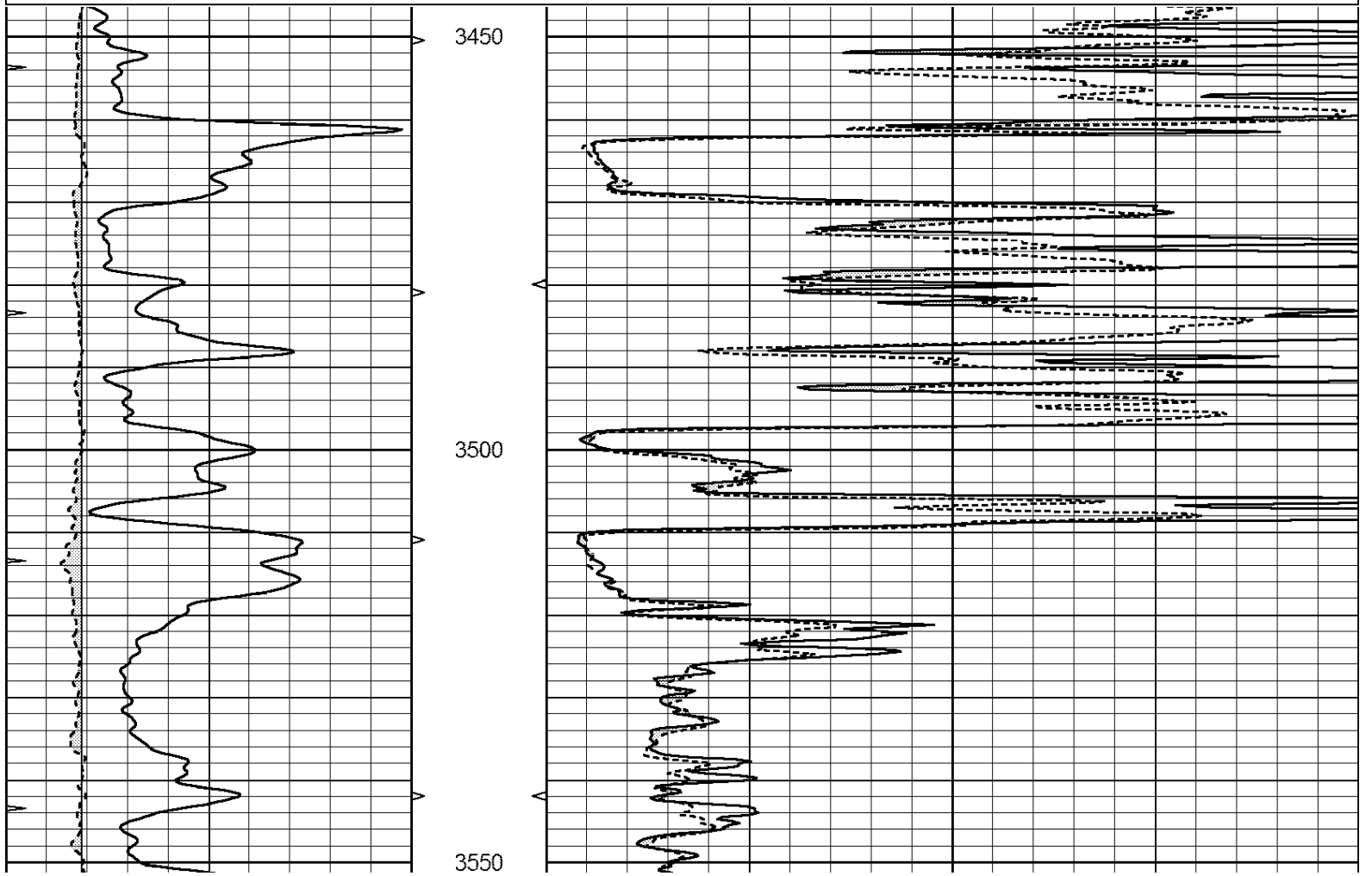


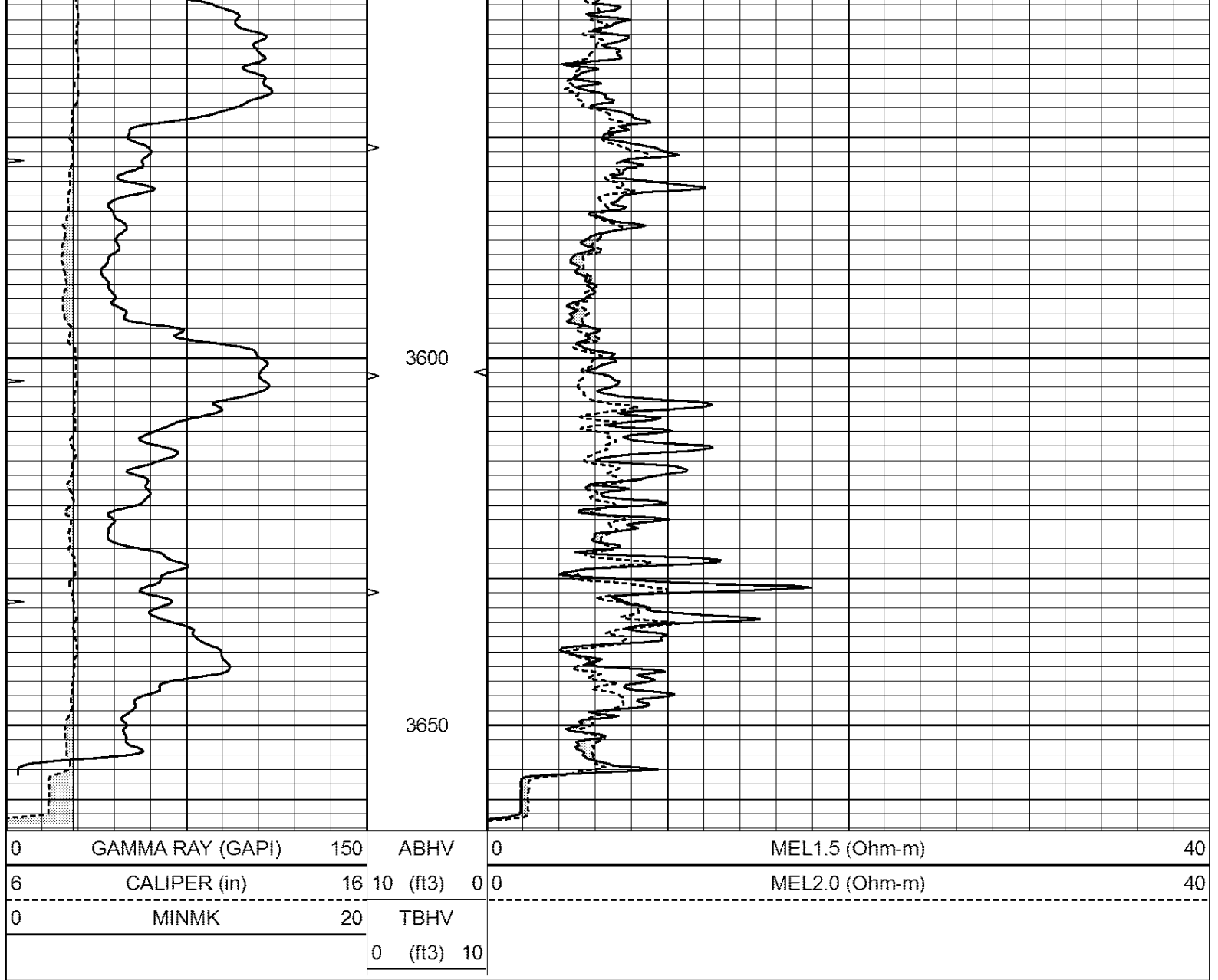


REPEAT SECTION

Database File: 1453ddn.db
 Dataset Pathname: pass4RP
 Presentation Format: _micro
 Dataset Creation: Sat Mar 04 20:02:54 2017 by Calc Open-Cased 090629
 Charted by: Depth in Feet scaled 1:240

0	GAMMA RAY (GAPI)	150	ABHV	0	MEL1.5 (Ohm-m)	40
6	CALIPER (in)	16	10 (ft3)	0	MEL2.0 (Ohm-m)	40
0	MINMK	20	TBHV			
			0 (ft3)	10		





Calibration Report

Database File: 1453ddn.db
 Dataset Pathname: pass4RP
 Dataset Creation: Sat Mar 04 20:02:54 2017 by Calc Open-Cased 090629

MICRO Calibration Report

Serial Number: MICRO6
 Tool Model: PROBE
 Performed: Wed Aug 26 00:34:46 2015

Caliper Calibration: Gain=3.960 Offset=4.401
 References Low Cal High Cal
 Readings 7.000 14.000
 0.555 2.323

1.5" Calibration: Gain=38.075 Offset=-0.400
 References Low Cal High Cal
 Readings 0.000 20.000
 0.004 1.196

2" Calibration: Gain=48.000 Offset=-1.000

References	Low Cal	High Cal
	0.000	20.000
Readings	0.006	0.913

Gamma Ray Calibration Report

Serial Number:	#8	
Tool Model:	OPEN	
Performed:	Sun Aug 17 13:24:21 2014	
Calibrator Value:	150.0	GAPI
Background Reading:	0.0	cps
Calibrator Reading:	175.0	cps
Sensitivity:	0.6700	GAPI/cps