



**COMPLETION
& PRODUCTION
SERVICES CO.**

**SONIC
LOG**

Company SHELBY RESOURCES, LLC.
Well JERRY'S UNIT #1-15
Field WILDCAT
County BARTON
State KANSAS

Company SHELBY RESOURCES, LLC.
Well JERRY'S UNIT #1-15
Field WILDCAT
County BARTON State KANSAS

Location: API # : 15-009-26100-0000
SEC 15 TWP 18S RGE 14W
Permanent Datum GROUND LEVEL Elevation 1926
Log Measured From KELLY BSUHING 13' A.G.L.
Drilling Measured From KELLY BUSHING
Other Services
CDL/CNL
DIL/MEL
Elevation
K.B. 1939
D.F. 1937
G.L. 1926

Date	5/10/15		
Run Number	TWO		
Depth Driller	3570		
Depth Logger	3571		
Bottom Logged Interval	3558		
Top Log Interval	900		
Casing Driller	8 5/8"@947'		
Casing Logger	944		
Bit Size	7 7/8"		
Type Fluid in Hole	CHEMICAL MUD	CHLORIDES 3,000 PPM	
Density / Viscosity	8.8/58		
pH / Fluid Loss	10.0/8.0		
Source of Sample	FLOWLINE		
Rm @ Meas. Temp	.800@75F		
Rmt @ Meas. Temp	.600@75F		
Rmc @ Meas. Temp	.960@75F		
Source of Rmf / Rmc	MEASUREMENT		
Rm @ BHT	.536@112F		
Time Circulation Stopped	3.5 HOURS		
Time Logger on Bottom	7:30 P.M.		
Maximum Recorded Temperature	112F		
Equipment Number	4010		
Location	HAYS, KANSAS		
Recorded By	JEFF LUEBBERS		
Witnessed By	JEREMY SCHWARTZ		

<<< Fold Here >>>

All interpretations are opinions based on inferences from electrical or other measurements and we cannot and do not guarantee the accuracy or correctness of any interpretation, and we shall not, except in the case of gross or willful negligence on our part, be liable or responsible for any loss, costs, damages, or expenses incurred or sustained by anyone resulting from any interpretation made by any of our officers, agents or employees. These interpretations are also subject to our general terms and conditions set out in our current Price Schedule.

Comments

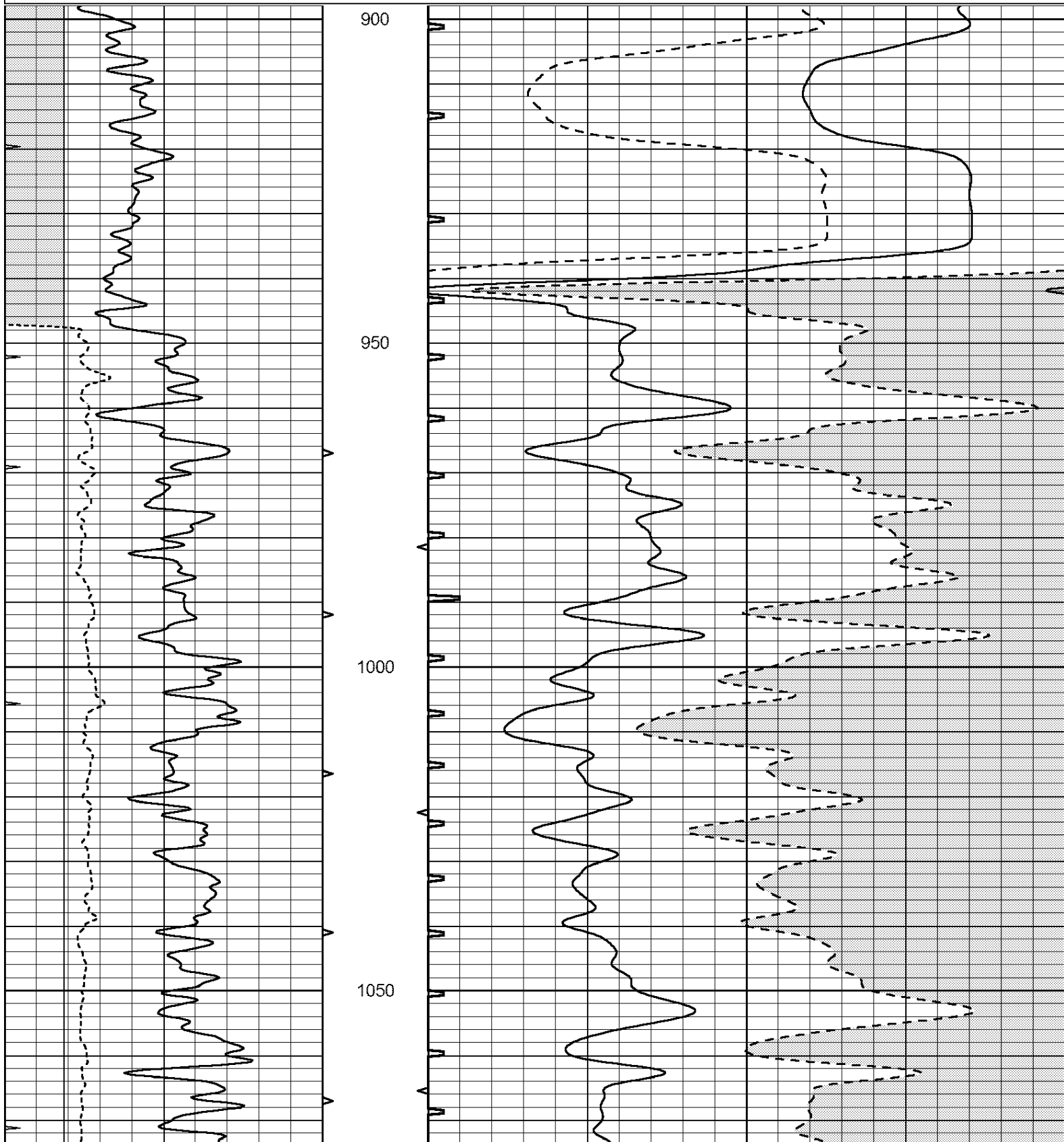
THANK YOU FOR USING "NABORS" HAYS, KANSAS (785) 628-6395
HOISINGTON, KS. W. TO TO "HWY 4 & 281) 3S. ON "BOYD RD." TO "NW 90TH", 1/2W., S. INTO

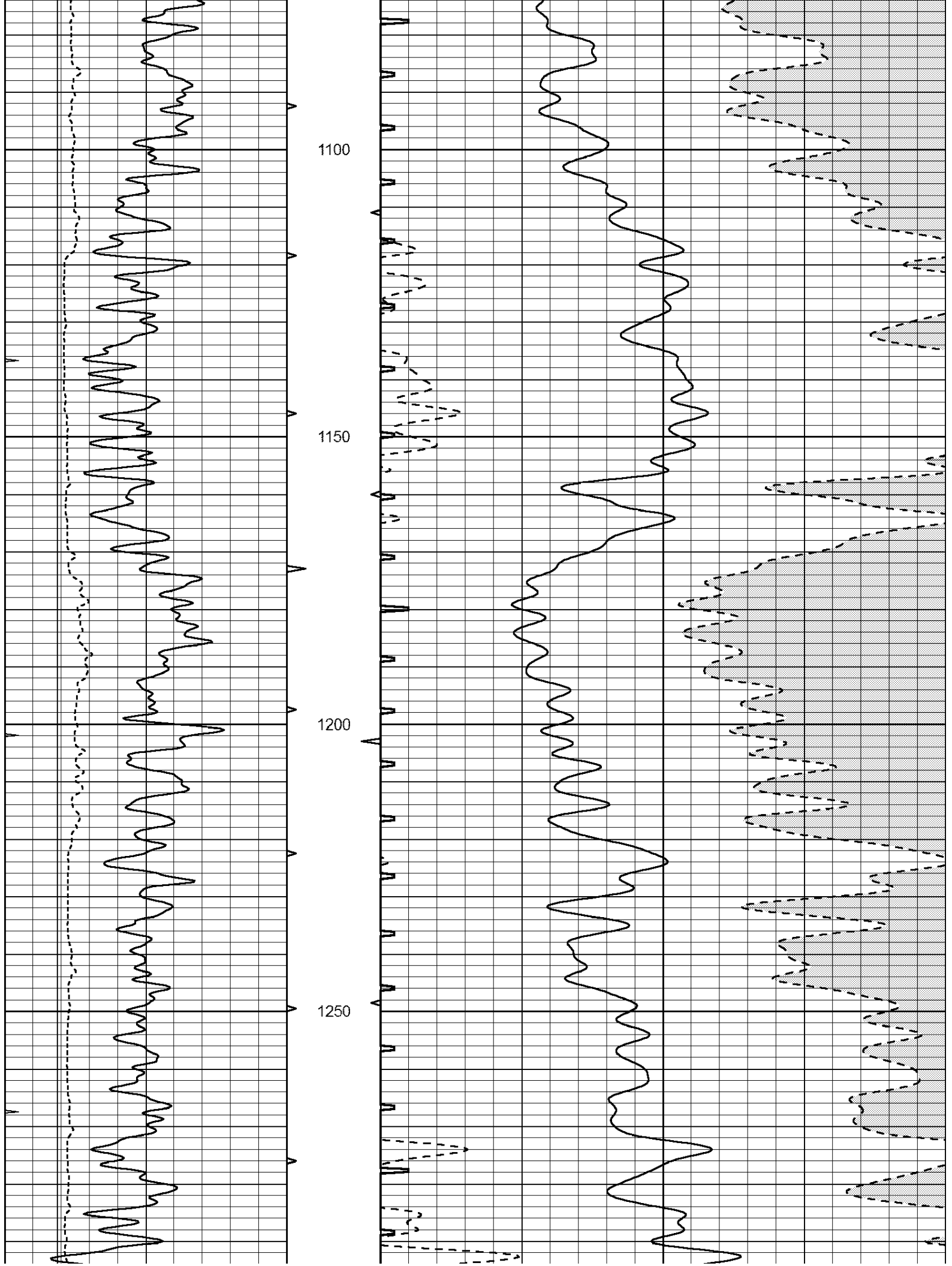


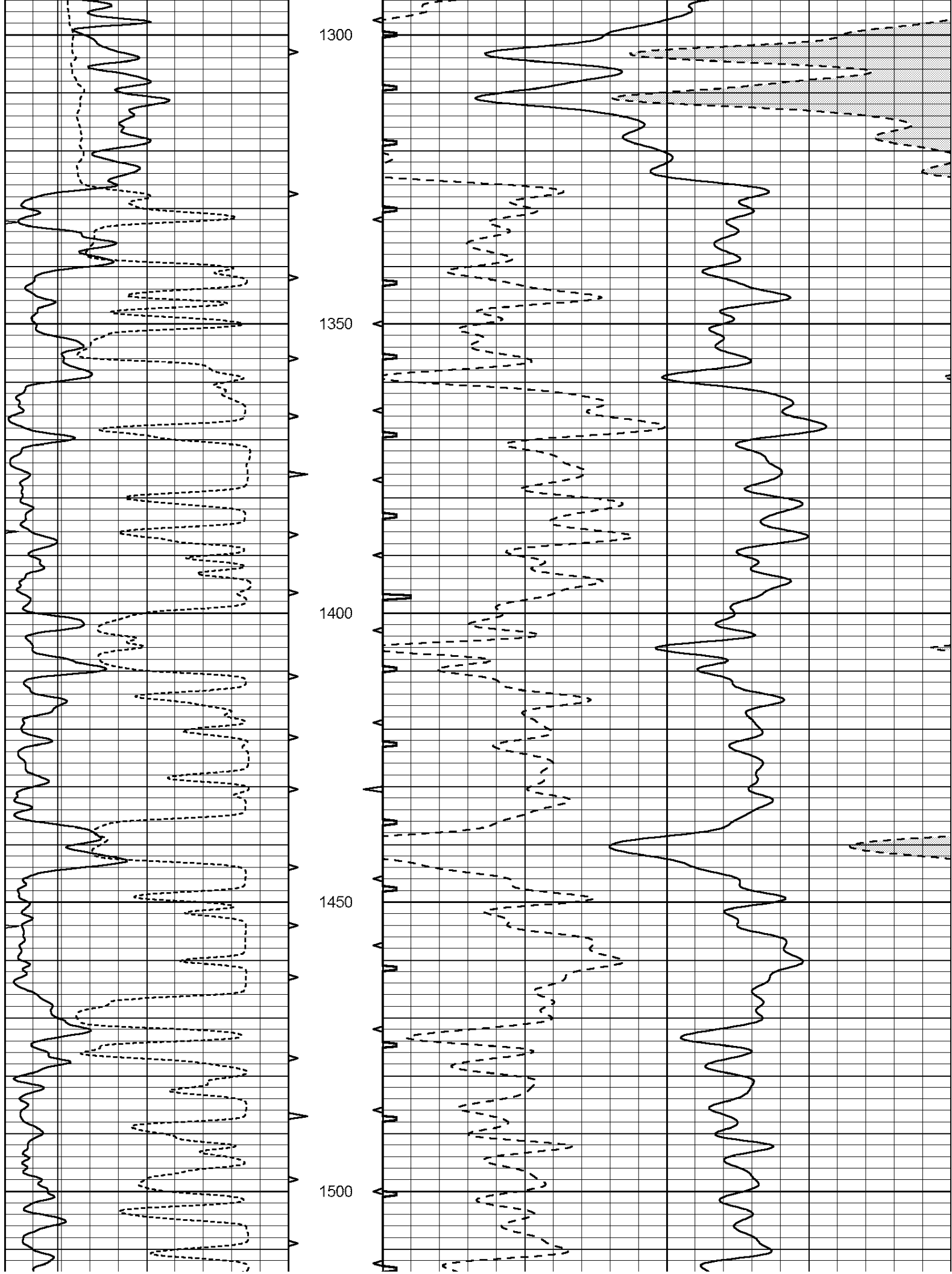
MAIN SECTION

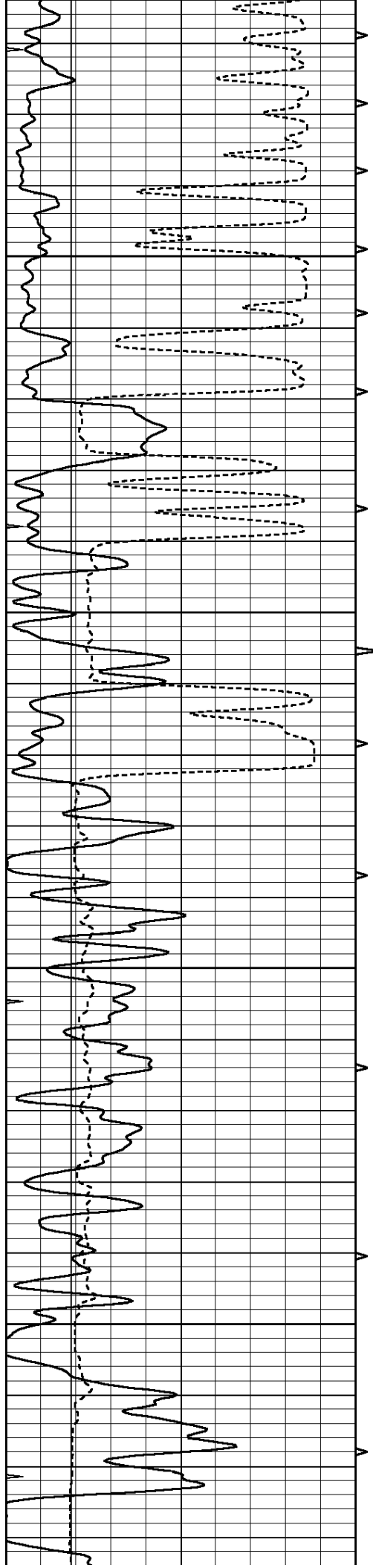
Database File: 30504ddn.db
 Dataset Pathname: pass7.3
 Presentation Format: slt
 Dataset Creation: Sun May 10 23:13:25 2015 by Calc Open-Cased 090629
 Charted by: Depth in Feet scaled 1:240

0	GAMMA RAY (GAPI)	150	ABHV	140	DELTA TIME (usec/ft)	40
6	CALIPER (in)	16	10 (ft3) 0	30	SONIC POROSITY (pu)	-10
0	MINMK	20	TBHV	0	ITT (msec)	20
			0 (ft3) 10			







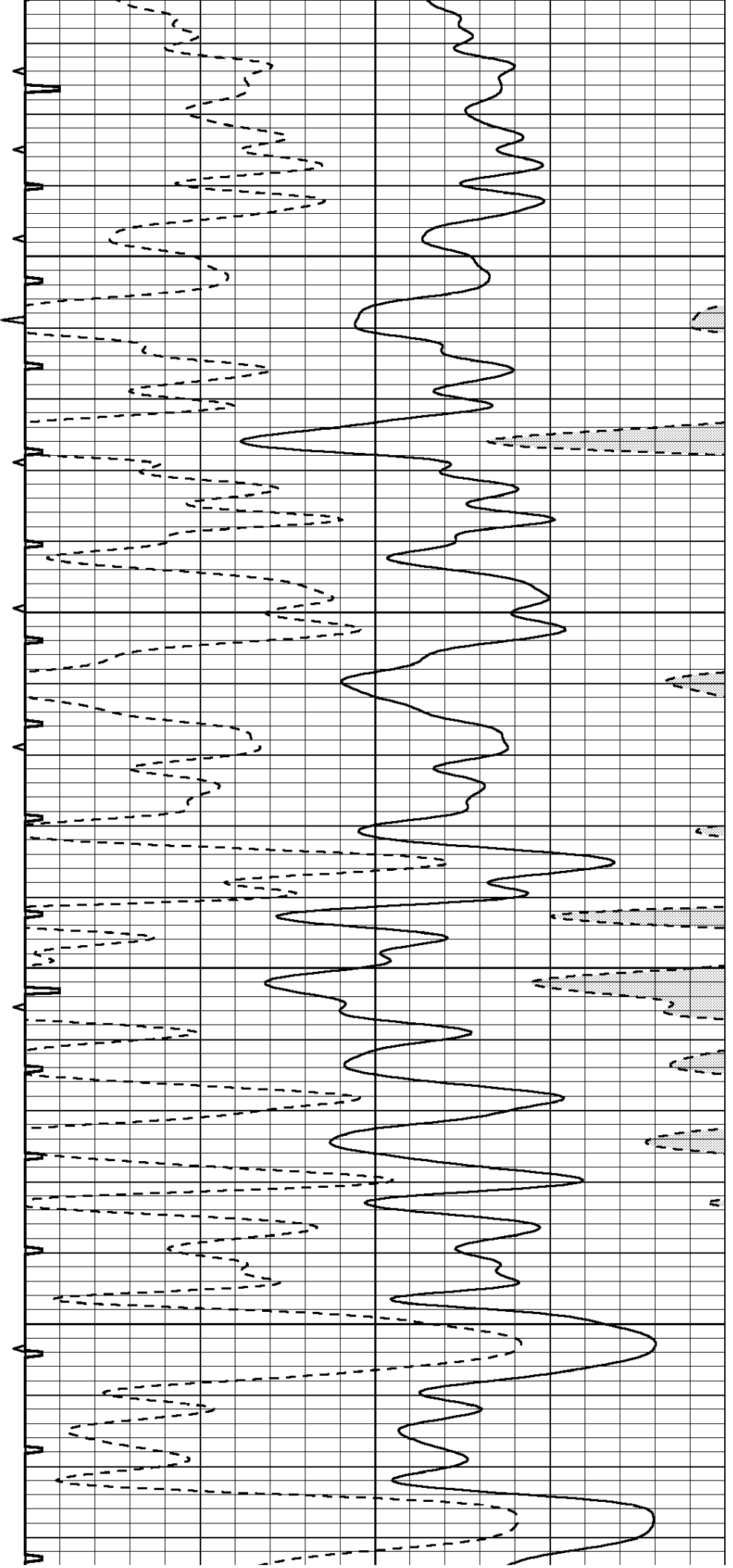


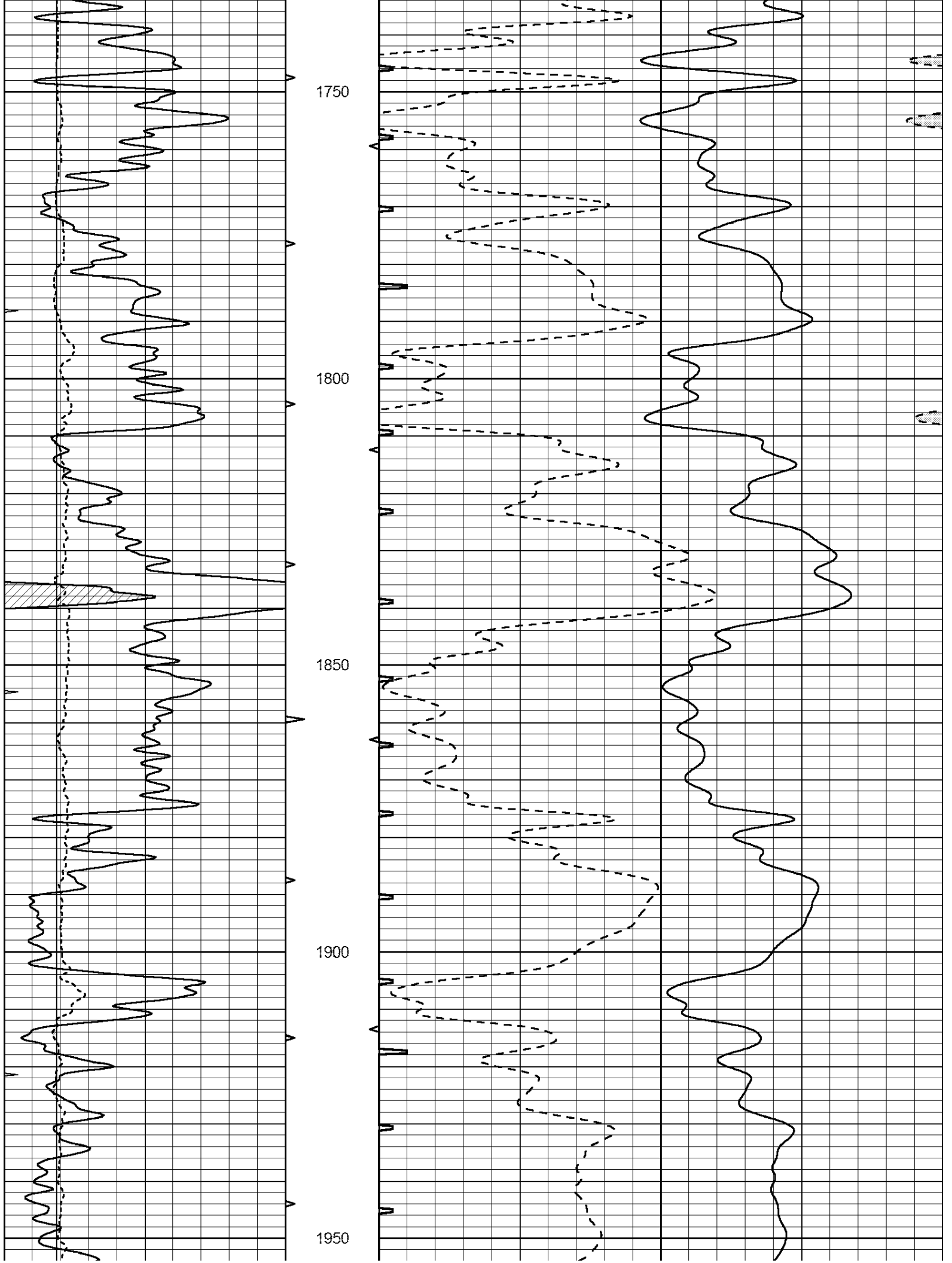
1550

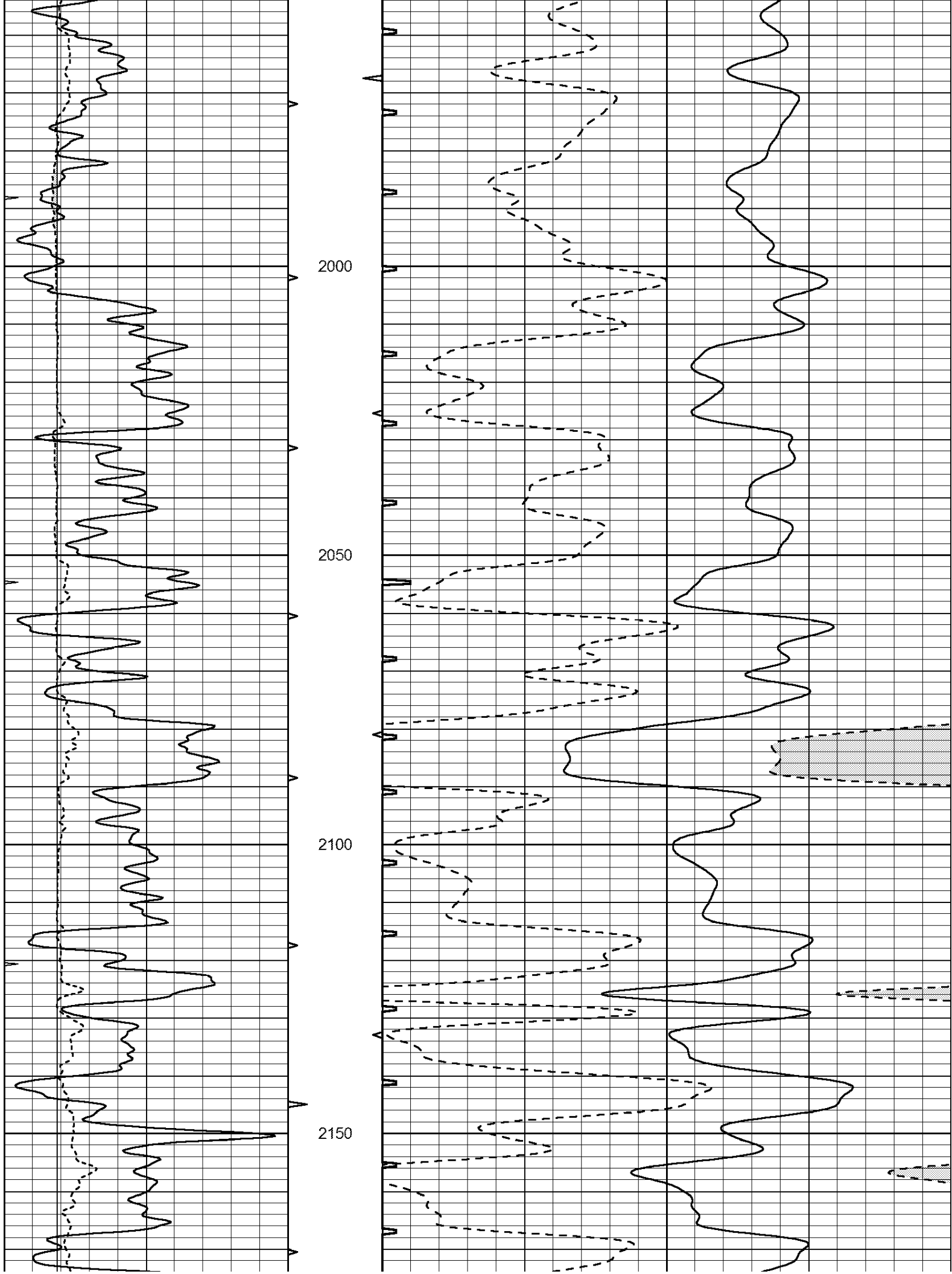
1600

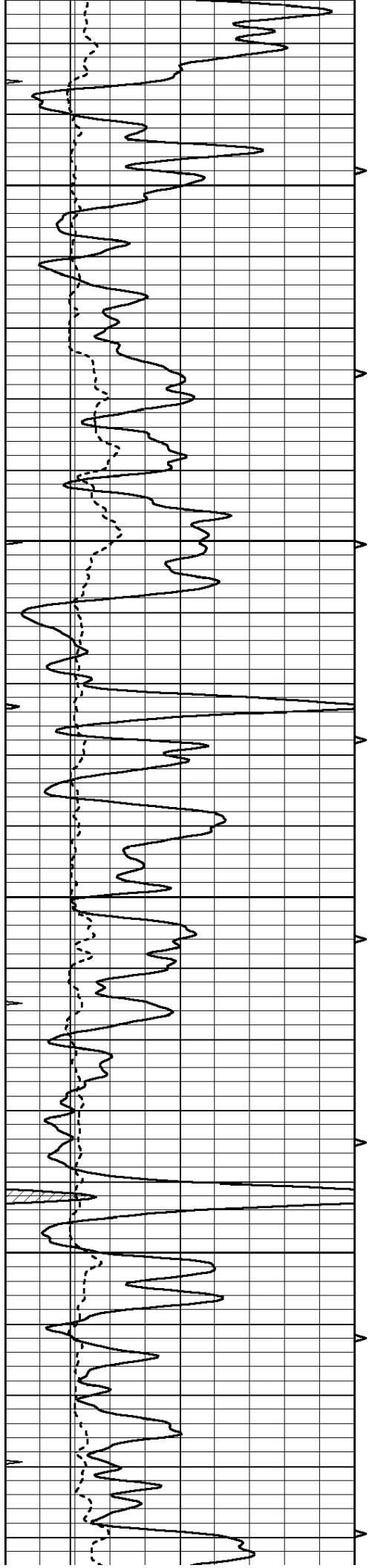
1650

1700







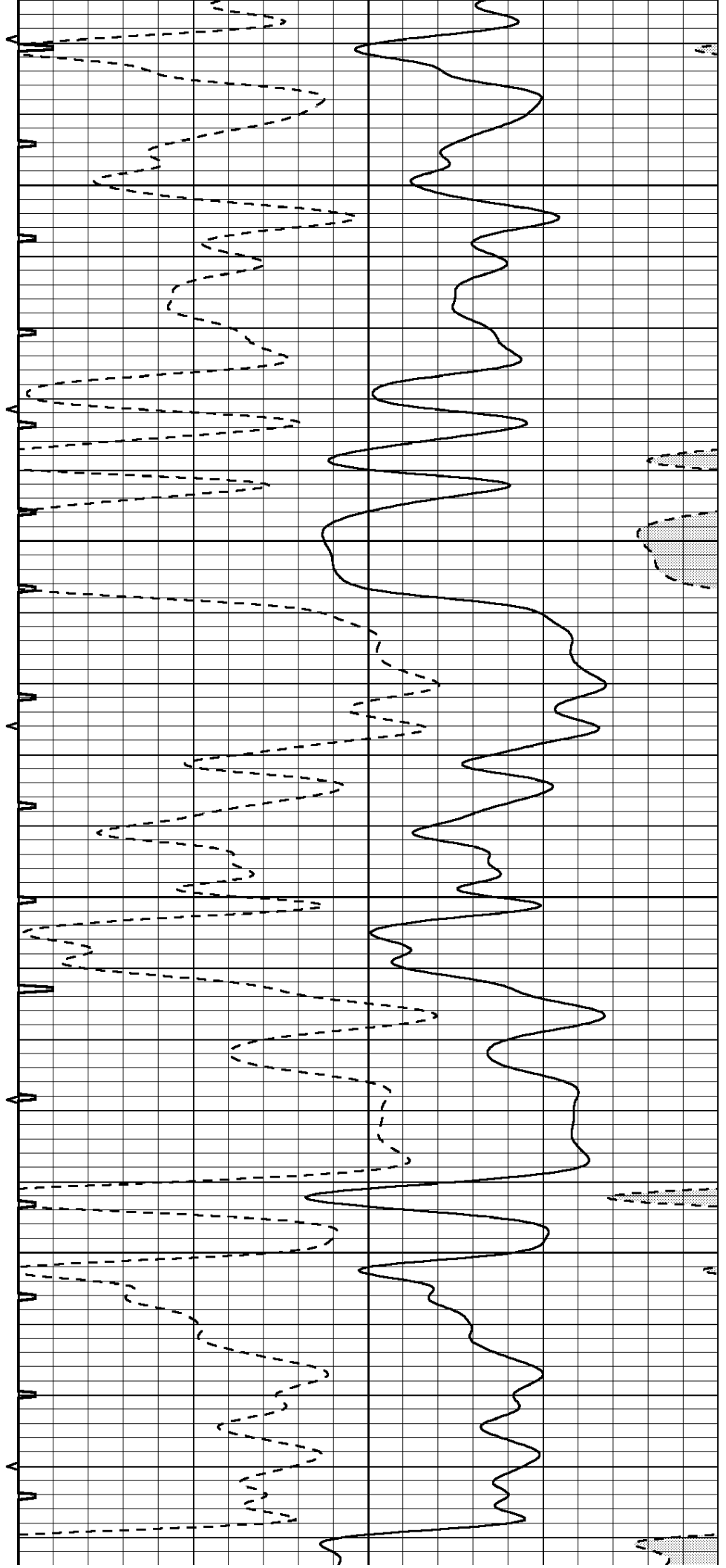


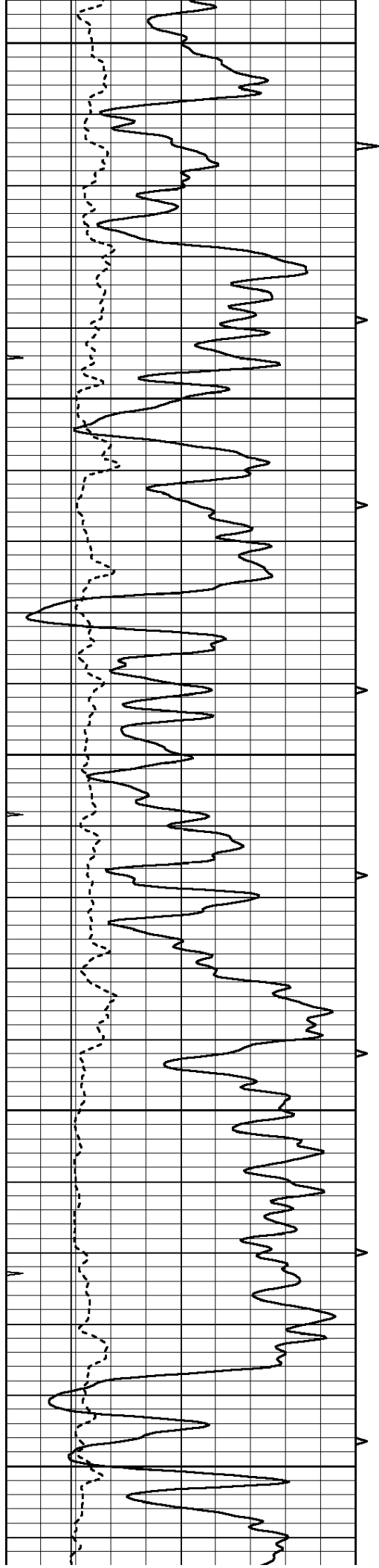
2200

2250

2300

2350





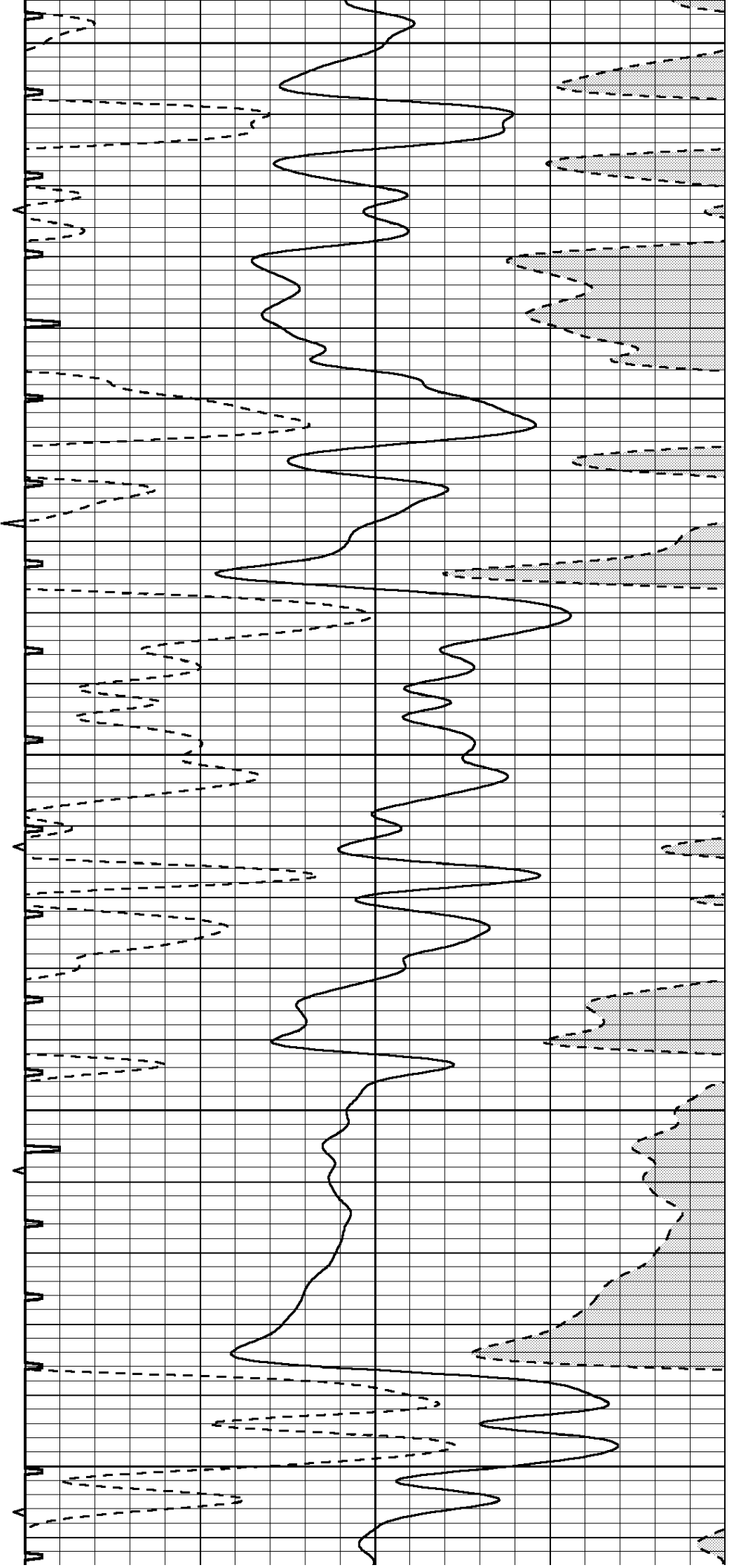
2400

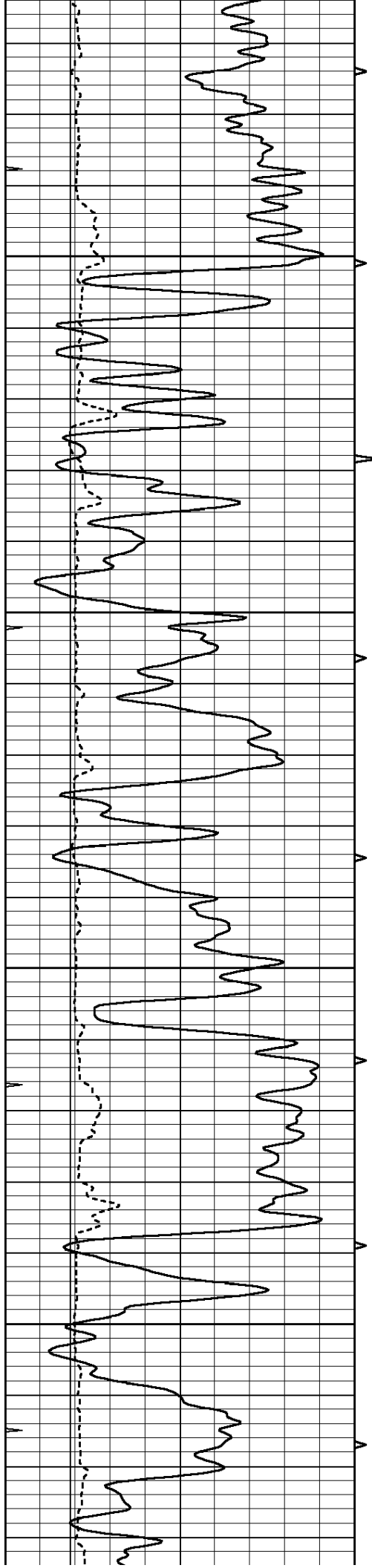
2450

2500

2550

2600



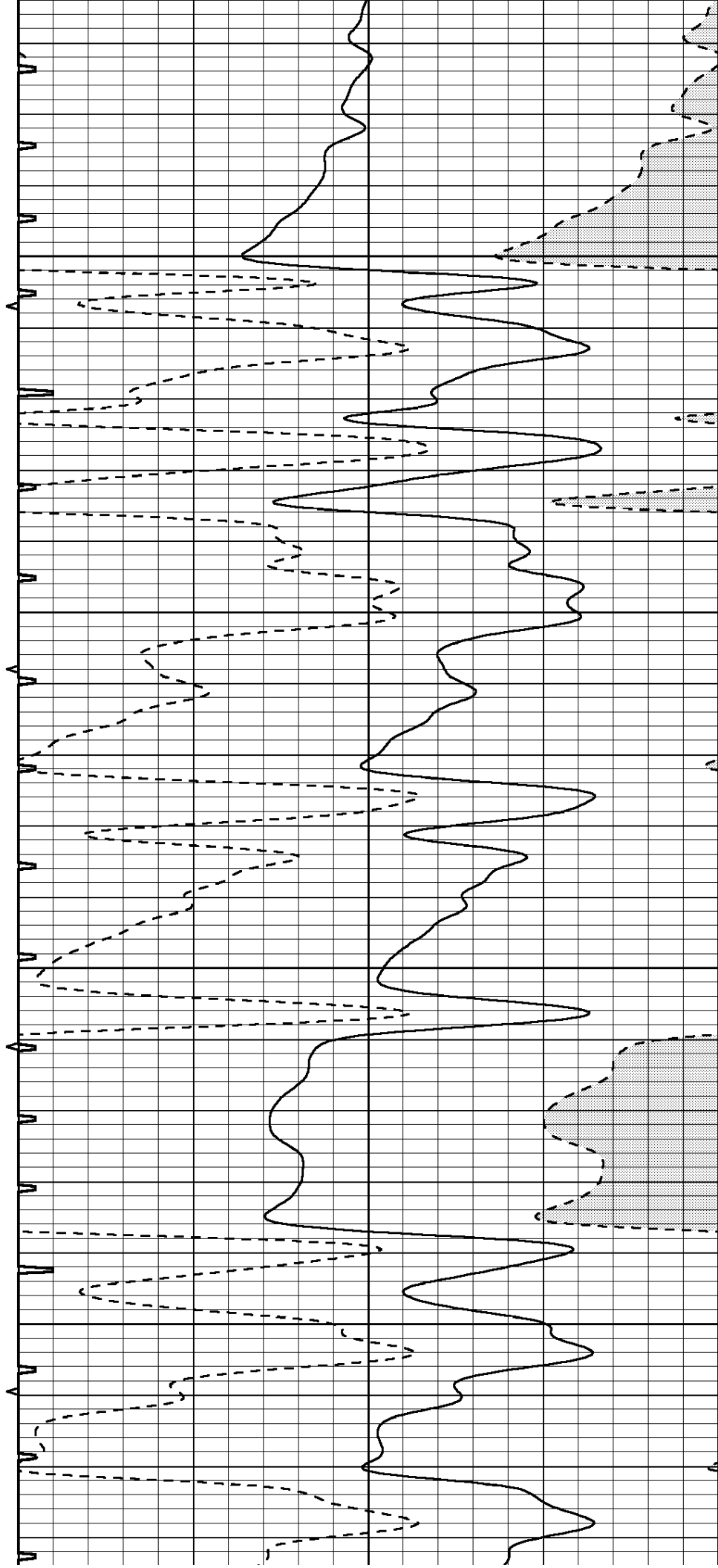


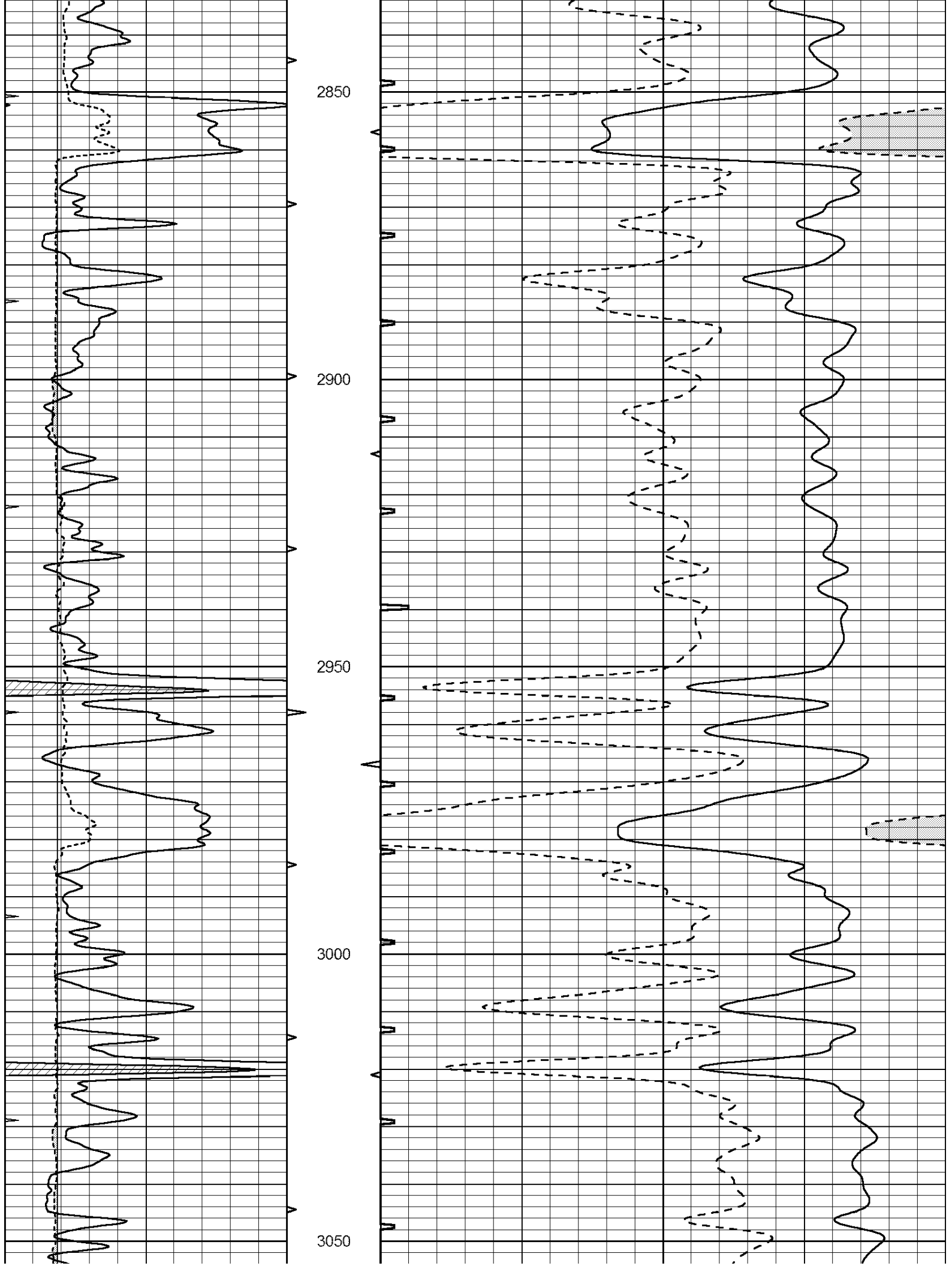
2650

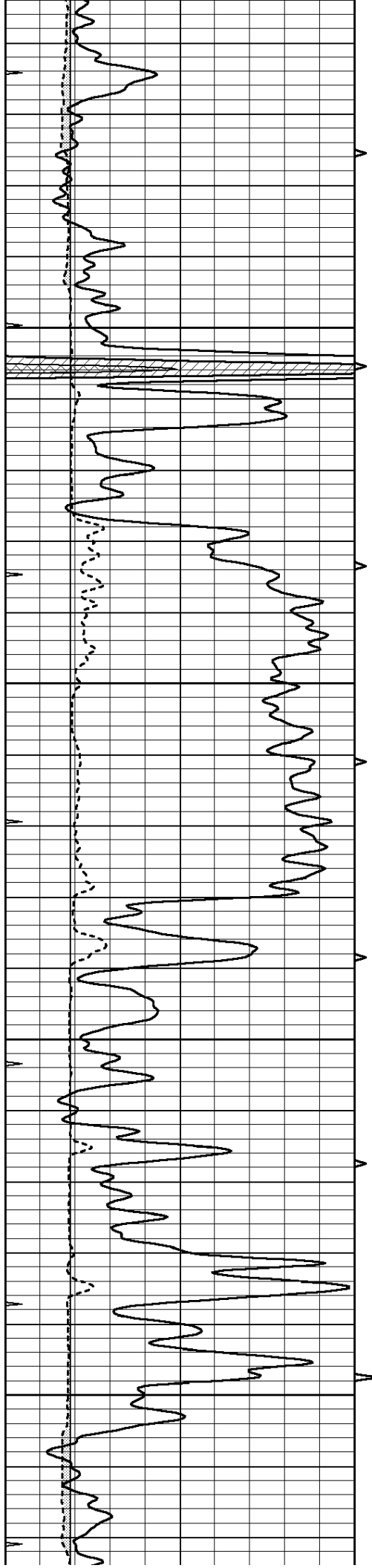
2700

2750

2800





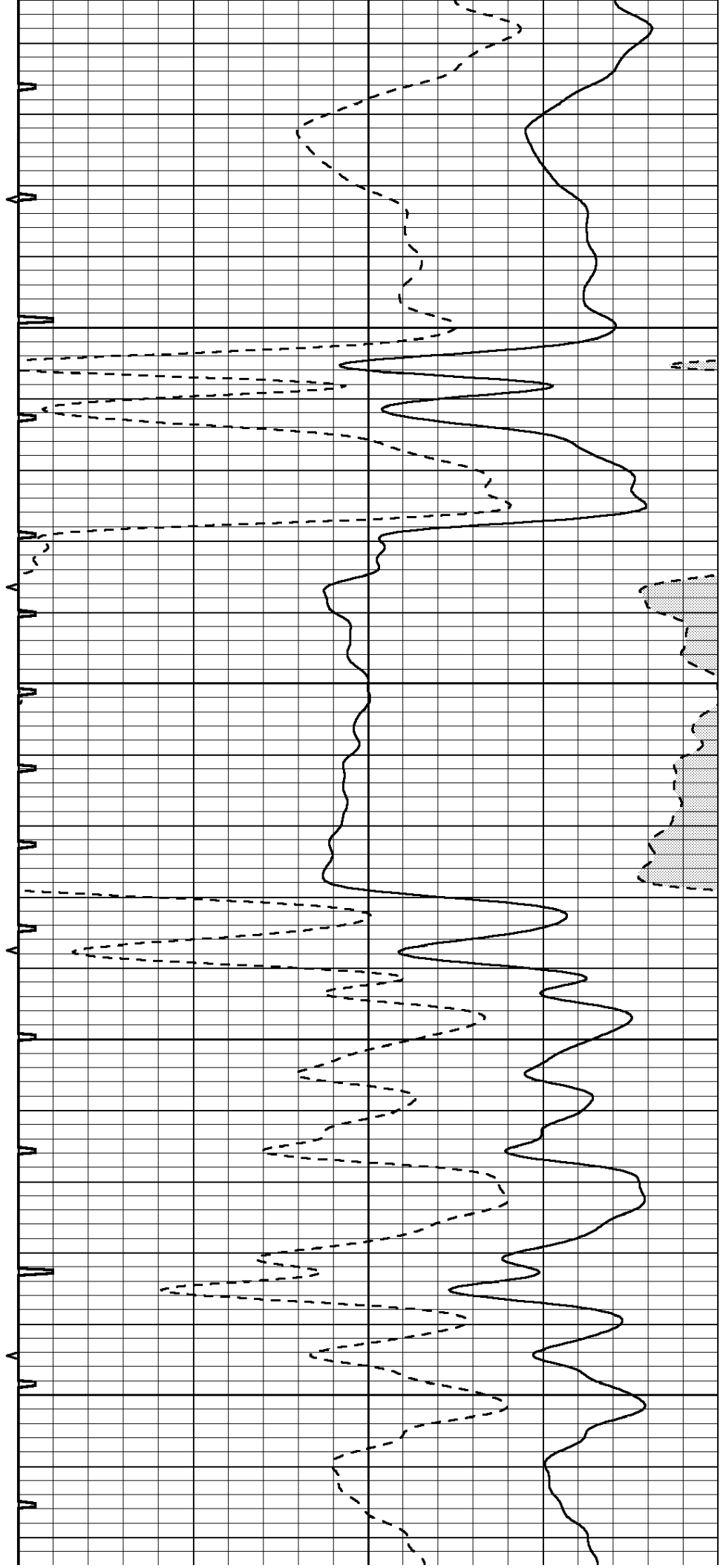


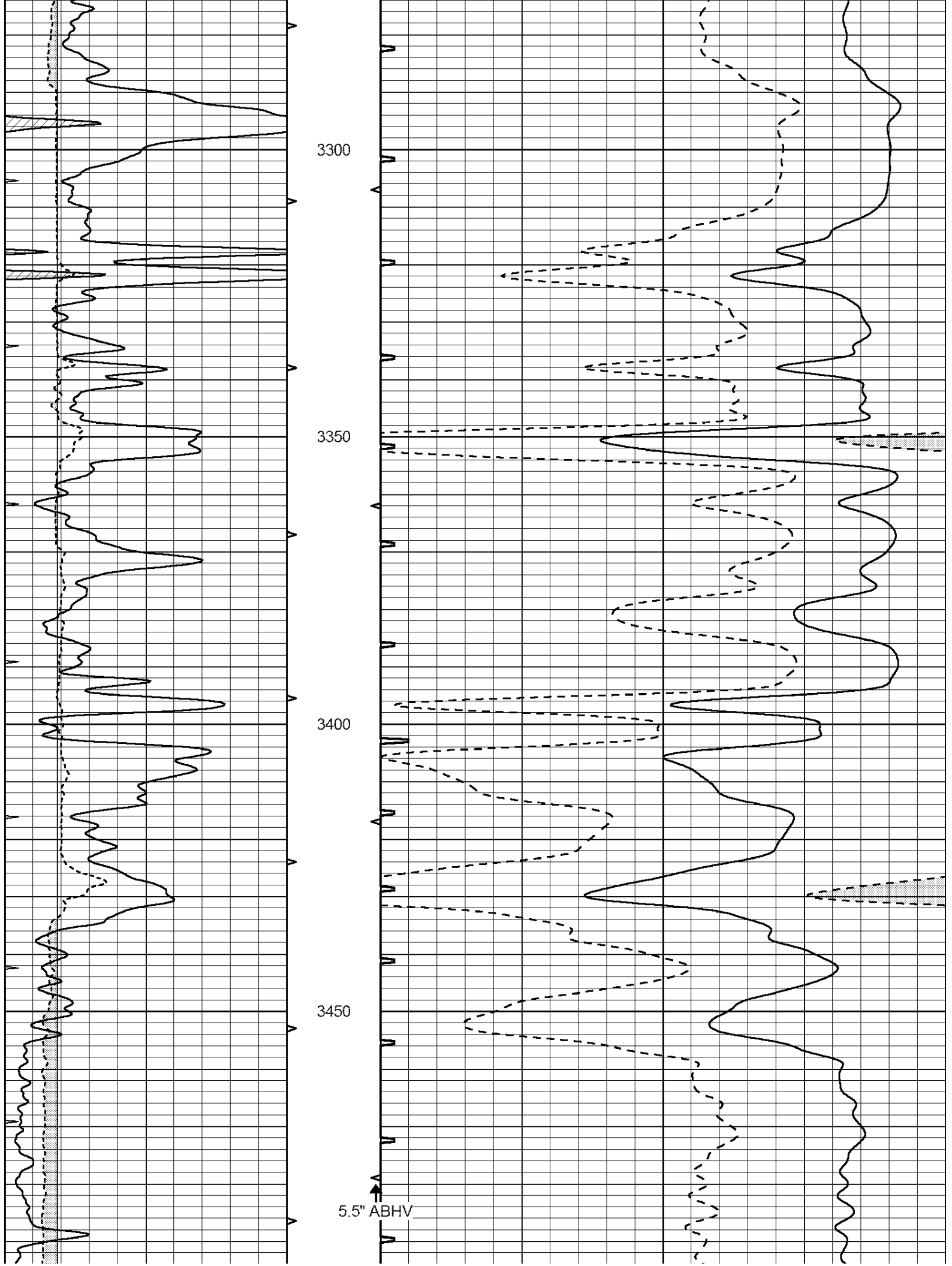
3100

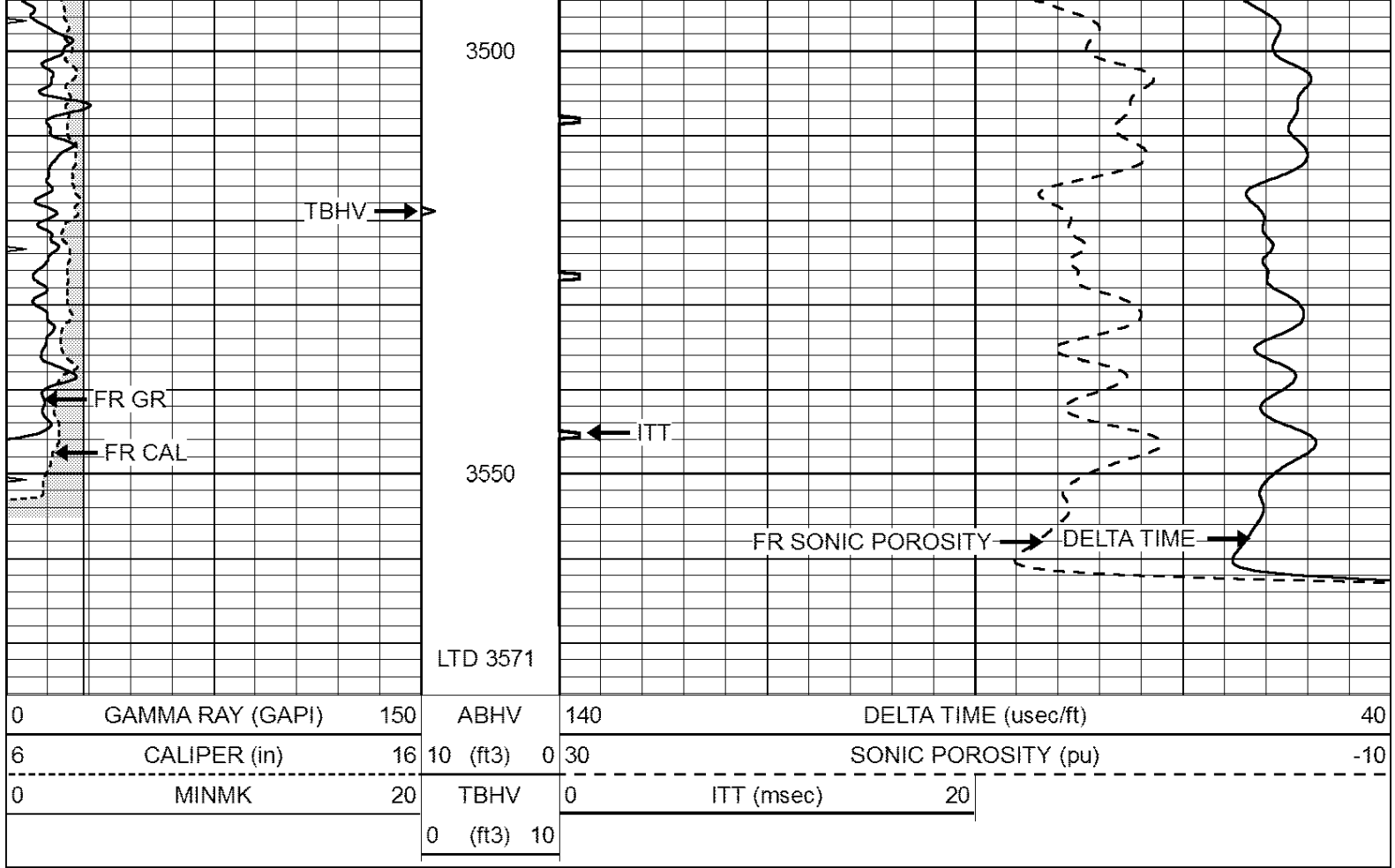
3150

3200

3250



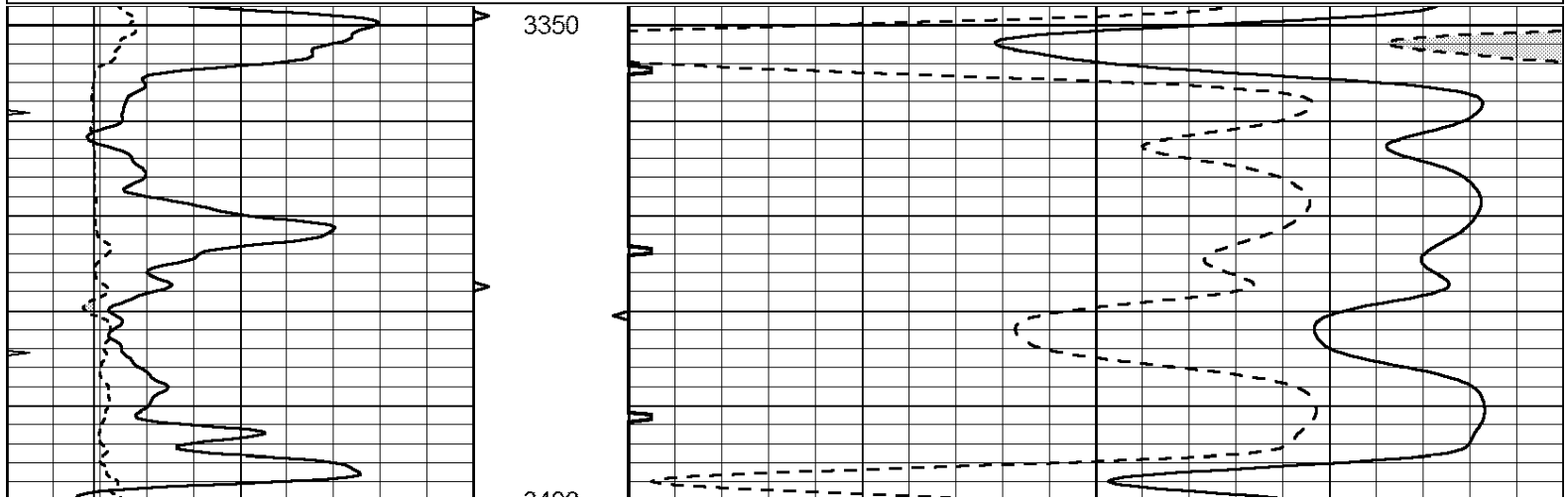


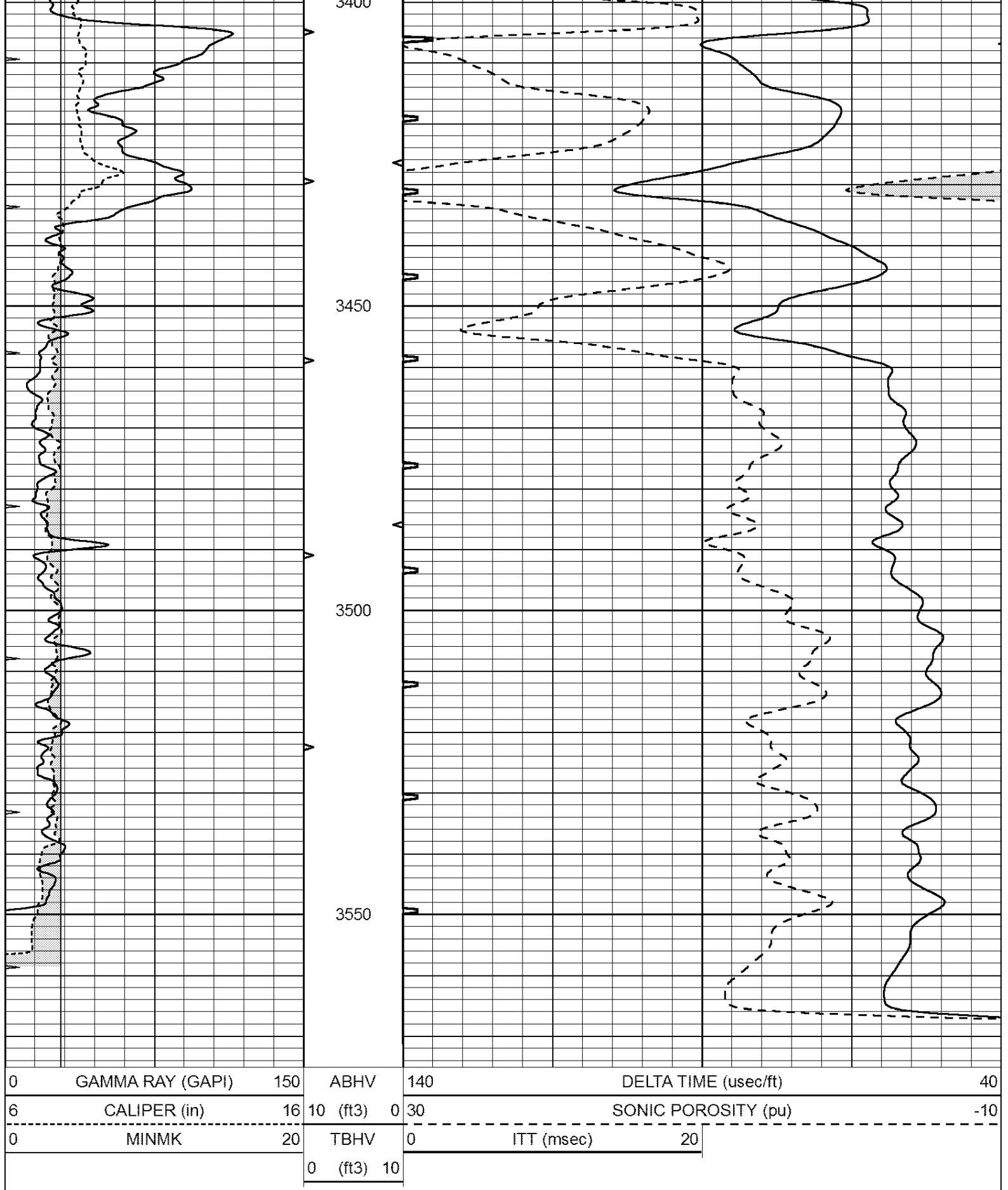


REPEAT SECTION

Database File: 30504ddn.db
 Dataset Pathname: pass6.6
 Presentation Format: slt
 Dataset Creation: Sun May 10 22:27:42 2015 by Calc Open-Cased 090629
 Charted by: Depth in Feet scaled 1:240

0	GAMMA RAY (GAPI)	150	ABHV	140	DELTA TIME (usec/ft)	40
6	CALIPER (in)	16	10 (ft3)	0 30	SONIC POROSITY (pu)	-10
0	MINMK	20	TBHV	0	ITT (msec)	20
			0 (ft3)	10		





0	GAMMA RAY (GAPI)	150	ABHV	140	DELTA TIME (usec/ft)	40	
6	CALIPER (in)	16	10 (ft3)	0	30	SONIC POROSITY (pu)	-10
0	MINMK	20	TBHV	0	ITT (msec)	20	
			0 (ft3)	10			