

**COMPLETION  
& PRODUCTION  
SERVICES CO.**

**COMPENSATED  
DENSITY / NEUTRON  
LOG**

Company SHELBY RESOURCES, LLC.  
Well JERRY'S UNIT #1-15  
Field WILDCAT  
County BARTON  
State KANSAS

Company SHELBY RESOURCES, LLC.  
Well JERRY'S UNIT #1-15  
Field WILDCAT  
County BARTON  
State KANSAS

Location: API # : 15-009-26100-0000  
SEC 15 TWP 18S RGE 14W  
Permanent Datum GROUND LEVEL Elevation 1926  
Log Measured From KELLY BSUHING 13' A.G.L.  
Drilling Measured From KELLY BUSHING  
Other Services  
DIL/MEL  
SONIC  
Elevation  
K.B. 1939  
D.F. 1937  
G.L. 1926

Date	5/10/15		
Run Number	ONE		
Depth Driller	3570		
Depth Logger	3571		
Bottom Logged Interval	3547		
Top Log Interval	2800		
Casing Driller	8 5/8"@947'		
Casing Logger	944		
Bit Size	7 7/8"		
Type Fluid in Hole	CHEMICAL MUD	CHLORIDES 3,000 PPM	
Density / Viscosity	8.8/58		
pH / Fluid Loss	10.0/8.0		
Source of Sample	FLOWLINE		
Rm @ Meas. Temp	.800@75F		
Rmt @ Meas. Temp	.600@75F		
Rmc @ Meas. Temp	.960@75F		
Source of Rmf / Rmc	MEASUREMENT		
Rm @ BHT	.536@112F		
Time Circulation Stopped	2 HOURS		
Time Logger on Bottom	7:30 P.M.		
Maximum Recorded Temperature	112F		
Equipment Number	4010		
Location	HAYS, KANSAS		
Recorded By	JEFF LUEBBERS		
Witnessed By	JEREMY SCHWARTZ		

<<< Fold Here >>>

All interpretations are opinions based on inferences from electrical or other measurements and we cannot and do not guarantee the accuracy or correctness of any interpretation, and we shall not, except in the case of gross or willful negligence on our part, be liable or responsible for any loss, costs, damages, or expenses incurred or sustained by anyone resulting from any interpretation made by any of our officers, agents or employees. These interpretations are also subject to our general terms and conditions set out in our current Price Schedule.

Comments

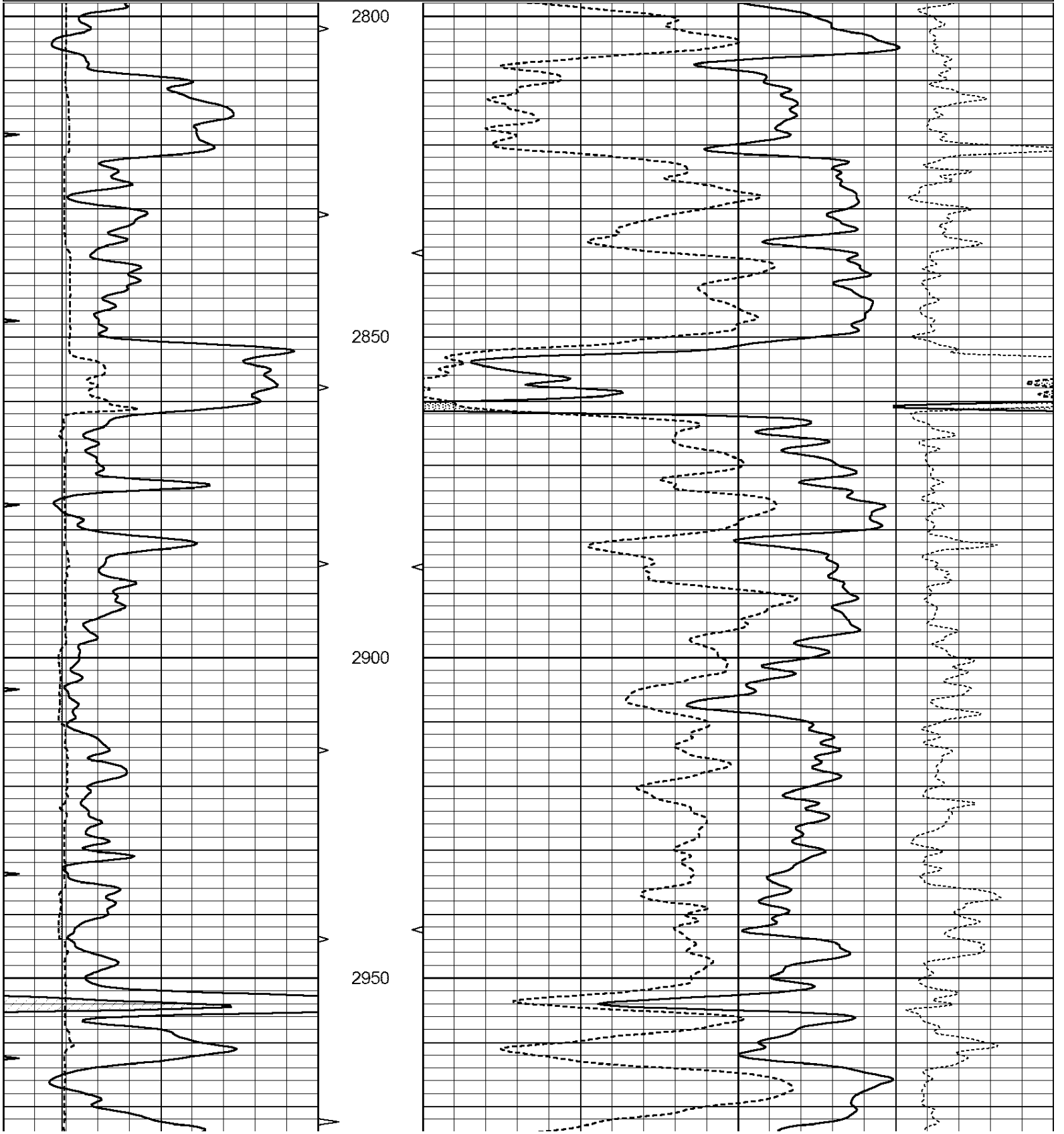
THANK YOU FOR USING "NABORS" HAYS, KANSAS (785) 628-6395  
HOISINGTON, KS. W. TO TO "HWY 4 & 281) 3S. ON "BOYD RD." TO "NW 90TH", 1/2W., S. INTO

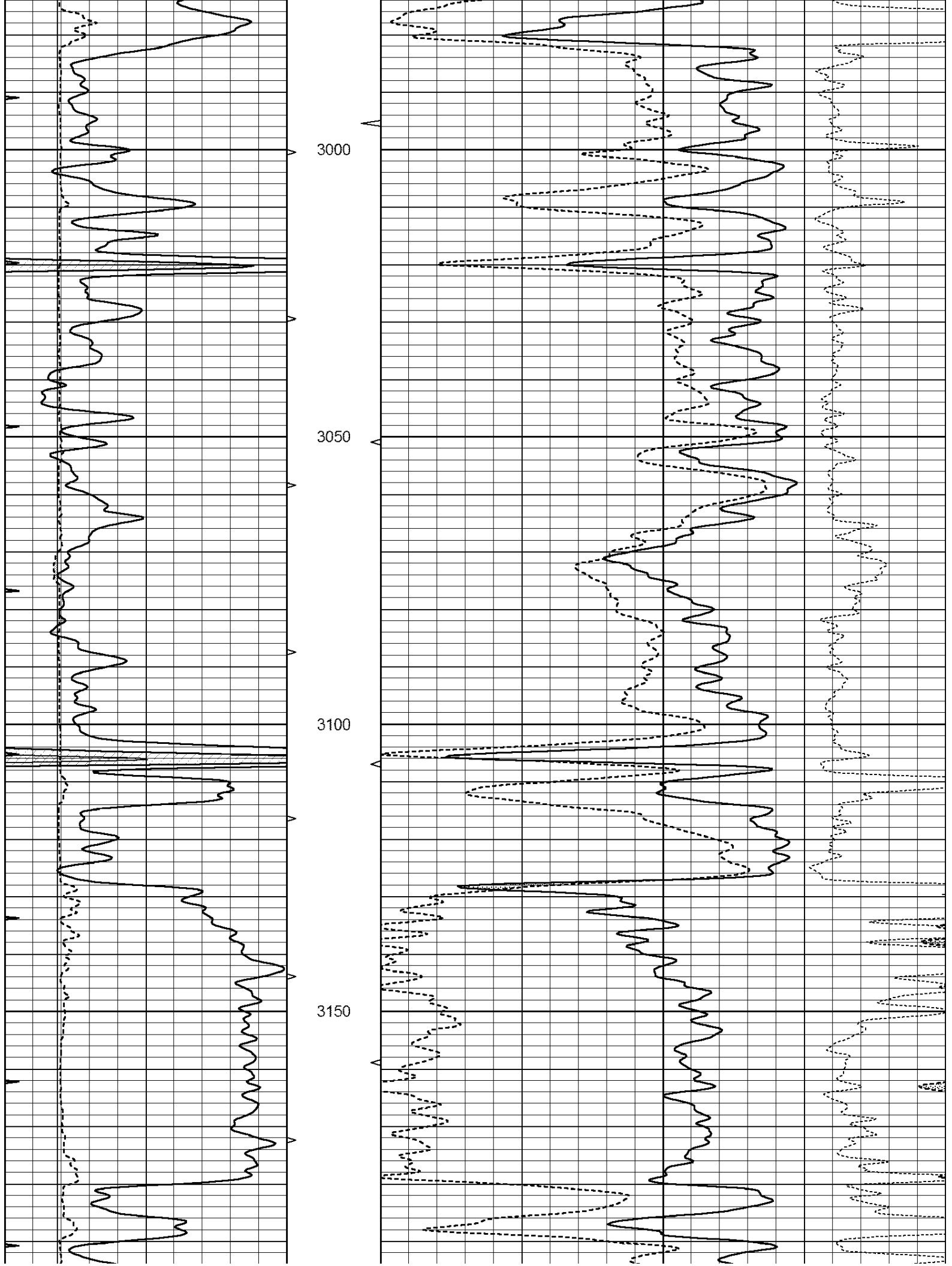


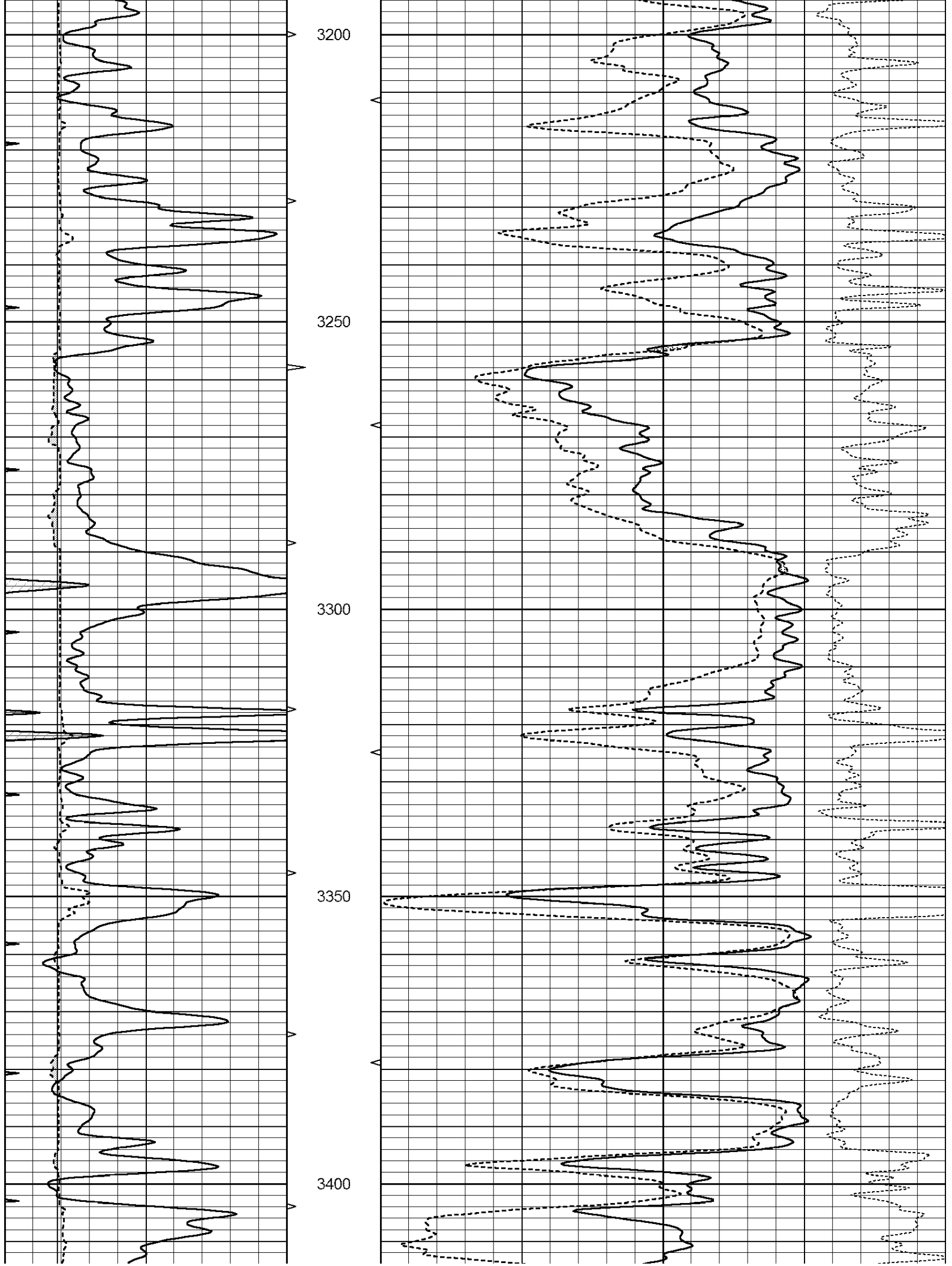
**MAIN SECTION**

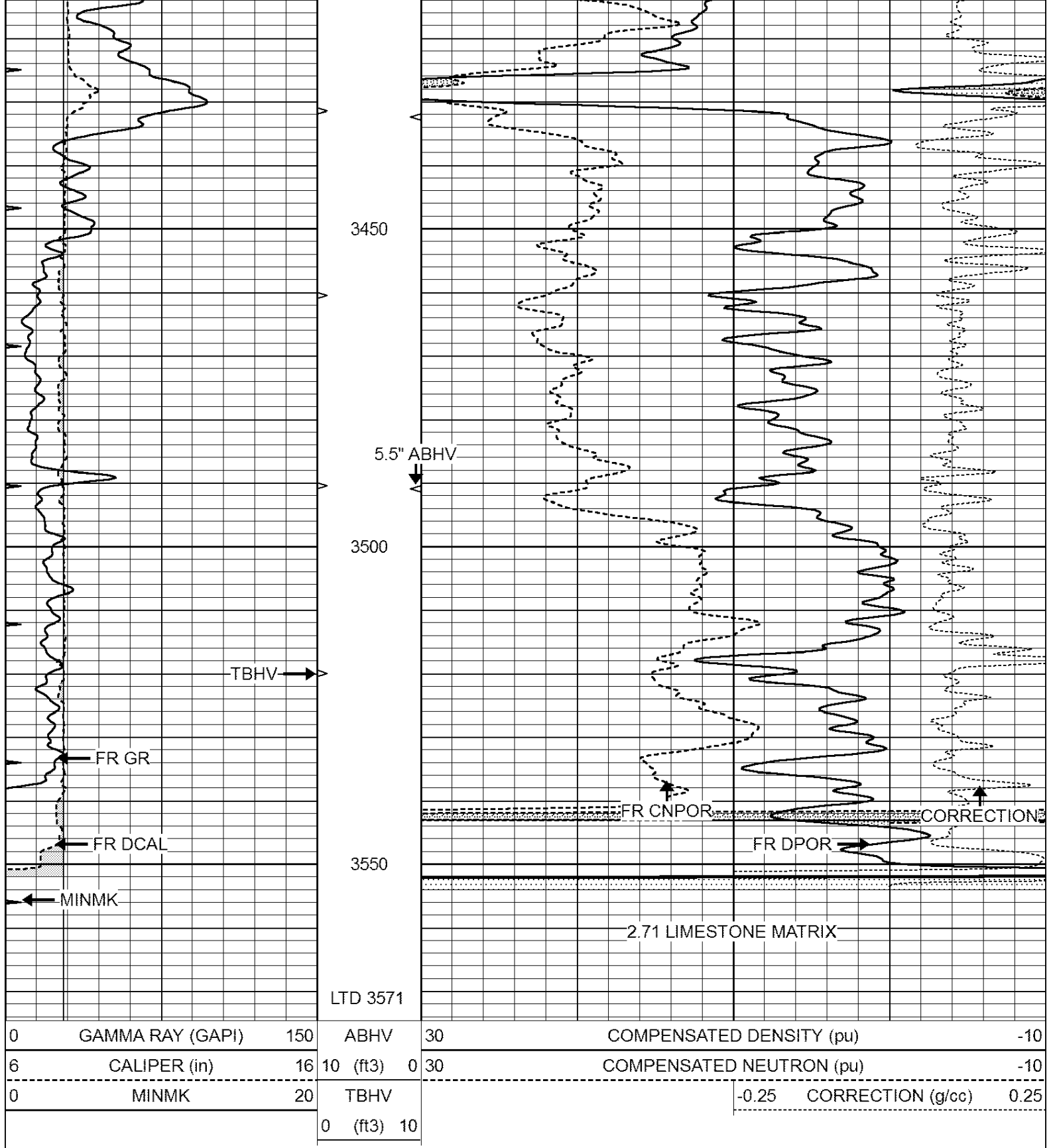
Database File: 30504ddn.db  
 Dataset Pathname: pass3.5  
 Presentation Format: den\_neu  
 Dataset Creation: Sun May 10 21:23:06 2015 by Calc Open-Cased 090629  
 Charted by: Depth in Feet scaled 1:240

0	GAMMA RAY (GAPI)	150	ABHV	30	COMPENSATED DENSITY (pu)	-10
6	CALIPER (in)	16	10 (ft3)	0 30	COMPENSATED NEUTRON (pu)	-10
0	MINMK	20	TBHV		-0.25 CORRECTION (g/cc)	0.25
			0 (ft3)	10		









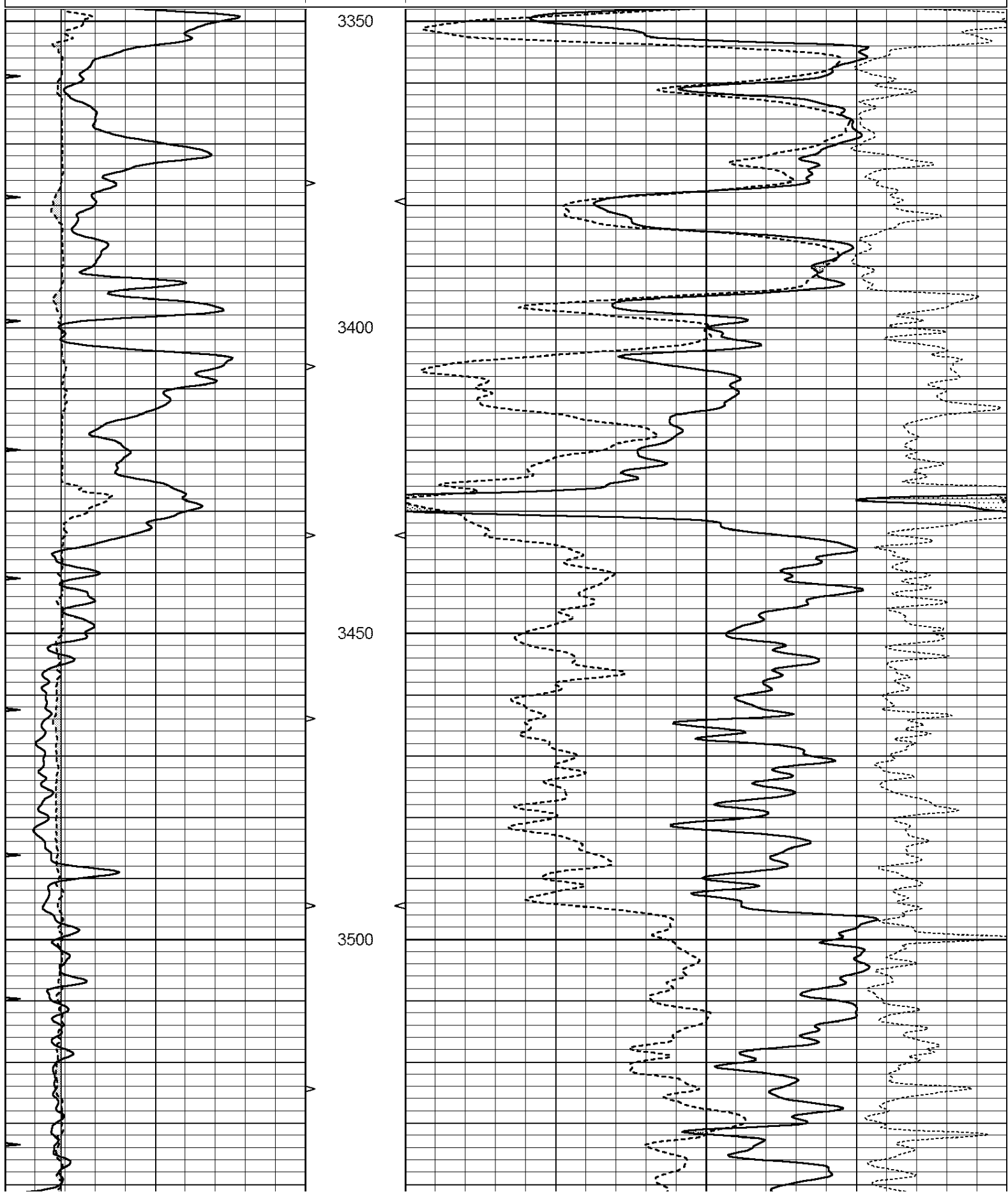
# REPEAT SECTION

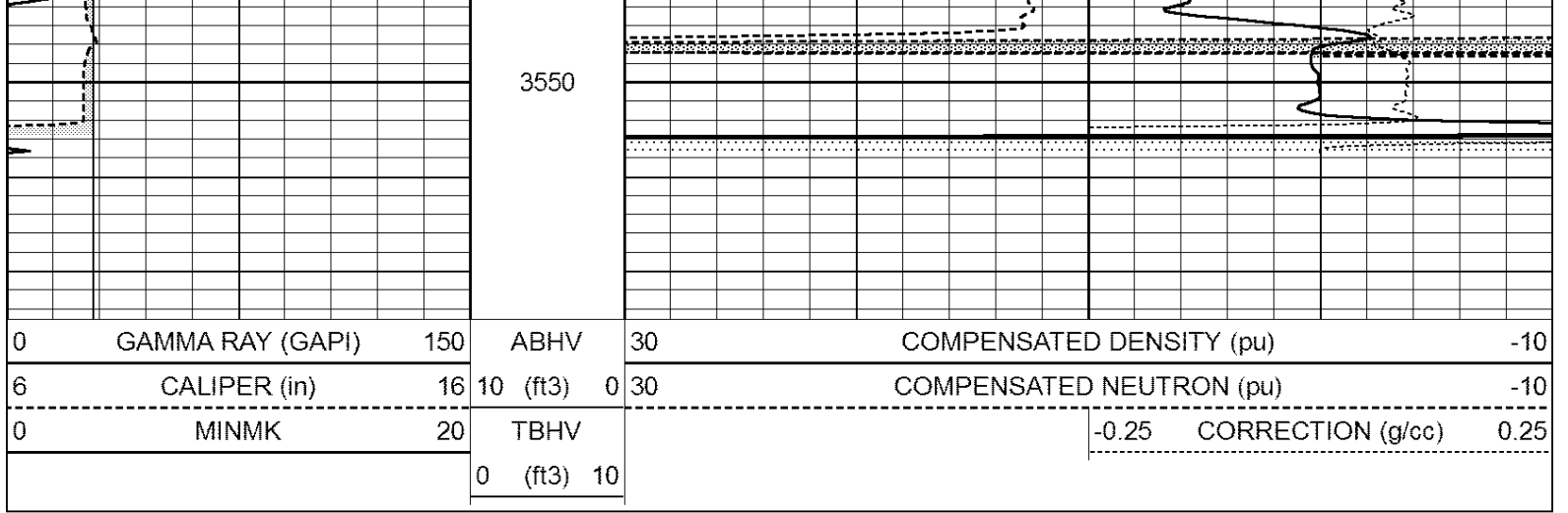
Database File: 30504ddn.db  
 Dataset Pathname: pass2.9  
 Presentation Format: den\_neu  
 Dataset Creation: Sun May 10 19:59:18 2015 by Calc Open-Cased 090629

Charted by:

Depth in Feet scaled 1:240

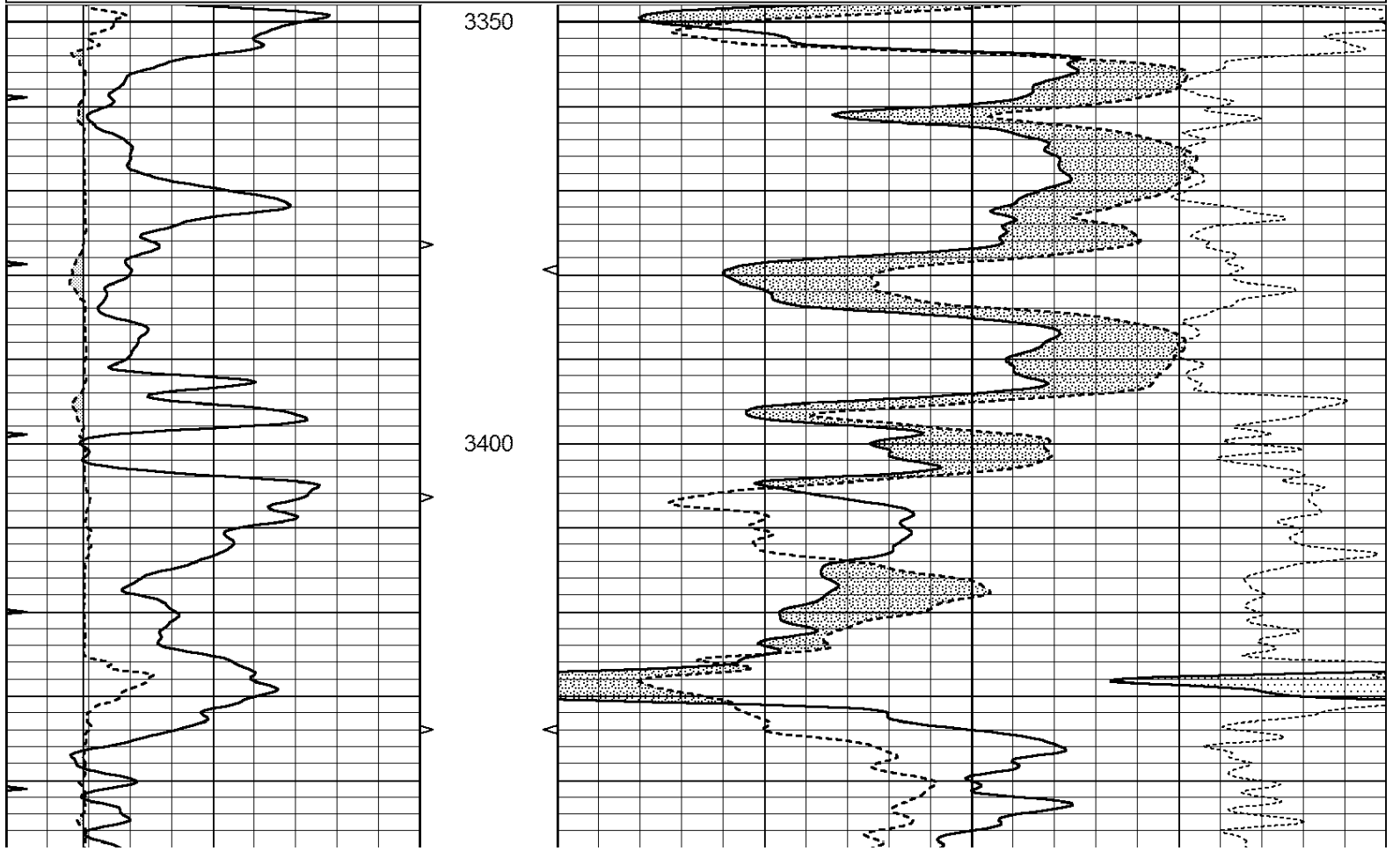
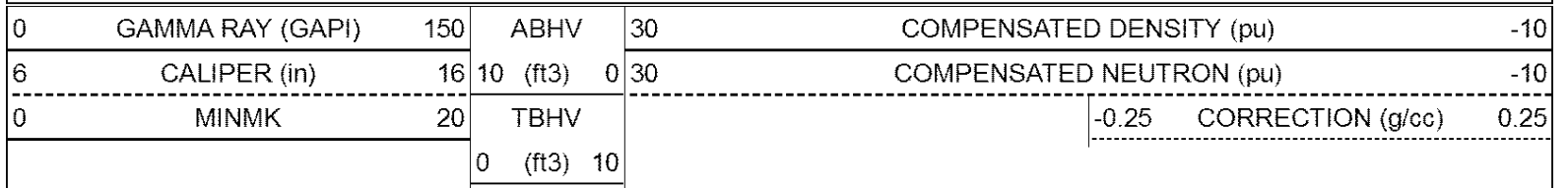
0	GAMMA RAY (GAPI)	150	ABHV	30	COMPENSATED DENSITY (pu)	-10		
6	CALIPER (in)	16	10 (ft3)	0	30	COMPENSATED NEUTRON (pu)	-10	
0	MINMK	20	TBHV			-0.25	CORRECTION (g/cc)	0.25
			0 (ft3)	10				

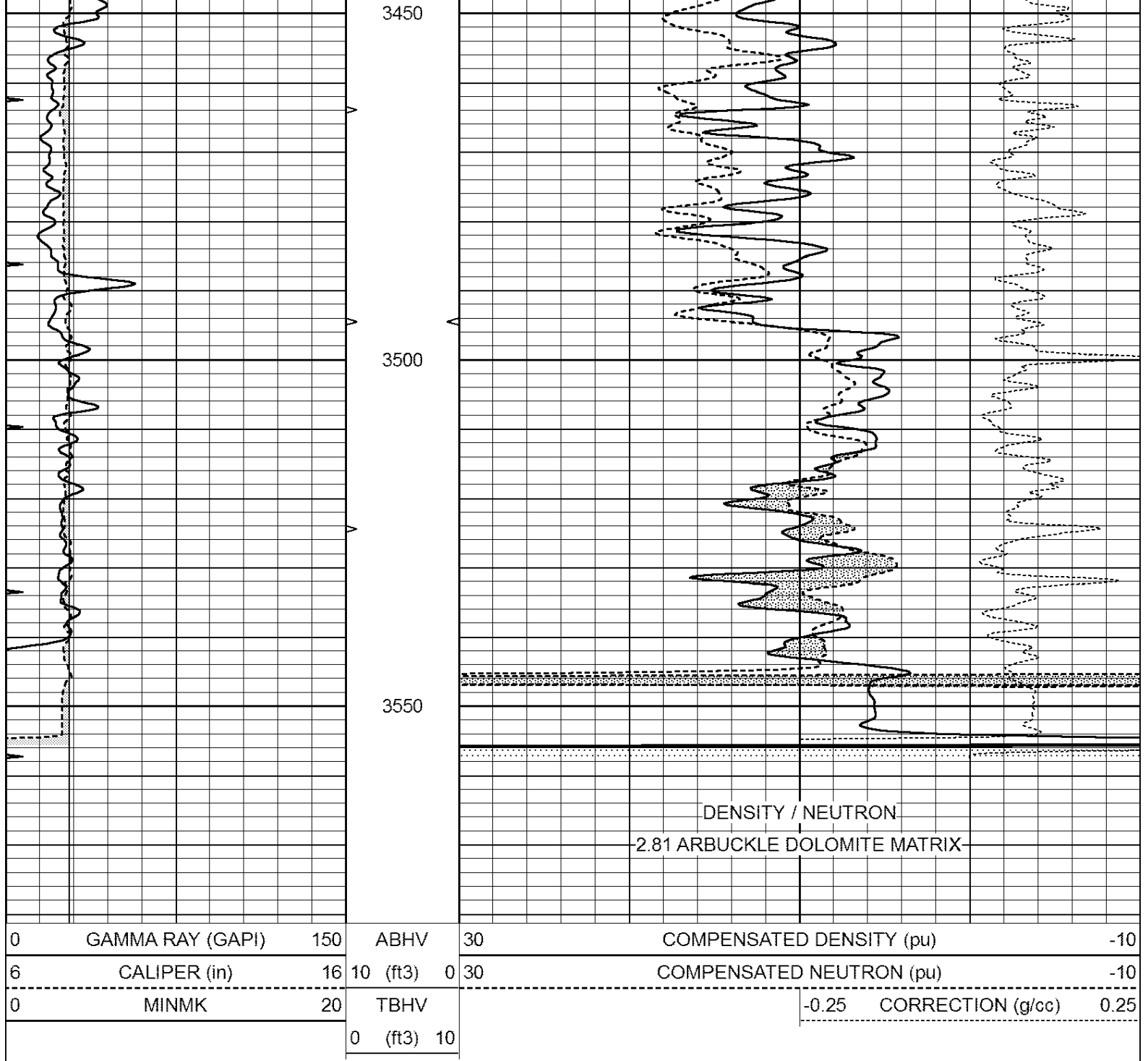




# DOLOMITE REPEAT

Database File: 30504ddn.db  
 Dataset Pathname: pass2.10D  
 Presentation Format: den\_neu  
 Dataset Creation: Sun May 10 20:12:12 2015  
 Charted by: Depth in Feet scaled 1:240





### Calibration Report

Database File: 30504ddn.db  
 Dataset Pathname: pass3.5  
 Dataset Creation: Sun May 10 21:23:06 2015 by Calc Open-Cased 090629

### Dual Induction Calibration Report

Serial-Model: PROBE8-DILG  
 Surface Cal Performed: Sun May 10 19:54:09 2015  
 Downhole Cal Performed: Mon Jul 28 11:08:27 2008  
 After Survey Verification Performed: Mon Jul 28 11:08:27 2008

#### Surface Calibration

Loop:	Readings		V	References		mmho/m	Results	
	Air	Loop		Air	Loop		m	b
Deep	0.015	0.648	V	0.000	400.000	mmho/m	620.000	3.000
Medium	0.029	0.796	V	0.000	464.000	mmho/m	590.000	-13.000

Internal:	Zero	Cal		Zero	Cal		m	b
Deep	0.017	0.657	V	0.000	400.000	mmho/m	625.153	-10.619
Medium	0.016	0.757	V	0.000	464.000	mmho/m	625.992	-9.739

Downhole Calibration								
	Readings			References			Results	
	Zero	Cal		Zero	Cal		m'	b'
Deep	0.000	0.000	mmho/m	2.011	405.777	mmho/m	1.000	0.000
Medium	0.000	0.000	mmho/m	7.590	503.393	mmho/m	1.000	0.000
LL3		7.500	V		1500.000	Ohm-m		
		0.000	V		20.000	Ohm-m		
		-7.200	V		3800.000	mmho-m		

After Survey Verification								
	Readings			Targets			Results	
	Zero	Cal		Zero	Cal		m'	b'
Deep	0.000	0.000	mmho/m	0.000	0.000	mmho/m	0.000	0.000
Medium	0.000	0.000	mmho/m	0.000	0.000	mmho/m	0.000	0.000
LL3		1.000	Ohm-m		1.000	Ohm-m		
		0.000	Ohm-m		0.000	Ohm-m		
		1.000	mmho-m		1.000	mmho-m		

**Compensated Density Calibration Report**

Serial-Model:	GEAR3-GEARHART
Source / Verifier:	143 / 143
Master Calibration Performed:	Sun May 10 19:53:41 2015
Before Survey Verification Performed:	
After Survey Verification Performed:	

Master Calibration							
	Density			Far Detector	Near Detector		
Magnesium	1.710	g/cc		881.29	468.35	cps	
Aluminum	2.580	g/cc		210.51	354.56	cps	
	Spine Angle = 79.00			Density/Spine Ratio = 0.596			
	Size			Reading			
Small Ring	8.00	in		4.29	V		
Large Ring	14.00	in		6.24	V		

Before Survey Verification							
	Target			Measured			
		g/cc			g/cc		
		g/cc			g/cc		
		g/cc			g/cc		

After Survey Verification							
	Target			Measured			
		g/cc			g/cc		
		g/cc			g/cc		
		g/cc			g/cc		

**Compensated Neutron Calibration Report**

Serial Number:	61
----------------	----

## CALIBRATION

Detector	Readings	Target	Normalization
Short Space	1.00 cps	1.00 cps	1.0000
Long Space	1.00 cps	1.00 cps	1.0000

## PRE-SURVEY VERIFICATION

	Detector	Readings	Measured	Target
1)	Short Space	cps		
	Long Space	cps	pu	pu
2)	Short Space	cps		
	Long Space	cps	pu	
3)	Short Space	cps		
	Long Space	cps	pu	

## POST-SURVEY VERIFICATION

	Detector	Readings	Measured	Target
1)	Short Space	cps		
	Long Space	cps	pu	pu
2)	Short Space	cps		
	Long Space	cps	pu	pu
3)	Short Space	cps		
	Long Space	cps	pu	pu

## Gamma Ray Calibration Report

Serial Number:	GR6	
Tool Model:	OPEN	
Performed:	Sun May 10 18:59:16 2015	
Calibrator Value:	150.0	GAPI
Background Reading:	0.0	cps
Calibrator Reading:	276.0	cps
Sensitivity:	0.8000	GAPI/cps