



**COMPLETION
& PRODUCTION
SERVICES CO.**

**DUAL INDUCTION
LOG**

Company SHELBY RESOURCES, LLC.
Well JERRY'S UNIT #1-15
Field WILDCAT
County BARTON
State KANSAS

Company SHELBY RESOURCES, LLC.
Well JERRY'S UNIT #1-15
Field WILDCAT
County BARTON State KANSAS

Location: API # : 15-009-26100-0000
SEC 15 TWP 18S RGE 14W
Permanent Datum GROUND LEVEL Elevation 1926
Log Measured From KELLY BSUHING 13' A.G.L.
Drilling Measured From KELLY BUSHING
Other Services
CDL/CNL
MEL/SON
Elevation
K.B. 1939
D.F. 1937
G.L. 1926

Date	5/10/15	
Run Number	ONE	
Depth Driller	3570	
Depth Logger	3571	
Bottom Logged Interval	3569	
Top Log Interval	00	
Casing Driller	8 5/8"@947'	
Casing Logger	944	
Bit Size	7 7/8"	
Type Fluid in Hole	CHEMICAL MUD	CHLORIDES 3,000 PPM
Density / Viscosity	8.8/58	
pH / Fluid Loss	10.0/8.0	
Source of Sample	FLOWLINE	
Rm @ Meas. Temp	.800@75F	
Rmt @ Meas. Temp	.600@75F	
Rmc @ Meas. Temp	.960@75F	
Source of Rmf / Rmc	MEASUREMENT	
Rm @ BHT	.536@112F	
Time Circulation Stopped	2 HOURS	
Time Logger on Bottom	7:30 P.M.	
Maximum Recorded Temperature	112F	
Equipment Number	4010	
Location	HAYS, KANSAS	
Recorded By	JEFF LUEBBERS	
Witnessed By	JEREMY SCHWARTZ	

<<< Fold Here >>>

All interpretations are opinions based on inferences from electrical or other measurements and we cannot and do not guarantee the accuracy or correctness of any interpretation, and we shall not, except in the case of gross or willful negligence on our part, be liable or responsible for any loss, costs, damages, or expenses incurred or sustained by anyone resulting from any interpretation made by any of our officers, agents or employees. These interpretations are also subject to our general terms and conditions set out in our current Price Schedule.

Comments

THANK YOU FOR USING "NABORS" HAYS, KANSAS (785) 628-6395
HOISINGTON, KS. W. TO TO "HWY 4 & 281) 3S. ON "BOYD RD." TO "NW 90TH", 1/2W., S. INTO



MAIN SECTION

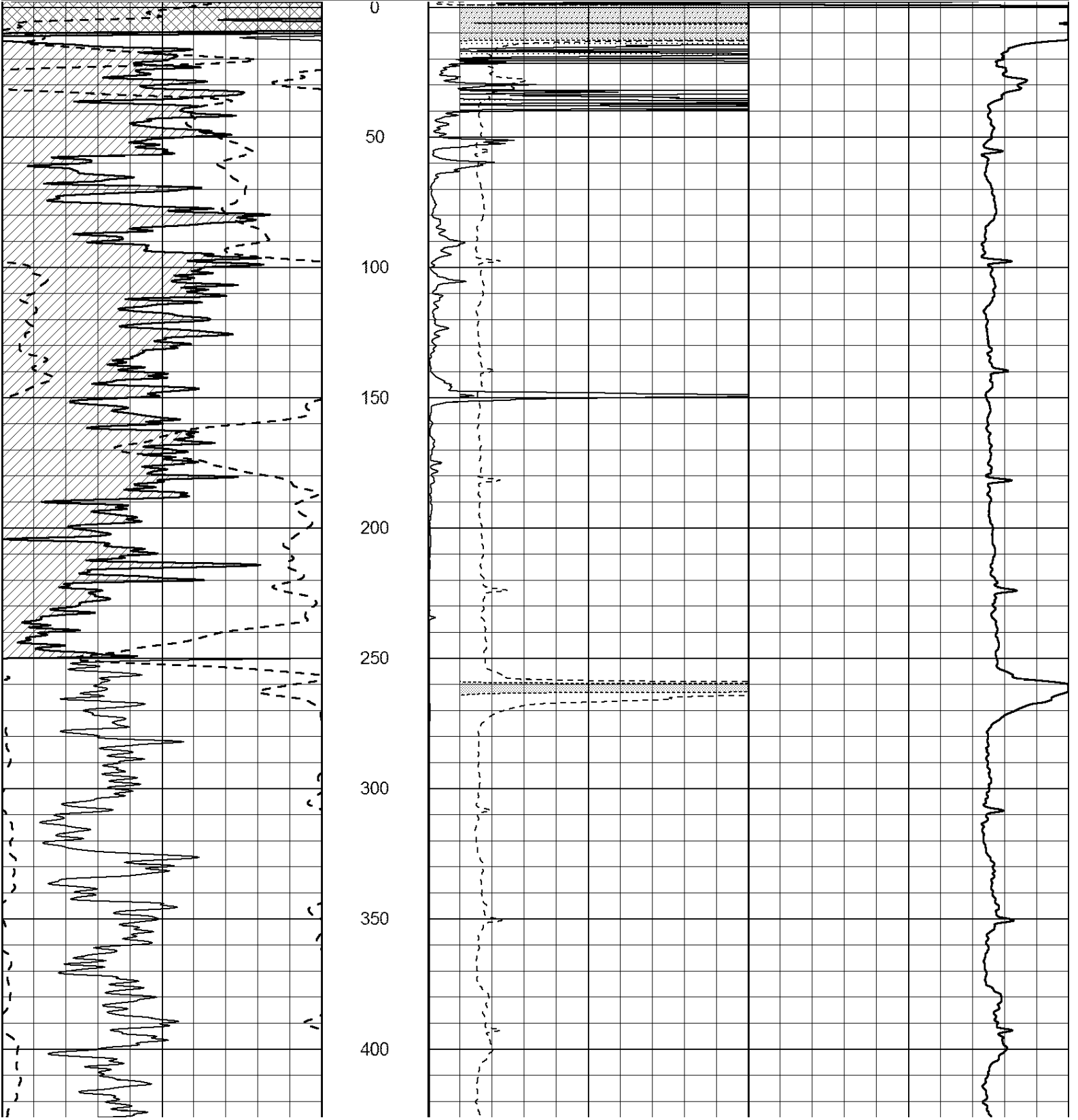
Database File: 30504ddn.db
 Dataset Pathname: pass3.5
 Presentation Format: dil2
 Dataset Creation: Sun May 10 21:23:06 2015 by Calc Open-Cased 090629
 Charted by: Depth in Feet scaled 1:600

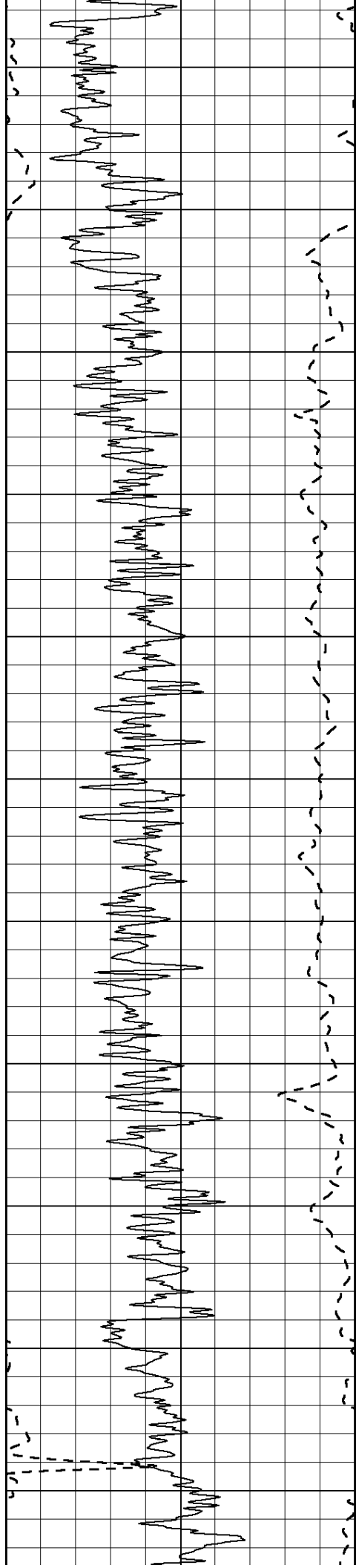
0	Gamma Ray (GAPI)	150
-100	SP (mV)	100

0	RLL3 (Ohm-m)	50
0	RILD (Ohm-m)	50

1000	CILD (mmho/m)	0
------	---------------	---

50	RILD X10 (Ohm-m)	500
50	RLL3 X10 (Ohm-m)	500





450

500

550

600

650

700

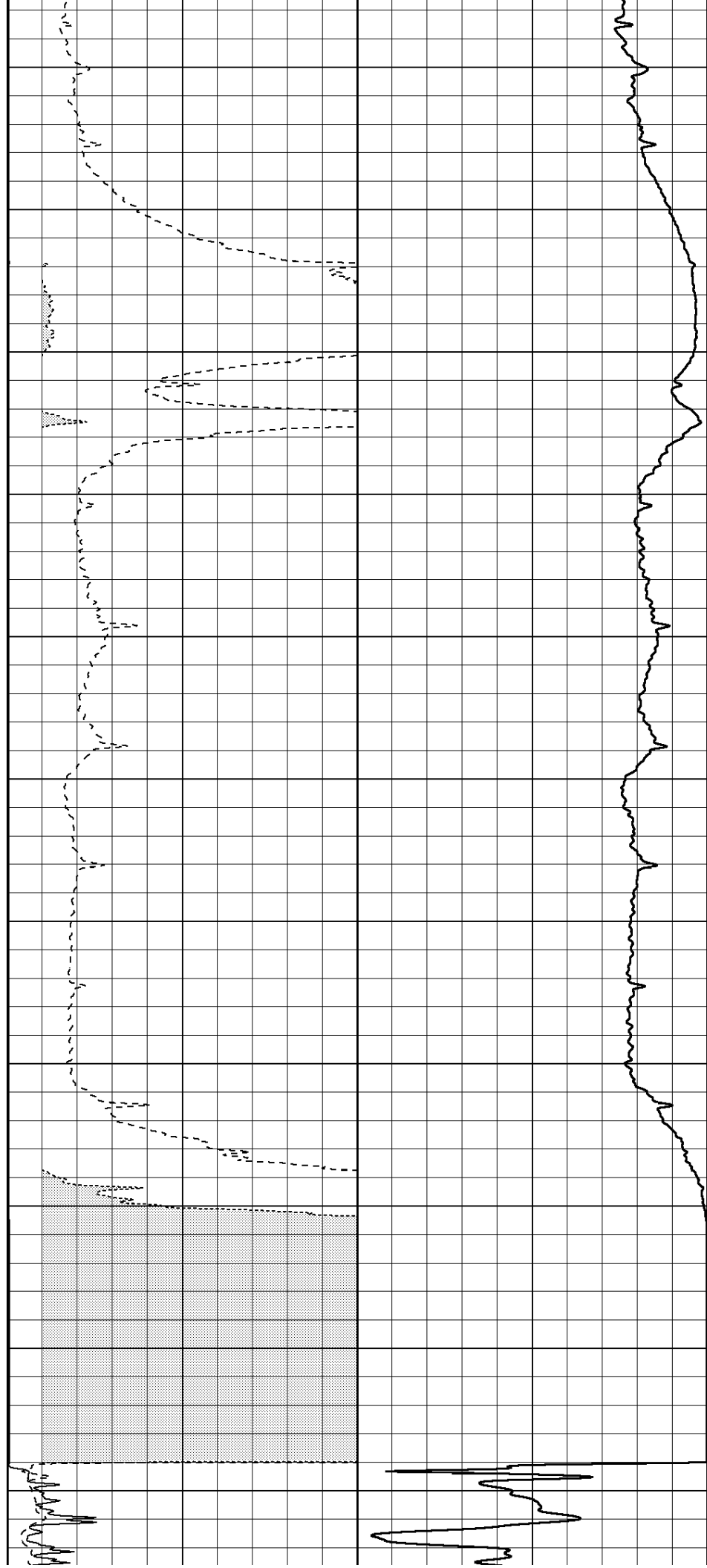
750

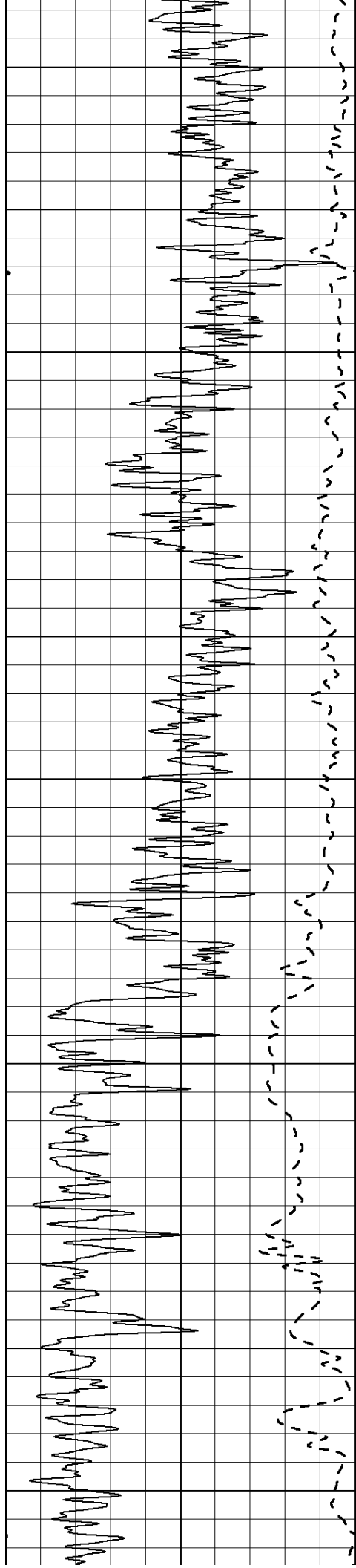
800

850

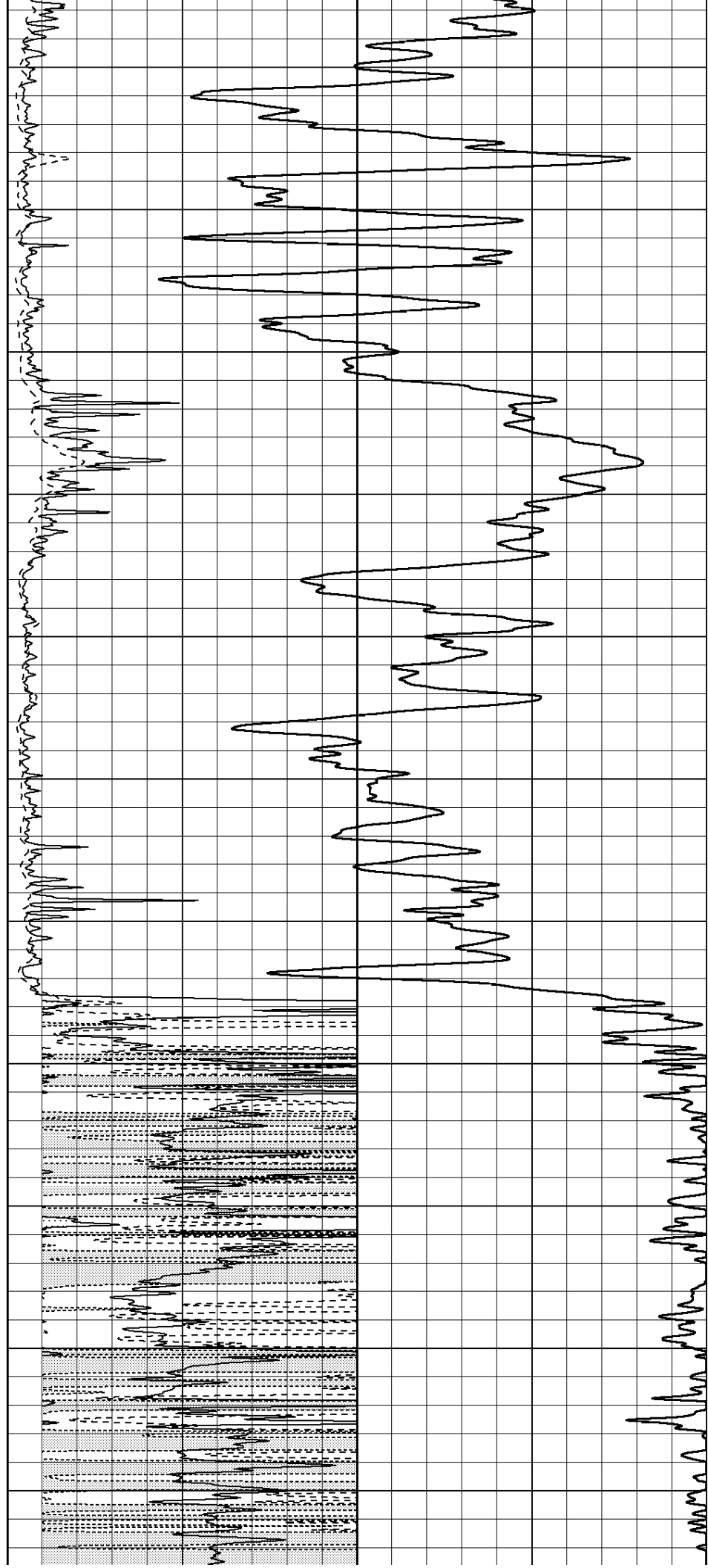
900

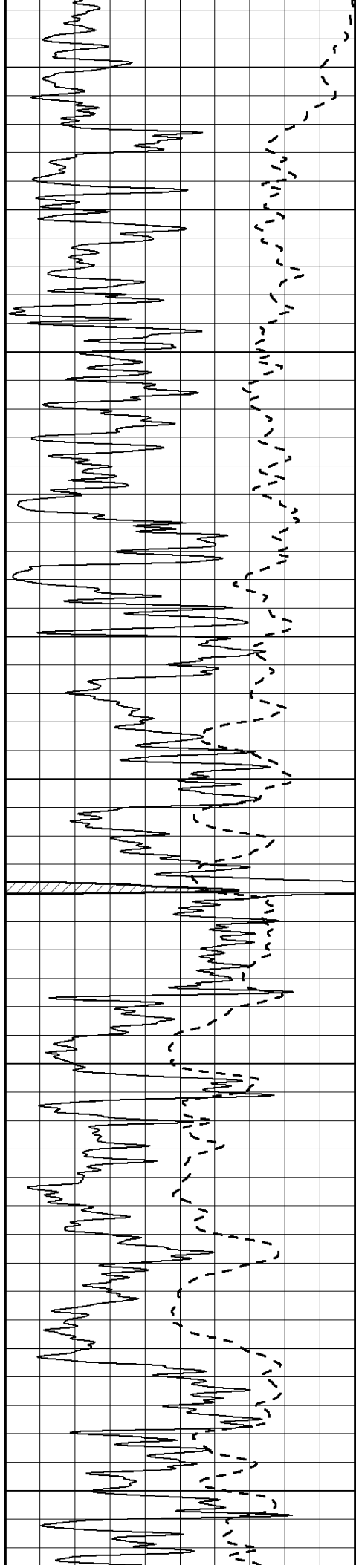
950





1000
1050
1100
1150
1200
1250
1300
1350
1400
1450
1500





1550

1600

1650

1700

1750

1800

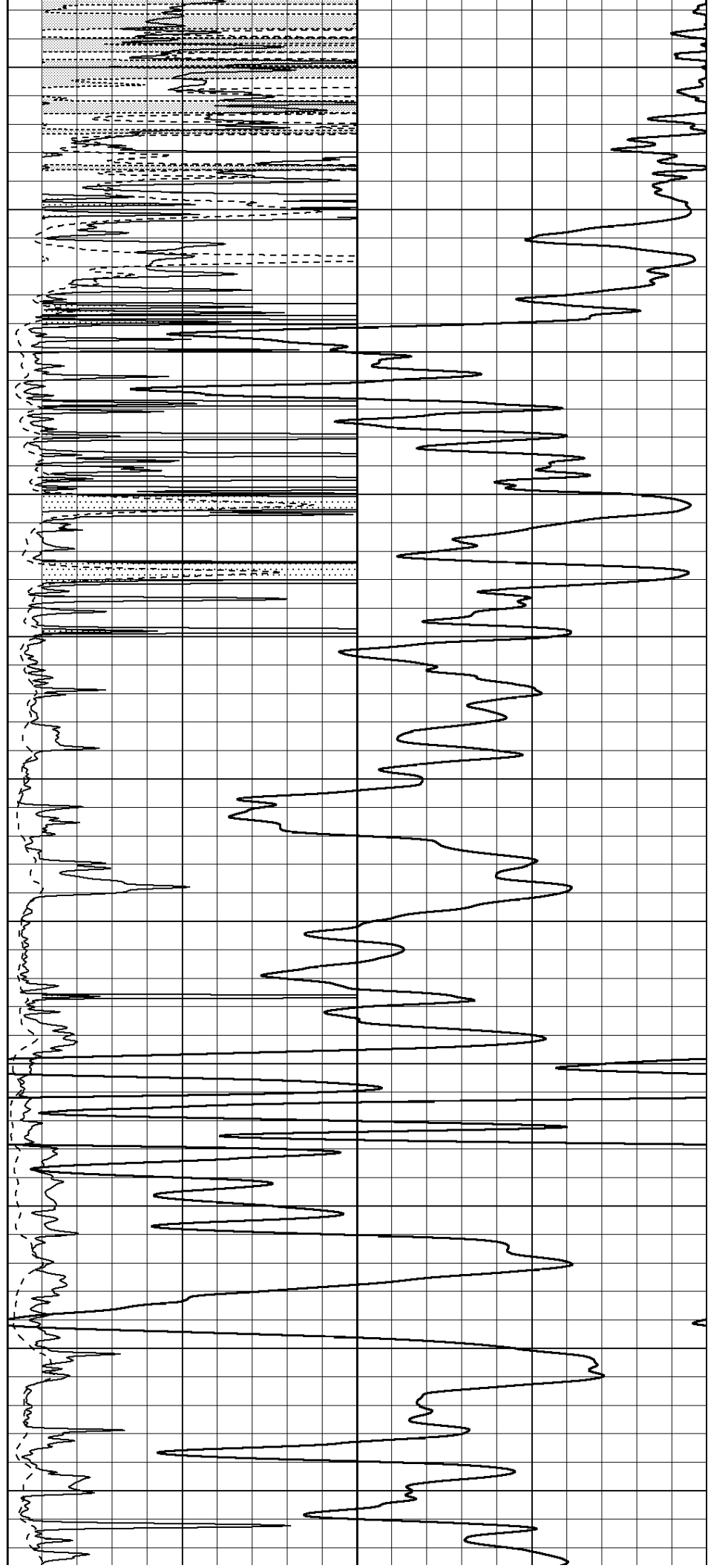
1850

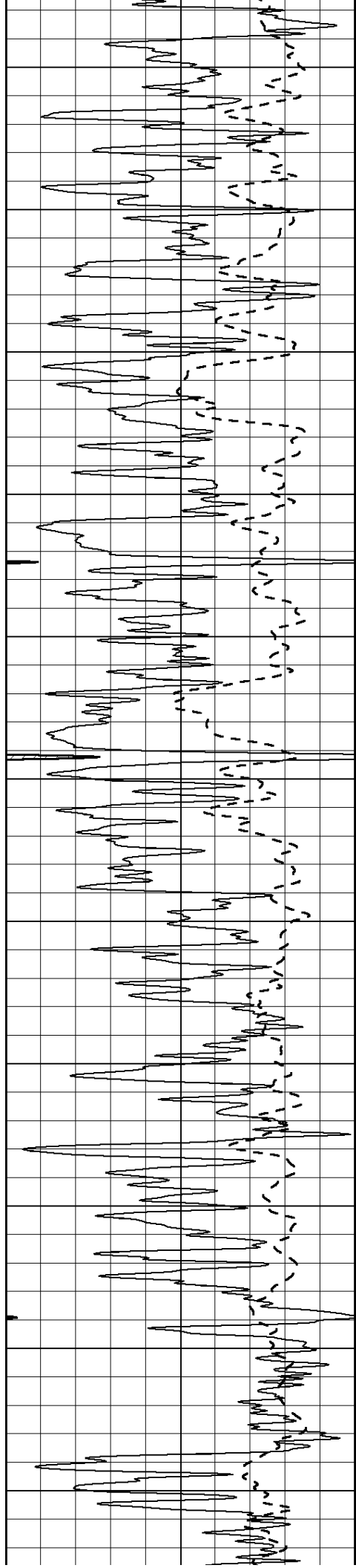
1900

1950

2000

2050





2100

2150

2200

2250

2300

2350

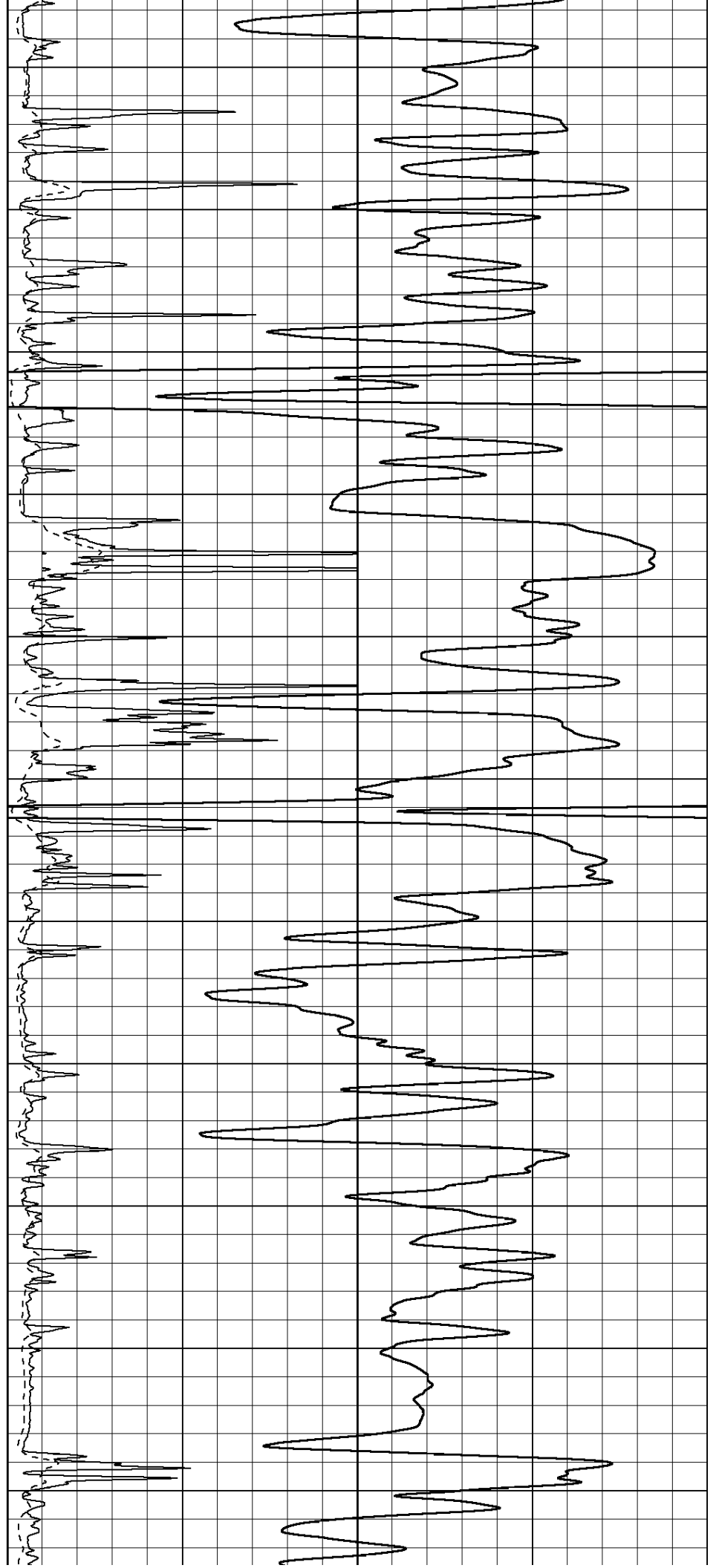
2400

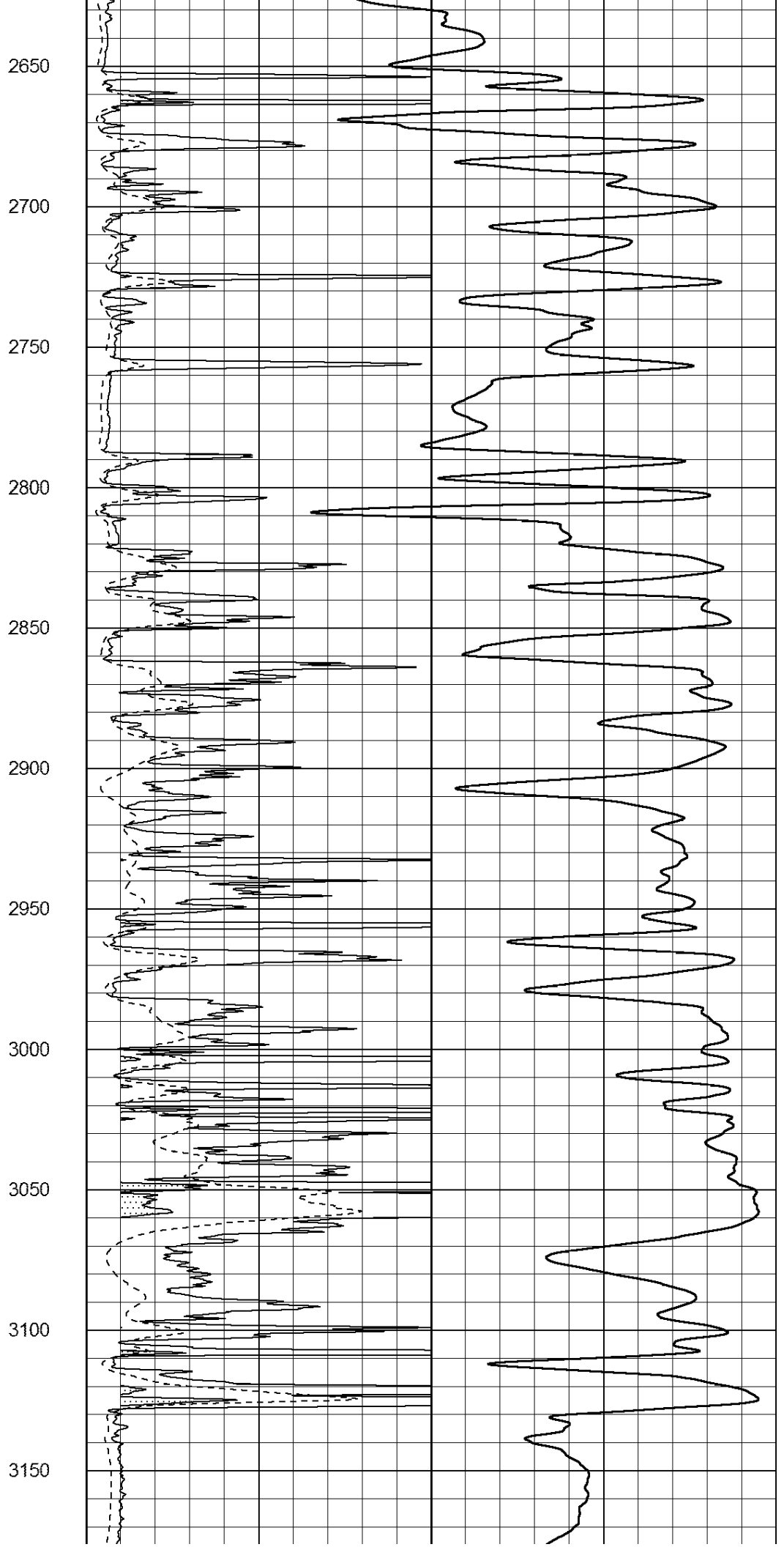
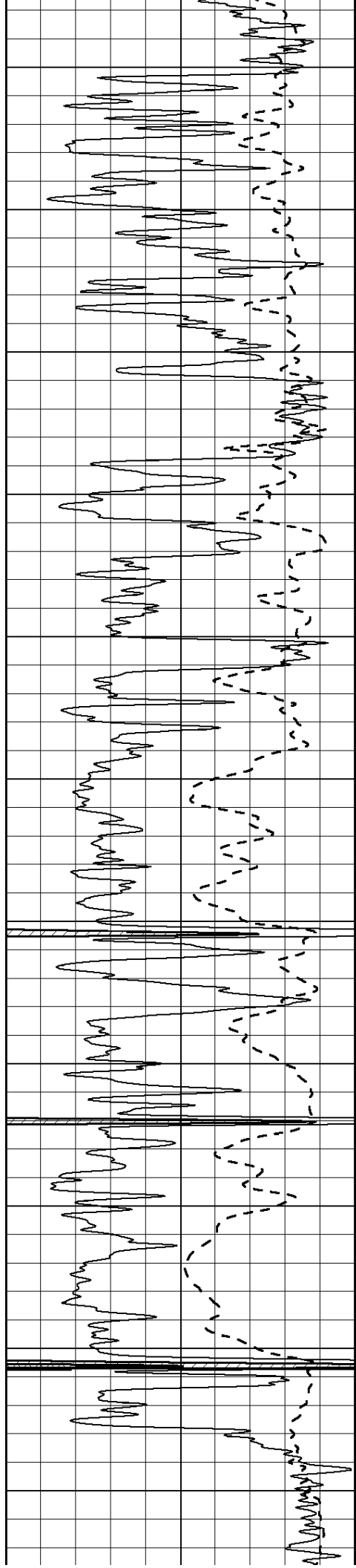
2450

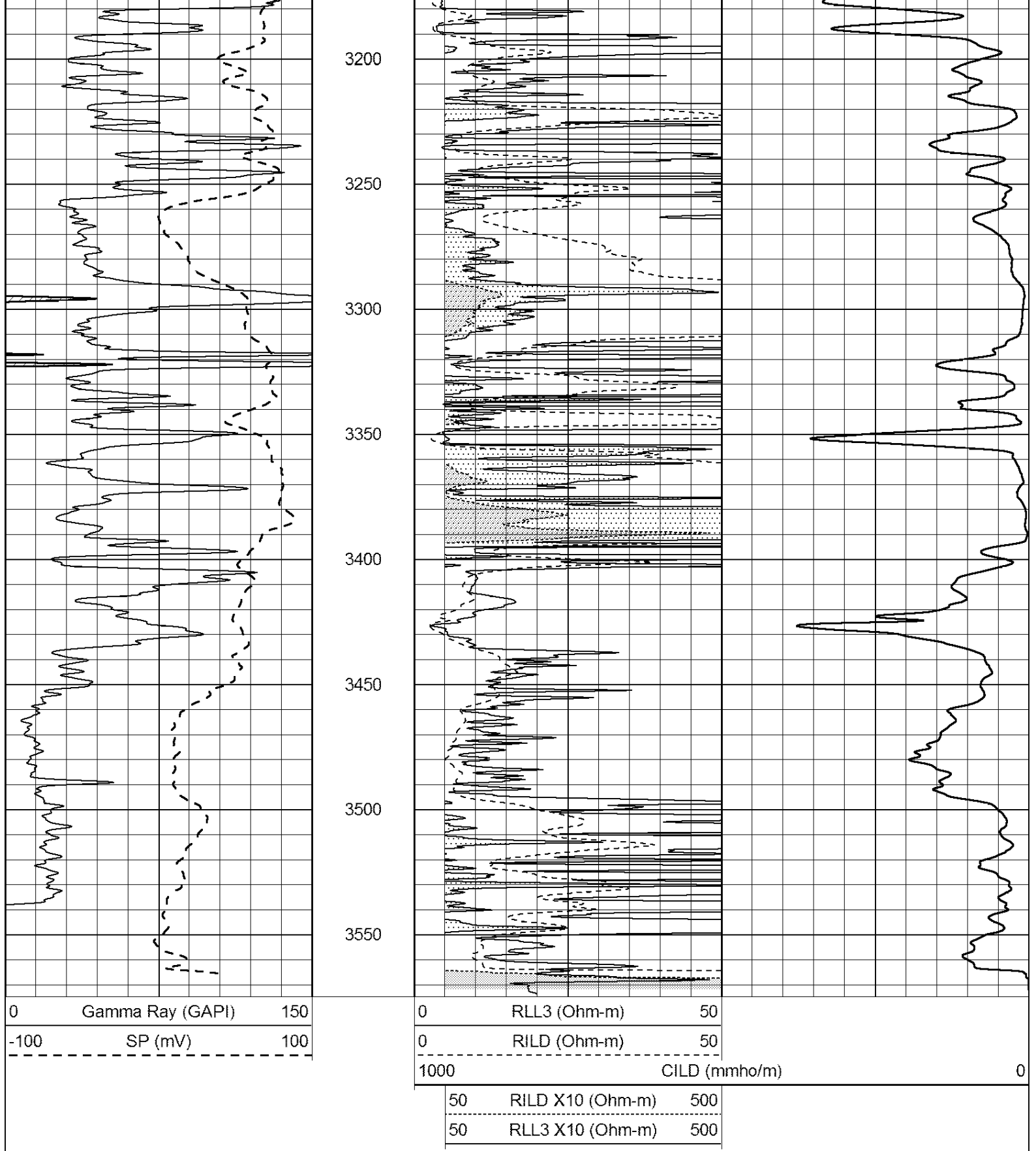
2500

2550

2600





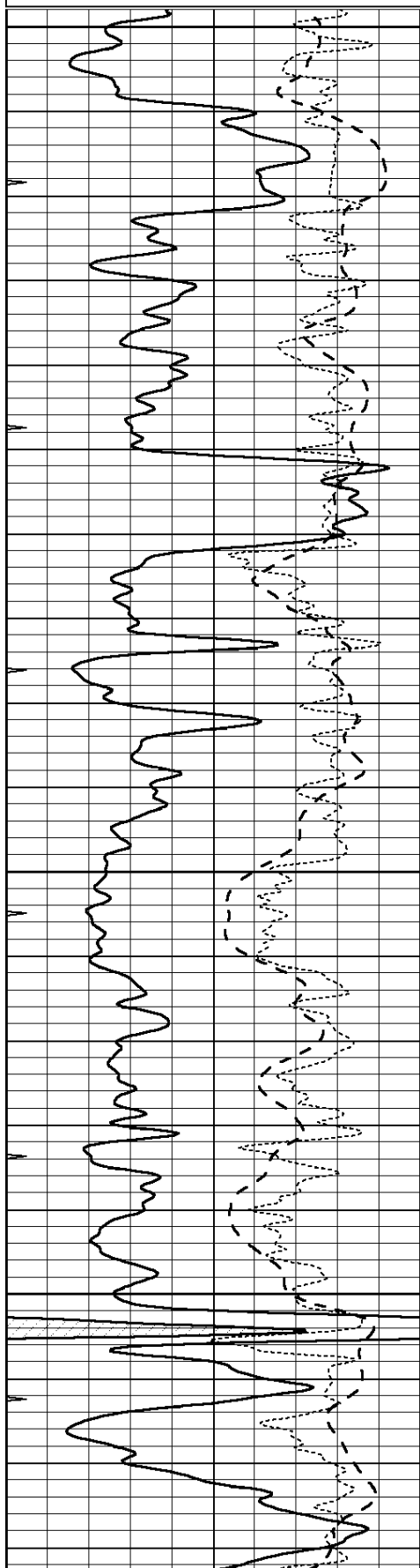


MAIN SECTION

Database File: 30504ddn.db
 Dataset Pathname: pass3.5
 Presentation Format: dil

0	GAMMA RAY (GAPI)	150
-100	SP (mV)	100
-250	Rxo/Rt	50
0	MINMK	20

0.2	SHALLOW GUARD (Ohm-m)	2000
0.2	DEEP INDUCTION (Ohm-m)	2000
0.2	MEDIUM INDUCTION (Ohm-m)	2000

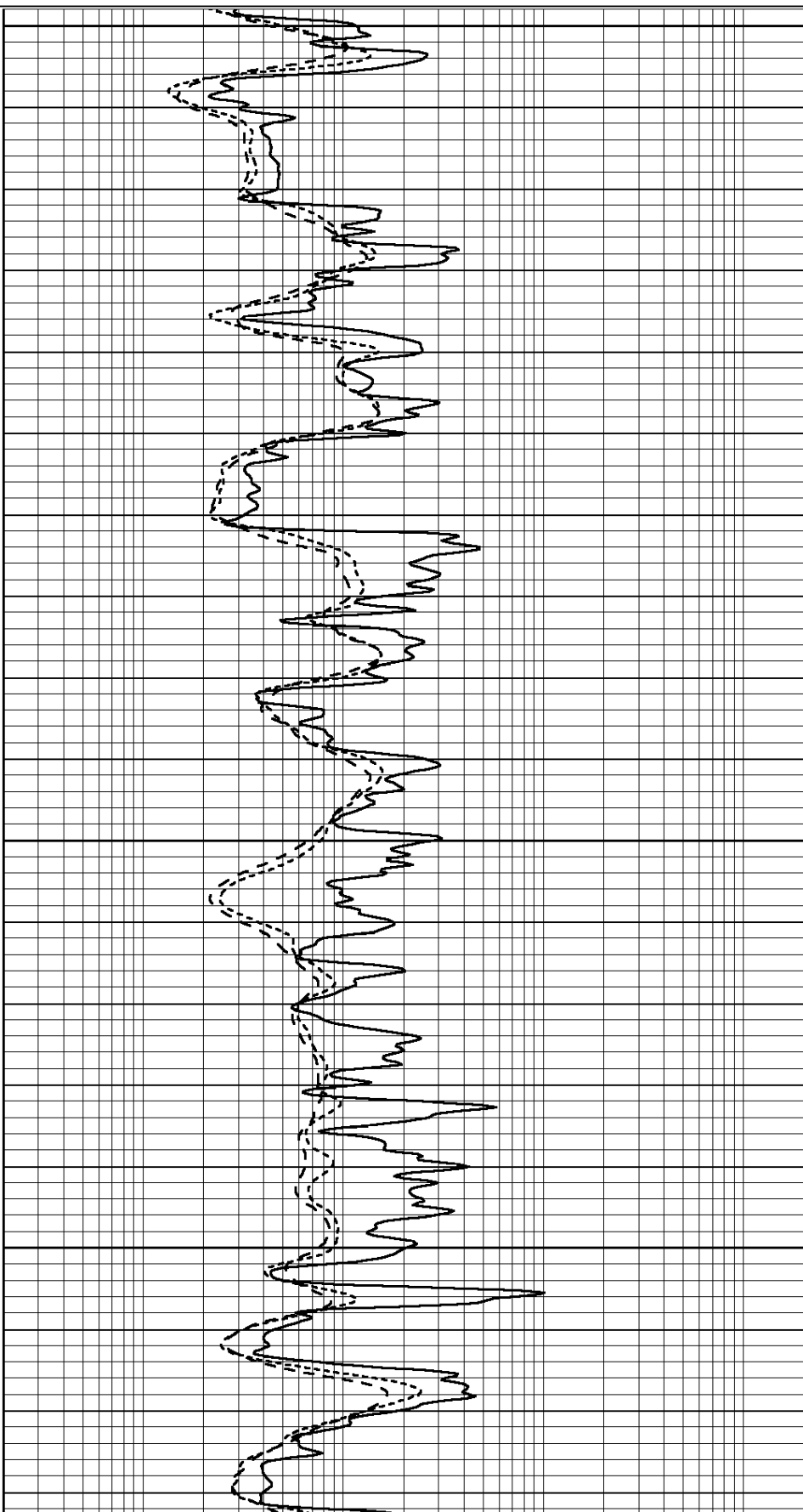


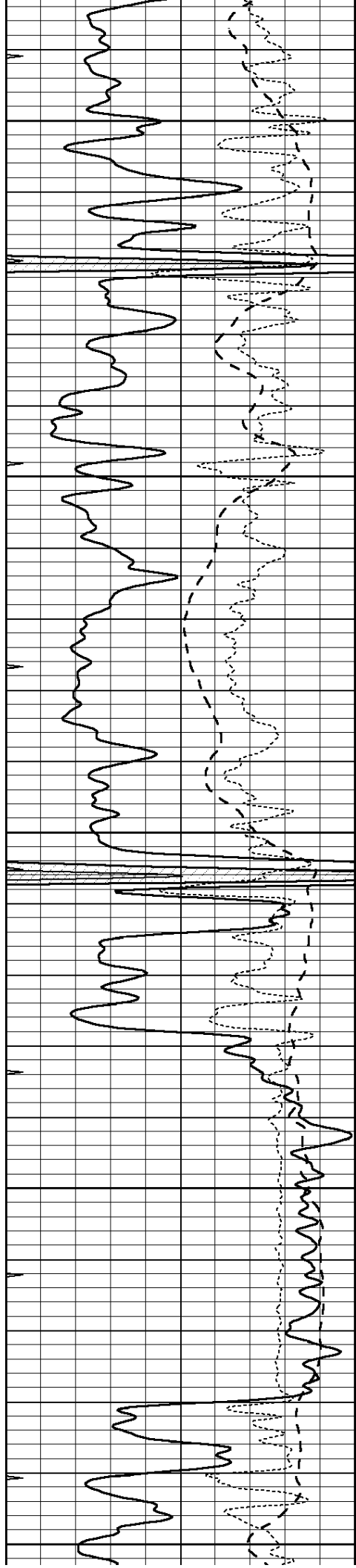
2800

2850

2900

2950





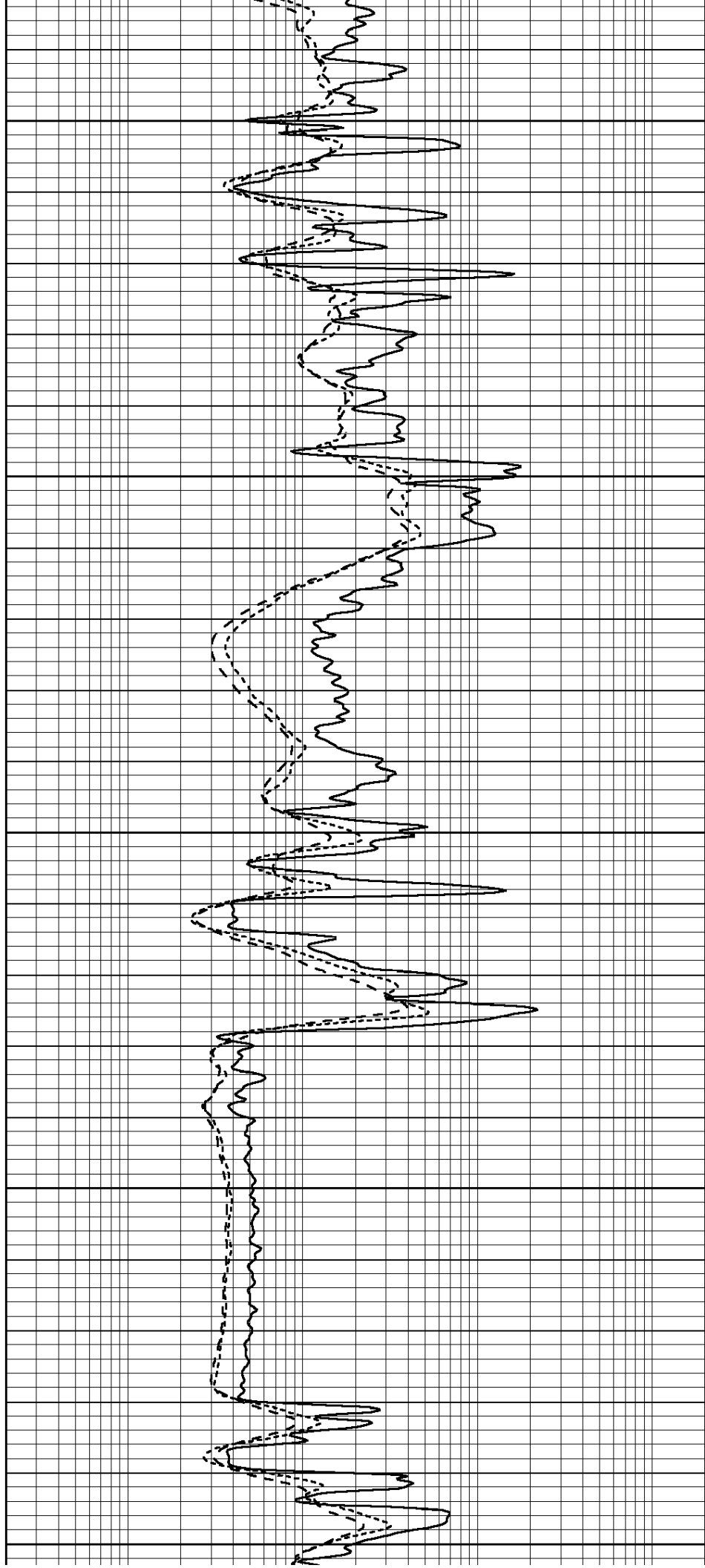
3000

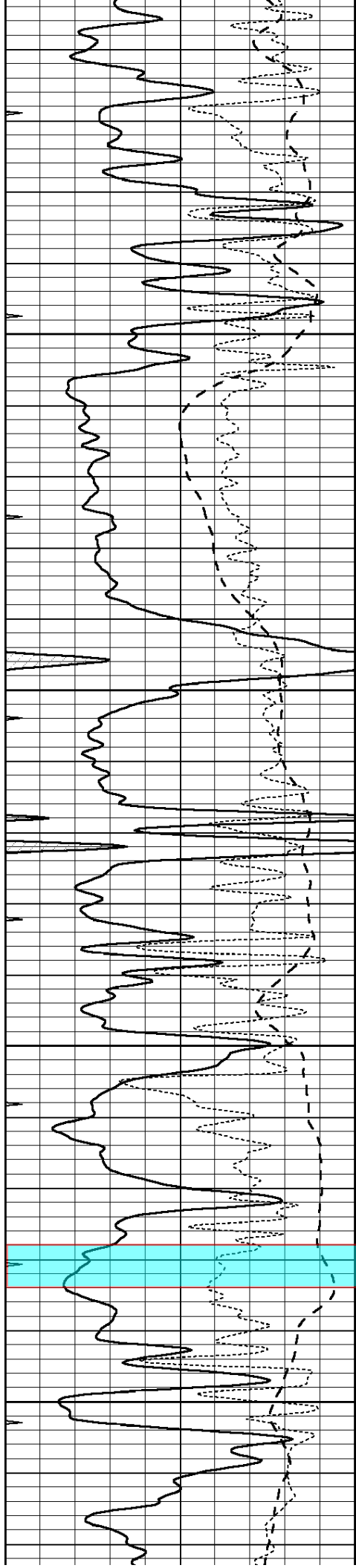
3050

3100

3150

3200



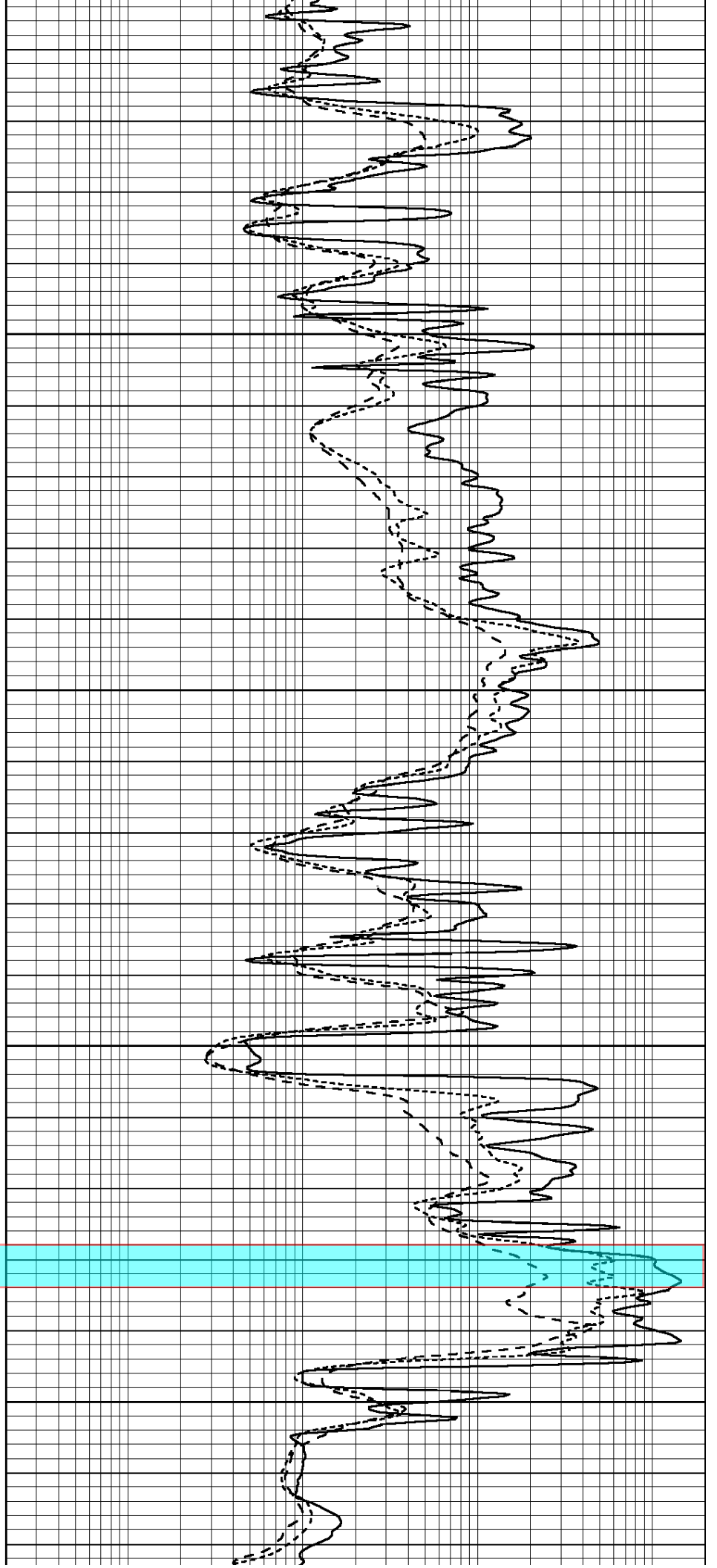


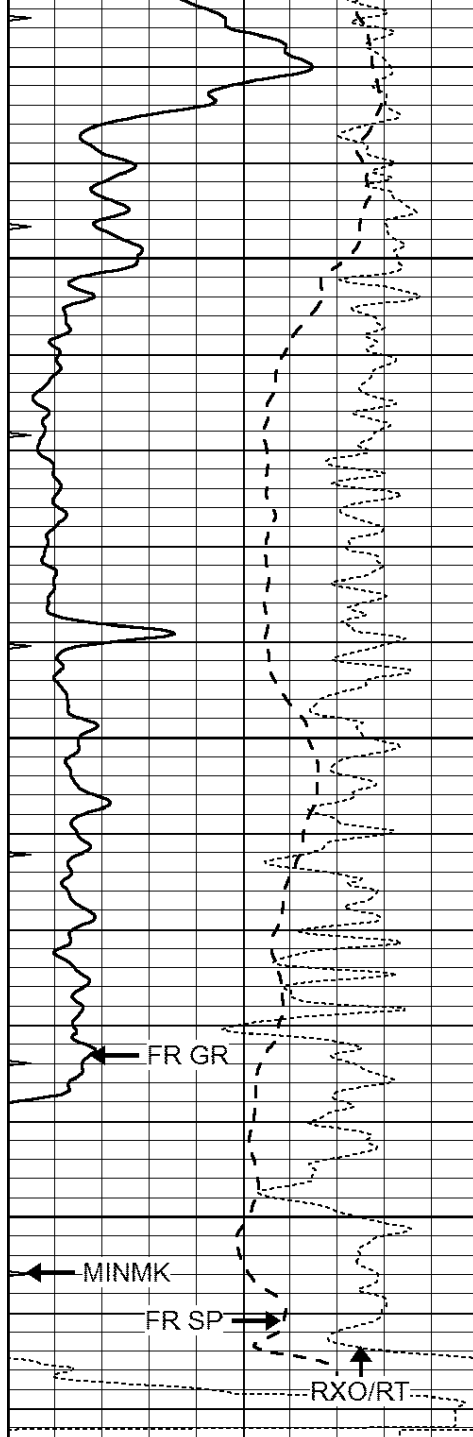
3250

3300

3350

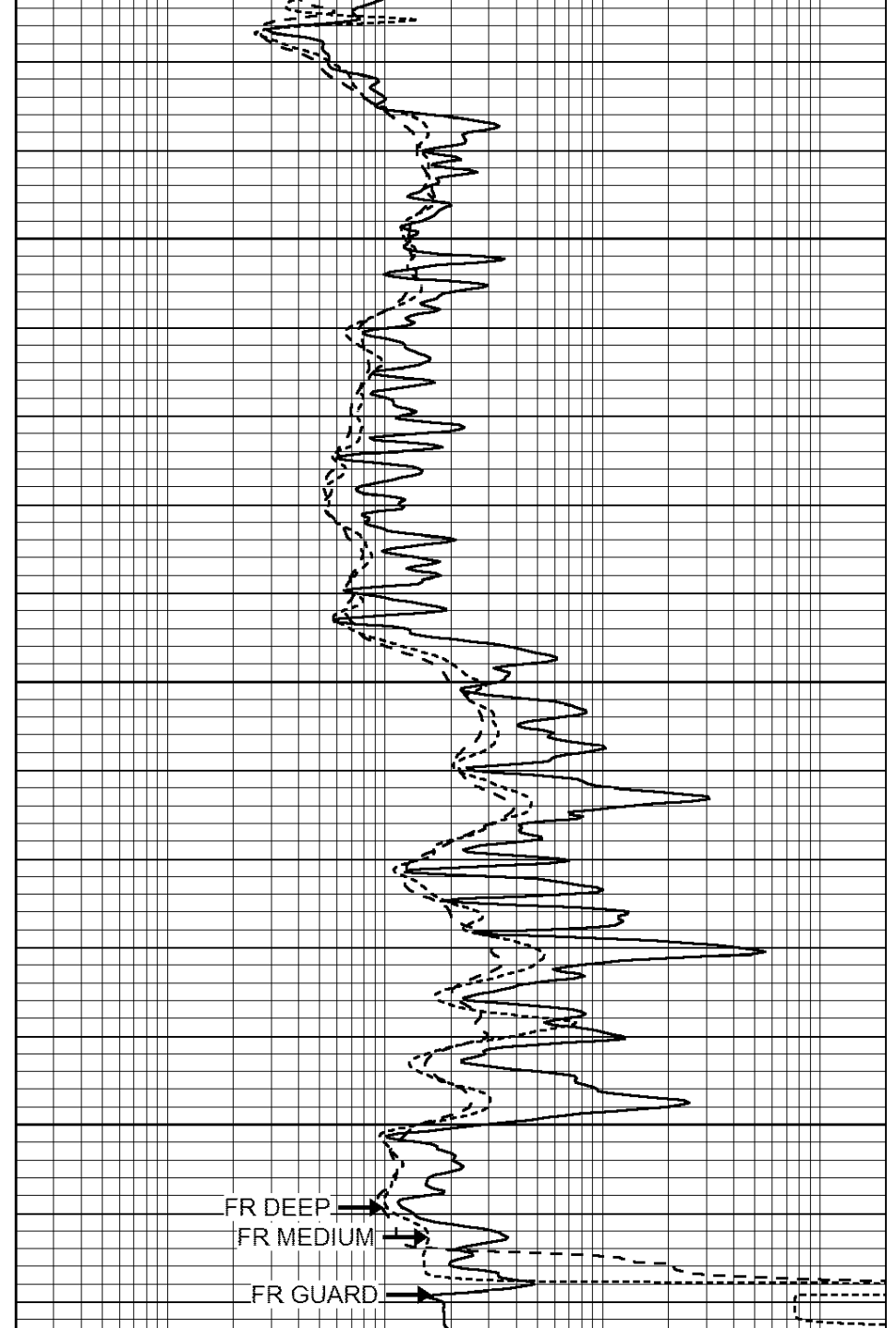
3400





3450
3500
3550
LTD 3571

0	GAMMA RAY (GAPI)	150
-100	SP (mV)	100
-250	Rxo/Rt	50
0	MINMK	20



0.2	SHALLOW GUARD (Ohm-m)	2000
0.2	DEEP INDUCTION (Ohm-m)	2000
0.2	MEDIUM INDUCTION (Ohm-m)	2000

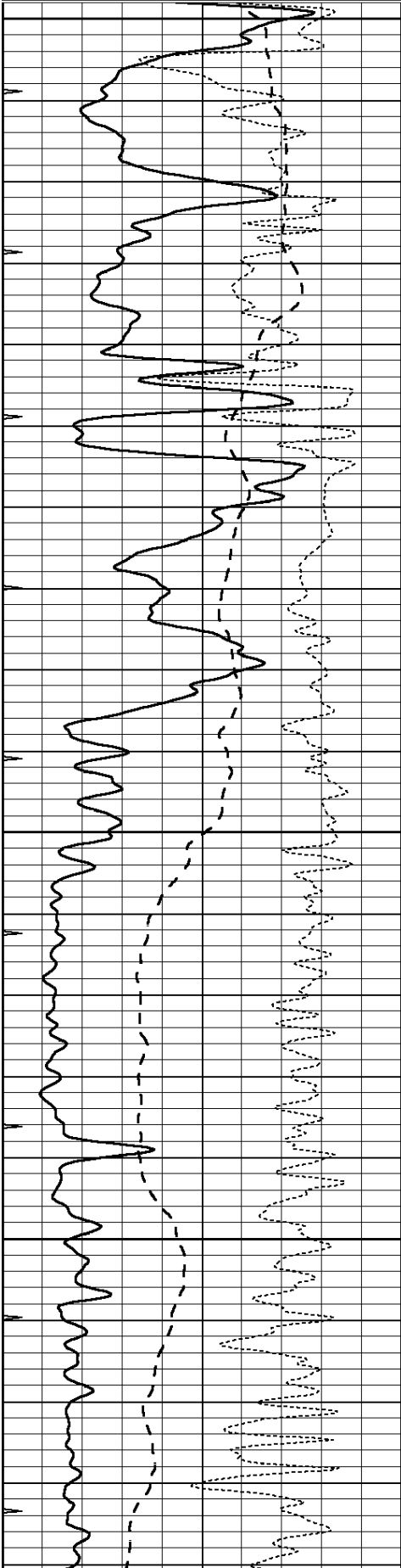


REPEAT SECTION

Database File: 30504ddn.db
 Dataset Pathname: pass2.11
 Presentation Format: _dil
 Dataset Creation: Sun May 10 20:22:23 2015
 Charted by: Depth in Feet scaled 1:240

0	GAMMA RAY (GAPI)	150
-100	SP (mV)	100
-250	Rxo/Rt	50
0	MINMK	20

0.2	SHALLOW GUARD (Ohm-m)	2000
0.2	DEEP INDUCTION (Ohm-m)	2000
0.2	MEDIUM INDUCTION (Ohm-m)	2000

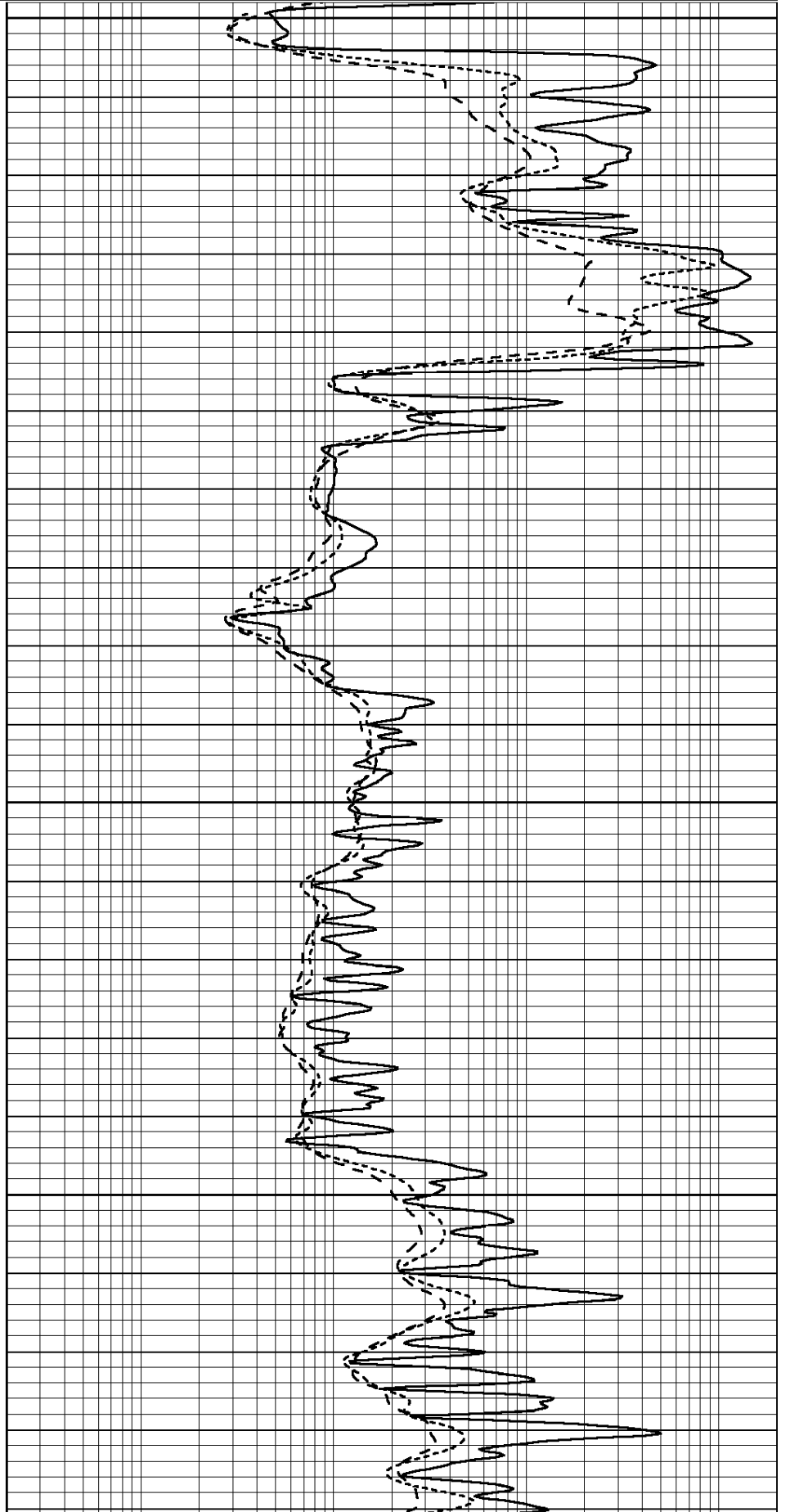


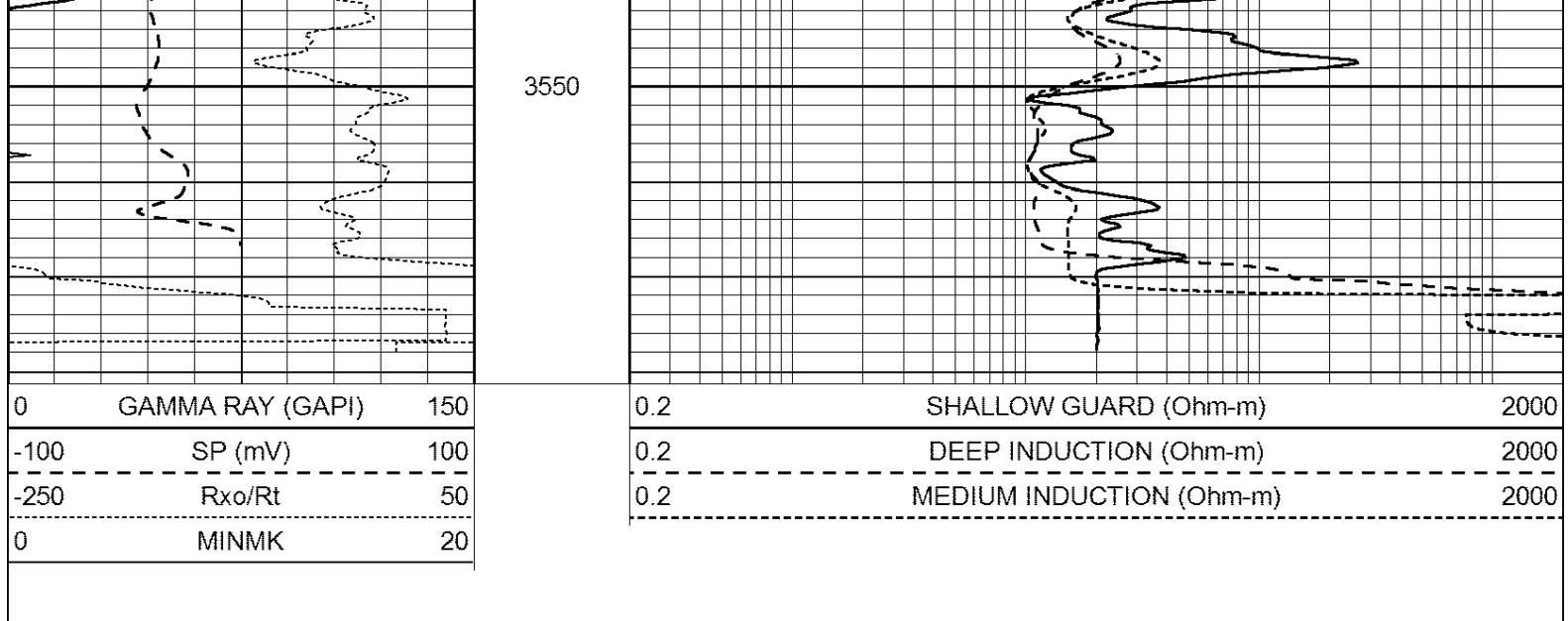
3350

3400

3450

3500





Calibration Report

Database File: 30504ddn.db
 Dataset Pathname: pass3.5
 Dataset Creation: Sun May 10 21:23:06 2015 by Calc Open-Cased 090629

Dual Induction Calibration Report

Serial-Model: PROBE8-DILG
 Surface Cal Performed: Sun May 10 19:54:09 2015
 Downhole Cal Performed: Mon Jul 28 11:08:27 2008
 After Survey Verification Performed: Mon Jul 28 11:08:27 2008

Surface Calibration

Loop:	Readings			References			Results	
	Air	Loop		Air	Loop		m	b
Deep	0.015	0.648	V	0.000	400.000	mmho/m	620.000	3.000
Medium	0.029	0.796	V	0.000	464.000	mmho/m	590.000	-13.000
Internal:	Zero	Cal		Zero	Cal		m	b
Deep	0.017	0.657	V	0.000	400.000	mmho/m	625.153	-10.619
Medium	0.016	0.757	V	0.000	464.000	mmho/m	625.992	-9.739

Downhole Calibration

	Readings			References			Results	
	Zero	Cal		Zero	Cal		m'	b'
Deep	0.000	0.000	mmho/m	2.011	405.777	mmho/m	1.000	0.000
Medium	0.000	0.000	mmho/m	7.590	503.393	mmho/m	1.000	0.000
LL3		7.500	V		1500.000	Ohm-m		
		0.000	V		20.000	Ohm-m		
		-7.200	V		3800.000	mmho-m		

After Survey Verification

	Readings			Targets			Results	
	Zero	Cal		Zero	Cal		m'	b'
Deep	0.000	0.000	mmho/m	0.000	0.000	mmho/m	0.000	0.000
Medium	0.000	0.000	mmho/m	0.000	0.000	mmho/m	0.000	0.000
LL3		1.000	Ohm-m		1.000	Ohm-m		
		0.000	Ohm-m		0.000	Ohm-m		
		1.000	mmho-m		1.000	mmho-m		

Compensated Density Calibration Report

Serial-Model:	GEAR3-GEARHART
Source / Verifier:	143 / 143
Master Calibration Performed:	Sun May 10 19:53:41 2015
Before Survey Verification Performed:	
After Survey Verification Performed:	

Master Calibration

	Density		Far Detector	Near Detector	
Magnesium	1.710	g/cc	881.29	468.35	cps
Aluminum	2.580	g/cc	210.51	354.56	cps
Spine Angle = 79.00			Density/Spine Ratio = 0.596		
	Size		Reading		
Small Ring	8.00	in	4.29	V	
Large Ring	14.00	in	6.24	V	

Before Survey Verification

Target	Measured
g/cc	g/cc
g/cc	g/cc
g/cc	g/cc

After Survey Verification

Target	Measured
g/cc	g/cc
g/cc	g/cc
g/cc	g/cc

Compensated Neutron Calibration Report

Serial Number:	6l
Tool Model:	G

CALIBRATION

Detector	Readings	Target	Normalization
Short Space	1.00 cps	1.00 cps	1.0000
Long Space	1.00 cps	1.00 cps	1.0000

PRE-SURVEY VERIFICATION

	Detector	Readings	Measured	Target
1)	Short Space	cps		
	Long Space	cps	pu	pu
2)	Short Space	cps		
	Long Space	cps	pu	
3)	Short Space	cps		
	Long Space	cps	pu	

POST-SURVEY VERIFICATION

	Detector	Readings	Measured	Target
1)	Short Space	cps		
	Long Space	cps	pu	pu

2)	Short Space	cps		
	Long Space	cps	pu	pu
3)	Short Space	cps		
	Long Space	cps	pu	pu

Gamma Ray Calibration Report

Serial Number:	GR6	
Tool Model:	OPEN	
Performed:	Sun May 10 18:59:16 2015	
Calibrator Value:	150.0	GAPI
Background Reading:	0.0	cps
Calibrator Reading:	276.0	cps
Sensitivity:	0.8000	GAPI/cps