



NABORS

COMPLETION & PRODUCTION SERVICES CO.

SEGMENTED CEMENT BOND LOG

Company SHELBY RESOURCES, LLC.
 Well JERRY 'S UNIT #1-15
 Field WILDCAT
 County BARTON
 State KANSAS
 Country USA

Company SHELBY RESOURCES, LLC.
 Well JERRY 'S UNIT #1-15
 Field WILDCAT
 County BARTON
 State KANSAS
 Country USA

Location: API # : 15-009-26100-0000
 193' FNL & 2277' FWL
 NW - NE - NE - NW
 SEC 15 TWP 18S RGE 14W
 Permanent Datum GROUND LEVEL Elevation 1926
 Log Measured From KELLY BUSHING 13' A.G.L.
 Drilling Measured From KELLY BUSHING
 Other Services Elevation
 K.B. 1939
 D.F. 1937
 G.L. 1926

Date	5-15-15
Run Number	ONE
Depth Driller	3570
Depth Logger	3479
Bottom Logged Interval	3476
Top Log Interval	2450
Open Hole Size	7 7/8
Type Fluid	WATER
Density / Viscosity	
Max. Recorded Temp.	2550
Estimated Cement Top	
Time Well Ready	
Time Logger on Bottom	3362
Equipment Number	3362
Location	HAYS, KS
Recorded By	JEREMY SEIB
Witnessed By	CHRIS GOTTSCHALK

Borehole Record				Tubing Record			
Run Number	Bit	From	To	Size	Weight	From	To
ONE	12 1/4	0	947				
TWO	7 7/8	947	3570				

Casing Record	Size	Wgt/Ft	Top	Bottom
Surface String	8 5/8		0	947
Prot. String				
Production String	5 1/2		0	
Liner				

<<< Fold Here >>>

All interpretations are opinions based on inferences from electrical or other measurements and we cannot and do not guarantee the accuracy or correctness of any interpretation, and we shall not, except in the case of gross or willful negligence on our part, be liable or responsible for any loss, costs, damages, or expenses incurred or sustained by anyone resulting from any interpretation made by any of our officers, agents or employees. These interpretations are also subject to our general terms and conditions set out in our current Price Schedule.

Comments

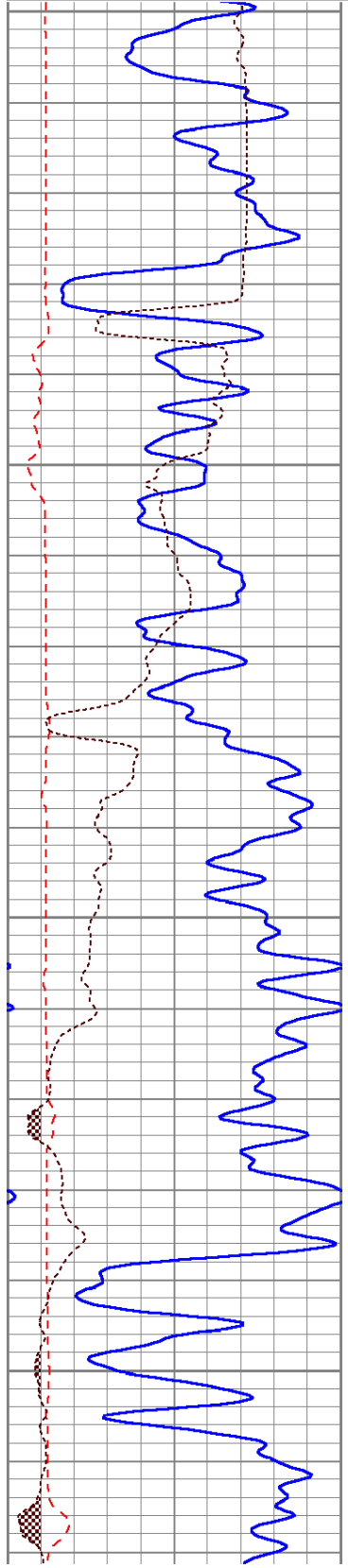
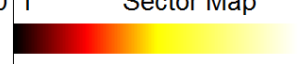
THANK YOU FOR USING NABORS COMPLETION & PRODUCTION SERVICES, HAYS, KS (785) 628-6395
 DIRECTIONS: JCT OF HWY 281 & HWY 4 - 3 SOUTH TO RD.(NW 90TH) - 1/2 MILE WEST - SOUTH INTO

Database File: 30497.db
 Dataset Pathname: pass3.2
 Presentation Format: sector1
 Dataset Creation: Fri May 15 13:38:28 2015
 Charted by: Depth in Feet scaled 1:240

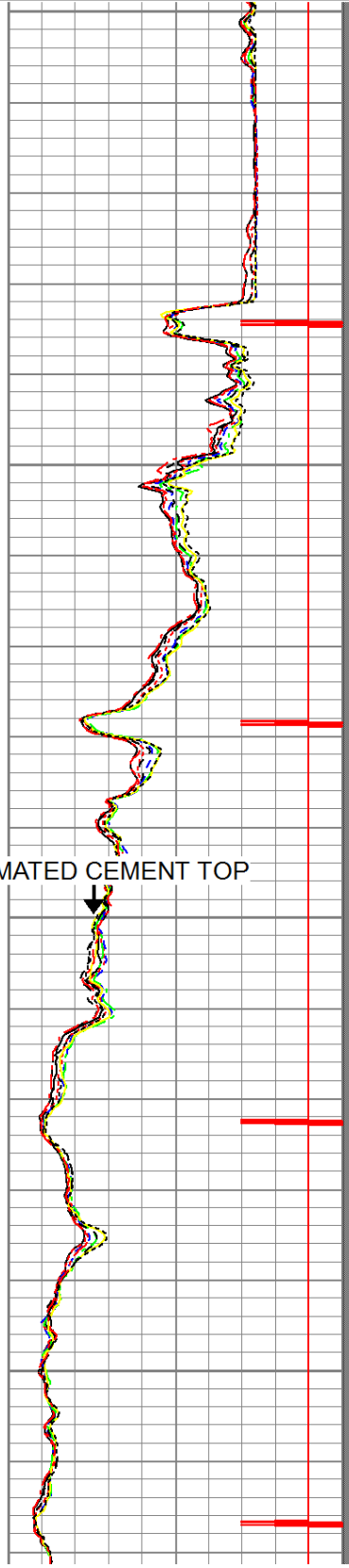
0	GR (GAPI)	150
200	TT3FT (usec)	1000
0	AMP3FT (mV)	100

9	CCL	-1
0	AMPS1	100
0	AMPS2	100
0	AMPS3	100
0	AMPS4	100
0	AMPS5	100
0	AMPS6	100
0	AMPS7	100
0	AMPS8	100

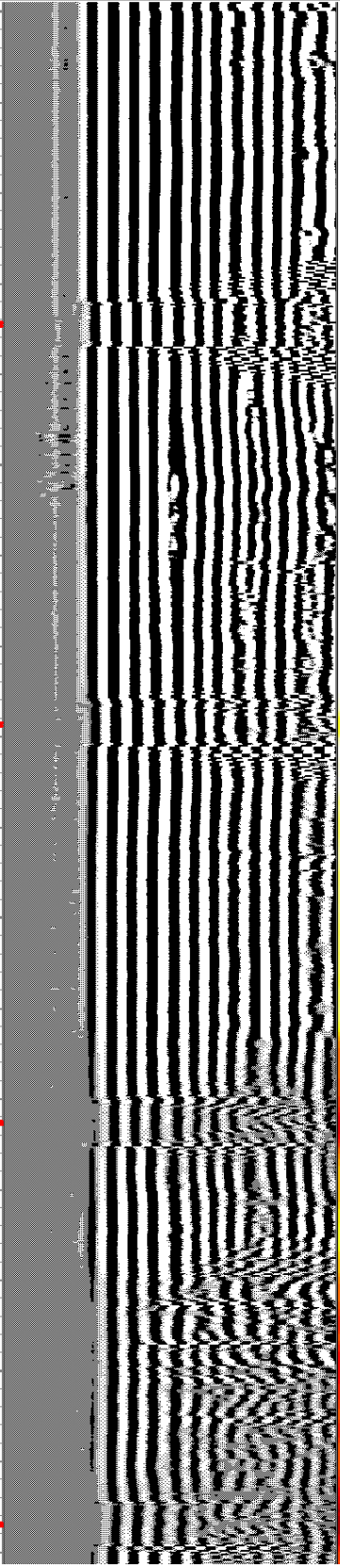
200	WVF5FT	1000	1	Sector Map	8
-----	--------	------	---	------------	---

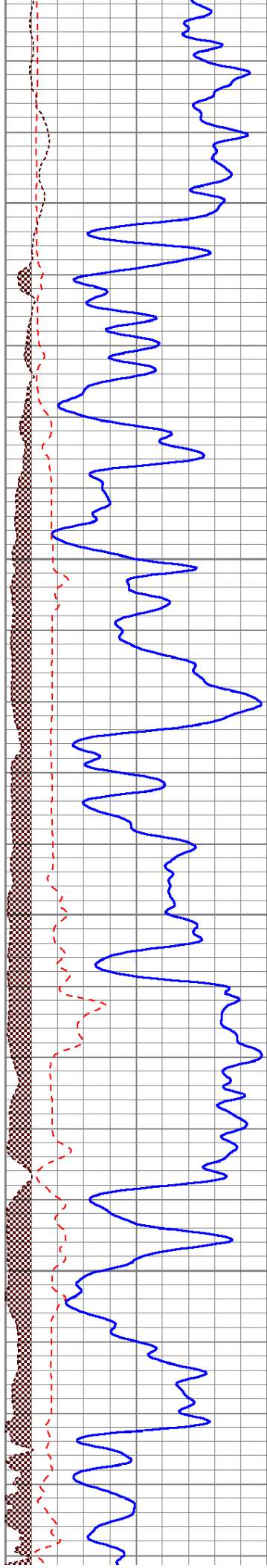


2450
2500
2550
2600



ESTIMATED CEMENT TOP



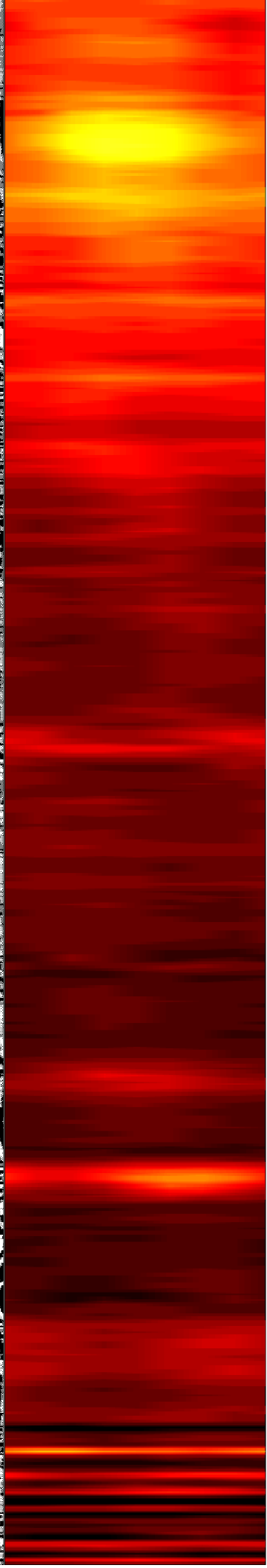
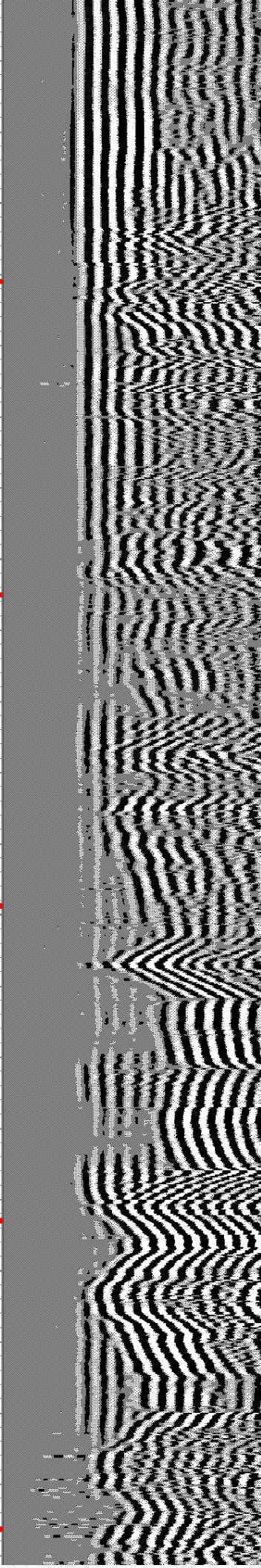
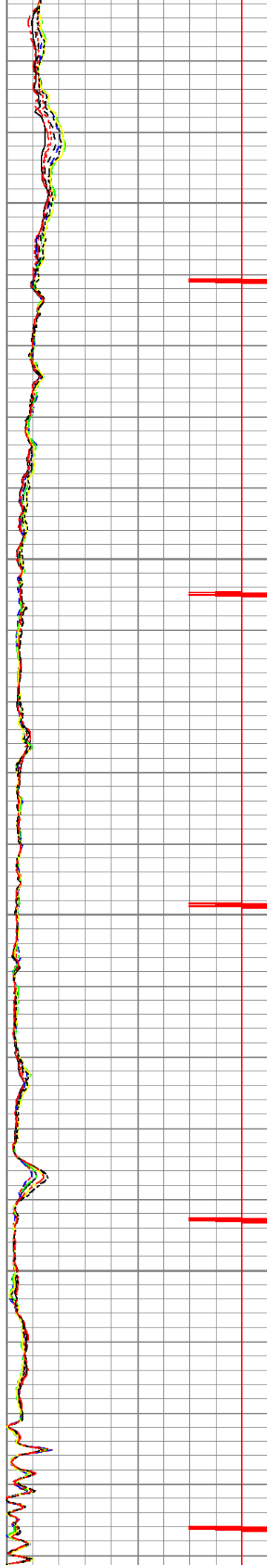


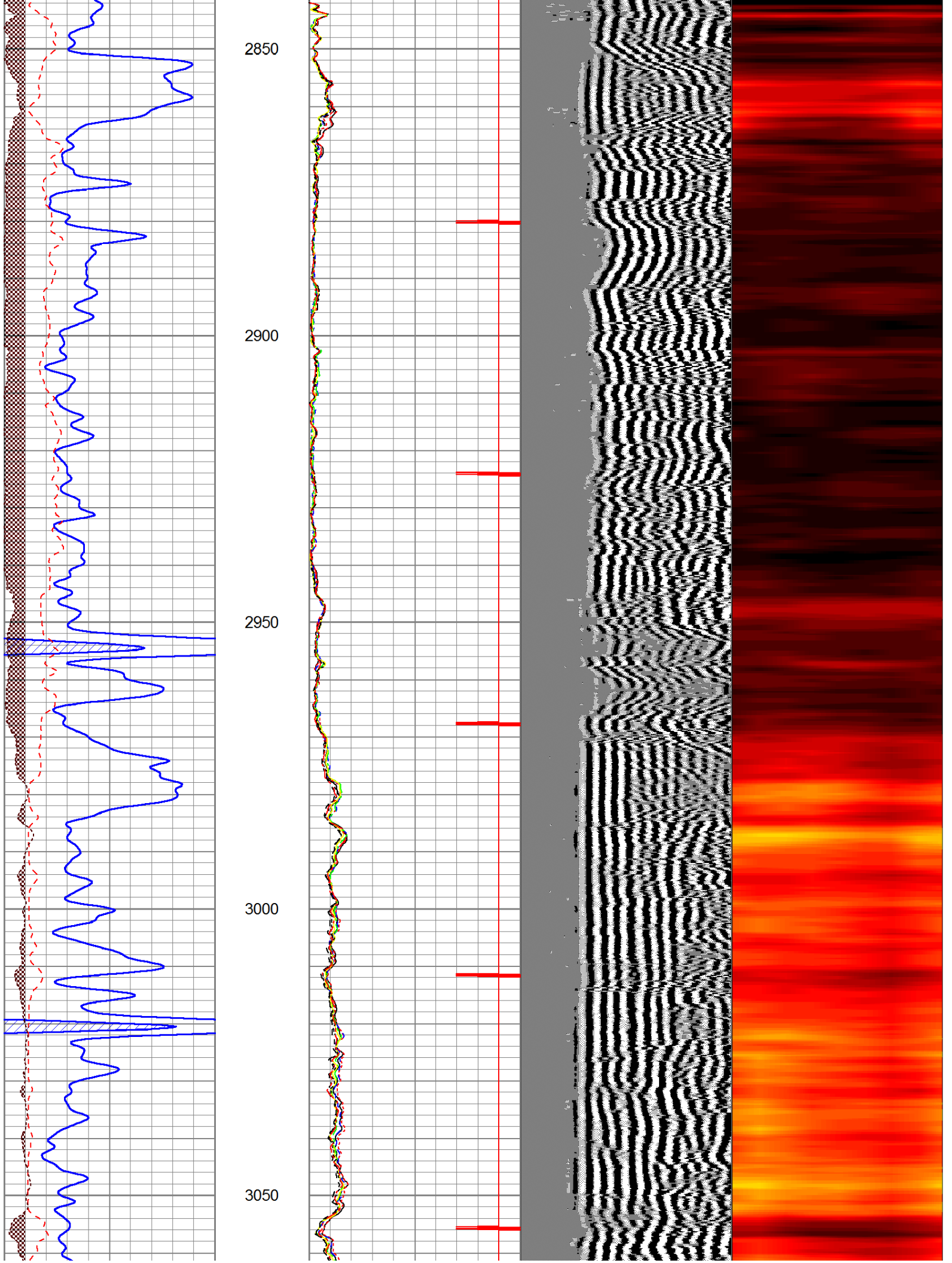
2650

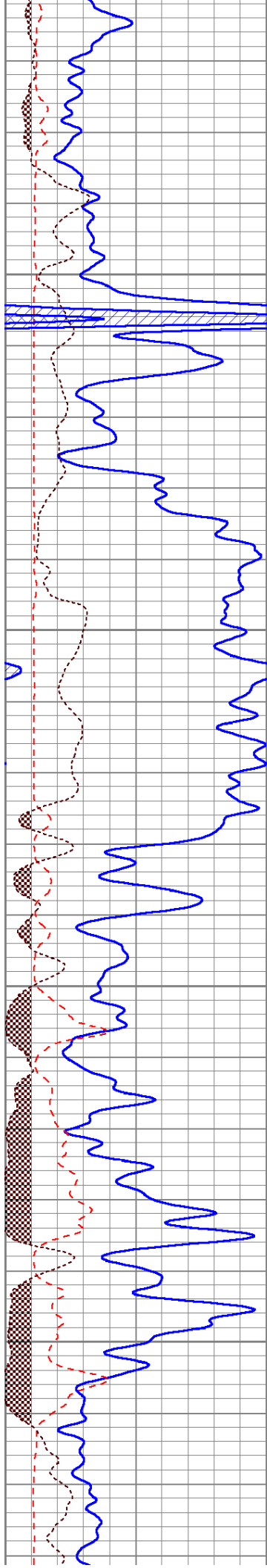
2700

2750

2800





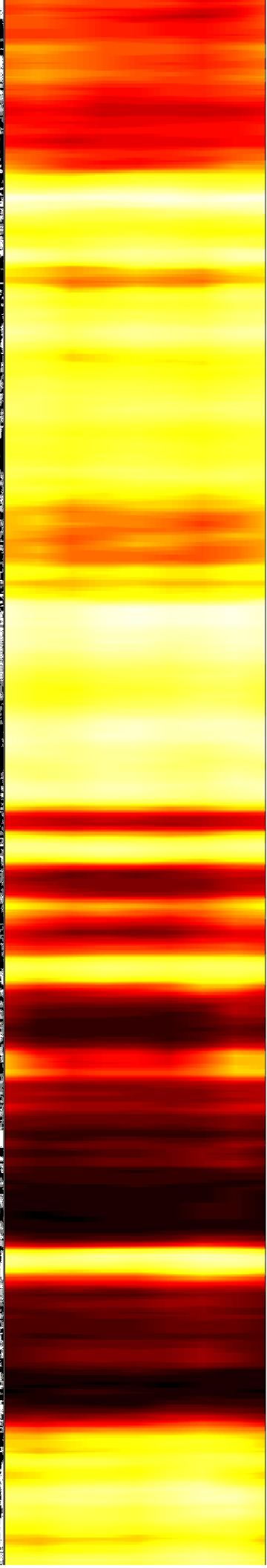
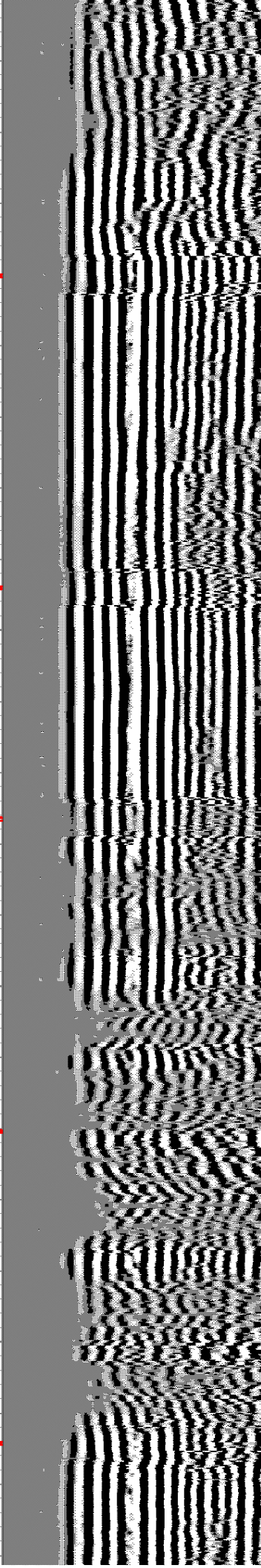
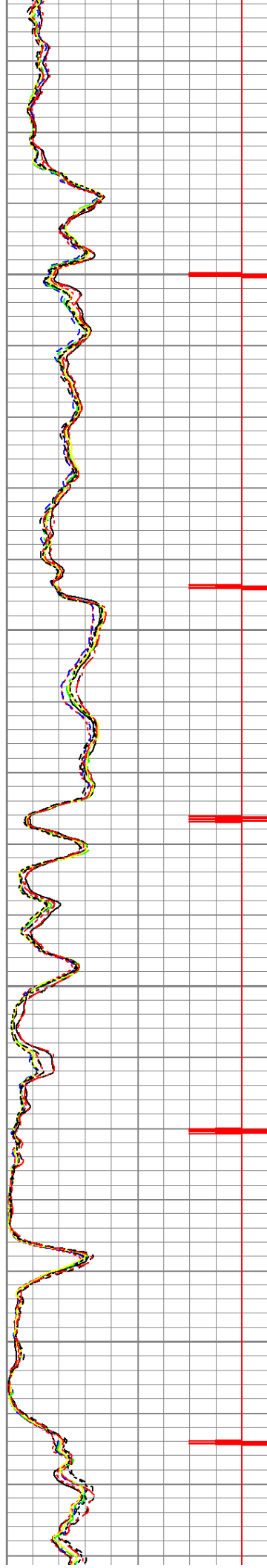


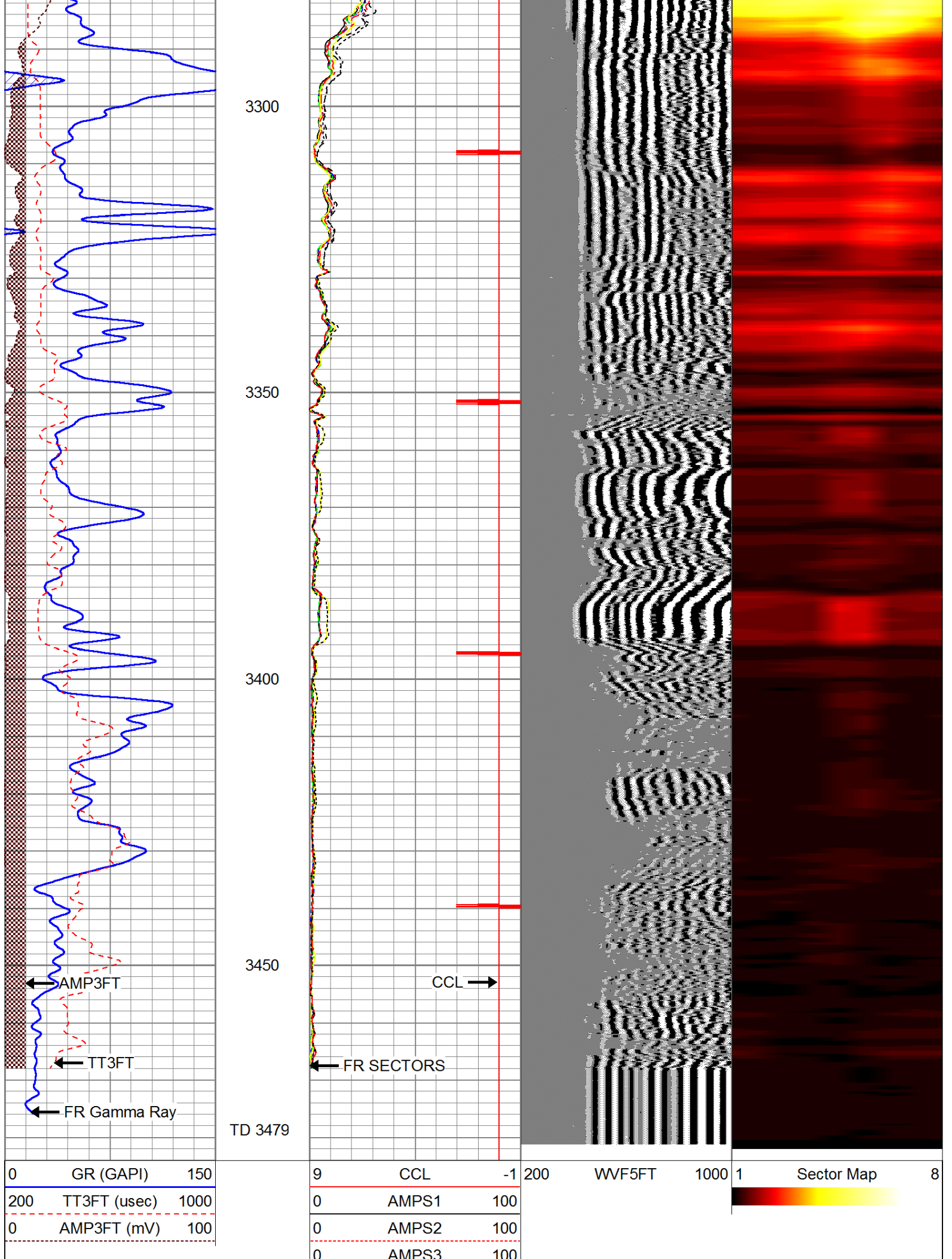
3100

3150

3200

3250





0	GR (GAPI)	150
200	TT3FT (usec)	1000
0	AMP3FT (mV)	100

9	CCL	-1
0	AMPS1	100
0	AMPS2	100
0	AMPS3	100

1	Sector Map	8
---	------------	---

0	AMPS4	100
0	AMPS5	100
0	AMPS6	100
0	AMPS7	100
0	AMPS8	100