



**COMPLETION  
& PRODUCTION  
SERVICES CO.**

**MICRO  
LOG**

Company SHELBY RESOURCES, LLC.  
Well JERRY'S UNIT #1-15  
Field WILDCAT  
County BARTON  
State KANSAS

Company SHELBY RESOURCES, LLC.  
Well JERRY'S UNIT #1-15  
Field WILDCAT  
County BARTON  
State KANSAS

Location: API # : 15-009-26100-0000  
SEC 15 TWP 18S RGE 14W  
Permanent Datum GROUND LEVEL Elevation 1926  
Log Measured From KELLY BSUHING 13' A.G.L.  
Drilling Measured From KELLY BUSHING  
Other Services  
CDL/CNL  
DIL/SON  
Elevation  
K.B. 1939  
D.F. 1937  
G.L. 1926

Date	5/10/15		
Run Number	TWO		
Depth Driller	3570		
Depth Logger	3571		
Bottom Logged Interval	3546		
Top Log Interval	2800		
Casing Driller	8 5/8"@947'		
Casing Logger	944		
Bit Size	7 7/8"		
Type Fluid in Hole	CHEMICAL MUD	CHLORIDES 3,000 PPM	
Density / Viscosity	8.8/58		
pH / Fluid Loss	10.0/8.0		
Source of Sample	FLOWLINE		
Rm @ Meas. Temp	.800@75F		
Rmt @ Meas. Temp	.600@75F		
Rmc @ Meas. Temp	.960@75F		
Source of Rmf / Rmc	MEASUREMENT		
Rm @ BHT	.536@112F		
Time Circulation Stopped	3.5 HOURS		
Time Logger on Bottom	7:30 P.M.		
Maximum Recorded Temperature	112F		
Equipment Number	4010		
Location	HAYS, KANSAS		
Recorded By	JEFF LUEBBERS		
Witnessed By	JEREMY SCHWARTZ		

<<< Fold Here >>>

All interpretations are opinions based on inferences from electrical or other measurements and we cannot and do not guarantee the accuracy or correctness of any interpretation, and we shall not, except in the case of gross or willful negligence on our part, be liable or responsible for any loss, costs, damages, or expenses incurred or sustained by anyone resulting from any interpretation made by any of our officers, agents or employees. These interpretations are also subject to our general terms and conditions set out in our current Price Schedule.

**Comments**

THANK YOU FOR USING "NABORS" HAYS, KANSAS (785) 628-6395  
HOISINGTON, KS. W. TO TO "HWY 4 & 281) 3S. ON "BOYD RD." TO "NW 90TH", 1/2W., S. INTO

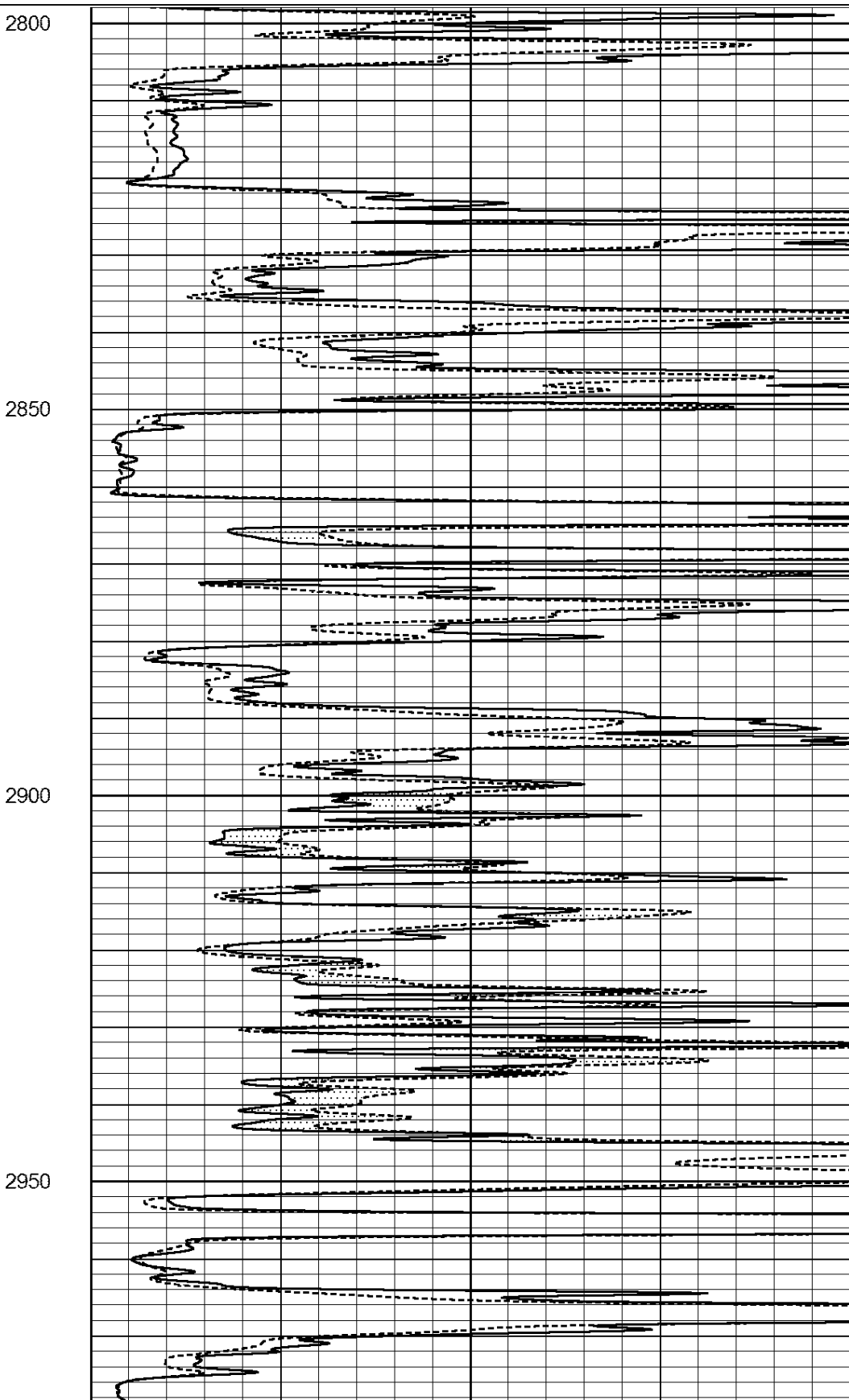
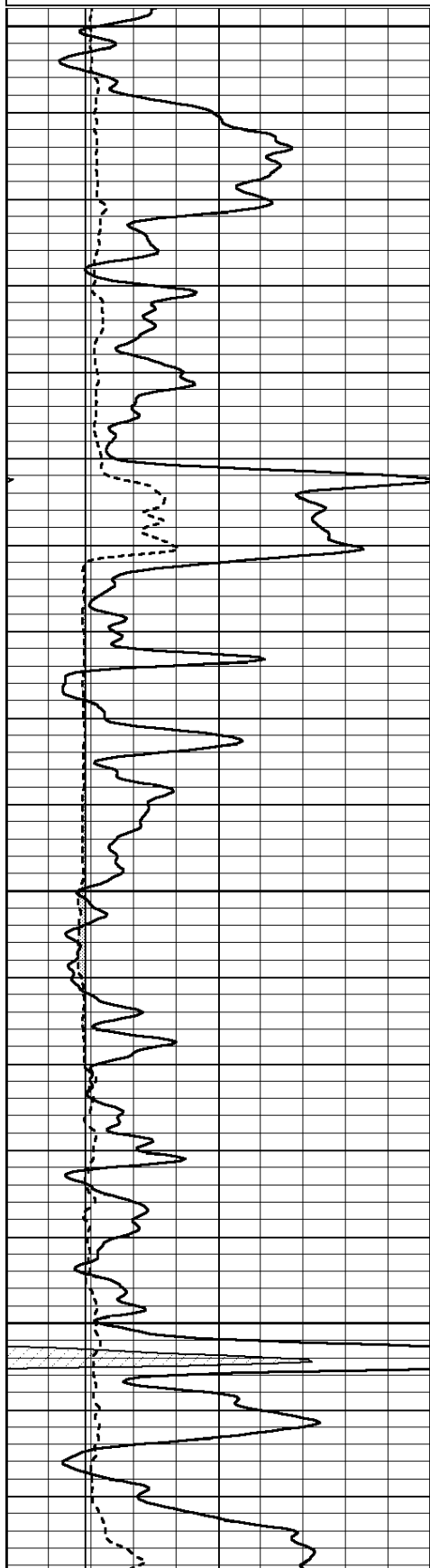


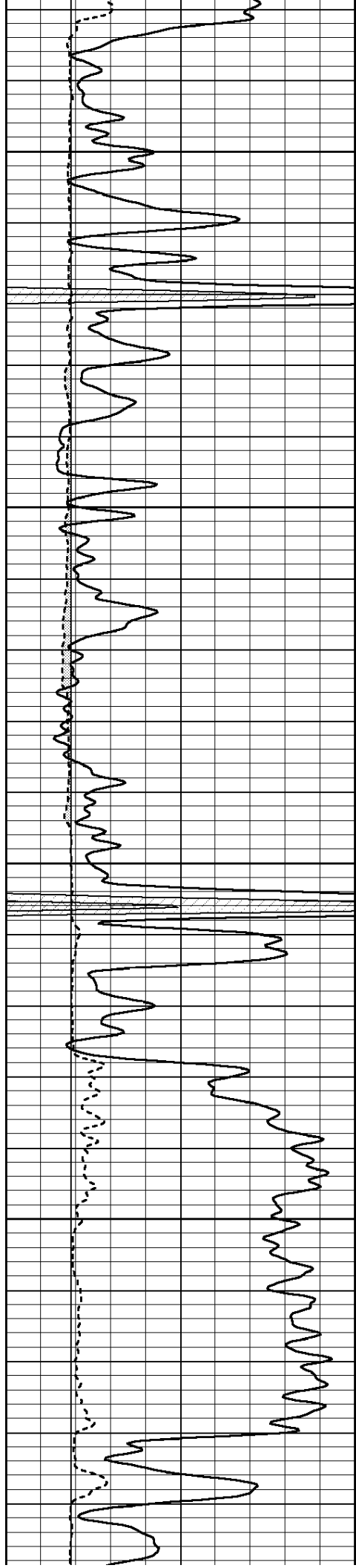
**MAIN SECTION**

Database File: 30504ddn.db  
 Dataset Pathname: pass7.2  
 Presentation Format: micro  
 Dataset Creation: Sun May 10 22:45:28 2015 by Calc Open-Cased 090629  
 Charted by: Depth in Feet scaled 1:240

0	GR (GAPI)	150
6	MELCAL (in)	16

0	MEL20 (Ohm-m)	40
0	MEL15 (Ohm-m)	40



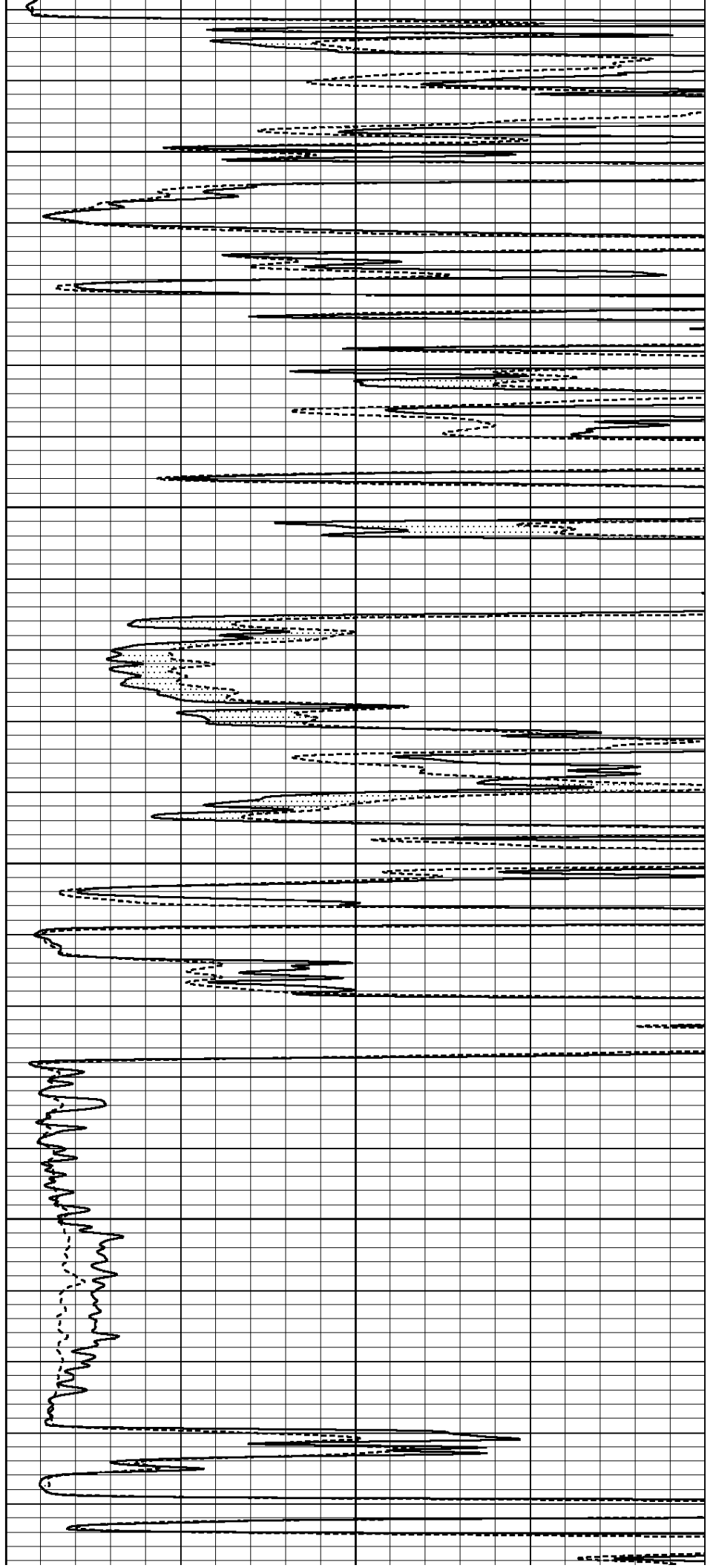


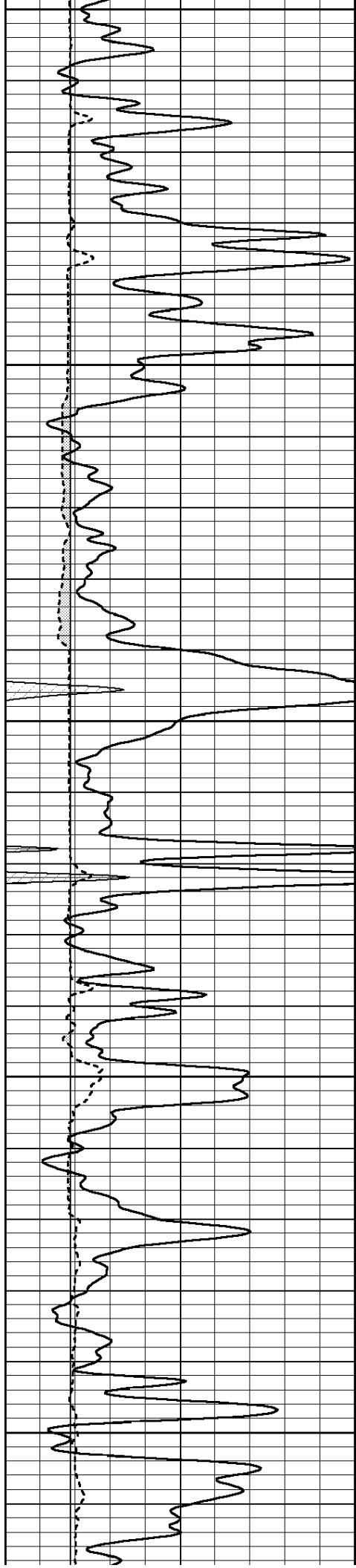
3000

3050

3100

3150





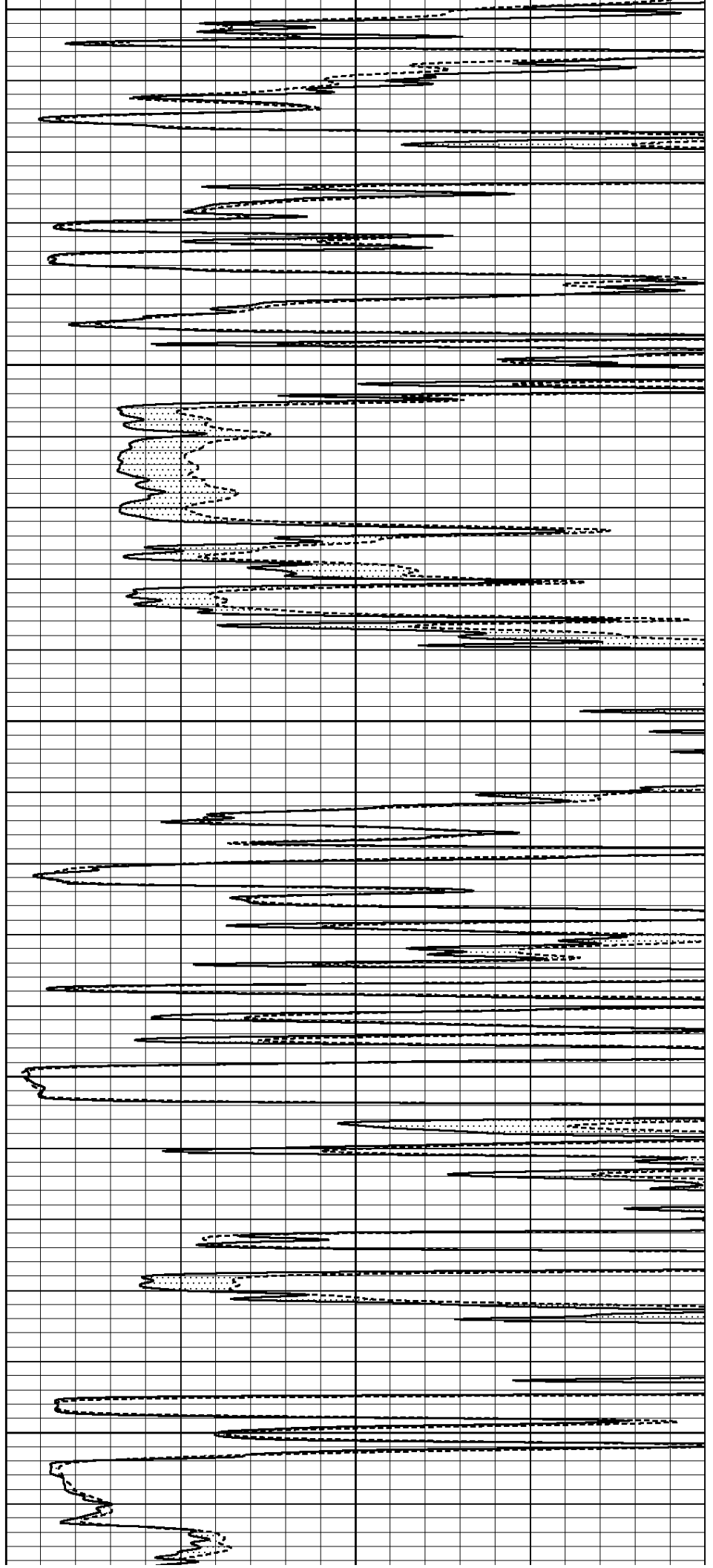
3200

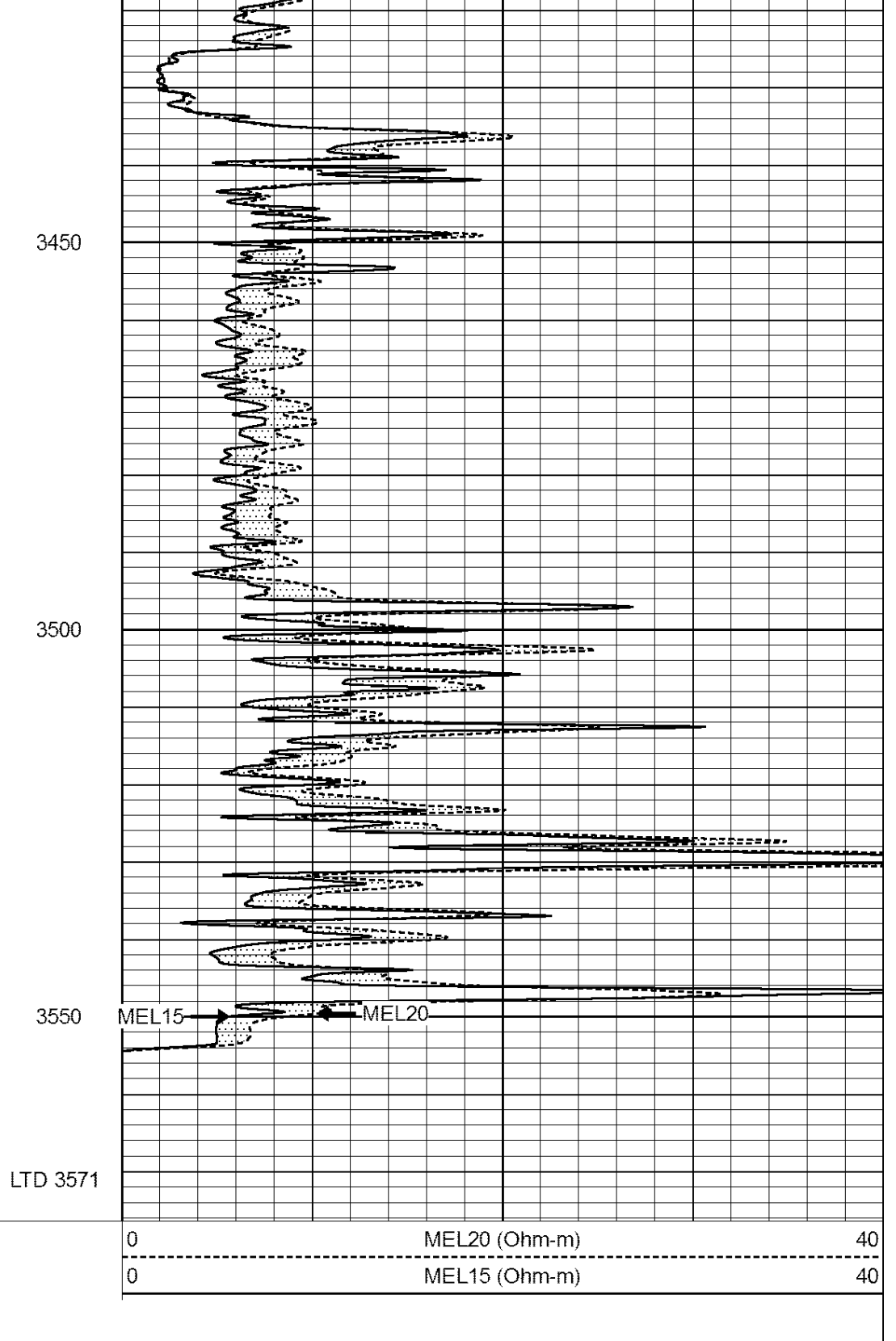
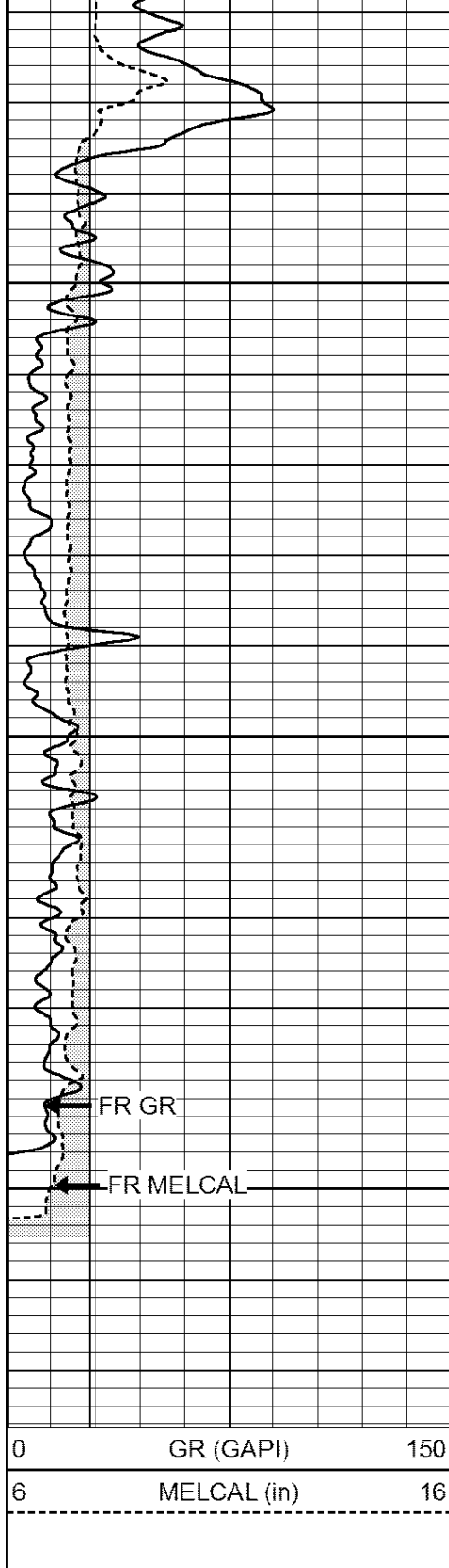
3250

3300

3350

3400



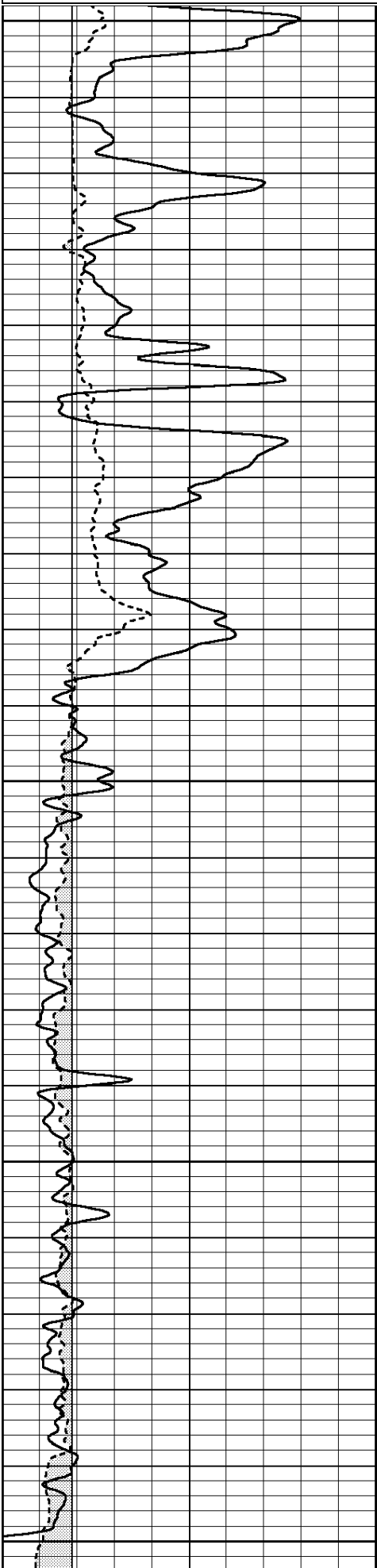


# REPEAT SECTION

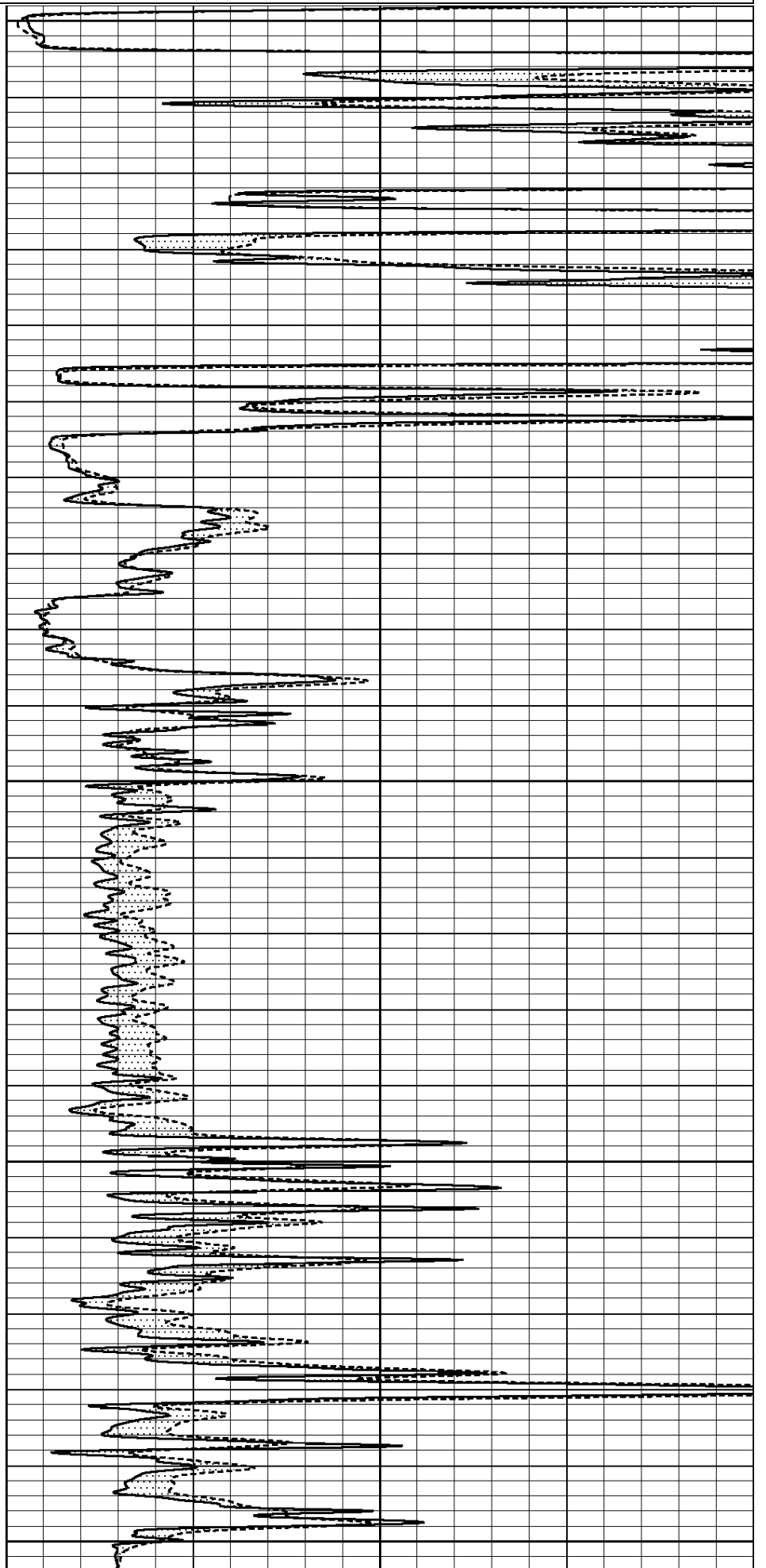
Database File: 30504ddn.db  
 Dataset Pathname: pass6.6  
 Presentation Format: micro  
 Dataset Creation: Sun May 10 22:27:42 2015 by Calc Open-Cased 090629  
 Charted by: Depth in Feet scaled 1:240

0	GR (GAPI)	150
6	MELCAL (in)	16

0	MEL20 (Ohm-m)	40
0	MEL15 (Ohm-m)	40



3350  
3400  
3450  
3500  
3550



0	GR (GAPI)	150
6	MELCAL (in)	16

0	MEL20 (Ohm-m)	40
0	MEL15 (Ohm-m)	40

### Calibration Report

Database File: 30504ddn.db  
 Dataset Pathname: pass7.2  
 Dataset Creation: Sun May 10 22:45:28 2015 by Calc Open-Cased 090629

#### MICRO Calibration Report

Serial Number: MICRO3  
 Tool Model: PROBE  
 Performed: Sun May 10 22:04:02 2015

Caliper Calibration:	Gain=4.293	Offset=-11.754
	Low Cal	High Cal
References	6.200	14.000
Readings	4.182	5.998

1.5" Calibration:	Gain=100.000	Offset=0.000
	Low Cal	High Cal
References	0.000	20.000
Readings	0.004	0.228

2" Calibration:	Gain=160.000	Offset=-1.220
	Low Cal	High Cal
References	0.000	20.000
Readings	0.005	0.175

#### Gamma Ray Calibration Report

Serial Number: GR6  
 Tool Model: OPEN  
 Performed: Sun May 10 18:59:16 2015

Calibrator Value:	150.0	GAPI
Background Reading:	0.0	cps
Calibrator Reading:	276.0	cps
Sensitivity:	0.8000	GAPI/cps