



**COMPENSATED  
DENSITY/NEUTRON  
LOG**

Company PHILLIPS EXPLORATION COMPANY L.C.  
 Well NISWONGER/BROWN UNIT #1-32 MP  
 Field N/A  
 County LOGAN  
 State KANSAS

Company PHILLIPS EXPLORATION COMPANY L.C.  
 Well NISWONGER/BROWN UNIT #1-32 MP  
 Field N/A  
 County LOGAN State KANSAS

Location: 2000' FNL & 50' FWL  
 API # : 15-109-21491-00-00  
 Other Services  
 DIL/MEL  
 Elevation  
 K.B. 3430  
 D.F. 3428  
 G.L. 3422

Date	03/21/17	Run Number	ONE
Depth Driller	5047	Depth Logger	5048
Bottom Logged Interval	5024	Top Log Interval	3600
Casing Driller	8 5/8" @ 321	Casing Logger	321
Bit Size	7 7/8"	Type Fluid in Hole	CHEMICAL MUD
Density / Viscosity	9.2/57	pH / Fluid Loss	11.0/8.0
Source of Sample	FLOWLINE	Rm @ Meas. Temp	.70@62
Rmt @ Meas. Temp	.52@62	Rmc @ Meas. Temp	.84@62
Source of Rmt / Rmc	MEASURED	Rm @ BHT	.34@125
Time Circulation Stopped	2 HOURS	Time Logger on Bottom	125F
Maximum Recorded Temperature	4010	Equipment Number	HAYS, KANSAS
Location	GUS PFANENSTIEL	Recorded By	PAT DEENIHAN
Witnessed By			

<<< Fold Here >>>

All interpretations are opinions based on inferences from electrical or other measurements and we cannot and do not guarantee the accuracy or correctness of any interpretation, and we shall not, except in the case of gross or willful negligence on our part, be liable or responsible for any loss, costs, damages, or expenses incurred or sustained by anyone resulting from any interpretation made by any of our officers, agents or employees. These interpretations are also subject to our general terms and conditions set out in our current Price Schedule.

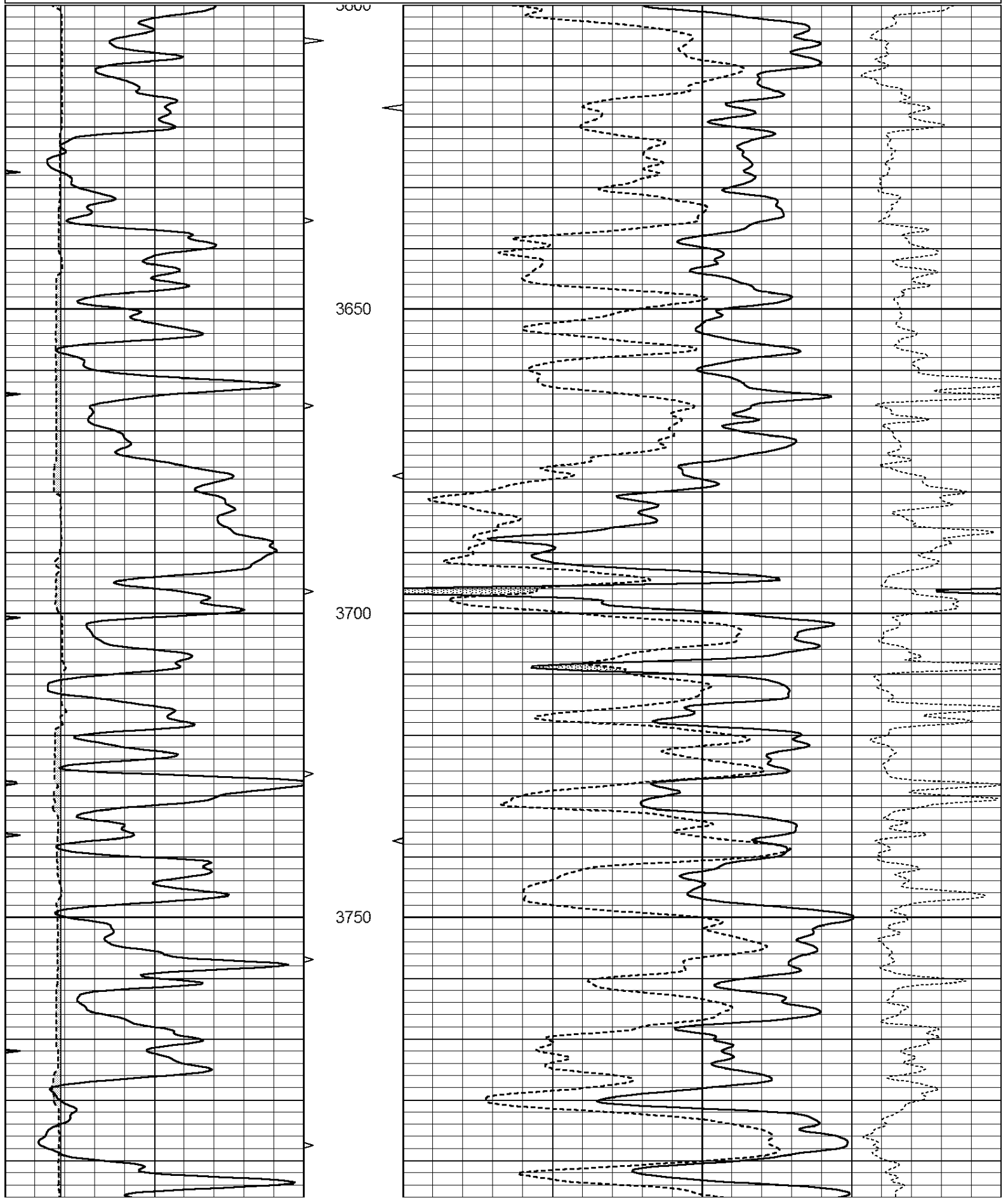
**Comments**

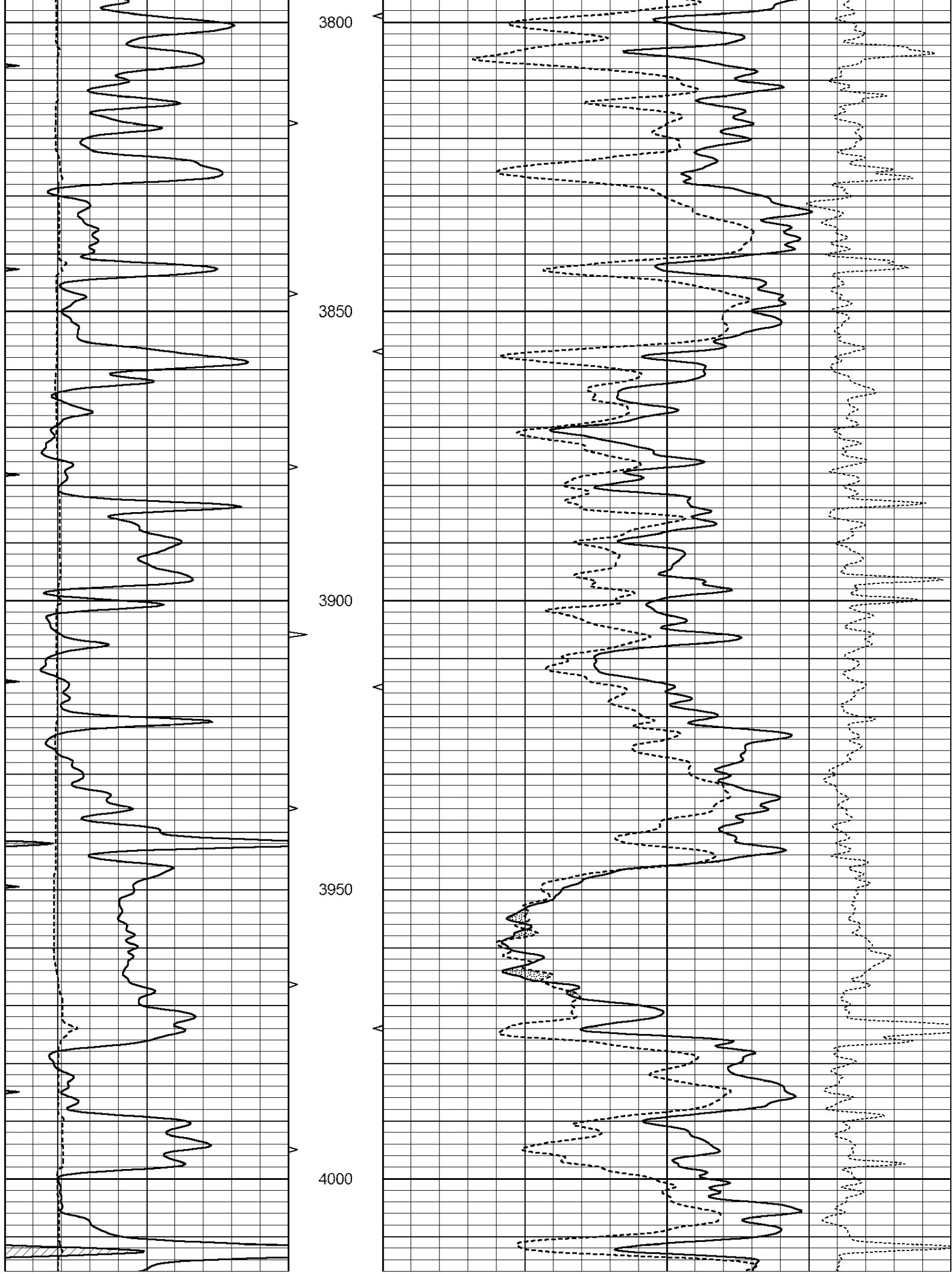
THANK YOU FOR USING ELI WIRELINE, HAYS, KS. (785) 628-6395

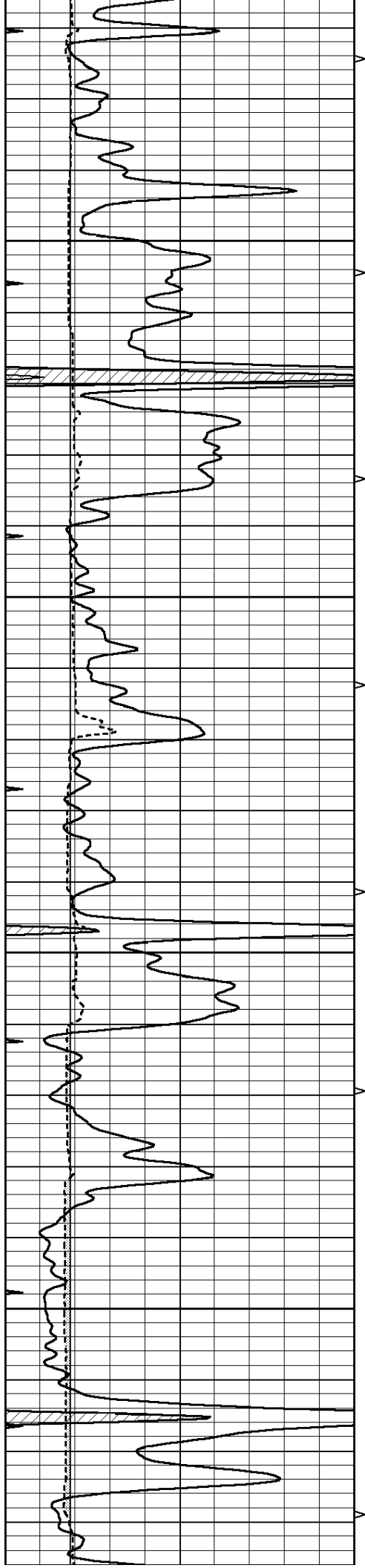
DIRECTIONS  
 SOUTH OF RUSSELL SPRINGS TO ADOBE RD.  
 WEST 5 MILES  
 NORTH INTO.

Database File: 1457ddn.db  
 Dataset Pathname: pass5MAIN  
 Presentation Format: den\_neu  
 Dataset Creation: Tue Mar 21 20:53:18 2017  
 Charted by: Depth in Feet scaled 1:240

0	GAMMA RAY (GAPI)	150	ABHV	30	COMPENSATED DENSITY (pu)	-10
6	CALIPER (in)	16	10 (ft3)	0 30	COMPENSATED NEUTRON (pu)	-10
0	MINMK	20	TBHV		-0.25 CORRECTION (g/cc)	0.25
			0 (ft3)	10		





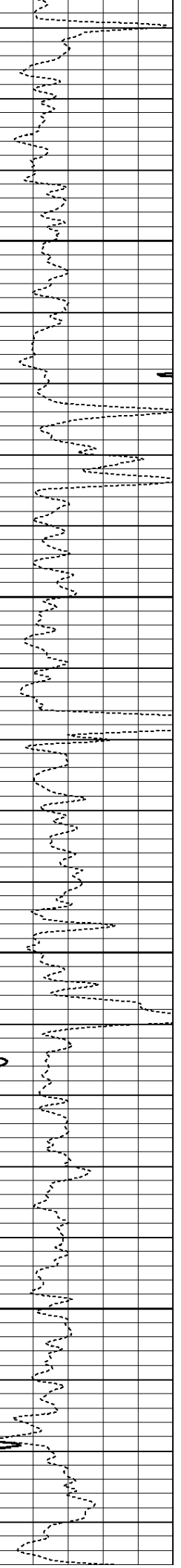
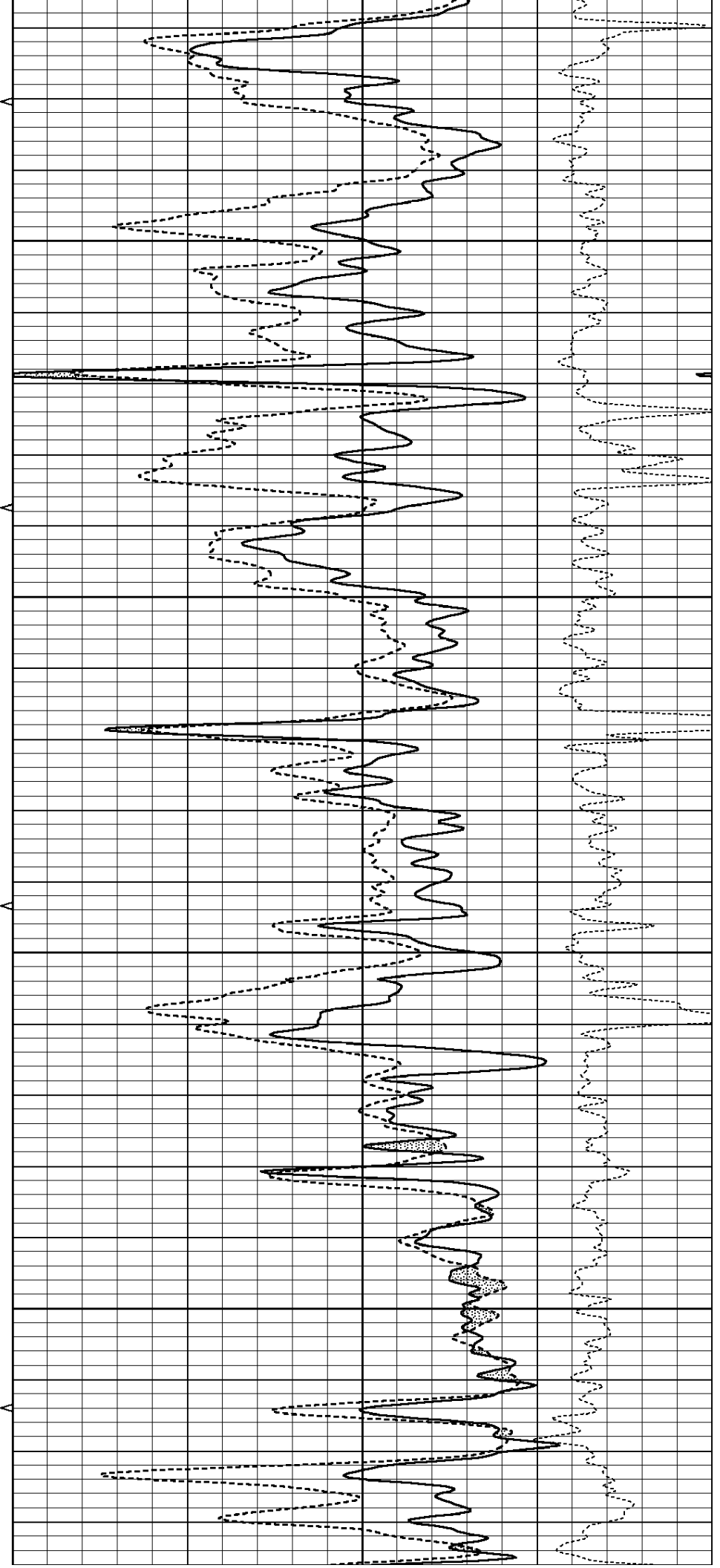


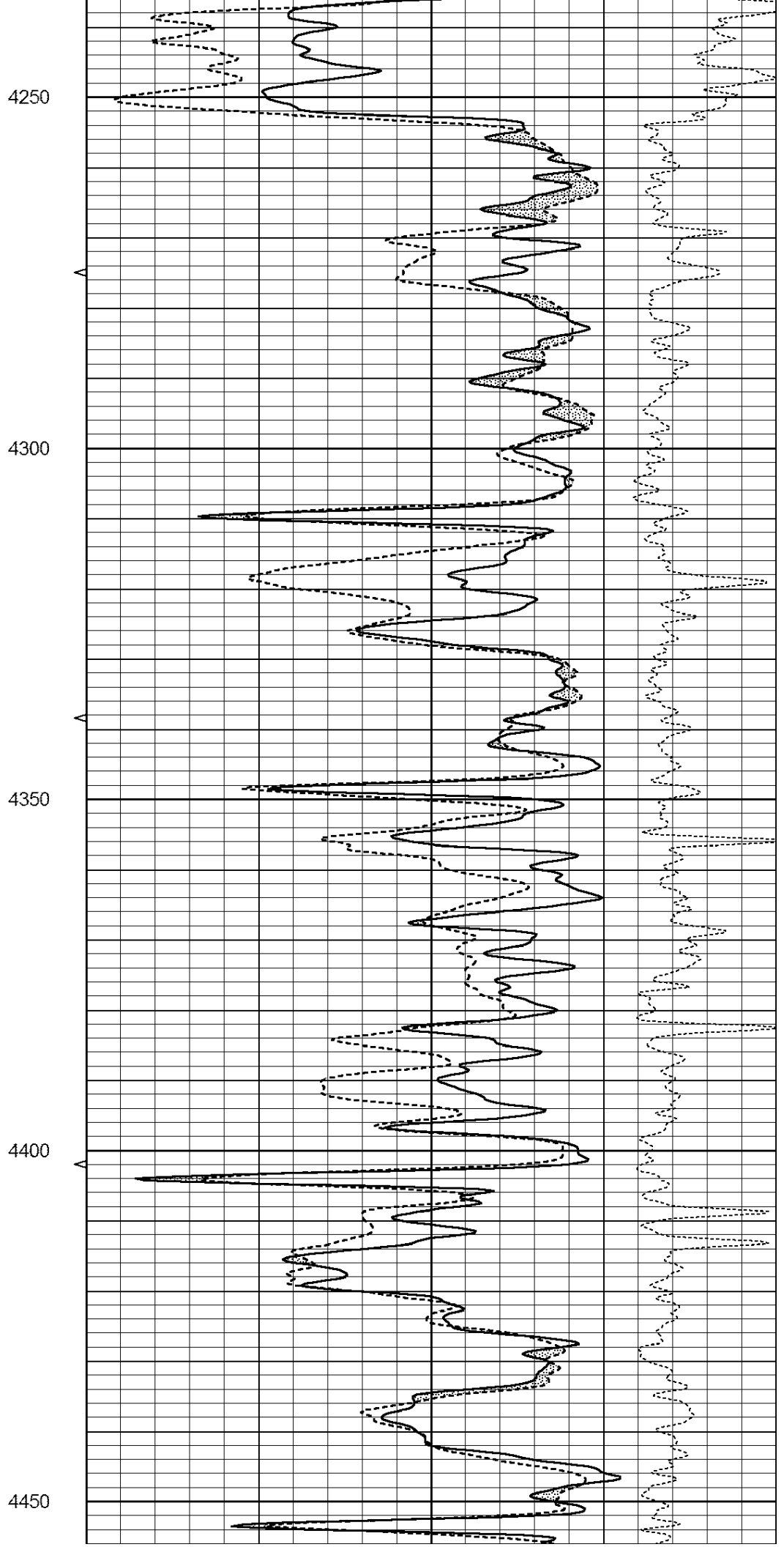
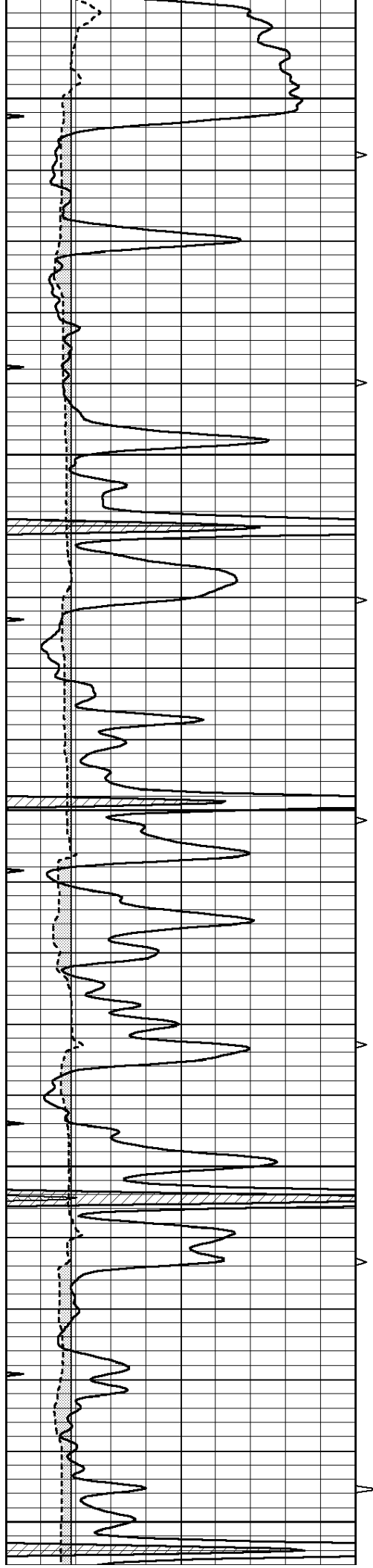
4050

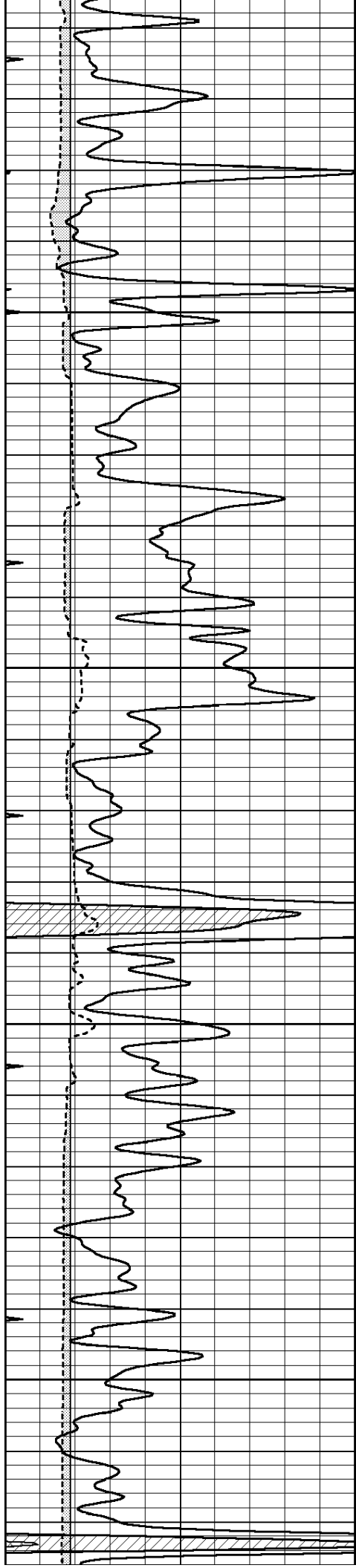
4100

4150

4200





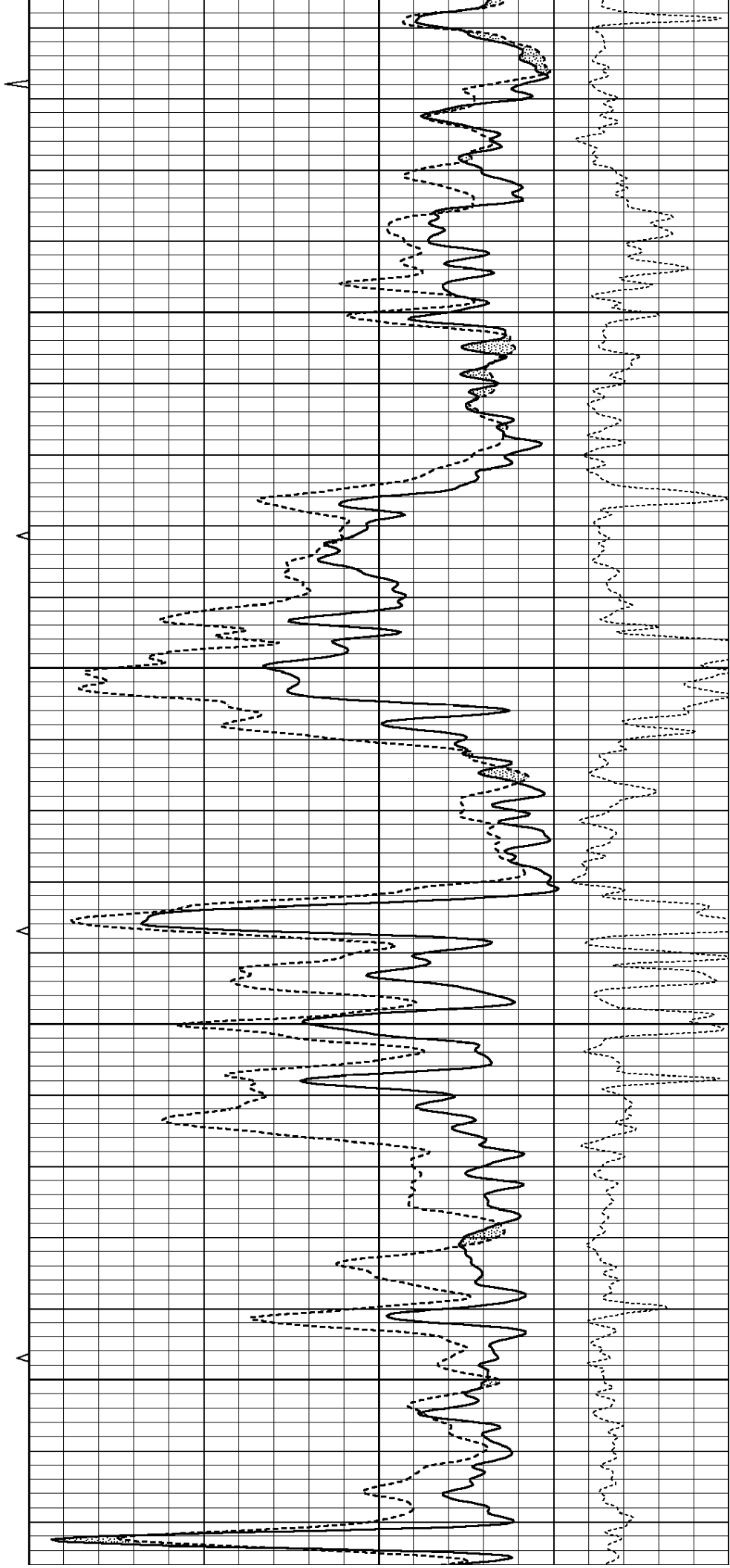


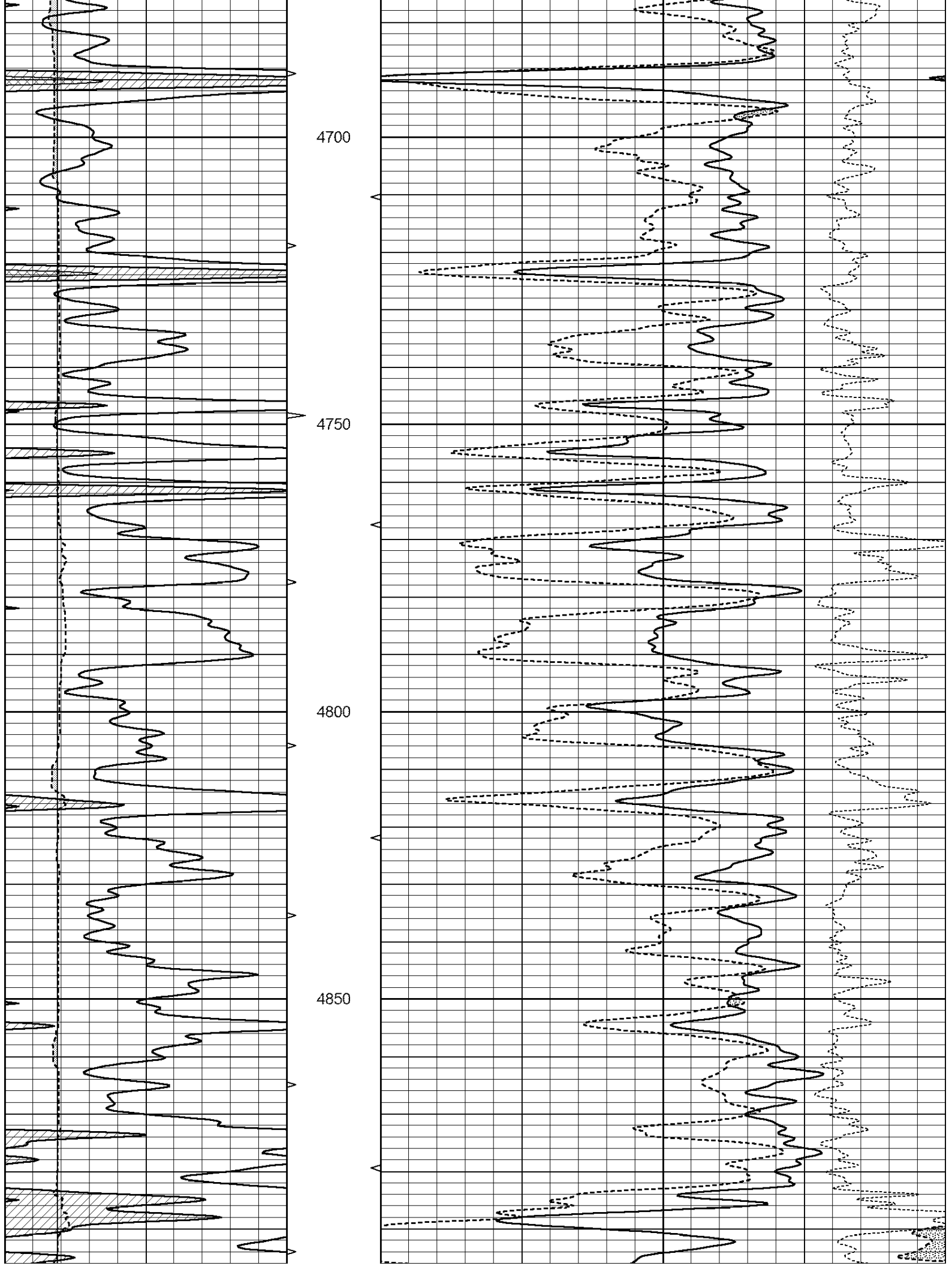
4500

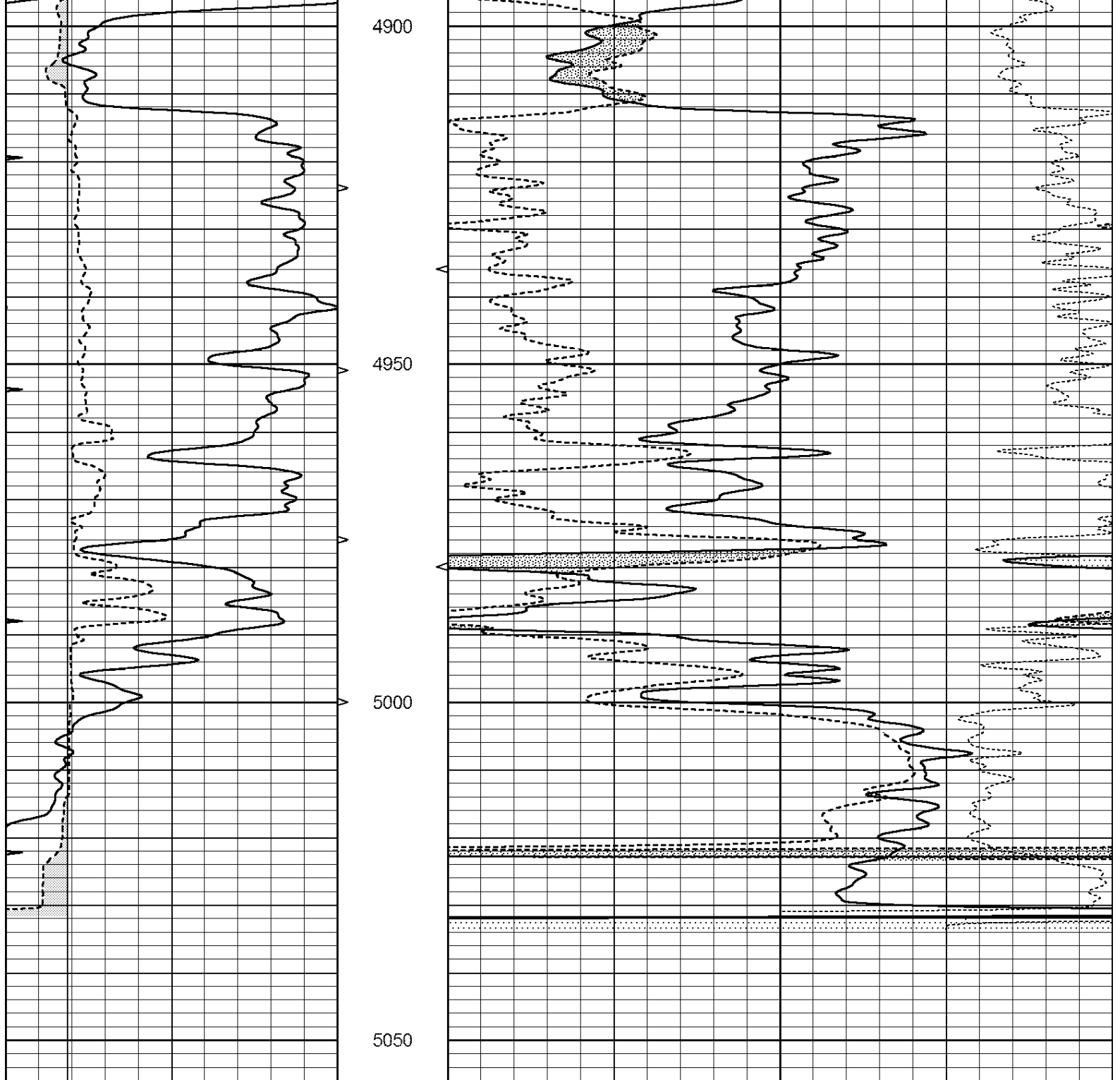
4550

4600

4650







0	GAMMA RAY (GAPI)	150	ABHV	30	COMPENSATED DENSITY (pu)	-10
6	CALIPER (in)	16	10 (ft3)	0 30	COMPENSATED NEUTRON (pu)	-10
0	MINMK	20	TBHV		-0.25 CORRECTION (g/cc)	0.25
			0 (ft3)	10		