



MICRO LOG

Company DEUTSCH OIL COMPANY
 Well JORNS #2-4
 Field BAUMAN
 County PRATT
 State KANSAS

Company DEUTSCH OIL COMPANY
 Well JORNS #2-4
 Field BAUMAN
 County PRATT State KANSAS

Location: API #: 15-151-22459-00-00
 1650' FSL & 2310' FEL
 SEC 4 TWP 26S RGE 11W
 Permanent Datum GROUND LEVEL Elevation 1851
 Log Measured From KELLY BUSHING 7' A.G.L
 Drilling Measured From KELLY BUSHING
 Other Services CDL/CNL/PE DIL
 Elevation K.B. 1858
 D.F. 1856
 G.L. 1851

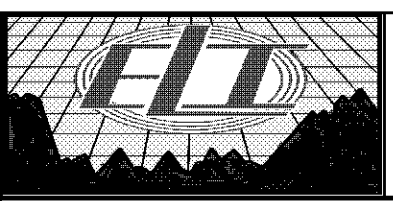
Date	3/22/17
Run Number	TWO
Depth Driller	4160
Depth Logger	4165
Bottom Logged Interval	4163
Top Log Interval	3200
Casing Driller	8 5/8" @ 304
Casing Logger	304
Bit Size	7 7/8
Type Fluid in Hole	CHEMICAL MUD
Density / Viscosity	9.2/62
PH / Fluid Loss	12.5/8.8
Source of Sample	FLOWLINE
Rm @ Meas. Temp	.50 @ 82F
Rmt @ Meas. Temp	.37 @ 82F
Rmc @ Meas. Temp	.60 @ 82F
Source of Rmf / Rmc	MEASUREMENT
Rm @ BHT	.35 @ 117F
Time Circulation Stopped	2 HOURS
Time Logger on Bottom	12:00 P.M.
Maximum Recorded Temperature	117F
Equipment Number	3802
Location	HAYS, KANSAS
Recorded By	JASON CAPPELLUCCI
Witnessed By	AARON YOUNG

<<< Fold Here >>>

All interpretations are opinions based on inferences from electrical or other measurements and we cannot and do not guarantee the accuracy or correctness of any interpretation, and we shall not, except in the case of gross or willful negligence on our part, be liable or responsible for any loss, costs, damages, or expenses incurred or sustained by anyone resulting from any interpretation made by any of our officers, agents or employees. These interpretations are also subject to our general terms and conditions set out in our current Price Schedule.

Comments

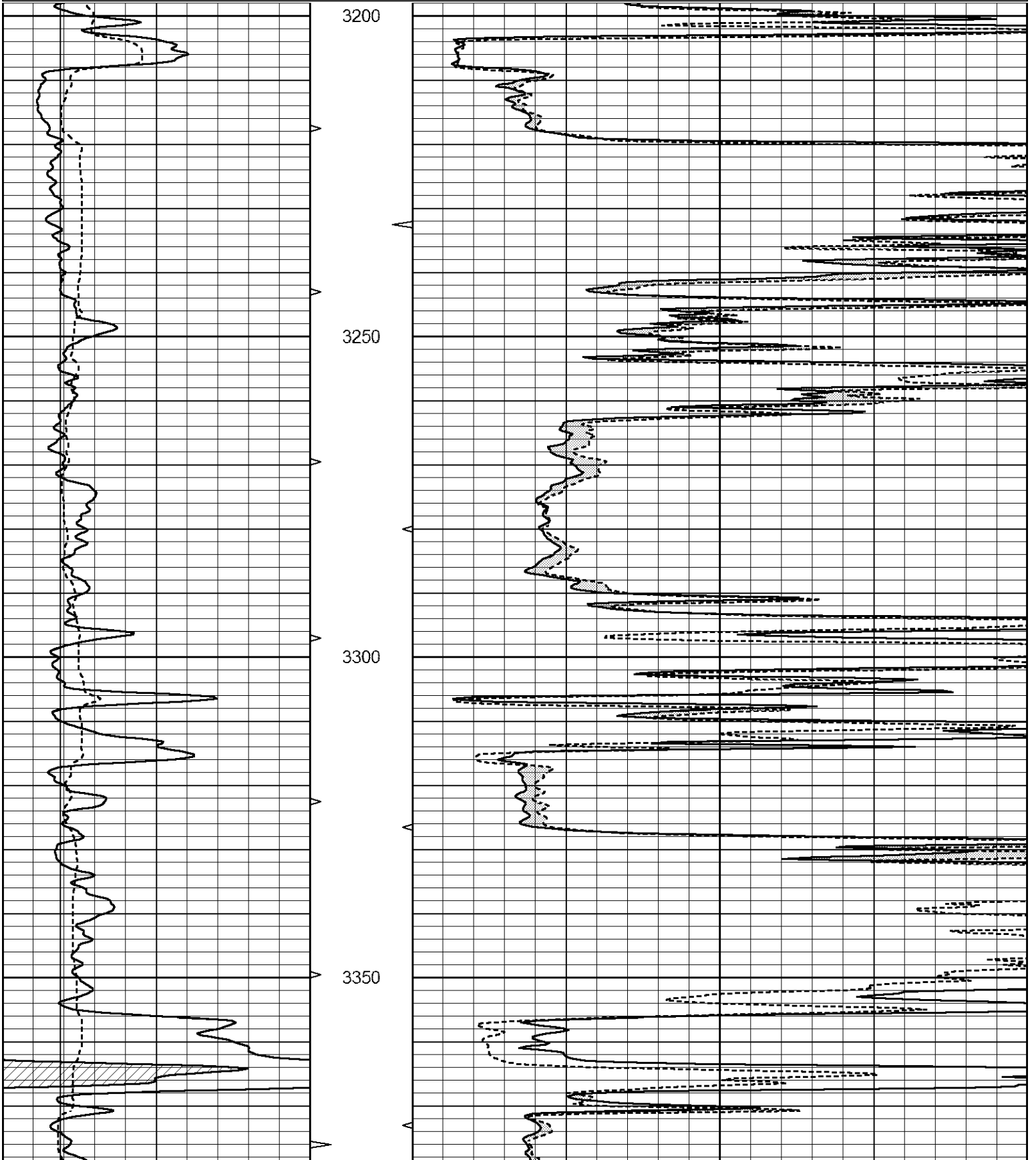
THANK YOU FOR USING ELI WIRELINE SERVICES, HAYS, KS. (785) 628-6395
 DIRECTIONS
 TURON, KS. - 4 WEST ON 110TH RD. TO 120TH RD. - 1/2 NORTH - WEST INTO

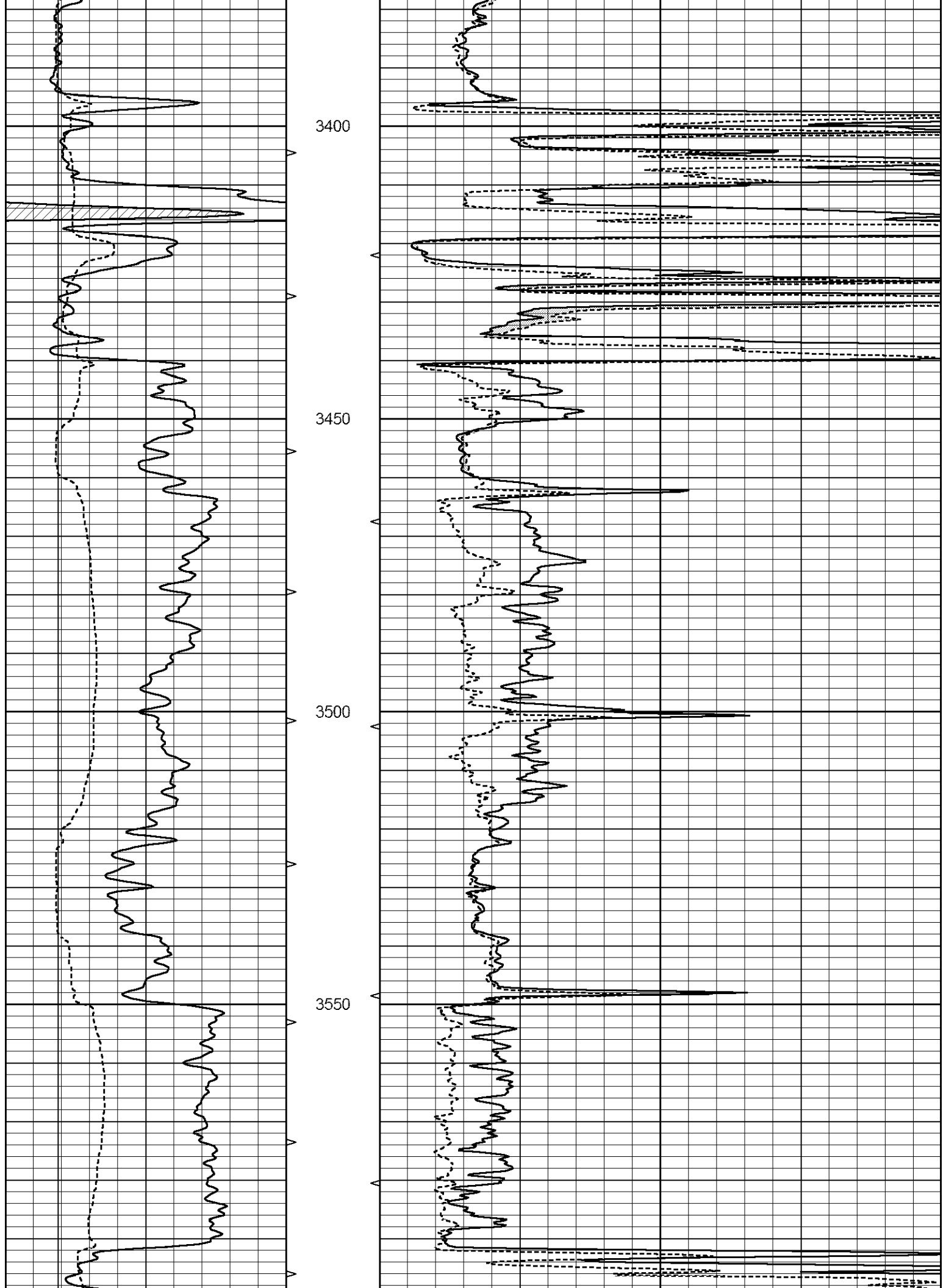


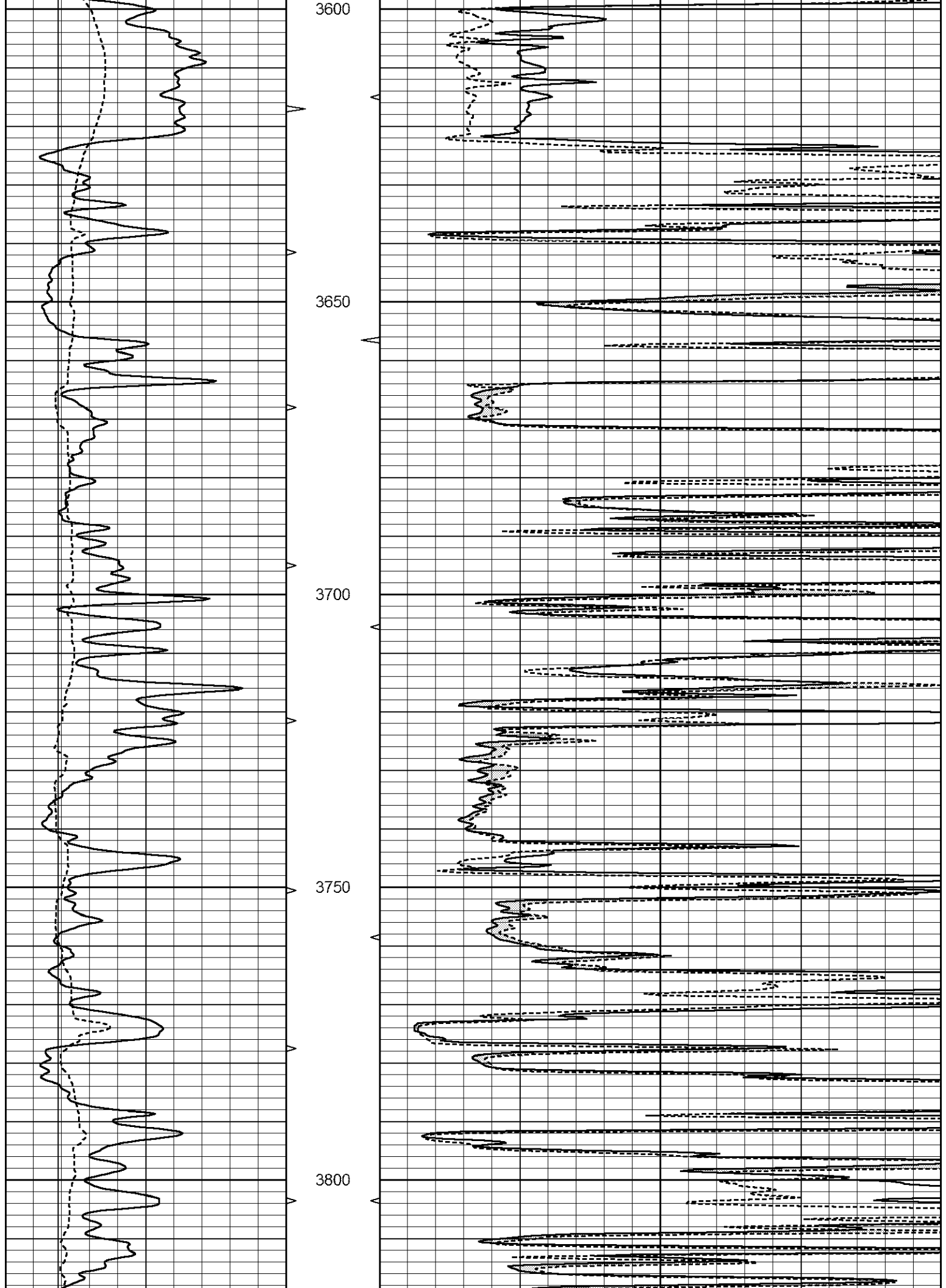
MAIN SECTION

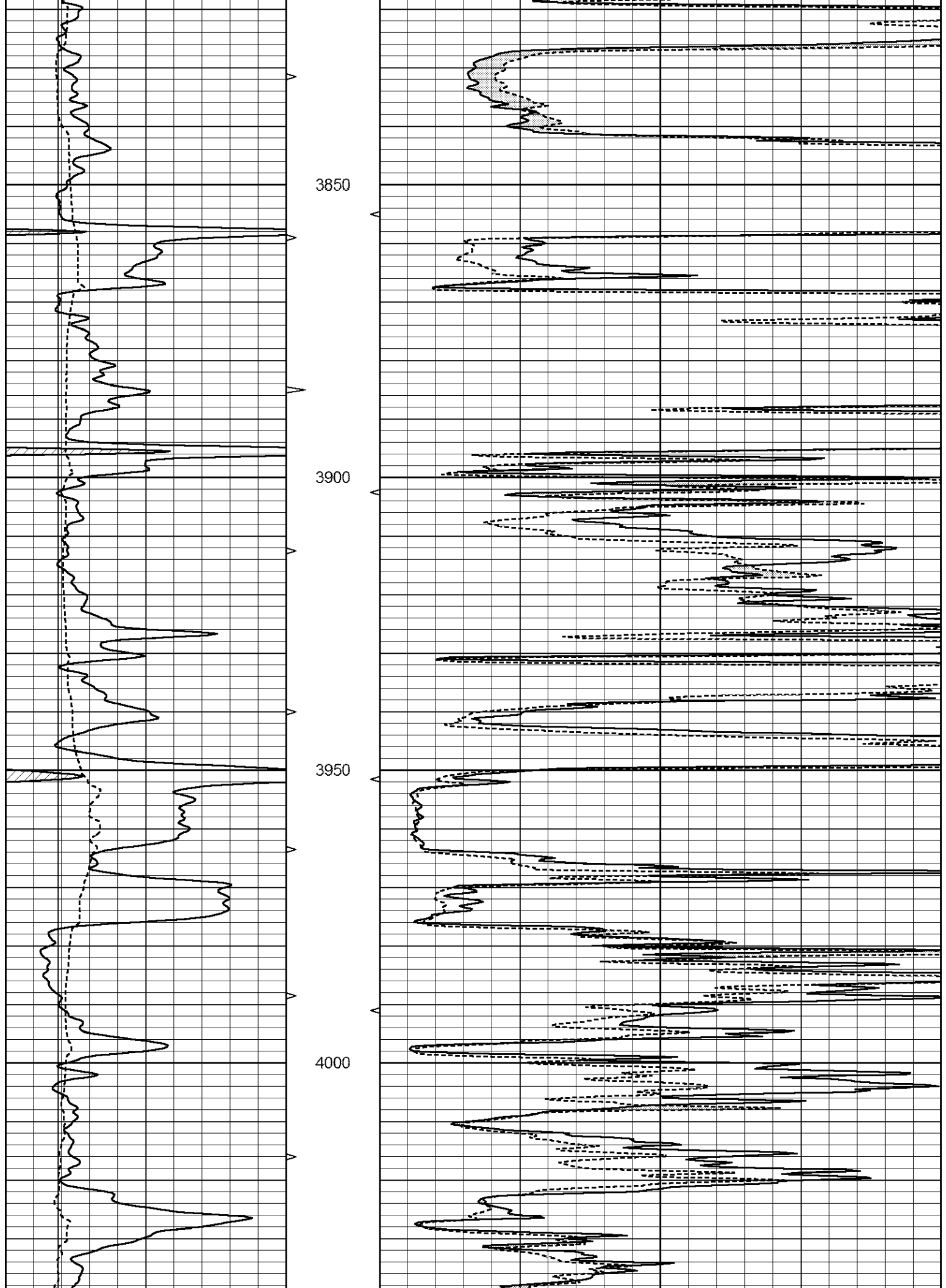
Database File 1125pe8.db
 Dataset Pathname pass7.1
 Presentation Format _micro
 Dataset Creation Wed Mar 22 14:24:37 2017
 Charted by Depth in Feet scaled 1:240

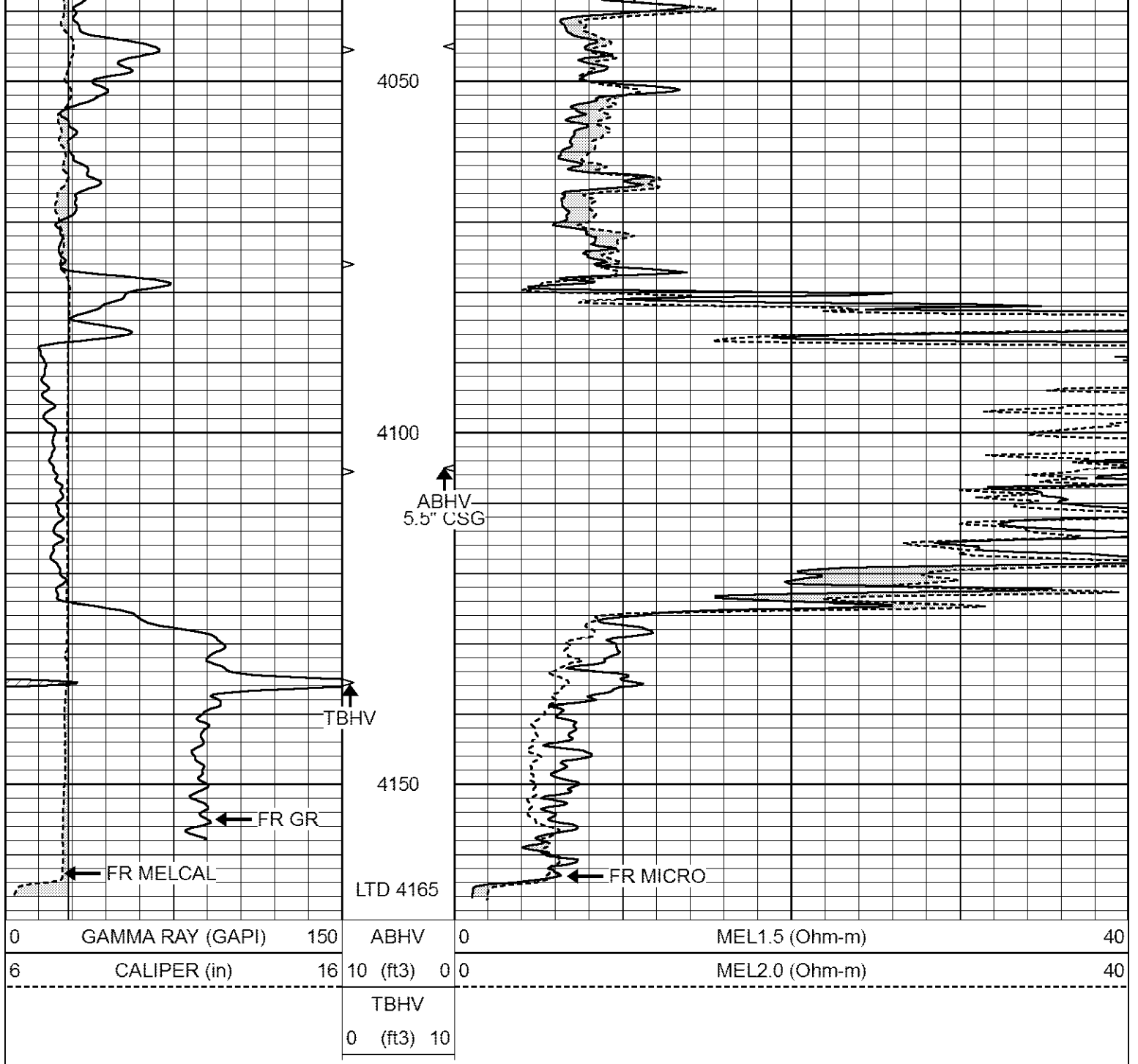
0	GAMMA RAY (GAPI)	150	ABHV	0	MEL1.5 (Ohm-m)	40
6	CALIPER (in)	16	10 (ft3)	0	MEL2.0 (Ohm-m)	40
			TBHV			
			0 (ft3)	10		







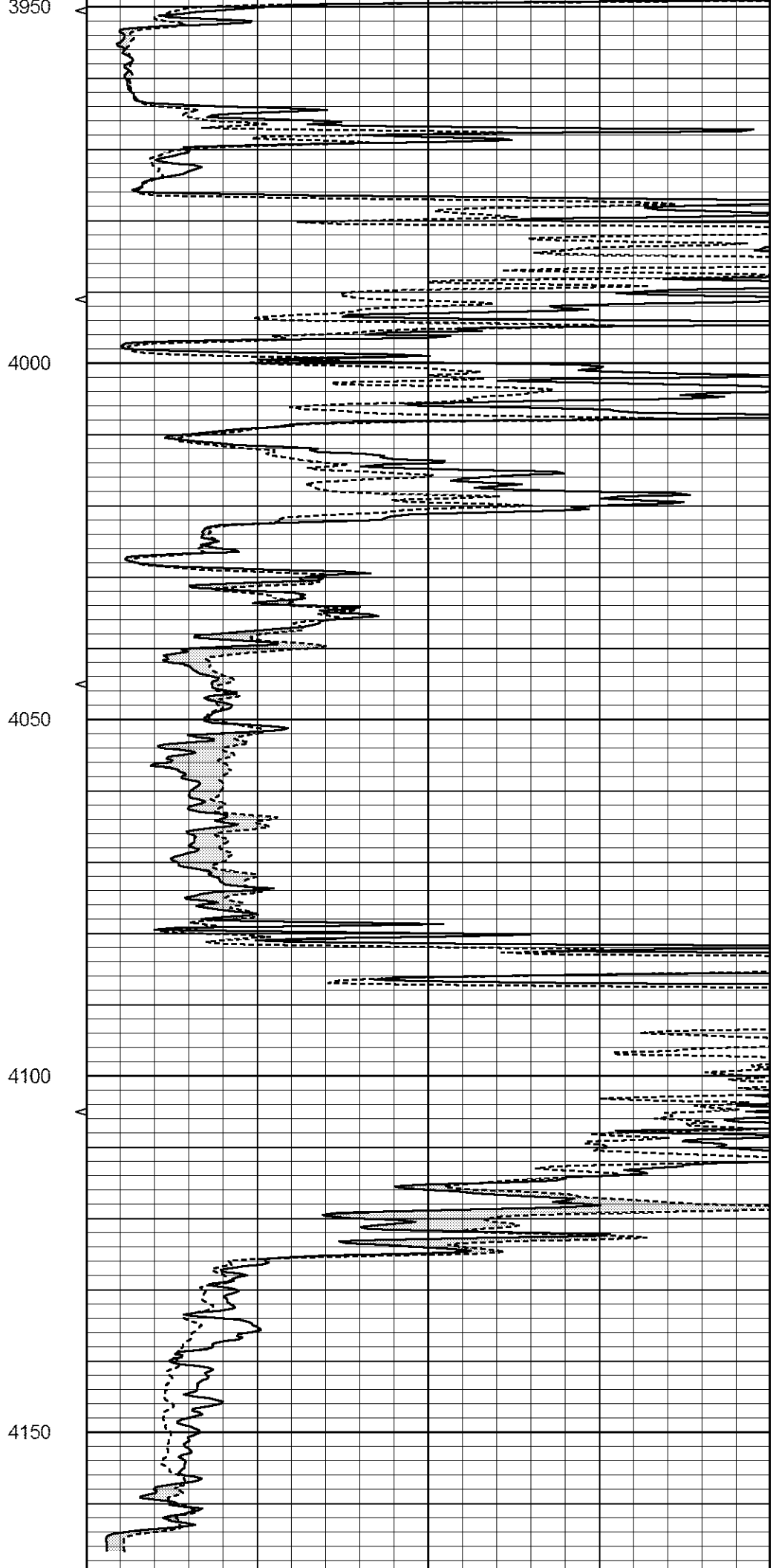
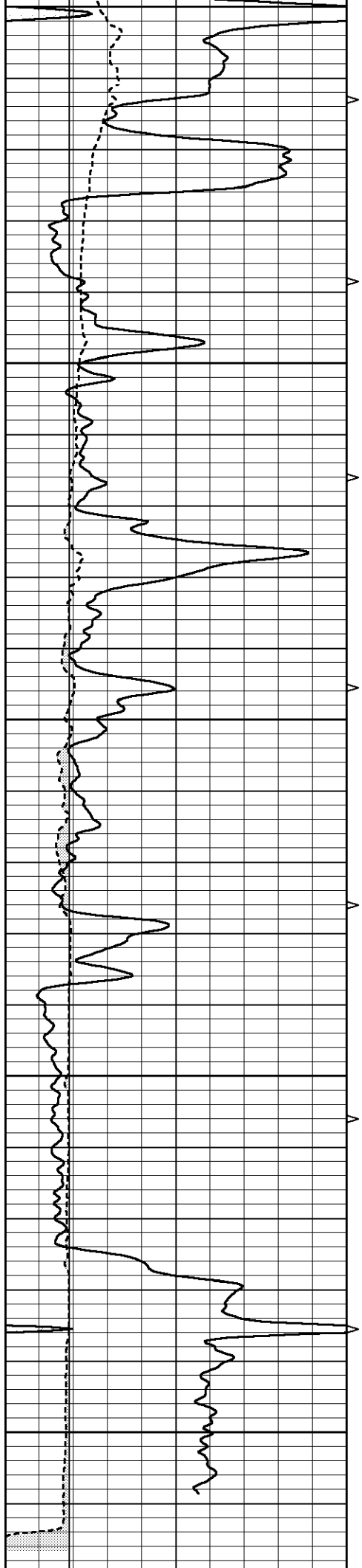




REPEAT SECTION

Database File 1125pe8.db
 Dataset Pathname pass6.1
 Presentation Format _micro
 Dataset Creation Wed Mar 22 14:12:20 2017
 Charted by Depth in Feet scaled 1:240

0	GAMMA RAY (GAPI)	150	ABHV	0	MEL1.5 (Ohm-m)	40
6	CALIPER (in)	16	10 (ft3) 0 0	0	MEL2.0 (Ohm-m)	40
			TBHV			
			0 (ft3) 10			



0	GAMMA RAY (GAPI)	150	ABHV	0	MEL1.5 (Ohm-m)	40
6	CALIPER (in)	16	10 (ft3) 0	0	MEL2.0 (Ohm-m)	40
			TBHV			
			0 (ft3) 10			

Calibration Report

Database File 1125pe8.db
 Dataset Pathname pass6.1
 Dataset Creation Wed Mar 22 14:12:20 2017

MICRO_USR Calibration Report

Serial Number: 070911
 Tool Model: Probel
 Performed: Thu Dec 08 13:09:11 2016

Caliper Calibration: Gain=4.161 Offset=1.500

	Low Cal	High Cal
References	8.000	14.000
Readings	1.333	2.775

1.5" Calibration: Gain=37.000 Offset=0.000

	Low Cal	High Cal
References	0.000	20.000
Readings	0.004	0.843

2" Calibration: Gain=35.000 Offset=0.650

	Low Cal	High Cal
References	0.000	20.000
Readings	0.021	0.810

Microlog Calibration Report

Serial-Model: 070911-Probel
 Performed: Sat Apr 11 01:13:01 2015

	Readings			References			Results	
	Zero	Cal		Zero	Cal		m	b
Normal	0.0002	0.4836	V	0.0000	10.0000	Ohm-m	20.6908	-0.0051
Inverse	0.0018	0.6297	V	0.0000	10.0000	Ohm-m	15.9263	-0.0282
Caliper	0.0000	1.0000	V	0.0000	1.0000	in	1.0000	0.0000

Gamma Ray Calibration Report

Serial Number: 7
 Tool Model: Probe1
 Performed: Wed Jun 29 11:10:58 2016

Calibrator Value: 1.0 GAPI

Background Reading: 0.0 cps
 Calibrator Reading: 1.0 cps

Sensitivity: 0.4300 GAPI/cps