



MIDWEST SURVEYS
 LOGGING - PERFORATING - CONSULTING SERVICES
 P.O. Box 68, Osawatomie, KS 66064
 913 / 755 - 2128

GAMMA RAY / NEUTRON / CCL

File No. Company McGown Drilling, Inc.
 Well Randall No. K9-11

Field Mound City
 County Linn State Kansas

Location 1485' FNL & 1815' FWL
 NE-NW-SE-NW

Sec. 11 Twp. 22s Rge. 23e
 Permanent Datum GL Elevation 874'
 Log Measured From GL
 Drilling Measured From GL

Other Services Perforate
 Elevation KB NA
 DF NA
 GL 874'

Date 07-01-2015

Run Number One
 Depth Driller 542.0
 Depth Logger 534.7

Bottom Logged Interval 533.7
 Top Log Interval 20.0
 Fluid Level Full

Type Fluid Water
 Density / Viscosity NA
 Salinity - PPM Cl NA
 Max Recorded Temp NA
 Estimated Cement Top 0.0
 Equipment No. 102 Location Osawatimie
 Recorded By Gary Windsch
 Witnessed By Chris McGown

BORE-HOLE RECORD
 RUN No. BIT FROM TO SIZE WGT. FROM TO
 One 11.00" 0.0 24.0 8.625" 24.0# 0.0 24.0
 Two 6.75" 24.0 542.0 4.50" 10.5# 0.0 534.7

CASING RECORD
 RUN No. BIT FROM TO SIZE WGT. FROM TO
 One 11.00" 0.0 24.0 8.625" 24.0# 0.0 24.0
 Two 6.75" 24.0 542.0 4.50" 10.5# 0.0 534.7

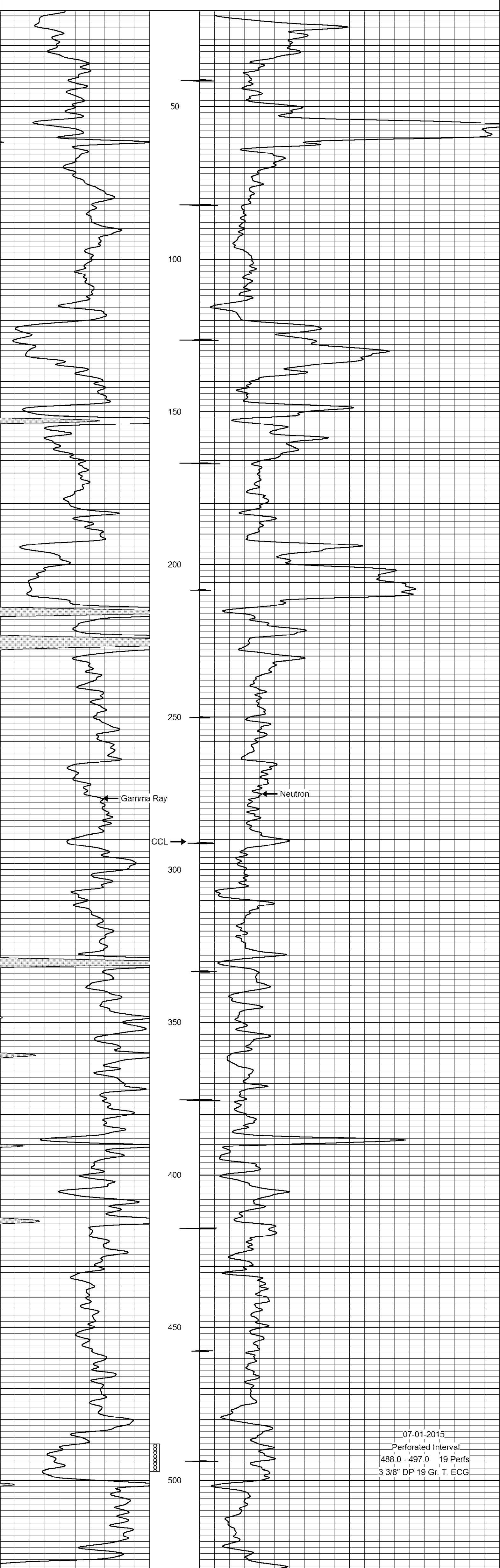
<<< Fold Here >>>

All interpretations are opinions based on inferences from electrical or other measurements and we cannot and do not guarantee the accuracy or correctness of any interpretation, and we shall not, except in the case of gross or willful negligence on our part, be liable or responsible for any loss, costs, damages, or expenses incurred or sustained by anyone resulting from any interpretation made by any of our officers, agents or employees. These interpretations are also subject to our general terms and conditions set out in our current Price Schedule.

Comments

Drilling Contractor :
 McGown Drilling, Inc.

Database File: randall 9-11k.db
 Dataset Pathname: pass1
 Presentation Format: gr-n-ccl
 Dataset Creation: Wed Jul 01 11:59:50 2015 by Log SCH 111116
 Charted by: Depth in Feet scaled 1:240



07-01-2015
 Perforated Interval
 488.0 - 497.0 19 Perfs
 3 3/8" DP 19 Gr. T. ECG

