



**COMPLETION
& PRODUCTION
SERVICES CO.**

**MICRO
LOG**

Company BLACK DIAMOND OIL INC.
Well GLENNEMEIER A #3
Field
County NORTON
State KANSAS

Company BLACK DIAMOND OIL INC.
Well GLENNEMEIER A #3
Field
County NORTON State KANSAS

Location: API # : 15-137-20730-00-00
105' FSL & 905' FEL
SEC 21 TWP 5S RGE 21W
Permanent Datum GROUND LEVEL Elevation 2211
Log Measured From KELLY BUSHING 5' A.G.L.
Drilling Measured From KELLY BUSHING
Other Services CDL/CNL DIL
Elevation K.B. 2216
D.F. 2214
G.L. 2216

Date	5/23/15		
Run Number	TWO		
Depth Driller	3654		
Depth Logger	3655		
Bottom Logged Interval	3653		
Top Log Interval	3000		
Casing Driller	8 5/8" @ 217'		
Casing Logger	218'		
Bit Size	7 7/8"		
Type Fluid in Hole	CHEMICAL MUD	CHLORIDES 750 PPM	
Density / Viscosity	9.4/54		
pH / Fluid Loss	9.5/8.0		
Source of Sample	FLOWLINE		
Rm @ Meas. Temp	2.00 @ 70F		
Rmt @ Meas. Temp	1.50 @ 70F		
Rmc @ Meas. Temp	2.40 @ 70F		
Source of Rmf / Rmc	MEASUREMENT		
Rm @ BHT	1.25 @ 113F		
Time Circulation Stopped	5 HOURS		
Time Logger on Bottom			
Maximum Recorded Temperature	112F		
Equipment Number	4010		
Location	HAYS, KANSAS		
Recorded By	JASON CAPPELLUCCI	BLAKE WAGGONER	
Witnessed By	JEFF LAWLER		

<<< Fold Here >>>

All interpretations are opinions based on inferences from electrical or other measurements and we cannot and do not guarantee the accuracy or correctness of any interpretation, and we shall not, except in the case of gross or willful negligence on our part, be liable or responsible for any loss, costs, damages, or expenses incurred or sustained by anyone resulting from any interpretation made by any of our officers, agents or employees. These interpretations are also subject to our general terms and conditions set out in our current Price Schedule.

Comments

THANK YOU FOR USING NABORS, HAYS, KS. (785) 628-6395
DIRECTIONS:

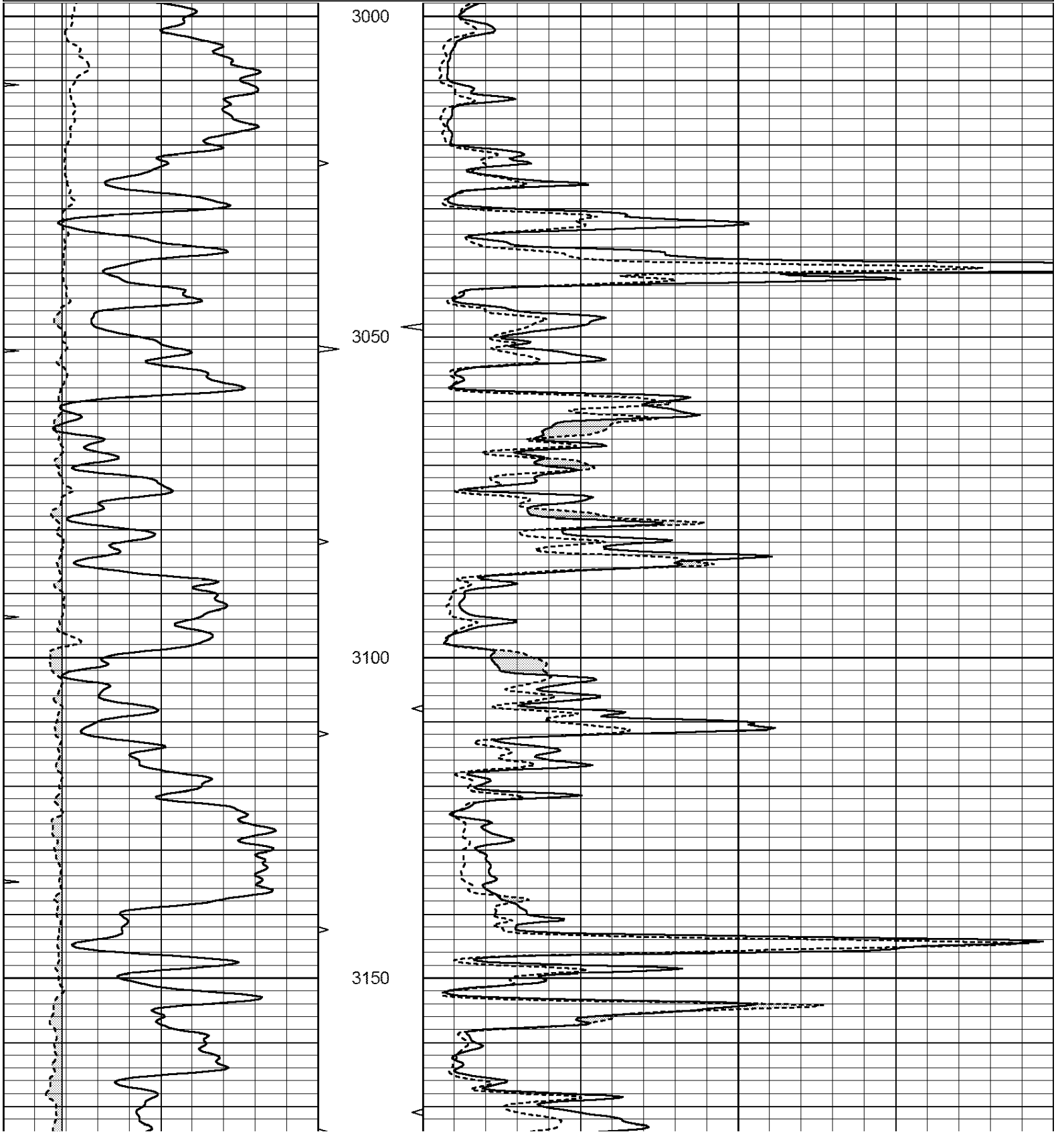
FROM LOGAN 5 MILES WEST TO ROAD E12, 1 MILE SOUTH, 1 MILE WEST, 2 MILES SOUTH, WEST INTO

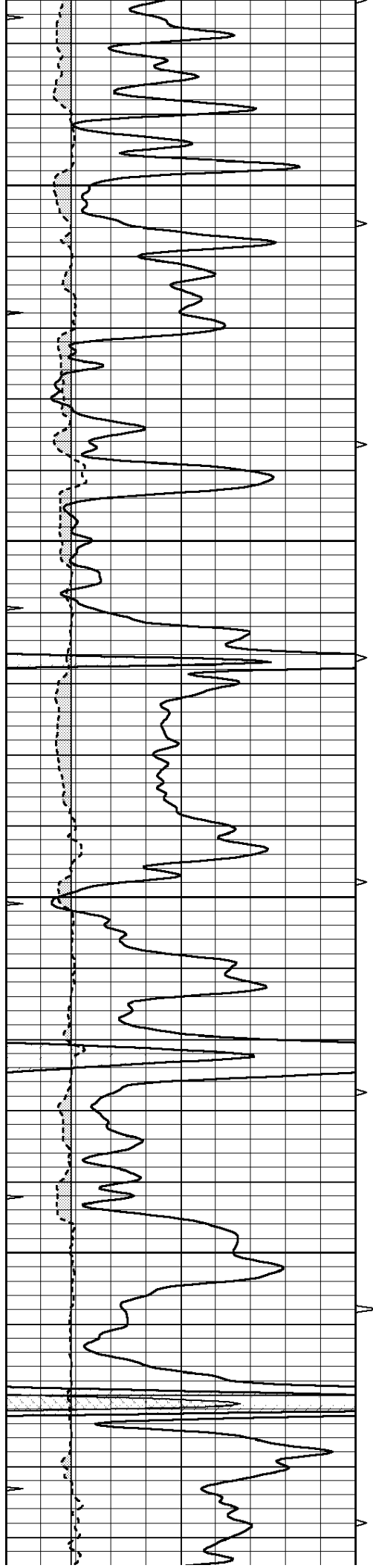


MAIN SECTION

Database File: 30506ddn.db
 Dataset Pathname: pass6.1
 Presentation Format: _micro
 Dataset Creation: Sun May 24 02:24:00 2015 by Calc Open-Cased 090629
 Charted by: Depth in Feet scaled 1:240

0	GAMMA RAY (GAPI)	150	ABHV	0	MEL1.5 (Ohm-m)	40
6	CALIPER (in)	16	10 (ft3)	0	MEL2.0 (Ohm-m)	40
0	MINMK	20	TBHV			
			0 (ft3)	10		



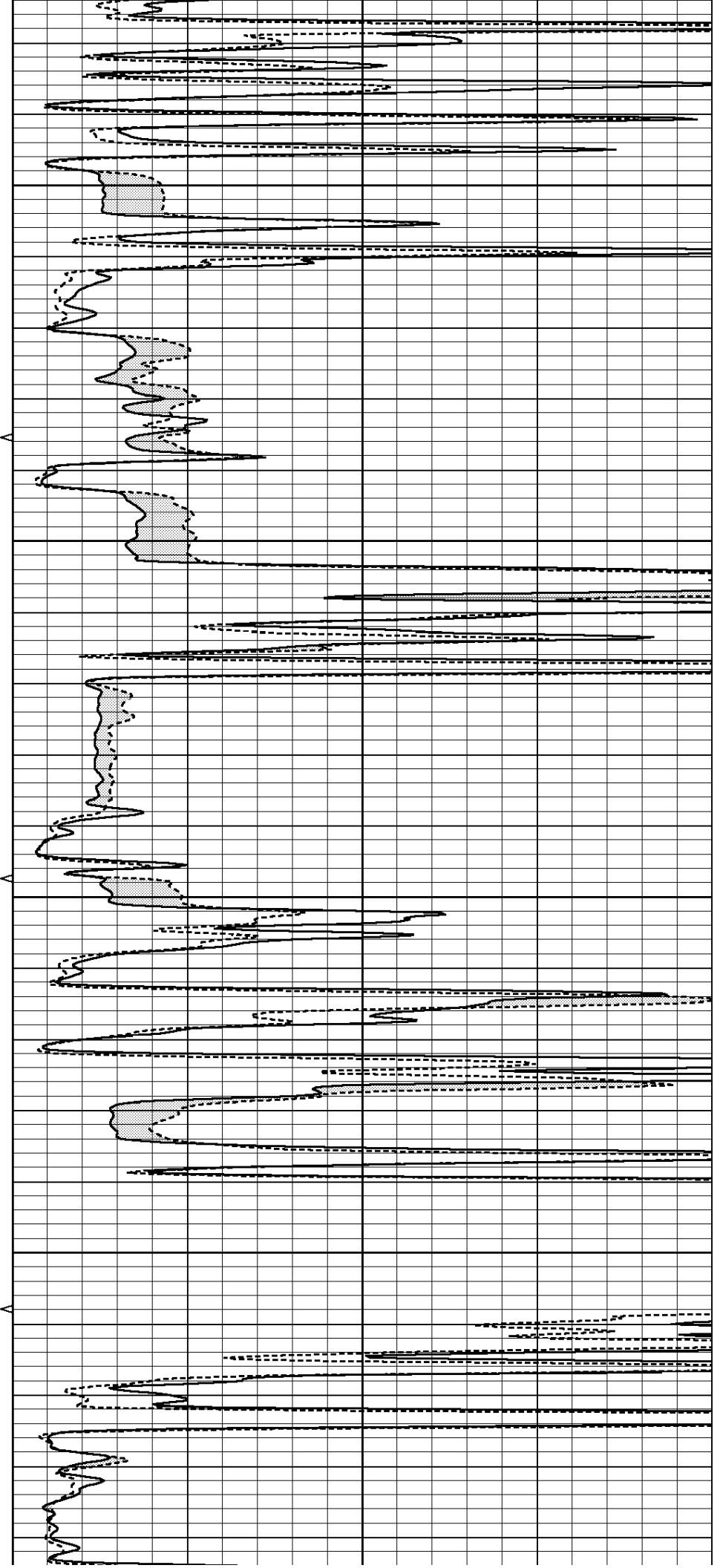


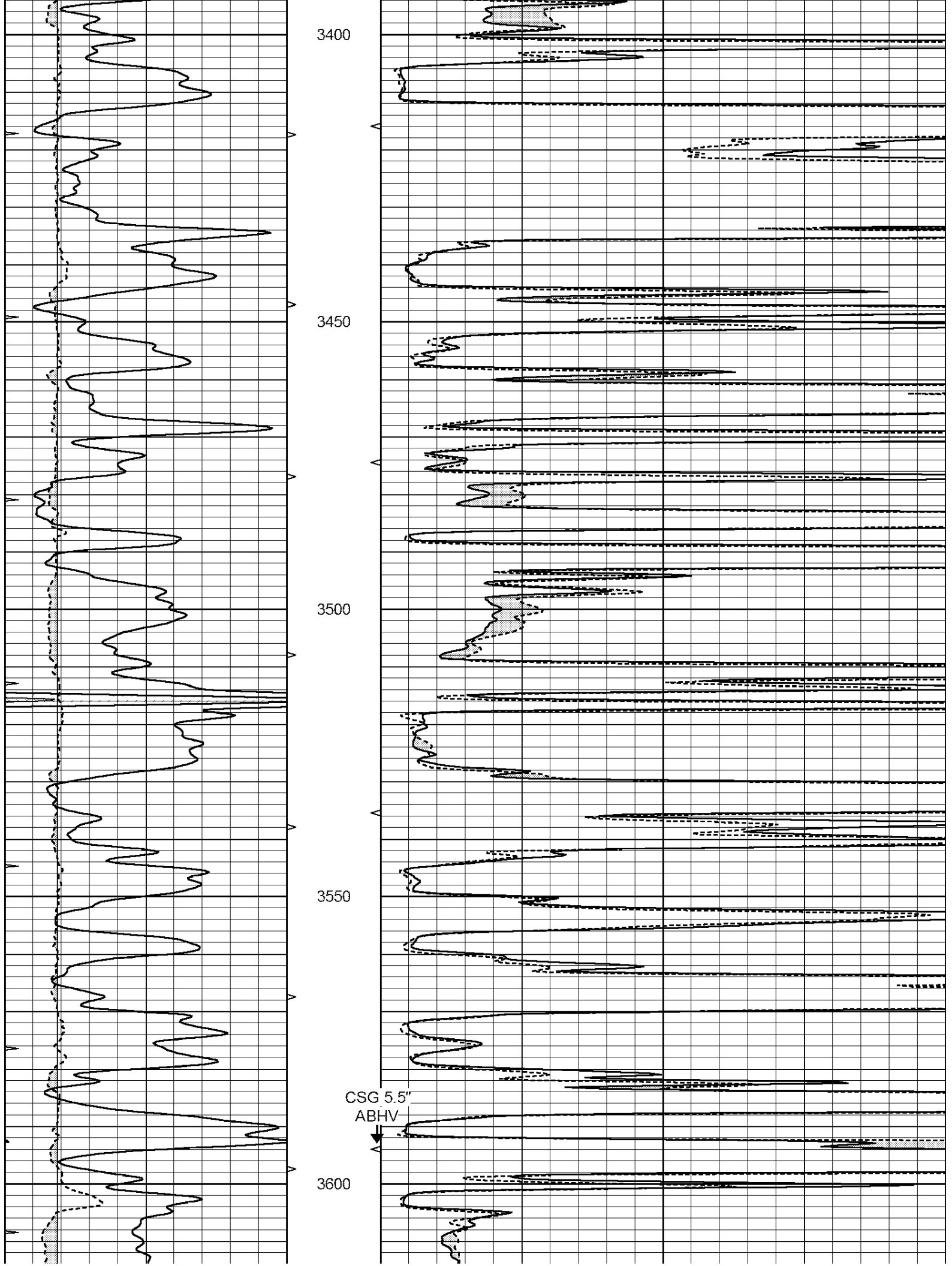
3200

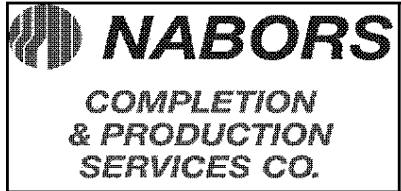
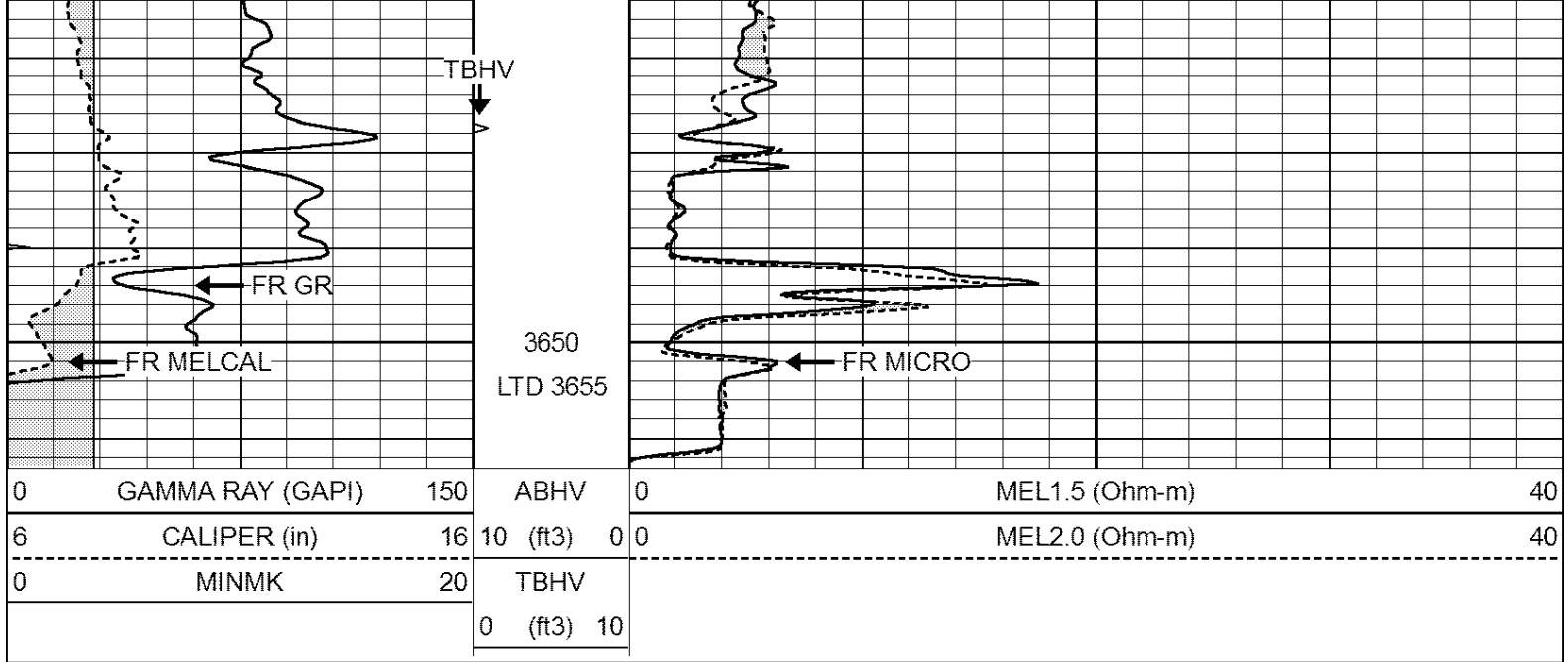
3250

3300

3350



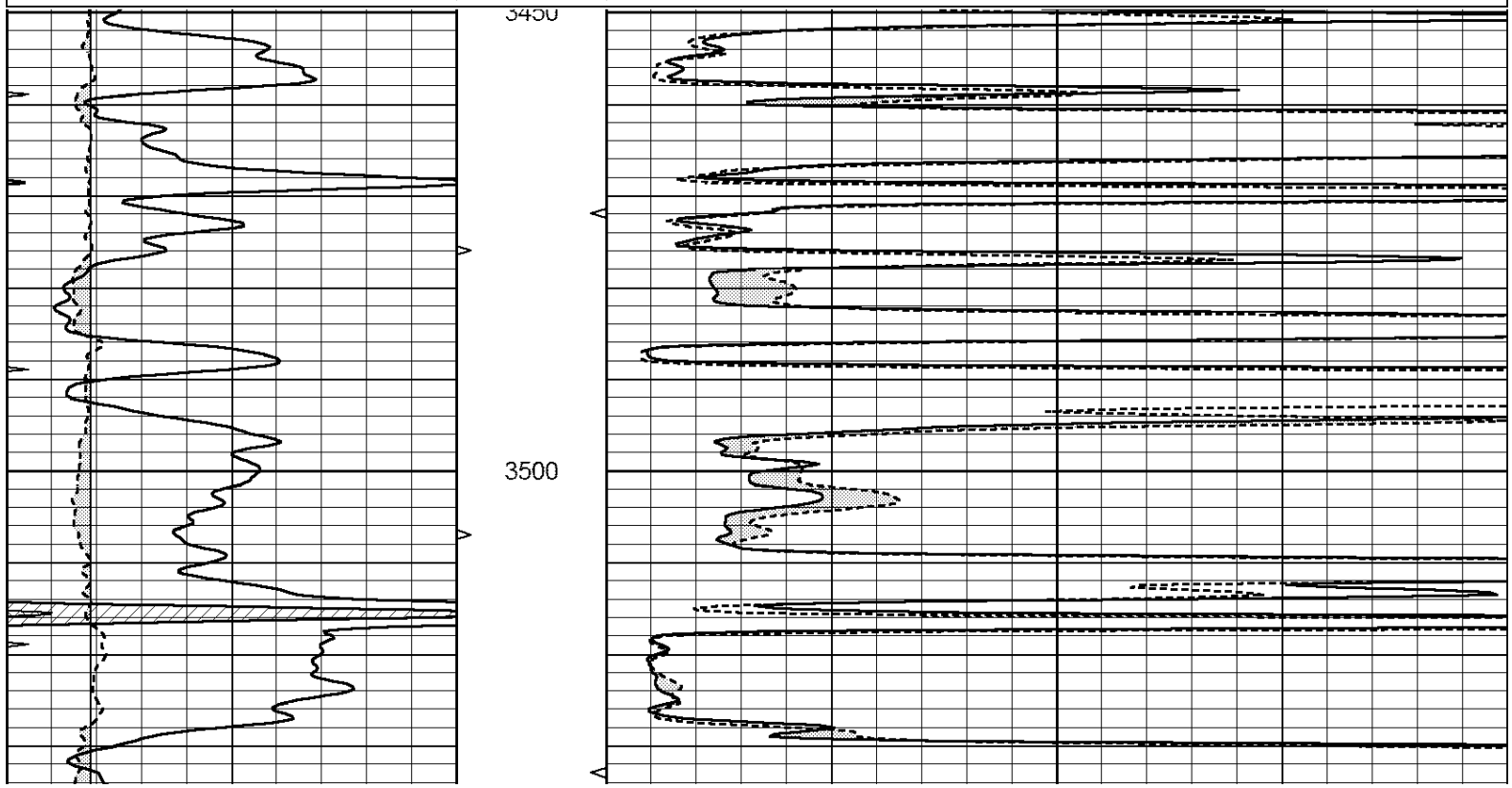




REPEAT SECTION

Database File: 30506ddn.db
 Dataset Pathname: pass5.5
 Presentation Format: _micro
 Dataset Creation: Sun May 24 02:07:44 2015 by Calc Open-Cased 090629
 Charted by: Depth in Feet scaled 1:240

0	GAMMA RAY (GAPI)	150	ABHV	0	MEL1.5 (Ohm-m)	40
6	CALIPER (in)	16	10 (ft3)	0	MEL2.0 (Ohm-m)	40
0	MINMK	20	TBHV			
			0 (ft3)	10		



References	Low Cal	High Cal
Readings	0.000	20.000
	0.004	0.228

2" Calibration:	Gain=150.553	Offset=-1.220
	Low Cal	High Cal
References	0.000	20.000
Readings	0.005	0.175

Gamma Ray Calibration Report

Serial Number:	GR6	
Tool Model:	OPEN	
Performed:	Sun May 10 18:59:16 2015	
Calibrator Value:	150.0	GAPI
Background Reading:	0.0	cps
Calibrator Reading:	276.0	cps
Sensitivity:	0.8000	GAPI/cps