



**MIDWEST SURVEYS**  
 LOGGING - PERFORATING - CONSULTING SERVICES  
 P.O. Box 68, Osawatomie, KS 66064  
 913 755 - 2128

**GAMMA RAY / NEUTRON / CCL**

File No.

Company **Richard T. Falkin**

Well **Harts Farm No.- 14**

Field **Helper**

County **Crawford** State **Kansas**

Location **1810' FSL & 160' FWL  
NW-SW-NW-NW**

Other Services **Perforate**

API # 15-037-22,335

Sec 4  
 Permanent Datum Twp 28S Rge 22E Elevation 992'  
 Log Measured From GL  
 Drilling Measured From GL

Elevation  
 KB NA  
 D.F. NA  
 G.L. 992'

Date 03-15-2017

Run Number One

Depth Driller 632.0

Depth Logger 620.8

Bottom Logged Interval 619.8

Top Log Interval 20.0

Fluid Level Full

Type Fluid **Water**  
 Density / Viscosity **NA**  
 Salinity - PPM Cl **NA**  
 Max Recorded Temp **NA**  
 Estimated Cement Top **0.0**  
 Equipment No. **104** Location **Osawatomie**  
 Recorded By **Steve Windisch**  
 Witnessed By **Richard Falkin**

BORE-HOLE RECORD			
NO.	BIT	FROM	TO
One	9.875"	0.0	23.5
Two	5.625"	23.5	632.0

CASING RECORD			
NO.	SIZE	WGT.	FROM
One	9.875"	17.0#	0.0
Two	5.625"	6.5#	0.0

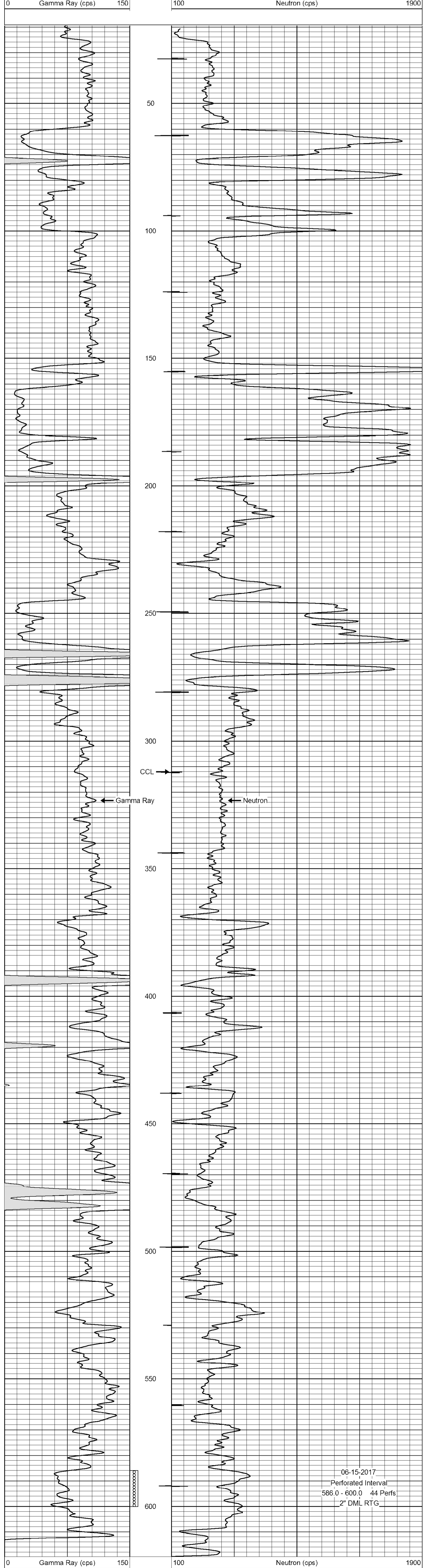
<<< Fold Here >>>

All interpretations are opinions based on inferences from electrical or other measurements and we cannot and do not guarantee the accuracy or correctness of any interpretation, and we shall not, except in the case of gross or willful negligence on our part, be liable or responsible for any loss, costs, damages, or expenses incurred or sustained by anyone resulting from any interpretation made by any of our officers, agents or employees. These interpretations are also subject to our general terms and conditions set out in our current Price Schedule.

Comments

Drilling Contractor :  
 Evans Energy & Development, Inc.

Database File: harts farm 14.db  
 Dataset Pathname: pass1  
 Presentation Format: gr-n-ccl  
 Dataset Creation: Thu Jun 15 10:41:26 2017 by Log SCH 111116  
 Charted by: Depth in Feet scaled 1:240



06-15-2017  
 Perforated Interval  
 586.0 - 600.0 44 Perfs  
 2" DML RTG