



DUAL COMP POROSITY LOG

Company **TRIPLE CROWN OPERATING, LLC**
 Well **MARHOFER NO. 1-27**
 Field **REINERT**
 County **NESS**
 State **KANSAS**

Company **TRIPLE CROWN OPERATING, LLC**
 Well **MARHOFER NO. 1-27**
 Field **REINERT**
 County **NESS** State **KANSAS**

Location: **2310' FNL & 1980' FEL**
 SEC 27 TWP 20S RGE 23W
 Permanent Datum **GROUND LEVEL Elevation 2212'**
 Log Measured From **KELLY BUSHING**
 Drilling Measured From **KELLY BUSHING**
 Other Services **DIL/MEL**
 Elevation **2219'**
 D.F. **N/A**
 G.L. **2212'**

Date	7/29/15
Run Number	ONE
Type Log	CNL/CDL/ML/DIL
Depth Driller	4480'
Depth Logger	4485'
Bottom Logged Interval	4456'
Top Logged Interval	2250'
Type Fluid In Hole	CHEMICAL
Salinity, PPM CL	3,000
Density	9.2
Level	FULL
Max. Rec. Temp. F	121
Operating Rig Time	3 HOURS
Equipment -- Location	108 Hays
Recorded By	J. HENRICKSON
Witnessed By	ROD ANDERSEN

Borehole Record		Casing Record					
Run No.	Bit	From	To	Size	Wgt.	From	To
ONE	12.25	00	251'	8.625	23#	00	251'
TWO	7.875	251'	TD				

<<< Fold Here >>>

All interpretations are opinions based on inferences from electrical or other measurements and Pioneer Wireline Services, LLC cannot and does not guarantee the accuracy or correctness of any interpretation, and Pioneer Wireline Services, LLC will not be liable or responsible for any loss, costs, damages, or expenses incurred or sustained by anyone resulting from any interpretation made by any of our officers, agents or employees.

Comments

N/A DENOTES NOT AVAILABLE OR NON-APPLICABLE.
 NESS CITY KANSAS
 SOUTH TO 20 RD, 3 1/2 EAST, WEST INTO RIGHT AFTER BRIDGE

Log Measured From: **KELLY BUSHING** 7 Ft. Above Permanent Datum

THANK YOU FOR USING PIONEER ENERGY SERVICES
www.pioneerenergy.com 785-625-3858

Your Pioneer Energy Services Crew

Engineer: **J. HENRICKSON**
 Operator: **J. LONG**
 Operator:
 Operator:

This Log Record Was Witnessed By

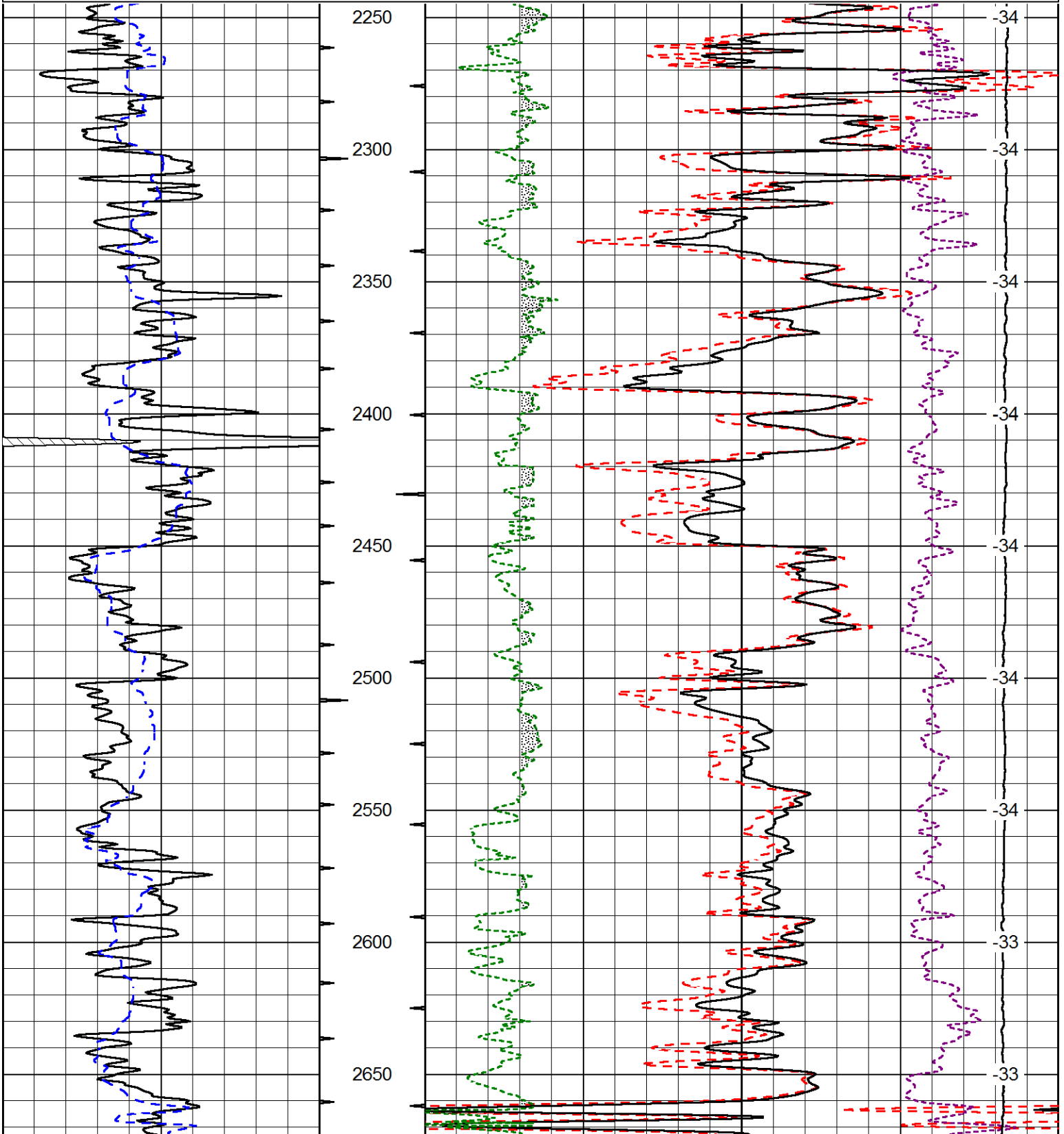
Primary Witness: **ROD ANDERSEN**
 Secondary Witness:
 Secondary Witness:
 Secondary Witness:

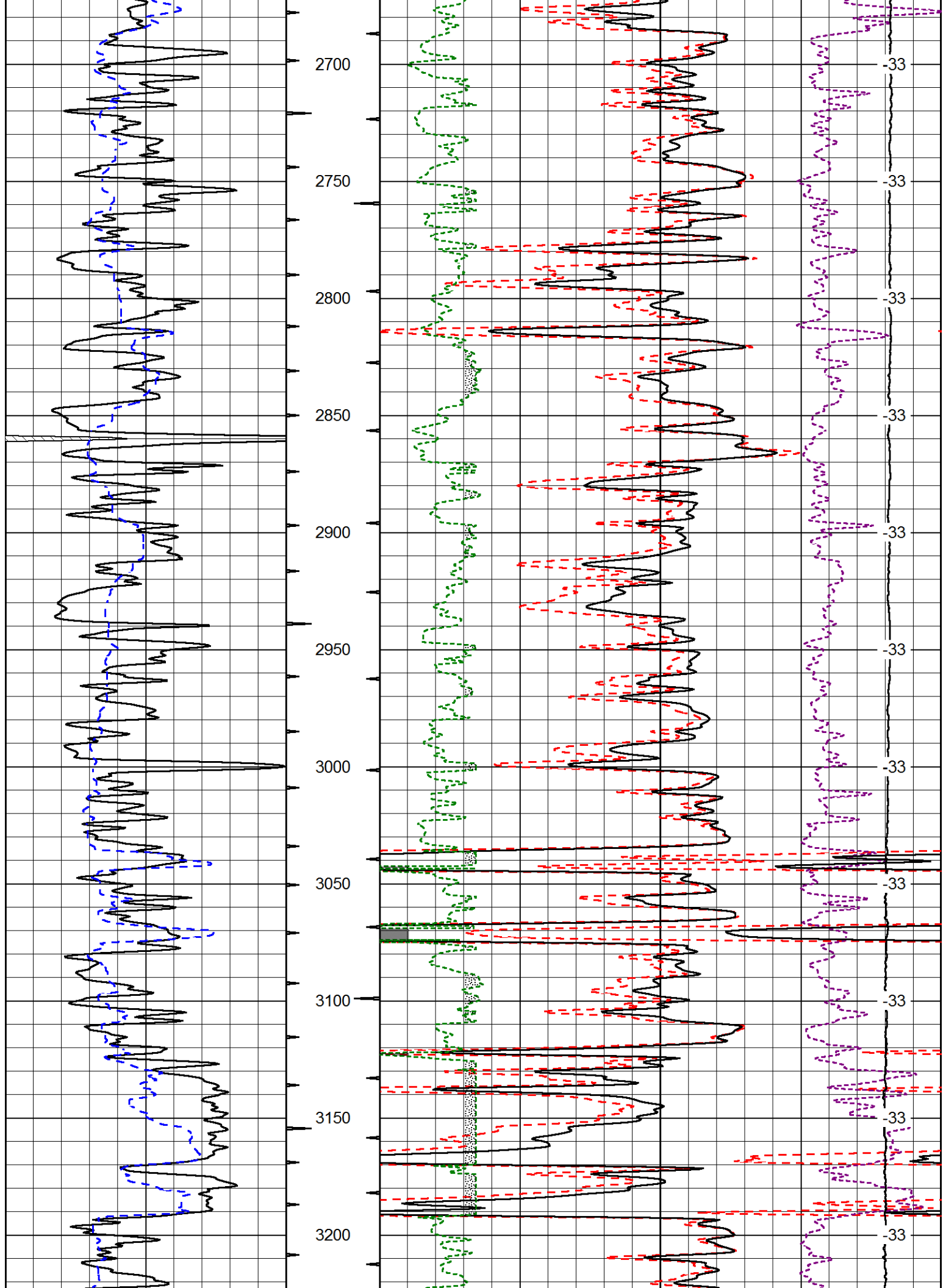
Database File triple_crown_marhofer_1_27hd.db
 Dataset Pathname DIL/tripfinal
 Presentation Format cdl
 Dataset Creation Wed Jul 29 10:13:22 2015
 Charted by Depth in Feet scaled 1:600

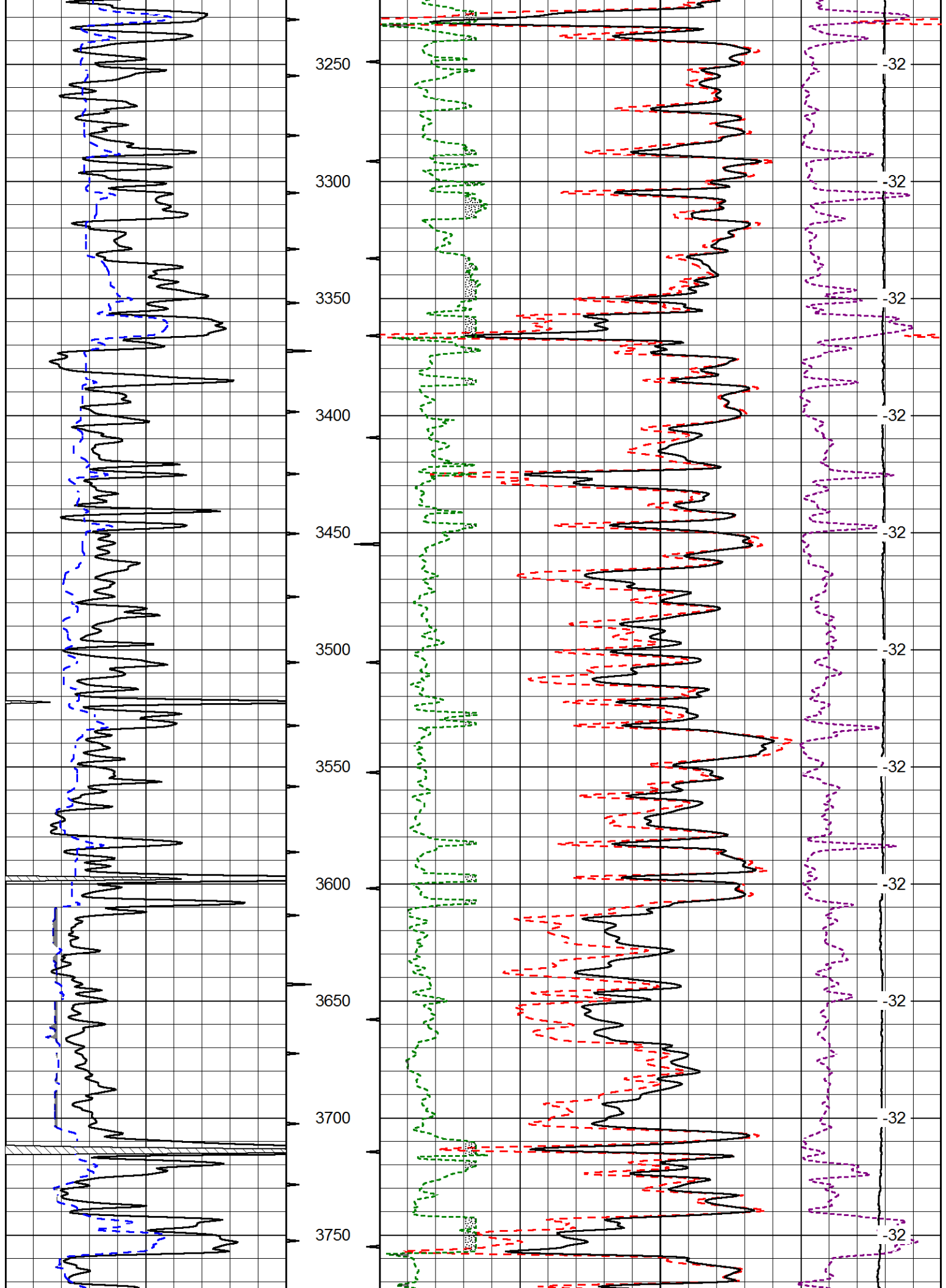
0	Gamma Ray (GAPI)	150
6	Caliper (in)	16

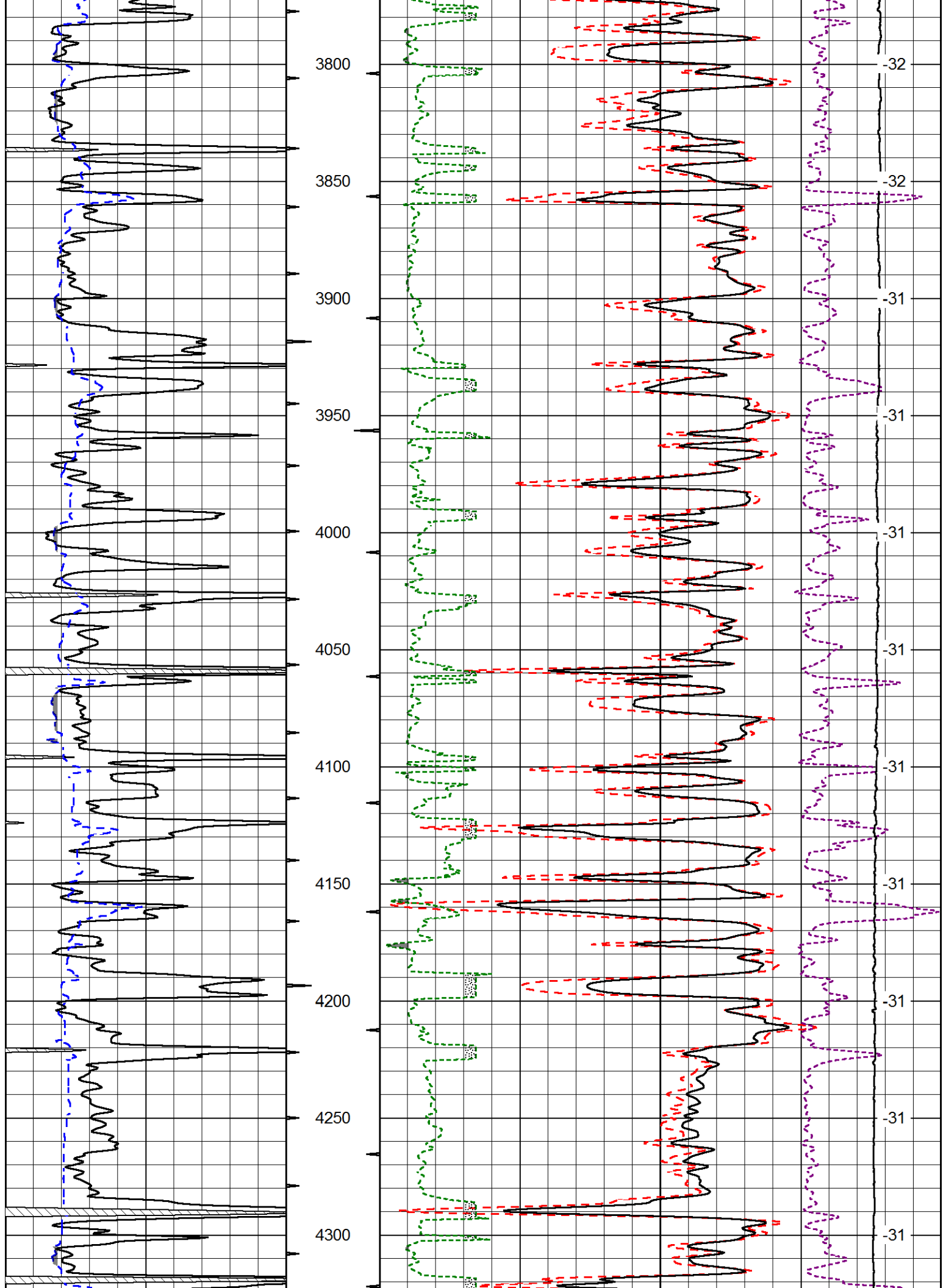
30	Compensated Density (pu)		-10
2	Bulk Density (g/cc)		3
15000	Line Tension (lb)		0
2.625	DGA (g/cc)	3.425	-0.25
	Correction (g/cc)		0.25

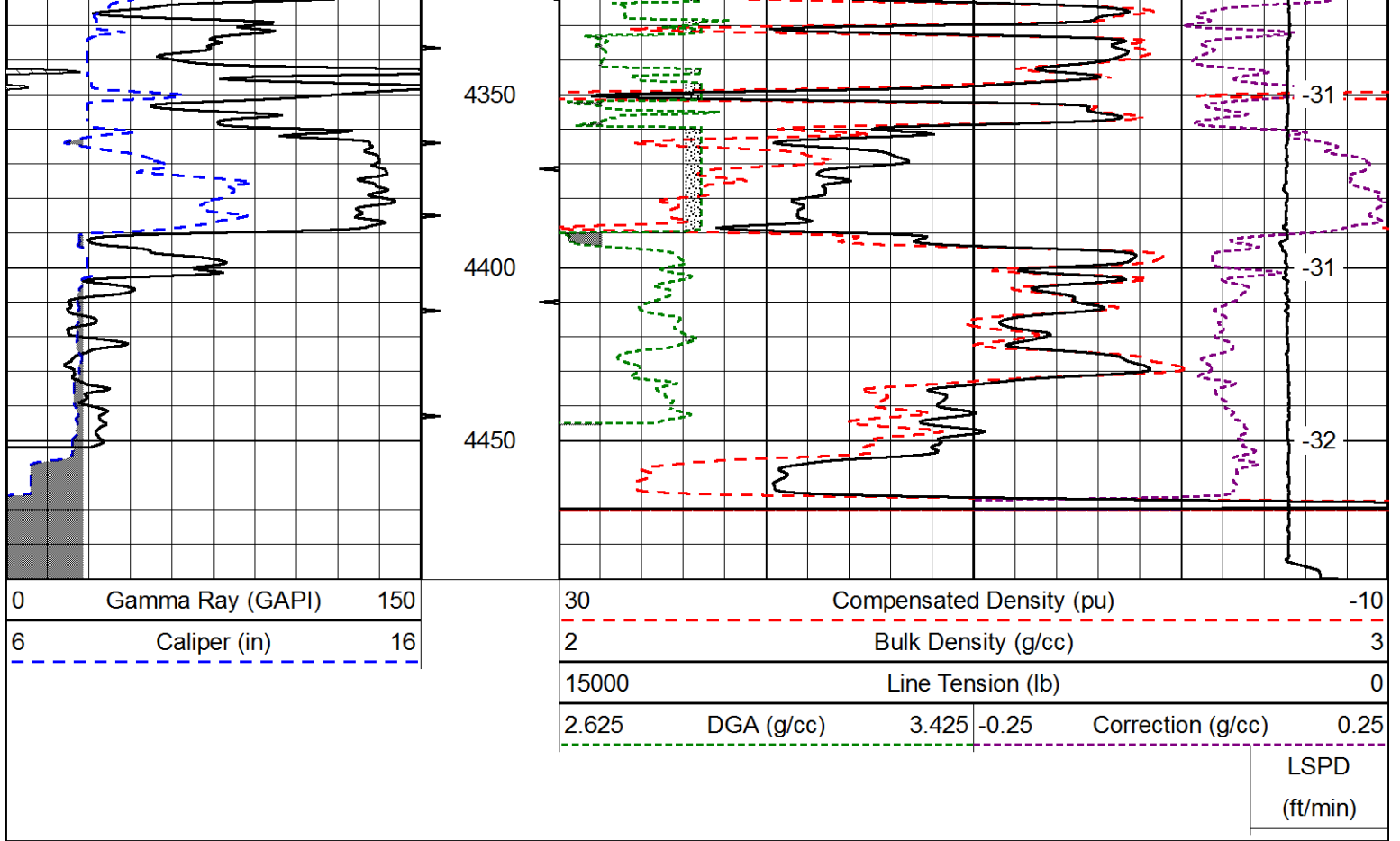
LSPD
(ft/min)



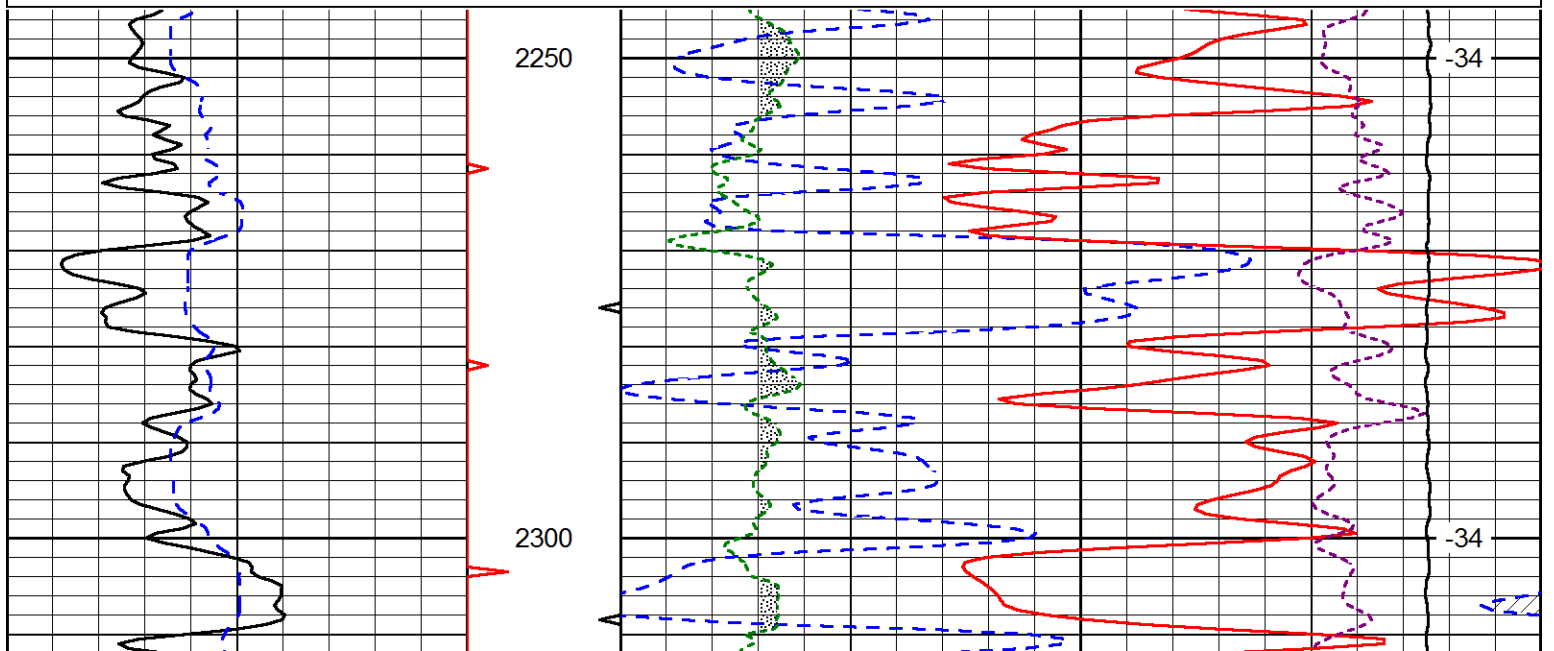
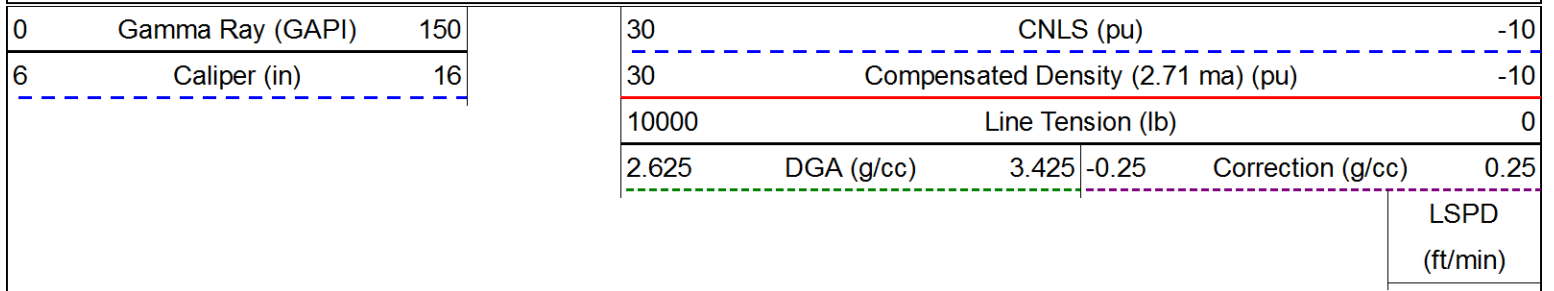


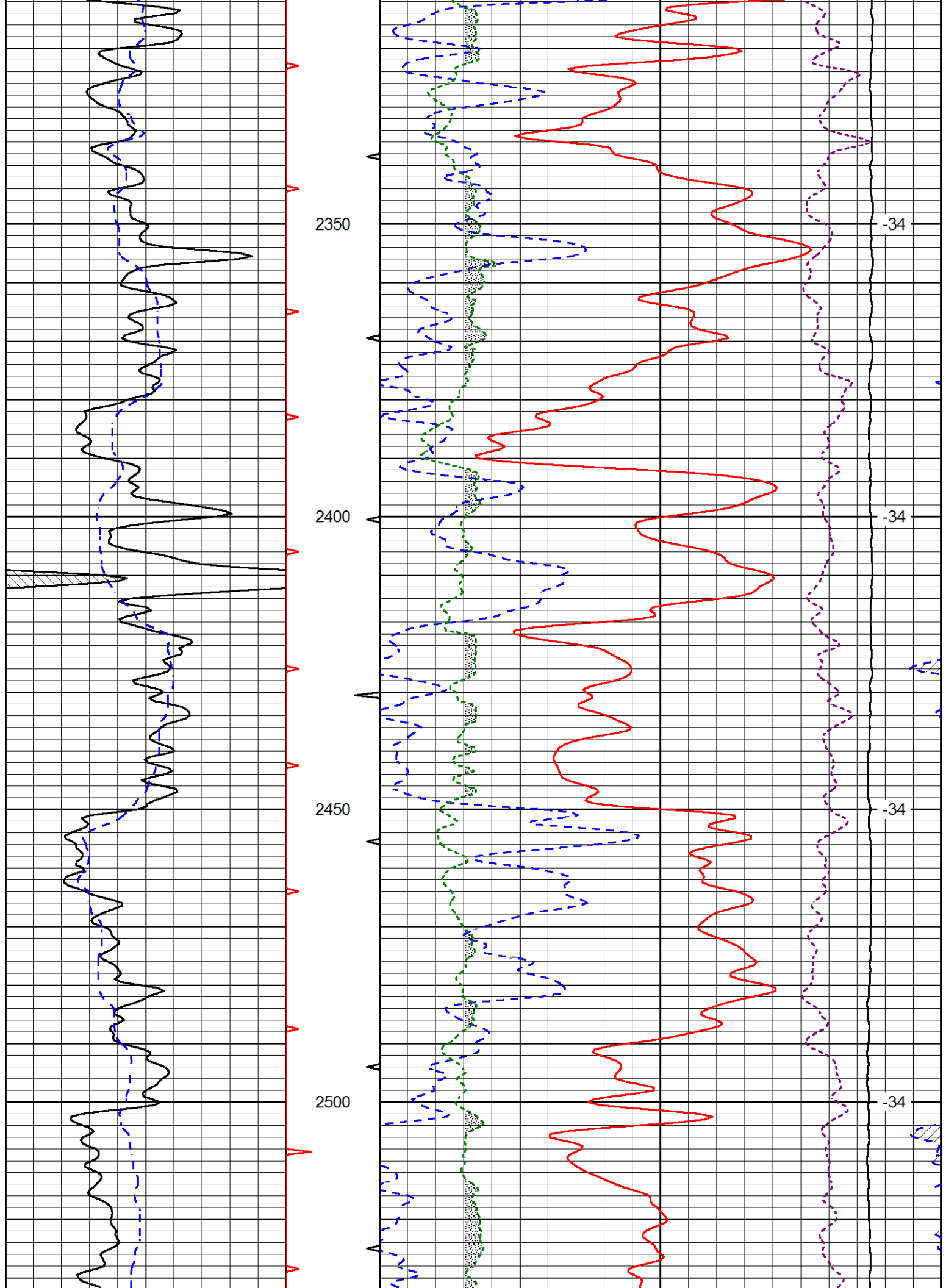


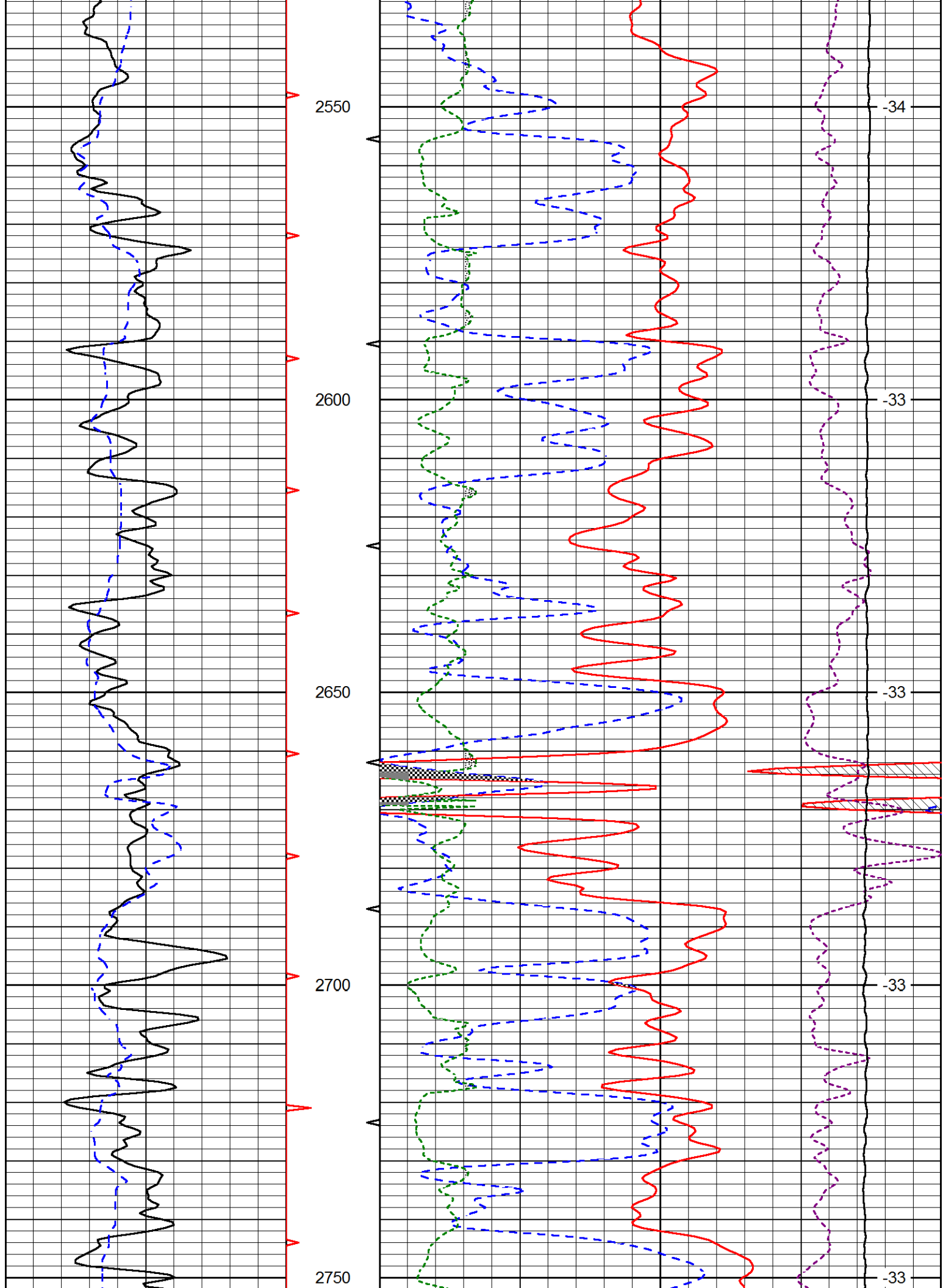


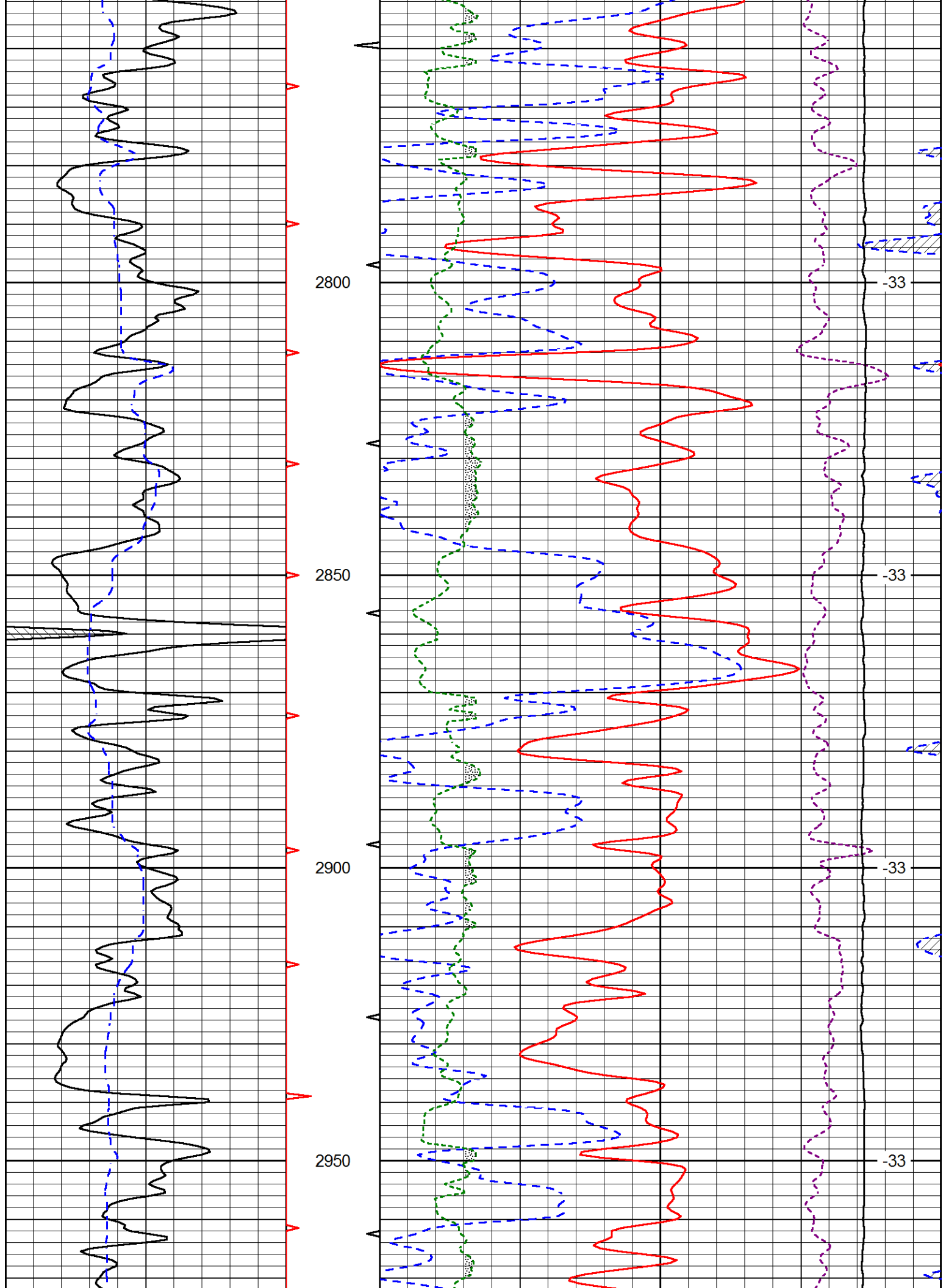


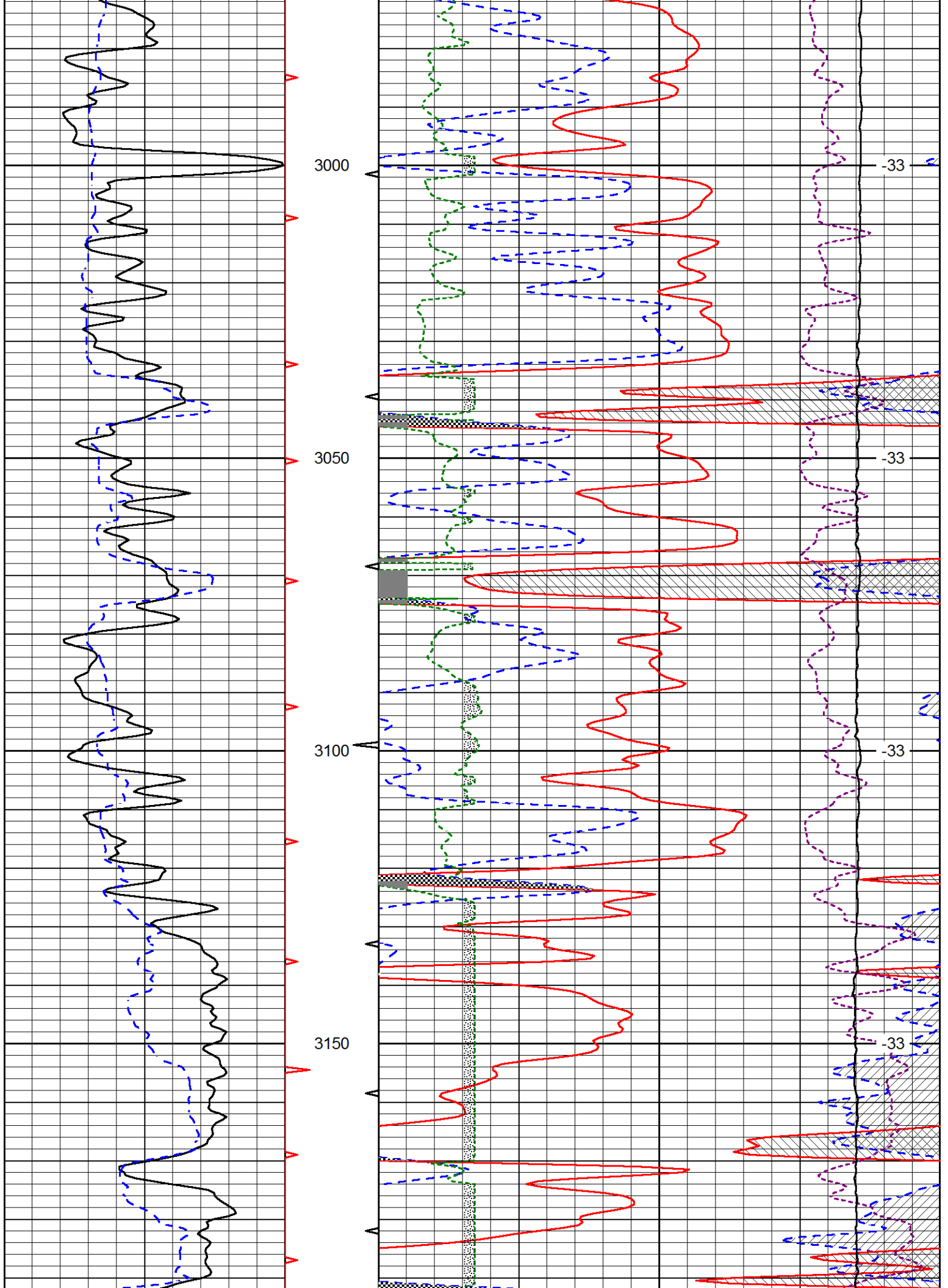
Database File triple_crown_marhofer_1_27hd.db
 Dataset Pathname DIL/tripfinal
 Presentation Format cndlspec
 Dataset Creation Wed Jul 29 10:13:22 2015
 Charted by Depth in Feet scaled 1:240

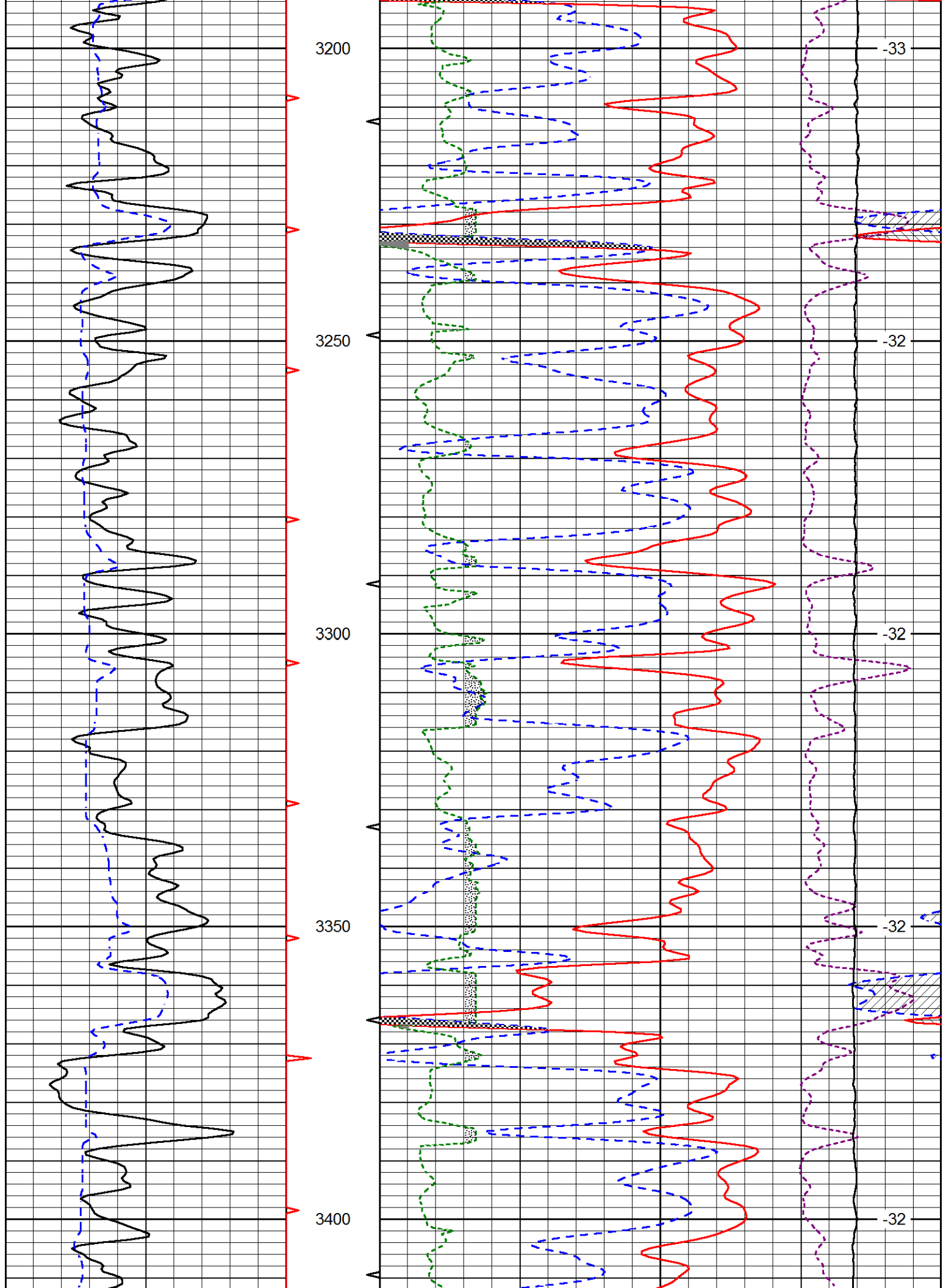


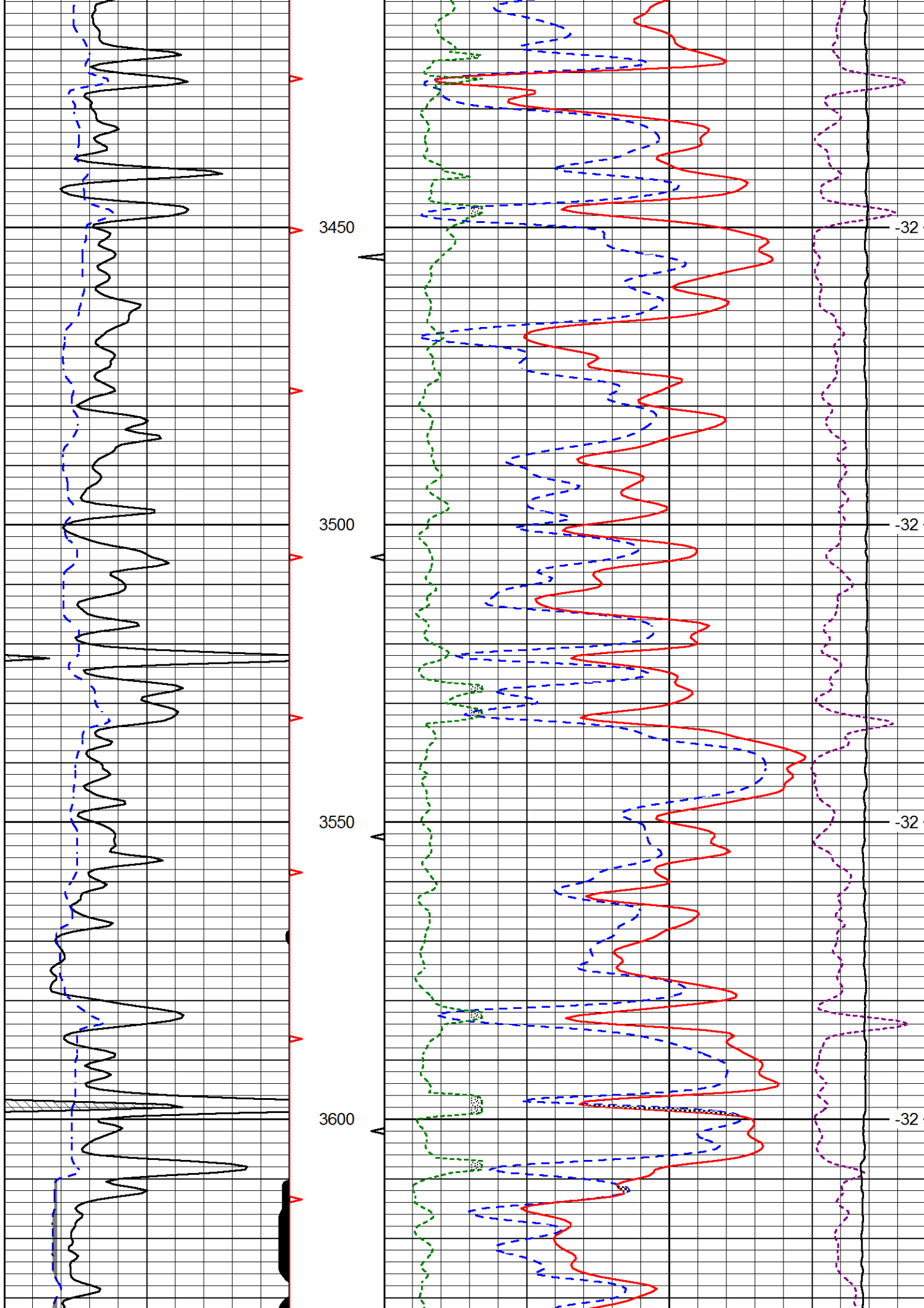


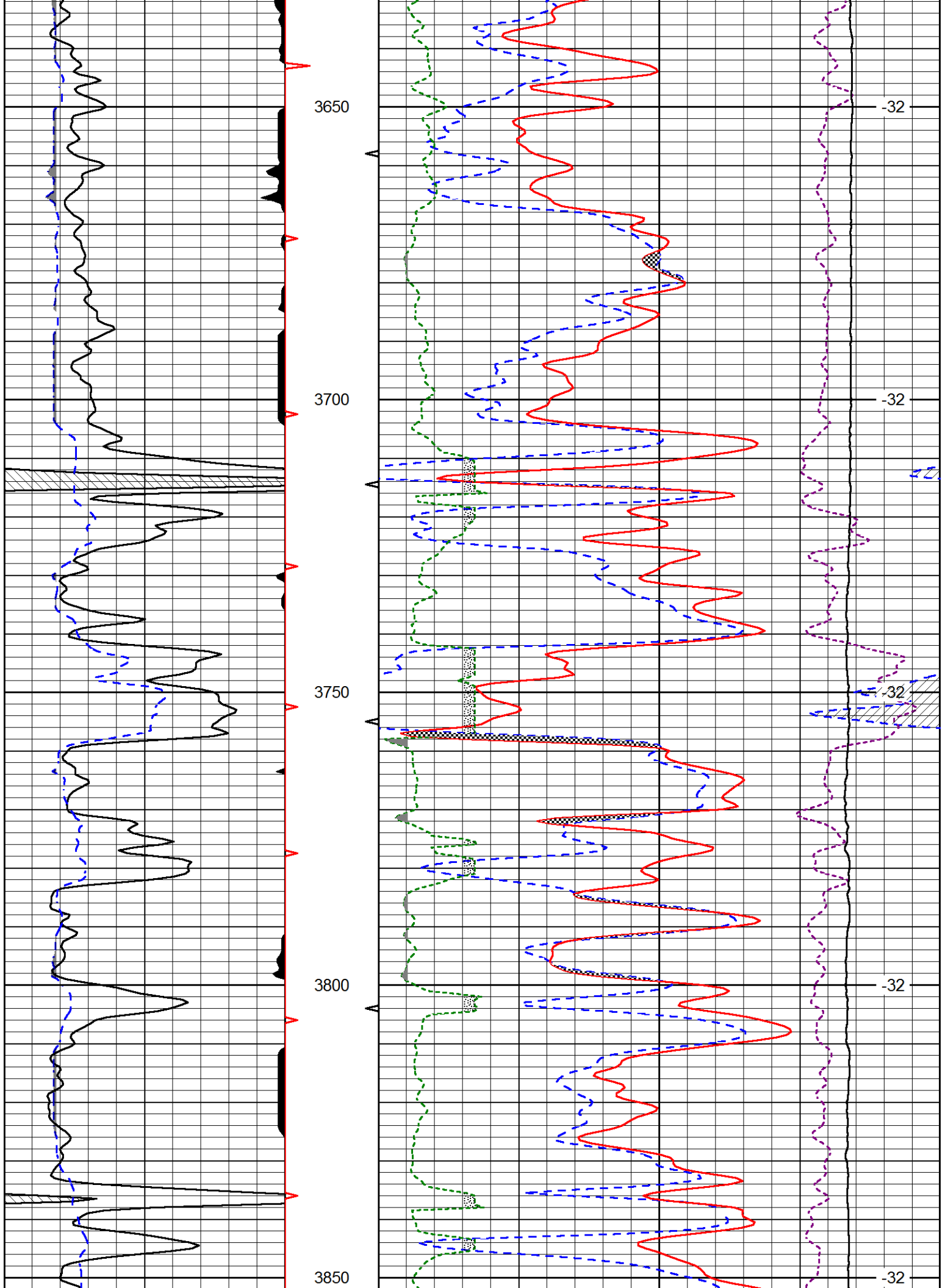


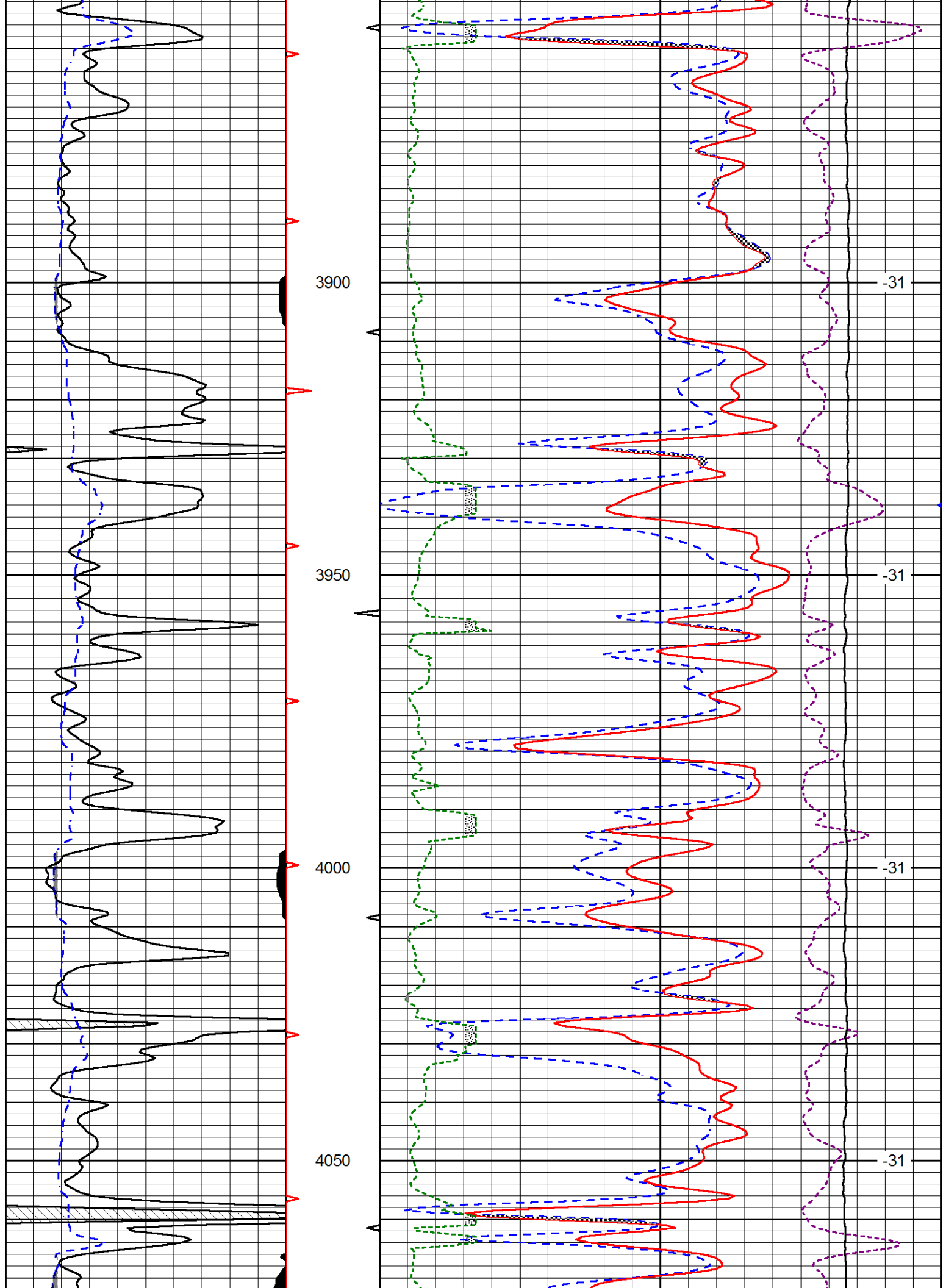


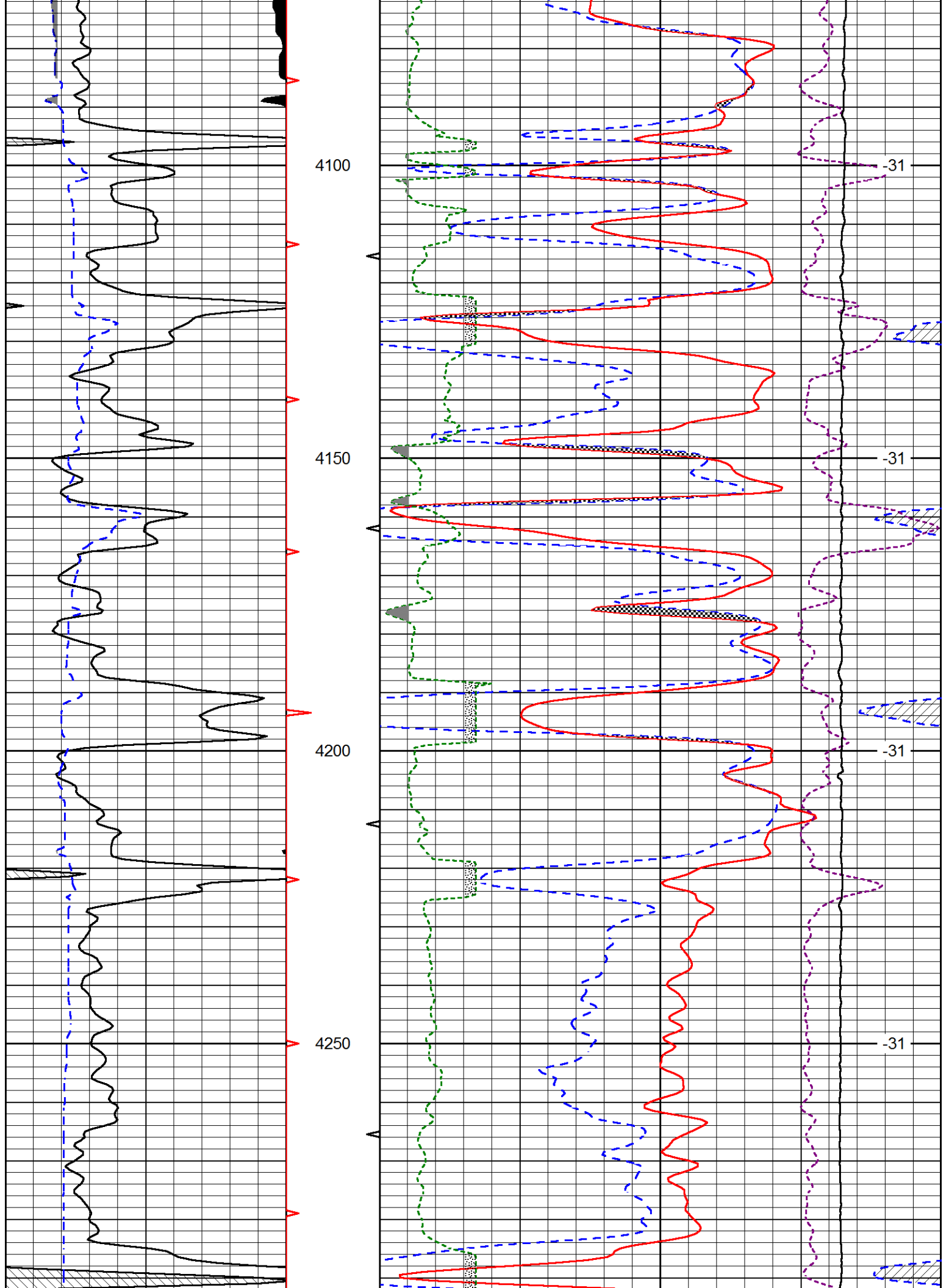


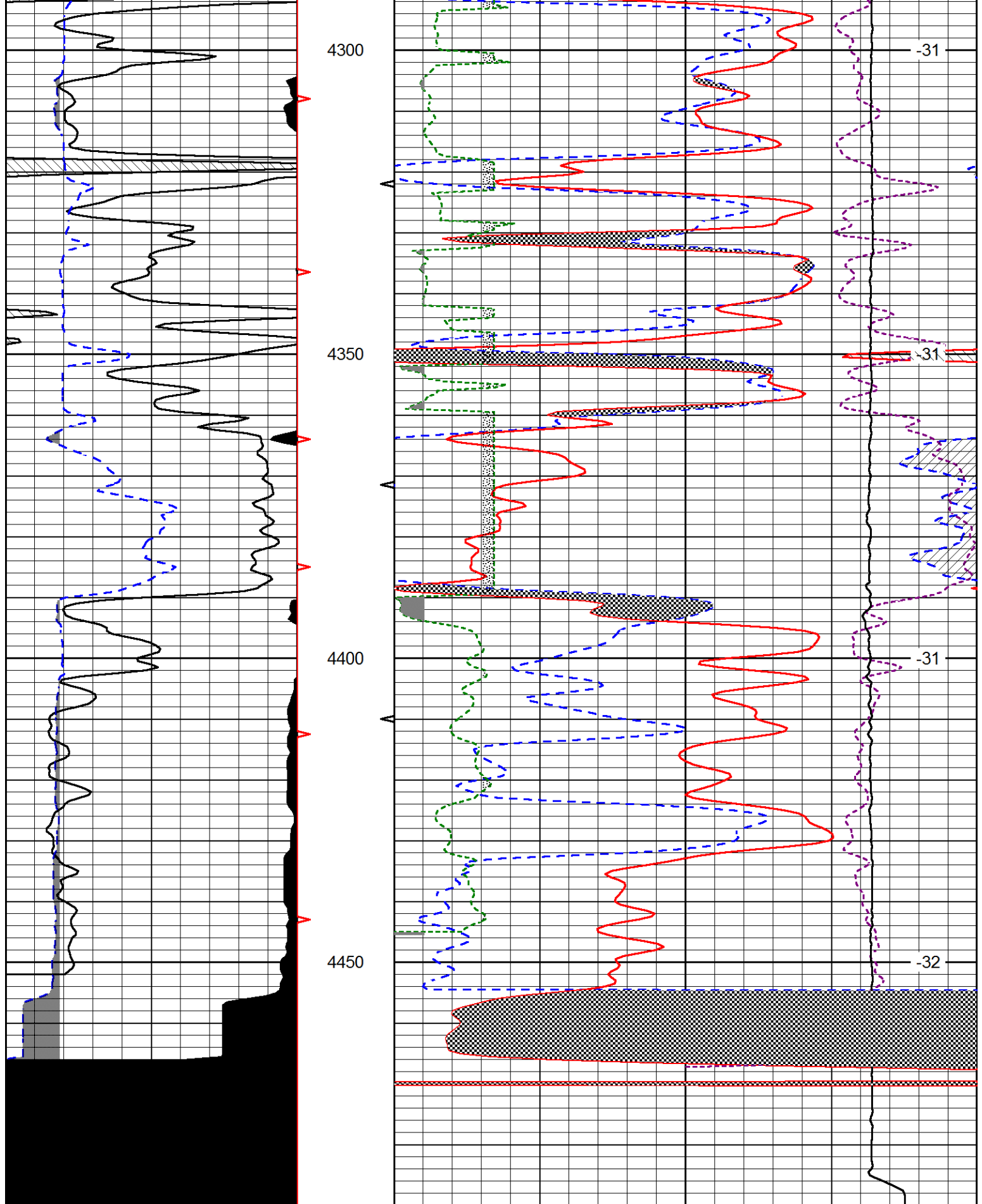












0	Gamma Ray (GAPI)	150
6	Caliper (in)	16

30	CNLS (pu)		-10
30	Compensated Density (2.71 ma) (pu)		-10
10000	Line Tension (lb)		0
2.625	DGA (g/cc)	3.425 -0.25	Correction (g/cc) 0.25

LSPD

