



DUAL INDUCTION LOG

Company **TRIPLE CROWN OPERATING, LLC**
 Well **MARHOFER NO. 1-27**
 Field **REINERT**
 County **NESS**
 State **KANSAS**

Company **TRIPLE CROWN OPERATING, LLC**
 Well **MARHOFER NO. 1-27**
 Field **REINERT**
 County **NESS** State **KANSAS**

Location: **2310' FNL & 1980' FEL**
SEC 27 TWP 20S RGE 23W
 Permanent Datum **GROUND LEVEL** Elevation **2212'**
 Log Measured From **KELLY BUSHING**
 Drilling Measured From **KELLY BUSHING**
 Other Services **CNL/CDL MEL**
 Elevation **2219'**
 K.B. **N/A**
 D.F. **2212'**
 G.L.

Date	7/29/15
Run Number	ONE
Depth Driller	4480'
Depth Logger	4485'
Bottom Logged Interval	4484'
Top Log Interval	250'
Casing Driller	8.625" @ 251'
Casing Logger	248'
Bit Size	7.875"
Type Fluid in Hole	CHEMICAL
Salinity, ppm CL	3,000
Density / Viscosity	9.2 51
pH / Fluid Loss	10.0 8.8
Source of Sample	Flowline
Rm @ Meas. Temp	.74 @ 74
Rmt @ Meas. Temp	.56 @ 74
Rmc @ Meas. Temp	1.0 @ 74
Source of Rmf / Rmc	Charts
Rm @ BHT	.45 @ 121
Operating Rig Time	3 HOURS
Max Rec. Temp. F	121
Equipment Number	108
Location	Hays
Recorded By	J. HENRICKSON
Witnessed By	ROD ANDERSEN
	J. LONG

<<< Fold Here >>>

All interpretations are opinions based on inferences from electrical or other measurements and Pioneer Wireline Services, LLC cannot and does not guarantee the accuracy or correctness of any interpretation, and Pioneer Wireline Services, LLC will not be liable or responsible for any loss, costs, damages, or expenses incurred or sustained by anyone resulting from any interpretation made by any of our officers, agents or employees.

Comments

N/A DENOTES NOT AVAILABLE OR NON-APPLICABLE.

NESS CITY KANSAS
 SOUTH TO 20 RD, 3 1/2 EAST, WEST INTO RIGHT AFTER BRIDGE

Log Measured From: **KELLY BUSHING** 7 Ft. Above Permanent Datum

THANK YOU FOR USING PIONEER ENERGY SERVICES
www.pioneerenergy.com 785-625-3858

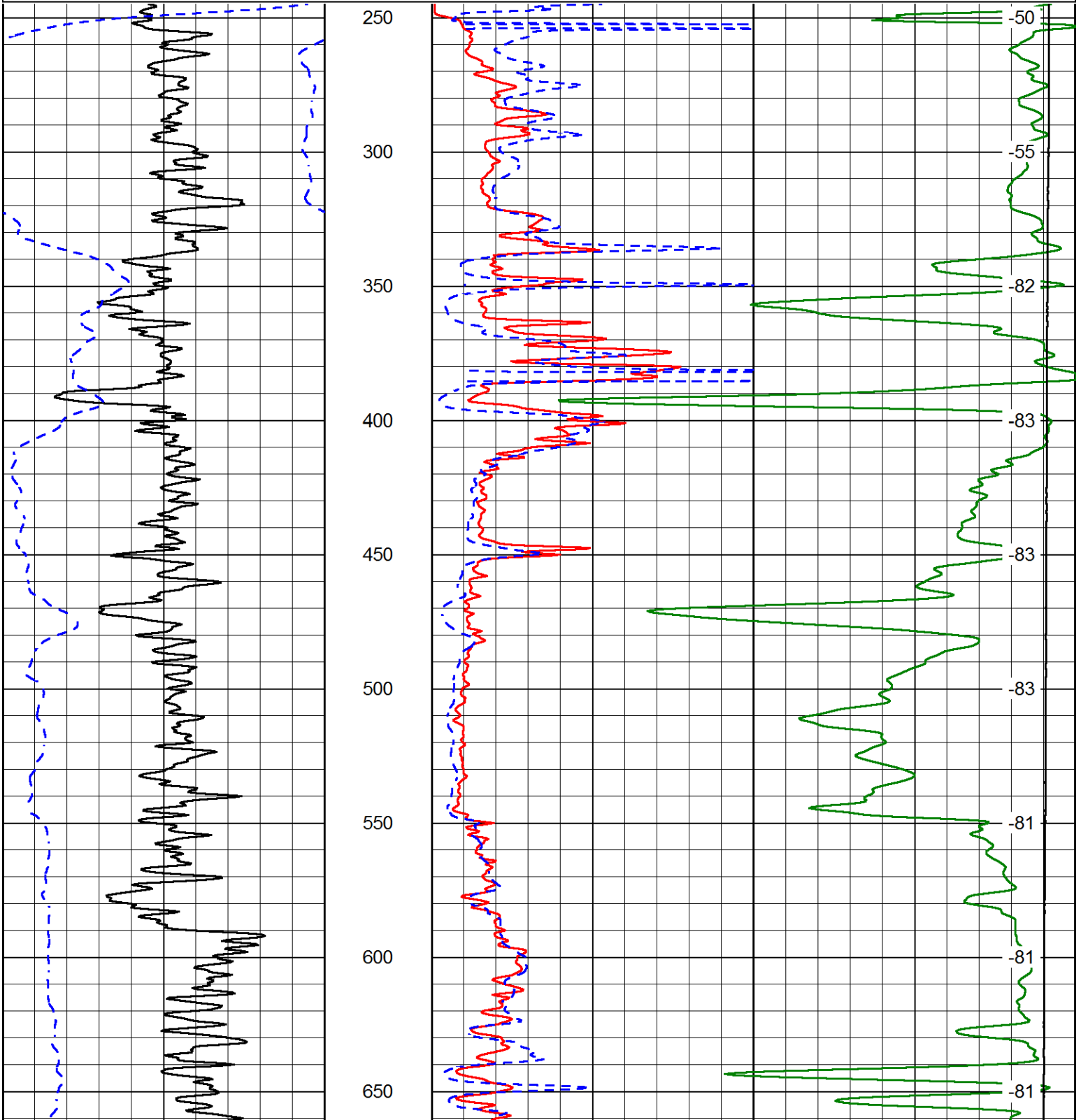
Your Pioneer Energy Services Crew	This Log Record Was Witnessed By
Engineer: J. HENRICKSON	Primary Witness: ROD ANDERSEN
Operator: J. LONG	Secondary Witness:
Operator:	Secondary Witness:
Operator:	Secondary Witness:

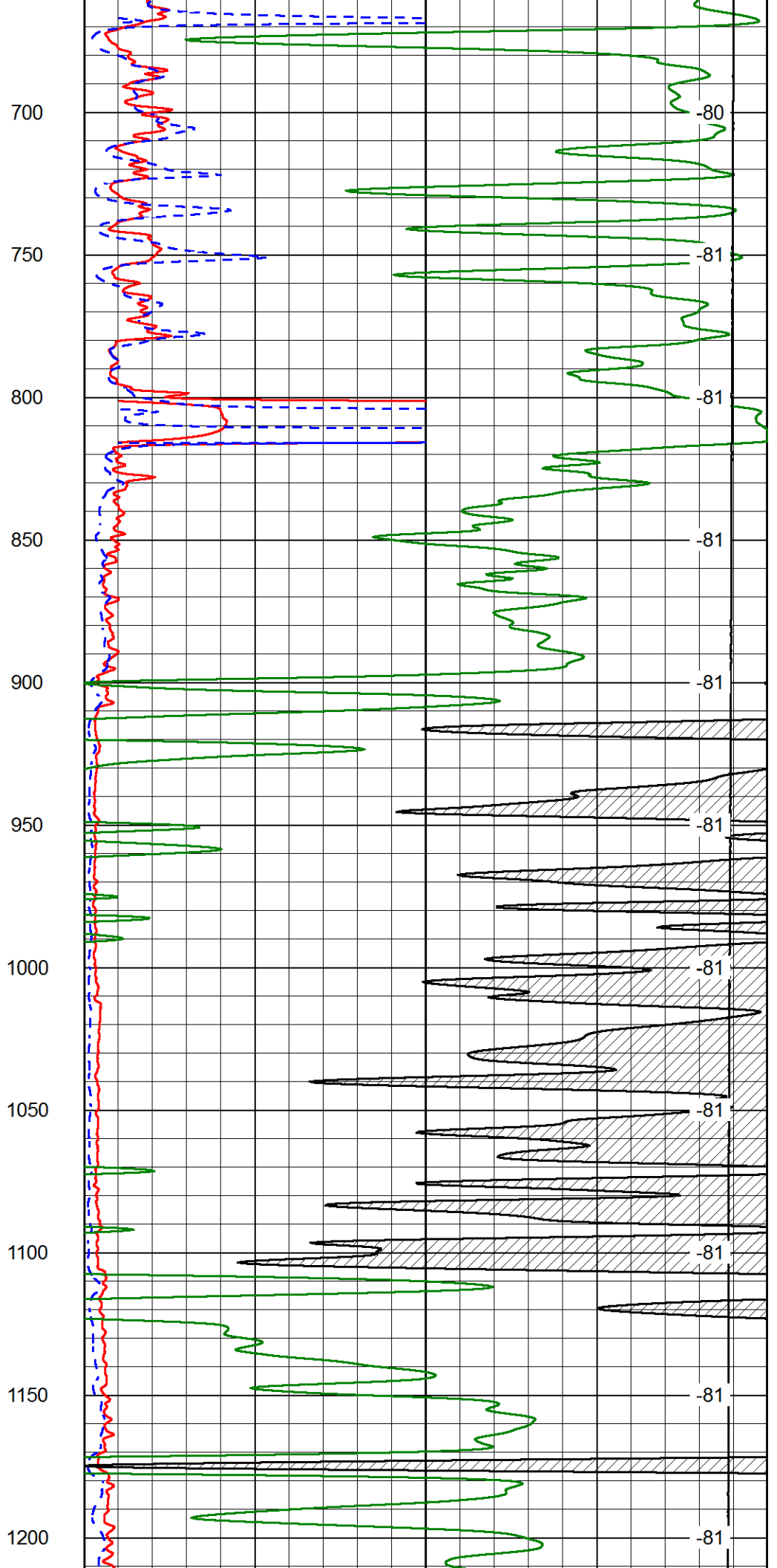
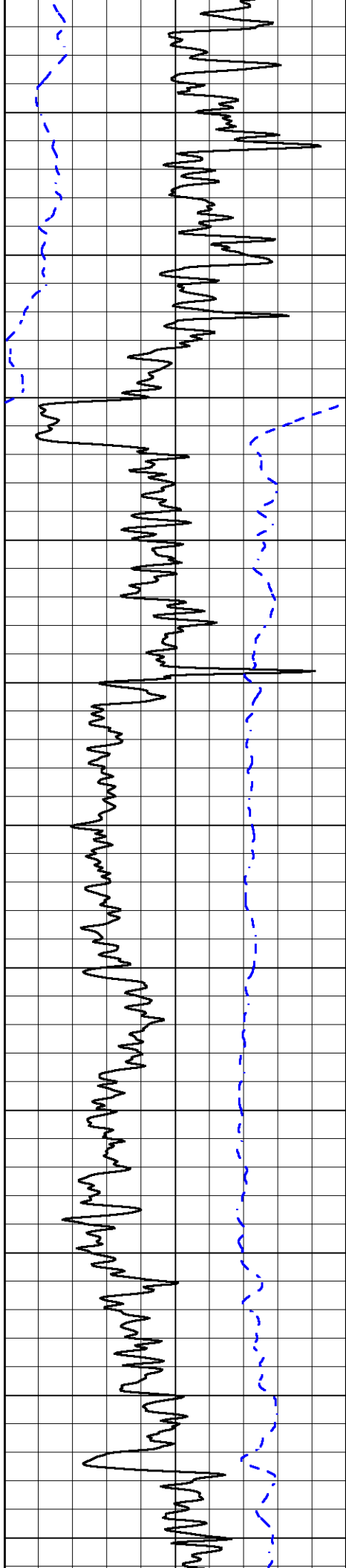
Database File triple_crown_marhofer_1_27hd.db
 Dataset Pathname DIL/tripfinal
 Presentation Format dil2in
 Dataset Creation Wed Jul 29 10:13:22 2015
 Charted by Depth in Feet scaled 1:600

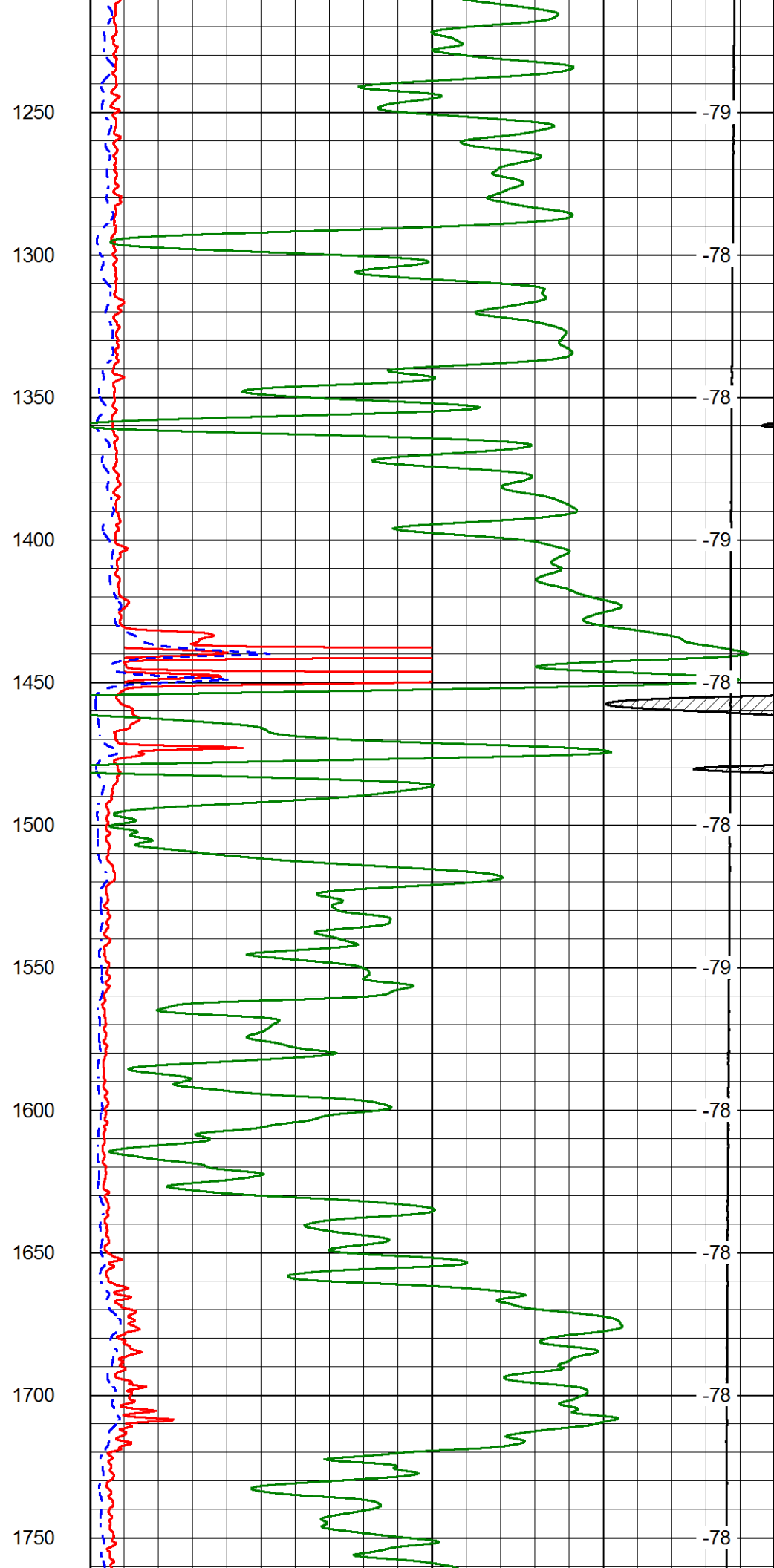
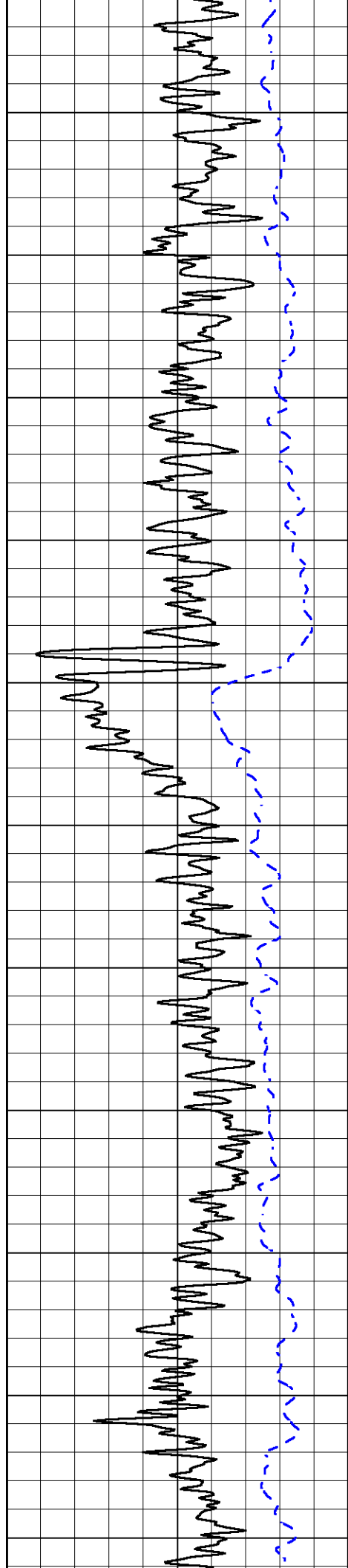
0 Gamma Ray (GAPI) 150
 -200 SP (mV) 0

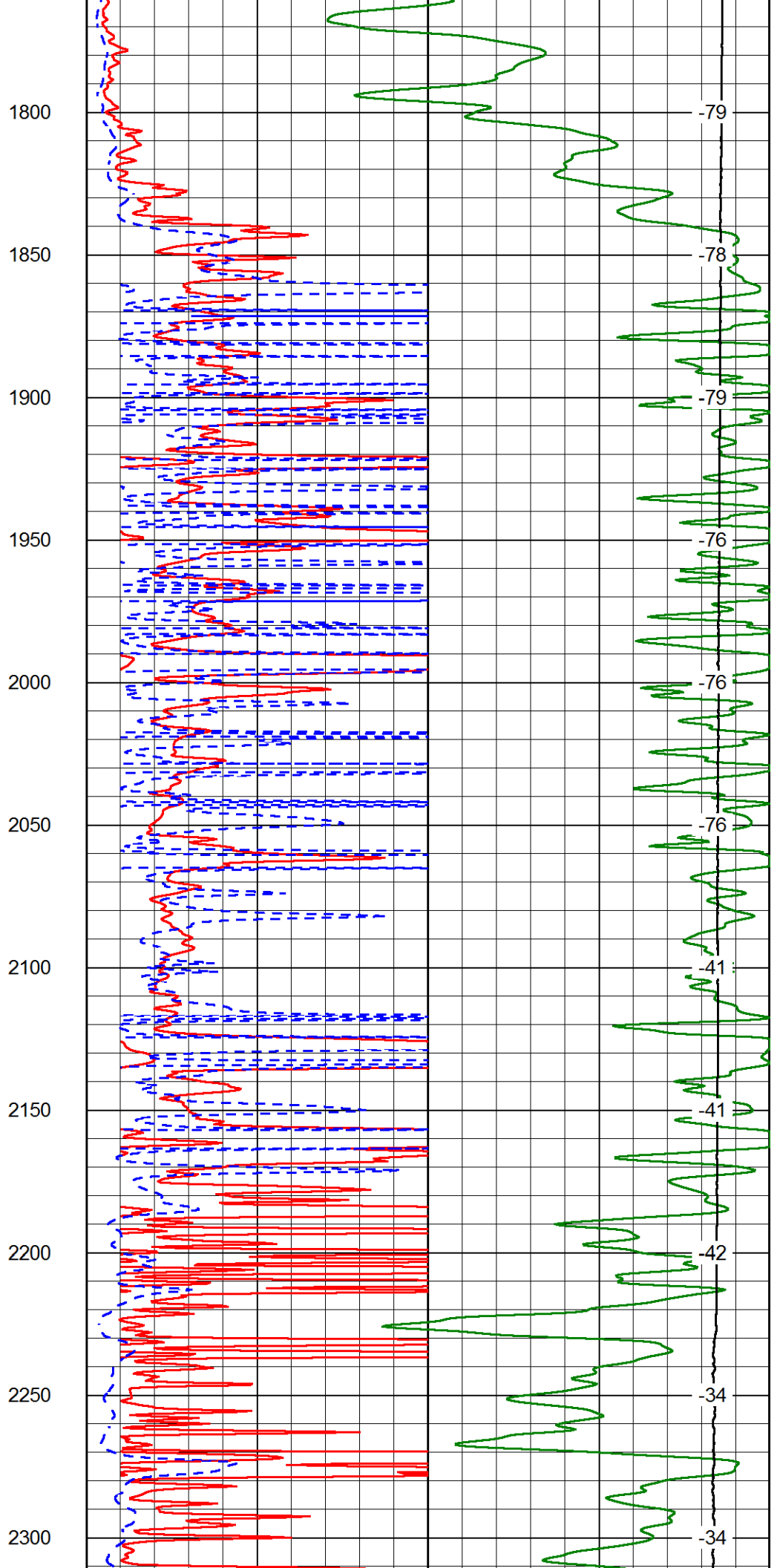
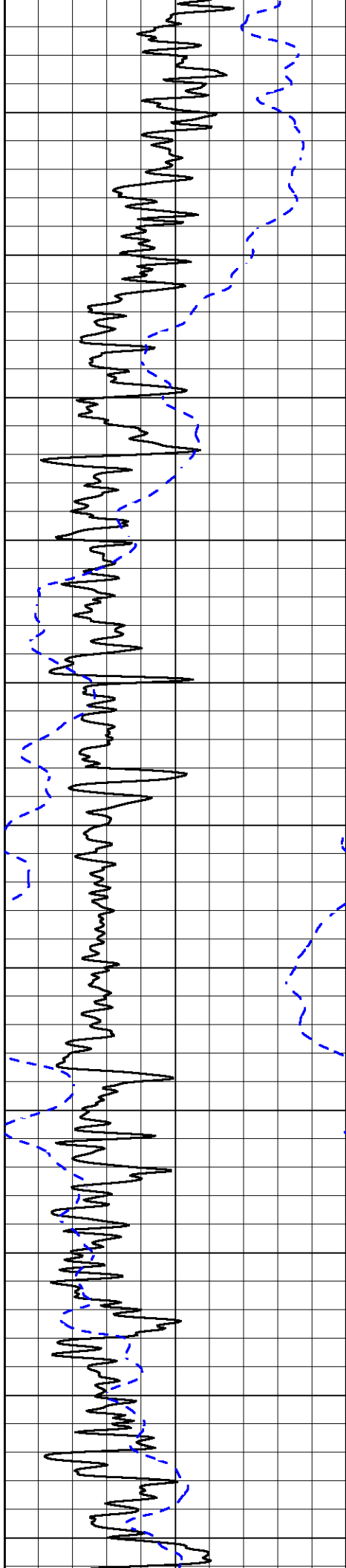
1000 Conductivity 0
 15000 Line Tension (lb) 0

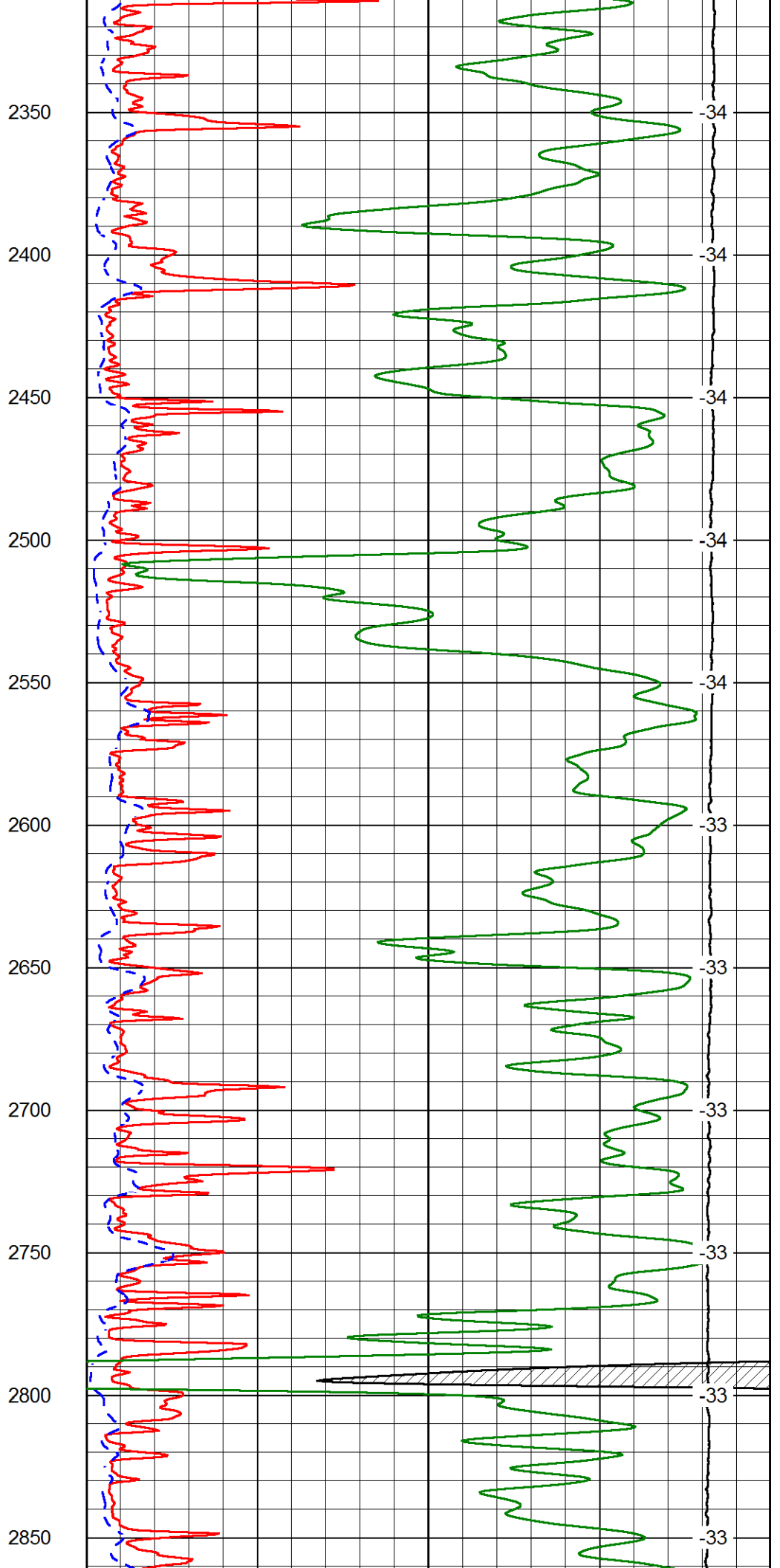
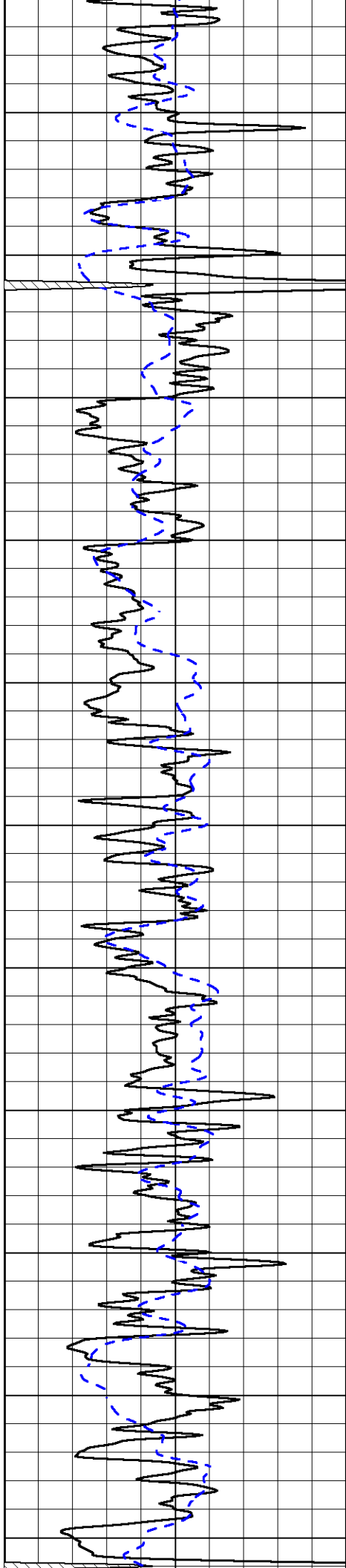
0 Shallow Resistivity (Ohm-m) 50
 0 Deep Resistivity (Ohm-m) 50
 Shallow Resistivity
 50 (Ohm-m) 500
 50 Deep Resistivity (Ohm-m) 500
 LSPD (ft/min)

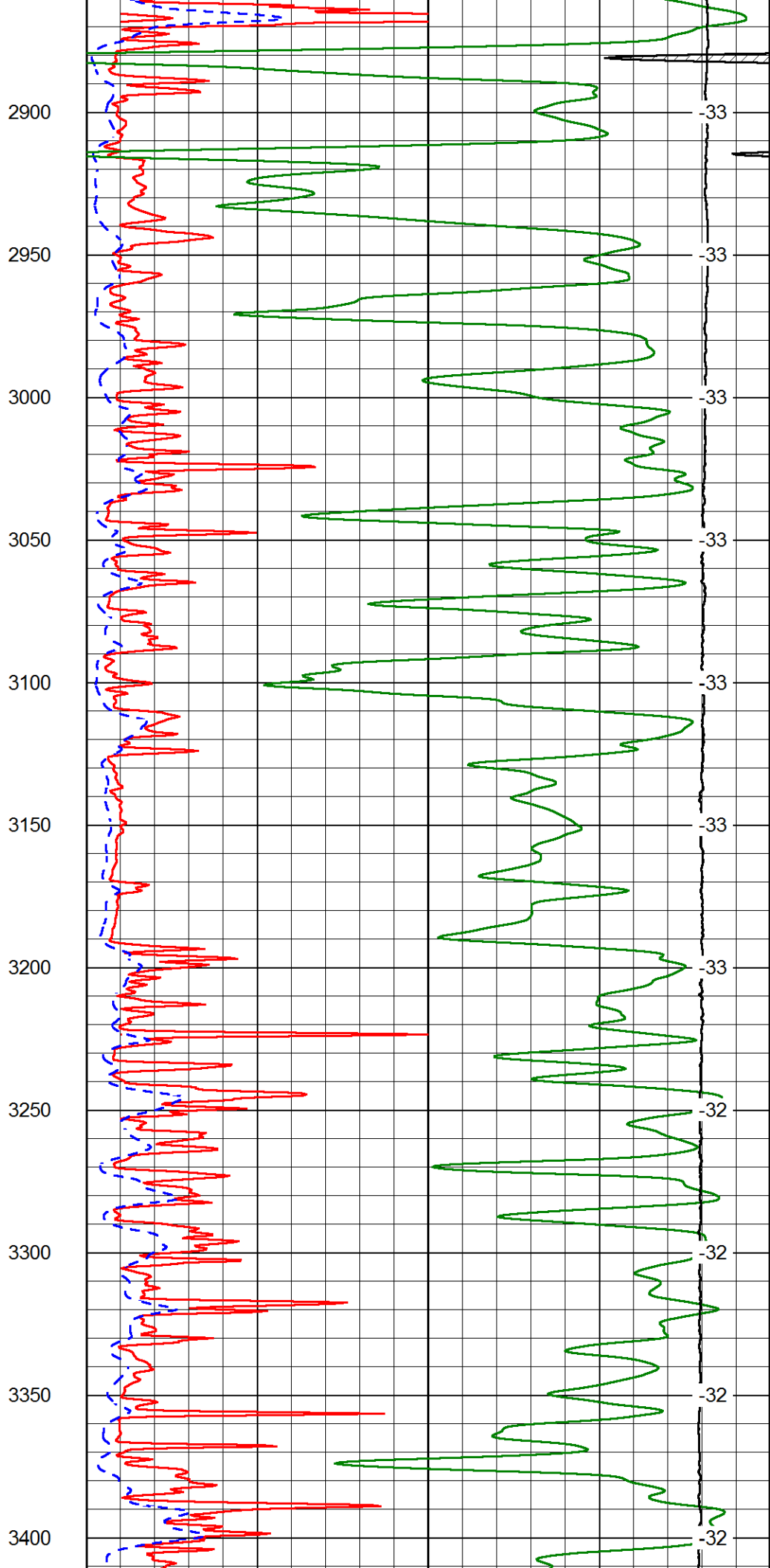
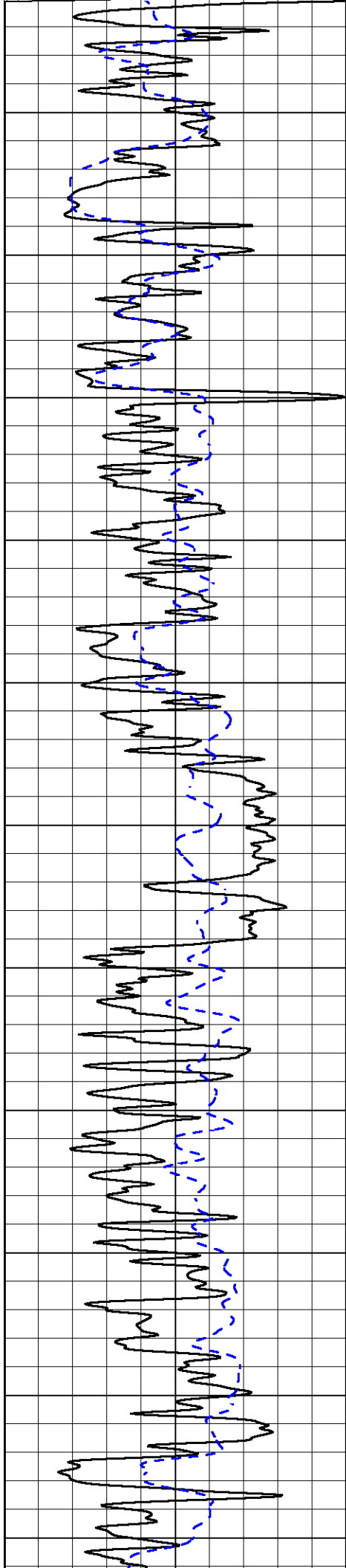


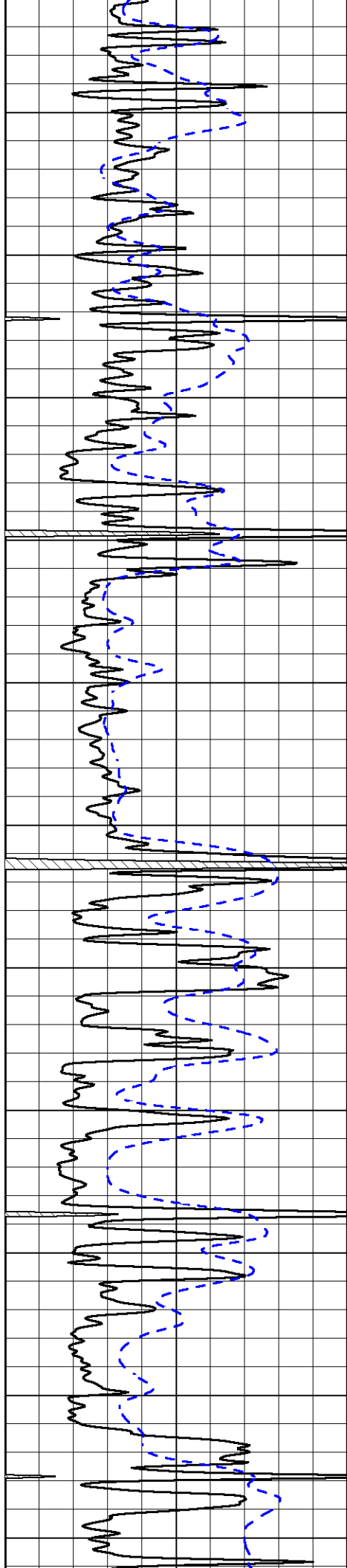












3450

3500

3550

3600

3650

3700

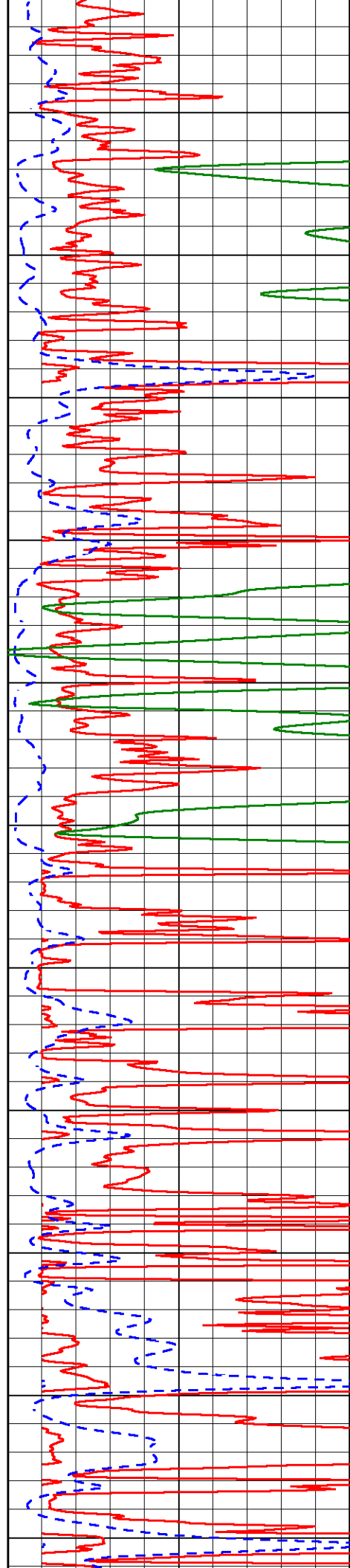
3750

3800

3850

3900

3950



-32

-32

-32

-32

-32

-32

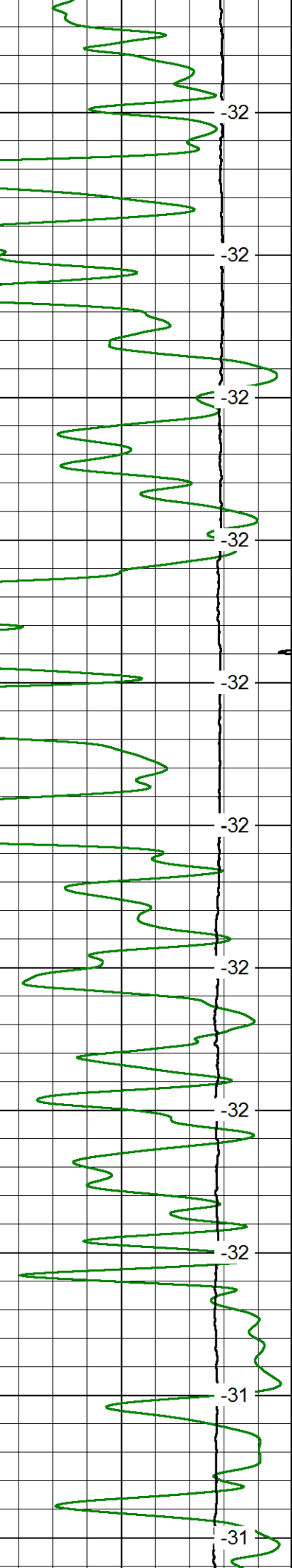
-32

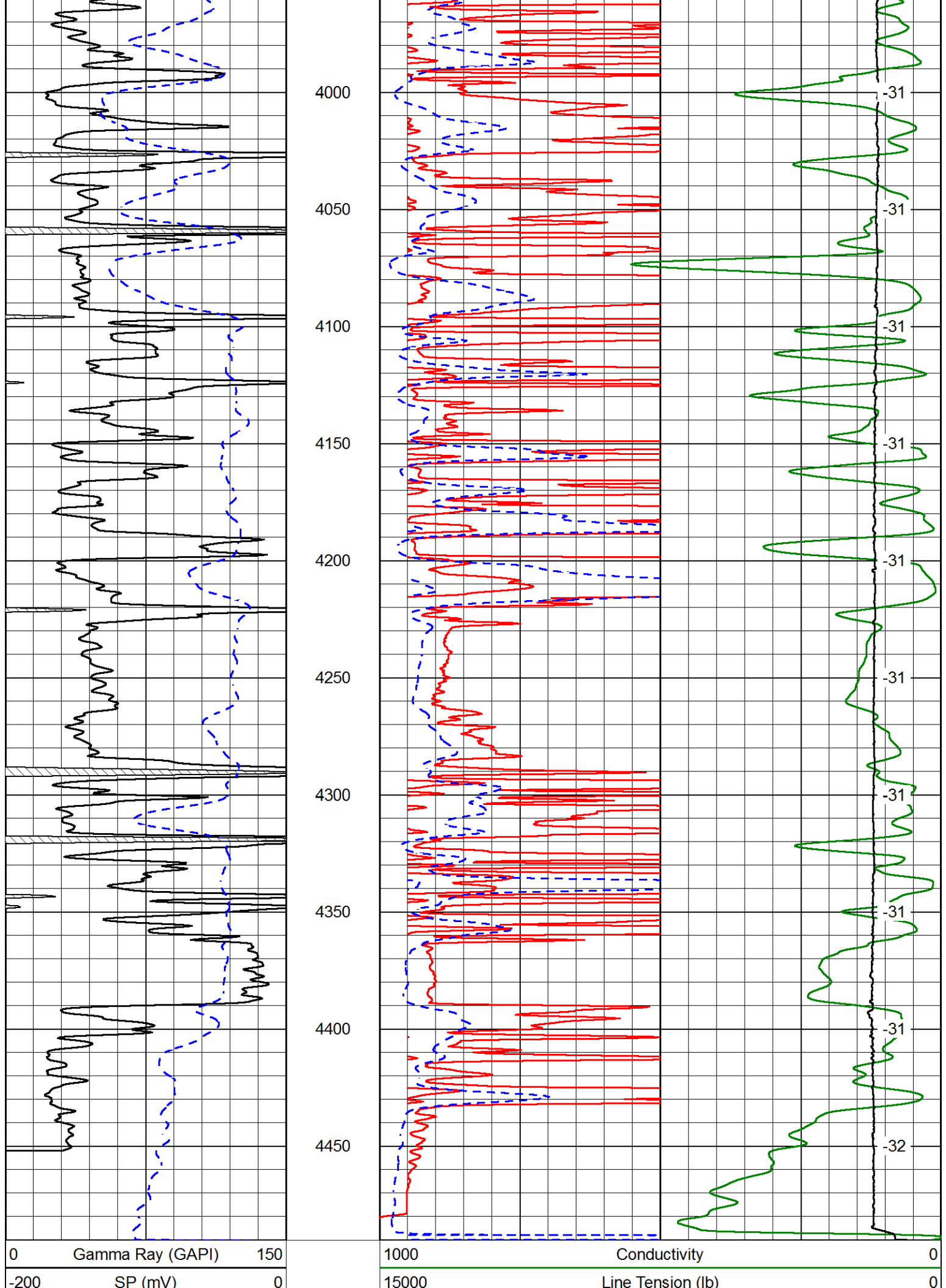
-32

-32

-31

-31





0	Shallow Resistivity (Ohm-m)	50
0	Deep Resistivity (Ohm-m)	50
Shallow Resistivity		
50	(Ohm-m)	500
50	Deep Resistivity (Ohm-m)	500

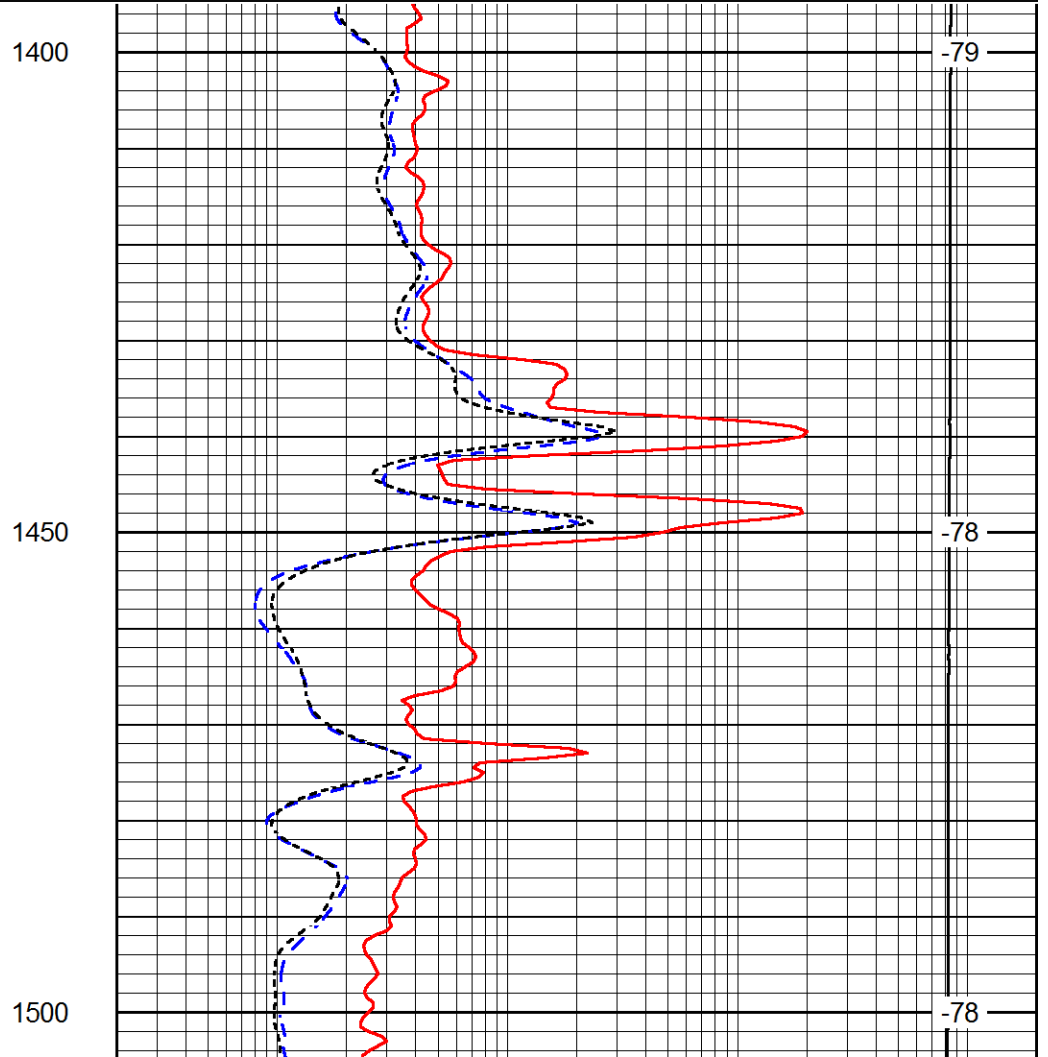
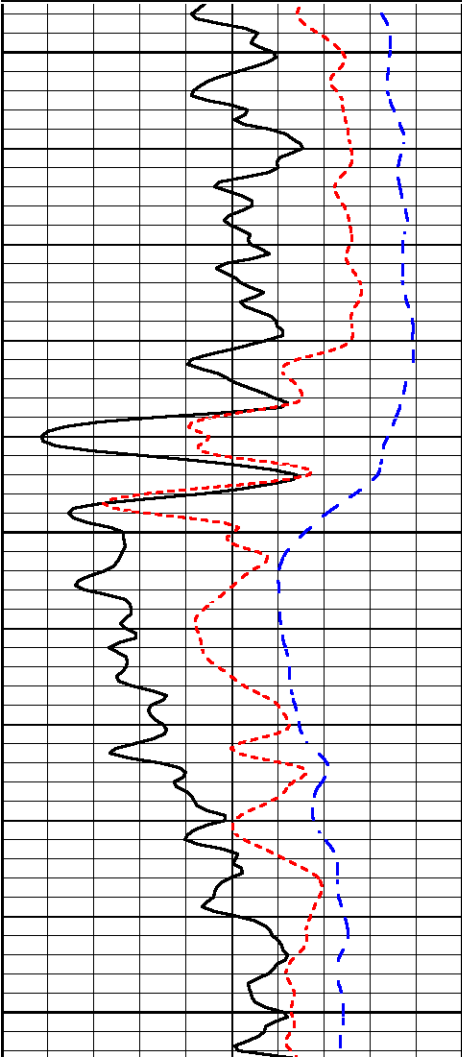
LSPD
(ft/min)

Database File triple_crown_marhofer_1_27hd.db
 Dataset Pathname DIL/tripfinal
 Presentation Format dil
 Dataset Creation Wed Jul 29 10:13:22 2015
 Charted by Depth in Feet scaled 1:240

0	Gamma Ray (GAPI)	150
-160	RxoRt	40
-200	SP (mV)	0

0.2	Deep Resistivity (Ohm-m)	2000
0.2	Medium Resistivity (Ohm-m)	2000
0.2	Shallow Resistivity (Ohm-m)	2000
10000	Line Tension (lb)	0

LSPD
(ft/min)



0	Gamma Ray (GAPI)	150
-160	RxoRt	40
-200	SP (mV)	0

0.2	Deep Resistivity (Ohm-m)	2000
0.2	Medium Resistivity (Ohm-m)	2000
0.2	Shallow Resistivity (Ohm-m)	2000
10000	Line Tension (lb)	0

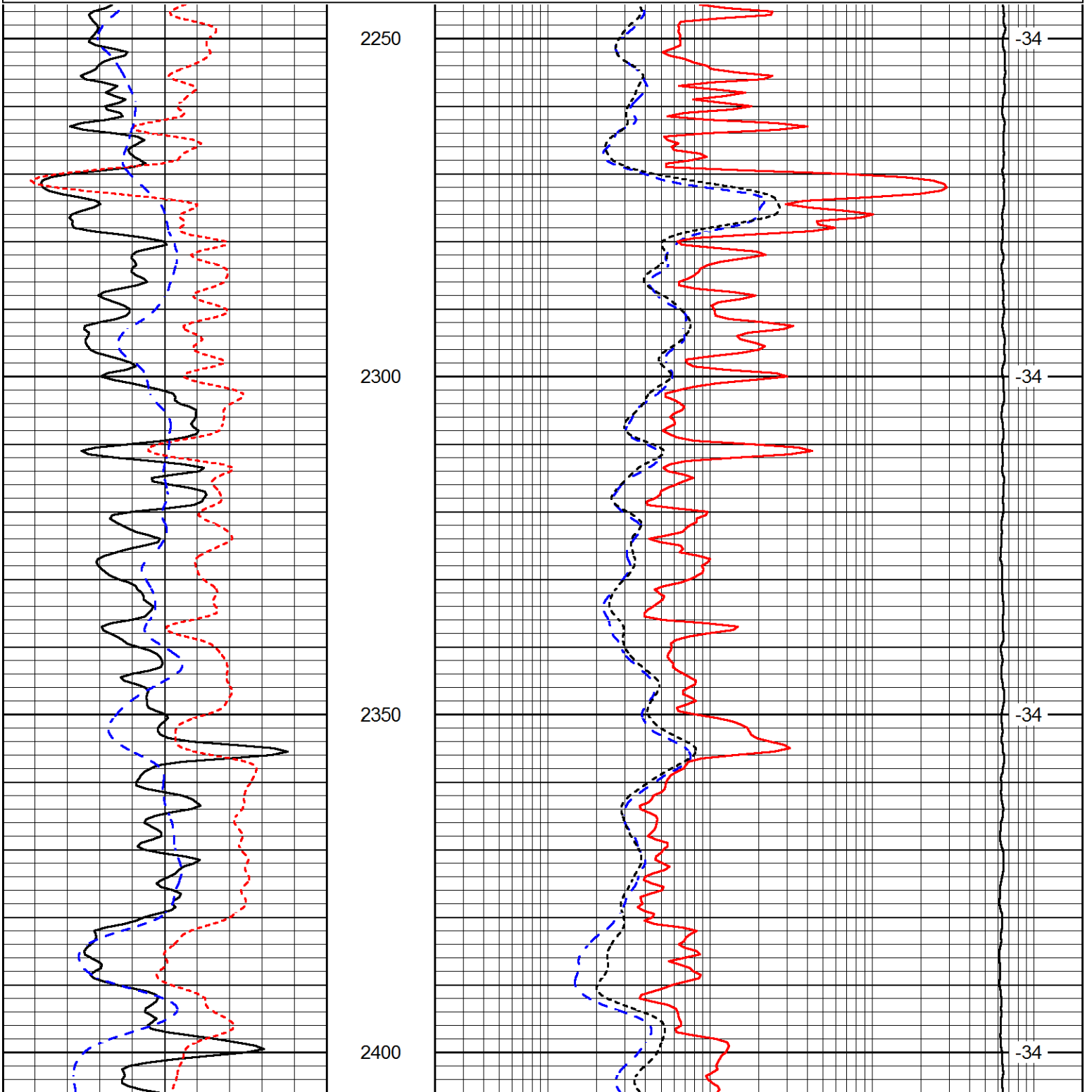
LSPD
(ft/min)

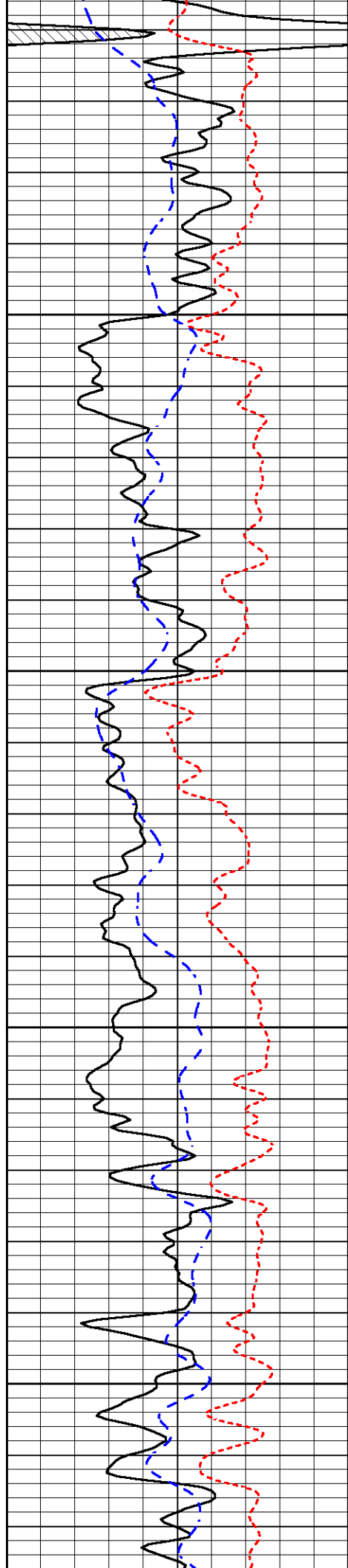
Database File triple_crown_marhofer_1_27hd.db
 Dataset Pathname DIL/tripfinal
 Presentation Format dil
 Dataset Creation Wed Jul 29 10:13:22 2015
 Charted by Depth in Feet scaled 1:240

0	Gamma Ray (GAPI)	150
-160	RxoRt	40
-200	SP (mV)	0

0.2	Deep Resistivity (Ohm-m)	2000
0.2	Medium Resistivity (Ohm-m)	2000
0.2	Shallow Resistivity (Ohm-m)	2000
10000	Line Tension (lb)	0

LSPD
(ft/min)



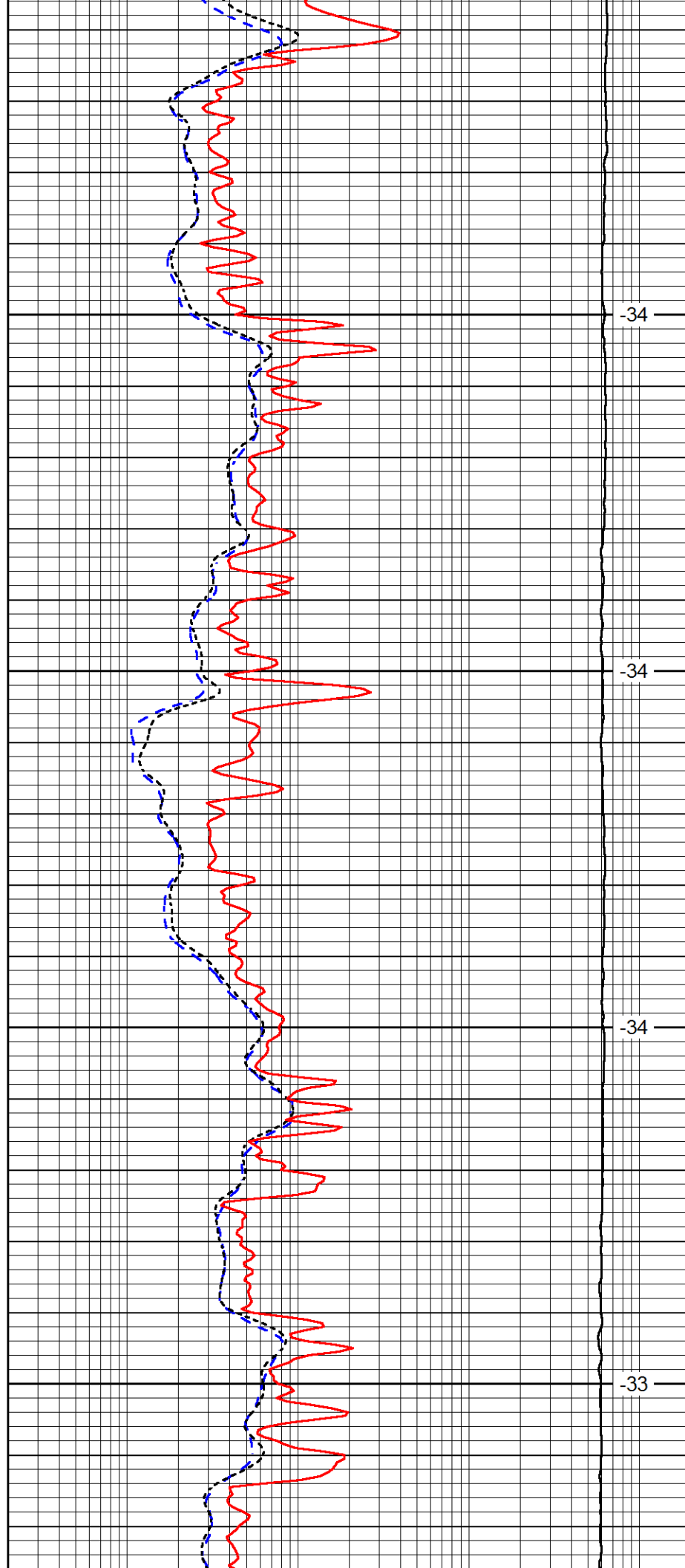


2450

2500

2550

2600

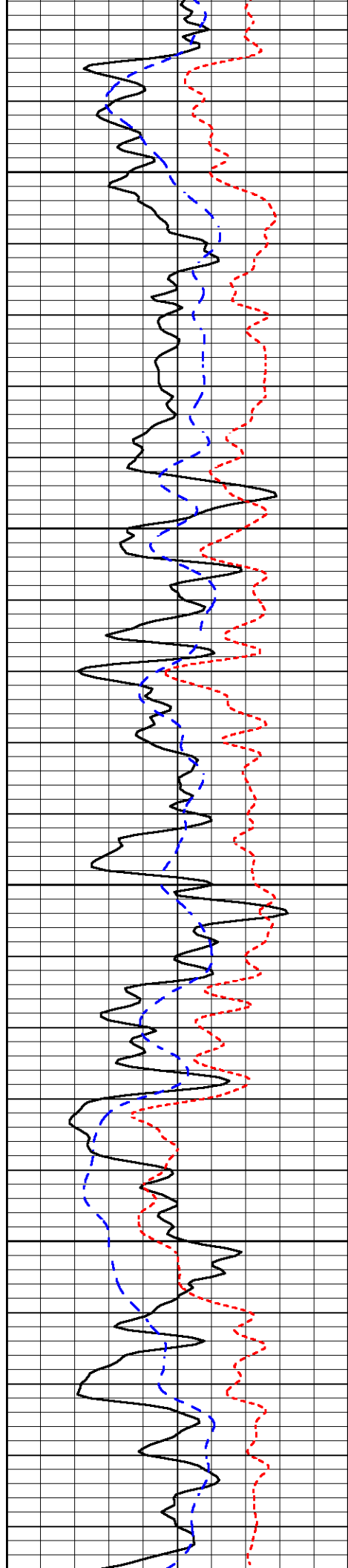


-34

-34

-34

-33

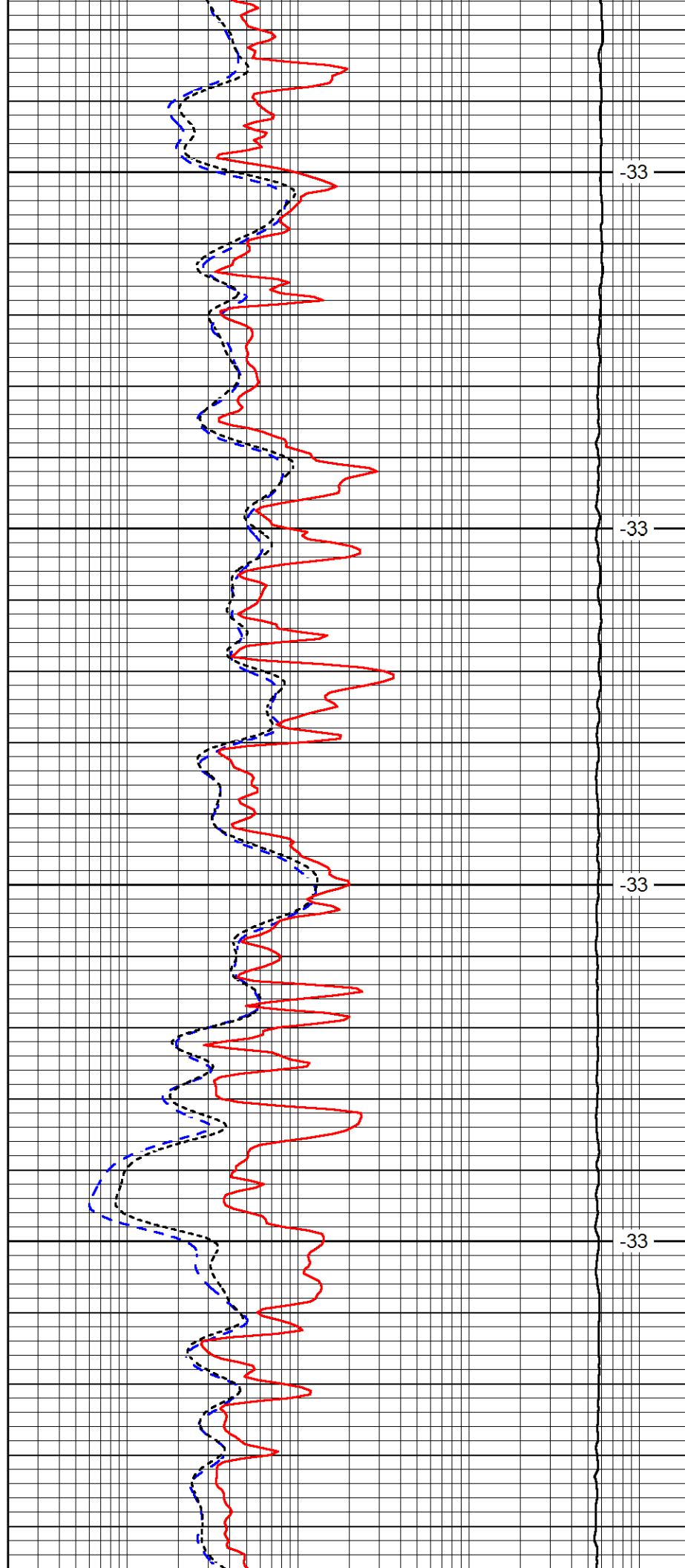


2650

2700

2750

2800

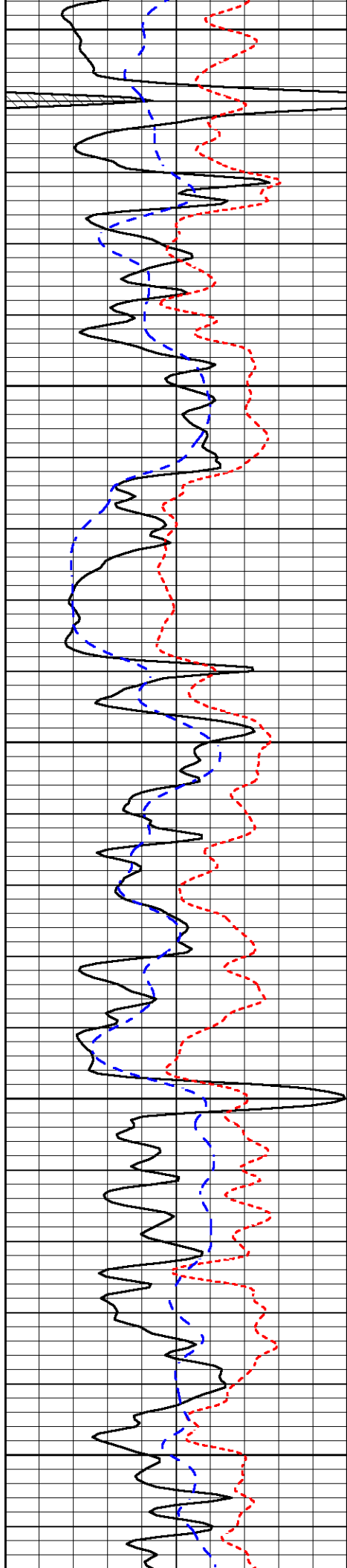


-33

-33

-33

-33



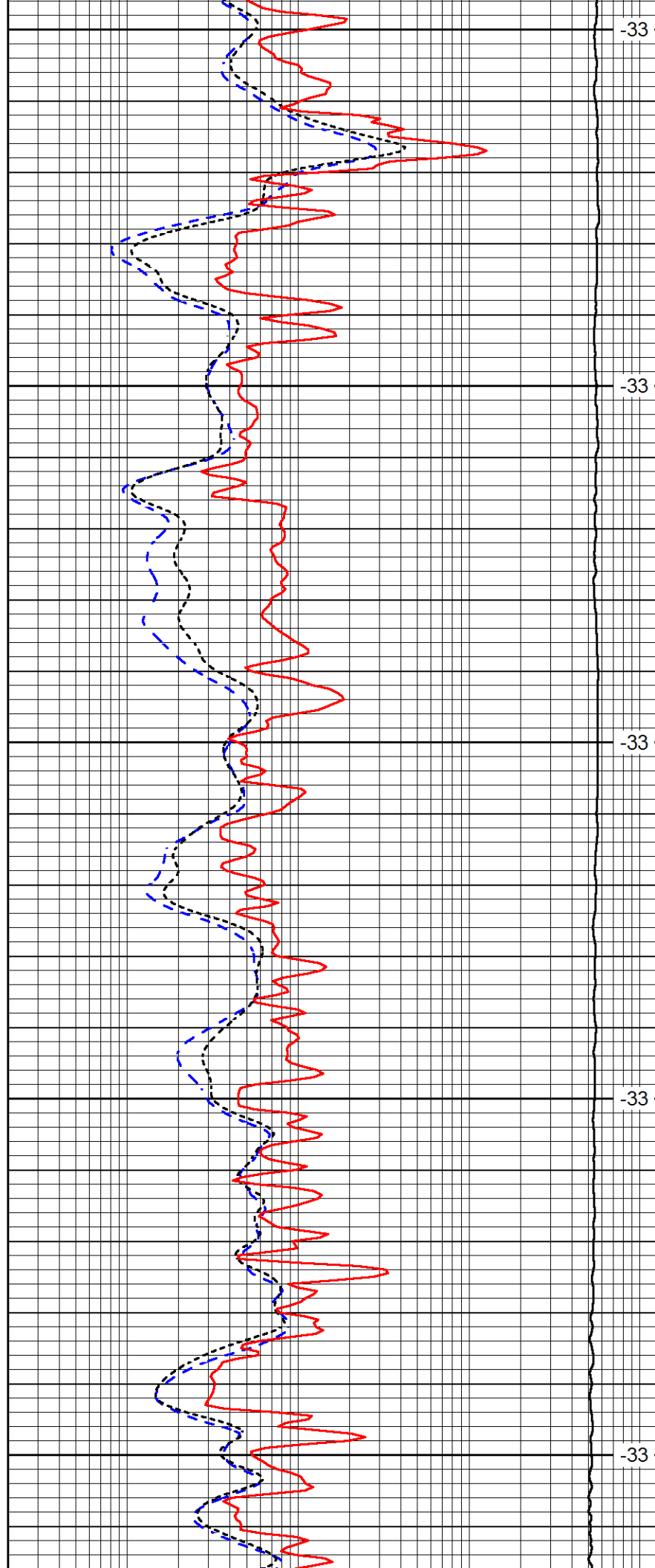
2850

2900

2950

3000

3050



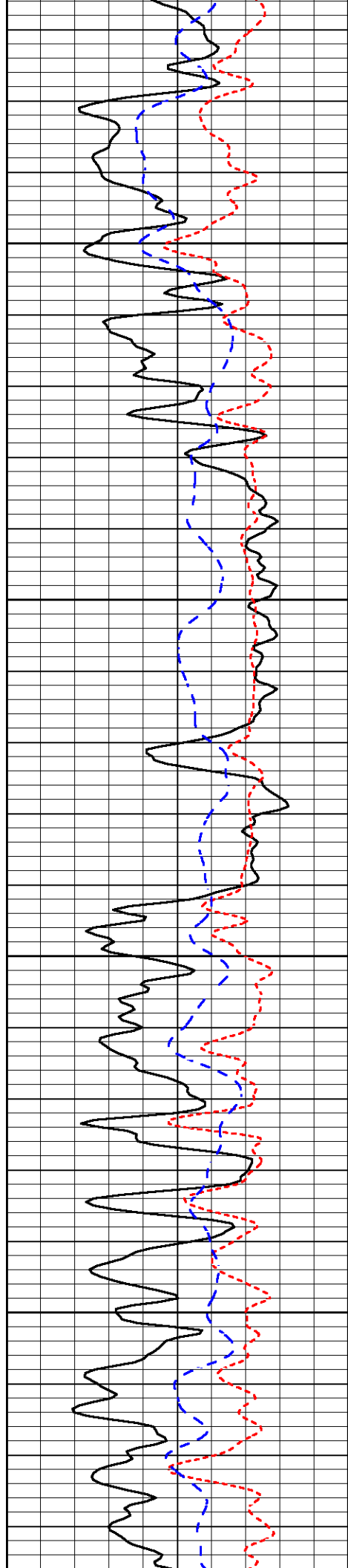
-33

-33

-33

-33

-33

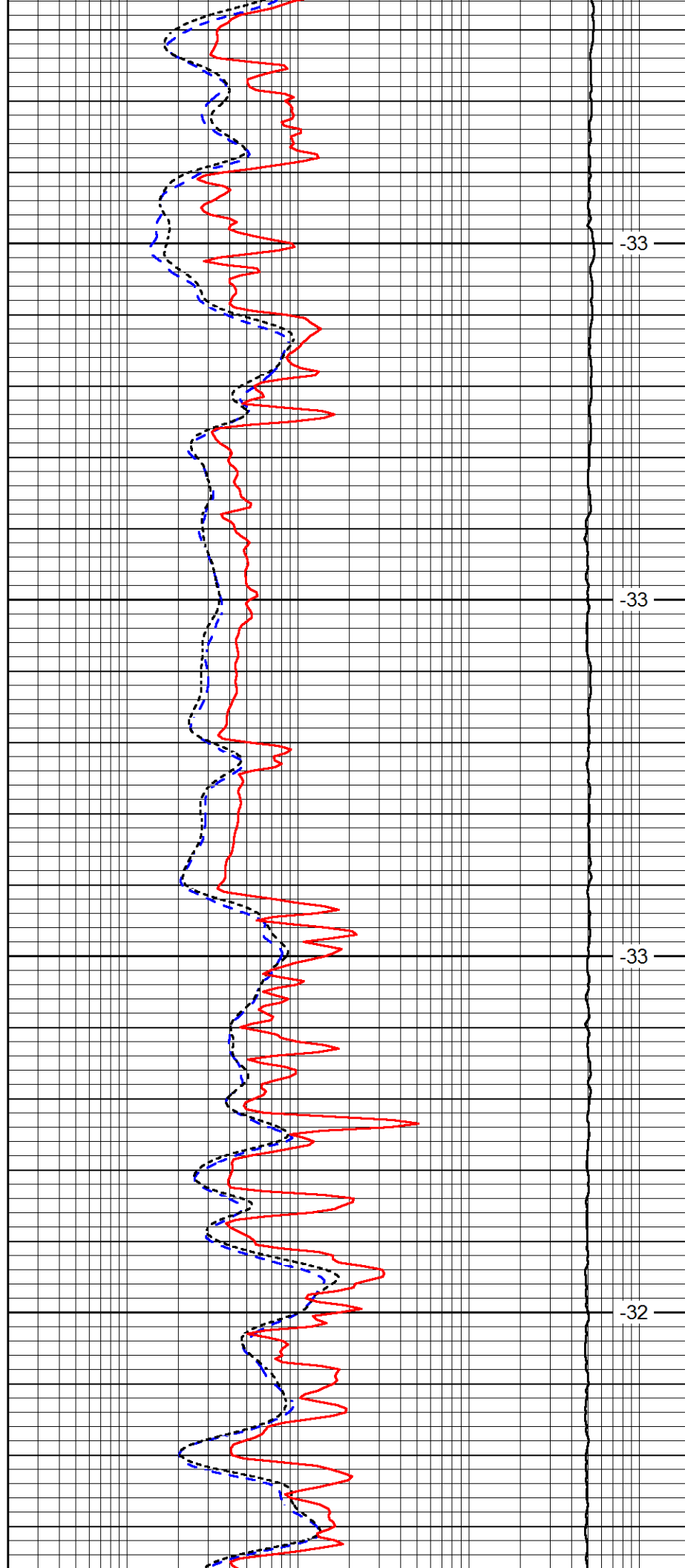


3100

3150

3200

3250

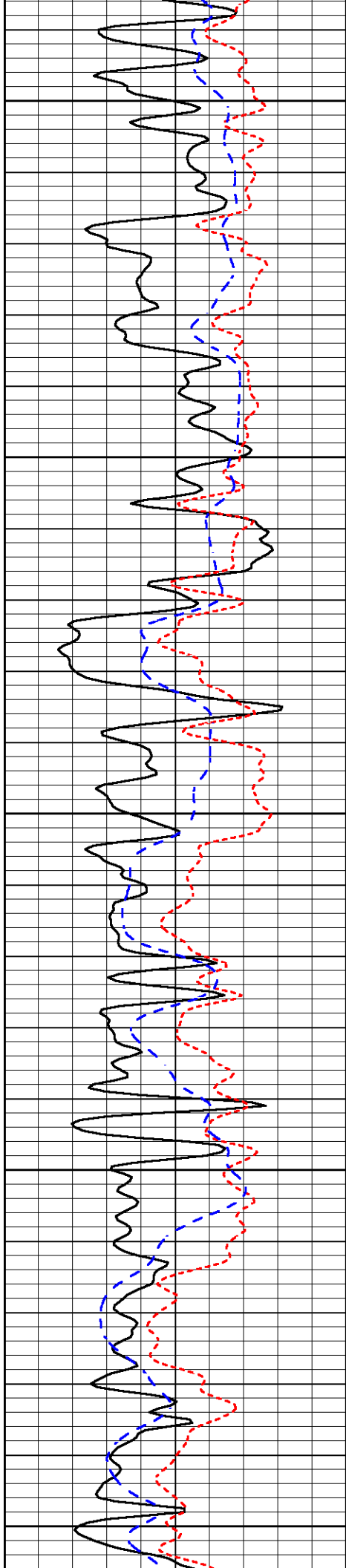


-33

-33

-33

-32



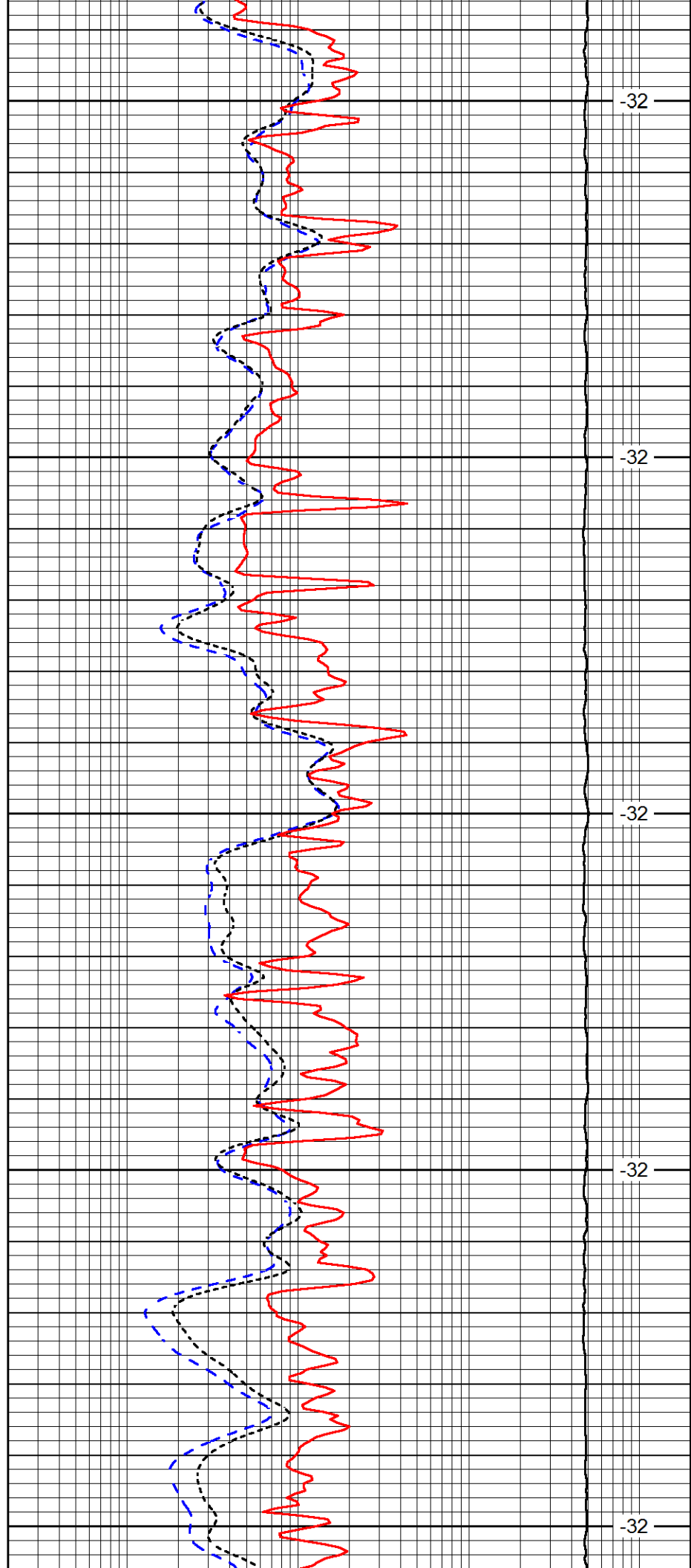
3300

3350

3400

3450

3500



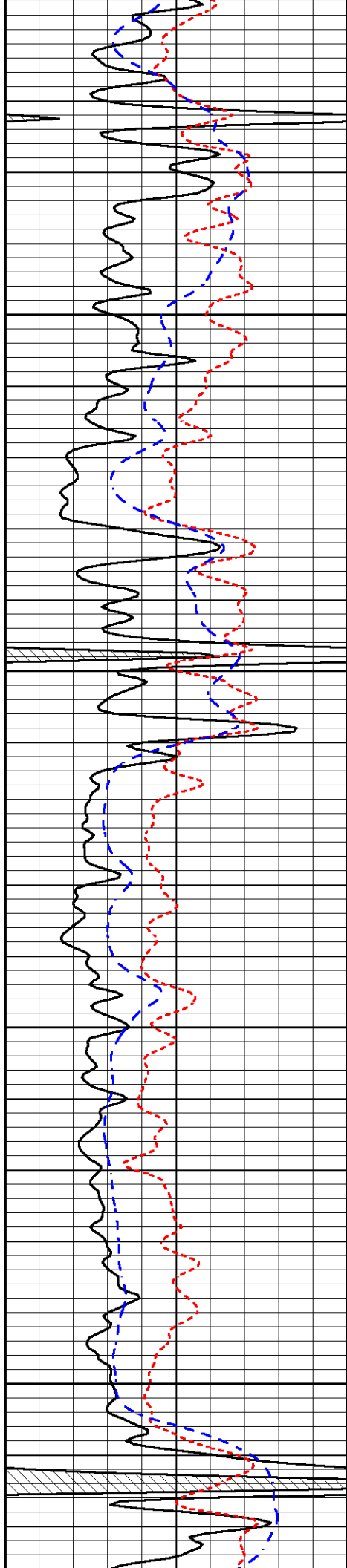
-32

-32

-32

-32

-32

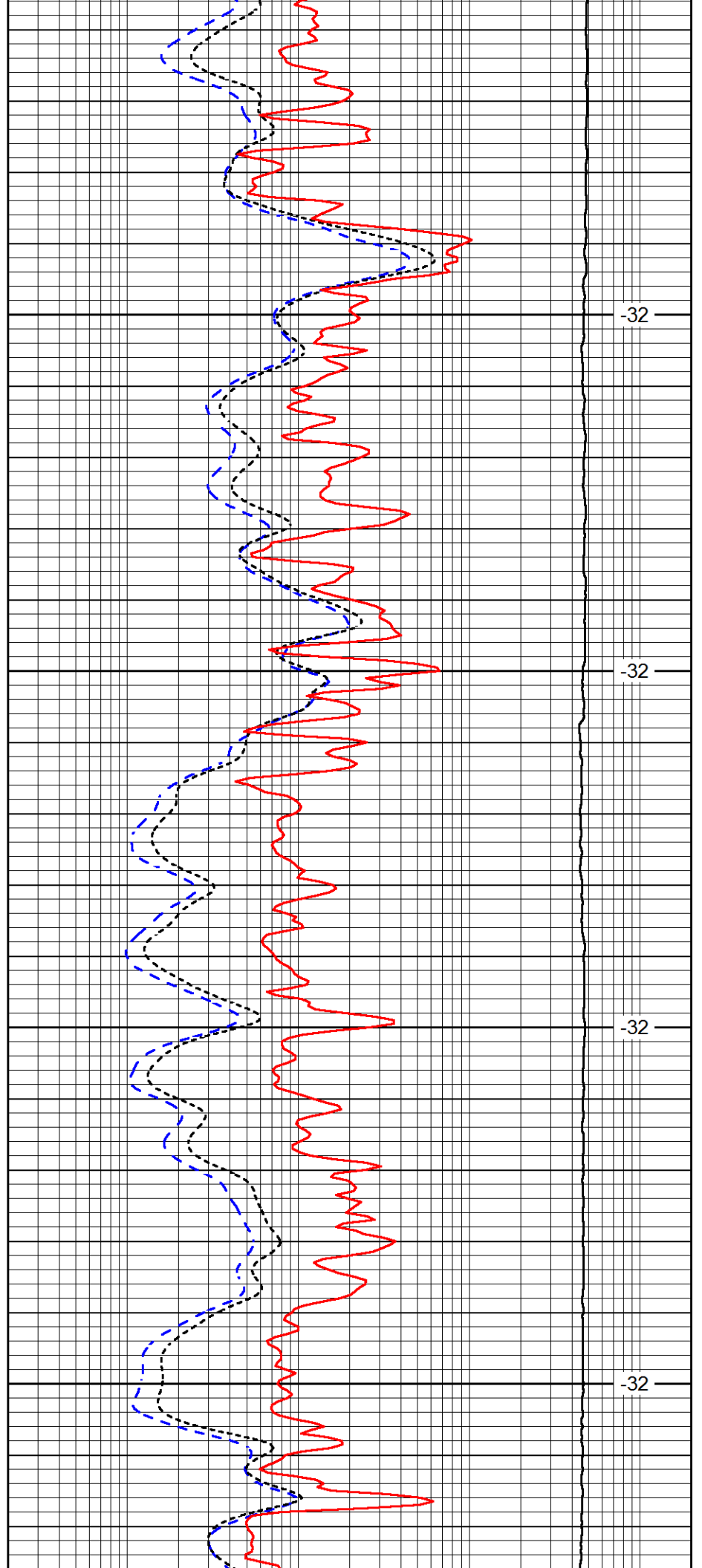


3550

3600

3650

3700

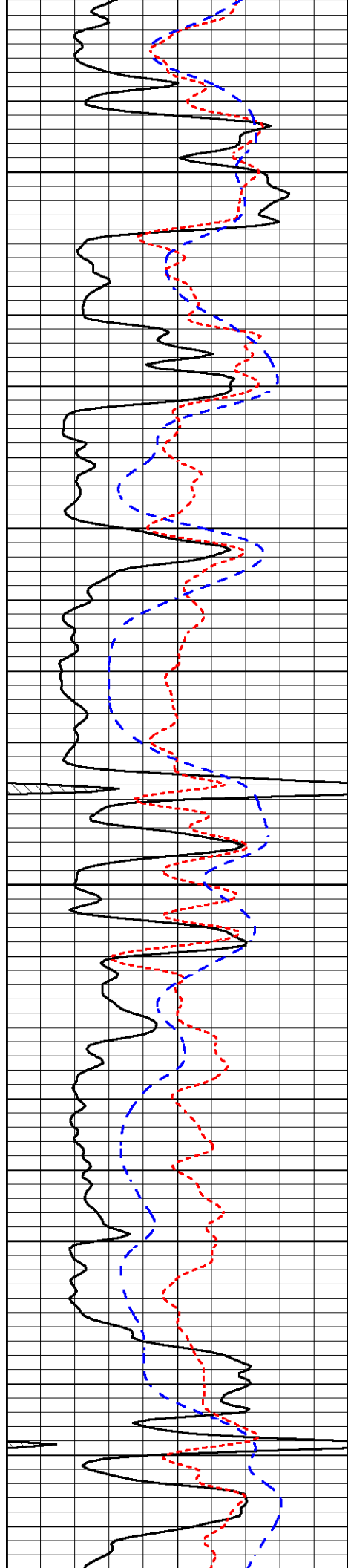


-32

-32

-32

-32

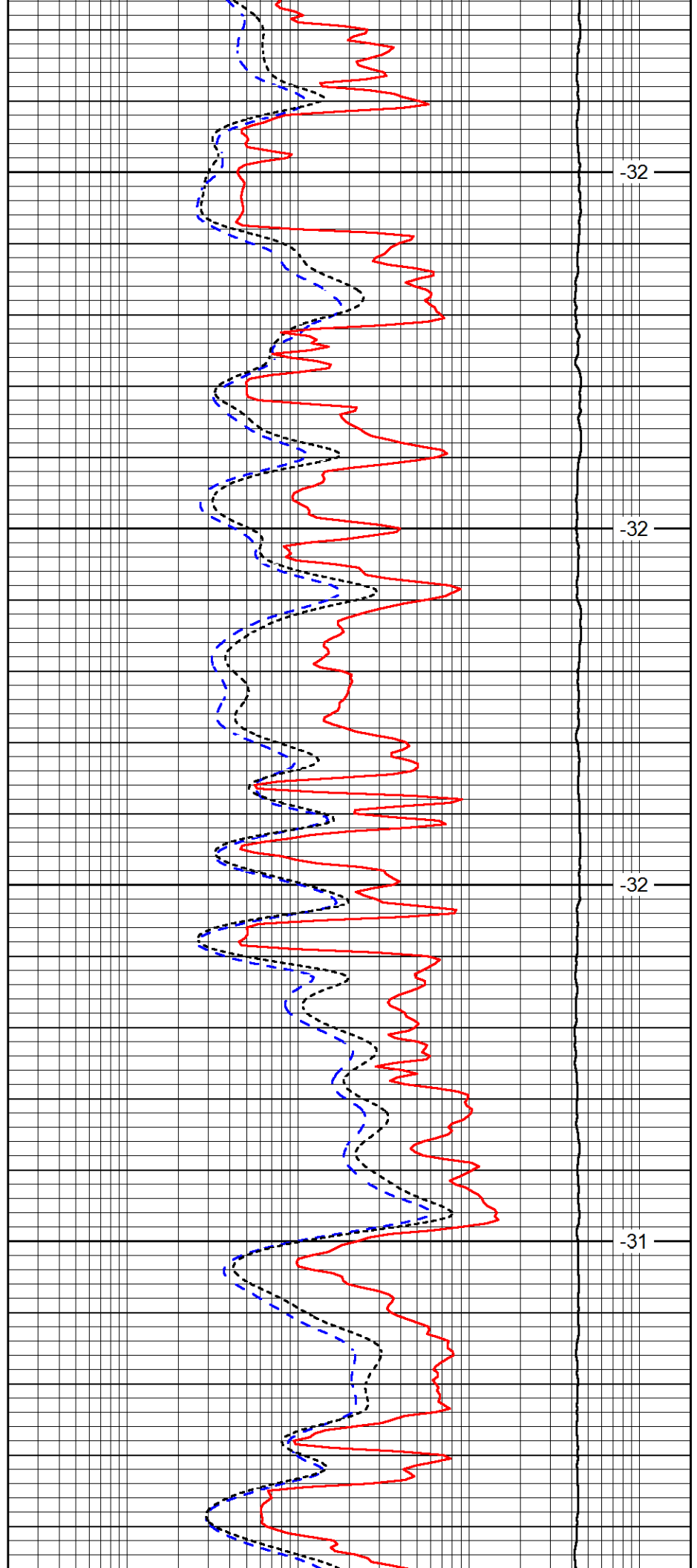


3750

3800

3850

3900

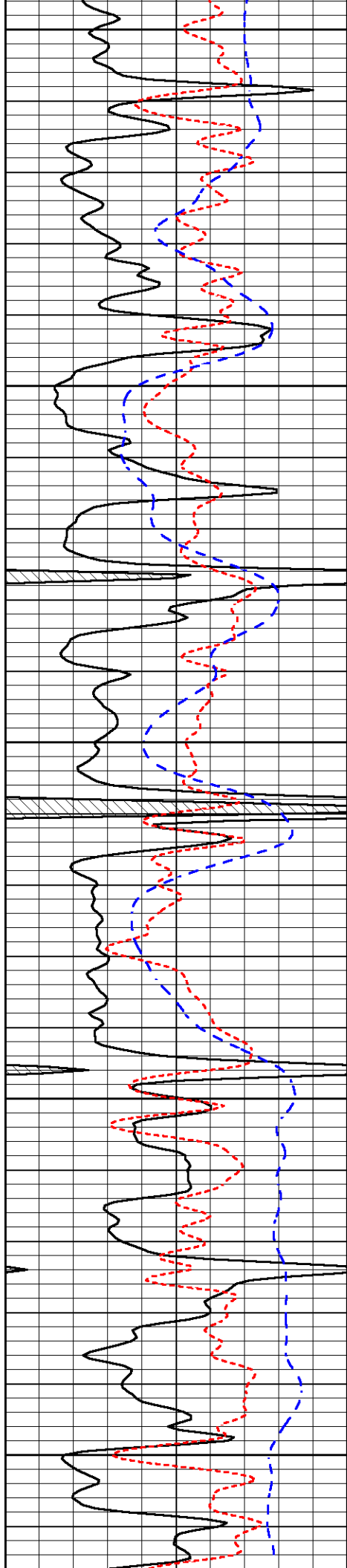


-32

-32

-32

-31



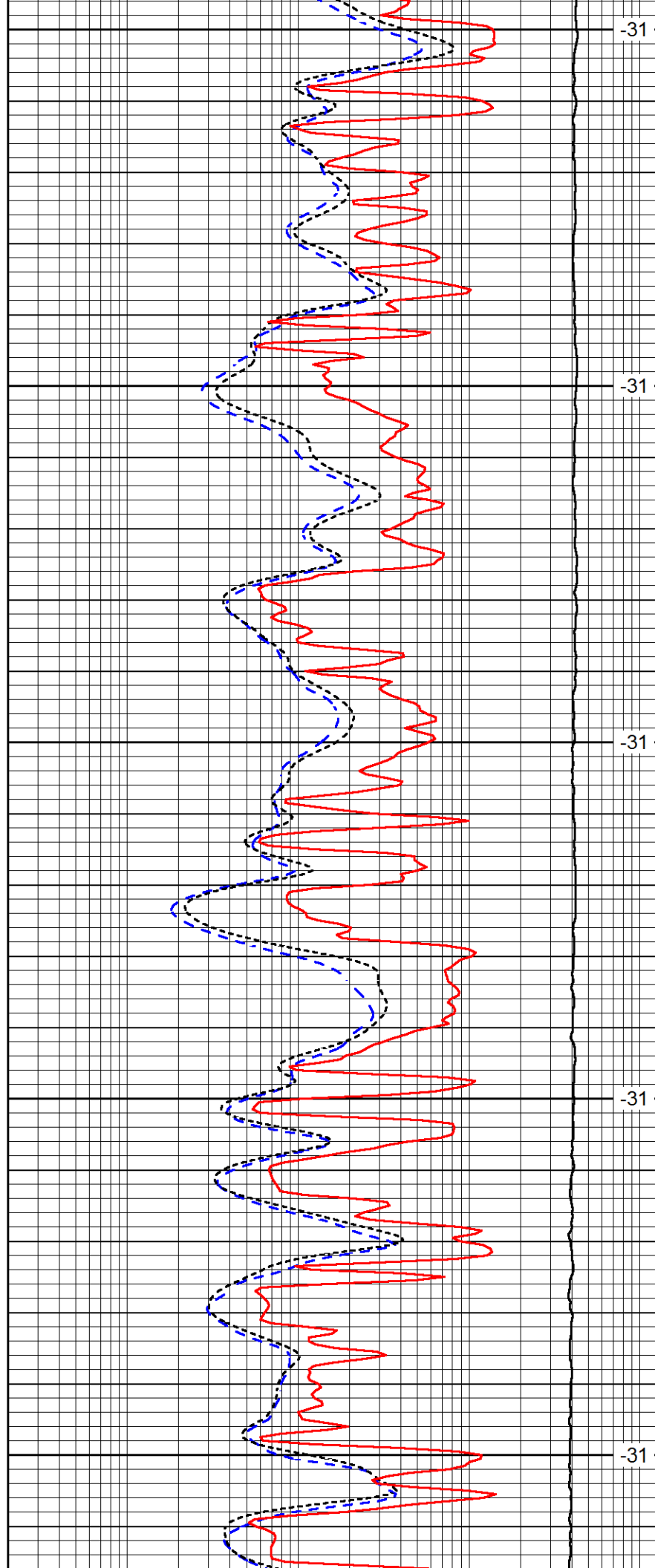
3950

4000

4050

4100

4150



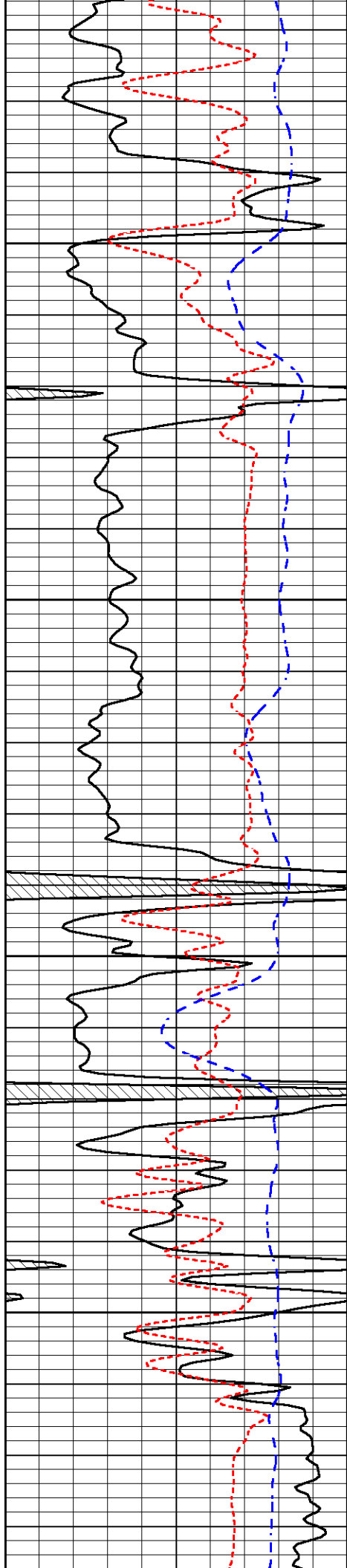
-31

-31

-31

-31

-31

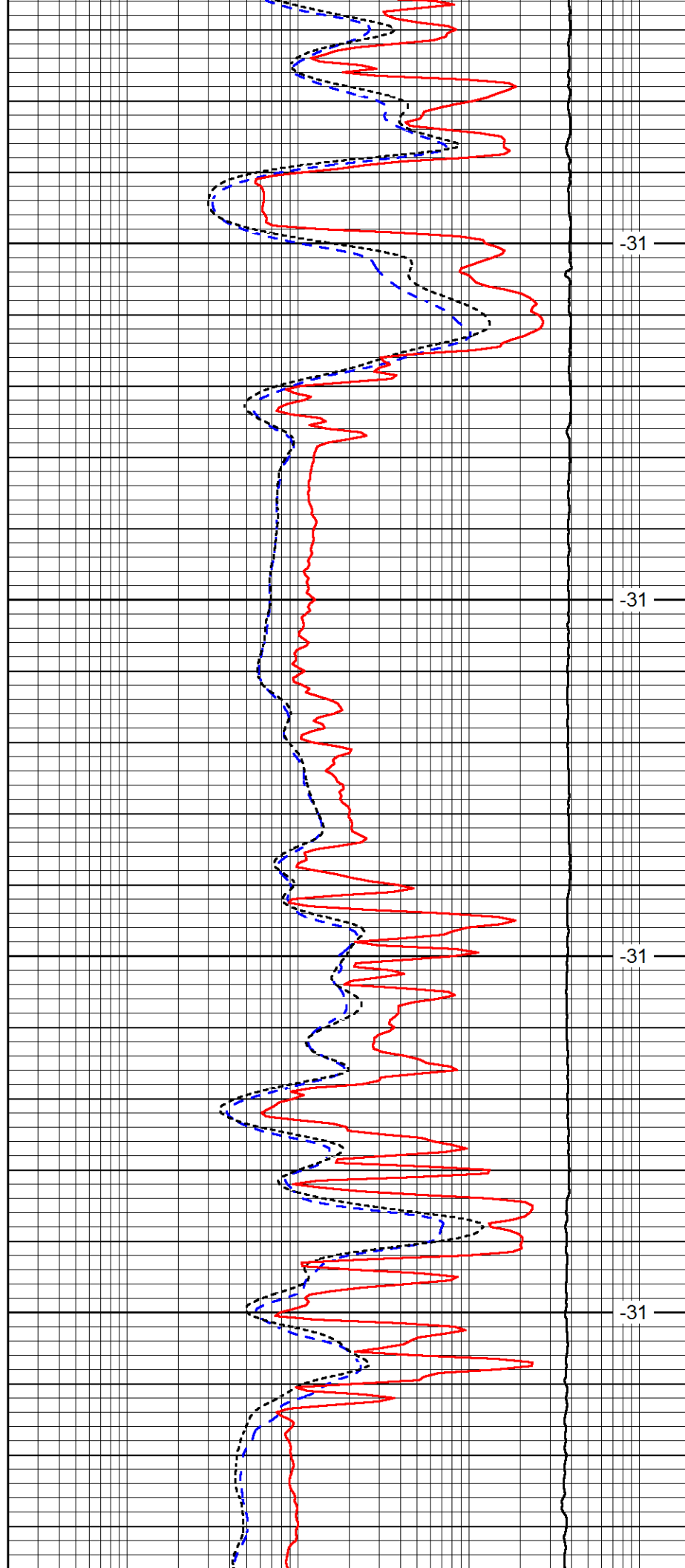


4200

4250

4300

4350

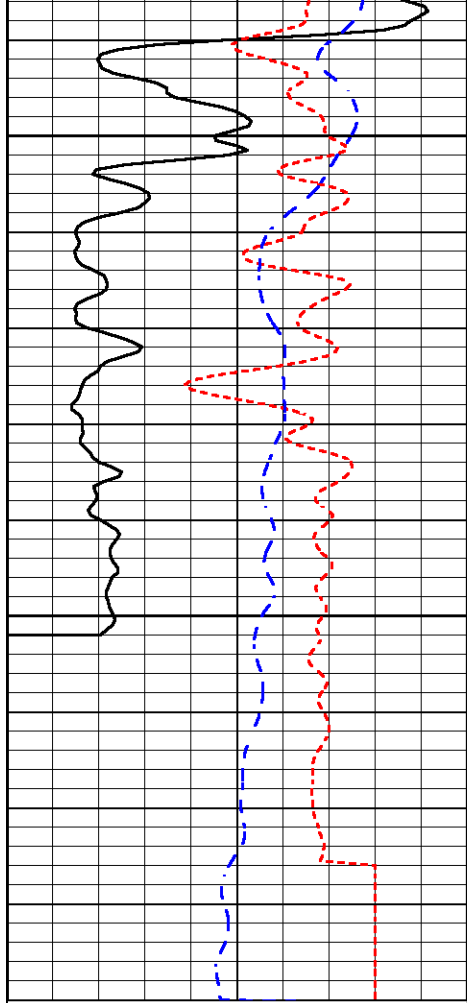


-31

-31

-31

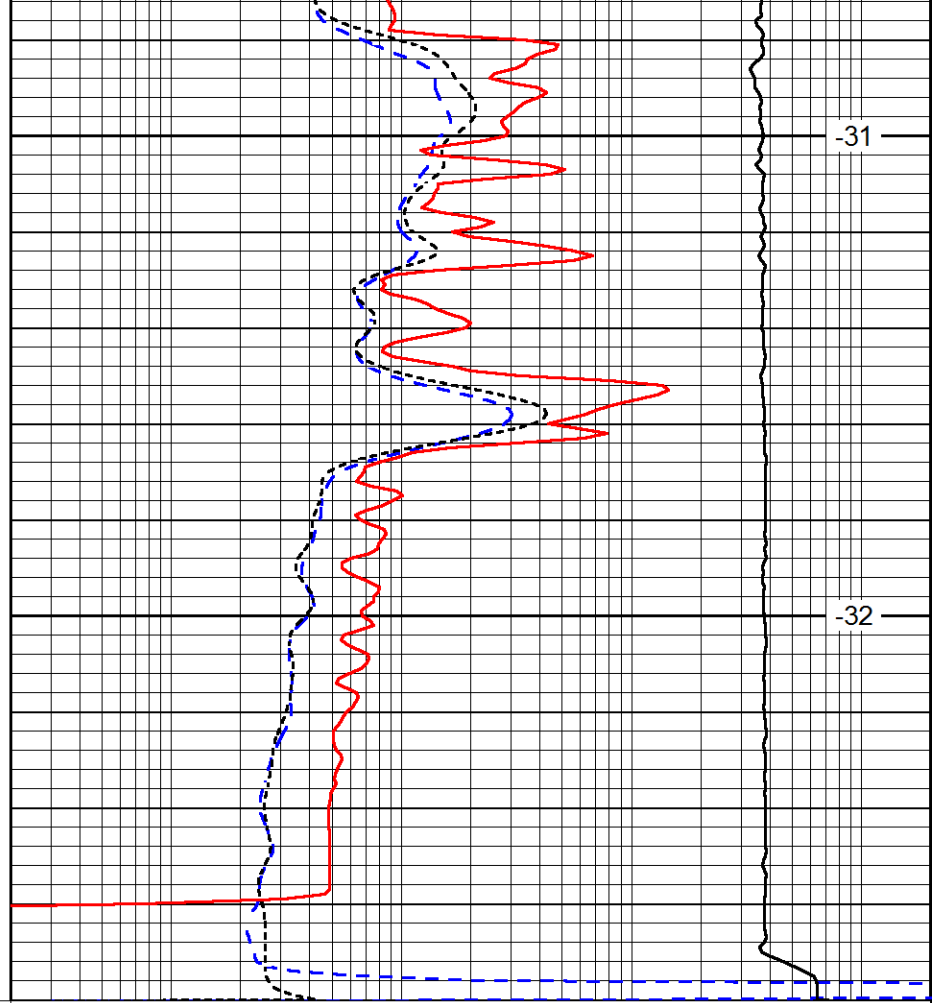
-31



4400

4450

0	Gamma Ray (GAPI)	150
-160	RxoRt	40
-200	SP (mV)	0



-31

-32

0.2	Deep Resistivity (Ohm-m)	2000
0.2	Medium Resistivity (Ohm-m)	2000
0.2	Shallow Resistivity (Ohm-m)	2000
10000	Line Tension (lb)	0

LSPD
(ft/min)