



**RADIATION  
GUARD  
LOG**

Company TRI UNITED INC.  
Well VINE-SOOK #4  
Field SOLOMON  
County ELLIS State KANSAS

Location: API #: 15-051-26872-0000  
1920' FNL & 1007' FEL  
SEC 26 TWP 11S RGE 19W  
Permanent Datum GROUND LEVEL Elevation 2064  
Log Measured From KELLY BUSHING 6' A.G.L  
Drilling Measured From KELLY BUSHING  
Elevation  
K.B. 2071  
D.F. 2069  
G.L. 2064

Date	5/21/17	
Run Number	ONE	
Depth Driller	3605	
Depth Logger	3604	
Bottom Logged Interval	3602	
Top Log Interval	2800	
Casing Driller	8 5/8" @ 221'	
Casing Logger	219	
Bit Size	7 7/8	
Type Fluid in Hole	CHEMICAL MUD	3500 PPM
Density / Viscosity	9.2/60	
pH / Fluid Loss	10.5/6.8	
Source of Sample	FLOWLINE	
Rm @ Meas. Temp	1.0 @ 83F	
Rmt @ Meas. Temp	.75 @ 83F	
Rmc @ Meas. Temp	1.2 @ 83F	
Source of Rmf / Rmc	MEASUREMENT	
Rm @ BHT	.74 @ 112F	
Time Circulation Stopped	2 HOURS	
Time Logger on Bottom		
Maximum Recorded Temperature	112F	
Equipment Number	3802	
Location	HAYS, KANSAS	
Recorded By	JASON CAPPELLUCCI	
Witnessed By	EUGENE LEIKER	ROGER MOSES

<<< Fold Here >>>

All interpretations are opinions based on inferences from electrical or other measurements and we cannot and do not guarantee the accuracy or correctness of any interpretation, and we shall not, except in the case of gross or willful negligence on our part, be liable or responsible for any loss, costs, damages, or expenses incurred or sustained by anyone resulting from any interpretation made by any of our officers, agents or employees. These interpretations are also subject to our general terms and conditions set out in our current Price Schedule.

Comments

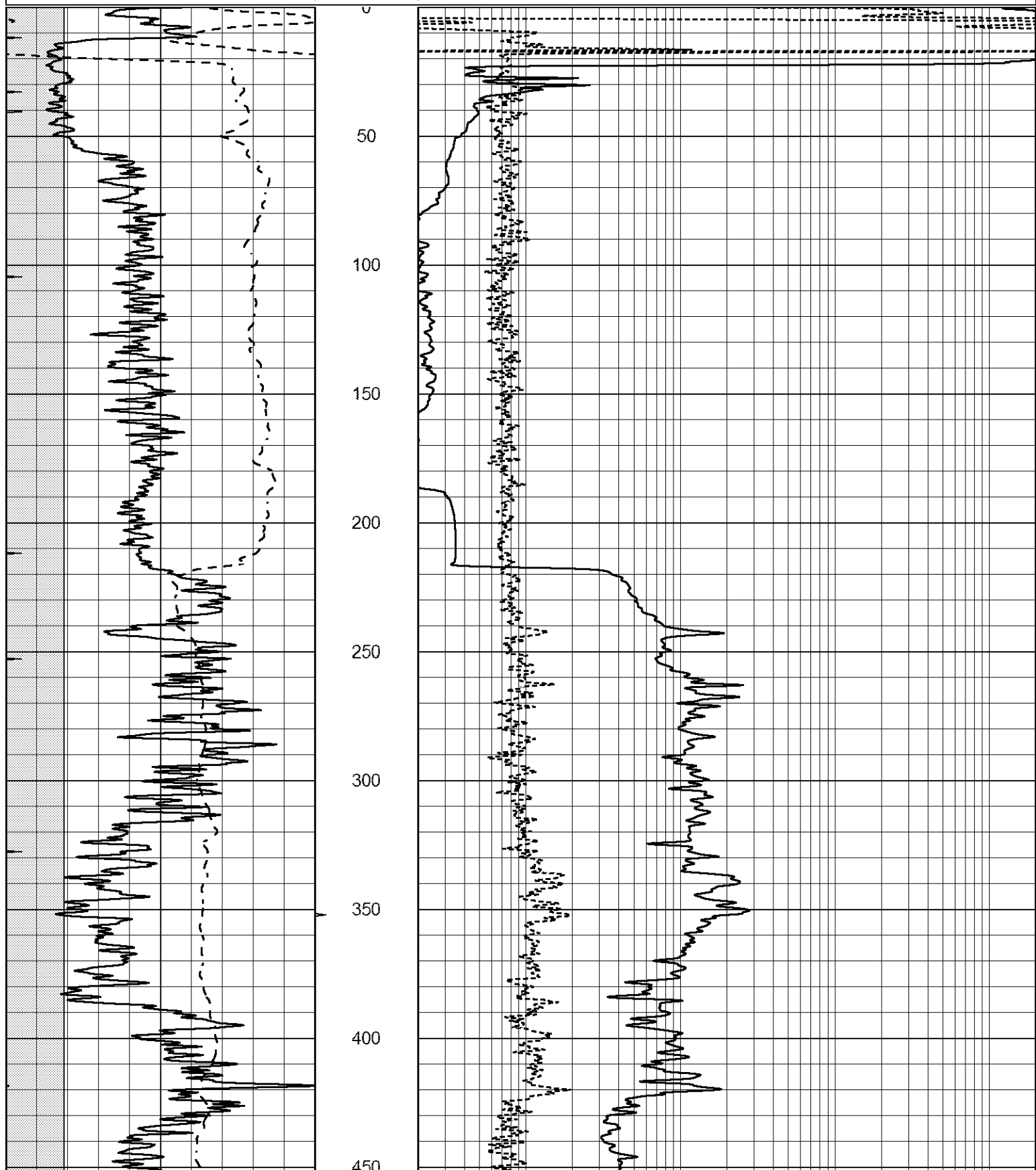
THANK YOU FOR USING ELI WIRELINE SERVICES, HAYS, KS. ( 785 ) 628-6395  
DIRECTIONS  
HAYS, KS. - NORTH TO BUCKEYE RD. - 4 WEST TO HYACINTH RD. - NORTH  
TO DEAD END, (TANK BATTERY) - WEST INTO

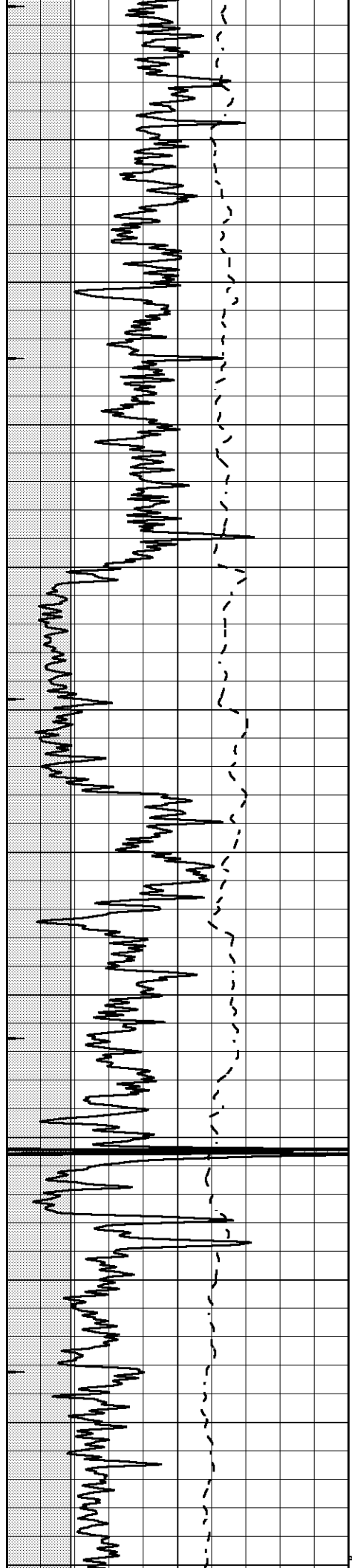


# MAIN SECTION

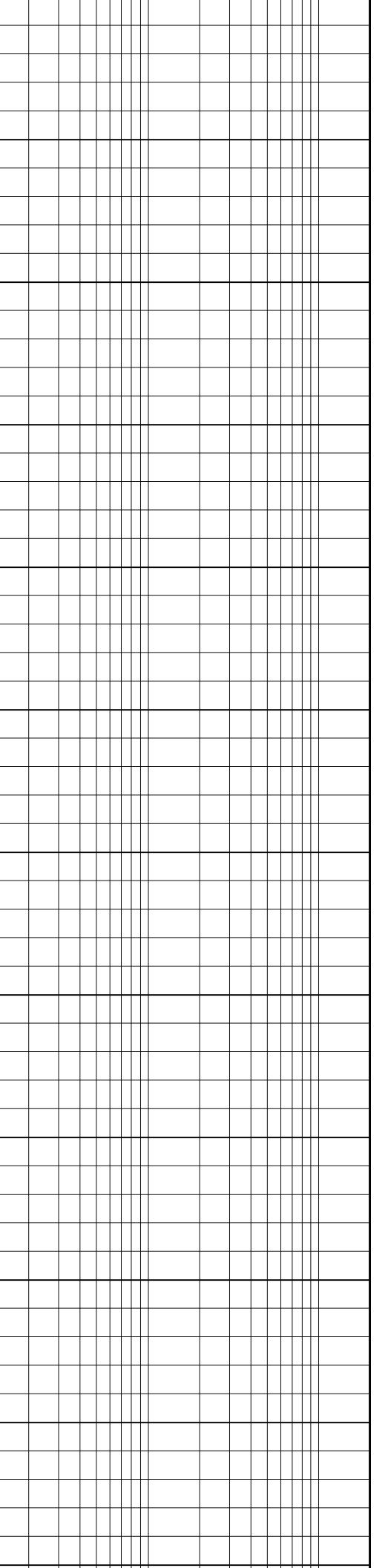
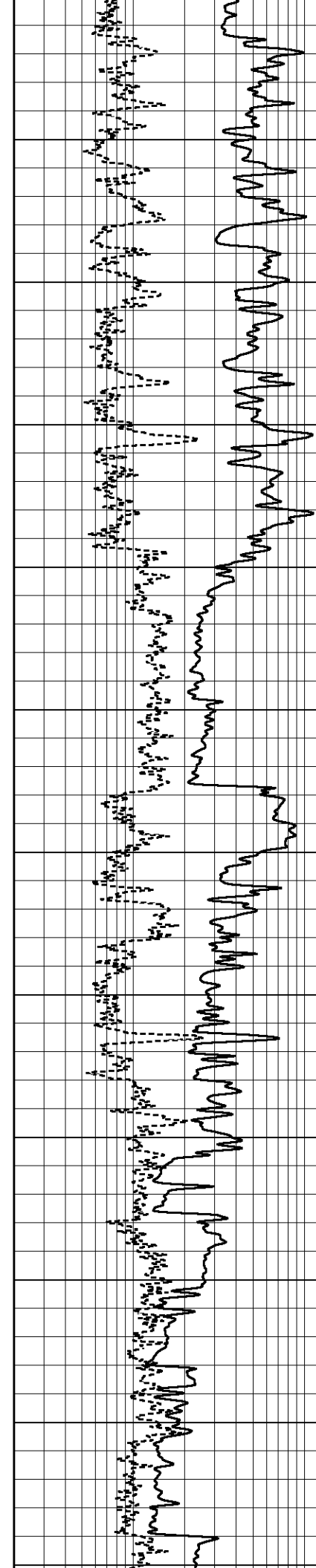
Database File 1143rag.db  
 Dataset Pathname pass3.3  
 Presentation Format \_ragstk  
 Dataset Creation Sun May 21 12:37:56 2017  
 Charted by Depth in Feet scaled 1:600

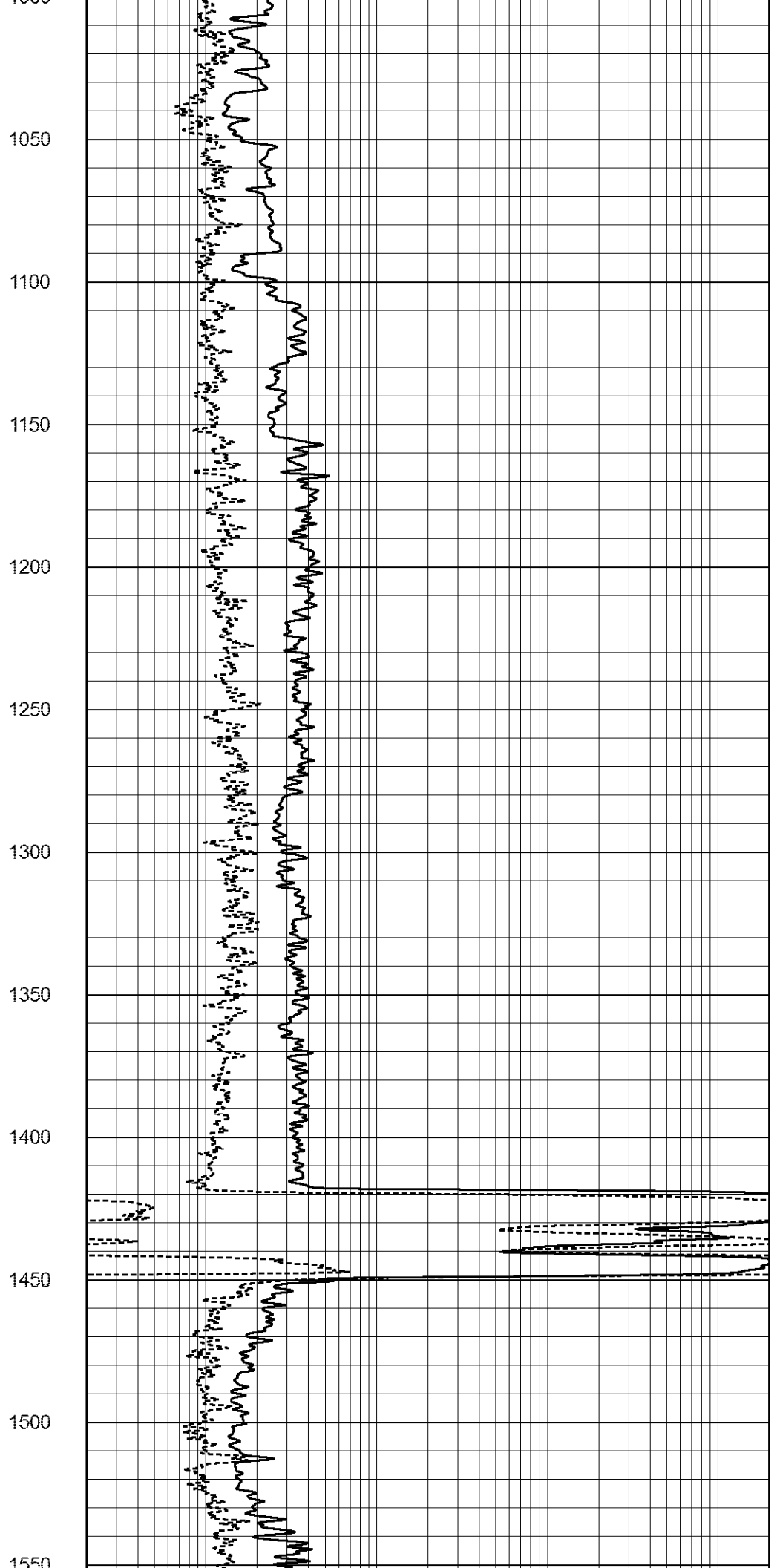
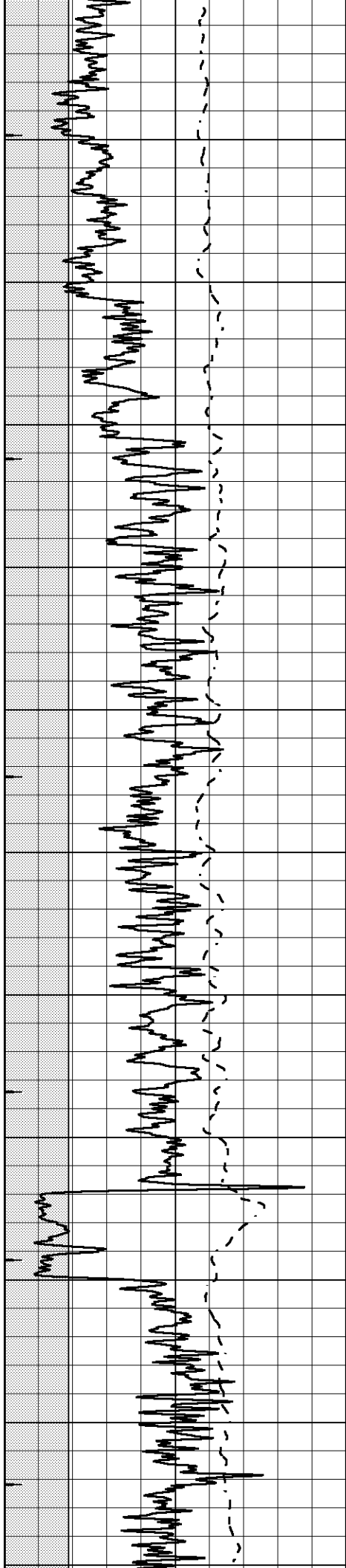
0	GAMMA RAY (GAPI)	150	ABHV		GUARD
6	CALIPER (in)	16	10 (ft3)	0	NEUTRON
-100	SP (mV)	100	TBHV		
			0 (ft3)	10	

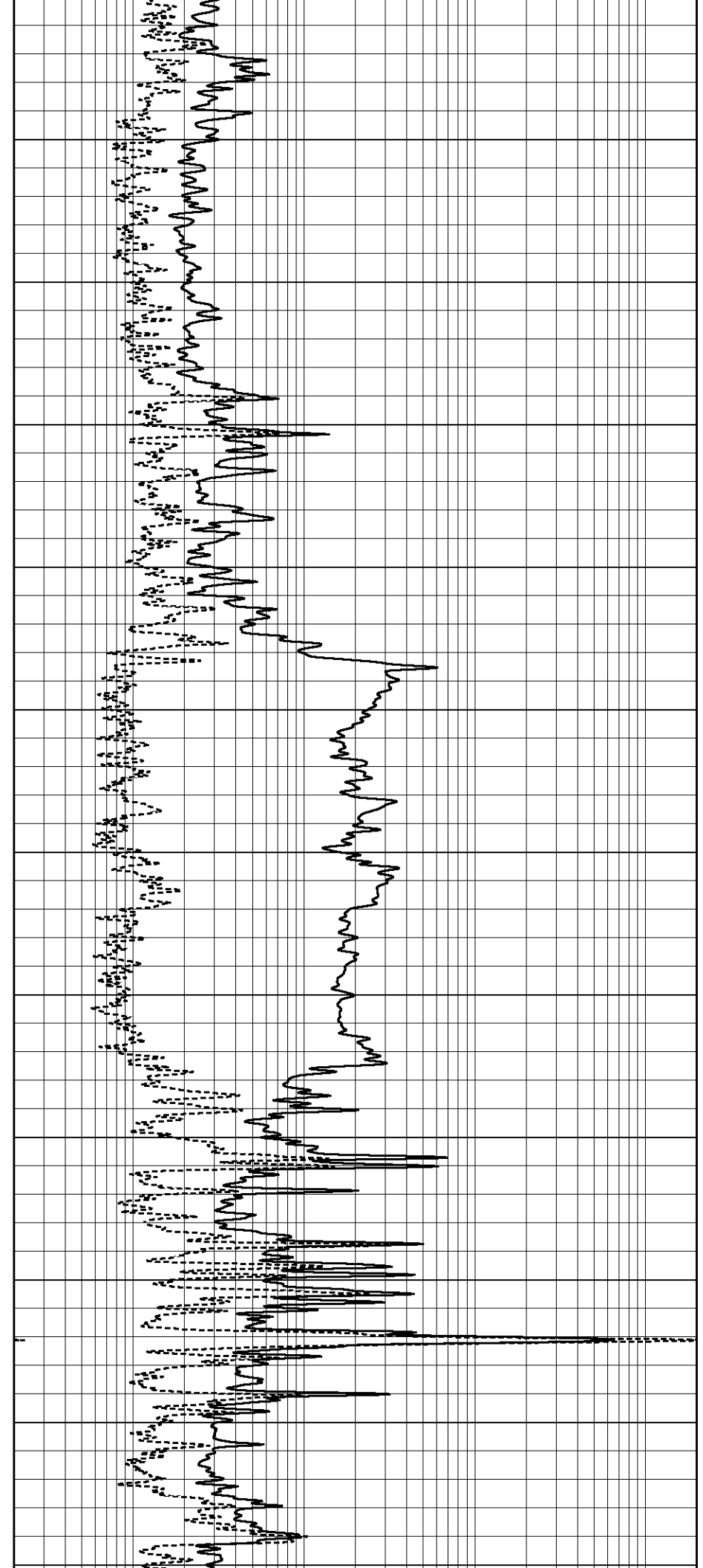
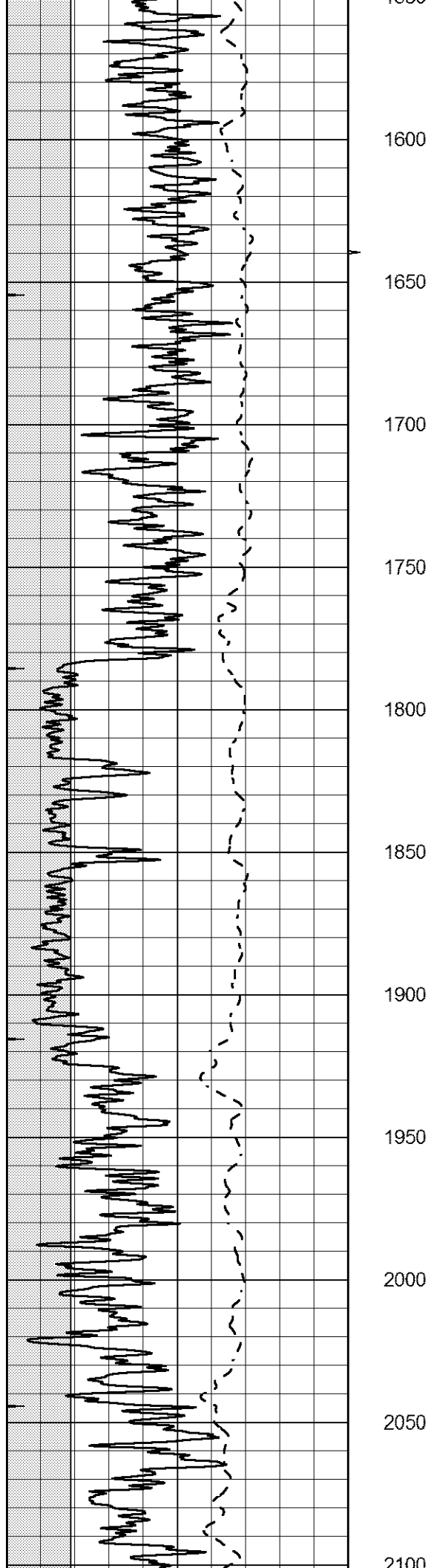


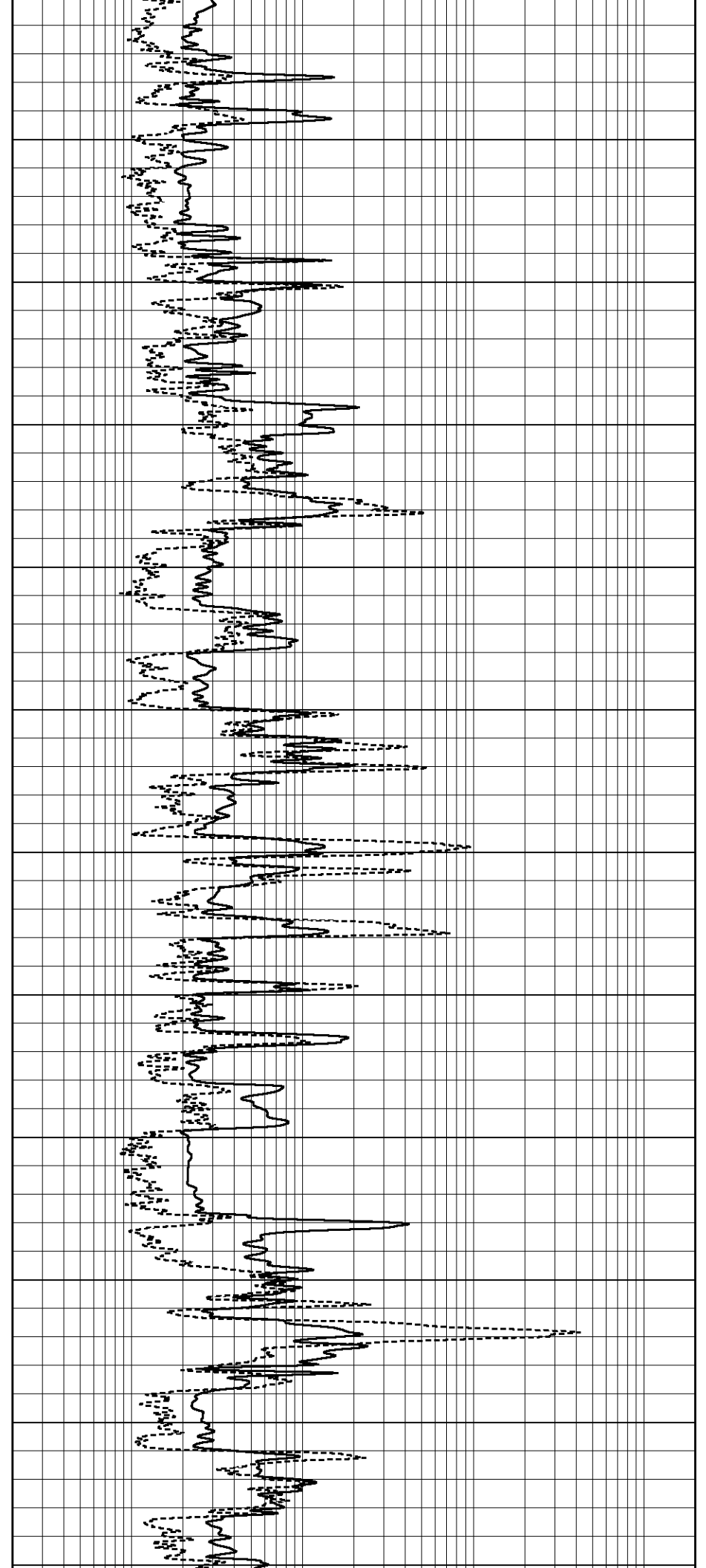
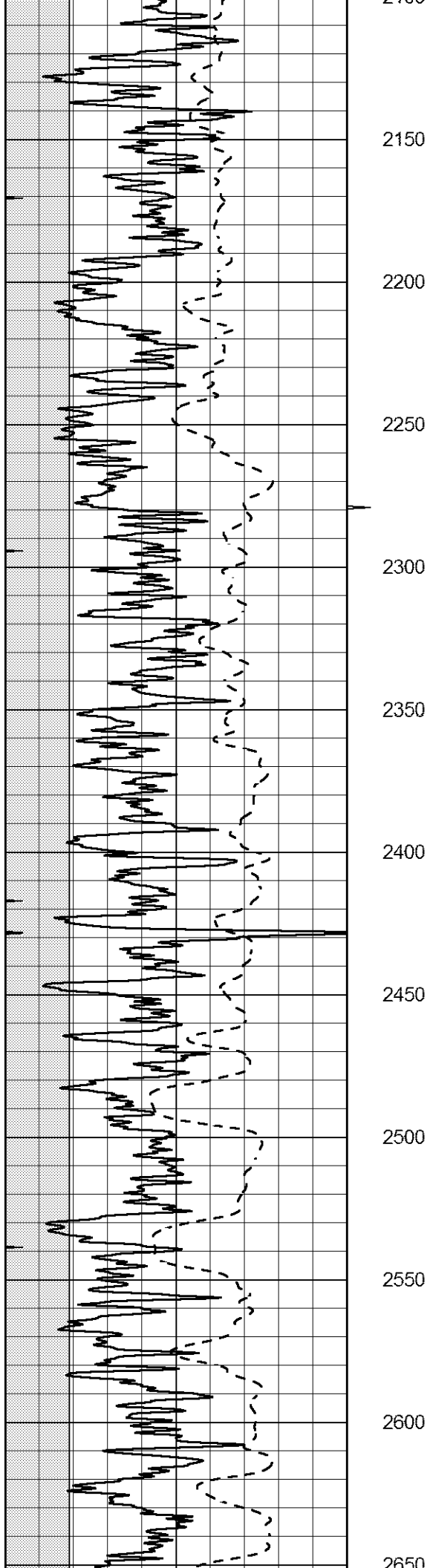


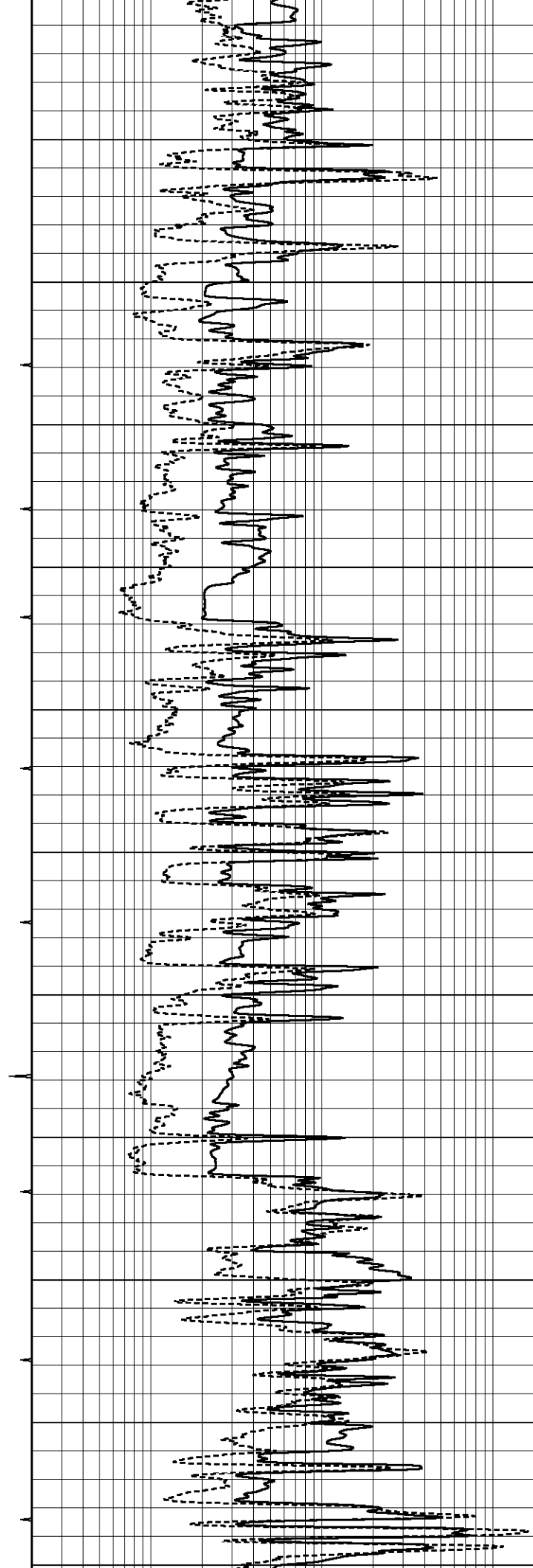
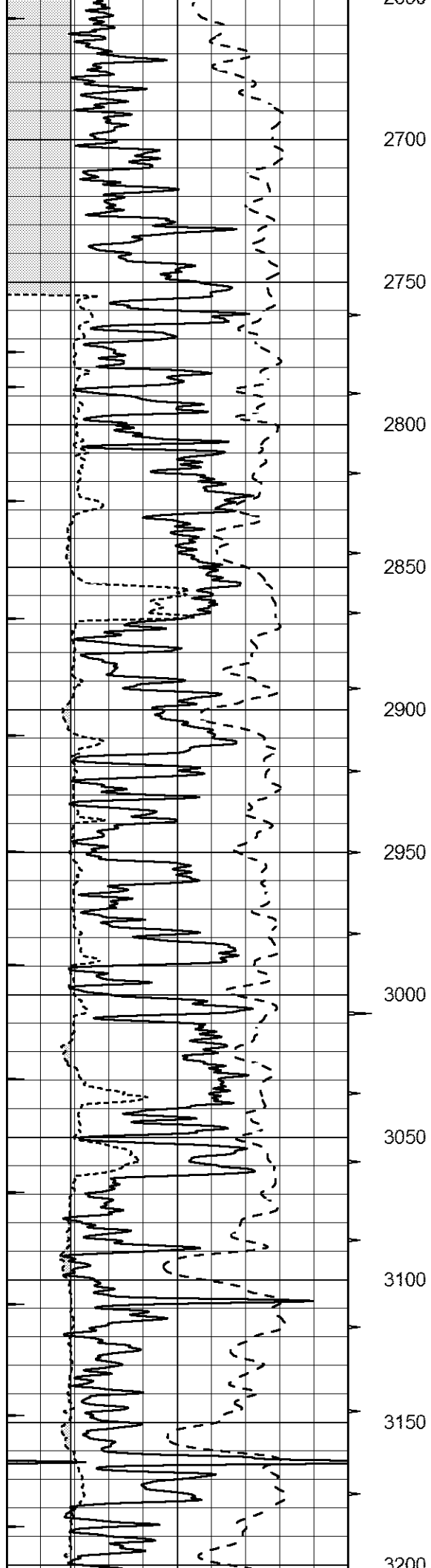
100  
500  
550  
600  
650  
700  
750  
800  
850  
900  
950  
1000

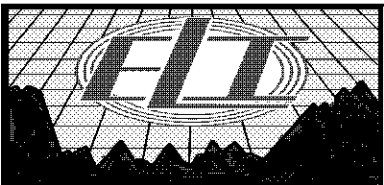
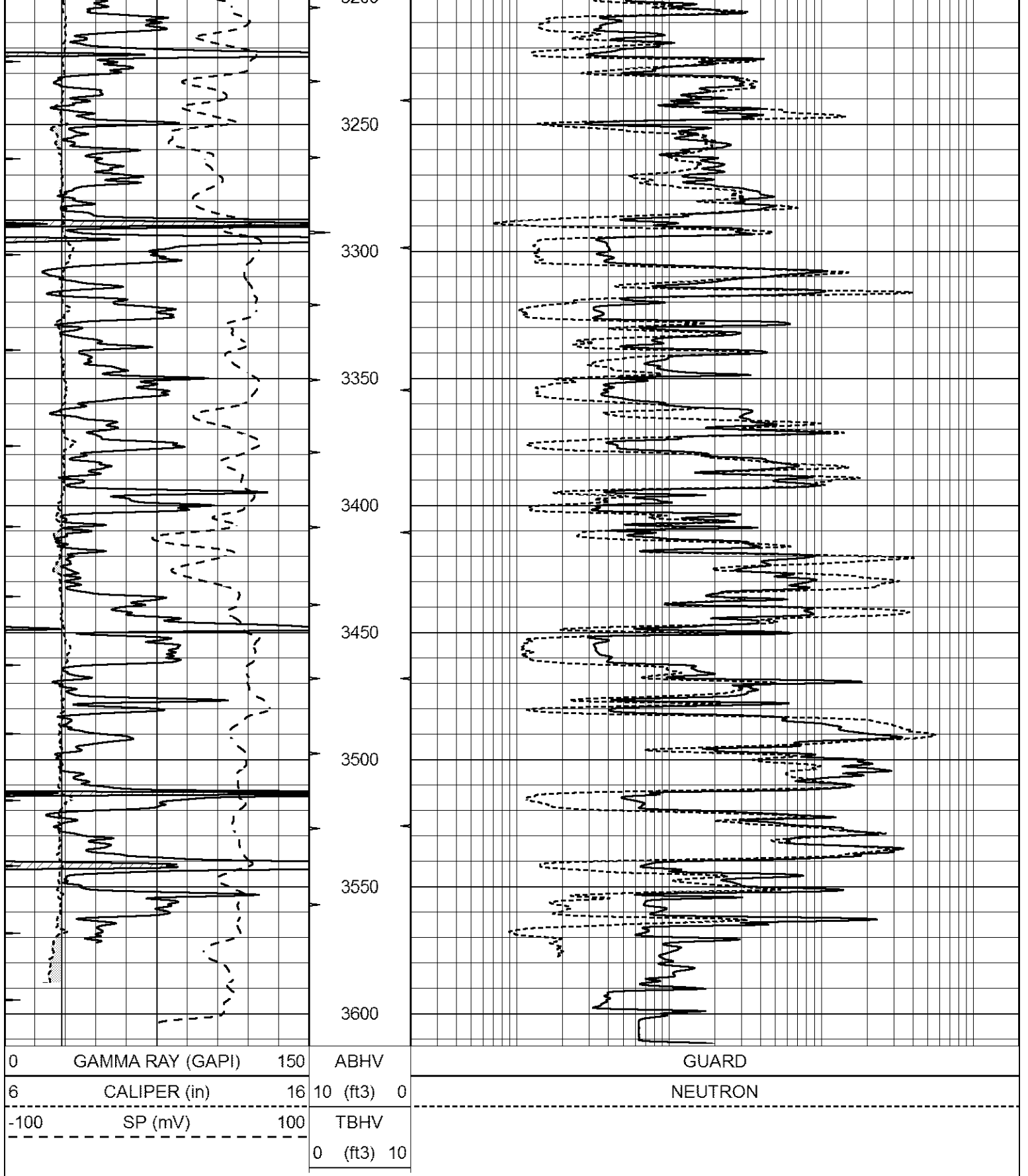








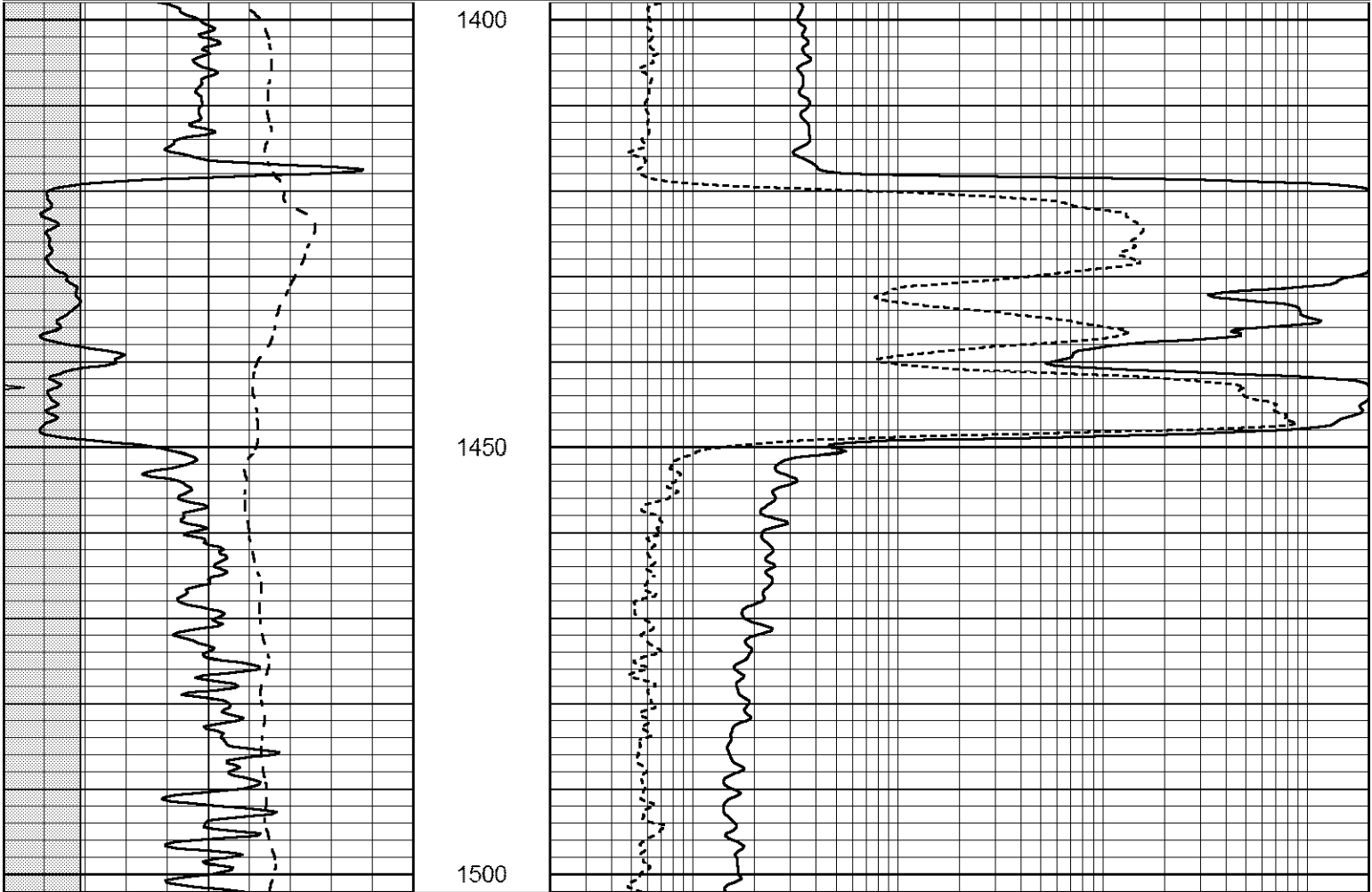




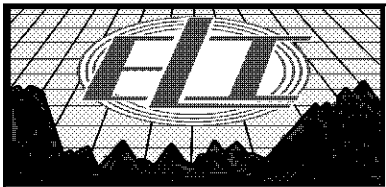
# ANHYDRITE

Database File 1143rag.db  
 Dataset Pathname pass3.2  
 Presentation Format ragstk

0	GAMMA RAY (GAPI)	150	ABHV	GUARD	
6	CALIPER (in)	16	10 (ft3) 0	NEUTRON	
-100	SP (mV)	100	TBHV		
			0 (ft3) 10		

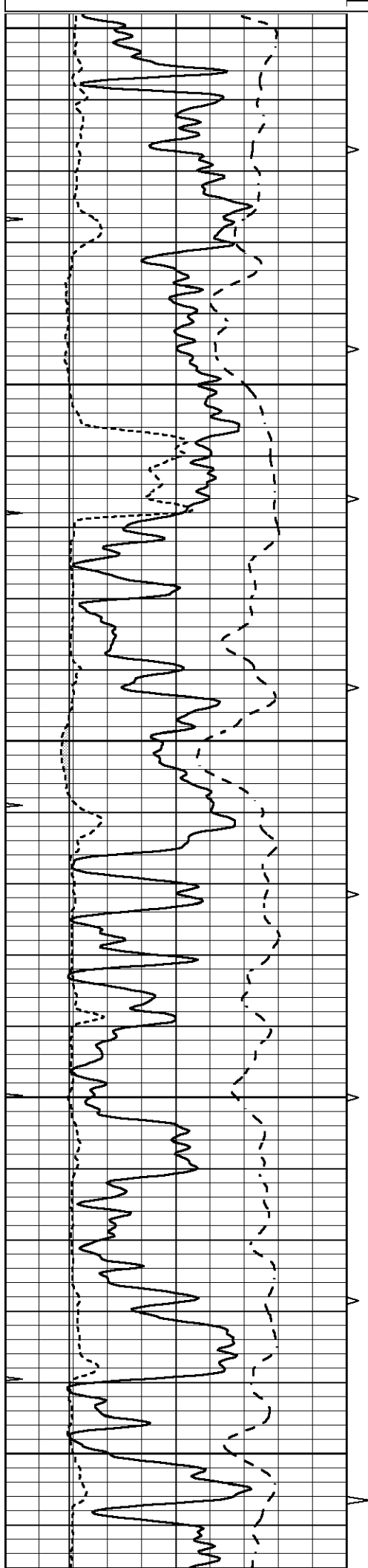


0	GAMMA RAY (GAPI)	150	ABHV	GUARD	
6	CALIPER (in)	16	10 (ft3) 0	NEUTRON	
-100	SP (mV)	100	TBHV		
			0 (ft3) 10		



# MAIN SECTION

0	GAMMA RAY (GAPI)	150	ABHV	GUARD	
6	CALIPER (in)	16	10 (ft3) 0	NEUTRON	
-100	SP (mV)	100	TBHV		
			0 (ft3) 10		



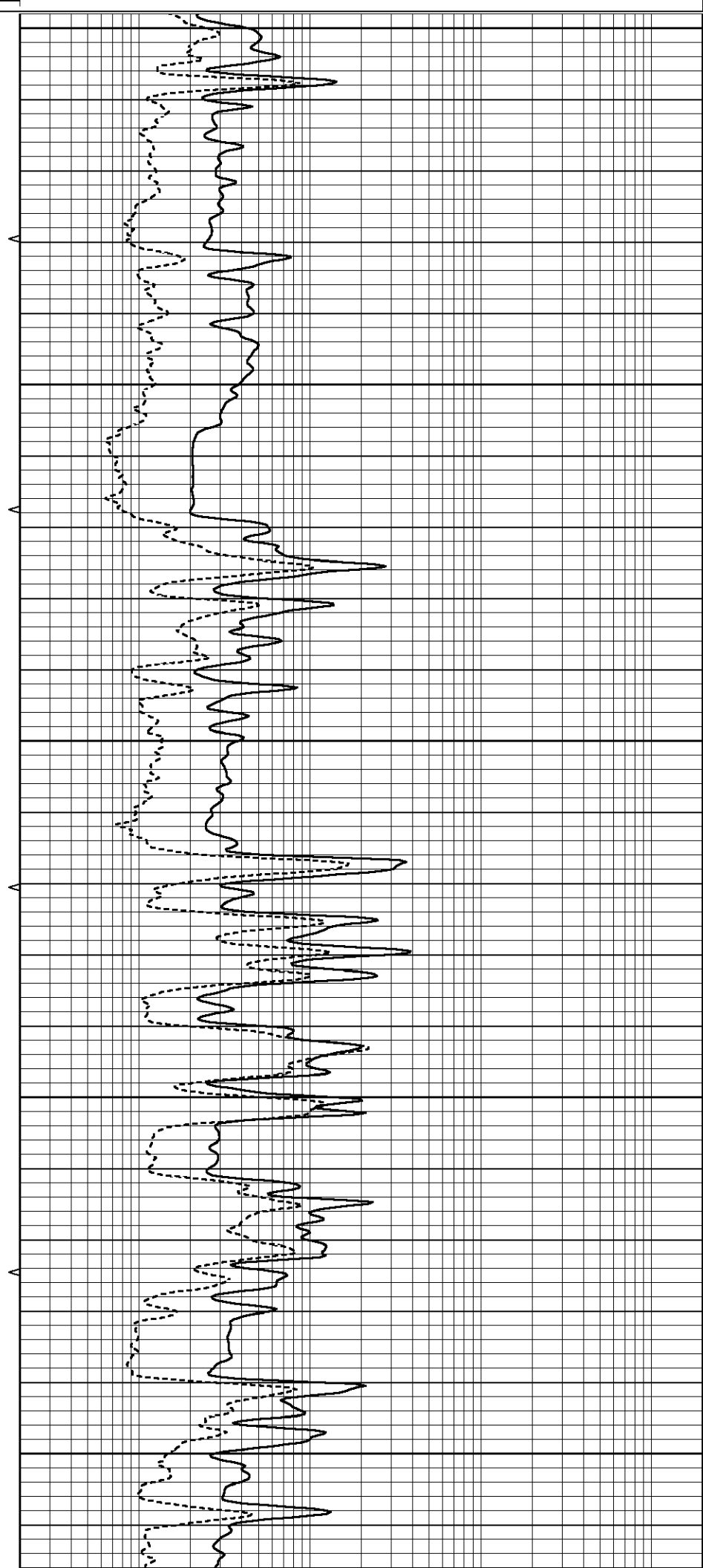
2800

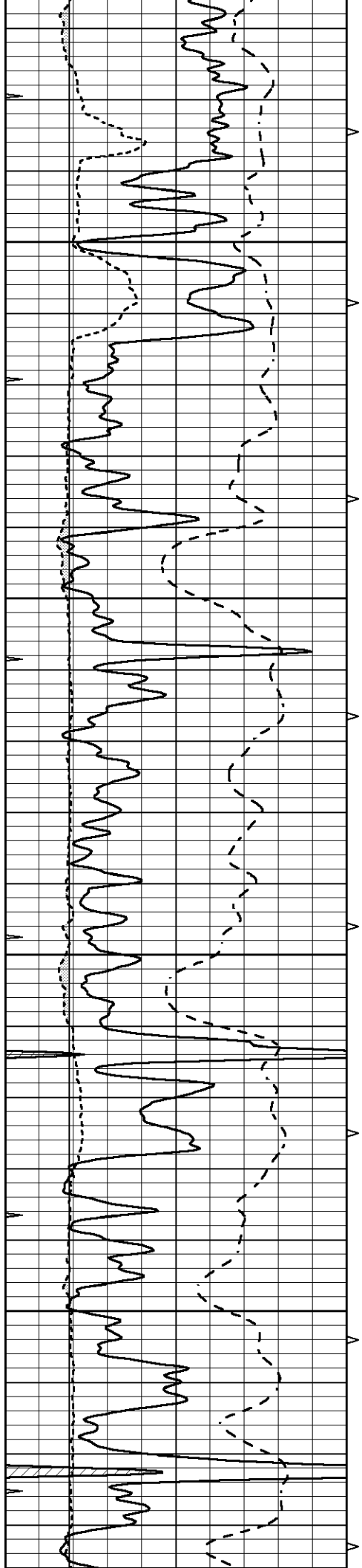
2850

2900

2950

3000



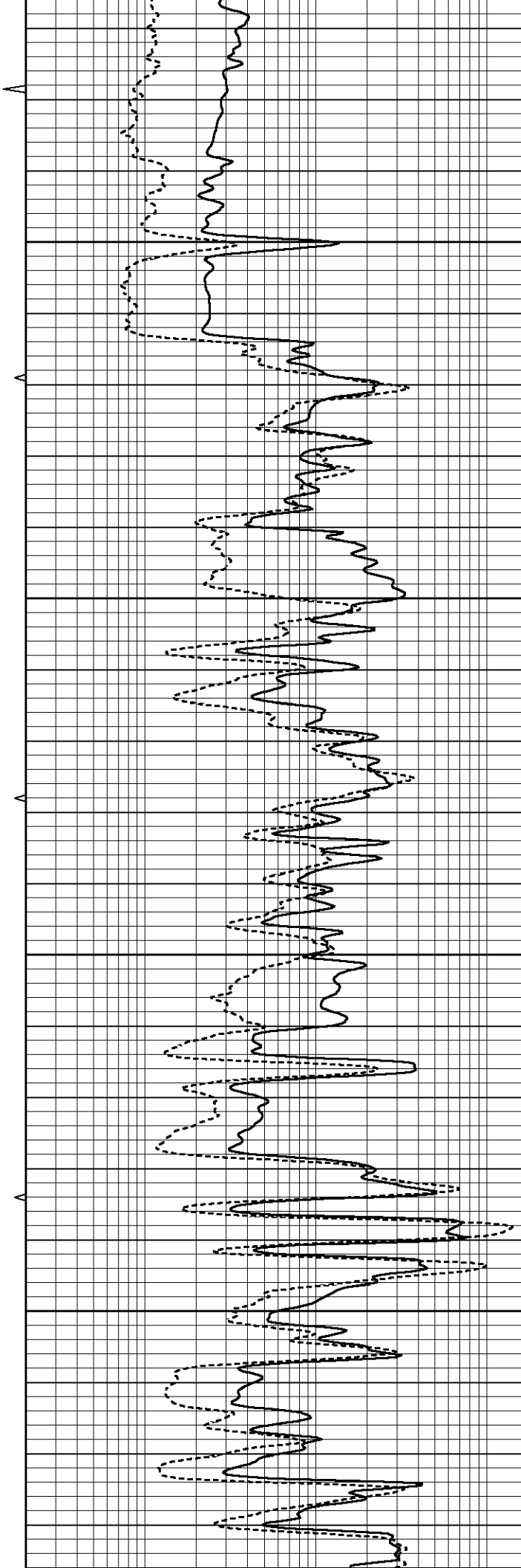


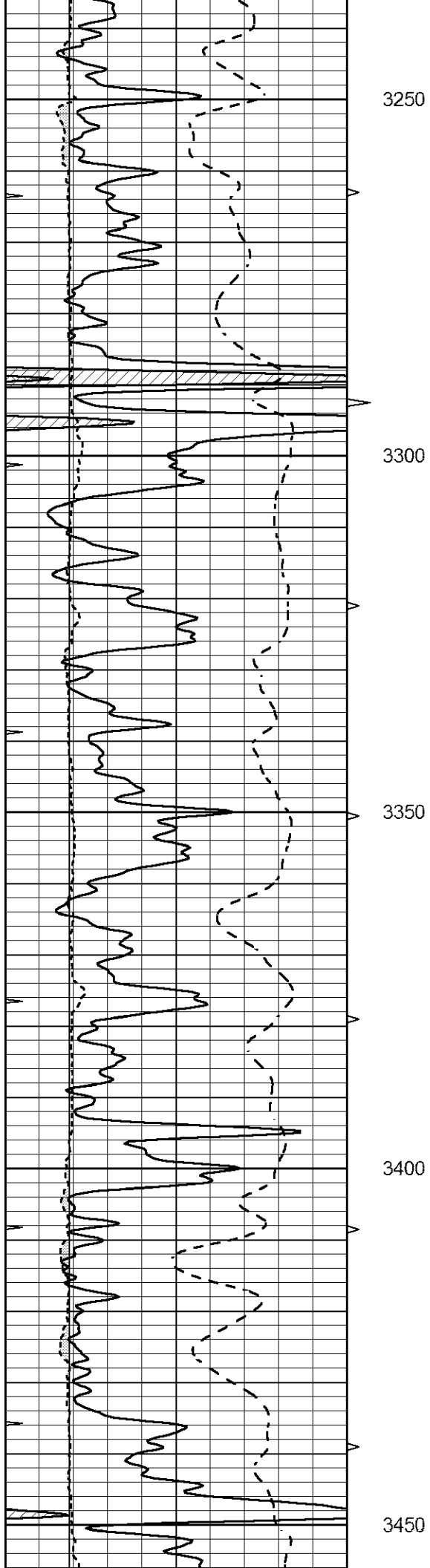
3050

3100

3150

3200





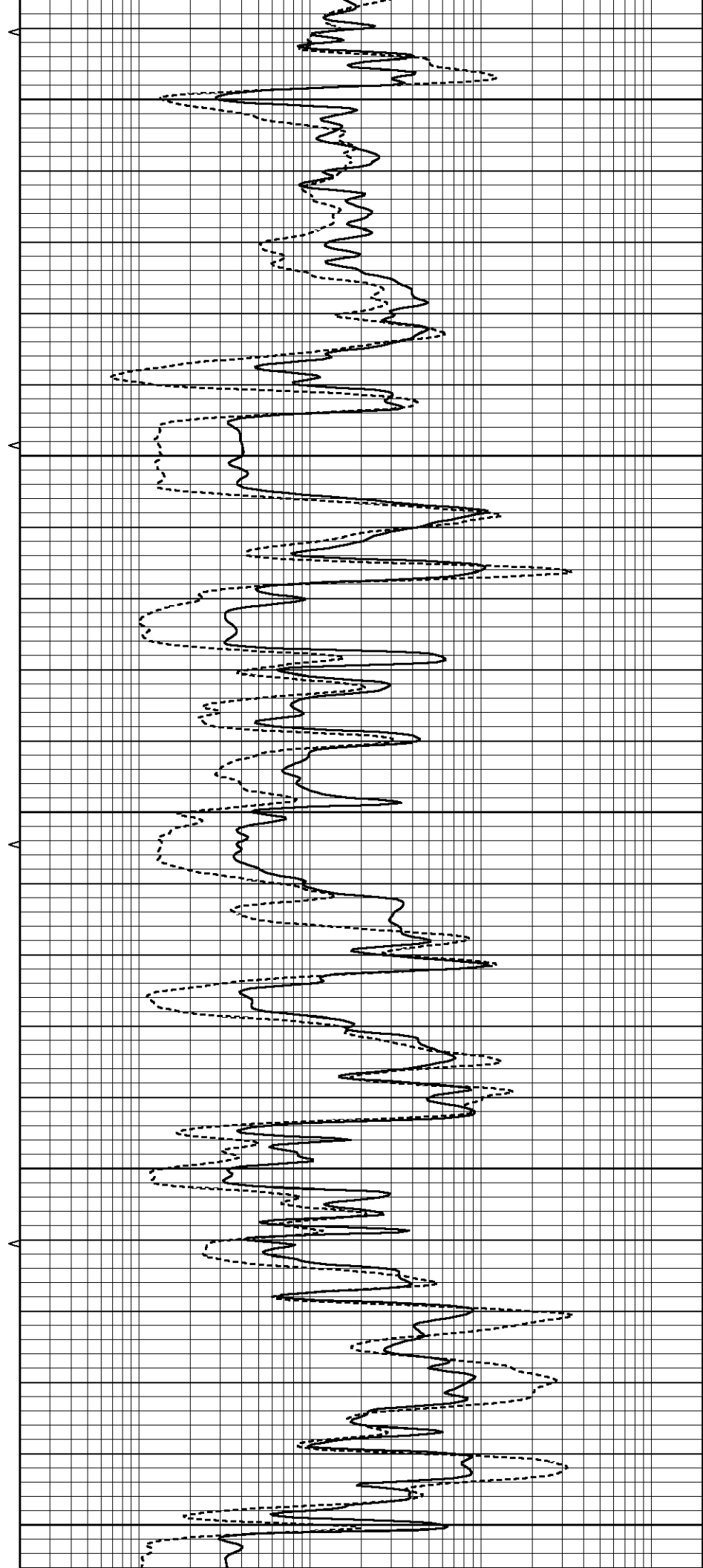
3250

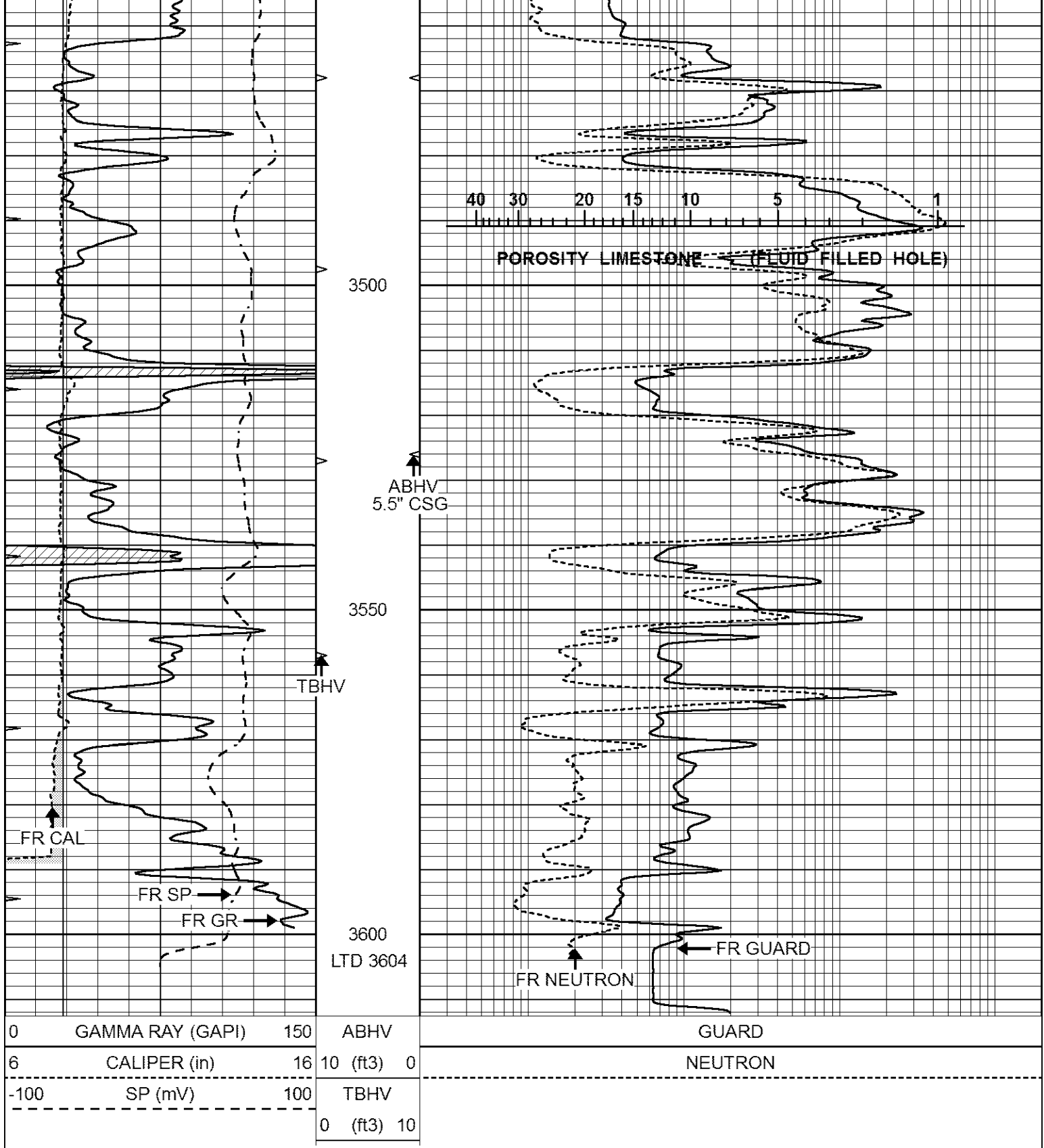
3300

3350

3400

3450



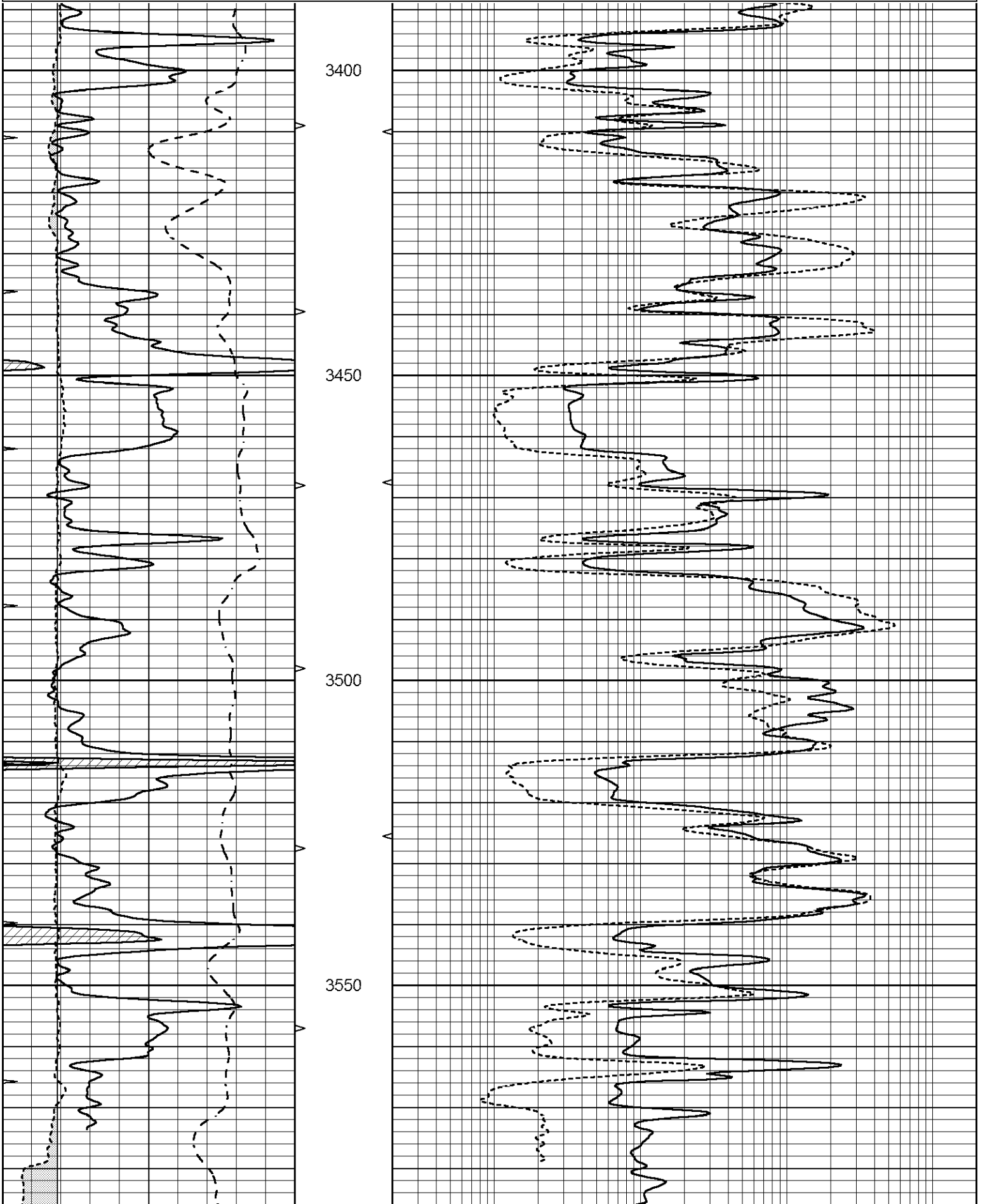


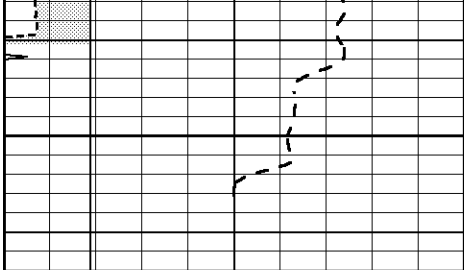
# REPEAT SECTION

Database File 1143rag.db  
 Dataset Pathname pass2.1  
 Presentation Format \_ragstk  
 Dataset Creation Sun May 21 10:47:58 2017  
 Charted by Depth in Feet scaled 1:240

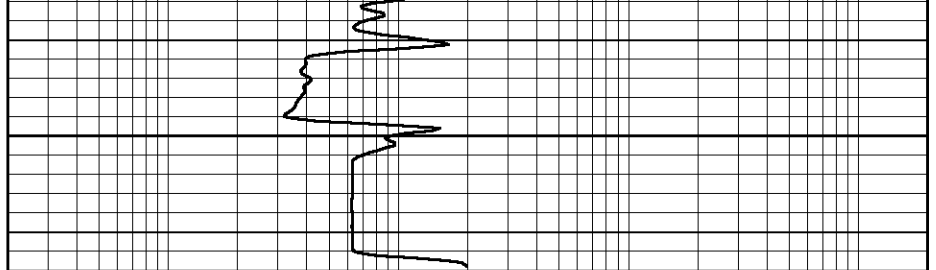
0	GAMMA RAY (GAPI)	150	ABHV
6	CALIPER (in)	16	10 (ft3) 0
-100	SP (mV)	100	TBHV
			0 (ft3) 10

GUARD	
NEUTRON	





3600



0	GAMMA RAY (GAPI)	150	ABHV	GUARD
6	CALIPER (in)	16	10 (ft3) 0	NEUTRON
-100	SP (mV)	100	TBHV	
			0 (ft3) 10	