

# TEMPERATURE LOG

Company RON'S OIL OPERATIONS, INC.  
 Well NICKELSON #15-1  
 Field HOLLY SOUTH EAST  
 County GRAHAM  
 State KANSAS Country USA

Company RON'S OIL OPERATIONS, INC.  
 Well NICKELSON #15-1  
 Field HOLLY SOUTH EAST  
 County GRAHAM  
 State KANSAS Country USA

Location: 403' FNL & 960' FEL  
 API # : 15-085-24131-0000  
 Other Services  
 GRCCL BOND  
 PERF  
 Elevation  
 Permanent Datum SEC 15 TWP 9S RGE 24W  
 Log Measured From GROUND LEVEL Elevation 2499  
 Drilling Measured From KELLING BUSHING 5' A.G.L.  
 KELLY BUSHING  
 K.B. 2504  
 D.F. 2502  
 G.L. 2499

Date	5-9-17
Run Number	ONE
Depth Driller	4105
Depth Logger	4048
Bottom Logged Interval	1000
Top Log Interval	0
Open Hole Size	7 7/8
Type Fluid	WATER @ 224'
Density / Viscosity	
Max. Recorded Temp.	
Estimated Cement Top	
Time Well Ready	
Time Logger on Bottom	
Equipment Number	3362
Location	HAYS, KS
Recorded By	DAN GOTTSCHALK
Witnessed By	TERRY GARRISON

Borehole Record		Tubing Record					
Run Number	Bit	From	To	Size	Weight	From	To
ONE	12 1/4"	0	304'	304'			
TWO	7 7/8"	304'	4105'				

Casing Record	Size	Wgt/Ft	Top	Bottom
Surface String	8 5/8"		0	304'
Prot. String	5 1/2"			
Production String				
Liner				

<<< Fold Here >>>

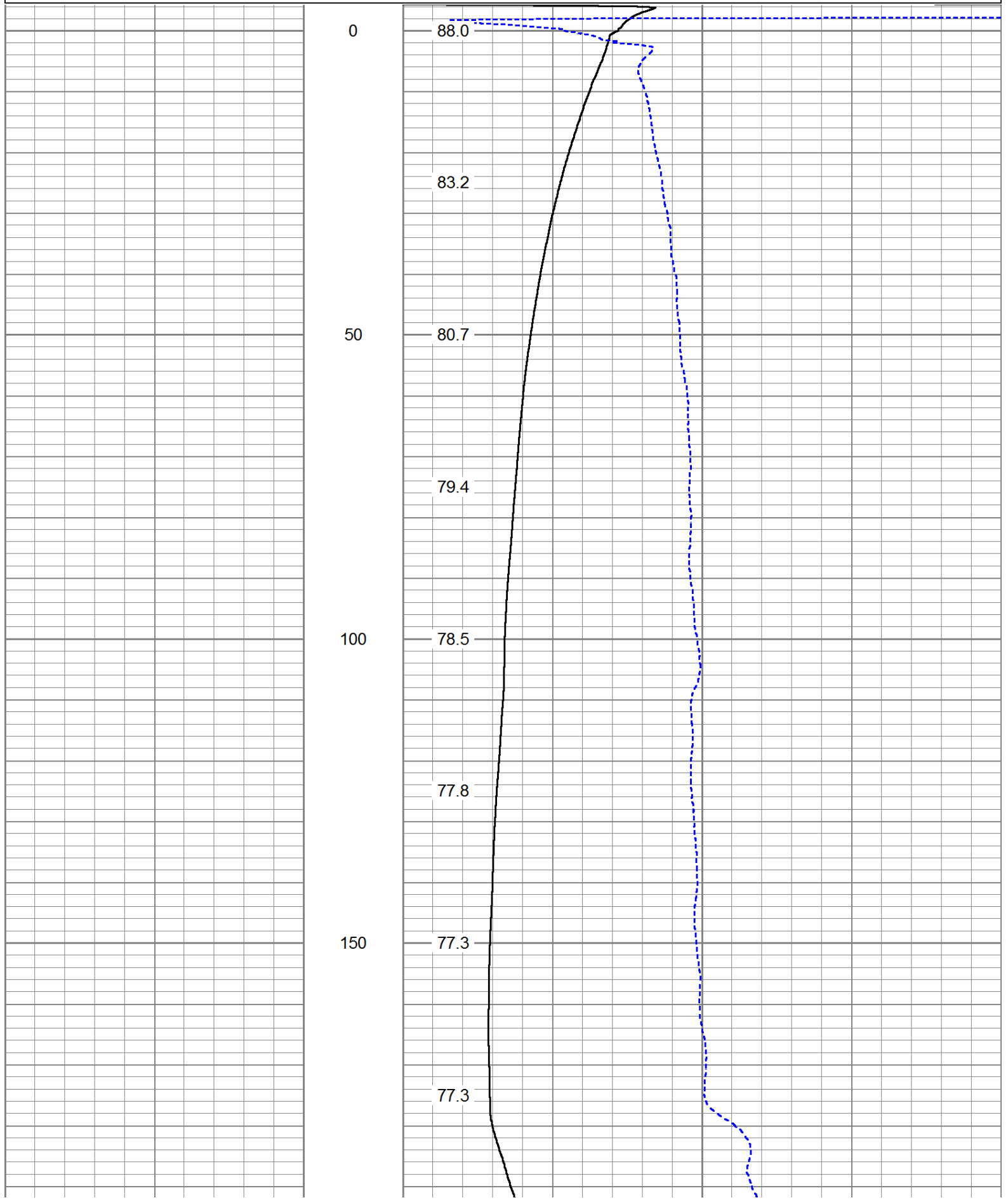
All interpretations are opinions based on inferences from electrical or other measurements and we cannot and do not guarantee the accuracy or correctness of any interpretation, and we shall not, except in the case of gross or willful negligence on our part, be liable or responsible for any loss, costs, damages, or expenses incurred or sustained by anyone resulting from any interpretation made by any of our officers, agents or employees. These interpretations are also subject to our general terms and conditions set out in our current Price Schedule.

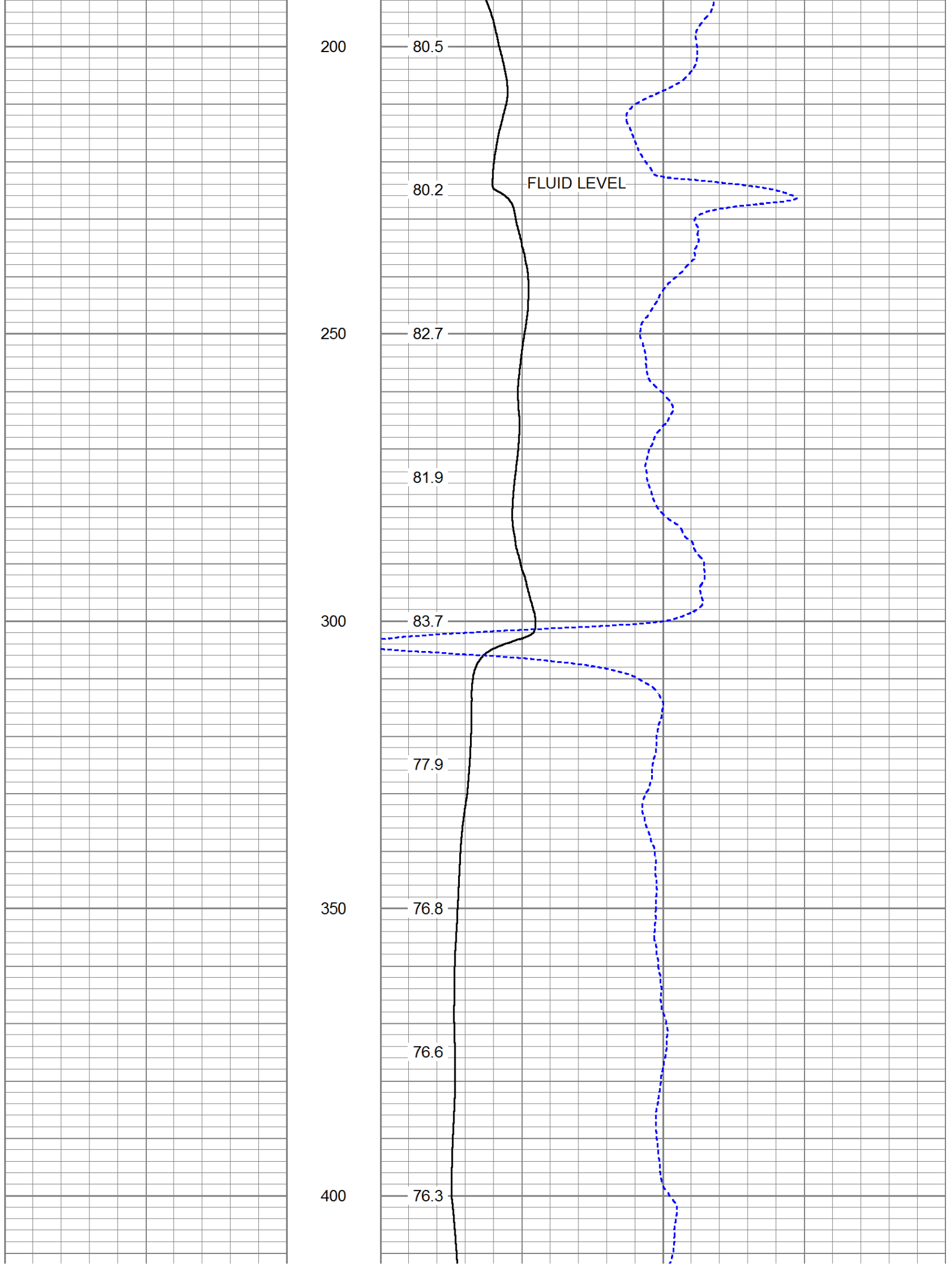
### Comments

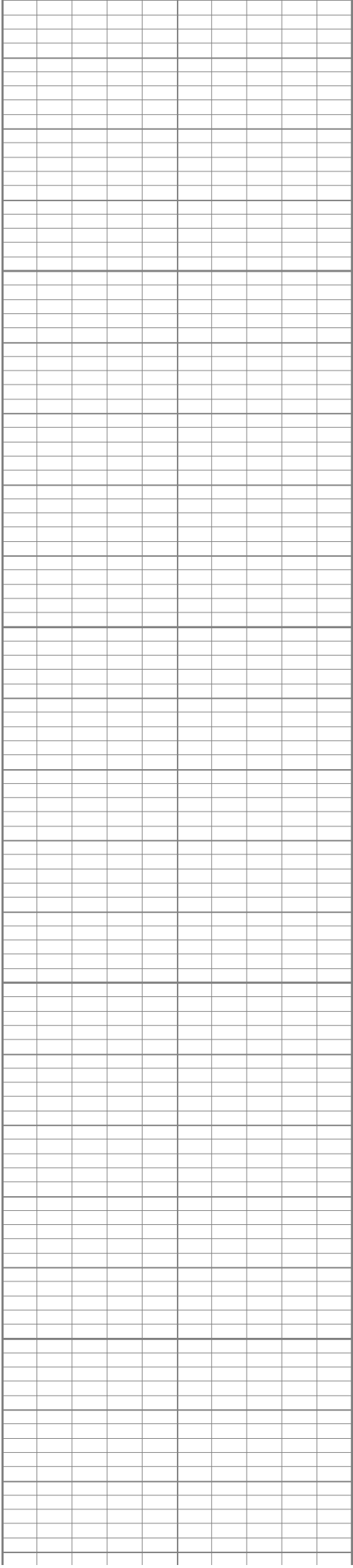
THANK YOU FOR USING ELI WIRELINE SERVICES, HAYS, KS (785) 628-6395  
 DIRECTIONS: NORTH OF WAKEENEY TO THE RED LINE RD. - 6 WEST TO RD. 200 - 3 NORTH - WEST  
 AND SOUTH IN

Database File: 1268bgrccl.db  
 Dataset Pathname: pass1.3  
 Presentation Format: temp  
 Dataset Creation: Tue May 09 11:19:43 2017  
 Charted by: Depth in Feet scaled 1:240

70	TEMP (degF)	120
-1	DTMP (degF)	1
TEMP (degF)		







450

500

550

600

76.8

77.4

77.8

77.2

77.4

77.8

77.5

77.4

76.8

