



**RADIATION
GUARD
LOG**

Company RONS OIL OPERATIONS, INC.
 Well NICKELSON #15-1
 Field HOLLY SOUTH EAST
 County GRAHAM State KANSAS

Location: API #: 15-085-24131-0000
 403' FNL & 960' FEL
 SEC 15 TWP 9S RGE 24W
 Permanent Datum GROUND LEVEL Elevation 2499
 Log Measured From KELLY BUSHING 5' A.G.L
 Drilling Measured From KELLY BUSHING
 Other Services
 CDL/CNL
 DIL
 Elevation
 K.B. 2504
 D.F. 2502
 G.L. 2499

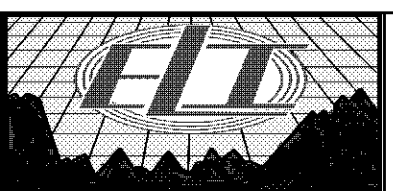
Date	4/23/17
Run Number	ONE
Depth Driller	4105
Depth Logger	4105
Bottom Logged Interval	4103
Top Log Interval	3500
Casing Driller	8 5/8" @ 304
Casing Logger	304
Bit Size	7 7/8
Type Fluid in Hole	CHEMICAL MUD
Density / Viscosity	9.0/48
PH / Fluid Loss	9.0/7.2
Source of Sample	FLOWLINE
Rm @ Meas. Temp	1.30 @ 75F
Rmt @ Meas. Temp	0.97 @ 75F
Rmc @ Meas. Temp	1.56 @ 75F
Source of Rmf / Rmc	MEASUREMENT
Rm @ BHT	0.83 @ 117F
Time Circulation Stopped	2 HOURS
Time Logger on Bottom	
Maximum Recorded Temperature	117F
Equipment Number	3802
Location	HAYS, KANSAS
Recorded By	JASON CAPPELLUCCI
Witnessed By	CHRIS BEAN

<<< Fold Here >>>

All interpretations are opinions based on inferences from electrical or other measurements and we cannot and do not guarantee the accuracy or correctness of any interpretation, and we shall not, except in the case of gross or willful negligence on our part, be liable or responsible for any loss, costs, damages, or expenses incurred or sustained by anyone resulting from any interpretation made by any of our officers, agents or employees. These interpretations are also subject to our general terms and conditions set out in our current Price Schedule.

Comments

THANK YOU FOR USING ELI WIRELINE SERVICES, HAYS, KS. (785) 628-6395
 DIRECTIONS
 WAKEENEY, KS. - NORTH TO REDLINE RD. - 6 WEST TO 200 RD.
 3 NORTH - WEST INTO

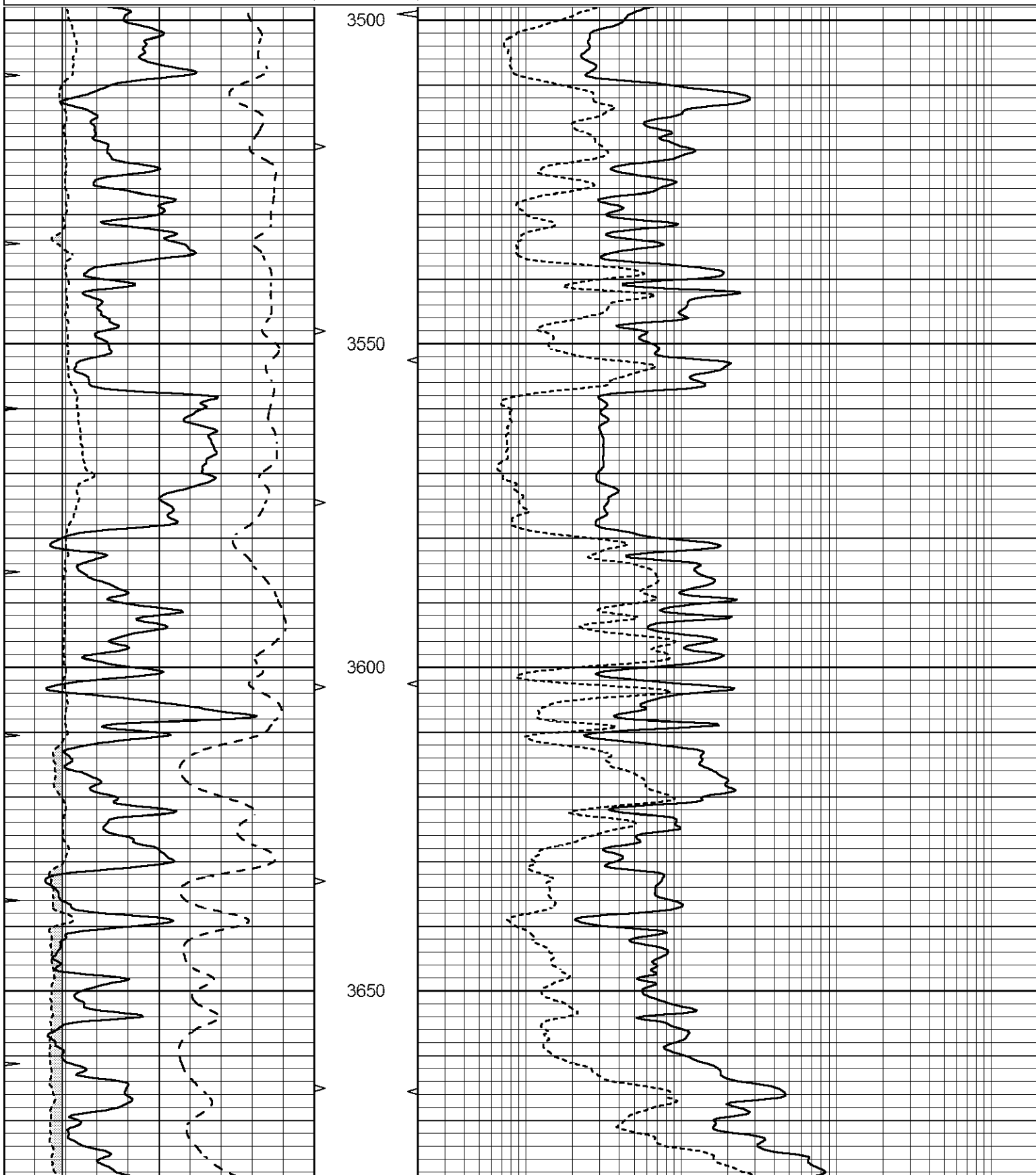


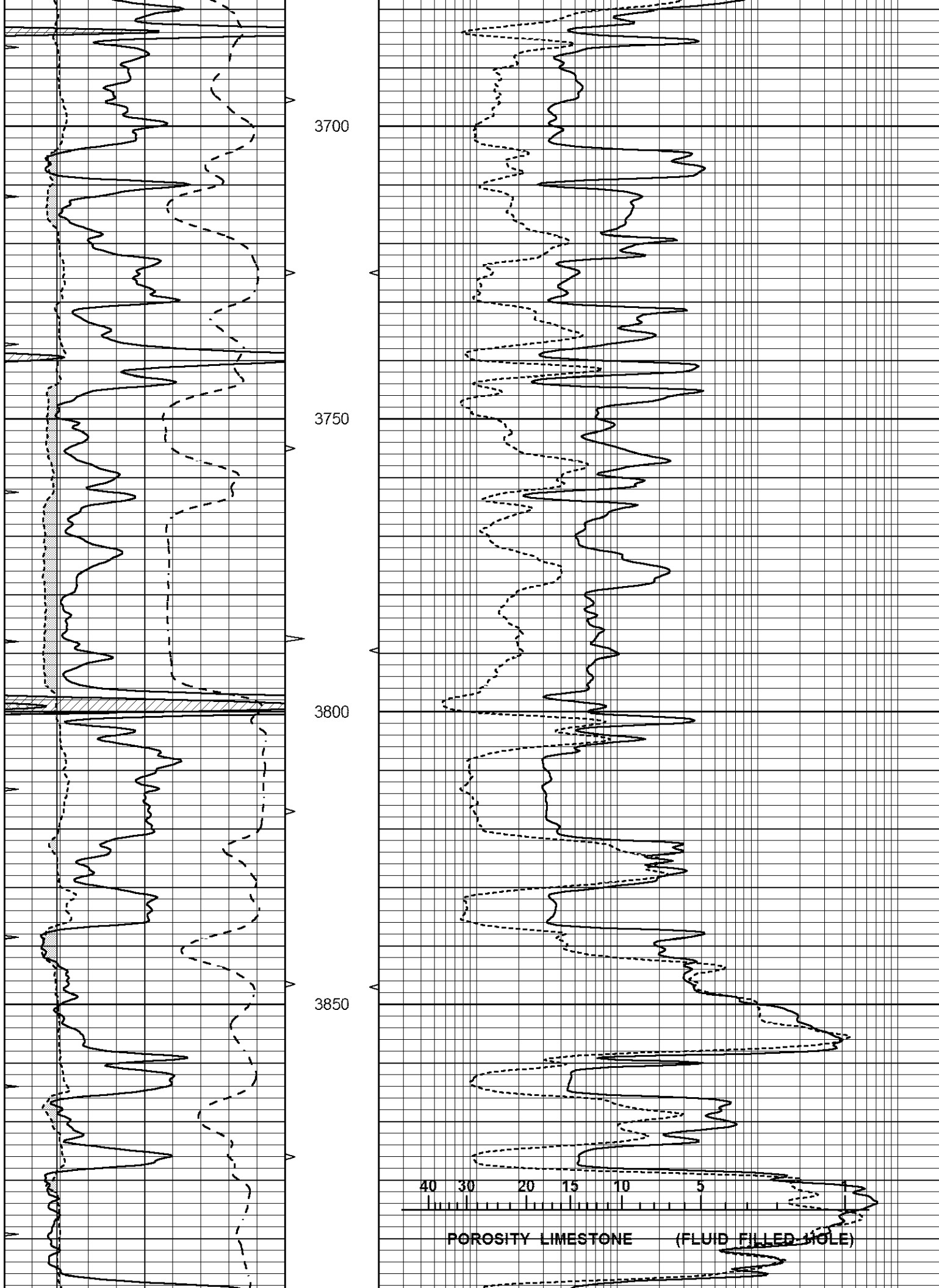
MAIN SECTION

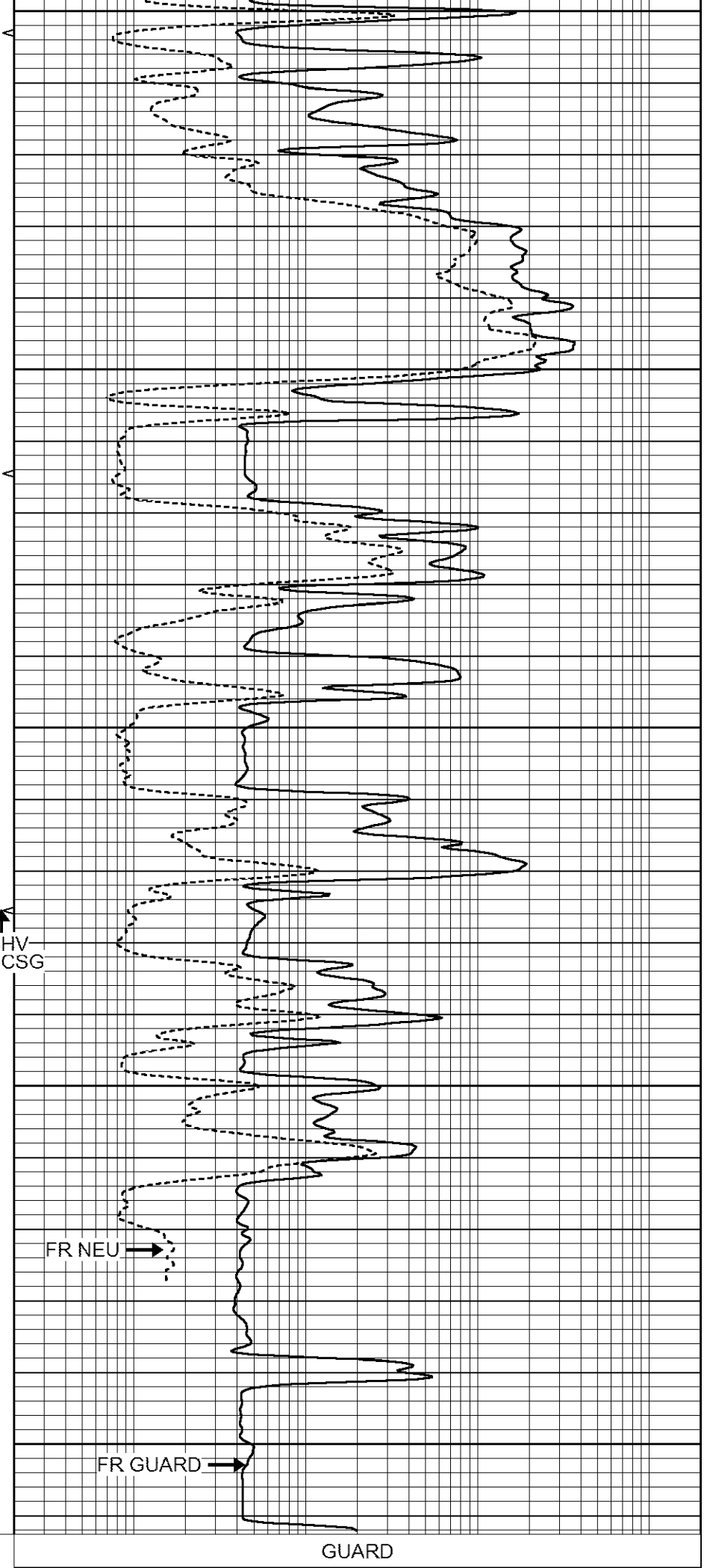
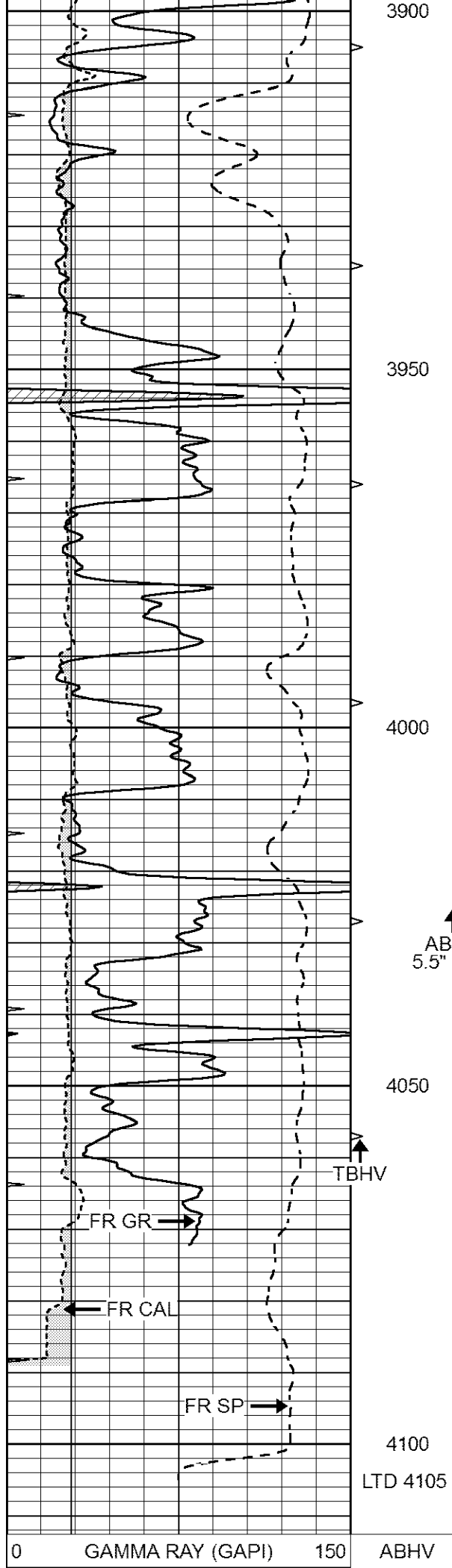
Database File 1137ddn8.db
 Dataset Pathname pass3.1.1
 Presentation Format _ragstk
 Dataset Creation Sun Apr 23 07:46:00 2017
 Charted by Depth in Feet scaled 1:240

0	GAMMA RAY (GAPI)	150	ABHV
6	CALIPER (in)	16	10 (ft3) 0
-100	SP (mV)	100	TBHV
			0 (ft3) 10

GUARD	
NEUTRON	







6	CALIPER (in)	16	10 (ft3)	0	NEUTRON
-100	SP (mV)	100	TBHV		
			0 (ft3)	10	