

**MIDWEST SURVEYS**  
 LOGGING - PERFORATING - CONSULTING SERVICES  
 P.O. Box 68, Osawatomie, KS 66064  
 913 / 756 - 2128

**GAMMA RAY / NEUTRON / CCL**

API# 15-107-25,102

File No.

Company Hat Production, LLC

Well Sergeant No.- 8

Field LaCygne - Cadmus

County Linn State Kansas

Location 1980' FSL & 1100' FEL  
W/2-W/2-NE-SE

Sec. 9 Twp. 20S Rge. 23E

Permanent Datum GL Elevation 959'

Log Measured From GL

Drilling Measured From GL

Other Services Perforate

Elevation K.B. NA  
D.F. NA  
G.L. 959'

Date 08-19-2015

Run Number One

Depth Driller 338.0

Depth Logger 331.0

Bottom Logged Interval 330.0

Top Log Interval 20.0

Fluid Level Full

Type Fluid Water

Density / Viscosity NA

Salinity - PPM Cl NA

Max Recorded Temp NA

Estimated Cement Top 0.0

Equipment No. Location 104 Osawatomie

Recorded By Steve Wfridisch

Witnessed By Mark Brechisen

RUN

BORE-HOLE RECORD

No. BIT FROM TO SIZE WGT. FROM TO

One 11.00" 0.0 20.0 8.00" 22.0# 0.0 20.0

Two 5.875" 20.0 338.0 2.875" 6.5# 0.0 331.0

CASING RECORD

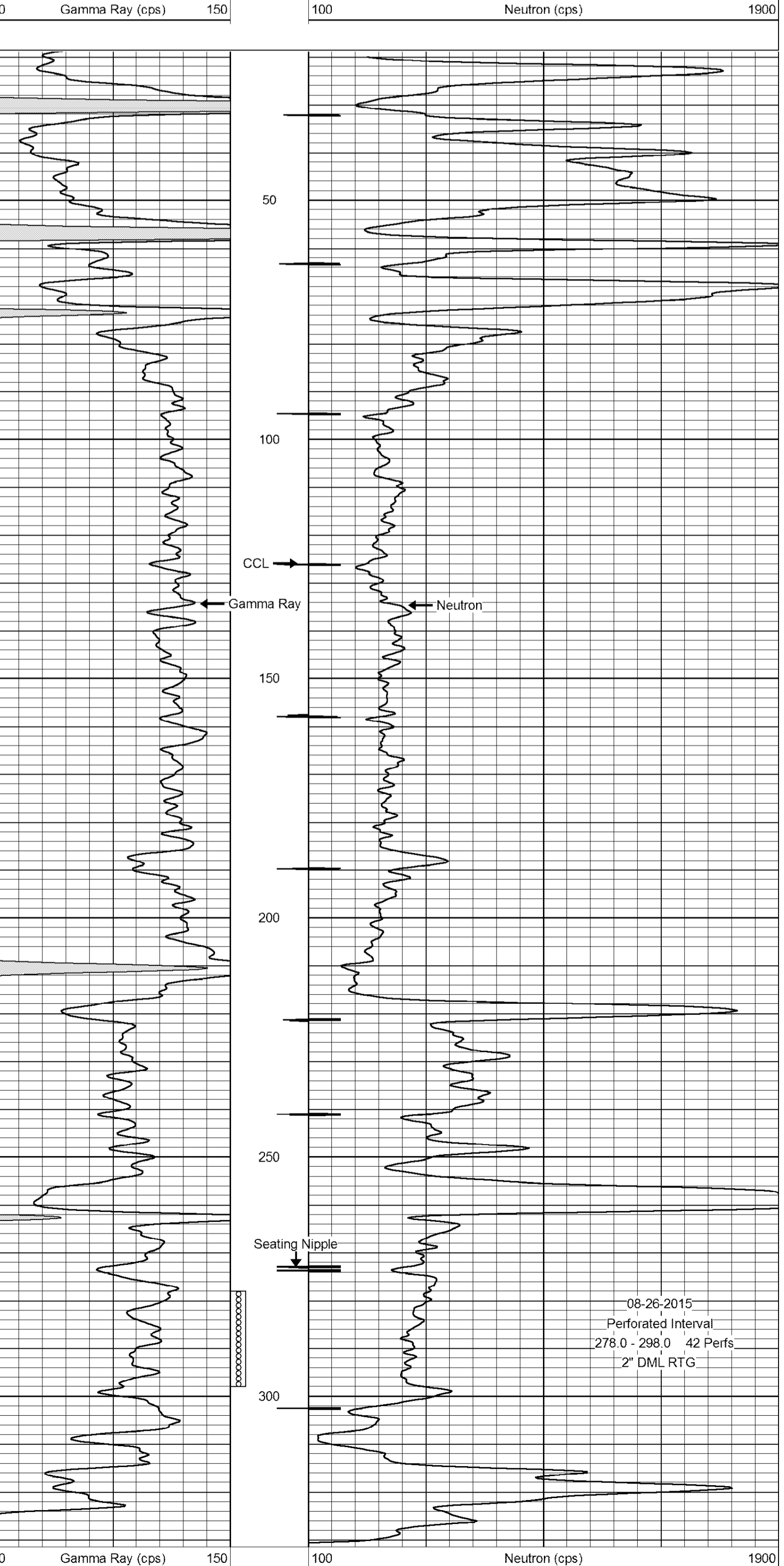
<<< Fold Here >>>

All interpretations are opinions based on inferences from electrical or other measurements and we cannot and do not guarantee the accuracy or correctness of any interpretation, and we shall not, except in the case of gross or willful negligence on our part, be liable or responsible for any loss, costs, damages, or expenses incurred or sustained by anyone resulting from any interpretation made by any of our officers, agents or employees. These interpretations are also subject to our general terms and conditions set out in our current Price Schedule.

Comments

Drilling Contractor :  
Hat Drilling, LLC

Database File: sergent 8.db  
 Dataset Pathname: pass1  
 Presentation Format: gr-n-ccl  
 Dataset Creation: Wed Aug 19 09:00:22 2015 by Log SCH 111116  
 Charted by: Depth in Feet scaled 1:240



08-26-2015  
 Perforated Interval  
 278.0 - 298.0 42 Perfs  
 2" DML RTG