



**MIDWEST SURVEYS**  
 LOGGING - PERFORATING - CONSULTING SERVICES  
 P.O. Box 68, Osawatomie, KS 66064  
 913 / 755 - 2128

**GAMMA RAY / NEUTRON / CCL**

File No. Company Sandstone Resources, LLC.  
 Well Richards No. I-1  
 Field Paola / Rantoul  
 County Franklin State Kansas

Location 4280' FSL & 2620' FEL  
 SW-SW-NW-NE

Sec. 12 Twp. 17s Rge. 20e  
 Permanent Datum GL Elevation 922'  
 Log Measured From GL  
 Drilling Measured From GL

Date 09-04-2015  
 Run Number One  
 Depth Driller 650.0  
 Depth Logger 602.5  
 Bottom Logged Interval 601.5  
 Top Log Interval 20.0  
 Fluid Level Full

Type Fluid Water  
 Density / Viscosity NA  
 Salinity - PPM Cl NA  
 Max Recorded Temp NA  
 Estimated Cement Top 0.0  
 Equipment No. Location 102 Osawatomie  
 Recorded By Gary Windisch  
 Witnessed By Clay Hughes

BORE-HOLE RECORD  
 RUN No. BIT FROM TO SIZE WGT. FROM TO  
 One 11.00" 0.0 23.0 7.00" 17.0# 0.0 23.0  
 Two 5.625" 23.0 650.0 2.875" 6.5# 0.0 636.0

CASING RECORD  
 SIZE WGT. FROM TO  
 2.875" 6.5# 0.0 636.0  
 Batlle Set At

<<< Fold Here >>>

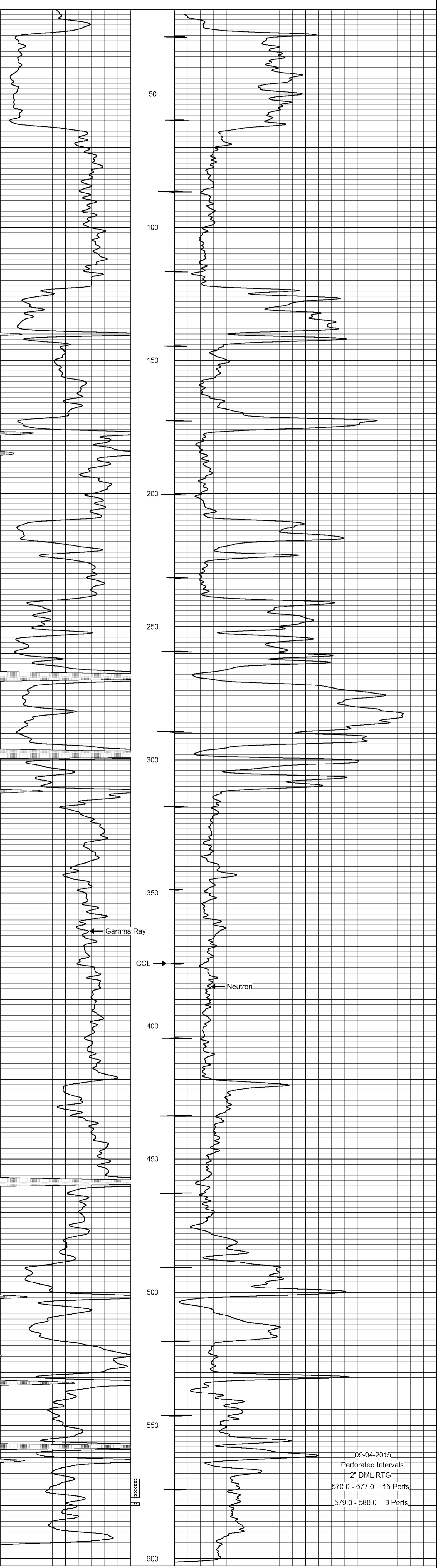
All interpretations are opinions based on inferences from electrical or other measurements and we cannot and do not guarantee the accuracy or correctness of any interpretation, and we shall not, except in the case of gross or willful negligence on our part, be liable or responsible for any loss, costs, damages, or expenses incurred or sustained by anyone resulting from any interpretation made by any of our officers, agents or employees. These interpretations are also subject to our general terms and conditions set out in our current Price Schedule.

Comments

Drilling Contractor :  
 HB Energy

Database File: richards 1i.db  
 Dataset Pathname: pass1  
 Presentation Format: gr-n-ccl  
 Dataset Creation: Fri Sep 04 10:32:15 2015 by Log SCH 111116  
 Charted by: Depth in Feet scaled 1:240

0 Gamma Ray (cps) 150 -1 CCL 1 100 Neutron (cps) 1900  
 150 Gamma Ray (cps) 300



0 Gamma Ray (cps) 150 -1 CCL 1 100 Neutron (cps) 1900  
 150 Gamma Ray (cps) 300