



DUAL INDUCTION LOG

Company: LEBSACK OIL PRODUCTION, INC.
 Well: GARDEN CITY NO. 2-13
 Field: WEST EXT. DAMME
 County: FINNEY
 State: KANSAS

Company: LEBSACK OIL PRODUCTION, INC.
 Well: GARDEN CITY NO. 2-13
 Field: WEST EXT. DAMME
 County: FINNEY
 State: KANSAS

Location: API #: 15-055-22,417-00-00
 E2-E2-W2-NE
 1,320' FNL & 1,420' FEL
 SEC 13 TWP 22S RGE 34W
 Permanent Datum: GROUND LEVEL Elevation 2912
 Log Measured From: KELLY BUSHING
 Drilling Measured From: KELLY BUSHING
 Other Services: CNL/CDL MEL
 Elevation: K.B. 2925, D.F. N/A, G.L. 2912

Date	7/16/2015
Run Number	ONE
Depth Driller	4850
Depth Logger	4851
Bottom Logged Interval	4850
Top Log Interval	400
Casing Driller	8,625 @ 418
Casing Logger	419
Bit Size	7.875
Type Fluid in Hole	CHEMICAL
Salinity, ppm CL	3300
Density / Viscosity	9.4 48
pH / Fluid Loss	10.5 8.8
Source of Sample	Flowline
Rm @ Meas. Temp	.65 @ 78
Rmt @ Meas. Temp	.49 @ 78
Rmc @ Meas. Temp	.88 @ 78
Source of Rmf / Rmc	Charts
Rm @ BHT	.41 @ 125
Operating Rig Time	3 1/2 HOURS
Max Rec. Temp. F	125
Equipment Number	108
Location	Hays
Recorded By	J. LONG
Witnessed By	JOSH AUSTIN

<<< Fold Here >>>

All interpretations are opinions based on inferences from electrical or other measurements and Pioneer Wireline Services, LLC cannot and does not guarantee the accuracy or correctness of any interpretation, and Pioneer Wireline Services, LLC will not be liable or responsible for any loss, costs, damages, or expenses incurred or sustained by anyone resulting from any interpretation made by any of our officers, agents or employees.

Comments

N/A DENOTES NOT AVAILABLE OR NON-APPLICABLE.
 SCOTT CITY, SOUTH TO TENNIS ROAD, 6 WEST, 1 1/2 SOUTH, WEST INTO

Log Measured From: KELLY BUSHING 13 Ft. Above Permanent Datum

THANK YOU FOR USING PIONEER ENERGY SERVICES
www.pioneerenergy.com 785-625-3858

Your Pioneer Energy Services Crew Engineer: J. LONG Operator: Operator: Operator:	This Log Record Was Witnessed By Primary Witness: JOSH AUSTIN Secondary Witness: Secondary Witness: Secondary Witness:
---	--

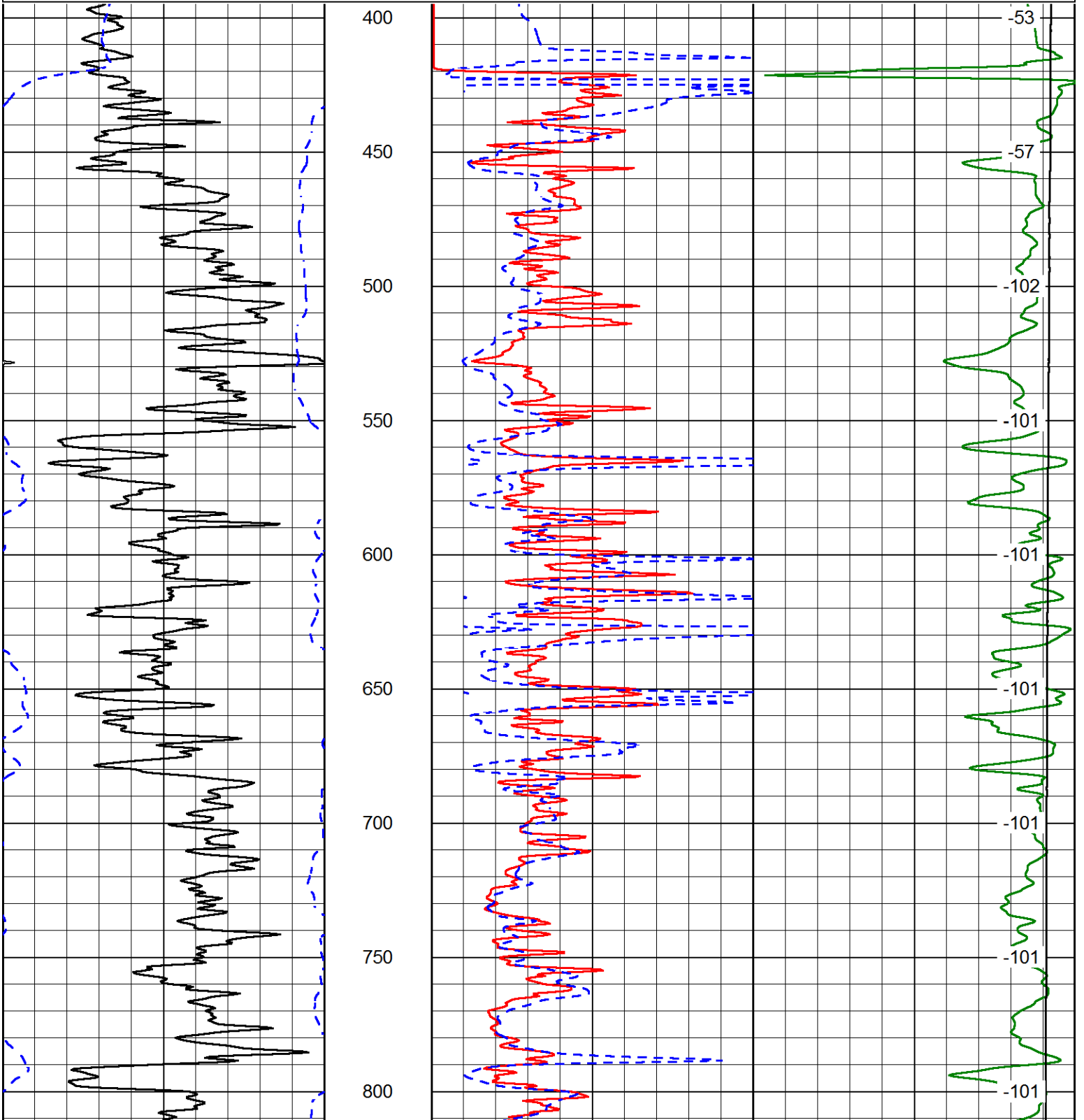
Database File lebsack_gardency_2-13hd.db
 Dataset Pathname DIL/lebstck
 Presentation Format dil2in
 Dataset Creation Thu Jul 16 22:53:22 2015
 Charted by Depth in Feet scaled 1:600

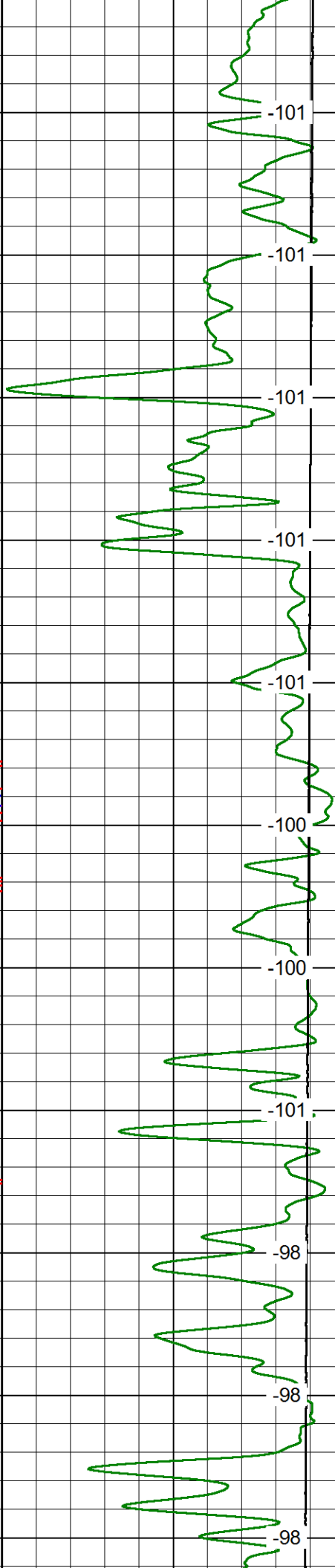
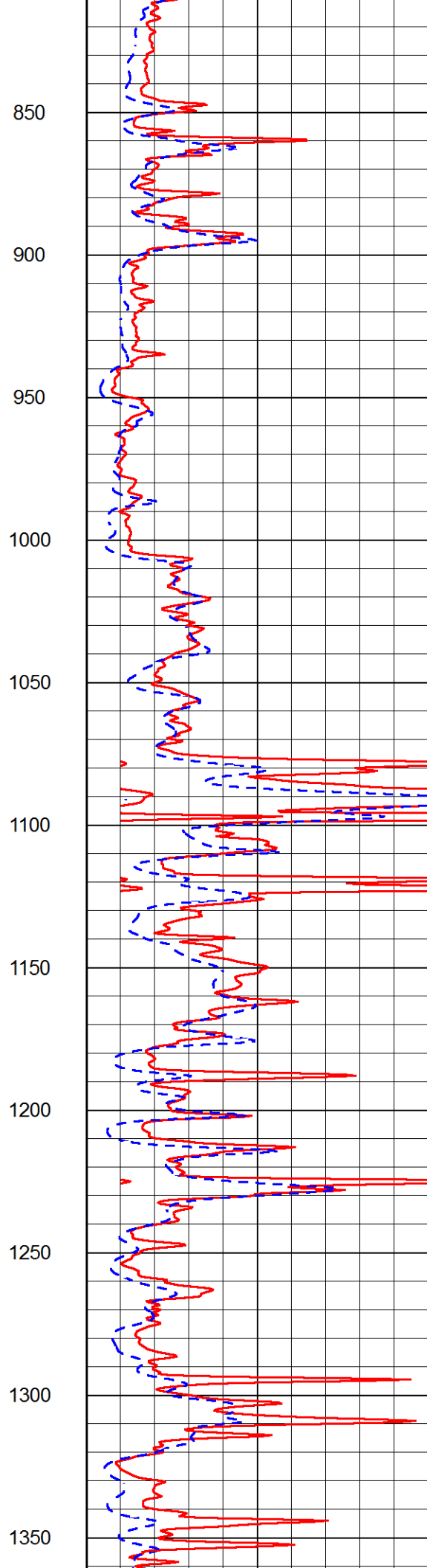
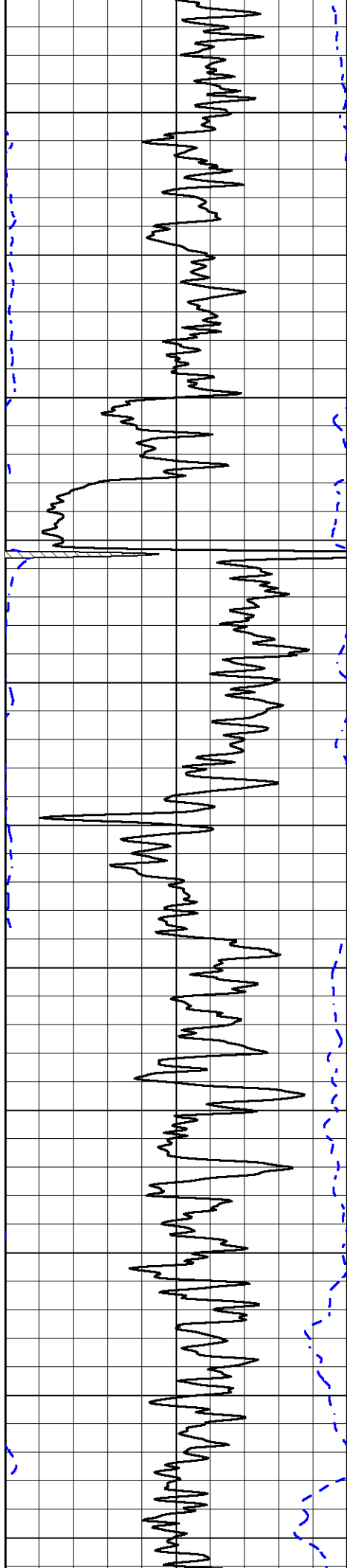
0 Gamma Ray (GAPI) 150
 -200 SP (mV) 0

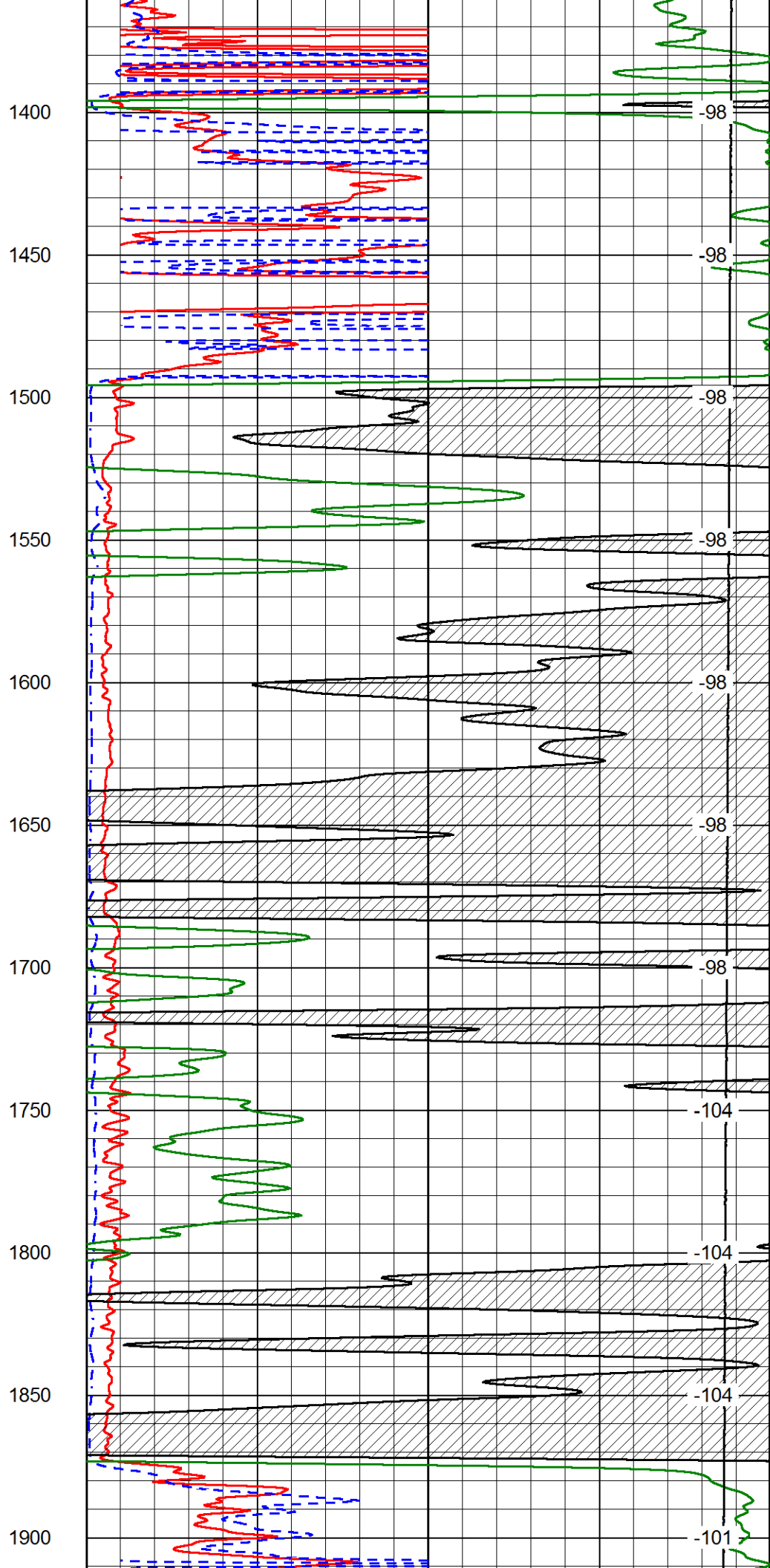
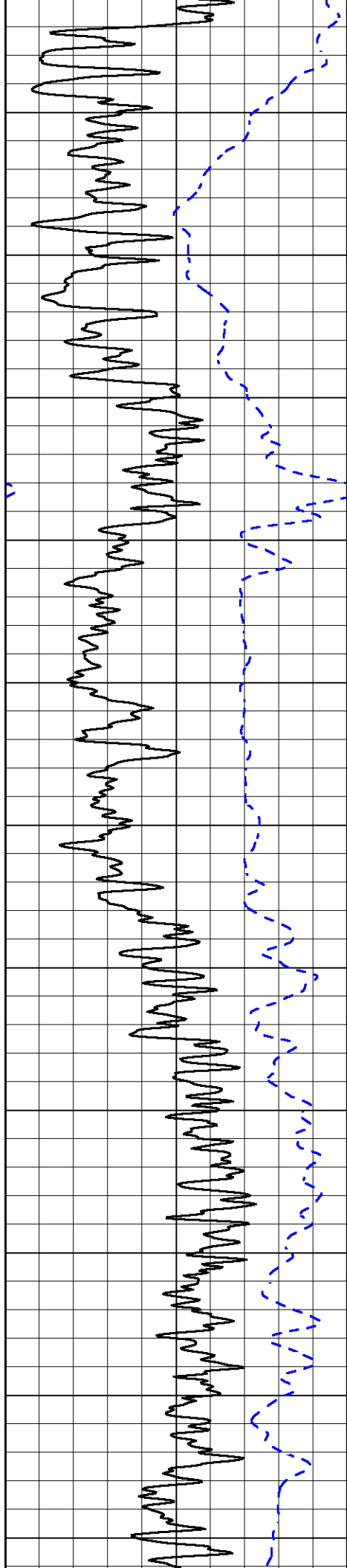
1000 Conductivity 0
 15000 Line Tension (lb) 0

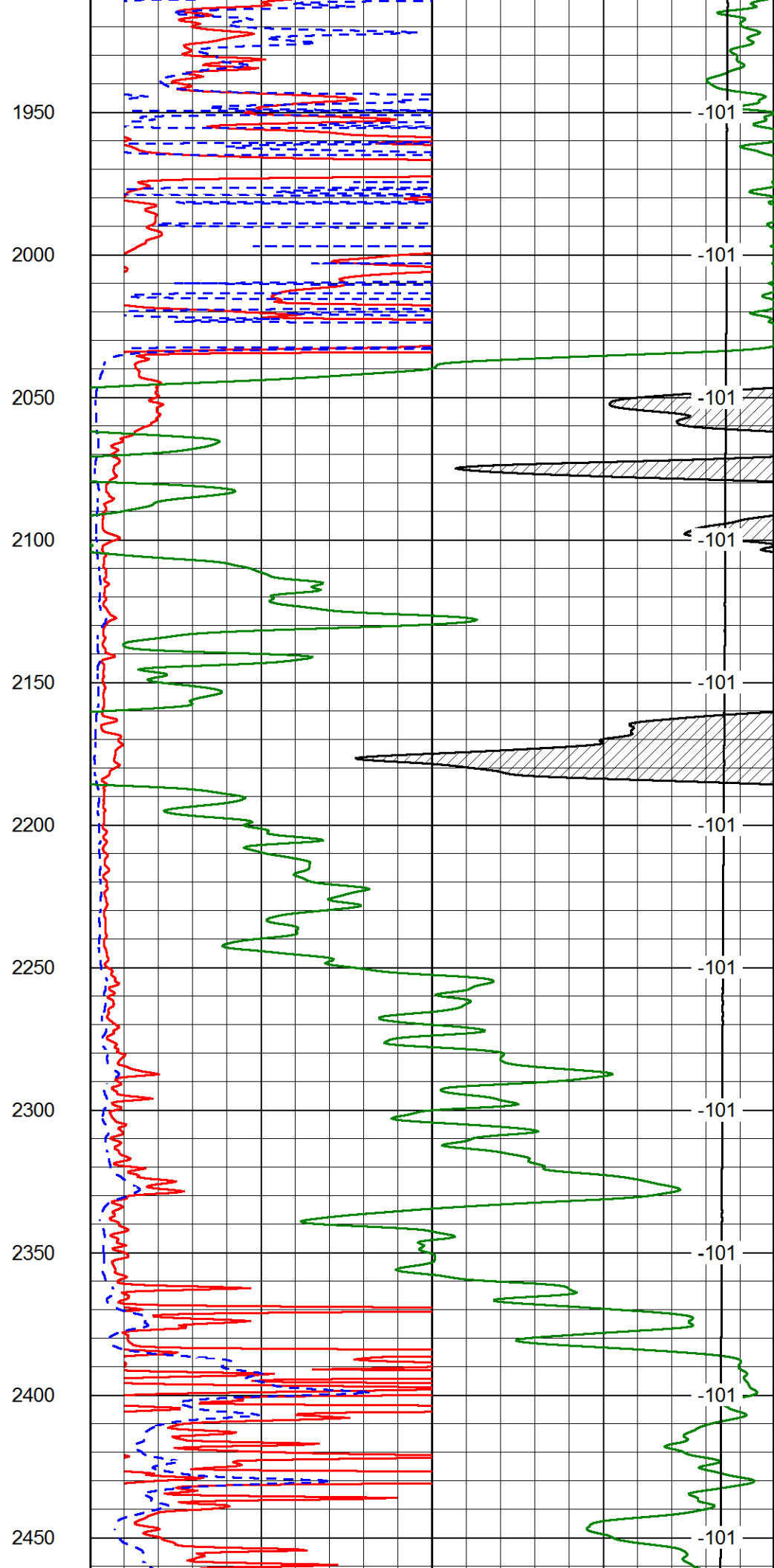
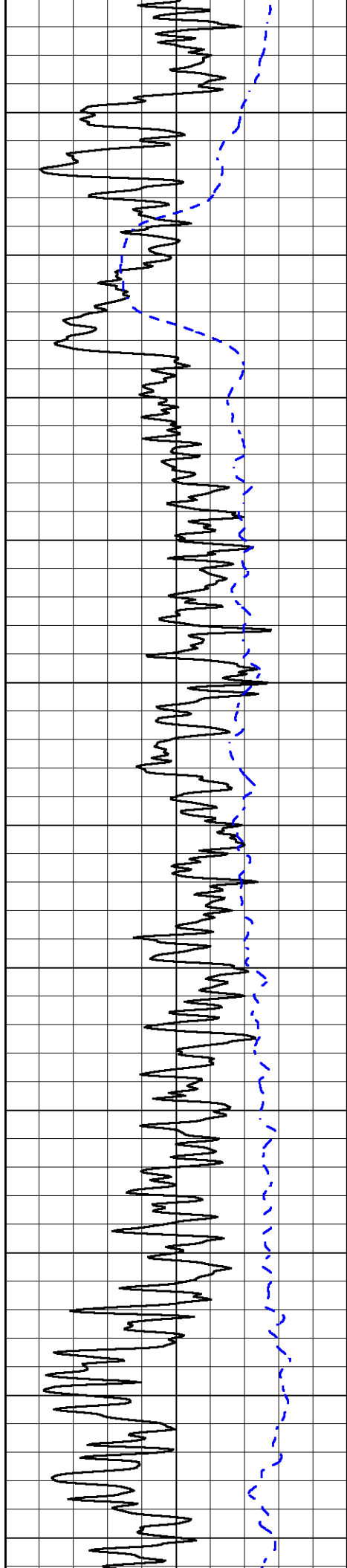
0 Shallow Resistivity (Ohm-m) 50
 0 Deep Resistivity (Ohm-m) 50
 Shallow Resistivity
 50 (Ohm-m) 500
 50 Deep Resistivity (Ohm-m) 500

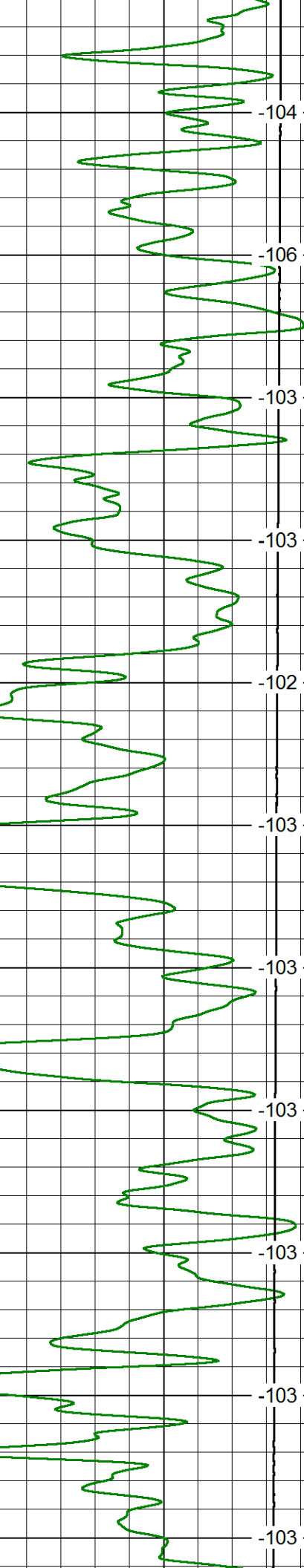
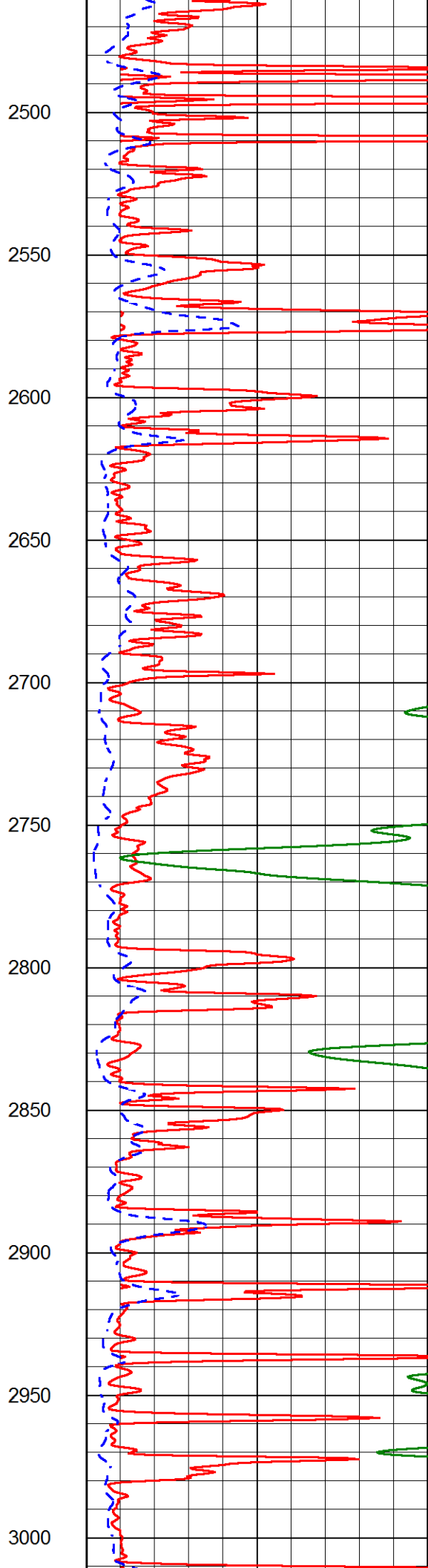
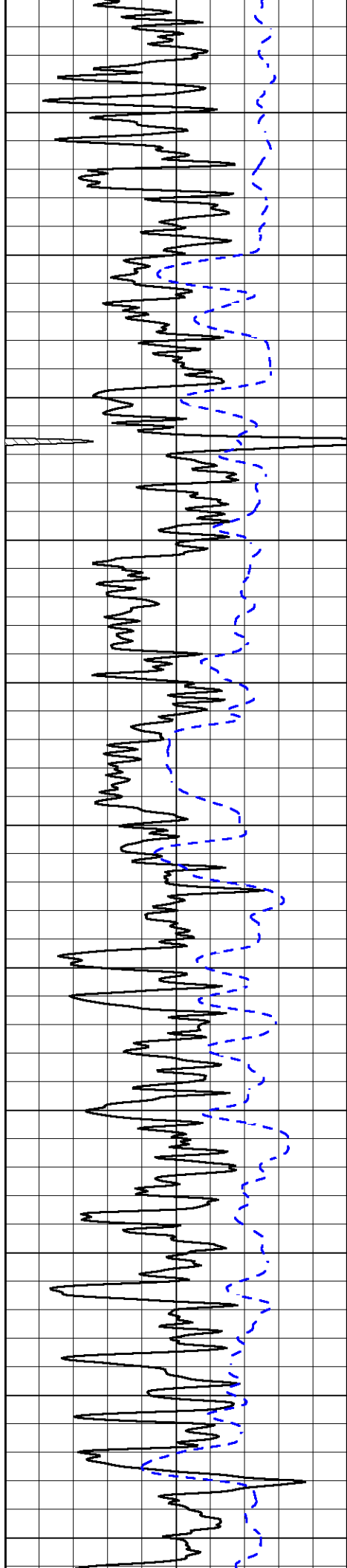
LSPD
 (ft/min)

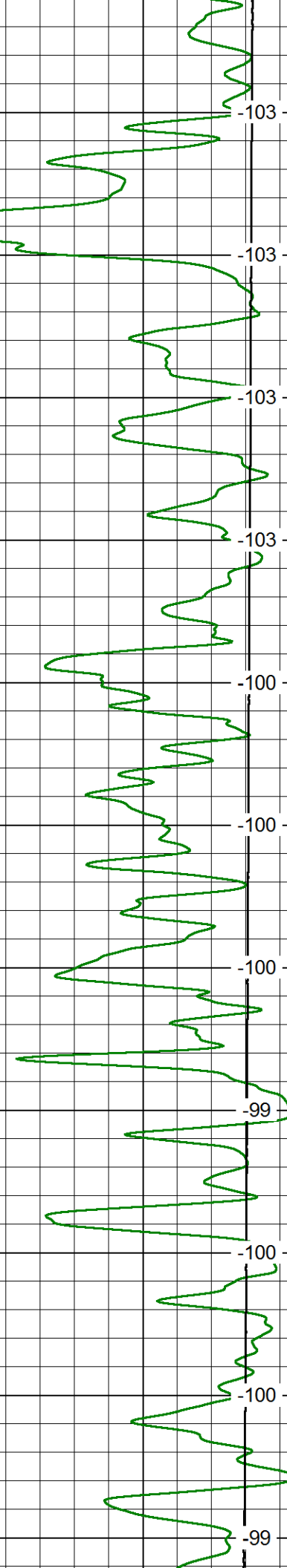
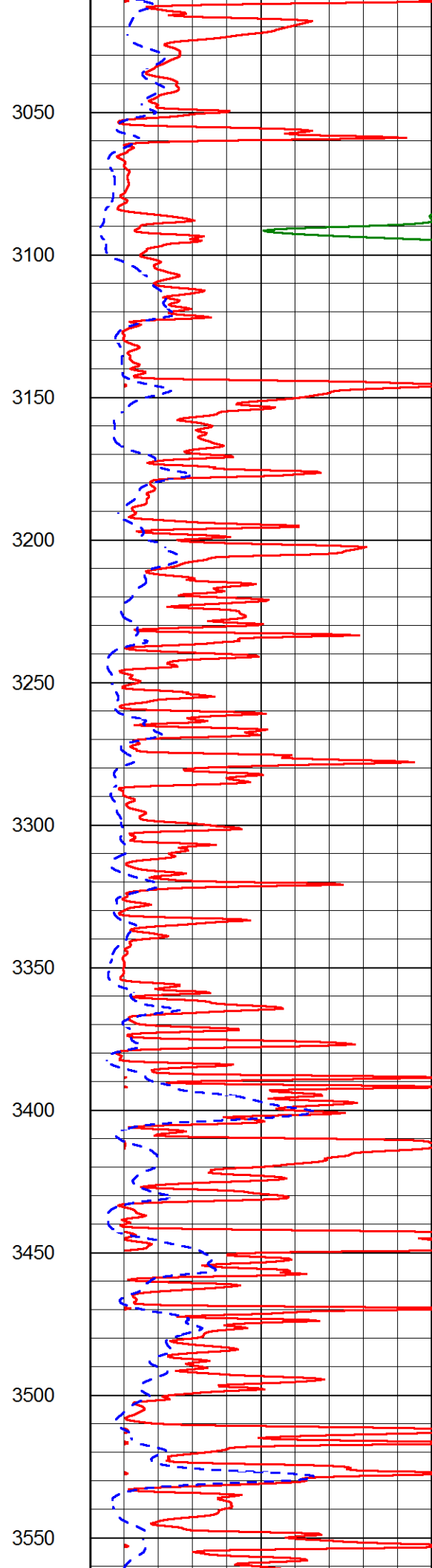
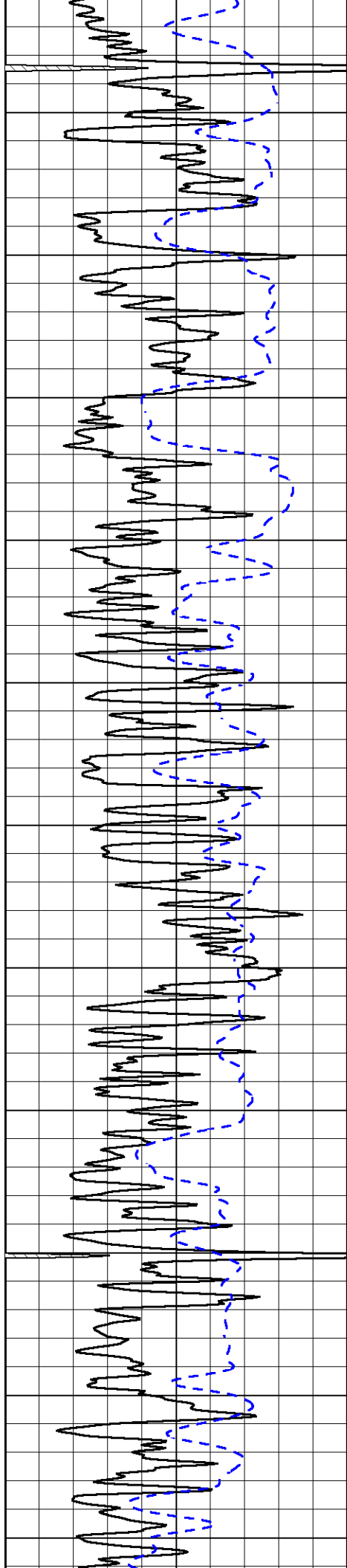


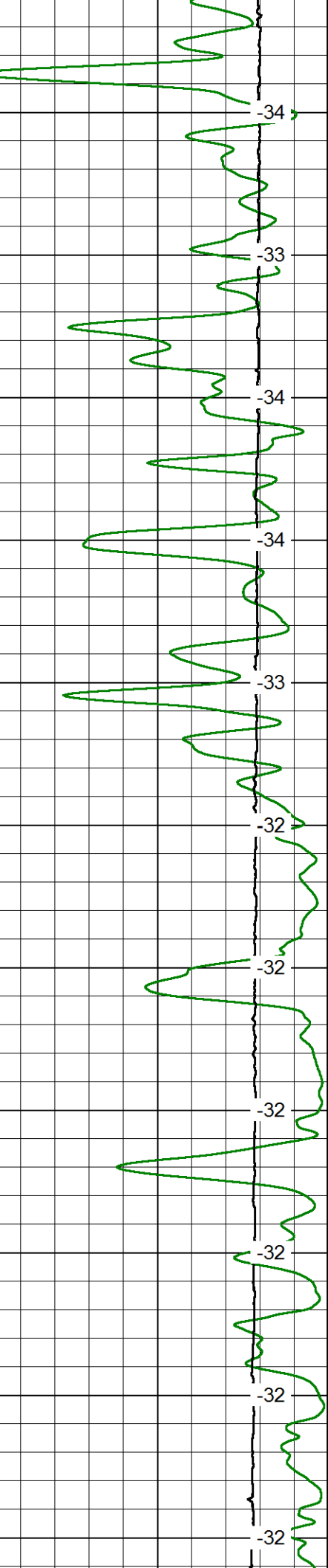
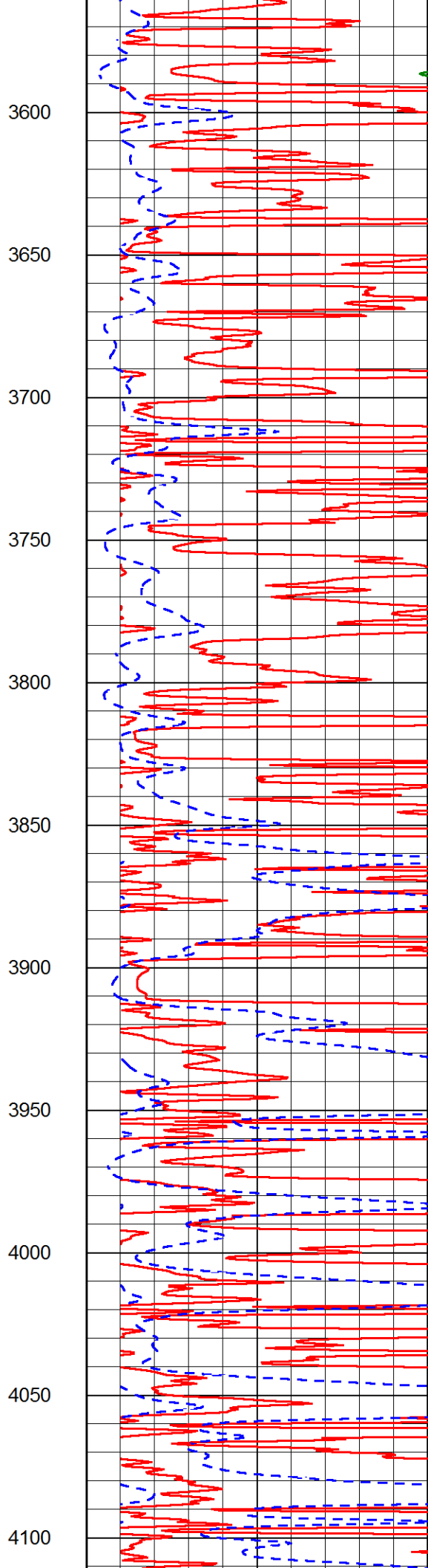
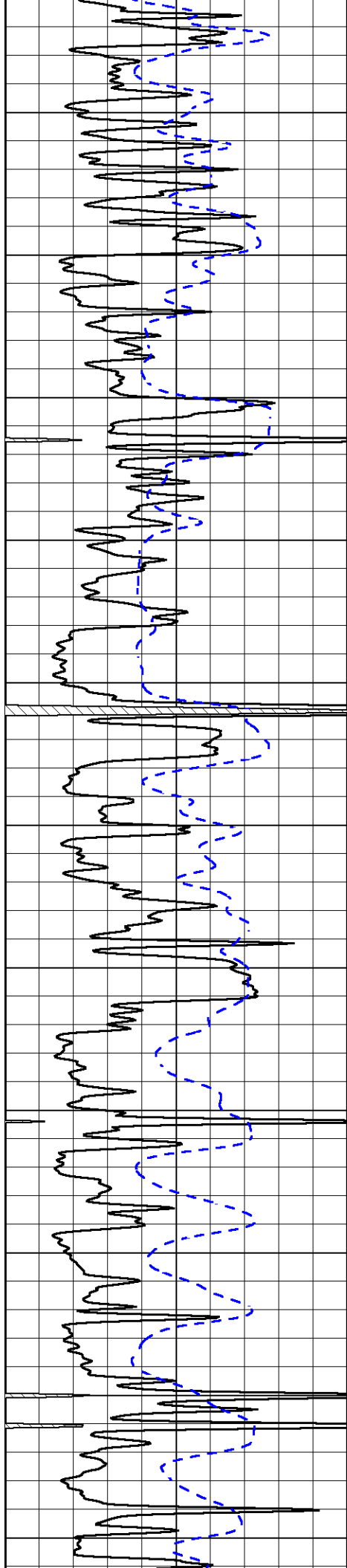


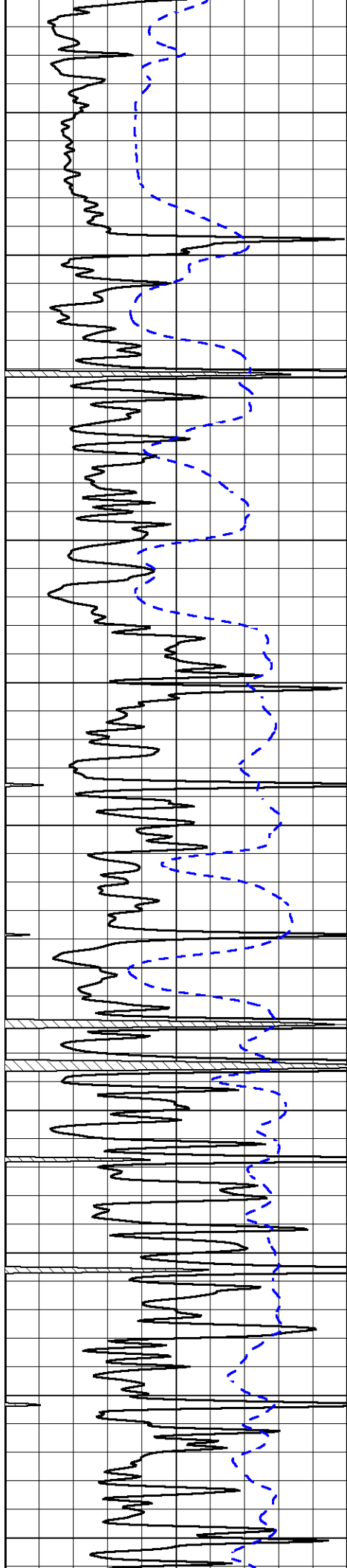




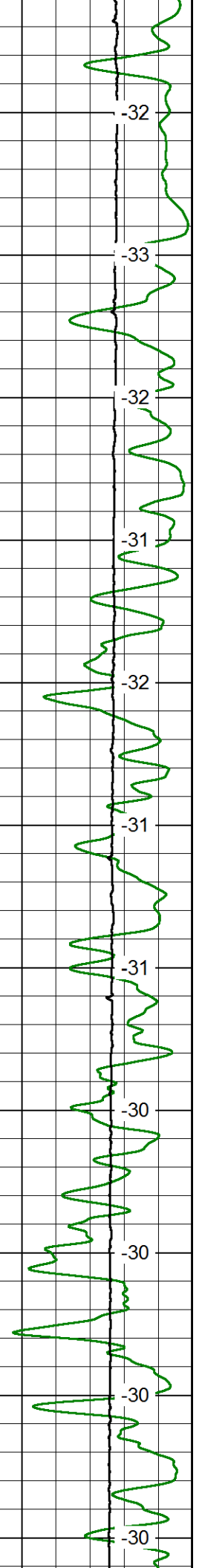
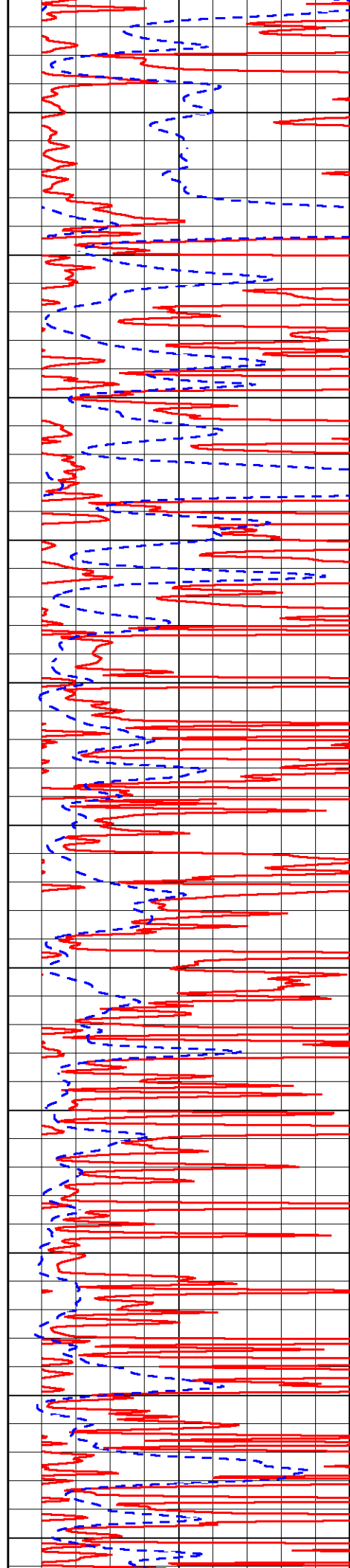




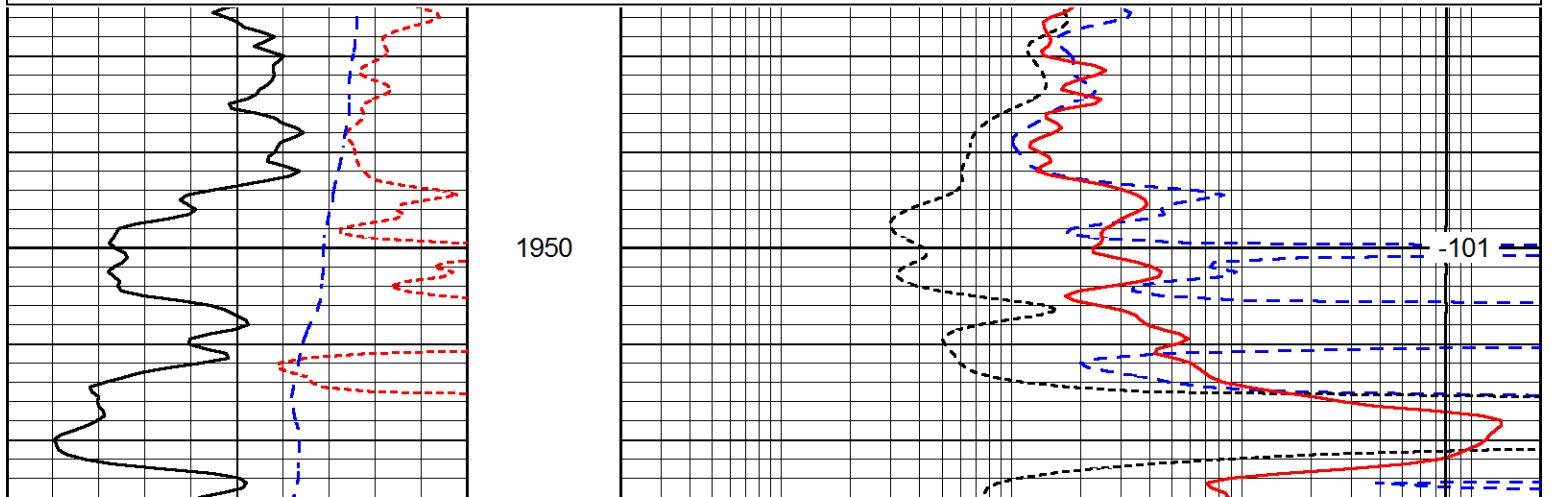
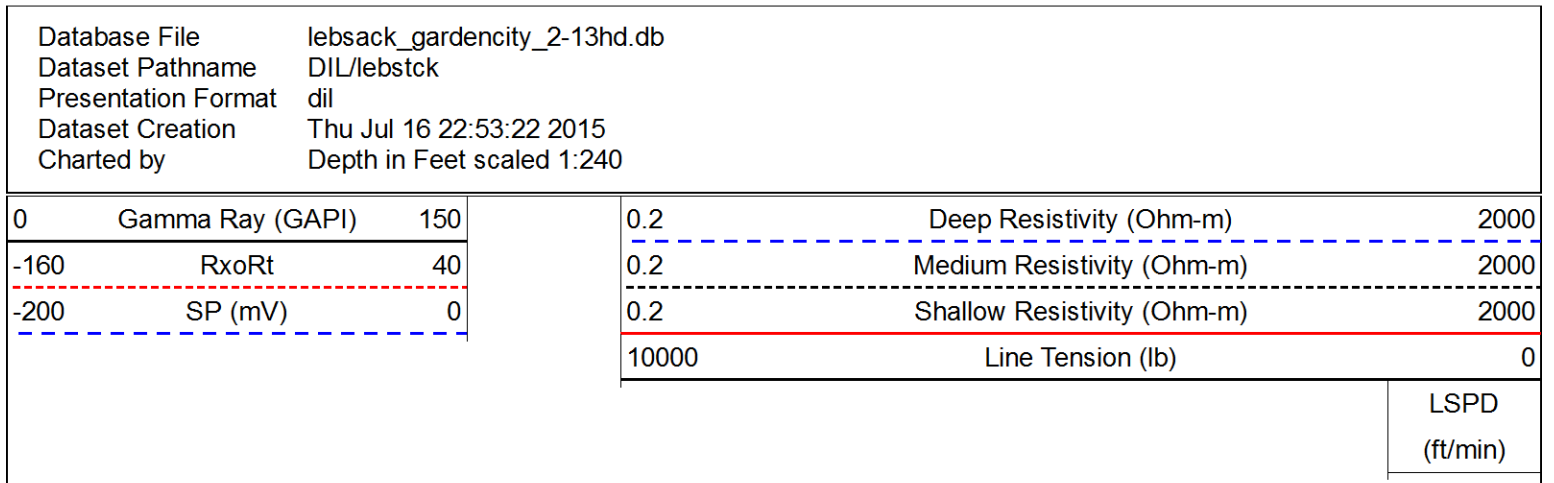
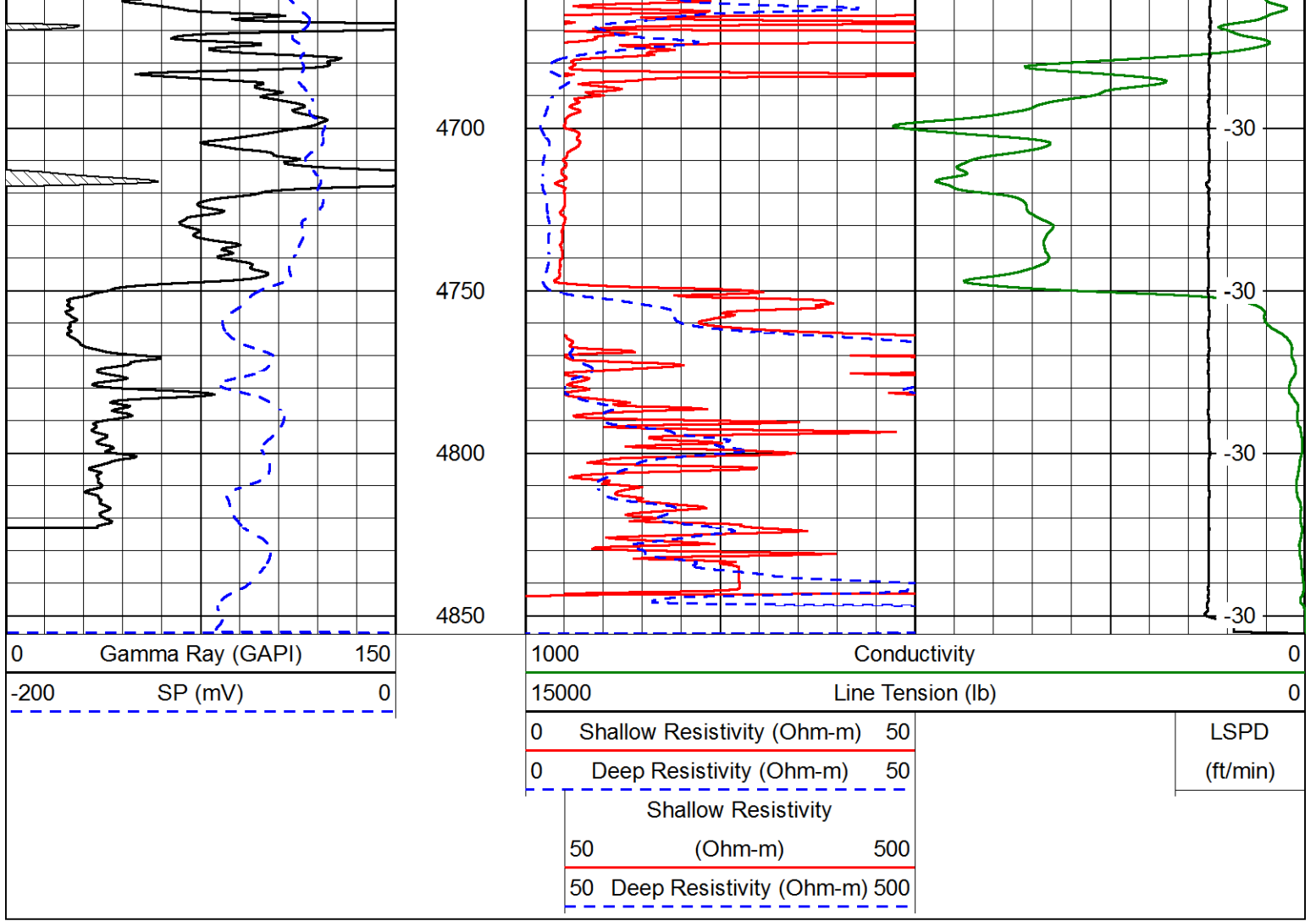


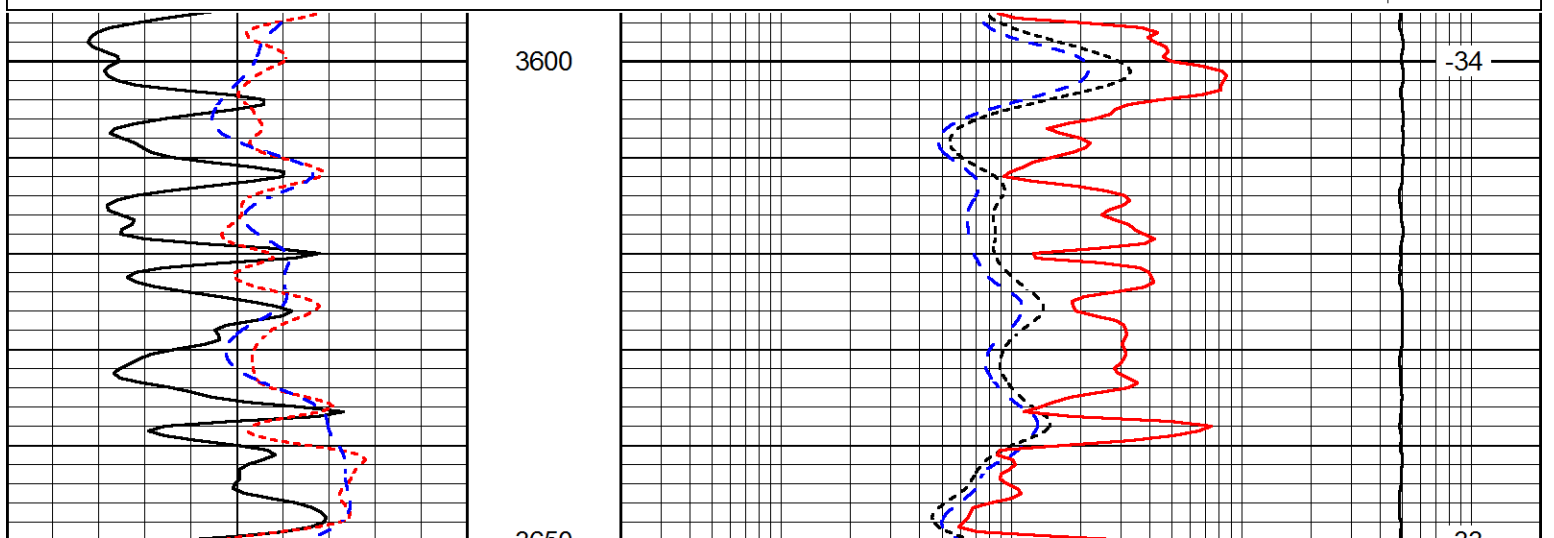
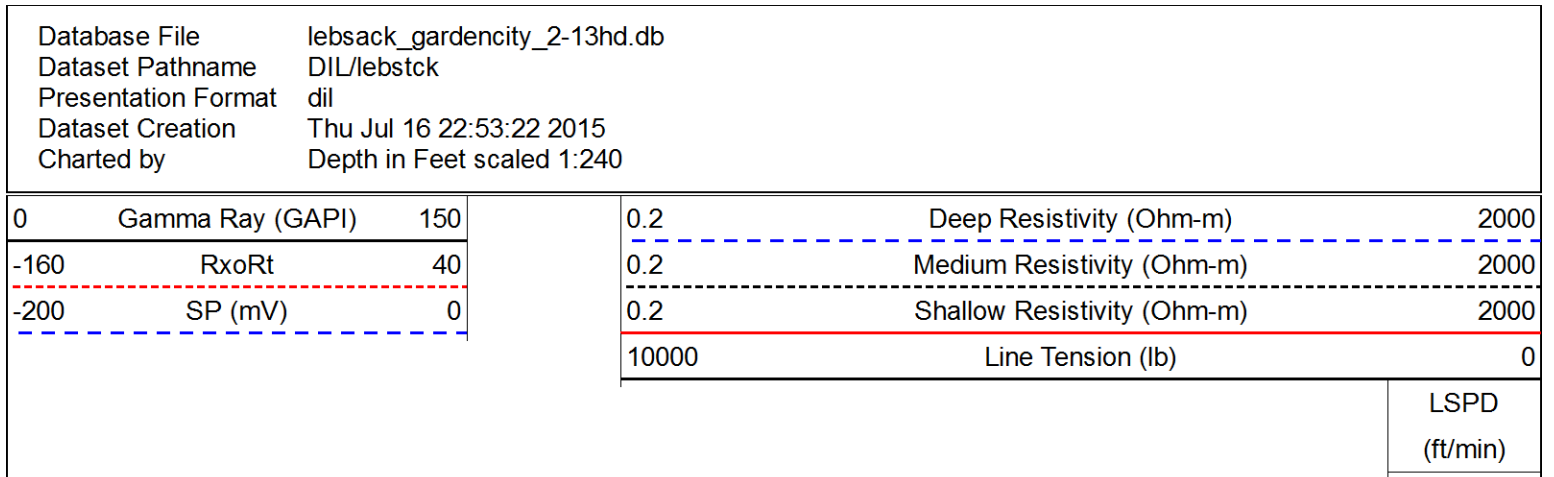
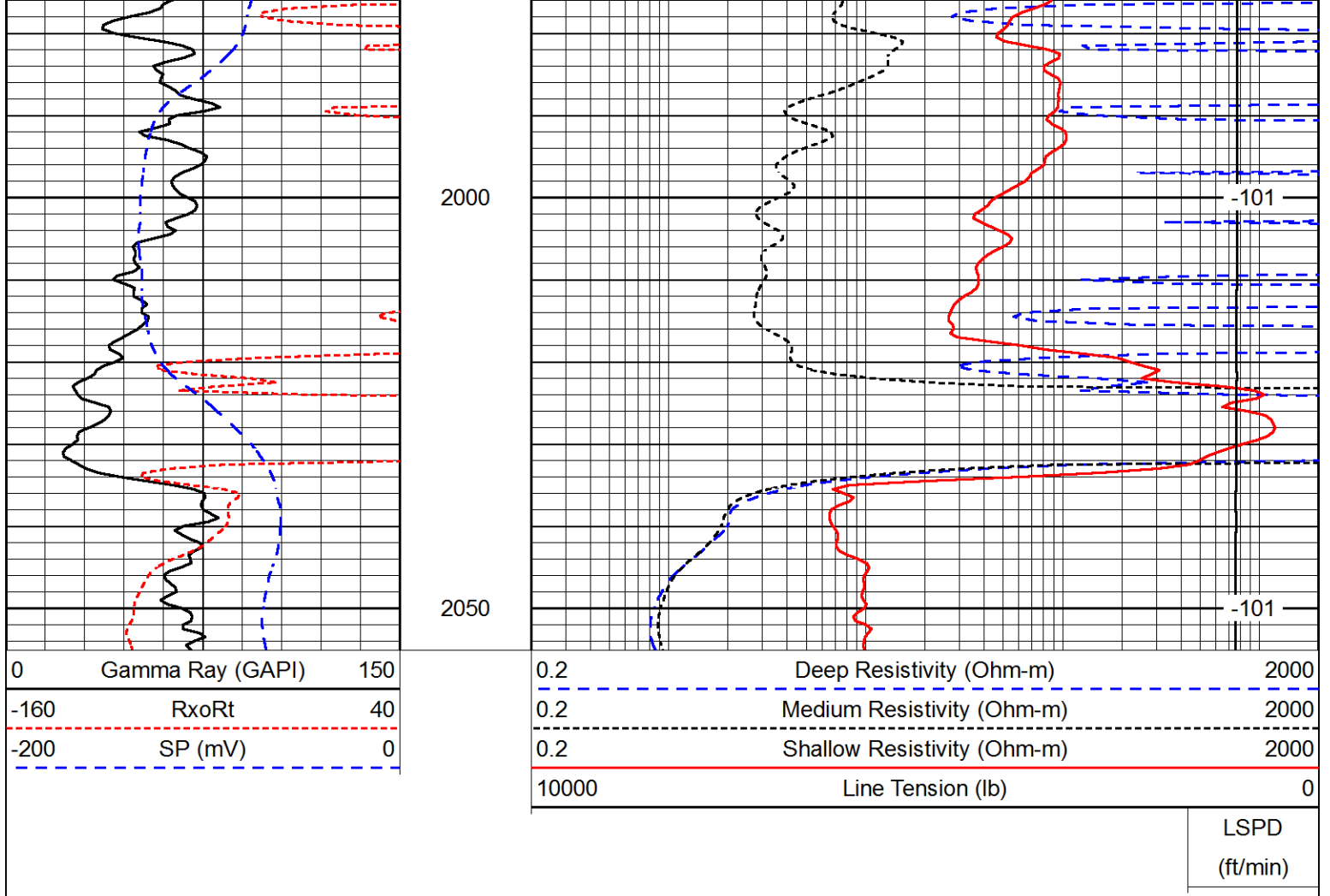


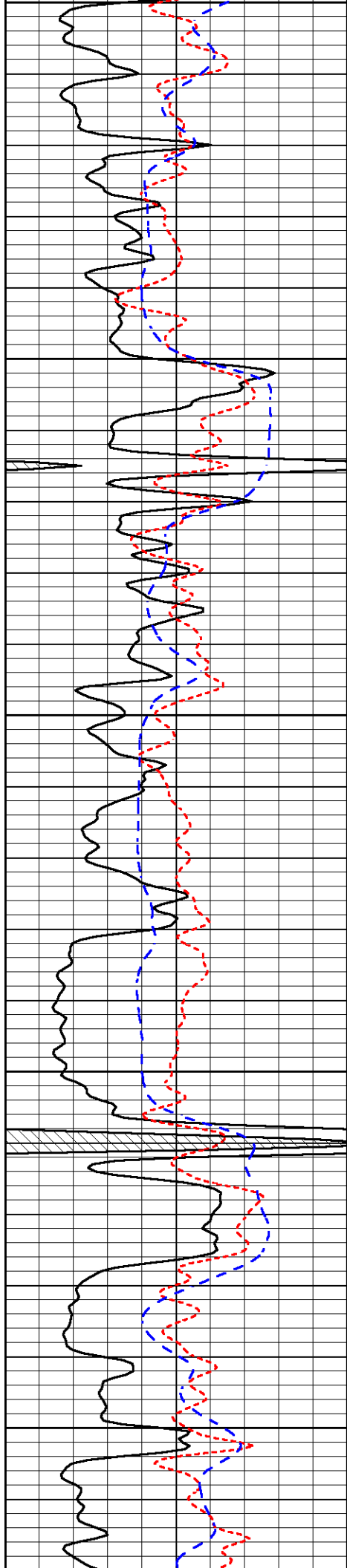
4150
4200
4250
4300
4350
4400
4450
4500
4550
4600
4650



-32
-33
-32
-31
-32
-31
-31
-30
-30
-30
-30







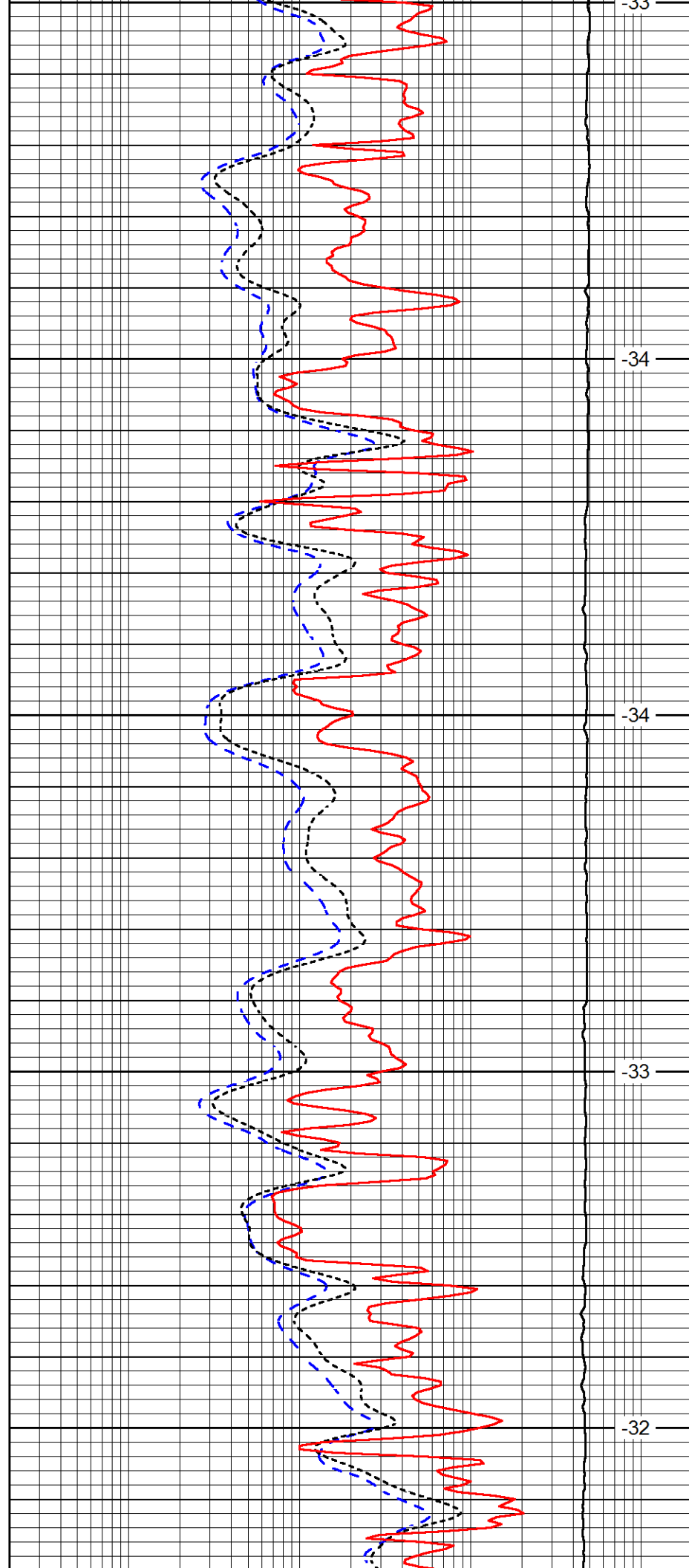
3650

3700

3750

3800

3850



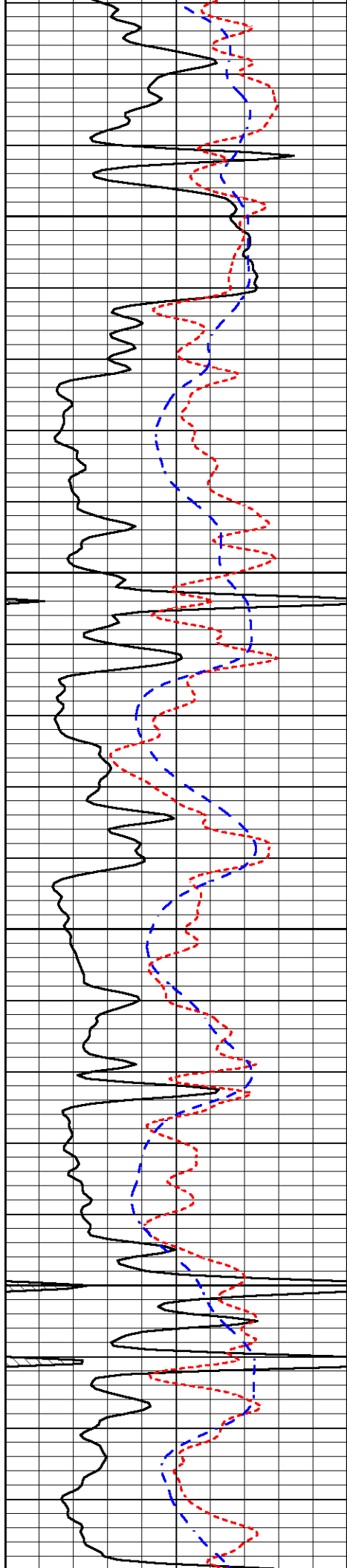
-33

-34

-34

-33

-32



3900

3950

4000

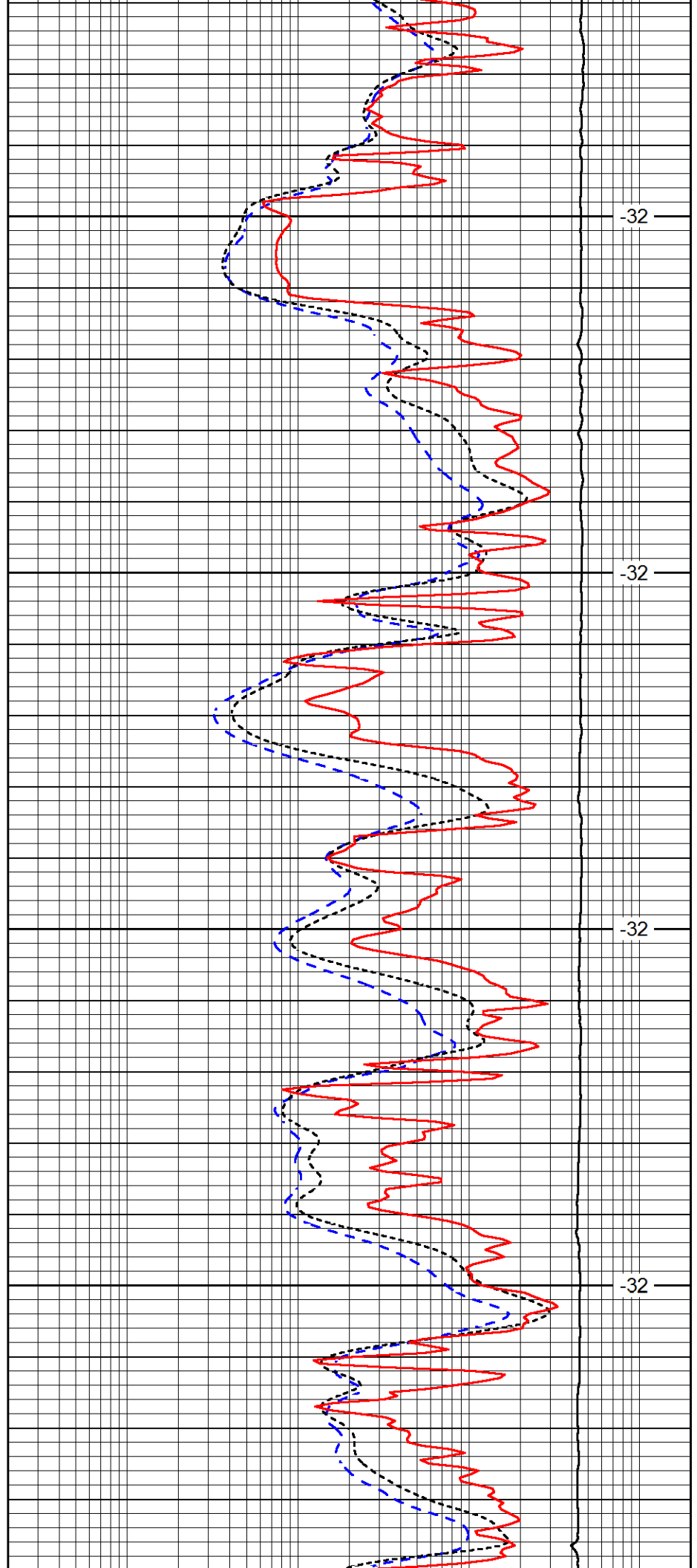
4050

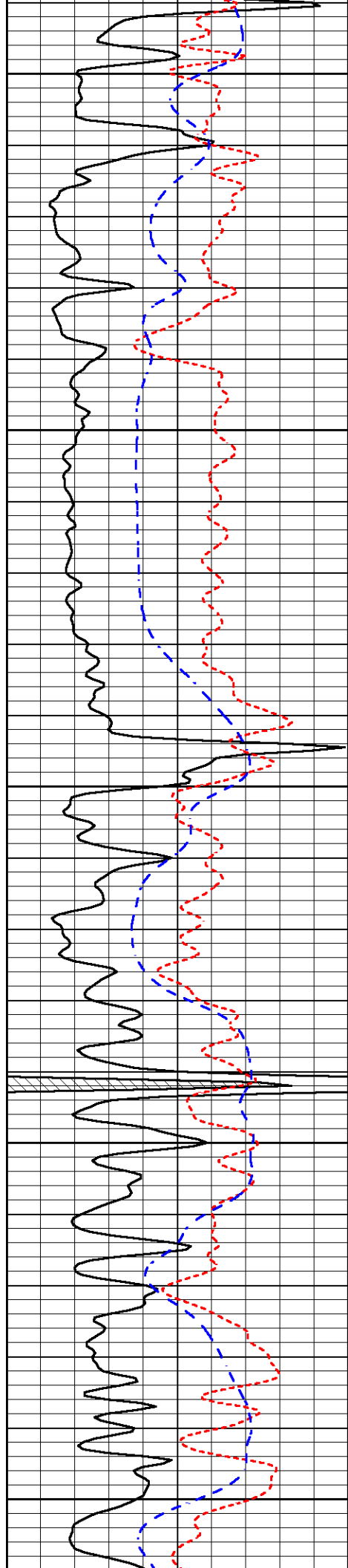
-32

-32

-32

-32





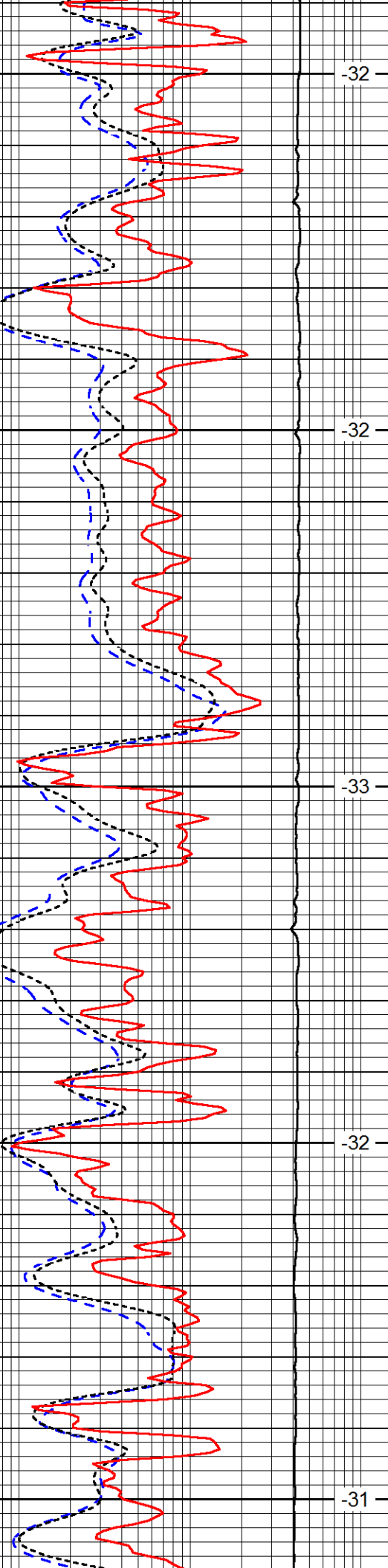
4100

4150

4200

4250

4300



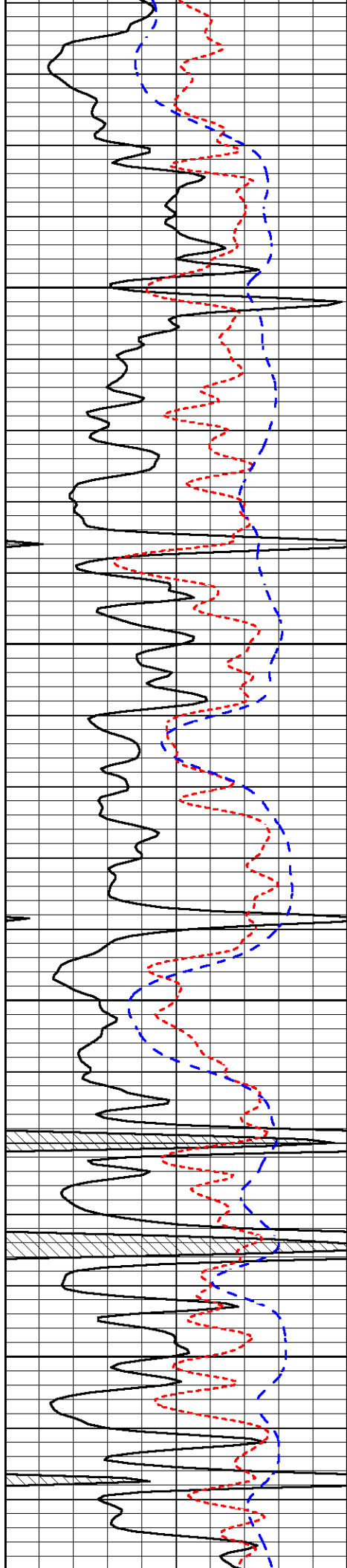
-32

-32

-33

-32

-31

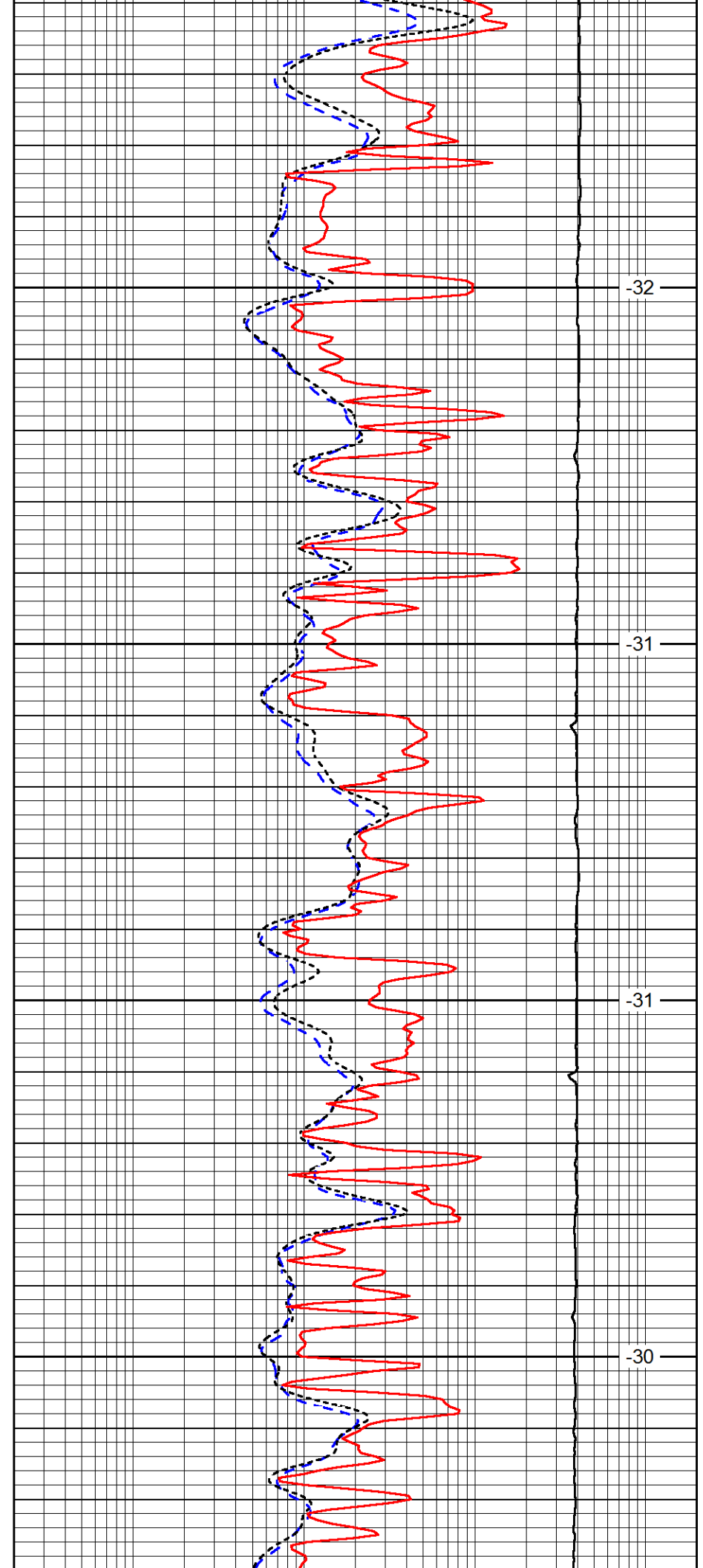


4350

4400

4450

4500

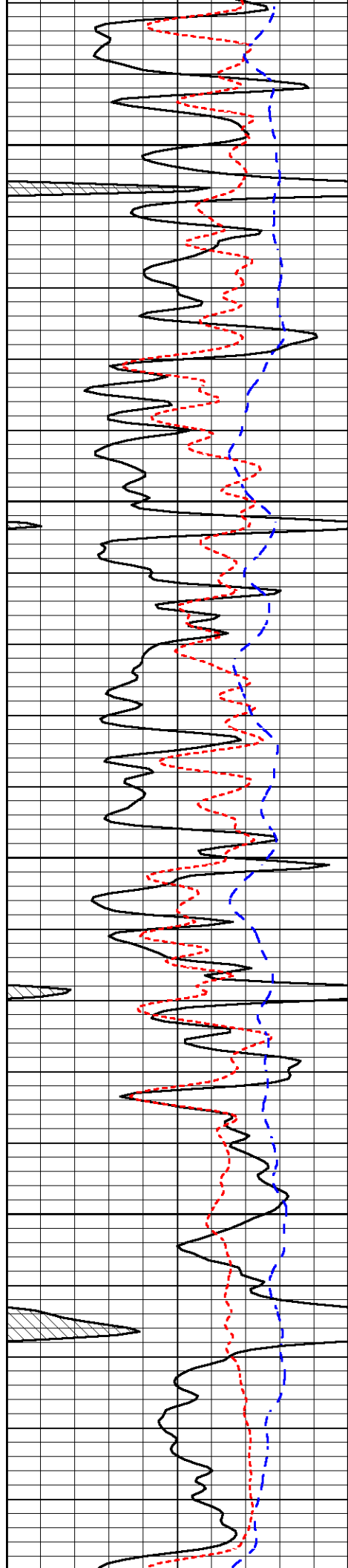


-32

-31

-31

-30



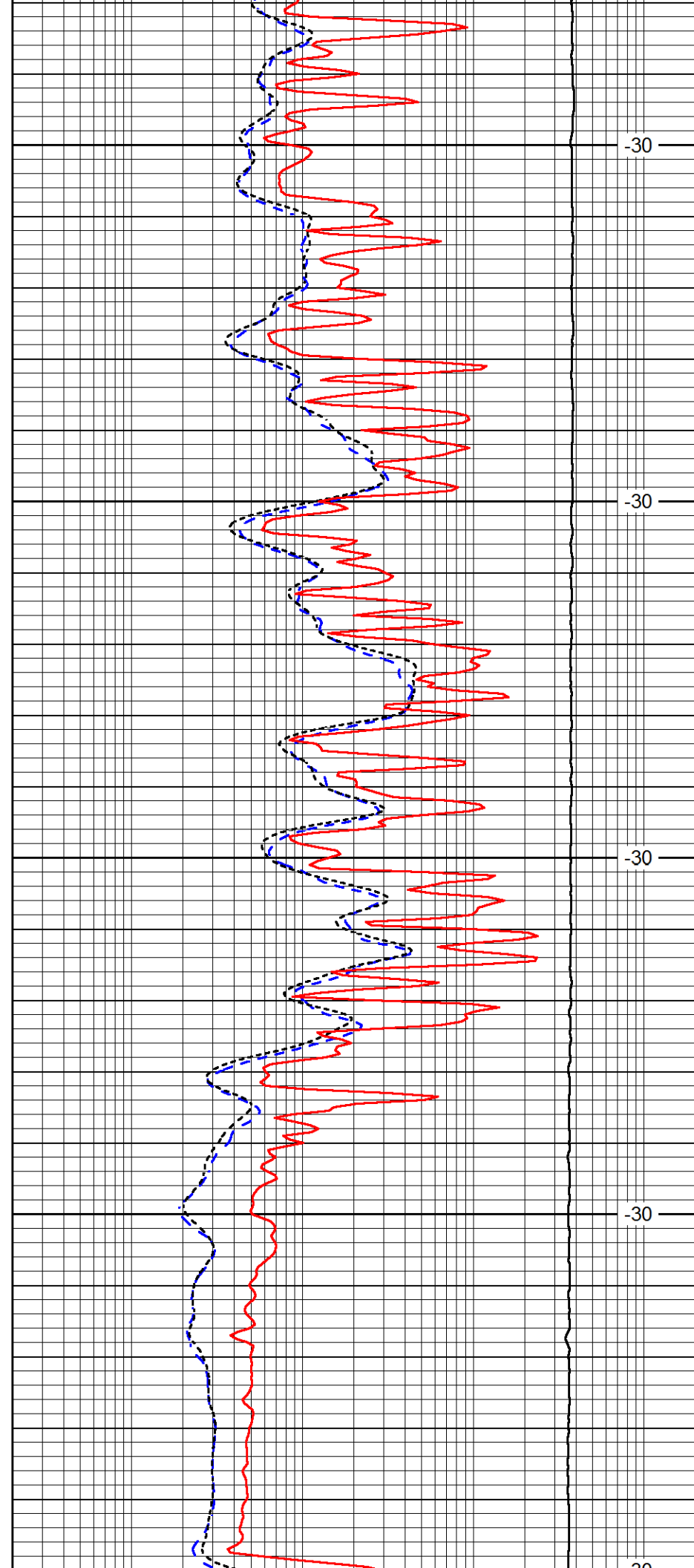
4550

4600

4650

4700

4750



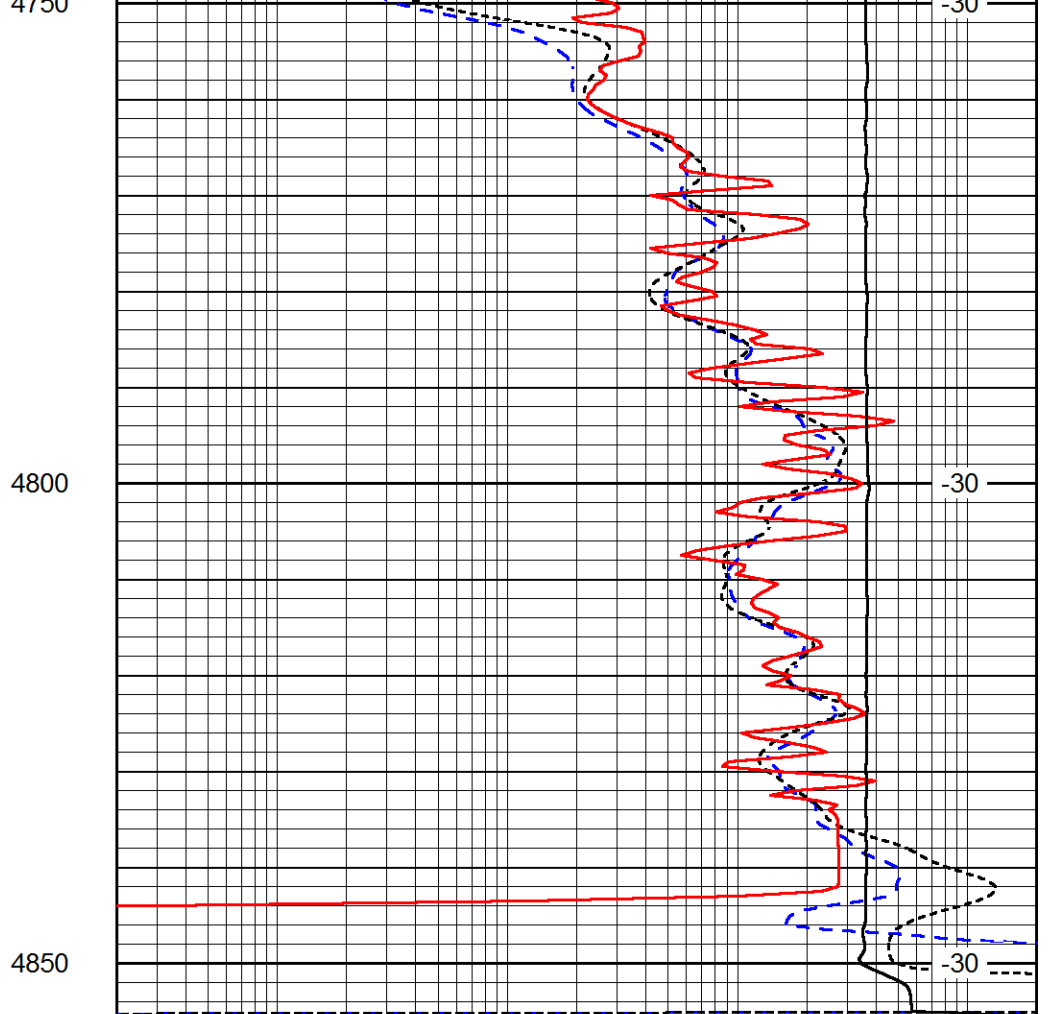
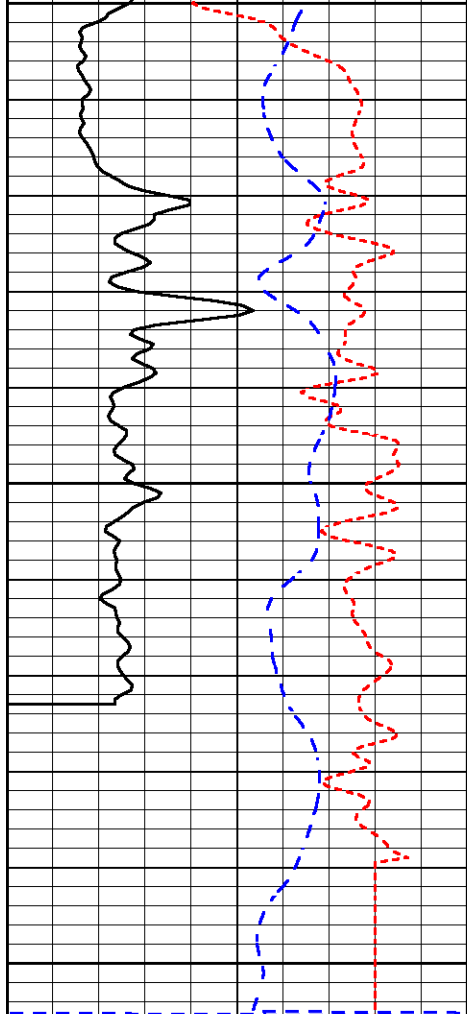
-30

-30

-30

-30

-30



0	Gamma Ray (GAPI)	150
-160	RxoRt	40
-200	SP (mV)	0

0.2	Deep Resistivity (Ohm-m)	2000
0.2	Medium Resistivity (Ohm-m)	2000
0.2	Shallow Resistivity (Ohm-m)	2000
10000	Line Tension (lb)	0

LSPD
(ft/min)