



MICRORESISTIVITY LOG

Company: LEBSACK OIL PRODUCTION, INC.
 Well: GARDEN CITY NO. 2-13
 Field: WEST EXT. DAMME
 County: FINNEY
 State: KANSAS

Company: LEBSACK OIL PRODUCTION, INC.
 Well: GARDEN CITY NO. 2-13
 Field: WEST EXT. DAMME
 County: FINNEY
 State: KANSAS

Location: API #: 15-055-22,417-00-00
 E2-E2-W2-NE
 1,320' FNL & 1,420' FEL
 SEC 13 TWP 22S RGE 34W
 Permanent Datum: GROUND LEVEL Elevation 2912
 Log Measured From: KELLY BUSHING
 Drilling Measured From: KELLY BUSHING
 Other Services: CNL/CDL DIL
 Elevation: K.B. 2925, D.F. N/A, G.L. 2912

| | |
|------------------------|-------------|
| Date | 7/16/2015 |
| Run Number | TWO |
| Depth Driller | 4850 |
| Depth Logger | 4851 |
| Bottom Logged Interval | 4850 |
| Top Log Interval | 3600 |
| Casing Driller | 8,625 @ 418 |
| Casing Logger | 419 |
| Bit Size | 7.875 |
| Type Fluid in Hole | CHEMICAL |
| Salinity, ppm CL | 3300 |
| Density / Viscosity | 9.4 48 |
| pH / Fluid Loss | 10.5 8.8 |
| Source of Sample | Flowline |
| Rm @ Meas. Temp | .65 @ 78 |
| Rmt @ Meas. Temp | .49 @ 78 |
| Rmc @ Meas. Temp | .88 @ 78 |
| Source of Rmf / Rmc | Charts |
| Rm @ BHT | .41 @ 125 |
| Operating Rig Time | 3 1/2 HOURS |
| Max Rec. Temp. F | 125 |
| Equipment Number | 108 |
| Location | Hays |
| Recorded By | J. LONG |
| Witnessed By | JOSH AUSTIN |

<<< Fold Here >>>

All interpretations are opinions based on inferences from electrical or other measurements and Pioneer Wireline Services, LLC cannot and does not guarantee the accuracy or correctness of any interpretation, and Pioneer Wireline Services, LLC will not be liable or responsible for any loss, costs, damages, or expenses incurred or sustained by anyone resulting from any interpretation made by any of our officers, agents or employees.

Comments

N/A DENOTES NOT AVAILABLE OR NON-APPLICABLE.
 SCOTT CITY, SOUTH TO TENNIS ROAD, 6 WEST, 1 1/2 SOUTH, WEST INTO

Log Measured From: KELLY BUSHING 13 Ft. Above Permanent Datum

THANK YOU FOR USING PIONEER ENERGY SERVICES
www.pioneerenergy.com 785-625-3858

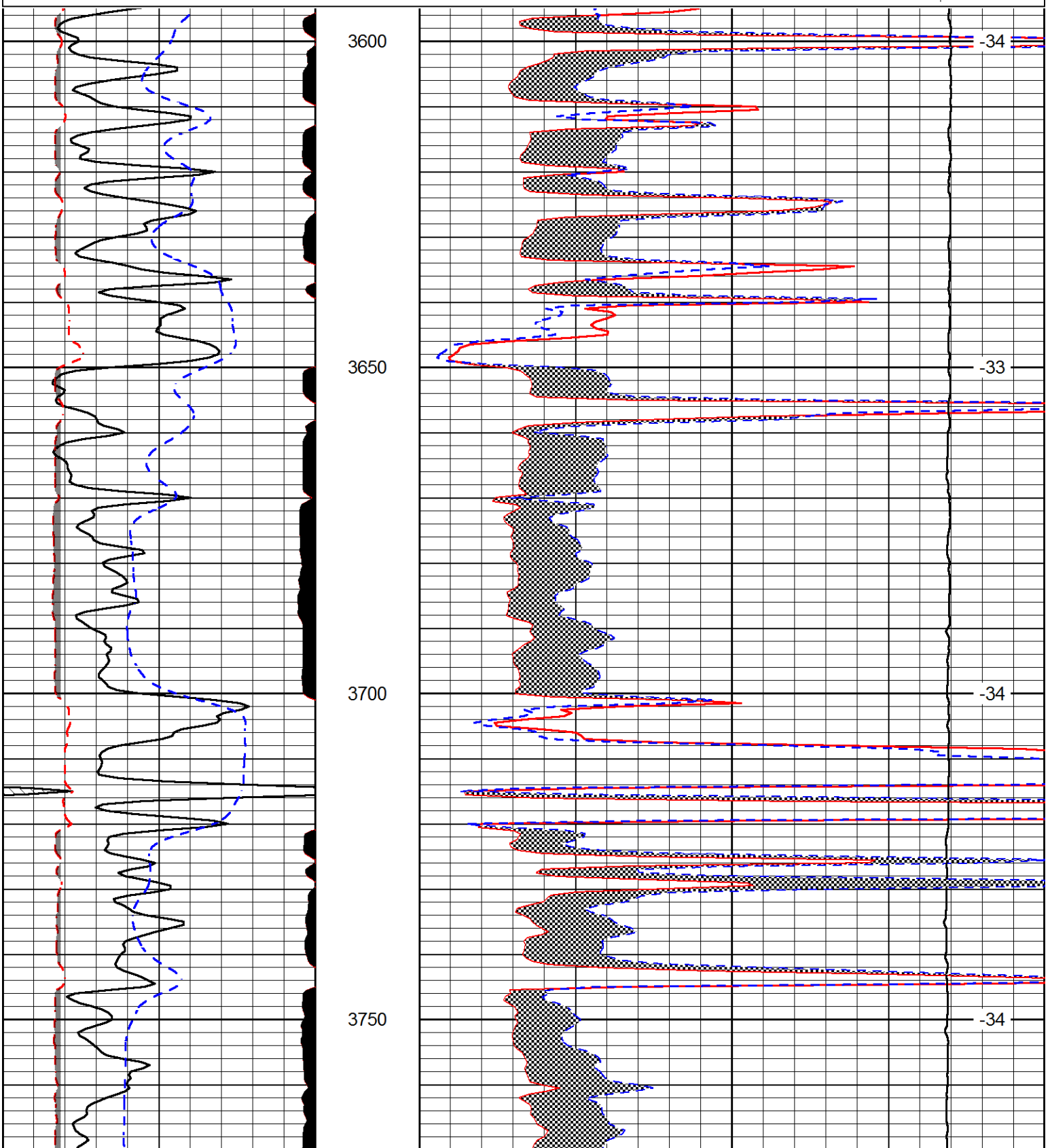
| | |
|---|--|
| Your Pioneer Energy Services Crew Engineer: J. LONG Operator: Operator: Operator: | This Log Record Was Witnessed By Primary Witness: JOSH AUSTIN Secondary Witness: Secondary Witness: Secondary Witness: |
|---|--|

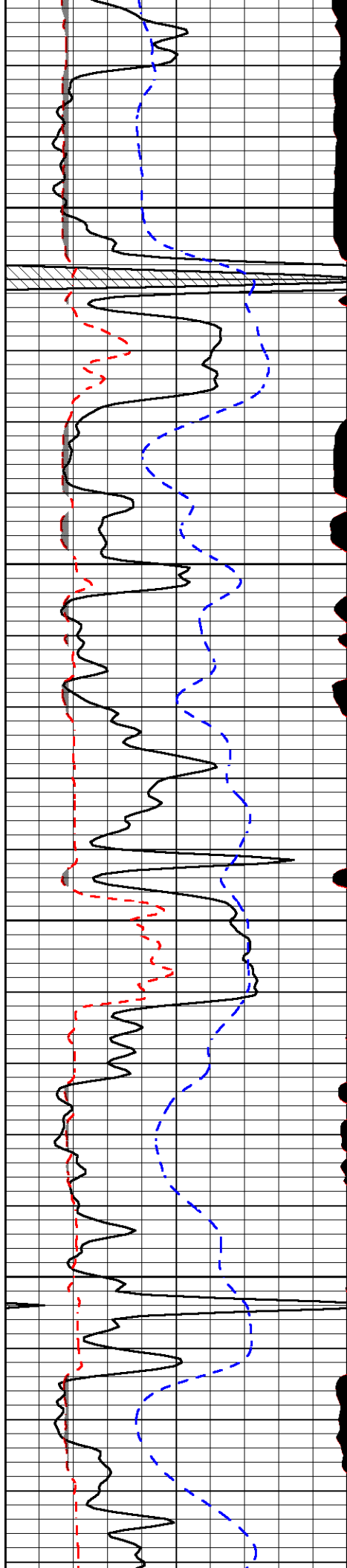
Database File lebsack_gardencity_2-13hd.db
 Dataset Pathname DIL/lebstck
 Presentation Format micro
 Dataset Creation Thu Jul 16 22:53:22 2015
 Charted by Depth in Feet scaled 1:240

| | | |
|-------|------------------|-------|
| 0 | Gamma Ray (GAPI) | 150 |
| 6 | MCAL (in) | 16 |
| 2.875 | Mud Cake (in) | 7.875 |
| -200 | SP (mV) | 0 |

| | | |
|-------|-----------------------------|----|
| 0 | Micro Inverse 1 X 1 (Ohm-m) | 40 |
| 0 | Micro Normal 2" (Ohm-m) | 40 |
| 10000 | Line Weight (lb) | 0 |

LSPD
(ft/min)



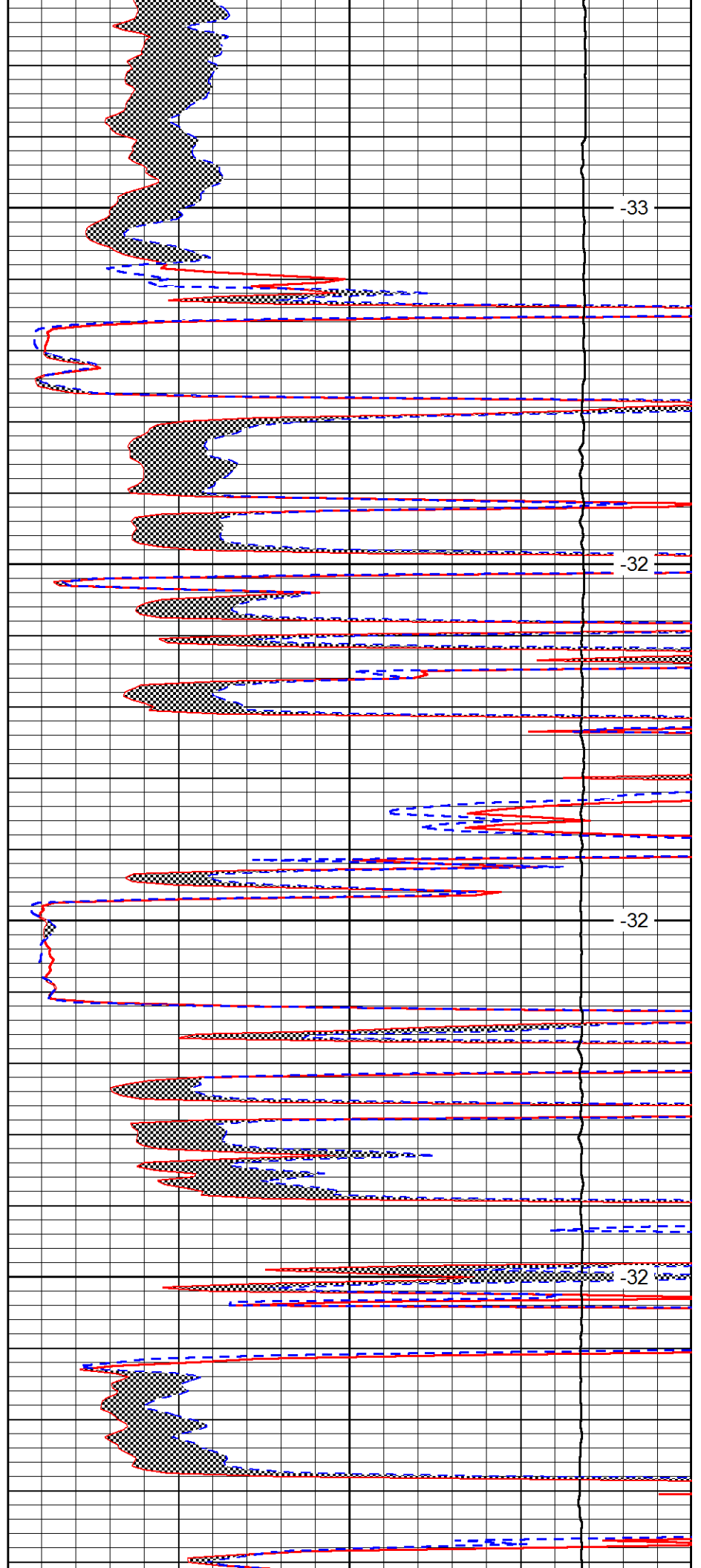


3800

3850

3900

3950

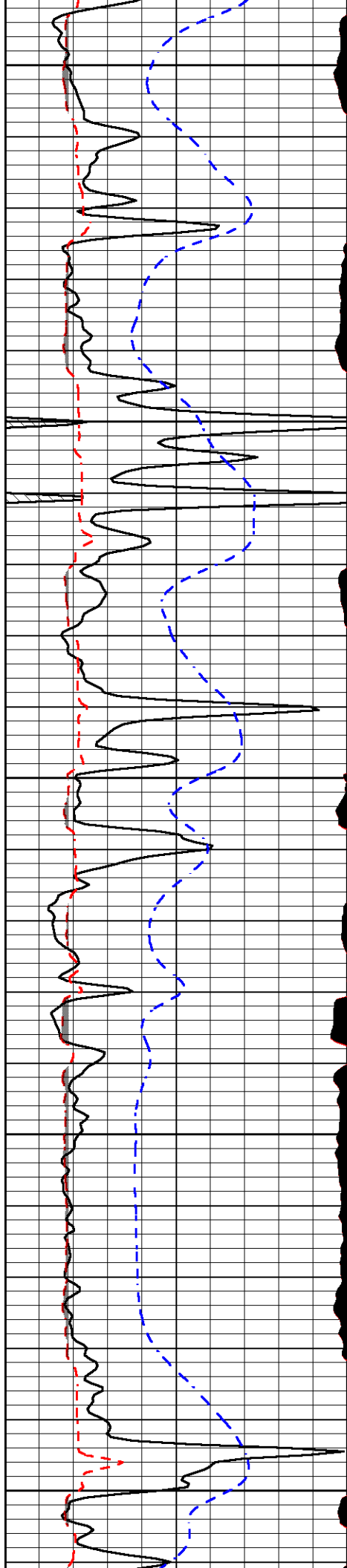


-33

-32

-32

-32



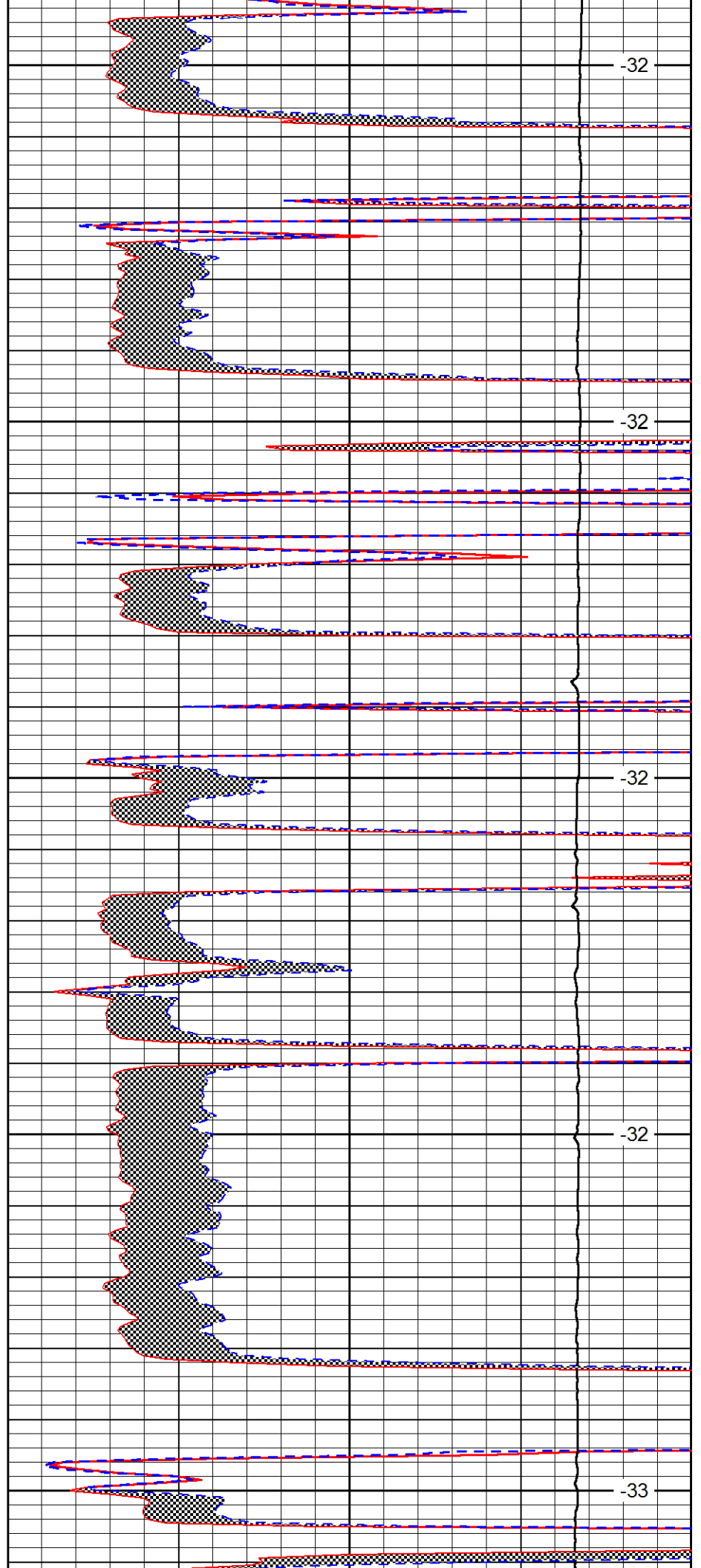
4000

4050

4100

4150

4200



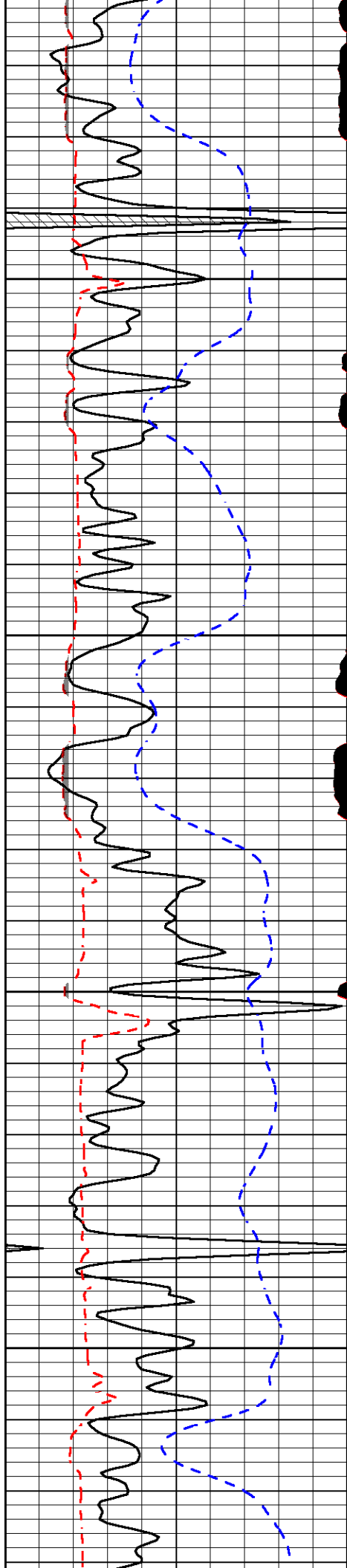
-32

-32

-32

-32

-33

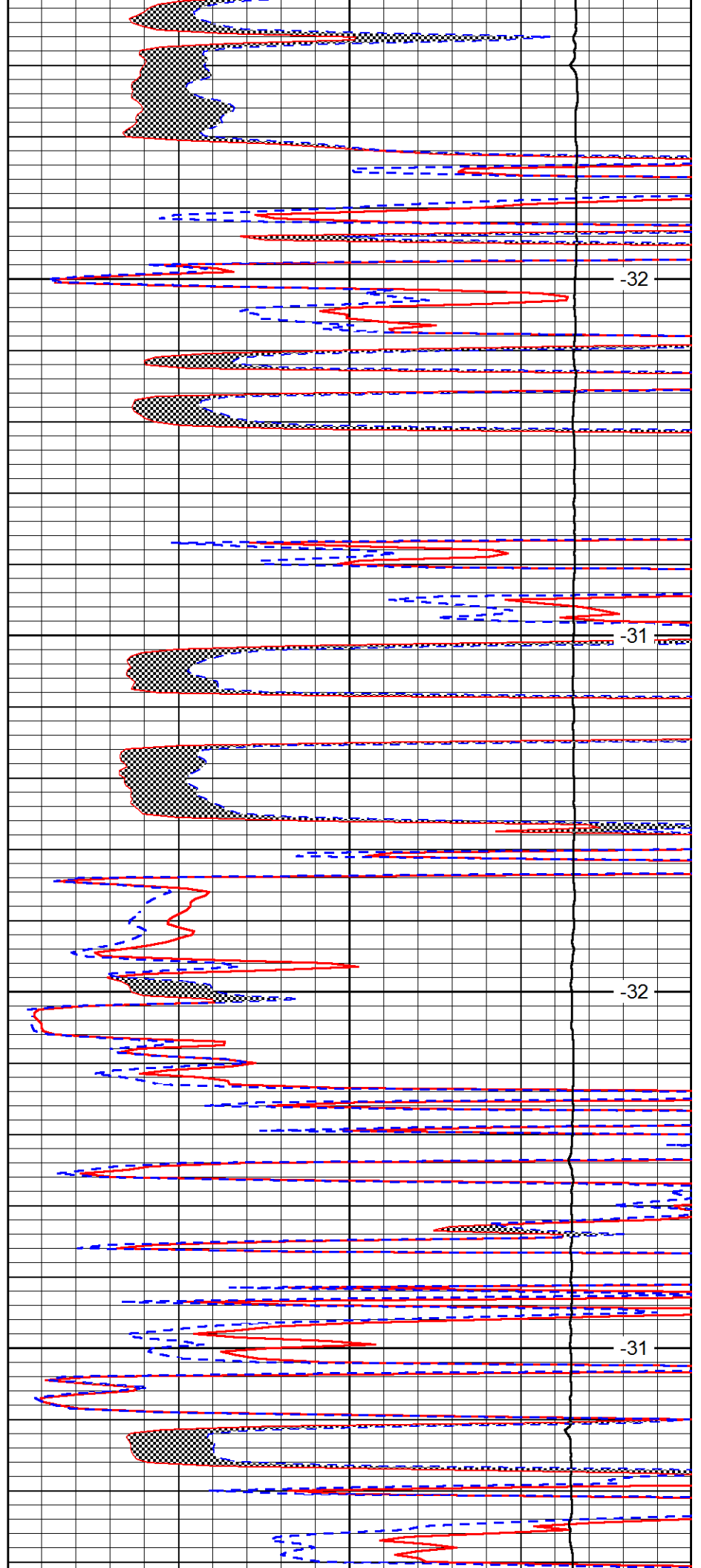


4250

4300

4350

4400

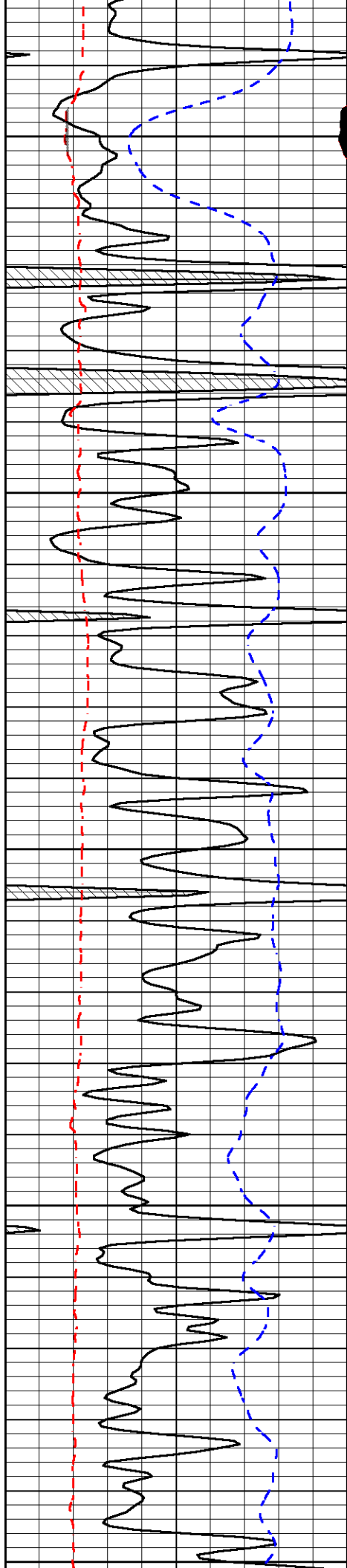


-32

-31

-32

-31



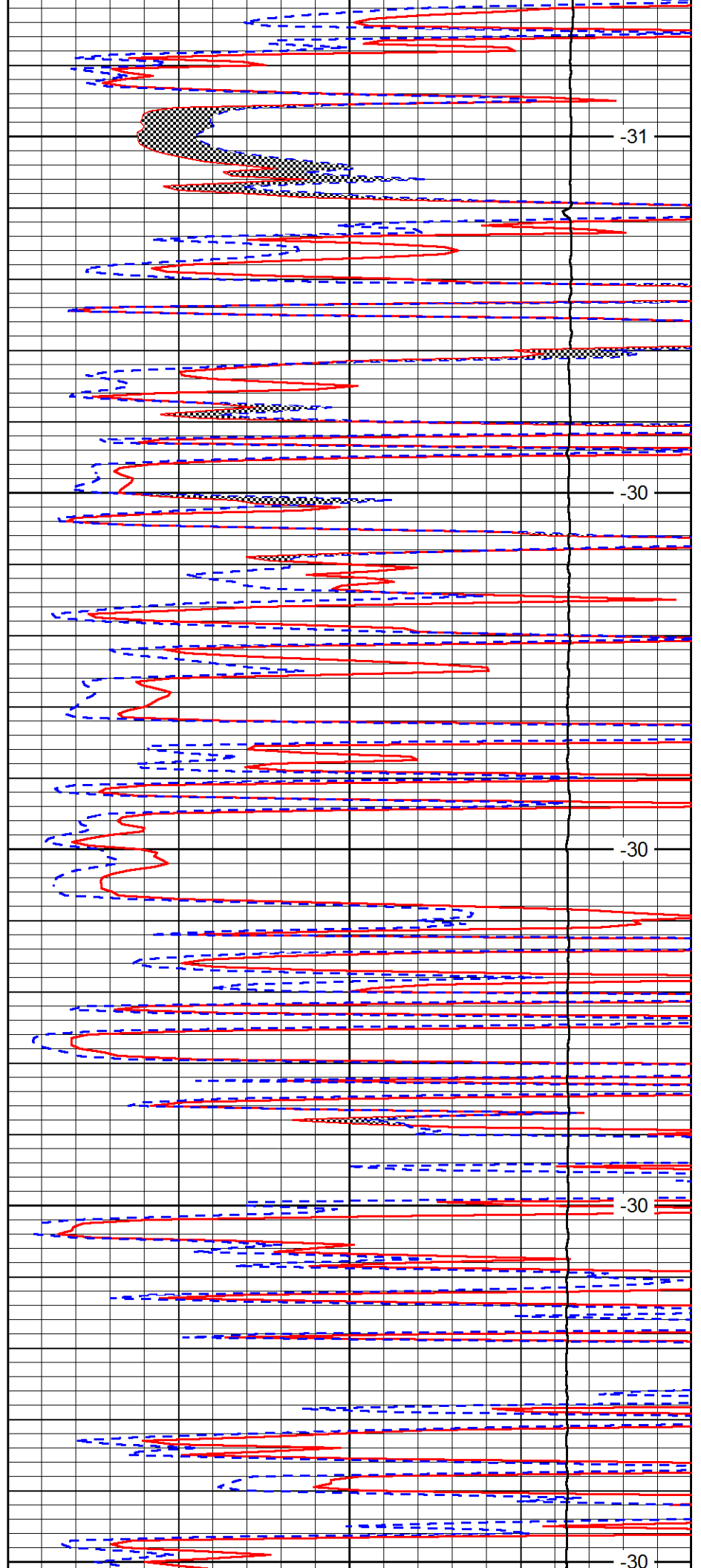
4450

4500

4550

4600

4650



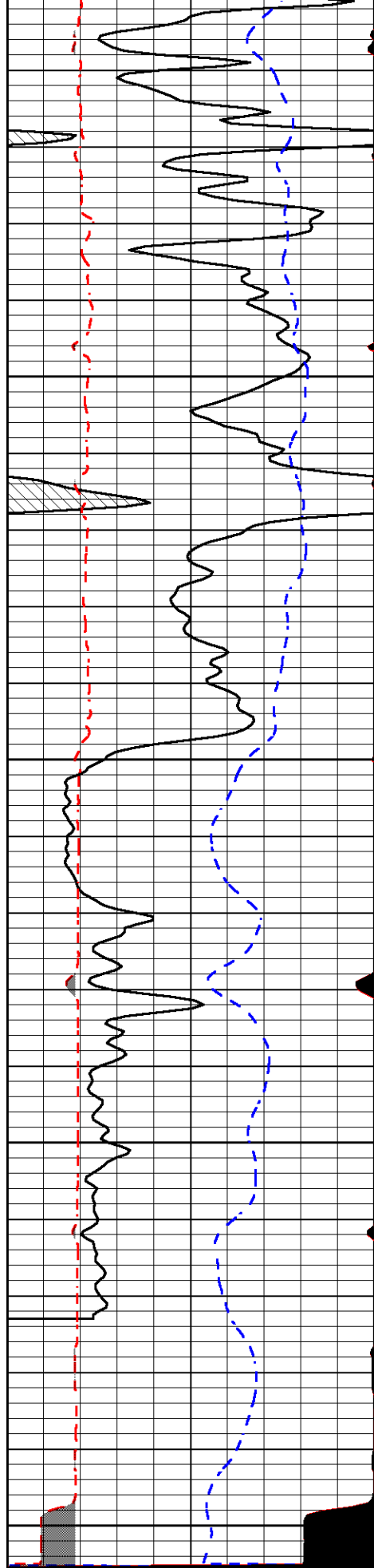
-31

-30

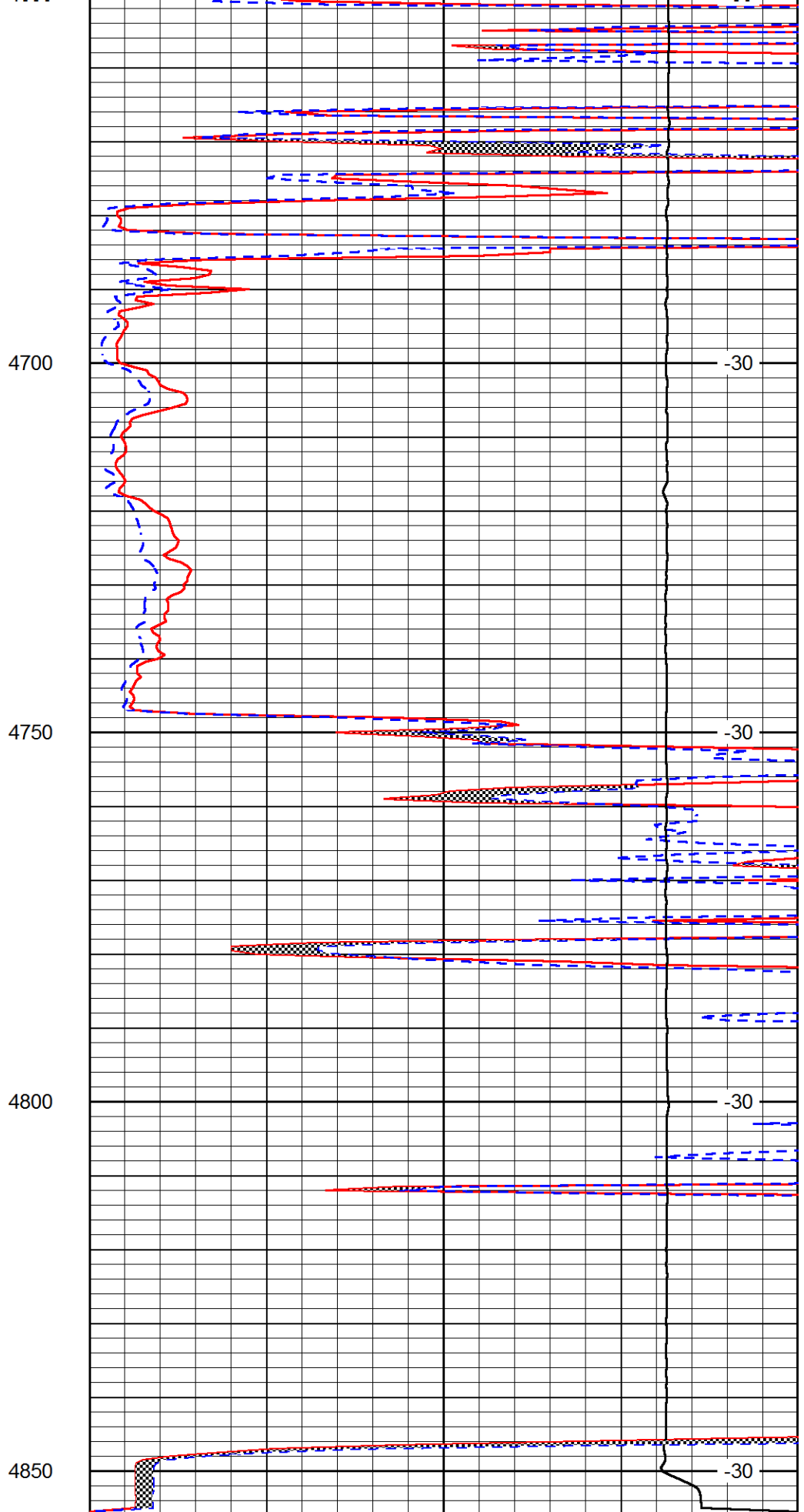
-30

-30

-30



| | | |
|-------|------------------|-------|
| 0 | Gamma Ray (GAPI) | 150 |
| 6 | MCAL (in) | 16 |
| 2.875 | Mud Cake (in) | 7.875 |



| | | |
|-------|-----------------------------|----|
| 0 | Micro Inverse 1 X 1 (Ohm-m) | 40 |
| 0 | Micro Normal 2" (Ohm-m) | 40 |
| 10000 | Line Weight (lb) | 0 |

-200 SP (mV) 0

LSPD
(ft/min)