



**MIDWEST SURVEYS**  
 LOGGING - PERFORATING - CONSULTING SERVICES  
 P.O. Box 68, Osawatomie, KS 66064  
 913 / 755 - 2128

**GAMMA RAY / NEUTRON / CCL**

File No.

Company Bobcat Oilfield Services, Inc.  
 Well Alva Schendel No. 17W-17

Field Paola / Rantoul

County Miami State Kansas

Location 2574 FSL & 4689' FEL  
 NE-NW-NW-SW

Other Services Perforate

Sec. 24 Permament Datum  
 Log Measured From Drilling Measured From

Date 09-26-2017

Run Number One  
 Depth Drier 713.5  
 Depth Logger 712.5  
 Bottom Logged Interval 20.0  
 Top Log Interval

Type Fluid Water  
 Density / Viscosity NA  
 Salinity - PPM Cl NA  
 Max Recorded Temp NA  
 Estimated Cement Top 0.0  
 Equipment No. Location 107 Osawatomie  
 Recorded By Steve Wandisch  
 Witnessed By Rob Elmerhart

BORE-HOLE RECORD  
 RUN No. BIT FROM TO SIZE WGT. FROM TO  
 One 8.75" 0.0 20.0 6.00" 15.0# 0.0 20.0  
 Two 5.625" 20.0 721.0 2.875" 6.5# 0.0 714.0

CASING RECORD  
 TO 714.0

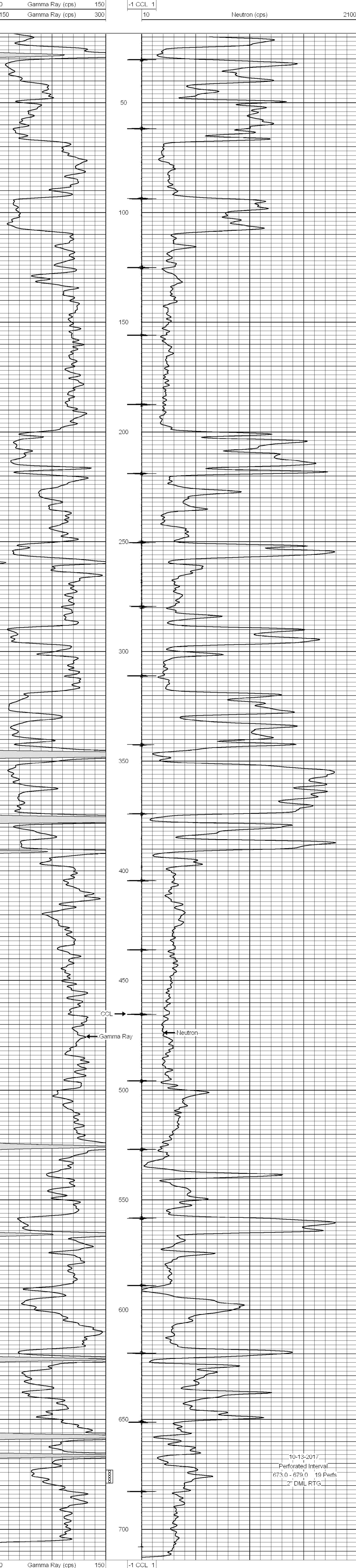
<<< Fold Here >>>

All interpretations are opinions based on inferences from electrical or other measurements and we cannot and do not guarantee the accuracy or correctness of any interpretation, and we shall not, except in the case of gross or willful negligence on our part, be liable or responsible for any loss, costs, damages, or expenses incurred or sustained by anyone resulting from any interpretation made by any of our officers, agents or employees. These interpretations are also subject to our general terms and conditions set out in our current Price Schedule.

Comments

Drilling Contractor :  
 Dale Jackson Production Company

Database File: schendel alva 17w-17.db  
 Dataset Pathname: pass1  
 Presentation Format: gr-n-ccl  
 Dataset Creation: Tue Sep 26 12:10:32 2017 by Log SCH 111116  
 Charted by: Depth in Feet scaled 1:240



10-13-2017  
 Perforated Interval  
 673.0 - 679.0 19 Perfs  
 2" DML RTG