



SONIC LOG

Company L.D. DRILLING, INC.
Well #1-13 KNOTTSS
Field PFAFF EAST
County NESS
State KANSAS

Company L.D. DRILLING, INC.
Well #1-13 KNOTTSS
Field PFAFF EAST
County NESS
State KANSAS

Location: AP1 #: 15-135-25975-0000
690' FSL & 1867' FEL
SW - NE - SW - SE
Permanent Datum GROUND LEVEL Elevation 2190
Log Measured From KELLY BUSHING 5' A.G.L.
Drilling Measured From KELLY BUSHING
Elevation
K.B. 2195
D.F. 2193
G.L. 2190

Date	9/30/17
Run Number	TWO
Depth Driller	4450
Depth Logger	4450
Bottom Logged Interval	4442
Top Log Interval	200
Casing Driller	8 5/8"@244'
Casing Logger	244
Bit Size	7 7/8"
Type Fluid in Hole	CHEMICAL MUD
Density / Viscosity	9.4/45
pH / Fluid Loss	9.0/11.2
Source of Sample	FLOWLINE
Rim @ Meas. Temp	.500@80F
Rmf @ Meas. Temp	.375@80F
Rmc @ Meas. Temp	.600@80F
Source of Rmf / Rmc	MEASUREMENT
Rim @ BHT	.333@120F
Time Circulation Stopped	4.5 HOURS
Time Logger on Bottom	10:15 P.M.
Maximum Recorded Temperature	120F
Equipment Number	922339
Location	HAYS, KANSAS
Recorded By	JEFF LUEBBERS
Witnessed By	KIM SHOEMAKER

<<< Fold Here >>>

All interpretations are opinions based on inferences from electrical or other measurements and we cannot and do not guarantee the accuracy or correctness of any interpretation, and we shall not, except in the case of gross or willful negligence on our part, be liable or responsible for any loss, costs, damages, or expenses incurred or sustained by anyone resulting from any interpretation made by any of our officers, agents or employees. These interpretations are also subject to our general terms and conditions set out in our current Price Schedule.

Comments

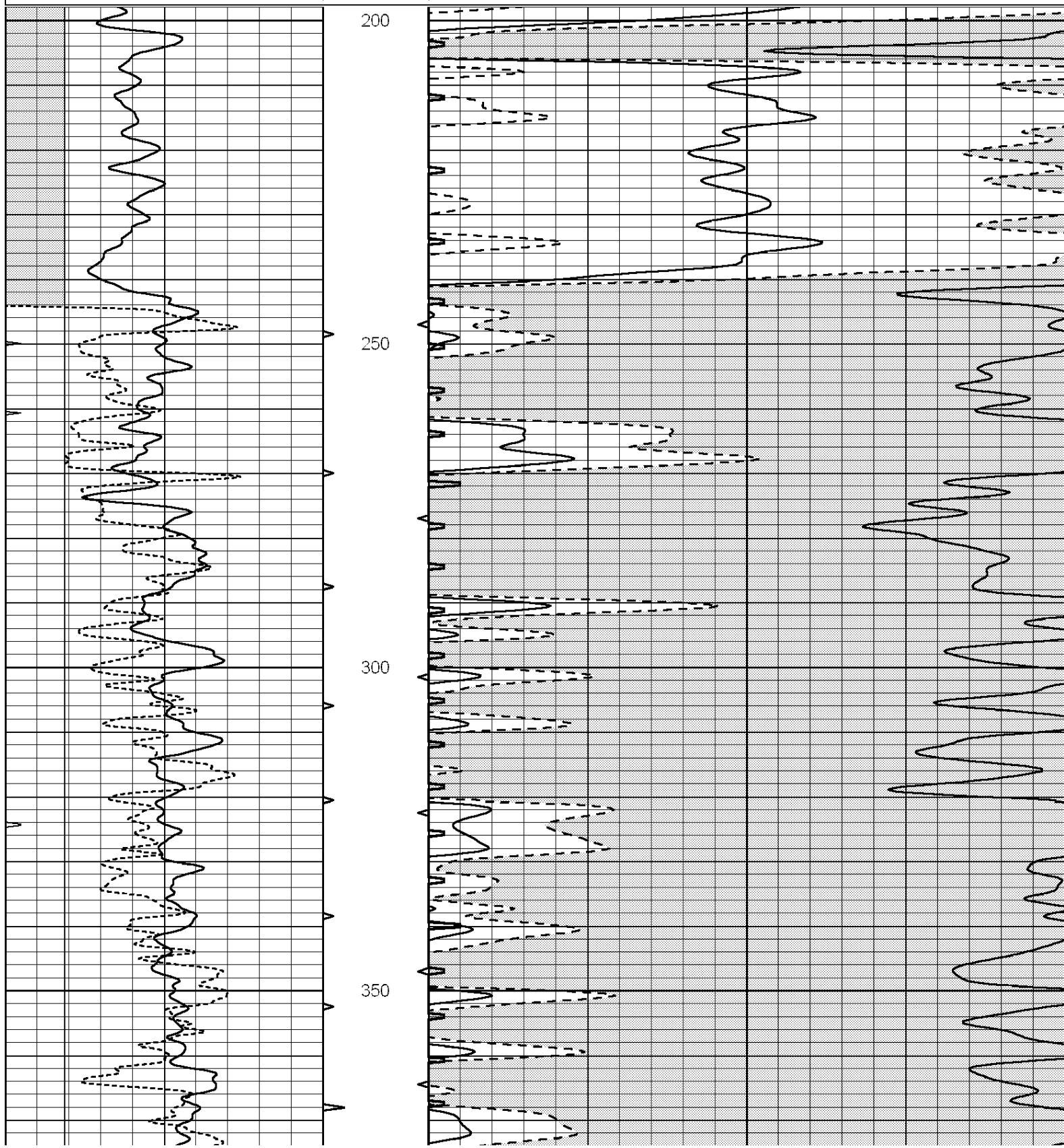
THANK YOU FOR USING ELI WIRELINE HAYS, KANSAS (785) 628-6395
DIRECTIONS
NESS CITY, KS., 3E. ON HWY 96 TO "RD. W", 4S., 1/2E., N. INTO

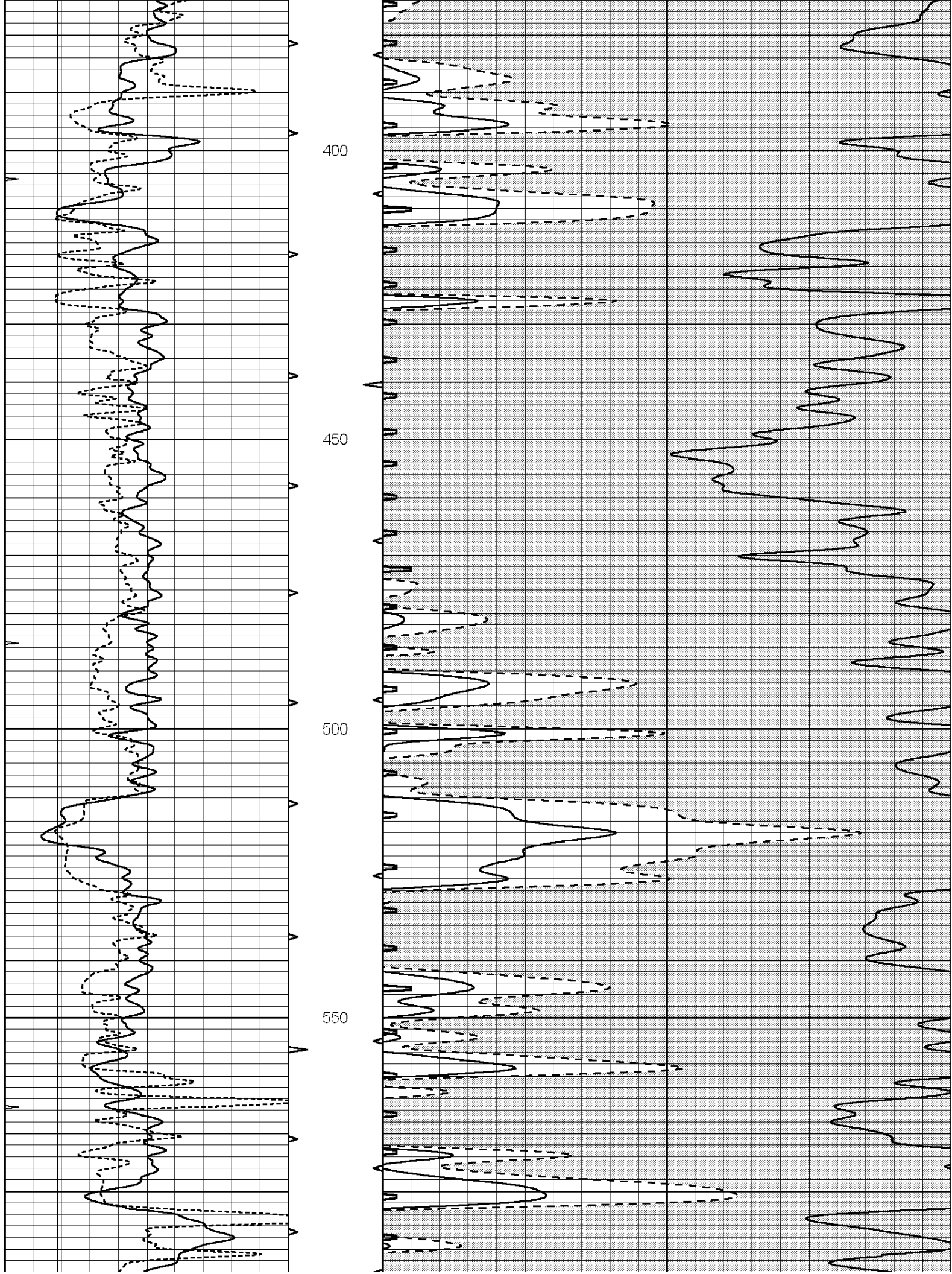


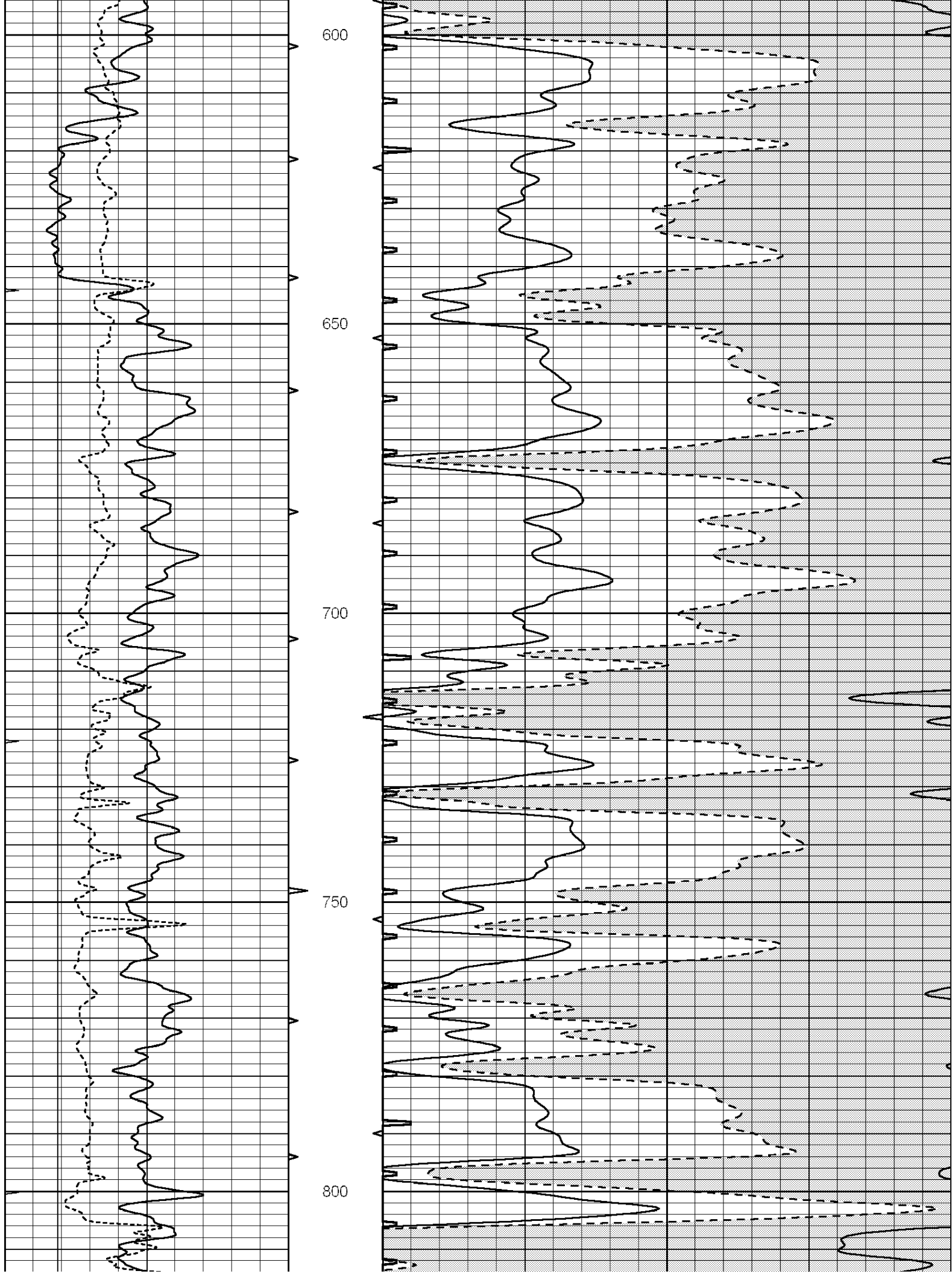
MAIN SECTION

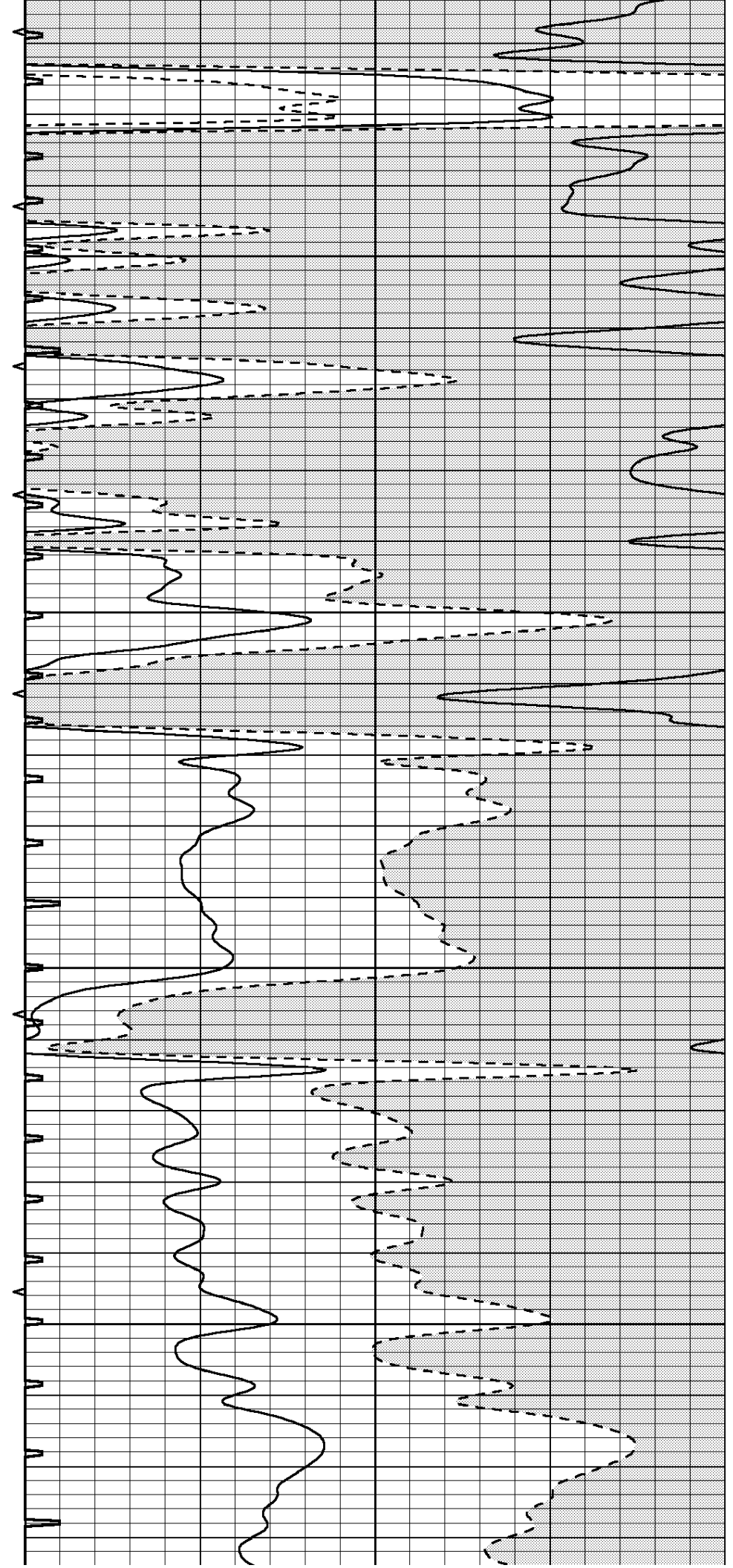
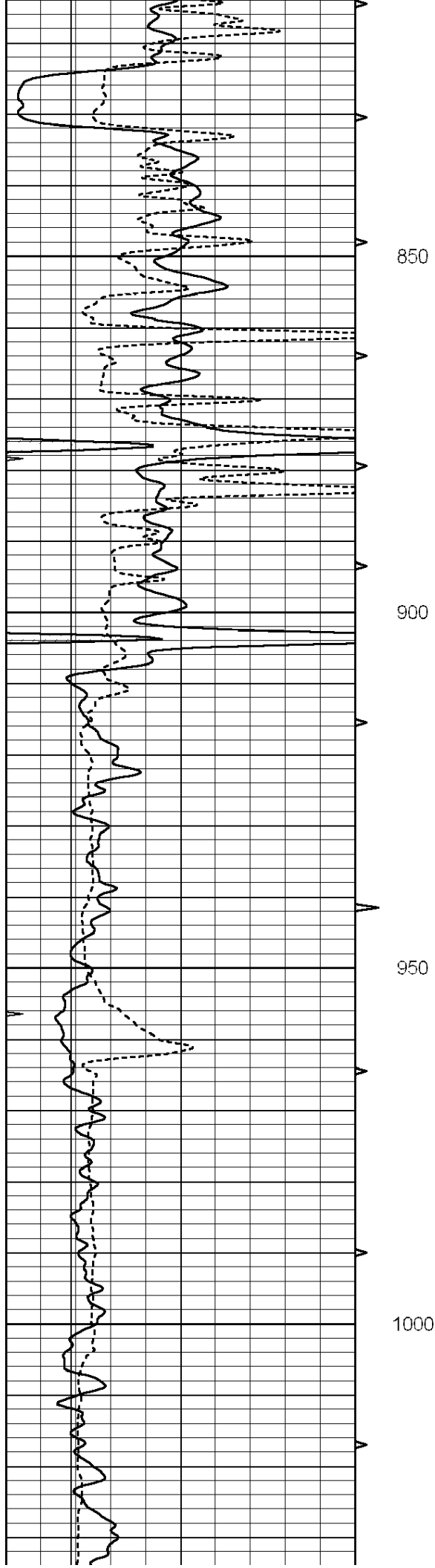
Database File: 1831pe.db
 Dataset Pathname: pass6.4
 Presentation Format: slt
 Dataset Creation: Sat Sep 30 23:15:58 2017
 Charted by: Depth in Feet scaled 1:240

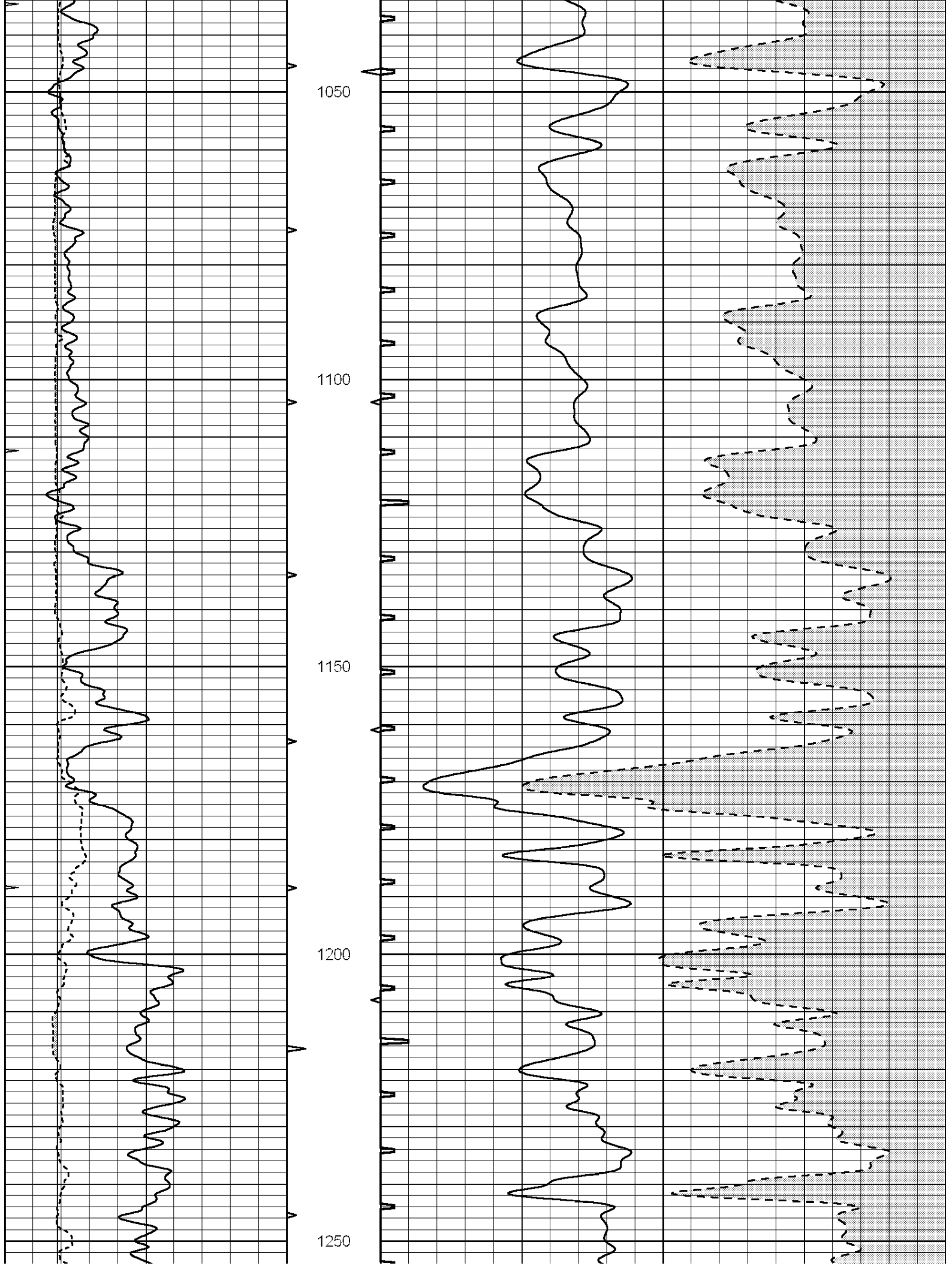
0	GAMMA RAY (GAPI)	150	ABHV	140	DELTA TIME (usec/ft)	40
6	CALIPER (in)	16	10 (ft3)	0	30	SONIC POROSITY (pu)
0	MINMK	20	TBHV	0	ITT (msec)	20
			0 (ft3)	10		

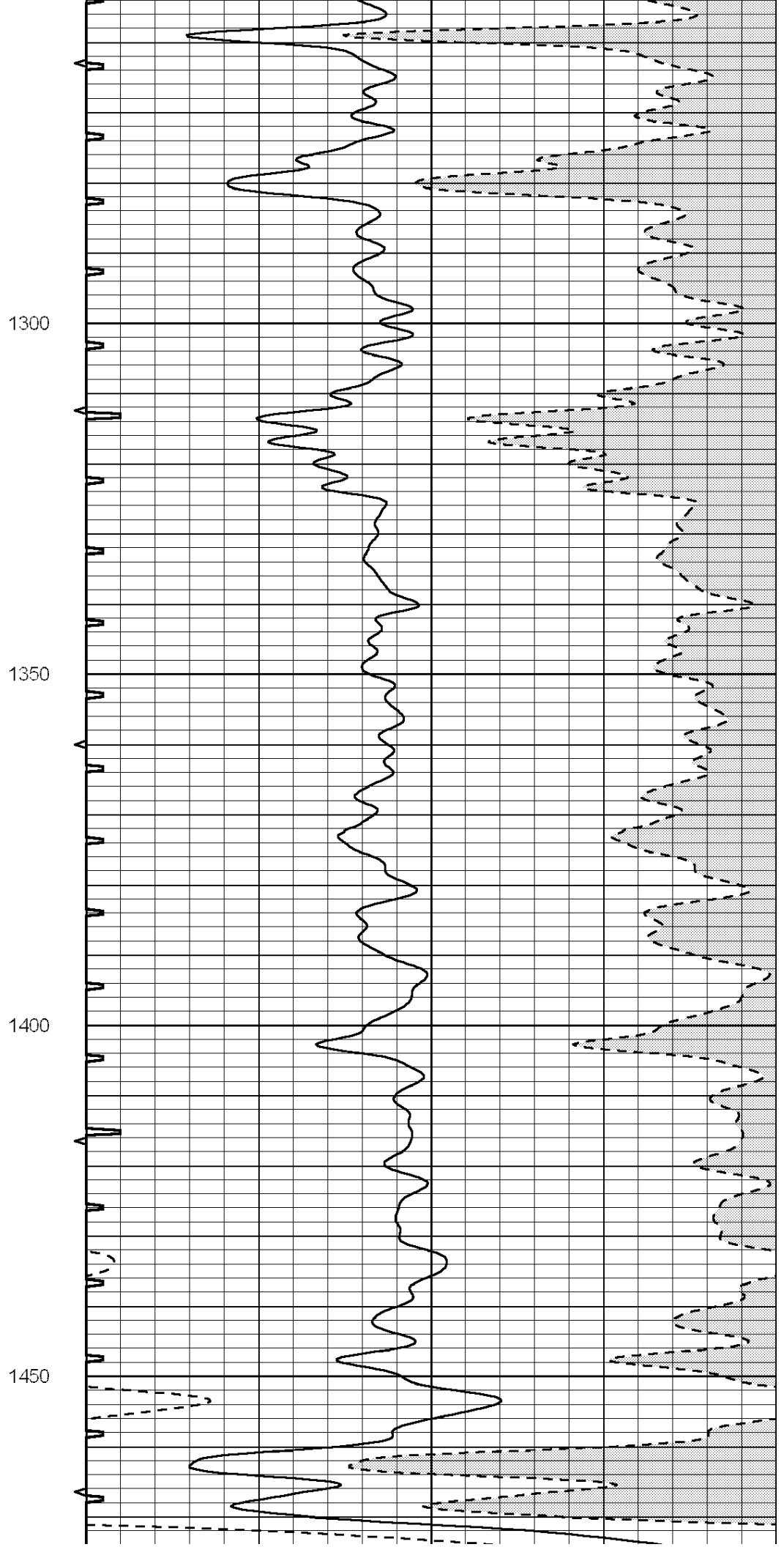
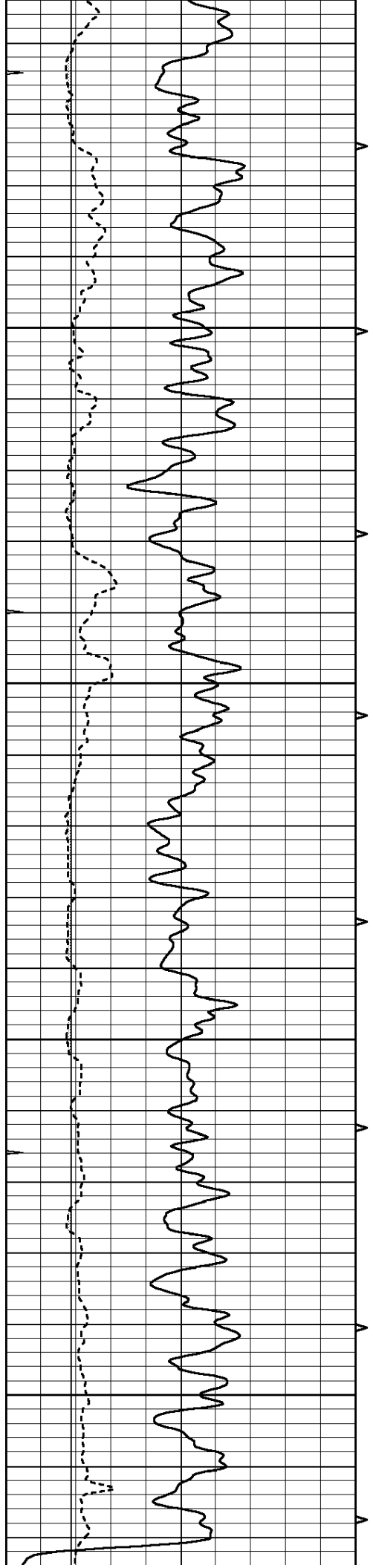


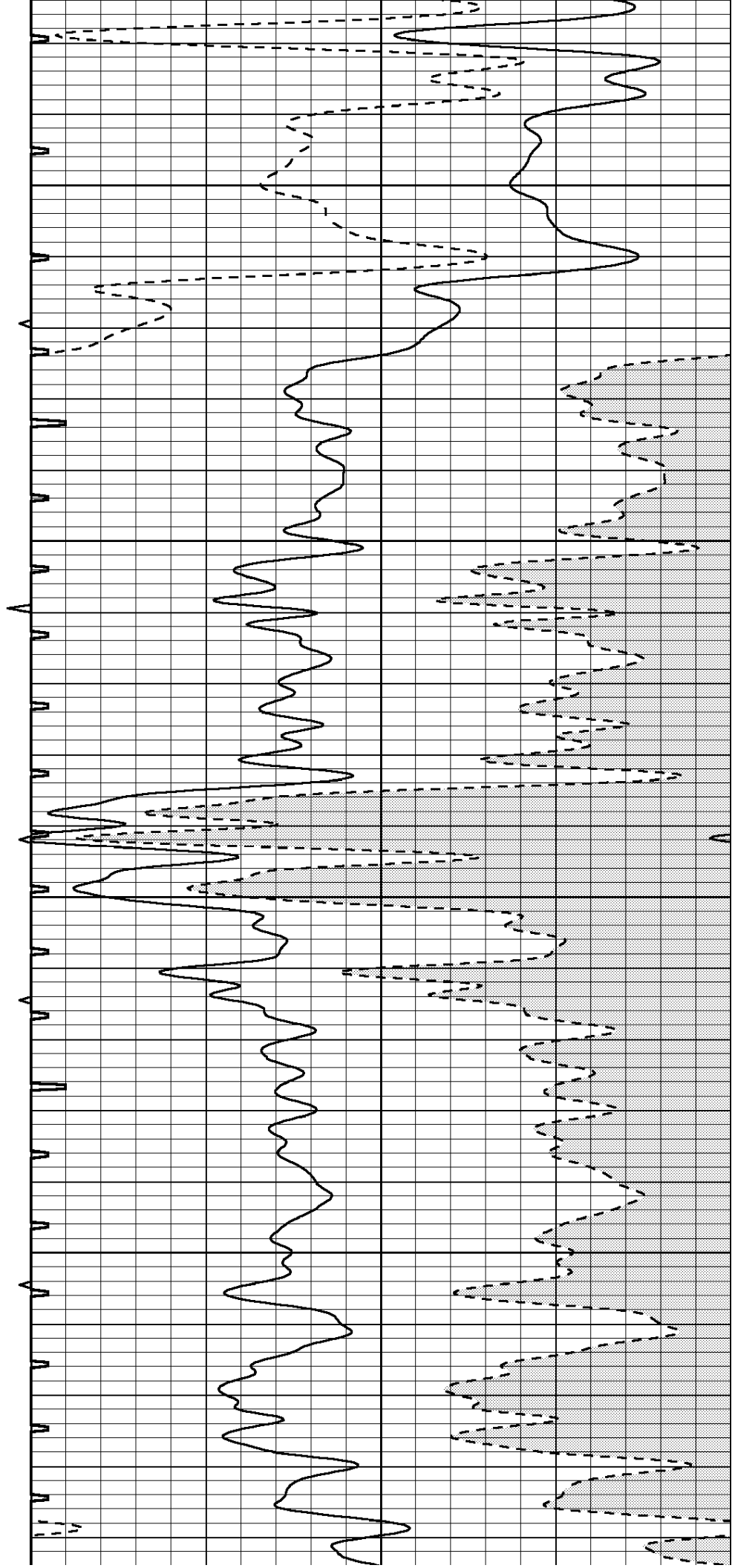
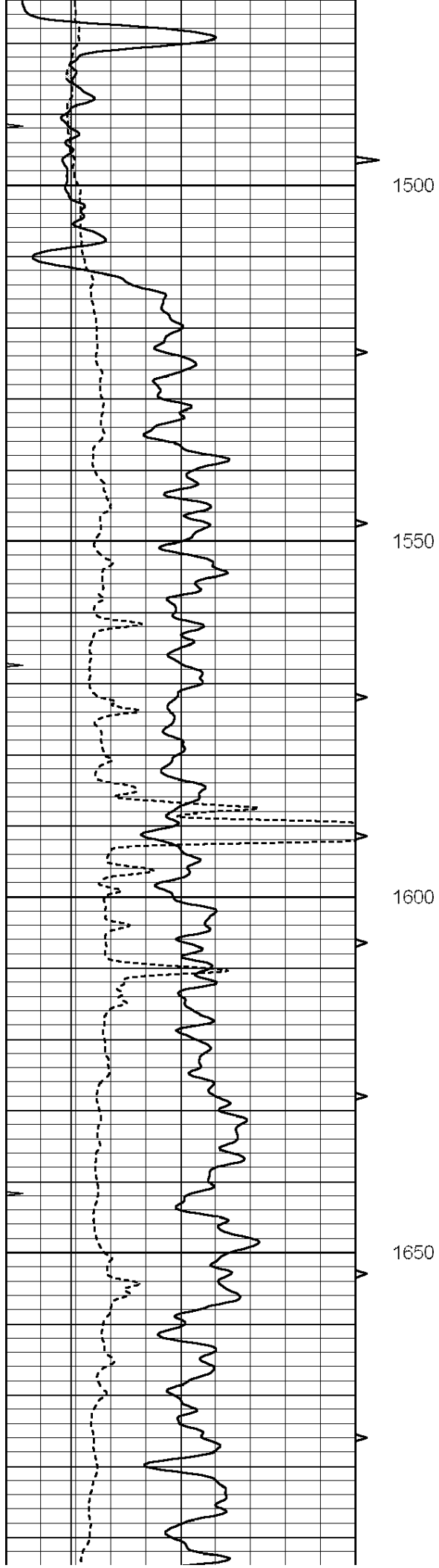


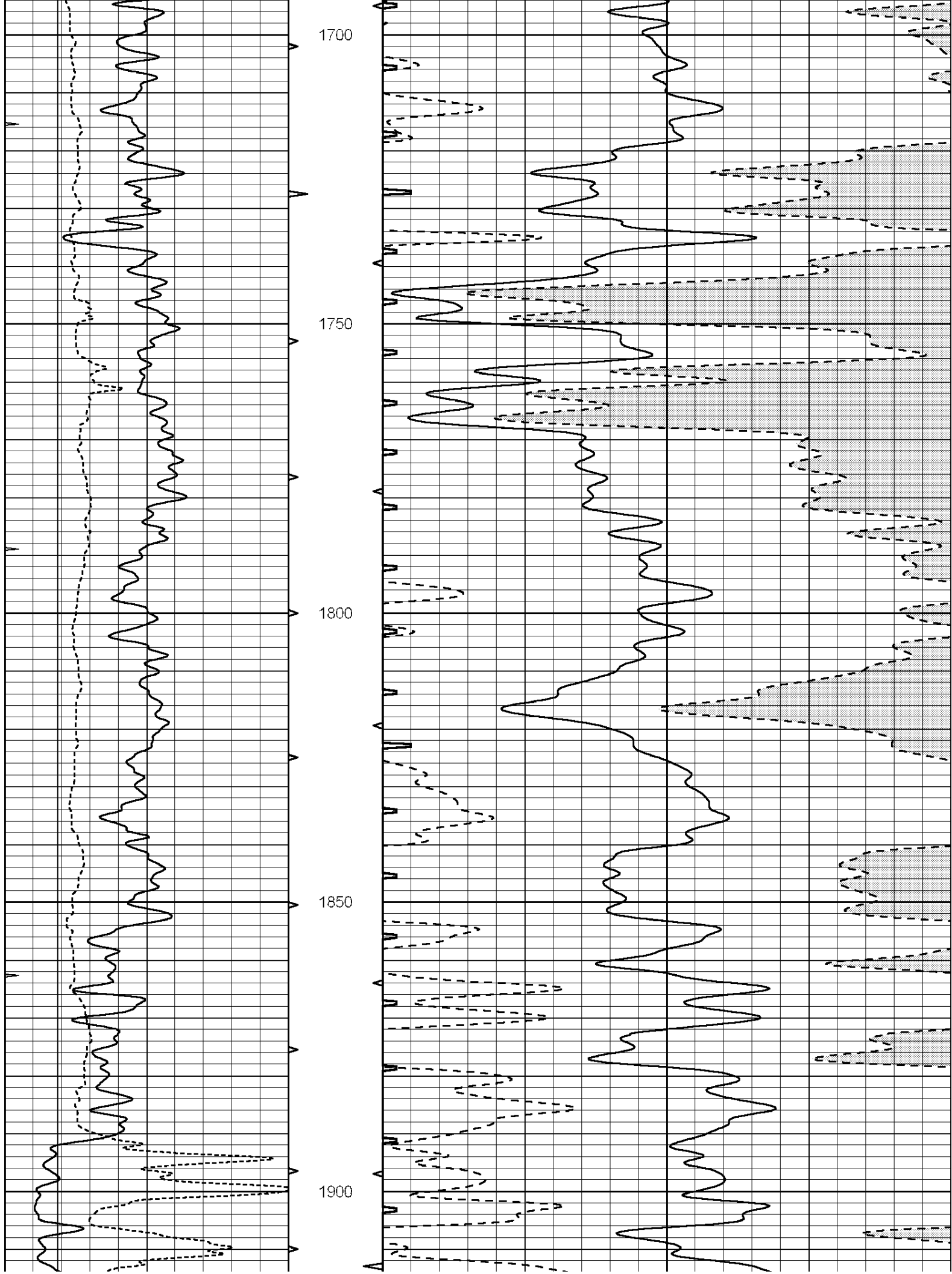


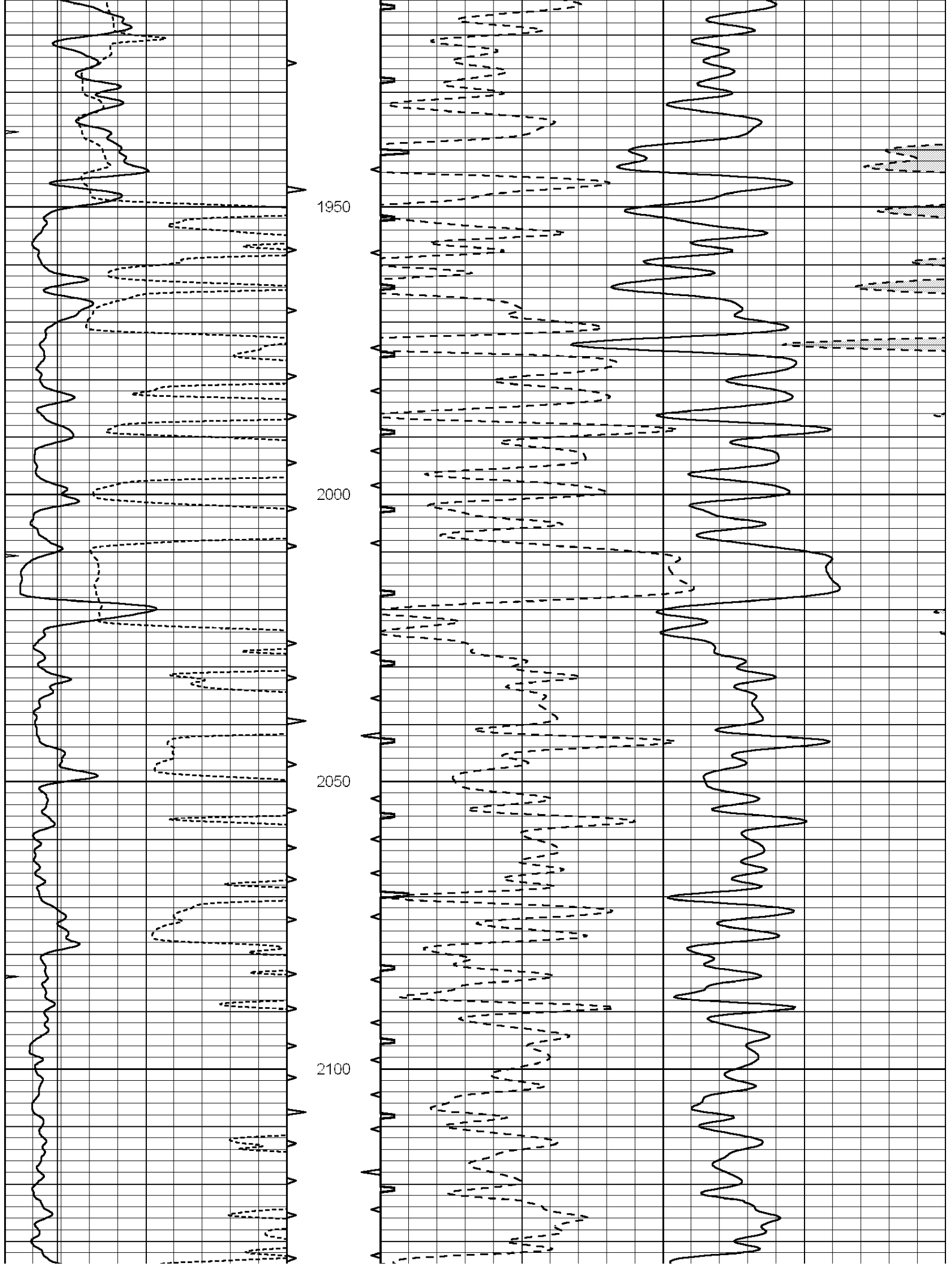


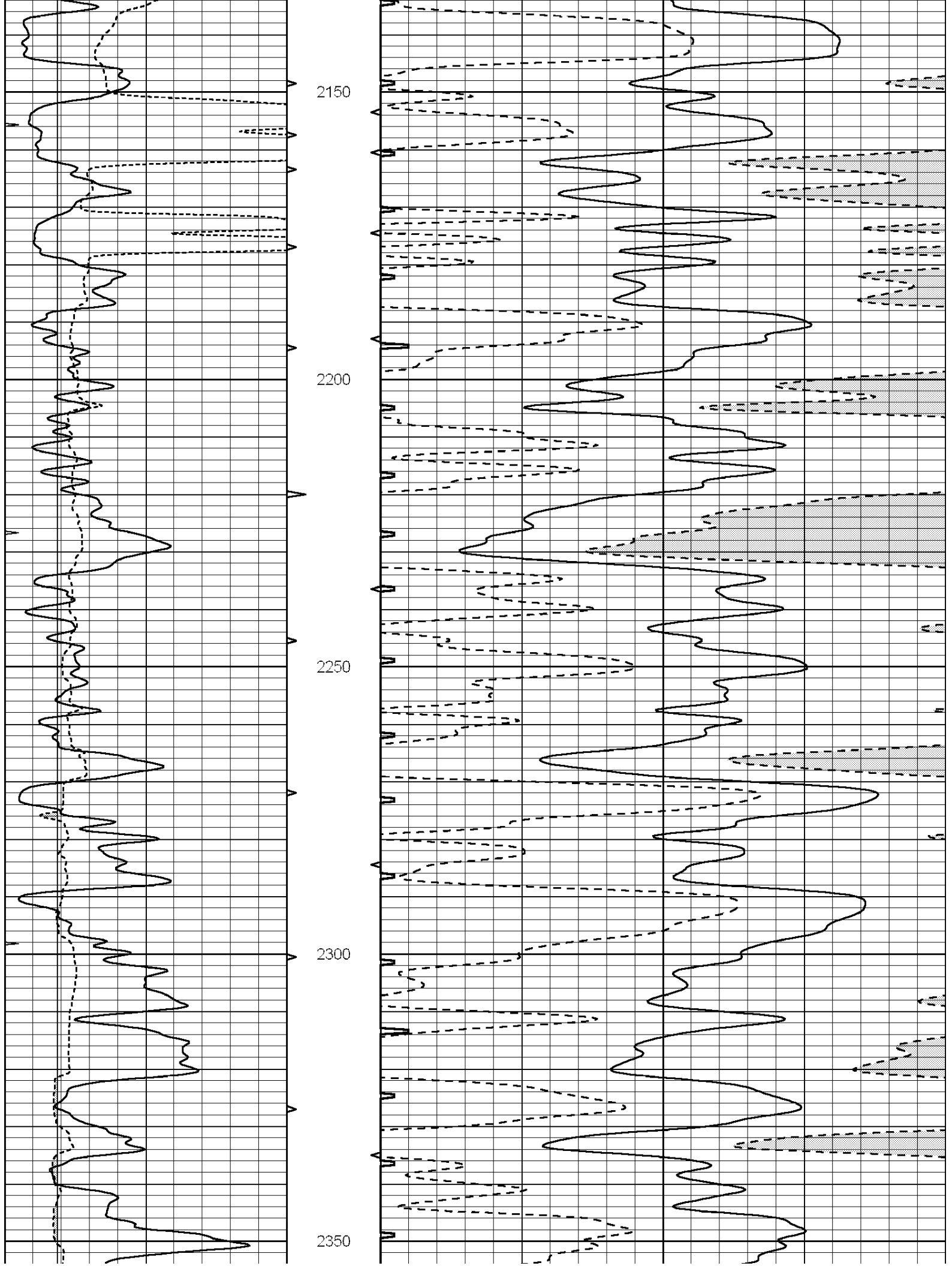


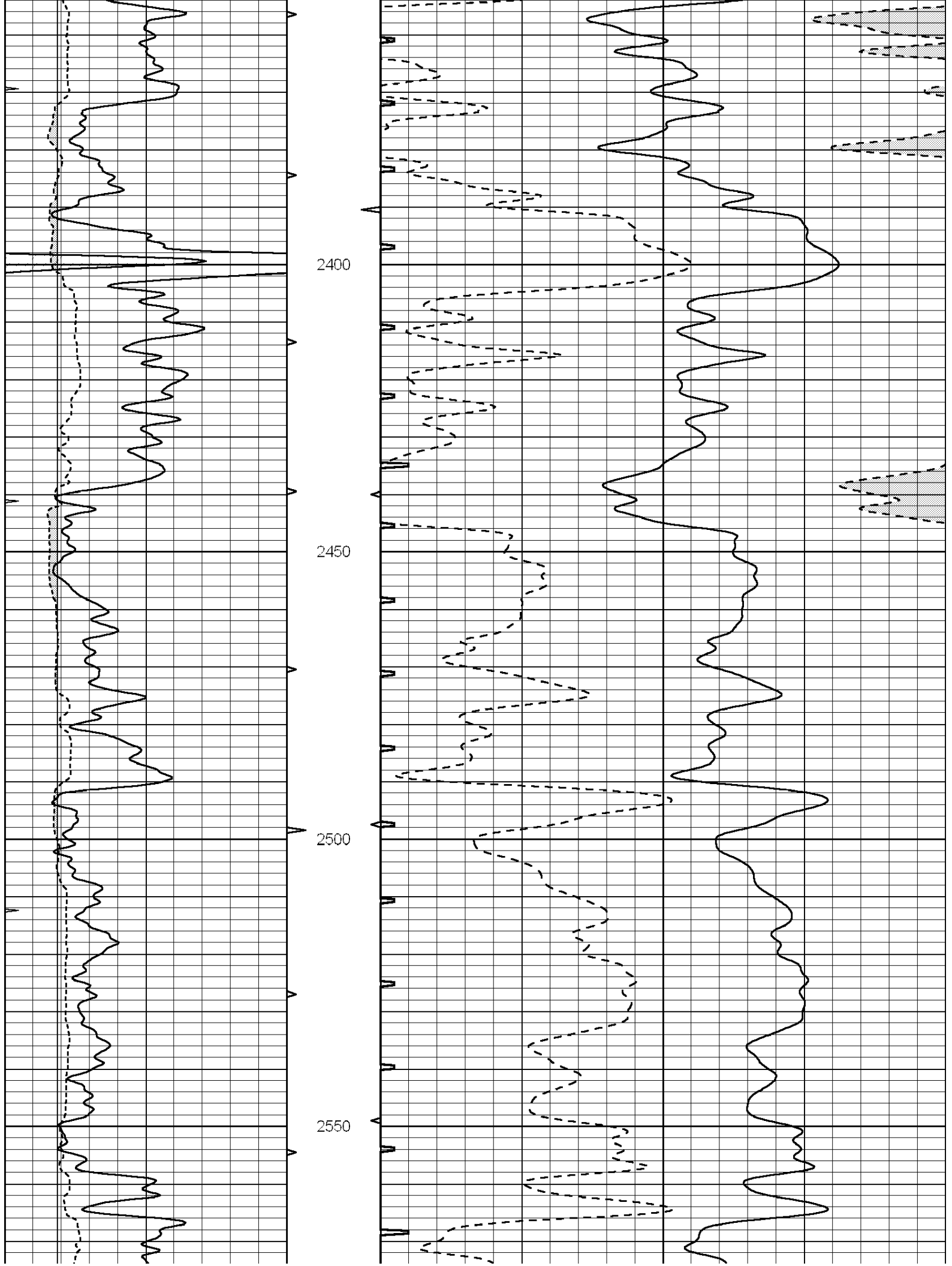


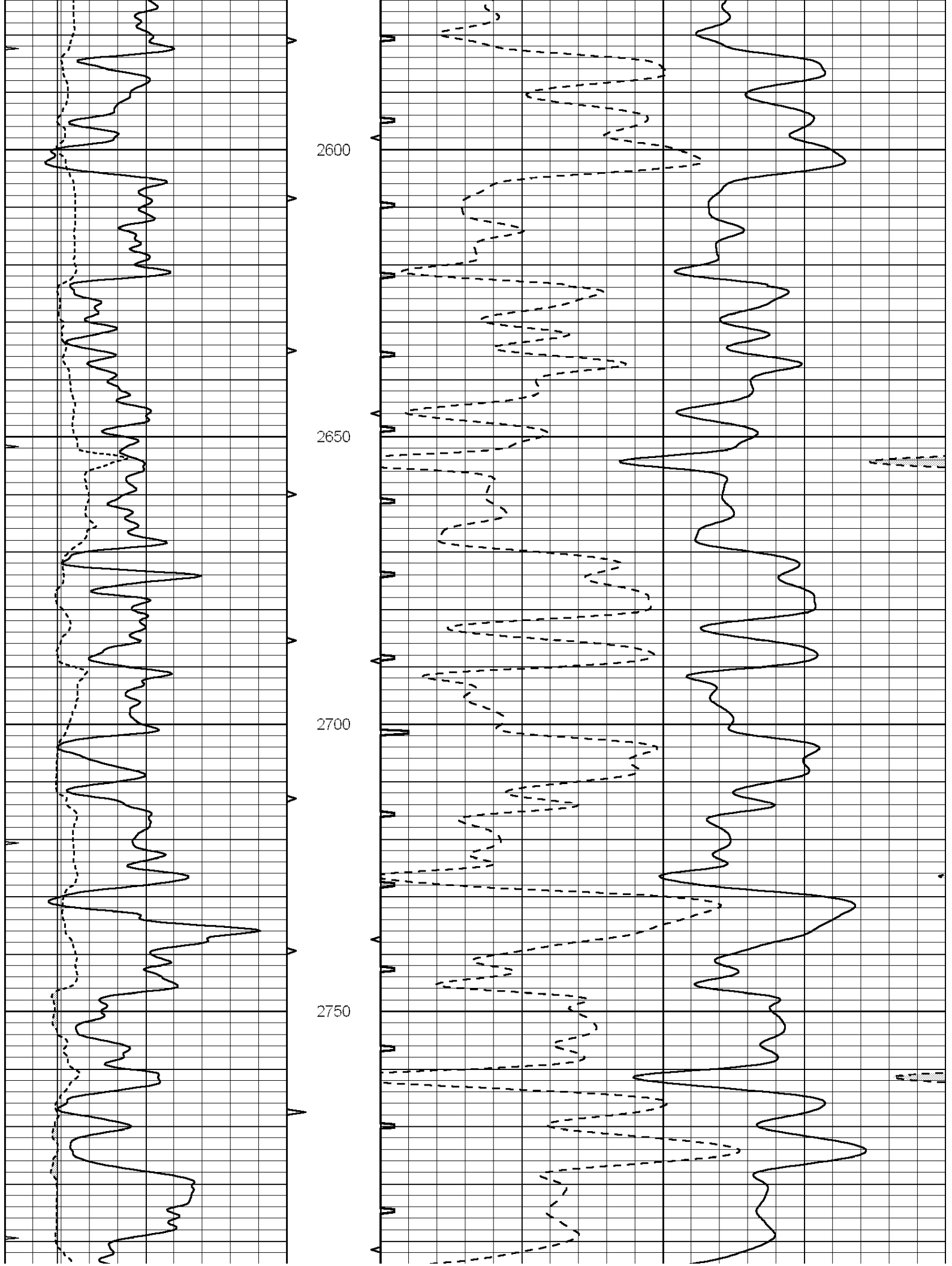


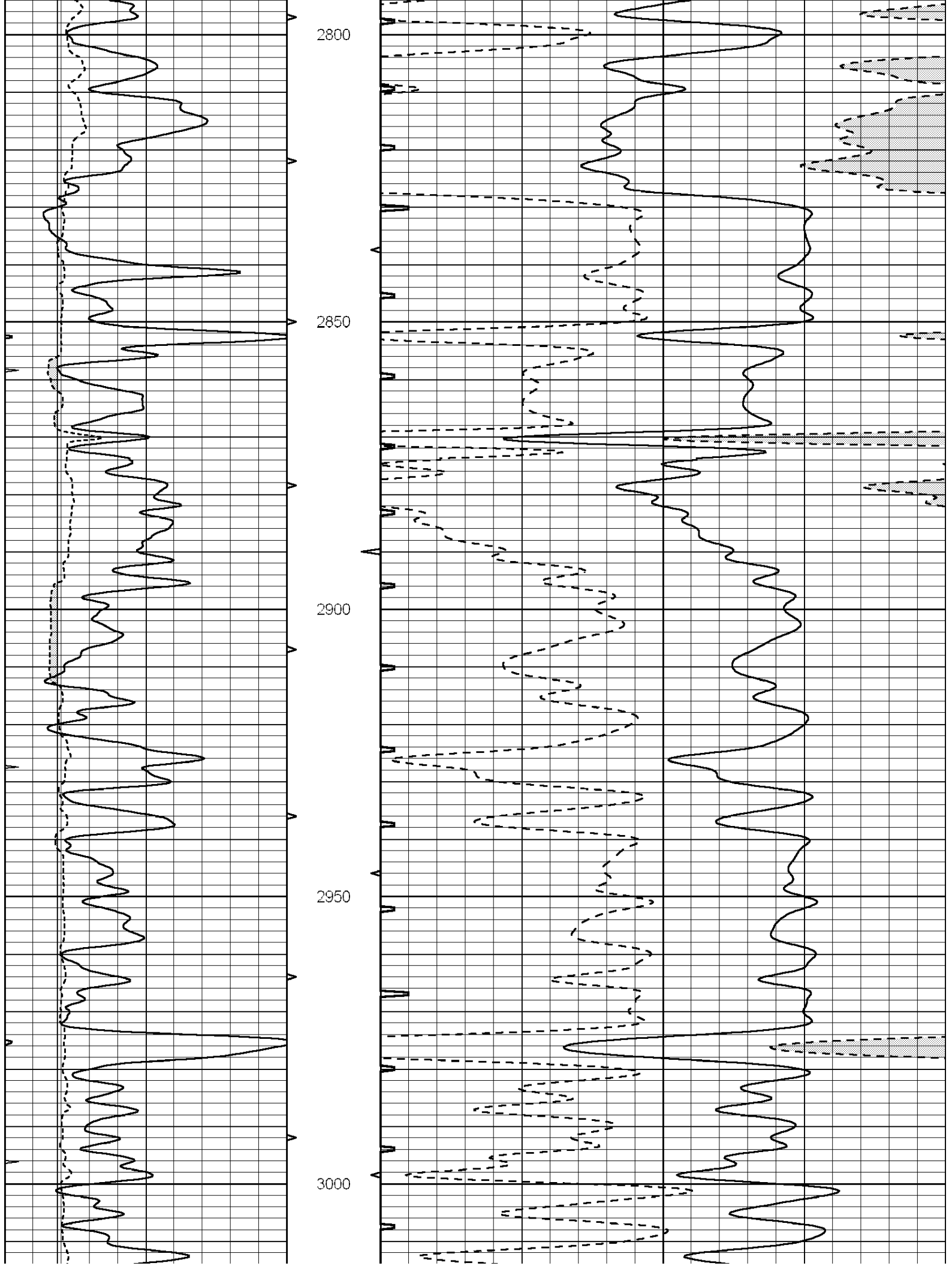


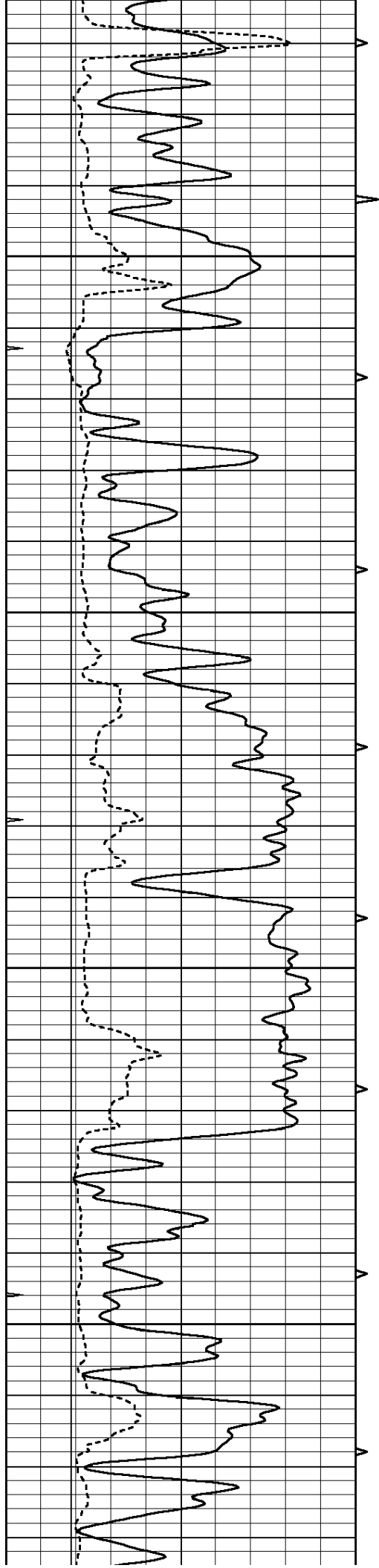










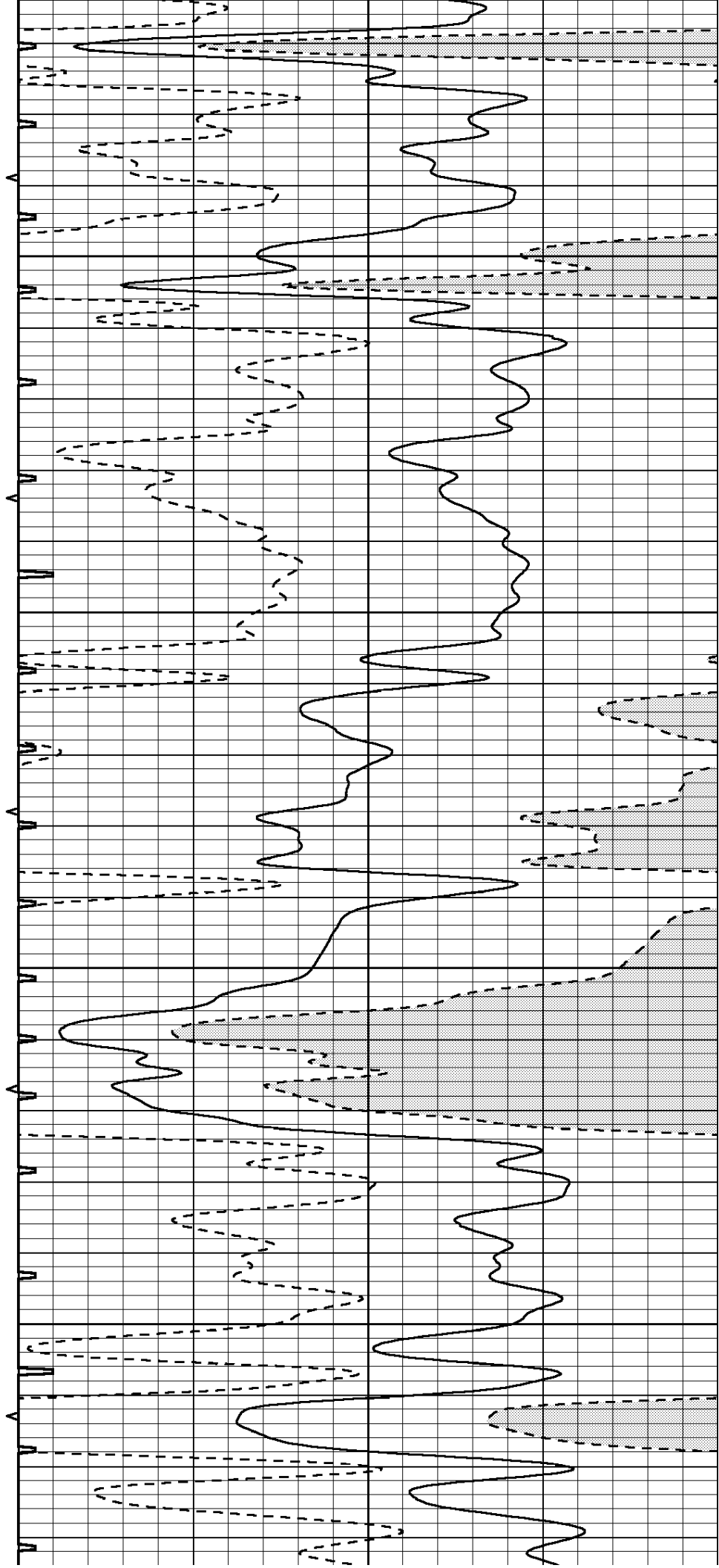


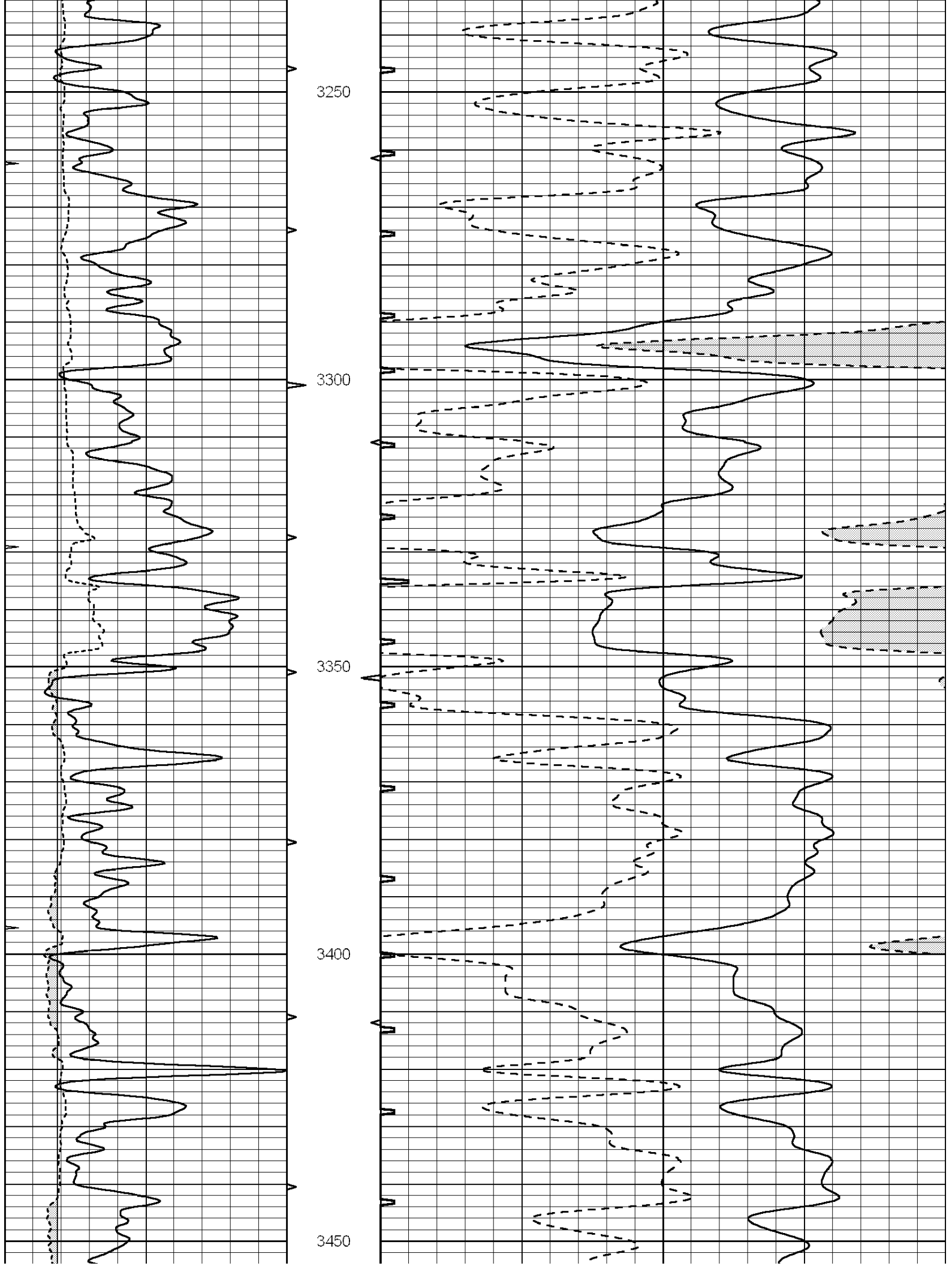
3050

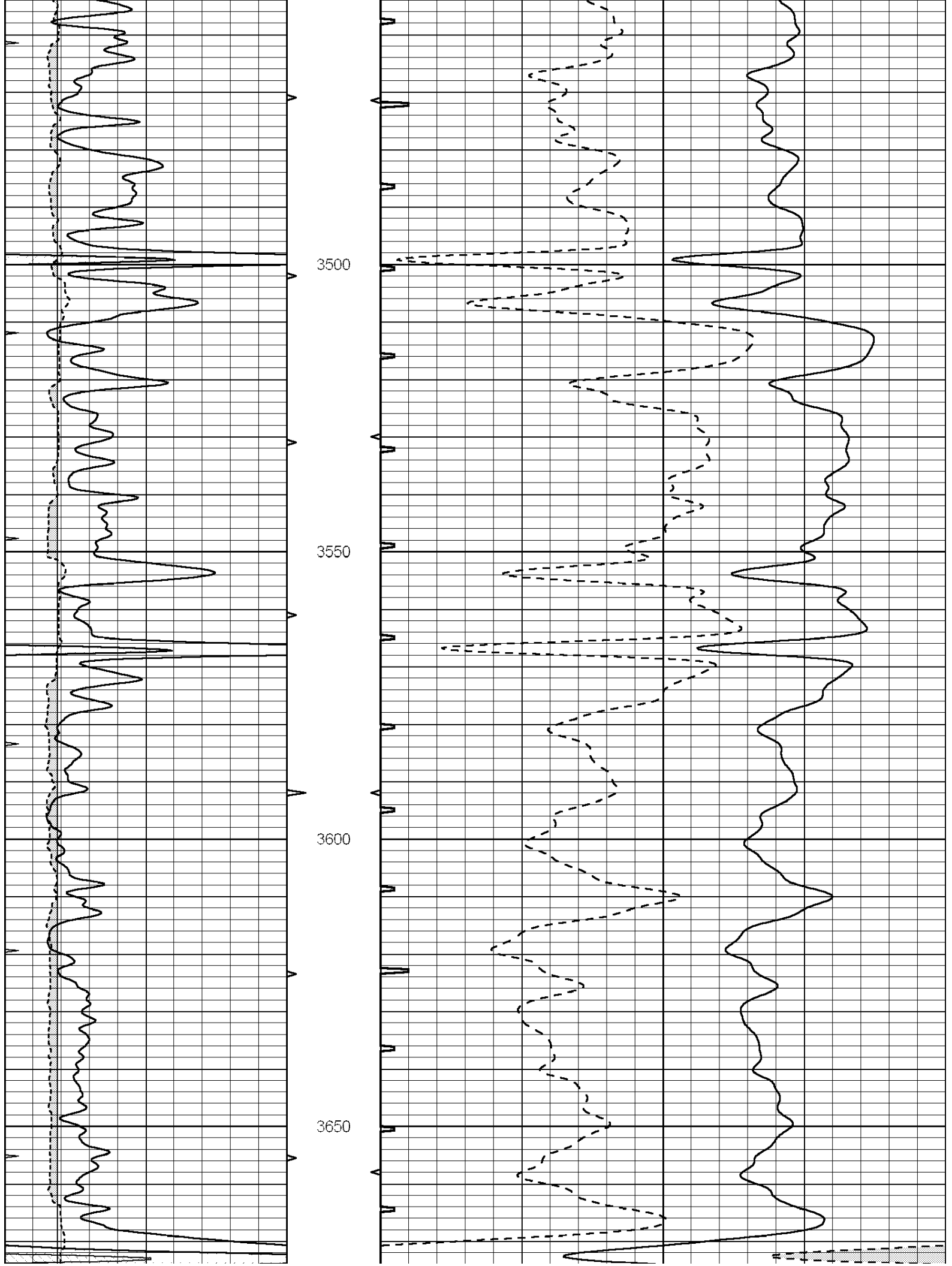
3100

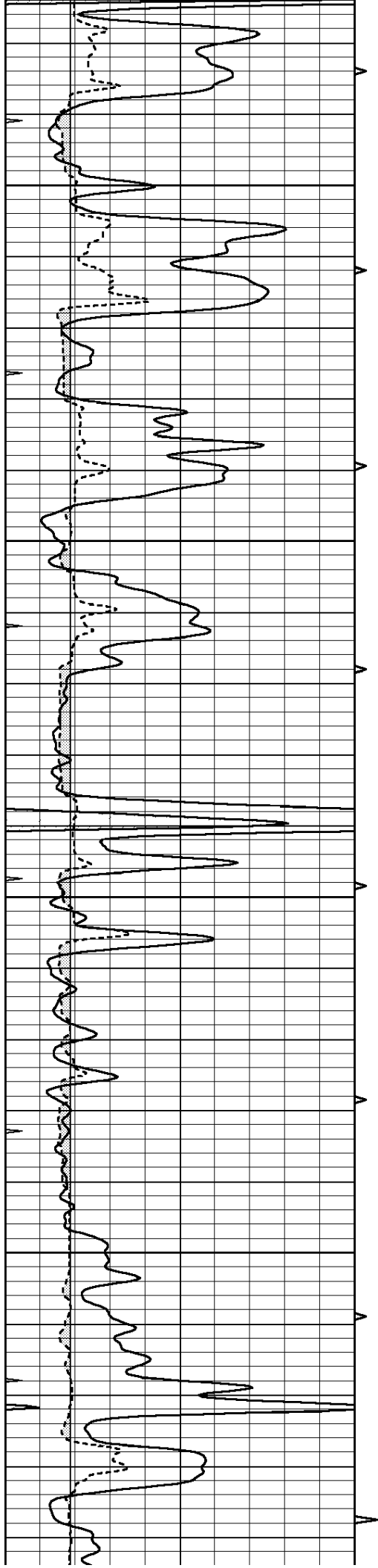
3150

3200







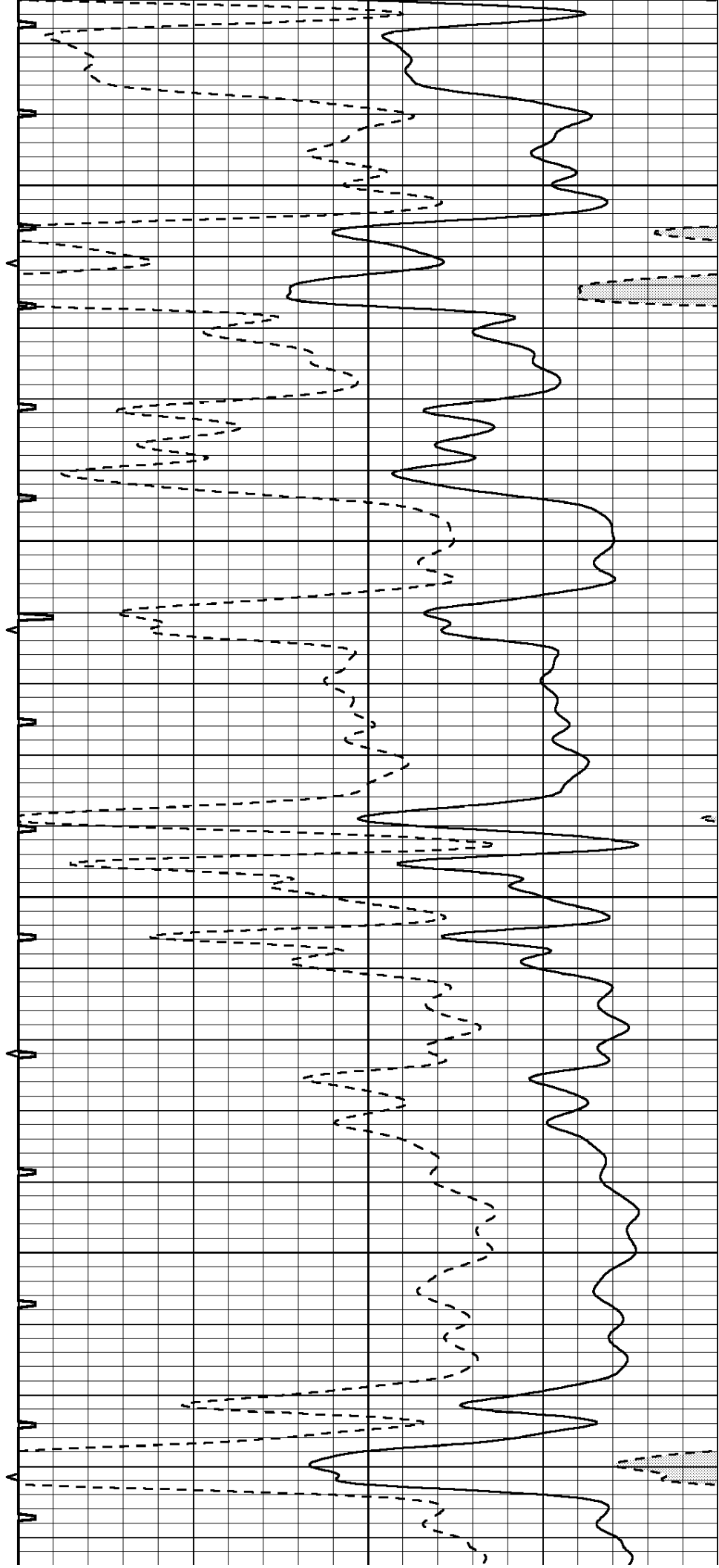


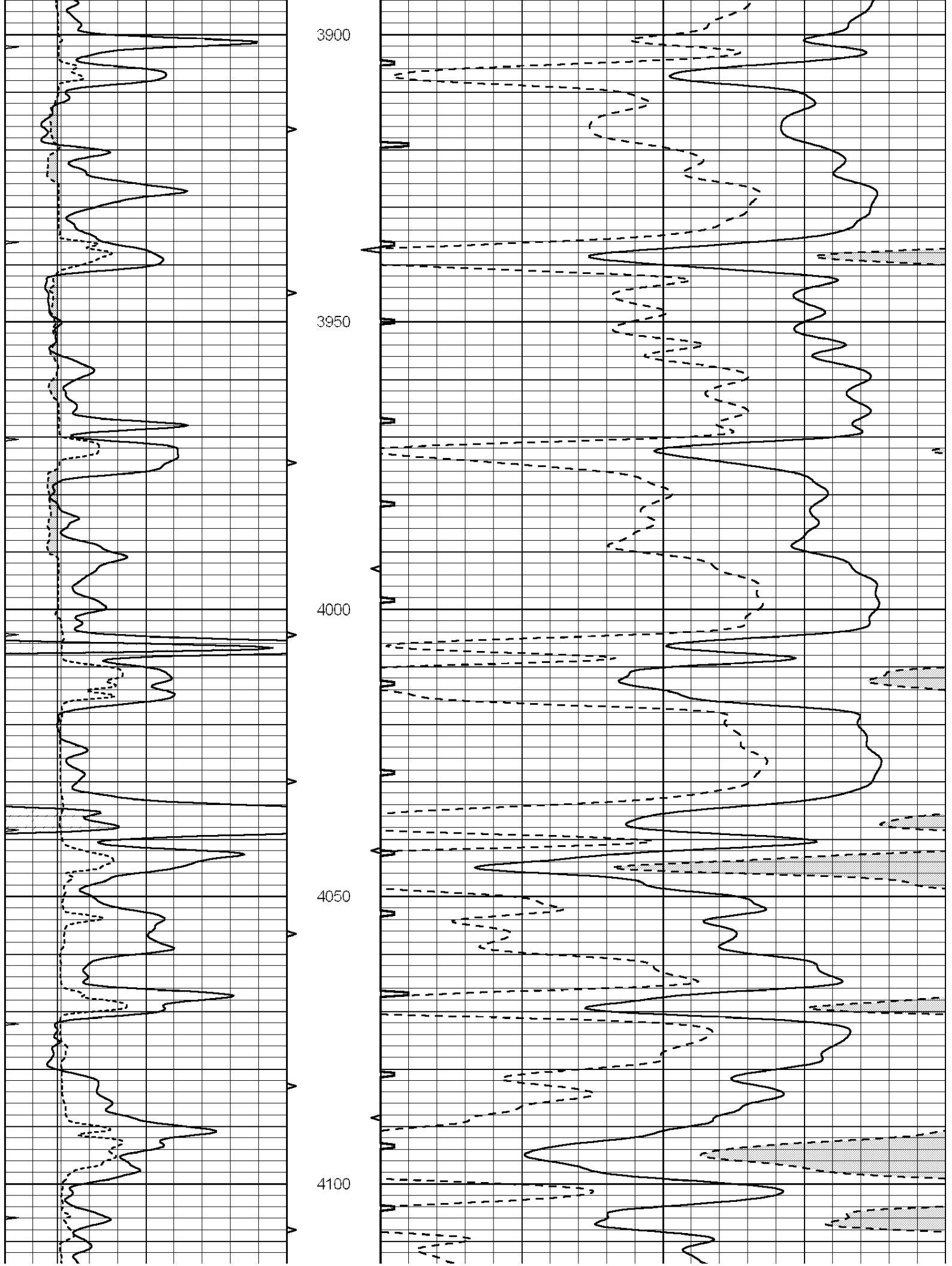
3700

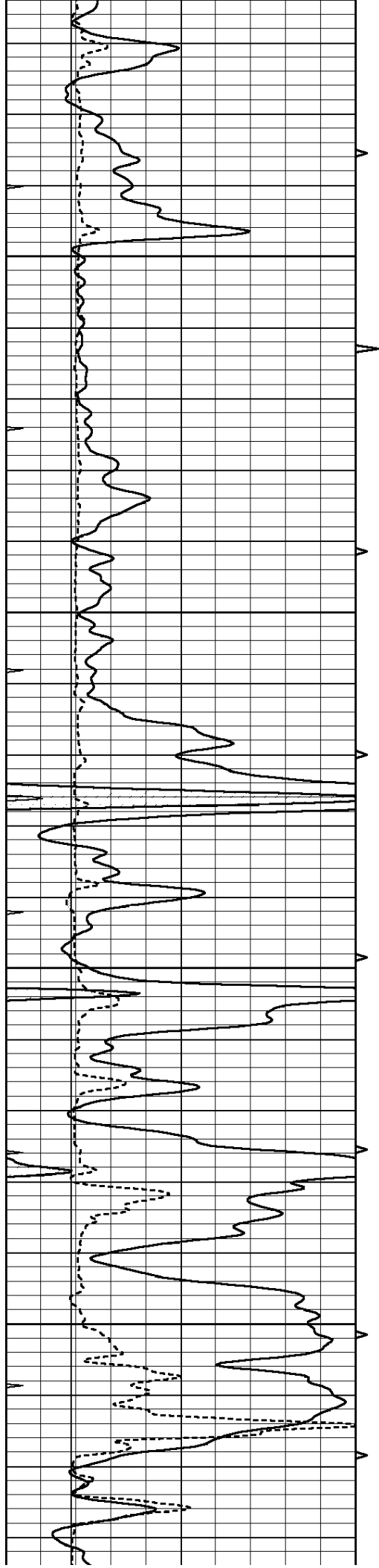
3750

3800

3850





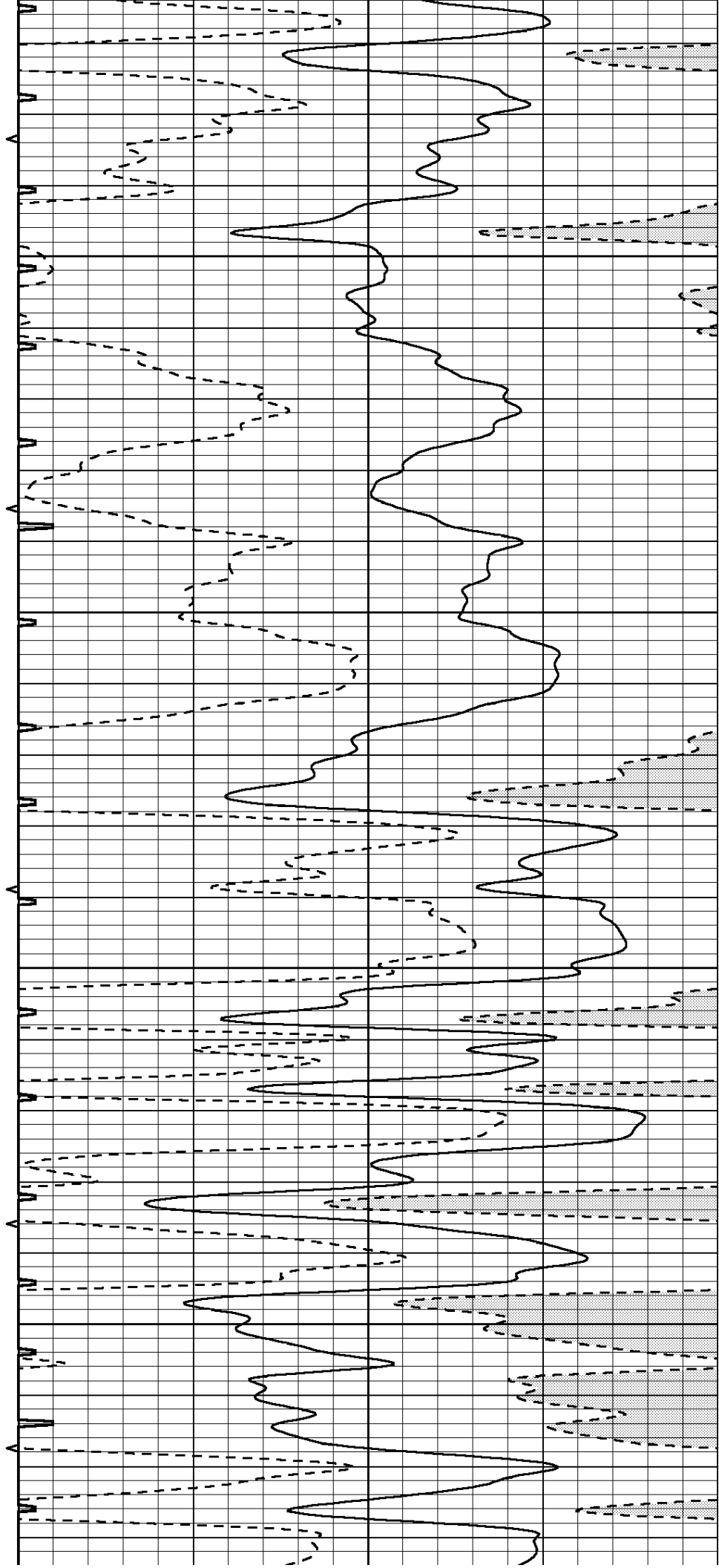


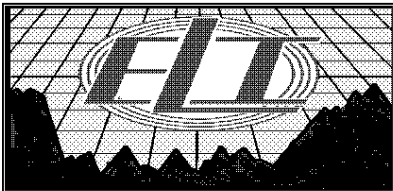
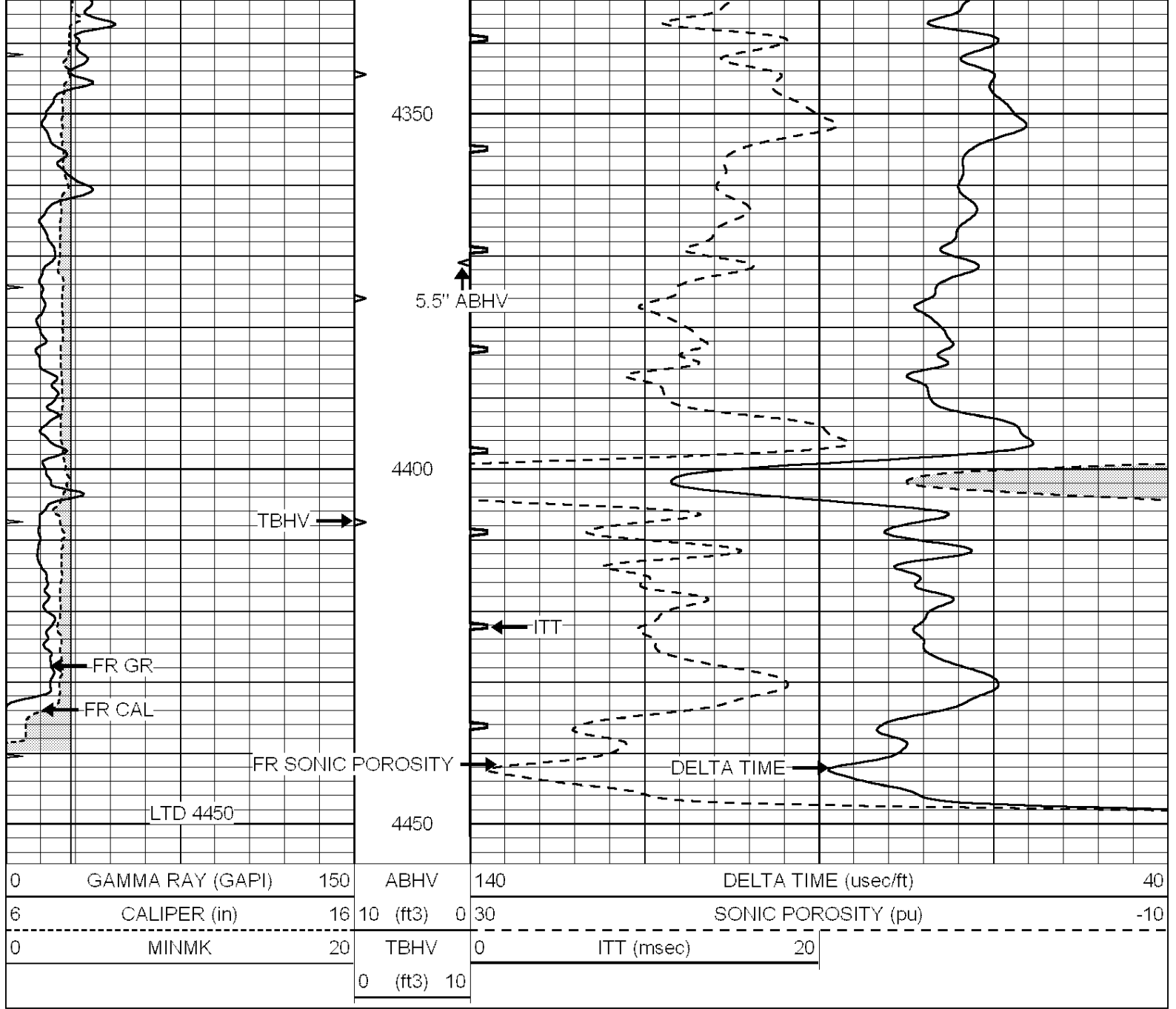
4150

4200

4250

4300

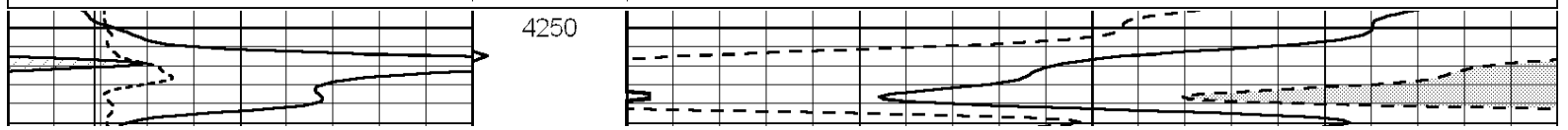


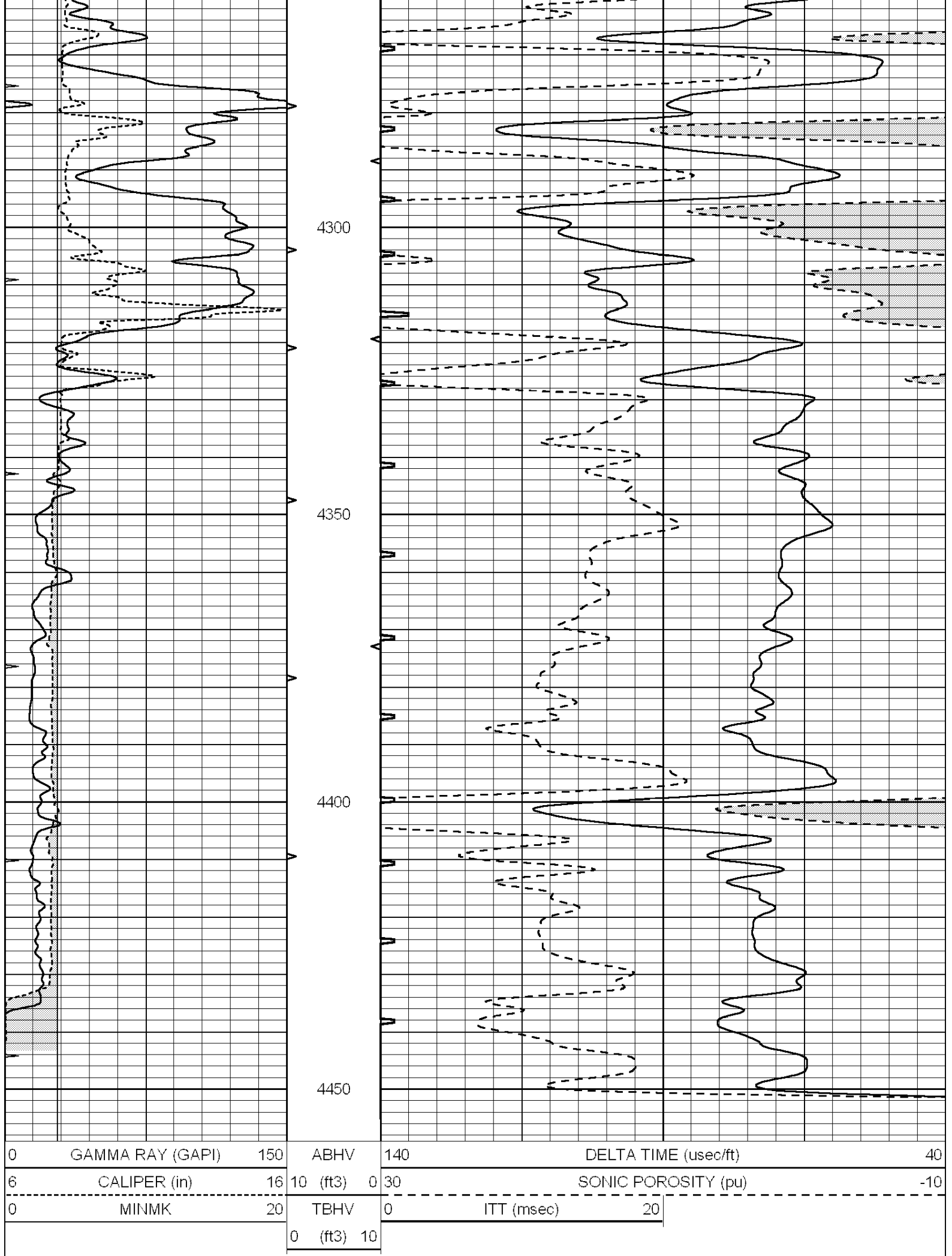


REPEAT SECTION

Database File: 1831pe.db
 Dataset Pathname: pass5.1
 Presentation Format: slt
 Dataset Creation: Sat Sep 30 21:52:35 2017 by Calc SOC 120430
 Charted by: Depth in Feet scaled 1:240

0	GAMMA RAY (GAPI)	150	ABHV	140	DELTA TIME (usec/ft)	40
6	CALIPER (in)	16	10 (ft3)	0 30	SONIC POROSITY (pu)	-10
0	MINMK	20	TBHV	0	ITT (msec)	20
			0 (ft3)	10		





0	GAMMA RAY (GAPI)	150	ABHV	140	DELTA TIME (usec/ft)	40
6	CALIPER (in)	16	10 (ft3)	0 30	SONIC POROSITY (pu)	-10
0	MINMK	20	TBHV	0	ITT (msec)	20
			0 (ft3)	10		