



**MICRO
LOG**

Company L.D. DRILLING, INC.
Well #1-13 KNOTTS
Field PFAFF EAST
County NESS
State KANSAS

Company L.D. DRILLING, INC.
Well #1-13 KNOTTS
Field PFAFF EAST
County NESS
State KANSAS

Location: AP1 #: 15-135-25975-0000
690' FSL & 1867' FEL
SW - NE - SW - SE
Permanent Datum GROUND LEVEL Elevation 2190
Log Measured From KELLY BUSHING 5' A.G.L.
Drilling Measured From KELLY BUSHING
Elevation
K.B. 2195
D.F. 2193
G.L. 2190

Date	9/30/17		
Run Number	TWO		
Depth Driller	4450		
Depth Logger	4450		
Bottom Logged Interval	4434		
Top Log Interval	3500		
Casing Driller	8 5/8"@244'		
Casing Logger	244		
Bit Size	7 7/8"		
Type Fluid in Hole	CHEMICAL MUD	CHLORIDES 8,200 PPM	
Density / Viscosity	9.4/45		
pH / Fluid Loss	9.0/11.2		
Source of Sample	FLOWLINE		
Rim @ Meas. Temp	.500@80F		
Rmf @ Meas. Temp	.375@80F		
Rmc @ Meas. Temp	.600@80F		
Source of Rmf / Rmc	MEASUREMENT		
Rim @ BHT	.333@120F		
Time Circulation Stopped	4.5 HOURS		
Time Logger on Bottom	10:15 P.M.		
Maximum Recorded Temperature	120F		
Equipment Number	922339		
Location	HAYS, KANSAS		
Recorded By	JEFF LUEBBERS		
Witnessed By	KIM SHOEMAKER		

<<< Fold Here >>>

All interpretations are opinions based on inferences from electrical or other measurements and we cannot and do not guarantee the accuracy or correctness of any interpretation, and we shall not, except in the case of gross or willful negligence on our part, be liable or responsible for any loss, costs, damages, or expenses incurred or sustained by anyone resulting from any interpretation made by any of our officers, agents or employees. These interpretations are also subject to our general terms and conditions set out in our current Price Schedule.

Comments

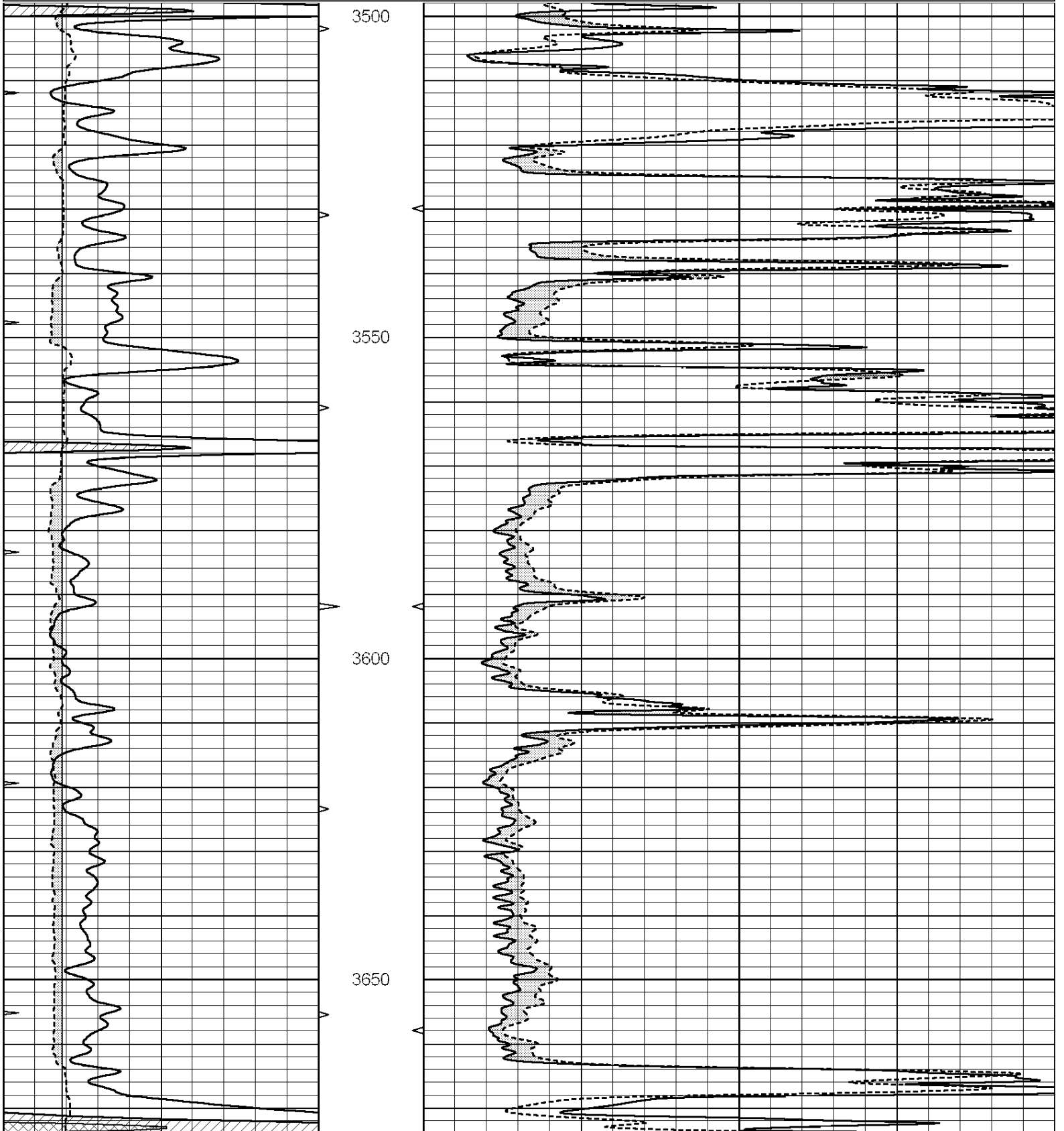
THANK YOU FOR USING ELI WIRELINE HAYS, KANSAS (785) 628-6395
DIRECTIONS
NESS CITY, KS., 3E. ON HWY 96 TO "RD. W", 4S., 1/2E., N. INTO

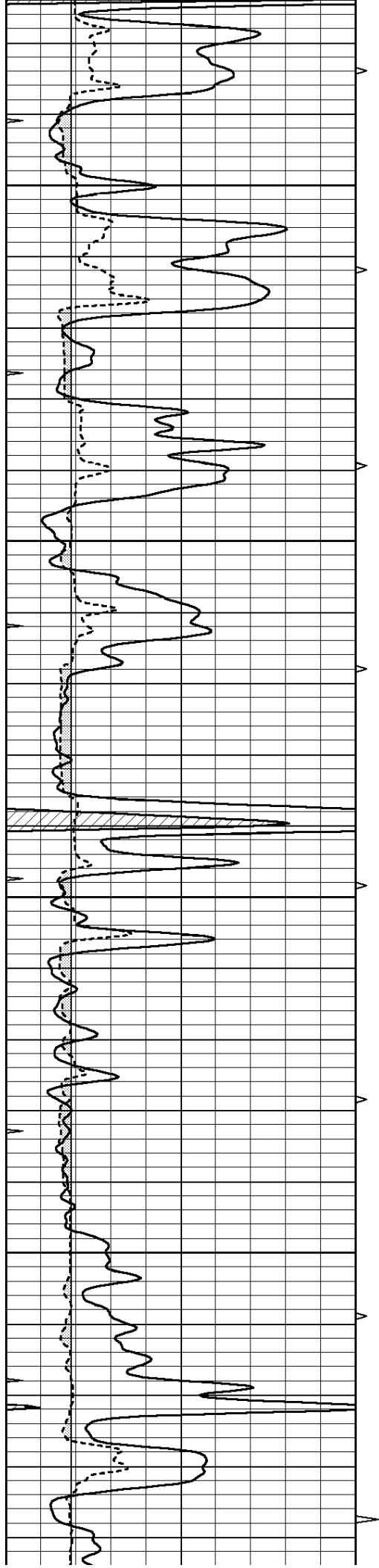


MAIN SECTION

Database File: 1831pe.db
 Dataset Pathname: pass6.2
 Presentation Format: micro
 Dataset Creation: Sat Sep 30 22:26:52 2017 by Calc SOC 120430
 Charted by: Depth in Feet scaled 1:240

0	GAMMA RAY (GAPI)	150	ABHV	0	MEL1.5 (Ohm-m)	40
6	CALIPER (in)	16	10 (ft3)	0 0	MEL 20 (Ohm-m)	40
0	MINMK	20	TBHV			
			0 (ft3)	10		



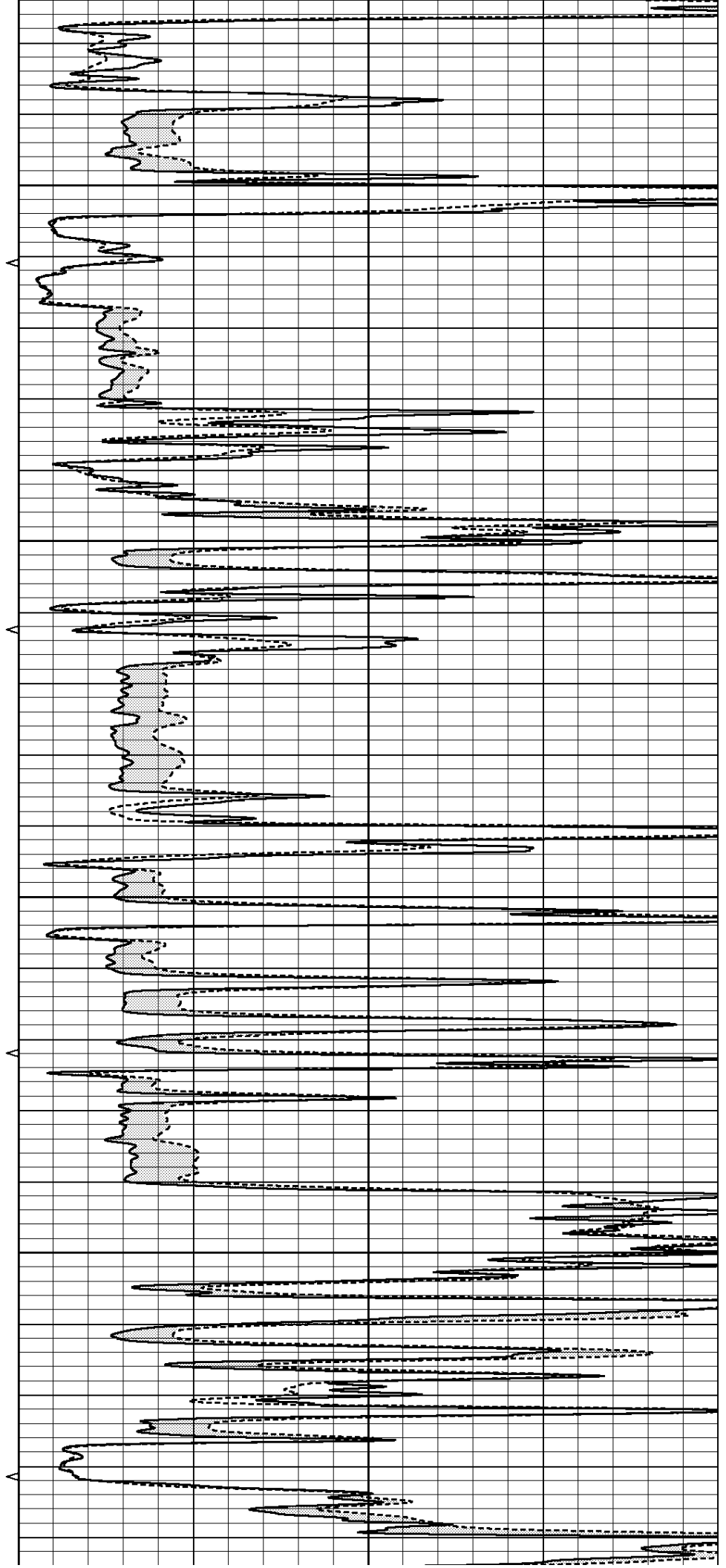


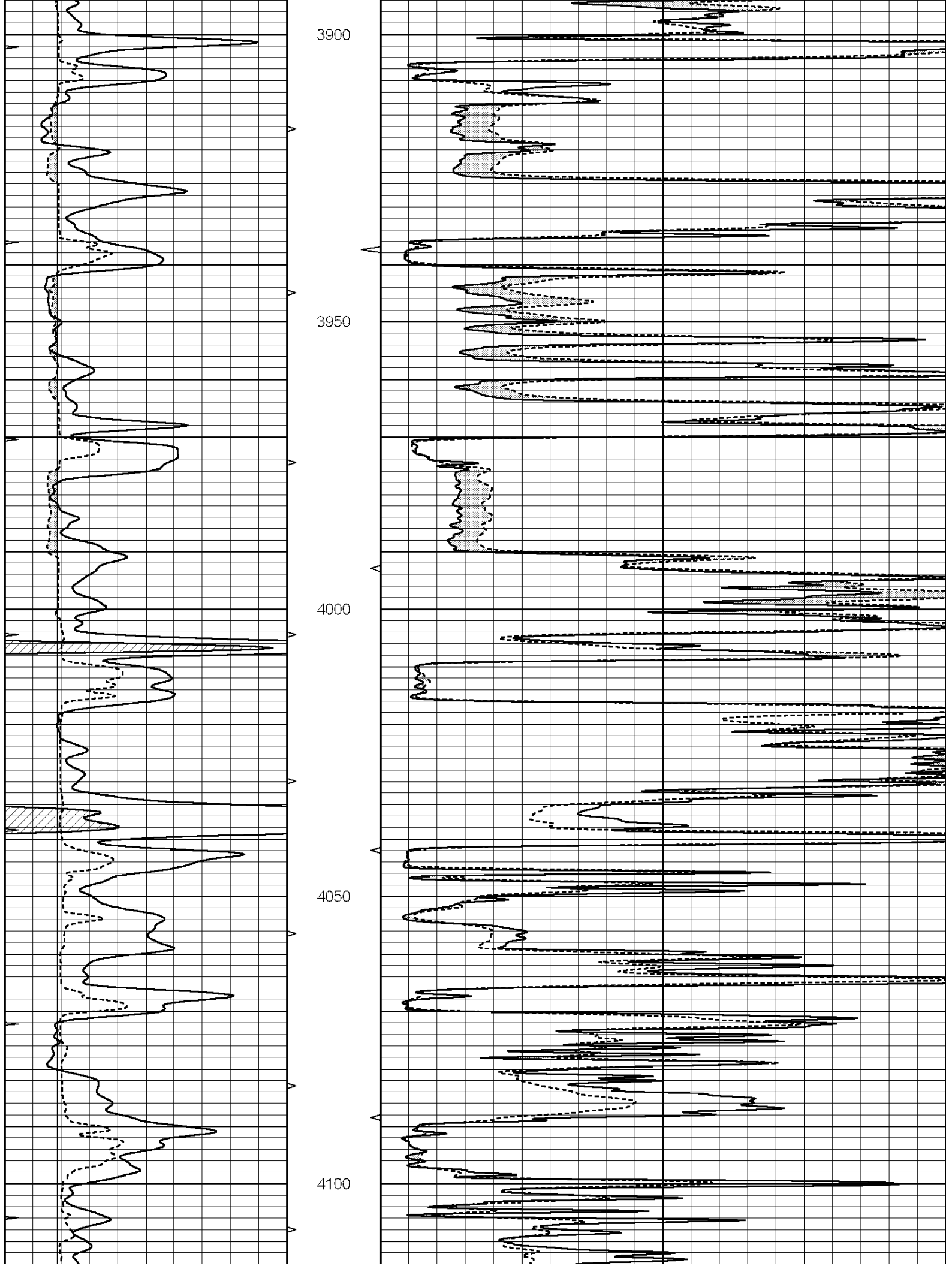
3700

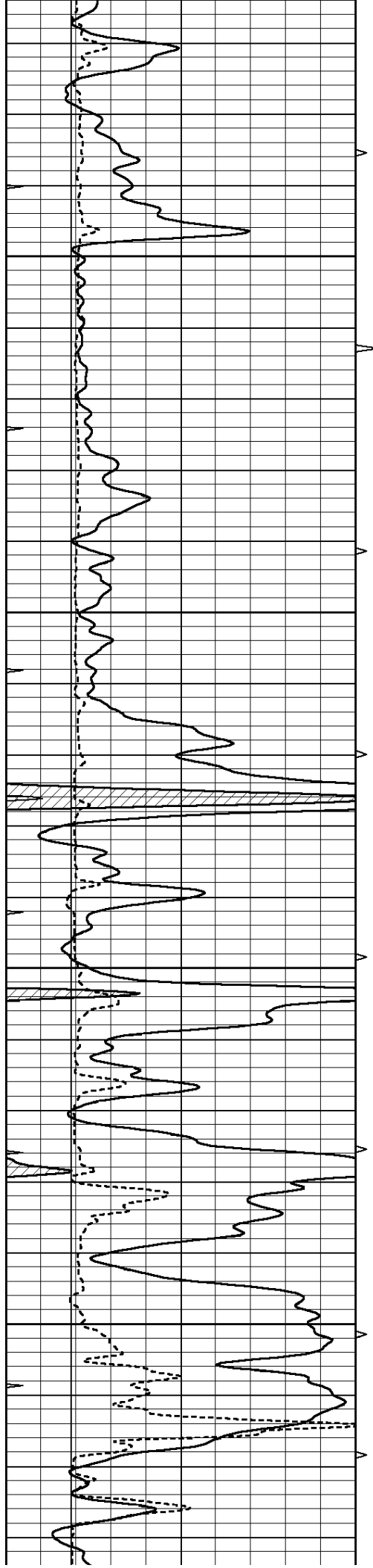
3750

3800

3850





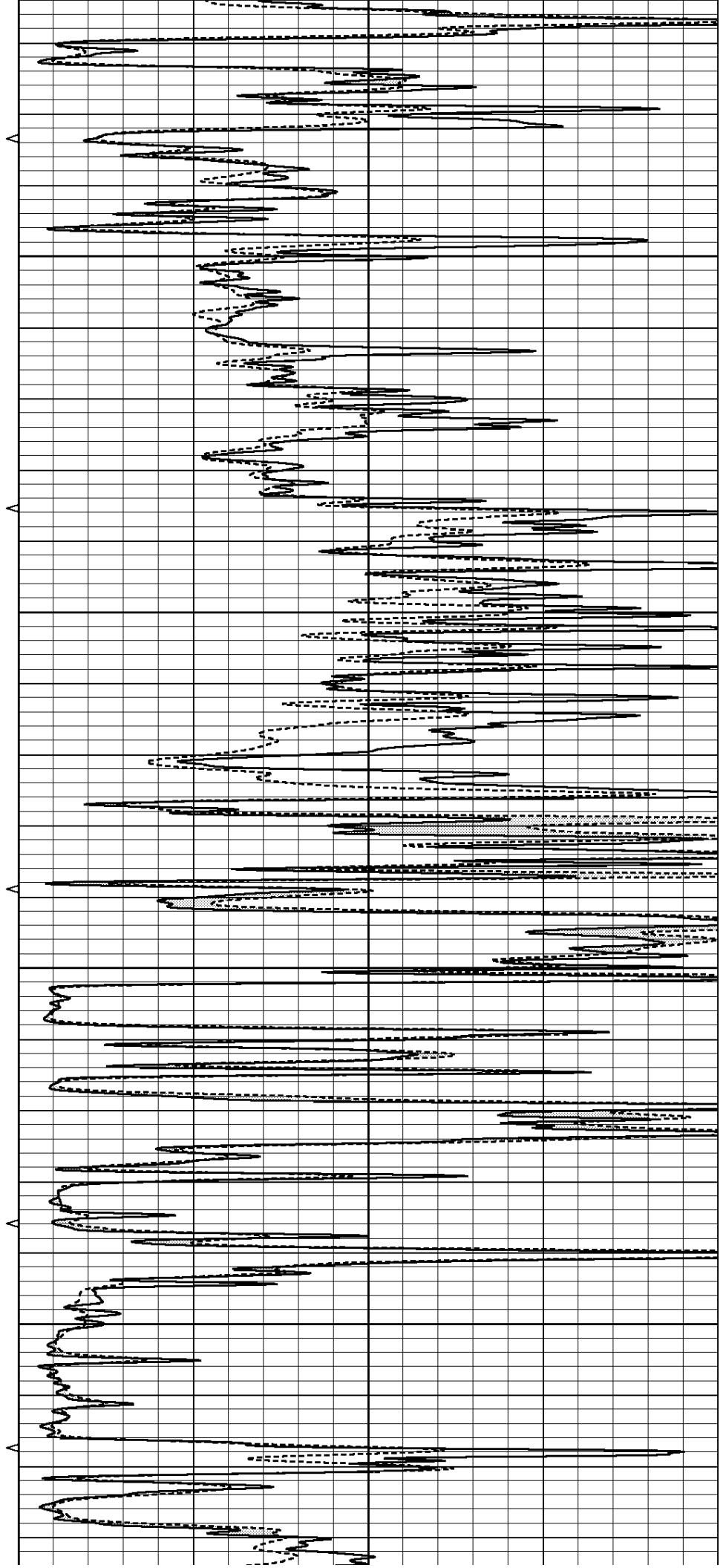


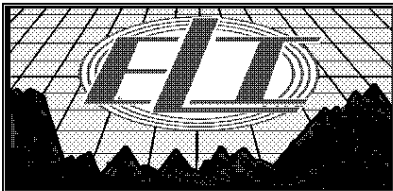
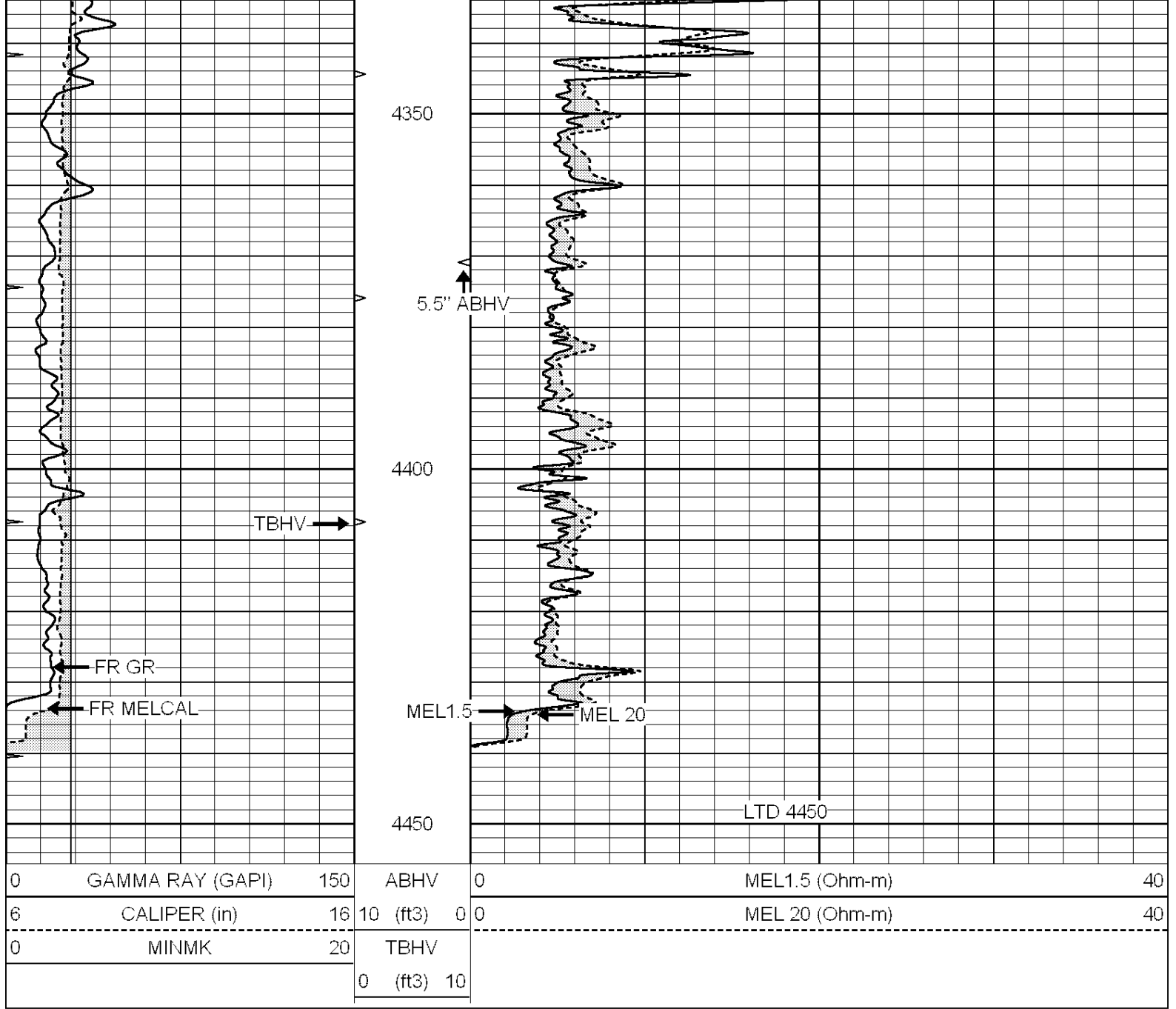
4150

4200

4250

4300

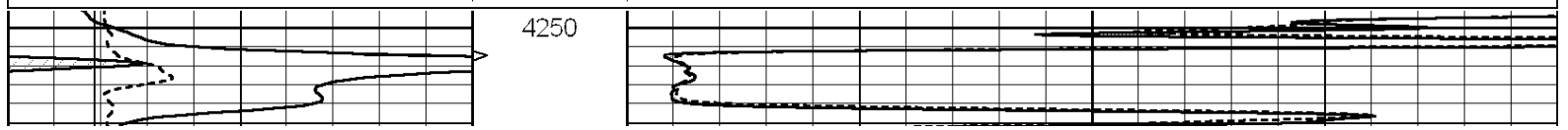


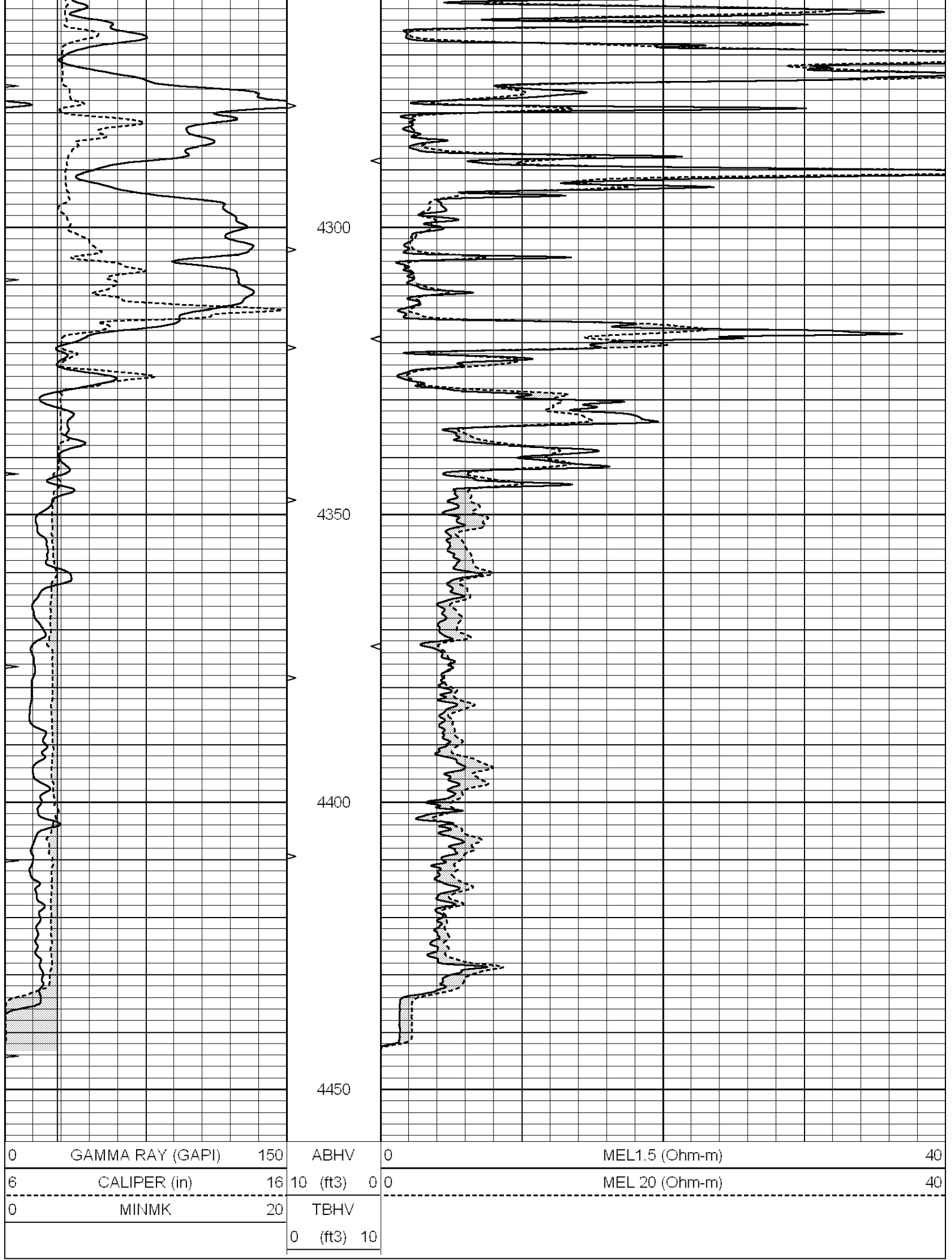


REPEAT SECTION

Database File: 1831pe.db
 Dataset Pathname: pass5.1
 Presentation Format: micro
 Dataset Creation: Sat Sep 30 21:52:35 2017 by Calc SOC 120430
 Charted by: Depth in Feet scaled 1:240

0	GAMMA RAY (GAPI)	150	ABHV	0	MEL1.5 (Ohm-m)	40
6	CALIPER (in)	16	10 (ft3)	0 0	MEL 20 (Ohm-m)	40
0	MINMK	20	TBHV			
			0 (ft3)	10		





0	GAMMA RAY (GAPI)	150	ABHV	0	MEL1.5 (Ohm-m)	40
6	CALIPER (in)	16	10 (ft3)	0	MEL 20 (Ohm-m)	40
0	MINMK	20	TBHV			
			0 (ft3)	10		

Calibration Report

Database File: 1831pe.db
 Dataset Pathname: pass6.2
 Dataset Creation: Sat Sep 30 22:26:52 2017 by Calc SOC 120430

MICRO Calibration Report

Serial Number: 070911
 Tool Model: ProbeN
 Performed: Tue Aug 08 06:25:06 2017

Caliper Calibration:	Gain=3.961	Offset=2.157
	Low Cal	High Cal
References	7.900	18.000
Readings	1.450	4.000

1.5" Calibration:	Gain=40.000	Offset=0.000
	Low Cal	High Cal
References	0.000	20.000
Readings	0.001	1.240

2" Calibration:	Gain=48.000	Offset=0.000
	Low Cal	High Cal
References	0.000	20.000
Readings	0.001	1.076

Gamma Ray Calibration Report

Serial Number: 110959
 Tool Model: OPEN_GR
 Performed: Sat Sep 23 21:47:40 2017

Calibrator Value:	1.0	GAPI
Background Reading:	0.0	cps
Calibrator Reading:	1.0	cps
Sensitivity:	0.2400	GAPI/cps